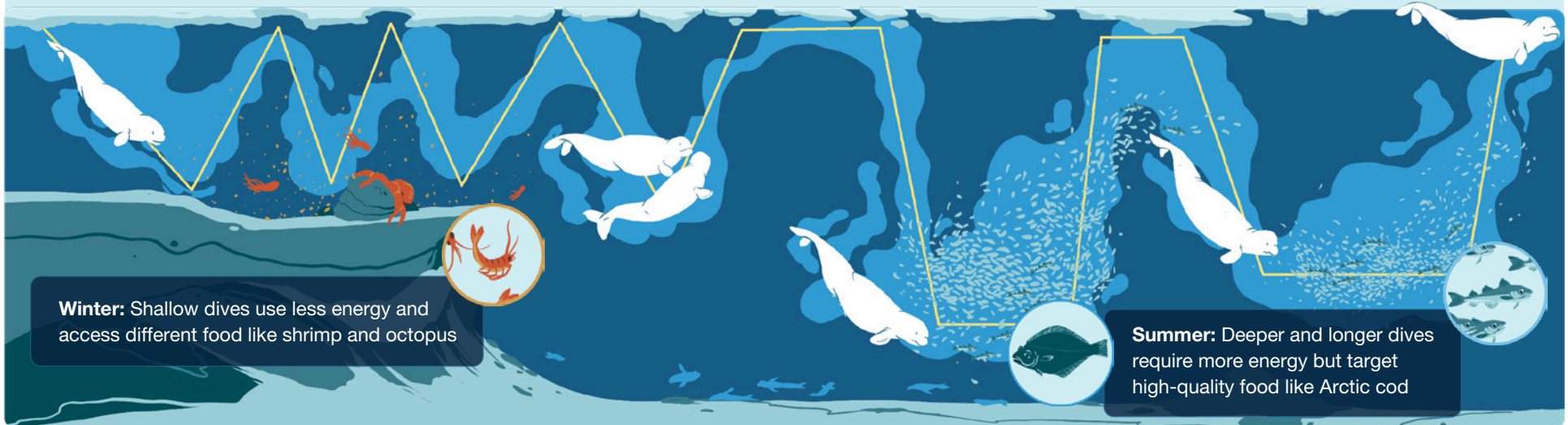


Diving in: learning about marine mammal habitat use

Beluga and bowhead whales change their movements in response to different habitat conditions. They use different dive patterns to search for different types of food. This flexibility means they can respond to changes in their habitats and the types of food that are available.

Beluga (Eastern Beaufort Sea population)

Belugas dive to feed, rest, move from place to place, and navigate through sea ice. They use many different patterns of dives depending on what they are doing.



Winter: Shallow dives use less energy and access different food like shrimp and octopus

Summer: Deeper and longer dives require more energy but target high-quality food like Arctic cod

Bowhead (Eastern Canada–West Greenland population)

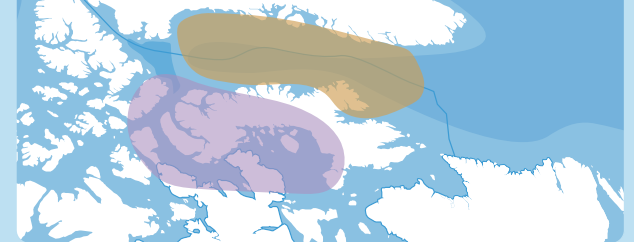
Bowhead whales dive mostly to feed. They use V-shaped dives to search for food. They use either deep, square dives or shallow, U-shaped dives to target their prey and eat.



Winter: Deeper dives to feed on copepods that migrated to deep water

Summer: Shallow dives to feed on different zooplankton near the ocean surface

Bowhead whales change their dives to adapt to different habitats and locations



Canadian Arctic Archipelago

- Move long distances
- Use shallower dives
- Make more dives in summer and fall
- Feed on a mixture of zooplankton

West Baffin Bay

- Stay near one area
- Use deeper dives
- Make the same number of dives in all seasons
- Feed mostly on fat-rich copepods