



STOCK STATUS UPDATE OF ARCTIC SURFCLAM (*MACTROMERIS POLYNYMA*) ON BANQUEREAU AND GRAND BANK TO THE END OF THE 2023 FISHING SEASON

Context

An update on the status of the offshore Arctic Surfclam (*Mactromeris polynyma*) resource was requested by Maritimes Region Resource Management to support harvest level decisions in the Arctic Surfclam fishery. Surfclam is assessed on a multi-year assessment schedule, with Stock Status Updates produced in interim years. The basis for assessing Arctic Surfclam on Banquereau and Grand Bank was examined at a framework meeting on June 28–29, 2016. During the framework, a fisheries-dependent assessment methodology was developed for Banquereau using a spatially disaggregated surplus production model (Hublely and Heaslip 2018). This method was used to provide an assessment of the stock status on Banquereau and potential harvest levels based on two removal rates. This report updates fisheries information (landings, catch per unit effort, fishery footprint) and secondary indicators to the end of the 2023 fishing season for both Grand Bank and Banquereau, as well as biomass model results from Banquereau, and assesses them against agreed upon reference points and thresholds. These banks were last assessed in 2017 (DFO 2017, Hubley et al. 2020) with updates conducted annually from 2018 – 2023 (DFO 2023).

This Science Response Report results from the regional peer review on September 12, 2024, on the Stock Status Update for Arctic Surfclam on Banquereau Bank and Grand Bank.

Background

The offshore Arctic Surfclam fishery takes place on Banquereau and Grand Bank (Figure 1). Grand Bank refers to the Eastern Grand Banks fishing area, in NAFO Area 3LNO, with some restrictions as outlined in the licence conditions. Historically, the banks were managed with total allowable catches (TACs) set based on bank-wide estimates of biomass. These biomass estimates were made from scientific surveys, the most recent of which was one survey conducted over three years in 2006, 2008, and 2009 for Grand Bank (Roddick et al. 2011) and 2010 for Banquereau (Roddick et al. 2012). In the absence of new survey data, an assessment approach was developed for Banquereau that restricted biomass estimates to areas of commercially viable densities (a historically fished area) identified from Vessel Monitoring System (VMS) satellite positional data. This method is not currently applied to Grand Bank since fishing effort, specifically swept area, is less than on Banquereau and is dispersed over a larger bank. The stock on Grand Bank is monitored with a set of fishery-dependent secondary indicators for biomass, fishery footprint, and size composition.

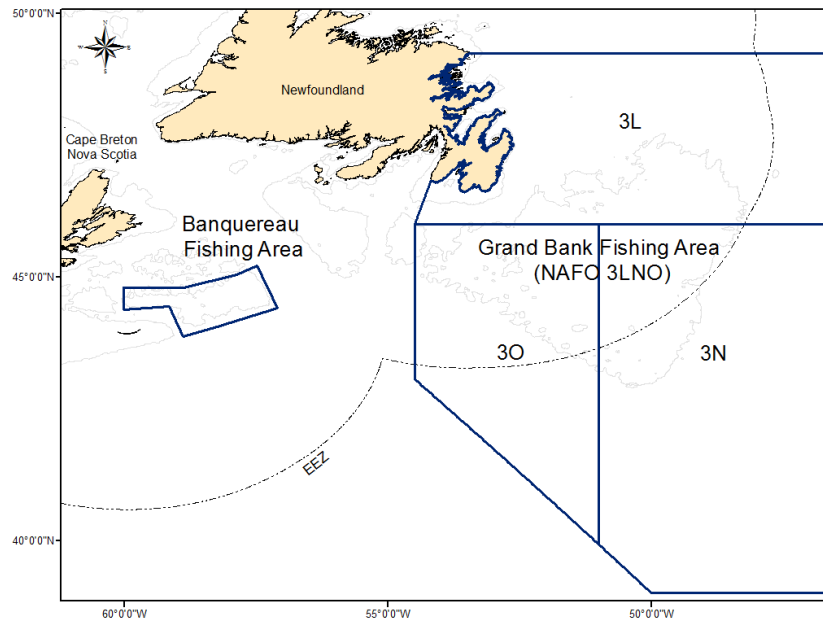


Figure 1. Banquereau and Grand Bank Arctic Surfclam fishing areas (solid lines) from licence conditions.

Description of the fishery

Following a three month test fishery in 1986, an Offshore Clam Enterprise Allocation Program was developed for Arctic Surfclam on Banquereau. The fishery expanded to Grand Bank in 1989, after exploratory fishing on that Bank in 1987 and 1988. In 2023, there were three licences for offshore clam, and three vessels fishing. Currently, quota is transferable between licences but not between banks. Effort has moved between the banks over time, with effort currently split between the two banks. Fishing is conducted from large freezer processors using hydraulic dredges on sandy substrates located at 50 to 110 m depth. The main management tools for the offshore clam fishery are limited entry licences, TAC divided into enterprise allocations, 100% industry-funded dockside monitoring, mandatory logbooks, and 100% VMS coverage (DFO 2020a). Observer requirements are one trip per bank per year (DFO 2020a). On Banquereau in 2023, two full trips and one partial trip were observed. There were no observed trips on Grand Bank in 2023. The protocols for fisheries at-sea observers and the companies doing the work have changed many times over the span of the fisheries on both banks. Work is ongoing to reconcile differences in protocols, including how discards were recorded for retained species during observed and non-observed watches during a trip. On Banquereau in 2023, Arctic Surfclam comprised the largest proportion of the landed species (Tables A1), and three taxa discard in greatest amount were Sand Dollars, whelks, and Ocean Quahog, which in total accounted for 17.2% of the discards by weight (Table A2). Grand Bank observer data for previous years can be found in DFO (2023).

Fishery Data Types and Conversion Factors

Landings in the offshore clam fishery are in the form of products (Table 1). These products are converted to a round weight (i.e., whole animal weight) using conversion factors. Not all landed product types (e.g., mantle) count against the TAC because the product is already accounted for in the conversion of foot product to round weight. The fishery creates three mixed-species

products. C-grade is a mixed product that can contain Surfclam foot, but also parts of other species. A component factor for the C-grade product was developed and used starting in the 2019 fishing year, and reviewed and updated for the start of the 2021 fishery (Table 1). The other mixed species products (recovery and mantle mix) in this fishery do not contain Surfclam foot, and do not have component factors or count against the quota. Although C-grade counts against the TAC for quota monitoring purposes, it is not currently included by DFO Science in the stock assessment model.

Table 1. Arctic Surfclam product types landed in the offshore clam fishery and the component and conversion factors applied to the product type. NA indicates no conversion factor is required for that product because it does not count against TAC.

Product Type	Component (%) and Conversion Factor
Blanched foot (tongue)	6.51
Blanched mantle	NA
C-grade (mixed species product; 2019 – 2020)	80% × 6.51
C-grade (mixed species product; 2021 – present)	86% × 6.51

The other commonly retained species in the offshore clam fishery are Northern Propeller Clam (*Cyrtodaria siliqua*), Greenland Smooth Cockle (*Serripes groenlandicus*), and Ocean Quahog (*Arctica islandica*). These are also landed as products and converted to a round weight for monitoring (Table 2). Conversion factors for Greenland Cockle and Ocean Quahog are based on a Statistical Coordinating Committee for the Atlantic Coast report (STACAC 1984). The conversion factor for Northern Propeller Clam was changed in 2023 based on industry data collected from 2019 to 2022. The new conversion factor is 3.84, which was determined to be more appropriate for the fishery than 5.5 which had been used previously¹. This conversion factor was put in place at the start of the 2023 fishery. The 3.84 conversion factor is applied retroactively in this report and as a result the landings will be different from previous reports but the trends have not changed.

There are component factors for the Greenland Cockle portion of the C-grade product for Banquereau and Grand Bank (DFO 2022). The Northern Propeller Clam portion of the C-grade is negligible (< 0.13%) and a component factor is not used for that species (DFO 2022).

Table 2. Other species product types landed in the offshore clam fishery and the component and conversion factors applied to the product types. Conversion factors apply to both banks unless otherwise stated.

Species	Product Type	Component (%) and Conversion Factor
Northern Propeller Clam	Blanched siphon	3.84
Greenland Cockle	Blanched foot (tongue)	5.5
Greenland Cockle	Raw foot (tongue)	5.5
Greenland Cockle (Banquereau)	C-grade (mixed species product)	12% × 5.5
Greenland Cockle (Grand Bank)	C-grade (mixed species product)	8.8% × 5.5
Ocean Quahog	Foot (tongue)	6.0

¹ Element, G. and Nasmith, L.E. in prep. Conversion Factor for Northern Propeller Clam (*Cyrtodaria Siliqua*) Siphon to Round Weight in the Banquereau and Grand Bank Offshore Clam Fishery. Can. Data Rep. Fish. Aquat. Sci.

Fishery Data Management and Data Review

Commercial data used in this assessment are stored in the Offshore Clam Data Archival (CLAM) database. Fishing data are supplied to DFO Science directly from industry and loaded into the CLAM database. Before and during loading, the raw data are validated against data integrity checks (e.g., expected ranges for certain values, expected unit types) and potential errors are discussed with industry and corrected before being stored in the database. This database is separate from the databases used in the two regions to store commercial data for quota monitoring: the Maritime Fishery Information System 1.0 and 2.0 (MARFIS) and Newfoundland and Labrador Region's Catch and Effort database. Unless otherwise noted in the document, data being used are from the CLAM database.

Analysis and Response

Commercial Fishery

In 2023, Arctic Surfclam landings in the MARFIS and Catch and Effort databases were 20,020 t against a TAC of 20,943 t for Banquereau and 14,796 t against a TAC of 14,756 t for Grand Bank. On Grand Bank, the mean catch per unit effort (CPUE) in 2023 was 232 g/m², an increase from 213 g/m² in 2022. On Banquereau in 2023, mean CPUE was 145 g/m², a decrease from the time series high of 177 g/m² in 2022. Landings and CPUE times series for both banks are shown in Figure 2.

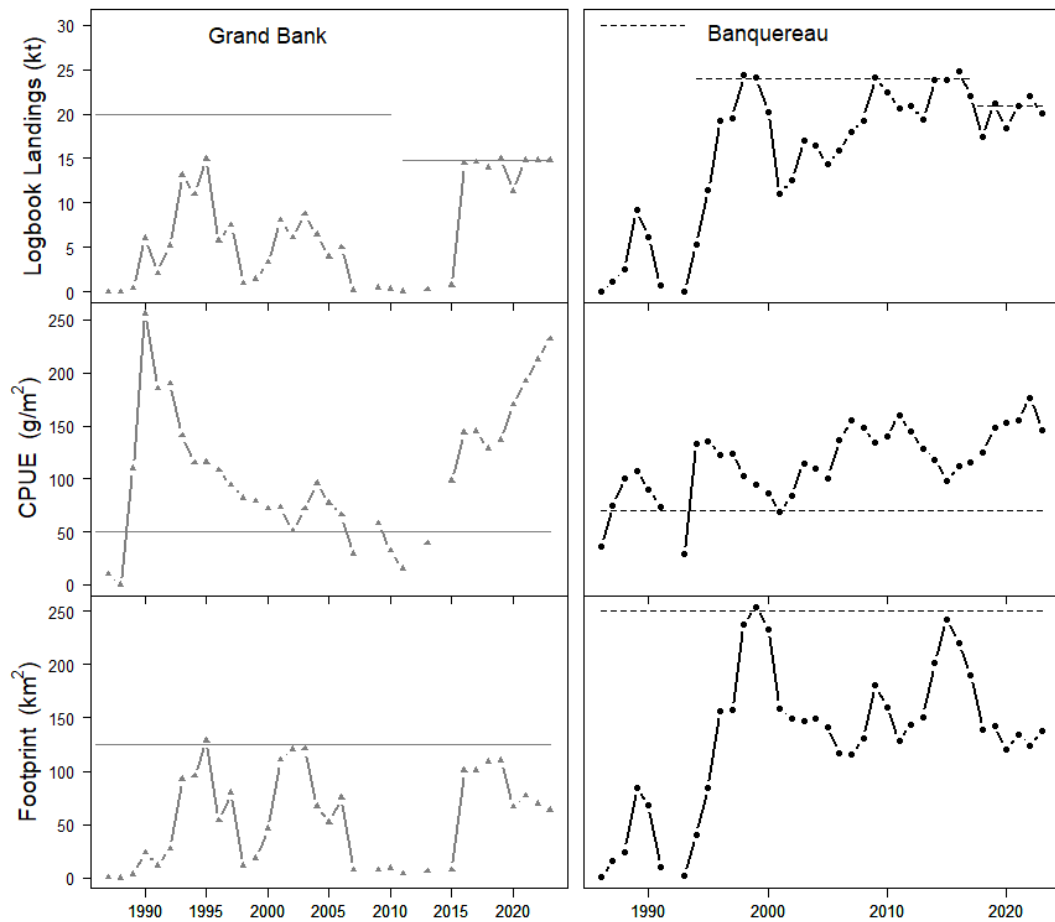


Figure 2. Landings in kilotonnes (kt), catch per unit effort (CPUE; g/m²), and fishery footprint (km²) for Grand Bank (left) from 1987 to 2023 and Banquereau (right) from 1986 to 2023. Horizontal lines represent bank-specific total allowable catch (top panels) or threshold levels for secondary indicators (bottom four panels; see: Indicators of Stock Status).

Spatial Production Model for Banquereau

Following the 2016 Framework (Hubley and Heaslip 2018), the stock definition for Banquereau has been restricted to the area directly under exploitation. Five spatial assessment areas are used to divide Banquereau (Figure 3). Within these areas, the fished (exploited) areas are determined using VMS data, which are used as a proxy for Surfclam habitat (Figure 4). For each of the five assessment areas, a surplus production model was fit to a time series of CPUE data. Areal expansion of the Surfclam density (g/m²) was limited to the fished area.

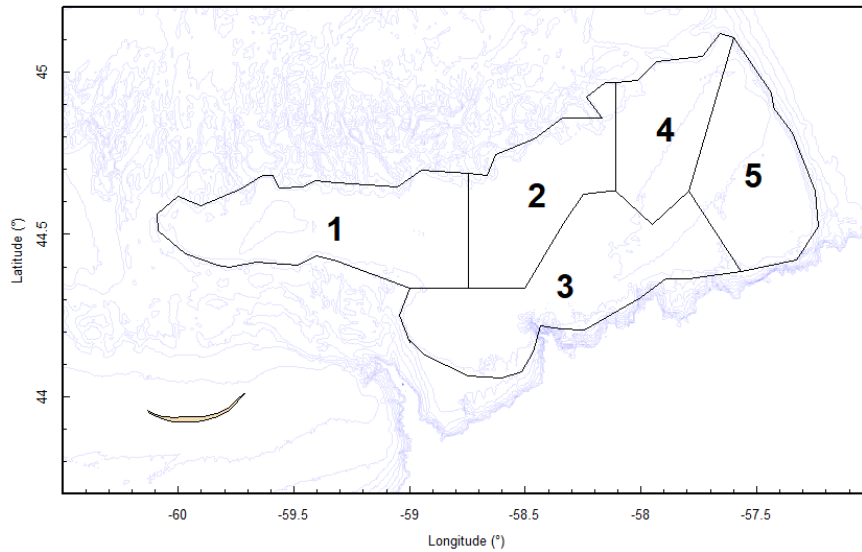


Figure 3. Five spatial assessment areas on Banquereau used in the assessment.

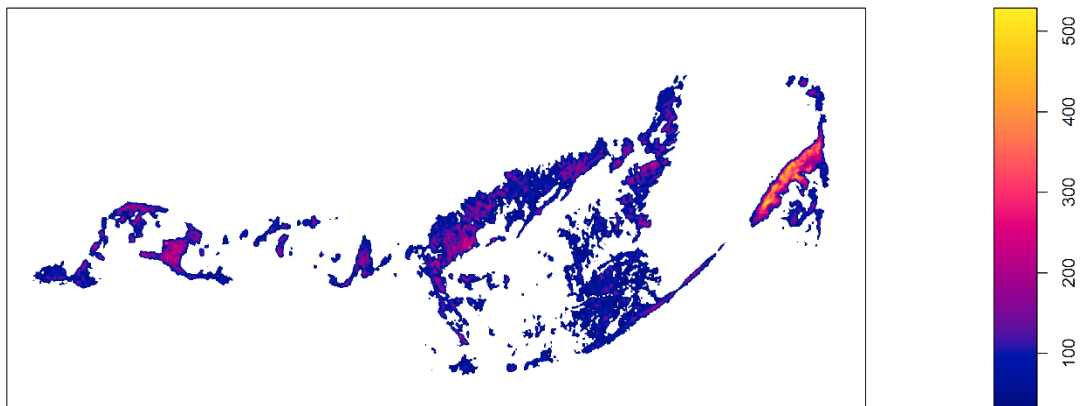


Figure 4. Vessel Monitoring System (VMS) density on Banquereau estimated from a kernel smoothed intensity function with a standard deviation of 0.2 on a 100 m² resolution. The scale bar shows VMS intensity expressed as the number of transmissions (pings) per km² for 2004–2016. The colored region shows the area where VMS intensity is greater than 30 pings/km².

The annual CPUE index used in the model is shown in Figure 5. Mean catch rates from 2022 to 2023 decreased in areas 2 and 5 by 13% and 28%, respectively. Mean catch rates in all other areas changed by less than 2% from 2022. Area 5 had the highest catch rates in 2023 at 157 t/km².

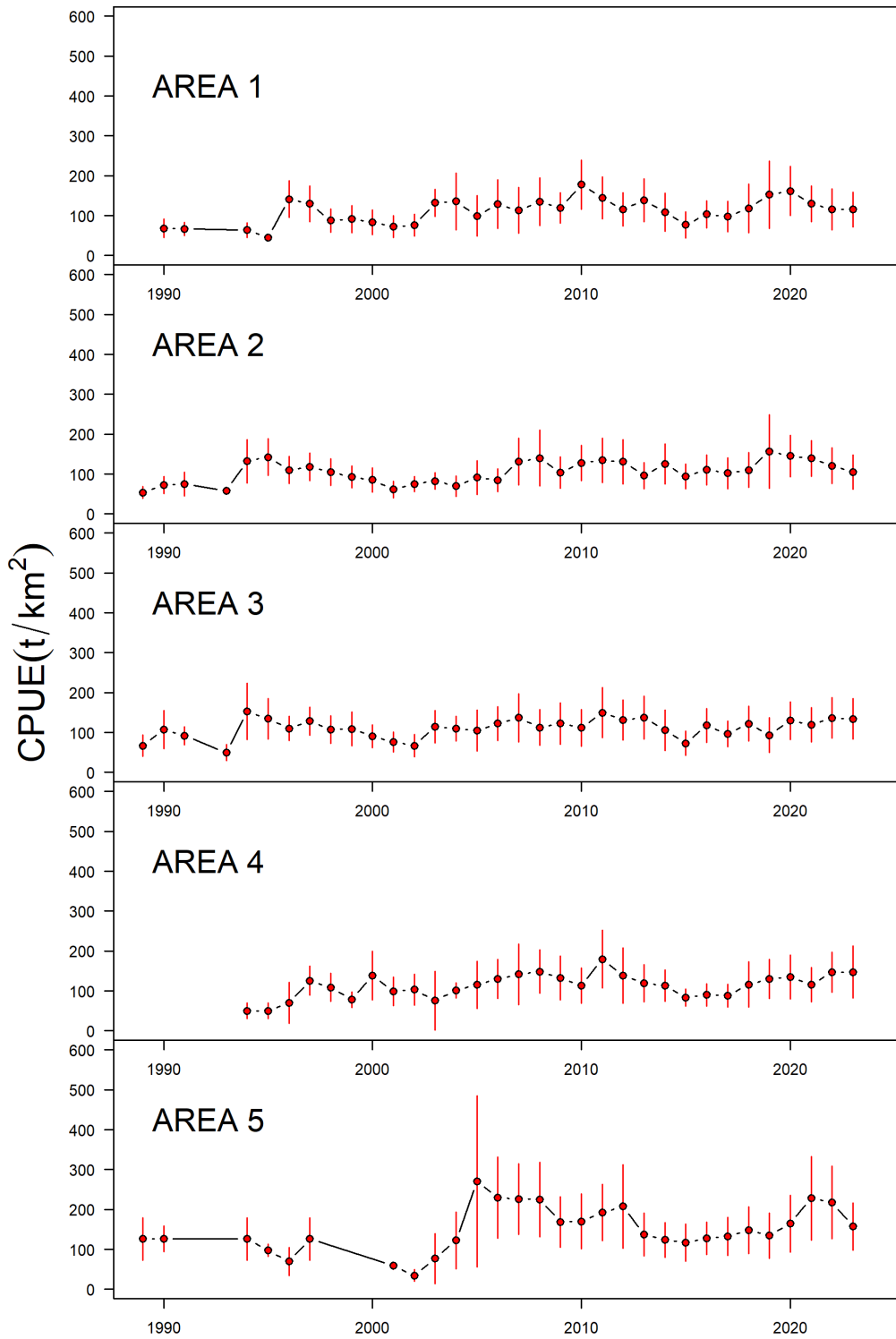


Figure 5. Banquereau catch per unit effort (CPUE; tonnes per km²) by spatial assessment area (1 to 5) showing the annual mean values (red points) ± 1 standard error (red lines).

The modelled estimate of exploitation rates (catch divided by biomass, from the model) for each assessment area demonstrates the movement of the fishery among the different areas in different years (Figure 6). Increases in exploitation rate within an assessment area are generally followed by a reduced rate in subsequent years. In 2023, exploitation rates increased in areas 3 and 4, and decreased in the other areas. The exploitation rate in area 5 was the highest overall at 0.101. Exploitation rates in the other areas ranged from 0.008 to 0.037.

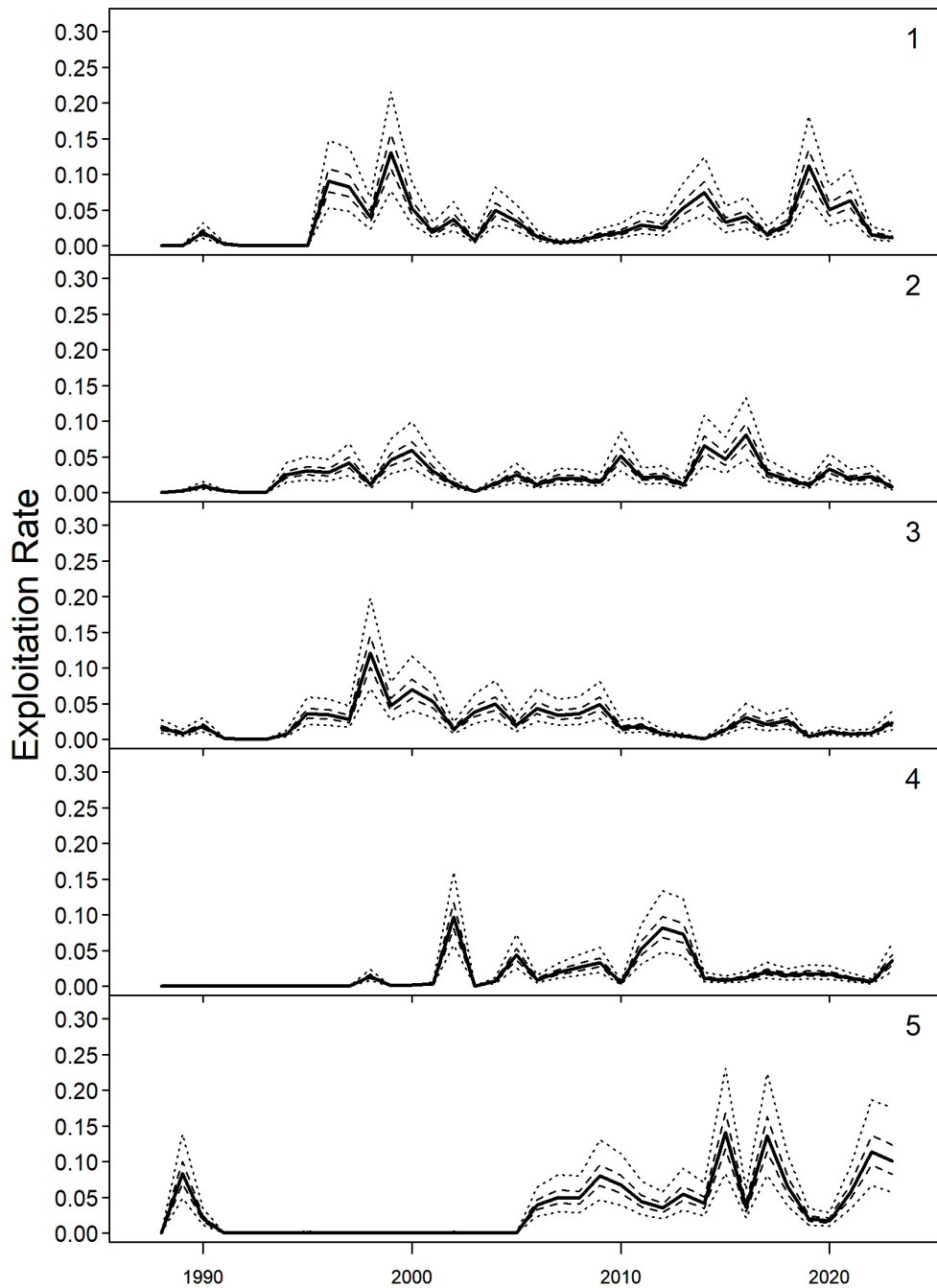


Figure 6. Estimates of exploitation rate on Banquereau for 1988 to 2023 from the spatial production model by assessment area. Lines denote the median (solid), 50% credible interval (dashed), and 95% credible interval (dotted).

Median areal biomass estimates from the model in 2023 indicate all areas are within 7% of the biomass estimates in the previous year, with the exception of area 5 which had a 17% decline in biomass (Figure 7).

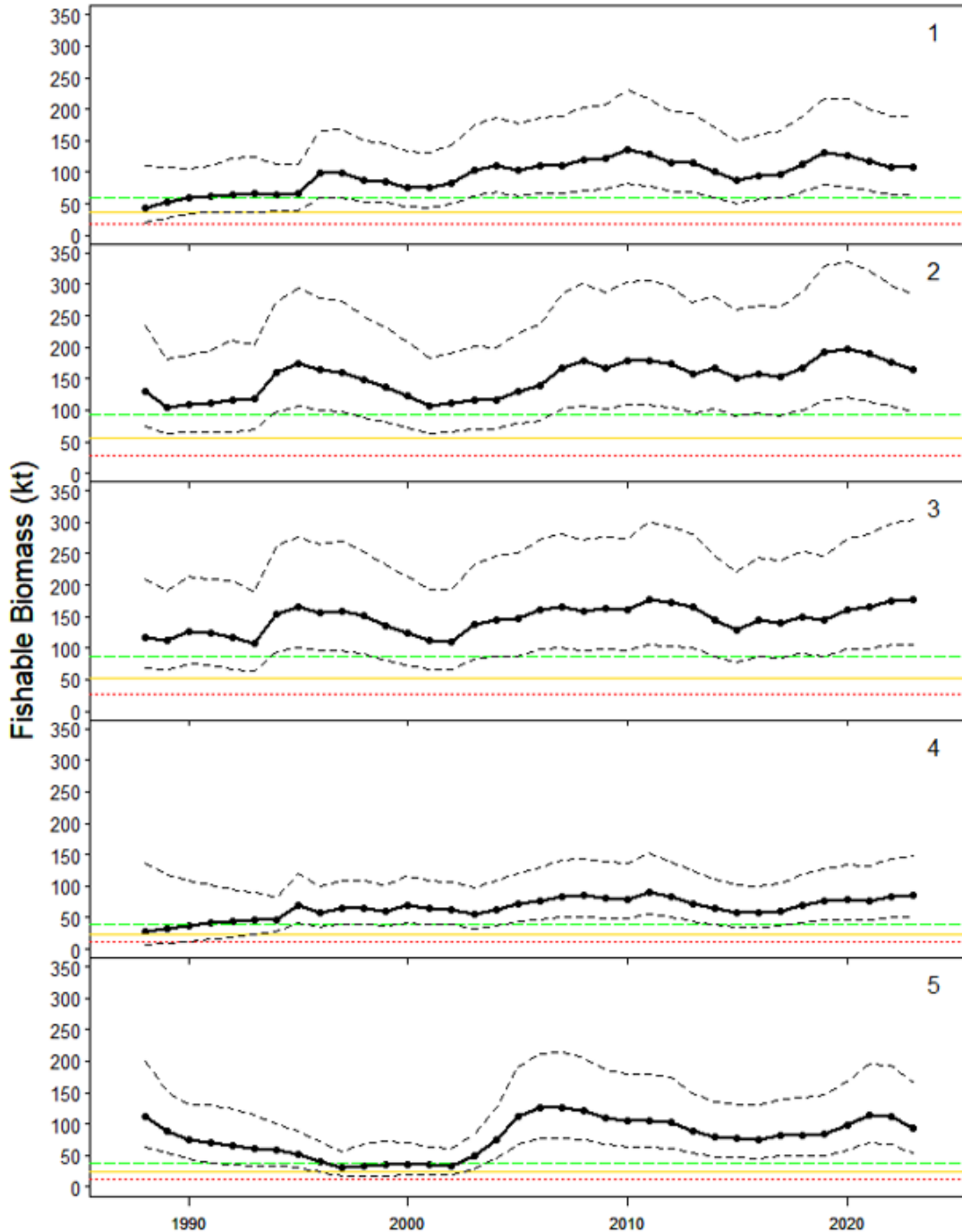


Figure 7. Estimates of fishable biomass (kilotonnes) on Banquereau from the spatial production model by assessment area. Black lines denote the median estimate (solid line with circles) and 95% credible interval (dotted line). The horizontal lines represent (from top to bottom): CPUE₇₀ reference (green), upper stock reference (yellow), and limit reference point (red).

Indicators of the stock status

Three secondary indicators of stock status were developed for Banquereau and Grand Bank based on commercial fishery data. Data for the secondary indicators are not restricted to the fished area used for biomass modelling. The CPUE is the biomass indicator, and the thresholds are 70 g/m² for Banquereau and 50 g/m² for Grand Bank. Both banks were above the CPUE indicator threshold in 2023 (Figure 2). Fishery footprint is an indicator of the spatial extent of the fishery and stock density, calculated as the sum of the area dredged, with no adjustment for overlapping tows. As densities decline the footprint will increase as more area is fished to maintain landings, or as the fishery searches for new high density areas. The footprint thresholds are 250 km² for Banquereau and 125 km² for Grand Bank. Both banks were below the footprint threshold in 2023 (Figure 2). The relative abundance of old, large clams is monitored as the size composition indicator with the objective of maintaining older age classes in the stock. Large changes in the size composition indicator between years could be a function of fishing location, as the size composition of the stock can vary across the bank. The size composition indicator is 1% of the unsorted catch being greater than or equal to 120 mm for Banquereau, or 0.5% being greater than or equal to 105 mm for Grand Bank. Both banks were above the size composition indicator threshold in 2023 (Table 3).

Table 3. Percent of large clams in unsorted commercial catch and sample size (n) for Grand Bank and Banquereau. Threshold is 1% for Banquereau and 0.5% for Grand Bank. Only ten years of data shown. A dash (-) indicates no data available.

Year	Grand Bank	Grand Bank	Banquereau	Banquereau
	% > 105 mm	n	% > 120 mm	n
2014	-	-	1.61	14,327
2015	19.17	600	1.53	15,237
2016	16.97	9,000	2.28	19,667
2017	15.95	7,598	2.51	17,195
2018	11.35	8,000	1.14	16,895
2019	9.72	9,300	2.43	15,599
2020	17.25	6,998	3.81	13,798
2021	10.90	7,493	2.10	15,191
2022	11.12	7,293	1.11	12,785
2023	1.67	6,298	4.58	11,943

Biomass based reference points have been presented for Banquereau (Hubley et al. 2020) based on the default 0.4 and 0.8 B_{MSY} (Biomass at Maximum Sustainable Yield) often used to define the limit reference point (LRP) and upper stock reference (USR). These biomass reference points are based on the fished area biomass, not the entire bank. Due to the potential that these values are underestimated for this stock, it was proposed that the stock status also be assessed against the previously established CPUE threshold level of 70 g/m². This reference value (CPUE₇₀) was translated into biomass estimates for each assessment area (i.e., green

line in Figure 7). In 2023, the probability that the biomass estimate was above the USR and the CPUE₇₀ reference line was 0.98 or greater for all areas (Table 4).

The fishery on Banquereau does not operate based on individual TACs for each assessment area. Fishing can occur anywhere on the Bank; therefore, the TAC is determined from the total biomass in all fished areas of the Bank (Figure 8). In 2023, the estimated median total biomass in the fished areas was 626,699 t (95% CI: 371,569 – 1,093,003 t). The probability that the total bank biomass from the five assessment areas combined was above the USR and the CPUE₇₀ reference line was greater than 0.99 (Table 4).

Table 4. Probability that median biomass estimates are above the limit reference point (LRP), upper stock reference (USR), and a CPUE of 70 g/m² (CPUE₇₀) for each assessment area (1 – 5) and for the total area on Banquereau.

Area	LRP	USR	CPUE ₇₀
1	> 0.99	> 0.99	0.99
2	> 0.99	> 0.99	0.98
3	> 0.99	> 0.99	> 0.99
4	> 0.99	> 0.99	> 0.99
5	> 0.99	> 0.99	> 0.99
Total	> 0.99	> 0.99	> 0.99

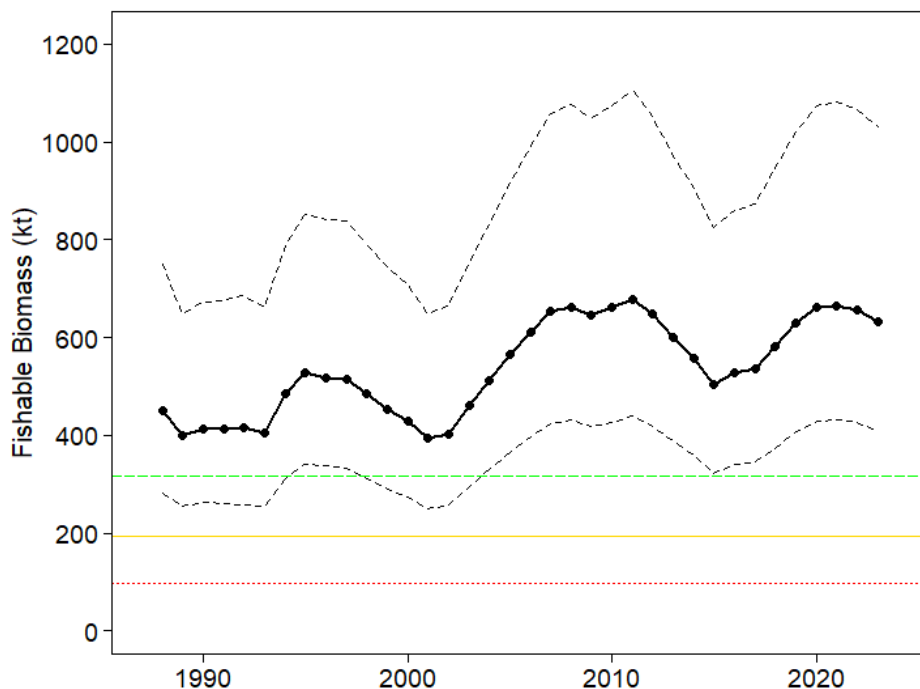


Figure 8. Estimate of fishable biomass (kilotonnes) on Banquereau from 1988 to 2023 from the spatial production model for the total fished area. Black lines denote the median estimate (solid line with circles) and 95% credible interval (dotted line). The horizontal lines represent (from top to bottom): CPUE₇₀ reference (green), upper stock reference (yellow), and limit reference point (red).

Other Retained Catch in the Fishery

The Offshore Clams Integrated Fishery Management Plan (DFO 2020a) allows for the retention of other clam species. There are no limits on the bycatch of Northern Propeller Clam or Greenland Cockle, and there are limits for Ocean Quahog. In August 2021, the fishery switched from a policy of partial retention to one of 100% retention for Greenland Cockle and Northern Propeller Clam. Comparison of data before and after this time should take that into consideration. Greenland Cockle landings decreased on both banks from 2022 to 2023. On Grand Bank, 2023 landings were within the range seen in recent years (Figure 9). On Banquereau, the landings were the lowest in the past decade (Figure 10). This decline on Banquereau is likely a function of the patchy distribution of the species and the areas fished in 2023, not an underlying decline in biomass. The areas with the highest historical average landings of Greenland Cockle are areas 1 and 2 (DFO 2022). In 2023, effort in these two areas declined from 2022 by 25% and 61%, respectively. Effort in area 3, with the lowest average historical landings (DFO 2022), increased by 167%. On Grand Bank, landings of Northern Propeller Clam decreased in 2023 from the time series high in 2022 (Figure 9). Northern Propeller Clam landings on Banquereau increased in 2023 to a new series high of 6,619 t (Figure 10). Quahog landings have been minimal on both banks since the late 1990s. Ocean Quahog catch is limited on Grand Bank to 10% of Surfclam catch, to a maximum of 500 t. On Banquereau, there is an Ocean Quahog TAC of 800 t. In 2023, the TAC was not exceeded for Ocean Quahog on either bank (Figures 9 and 10).

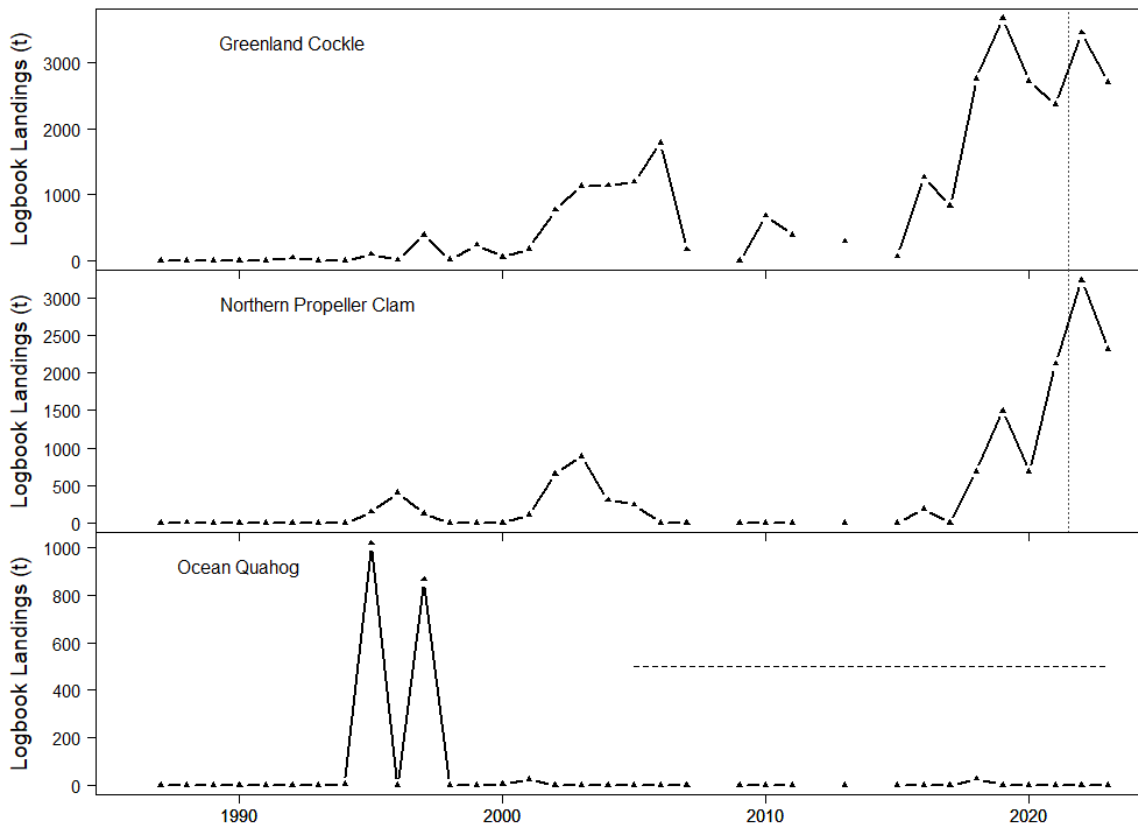


Figure 9. Landings from the fishery logbooks for three other clam species on Grand Bank from 1987 to 2023. Note different y-axis scales. Dashed horizontal line is the maximum catch limit for Grand Bank. Vertical line denotes a change from partial to full retention in the fishery.

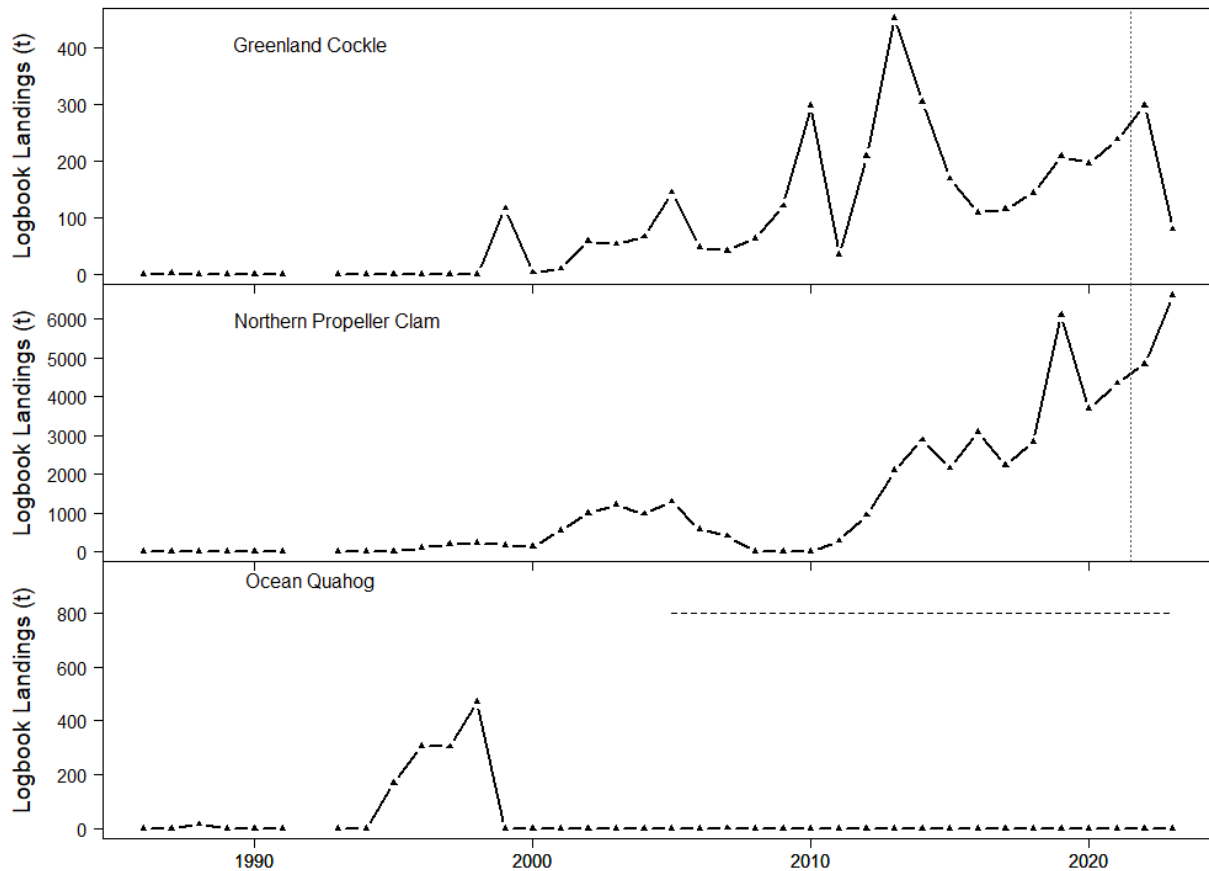


Figure 10. Landings from the fishery logbooks for three other clam species on Banquereau from 1986 to 2023. Note different y-axis scales. Dashed horizontal line is total allowable catch for Banquereau. Vertical line denotes a change from partial to full retention in the fishery.

Sources of Uncertainty

This fishery is increasing in efficiency. This is evident in the relationship between CPUE and effort, and is the opinion of Industry participants. Efficiencies have been gained in vessel capacity and the use of technology to locate, sort, and process the catch. The increasing ability of industry to maximize their catchability is not accounted for in the current model. These increases in efficiency and catchability can obscure actual biomass trends. There are no recent fishery independent data sources from which to estimate biomass or stock indicators. The last survey on Banquereau was in 2010, and the last surveys on Grand Bank were in 2006, 2008, and 2009.

The spatial production model parameters for growth rate and carrying capacity are partly confounded and potentially biased because a high growth rate and low carrying capacity give the model more flexibility to fit the data. If the growth rate estimate is too high, and carrying capacity too low, reference points are likely to be overly optimistic (higher F_{MSY} —Fishing Mortality at Maximum Sustainable Yield, and lower B_{MSY}). This is likely happening with the reference points for Banquereau.

Conclusions

The Banquereau fished area stock is considered to be in the Healthy zone; the 2023 biomass estimate is above the LRP, USR, and CPUE₇₀ references and this is supported by the secondary indicators. All the secondary indicators for Grand Bank are positive relative to their respective thresholds.

Potential removals were calculated using the 2023 median biomass estimates from the spatial production model. A removal rate of 0.5 F_{MSY} would result in a TAC (27,651 t) that is greater than the recent TACs for Banquereau (20,943 t from 2018 – 2023). The TACs in this time period were lower than the removal amount at 0.5 F_{MSY} (e.g., DFO 2023). A removal rate of 0.33 M, where M is the natural mortality rate of 0.08 (Hubley and Heaslip 2018), would result in a much lower TAC when applied to the fished area biomass (Table 5). Previous analyses based on the surplus production model have estimated F_{MSY} near 0.09; however, catch rates tend to decline when the removal reference (F) is greater than 0.045 (0.5 F_{MSY}). The removal reference rate of 0.5 F_{MSY} was proposed as an intermediate value between 0.33 M (which was developed for a larger, less productive stock area) and F_{MSY} .

Table 5. Areal removals in tonnes for removal reference rates (F) for assessment areas (1 – 5) on Banquereau calculated using the 2023 median biomass estimates from the spatial production model.

Removal Reference (F)	Area 1	Area 2	Area 3	Area 4	Area 5	Total
0.5 F_{MSY} (0.045)	4,750	7,220	7,759	3,785	4,137	27,651
0.33 M (0.026)	2,771	4,211	4,525	2,208	2,413	16,128

Contributors

Name	Affiliation
Leslie Nasmith (Lead)	DFO Science, Maritimes Region
Monica Bravo	DFO Science, Maritimes Region
Tim Barrett	DFO Science, Maritimes Region
Liza Tsitrin	DFO Science, Maritimes Region
Lottie Bennett	DFO Science, Maritimes Region
Corinne Pomerleau	DFO Resource Management, Maritimes Region
Carl MacDonald	DFO Resource Management, Maritimes Region

Approved by

Francine Desharnais
Regional Director of Science
DFO Maritimes Region
Dartmouth, Nova Scotia
Phone: 902-426-3490
Date: 2024-09-30

Sources of Information

- DFO. 2017. [Assessment of the Arctic Surfclam \(*Mactromeris polynyma*\) Stock of Banquereau for 2016](#). DFO Can. Sci. Advis. Sec. Sci. Advis. Rep. 2017/047.
- DFO. 2020a. [Offshore clam - Maritimes and Newfoundland and Labrador regions](#). Fisheries and Oceans Canada. (Accessed 6 August 2024).
- DFO. 2020b. [Stock Status Update for Arctic Surfclam \(*Mactromeris polynyma*\) on Banquereau and Grand Bank to the end of the 2019 Fishing Season](#). DFO Can. Sci. Advis. Sec. Sci. Resp. 2020/057.
- DFO. 2022. [Review of Methods for Developing Catch Limits for Greenland Cockle \(*Serripes groenlandicus*\) and Northern Propeller Clam \(*Cyrtodaria siliqua*\) in the Banquereau and Grand Bank Offshore Clam Fisheries](#). DFO Can. Sci. Advis. Sec. Sci. Advis. Rep. 2021/054.
- DFO. 2023. [Stock Status Update of Arctic Surfclam \(*Mactromeris polynyma*\) on Banquereau and Grand Bank to the End of the 2022 Fishing Season](#). DFO Can. Sci. Advis. Sec. Sci. Resp. 2023/039.
- Hubley, B., and Heaslip, S.G. 2018. [Data Review and Assessment Framework of the Arctic Surfclam \(*Mactromeris polynyma*\) on Banquereau and Grand Bank](#). DFO Can. Sci. Advis. Sec. Res. Doc. 2017/069. v + 49 p.
- Hubley, B. Heaslip, S.G., and Stanley, R.R.E. 2020. [Assessment of the Arctic Surfclam \(*Mactromeris polynyma*\) stocks on Banquereau and Grand Banks](#). DFO Can. Sci. Advis. Sec. Res. Doc. 2018/063. vi + 65 p.
- Roddick, D., Brading, J., Carrigan, L., Davignon-Burton, T., Graham, S., and McEwen, C. 2011. [Assessment of the Arctic Surfclam \(*Mactromeris polynyma*\) stock on Grand Bank](#). DFO Can. Sci. Advis. Sec. Res. Doc. 2011/052: 59.
- Roddick, D., Brading, J., Carrigan, L., Davignon-Burton, T., Graham, S., and McEwen, C. 2012. [Assessment of the Arctic Surfclam \(*Mactromeris polynyma*\) stock on Banquereau in 2010](#). DFO Can. Sci. Advis. Sec. Res. Doc. 2012/050: 59.
- Statistical Coordinating Committee for the Atlantic Coast (STACAC). 1984. Standard Conversion Factors: All Species. STACAC Standards Document No. 2. Fisheries and Oceans Canada.

Appendix

Table A1. International Observer Program data on the percent (by weight) composition of landed species from Banquereau by year for the offshore clam fishery. Numbers under the years are the total number of observed trips for that year, partially observed trips are indicated as the proportion of observed days in the trip. Vertical line breaks represent potential changes in observer protocols. Dash (-) denotes species not present in that year. Only data collected since 2010 are shown, for older data see DFO2020b.

Common Name	2010	2011	2012	2013	2014	2015	2018	2019	2020	2021	2022	2023
	0.99	1	2	2	1	2	1	1	1	2	0.88	2.04
Arctic Surfclam	100	98.5	89.8	51.1	95.4	93.2	91.1	85.2	77.1	84.6	92.4	71.6
Northern Propeller Clam	-	-	7.4	10.9	4.2	6.3	8.9	13.9	22.1	15.0	7.2	27.9
Atlantic Surfclam	-	-	-	33.7	-	-	-	-	-	-	-	-
Greenland Smooth Cockle	-	1.5	2.9	4.3	0.4	0.5	-	0.6	0.8	0.3	0.4	0.6
Ocean Quahog	-	-	-	< 0.01	0.01	0.03	-	0.3	-	-	-	-

Table A2. International Observer Program data of percent (by weight) composition of discards in the offshore clam fishery on Banquereau. Only species making up the top 99.99% (by weight) of the catch composition are shown. Numbers under the years are the total number of observed trips for that year, partially observed trips are indicated as the proportion of observed days in the trip. Vertical line breaks represent potential changes in observer protocols. Dash (-) denotes species not present in that year. Only data collected since 2010 are shown, for older data see DFO2020b.

Common Name	2010	2011	2012	2013	2014	2015	2018	2019	2020	2021	2022	2023
	0.99	0.9	2	2	1	2	1	1	1	2	0.88	2.04
Shells	14.2	34.2	13.6	40.4	24.4	33.8	67.1	26.0	47.1	45.0	75.9	69.5
Stones and Rocks	7.9	21.8	28.5	14.3	43.4	33.8	9.8	60.2	39.8	14.5	3.6	10.3
Sand Dollars	63.2	38.8	52.3	39.9	22.3	27.3	15.0	6.2	6.5	16.3	16.3	14.4
Sea Cucumbers	9.2	0.3	0.1	0.5	2.9	1.0	3.9	3.7	2.5	1.5	0.1	0.3
Whelk - Buccinidae	1.8	4.3	2.6	3.2	3.3	2.1	1.9	0.4	0.5	4.5	1.1	1.3
Sea Mouse	-	-	-	-	-	-	0.5	0.8	0.9	2.2	0.5	0.4
Sea Urchin - Echinoidea	0.4	0.3	0.4	0.2	1.7	0.3	0.5	0.4	0.3	2.7	0.2	0.2

Common Name	2010	2011	2012	2013	2014	2015	2018	2019	2020	2021	2022	2023
	0.99	0.9	2	2	1	2	1	1	1	2	0.88	2.04
Ocean Quahog	-	-	-	-	-	-	-	-	0.1	2.3	0.8	1.5
Hermit Crab - Paguridae	< 0.1	0.1	0.2	0.2	0.3	0.2	0.1	0.5	0.3	2.0	0.2	0.2
Sand Lances	0.1	0.1	0.2	-	0.2	0.1	0.1	0.3	0.3	1.3	0.1	0.1
Sea Star	-	< 0.1	0.3	0.1	1.1	0.3	0.1	0.5	0.3	0.5	0.1	0.2
Thorny Skate	1.8	< 0.1	< 0.1	< 0.1	0.2	0.1	< 0.1	-	< 0.1	1.3	0.1	0.3
Mussel	0.1	-	0.1	0.1	0.1	0.2	-	-	< 0.1	1.2	0.4	0.2
Giant Sea Scallop	< 0.1	< 0.1	< 0.1	< 0.1	0.1	< 0.1	-	0.4	0.3	0.1	-	0.2
Scallop	0.7	-	-	0.1	-	< 0.1	0.7	-	-	0.5	0.1	-
Iceland Scallop	< 0.1	0.1	< 0.1	< 0.1	0.1	< 0.1	-	< 0.1	0.1	0.6	-	0.1
Sea Anemone	-	-	-	-	-	< 0.1	< 0.1	0.2	0.2	0.4	0.1	< 0.1
Thorny-headed Worms	-	-	-	-	-	-	< 0.1	0.1	0.2	0.4	< 0.1	< 0.1
Snow or Queen Crab	-	0.1	0.1	0.1	< 0.1	0.1	-	< 0.1	0.1	0.3	< 0.1	< 0.1
Brittle Stars	-	-	< 0.1	-	-	-	-	-	-	0.3	< 0.1	0.1
Greenland Smooth Cockle	-	-	-	-	-	-	-	-	0.2	0.2	-	< 0.1
Northern Propeller Clam	-	-	-	-	-	-	-	-	-	0.2	-	0.2
Yellowtail Flounder	0.1	< 0.1	0.1	0.1	< 0.1	< 0.1	< 0.1	< 0.1	-	0.2	-	0.1
Witch Flounder	-	-	-	-	-	-	-	-	-	0.3	-	-
Atlantic Rock Crab	-	-	-	-	-	-	-	0.2	0.1	0.1	-	-
American Plaice	< 0.1	-	< 0.1	< 0.1	< 0.1	< 0.1	-	< 0.1	< 0.1	0.2	-	< 0.1
Smooth Skate	-	-	-	-	< 0.1	< 0.1	-	-	-	0.2	-	-
Sand	-	-	1.0	< 0.1	-	-	-	-	-	-	-	-
Toad Crab – <i>Hyas sp.</i>	-	< 0.1	< 0.1	0.1	< 0.1	< 0.1	-	-	-	< 0.1	-	< 0.1
Longhorn Sculpin	< 0.1	-	-	-	-	-	-	< 0.1	< 0.1	0.1	< 0.1	< 0.1
Annelid	-	-	< 0.1	-	-	0.7	-	-	-	-	-	-

Maritimes Region

Science Response: Arctic Surfclam on Banquereau and Grand Bank

Common Name	2010	2011	2012	2013	2014	2015	2018	2019	2020	2021	2022	2023
	0.99	0.9	2	2	1	2	1	1	1	2	0.88	2.04
Skates	< 0.1	< 0.1	0.1	0.1	-	-	-	-	-	0.1	-	-
Silver Hake	-	-	-	-	-	-	-	-	-	0.1	< 0.1	> 0.1
Polychaete	-	-	0.1	0.5	-	-	-	-	-	-	-	-
Whelk Eggs	-	-	-	-	-	-	-	< 0.1	< 0.1	-	-	-
Razor Clam	-	-	-	-	-	-	-	-	-	-	< 0.1	< 0.1
Foreign Articles/Garbage	-	-	-	-	-	-	-	-	-	0.1	-	< 0.1
Coral	< 0.1	< 0.1	-	< 0.1	-	-	-	-	-	< 0.1	-	< 0.1

This Report is Available from the:

Center for Science Advice (CSA)
Maritimes Region
Fisheries and Oceans Canada
Bedford Institute of Oceanography
1 Challenger Drive, PO Box 1006
Dartmouth, Nova Scotia B2Y 4A2

E-Mail: MaritimesRAP.XMAR@dfo-mpo.gc.ca
Internet address: www.dfo-mpo.gc.ca/csas-sccs/

ISSN 1919-3769

ISBN 978-0-660-74493-3 Cat. No. Fs70-7/2024-038E-PDF

© His Majesty the King in Right of Canada, as represented by the Minister of the
Department of Fisheries and Oceans, 2024



Correct Citation for this Publication:

DFO. 2024. Stock Status Update of Arctic Surfclam (*Mactromeris polynyma*) on Banquereau and Grand Bank to the End of the 2023 Fishing Season. DFO Can. Sci. Advis. Sec. Sci. Resp. 2024/038.

Aussi disponible en français :

MPO. 2024. Mise à jour sur l'état du stock de la mactre de Stimpson (Mactromeris polynyma) sur le Banquereau et le Grand Banc à la fin de la saison de pêche 2023. Secr. can. des avis sci. du MPO. Rép. des Sci. 2024/038.