



Newfoundland and Labrador **ANGLERS' GUIDE 2023-2024**



Salmon Angling
Return Form

The angler logbook information is an important tool in the salmon assessment process, and your support is vital. Please submit your log information.
<https://www.nfl.dfo-mpo.gc.ca/en/form/salmon-angling-return-form>

Don't forget to download the Anglers' Guide
<https://www.nfl.dfo-mpo.gc.ca/NL/AG/anglersguide>



Anglers' Guide

CATCH-AND-RELEASE ADVICE

Practice safe and responsible release techniques to help ensure salmon survival.

Follow these procedures to minimize injury to fish:

- Barbless hooks must be used.
- Do not use a tailer.
- When using a landing net, use one with knotless mesh, as it is less harmful to fish scales, gills and eyes.
- A leader tip should be heavy enough to bring in large salmon quickly, or light enough to allow large salmon to break off.
- Move to a quiet water location.
- Bring the fish quickly into reach, or break it off after a couple of runs.
- Do not beach the salmon; keep the entire salmon underwater as much as possible.
- Handle the salmon gently; do not squeeze the fish and avoid touching the gills and eyes. Loss of scales and damage to the gills caused by pressure on the gills or by removal from the water are the most serious injuries a salmon can suffer.
- Remove the hook gently with pliers or with your thumb and forefinger. If the hook must be left in, cut the leader as close to it as possible.
- Support the fish under the belly, keeping it in an upright position, underwater and facing into the current.
- Measure your fish and have a photo taken. Remember to keep the fish in the water at all times and do not hold the fish vertically by the tail.
- Be patient. Give the fish as much time as it needs to recover and swim away on its own.
- Anglers should cease catch-and-release angling in extreme environmental conditions (low water levels and high water temperatures).

REMEMBER:

Landing, reviving and releasing your fish as quickly as possible and following the above procedures will increase the chances of fish survival.

NEW FOR THE 2023-2024 ANGLERS' GUIDE

There is a new look and format in the 2023-24 Anglers' Guide. However, management measures remain the same:

- Retention of a total of two salmon with a maximum of one salmon on Class 2 rivers.
- Environmental Protocol.
- Retention of salmon is not permitted on non-scheduled waters.
- Catch and Release limits of three salmon per day for Newfoundland and Labrador.

Let's work together and stop illegal fishing activities in our rivers, report it directly to DFO.

1-833-DF0-TIPS (336-8477)

RESOURCES AVAILABLE ONLINE:

Important Phone numbers – Available in Annex 1 or online at <https://www.nfl.dfo-mpo.gc.ca/en/NL/AG/TelephoneNumbers>

Download Anglers' Guide to your smartphone at <https://www.nfl.dfo-mpo.gc.ca/NL/AG/anglersguide>

In-Season River Status – Check prior to angling to ensure the river is open by calling (709)772-2045 or online at <https://www.nfl.dfo-mpo.gc.ca/nfl-tnl/en/isrs>

Keep informed on Salmon Counts every week at <https://www.nfl.dfo-mpo.gc.ca/en/atlantic-salmon-fishway-counts>

A video on best practices for catch and release can be found online at <http://dfo-mpo.gc.ca/videos/practices-pratiques-eng.html>

Additional Resources can be found online at <https://www.nfl.dfo-mpo.gc.ca/NL/AG/anglersguide>

CONTENTS

SALMON

Salmon Fishing Areas (SFAs)	3
Salmon Season Dates	4
Retention Limits	5
Tag Use	5
Catch and Release	6
Salmon Licence Fees.....	6
Gear Type for Salmon Angling	7
Watershed Management Plans and Closed Areas.....	8
Frequently Asked Questions.....	22

TROUT

Trout Angling Zones.....	24
Trout Season Dates.....	25
Daily Bag/Possession Limits/Size Restrictions	26
Trout Licence Fees	27
Gear Type for Trout Angling.....	28
Special Trout Management Areas	29
Frequently Asked Questions.....	33

OTHER SPECIES (Smelt, Artic Char, Northern Pike and Whitefish)

Other Species Season Dates	34
Daily Bag/Possession Limit/Size Restrictions.....	35
Other Species Licence Fees	36
Gear Type	36

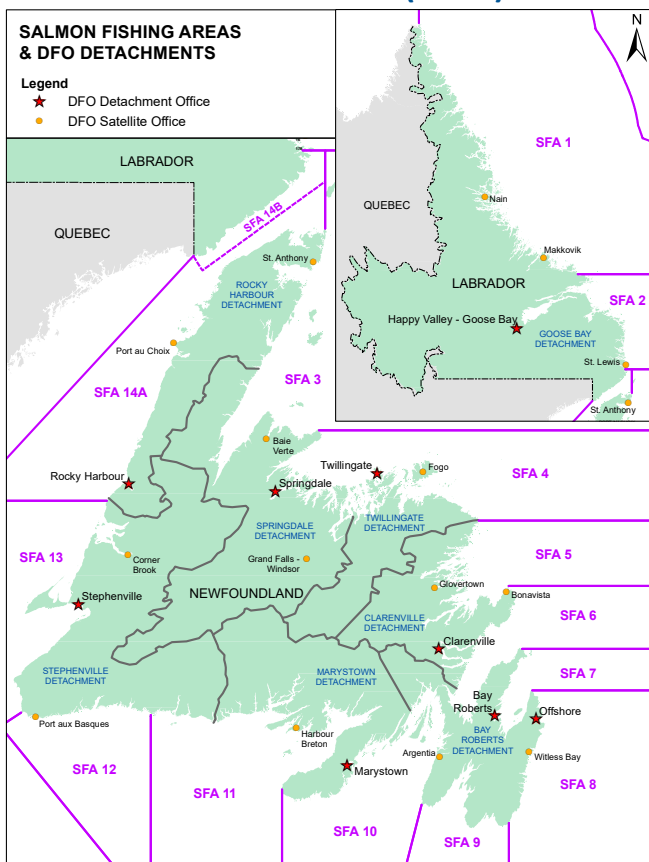
ANNEXES

Annex 1: Key Contacts	37
Annex 2: Licence Information.....	39
Annex 3: Environmental Protocol.....	42
Annex 4: Newfoundland and Labrador Wildlife Regulations - Guide Requirements	44
Annex 5: Program for Anglers with a Disability	47
Annex 6: Coastal Waters and Inland Waters Angling in Non-scheduled Waters/Coastal	49
Annex 7: Rainbow Trout Scheduled and Non-Scheduled Waters and Additional Measures	51
Annex 8: Brown Trout Scheduled and Non-Scheduled Waters and Additional Measures	54
Annex 9: Smelt	58
Annex 10: Salmon Angling Log	60
Annex 11: Returning Scientific Tags.....	63
Additional Resources.....	64

SALMON



SALMON FISHING AREAS (SFAs)



Insular Newfoundland: Salmon Fishing Areas 3 -14A

Labrador: Salmon Fishing Areas 1, 2, & 14B

*This map is a visual guide and not a legal depiction.
Refer to the applicable Regulations and Acts for
interpreting and applying law.*

SALMON SEASON DATES

Angling on scheduled salmon rivers is permitted only between one hour before sunrise and one hour after sunset. Anglers may angle for salmon year-round in Coastal Waters.

Summer Angling

Insular Newfoundland			
SFA	AREA	OPENS	CLOSES
SFA 3 - 8	Cape Bauld to Cape Race	June 1	Sept. 7
SFA 9 - 12	Cape Race to Cape Ray	June 1	Sept. 7
SFA 13	Cape Ray to Cape St. Gregory	June 1	Sept. 7
SFA 14A	Cape St. Gregory to Cape Bauld	June 1	Sept. 7
Labrador			
SFA	AREA	OPENS	CLOSES
SFA 1 - 2	Labrador North and East	June 15	Sept. 15
SFA 14B	L'Anse au Clair to Cape Charles	June 15	Sept. 15

Note: Some individual rivers may have different opening and closing dates. Check the watershed management plans section starting on Page 8 for details. For a complete description of Salmon Fishing Areas, see the map insert included in this guide.

Fall Angling: September 8 – October 7, 2023

Gander River, Exploits River and Humber River

- Catch-and-Release angling as follows:
 - main stem of Lower Exploits River, from Stoney Brook to river mouth;
 - main stem of Lower Humber River, from Boom Siding (outlet of Deer Lake) to lower end of Shellbird Island;
 - main stem of Gander River from outlet on Gander Lake to river mouth.
- Angling not permitted on any tributaries of these rivers.
- Fall Angling retention on the main stem of the lower Gander River will be subject to the in-season review.

RETENTION LIMITS

River Classification	Retention Limit	Tag Color	Tag #
Class 0	0	N/A	N/A
Class 2	One fish	Red	1
Class 4	Two fish	Red/Green	1, 2
Class 6	Two fish	Red/Green	1, 2
Unclassified (SFA 1 and 2)	Two fish	Red/Green	1, 2
Non-scheduled waters	0	N/A	N/A

Anglers may not retain salmon caught in coastal waters at any time.

Retention of salmon is not permitted on non-scheduled waters.

TAG USE

Tags must be immediately and securely locked through the gills and mouth of retained salmon, and the month and day must immediately be clearly cut out and removed from the vinyl portion of the tag.

Any angler who “hooks” a salmon shall immediately affix and lock his or her own tag through the gills and mouth of the salmon and cut out and remove the month and day of capture, unless the salmon is released back into the water. This includes cases where the angler allows another angler to land the salmon (i.e., passing the rod).

CATCH-AND-RELEASE

- Catch-and-release limits are in addition to the retention limits.
- A maximum of three fish per day on Class 2, Class 4, Class 6 and unclassified rivers.
- A maximum of two fish per day on Class 0 rivers.

An angler may catch-and-release salmon where permitted without a valid tag; however, a valid salmon inland fishery licence is required for catch-and-release angling of salmon.

SALMON LICENCE FEES

Licence Fees	Individual	Senior	Family
Salmon			
Resident	\$23.00	\$14.95	\$23.00
Non-resident	\$80.00		\$80.00

- *Licence fees for inland fishing licences do not include the vendor’s processing fee of \$3.00 per licence and applicable HST.*
- *A person may, for a season, apply for, be issued and hold one inland fishery licence to take salmon or one family inland fishery licence to take salmon but shall not apply for, be issued or hold both of these for the same season.*

For additional licencing information and licencing requirements refer to Annex 2.

GEAR TYPE FOR SALMON ANGLING ON SCHEDULED SALMON RIVERS

A single barbless hook must be used when angling on scheduled salmon rivers.

An artificial fly must be used for angling on scheduled salmon waters throughout Newfoundland and Labrador. Only one hook may be used at a time. Regulations describe an artificial fly as a single barbless hook dressed with materials to attract fish. It is not baited, does not have a weight attached to sink it, and does not have a spinner or similar device attached. A barbed hook may be made barbless by cutting or filing off the barb or by pinching the barb flat so that it is in complete contact with the shaft of the hook.

Angle or Angling: fishing, or attempting to fish, with a hook and a line with the line held in the hand, or with a hook, line and rod held in the hand. This includes casting and trolling.

Hooks or Hooked: means to be in possession of a hook and line with the line held in the hand, or a hook, line and rod with the rod held in the hand, when a fish takes the attached bait, lure, or artificial fly.

No person angling in any inland waters may use more than one rod and line at any time.

Jigging, netting or purposely foul-catching sport fish in inland waters is prohibited. Accidentally foul-caught fish must be released. No person shall willfully disturb or molest any fish or spawn.

WATERSHED MANAGEMENT PLANS AND CLOSED AREAS BY SALMON FISHING AREA (SFA)

Individual Watershed Management Plans have been developed to improve angling opportunities and to help meet conservation objectives by taking into consideration the health of individual river stocks. Regulations may affect bag limit, season length, fish length and limit of fish retained.

SFA 1
WATERSHED MANAGEMENT PLANS
SFA 1 : No watershed management plan
CLOSED FOR THE SEASON (SFA 1)
Makkovik Brook (Makkovik, Labrador).
English River: 25 metres above and 25 metres below the counting fence.

SFA 2
WATERSHED MANAGEMENT PLANS
SFA 2 : No watershed management plan
CLOSED FOR THE SEASON (SFA 2)
Southwest Brook, Paradise River: from 25 metres above and below the counting fence.
Sand Hill River: from 25 metres above and 60 metres below the counting fence.
Dykes River (Muddy Bay Brook): 25 metres above and below the counting fence.

SFA 3
WATERSHED MANAGEMENT PLANS
MAIN RIVER (SOP'S ARM)
Classification - Class 4
Main stem of Main River (Sop's Arm).
Additional measures
Catch-and-release only on Sunshine Pool from 150 metres below to 300 metres above falls.
Catch-and-release only on Northwest branch of Main River.
Angling not permitted within 23 metres downstream from any obstacle or leap (falls). This regulation applies to both Sunshine Pool and Wardens Pool.
Closed for the Season: Angling not permitted within 23 metres downstream from any obstacle or leap (falls). This regulation applies to both Sunshine Pool and Wardens Pool. Section of Northwest branch of Main River (Sop's Arm River) 300 metres below to 300 metres above the falls at Wardens Pool.
CLOSED FOR THE SEASON (SFA 3)
No additional closures.

Let's work together and stop illegal fishing activities in our rivers, report it directly to DFO.

1-833-DF0-TIPS (336-8477)

SFA 4	
WATERSHED MANAGEMENT PLANS	
EXPLOITS RIVER	
Classification	
Class 6	Main stem of Lower Exploits River, from Stoney Brook downstream to Exploits Bay.
	September 8 to October 7: fall fishery, catch-and-release only. Fall angling not permitted on tributaries.
Class 4	Lower Exploits River tributaries below Grand Falls, including Stoney Brook, Little Rattling Brook, Great Rattling Brook, Three Brooks, and Greenwoods Brook.
Class 2	Mid-Exploits River and tributaries, from the Grand Falls fishway to Red Indian Lake dam, including Harpoon Brook, Badger Brook, Noel Paul's Brook, Little Red Indian Brook, Tom Joe Brook, West Brook/Sandy Brook and tributaries.
Class 0 (catch-and-release only)	Exploits River Watershed above Red Indian Lake dam, including Victoria River, Mary March Brook, Lloyds River and all other tributary streams flowing into Red Indian Lake.
SPECIAL MANAGEMENT SECTION	
Main stem below Red Indian Lake Dam, 25 metres below fishway, downstream to Abitibi-Bowater steel bridge	May 15–July 15: retention angling only for ouananiche. No retention of ouananiche 25 centimeters or less, or 35 centimeters or greater. No retention of Atlantic salmon.
	July 16–September 7: catch-and-release angling permitted for salmon and ouananiche only.
	Anglers must possess a salmon angling licence. Salmon angling regulations for scheduled rivers apply.

SFA 4	
GANDER RIVER	
Classification	
Class 6	Main stem of the Lower Gander River
Class 4	Northwest Gander River and tributary streams.
Class 2	All other tributaries of the Gander River Watershed, with the exception of the colonized areas*
*Colonized areas Class 0 (catch-and-release only)	All waters above Big Dead Wolf Falls, including Watchers and Caribou Brook on Big Dead Wolf River (tributary of the Southwest Gander), and all waters above Great Gull Falls on Great Gull River (tributary of Northwest Gander).
Closed for the Season: Salmon Brook tributary, from fishway, downstream 245 metres to Lily Pond. Gander River from 30 metres below to 5 metres above where Salmon Brook flows into it at the high water mark.	
RAGGED HARBOUR RIVER and tributary streams	
Classification - Class 2	
Closed for the Season: Ragged Harbour River, from 61 metres below to six metres above dam at Lower Ragged Harbour River Falls.	
CLOSED FOR THE SEASON (SFA 4)	
Burlington River, from 120 metres below to 38 metres above bridge on Highway 413.	
Exploits River, from Stoney Brook up to the Grand Falls dam.	
Exploits River main stem below the Bishops Falls dam: on the south side, from dam down 200 metres to foot of rapids; on the north side, from dam downstream to the hydro-electric generating station tailrace.	

SALMON

Campbellton River, from 25 metres below to 25 metres above bridge on Highway 340.
Gander River, from 30 metres below to 5 metres above where Salmon Brook flows into Gander River high water mark.
Salmon Brook, Gander River tributary, from fishway, downstream 245 metres to Lily pond.
Barry's Brook, Gander River tributary, from Leap Falls to a point 150 metres downstream.
Deadman's Bay River, from 25 metres above first falls to 25 metres downstream from highway bridge.
Rattling Brook, from the power house to the Exploits River/Bay of Exploits.
Rattling Brook section of the river above the power house upstream to Goulding's spillway/intake/diversion fence, together with the section upstream between Goulding's spillway/intake/diversion fence to the new Amy's dam outlet, to be closed until July 8.
Rattling Brook waters above Amy's Dam as marked by DFO closure signs.

SFA 5
WATERSHED MANAGEMENT PLANS
NORTHWEST RIVER, PORT BLANDFORD
Classification - Class 1 (one fish)
River will open to angling on June 15th for a total quota of 100 fish .
Catch-and-release angling not permitted for salmon greater than 30 centimeters and less than 63 centimeters.
No person shall fish 100m above or below the salmon counting fence.
A provincial inland fishery licence and a valid tag are required to angle Northwest River. Anglers are also required to obtain a National Park salmon licence and tag. All salmon must be tagged with both a 'valid' red provincial salmon tag, (with month and day of capture cut out and removed) , and a Parks Canada issued salmon tag.
The National Park salmon licence is free and will be available at the Northwest River Kiosk in the park on June 14th from 9am - 4pm, and during fishing hours beginning on Thursday, June 15th.
Northwest River will follow Fisheries and Oceans Environmental Protocol as outlined in this guide. However, Northwest River may close completely at any time if water levels are deemed too low for salmon passage upstream; and concerns arise related to the long term sustainability of the salmon population.
Pursuant to section 7.1(1) of the National Parks of Canada Fishing Regulations, every person who holds a salmon licence and catches a salmon within Terra Nova National Park of Canada shall immediately present the entire salmon for registration at the designated area in the parking lot near the Trans Canada Highway approximately 500m from the north bank of the Northwest River.
Closed for the season: All portions of Northwest River outside boundaries of Terra Nova National Park. Section of Northwest River known as Jigging Hole, as identified by closure signs.

TERRA NOVA RIVER	
Classification	
Class 2	Unless specified as closed area, Terra Nova River and tributary streams are Class 2. This includes Maccles Brook.
	From July 10-September 7, Starlight Pool and area from top of the Trench to Tobin's Pool.
	Main stem, from a point 200 metres above the old dam site at the outlet from Terra Nova Lake to a point 300 metres below the old dam site.
	Main stem, from a point 300 metres below 8 mile bridge and 200 metres above 8 mile bridge.
Class 0 (catch-and-release only)	Morine's Pool, from a point 25 metres below The Bench to a point 100 metres above The Bench.
	The section of river from a point 25 metres above Island Pool, to a point 25 metres below Briffett's/Second Steady.
	The section of river from a point 25 metres below the upper fishway (identified by DFO signs), downstream to a point 800 metres below the upper fishway.
	Unless specified as Class 2 the entire watershed above a point 200 metres above the DFO signs posted at the old Terra Nova Lake Dam where Terra Nova Lake runs into Terra Nova River.
	All tributaries (including Pitts Brook, Georges Brook, Butts Brook, Russells Brook and Pinsents Brook) above the DFO signs posted 200 metres above the old Terra Nova Lake Dam.

Closed for the season: Terra Nova River, 300 metres below Terra Nova Lake dam (identified by DFO signs) to 25 metres below the upper fishway (identified by DFO signs).

CLOSED FOR THE SEASON (SFA 5)

Section of Northwest River 100m above and below the salmon counting fence.

SFA 6

WATERSHED MANAGEMENT PLANS

SFA 6: No watershed management plan

CLOSED FOR THE SEASON (SFA 6)

Bellevue River, from lower end of the culvert on the TCH downstream to upper side of new bridge on Route 201.

Shoal Harbour River, from mouth of the dam/fishway to 25 metres above the water supply dam, as indicated by the DFO closure signs.

Section of Salmon Cove River 25 metres below the culvert that crosses the Cabot Highway, to 50 metres above the culvert.

SFA 7

WATERSHED MANAGEMENT PLANS

SFA 7 : No watershed management plan

CLOSED FOR THE SEASON (SFA 7)

North River (Conception Bay), from 50 metres above falls down to where Southern Stank Brook enters river.

Goulds Brook, tributary to South River, Conception Bay, from the Retreat Centre up to Makinsons Highway bridge.

The portion of Shearstown River, Conception Bay, 6 metres above the Conception Bay Highway Bridge, downstream 6 metres below the Conception Bay Highway Bridge.

SFA 8
WATERSHED MANAGEMENT PLANS
SFA 8 : No watershed management plan
CLOSED FOR THE SEASON (SFA 8)
Witless Bay River, from the powerhouse to a point 25 metres downstream.

SFA 9
WATERSHED MANAGEMENT PLANS
COLINET RIVER
Classification - Class 2
CLOSED FOR THE SEASON (SFA 9)
Northeast Brook, Trepassey.
Northwest Brook, Trepassey, at Ladder Falls from top of falls to 25 metres downstream.
Branch River, from the Route 100 causeway (Maurice's Meadow) over the river to a point 915 metres upstream.
Portion of Salmonier River known as Metcalfe's Falls to a point 23 metres below the falls.

SFA 10
WATERSHED MANAGEMENT PLANS
SFA 10 : No watershed management plan
CLOSED FOR THE SEASON (SFA 10)
Salmonier River (Lamaline), from 168 metres on west side of upper part of bridge to bait and spinner signs, and 240 metres downstream to ocean on east side of upper part of the bridge.
Northeast River, Placentia, from 30 metres below to 23 metres above fishway.
Cape Rodger River, at top of the falls, as marked by DFO closure signs.
Cape Rodger River, at Corner Pool, as marked by DFO closure signs.

SFA 11
WATERSHED MANAGEMENT PLANS
CONNE RIVER
Classification - Class 2
Open June 21: only if 425 salmon (total small and large) through counting fence by June 20.
If opened June 21, river will close July 5-8 for an in-season review which will determine if angling will resume.
Special Management Sections
Lower section of Conne River from top of Sandy Steady to river mouth limited to retention only.
Retention and catch-and-release angling are permitted on the section of Conne River upstream from Sandy Steady, including tributaries.
Closed for the Season: Conne River, where Bernard's tributary empties into main stem. Downstream within 80 metres of the DFO counting fence wing on the west bank, 120 metres from wing on east bank, and upstream within 100 metres of counting fence trap.
CLOSED FOR THE SEASON (SFA 11)
Jigging Hole, as marked by DFO caution signs on Garnish River.
Little River, Bay d'Espoir, from its mouth to Big Falls.
Garnish River, 23 metres above and below the counting fence.
Grand Bank Brook, from its mouth to the upstream side of the bridge on Marine Drive.

SFA 12
WATERSHED MANAGEMENT PLANS
SFA 12 : No watershed management plan
CLOSED FOR THE SEASON (SFA 12)
Burnt Island River from the Otter Rub to its source.

SFA 13	
WATERSHED MANAGEMENT PLANS	
HUMBER RIVER	
Classification - Class 6	
September 8–October 7: fall fishery, catch-and-release only on the Lower Humber River from Boom Siding to Shellbird Island. Fall angling not permitted on tributaries.	
June 1–July 31: Adies Lake open.	
Class 0 (catch and release only)	South Brook, a tributary of the Humber River.
Closed for the Season: Humber River, from a line between Lundrigan’s Wharf and Wild Cove Point, upstream to Ballam Bridge. Humber River (Deer Lake): tailrace, from the Deer Lake Power Company power house to a point 25 metres west of Hinton Bridge (northwest) on the TCH and 25 metres east of the Hinton Bridge (northeast) on the TCH. North Brook (Deer Lake), a tributary of Humber River. All streams flowing into Adies Lake.	
BAY ST. GEORGE SOUTH RIVERS	
Highland’s River, Crabbe’s River, Middle Barachois River, Robinson’s River, Fischell’s Brook	
Classification - Class 2	
Highland’s River from TCH to river mouth, Crabbe’s River, Robinson’s River, Fischell’s Brook and Middle Barachois River.	
Additional measures	
Salmon 60 centimetres or greater must be released on Robinson’s River, Fischell’s Brook and Middle Barachois River.	
Closed for the Season: Section of Crabbe’s River, including Twelve Mile Pool, upstream to its source. Section of Barachois River, including Mine Pool, upstream to its source. Section of Robinson’s River, including Chatter Pool, upstream to Big Falls at Mile 18. Highlands River, from TCH upstream to river source.	

BAY ST. GEORGE NORTH RIVERS

Flat Bay Brook, Little Barachois Brook, Southwest and Bottom Brooks, Harry's River

Classification - Class 2

Retention angling permitted on Bottom Brook, Southwest Brook and Little Barachois Brook.

June 1: main stem of Harry's River from Home Pool downstream to river mouth, and Flat Bay Brook open to retention angling. Rivers will be a Class 2 and may become a Class 4 subject to in-season review results.

Additional measures

Catch and release angling only on George's Lake and Pinchgut Lake.

Closed for the Season: Section of Flat Bay Brook above the Look Out Brook run, upstream to its source. Section of Little Barachois Brook, including Old Logger School, upstream to its source. Southwest Brook, from Second Logging at Mile 19, upstream to its source. Harry's River system above Home Pool, including Spruce Brook, Little George's, Pinchgut River, Meadows Brook, Stagg Hill Brook and Gull Pond. Any waters within 23 metres upstream or downstream of the counting facility at area known as Gale's Pit.

CLOSED FOR THE SEASON (SFA 13)

Great Codroy River from the mouth of Crooked Brook (Great Codroy River tributary) upstream to falls.

Bullhouse Brook (Great Codroy River tributary) from upper side of bridge at the TCH, upstream to its source.

Cook's Brook.

Corner Brook Stream and tributaries, from the falls at the gorge to the mouth, including all tributaries on this section.

Blanche Brook.

Warm Creek/Brook river system (Stephenville) and tributaries of the main stem including the connecting ponds of Noels Pond, Little Long Pond, and White Sail Pond.

Romaine's Brook, from Main Bridge to the headwaters.

SFA 14A
WATERSHED MANAGEMENT PLANS
SFA 14A : No watershed management plan
CLOSED FOR THE SEASON (SFA 14A)
Trout River.
West River (St. Barbe).
Deer Arm River, Gros Morne National Park, between Ten Mile Pond and Eastern Arm Pond, also known as Deer Arm Pond.
All waters of the Western Brook drainage basin, including Western Brook, Western Brook Pond and Stag Brook.
Lomond Main River, from 23 metres below fish ladder entrance, up to outlet from Bonne Bay Big Pond.
Kate's Feeder, from River of Ponds Lake to its source.
Big Feeder Brook, from River of Ponds Lake to its source.
Bound Brook, Belburns.
Little Brook Ponds watershed: Goose Nest Brook and main stream, from its outflow from Little Brook Pond down to salt water.
East River (Hawke's Bay), from 25 meters below bridge on Highway 430, upstream to 25 metres above falls.
Manual's Feeder and Rose's Feeder (tributaries to St. Genevieve River).
Parker's River (West Brook, Pistolet Bay), from highway bridge on route 430 downstream to river mouth, as posted by signs.
Torrent River, that portion of the river from the lower end (entrance) of the fishway, downstream to 20 metres below Clifty Falls.

SFA 14B
WATERSHED MANAGEMENT PLANS
SFA 14B : No watershed management plan
CLOSED FOR THE SEASON (SFA 14B)
No closed areas for SFA 14B.

SET YOUNG SALMON FREE

*Note the **Points of Difference** between young salmon & trout*

SALMON PARR

Similar markings to a brook trout. **Points of Difference:** Black spots on sides and back with red spots between parr marks. No markings on tail or fins. Distinctive forked tail.



SALMON SMOLT

A silvery fish with only a shadow of the vertical side or lacking parr marks of the salmon parr or brook trout. **Points of Difference:** Black spots on upper sides and cheeks with no markings on the forked tail or fins.



BROOK (SPECKLED) TROUT

This fish has sides with light colored red spots, and a marbled pattern on the upper sides and back. **Points of Difference:** Tail fin is square or nearly so. Dorsal fin has dark wavy lines or patches. Lower fins with pure white leading edges. No black spots on the body.



BROWN TROUT

Points of Difference: Top fins are mostly red, there are several red and black spots on the sides and the tail fin is square or slightly curved.



Be a good sport!

If you catch a salmon parr or smolt, remove the hook gently and place it back in the water to grow up!

To report illegal fishing activity contact the nearest DFO Detachment office or phone CRIMESTOPPERS anonymously at 1-800-222-TIPS

FREQUENTLY ASKED QUESTIONS

Can I retain salmon alive?

Salmon may not be retained alive.

Can I filet my salmon on the river?

Salmon taken by angling may not be headed, filleted, canned or otherwise dealt with so as to make it impossible to readily determine the species, length, weight and number of the fish.

Can I sell my catch?

No person shall buy, sell, trade, barter or offer to buy, sell, trade or barter any fish unless it was caught and retained under the authority of a licence issued for the purpose of commercial fishing.

What do I do if I lose my salmon licence and/or tags?

Keep your licence return, record the date of purchase and the vendor's name and address. If you lose your salmon licence and/or tags replacement licences/tags are available from the vendor (at no cost) where you purchased your original licence. An affidavit form, available from the vendor or the Wildlife Division, must be completed and signed by a Justice of the Peace, Commissioner for Oaths or Notary Public. The completed/signed affidavit must be presented to the vendor in order to be issued a replacement licence.

What are the restrictions around fishways and canals?

Angling is not permitted within 23 metres downstream from the lower entrance of any fishway, canal, obstacle or leap (falls). No person shall obstruct the passage of fish through a fishway or canal.

Can I retain spent salmon?


Anglers may not retain spent salmon, commonly called "slinks".

Are there any size restrictions?


On scheduled and non-scheduled waters, anglers must return to the water from which it was taken in a manner which causes the least harm, salmon fry, parr and smolt, or salmon less than 30 centimetres (12 inches), or ouananiche and rainbow trout less than 20 centimetres (8 inches).

Anglers fishing in inland waters in Newfoundland and Labrador are not permitted to catch and retain any salmon where the salmon measures greater than 63 centimetres in length. (Except for Robinson’s River, Fischell’s Brook and Middle Barachois River. See Bay St. George South Rivers p. 18)


Atlantic Salmon



Name: Atlantic salmon (<i>Salmo salar</i>)	Local Names: Alpêr chat, sea chat, Arctic salmon	SARA Status: Not listed	Size: Adult salmon can measure up to 150cm and weigh up to 39 kg	Diet: Juveniles start with tiny invertebrates (e.g. blackflies, mayflies). Adults feed on arctic squid, sand eels and amphipods.
Where you might see it: Are seen throughout rivers in all parts of Newfoundland and southern half of Labrador in freshwater and along entire coast of NL in the marine environment			Threats: Low marine survival	
Notes: Very tremendously in colour depending on the time of the year, location and stage of development. The Atlantic salmon, 'the silver leaper', has been called the king of fish, due primarily to their spectacular ability to clear seemingly insurmountable obstacles.			Habitat: Atlantic salmon are distributed throughout the North Atlantic region of the northern hemisphere, they can travel between freshwater and the marine environment can but spawn only in freshwater.	

Canada

Newfoundland and Labrador

Fisheries and Oceans
Canada

Pêches et Océans
Canada

TROUT

INCLUDES SPECKLED (BROOK) TROUT, BROWN TROUT, RAINBOW TROUT, OUANANICHE



TROUT ANGLING ZONES

Insular Newfoundland

Zone 1: Insular Newfoundland

Labrador

Zone 2: Labrador, Strait of Belle Isle area

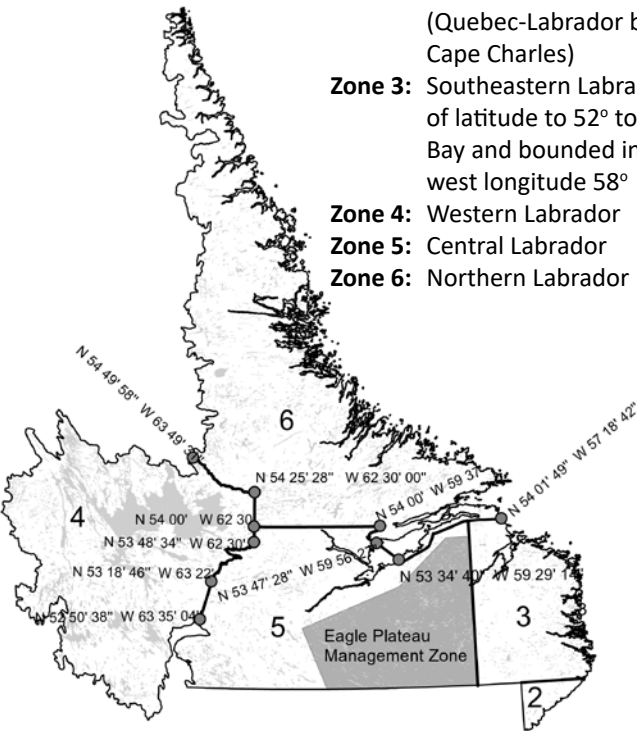
(Quebec-Labrador border to Cape Charles)

Zone 3: Southeastern Labrador, north of latitude to 52° to Groswater Bay and bounded inland by west longitude 58°

Zone 4: Western Labrador

Zone 5: Central Labrador

Zone 6: Northern Labrador



TROUT SEASON DATES

TROUT NON-SCHEDULED WATERS

Zone 1	February 1 to April 15 May 15 to September 7
Zone 2	March 1 to September 7
Zone 3	February 1 to September 15
Zone 4	February 1 to September 7
Zone 5	February 1 to September 15
Zone 6	February 1 to September 15

RAINBOW TROUT SCHEDULED WATERS

See Annex 7 for List of Scheduled waters and additional measures	June 1 to October 7
--	---------------------

RAINBOW TROUT NON-SCHEDULED WATERS

See Annex 7 for List of Non- Scheduled waters	February 1 to April 15 May 15 to September 7
---	---

BROWN TROUT SCHEDULED WATERS

See Annex 8 for List of Scheduled waters and additional measures	September 8 to October 7
--	--------------------------

BROWN TROUT NON-SCHEDULED WATERS

See Annex 8 for List of Non-Scheduled waters and additional measures	February 1 to October 7
--	-------------------------

Anglers may angle for Trout year round in coastal waters.

DAILY BAG/POSSESSION LIMIT/ SIZE RESTRICTIONS

Insular Newfoundland		
TROUT	DAILY BAG LIMIT/SIZE RESTRICTIONS	POSSESSION LIMIT
Trout – Includes speckled trout, brown trout, rainbow trout and ouananiche	12 fish which can be a combination of any of the species (speckled, brown, rainbow, ouananiche) or 2.25 kg round weight + 1 fish of any of those species, whichever is reached first. No rainbow or ouananiche less than 20 centimetres (8 inches) can be retained.	24 fish or 4.5kg plus 1 fish

Labrador		
TROUT	DAILY BAG LIMIT/SIZE RESTRICTIONS	POSSESSION LIMIT
Trout – Includes speckled trout and ouananiche	12 fish which can be a combination of any of the species (speckled or ouananiche) or 2.25 kg round weight + 1 fish of any of those species, whichever is reached first. No ouananiche less than 20 centimetres (8 inches) can be retained.	24 fish or 4.5kg plus 1 fish
Lake trout (Zone 2)	2 fish	4 fish
Lake trout (Zones 3-6)	3 fish	3 fish

TROUT LICENCE FEES

Licence Fees	Individual	Senior	Family
Trout			
Resident	N/A	N/A	N/A
Non-resident	\$12.00		\$12.00

Refer to Annex 2 for additional licence information.

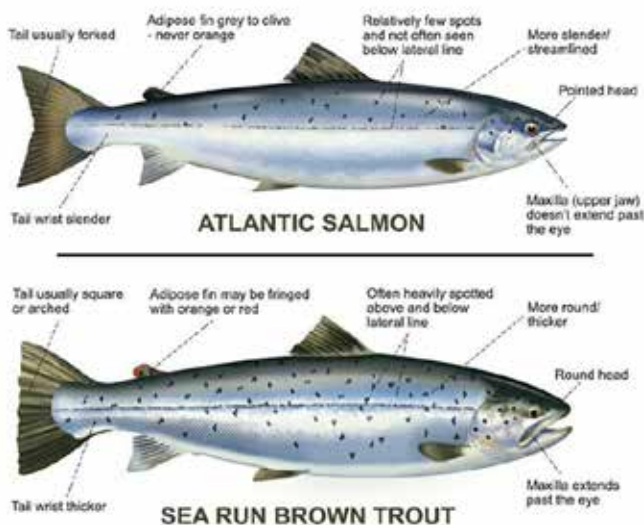
Note: *Licence fees for inland fishing licences do not include the vendor's processing fee of \$3.00 per licence and applicable HST.*

A Parks Canada fishing permit is required to catch and retain trout in a national park. Anglers should check with park staff for daily bag/possession limit/size restrictions.

A trout licence is not required when angling for trout in coastal waters.

BROWN TROUT VS. SALMON PARR:

Can you spot the differences? You can catch trout during winter angling, but it's illegal to catch and retain salmon.



GEAR TYPE FOR TROUT ANGLING

Hook and Line

Line and Rod

A single barbless hook must be used when angling on scheduled salmon rivers.

Angle or Angling: fishing, or attempting to fish, with a hook and a line with the line held in the hand, or with a hook, line and rod held in the hand. This includes casting and trolling.

Hooks or Hooked: means to be in possession of a hook and line with the line held in the hand, or a hook, line and rod with the rod held in the hand, when a fish takes the attached bait, lure, or artificial fly.

Jigging, netting or purposely foul-catching sport fish in inland waters is prohibited. Accidentally foul-caught fish must be released. No person shall willfully disturb or molest any fish or spawn.

Winter Trout Angling

These conditions apply to winter angling for ALL species of trout:

- Maximum of three separate lines each equipped with one hook per method while angling through the ice.
- All three lines must be closely and constantly attended to by the angler.
- Where open water is available during the winter angling season, anglers may angle with rod and line from shore or boat.

SPECIAL TROUT MANAGEMENT AREAS

Season dates, bag limits, possession limits and length limits may vary in special trout management areas. Unless otherwise specified, the daily bag limit for special management areas of insular Newfoundland is six trout or 0.9 kgs + one trout, whichever limit is reached first. The possession limit is the daily bag limit.

MIDDLE BROOK WATERSHED and INDIAN BAY – BONAVIDA NORTH (INCLUDING TRIBUTARY STREAMS AND CONNECTING PONDS)

Summer Season	Labour Day	Winter Season
May 15 - August 8, 2023	September 1 - September 4, 2023	February 1 - April 1, 2024

Indian Bay – Bonavista North Watershed Special Trout Management Area. Effective 2019, the Indian Bay Special Trout Management Area will be extended to the following area: Anchor Brook in the north along the coast line to Trinity Brook then west for 23 kilometers to the east side of Home Pond, then NW 17 kilometers to a point approx. 5 kilometers NW of Indian Bay Pond then NE 57 kilometers to the outflow of Anchor Brook. Any ponds enclosed by these boundaries are considered part of the zone. See map below for further detail.

Middle Brook watershed ponds include: Rodney Pond, Butt's Pond, Square Pond, Pussels Pond, First Burnt Pond, Black Duck Pond and Second Duck Pond.



SOUTHWEST POND, OTTER POND, AND COAKER'S

STEADY: Effective 2019, Southwest Pond, Otter Pond and Coaker's Steady are part of the Indian Bay Special Trout Management Area. Details on bag limits are on page 29.

Summer Season	Winter Season
June 1–September 7, 2023	No winter angling.
Scientific analyses have shown that the “mystery fish of Bonavista Bay,” prevalent in Southwest Pond, are Atlantic salmon. If you are found in possession of those or any other untagged Atlantic salmon, enforcement action will be taken.	

STAR LAKE

Summer Season	Winter Season
July 1–July 31, 2023	February 1–April 1, 2024

ADIES LAKE

Summer Season	Winter Season
June 1–July 31, 2023	February 1–April 15, 2024

**10 MILE LAKE AND ROUND LAKE
(NORTHERN PENINSULA)**

Summer Season	Winter Season
June 1–September 7, 2023	No winter angling.
Daily bag limit is two trout, the weight (or combined weight) of any fish retained cannot exceed 2.25 kg. Trout greater than 58 centimetres must be released.	
Special trout management area includes: 10 Mile Lake and Round Lake (Northern Peninsula) and all tributaries flowing in and out of 10 Mile Lake and Round Lake and the St. Genevieve River system.	

JONATHAN'S BROOK WATERSHED

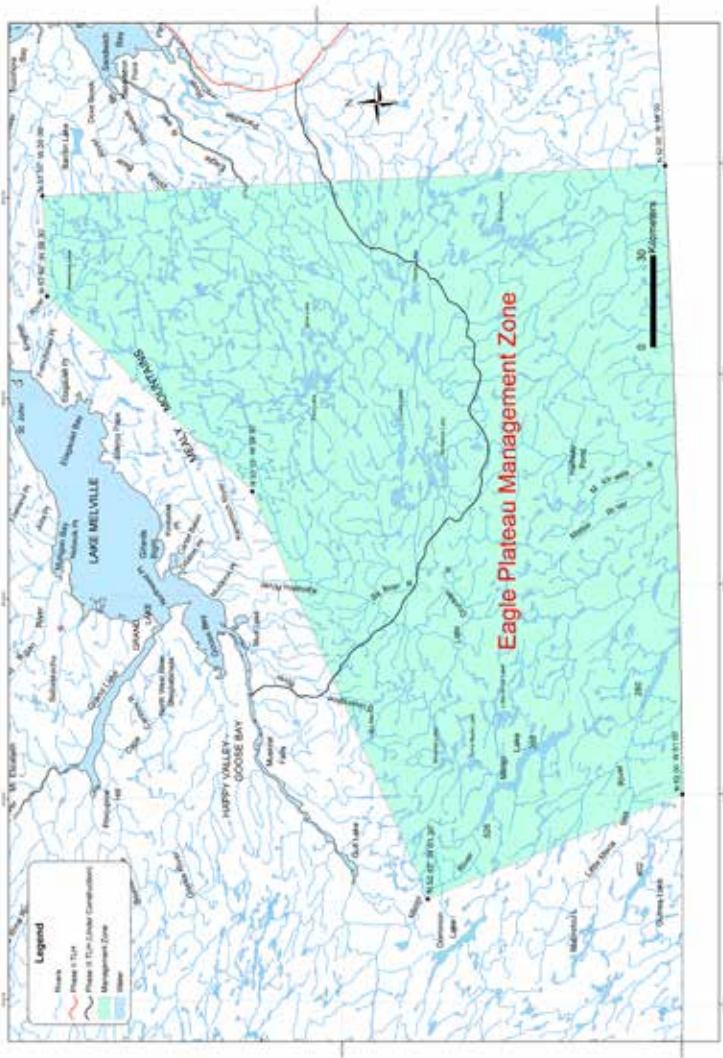
Season Dates	Minimum Size	Bag/ Possession Limit
Angling dates: consistent with the trout angling dates in non-scheduled waters for insular Newfoundland and the salmon angling dates for the scheduled waters of this watershed.	Speckled (brook) trout less than 23 centimetres must be released.	Trout daily bag limit and possession limit are consistent with those of insular Newfoundland - (See Page 26 - Daily Bag limit.)
Special trout management area includes: Whitman's Pond, Jonathan's Park Pond, Big Jonathan's Pond, Lower Jonathan's Pond and all the waters running in and out of these ponds.		

CHURCHILL RIVER DRAINAGE BASIN WATERSHED (LABRADOR)

Season	Minimum Size	
Refer to Zone Season Dates page 25	A minimum size limit of 60 centimetres for lake trout.	
Churchill River Drainage Basin Watershed is defined as:		
West Forebay	Winokapau Lake	Smallwood Reservoir
Sandgirt Lake	Lobstick Lake	Ossokmanuan Reservoir
Atikonak Lake	Ashuanipi Lake	Gabbro Lake
Sims Lake	Lake Joseph	Shabogamo Lake

EAGLE PLATEAU MANAGEMENT ZONE (LABRADOR)

Season	Bag Limit
February 1– September 15, 2023	Bag limit for brook trout is 6 fish or 1.13 kg + 1 fish, whichever is reached first. The possession limit is equal to the daily bag limit. See the map below.



FREQUENTLY ASKED QUESTIONS

Can I angle for trout on the last day of the season (i.e. Trout closes pm September 7, can I fish on September 7?)

You can angle for trout on the last day of the season until midnight.

Do trout angling regulations such as daily bag limits and possession limits apply when angling in coastal waters?

Yes, these angling regulations apply.

Can I retain trout alive?

Trout may not be retained alive.

Can I filet my trout on the river?

Trout taken by angling may not be headed, filleted, canned or otherwise dealt with so as to make it impossible to readily determine the species, length, weight and number of the fish.

Can I sell my catch?

No person shall buy, sell, trade, barter or offer to buy, sell, trade or barter any fish unless it was caught and retained under the authority of a licence issued for the purpose of commercial fishing.

What are the restrictions around fishways and canals?

Angling is not permitted within 23 metres downstream from the lower entrance of any fishway, canal, obstacle or leap (falls). No person shall obstruct the passage of fish through a fishway or canal.

OTHER SPECIES

SMELT, ARTIC CHAR, NORTHERN PIKE AND WHITEFISH

OTHER SPECIES SEASON DATES

Smelt:

Smelt angling dates are consistent with trout angling dates in non-scheduled inland waters (See “Season Dates” on Page 25), with the exception of the list of ponds, which open January 15. See Annex 9. Only smelt may be retained when these ponds are closed to trout angling from January 15 - January 31.

Smelt angling in coastal waters is permitted throughout the year.

Artic Char:

Zone 1: May 15 - September 7
February 1 - April 15
Zone 2: March 1 - September 7
Zones 3-6: February 1 - September 15

Northern Pike

Zones 3-6: February 1 - September 15

Whitefish:

Zones 3-6: February 1 - September 15

DAILY BAG/POSSESSION LIMIT

Insular Newfoundland

OTHER SPECIES	DAILY BAG LIMIT	POSSESSION LIMIT
Smelt	No limit.	No limit.
Arctic char	12 Arctic char, or 2.25 kg round weight + 1 fish of that species, whichever limit is reached first.	24 fish or 4.5kg plus 1 fish

Labrador

Smelt	No limit	No limit
Arctic char	Two fish	Four fish
Northern pike	Two fish	Four fish
Whitefish	No limit	No limit



Law Enforcement Torch Run for Special Olympics Newfoundland and Labrador

To find out how you can get involved or contribute, please contact any of the Enforcement Departments or agencies below in your local area:

Royal Canadian Mounted Police
Corrections and Community Services
Royal Newfoundland Constabulary
MUN Campus Enforcement and Patrol
Sheriff's Department

Fisheries and Oceans Canada
Resource Enforcement Division
Canadian Border Services Agency
Newfoundland Liquor Corporation
Municipal Enforcement

For additional information please contact:
Lynette Wells • Phone: 687-4390 • Email: lwells130@live.ca

Special Olympics
Newfoundland and Labrador



OTHER SPECIES LICENCE FEES

Licence Fees	Individual	Senior	Family
Trout			
Resident	N/A	N/A	N/A
Non-resident	\$12.00		\$12.00

Note:

- *Licence fees for inland fishing licences do not include the vendor’s processing fee of \$3.00 per licence and applicable HST.*

A Parks Canada fishing permit is required to catch and retain trout in a national park. Anglers should check with park staff for daily bag/possession limit/size restrictions.

GEAR TYPE FOR TROUT ANGLING

A single barbless hook must be used when angling on scheduled salmon rivers. Gear type for non-scheduled waters is subject to the same gear and gear limits as trout angling. Refer to page 28.

Follow us on Twitter
@DFO_NL #NLtrout

ANNEX 1

KEY CONTACTS

Fisheries and Oceans Canada

Conservation & Protection Detachments

For information on season dates, bag limits, closed areas and regulations

Bay Roberts (709) 786-3960

Springdale (709) 673-5250

Marystown (709) 279-7863

Stephenville (709) 643-8000

Clareville (709) 466-8272

Rocky Harbour (709) 458-3082

Twillingate (709) 884-2411

Happy Valley-Goose Bay (709) 896-6150

For information on river closures: (709) 772-2045

Provincial Department of Fisheries, Forestry and Agriculture

For information on trout and salmon licences and guide requirements or guide licences:

Wildlife Division (709) 637-2025

Resource Enforcement Division

Headquarters (709) 637-2971

Western Regional Office (709) 637-2971

Eastern Regional Office (709) 729-2192

Labrador Regional Office (709) 896-7973

www.Stoppoaching.ca

Let's work together and stop illegal fishing activities in our rivers, report it directly to DFO.

1-833-DF0-TIPS (336-8477)

Provincial Department of Fisheries, Forestry and Agriculture

Provincial Government Services Centres

For information on obtaining resident and non-resident licences or for licence inquiries:

Mount Pearl (709) 729-3699

Grand Falls-Windsor (709) 292-4206

Harbour Grace (709) 945-3107

Corner Brook (709) 637-2556

Clareville (709) 466-4068

Happy Valley-Goose Bay (709) 896-5428

Marystown (709) 279-0837

Labrador City (709) 944-5282

Gander (709) 256-1420

Parks Canada

For licencing information that apply to National Parks:

Terra Nova National Park (709) 533-2801

Gros Morne National Park (709) 458-2417

Torngat Mountains National Park (709) 922-1290

Transport Canada

For Safe Boating Information contact Transport Canada, Office of Boating Safety at 1-800-230-3693, obs-atl-bsn@tc.gc.ca, or <http://canada.ca/boating-safety>

ANNEX 2

LICENCE INFORMATION

Inland fishery licences are issued by the Department of Fisheries, Forestry and Agriculture, Resource Enforcement Division. Licences may be obtained from commercial vendors, such as sporting good shops, service stations, and other areas throughout the province, or from the Provincial Government Service Centres.

A resident can only angle in scheduled inland waters of the province with a valid inland fishery licence to take salmon. A resident who is the holder of an inland fishery licence for salmon can retain salmon and trout on their licence while angling in scheduled inland waters.

A resident of the province does not require an inland fishery licence to angle for trout.

A licence is not required when angling for salmon and trout in coastal waters.

Licence holders must carry their inland fishery licences (salmon or trout) at all times while angling.

There is no age restriction on possessing an inland fishing licence. However, a child up to and including 17 years of age cannot be part of an inland fishery family licence if he/she holds an individual inland fishery licence.

Children under 14 years of age shall not angle on any scheduled river unless accompanied by a person 17 years of age or older. The person 17 years of age or older does not require a license to accompany the angler, but may not fish without a license.

No person shall apply for, be issued, or hold more than one inland fishery license to angle for salmon or trout.

Non-Residents

(Please see Guide Requirements in Annex 4)

A non-resident shall not angle for trout in non-scheduled inland waters of the province without an inland fishery licence to take trout.

A non-resident can only angle in scheduled inland waters of the province with a valid inland fishery licence to take salmon.

A non-resident angling in scheduled inland waters with a valid salmon inland fishery licence shall not retain trout without possessing a valid non-resident inland fishery licence to take trout.

The trout bag limit for a family licence and an individual licence is the same. All fish caught shall be counted as the catch of the person to whom the licence is issued.

Family Licences

Family means a parent or parents and their children including adopted and foster children, and children for whom parents are guardians, a grandparent or grandparents and their grandchildren, and a person and his or her spouse or cohabiting partner, but does not include an individual person.

Inland fishery licences for salmon and trout are available as individual and/or family licences. However, no person shall apply for, be issued, or hold more than one inland fishery licence to angle for salmon or trout.

A family inland fishery licence (salmon or trout) may be issued to a parent, grandparent or guardian of a family and may include any child up to and including 17 years of age. However, a child up to and including 17 years of age cannot be part of an inland fishery family licence if he/she holds an individual inland fishery licence.

With the exception of the parent, grandparent or guardian, any person 18 years of age or older cannot participate in a family inland fishery licence.

Persons 17 years of age or under, angling on a family inland fishery licence (salmon or trout), must be accompanied and supervised by the parent, grandparent or guardian who is the holder of the inland fishery licence. The parent, grandparent or guardian must always carry the inland fishery licence while angling.

Parents, grandparents or guardians named on a family inland fishery licence (salmon or trout) may angle at the same time as the holder of the licence, with or without being accompanied by children.

Bag limit for a family licence and an individual licence is the same. All fish caught shall be counted as the catch of the person to whom the licence is issued.

ANNEX 3

ENVIRONMENTAL PROTOCOL FOR THE ATLANTIC SALMON RECREATIONAL FISHERY IN NEWFOUNDLAND AND LABRADOR

The protocol is for in-season conservation measures consists of management actions that modify angling activities on rivers in Newfoundland and Labrador based on a water temperature trigger and supporting secondary parameters.

The management actions are as follows:

- When the water temperature in a river exceeds 20.0 degrees Celsius ($>20.0^{\circ}\text{C}$) over two to three days, the department will consider closing the river to angling from 10:01 a.m. each day to one hour before sunrise the following day, until conditions improve. Therefore, the river would be opened daily from one hour before sunrise to 10:00 a.m. when water temperatures are typically at their coldest. Secondary parameters such as water levels and weather forecast will also be considered.
- The river could re-open when the water temperatures fall to 20 degrees Celsius or below ($\leq 20.0^{\circ}\text{C}$). Secondary parameters such as water levels and weather forecast will also be considered.

Following a precautionary approach, an additional management action will be applied to rivers that are open for catch and release only angling (Class 0 rivers) as follows:

- When the water temperature in a Class 0 river exceeds 18.0 degrees Celsius ($>18.0^{\circ}\text{C}$) over two to three days, the department will consider closing the river to angling from 10:01 a.m. each day to one hour before sunrise the following day, until conditions

improve. Therefore, the river would be opened daily from one hour before sunrise to 10:00 a.m. when water temperatures are typically at their coldest. Secondary parameters such as water levels and weather forecast will also be considered.

- The Class 0 river could re-open when the water temperatures decrease to 18.0 degrees Celsius or below ($\leq 18.0^{\circ}\text{C}$). Secondary parameters such as water levels and weather forecast will also be considered.

Management actions will be published in Notice to Anglers and on the Newfoundland and Labrador DFO webpage online at <https://www.nfl.dfo-mpo.gc.ca/en/Fisheries%20Notices%202023>

CHECK OUT OUR ONLINE RIVER STATUS REPORT

It is updated in real-time and shows which scheduled salmon rivers are opened or closed.



**In-Season River
Status Report**

<https://www.nfl.dfo-mpo.gc.ca/nfl-tnl/en/isrs>

ANNEX 4

NEWFOUNDLAND AND LABRADOR WILDLIFE REGULATIONS - GUIDE REQUIREMENTS

For these regulations, the following definitions apply:

Resident: Any Canadian citizen residing in the province six consecutive months or more, or any person residing in the province 12 consecutive months or more, or a member of the RCMP or Canadian Armed Forces stationed in the province (no minimum time), or a member of the RCMP or Canadian Armed Forces who was born in the province, but is stationed elsewhere and is visiting the province.

Direct Relative: Father, mother, grandparent, sister, brother, son, daughter, grandchild or in-law, who is a resident of the province.

Provincial Highway: A public highway maintained by the Department of Works, Services and Transportation designated by a route number.

Co-operative Camp: Any VIP camp, military camp or non-commercial private club in existence since May 18, 1990 and used for the purpose of sport fishing and hunting.

Outfitter: The owner or operator of a camp site, lodge, cabin and/or related facilities licenced under the Tourist Establishment Regulations (1994) and constructed and used solely as a base for outfitting operations for sport fishing and/or hunting and related activities.

1. Island of Newfoundland; South of 52°N Labrador

- A non-resident shall not angle on scheduled salmon waters unless accompanied by a licenced guide or by a direct relative who is a resident.
- A non-resident may angle unaccompanied on non-scheduled waters within 800 metres of a provincial highway; beyond that point an angler must be accompanied by a licenced guide or direct relative who is a resident.

2. North of 52°N Labrador

- A non-resident shall not angle for any species of fish in any inland waters without engaging the services of an outfitter except that :
 - (a) a non-resident who is the guest of a co-operative camp may angle in the waters adjacent to those camps if accompanied by a licensed guide;
 - (b) a non-resident who is accompanied by a direct relative who is a resident may angle in any inland water north of 52° north latitude; and
 - (c) in waters set out in Schedule I of the Newfoundland and Labrador Fishery Regulations (Canada), a non-resident licensed to fish for salmon may fish within 800 metres upstream and 800 metres downstream to a bridge on a provincial highway if accompanied by a licensed guide.
- A non-resident may angle in any inland water within 800 metres of a provincial highway, other than waters set out in Schedule I of the Newfoundland and Labrador Fishery Regulations (Canada), without using the services of an outfitter or without being accompanied by a licensed guide or a direct relative.
- A non-resident who is a paying guest of a commercial tourist establishment licensed under the Tourist Establishment Regulations enacted under the Tourist Establishments Act may angle for fish in inland waters beyond 800 meters of a provincial highway provided that he or she:

- (a) returns to that tourist establishment each night;
 - (b) utilizes the services of a licensed guide; and
 - (c) does not fish within 2 kilometres, or a distance which the minister may establish, of an existing licensed outfitter camp site, lodge, cabin and related facilities.
- A non-resident who is a guest of a resident of the province at a cottage located in Labrador may angle for fish in inland waters provided that he or she
 - (a) fishes in waters adjacent to that cottage;
 - (b) is accompanied by a licensed guide; and
 - (c) a fee is not charged and remuneration is not paid for the guide service or for lodging, accommodations or meals at that cottage.
- *Note:** A licensed guide, while employed as a licensed guide, shall not angle for salmon or trout in inland waters but a licensed guide may, within reasonable limits, demonstrate the techniques of line casting and hooking of fish to an angler by whom he or she is accompanied. A licensed guide who hooks a fish while demonstrating the techniques of line casting to the angler by whom he or she is accompanied shall release the fish back into the water.

ANNEX 5

NEWFOUNDLAND AND LABRADOR WILDLIFE REGULATIONS - PROGRAM FOR ANGLERS WITH A DISABILITY

“Angler with a disability” means a person who holds a valid inland fishery licence, a river specific inland fishery licence or a valid family inland fishery licence issued by the Minister and has a disability affecting angling activities.

“Disability affecting angling activities” means a permanent impairment or other permanent medical condition which, in the opinion of a health care provider, restricts a person’s ability to perform the activities of angling, including accessing a place from which to angle, retaining and releasing fish.

An angler with a disability may specify one designated angler to angle and retain the species set out in licence of the angler with a disability, in the area permitted and within the bag limits set by law.

“Designated angler” means a person who holds a valid inland fishery licence, river specific inland fishery licence or a valid family inland fishery licence and is specified by an angler with a disability to angle and retain a species of fish that the angler with a disability is permitted by law to catch and retain, but does not include a person who is prohibited by the court from holding an inland fishery licence.

A designated angler shall:

- (a) keep within 100 metres of the angler with a disability, except when in pursuit of a fish that has been hooked for the angler with a disability;
- (b) possess the licence and tags of the angler with a disability at all times while angling for that angler with a disability; and
- (c) immediately affix and lock a tag to a salmon caught for the angler with a disability in the manner described in the Wild Life Regulations (i.e. affix the tag through the gills and mouth of the salmon so that it cannot be removed and by cutting out the month and day of retention).

Where a designated angler retains and tags a salmon, the angler with a disability shall immediately take possession of and retain the salmon.

To become eligible, persons must first complete an application form for the Program for Hunters and Anglers with a Disability. For more information, please contact the Department of Fisheries Forestry and Agriculture, Resource Enforcement Division by telephone at (709)637-2025 or

email: wildlifelicense@gov.nl.ca

Web link: <https://www.gov.nl.ca/ffa/public-education/wildlife/hunting/disabilities/>

ANNEX 6

COASTAL WATERS AND INLAND WATERS

Newfoundland and Labrador waters are divided into categories and sub-categories, as follows: Coastal waters and Inland waters (scheduled salmon rivers, scheduled rainbow and brown trout waters and non-scheduled inland waters).

Coastal waters: Marine waters outside the spring tide low-water mark, except where DFO has caution signs on the shore of a river's estuary to close the estuary to commercial fisheries. These signs are located several metres to several kilometres seaward from the mouth of a river. Seaward of the signs is coastal waters; the area inside the signs is non-scheduled inland waters, even though it is a marine/salt water area.

Anglers uncertain about where caution signs are placed at the mouth of the river, should contact the nearest DFO office listed in Annex 1.

Inland waters: All waters above spring tide low-water mark and all waters inside of a line drawn between caution signs set out from the mouth of a river on the shores of its estuary. Inland waters include scheduled salmon rivers, scheduled rainbow trout waters, and non-scheduled inland waters.

Scheduled salmon river: Includes the main stem of a river including tidal waters at the mouth of a river inside DFO bait and spinner signs; the waters of any connected pond or lake within 90 metres of the river's entrance and outlet, or as indicated by DFO signs; in many cases, tributary streams; in a few cases, certain lakes and ponds. A complete list of scheduled rivers is contained in the map insert in this guide.

Scheduled rainbow trout waters: Includes a group of ponds and connecting streams in the Bauline, Portugal Cove, Torbay and Green's Harbour areas, which are listed in Annex 7.

Scheduled and non-scheduled brown trout waters: As described in Annex 8.

Non-scheduled inland waters: Inland waters not individually listed by name in the regulations; they include salt water areas inside of DFO caution signs.

ANNEX 7

RAINBOW TROUT SCHEDULED AND NON-SCHEDULED WATERS AND ADDITIONAL MEASURES

Rainbow trout waters include a group of ponds and connecting streams in the Bauline, Portugal Cove, Torbay and Green's Harbour areas. Season dates vary for scheduled and unscheduled rainbow trout waters as outlined.

Please note that in Bay d'Espoir the following rivers: Hughes Brook, First Brook, Salmon River (East Bay), Northwest Brook, Southeast Brook and Little River are open year-round to rainbow trout and daily bag limit does not apply.

SCHEDULED RAINBOW TROUT WATERS	
BAULINE	Baird's Pond and tributary streams.
	Freshwater (Motion) Pond and tributary streams.
	Ocean (Long) Pond and tributary streams.
	Brock's Head Pond and tributary streams.
	Funnel Pond and tributary streams.

SCHEDULED RAINBOW TROUT WATERS	
PORTUGAL COVE	Beachy Cove Pond and tributary streams.
	Clement's Pond and tributary streams.
	Hugh's Pond and tributary streams.
	Northeast Pond and tributary streams.
	Blast Hole Pond and tributary streams.
	Hogan's Pond and tributary streams.
	Mitchell's Pond and tributary streams.
	Oliver's Pond and tributary streams.
	Picco's Pond South (Neary's) and tributary streams.
	Western Round Pond and tributary streams.
TORBAY AREA/ MIDDLE COVE AREA	Gallows Cove Pond and tributary streams.
	Little Gallows Cove Pond and tributary streams.
GREEN'S HARBOUR AREA	Unnamed stream flowing between Scotch Pond and Green's Harbour.
	Scotch Pond and tributary streams.
	Coopers Pond, excluding stream from Black Duck Pond to Coopers Pond, and tributary streams.
	Cross Pond and tributary streams.
	Little Coopers Pond and tributary streams.

SEASON DATES FOR SCHEDULED WATERS	ADDITIONAL MEASURES
June 1– September 7, 2023	All species of trout may be retained in scheduled rainbow trout waters, Shoal Harbour River and Lower Shoal Harbour River as part of the daily bag limit.
September 8–October 7, 2023	Rainbow trout may be retained in scheduled rainbow trout waters. Shoal Harbour River: coastal water to a point 25 metres below dam.

SEASON DATES	NON-SCHEDULED RAINBOW TROUT WATERS	
Summer fishery: May 15 - September 7, 2023 Winter fishery: February 1 - April 15, 2024	BAULINE	Bauline Rocky Pond.
		Three Corner Pond.
		Middle Three Island Pond.
		Great Pond.
		Three Island Pond.
		Goose Pond.
		Middle Pond.
		Axes Pond.
		Northwest Pond.
	TORBAY AREA/ MIDDLE COVE AREA	Jones Pond.

ANNEX 8

BROWN TROUT SCHEDULED AND NON-SCHEDULED WATERS AND ADDITIONAL MEASURES

SEASON DATES	
NON-SCHEDULED WATERS	
February 1 - October 7, 2023	Princeton Brook, Bonavista Bay: coastal waters to the head of Princeton Pond.
	Robin Hood Pond, Port Rexton: mouth up to Route 230.
	Colliers Bay River, Long Cove, Thornlea area: mouth to ½ kilometre upstream.
	Chapel Arm River, Trinity Bay: mouth to ½ kilometre upstream.
	Spread Eagle River, Trinity Bay: mouth to ½ kilometre upstream.
	South Dildo River, Trinity Bay: mouth upstream to upper side of bridge on Route 80.
	New Harbour River, Trinity Bay: mouth to ½ kilometre upstream.
	Hopeall River, Trinity Bay: mouth upstream to outlet from Cobner’s Pond.
	Green’s Harbour River, Trinity Bay: mouth to head of Scotch Pond.
	Whiteway River, Trinity Bay: mouth upstream to first pond.
	Heart’s Delight River, Trinity Bay: mouth upstream to first pond.
	Heart’s Content Brook, Trinity Bay: mouth upstream to first pond.
	Harry’s Pond, on Salmon Cove River, Conception Bay.

SEASON DATES	
NON-SCHEDULED WATERS	
February 1 - October 7, 2023	Island Pond Brook, Conception Bay: mouth to head of Rossiter's Pond.
	Shearstown River, Conception Bay: mouth to 1 kilometre upstream, excluding that portion 6 metres above the Conception Bay Highway Bridge, downstream 6 metres below the Conception Bay Highway Bridge.
	North River, Conception Bay: from Newell's Road, downstream to bait-and-spinner signs near railway trestle.
	South River, Conception Bay: from 'the Motion', down to bait-and-spinner signs near Route 70 highway.
	Avondale River, Conception Bay: mouth to power line.
	Indian Pond, Holyrood, Conception Bay: mouth to head of Indian Pond.
	Colliers River, Conception Bay: mouth to ½ kilometre upstream.
	Seal Cove River, Conception Bay: mouth to head of Seal Cove Pond.
	Lower Gullies River, Conception Bay: mouth upstream to Conception Bay Highway.
	Kelligrews River, Conception Bay: mouth upstream to Conception Bay Highway.
	Manuels River, Conception Bay: mouth upstream to falls.
	Topsail River, Conception Bay: mouth upstream to culvert on Topsail Beach Road.
	Quidi Vidi River: harbour entrance upstream to the dam below Quidi Vidi Lake.
	Waterford River: mouth upstream to where river exits Bowering Park.

SEASON DATES	
NON-SCHEDULED WATERS	
February 1 - October 7, 2023	Stone Ducky Brook (Bay Bulls): mouth upstream to dam.
	Witless Bay River: mouth upstream to 25 metres below the power house.
	Cape Broyle River: mouth to 1 kilometre upstream.
	Mobile River: mouth upstream to power house.
	Aquaforte River: mouth to ½ kilometre upstream.
	Chance Cove River, Southern Shore: mouth to 1 kilometre upstream.
SCHEDULED WATERS	
September 8 – October 7, 2023	Shoal Harbour River: coastal waters to a point 25 metres below dam.
	Salmon Cove River, Conception Bay: mouth to 1 kilometre upstream.
	North River, Conception Bay: mouth to 1 kilometre upstream.
	South River, Conception Bay: mouth to 1 kilometre upstream.
	Renews River: mouth to Southern Shore Highway.
	Biscay Bay River: mouth to Flat Rock Pool.
	Salmonier River: mouth to Vicker's Road.
	Colinet River: mouth to The Whirlpool, head of Colinet Pond.
	North Harbour River, St. Mary's Bay: mouth to spawning channel at SAEN road.
	Northeast River, Placentia: mouth to 30 metres below the fishway.

SCHEDULED WATERS	
September 8 – October 7, 2023	Southeast River, Placentia: mouth to ½ kilometre upstream.
	Come by Chance River: mouth to ½ kilometre upstream.
	Pipers Hole River: mouth to ½ kilometre upstream.
ADDITIONAL MEASURES	
Retention of brown trout permitted on these scheduled salmon rivers June 1–October 7, 2023. Only brown trout may be retained on these scheduled rivers from September 8–October 7, 2023.	
Valid salmon licence required when angling for brown trout on scheduled salmon rivers at all times.	
Barbless hooks required only on scheduled portions of rivers.	

ANNEX 9

SMELT

Smelt angling dates are consistent with trout angling dates in non-scheduled inland waters (See “Season Dates” on Page 25), with the exception of the following list of ponds, which open January 15. Only smelt may be retained when these ponds are closed to trout angling from January 15 - January 31.

DATE	INSULAR NEWFOUNDLAND
May 15 - September 7, 2023; January 15 - April 15, 2024	Gambo Pond.
	Gander River seaward from the Gander Bay causeway.
	Southwest Pond off Greenspond Highway.
	Horwood Pond (Notre Dame Bay).
	Southwest Pond, near Horwood.
	First Pond on the Campbellton River.
	Deer Lake.
	Fox Island River, as indicated by DFO caution signs.
	Little Codroy estuary, as indicated by DFO caution signs.
	Engine Hole, as indicated by DFO caution signs.
	Little Barasway, as indicated by DFO caution signs.
	Parsons Pond (Northern Peninsula).
	Portland Creek (Northern Peninsula, excluding Inner Pond).
	Maturin Pond, Long Harbour (Placentia Bay).
	Freshwater Pond (Burin Peninsula).
	Garnish Pond (Burin Peninsula).
	Clam Pond (Burin Peninsula).
	Salt Pond (Burin Peninsula).

DATE	INSULAR NEWFOUNDLAND
May 15 - September 7, 2023;	Lamaline Barasway (Burin Peninsula).
	Salt Water Pond, Boxey/Wreck Cove (Fortune Bay).
	Big Pond, Jacques Fontaine, Fortune Bay.
January 15 - April 15, 2024	Second Traverse Pond.
	Northeast arm inside the Culls Harbour causeway and outside the Eastport causeway.
	North River (Conception Bay), from Newell's Road downstream to bait-and-spinner signs near railway trestle.
	South River (Conception Bay): bait-and-spinner fishing sections of South River, including "Motion," downstream to bait-and-spinner signs near route 70, Conception Bay Highway.
	Salmon Cove River (Conception Bay): Harry's Pond and Salmon Cove, Big Pond (bait-and-spinner fishing areas only).
	Southwest Brook (Port Blandford), from bait and spinner signs seaward to old CN railway trestle.
DATE	LABRADOR
January 15 - September 15, 2024	St. Charles River from bridge down to mouth.
	St. Lewis River: from Sand Banks down to mouth.
	Alexis River: from Soldier down to mouth.
	Saltwater Pond on Port Mernham Brook.
	Danes Pond (Alexis Bay).
	Salt Water Pond (Occasional Harbour).
	Salt Water Pond (White Bear Arm).
	Edwards Pond (Shoal Bay).
	Table Bay Pond.

ANNEX 10

SALMON ANGLING LOG

DFO scientists require catch-and-effort information to develop an understanding of our salmon stocks and the impact angling has on the resource. The salmon angling log is DFO's primary source of catch-and-effort information in the recreational salmon fishery. For best research results, DFO needs log returns from at least 90% of anglers, and the information on each log should be as detailed as possible.

Anglers who purchased a salmon licence are asked to:

- Complete and return the salmon angling log as soon as possible after the season closes.
- If you did not angle, indicate "did not fish."
- If you angled but were unsuccessful, record your daily angling activity.
- Record angling activity at the end of each day.
- Record river names or approximate location of river fished.
- If there is inadequate space to complete your log, record additional information on a separate sheet and submit it with the card.

To submit your log:

- Mail it to the address provided on the card.
- Scan and email it to DFO.NLSalmonAnglers-PecheursdeSaumonNL.MPO@dfo-mpo.gc.ca
- Submit online at <https://www.nfl.dfo-mpo.gc.ca/en/form/salmon-angling-return-form>



Salmon Angling
Return Form

- If you have any questions or concerns regarding submitting your log please email DFO.NLSalmonAnglers-PêcheursdeSaumonNL.MPO@dfo-mpo.gc.ca

**If you are an outfitter, please submit your weekly logs here (<https://www.nfl.dfo-mpo.gc.ca/en/form/weekly-salmon-angling-reports>).*

The Salmonid Association of Eastern Newfoundland (SAEN) supports the management and conservation of our fisheries resources for future generations. SAEN reminds anglers to return their angling log. As an incentive, and in co-operation with the Province of Newfoundland & Labrador and DFO, SAEN is offering \$500 in prizes, including a salmon rod, SAEN shirts and packages of salmon flies. Anglers who return their log will have their names entered for the draw.

2022 WINNER . . .

Lucas Kennel of Mount Pearl was the winner of the first main prize that consisted of a salmon fly rod, SAEN jacket, complimentary SAEN membership, and salmon flies. Second prize went to Jeremiah Chaffey of St. George's and third prize went to Linda Power of Norris Arm.

SAEN and DFO congratulate the winners and extend their thanks to all anglers who returned their salmon angling logs for the 2022 season.

For more information, please contact SAEN:
(709) 722-9300
www.saen.org

ANGLING ACTIVITIES

Quick Reference for Completing Logbook Report

Licence # _____

Report 1

Date _____ Hours Fished _____

Kept Small _____ Released Small _____ Released Large _____

River _____ Fishing Zone _____

Report 2

Date _____ Hours Fished _____

Kept Small _____ Released Small _____ Released Large _____

River _____ Fishing Zone _____

Report 3

Date _____ Hours Fished _____

Kept Small _____ Released Small _____ Released Large _____

River _____ Fishing Zone _____

Report 4

Date _____ Hours Fished _____

Kept Small _____ Released Small _____ Released Large _____

River _____ Fishing Zone _____

Report 5

Date _____ Hours Fished _____

Kept Small _____ Released Small _____ Released Large _____

River _____ Fishing Zone _____

ANNEX 11

RETURNING SCIENTIFIC TAGS

Scientists tag salmon to learn more about their migration patterns and population size. Tags are usually located at the base of the dorsal (back) fin. A reward of \$10 is paid for tags returned with the appropriate information.

When retaining a salmon:

- Promptly return the tag to DFO at the address on the tag; **do not** wait until you return your angling log.
- Include the following information with the returned tag:
 - Date and location of capture (note that the fish was retained)
 - Fork length, whole weight, sex of fish and scale sample
 - Your name and mailing address

When releasing a salmon:

- Leave the tag on the fish, but record the number
- Communicate the number promptly to DFO, along with the date and location of release (note that the fish was released, and include your name and mailing address)

For further information, please call (709) 896-6150.

PROTECT FISH AND FISH HABITAT WHEN USING YOUR ATV

Every year, an increasing number of people in Newfoundland and Labrador are enjoying the use of all-terrain vehicles (ATVs), whether it's to explore the outdoors, haul a load of wood, carry gear to the cabin, or travel to a favourite hunting or fishing spot. An ATV is a great way to travel, but operators should be aware of the potential impacts they can have when crossing rivers and streams.

In Newfoundland and Labrador's rivers and streams, brook trout and salmon spawn in the changeover area between riffles and pools. Riffles are relatively shallow areas with moderate flows and a mainly gravel, cobble bottom. Some boulders may also be present, which break the surface. Pools are deeper and have slower flows.

Below are some fish friendly practices to keep in mind while riding your ATV:

A good rule of thumb for ATV riders, as well as operators of any off-road vehicles, is to stay out of the water.

- Steer clear of wetlands, shorelines, and waterbodies
- Avoid driving your ATV along beaches and streambanks
- Stick to established hard roads and trails
- Cross streams at bridges only

If you must cross a stream:

- Cross where the approach is stable and has a low slope
- Cross at right angles to the stream
- Limit ATV crossing of a stream to a single location
- Cross where the streambed is made of bedrock or large rubble
- Reduce your speed when crossing
- Avoid areas with vegetated, silty, or sandy bottoms
- Keep your ATV in good repair, free of mud, oil, and other harmful substances that could impair water quality
- Cross streams during periods of low flow and when water levels are not greater than the ATV axle height
- Do not skid or drag anything across the ford area/stream bottom

All fish are protected under Canada's *Fisheries Act*. For further information, please contact (709) 772-4140 or email: DFO.fppnl-ppptnel.MPO@DFO-MPO.GC.CA. If you notice an activity that may result in impacts to fish and fish habitat, please contact the nearest DFO Detachment Office listed in Annex 1.

DFO ANGLING ENFORCEMENT EFFORTS FOR SALMON AND TROUT (NL)

In 2022, approximately 60,000 hours were spent on salmon and trout enforcement. Additional compliance and enforcement efforts were provided by Aboriginal inland fisheries enforcement programs.

During the 2022 angling season, a total of 164 salmon and trout violations were detected as a result of DFO's enforcement efforts. These include charges laid, warnings, seizures from persons unknown (e.g. abandoned nets), and cases that are still under investigation. A total of 46 salmon nets, 26 salmon, 51 rods and reels, 1 ATV, 1 vessel and 1 vehicle were seized.

DFO receives valuable information from the public and other enforcement agencies, as well as partners. DFO's association with Crime Stoppers aids in encouraging the public to report poaching and other illegal activity on the rivers. Callers are anonymous and tipsters can earn a cash reward if the tip leads to a conviction.

In 2022, Crime Stoppers Newfoundland and Labrador received 35 tips from the public about illegal fishing activity, 14 of which were directly related to salmon and trout. These tips are an invaluable source of information for fishery officers and guardians, and sometimes lead to charges being laid and convictions being handed down by the courts.

**Let's work together and stop
illegal fishing activities in our
rivers, report it directly to DFO**

1-833-DFO-TIPS (336-8477)

SAFE BOATING MESSAGES

All pleasure craft equipped with motors 10 hp or more require either a Pleasure Craft Licence or Vessel Registration. Everyone who operates a motorized pleasure craft must carry proof of competency on board, for example, your Pleasure Craft Operator Card. This includes all motorized boats, no matter the size or horsepower of the engine. This also includes small boats with electric motors.

Are you ready for a safe boating trip?

- ☐ Check the weather forecast.
- ☐ Make sure your boat is suitable for the environment and conditions.
- ☐ Ensure your boat has all the required safety equipment and you know how to use it.
- ☐ Leave a sail plan with someone responsible; include details about where you are going and when you'll be back.
- ☐ Beware of cold water risks. Dress appropriately and in layers.
- ☐ Always wear your Personal Flotation Device (PFD).

**Are you first in...
...and last out?**

If so, it may be time to think about some additional safety precautions if you're going to be out *Stretching the Season*. Here are a few to consider putting on your list:

- Lifejackets**
- Wear them! Accidental cold water immersion can be shocking!
- Be Prepared**
- With sufficient fuel, tools and spare parts handy at all times.
- Who Are You Going to Call?**
- Have both a VHF radio and cell phone with you. And know who you'll call if you need help.
- Float Plan**
- Leave a float plan with someone responsible, who knows what to do if you're overdue!

Stretching the Season

Logos for the Department of Natural Resources and the Department of Transportation are visible at the bottom right.

The Atlantic Salmon Conservation Foundation

NEWFOUNDLAND & LABRADOR



CONSERVATION HIGHLIGHTS

The ASCF is a non-profit organization established through a grant from the Government of Canada. Income generated by this trust fund supports projects and activities contributing to conservation of wild Atlantic salmon and salmon habitat.

The Foundation helps achieve healthy and sustainable wild Atlantic salmon stocks in Atlantic Canada and Québec through active working partnerships among volunteer conservation groups, Indigenous organizations, governments and others.



Newfoundland & Labrador Projects funded by the ASCF in 2022 were led by:

Canadian Parks and Wilderness Society of Newfoundland and Labrador	\$12,500	Intervale Associates Inc.	\$32,000
Environment Resources Management Association	\$29,012	Memorial University of Newfoundland	\$39,467
Freshwater-Alexander Bays Ecosystem Corporation	\$48,100	Northeast Avalon Atlantic Coastal Action	\$17,185
Humber Arm Environmental Association	\$30,755	St. Anthony's Basin Resources Inc.	\$50,000
Indian Bay Ecosystem Corporation	\$30,692	Salmonid Preservation Association for Waters of Newfoundland	\$16,700
		Stewardship Association of Municipalities	\$25,000

For more information, including details of these projects, please visit our website:

www.salmonconservation.ca



Green Crab/Crabe vert



Vase Tunicate/Ascidie jaune



Violet Tunicate/Botrylloïde violet



Golden Star Tunicate/Botrylle étoilé



Coffin Box/Membranipore



Oyster Thief/Codium fragile



RECOGNIZE/RECONNAÎTRE

- Learn to identify aquatic invasive species.
- Apprenez à reconnaître les espèces aquatiques envahissantes.

REDUCE THE RISK/ RÉDUIRE LES RISQUES

- Clean, Drain, Dry your boat & gear; use anti-fouling paint.
- Nettoyez, videz et séchez votre bateau et votre équipement; utilisez une peinture antisalissure.

REPORT/SIGNALER

- Take a picture and report non-native species to:
- Prenez une photo de toute espèce non indigène et signalez sa présence à:

1-855-862-1815

AIS-EAE.NL@dfo-mpo.gc.ca

Hydro reminds anglers to

Stay Safe and Stay Clear of Dams and hydroelectric facilities this fishing season



Water levels and flows can increase quickly and with little warning.

On the Exploits River, be particularly aware near Millertown Dam and the hydro facilities in Grand Falls-Windsor and Bishop's Falls.

Use caution and stay safe:

WATCH for warning signs, fences, buoys and booms near hydro dams.

AVOID areas immediately upstream and downstream of hydro facilities.

NEVER anchor or tie a boat below a dam.

STAY OFF dams unless there are public walkways.

Salmometer

HOW BIG WAS THAT FISH?

The Atlantic Salmon Federation has devised a length/weight table, called a Salmometer. It enables the angler to estimate the weight of the salmon once its length has been measured. (In catch-and-release angling it is not advisable to weigh the fish; there is too great a danger of fatally injuring the fish.)

The length of the fish must be measured from the tip of the nose to the fork of the tail. Look up the length in the Salmometer, given in both inches and centimetres, to determine the weight, in pounds and kilograms, immediately to the right.

Length and weight data from different river systems were used to prepare the Salmometer. Salmon from other rivers may differ somewhat in shape, so the precise weight of your salmon may be slightly higher or lower than the figure given in the Salmometer.

in. / cm	lb. / kg	in. / cm	lb. / kg
19.0 / 48.3	2.7 / 1.22	36.0 / 91.4	18.2 / 8.26
19.5 / 49.5	2.9 / 1.32	36.5 / 92.7	19.0 / 8.62
20.0 / 50.8	3.1 / 1.41	37.0 / 94.0	19.7 / 8.94
21.0 / 53.3	3.4 / 1.54	38.0 / 96.5	21.2 / 9.62
21.5 / 54.6	3.8 / 1.72	38.5 / 97.8	22.0 / 9.98
22.0 / 55.9	4.2 / 1.91	39.0 / 99.1	22.7 / 10.30
22.5 / 57.2	4.6 / 2.09	39.5 / 100.3	23.5 / 10.66
23.0 / 58.4	5.0 / 2.27	40.0 / 101.6	24.2 / 10.98
23.5 / 59.7	5.4 / 2.45	40.5 / 102.9	25.0 / 11.34
24.0 / 61.0	5.8 / 2.63	41.0 / 104.1	25.7 / 11.66
24.5 / 62.2	6.2 / 2.81	41.5 / 105.4	26.5 / 12.02
25.0 / 63.5	6.6 / 3.00	42.0 / 106.7	27.2 / 12.34
25.5 / 64.8	7.0 / 3.18	42.5 / 108.0	28.0 / 12.70
26.0 / 66.0	7.4 / 3.36	43.0 / 109.2	28.7 / 13.02
26.5 / 67.3	7.8 / 3.54	43.5 / 110.5	29.5 / 13.38
27.0 / 68.6	8.2 / 3.72	44.0 / 111.8	30.3 / 13.74
27.5 / 69.9	8.6 / 3.90	44.5 / 113.0	31.0 / 14.06
28.0 / 71.1	9.0 / 4.08	45.0 / 114.3	31.8 / 14.42
28.5 / 72.4	9.4 / 4.27	45.5 / 115.6	32.5 / 14.74
29.0 / 73.7	9.8 / 4.45	46.0 / 116.8	33.3 / 15.10
29.5 / 74.9	10.3 / 4.67	46.5 / 118.1	34.0 / 15.42
30.0 / 76.2	10.7 / 4.85	47.0 / 119.4	34.8 / 15.79
30.5 / 77.5	11.1 / 5.03	47.5 / 120.7	35.5 / 16.10
31.0 / 78.7	11.6 / 5.26	48.0 / 121.9	36.3 / 16.47
31.5 / 80.0	12.0 / 5.44	48.5 / 123.2	37.0 / 16.78
32.0 / 81.3	12.4 / 5.62	49.0 / 124.5	37.8 / 17.15
32.5 / 82.6	13.0 / 5.90	49.5 / 125.7	38.5 / 17.46
33.0 / 83.8	13.7 / 6.21	50.0 / 127.0	39.3 / 17.83
33.5 / 85.1	14.5 / 6.58	50.5 / 128.3	40.0 / 18.14
34.0 / 86.4	15.2 / 6.90	51.0 / 129.5	40.8 / 18.51
34.5 / 87.6	16.0 / 7.26	51.5 / 130.8	41.5 / 18.82
35.0 / 88.9	16.7 / 7.58	52.0 / 132.1	42.3 / 19.19
35.5 / 90.2	17.5 / 7.94	52.5 / 133.4	43.0 / 19.50

The Anglers' Guide is published by Fisheries and Oceans Canada (DFO). It provides anglers with information on some of the regulations pertaining to salmon and trout angling in inland and coastal waters of Newfoundland and Labrador. It is recommended that anglers read the guide to become familiar with the regulations prior to angling. Regulatory changes to management measures such as season dates, bag limits, river closures, and licence fees may occur following publication. The Anglers' Guide is neither a legal document nor a complete collection of current applicable legislation; it is an abbreviated guide issued for the convenience of anglers. The *Fisheries Act* and Regulations, and the *Wildlife Act* and Regulations, should be consulted for interpreting and applying the law. If further clarification is required, please contact DFO or the provincial government offices listed in Annex 1.

Published By: Fisheries and Oceans Canada
Newfoundland and Labrador Region
P.O. Box 5667, St. John's, NL A1C 5X1
www.nfl.dfo-mpo.gc.ca

© His Majesty the King in Right of Canada, as represented by the Minister of the Department of Fisheries and Oceans, 2023
Cat no: Fs111-1E-PDF
ISBN: 1924-6021

Put poachers in focus.



⚡ WB



ISO 200



Report suspected poachers **24/7**
anonymously and help save
our valuable fish and wildlife
resources.

1-877-820-0999
www.stoppoaching.ca

Resource Enforcement Division

 Follow us on Twitter @FFA_GovNL


**Newfoundland
&
Labrador**

CRIME STOPPERS

WWW.NLCRIMESTOPPERS.COM

SEE SOMETHING

SAY SOMETHING

**POACHERS VALUE YOUR SILENCE.
DON'T SUPPORT THEM.**

REPORT THEM.

TALK, TYPE or TEXT your tips

1-800-222-TIPS(8477)

**TIP190 + your tip to: 274637 (CRIMES)
www.nlcrimestoppers.com**

All information is anonymous.

**Crime Stoppers, Fisheries and Oceans Canada
and Resource Enforcement Division
are working together to conserve and protect
inland salmon and trout.**


**Newfoundland
&
Labrador**

Canada 



Fisheries and Oceans
Canada

Pêches et Océans
Canada

CONSERVATION & PROTECTION



**Do you have questions or concerns?
Contact Fisheries and Oceans Canada
Newfoundland and Labrador Region**

Bay Roberts	(709) 786-3960
Marystown	(709) 279-7863
Clareville	(709) 466-8272
Twillingate	(709) 884-2411
Springdale	(709) 673-5250
Stephenville	(709) 643-8000
Rocky Harbour	(709) 458-3082
Happy Valley-Goose Bay	(709) 896-6150

**Report Illegal Fishing Activity Directly to Conservation and
Protection, Fisheries & Oceans Canada**

1-833-DFO-TIPS (336-8477)

OR

Report Illegal Fishing Activity Anonymously to Crime Stoppers

1-800-222-TIPS (8477)



**Let's work together
and stop illegal fishing
activities in our rivers.**

Every time poachers take salmon they are stealing from our community. Poaching is illegal. Help put a stop to this crime. Protecting and preserving our fish is everyone's responsibility.

**Contact DFO directly
1-833-DFO-TIPS
(336-8477)**

Canada