



# STOCK STATUS UPDATE OF ARCTIC SURFCLAM (*MACTROMERIS POLYNYMA*) ON BANQUEREAU AND GRAND BANK TO THE END OF THE 2021 FISHING SEASON

## Context

An update on the status of the offshore Arctic Surfclam (*Mactromeris polynyma*) resource was requested by Maritimes Region Resource Management to support harvest level decisions in the Arctic Surfclam fishery. Surfclam is assessed on a multi-year assessment schedule, with Stock Status Updates produced in interim years. The basis for assessing Arctic Surfclam on Banquereau and Grand Bank was examined at a framework review meeting on June 28–29, 2016. During the framework review, a fisheries-dependent assessment methodology was developed for Banquereau using a spatially disaggregated surplus production model (Hubley and Heaslip 2018). This method was used to provide an assessment of the stock status on Banquereau and potential harvest levels based on two removal values. This report updates fisheries information (landings, catch per unit effort, fishery footprint) and secondary indicators to the end of the 2021 fishing season for both Grand Bank and Banquereau, as well as biomass model results from Banquereau, and assesses them against agreed upon reference points and thresholds. These banks were last assessed in 2017 (DFO 2017, Hubley et al. 2020) with updates conducted annually from 2018 to 2021 (DFO 2022a).

This Science Response Report results from the Science Response Process of July 8, 2022 on the Stock Status Update of Arctic Surfclam.

## Background

The offshore Arctic Surfclam fishery takes place on Banquereau and Grand Bank (Figure 1). Grand Bank refers to the Eastern Grand Banks fishing area, in North Atlantic Fisheries Organization (NAFO) Area 3LNO, with some restrictions as outlined in the licence conditions. Historically, the banks were managed with Total Allowable Catches (TACs) set based on bank-wide estimates of biomass. These biomass estimates were made from scientific surveys, the most recent of which were one survey conducted over three years in 2006, 2008, and 2009 for Grand Bank (Roddick et al. 2011) and 2010 for Banquereau (Roddick et al. 2012). In the absence of new survey data, an assessment approach was developed for Banquereau that restricted biomass estimates to areas of commercially viable densities (a historically fished area) identified from Vessel Monitoring System (VMS) satellite positional data. This method is not currently applied to Grand Bank since fishing effort, specifically swept area, is less than on Banquereau and is dispersed over a larger bank. The stock on Grand Bank is monitored with a set of fishery-dependent secondary indicators for biomass, fishery footprint, and size composition.

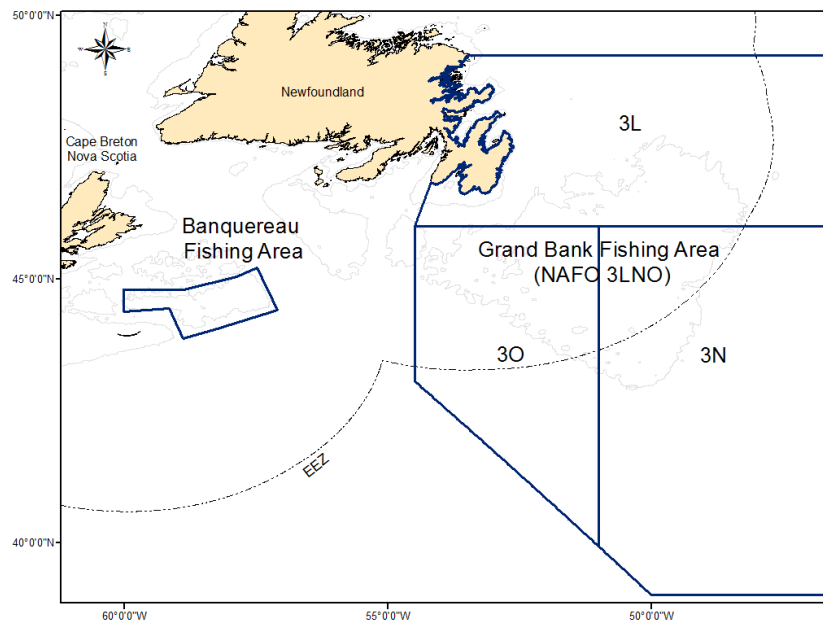


Figure 1. Banquereau and Grand Bank Arctic Surfclam fishing areas (solid lines) from licence conditions.

## Description of the Fishery

Following a three-month test fishery in 1986, an Offshore Clam Enterprise Allocation Program was developed for Arctic Surfclam on Banquereau. The fishery expanded to Grand Bank in 1989, after exploratory fishing on that Bank in 1987 and 1988. In 2021, there were three licences for offshore clam (multispecies), and three vessels fishing. Currently, quota is transferable between licences but not between banks. Effort has moved between the banks over time, with effort currently split between the two banks. Fishing is conducted from large freezer processors using hydraulic dredges on sandy substrates located at 50 to 110 m depth. The main management tools for the offshore clam fishery are limited entry licences, TAC divided into enterprise allocations, 100% industry-funded dockside monitoring, mandatory logbooks, and 100% VMS coverage (DFO 2020b). Observer requirements as identified in the Integrated Fisheries Management Plan (DFO 2020b) were met in 2021 with one at-sea Fisheries Observer trip conducted on Grand Bank, and two conducted on Banquereau. The protocols for fisheries at-sea observers and the companies doing the work have changed many times over the span of the fisheries on both banks. Work is still ongoing to reconcile differences in protocols, especially with respect to how discards were recorded for retained species. On both banks, Arctic Surfclam comprises the largest proportion of the landed species while the composition of the other landed species varies between the banks (Appendix 1, Table A1 and Table A2). On Banquereau in 2021, the top three discard taxa were sand dollars, whelk, and sea urchin, which in total accounted for 23.5% of the discards by weight (Appendix 1, Table A3). On Grand Bank in 2021, the top three discard taxa were sand dollars, Northern Propeller Clam, and Sea Star, which in total accounted for 84.4% of discards by weight (Appendix 1, Table A4).

## Fishery Data Types and Conversion Factors

Landings in the offshore clam fishery are in the form of product types (Table 1). These Arctic Surfclam partial weight product types are converted to round weights (i.e., whole animal weight) using conversion factors. Not all landed product types (e.g., mantle) count against the TAC

because the product is already accounted for in the conversion of foot product to round weight. The fishery produces three mixed-species product types. C-grade is a mixed product that can contain Surfclam foot but also parts of other species. An additional component factor of 80% (i.e., 80% of the C-grade product is Surfclam and 20% is not) was developed for this product and used for the first time in the 2019 fishing year. A review of this component factor in 2020 by Fisheries and Oceans (DFO) Science, DFO Resource Management, and industry recommended it be changed to 86%. The other mixed species product types (recovery and mantle mix) in this fishery do not contain Surfclam foot, and they do not have component factors or count against the quota. Although C-grade counts against the TAC for quota monitoring purposes, it is not currently included by DFO Science in the stock assessment model.

Table 1. Arctic Surfclam product types landed in the offshore clam fishery and the conversion factors applied to the product type. NA indicates no conversion factor is required for that product.

Product Type	Conversion Factor
Blanched foot (tongue)	6.51
Blanched mantle	NA
C-grade (mixed species product; 2019-2020)	80% * 6.51
C-grade (mixed species product; 2021-present)	86% * 6.51

The other commonly retained species in the offshore clam fishery are Northern Propeller Clam (*Cyrtodaria siliqua*), Greenland Smooth Cockle (*Serripes groenlandicus*), and Ocean Quahog (*Arctica islandica*). These are also landed as product types and converted to a round weight for monitoring (Table 2). Conversion factors for these species are based on a Statistical Coordinating Committee for the Atlantic Coast report (STACAC 1984). In 2021, component factors for the Greenland Cockle portion of the C-grade product were developed for Banquereau and Grand Bank (DFO 2022b). Those component factors have been applied retroactively since 2021, and values for Greenland Cockle landings in the years affected (2011 to 2020 on Banquereau, 2013 to 2020 on Grand Bank) have increased slightly compared to updates before 2021. The Northern Propeller Clam portion of the C-grade was found to be negligible (< 0.13%), and a component factor is not used for that species (DFO 2022b).

Table 2. Other species product types landed in the offshore clam fishery and the conversion factors applied to the product types. Conversion factors apply to fishing both banks unless otherwise stated.

Species	Product Type	Conversion Factor
Northern Propeller Clam	Blanched siphon	5.5
Greenland Cockle	Blanched foot (tongue)	5.5
Greenland Cockle	Raw foot (tongue)	5.5
Greenland Cockle (Banquereau)	C-grade (mixed species product)	12% * 5.5
Greenland Cockle (Grand Bank)	C-grade (mixed species product)	8.8% * 5.5
Ocean Quahog	Foot (tongue)	6.0

### Fishery Data Management and Data Review

Commercial data used in this assessment is stored in the Offshore Clam Data Archival (CLAM) database. Fishing data are supplied to DFO Science directly from industry and loaded into the CLAM database. Before and during loading, the raw data are validated against data integrity checks (e.g., expected ranges for certain values, expected unit types), and potential errors are discussed with industry and corrected before being stored in the database. This database is separate from the databases used in the two regions to store commercial data for quota monitoring: the Maritime Fishery Information System 1.0 and 2.0 (MARFIS) and Newfoundland and Labrador Region's Catch and Effort database.

### Analysis and Response

#### Commercial Fishery

In 2021, Arctic Surfclam landings in the MARFIS and Catch and Effort databases were 20,926 t against a TAC of 20,943 t for Banquereau and 14,800 t against a TAC of 14,756 t for Grand Bank. On Grand Bank, the mean Catch Per Unit Effort (CPUE) in 2021 was 192 g/m<sup>2</sup>, an increase from 170 g/m<sup>2</sup> in 2020. On Banquereau in 2021, mean CPUE was 156 g/m<sup>2</sup>, an increase from 153 g/m<sup>2</sup> in 2020. Landings and CPUE time series for both banks are shown in Figure 2. Since 2015, CPUE on Banquereau has been increasing steadily while effort, defined as fishery footprint (calculated as the sum of the area dredged, with no adjustment for overlapping tows) has mostly decreased or stayed the same (there was some increase in 2019 and 2021). This is likely due to the increasing efficiency of the fleet on this bank.

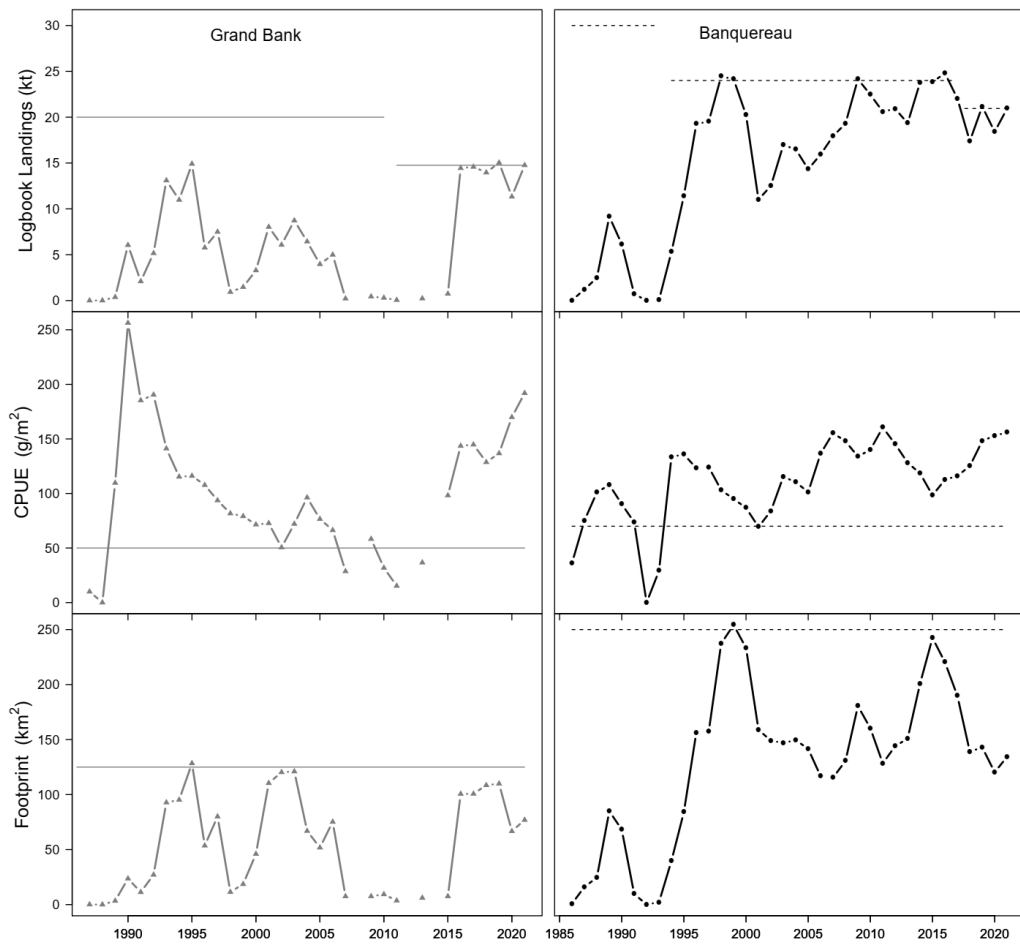


Figure 2. Landings in kilotonnes (kt), Catch Per Unit Effort (CPUE; g/m<sup>2</sup>), and fishery footprint (km<sup>2</sup>) for Grand Bank (left) from 1987 to 2021 and Banquereau (right) from 1986 to 2021. Horizontal lines represent Bank-specific total allowable catch (top panels) or threshold levels for secondary indicators (bottom four panels; see: Indicators of Stock Status). Gaps in the Grand Bank data indicate years in which no fishing occurred.

### Spatial Production Model for Banquereau

Following the 2016 framework review (Hubley and Heaslip 2018), the stock definition for Banquereau has been restricted to the area directly under exploitation. Five spatial assessment areas are used to divide Banquereau (Figure 3). Within these areas, the fished (exploited) areas are determined using VMS data, which is used as a proxy for Surfclam habitat (Figure 4). For each of the five assessment areas, a surplus production model was fit to a time series of CPUE data. Areal expansion of the Surfclam density ( $\text{g}/\text{m}^2$ ) was limited to the fished area.

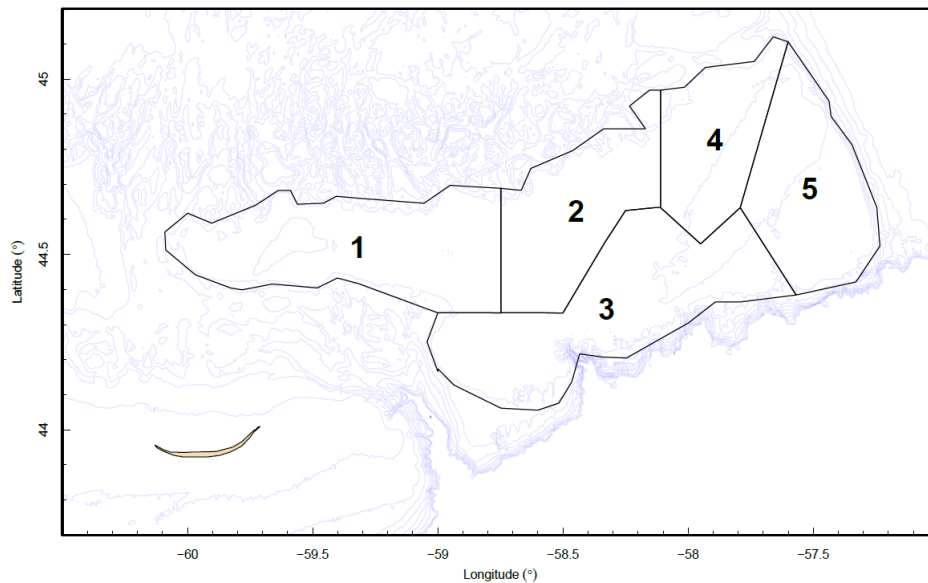


Figure 3. Five spatial assessment areas on Banquereau used in the assessment.

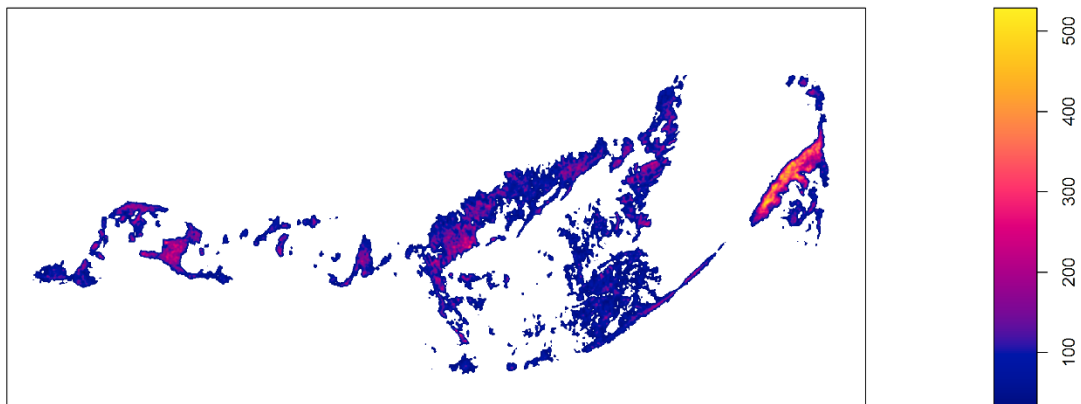


Figure 4. Vessel Monitoring System (VMS) density on Banquereau estimated from a kernel smoothed intensity function with a standard deviation of 0.2 on a  $100 \text{ m}^2$  resolution. The scale bar shows VMS intensity expressed as the number of transmissions (pings) per  $\text{km}^2$  for 2004–2016. The colored region shows the area where VMS intensity is greater than 30 pings/ $\text{km}^2$ .

The annual CPUE index used in the model is shown in Figure 5. Catch rates in area 5 increased 38% from  $165 \text{ t}/\text{km}^2$  in 2020 to  $228 \text{ t}/\text{km}^2$  in 2021, which were also the highest catch rates in 2021. Catch rates in all other areas decreased or stayed the same in 2021.

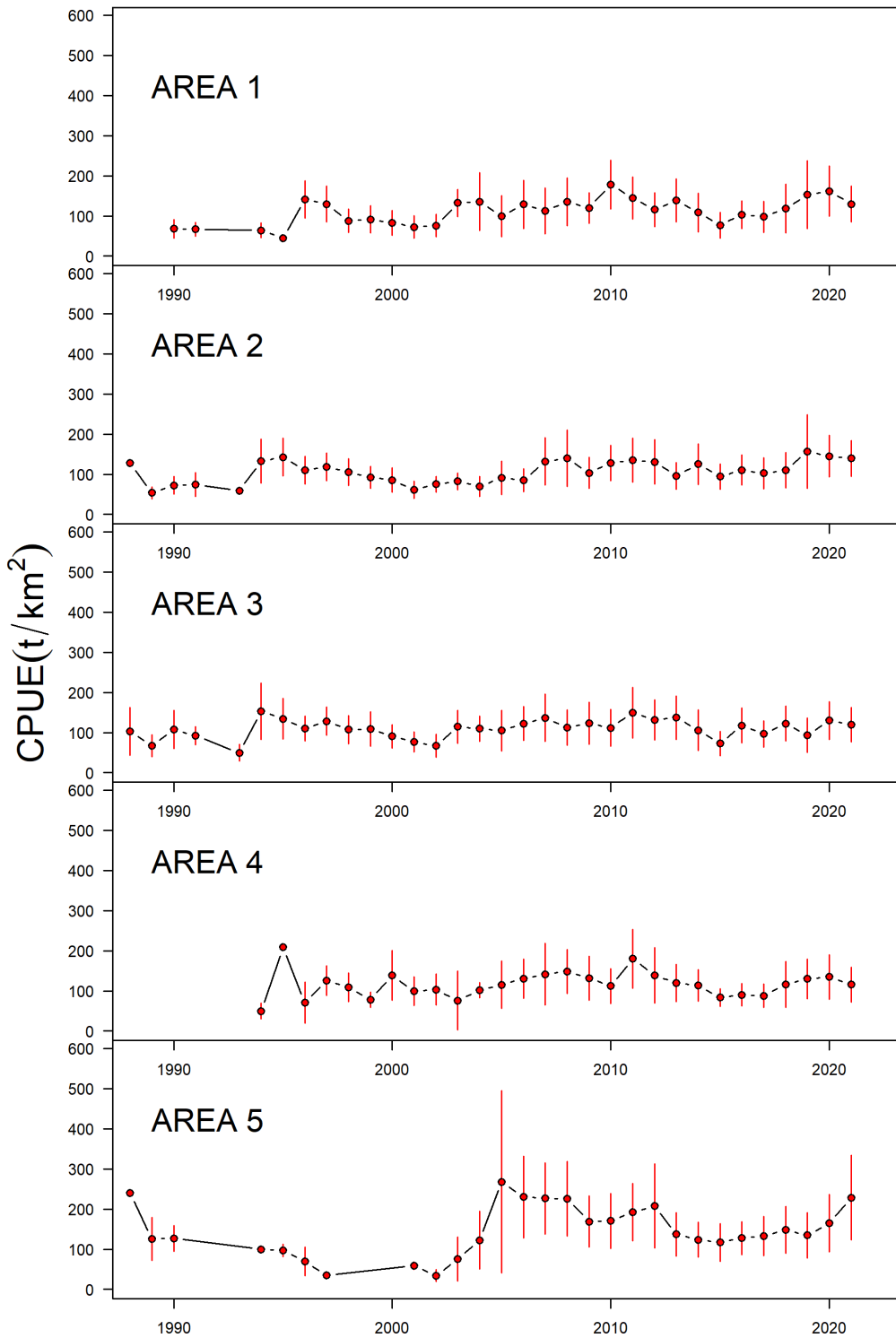


Figure 5. Banquereau Catch Per Unit Effort (CPUE; tonnes per km<sup>2</sup>) by spatial assessment area (1 to 5) showing the annual mean values (red points) ± 1 standard error (red lines).

The modelled estimate of exploitation rates (catch divided by biomass, from the model) for each assessment area demonstrates the movement of the fishery among the different areas in different years (Figure 6). Increases in exploitation rate within an assessment area are generally followed by a reduced rate in subsequent years. In 2021, exploitation rates increased in areas 1 and 5, decreased in area 2, and were similar to 2020 in areas 3 and 4. The exploitation rate in area 1 was the highest overall at 0.063, closely followed by area 5 at 0.061. Exploitation rates in the other areas ranged from 0.008 to 0.019.

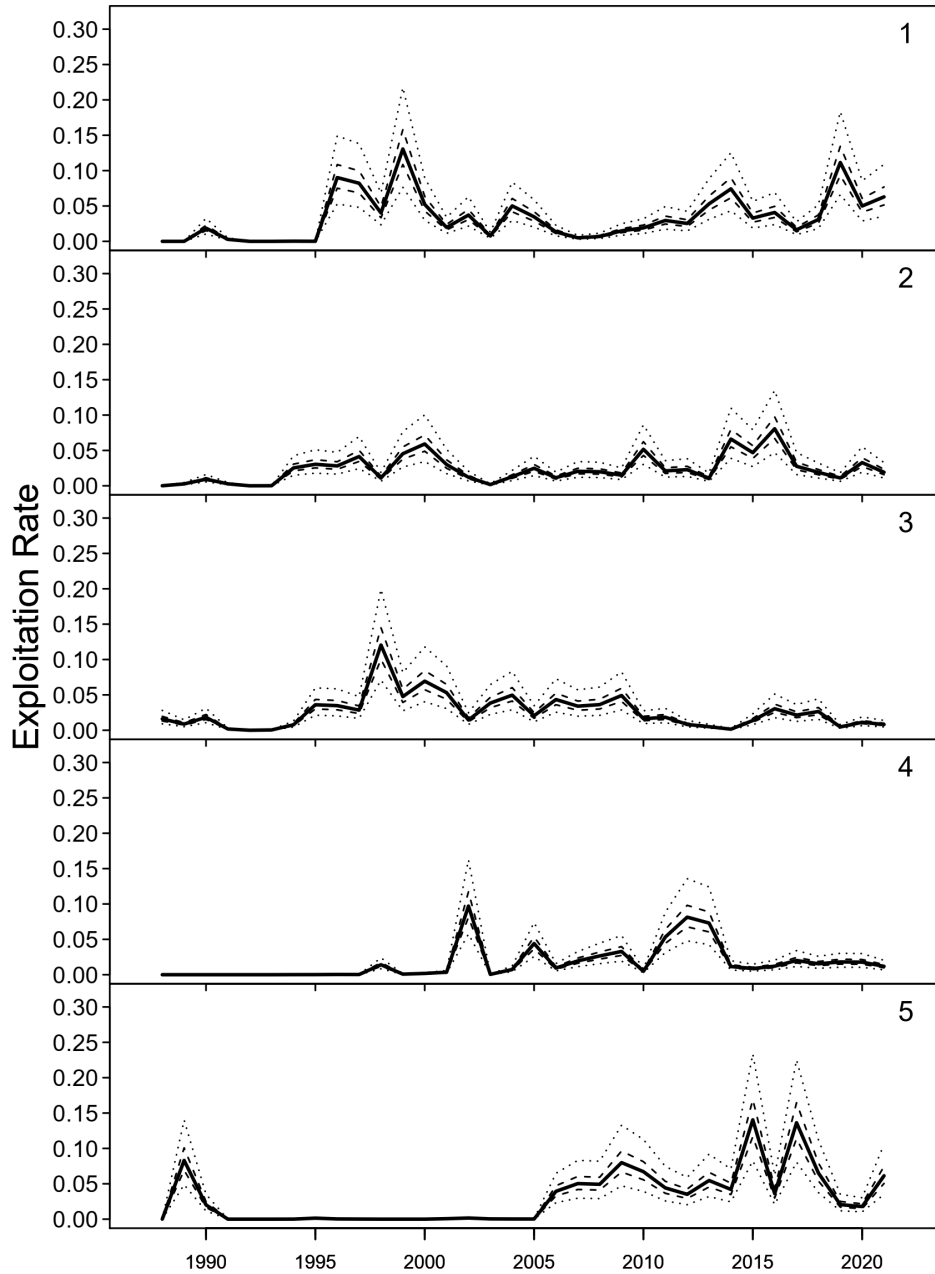


Figure 6. Estimates of exploitation rate on Banquereau for 1988 to 2021 from the spatial production model by assessment area. Lines denote the median (solid), 50% credible interval (dashed), and 95% credible interval (dotted).

Median areal biomass estimates from the model in 2021 indicate all areas are within 7% of the biomass estimates in the previous year (Figure 7), except for area 5 which increased by 13%.

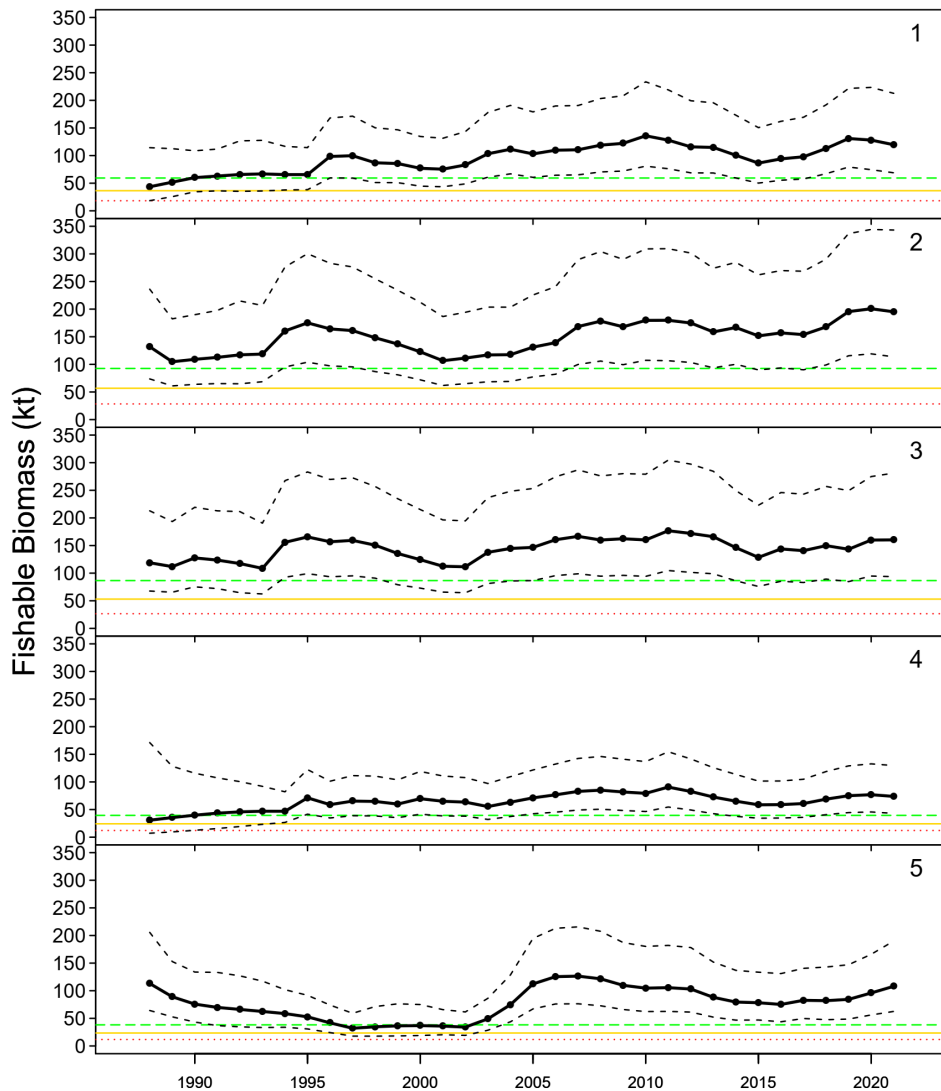


Figure 7. Estimates of fishable biomass (kilotonnes) on Banquereau from the spatial production model by assessment area. Black lines denote the median estimate (solid line with circles) and 95% credible interval (dotted line). The horizontal lines represent (from top to bottom): CPUE<sub>70</sub> reference (green), upper stock reference (yellow), and limit reference point (red).

### Indicators of the Stock Status

Three secondary indicators of stock status were developed for Banquereau and Grand Bank based on commercial fishery data. Data for the secondary indicators are not restricted to the fished area used for biomass modelling. Catch per unit effort is the biomass indicator, and the thresholds are 70 g/m<sup>2</sup> for Banquereau and 50 g/m<sup>2</sup> for Grand Bank. Both banks were above the CPUE indicator threshold in 2021 (Figure 2). Footprint is an indicator of the spatial extent of the fishery and stock density - as densities decline the footprint will increase as more area is fished to maintain landings, or as the fishery searches for new high density areas. The footprint thresholds are 250 km<sup>2</sup> for Banquereau and 125 km<sup>2</sup> for Grand Bank. Both banks were below



**Maritimes Region**

the footprint threshold in 2021 (Figure 2). The relative abundance of old, large clams is monitored as the size composition indicator. This maintains older age classes in the stock. Large changes in the size composition indicator between years could be a function of fishing location, as the size composition of the stock can vary across the bank. The size composition indicator is 1% of the unsorted catch being greater than or equal to 120 mm for Banquereau, or 0.5% being greater than or equal to 105 mm for Grand Bank. Both banks were above the size composition indicator threshold in 2021 (Table 3).

*Table 3. Percent of large clams in unsorted commercial catch and sample size (n) for Grand Bank and Banquereau. Threshold is 1% for Banquereau and 0.5% for Grand Bank. Only ten years of data shown.*

Year	Grand Bank		Banquereau	
	% > 105 mm	n	% > 120 mm	n
2012	-	-	4.46	12,244
2013	6.67	180	2.73	21,501
2014	-	-	1.61	14,327
2015	19.17	600	1.53	15,237
2016	16.97	9,000	2.28	19,667
2017	15.95	7,598	2.51	17,195
2018	11.35	8,000	1.14	16,895
2019	9.72	9,300	2.43	15,599
2020	17.25	6,998	3.81	13,798
2021	10.90	7,493	2.10	15,191

*A dash (-) indicates no data available.*

Biomass based reference points have been presented for Banquereau (Hubley et al. 2020) based on the default 0.4 and 0.8  $B_{MSY}$  (Biomass at Maximum Sustainable Yield) often used to define the Limit Reference Point (LRP) and Upper Stock Reference (USR). These biomass reference points are based on the fished area biomass, not the entire bank. Due to the potential that these values are underestimated for this stock, it was proposed that the stock status also be assessed against the previously established CPUE threshold level of 70 g/m<sup>2</sup>. This reference value (CPUE<sub>70</sub>) was translated into biomass estimates for each assessment area (i.e., green line in Figure 7). In 2021, the probability that the biomass estimate was above the USR and the CPUE<sub>70</sub> reference line was 0.99 or greater for all areas (Table 4).

The fishery on Banquereau does not operate based on individual TACs for each assessment area. Fishing can occur anywhere on the Bank; therefore, the TAC is determined from the total biomass in all fished areas of the Bank (Figure 8). In 2021, the estimated median total biomass in the fished areas was 655,893 t (95% CI: 416,360–1,062,538 t). The probability that the total bank biomass from the five assessment areas combined was above the USR and the CPUE<sub>70</sub> reference line was > 0.99 (Table 4).

Table 4. Probability that median biomass estimates are above the Limit Reference Point (LRP), Upper Stock Reference (USR), and a CPUE of 70 g/m<sup>2</sup> (CPUE<sub>70</sub>) for each assessment area (1–5) and for the total area on Banquereau.

Area	LRP	USR	CPUE <sub>70</sub>
1	> 0.99	> 0.99	> 0.99
2	> 0.99	> 0.99	> 0.99
3	> 0.99	> 0.99	> 0.99
4	> 0.99	> 0.99	> 0.99
5	> 0.99	> 0.99	> 0.99
Total	> 0.99	> 0.99	> 0.99

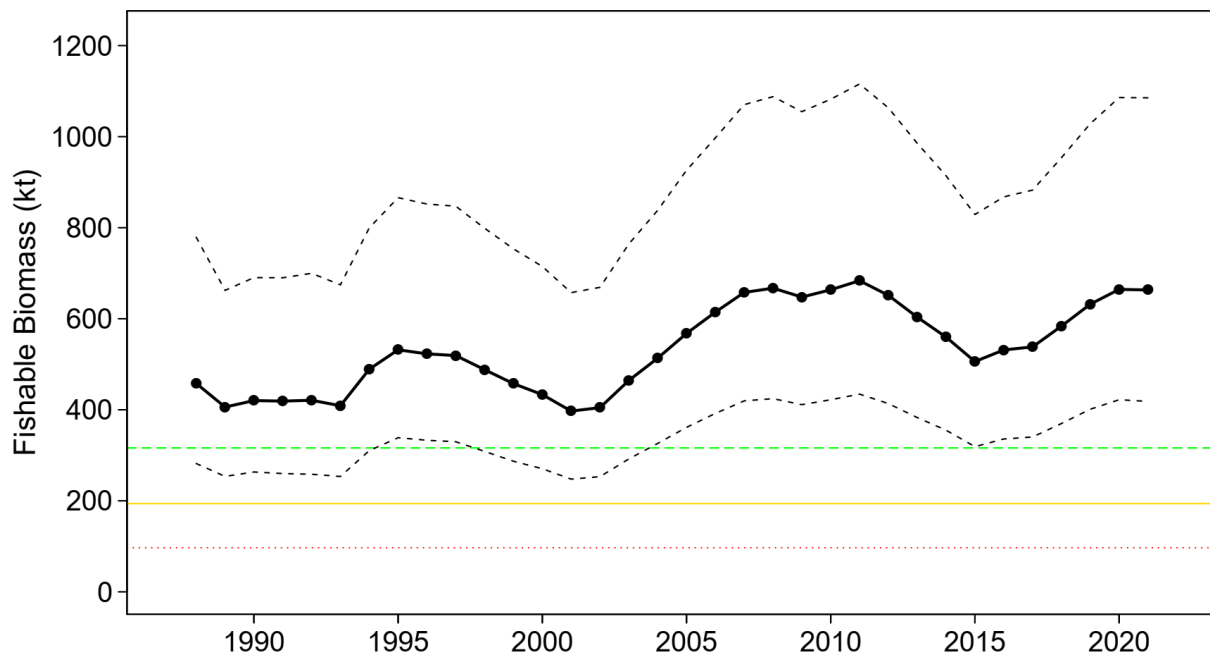


Figure 8. Estimate of fishable biomass (kilotonnes) on Banquereau from 1988 to 2021 from the spatial production model for the total fished area. Black lines denote the median estimate (solid line with circles) and 95% credible interval (dotted line). The horizontal lines represent (from top to bottom): CPUE<sub>70</sub> reference (green), upper stock reference (yellow), and limit reference point (red).

### Other Retained Catch in the Fishery

The Offshore Clams Integrated Fishery Management Plan (DFO 2020b) allows for the retention of other clam species. There are no limits on the bycatch of Northern Propeller Clams or Greenland Cockles. Greenland Cockle landings on Grand Bank have been decreasing since the time-series high of 3,673 t in 2019 to 2,369 t in 2021 (Figure 9). Greenland Cockle landings on Banquereau have been increasing slowly since 2016, and they increased from 196 t in 2020 to 238 t in 2021 (Figure 10). Northern Propeller Clam landings on Banquereau increased annually from 2010 to 2014, then fluctuated but remained high relative to earlier years, reaching the time-series high in 2019 (8,747 t). Landings then decreased to 5,290 t in 2020, followed by an increase to 6,231 t in 2021. On Grand Bank, landings of Northern Propeller Clam decreased from 2,143 t in 2019 to 983 t in 2020, but then more than tripled, reaching the time-series high (3,038 t) in 2021 (Figure 9). Ocean Quahog landings have been minimal on both banks since the late 1990s. Ocean Quahog catch is limited on Grand Bank to 10% of Surfclam catch, to a

Maritimes Region

maximum of 500 t. On Banquereau, there is an Ocean Quahog TAC of 800 t. In 2021, the TAC was not exceeded for Ocean Quahog on either bank (Figure 9 and Figure 10). In August 2021, the fishery switched from a policy of partial retention of the three above bycatch species to one of 100% retention. Therefore, increases in landings in 2021 are likely reflective of this change and do not necessarily indicate underlying population changes.

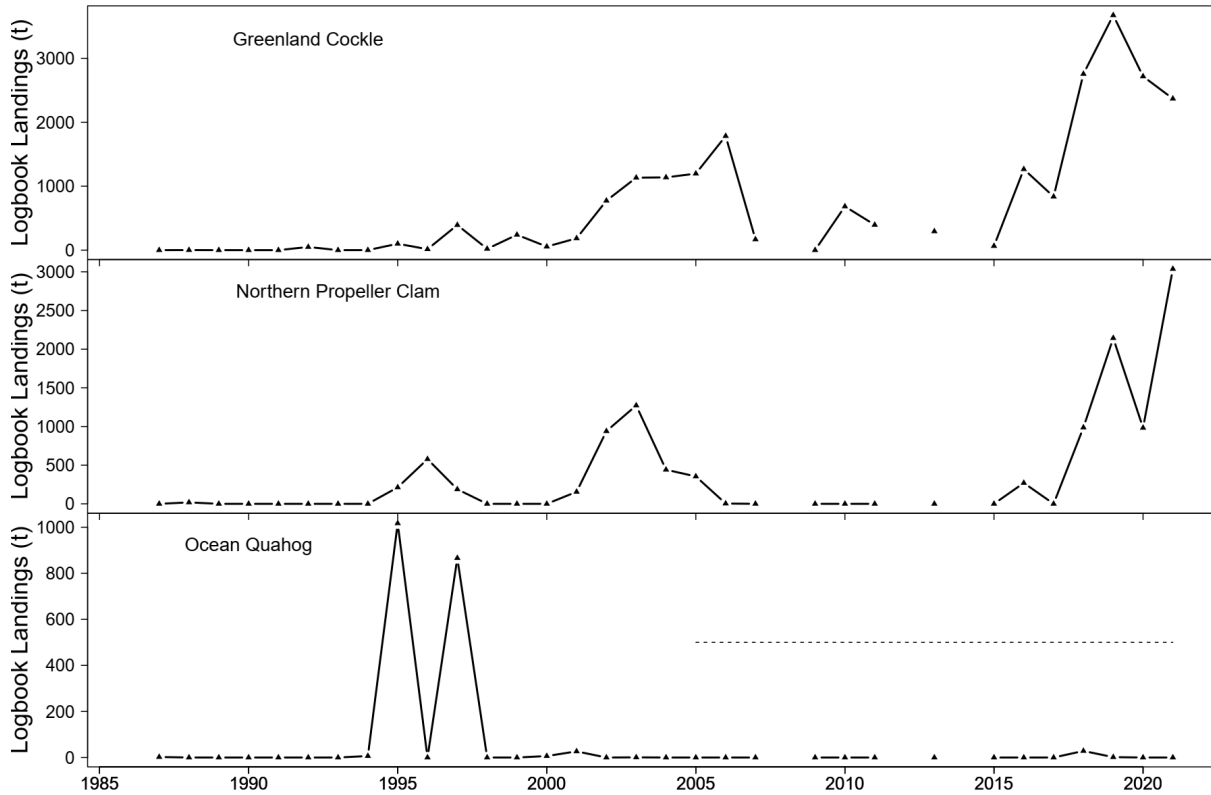


Figure 9. Landings from the fishery logbooks for three other clam species on Grand Bank from 1987 to 2021. Dashed horizontal line is maximum limit for Grand Bank. Note different axes. Gaps indicate years in which no fishing occurred.

Maritimes Region

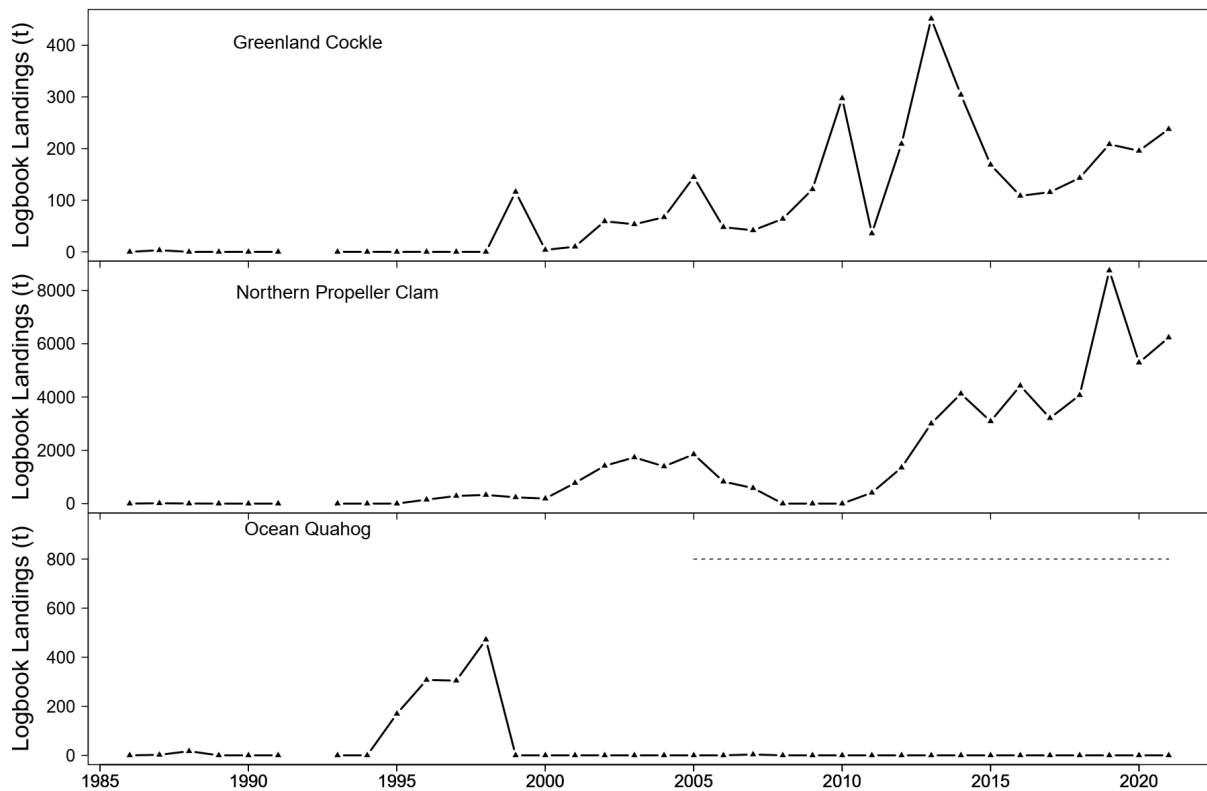


Figure 10. Landings from the fishery logbooks for three other clam species on Banquereau from 1986 to 2021. Dashed horizontal line is total allowable catch for Banquereau. Note different axes.

**Sources of Uncertainty**

This fishery is increasing in efficiency. This is evident in both the relationship between CPUE and effort, and is the opinion of industry participants. Efficiencies have been gained in vessel capacity and the use of technology to locate, sort, and process the catch. The increasing ability of industry to maximize their catchability is not accounted for in the current model. These increases in efficiency and catchability can obscure actual biomass trends. There are no recent fishery-independent data sources from which to estimate biomass estimates or stock indicators. The last survey on Banquereau was in 2010, and the last surveys on Grand Bank were in 2006, 2008, and 2009.

The spatial production model parameters for growth rate and carrying capacity are partly confounded and potentially biased because a high growth rate and low carrying capacity give the model more flexibility to fit the data. If the growth rate estimate is too high, and carrying capacity too low, reference points are likely to be overly optimistic (higher  $F_{MSY}$ —Fishing Mortality at Maximum Sustainable Yield, and lower  $B_{MSY}$ ). This is likely happening with the reference points for Banquereau.

**Conclusions**

The Banquereau fished area stock is considered to be in the Healthy Zone; the 2021 biomass estimate is above the LRP, USR, and  $CPUE_{70}$  references, and this is supported by the secondary indicators. All the secondary indicators for Grand Bank are positive relative to their respective thresholds.

**Maritimes Region**

Potential removal amounts were calculated using the 2021 median biomass estimates from the spatial production model. A removal level of 0.5  $F_{MSY}$  would result in a TAC (28,870 t) that is greater than the 2022 TAC for Banquereau (20,943 t). The 2022 TAC remained lower than the removal amount at 0.5  $F_{MSY}$  from the 2021 update (DFO 2022). A removal level of 0.33 M, where M is the natural mortality rate of 0.08 (Hubley and Heaslip 2018), would result in a much lower TAC when applied to the fished area biomass (Table 5). Previous analyses based on the surplus production model have estimated  $F_{MSY}$  near 0.09; however, catch rates tend to decline when Removal Reference (F) is greater than 0.045 (0.5  $F_{MSY}$ ). The removal reference level of 0.5  $F_{MSY}$  was proposed as an intermediate value between 0.33 M (which was developed for a larger less productive stock area) and  $F_{MSY}$ .

*Table 5. Areal removals in tonnes for removal reference levels (F) for assessment areas (1–5) on Banquereau calculated using the 2021 median biomass estimates from the spatial production model.*

<b>Removal Reference (F)</b>	<b>Area 1</b>	<b>Area 2</b>	<b>Area 3</b>	<b>Area 4</b>	<b>Area 5</b>	<b>Total</b>
0.5 $F_{MSY}$ (0.045)	5,261	8,570	7,058	3,244	4,737	28,870
0.33 M (0.026)	3,068	4,998	4,117	1,892	2,763	16,839

**Contributors**

<b>Name</b>	<b>Affiliation</b>
Geraint Element (Lead)	DFO Science, Maritimes Region
Monica Bravo	DFO Science, Maritimes Region
Lei Harris	DFO Science, Maritimes Region
Manon Cassista-da Ros	DFO Science, Maritimes Region
Brittany Wilson	DFO Science, Maritimes Region
Rabindra Singh	DFO Science, Maritimes Region
Carl MacDonald	DFO Resource Management, Maritimes Region
Martin Henri	DFO Resource Management, Newfoundland and Labrador Region

**Approved by**

Tana Worcester  
A/Regional Director of Science  
DFO Maritimes Region  
Dartmouth, Nova Scotia

Date: 2 August 2022

**Sources of Information**

DFO. 2017. [Assessment of the Arctic Surfclam \(\*Mactromeris polynyma\*\) Stock of Banquereau for 2016](#). DFO Can. Sci. Advis. Sec. Sci. Advis. Rep. 2017/047.

DFO. 2020a. [Stock Status Update for Arctic Surfclam \(\*Mactromeris polynyma\*\) on Banquereau and Grand Bank to the end of the 2019 Fishing Season](#). DFO Can. Sci. Advis. Sec. Sci. Resp. 2020/057.

DFO. 2020b. [Offshore clam - Maritimes and Newfoundland and Labrador regions](#). Fisheries and Oceans Canada. (Accessed 18 June 2021).

Maritimes Region

---

- DFO. 2022a. [Stock Status Update of Arctic Surfclam \(\*Mactromeris polynyma\*\) on Banquereau and Grand Bank to the end of the 2020 Fishing Season](#). DFO Can. Sci. Advis. Sec. Sci. Resp. 2022/034.
- DFO. 2022b. [Review of Methods for Developing Catch Limits for Greenland Cockle \(\*Serripes groenlandicus\*\) and Northern Propeller Clam \(\*Cyrtodaria siliqua\*\) in the Banquereau and Grand Bank Offshore Clam Fisheries](#). DFO Can. Sci. Advis. Sec. Sci. Advis. Rep. 2021/054.
- Hubley, B., and Heaslip, S.G. 2018. [Data Review and Assessment Framework of the Arctic Surfclam \(\*Mactromeris polynyma\*\) on Banquereau and Grand Bank](#). DFO Can. Sci. Advis. Sec. Res. Doc. 2017/069. v + 49 p.
- Hubley, B. Heaslip, S.G., and Stanley, R.R.E. 2020. [Assessment of the Arctic Surfclam \(\*Mactromeris polynyma\*\) stocks on Banquereau and Grand Banks](#). DFO Can. Sci. Advis. Sec. Res. Doc. 2018/063. vi + 65 p.
- Roddick, D., Brading, J., Carrigan, L., Davignon-Burton, T., Graham, S., and McEwen, C. 2011. [Assessment of the Arctic Surfclam \(\*Matromeris polynyma\*\) stock on Grand Bank](#). DFO Can. Sci. Advis. Sec. Res. Doc. 2011/052: 59.
- Roddick, D., Brading, J., Carrigan, L., Davignon-Burton, T., Graham, S., and McEwen, C. 2012. [Assessment of the Arctic Surfclam \(\*Matromeris polynyma\*\) stock on Banquereau in 2010](#). DFO Can. Sci. Advis. Sec. Res. Doc. 2012/050: 59.
- Statistical Coordinating Committee for the Atlantic Coast (STACAC). 1984. Standard Conversion Factors: All Species. STACAC Standards Document No. 2. Fisheries and Oceans Canada.

**Appendix 1**

*Table A1. International Observer Program data on the percent (by weight) composition of landed species from Banquereau by year for the offshore clam fishery. Numbers under the years are the total number of observed trips for that year. Vertical line breaks represent potential changes in observer protocols. Hyphen (-) denotes species not present in that year. Only data collected in the last 20 years is shown, for older data see DFO2020a.*

Common Name	2007	2009	2010	2011	2012	2013	2014	2015	2018	2019	2020	2021
	2	2	2	1	2	2	1	2	1	1	1	2
Arctic Surfclam	92.1	98.4	100	98.5	89.8	51.1	95.4	93.2	91.1	85.2	77.1	84.6
Northern Propeller Clam	1.4	-	-	-	7.4	10.9	4.2	6.3	8.9	13.9	22.1	15.0
Atlantic Surfclam	-	-	-	-	-	33.7	-	-	-	-	-	-
Greenland Smooth Cockle	6.5	1.6	-	1.5	2.9	4.3	0.4	0.5	-	0.6	0.8	0.3
Ocean Quahog	-	-	-	-	-	< 0.01	0.01	0.03	-	0.3	-	-

*Table A2. International Observer Program data on the percent (by weight) composition of landed species from Grand Bank by year for the offshore clam fishery. Numbers under the years are the total number of observed trips for that year. Vertical line breaks represent potential changes in observer protocols. Hyphen (-) denotes species not present in that year. Only data collected in the last 20 years is shown, for older data see DFO2020a.*

Common Name	2007	2016	2018	2019	2020	2021
	1	1	1	1	1	1
Arctic Surfclam	20.8	96.2	90.9	94.2	78.0	68.8
Greenland Smooth Cockle	79.2	3.8	1.9	5.8	22.0	31.2
Northern Propeller Clam	-	-	5.7	-	-	-
Ocean Quahog	-	-	1.5	-	-	-
Atlantic Surfclam	-	-	-	-	-	-

Table A3. International Observer Program data of percent (by weight) composition of discards in the offshore clam fishery on Banquereau. Only species making up the top 99.99% (by weight) of the catch composition are shown. Numbers under the years are the total number of observed trips for that year. Vertical line breaks represent potential changes in observer protocols. Hyphen (-) denotes species not present in that year. Only data collected in the last 20 years is shown, for older data see DFO2020a.

Common Name	2007 2	2009 2	2010 2	2011 1	2012 2	2013 2	2014 1	2015 2	2018 1	2019 1	2020 1	2021 2
Shells	-	-	14.2	34.2	13.6	40.4	24.4	33.8	67.1	26.0	47.1	45.0
Stones and Rocks	-	-	7.9	21.8	28.5	14.3	43.4	33.8	9.8	60.2	39.8	14.5
Sand Dollars	98.5	90.9	63.2	38.8	52.3	39.9	22.3	27.3	15.0	6.2	6.5	16.3
Sea Cucumbers	-	1.7	9.2	0.3	0.1	0.5	2.9	1.0	3.9	3.7	2.5	1.5
Whelk - Buccinidae	-	4.3	1.8	4.3	2.6	3.2	3.3	2.1	1.9	0.4	0.5	4.5
Sea Mouse	-	-	-	-	-	-	-	-	0.5	0.8	0.9	2.2
Sea Urchin - Echinoidea	-	<0.1	0.4	0.3	0.4	0.2	1.7	0.3	0.5	0.4	0.3	2.7
Hermit Crab - Paguridae	-	<0.1	<0.1	0.1	0.2	0.2	0.3	0.2	0.1	0.5	0.3	2.0
Ocean Quahog	-	-	-	-	-	-	-	-	-	-	0.1	2.3
Sand Lances	-	-	0.1	0.1	0.2	-	0.2	0.1	0.1	0.3	0.3	1.3
Sea Star	-	0.5	-	<0.1	0.3	0.1	1.1	0.3	0.1	0.5	0.3	0.5
Thorny Skate	-	<0.1	1.8	<0.1	<0.1	<0.1	0.2	0.1	<0.1	-	<0.1	1.3
Mussel	-	0.4	0.1	-	0.1	0.1	0.1	0.2	-	-	<0.1	1.2
Scallop	-	<0.1	0.7	-	-	0.1	-	<0.1	0.7	-	-	0.5
Giant Sea Scallop	-	0.1	<0.1	<0.1	<0.1	<0.1	0.1	<0.1	-	0.4	0.3	0.1
Sea Anemone	-	-	-	-	-	-	-	<0.1	<0.1	0.2	0.2	0.4
Iceland Scallop	-	0.2	<0.1	0.1	<0.1	<0.1	0.1	<0.1	-	<0.1	0.1	0.6
Thorny-headed Worms	-	-	-	-	-	-	-	-	<0.1	0.1	0.2	0.4
Snow or Queen Crab	1.5	1.3	-	0.1	0.1	0.1	<0.1	0.1	-	<0.1	0.1	0.3
Greenland Smooth Cockle	-	-	-	-	-	-	-	-	-	-	0.2	0.2
Brittle Stars	-	-	-	-	<0.1	-	-	-	-	-	-	0.3
Witch Flounder	-	<0.1	-	-	-	-	-	-	-	-	-	0.3
Atlantic Rock Crab	-	-	-	-	-	-	-	-	-	0.2	0.1	0.1
American Plaice	-	<0.1	<0.1	-	<0.1	<0.1	<0.1	<0.1	-	<0.1	<0.1	0.2
Yellowtail Flounder	-	<0.1	0.1	<0.1	0.1	0.1	<0.1	<0.1	<0.1	<0.1	-	0.2
Northern Propeller Clam	-	-	-	-	-	-	-	-	-	-	-	0.2
Smooth Skate	-	-	-	-	-	-	<0.1	<0.1	-	-	-	0.2
Sand	-	-	-	-	1.0	<0.1	-	-	-	-	-	-
Skates	-	0.4	<0.1	<0.1	0.1	0.1	-	-	-	-	-	0.1
Annelid	-	-	-	-	<0.1	-	-	0.7	-	-	-	-
Polychaete	-	-	-	-	0.1	0.5	-	-	-	-	-	-
Longhorn Sculpin	-	<0.1	<0.1	-	-	-	-	-	-	<0.1	<0.1	0.1
Silver Hake	-	-	-	-	-	-	-	-	-	-	-	0.1
Whelk Eggs	-	-	-	-	-	-	-	-	-	<0.1	<0.1	-
Foreign Articles/Garbage	-	-	-	-	-	-	-	-	-	-	-	0.1
Seasnail - <i>Liparis sp.</i>	-	-	-	-	-	-	-	-	-	-	-	0.1
Toad Crab – <i>Hyas sp.</i>	-	<0.1	-	<0.1	<0.1	0.1	<0.1	<0.1	-	-	-	<0.1
Sponges	-	-	-	-	-	<0.1	-	<0.1	-	-	-	<0.1
Coral	-	<0.1	<0.1	<0.1	-	<0.1	-	-	-	-	-	<0.1
Clams - Heterodonta	-	-	-	-	-	-	-	-	-	-	-	<0.1
Ribbed or Horned Sculpin	-	-	-	-	<0.1	<0.1	<0.1	<0.1	-	-	-	-



Table A4. International Observer Program data of percent (by weight) composition of discards in the offshore clam fishery on Grand Bank. Only species making up the top 99.99% (by weight) of the catch composition are shown. Numbers under the years are the total number of observed trips for that year. Vertical line breaks represent potential changes in observer protocols. Hyphen (-) denotes species not present in that year. Only data collected in the last 20 years is shown, for older data see DFO2020a.

Common Name	2007 1	2016 1	2018 1	2019 1	2020 1	2021 1
Shells	-	-	69.7	63.4	34.5	13.3
Sand Dollars	96.8	-	5.7	14.4	54.5	64.3
Sea Cucumbers	-	93.6	15.2	14.4	-	-
Stones and Rocks	-	-	6.2	5.2	4.3	1.2
Northern Propeller Clam	-	-	-	-	5.3	19.7
Whelk - Buccinidae	-	6.3	0.5	1.1	-	-
Sea Mouse	-	-	0.8	0.4	-	-
Clams - Heterodonta	-	-	0.5	0.4	-	-
Sea Star	-	-	0.4	0.2	0.2	0.4
Sea Urchin - Echinoidea	-	-	0.2	0.1	< 0.1	< 0.1
Hermit Crab - Paguridae	-	-	0.2	0.1	< 0.1	< 0.1
Sand Lances	-	-	< 0.1	< 0.1	0.5	0.4
Yellowtail Flounder	0.5	-	0.2	< 0.1	< 0.1	< 0.1
American Plaice	0.5	-	0.2	< 0.1	-	-
Snow or Queen Crab	1.4	-	-	< 0.1	0.3	0.2
Mussel	-	0.2	< 0.1	< 0.1	-	-
Seasnail - <i>Liparis sp.</i>	-	-	-	-	0.2	0.1
Thorny Skate	0.4	-	< 0.1	< 0.1	-	0.1
Thorny-headed Worms	-	-	-	0.1	< 0.1	< 0.1
Toad Crab - <i>H. coarctatus</i>	0.1	-	< 0.1	< 0.1	-	-
Spider Crab	-	-	< 0.1	-	-	-
Scallop	-	-	-	-	0.1	< 0.1
Witch Flounder	0.4	-	< 0.1	-	-	-
Sea Anemone	-	-	< 0.1	-	-	-
Toad Crab - <i>Hyas araneus</i>	-	-	-	< 0.1	-	-

**This Report is Available from the:**

Center for Science Advice (CSA)  
Maritimes Region  
Fisheries and Oceans Canada  
Bedford Institute of Oceanography  
1 Challenger Drive, PO Box 1006  
Dartmouth, Nova Scotia B2Y 4A2

E-Mail: [MaritimesRAP.XMAR@dfo-mpo.gc.ca](mailto:MaritimesRAP.XMAR@dfo-mpo.gc.ca)  
Internet address: [www.dfo-mpo.gc.ca/csas-sccs/](http://www.dfo-mpo.gc.ca/csas-sccs/)

ISSN 1919-3769

ISBN 978-0-660-45120-6 Cat. No. Fs70-7/2022-040E-PDF

© Her Majesty the Queen in Right of Canada, 2022



Correct Citation for this Publication:

DFO. 2022. Stock Status Update of Arctic Surfclam (*Mactromeris polynyma*) on Banquereau and Grand Bank to the end of the 2021 Fishing Season. DFO Can. Sci. Advis. Sec. Sci. Resp. 2022/040.

*Aussi disponible en français :*

*MPO. 2022. Mise à jour sur l'état du stock de mactre de Stimpson (Mactromeris polynyma) sur le Banquereau et le Grand Banc à la fin de la saison de pêche 2021. Secr. can. des avis sci. du MPO. Rép. des Sci. 2022/040.*