















ᐱᐁᑦᑏᑦᑏᑦ ᐃᑦᑏᑦᑏᑦᑏᑦ ᑏᑦᑏᑦᑏᑦᑏᑦ ᐃᑏᑦᑏᑦᑏᑦᑏᑦ 1750 kg (3850 lbs). ᐃᑦᑏᑦᑏᑦᑏᑦ ᐃᑦᑏᑦᑏᑦᑏᑦ ᐃᑦᑏᑦᑏᑦᑏᑦ ᐃᑦᑏᑦᑏᑦᑏᑦ ᐃᑦᑏᑦᑏᑦᑏᑦ ᐃᑦᑏᑦᑏᑦᑏᑦ ᐃᑦᑏᑦᑏᑦᑏᑦ ᐃᑦᑏᑦᑏᑦᑏᑦ ᐃᑦᑏᑦᑏᑦᑏᑦ 250 kg ᐃᑦᑏᑦᑏᑦᑏᑦ ᐃᑦᑏᑦᑏᑦᑏᑦ ᐃᑦᑏᑦᑏᑦᑏᑦ ᐃᑦᑏᑦᑏᑦᑏᑦ ᐃᑦᑏᑦᑏᑦᑏᑦ ᐃᑦᑏᑦᑏᑦᑏᑦ ᐃᑦᑏᑦᑏᑦᑏᑦ ᐃᑦᑏᑦᑏᑦᑏᑦ ᐃᑦᑏᑦᑏᑦᑏᑦ 1750 kg (3850 lbs), ᐃᑦᑏᑦᑏᑦᑏᑦ ᐃᑦᑏᑦᑏᑦᑏᑦ ᐃᑦᑏᑦᑏᑦᑏᑦ ᐃᑦᑏᑦᑏᑦᑏᑦ ᐃᑦᑏᑦᑏᑦᑏᑦ.

**ᐃᑦᑏᑦᑏᑦᑏᑦ ᐃᑦᑏᑦᑏᑦᑏᑦᑏᑦ ᐃᑦᑏᑦᑏᑦ**

ᑦᑏᑦᑏᑦ ᐃᑦᑏᑦᑏᑦᑏᑦ ᐃᑦᑏᑦᑏᑦᑏᑦ ᐃᑦᑏᑦᑏᑦᑏᑦ ᐃᑦᑏᑦᑏᑦᑏᑦ ᐃᑦᑏᑦᑏᑦᑏᑦ ᐃᑦᑏᑦᑏᑦᑏᑦ ᐃᑦᑏᑦᑏᑦᑏᑦ (ᐃᑦᑏᑦᑏᑦᑏᑦᑏᑦ 2005). ᐃᑦᑏᑦᑏᑦᑏᑦᑏᑦ ᐃᑦᑏᑦᑏᑦᑏᑦ ᐃᑦᑏᑦᑏᑦᑏᑦ ᐃᑦᑏᑦᑏᑦᑏᑦᑏᑦ, ᐃᑦᑏᑦᑏᑦᑏᑦᑏᑦ, ᐃᑦᑏᑦᑏᑦᑏᑦᑏᑦ ᐃᑦᑏᑦᑏᑦᑏᑦᑏᑦ ᐃᑦᑏᑦᑏᑦᑏᑦᑏᑦ ᐃᑦᑏᑦᑏᑦᑏᑦᑏᑦ ᐃᑦᑏᑦᑏᑦᑏᑦᑏᑦ (ᐃᑦᑏᑦᑏᑦᑏᑦᑏᑦ 2005). ᐃᑦᑏᑦᑏᑦᑏᑦᑏᑦ ᐃᑦᑏᑦᑏᑦᑏᑦᑏᑦ ᐃᑦᑏᑦᑏᑦᑏᑦᑏᑦ ᐃᑦᑏᑦᑏᑦᑏᑦᑏᑦ ᐃᑦᑏᑦᑏᑦᑏᑦᑏᑦ.

ᐃᑦᑏᑦᑏᑦᑏᑦᑏᑦ ᐃᑦᑏᑦᑏᑦᑏᑦᑏᑦ ᐃᑦᑏᑦᑏᑦᑏᑦᑏᑦ ᐃᑦᑏᑦᑏᑦᑏᑦᑏᑦ ᐃᑦᑏᑦᑏᑦᑏᑦᑏᑦ ᐃᑦᑏᑦᑏᑦᑏᑦᑏᑦ, ᐃᑦᑏᑦᑏᑦᑏᑦᑏᑦ ᐃᑦᑏᑦᑏᑦᑏᑦᑏᑦ ᐃᑦᑏᑦᑏᑦᑏᑦᑏᑦ ᐃᑦᑏᑦᑏᑦᑏᑦᑏᑦ ᐃᑦᑏᑦᑏᑦᑏᑦᑏᑦ ᐃᑦᑏᑦᑏᑦᑏᑦᑏᑦ ᐃᑦᑏᑦᑏᑦᑏᑦᑏᑦ ᐃᑦᑏᑦᑏᑦᑏᑦᑏᑦ ᐃᑦᑏᑦᑏᑦᑏᑦᑏᑦ.

**ᑦᑏᑦᑏᑦᑏᑦᑏᑦ**

This Science Advisory Report is from the January 10-11, 2011 Qasigiyaq Arctic Char assessment. Additional publications from this meeting will be posted on the [Fisheries and Oceans Canada \(DFO\) Science Advisory Schedule](#) as they become available.

DFO. 1999. Hornaday River Arctic Charr. DFO Science Stock Status Report D5-68 (1999).

DFO. 2005. Stock Assessment Report on Kipisa Arctic Char. DFO Can. Sci. Advis. Sec. Sci. Advis. Rep. 2005/028.

DFO. 2009. Assessing the Impact of Harvest on Kingnait Fjord Arctic Char in the Cumberland Sound Area of Baffin Island. DFO Can. Sci. Advis. Sec. Sci. Resp. 2009/013.

DFO. 2010. Exploratory Fishery Protocol – Nunavut and Northwest Territories anadromous Arctic Charr. DFO Can. Sci. Advis. Sec. Sci. Advis. Rep. 2010/22.

Loewen, T. N., D. Gillis, and R. F. Tallman. 2009. Ecological niches specialization inferred from morphological variation and otolith strontium of Arctic charr *Salvelinus alpinus* L. found within open lake systems of southern Baffin Island, Nunavut, Canada. J. Fish Biol. 75: 1473 – 1495.

Martin, Z. and R. F. Tallman. 2013. Qasigiyaq Lake Arctic Char Assessment. DFO Can. Sci. Advis. Sec. Res. Doc. 2013/018.

McGowan, D. K. 1985. Data from the Test Fisheries Conducted in the Baffin and Central Arctic Regions, Northwest Territories, 1980-1984. Can. Data Rep. Fish. Aquat. Sci. No. 531.

Moore, J. W. 1975. Distribution, movements and mortality of anadromous arctic char, *Salvelinus alpinus* L. in the Cumberland Sound area, of Baffin Island. J. Fish Biol. 7: 339-348.

Moore, J.W. and I.A. Moore 1974. Food and growth of arctic char, *Salvelinus alpinus* (L.) in the Cumberland Sound area of Baffin Island. J. Fish Biol. 6: 79-92.



Priest, H. and P.J. Usher. 2004. Nunavut Wildlife Harvest Study. Report prepared for the Nunavut Wildlife Management Board, Iqaluit, Nunavut, Canada.

VanGerwen-Toyne, M. and R. F. Tallman. 2010. Exploratory Fishery Protocol – Nunavut and Northwest Territories anadromous Arctic Charr. DFO Can. Sci. Advis. Sec. Sci. Advis. Rep. 2010/077.



በገናኔታዎች 2. ወይንም ሌሎች ልዩ ልዩ ስርዓቶች ለሌሎች ጋራ ስርዓቶች

ክፍለ-ዓመት ግንባታ	ድጋሚ ለገናኔታ	ድጋሚ ለሌሎች	ግንባታ ለድጋሚ		ክፍለ-ዓመት (exp.) ግንባታ ግንባታ (mm)	ግንባታ ግንባታ		ግንባታ ግንባታ (ሌሎች)	ግንባታ ለድጋሚ	ግንባታ ለድጋሚ
			139.7mm ግንባታ	exp. ግንባታ		139.7mm ግንባታ	exp. ግንባታ			
2003	ገንባታ 5	ገንባታ 8	48	156	38.1 – 101.6	1	4	443.7	204	ግንባታ
2004	ገንባታ 7	ገንባታ 8	57	72	38.1	2	2	116.3	129	ግንባታ
2006	ግንባታ 20	ግንባታ 21	140	44	38.1	4	2	156.8	184	ግንባታ
2007	ግንባታ 1	ግንባታ 4	121	60	38.1 – 101.6	7	3	558.1	181	ግንባታ
2009	ግንባታ 20	ግንባታ 23	72	120	38.1 – 101.6	4	4	295.7	192	ግንባታ
2010	ገንባታ 4	ገንባታ 5	64	147	38.1 - 101.6	1	2	57.4	211	ግንባታ





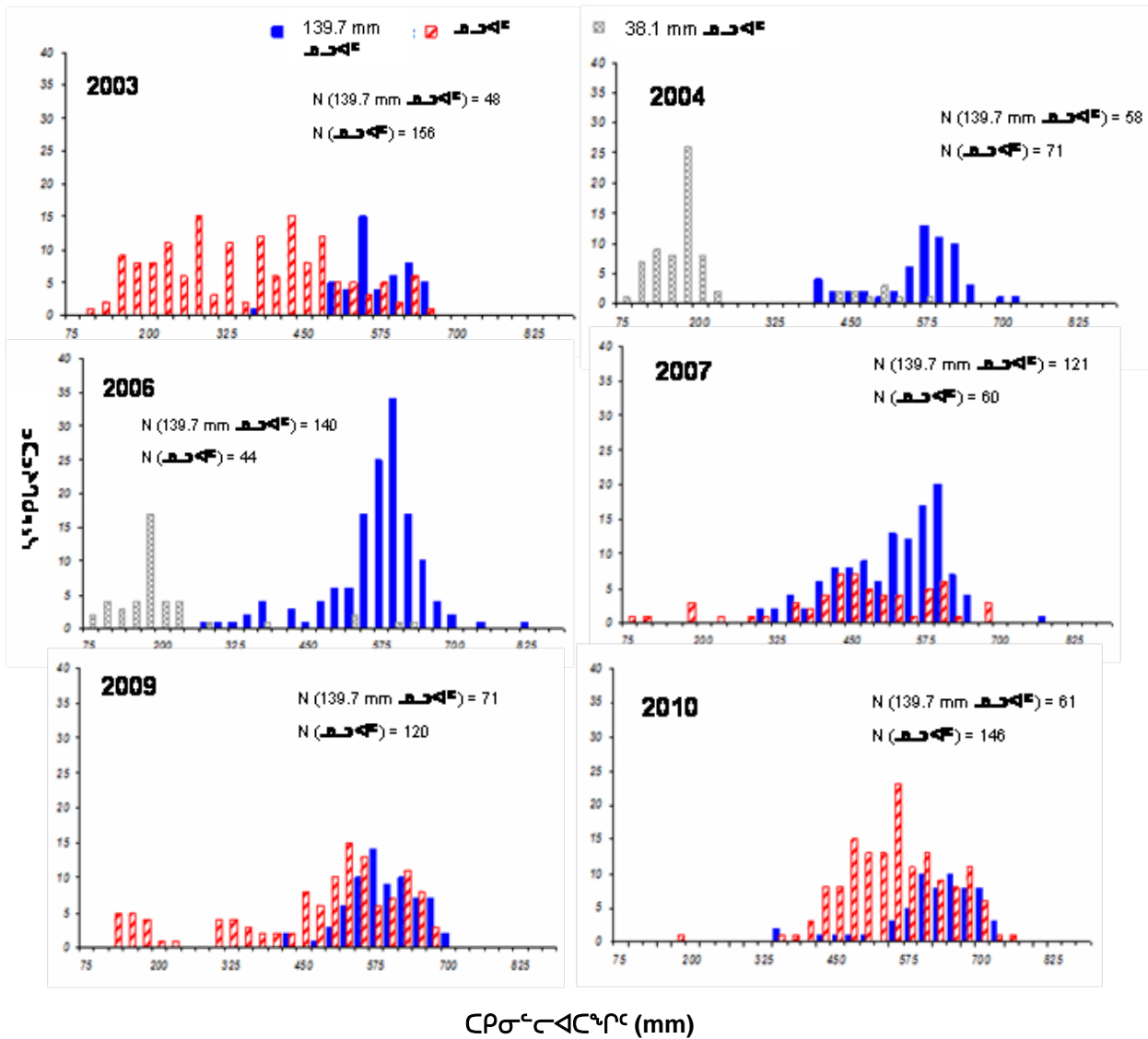


Figure 4. Length distribution of Arctic Char in 2003-2010. The distribution is shown for fish with a length of 139.7 mm (blue bars) and other fish (red hatched bars). n = number of fish.







**THIS REPORT IS AVAILABLE FROM THE:**

Centre for Science Advice (CSA)  
Central and Arctic Region  
Fisheries and Oceans Canada  
501 University Crescent  
Winnipeg, MB  
R3T 2N6

Telephone: 204) 983-5131

E-Mail: [xcna-csa-cas@dfo-mpo.gc.ca](mailto:xcna-csa-cas@dfo-mpo.gc.ca)

Internet address: [www.dfo-mpo.gc.ca/csas-sccs/](http://www.dfo-mpo.gc.ca/csas-sccs/)

ISSN 1919-5087

© Her Majesty the Queen in Right of Canada, 2013



*Inuktitut Atuinnaummijuq:*

ΔΛΓΔΓΔΓΔΓΔΓΔΓΔΓ. 2013. ᄋᄋᄋᄋᄋᄋᄋᄋ ᄋᄋᄋᄋᄋᄋᄋᄋ ᄋᄋᄋᄋᄋᄋᄋᄋ. ΔΛΓΔΓΔΓΔΓΔΓΔΓ Δᄋᄋᄋᄋ  
ᄋᄋᄋᄋᄋᄋᄋᄋᄋᄋᄋᄋᄋᄋᄋᄋ, ᄋᄋᄋᄋᄋᄋᄋᄋ. 2013/006.

*Also available in English:*

DFO. 2013. *Qasigiyat Lake Arctic Char Assessment.. DFO Can. Sci. Advis. Sec. Sci. Advis. Rep.*  
2013/006.

*Aussi disponible en français :*

MPO. 2013. *Évaluation de l'omble chevalier du lac Qasigiyat. Secr. can. de consult. sci. du MPO,*  
*Avis sci.* 2013/006.