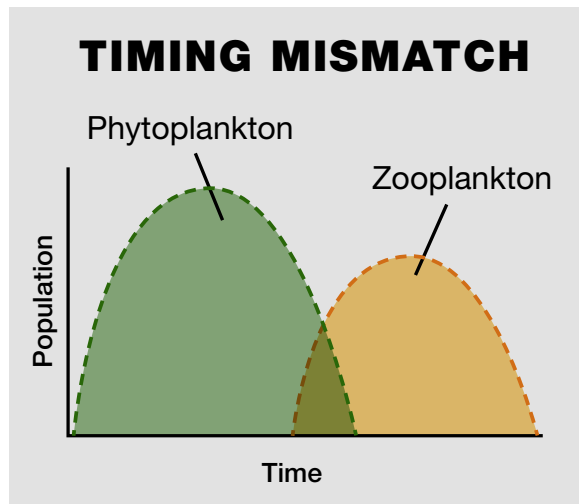
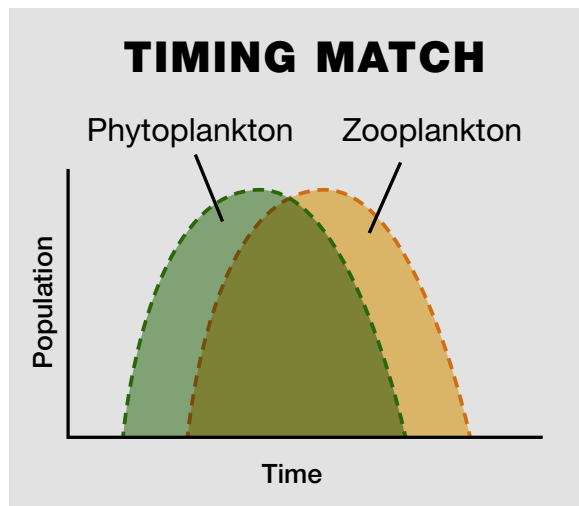


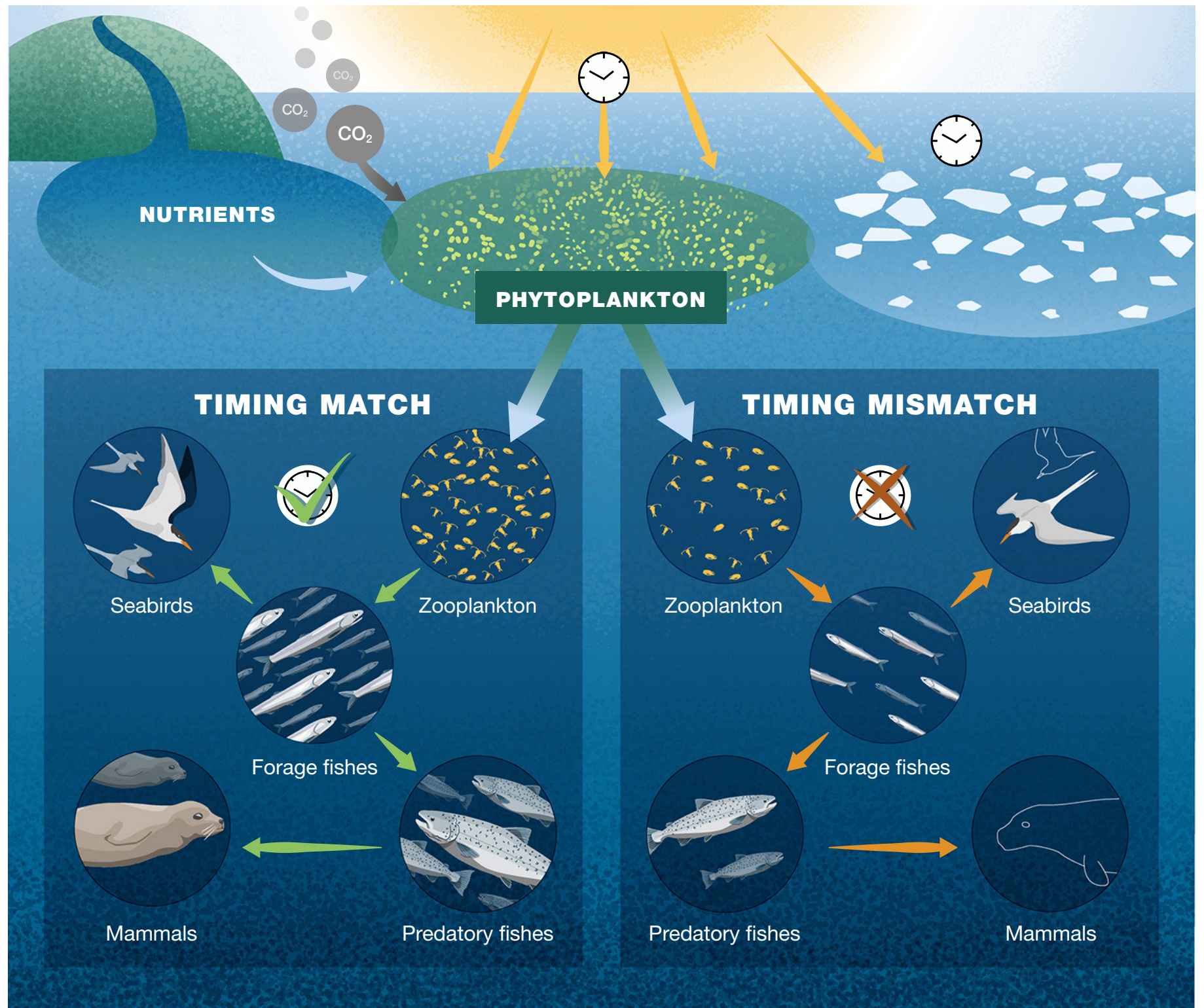
Timing is critical

The lifecycle of each species is timed to best use its food source — climate change is altering food web timing, especially primary productivity



A mismatch in timing of phytoplankton blooms has serious consequences for the rest of the food web

Ecosystem stressor



PACIFIC
Mismatch in timing with zooplankton food sources can affect juvenile herring and juvenile salmon

ARCTIC
Earlier sea ice melt is changing the timing and composition of algal blooms

ATLANTIC
Mismatch in timing of plankton is affecting forage fishes like capelin and herring. This affects the recovery of cod and the available food for seabirds.

