



Changes in sea-ice habitat

In the Arctic and Atlantic oceans, sea ice supports major life events for many species

 Ecosystem stressor

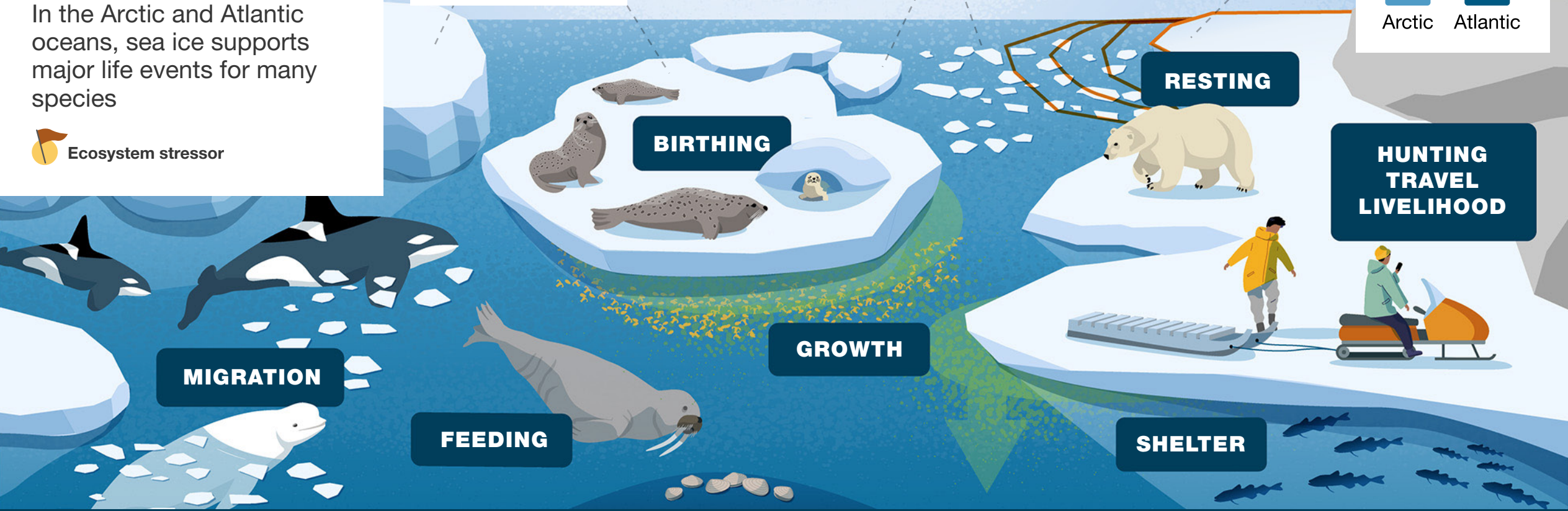
 **ARC**
Less old, thick ice, thinner seasonal ice each winter

 **ARC** **ATL**
Ice melts earlier and freezes later

 **ARC**
More mobile ice

 **ARC** **ATL**
Ice edge location is changing

Where is this happening?
ARC **ATL**
Arctic Atlantic



Fisheries and Oceans
Canada

Pêches et Océans
Canada

Canada