



UPDATE ON THE STATUS OF CUSK (*BROSME BROSME*) IN NAFO DIVISIONS 4VWX5Z FOR 2019

Context

Cusk, *Brosme brosme*, is caught as bycatch in certain directed fisheries. Most landings are in the groundfish longline fisheries. Commercial catch rates for Cusk declined after the 1980s. Changes to management measures (e.g., reductions to trip limits, overall caps, and bycatch percentages) may have contributed to this reduction in catch rates (and landings); however, it is thought the decline in Catch Per Unit Effort (CPUE) is also due to a decline in Cusk abundance (Harris and Hanke 2010). The extent of the decline in abundance is not known.

The Industry-DFO Halibut Fixed Station Longline Survey (Halibut Survey) catch per station has been accepted as the ongoing index for monitoring Cusk biomass. The Upper Stock Reference (USR) and Limit Reference Point (LRP) for Cusk were set at 26.6 kg and 13.3 kg per 1000 hooks, respectively (Harris et al. 2012). The 3-year geometric mean of the biomass index was accepted as the metric for monitoring Cusk status relative to the USR and LRP.

Cusk was assessed as threatened by the Committee on the Status of Endangered Wildlife in Canada (COSEWIC) in 2003 and later reassessed as endangered (COSEWIC 2012). In response to the 2003 assessment, the Governor in Council decided in 2013 not to add Cusk to the List of Wildlife Species at Risk set out in Schedule 1 of the *Species at Risk Act* (SARA; Minister of Justice, Canada 2013).

DFO's Resource Management Sector requests the 3-year geometric mean of the Cusk index from the Halibut Survey relative to the USR and the LRP annually. The information is used by DFO Resource Management as guidance in discussions with various industry stakeholders on recommendations for management measures.

The current 3-year geometric mean (2017–2019) of the Cusk biomass index remains above the LRP at 17.7 kg. Mean Cusk biomass has remained above the LRP since 2008.

This Science Response Report results from the Science Response Process of December 4–5, 2019, on the Stock Status Update of 4VWX5 Cusk.

Background

The Halibut Survey (Smith 2016), a longline survey that samples an area from the Grand Banks of Newfoundland, along the Scotian Shelf to Georges Bank, is considered to provide a useful index of trends in Cusk abundance in Northwest Atlantic Fisheries Organization (NAFO) Divisions 4VWX5 since 1999. Longline gear is an effective sampling tool for Cusk as demonstrated by the commercial fishery; over 90% of landings were made by the longline fleets (Harris and Hanke 2010).

The Halibut Survey is conducted annually, generally from May to July. Variations in the Halibut Survey fishing protocol include a shift to the use of larger hook size, larger geographic area that each 'station' encompasses, lack of consistency in stations sampled, and variation in soak time

Maritimes Region

and bait type. These variations are not accounted for in the Cusk biomass index, would contribute to the high variability, and could bias estimates.

Description of the Fishery

In the commercial groundfish fisheries, Cusk are caught primarily in summer and fall, with very limited landings in winter (Table 1). While the fishing year runs from April 1st through to March 30th of the following year, landings from April to November comprise between 93% and 98% of the fishing year landings from 2007 to 2015. Cusk landings have been declining, falling to 127 metric tonnes (mt) in 2018, and reaching only 93 mt by the end of November 2019. The steep decline in longline effort directed at Cod, Haddock and Pollock have likely contributed to this decline. Current Cusk bycatch from the longline fleet comes primarily from the Halibut directed fishery. Cusk landings are currently managed by means of bycatch caps and trip limits.

Table 1. Cusk landings in metric tonnes per calendar year from 2007 to 2018.

Year	4X5YZ	4VW	Total
2007	963	55	1018
2008	561	48	609
2009	535	38	573
2010	439	29	468
2011	444	34	477
2012	454	37	491
2013	338	44	382
2014	181	25	206
2015	151	38	189
2016	146	25	171
2017	112	27	140
2018	109	18	127

Analysis and Response

The 57 fixed stations from the Halibut Survey that have been sampled in all years since 1999 are used to calculate the survey indices for Cusk (Harris et al. 2012). In 2014, data from Station 159 was excluded due to serious damage to the gear that resulted in a non-typical catch. The long-term mean for station 159 is 13.2 kg.

The subset of stations includes some of the preferred habitat for Cusk, such as the deeper areas along the shelf edge, although only a few of these 57 stations are in the Gulf of Maine, the area of highest commercial landings. The catches at each station (standardized to Catch (kg)/1000 hooks), were used to calculate a biomass index. When the number of hooks fished was not recorded, it was assumed that the survey standard of 1000 hooks was fished in the single set. In some cases, stations were fished by 2 or 3 sets of fewer hooks that sum to roughly 1000 hooks. In these cases, all of these sets were included in calculating the standardized catch for the station.

The recent trend in the Halibut Survey (3-year running geometric mean) was used to determine the status of the Cusk biomass in relation to the reference points. The mean biomass index from

Maritimes Region

the Halibut Survey has been at or above the proposed LRP since 2008 (Figure 1). A high level of uncertainty is indicated by the wide confidence interval.

Cusk are a long-lived slow-growing species; any response to reduced fishing removals will take several years (around 10 years) as they recruit slowly to the adult population and fishery.

Indicator of Stock Status

The 3-year geometric mean (2017–2019) of the survey index for Cusk is 17.7 kg (Figure 1).

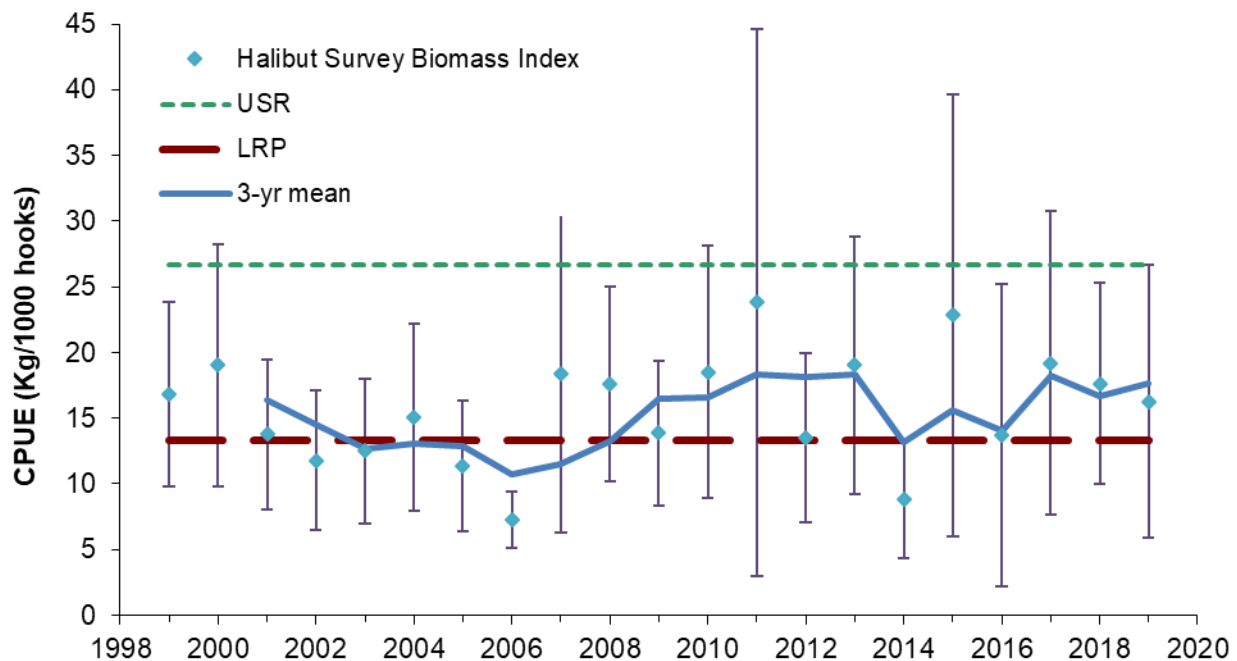


Figure 1. The green dashed reference line represents the Upper Stock Reference point, USR, the red dotted reference line represents the Limit Reference Point, LRP, the blue diamonds represent the biomass index for Cusk in the Halibut Survey, including the 95% confidence interval, and the heavy blue line represents the 3-year geometric mean of the index.

Conclusions

The 3-year geometric mean (2017–2019) of the Halibut Survey biomass index for Cusk remains above the LRP at 17.7 kg.

Contributors

Donald Clark (Lead)	DFO Science, Maritimes Region
Ryan Martin	DFO Science, Maritimes Region
Michelle Greenlaw	DFO Science, Maritimes Region
Melanie Barrett	DFO Science, Maritimes Region
Jamie Emberely	DFO Science, Maritimes Region
Quinn McCurdy	DFO Science, Maritimes Region

Maritimes Region

Virginia Noble	DFO Science, Maritimes Region
Rabindra Singh	DFO Science, Maritimes Region
Tara McIntyre	DFO Science, Maritimes Region
Daphne Themelis	DFO Science, Maritimes Region
Allan Debertin	DFO Science, Maritimes Region
Dave Hebert	DFO Science, Maritimes Region
Ellen MacEachern	DFO Science, Maritimes Region
Heath Stone	DFO Science, Maritimes Region
Catalina Gomez	DFO Science, Maritimes Region
Danielle Deonarine	DFO Science, Maritimes Region
Monica Finley	DFO Science, Maritimes Region
Fonya Irvine	DFO Science, Maritimes Region
Danielle Dempsey	DFO Science, Maritimes Region
Phil Greyson	DFO Science, Maritimes Region
Brad Hubley	DFO Science, Maritimes Region
Godana Lazin	DFO Science, Maritimes Region
Tania Davignon	DFO Science, Maritimes Region
Sara Deller	DFO Resource Management, Maritimes Region
Jennifer Saunders	DFO Resource Management, Maritimes Region
Penny Doherty	DFO Resource Management, Maritimes Region

Approved by

Alain Vézina
Regional Director of Science, DFO Maritimes Region
Dartmouth, Nova Scotia
Ph. 902-426-3490
Date: January 9, 2020

Sources of Information

- COSEWIC. 2012. [COSEWIC Assessment and Status Report on the Cusk \(*Brosme brosme*\) in Canada](#). Committee on the Status of Endangered Wildlife in Canada. Ottawa. x + 85 pp.
- DFO. 2014. [Update to the Recovery Potential for Cusk in Canadian Waters](#). DFO Can. Sci. Advis. Sec. Sci. Advis. Rep. 2014/048.
- Harris, L.E., and Hanke, A.R. 2010. [Assessment of the Status, Threats and Recovery Potential of Cusk \(*Brosme brosme*\)](#). DFO Can. Sci. Advis. Sec. Res. Doc. 2010/004.
- Harris, L.E., Somers, G., and Clark, D.S. 2012. [Reference Points for Cusk \(*Brosme brosme*\) in NAFO Divisions 4VWX5Z Under the Precautionary Approach Framework](#). DFO Can. Sci. Advis. Sec. Res. Doc. 2012/026: iii + 10 p.
- Minister of Justice, Canada. 2013. [Consolidation List of Wildlife Species at Risk \(Decisions Not to Add Certain Species\) Order](#). C.R.C., Species at Risk Act, Registration 2013-03-27, SI/2013-27. Ottawa, Canada.
- Smith, S.J. 2016. Review of the Atlantic Halibut longline survey index of exploitable biomass. Can. Tech. Rep. Aquat. Sci. 3180: v + 56 p

This Report is Available from the

Center for Science Advice (CSA)
Maritimes Region
Fisheries and Oceans Canada
Bedford Institute of Oceanography
1 Challenger Drive, PO Box 1006
Dartmouth, Nova Scotia B2Y 4A2

Telephone: 902-426-7070

E-Mail: MaritimesRAP.XMAR@dfo-mpo.gc.ca

Internet address: www.dfo-mpo.gc.ca/csas-sccs/

ISSN 1919-3769

© Her Majesty the Queen in Right of Canada, 2020



Correct Citation for this Publication:

DFO. 2020. Update of the Status of Cusk (*Brosme brosme*) in NAFO Divisions 4VWX5Z for 2019. DFO Can. Sci. Advis. Sec. Sci. Resp. 2020/020.

Aussi disponible en français :

MPO. 2020. Mise à jour sur l'état du stock de brosmes (*Brosme brosme*) dans les divisions 4VWX5Z pour 2019. Secr. can. de consult. sci. du MPO, Rép. des Sci. 2020/020.