

QH  
106.2  
.N8  
D6  
1972  
0.2

72 - 2372

Photographic catalogue of streams and rivers  
in the Northwest Miramichi River Basin,  
New Brunswick.

FOR REFERENCE USE ONLY  
DO NOT REMOVE FROM LIBRARY

C.L. Dominy



Resource Development Branch, Fisheries Service,  
Department of the Environment,  
Halifax, Nova Scotia

July, 1972

## INTRODUCTION

The photographs in this catalogue were taken in 1966 during an inventory survey of the Northwest Miramichi River in New Brunswick. A separate report (Dominy 1972)<sup>1</sup> contains the physical, chemical and biological data collected during the survey and provides some narrative interpretation of these data. In the present photographic catalogue, the descriptive captions under each of the 75 photos provide additional commentary on the physical features of the river basin.

The catalogue has separators along the right margin which divide the contents into 5 sections, viz: (1) Main Northwest Miramichi River, (2) tributaries to the main Northwest, (3) main and south Sevogle River, (4) tributaries to the main and south Sevogle River, and (5) North Sevogle River.

I wish to express my sincere thanks to Robert Dunfield who provided expert technical assistance on this inventory project and accompanied me throughout an arduous but rewarding field season. These were memorable days, often lightened by Bob's good sense of humour.

---

<sup>1</sup> Dominy, C.L. 1972. Fisheries inventory of the Northwest Miramichi River Basin, New Brunswick, with particular reference to Atlantic salmon. Dep. Environ., Fish. Serv., Halifax, Nova Scotia. Manuscript Report.



1. Main Northwest Miramichi River; at head of tide (Exmoor); 30 May 1966; downstream view.



2.

Main Northwest Miramichi River; mile 5.0; 9 July 1966; upstream view.



3.

Main Northwest Miramichi River; mile 14.5 (Wayerton); 28 October 1966; view across river.



4.

Main Northwest Miramichi River; mile 15.8;  
28 October 1966; downstream view.



5.

Main Northwest Miramichi River; mile 19.5;  
28 October 1966; upstream view; Robert  
Dunfield checking for salmon redds.



6.

Main Northwest Miramichi River; mile 23.6;  
27 October 1966; downstream view from  
mouth of Tomogonops River; note fish cage  
in river for field bio-assay.



7.

Main Northwest Miramichi River; mile 32.2;  
28 October 1966; downstream view; Elbow  
Pool area.



8.

Main Northwest Miramichi River; mile 50.6;  
28 October 1966; upstream view; Forty-two  
Brook area; Fisheries Research Board fish  
seining station here.



9.

Main Northwest Miramichi River; mile 62.7  
(North Branch area); 31 October 1966;  
Robert Dunfield grading salmon spawning  
gravel.



10.

Main Northwest Miramichi River; mile 63.7;  
13 July 1966; downstream view; area immediately below Fraser's Dam; formerly used as a pulp dumping site.



11.

Main Northwest Miramichi River; mile 63.7;  
13 July 1966; downstream side of Fraser's Dam.



12.

Main Northwest Miramichi River; mile 64.0;  
31 October 1966; downstream view; river frozen; Little Bald Mountain in background.



13.

Main, Northwest Miramichi River; mile  
67.8; 31 October 1966; upstream view;  
beaver dam.

14.



North Wildcat Brook; just above mouth;  
11 July 1966; upstream view from highway  
bridge.

15.



Little Sevogle River; mile 8.0; 10 June  
1966; upstream view.

16.



Little Sevogle River; mile 9.0; 12 July  
1966; downstream view at Anderson Road  
bridge; fish seining station.



17.

McNeal Brook; just above mouth; 28 June 1966; downstream view from bridge on Anderson Road.



18.

Lee Brook; just above mouth; 11 July 1966; downstream view.



19.

Portage River; mile 0.5; 19 July 1966, upstream view; fish seining station.



20.

Tozer Brook; mile 1.0; 11 July 1966;  
upstream view; crew sampling fish.



21.

Little River; mile 3.0; 16 August 1966;  
downstream view.



22.

Stoney Brook; mile 0.5; 22 July 1966;  
downstream view.



23.

South Branch; mile 0.3; 21 July 1966;  
upstream view; fish seining site.



24.

North Branch; at mouth; 22 August 1966;  
upstream view.



25.

North Branch; mile 1.0; 22 August 1966;  
downstream side of unused log driving  
dam.



26.

Main Sevogle River; at mouth; 19 October 1966; downstream view; E. M. Queeny's retaining wall on left.



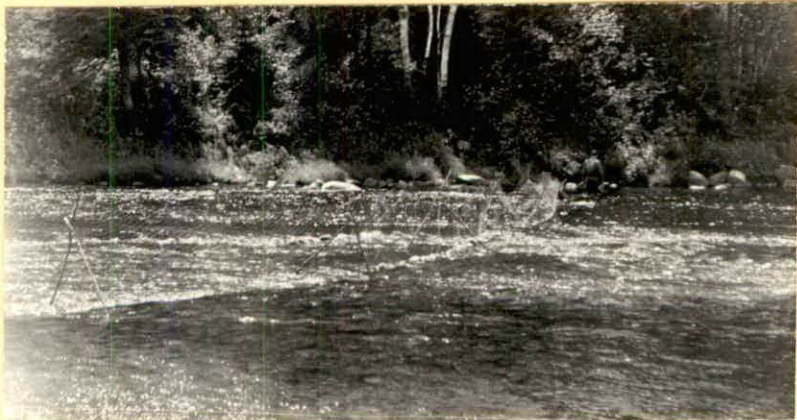
27.

Main Sevogle River; mile 3.0; 15 July 1966; downstream view; fish seining site.



28.

Main Sevogle River; mile 4.0; 26 October 1966; upstream view; Leslie Dominy measuring specific conductance.



29.

Main Sevogle River; mile 5.0; 4 July 1966;  
river flowing from right to left; note  
illegal chicken wire barrier.



30.

Main Sevogle River; mile 6.0; 4 July 1966;  
downstream view; note moose on left bank,  
center of photograph.



31.

Main Sevogle River; mile 8.0; 4 July 1966;  
upstream view.



32.

South Sevogle River at Square Forks; mouth of river; 4 July 1966; upstream view; note angler center of photograph; Main Sevogle River begins in center foreground.



33.

South Sevogle River; mile 1.0: downstream view.



34.

South Sevogle River; mile 2.0; 5 July 1966; upstream view.



35.

South Sevogle River; mile 4.0; 6 July 1966;  
upstream view; pool habitat.



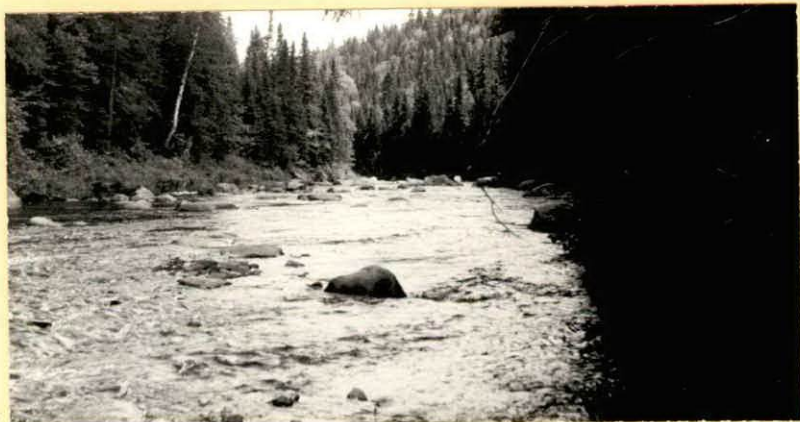
36.

South Sevogle River, mile 4.2; 6 July 1966;  
downstream view; narrow, short gorge.



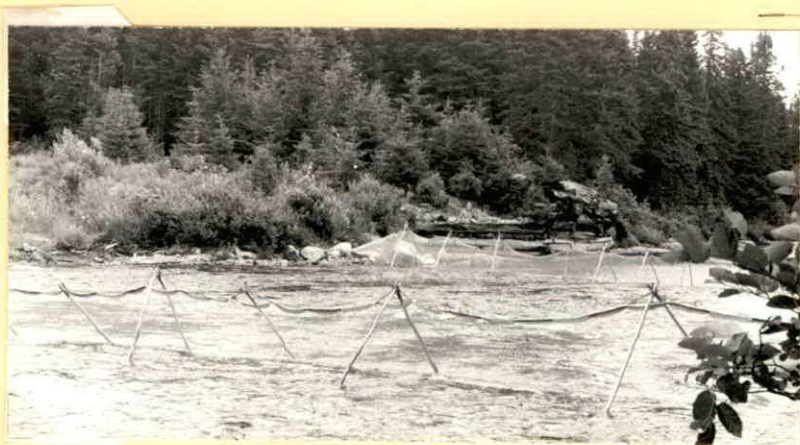
37.

South Sevogle River; mile 5.5; 6 July 1966;  
downstream view.



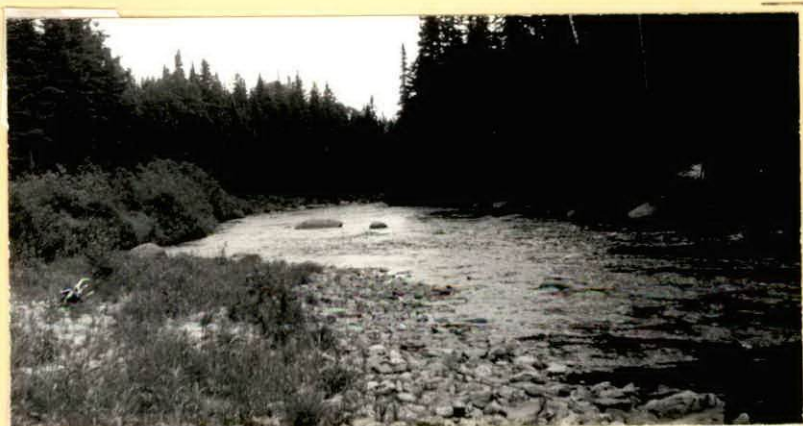
38.

South Sevogle River; mile 19.0; 8 July 1966; downstream view.



39.

South Sevogle River; mile 20.0; 14 July 1966; downstream view; fish seining site.



40.

South Sevogle River; mile 20.5; 8 July 1966; downstream view.



41.

South Sevogle River; mile 21.5; 8 July 1966; downstream view.



42.

South Sevogle River; mile 22.5; 8 July 1966; downstream view.



43.

South Sevogle River; mile 25.5; 2 August 1966; upstream view; trash and debris at "Miner's Bridge"; this is the limit of salmon distribution in this river.



44.

South Sevogle River; mile 26.0; 2 August 1966; upstream view.



45.

South Sevogle River; mile 28.0; 4 August 1966; upstream view.



46.

South Sevogle River; mile 29.0; 4 August 1966; upstream view; fine sand substrate.



47.

Mullin Stream; mile 2.5; 28 June 1966;  
downstream view from road bridge at  
"Narrows".



48.

Mullin Stream; mile 2.6; 13 July 1966;  
upstream view; fish seining site.



49.

Mullin Stream; mile 6.0; 26 October 1966;  
downstream view.



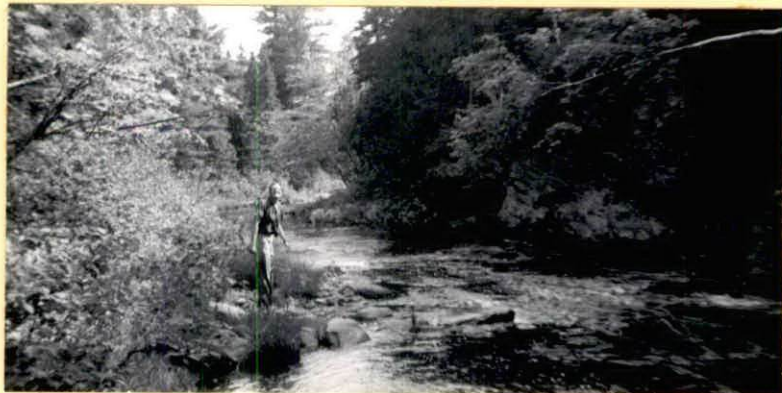
50.

Mullin Stream; mile 6.0; 28 June 1966;  
upstream view.



51.

Mullin Stream; mile 11.2; 30 June 1966;  
falls, eleven feet high; mouth of North  
Branch directly upstream from falls.



52.

Mullin Stream; mile 11.5; 30 June 1966;  
downstream view.



53.

Mullin Stream; mile 11.6; 30 June 1966;  
upstream view; rough water.



54.

Mullin Stream; mile 19.1; 28 June 1966;  
upstream view.



55.

Mullin Stream; mile 19.5; 28 June 1966;  
upstream view; beaver pond.

36.



Mullin Stream; mile 19.6; 28 June 1966;  
downstream view.

57.



Mullin Stream Lake; headwaters Mullin  
Stream; mile 20.5; remains of dam.

58.



Sheephouse Brook; at mouth; 15 August 1966;  
downstream view; South Sevogle River in  
background.



59.

Sheephouse Brook; mile 0.3; 15 August 1966;  
downstream view; loose gravel embankment  
and windfalls.



60.

Sheephouse Brook; mile 0.5; 15 August 1966;  
downstream view.



61.

Clearwater Stream; mile 4.5; 14 September  
1966; flow from left to right; motor  
vehicle ford and footbridge at mining  
exploration site.

62.



Clearwater Stream; mile 5.3; 5 August 1966;  
upstream view.

63.



Barracks Brook; mile 0.3; 8 July 1966;  
downstream view from roadbridge.



64.

North Sevogle River; at mouth (Square Forks); 25 October 1966; upstream view (see photograph 65 for different view).



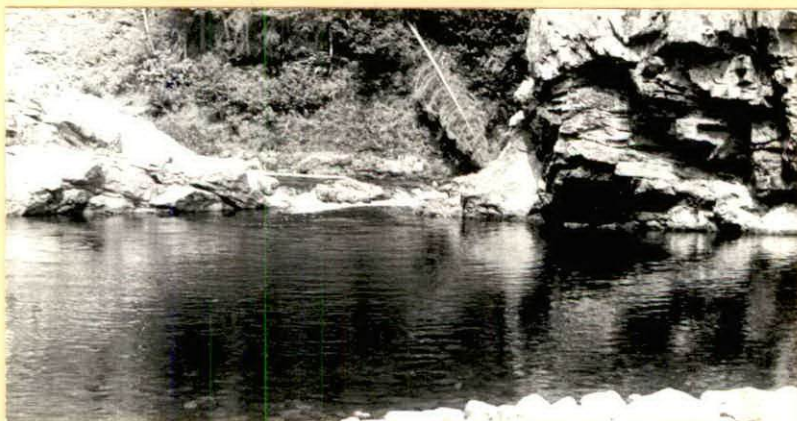
65.

North Sevogle River; at mouth (Square Forks); 25 October 1966; flow from left to right; one redd with two salmon in it can be seen exactly at the center; a second redd is located on the opposite bank downstream from center photo.



66.

North Sevogle River; mile 0.5; 9 August 1966; Square Forks Falls; the maximum drop is six feet.



67.

North Sevogle River; mile 4.0; 9 August 1966; upstream view; Cruckshank's Pool.



68.

North Sevogle River; mile 4.5; 9 August 1966; downstream view; Burchill Camp.



69.

North Sevogle River; mile 4.8; 9 August 1966; twenty-four grilse were present in this pool and some can be seen in the photograph.



70.

North Sevogle River; mile 6.5; 9 August 1966; downstream view.



71.

North Sevogle River; mile 13.0; 18 July 1966; upstream view from road bridge; fish seining site.



72.

North Sevogle River; mile 21; 14 September 1966; upstream view from Peabody Lake Road bridge.

73.



North Branch (North Sevogle); mile 0.3;  
11 August 1966; falls six feet drop.

74.



North Branch (North Sevogle); mile 0.5;  
11 August 1966; falls ten feet drop.

75



North Branch (North Sevogle); mile 2.0;  
11 August 1966; upstream view.