



## STOCK STATUS UPDATE OF UNIT 3 REDFISH

### Context

A 10,000 tonnes (t) Total Allowable Catch (TAC) was implemented for Unit 3 Redfish (4X+4Wdehkl) in 1994 based on the 1991 TAC for the previous management unit (4VWX), prorated by historical (1981-1990) catches in the Statistical Unit Areas that comprise Unit 3 (Atkinson and Power 1991). This TAC was maintained from 1994-1998 based on conclusions from a series of stock status reports, which indicated that stock conditions were not expected to decline in coming years (Branton and Halliday 1994, Branton 1995, 1996, 1997, 1998). In 1999, the TAC was reduced to 9,000 t due to lower catch rates in 4W and a shift in fishing effort from 4W to 4X (Branton 1999), and has remained at this level ever since. Conservation measures for Unit 3 Redfish currently include protocols for protecting small fish below the minimum size of 22 cm fork length (FL) (i.e. closure areas; small fish amounts not to exceed 15% of catch/trip), 100% dockside monitoring and electronic Vessel Monitoring System (VMS), mandatory hail out and hail in, and a target level of 10-20% at-sea observer coverage.

Information on the status of Unit 3 Redfish (i.e. distribution, abundance, biomass) from 1999-2002 was provided through a series of Canadian Science Advisory Secretariat (CSAS) Research Documents, which included a synopsis of the Fisheries and Oceans Canada (DFO) Summer Research Vessel (RV) Survey trends back to 1970 for selected groundfish stocks (e.g. Branton and Black 2002). Since 2009, the status of Unit 3 Redfish has been updated based on Maritimes Region research vessel survey trends in biomass and abundance, in a series of CSAS Science Responses (e.g. DFO 2017a). Following the development of biological reference points consistent with the precautionary approach (DFO 2012), the DFO Summer RV Survey Trends Science Responses from 2014 to 2017 have included plots of the mature biomass index for redfish > 22 cm FL relative to the Upper Stock Reference (USR; 80% of Biomass at Maximum Sustainable Yield [ $B_{msy}$ ] proxy) and the Limit Reference Point (LRP; 40% of  $B_{msy}$  proxy) (DFO 2017a). In 2015, a zonal peer review of the assessment framework for Units 1-3 Redfish (DFO 2017b) included a detailed review of Unit 3 Redfish stock status; however, this information has not yet been published, and there has been no new information available on the fishery for several years.

Resource management asked Science to review biological and fishery information on Unit 3 Redfish, to evaluate the current status of the stock relative to adopted reference points (DFO 2012), and report on bycatch of non-target species in the Unit 3 Redfish Fishery.

This Science Response Report results from the Science Response Process of December 6, 2018, on the Stock Status Update of Unit 3 Redfish.

### Background

#### Biology

Redfish, known commercially as Ocean Perch, occur on both sides of the Atlantic Ocean. They are found along the slopes of fishing banks, in deep channels and off the edge of the continental shelf at depths ranging from 100-700 m. In the northwest Atlantic, Redfish range from Baffin

Maritimes Region

---

Island in the north to the coast of New Jersey in the south. Two species of Redfish are found on the Scotian Shelf: Acadian Redfish (*Sebastes fasciatus*), which occur in the deep basins and at the edge of the continental shelf, and Deepwater Redfish (*Sebastes mentella*), which occur in deeper waters off the continental shelf and in the Laurentian Channel. These two species are difficult to distinguish visually and, as a result, both commercial and research survey catches are not separated.

Redfish are ovoviviparous as fertilization is internal and young are born live. Mating occurs in the fall (September-December) and females carry the developing young until release during spring and early summer (April-July). Larvae develop in surface waters and move to deeper waters as development progresses. Redfish are sexually dimorphic with females growing faster than males after Age 10. The average length at which 50% of redfish on Scotian Shelf are mature is 24-26 cm FL for females and 16-17 cm FL for males. They are slow growing (8-10 years to reach a size of 25 cm FL), long-lived, and characterized by a late age of sexual maturation (7-9 years to reach sexual maturity). This means that they are sensitive to overfishing and slow to recover from depletion (as evidenced by northern stocks). Recruitment success varies significantly, with long periods of low recruitment coupled with sporadic occurrences of strong year classes occurring at unpredictable and irregular intervals. Redfish are semi-pelagic and exhibit diel movement patterns rising off bottom at night to feed. Food consists primarily of pelagic crustaceans such as amphipods, copepods and euphausiids; fish become an important part of the diet as redfish increase in size.

### Description of the Fishery

Redfish on the Scotian Shelf were historically managed as a Northwest Atlantic Fisheries Organization (NAFO) Division 4VWX stock. In response to a new understanding of stock structure (Atkinson and Power 1991), a new management area for Unit 3 Redfish was implemented in the 1993 Groundfish Management Plan, which consists of Statistical Unit Areas 4X and 4Wdehkl (Figure 1). Genetic research has shown that redfish in Unit 3 are almost exclusively *S. fasciatus* and belong to a separate stock from *S. fasciatus* in Unit 1 (Gulf of St. Lawrence/northern Laurentian Channel) and Unit 2 (southern Laurentian Channel/Western Grand Bank) (Morin et al. 2004). Unit 3 Redfish are also considered to be separate from the Gulf of Maine/Georges Bank stock.

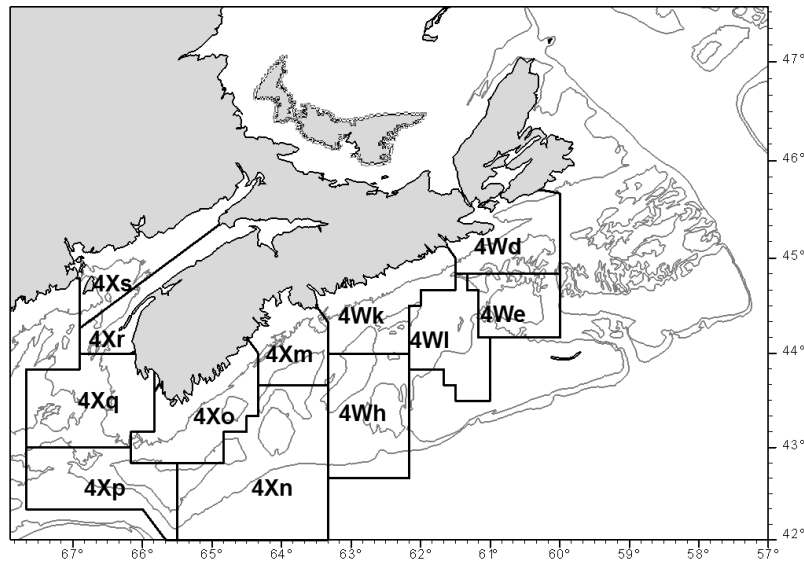


Figure 1. Unit 3 Redfish Management Area 4X+4Wdehkl.

Within the Unit 3 management area, the main geographic areas fished over the past 5 years include Crowell and Jordan basins (4Xpq), the Scotian Shelf slope (4Xn, 4Wh), the Sambro Bank area (4Xm, 4Wk), and the northern edge of La Have Basin (4Xm). In some years, fishing activity has also occurred on Browns and Baccaro banks, La Have Bank and in Emerald Basin. Redfish are fished primarily using bottom trawls with small mesh cod ends (110-115 mm diamond mesh) and are sold as fillets or used for lobster bait.

Two areas in 4X have been closed to small mesh gear due to persistent catches of undersized redfish, one in 4Xo (“Bowtie Closure”, implemented in 1995) and the other in 4Xmn (“Second Closure”, implemented in 2013). Redfish  $\leq 22$  cm FL are considered immature and there are restrictions on the proportion of these small fish in the landed catch per trip (i.e. no more than 15%).

Total landings of Unit 3 Redfish reached 18,000 t in the early 1970s when foreign fleets (mostly from the USA) fished on the Scotian Shelf (Table 1; Figure 2). Catches by foreign fleets declined after implementation of the 200 mile limit in 1977 and dropped off entirely by the early 1990s. Canadian landings have averaged 4,000 t since 1970, peaking at 9,000 in 1974 and more recently at 8,000 t in 2012. During the 1970s, landings were dominated by catches in 4W, but after 1980 they shifted to 4X, which has accounted for about 86% of landings from 1980 to 2018. Within 4X, there was a shift in landings from 4Xmno to 4Xpq in the late 1990s, probably to reduce capture of small fish. The TAC has been 9,000 t since 2000; landings have not exceeded this amount and were 4,571 t in 2017 and as of December 14<sup>th</sup> are currently at 3,587 t (Fishing Year Landings for 2018/2019 = 3,405 t). Quarter 2 accounts for most landings (47%), followed by quarter 3 (28%), quarter 4 (14%) and quarter 1 (11%).

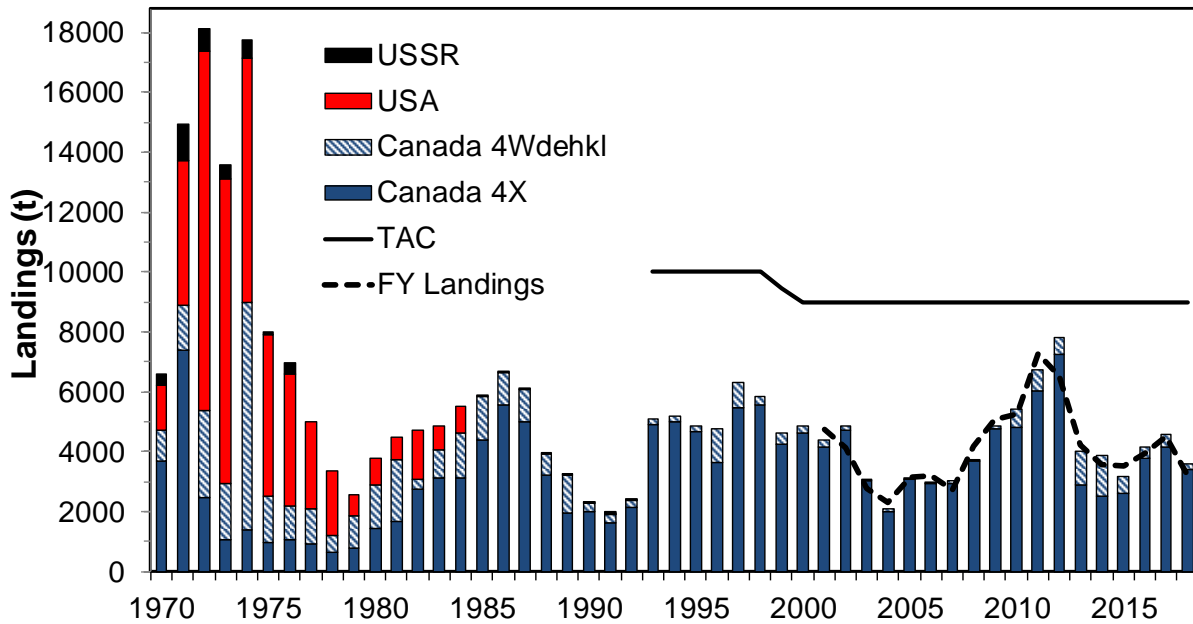
**Maritimes Region**

*Table 1. Total reported Canadian and foreign landings (metric tonnes) of Unit 3 Redfish from 1970-2018. Ten-year annual average landings represent 1970 to 2009. Dash (-) = not applicable.*

	Year(s)	Canada		USA		USSR	Other	Total	TAC	FY <sup>1</sup>
		4X	4Wdehkl	4X	4Wdehkl					
Decadal Average	1970-79	2042	2036	2966	2254	394	92	-	-	-
Decadal Average	1980-89	3229	1175	510	0	1.8	2.3	-	-	-
Decadal Average	1990-99	3932	393	5	0	26	28	-	-	-
Decadal Average	2000-09	3595	100	0	0	0	3	-	-	-
Annual	2010	4807	608	0	0	0	0	5415	9000	5246
Annual	2011	6052	685	0	0	0	0	6736	9000	7268
Annual	2012	7245	562	0	0	0	0	7807	9000	6510
Annual	2013	2914	1108	0	0	0	0	4022	9000	4240
Annual	2014	2524	1356	0	0	0	0	3880	9000	3579
Annual	2015	2591	593	0	0	0	0	3184	9000	3516
Annual	2016	3767	384	0	0	0	0	4151	9000	3948
Annual	2017	4173	398	0	0	0	0	4571	9000	4533
Annual	2018 <sup>2</sup>	3390	197	0	0	0	0	3587	9000	3405

<sup>1</sup> Fishing Year Landings (April 1<sup>st</sup> - March 31<sup>st</sup>)

<sup>2</sup> Landings for 2018 are preliminary, from the Maritimes Fisheries Information System (MARFIS) as of December 14<sup>th</sup>.



*Figure 2. Unit 3 (4X+4Wdehkl) Redfish landings (metric tonnes) from 1970-2018 (histograms = calendar year; dashed black line = fishing Year). The solid black line is the Canadian Total Allowable Catch (TAC).*

**Assessment Framework**

While no formal modelling approach has been developed to determine stock status, empirically determined reference points have been calculated for Unit 3 Redfish using DFO Summer RV Survey data for mature biomass (> 22 cm FL) (DFO 2012). A proxy for  $B_{msy}$  (73,000 t) was calculated as the survey mean mature biomass from 1970-2010. Forty percent (40%) of the

$B_{msy}$  proxy was presented as the LRP (29,000 t) and 80% as the USR (58,000 t). The mature biomass index from the DFO Summer RV Survey (smoothed using 5-year arithmetic moving average) is used to determine current stock biomass in relation to biological reference points. In addition, a target Removal Reference (RR=0.068) was proposed based on the maximum Relative Fishing Mortality (Relative F) that would not result in a reduction in population biomass. This value, also known as the replacement ratio, was determined using an “index based” assessment methodology (NEFSC 2002) using a 3-year smoothed moving average for the DFO Summer RV Survey mature biomass index based on data for 1970-2010 (DFO 2012). The RR was updated to include data from 1970-2018 for comparison with the original value.

## Analysis and Response

### DFO Summer Research Vessel Survey

A stratified-random bottom trawl survey of the Scotian Shelf/Bay of Fundy has been conducted in July and August since 1970 and, with the exception of 2018, has provided complete coverage of the entire Unit 3 stock area (defined as strata 456, 458-495 in Branton and Halliday 1994). Reduced coverage in 2018 represented about 75% of the Unit 3 survey area (i.e. strata 460, 461, 465 and 470-495 were sampled). Mature redfish biomass was calculated using stratified total abundance at size (for lengths > 22 cm FL) and the length-weight relationship for combined sexes calculated using length and weight data from 1992-2017 (time period for electronic balances).

Total and mature biomass declined from the late 1970s to the early 1990s, was low but variable through to the mid-2000s, then increased to higher levels from 2007-2016 (Figure 3, upper panel). Much of the total biomass in 2008-2009 (44-55%) and 2011-2012 (36-40%) was comprised of immature fish ( $\leq 22$  cm FL), which may indicate earlier periods of strong recruitment.

Not all strata in 4W were sampled during the 2018 DFO Summer RV Survey; therefore, the biomass index time series for 1970-2018 was recalculated using only the strata covered in the 2018 survey (460, 461, 465, 470-495) (Figure 3, lower panel). Since most of the Unit 3 Redfish biomass occurs in the NAFO Area 4X (Strata 470-495), the trajectories for total and mature biomass indices are almost identical for all of the Unit 3 strata compared to the strata sampled in 2018. Including the 2018 survey results indicates that total and mature biomass has declined since 2016 and is currently at a level comparable to the 1990s.

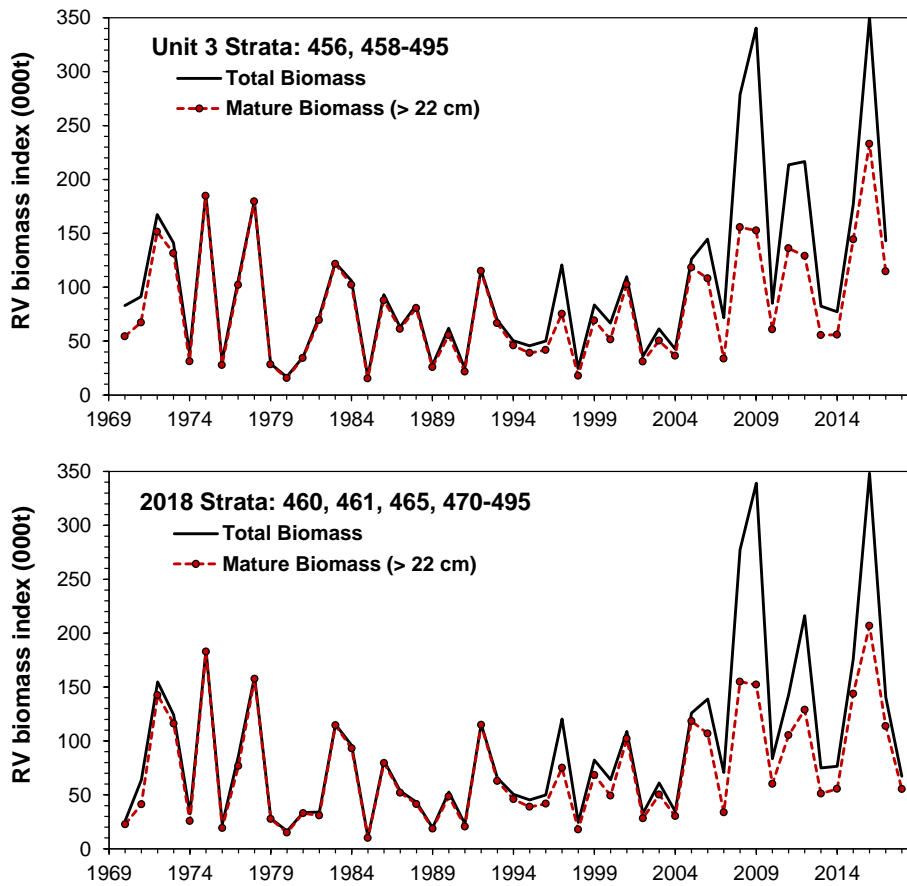


Figure 3. The DFO Summer RV survey total biomass and mature (> 22 cm FL) biomass indices ( $t \times 10^3$ ) for Unit 3 Redfish Strata (456, 458-495) from 1970-2017 (top panel), and recalculated using only the strata sampled in 2018 (460, 461, 465, 470-495) for 1970-2018.

There was a decline in the DFO Summer RV Survey total abundance at length from 2017 to 2018 (Figure 4). The short-term median abundance index (2007-2016) was higher than the long-term median abundance index (1970-2016) but peaked at smaller size (i.e. 22 cm versus 25 cm FL), indicating higher abundance of smaller fish during the short-term period. The 2018 abundance at length was higher for most sizes compared to long term-median but was below the short-term median for sizes < 26 mm FL, reflecting the recent drop in abundance.

Maritimes Region

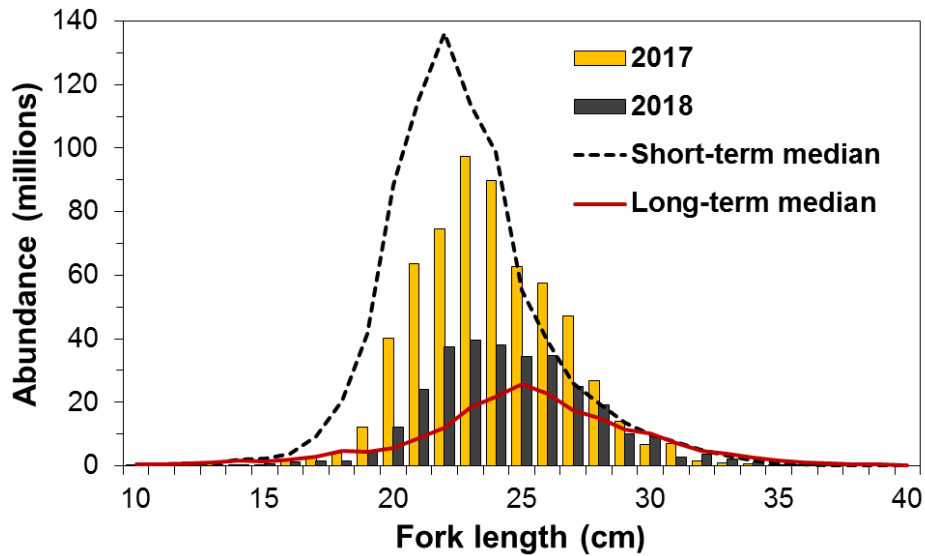


Figure 4. Length frequency indices for Unit 3 Redfish from DFO Summer RV surveys, 1970-2018. Black bars represent the numbers in millions at length from the 2018 survey; yellow bars represent numbers in millions at length from the 2017 survey. The red line represents the long term median abundance at length (1970-2016) and the dashed black line is the short-term median abundance at length (2007-2016).

**Condition**

Fulton’s  $K$  (weight/length<sup>3</sup>) was calculated separately for males 23-40 cm FL and females 23-45 cm FL. During the 1970s and 1980s,  $K$  was higher for both sexes, but because spring balances were used during this period it is not clear how precise this data is (Figure 5). For 1992-2018 (the time period for electronic balances),  $K$  has generally been above or below the 1992-2018 average for males, but it has shown a declining trend since 2009 for females. The reason for this is unclear, but warmer water temperatures in recent years may result in more spawning before the survey takes place. Similar declines in condition have been observed for other Scotian Shelf species such as Silver Hake (Stone et al. 2013), Pollock (Stone 2010) and Haddock (Stone and Hanson 2014).

Maritimes Region

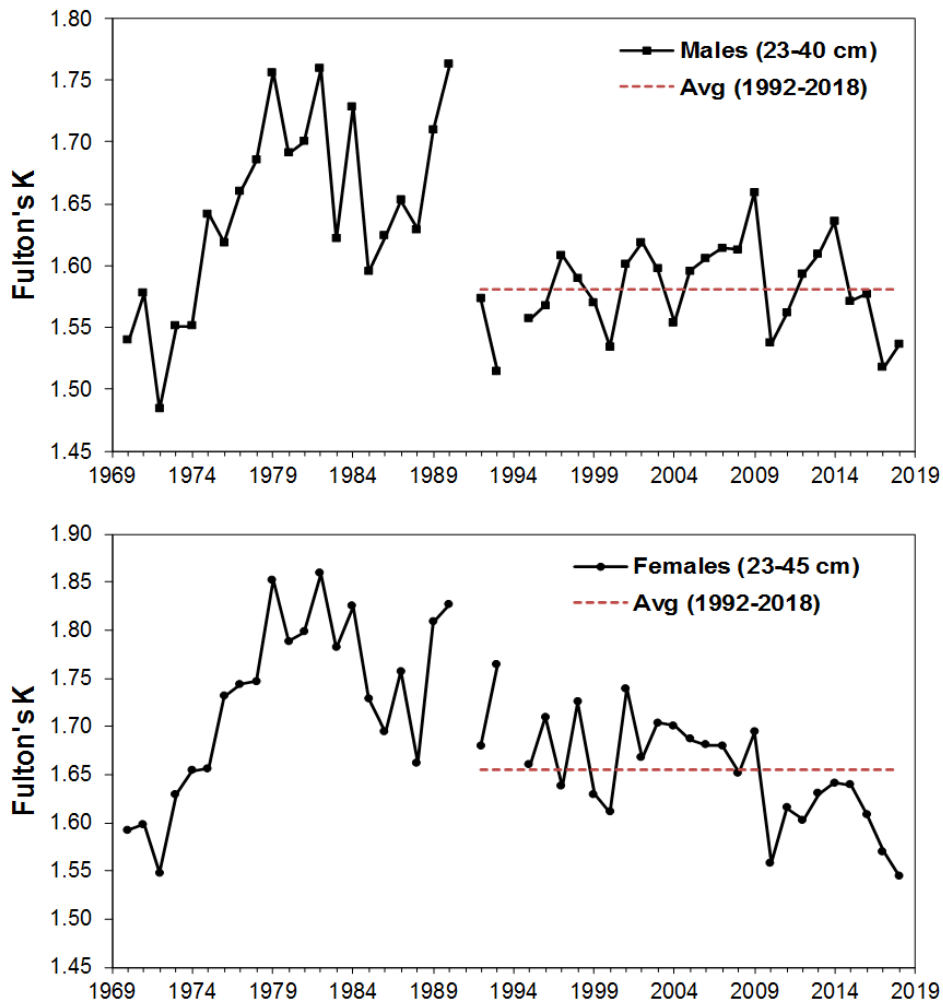


Figure 5. Fulton's Condition factor ( $weight(g)/length(cm)^3$ ) for male (23-40 cm FL; upper panel) and female (23-45 cm FL; lower panel) redfish from DFO Summer RV Survey length and weight data for 1970-2018.

**Fishery Average Size and Percent  $\leq 22$  cm FL**

The average size of redfish (weighted mean length calculated from the fishery catch at size) declined from the mid-1970s to the late 2000s but has been increasing since 2011 (Figure 6). The percentage of small fish in the catch exceeded the 15% tolerance level from 1990-2002 and more recently from 2007-2014. Implementation of the "Second Closure" area (4Xmn) in 2013 may have helped to reduce the catch of small redfish ( $\leq 22$  cm FL) in recent years, leading to an increase in average size since 2011 along with growth of cohorts in the fishery.



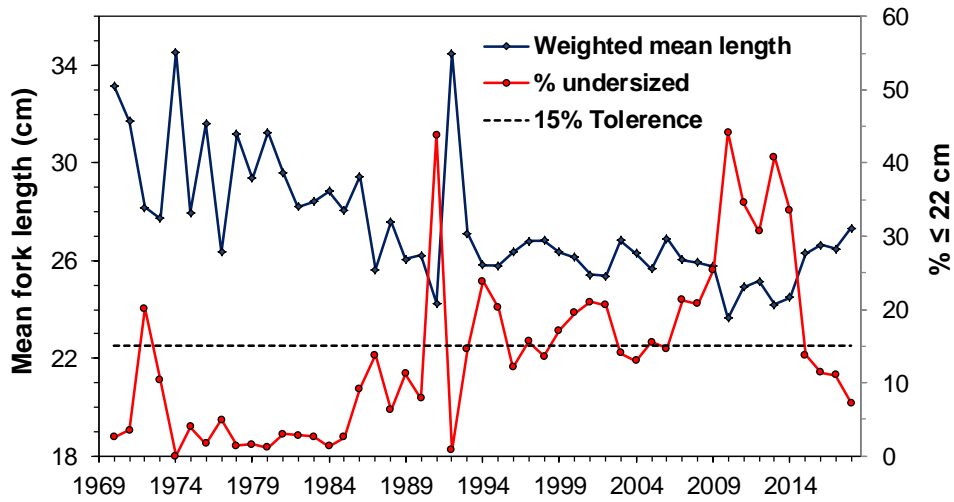


Figure 6. Weighted mean length (cm) of Redfish from the commercial fishery catch at size and percentage of catch at size  $\leq 22$  cm FL for 1970-2018. The dashed line indicates the 15% tolerance level.

### Reported Landings of Redfish and Bycatch Species

The 4X component of the Unit 3 management unit is more of a mixed species fishery than 4W, so bycatch landings are presented separately for both areas (Figure 7). Bycatch landings for 2009-2018 from the MARFIS commercial landings database averaged 23% of total landed catch in the 4X fishery compared to 10% in 4W. The most common landed bycatch species in 4X is Pollock (9%), followed by Haddock (7%), White Hake (3%) and Atlantic Cod (1%). Pollock is also the main bycatch in 4Wdehkl but at a lower level (6%), followed by Monkfish (2%), non-specified skates (1%) and White Hake (1%).

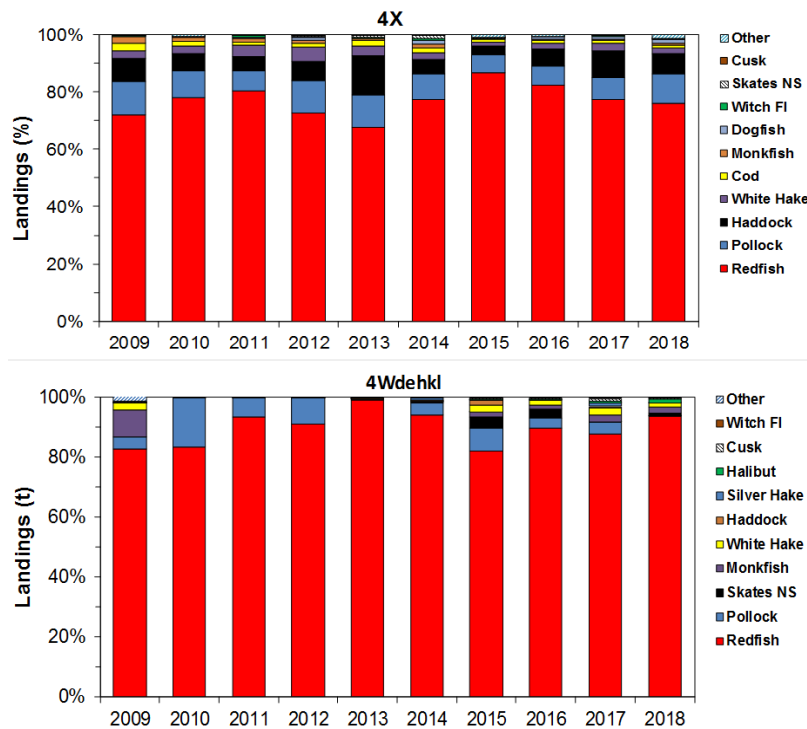


Figure 7. Percentage of landings by species from the Unit 3 Redfish fisheries in 4X (upper panel) and 4Wdehkl (lower panel), 2009-2018.

### Observer Coverage and Bycatch

Estimates of at-sea observer coverage levels for the redfish fishery use data from the Observer Program Database and the MARFIS Commercial Landings Database for mobile gear with 110-115 mm diamond mesh cod ends (89% of total landings). On average, about 7% of Redfish landings and trips have been observed over the past 5 years (Table 2). With the exception of 2015, coverage has been below the 10-20% target level proposed by Resource Management.

Table 2. Percent observer coverage (observed redfish catch/total redfish landings; observed redfish trips/total redfish trips) for the directed mobile gear redfish fishery in Unit 3, 2014-2018.

Year	Total Landings (t)	Total Trips	Observed Redfish Catch (t)	Observed Redfish Trips	Observed Redfish Land (%)	Observed Redfish Trips (%)
2014	3312.6	133	91.8	3	2.8	2.3
2015	2832.8	106	302.8	12	10.7	11.3
2016	3534.9	165	207.9	10	5.9	6.1
2017	3775.7	214	342.7	20	9.1	9.3
2018	2927.5	144	120.7	7	4.1	4.9
<b>Avg (2015-2018)</b>					<b>6.5</b>	<b>6.8</b>

Observer data from 2000-2018 (342 trips in 4X and 72 trips in 4Wdehkl) indicates that 92% and 97% of the total observed catch (kept + discarded) from Unit 3 Redfish trips is retained in 4X and 4Wdehkl, respectively. At-sea observers recorded similar proportions of retained bycatch as reported in the commercial landings database. Redfish (75%), Pollock (9%), Haddock (4%),

---

**Maritimes Region**

White Hake (2%) and Atlantic Cod (1%) are reported as the main species retained in 4X compared to Redfish (82%), Pollock (10%) and Haddock (2%) in 4Wdehkl. Total discard amounts are low and represent 8% of observed catches in 4X and 3% in 4Wdehkl for 2000-2018. Discarded species in 4X include Spiny Dogfish (6%), American Lobster (0.4%) and Basking Shark (0.1%), and in 4Wdehkl include small Redfish (0.7%), Spiny Dogfish (0.6%), small Pollock (0.5%) and Barndoor Skate (0.4%).

**Harvest Control Rule**

The smoothed (5-year moving average) mature biomass index from the DFO Summer RV Survey is used to determine the current stock biomass in relation to biological reference points. Management Strategies for Unit 3 Redfish outlined in the 2017 Groundfish Integrated Fisheries Management Plan (IFMP) for the Maritimes Region indicate that a TAC may be set to achieve a maximum 9% exploitation rate based on the index when it is above the USR. When mature biomass is below the LRP, the TAC is reduced so that the exploitation rate does not exceed 3% of the index.

Since not all Unit 3 strata in 4W were sampled during the 2018 DFO Summer RV Survey, the mature biomass index time series for 1970-2017 was calculated for all of the Unit 3 strata (456, 458-495) and then recalculated for the entire time series (1970-2018) using only the strata covered in the 2018 survey (460, 461, 465, 470-495) (Figure 8). Both smoothed mature biomass indices have similar trajectories and have never fallen below the LRP. The stock has been above the USR (58,000 t) since 2004 and above  $B_{msy}$  (73,000 t) since 2007, and it is currently in the Healthy Zone.

Relative F is calculated as Fishery Landings/DFO Summer RV Survey mature biomass index (smoothed with 3-year moving average) (Figure 9). The highest values occurred in early-1970s, mid-1980s and late-1990s when landings were high relative to the mature biomass index. With increasing mature biomass, Relative F has been at or below the 1970-2010 RR (0.068) since 2003 and was estimated at 0.027 for 2017 and 0.024 for 2018, indicating that current exploitation is low. When the RR is recalculated using landings and the mature biomass index updated for the entire DFO Summer RV Survey time series (1970-2018), RR=0.056 and Relative F has been below this level since 2012.

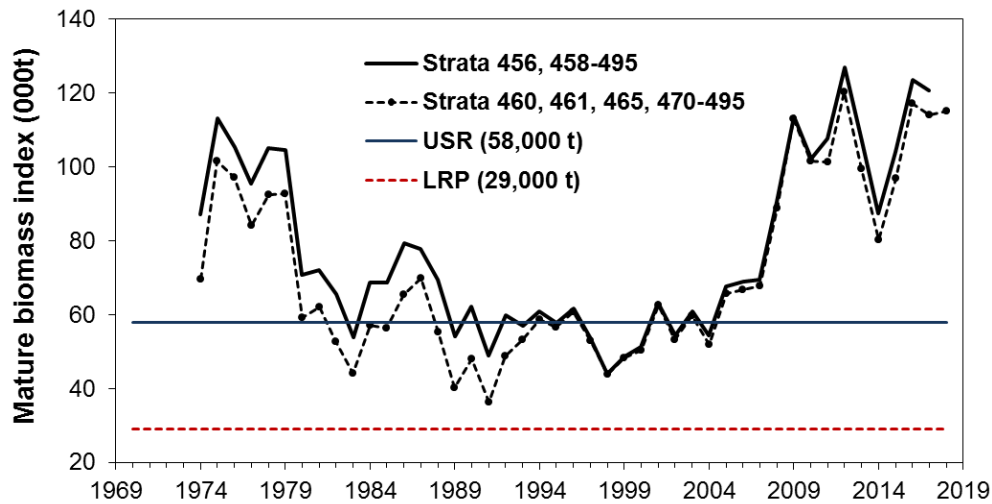


Figure 8. Mature biomass index (5-year smoothed moving average) calculated for Unit 3 Redfish strata (456, 458-495; 1970-2017) and a reduced number of strata covered in 2018 (460, 461, 470-495; 1970-2018). Solid blue line = Upper Stock Reference (58,000 t). Dashed red line = Limit Reference Point (28,000 t).

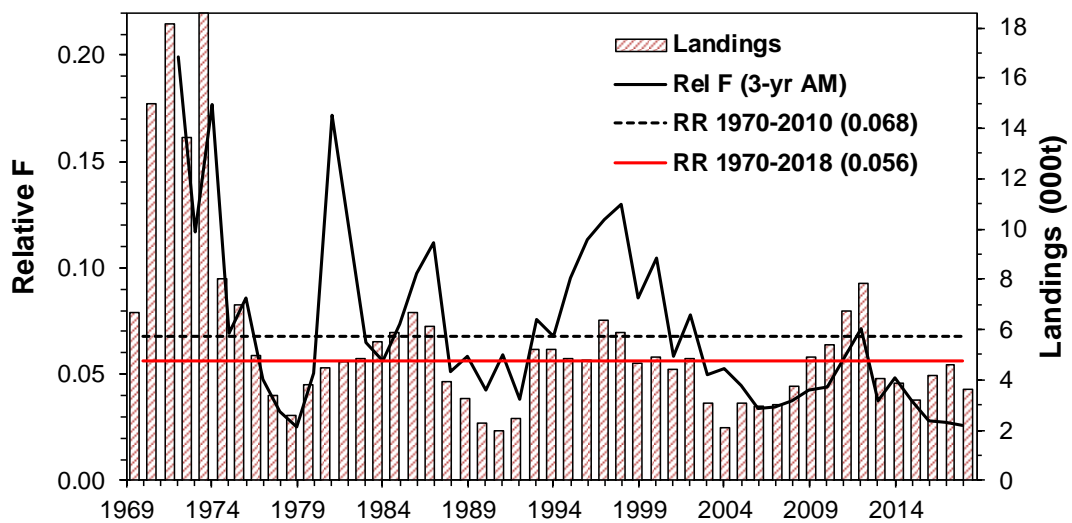


Figure 9. Relative Fishing Mortality (Fishery Landings/Survey Mature Biomass Index with 3-year smooth; black line) and total landings (000 t; red histograms) for Unit 3 Redfish, 1970-2018. The Removal Reference (RR) calculated using the index method is shown for 1970-2010 (dashed black line) and 1970-2018 (solid red line).

## Conclusions

The TAC for Unit 3 Redfish has been 9,000 t since 2000 and total landings have generally been less than half this amount over the past 18 years. The average size of redfish in the fishery catch at length has been increasing since 2011 and the percentage of immature fish ( $\leq 22$  cm FL) in the catch at length has declined to  $< 15\%$  over the past four years.

The 4X component of the Unit 3 management unit is more of a mixed species fishery than 4Wdehkl, with bycatch landings for 2009-2018 averaging 23% of total landed catch in 4X

**Maritimes Region**

---

compared to 10% in 4Wdehkl. Pollock is the most commonly landed bycatch species in both areas. About 7% of redfish landings and trips have been observed over the past 5 years, with observers recording similar proportions of retained bycatch as reported in the commercial landings database. Discard amounts are low and estimated to be 8% of total observed catches in 4X and 3% in 4Wdehkl for 2000-2018. The main discarded species are Spiny Dogfish, American Lobster, Basking Shark and Barndoor Skate, all at low levels.

Although mechanical problems with the survey vessel in 2018 led to incomplete coverage of Unit 3 strata for the first time since 1970, the mature biomass index calculated for the entire time series (1970-2018) based on reduced Unit 3 strata coverage in 2018 indicates that the index has never fallen below the LRP and that the stock has been above the USR since 2004. Relative F has been below the 1970-2010 RR (0.068) since 2002 and the updated 1970-2018 RR (0.056) since 2012. In 2017 and 2018, Relative F is estimated to be 0.027 and 0.024, respectively, indicating that the current exploitation rate is low. The status of Unit 3 Redfish is determined solely by the mature biomass index generated from the DFO Summer RV Survey and requires complete annual coverage of the Unit 3 stock area strata in order to be reliable.

**Contributors**

<b>Name</b>	<b>Affiliation</b>
Heath Stone (Lead)	DFO Science, Maritimes Region
Brendan Wringe	DFO Science, Maritimes Region
Kirsten Clark	DFO Science, Maritimes Region
Irene Andrushchenko	DFO Science, Maritimes Region
Ryan Martin	DFO Science, Maritimes Region
Allan Debertin	DFO Science, Maritimes Region
Yanjun Wang	DFO Science, Maritimes Region
Melanie Barrett	DFO Science, Maritimes Region
Quinn McCurdy	DFO Science, Maritimes Region
Virginia Noble	DFO Science, Maritimes Region
Jamie Emberley	DFO Science, Maritimes Region
Catriona Régnier-McKellar	DFO Science, Maritimes Region
Cornelia den Heyer	DFO Science, Maritimes Region
Don Clark	DFO Science, Maritimes Region
Lottie Bennett	DFO Science, Maritimes Region
Alida Bundy	DFO Science, Maritimes Region
Monica Finley	DFO Science, Maritimes Region
Fonya Irvine	DFO Science, Maritimes Region
Ellen MacEachern	DFO Science, Maritimes Region
Jennifer Ford	DFO Science, Maritimes Region
Caira Clark	DFO Science, Maritimes Region
Daphne Themelis	DFO Science, Maritimes Region
Penny Doherty	DFO Resource Management, Maritimes Region

---

**Approved by**

Alain Vézina  
Regional Director of Science  
DFO Maritimes Region  
Dartmouth, Nova Scotia  
Ph. 902-426-3490

Date: January 17, 2019

**Sources of Information**

- Atkinson, D.B., and Power, D. 1991. The Redfish Stock Issue in 3P, 4RST and 4VWX. CAFSAC Res. Doc. 91/38.
- Branton, R., and Halliday, R.G. 1994. Unit 3 Redfish Population and Fisheries Trends. DFO Atl. Res. Doc. 94/38.
- Branton, R. 1995. Update on the Status of Unit 3 Redfish: 1994. DFO Atl. Res. Doc. 96/32.
- Branton, R. 1996. Update on the Status of Unit 3 Redfish: 1996. DFO Atl. Res. Doc. 96/114.
- Branton, R. 1997. Update on the Status of Unit 3 Redfish: 1997. DFO Atl. Res. Doc. 97/103.
- Branton, R. 1998. Update on the Status of Unit 3 Redfish: 1998. DFO Atl. Res. Doc. 98/138.
- Branton, R. 1999. Update on the Status of Unit 3 Redfish: 1999. DFO CSAS. Res. Doc. 99/152.
- Branton, R., and Black, G. 2002. 2002 Summer Groundfish Survey Update for Selected Scotia-Fundy Groundfish Stocks. CSAS Res. Doc. 2002/089.
- DFO. 2012. Reference Points Consistent with the Precautionary Approach for a Variety of Stocks in the Maritimes Region. DFO Can. Sci. Advis. Sec. Sci. Advis. Rep. 2012/035.
- DFO. 2017a. 2016 Maritimes Research Vessel Survey Trends on the Scotian Shelf and Bay of Fundy. DFO Can. Sci. Advis. Sec. Res. Rep. 2017/004.
- DFO. 2017b. Proceedings of the Zonal Peer Review of the Assessment Framework for Units 1+2 Deepwater (*Sebastes mentella*) and Acadian Redfish (*Sebastes fasciatus*) and for Unit 3 Acadian Redfish; December 8 to 11, 2015. DFO Can. Sci. Advis. Sec. Proceed. Ser. 2016/038.
- Morin, R.B., Methot, R., Sévigny, J.-M., Power, D.J., Branton, R.M., and McIntyre, T.M. 2004. Review of the Structure, the Abundance and Distribution of *Sebastes mentella* and *S. fasciatus* in Atlantic Canada in a Species-at-Risk Context. CSAS Res. Doc. 2004/058.
- NEFSC (Northeast Fisheries Science Center). 2002. Final Report of the Working Group on Re-Evaluation of Biological Reference Points for New England Groundfish. March 2002. NEFSC Ref. Doc., No. 02-04.
- Stone, H.H. 2010 Pollock Assessment Update for the Western Component (4Xopqrs5); pp 21-96. In: J.M. Porter and V. Docherty, V. (Chairpersons). 2011 Proceedings of 4X5 Pollock Management Strategy Evaluation Workshop – 2010. Can. Manuscr. Rep. Fish. Aquat. Sci. 2945.
- Stone, H.H., and Hanson, S.C. 2014. 4X5Y Haddock 2014 Framework Assessment: Data Inputs and Exploratory Modelling. DFO Can. Sci. Advis. Sec. Res. Doc. 2015/022.

Stone, H.H., Themelis, D., Cook, A.M., Clark, D.S., Showell, M.A., Young, G., Gross, W.E., Comeau, P.A., and Allade, L.A. 2013. Silver Hake 2012 Framework Assessment: Data Inputs and Exploratory Modelling. DFO Can. Sci. Advis. Sec. Res. Doc. 2013/008.

**This Report is Available from the:**

Center for Science Advice (CSA)  
Maritimes Region  
Fisheries and Oceans Canada  
Bedford Institute of Oceanography  
1 Challenger Drive, PO Box 1006  
Dartmouth, Nova Scotia B2Y 4A2

Telephone: 902-426-7070

E-Mail: [MaritimesRAP.XMAR@dfo-mpo.gc.ca](mailto:MaritimesRAP.XMAR@dfo-mpo.gc.ca)

Internet address: [www.dfo-mpo.gc.ca/csas-sccs/](http://www.dfo-mpo.gc.ca/csas-sccs/)

ISSN 1919-3769

© Her Majesty the Queen in Right of Canada, 2019



Correct Citation for this Publication:

DFO. 2019. Stock Status Update of Unit 3 Redfish. DFO Can. Sci. Advis. Sec. Sci. Resp. 2019/014.

*Aussi disponible en français:*

*MPO. 2019. Mise à jour de l'état du stock de sébaste de l'unité 3. Secr. can. de consult. sci. du MPO, Rép. des Sci. 2019/014.*