



SCALLOP FISHERY AREA/TIME CLOSURE TO PROTECT ATLANTIC COD (*GADUS MORHUA*) SPAWNING AGGREGATIONS IN NAFO DIVISION 5Z (GEORGES BANK)

Context

The need to reduce the fishing mortality experienced by Atlantic Cod (*Gadus morhua*) on the Canadian portion of Georges Bank has led to efforts by the offshore Scallop fishery to reduce Cod bycatch. Along with active avoidance protocols adopted by the offshore scallop fleet, Fisheries and Oceans Canada (DFO) has implemented area/time closures from early February to the end of March since 2005. The objectives of these closures are to reduce bycatch and minimize disturbance to spawning aggregations of Cod by the offshore scallop fishery on Georges Bank. To assist resource managers in determining appropriate area closures for the offshore scallop fishery on Georges Bank during the Cod spawning seasons, fisheries management asked the following question: "What does a review of eastern Georges Bank (subdivisions 5Zj and m) Cod distribution, particularly at spawning time, reveal about the spatial trends of the species and its overlap with the offshore scallop fishery? Highlight potential areas of high cod concentration in NAFO subdivision 5Zjm using the cells previously defined and used."

This document provides information on the spatial distribution of Cod abundance on eastern Georges Bank during the spawning period based upon the DFO Winter Georges Bank Research Vessel (RV) Survey and its overlap with scallop catches on the Canadian portion of Georges Bank. In 2013, the most recent 10-year spatial distribution of Cod was compared to the full time series (starting in 1996). The results of this analysis showed that a change in distribution had occurred and, using the most recent 10-year average during the spawning period, more accurately reflects the current distribution of Atlantic Cod on Georges Bank (DFO 2013).

This Science Response Report results from the Science Response Process of January 16, 2018, on the Update of Scallop Fishery Area/Time Closure on Georges Bank to Protect Cod Spawning Aggregations.

Analysis and Response

The 2017 first quarter Canadian offshore scallop catches from Georges Bank correspond to approximately 31% (1,140 metric tonnes (t) of meats) of the Total Allowable Catch (TAC) for the year, which is above the long term average percentage for the first quarter (18% since 1990).

The information used in this analysis has been updated with the 2017 Cod abundance data on eastern Georges Bank obtained from the annual DFO RV Winter Survey as well as Scallop catches from the Canadian offshore scallop fishery. Details on the methods for this analysis can be found in the Maritimes Region Science Expert Opinion 2006 (DFO 2006). Information from the DFO Winter RV Survey for Northwest Atlantic Fisheries Organization (NAFO) subdivision 5Zjm conducted in February and March was used to identify areas of high aggregations of adult (Age 3+) Cod. The distribution of Age 3+ Cod was plotted on a grid of 5-minute longitude by

Maritimes Region

3.33-minute latitude cells (approximately 12.5 nautical miles² or 43 km² per cell). Cod abundance data were standardized for each year by dividing the number of Age 3+ Cod per tow by the annual mean number of Age 3+ Cod per tow for strata within NAFO subdivisions 5Zjm. These standardized estimates were then averaged in each cell using the most recent 10 years of data (2008-2017). Using 10 years of data enables the analysis to account for recent shifts in distribution while reducing the influence of both very large tows and annual variability. Prior to 2013, the full time series was used for this analysis, but the 2013 analysis found that the full time series was unable to identify recent changes in distribution (DFO 2013).

The cells with a standardized average of 3.5 or more Age 3+ Cod per tow for the last 10 years were numbered 1 to 11 in order of decreasing abundance (Figure 1). These cells were compared to 2017 first quarter Scallop catches (Figure 2; Table 1). Of the 15 cells ranked in the previous year's analysis, 11 remained as ranked cells in this analysis. All cells in this analysis were ranked last year and four cells ranked last year were not ranked this year.

In 2017, six cells were closed (see asterisks in Figures 1 and 2) and five of these cells have been ranked again this year (cells 1, 3, 4, 5 and 9; see Variation Order MAR-2017-015 and DFO 2017). The strongest aggregations of Cod occurred near the north-center of the bank.

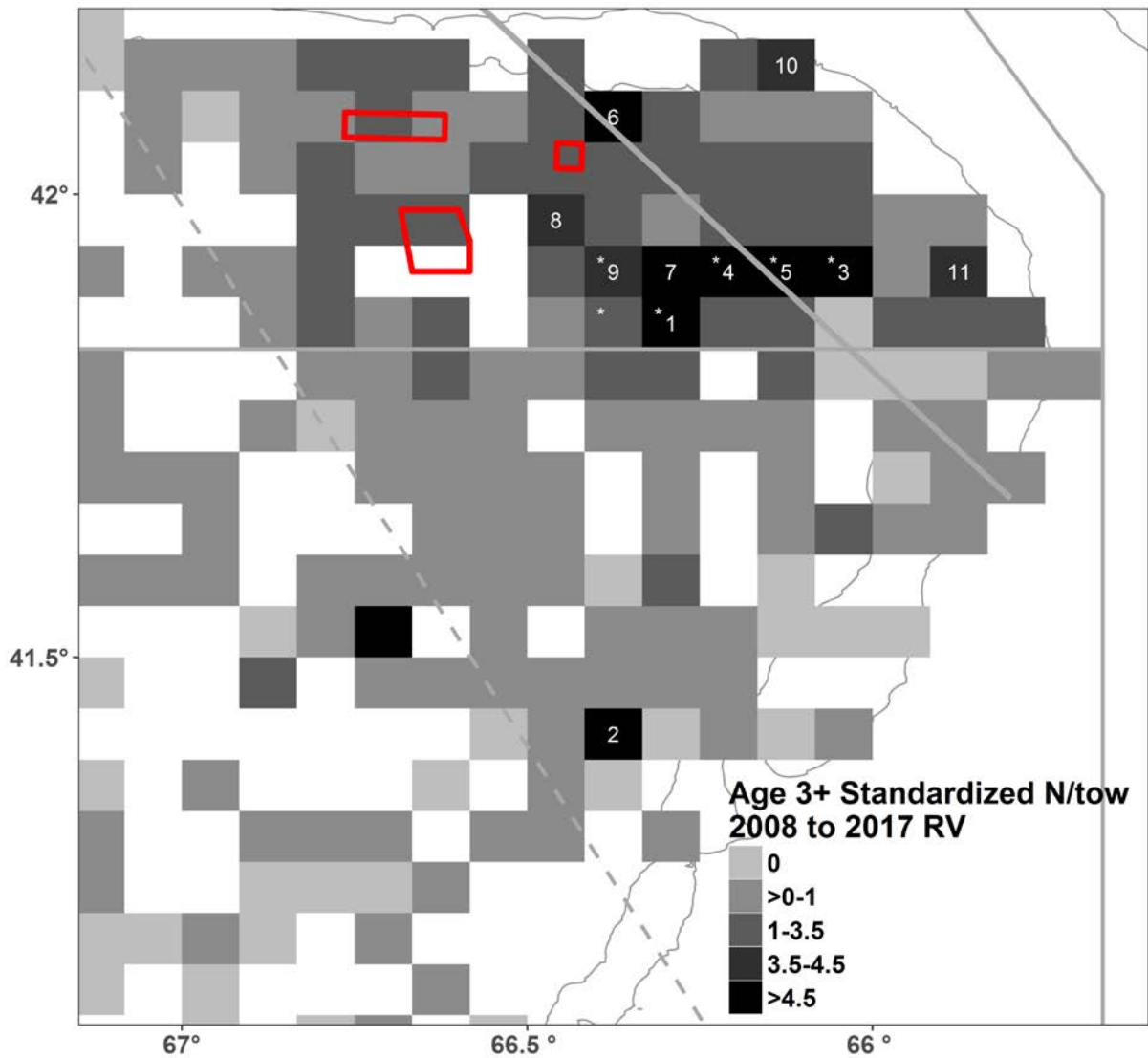


Figure 1. Distribution of aggregated Age 3+ Cod on eastern Georges Bank from DFO Winter RV Survey (2008 to 2017). Cells that were part of the 2017 Scallop-fishery cod closure are indicated by an asterisk (*). The horizontal solid grey line demarcates NAFO subdivisions 5Zj and 5Zm. The diagonal solid grey line demarcates the Georges Bank Scallop management areas 'a' and 'b'. The diagonal dashed grey line indicates the Canada/USA International Court of Justice line. The red boxes indicate Scallop fishery closures that were in place during the first quarter of 2017; these closures are voluntary closures implemented by the Canadian offshore Scallop fleet.

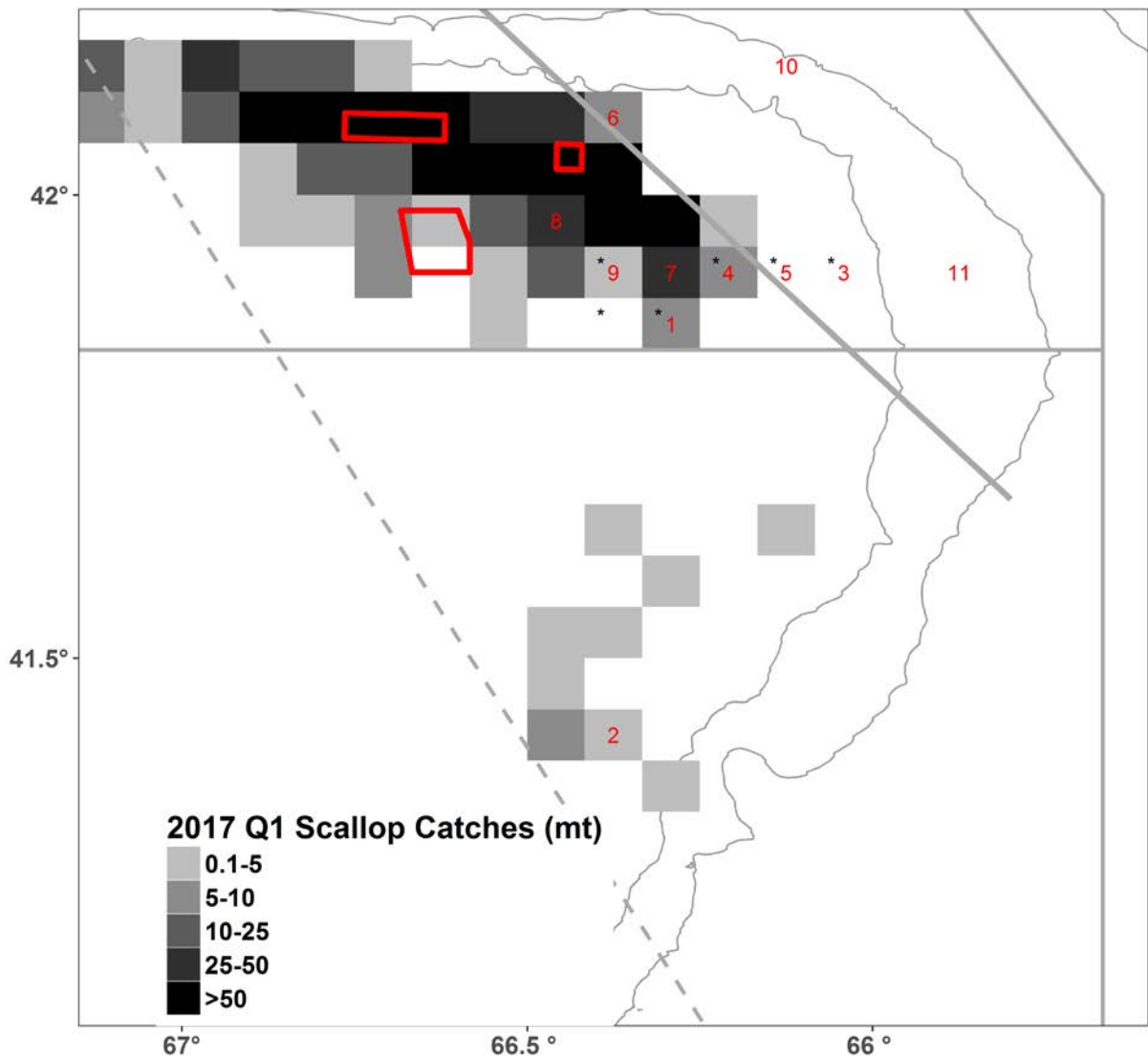


Figure 2. Distribution of Georges Bank offshore Scallop catch (tonnes of meat) by the Canadian Scallop fishery during the first quarter of 2017. The darkest cells have values ranging from 56 tonnes to 117 tonnes. Cells that were part of the 2017 Scallop-fishery cod closure are indicated by an asterisk (*). The horizontal solid grey line demarcates NAFO subdivisions 5Zj and 5Zm. The diagonal solid grey line demarcates the Georges Bank Scallop management areas 'a' and 'b'. The diagonal dashed grey line indicates the Canada/USA International Court of Justice line. The numbers 1 to 11 represent the ranked Cod cells from Figure 1. The red boxes indicate Scallop fishery closures that were in place during the first quarter of 2017; these closures are voluntary closures implemented by the Canadian offshore Scallop fleet.

Table 1. The first quarter Scallop catch (tonnes of meat) from the 2017 Canadian offshore Scallop fleet for each of the high density Cod cells. High density cod cells are cells with 3.5 or more standardized Age 3+ Cod on average over the last 10 years of the DFO Winter RV Survey (2008 to 2017). The Cod cells, numbered 1 to 11, are in descending order of Cod abundance. The greyscale rankings are used to highlight cells with Scallop catch (darker represents increased catch). Note that the values in Table 1 prior to 2017 have been updated and may vary from the values used in previous updates.

Year	Cod Cell Rank											Legend
	1*	2	3*	4*	5*	6	7	8	9*	10	11	
2017	7.6	1	0	7.9	0	9.8	44	47	1.4	0	0	Catch > 50 25 < Catch ≤ 50 10 < Catch ≤ 25 5 < Catch ≤ 10 0 < Catch ≤ 5 Catch = 0
2016	1.8	0	0	1.1	0	0	173	7.8	0	0	0	
2015	0	0	0	1.5	0	0	0	6.5	0	0	0	
2014	0	0	0	0	0	7.2	0	98	0	0	0	
2013	0	0	0	0	0	10.3	0	0.4	0	0	0	
2012	23	0	0	9.8	0	0	1.7	0.6	19	0	0	
2011	32	0	0	0	0	0	2.3	6.8	5.8	0	0	
2010	4.5	0	0	0.8	0	0	0	15	0	0	0	
2009	1.7	0	0	11	0	3.9	3.8	38	5.7	0	0	
2008	0	0	0	107	0	8.6	15	29	0	0	0	

* indicates cells that were part of the 2017 closure

Seven of the top 11 ranked Cod cells had Scallop catches in the first quarter of 2017 (cells 1, 2, 4, 6, 7, 8, and 9; Table 1). The catch from these cells was 119 tonnes of meat for this period (approximately 10.5% of the total Canadian first quarter Georges Bank scallop catch).

The cells selected for closure in 2017 (see asterisks in Figure 2) had low first quarter Scallop catch prior to the closure, which began on February 13, 2017. A closure similar to 2017 based on the top ranking cells would have a relatively low impact on the offshore scallop fishery if the 2018 first quarter Scallop fishing distribution is similar to that of the first quarter in 2017 (Figure 2).

Conclusions

Based on a 10-year average of DFO Winter RV Survey data, the highest densities of Cod on Georges Bank are found in a north-central area of the bank. There were 11 cells with more than 3.5 Age 3+ Cod per standardized tow and 9 of these cells were found in this north-central area. A Cod area/time closure based on the top ranking cells would have a relatively low impact on the offshore Scallop fishery provided the 2018 first quarter Scallop fishing distribution is similar to that of the first quarter in 2017.

Contributors

Name	Affiliation
Quinn McCurdy (co-lead)	DFO Science, Maritimes Region
David Keith (co-lead)	DFO Science, Maritimes Region
Monica Finley	DFO Science, Maritimes Region
Freya Keyser	DFO Science, Maritimes Region
Melanie Barrett	DFO Science, Maritimes Region
Manon Cassista-Da Ros	DFO Science, Maritimes Region

Tricia Pearo Drew
Lottie Bennett
Sarah Cheney

DFO Science, Maritimes Region
DFO Science, Maritimes Region
DFO Resource Management, Maritimes Region

Approved by

Alain Vézina
Regional Director of Science, DFO Maritimes Region
Dartmouth, NS
Tel: 902 426-3490

Date: January 29, 2018

Sources of Information

DFO. 2006. Science Expert Opinion on Scallop Fishery Area/Time Closure - 2006. Mar. Reg. Expert Opin. 2006/05.

DFO. 2013. [Scallop Fishery Area/Time Closure to Protect Cod Spawning Aggregations in 5Z \(Georges Bank\)](#). DFO Can. Sci. Advis. Sec. Sci. Resp. 2013/008.

DFO. 2017. [Scallop Fishery Area/Time Closure to Protect Cod Spawning Aggregations in 5Z \(Georges Bank\)](#). DFO Can. Sci. Advis. Sec. Sci. Resp. 2017/027.

This Report is Available from the :

Center for Science Advice (CSA)
Maritimes Region
Fisheries and Oceans Canada
PO Box 1006, Station B203
Dartmouth, Nova Scotia
Canada B2Y 4A2

Telephone: 902 426-7070

E-Mail: XMARMRAP@dfo-mpo.gc.ca

Internet address: www.dfo-mpo.gc.ca/csas-sccs/

ISSN 1919-3769

© Her Majesty the Queen in Right of Canada, 2018



Correct Citation for this Publication:

DFO. 2018. Scallop Fishery Area/Time Closure to Protect Atlantic Cod (*Gadus morhua*) Spawning Aggregations in NAFO Division 5Z (Georges Bank). DFO Can. Sci. Advis. Sec. Sci. Resp. 2018/013.

Aussi disponible en français :

*MPO. 2018. Fermetures spatio-temporelles de la pêche au pétoncle destinées à protéger les bancs de reproducteurs de morues franches (*Gadus morhua*) dans la division 5Z de l'OPANO (banc de Georges). Secr. can. de consult. sci. du MPO. Rép. des Sci. 2018/013.*