

August 9, 2011

---

## **2011 MAINLAND INLET PINK FORECAST**

This is an off cycle year for Mainland Inlet Pink stocks. Odd year returns are generally small, with the Kakweiken and Glendale systems contributing to the majority of the return. The odd year cycle-line of pink salmon has continued to demonstrate an improving trend over the last few generations for all stocks in the area. The strong returns in 2009 indicated improved marine conditions attributing to better survivals for the fry that out-migrated in 2008. Even though returns to the spawning grounds in 2009 were strong, significant rain events in November likely had a large negative impact on the deposited eggs. This was evident in downstream monitoring at both Glendale and Quinsam Rivers. Expectations for 2011 are low to near target based on the strong parental brood return in 2009, the likelihood of reduced freshwater survival due to the flooding events in 2009 and the indication of lower productivity in the marine waters during the 2010 outmigration time period. Historically, pink returns to this area have been highly variable and expectations are highly uncertain. The key indicator streams that are used to assist in determining the relative abundance of this stock group include the Glendale, Kakweiken, Ahnuhati, Kingcome (Atlazi and Clear tributaries) and Wakeman Rivers (Atway and Wahpeeto tributaries). In addition, there are a number of other systems being actively enumerated for pink salmon which will be incorporated in the post season analysis.

---

### **STOCK STATUS**

The second assessment flight was conducted on August 8, 2011. Water levels in all systems surveyed were higher than normal for this time of year. Increased abundance of pinks was observed in 3 of the 5 systems relative to the previous flight. The highest densities were in the Kakweiken and Glendale systems with most of the distribution contained to the lower portions of those rivers. Coho, Chinook and summer Chum were also encountered in some of the systems. Ahnuhati summer chum, estimated around 3,000, were beginning to pair up for spawning in the next 1 to 2 weeks.

### **Approach Areas**

Approach water flights were conducted around Glendale, Ahnuhati and Kakweiken. There continues to be sign of pinks in Glendale Bay and in Siwash Bay, an approach to the Glendale system.

### **River Escapements**

In most cases, for the mainland inlet systems surveyed for pink salmon, escapement estimates are derived through visual (aerial and foot inspections) observations typically resulting in a peak count with several visits. As we progress through the season, the reliability in these estimates improve as the fish begin to move from the holding pools out onto the spawning grounds.

### **FISHING ACTIVITIES**

---

#### **First Nations**

There has been no reported effort or catch to date in the Mainland Inlets of Area 12 directed at Mainland Inlet Pinks

#### **Recreational**

Effort and catch directed at pinks in the Mainland Inlets of Area 12 has been very low to date.

#### **Test Fishing**

There are currently no plans to conduct test fisheries in the approach areas for Mainland Inlet pink stocks.

#### **Commercial**

It is still early in the return timing of these Mainland Pinks. Commercial opportunities will be dependant on return abundance.

---

### **ASSESSMENT PLANS FOR THE COMING WEEK**

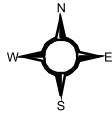
Another assessment flight is scheduled for August 23<sup>rd</sup>.

**For further information please contact Pieter Van Will at (250) 949-9273**



# Area 12: Salmon Spawning Streams

= Main Pink

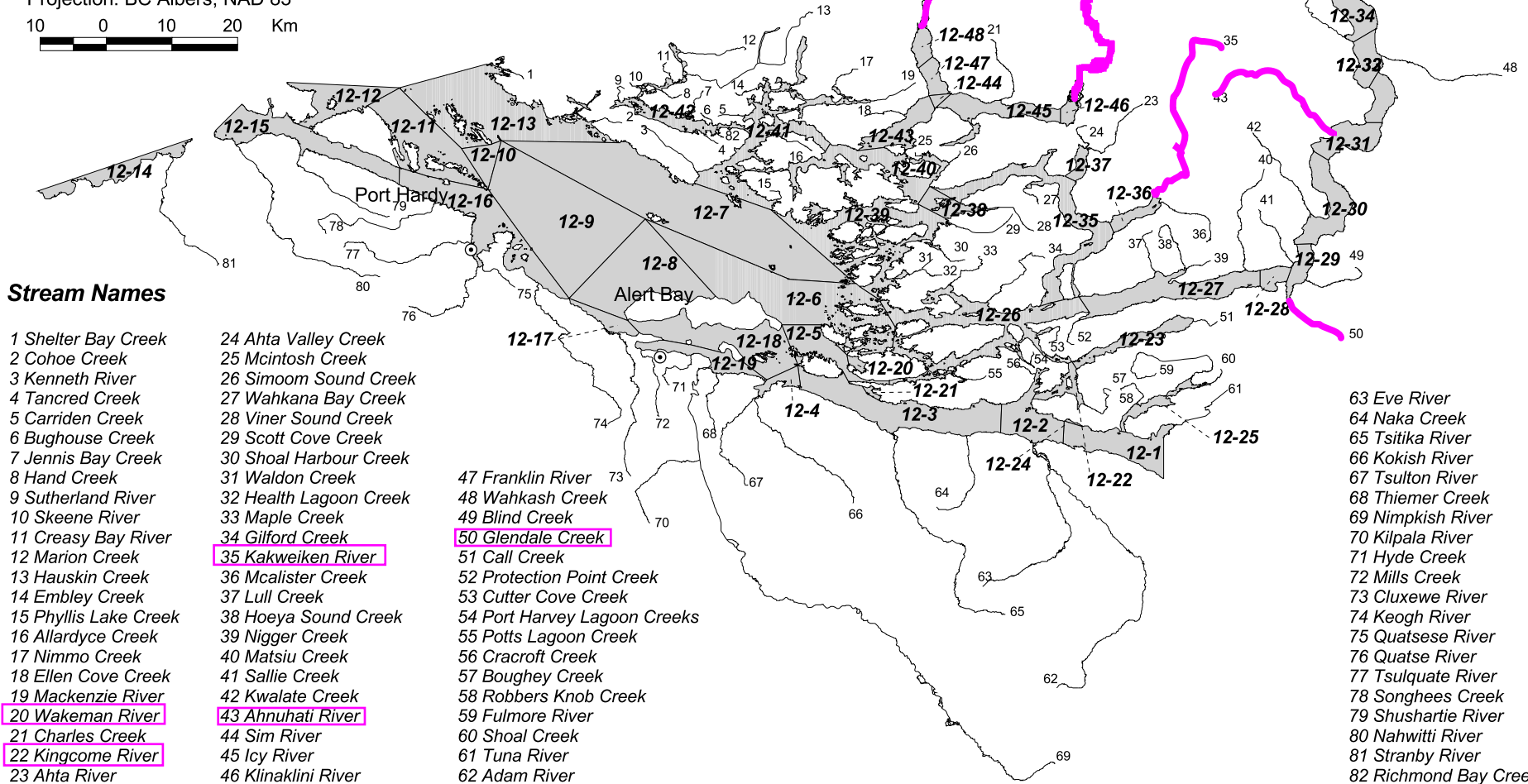


Date: January 28, 2004

Scale 1:950,000

Projection: BC Albers, NAD 83

10 0 10 20 Km



## Stream Names

- |                           |                           |                              |                       |
|---------------------------|---------------------------|------------------------------|-----------------------|
| 1 Shelter Bay Creek       | 24 Ahta Valley Creek      | 47 Franklin River            | 63 Eve River          |
| 2 Cohoe Creek             | 25 McIntosh Creek         | 48 Wakhash Creek             | 64 Naka Creek         |
| 3 Kenneth River           | 26 Simoom Sound Creek     | 49 Blind Creek               | 65 Tsitika River      |
| 4 Tancred Creek           | 27 Wakhana Bay Creek      | 50 <b>Glendale Creek</b>     | 66 Kokish River       |
| 5 Carriden Creek          | 28 Viner Sound Creek      | 51 Call Creek                | 67 Tsulton River      |
| 6 Bughouse Creek          | 29 Scott Cove Creek       | 52 Protection Point Creek    | 68 Thiemer Creek      |
| 7 Jennis Bay Creek        | 30 Shoal Harbour Creek    | 53 Cutter Cove Creek         | 69 Nimpkish River     |
| 8 Hand Creek              | 31 Waldon Creek           | 54 Port Harvey Lagoon Creeks | 70 Kilpala River      |
| 9 Sutherland River        | 32 Health Lagoon Creek    | 55 Potts Lagoon Creek        | 71 Hyde Creek         |
| 10 Skeene River           | 33 Maple Creek            | 56 Cracroft Creek            | 72 Mills Creek        |
| 11 Creasy Bay River       | 34 <b>Gilford Creek</b>   | 57 Boughey Creek             | 73 Cluxewe River      |
| 12 Marion Creek           | 35 <b>Kakweiken River</b> | 58 Robbers Knob Creek        | 74 Keogh River        |
| 13 Hauskin Creek          | 36 Mcalister Creek        | 59 Fulmore River             | 75 Quatsese River     |
| 14 Embley Creek           | 37 Lull Creek             | 60 Shoal Creek               | 76 Quate River        |
| 15 Phyllis Lake Creek     | 38 Hoeya Sound Creek      | 61 Tuna River                | 77 Tsulquate River    |
| 16 Allardyce Creek        | 39 Nigger Creek           | 62 Adam River                | 78 Songhees Creek     |
| 17 Nimmo Creek            | 40 Matsiu Creek           |                              | 79 Shushartie River   |
| 18 Ellen Cove Creek       | 41 Sallie Creek           |                              | 80 Nahwitti River     |
| 19 <b>Mackenzie River</b> | 42 <b>Kwalate Creek</b>   |                              | 81 Stranby River      |
| 20 <b>Wakeman River</b>   | 43 <b>Ahnuhati River</b>  |                              | 82 Richmond Bay Creek |
| 21 <b>Charles Creek</b>   | 44 Sim River              |                              |                       |
| 22 <b>Kingcome River</b>  | 45 Icy River              |                              |                       |
| 23 Ahta River             | 46 Klinaklini River       |                              |                       |

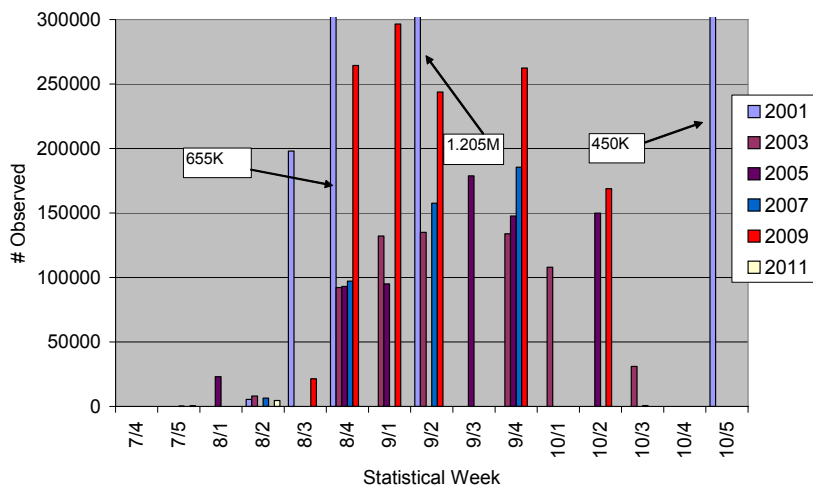
**2011 Key Stream Pink Escapement Observations and Comparisons to the 2009  
 Brood Year**

Stat Week	Glendale		Kakweiken		Ahnuhati		Kingcome		Wakeman	
	2009	2011	2009	2011	2009	2011	2009	2011	2009	2011
7/4										
7/5		500		0		0		0		0
8/1	29		1,000		0		0		0	
8/2		4,500		4,800		0		0		50
8/3	21,000		26,600		3,200		40		380	
8/4	264,000		124,000		5,300					
9/1	297,000		270,000		7,300		350		540	
9/2	244,000		200,000		7,900		326		1,400	
9/3										
9/4	262,000		249,000		9,200		267		1,400	
10/1										
10/2	169,000		85,000		3,000		219		489	
10/3										
10/4										
10/5										
<b>Total Est.</b>	489,000		354,000		12,900		536		1,800	

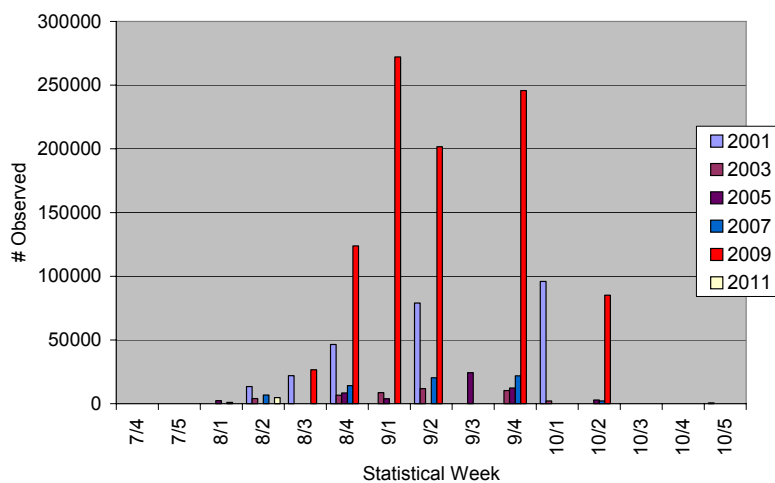
*Note: Each value in the table above is a point estimate made on the day of the observation. Blanks indicate “no observations” made. The numbers that appear in the table above are preliminary estimates, further analysis to be made post-season to provide estimates of total escapement (the blue values are the final escapement estimates from the brood year).*

# Area 12 Mainland Inlet Pink Salmon Escapement Observations (2001-2011)

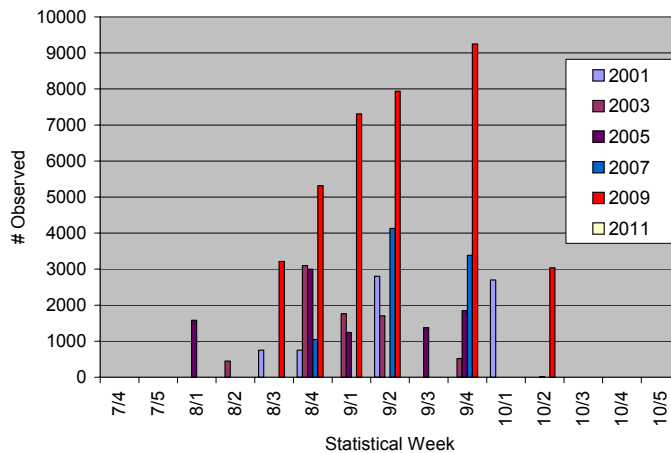
Glendale Creek Pink Observations



Kakweiken River Pink Observations



Ahnuhati River Pink Observations



## Area 12 Mainland Inlet Pink Salmon Escapement Observations (2001-2011)

