

Water Licences

- All Other Values
- Domestic
- Fish Hatchery
- Pulp Mills
- Storage - Non Power
- ◆ Power - General
- ◆ Storage - Power

0 1,250 2,500 5,000 7,500 10,000 Meters SCALE: 1:75,000

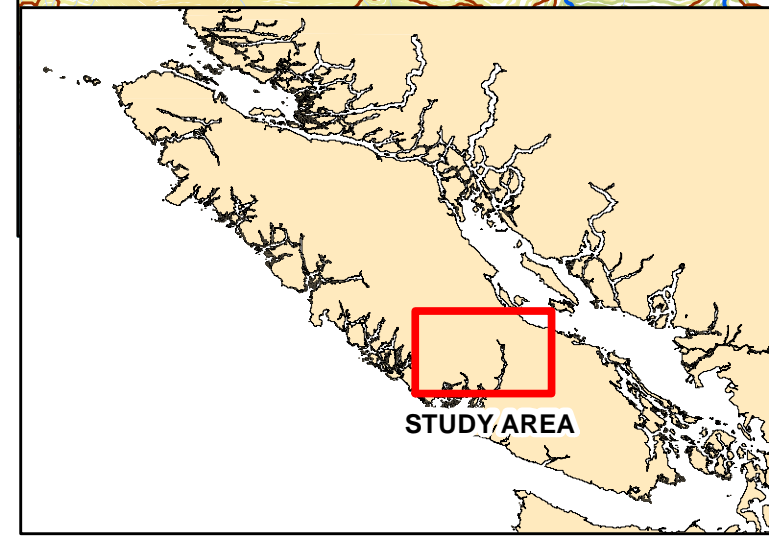
Map Base: Digital TRIM
Projection: BC Albers

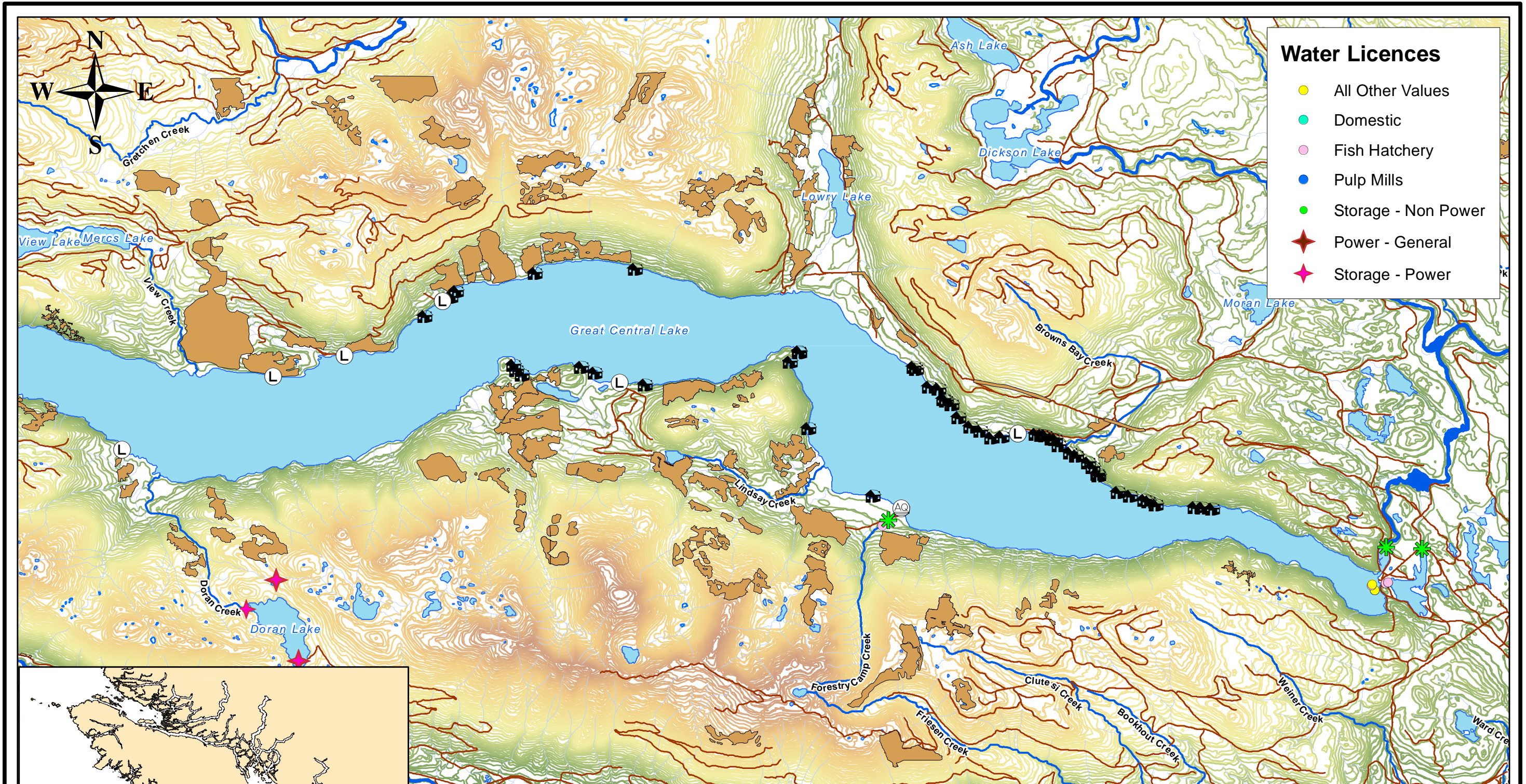
Prepared For: Fisheries and Oceans Canada
 Fisheries and Oceans / Pêches et Océans Canada
 Prepared By: M.C. Wright and Associates Ltd.
 March 31, 2011
 M. C. Wright and Associates Ltd.
 Biological Consultants
 2231 Hill Drive, Nanaimo, B.C. V9R 6T5

Legend

■ Cut Blocks	◆ Dock	L Log Dump	— Creek
— Roads	AQ Aquaculture	🏠 Float Homes	 Lake
★ Dam	■ River	— TRIM River	

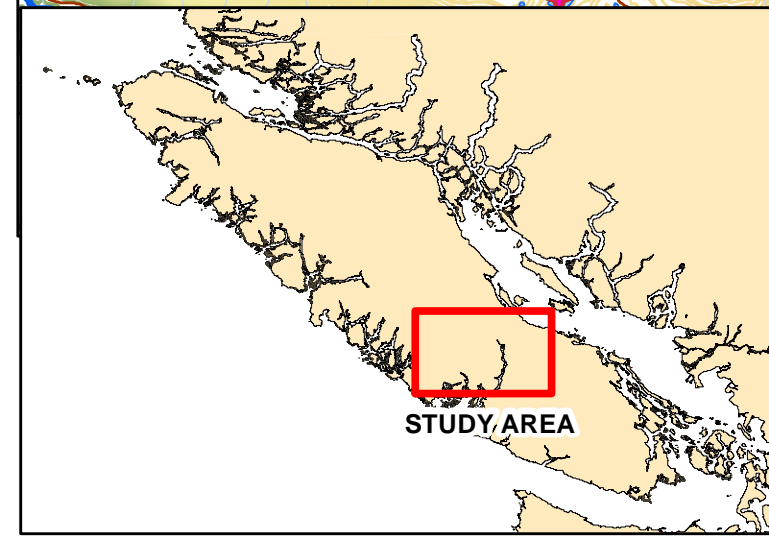
FIGURE B-4:
Land Cover Alterations and Impacts to the Stamp River





Water Licences

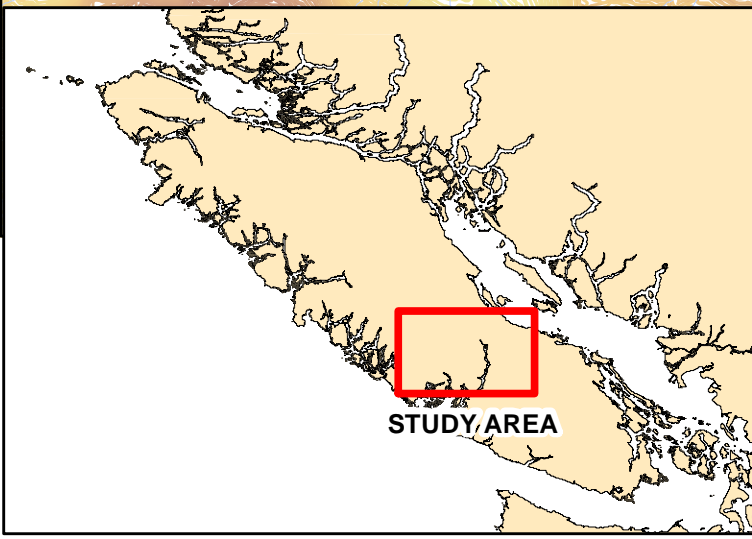
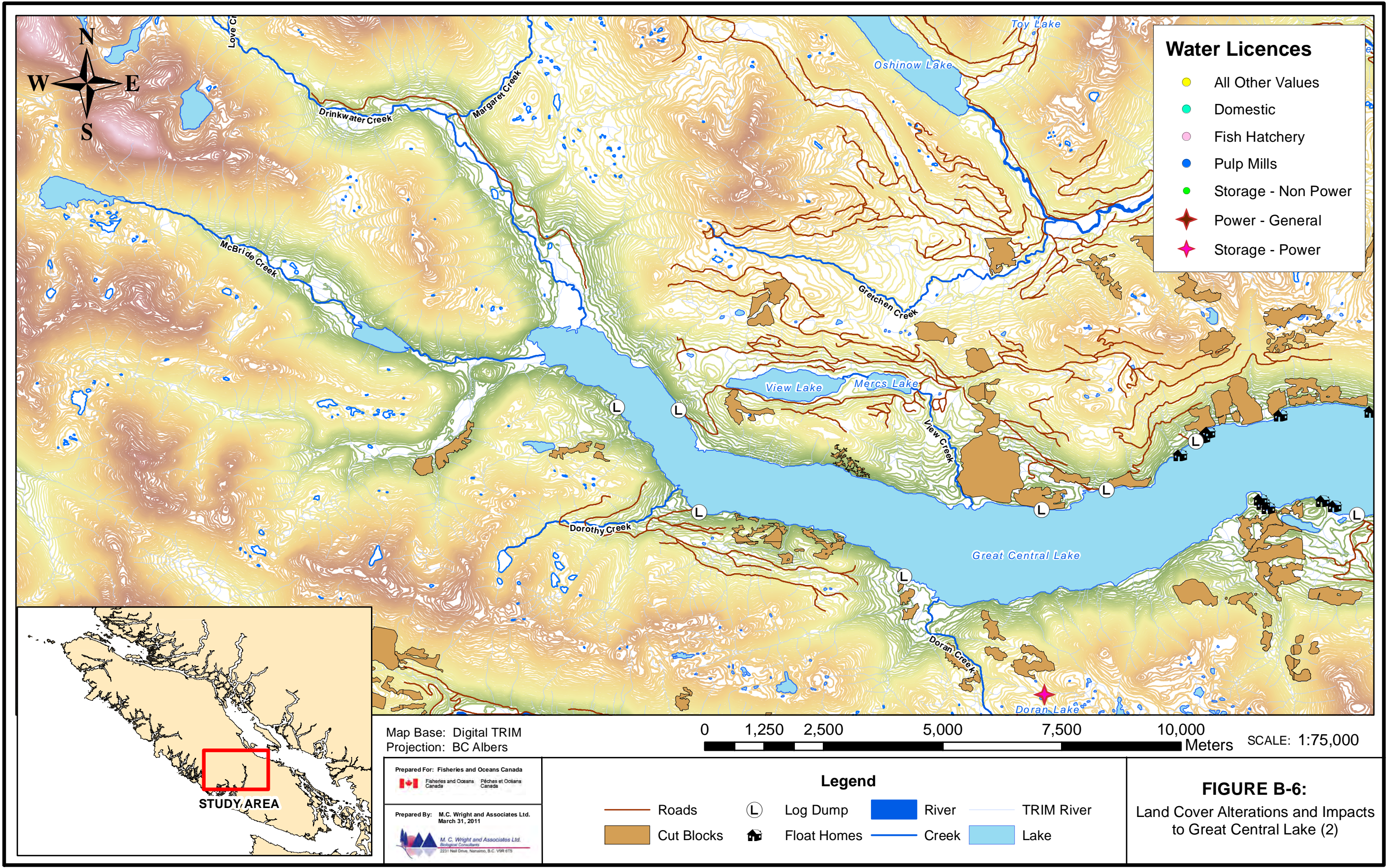
- All Other Values
- Domestic
- Fish Hatchery
- Pulp Mills
- Storage - Non Power
- ◆ Power - General
- ◆ Storage - Power



Map Base: Digital TRIM
 Projection: BC Albers
 0 1,250 2,500 5,000 7,500 10,000 Meters SCALE: 1:75,000

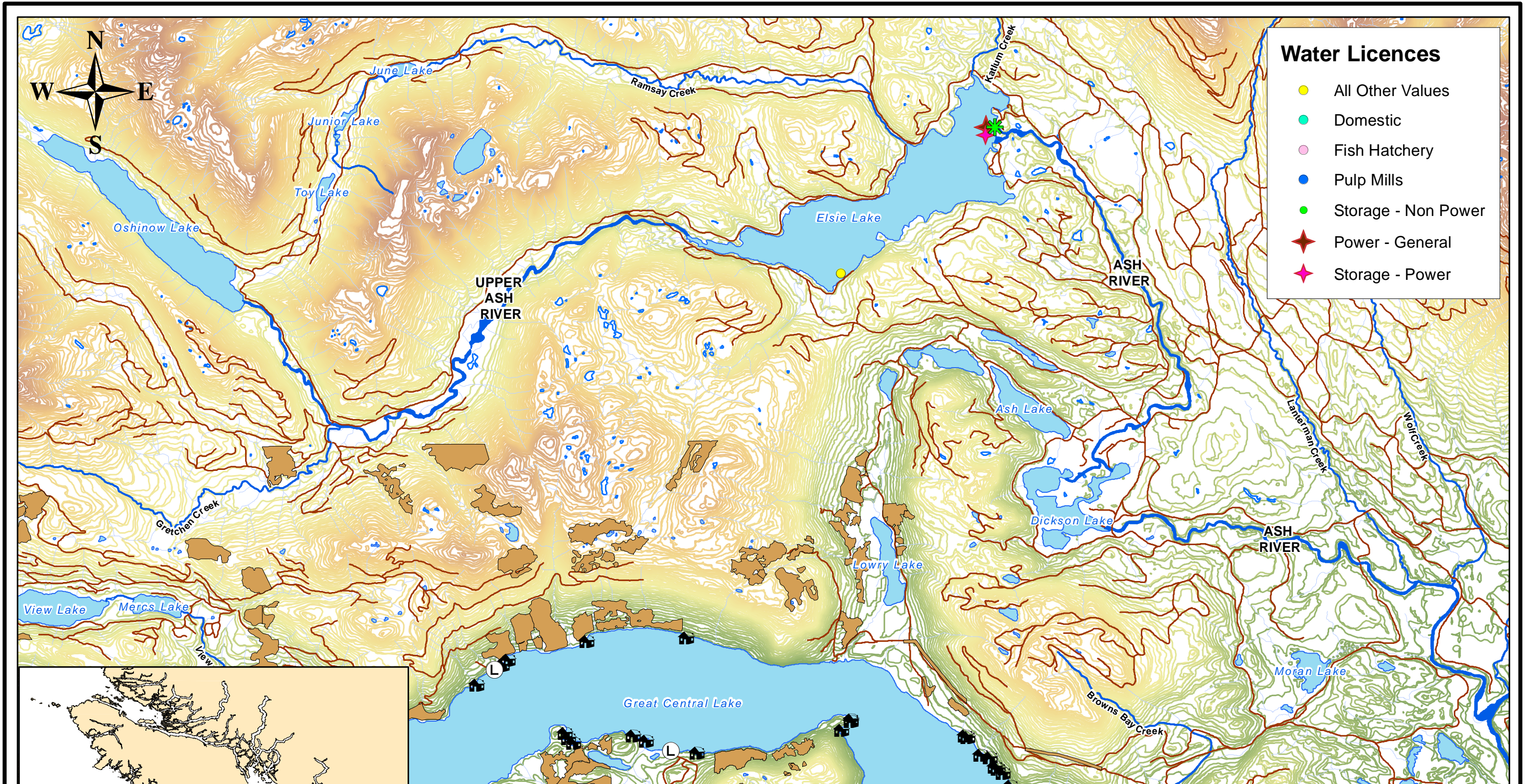
<p>Prepared For: Fisheries and Oceans Canada Fisheries and Oceans / Pêches et Océans Canada</p> <p>Prepared By: M.C. Wright and Associates Ltd. March 31, 2011 M. C. Wright and Associates Ltd. Biological Consultants 2231 Hill Drive, Nanaimo, B.C. V9R 6T5</p>	<h3>Legend</h3> <table border="0"> <tr> <td> Roads</td> <td> Dam</td> <td> Float Homes</td> <td> TRIM River</td> </tr> <tr> <td> Cut Blocks</td> <td> Aquaculture</td> <td> River</td> <td> Lake</td> </tr> <tr> <td> Log Dump</td> <td></td> <td> Creek</td> <td></td> </tr> </table>	Roads	Dam	Float Homes	TRIM River	Cut Blocks	Aquaculture	River	Lake	Log Dump		Creek	
Roads	Dam	Float Homes	TRIM River										
Cut Blocks	Aquaculture	River	Lake										
Log Dump		Creek											

FIGURE B-5:
 Land Cover Alterations and Impacts
 to Great Central Lake (1)



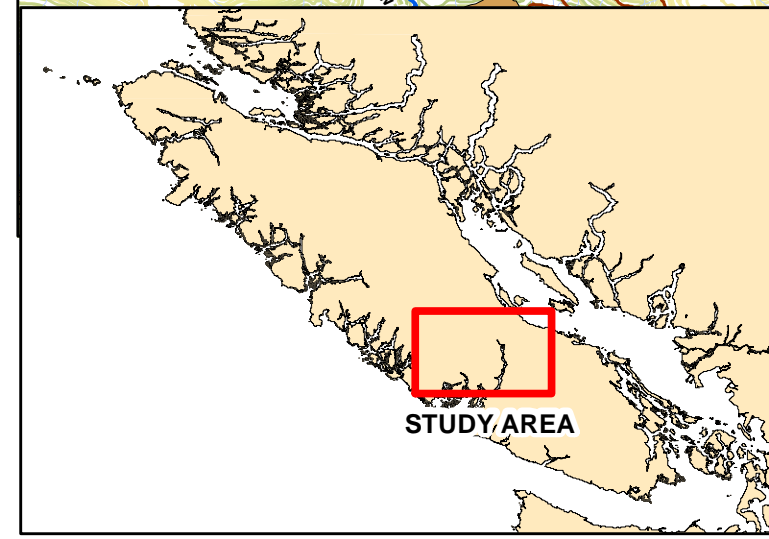
Prepared For: Fisheries and Oceans Canada
 Fisheries and Oceans / Pêches et Océans Canada

Prepared By: M.C. Wright and Associates Ltd.
 March 31, 2011
 M. C. Wright and Associates Ltd.
 Biological Consultants
 2231 Hill Drive, Nanaimo, B.C. V9R 6T5



Water Licences

- All Other Values
- Domestic
- Fish Hatchery
- Pulp Mills
- Storage - Non Power
- ★ Power - General
- ★ Storage - Power



Map Base: Digital TRIM
 Projection: BC Albers
 0 1,250 2,500 5,000 7,500 10,000 Meters SCALE: 1:75,000

Prepared For: Fisheries and Oceans Canada
 Fisheries and Oceans / Pêches et Océans Canada

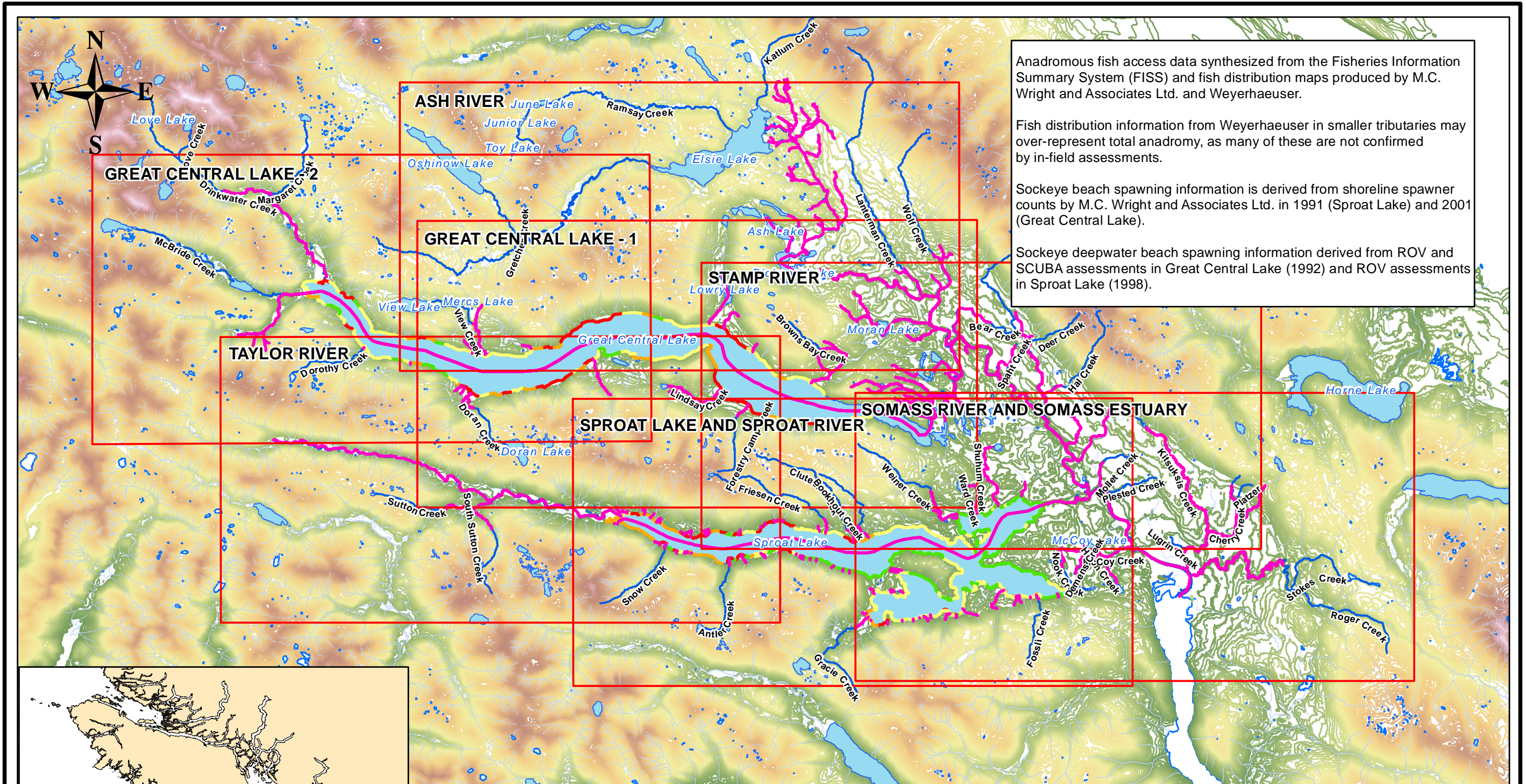
Prepared By: M.C. Wright and Associates Ltd.
 March 31, 2011

M. C. Wright and Associates Ltd.
 Biological Consultants
 2231 Hill Drive, Nanaimo, B.C. V9R 6T5

Legend

— Roads	L Log Dump	 River	 TRIM River
 Cut Blocks	 Float Homes	— Creek	 Lake
	★ Dam		

FIGURE B-7:
 Land Cover Alterations and Impacts to the Ash River

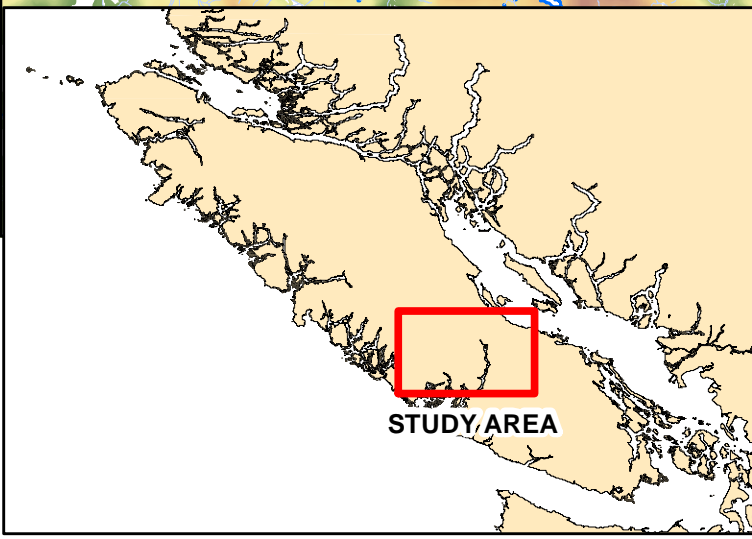


Anadromous fish access data synthesized from the Fisheries Information Summary System (FISS) and fish distribution maps produced by M.C. Wright and Associates Ltd. and Weyerhaeuser.

Fish distribution information from Weyerhaeuser in smaller tributaries may over-represent total anadromy, as many of these are not confirmed by in-field assessments.

Sockeye beach spawning information is derived from shoreline spawner counts by M.C. Wright and Associates Ltd. in 1991 (Sproat Lake) and 2001 (Great Central Lake).

Sockeye deepwater beach spawning information derived from ROV and SCUBA assessments in Great Central Lake (1992) and ROV assessments in Sproat Lake (1998).



Map Base: Digital TRIM
 Projection: BC Albers

0 3,125 6,250 12,500 18,750 25,000 Meters SCALE: 1:200,000

Prepared For: Fisheries and Oceans Canada 	Legend Sockeye Deepwater Spawning Habitat Utilization High (Red) Moderate (Orange) Low (Yellow) Zero (Green)	Sockeye Beach Spawning Habitat Density of Fish Observed 0 (Light Green) 1 - 50 (Yellow-Green) 51 - 150 (Yellow-Orange) >150 (Red)	Anadromous Fish Access (Pink line) River (Blue line) Creek (Light Blue line) TRIM River (Light Blue line) Lake (Light Blue area)
---	---	--	--

FIGURE C:
 Habitat Utilization
 of the Somass River System