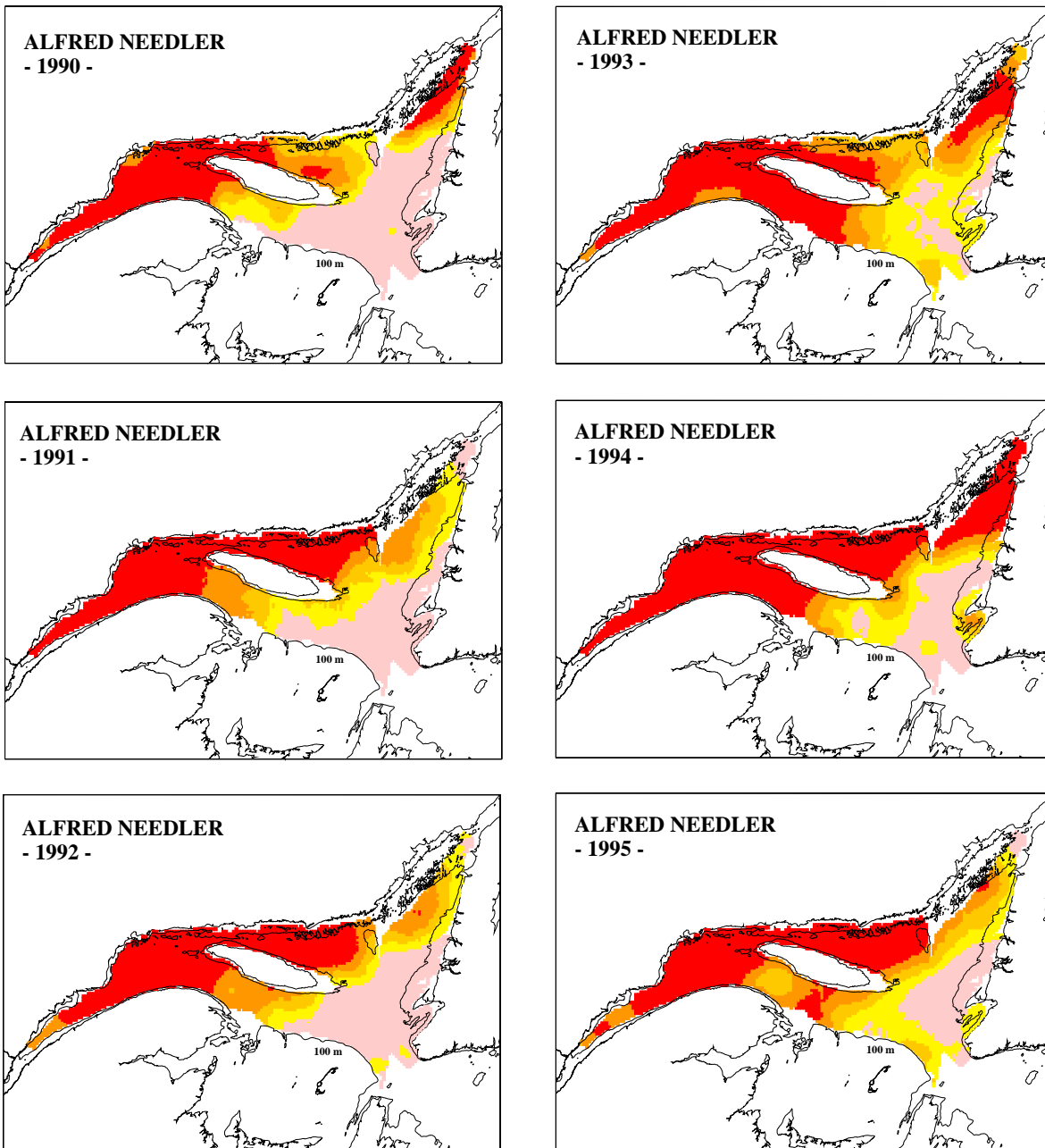


Figure 11. (Suite / Continued).



Légende / Legend:

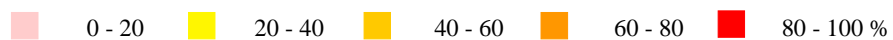
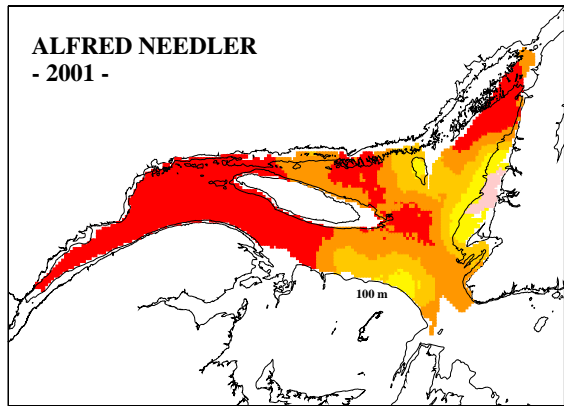
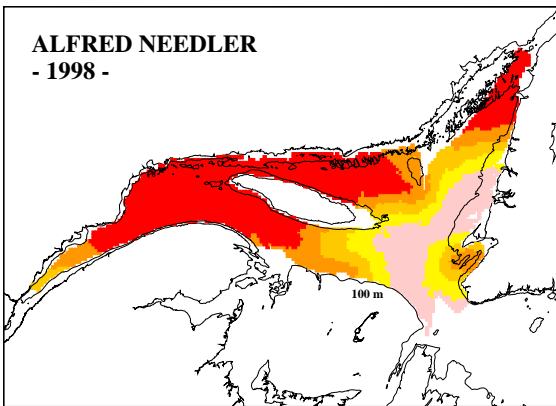
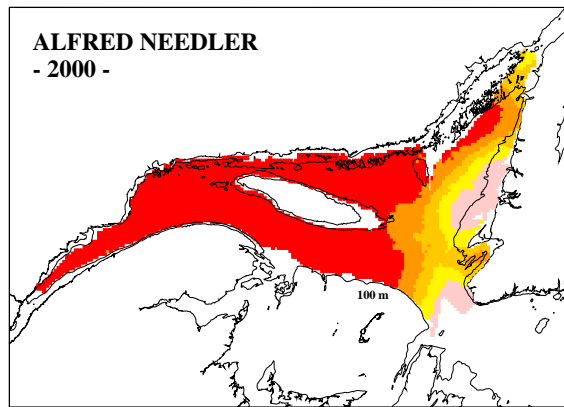
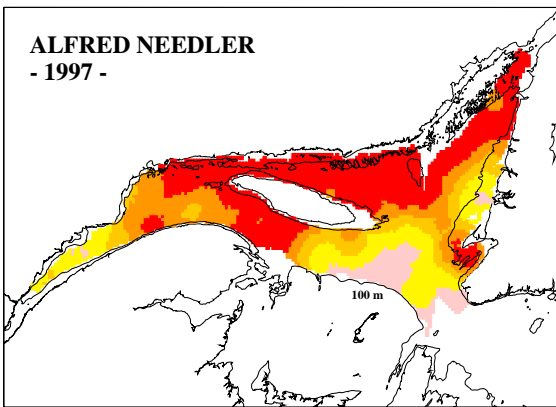
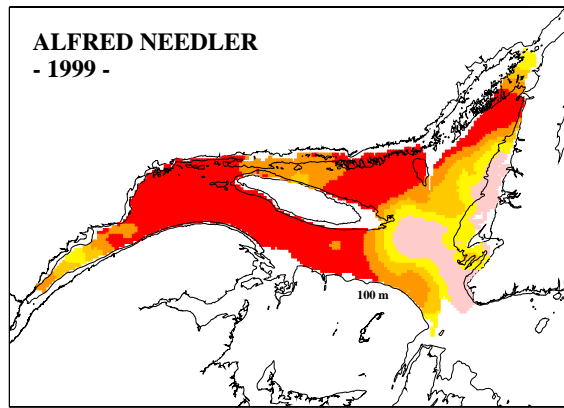
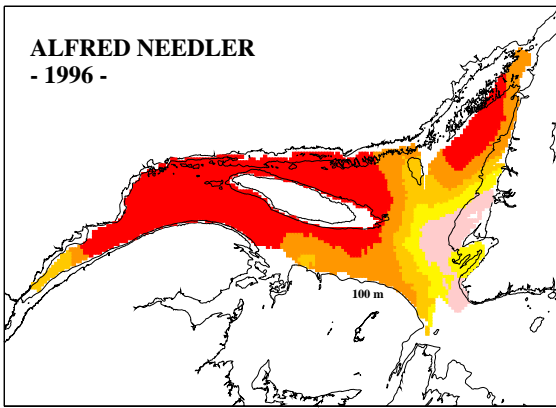


Figure 12. Surfaces des probabilités (%) de la présence du capelan pour les relevés d'abondance des poissons de fond et de la crevette du NGCC *Alfred Needler* réalisés dans le nord du golfe du Saint-Laurent en août entre 1990 et 2003 / *Probability areas (%) of the capelin occurrence for the CCGS Alfred Needler groundfish and shrimp abundance surveys conducted in the northern Gulf of St. Lawrence in August between 1990 and 2003.*



Légende / Legend:

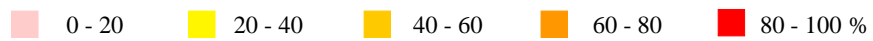
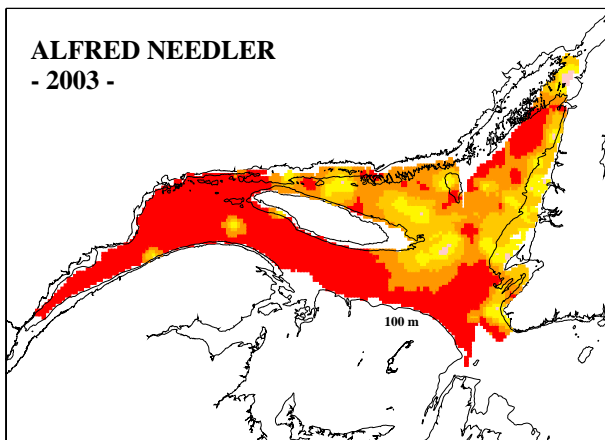
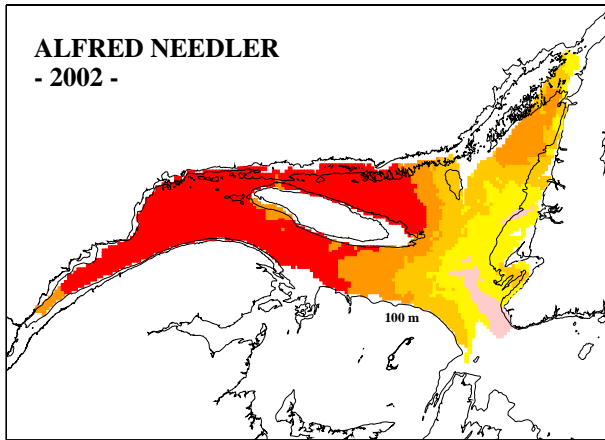


Figure 12. (Suite / *Continued*).



Légende / Legend:

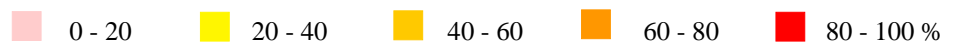
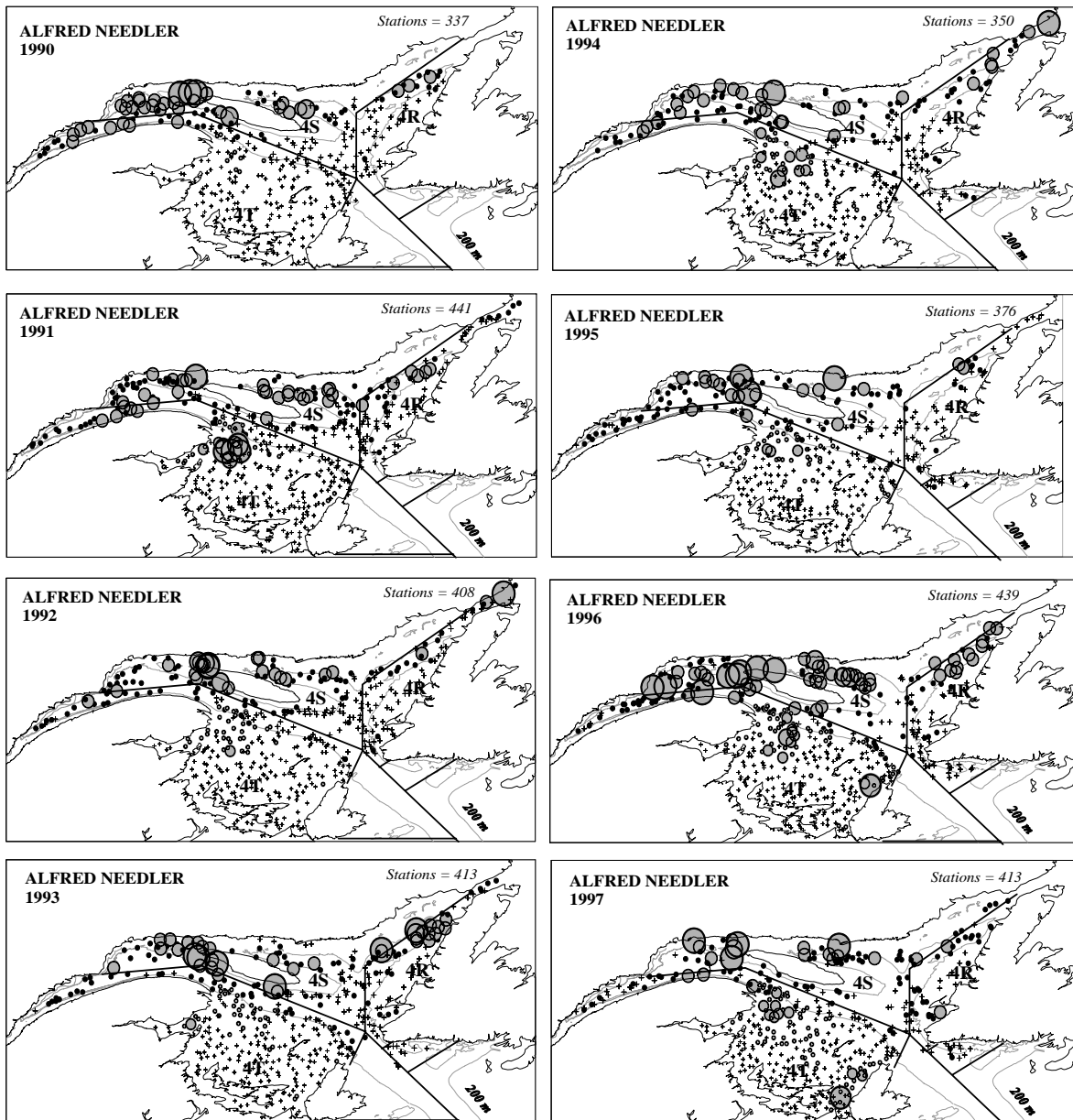


Figure 12. (Suite / *Continued*).



Légende / Legend:

+ 0    • 0-1    ◉ 1-15    ◉ 15-30    ◉ > 30 kg/trait-set

Figure 13. Cartes des prises de capelan (kg/trait) effectuées lors des relevés d'abondance des poissons de fond et de la crevette du NGCC *Alfred Needler* et NGCC *Wilfred Templeman* réalisés dans le nord (août) et le sud (septembre) du golfe du Saint-Laurent entre 1990 et 2003 / *Maps of the catches (kg/set) of capelin of the CCGS Alfred Needler and CCGS Wilfred Templeman groundfish and shrimp abundance surveys conducted in the northern (August) and southern (September) Gulf of St. Lawrence between 1990 and 2003.*

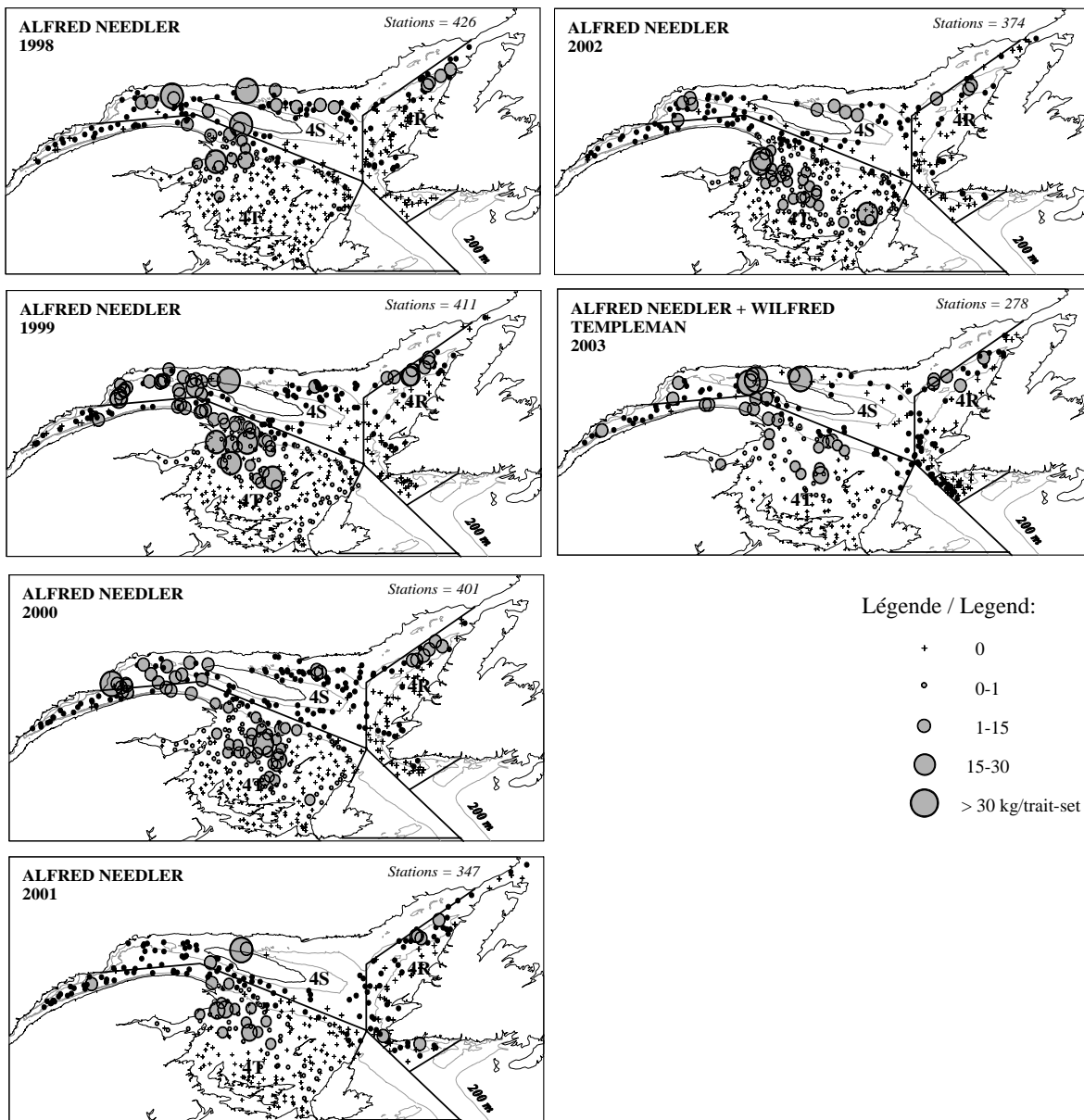


Figure 13. (Suite / Continued).

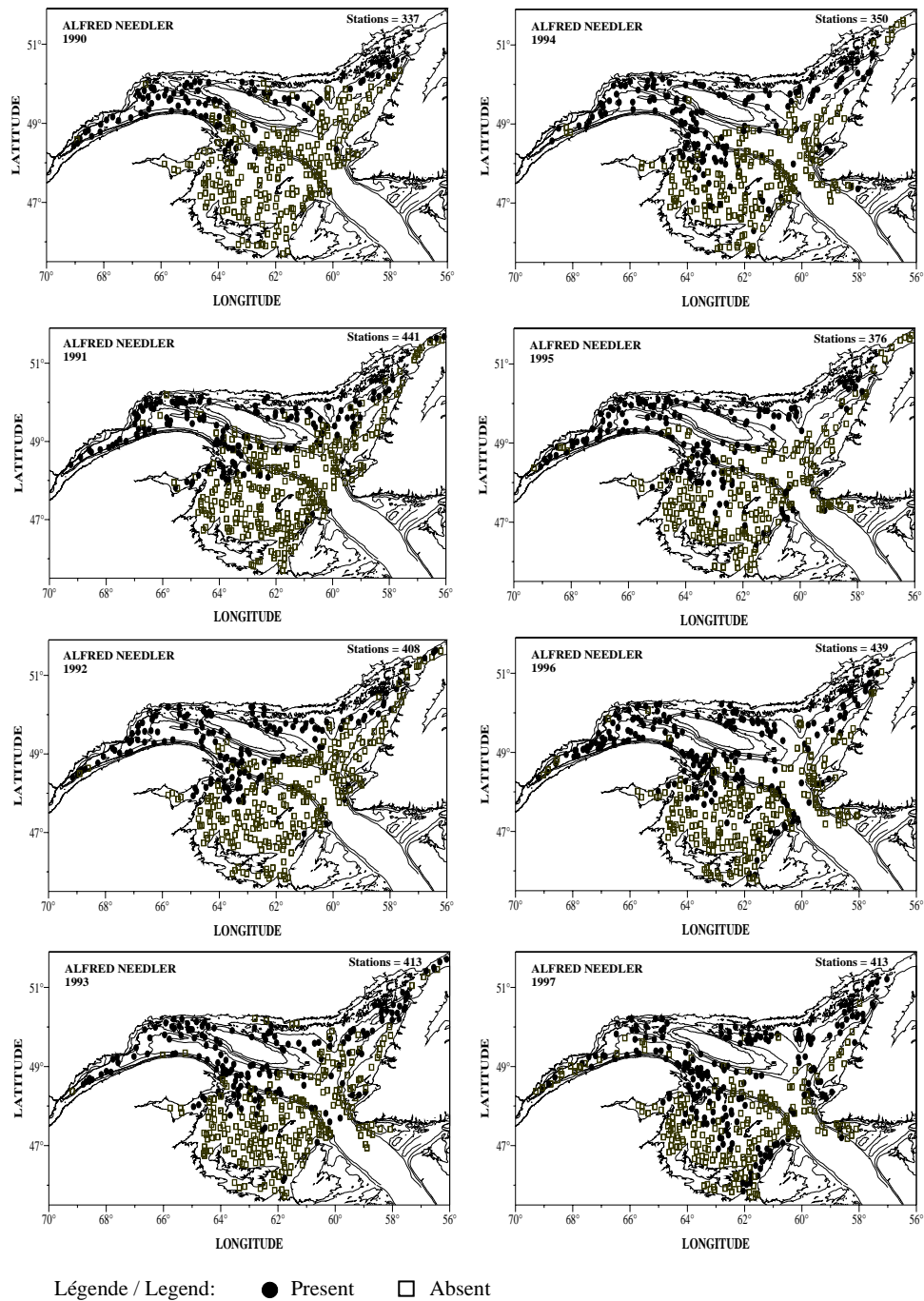


Figure 14. Cartes des présences-absences de capelan des relevés d'abondance des poissons de fond et de la crevette du NGCC *Alfred Needler* et NGCC *Wilfred Templeman* réalisés dans le nord (août) et le sud (septembre) du golfe du Saint-Laurent entre 1990 et 2003 / *Maps of the capelin presence-absences of the CCGS Alfred Needler and CCGS Wilfred Templeman groundfish and shrimp abundance surveys conducted in the northern (August) and southern (September) Gulf of St. Lawrence between 1990 and 2003.*

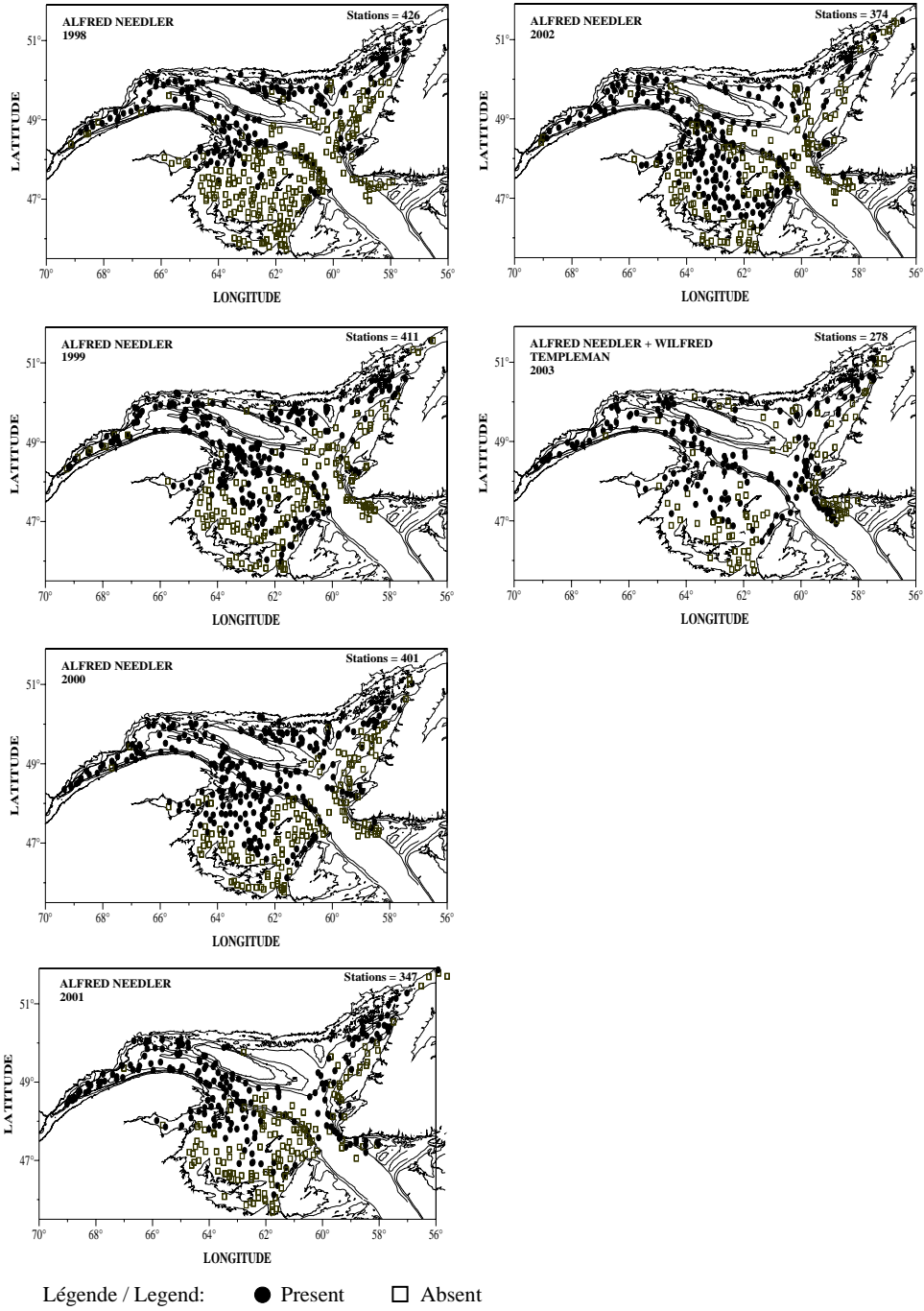


Figure 14. (Suite / Continued).



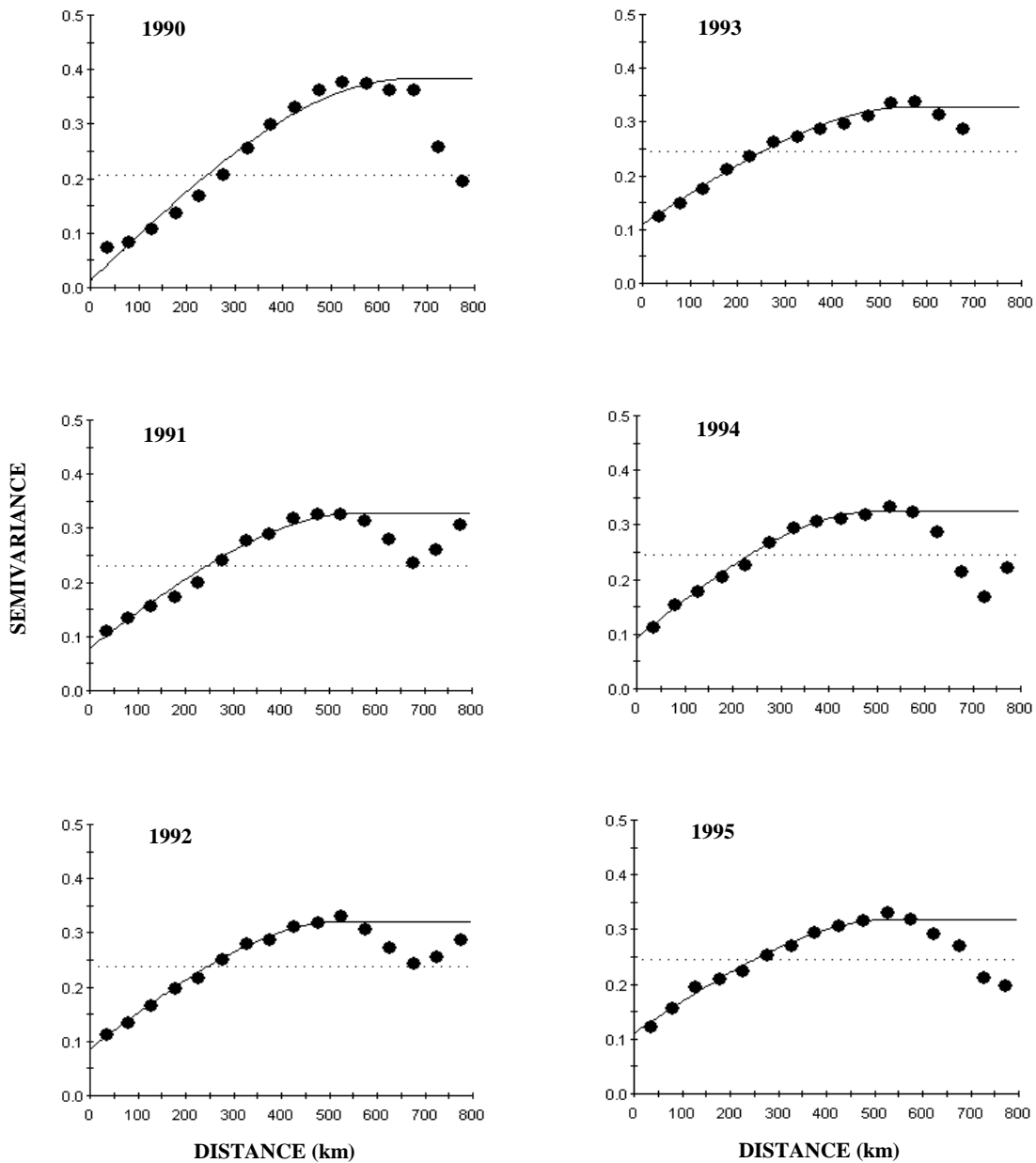


Figure 15. Variogrammes isotropiques annuels des présences-absences du capelan des relevés d'abondance des poissons de fond et de la crevette du NGCC *Alfred Needler* et NGCC *Wilfred Templeman* réalisés dans le nord (août) et le sud (septembre) du golfe du Saint-Laurent entre 1990 et 2003 (la variance des données est représentée par la ligne horizontale pointillée) / *Isotropic variograms of the capelin presence-absences for the CCGS Alfred Needler and CCGS Wilfred Templeman groundfish and shrimp abundance surveys conducted in the northern (August) and southern (September) Gulf of St. Lawrence between 1990 and 2003 (the dotted horizontal line represents the data variance).*

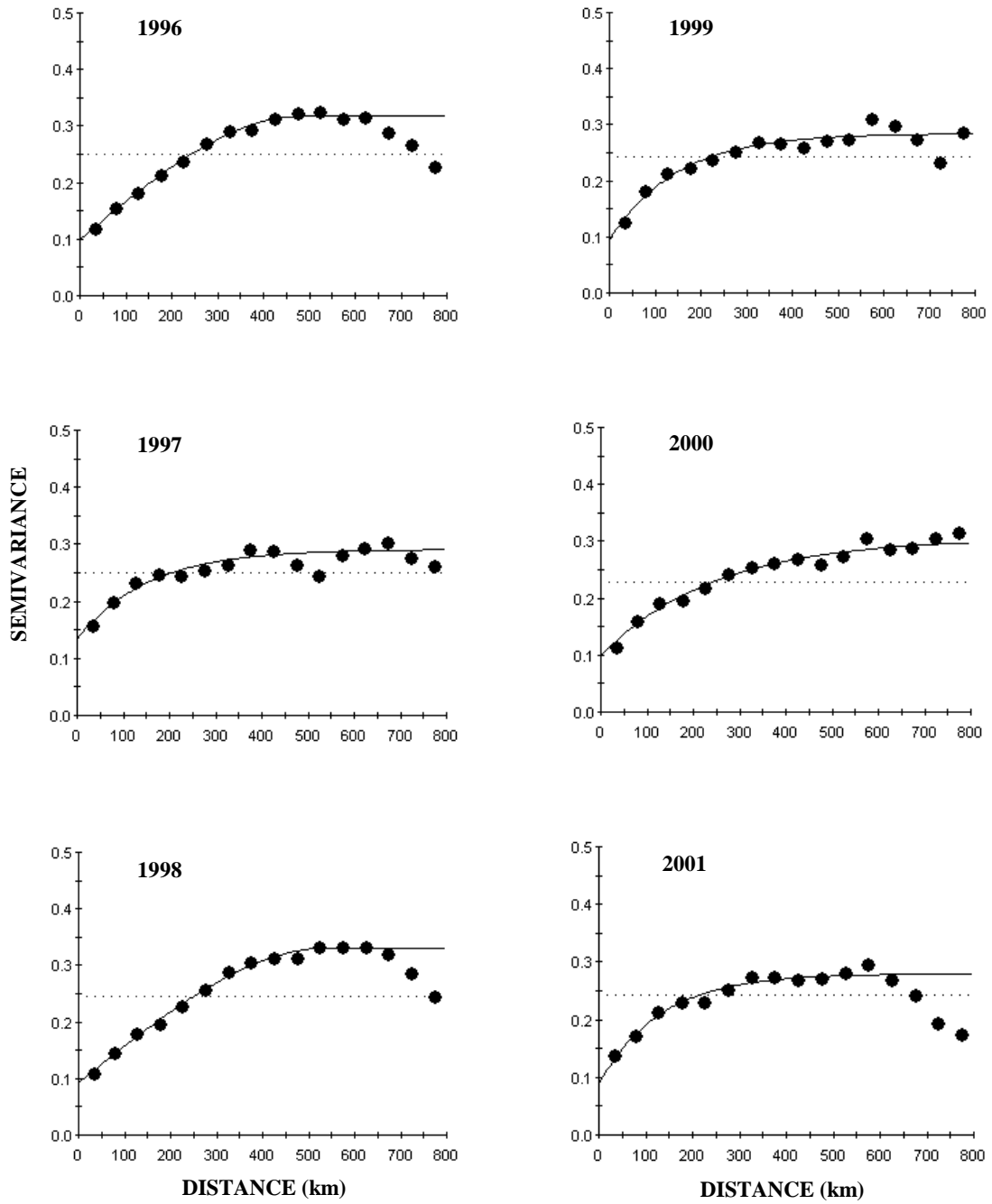


Figure 15. (Suite / Continued).

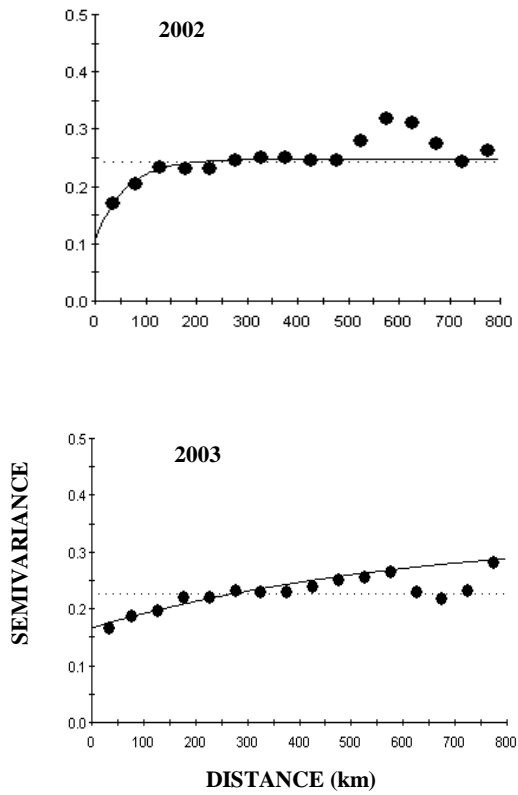


Figure 15. (Suite / Continued).

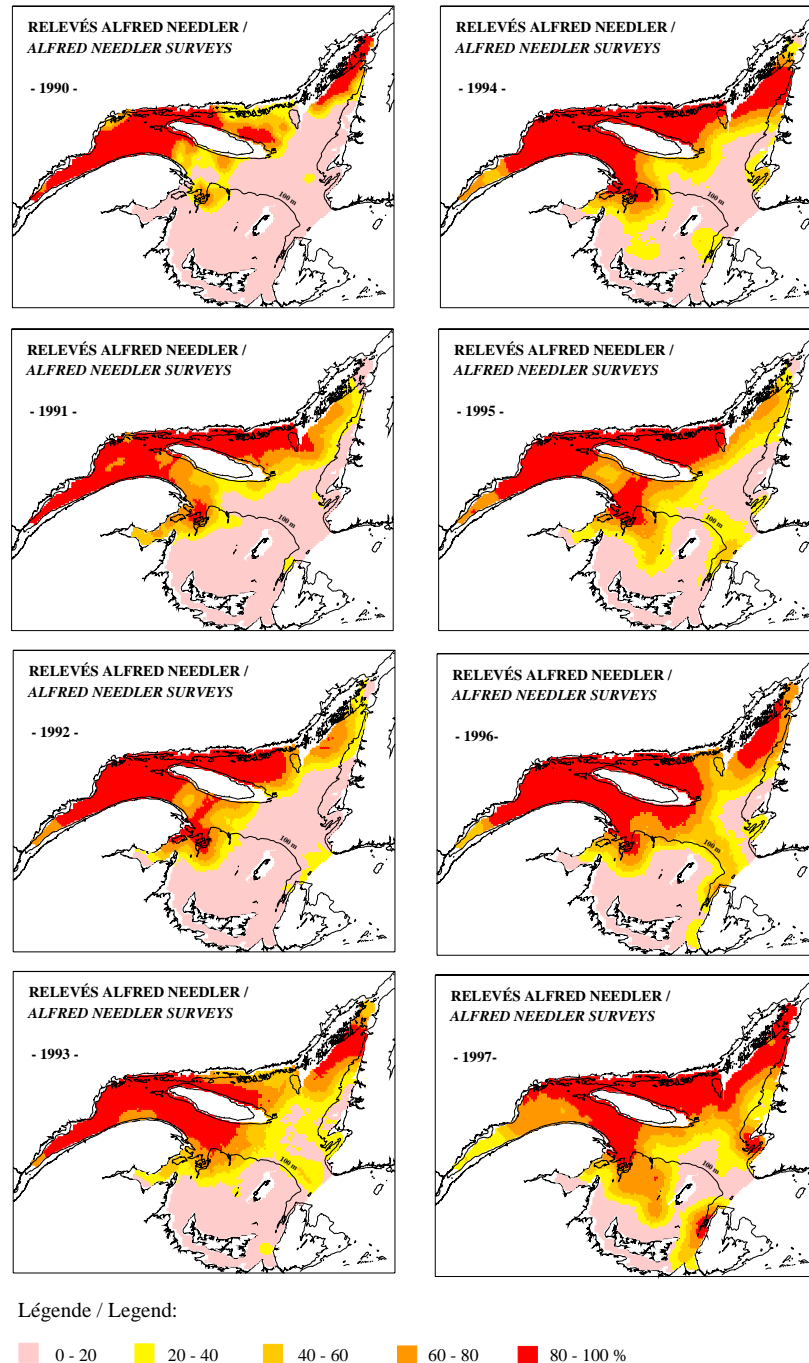


Figure 16. Surfaces des probabilités (%) de la présence du capelan pour les relevés d'abondance des poissons de fond et de la crevette du NGCC *Alfred Needler* et NGCC *Wilfred Templeman* réalisés dans le nord (août) et le sud (septembre) du golfe du Saint-Laurent entre 1990 et 2003 / *Probability areas (%) of the capelin occurrence for the CCGS Alfred Needler and CCGS Wilfred Templeman groundfish and shrimp abundance surveys conducted in the northern (August) and southern (September) Gulf of St. Lawrence between 1990 and 2003.*