

Fig. 2 Distribution of small vessel (<500 t; LOA <=100') shrimp catches (tons) in Div. 2J-3K (SFA 6) during 2001. (Observer data aggregated into 10 min. squares.)

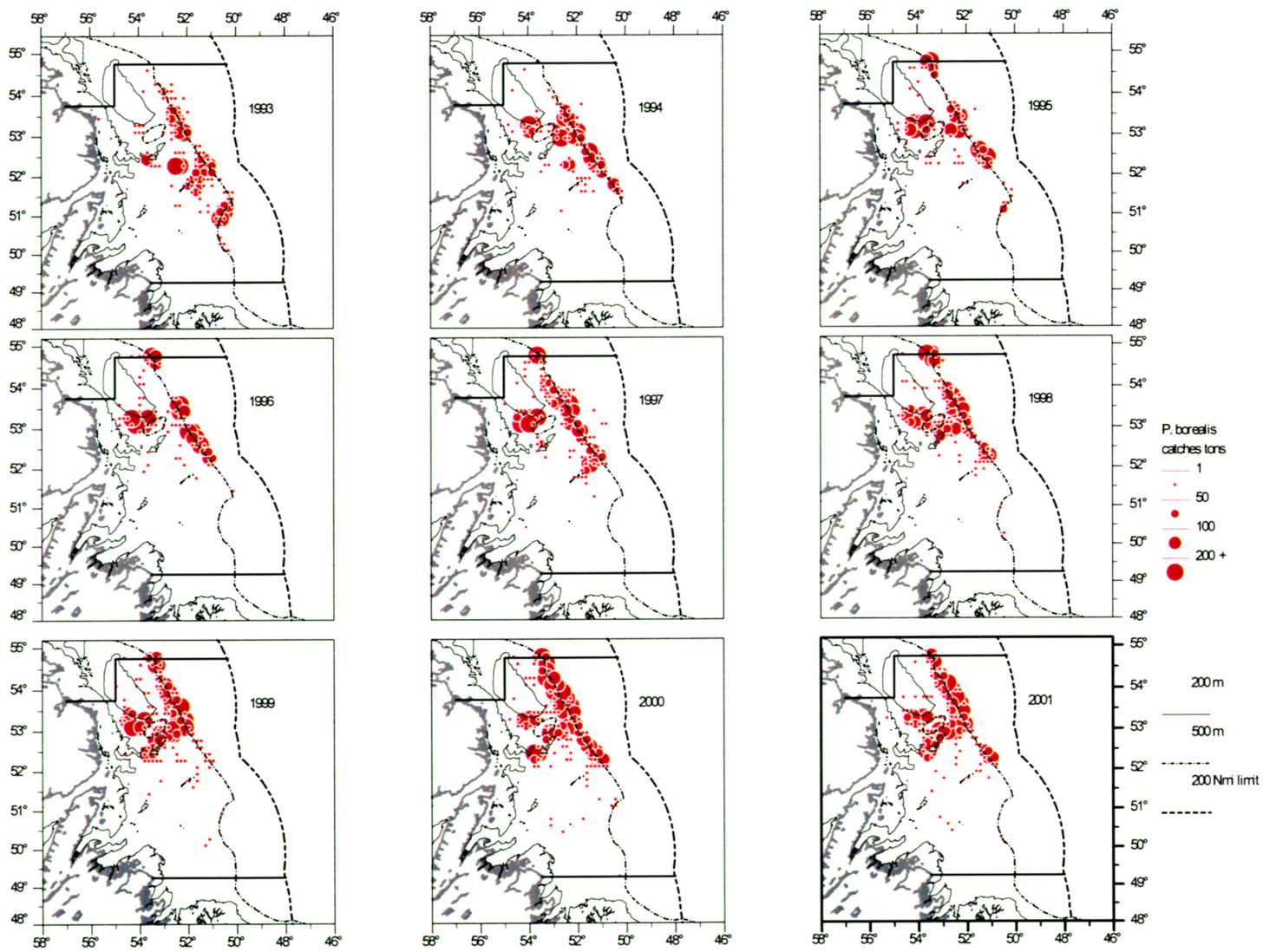


Fig. 3 Distribution of large vessel (>50 t) shrimp catches (tons) in Div. 2J-3K (SFA 6), 1993 - 2001. (Logbook data aggregated into 10 min. squares.)

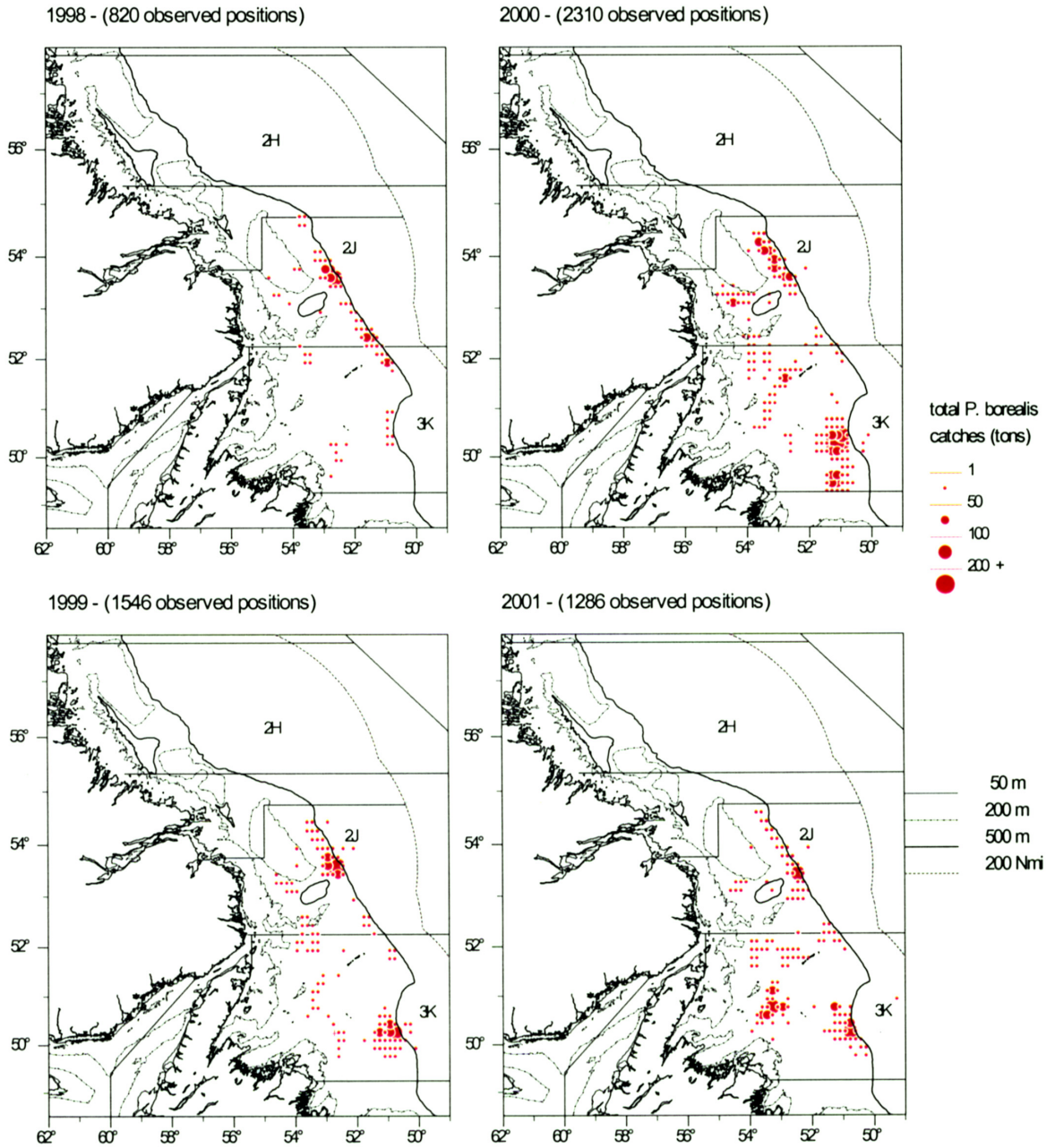


Fig. 4 Distribution of small vessel (<500 t; LOA <100') fishing effort in Div. 2J-3K (SFA 6), 1998 - 2001. (Observer data aggregated into 10 min. squares.)

Fig. 5 Standardized catch...numbers-per-hour...000s in NAFO Division 3K-2J (SFA6), 1992-2001.
 Solid line = Males, Broken line = Females.

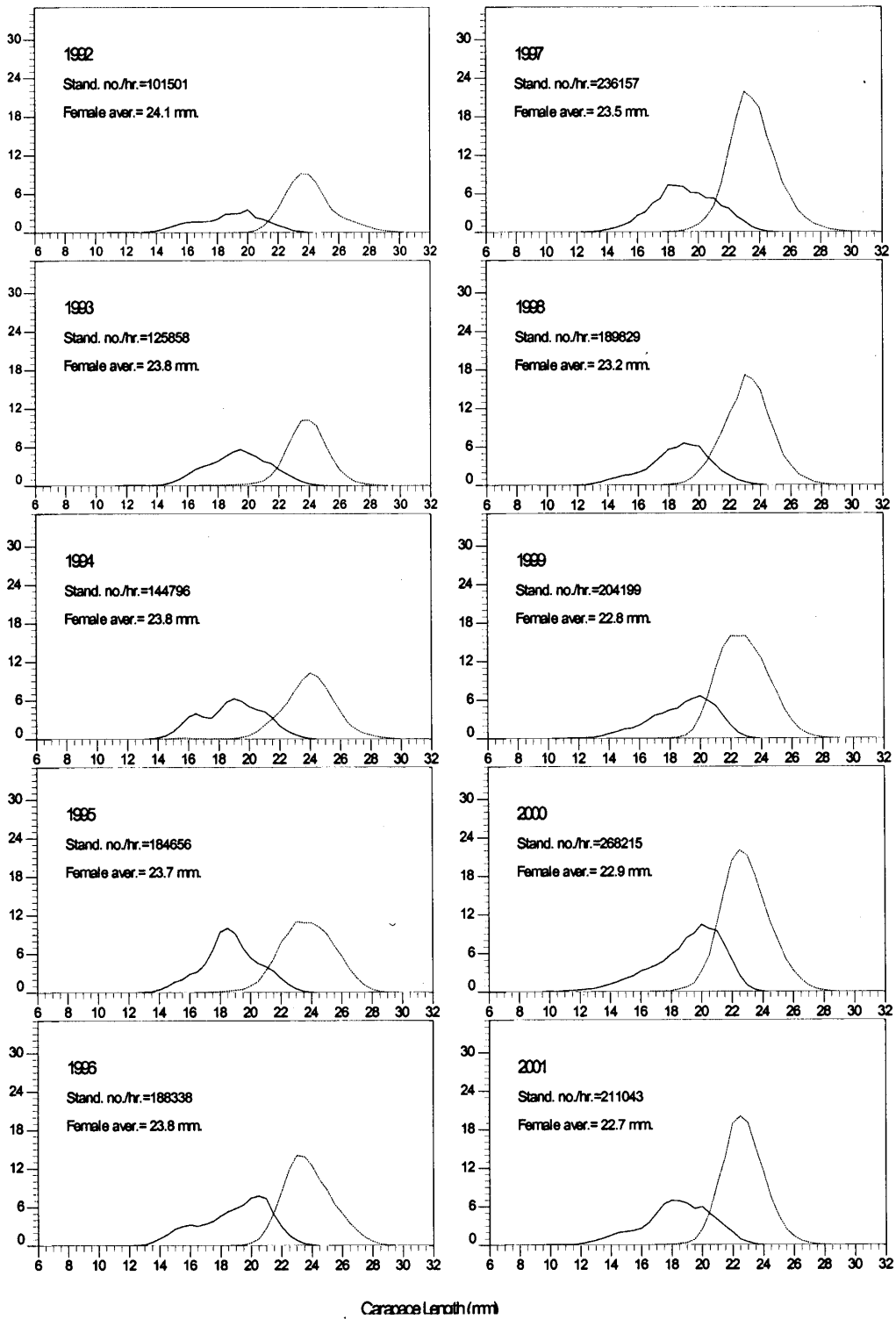
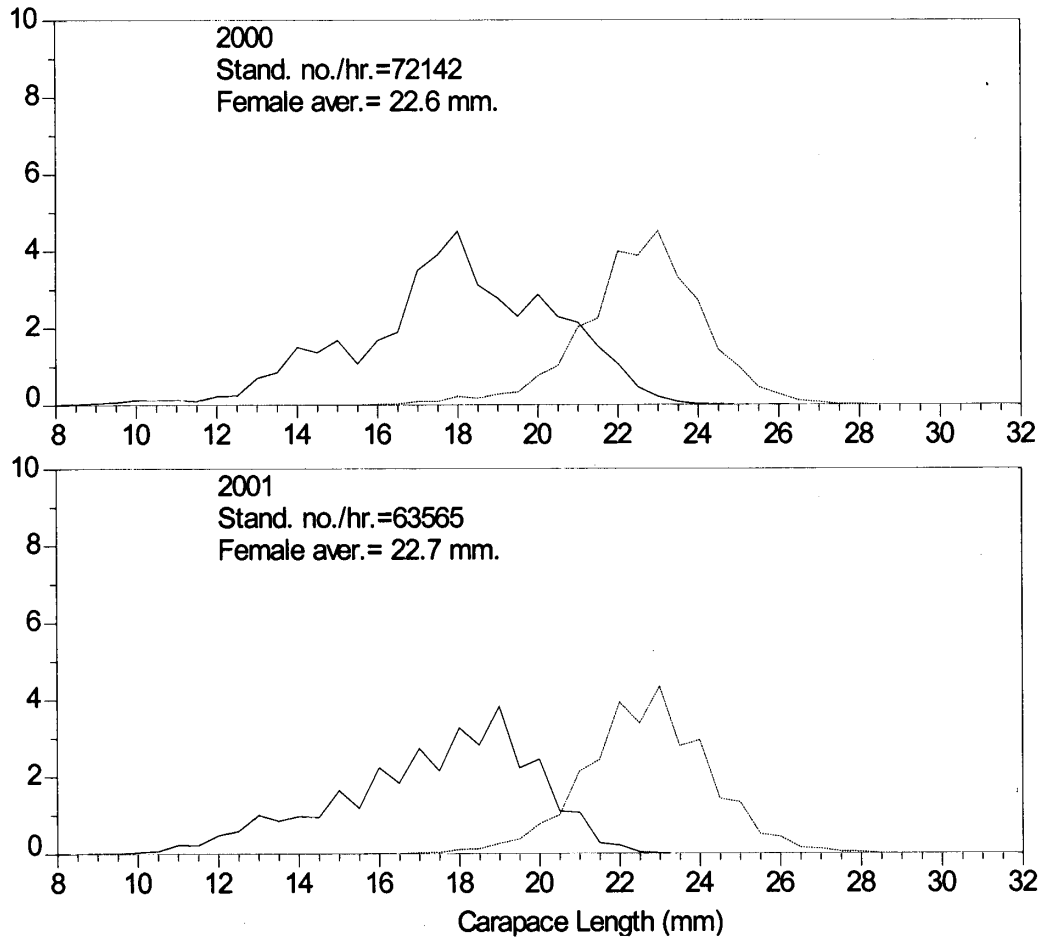


Fig. 6 Standardized catch ...numbers-per-hour..000s from small vessels,
NAFO Division 3K-2J (SFA 6), 2000-2001. Solid line = Males, Broken line = Females.



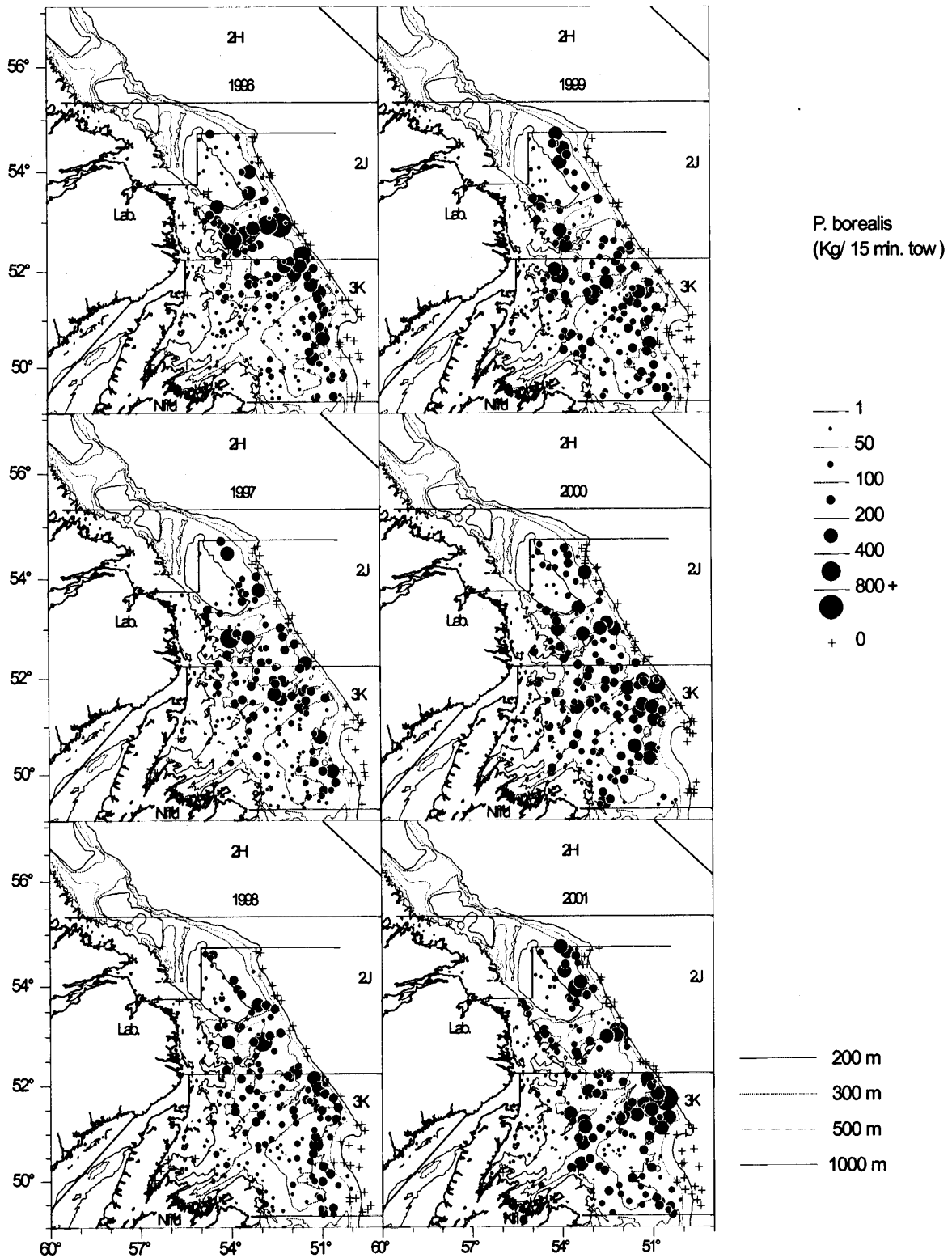


Fig. 7 Catches of shrimp (*Pandalus borealis*) obtained during the 1996 - 2001 fall multi-species surveys into Hawke Channel + 3K (SFA 6) using a Campelen 1800 shrimp trawl. (standard 15 min. tows)

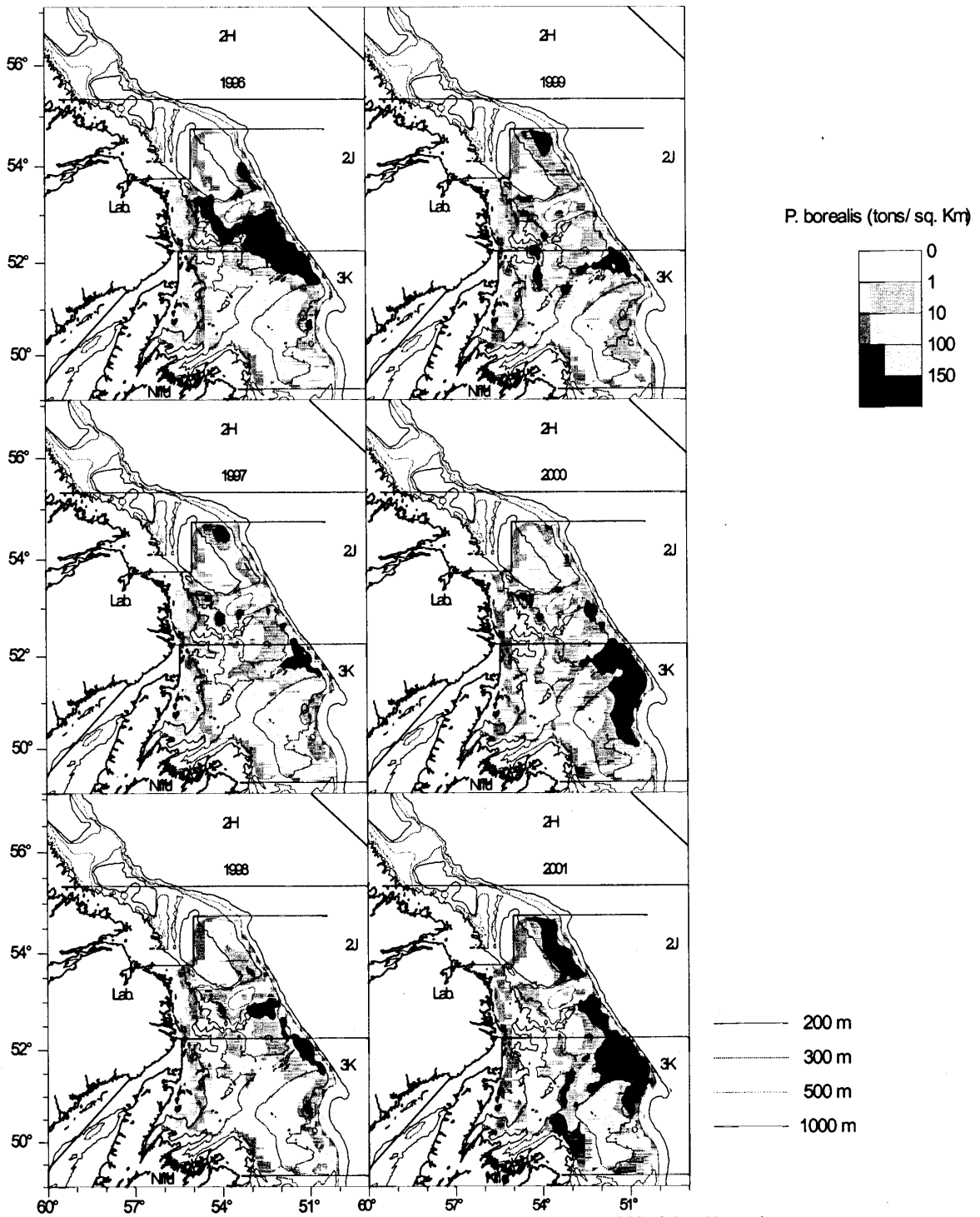


Fig. 8 Densities of shrimp (*Pandalus borealis*) obtained during the 1996 - 2001 fall multi-species surveys into Hawke Channel + 3K (SFA 6) using a Campelen 1800 shrimp trawl. (standard 15 min. tows)