

Figure 1. Map of the Grand Banks showing various banks, basins and NAFO Divisions.

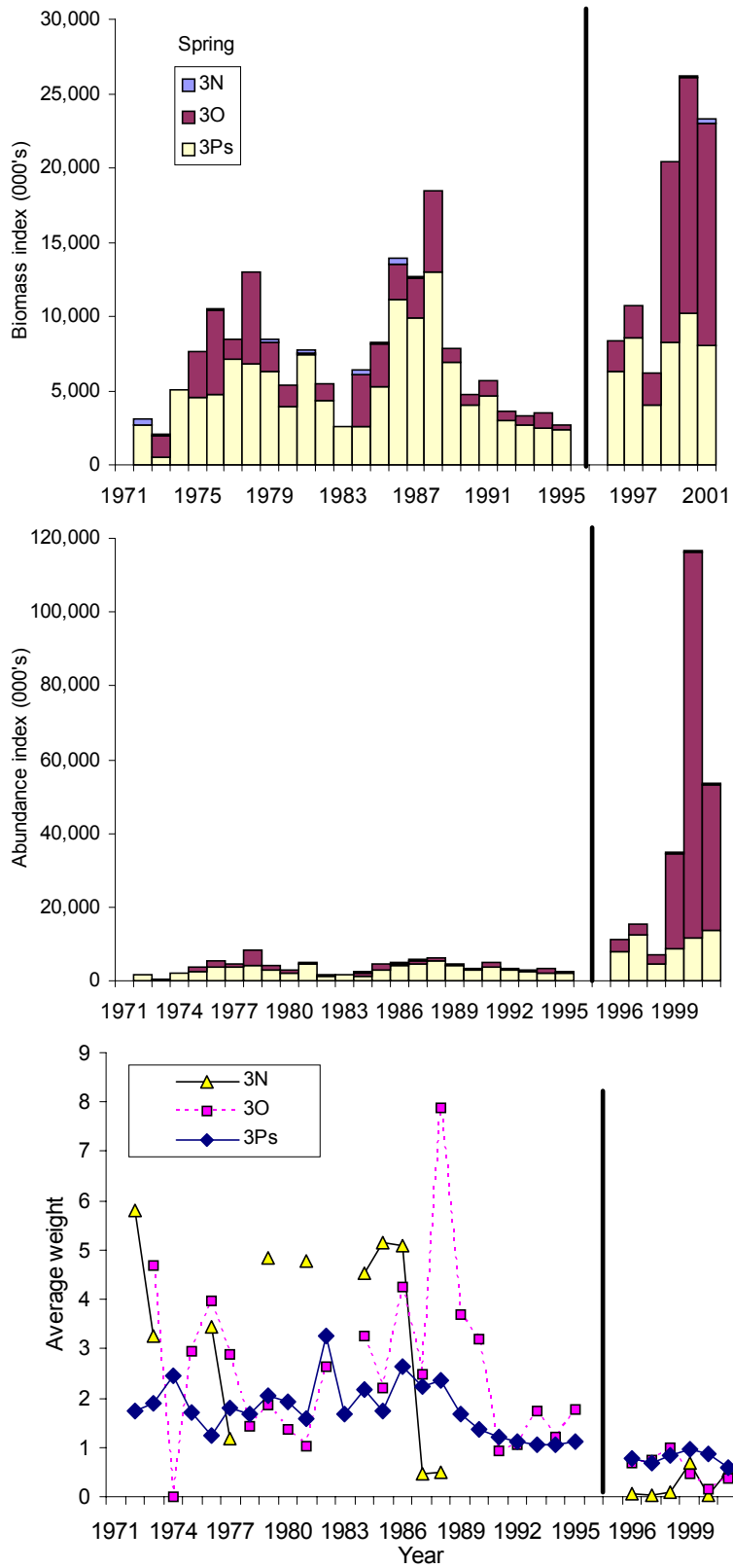


Figure 2a. Spring research survey biomass and abundance indices for white hake in NAFO Divisions 3N, 3O and subdivision 3Ps, 1971-2001.

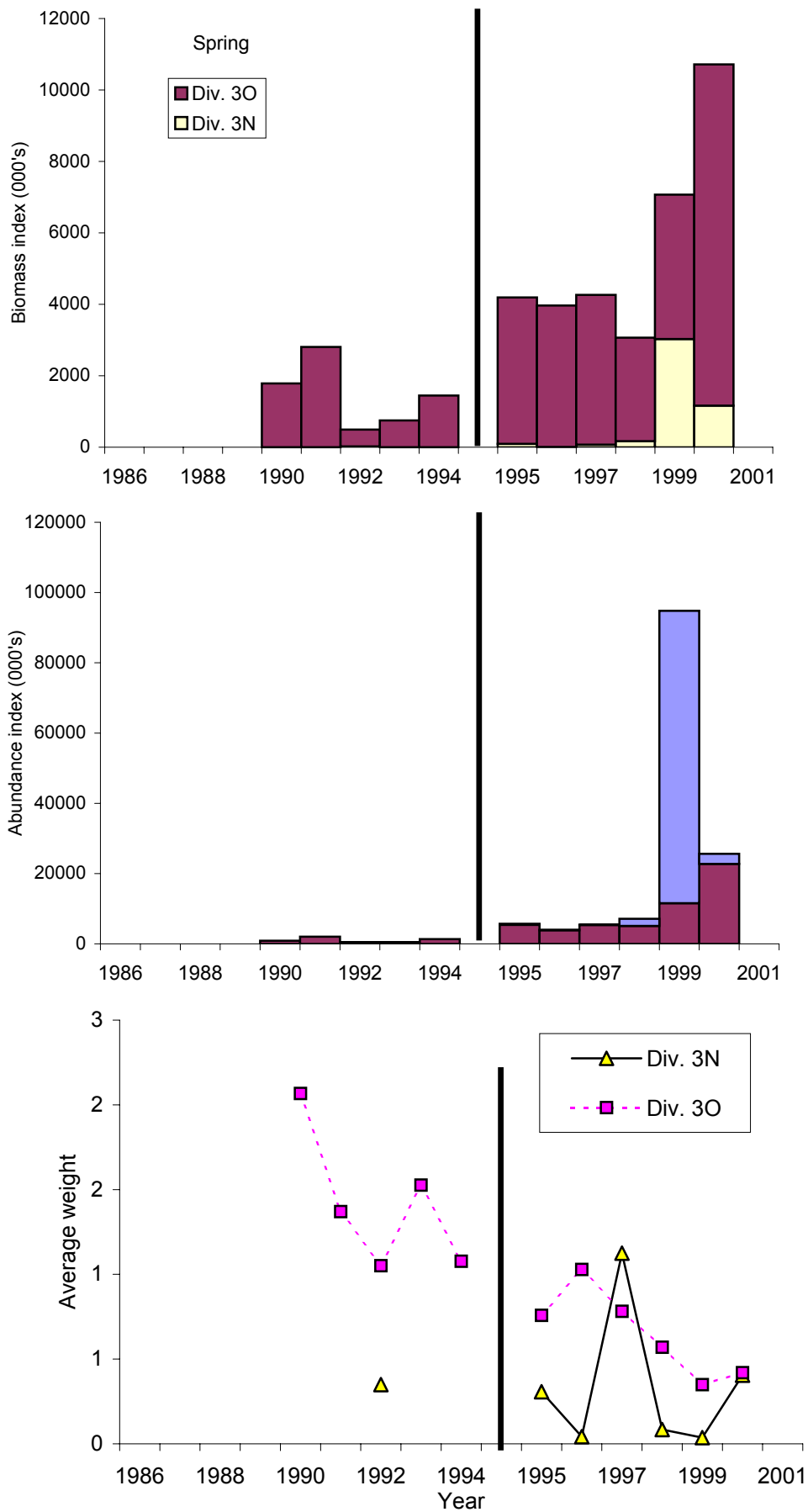


Figure 2b. Fall research survey biomass and abundance indices for white hake in NAFO Divisions 3N and 3O, 1990-2001. Dotted line is for Div. 3N, the solid line Div. 3O in the mean weight graph.

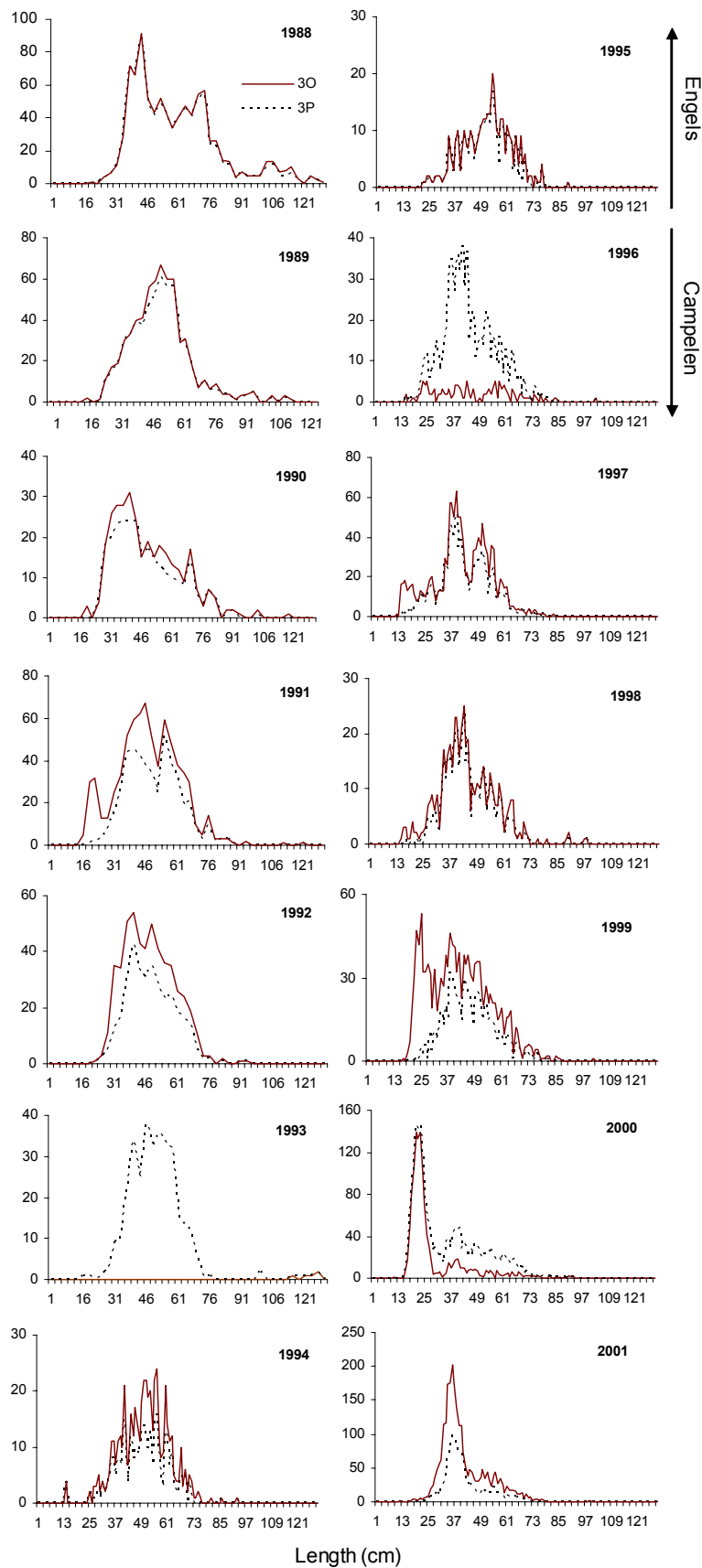


Figure 3a. Length frequencies of White Hake caught in NAFO divisions 3O (solid line) and 3P (dashed line) during spring research in surveys, 1988-2001.

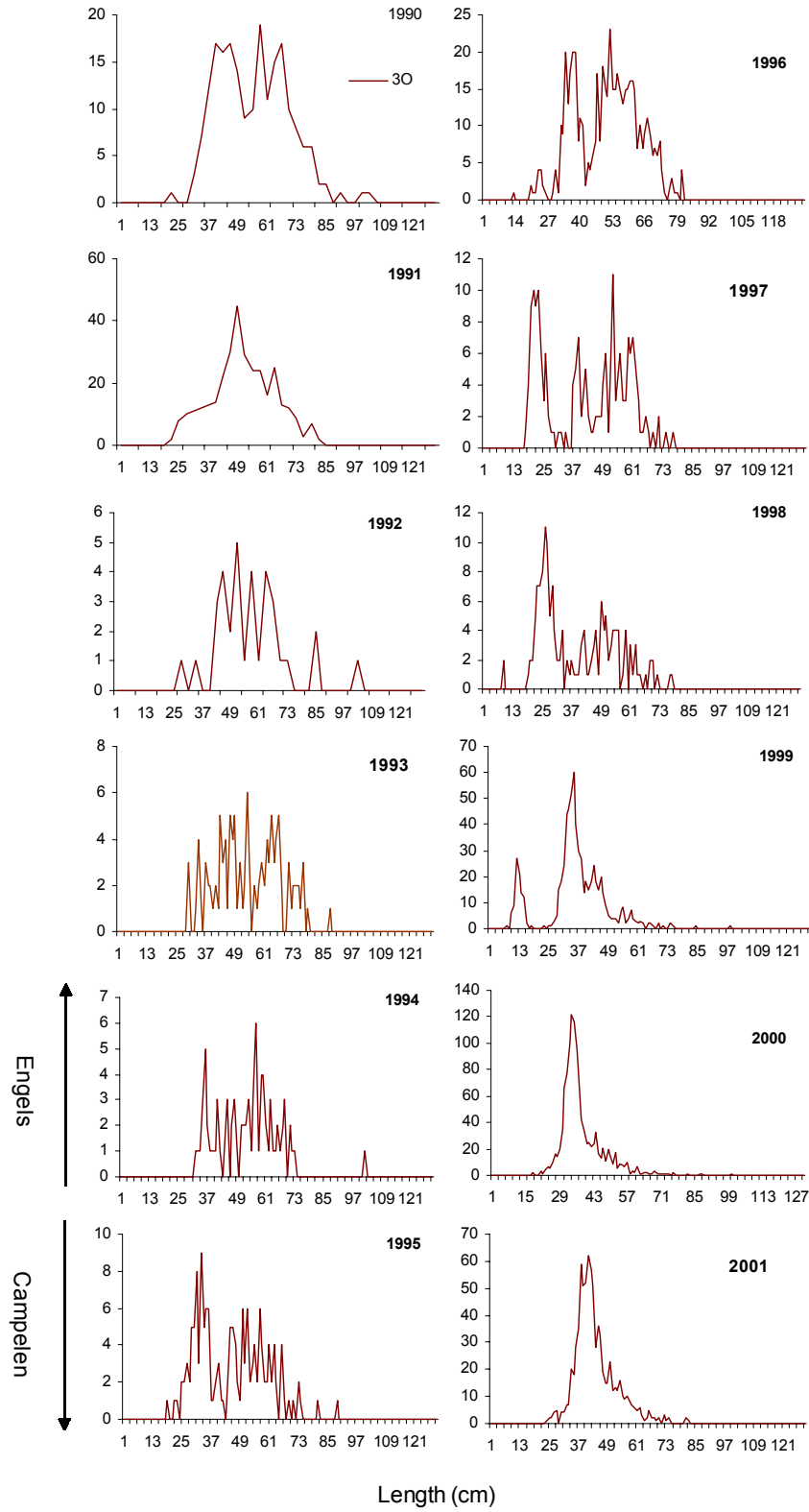


Figure 3b. Length frequencies of White Hake caught in NAFO divisions 3O during fall research in surveys, 1990-2001.

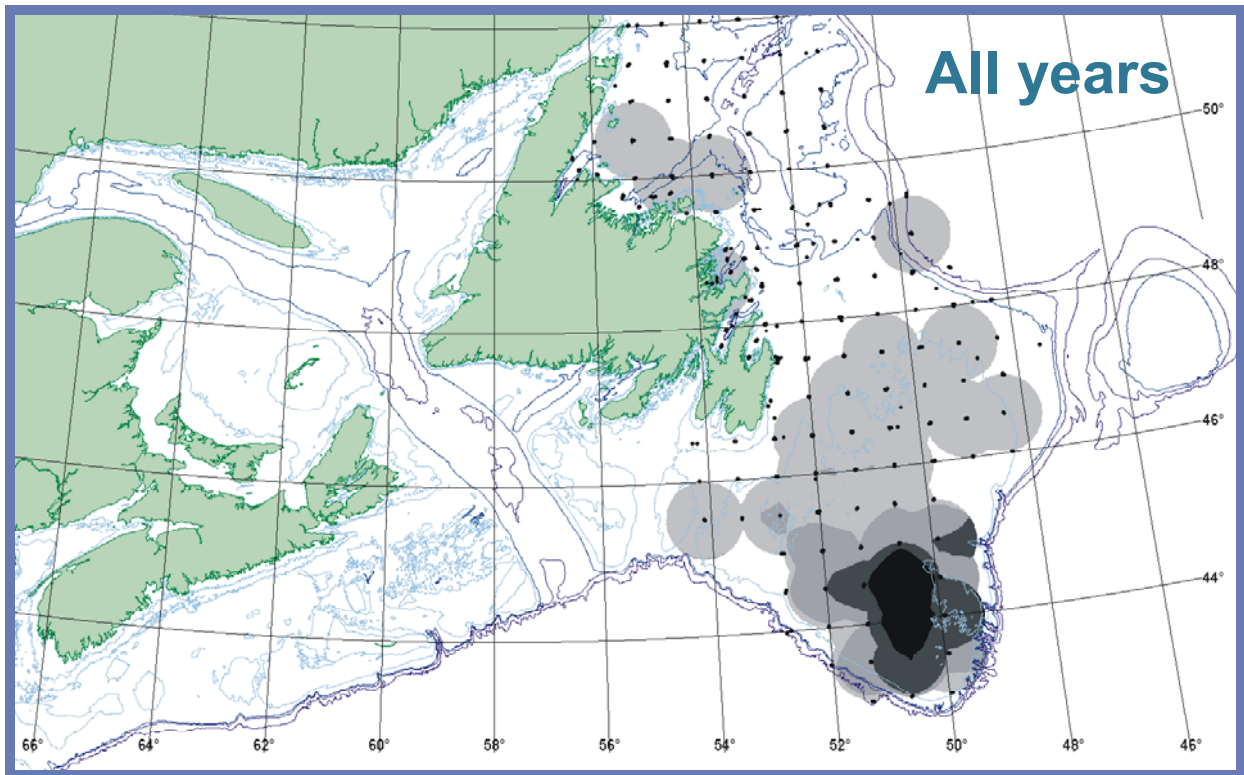


Figure 4. Distribution of young of the year white hake taken during 1996-2000 (Aug. Sept.) using IYGPT trawl gear. Darkest shade shows areas of highest concentration. Perimeter around the lightest shade demarcates where any white hake were taken

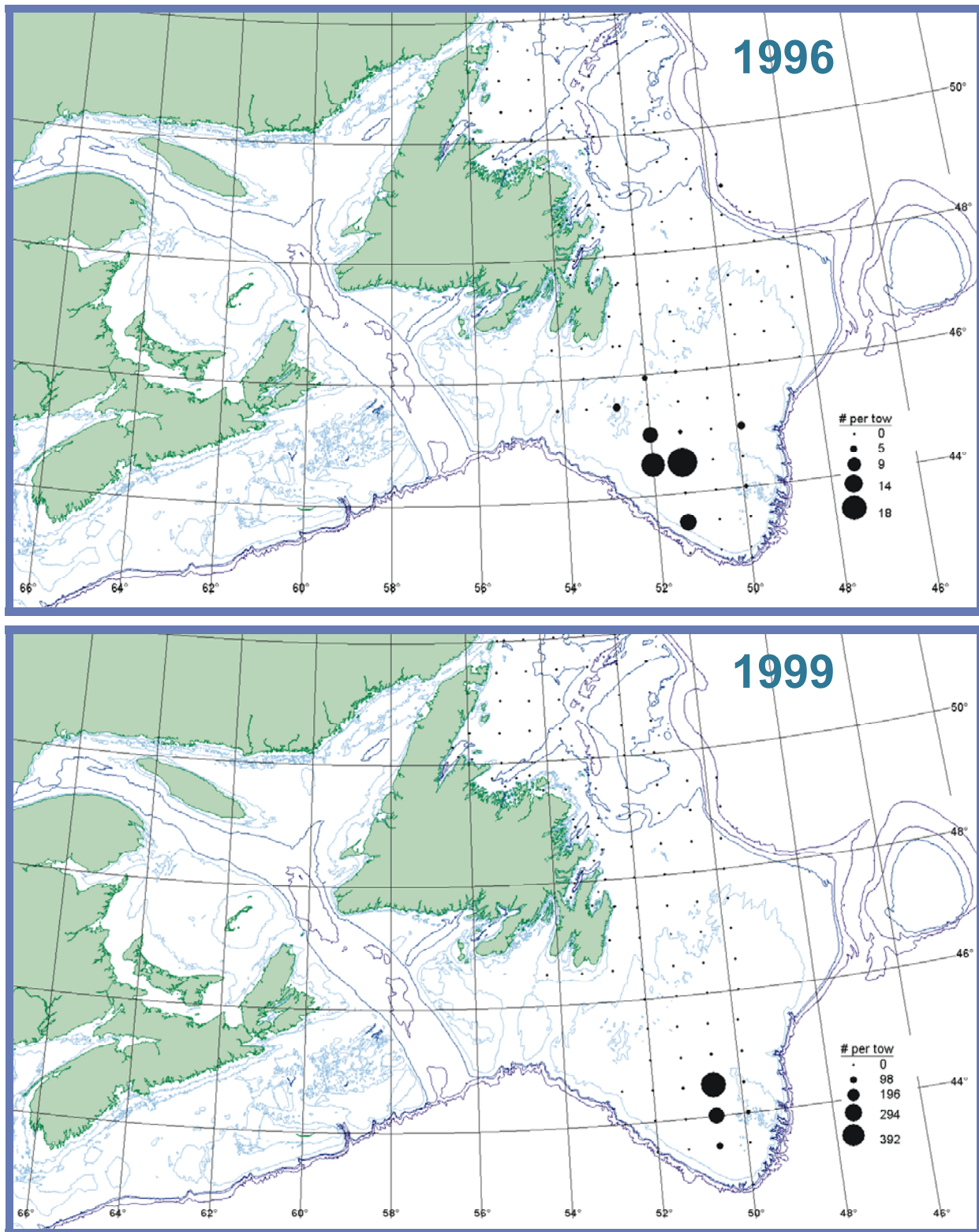


Figure 5. Distribution of young of the year white hake taken during 1996 and 1999 (Aug. Sept.) using IYGPT trawl gear. Larger circles depict larger numbers per tow.