

Figure 23. Mean fish lengths (mm) by sample number, sample type, and stratum, from 1997 Fortune Bay acoustic survey.

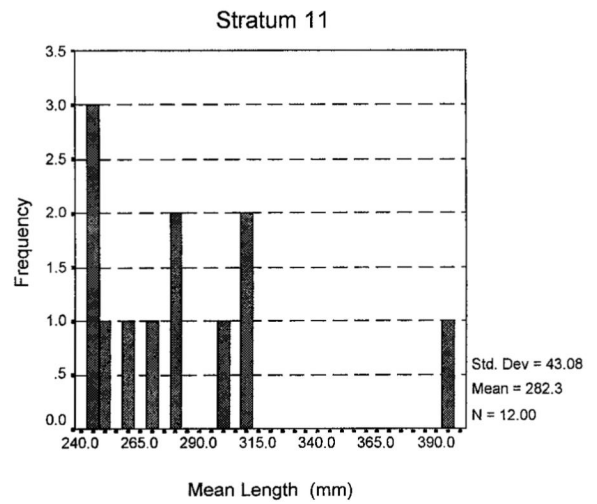
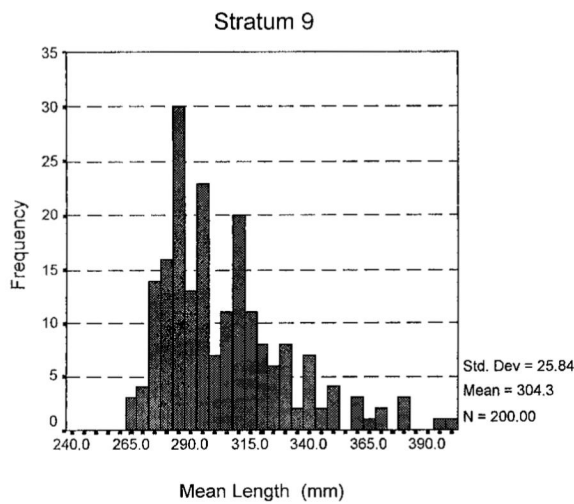
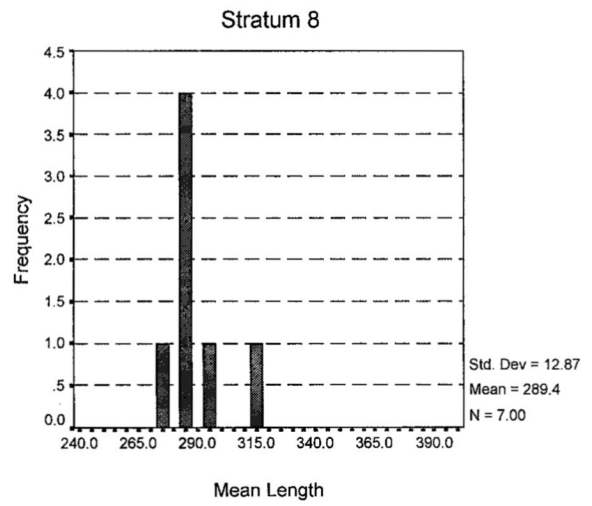
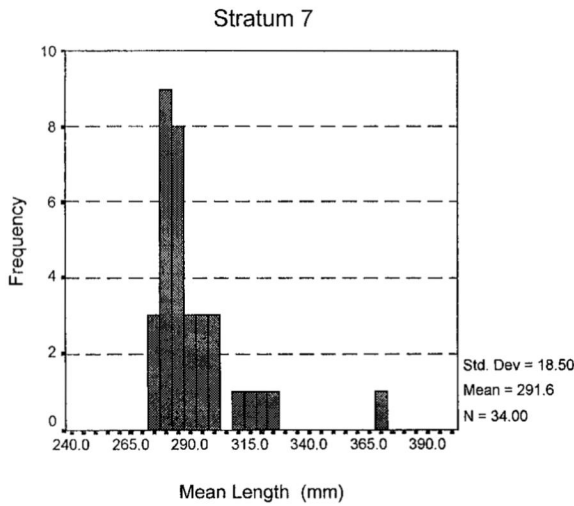
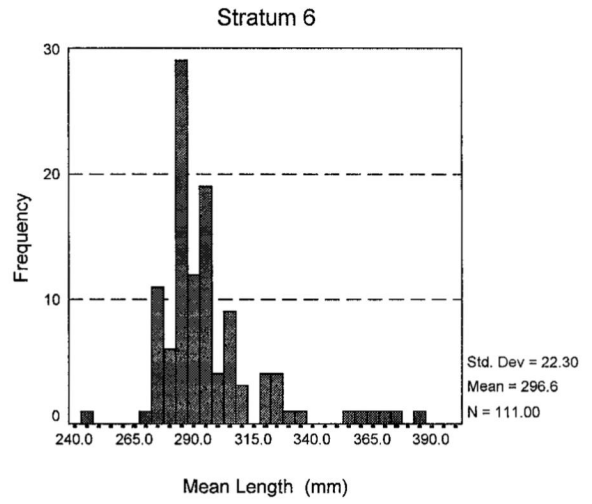
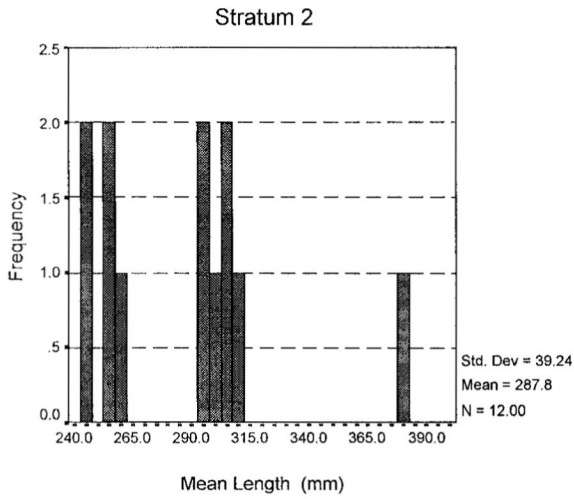
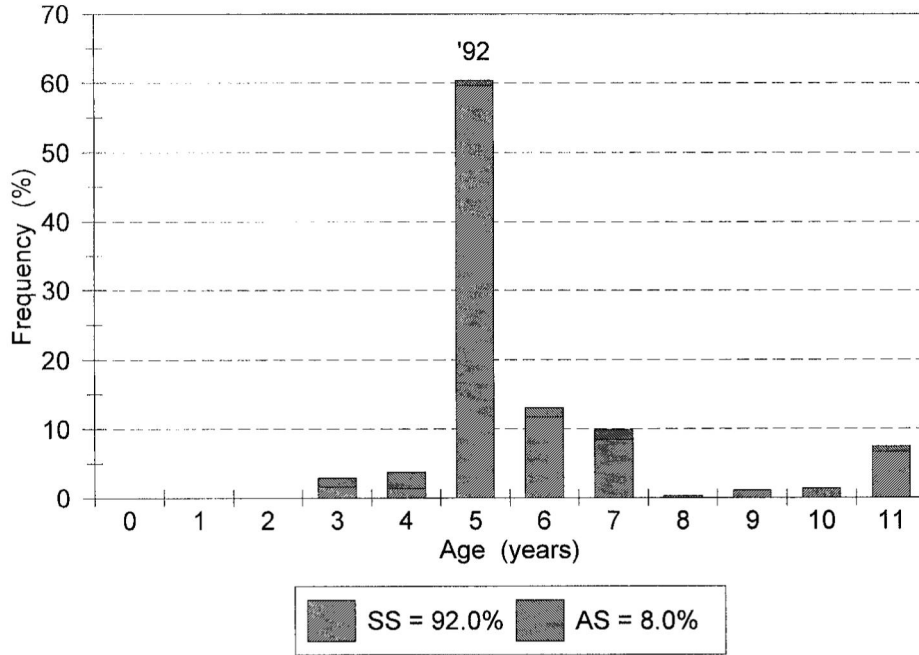


Figure 24. Length distributions of biological samples, by stratum, from 1997 Fortune Bay acoustic survey.

1997 FB Acoustic Survey
Population Numbers at Age



1995 FB Acoustic Survey
Population Numbers at Age

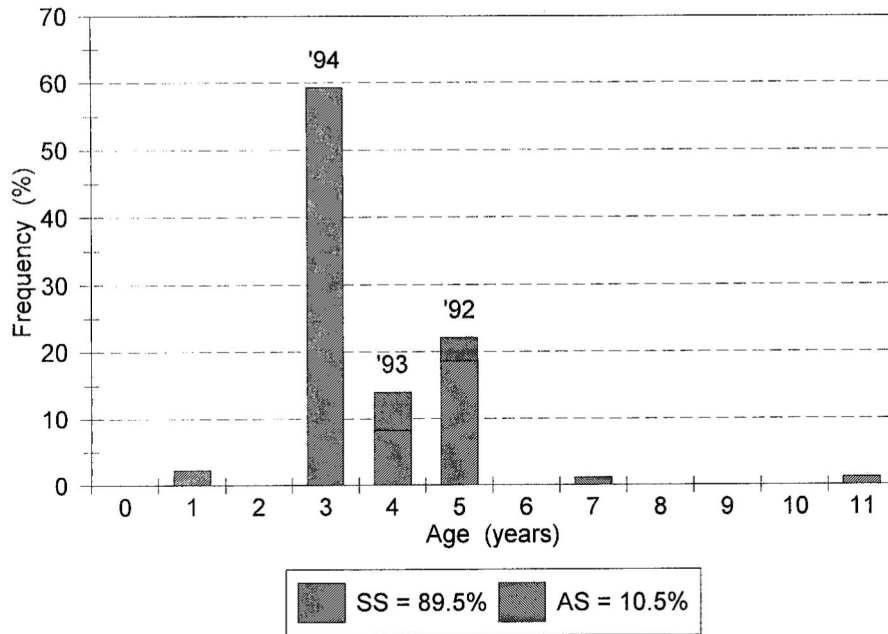


Figure 25. Age distributions of herring from the 1997 and 1995 Fortune Bay acoustic surveys.

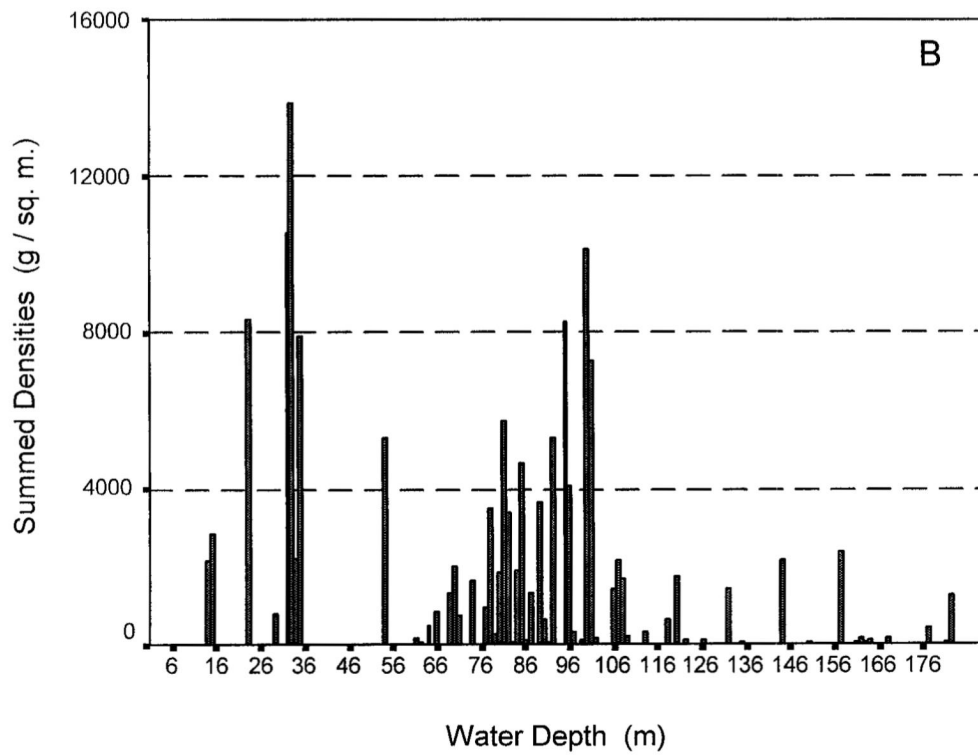
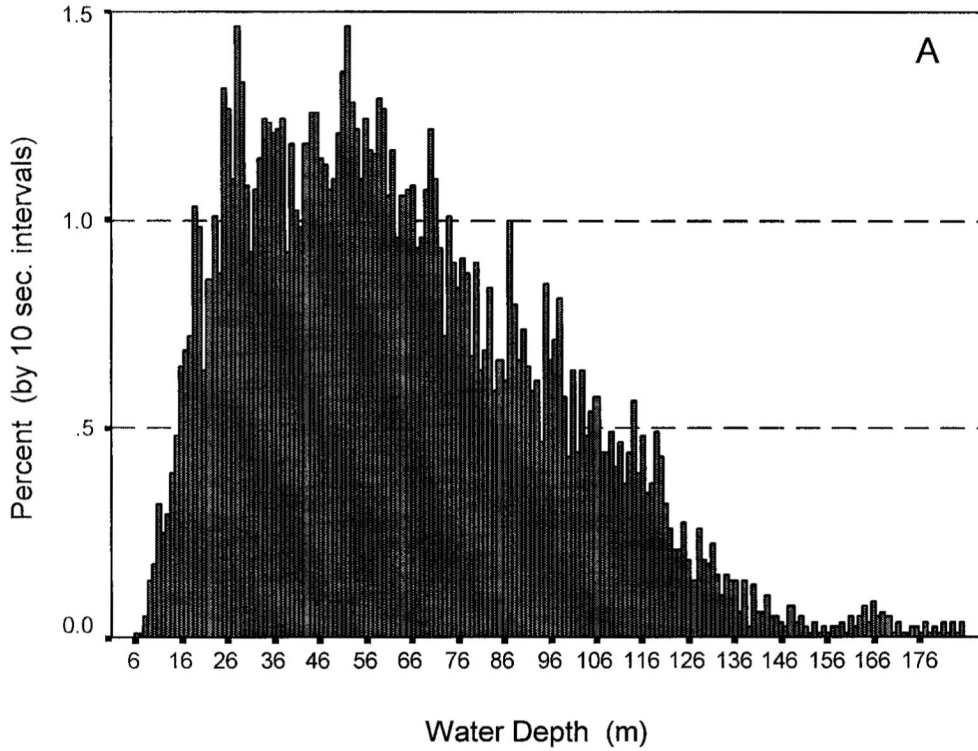


Figure 26. Distribution of acoustic sampling by water depth (Panel A) and summed densities of herring by water depth (Panel B) from the 1997 Fortune Bay acoustic survey.

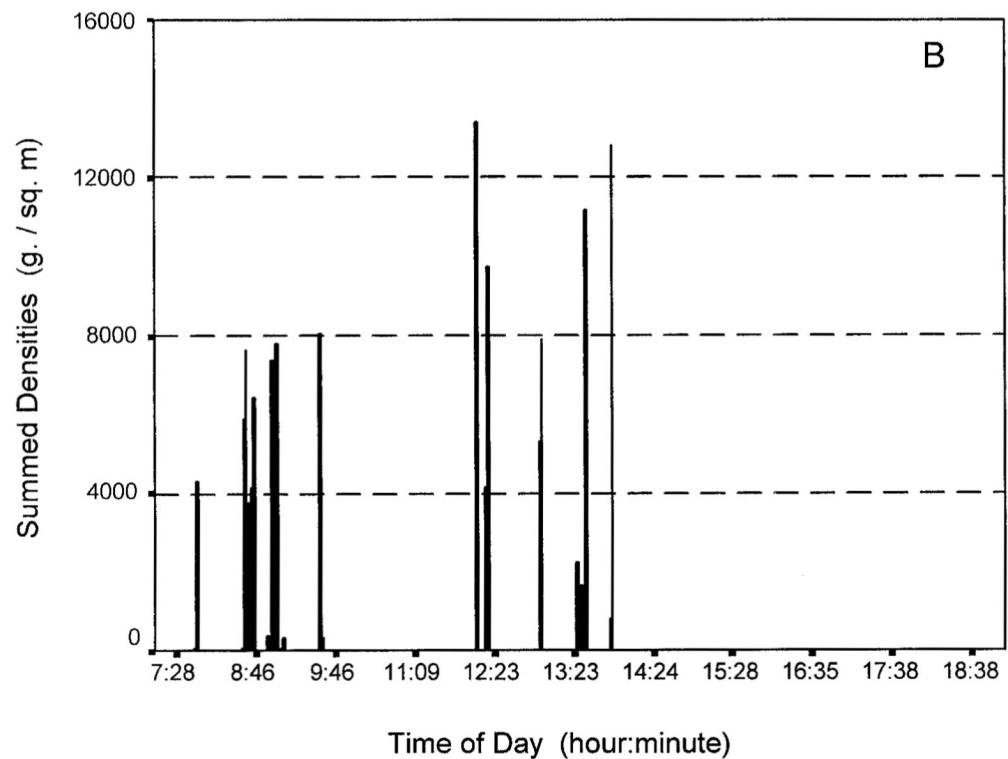
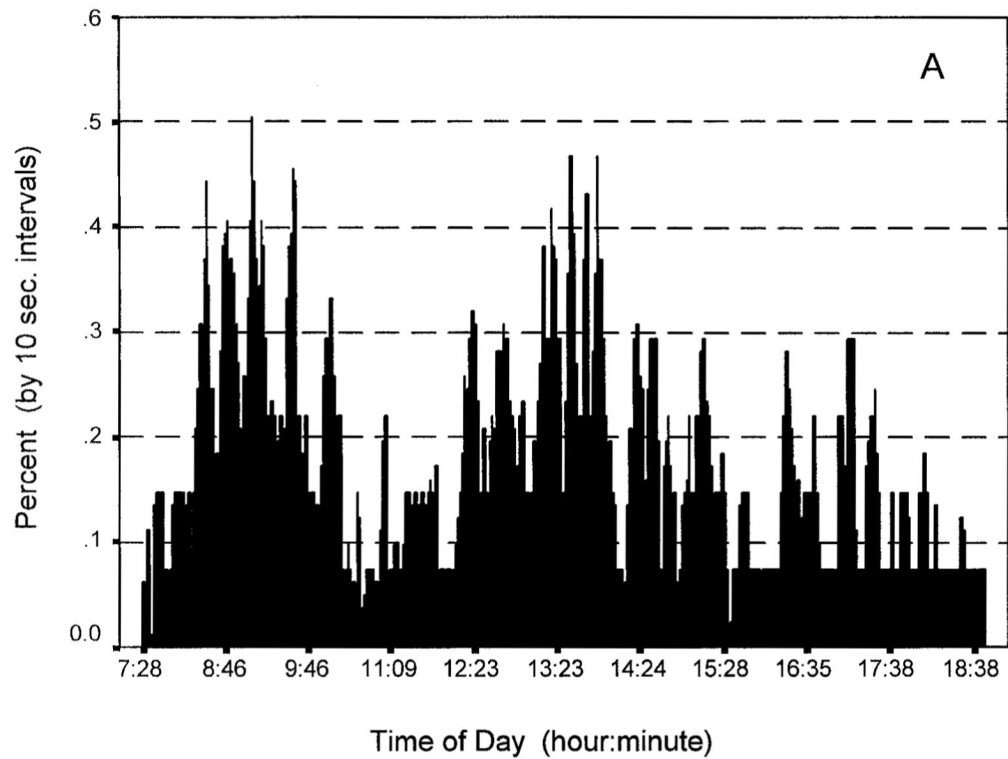


Figure 27. Distribution of acoustic sampling by time of day (Panel A) and summed densities of herring by time of day (Panel B) from the 1997 Fortune Bay acoustic survey.

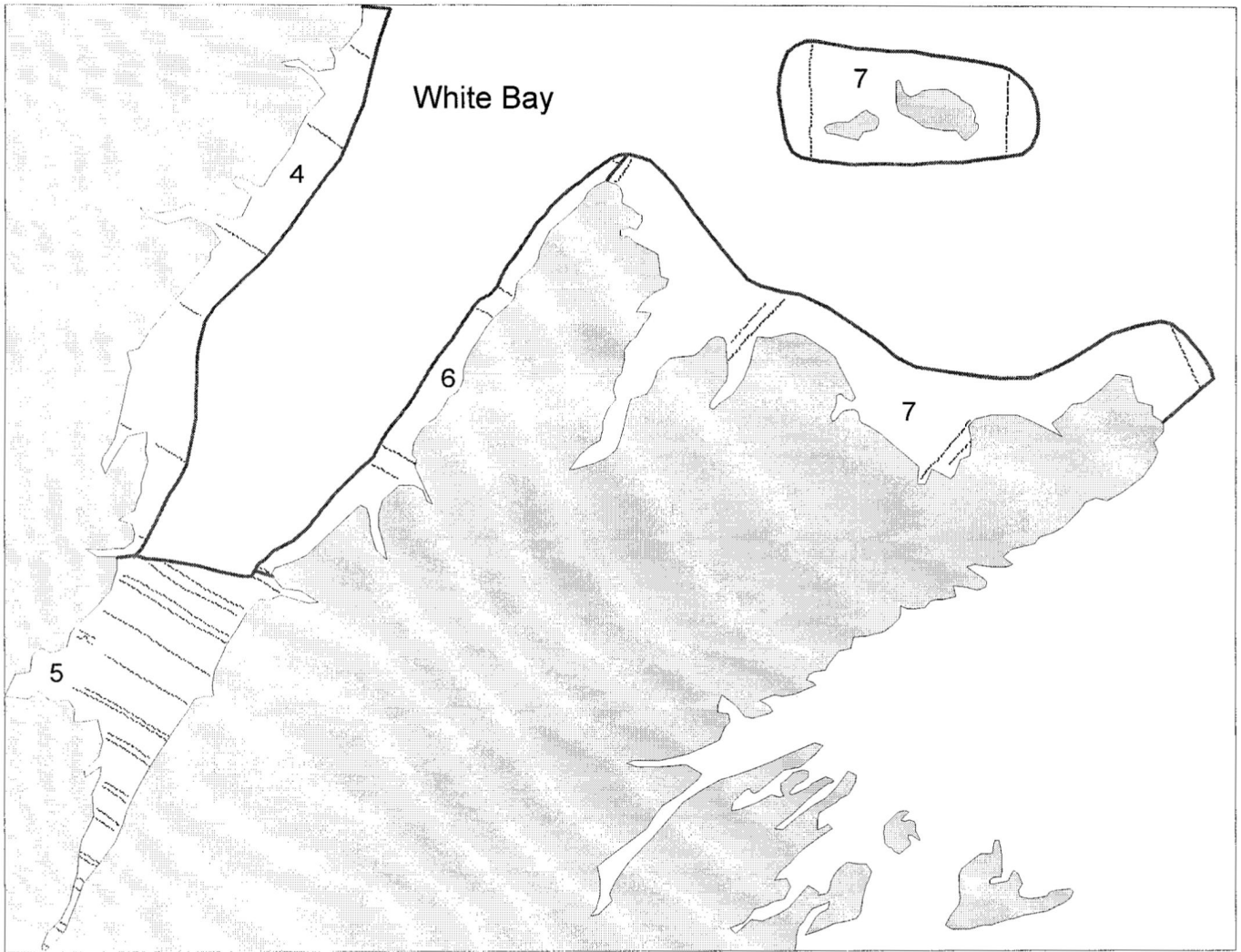


Figure 28. Area map of White Bay indicating survey strata and transects for the 1997 acoustic survey.

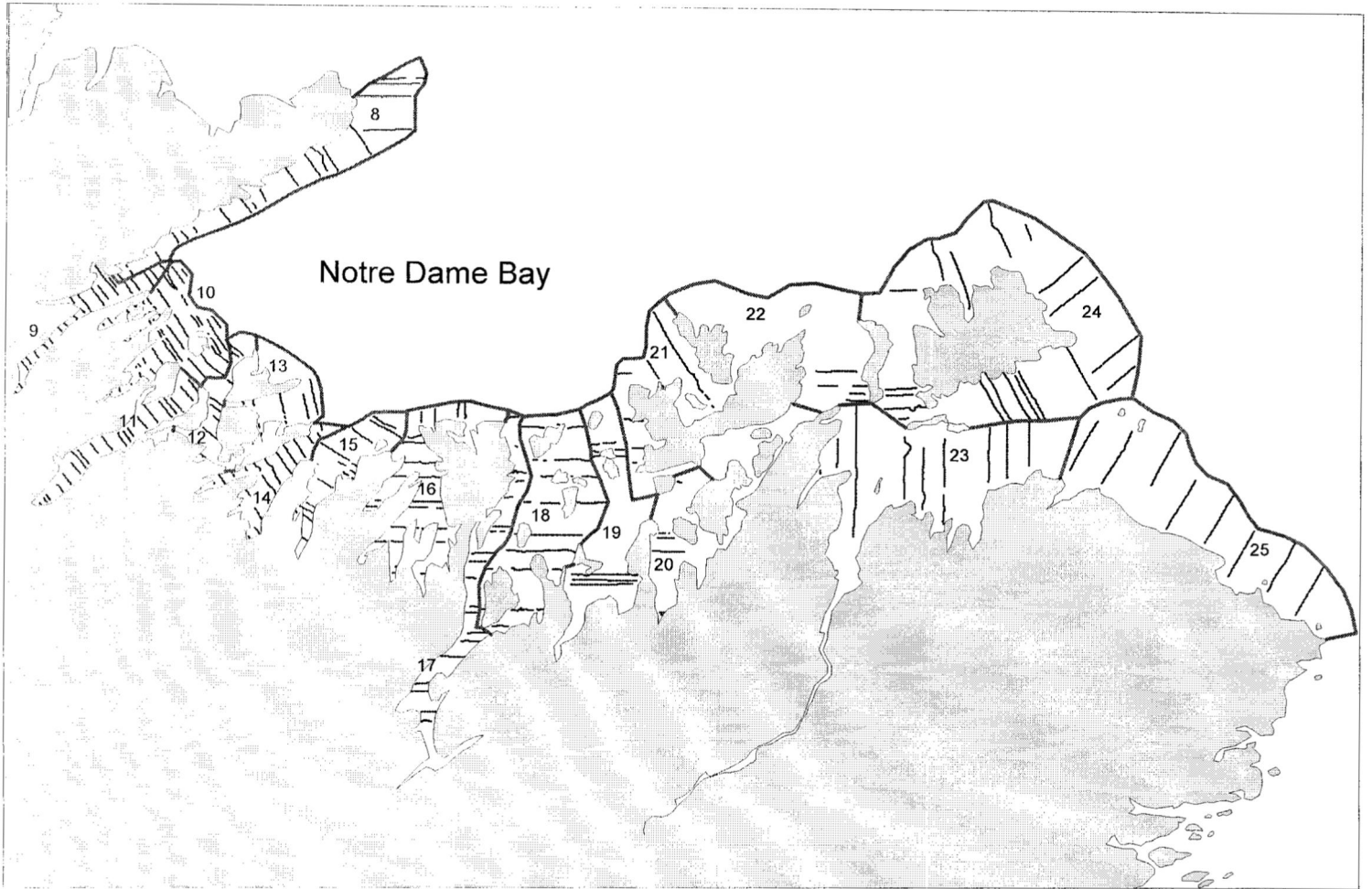


Figure 29. Area map of Notre Dame Bay indicating survey strata and transects for the 1997 acoustic survey.

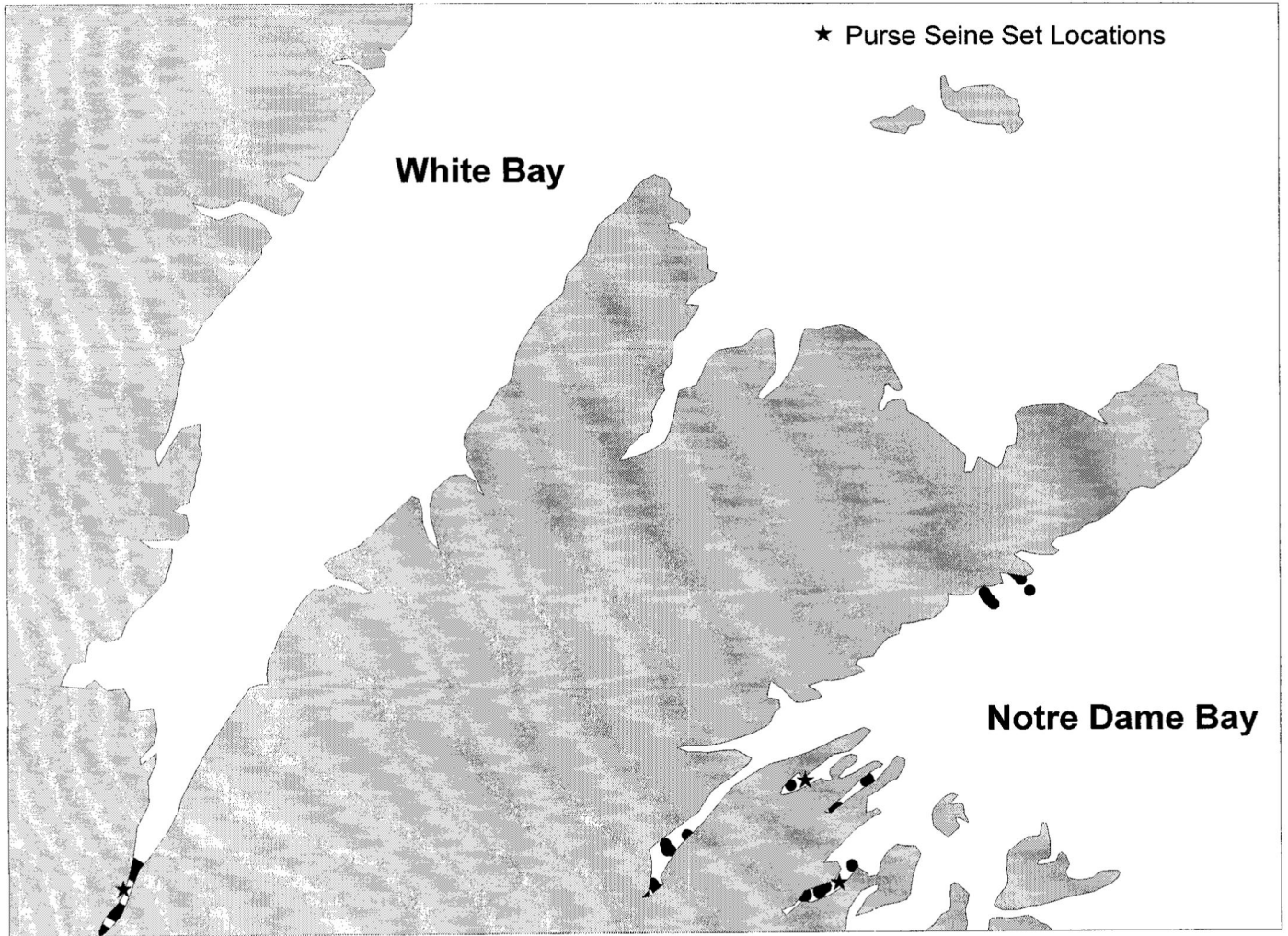


Figure 30. Distributions of herring in White Bay during the 1997 acoustic survey.

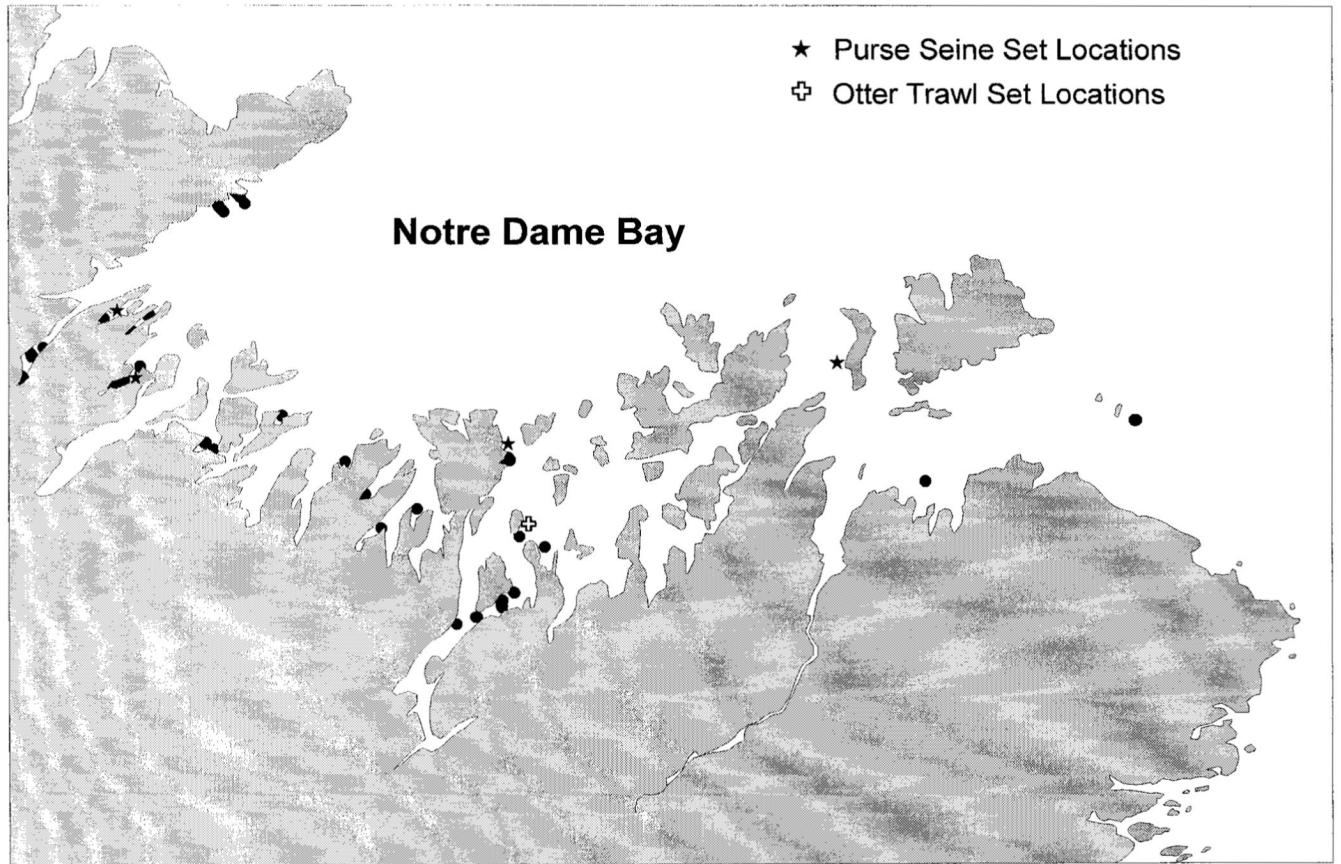


Figure 31. Distributions of herring in Notre Dame Bay during the 1997 acoustic survey.

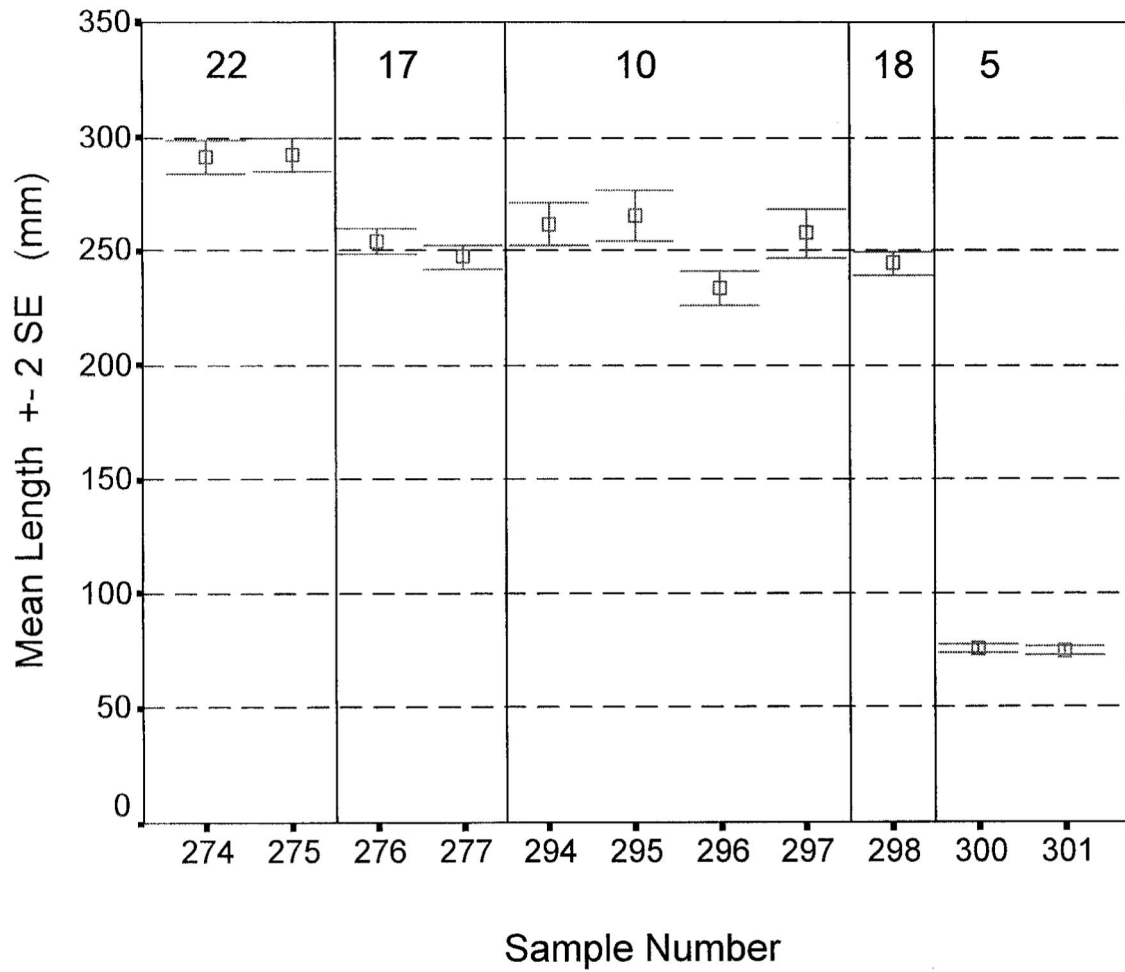


Figure 32. Mean fish lengths (mm) by sample number and stratum, from the 1997 White Bay - Notre Dame Bay acoustic survey.

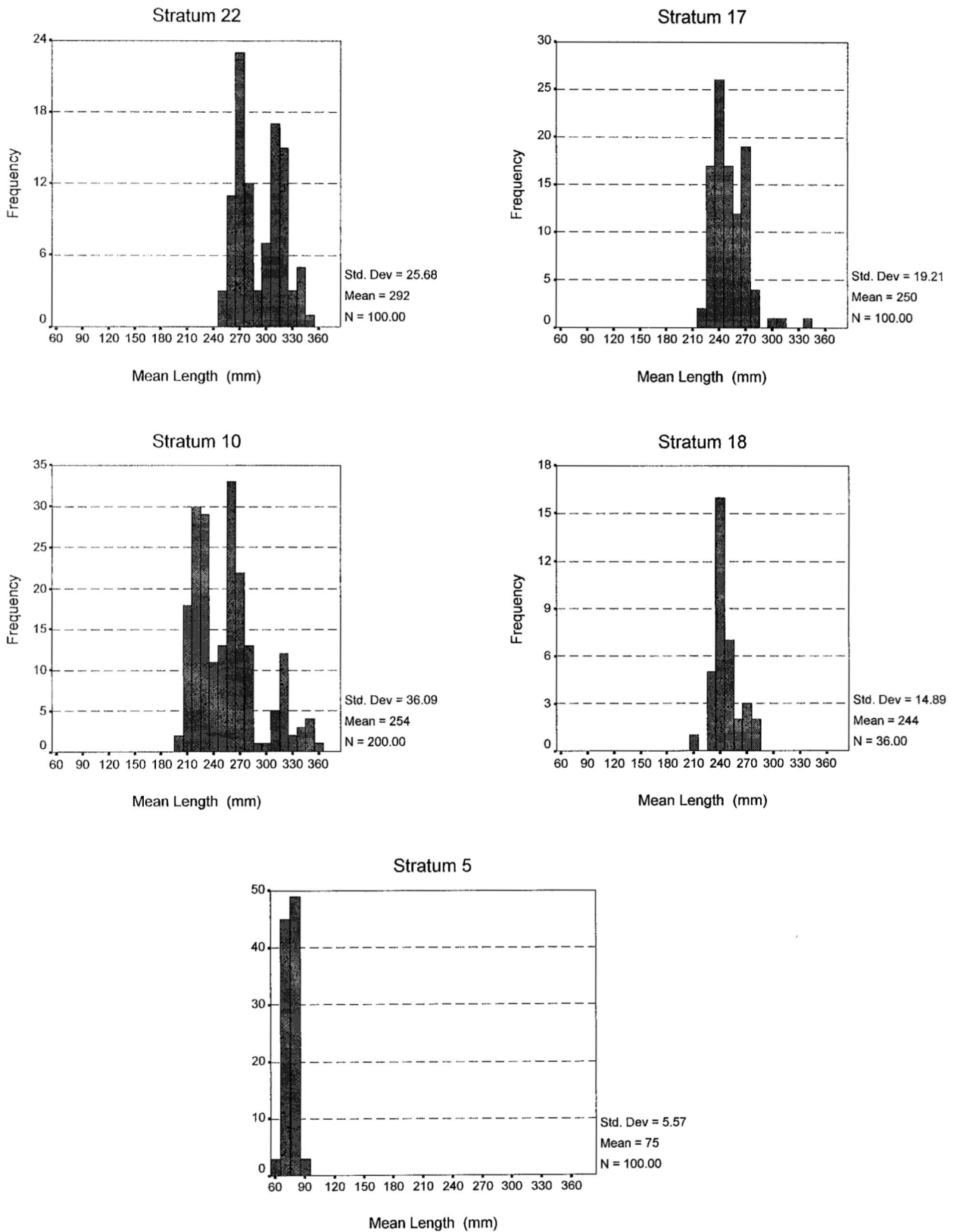


Figure 33. Length distributions of biological samples, by stratum, from 1997 White Bay - Notre Dame Bay acoustic survey.

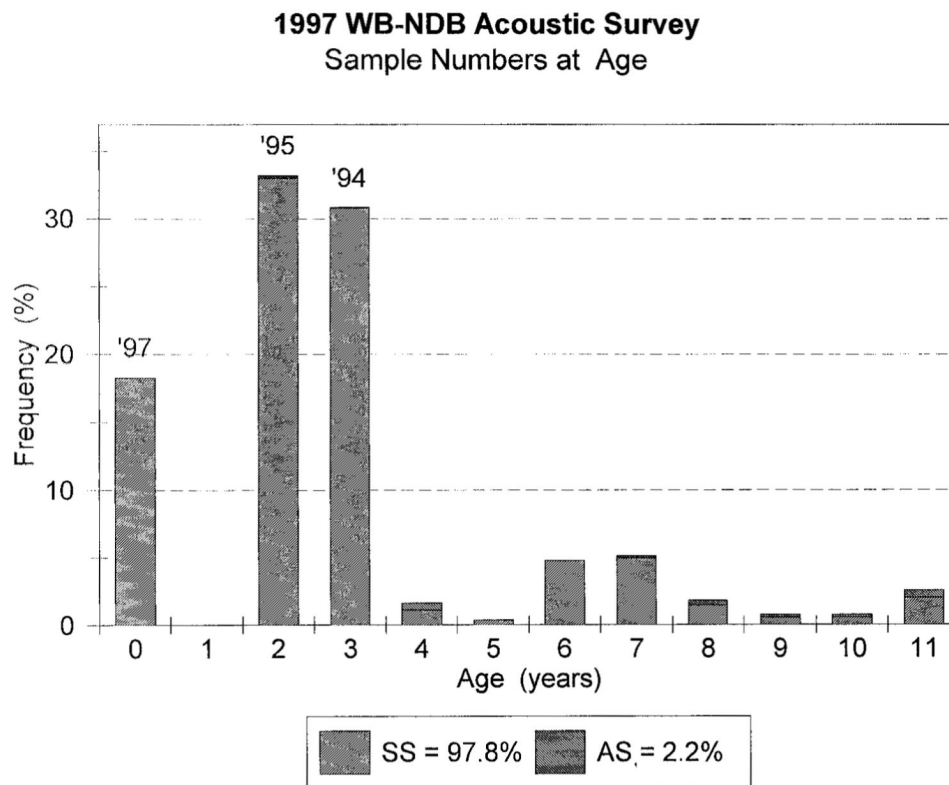


Figure 34. Sample age distribution of herring from the 1997 White Bay - Notre Dame Bay acoustic survey.

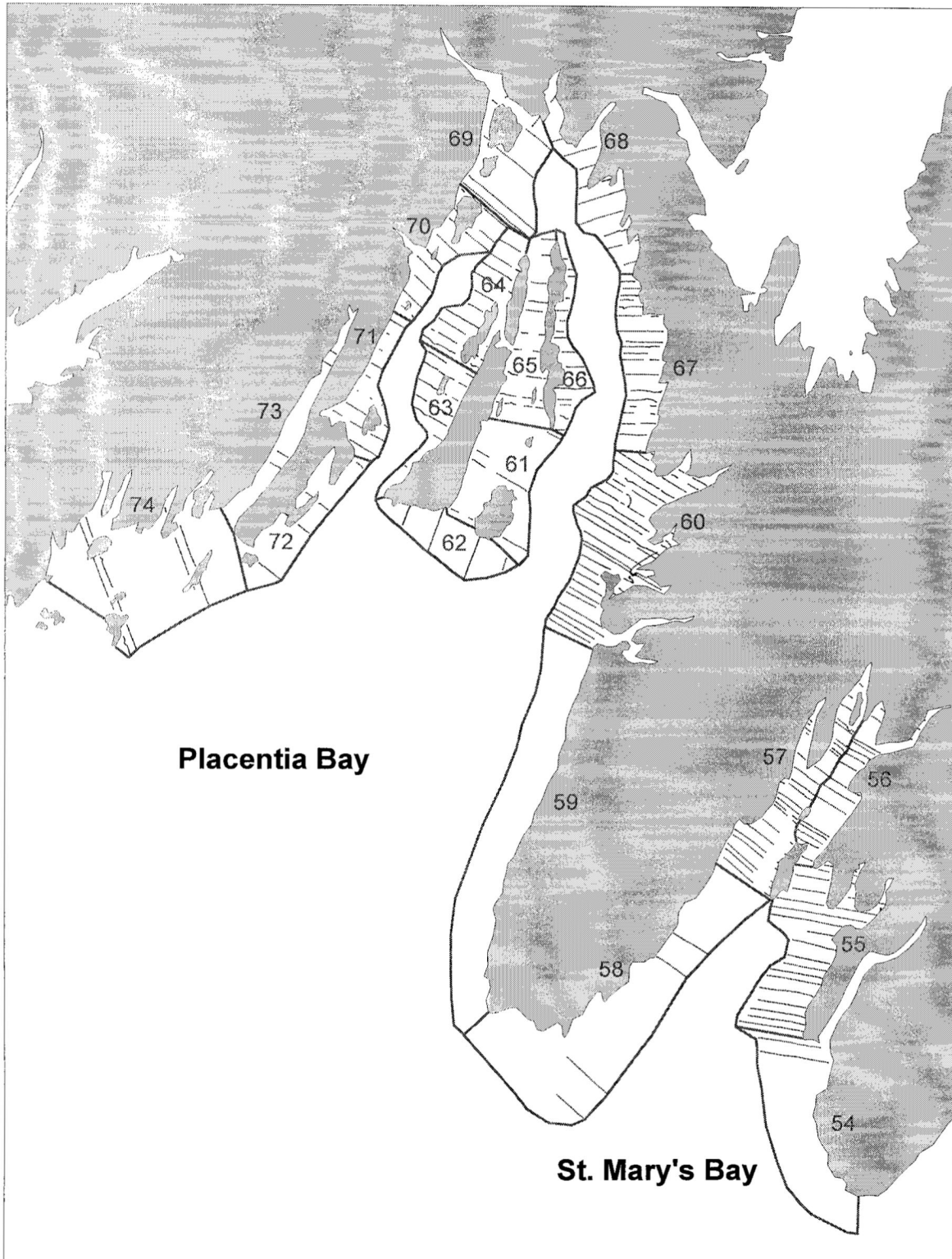


Figure 35. Area map of St. Mary's Bay - Placentia Bay indicating survey strata and transects for the 1998 acoustic survey. Strata boundaries include water depths ≤ 120 m.

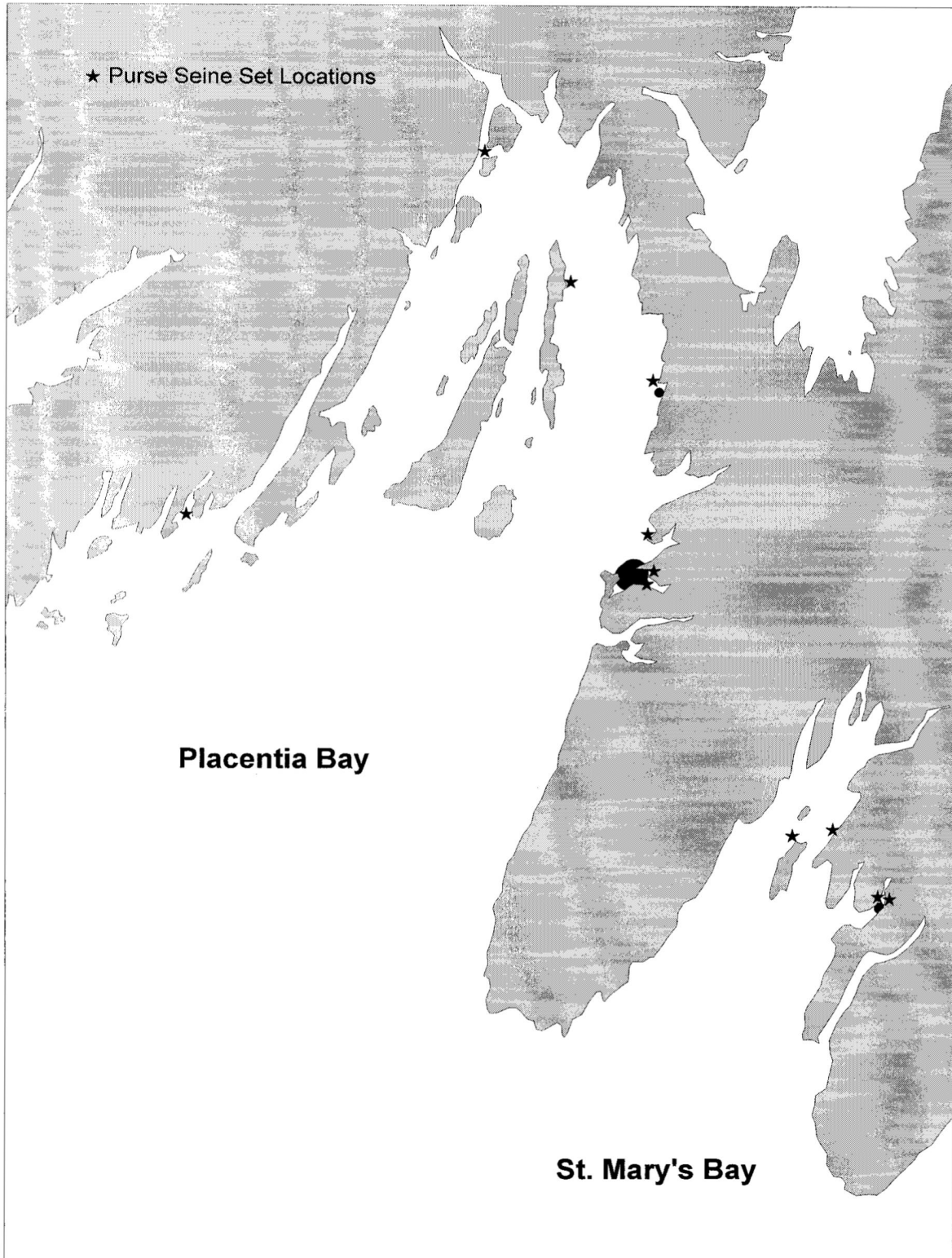


Figure 36. Distribution and density of herring on transects during the 1998 acoustic survey of St. Mary's Bay - Placentia Bay. Relative densities of herring are represented by expanding black symbols.

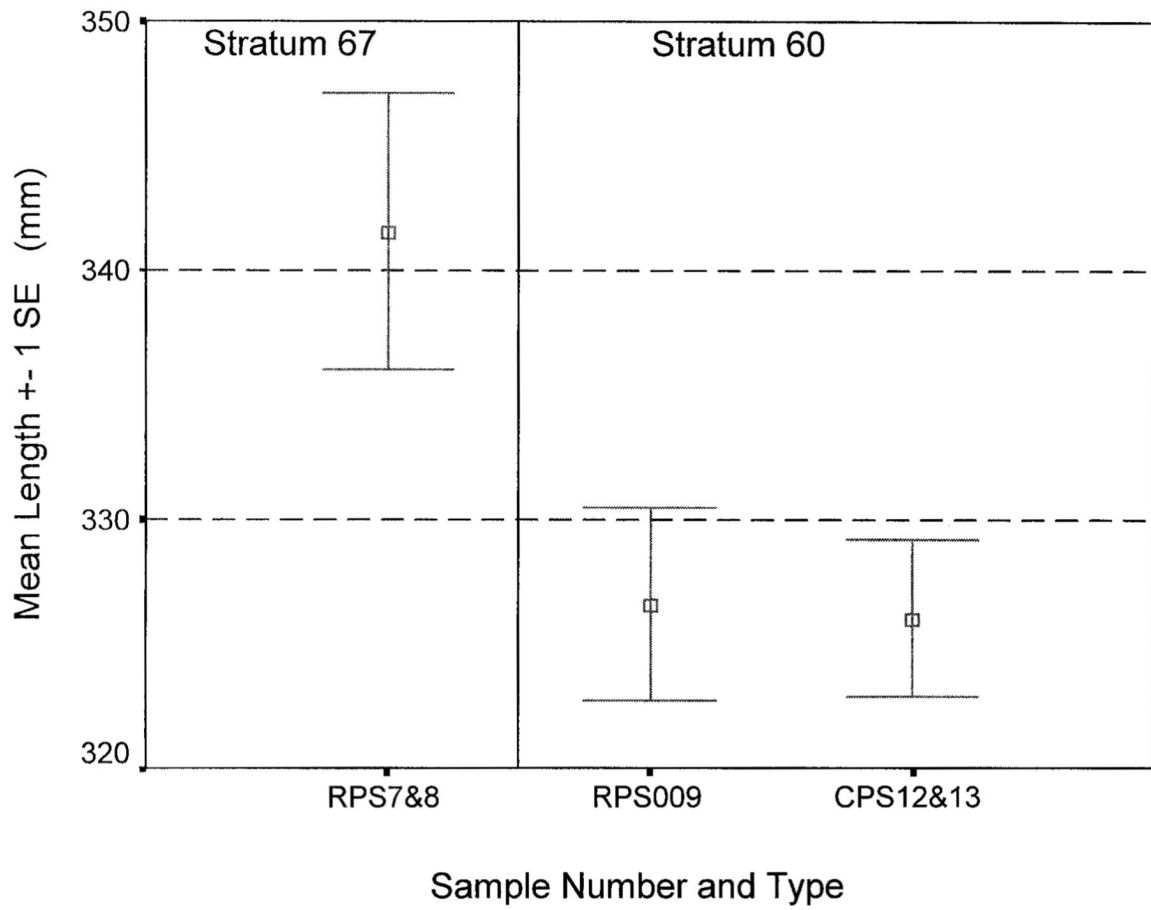


Figure 37. Mean fish lengths (mm) by sample number, sample type, and stratum, from the 1998 St. Mary's Bay - Placentia Bay acoustic survey.

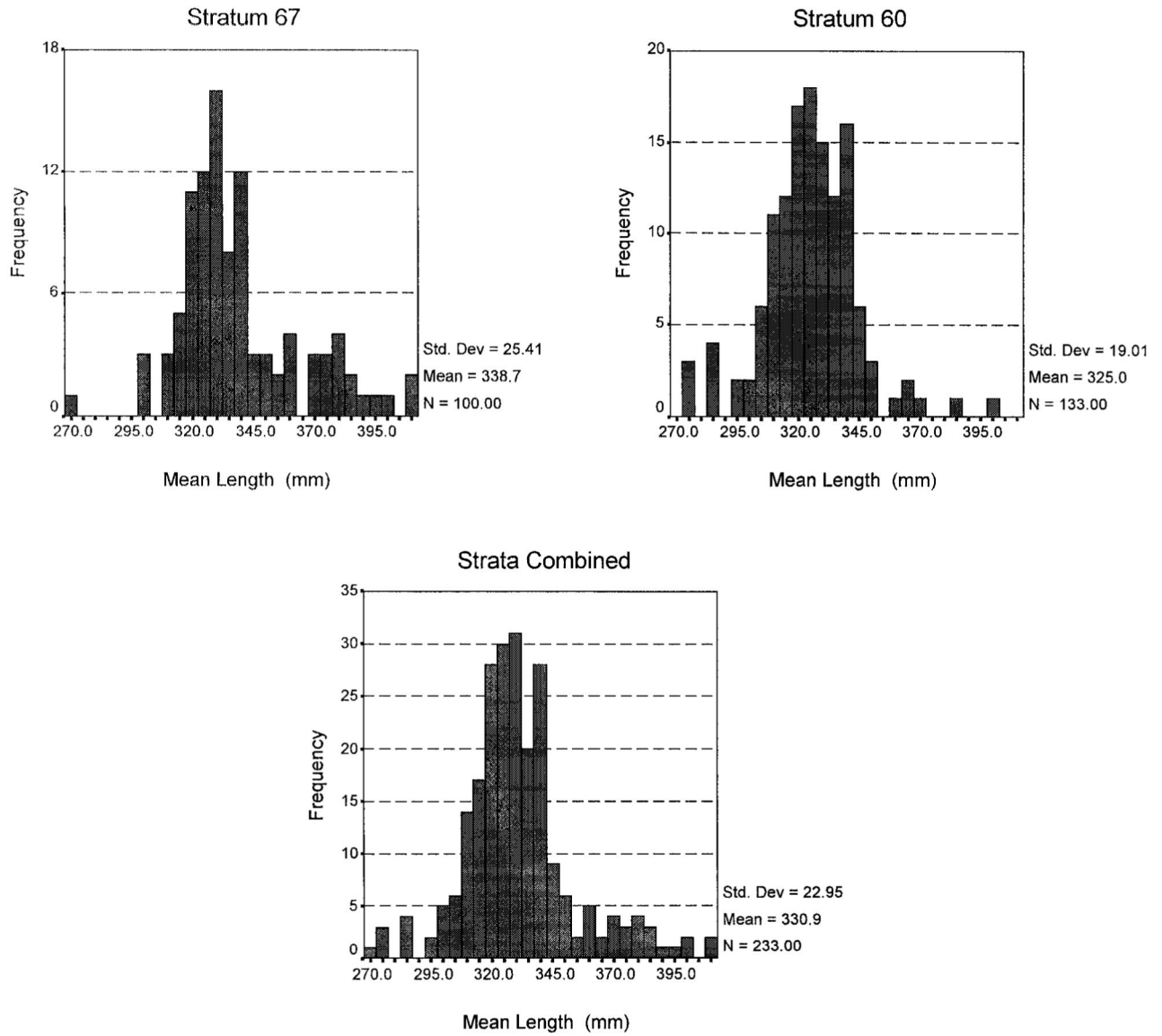
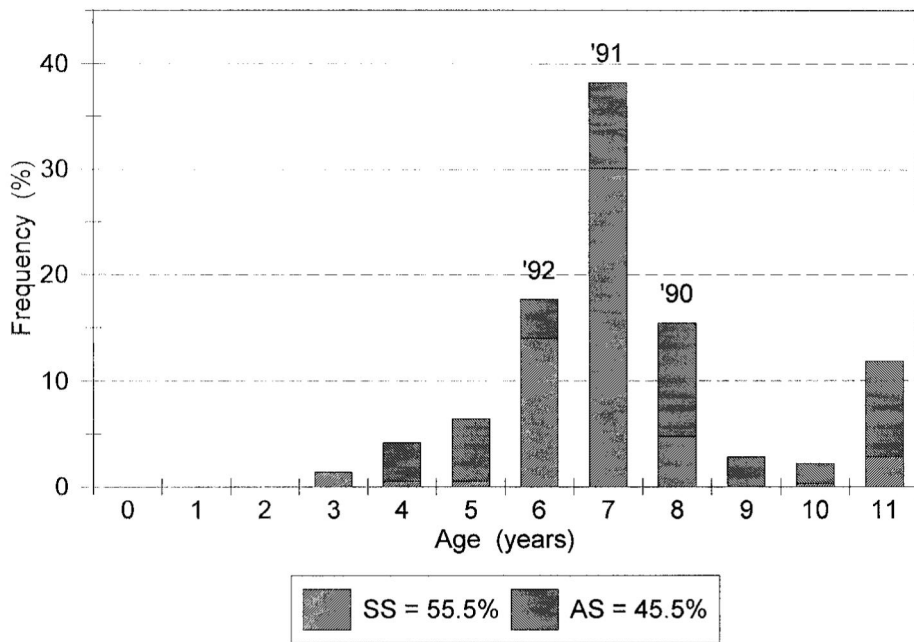


Figure 38. Length distributions of biological samples, by stratum, from the 1998 St. Mary's - Placentia Bay acoustic survey.

1998 SMB-PB Acoustic Survey
Population Numbers at Age



1996 SMB-PB Acoustic Survey
Population Numbers at Age

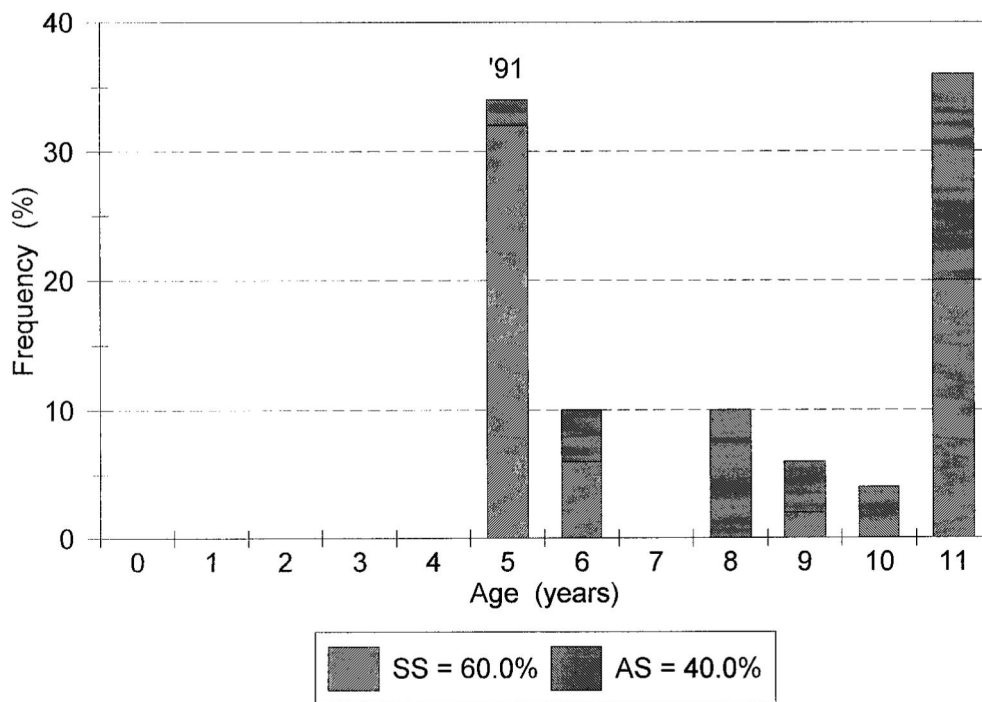


Figure 39. Age distributions of herring from the 1998 and 1996 St. Mary's Bay - Placentia Bay acoustic surveys.

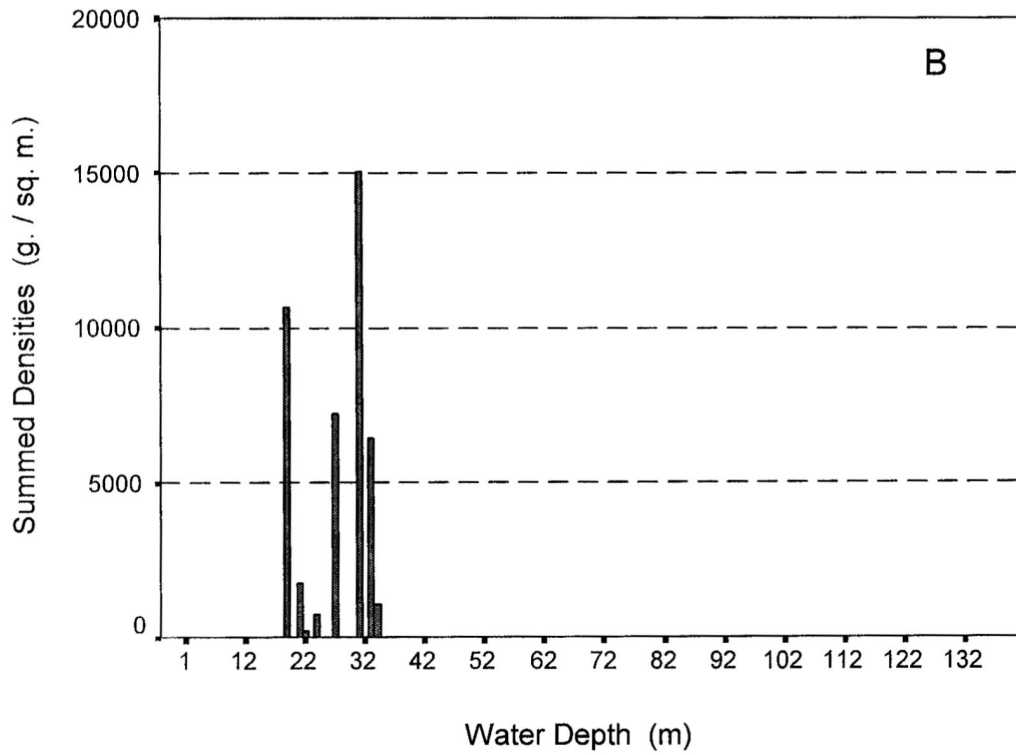
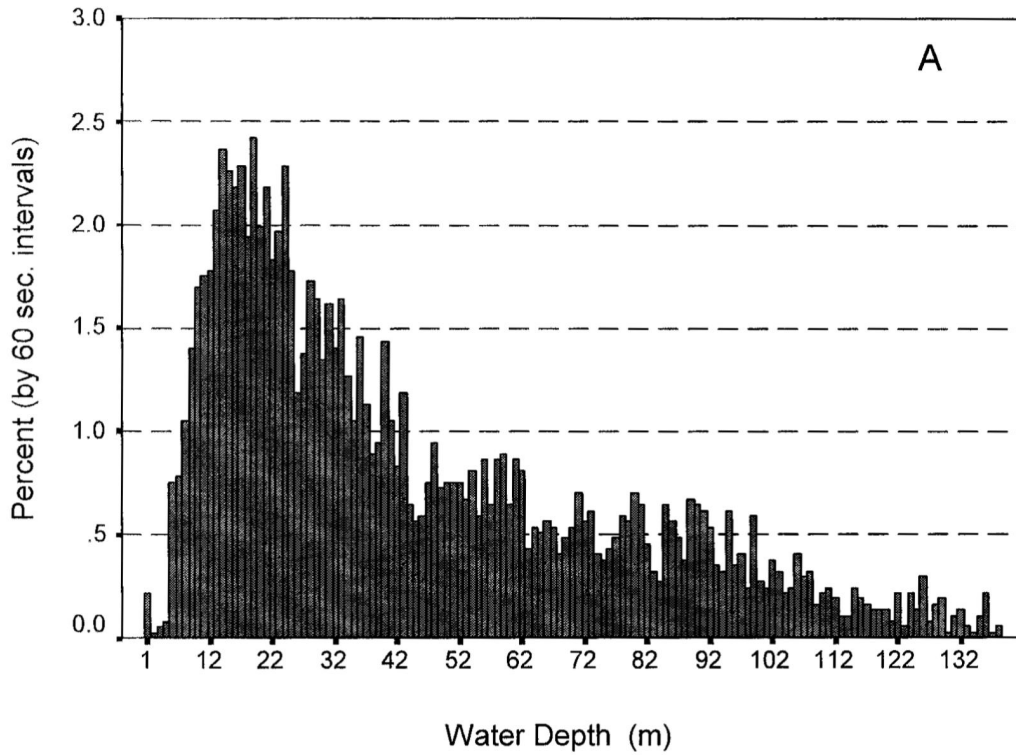


Figure 40. Distribution of acoustic sampling by water depth (Panel A) and summed densities of herring by water depth (Panel B) from the 1998 St. Mary's Bay - Placentia Bay acoustic survey.

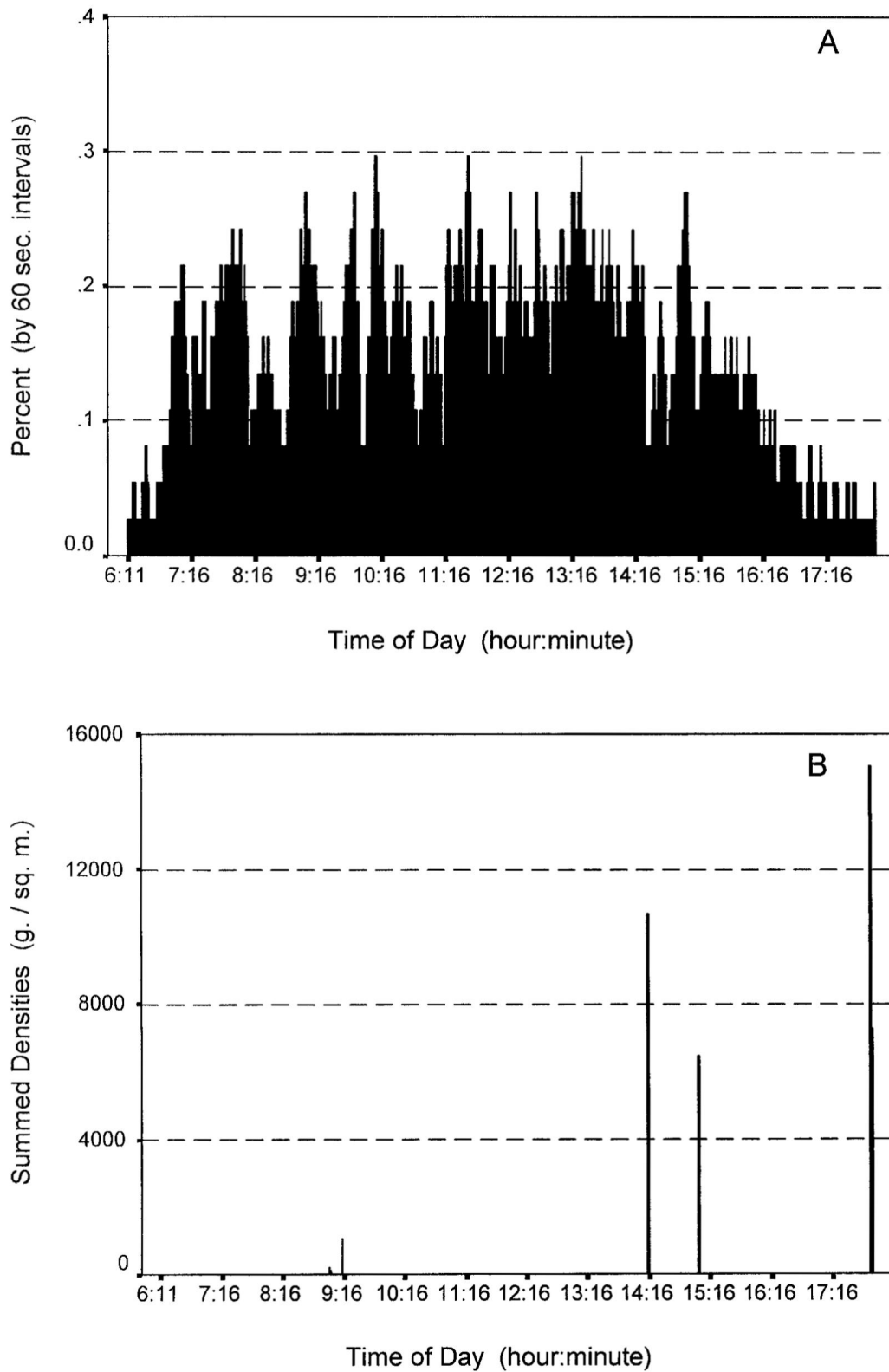


Figure 41. Distribution of acoustic sampling by time of day (Panel A) and summed densities of herring by time of day (Panel B) from the 1998 St. Mary's Bay - Placentia Bay acoustic survey.

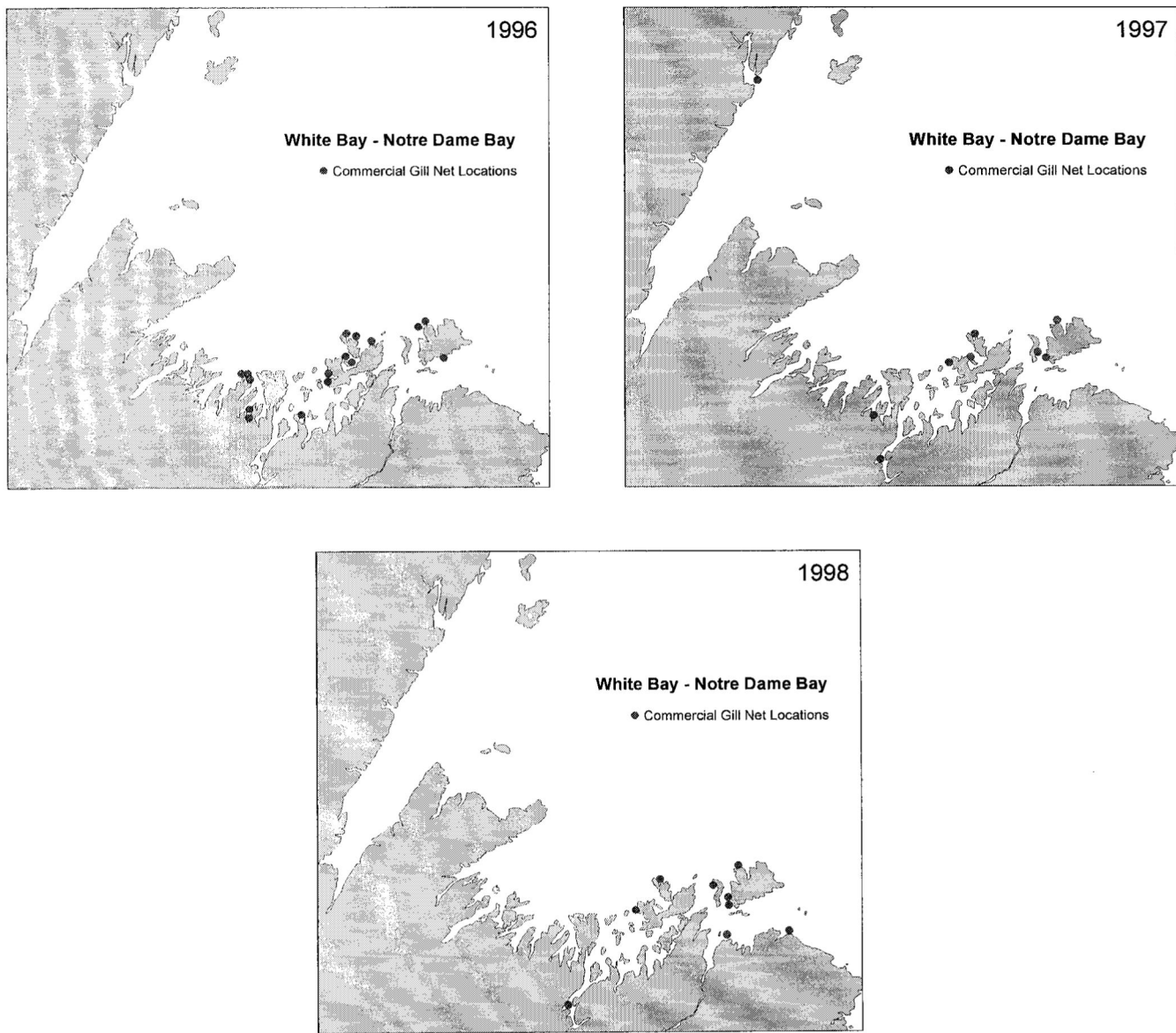


Figure 42. Commercial herring gill net set locations, by year, for White Bay - Notre Dame Bay, from commercial gill net logbooks.

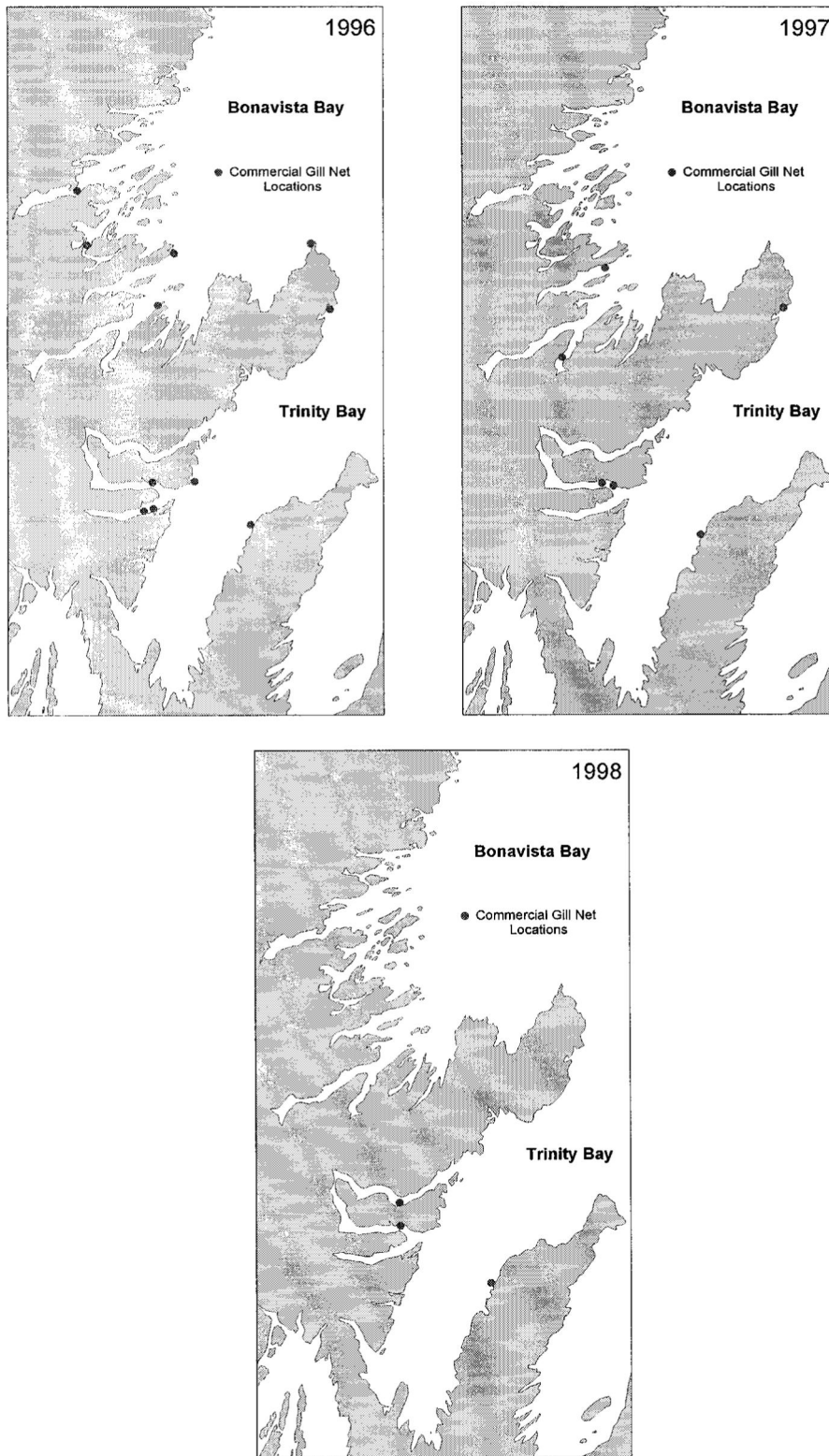


Figure 43. Commercial herring gill net set locations, by year, for Bonavista Bay -Trinity Bay, from commercial gill net logbooks.

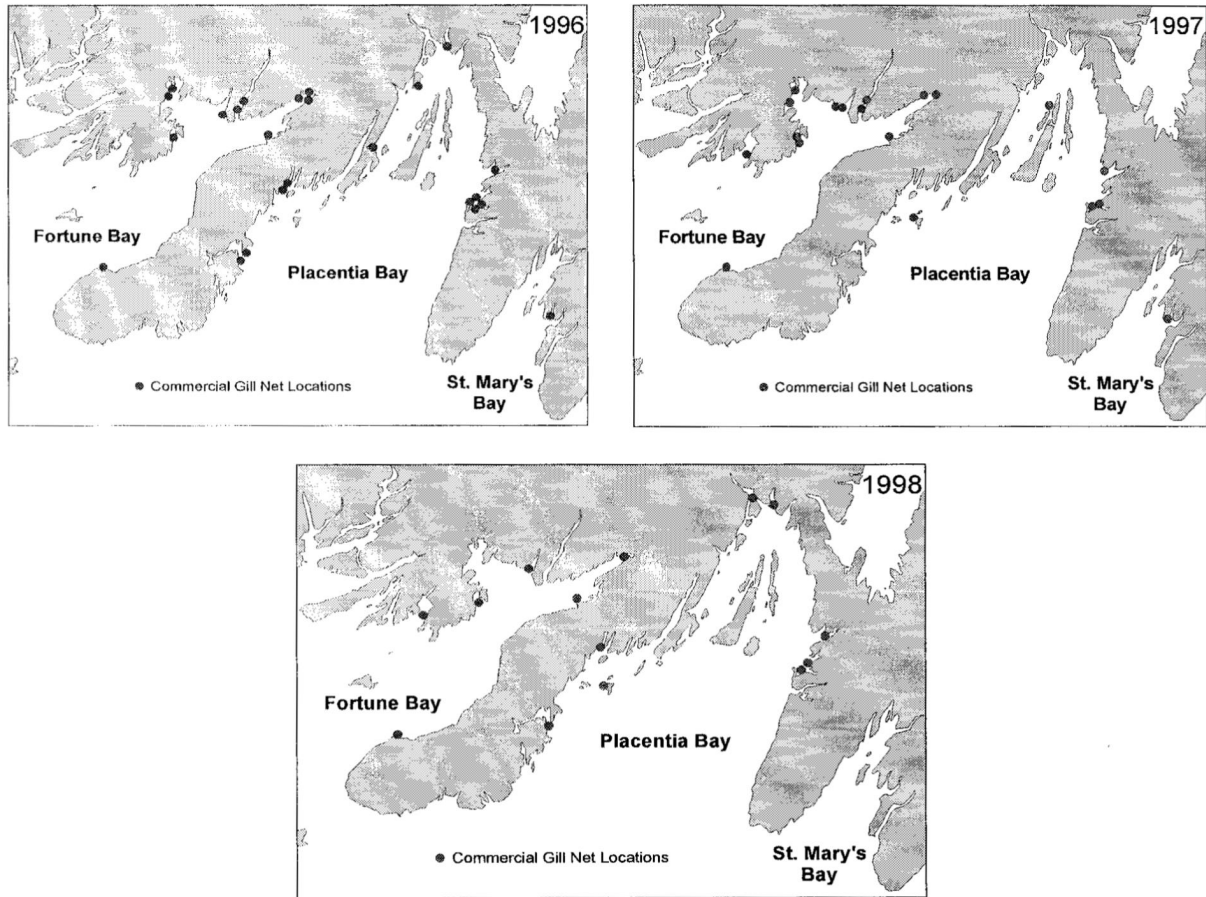


Figure 44. Commercial herring gill net set locations, by year, for St. Mary's Bay - Placentia Bay and Fortune Bay, from commercial gill net logbooks.