

NAME OF STREAM (Not Gazetted) (Granite Bay Creek)  
 CONSERVATION DISTRICT 5 STATISTICAL AREA 13  
 LOCATION OF MOUTH Flows S.W. and N.W. into Granite Bay, W. side of Quadra Is. -  
Sayward Dist. POSITION 50 125 S.E.  
 LENGTH 1.5 MI. WIDTH \_\_\_\_\_ FT. DRAINAGE \_\_\_\_\_ SQ. MI.  
 COMPOSITION: BEDROCK \_\_\_\_\_ BOULDER \_\_\_\_\_ COARSE \_\_\_\_\_ FINE \_\_\_\_\_  
 SILT & SAND \_\_\_\_\_ UNCLASSIFIED \_\_\_\_\_

GRADIENT:  
 FALL IN FT/000

0.0 - 2.5
2.5 - 5.0
5.0 - 7.5
7.5 - 10.0
> 10.0

WETTED AREA \_\_\_\_\_ SQ. YD. SPAWNING AREA \_\_\_\_\_ SQ. YD.  
 DISCHARGE \_\_\_\_\_ CFS MAX \_\_\_\_\_ MIN \_\_\_\_\_  
 TEMPERATURE \_\_\_\_\_  
 BARRIERS OR POINTS OF DIFFICULT ASCENT \_\_\_\_\_  
 - Impassable falls at 1.5 mi.

SPAWNING DISTRIBUTION:

SPECIES	SECTION OF STREAM USED
SOCKEYE	
CHINOOK	
COHO	throughout
CHUM	throughout
PINK (ODD YR)	throughout
PINK (EVEN YR)	throughout
STEELHEAD	

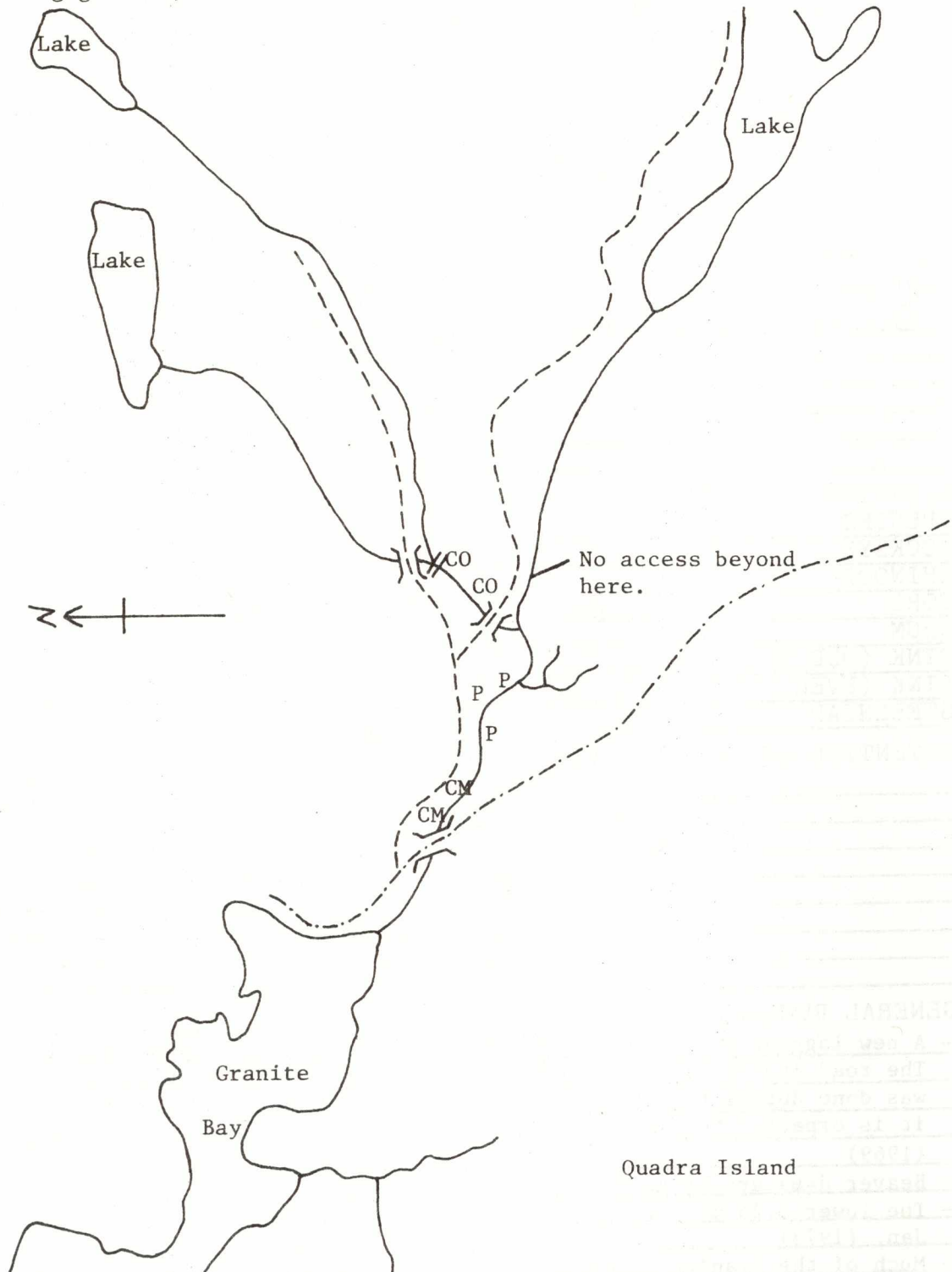
POTENTIAL OF INACCESSIBLE PORTION OF STREAM \_\_\_\_\_  
 \_\_\_\_\_  
 \_\_\_\_\_  
 \_\_\_\_\_  
 \_\_\_\_\_

GENERAL REMARKS:  
 - A new logging road caused considerable silting from run-off during heavy fall rains. The road itself was not constructed in a satisfactory manner and remedial ditching was done during the fall months. This creek has not suffered permanent damage and it is expected to be one of the important salmon producing streams in this area. (1969)  
 - Beaver dams are broached as required. (1972)  
 - The lower 0.25 mi. of the stream was badly silted due to a logging road washout in Jan. (1973)  
 - Much of the Granite Creek watershed was logged during the 1920's and 1930's and today thriving stands of second growth cover the valley. (1975)

GENERAL REMARKS: (Cont'd)

- Crown Zellerbach did some work this year in regard to replacing culverts, ditching and bank stabilization in order to prevent further deposition of gravel and fines into the lower portion of this stream. (1975)

Sketch of Granite Creek, 1975  
(spawning grounds)



ESCAPEMENT RECORD FOR

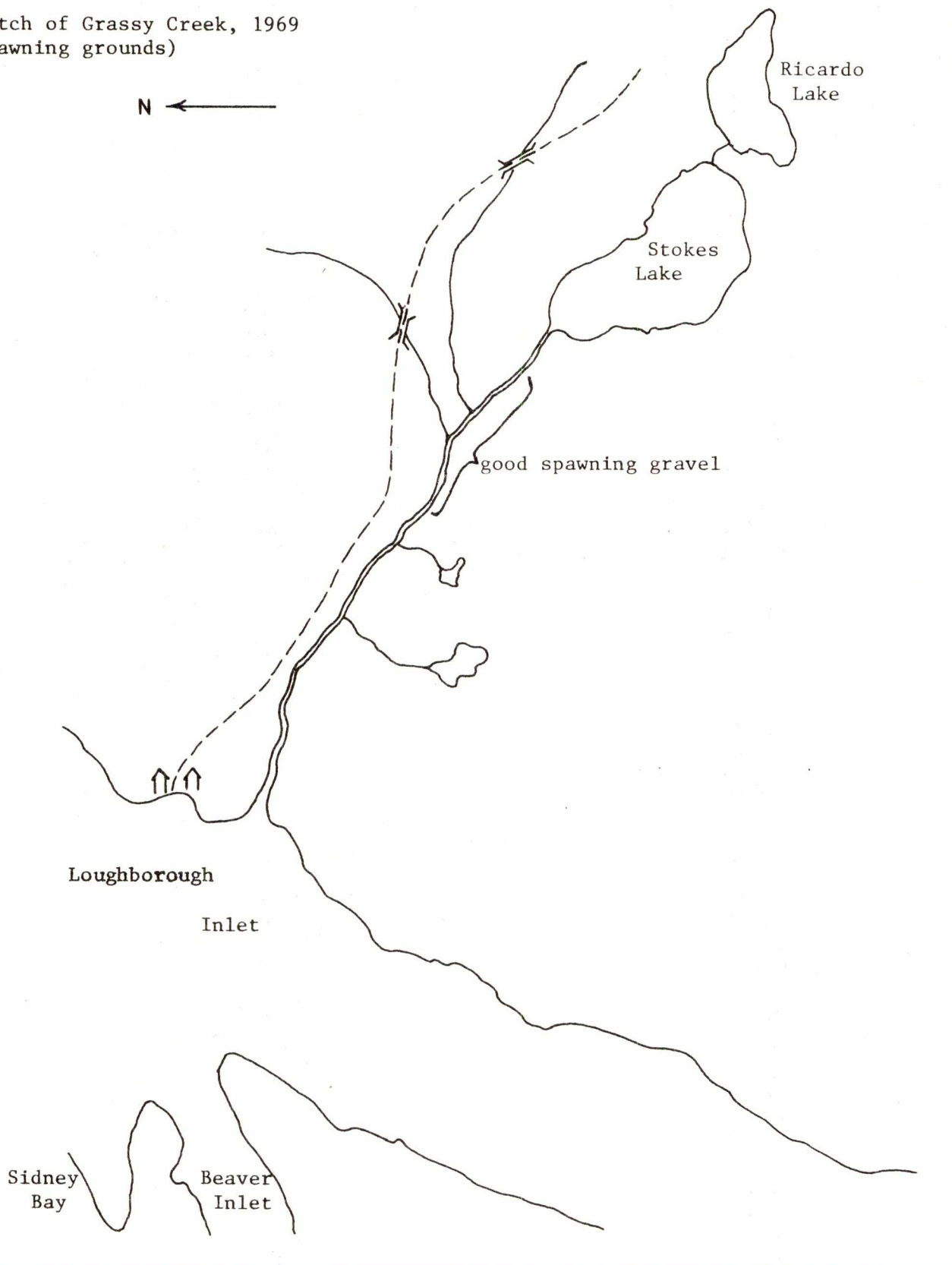
(Granite Bay Creek)

YEAR	SOCKEYE	CHINOOK	COHO	CHUM	PINK	STEELHEAD
1947				3500	750	
48			75	750	7500	
49			25	1500	25	
50			N/O	750	7500	
51			75	750	75	
52			200	400	15000	
53			25	400	UNK	
54			25	750	3500	
55			25	75	N/O	
56			75	75	7500	
57			25	25	N/O	
58			N/O	1500	7500	
59			75	75	25	
60			25	75	400	
61			25	200	N/O	
62			75	200	1500	
63			75	200	N/O	
64			400	400	7500	
65			200	400	N/O	
66			75	400	7500	
67			75	200	25	
68			75	1500	15000	
69			25	1500	25	
70			N/O	400	1500	
71			25	400	N/O	
72			25	400	400	
73			N/O	200	N/O	
74			25	200	N/O	
75			75	200	N/O	
76						
77						
78						
79						
80						
81						
82						
83						
84						
85						
Time						
Arr.			OCT	OCT	L AUG	
Start			OCT	E OCT	SEPT	
Peak			L OCT	E NOV	L SEPT	
End			NOV	NOV	OCT	

REMARKS

GRASSY CREEK: For topographical map, refer to STAFFORD RIVER, page 143.

Sketch of Grassy Creek, 1969  
(spawning grounds)



NAME OF STREAM GRASSY CREEK  
 CONSERVATION DISTRICT 5 STATISTICAL AREA 13  
 LOCATION OF MOUTH Flows N.W. into Loughborough Inlet, E. of Beaver Inlet, Rge. 1  
 - Coast Dist. \_\_\_\_\_ POSITION 50 125 N.E.  
 LENGTH 3.0 MI. WIDTH \_\_\_\_\_ FT. DRAINAGE \_\_\_\_\_ SQ. MI.  
 COMPOSITION: BEDROCK \_\_\_\_\_ BOULDER \_\_\_\_\_ COARSE \_\_\_\_\_ FINE \_\_\_\_\_  
 SILT & SAND \_\_\_\_\_ UNCLASSIFIED \_\_\_\_\_

## GRADIENT:

FALL IN FT/000

0.0 - 2.5
2.5 - 5.0
5.0 - 7.5
7.5 - 10.0
> 10.0

WETTED AREA \_\_\_\_\_ SQ. YD. SPAWNING AREA \_\_\_\_\_ SQ. YD.

DISCHARGE \_\_\_\_\_ CFS MAX \_\_\_\_\_ MIN \_\_\_\_\_

TEMPERATURE \_\_\_\_\_

BARRIERS OR POINTS OF DIFFICULT ASCENT \_\_\_\_\_

## SPAWNING DISTRIBUTION:

SPECIES	SECTION OF STREAM USED
SOCKEYE	
CHINOOK	
COHO	throughout (to lake)
CHUM	throughout (to lake)
PINK (ODD YR)	throughout (to lake)
PINK (EVEN YR)	throughout (to lake)
STEELHEAD	

POTENTIAL OF INACCESSIBLE PORTION OF STREAM \_\_\_\_\_

GENERAL REMARKS: \_\_\_\_\_



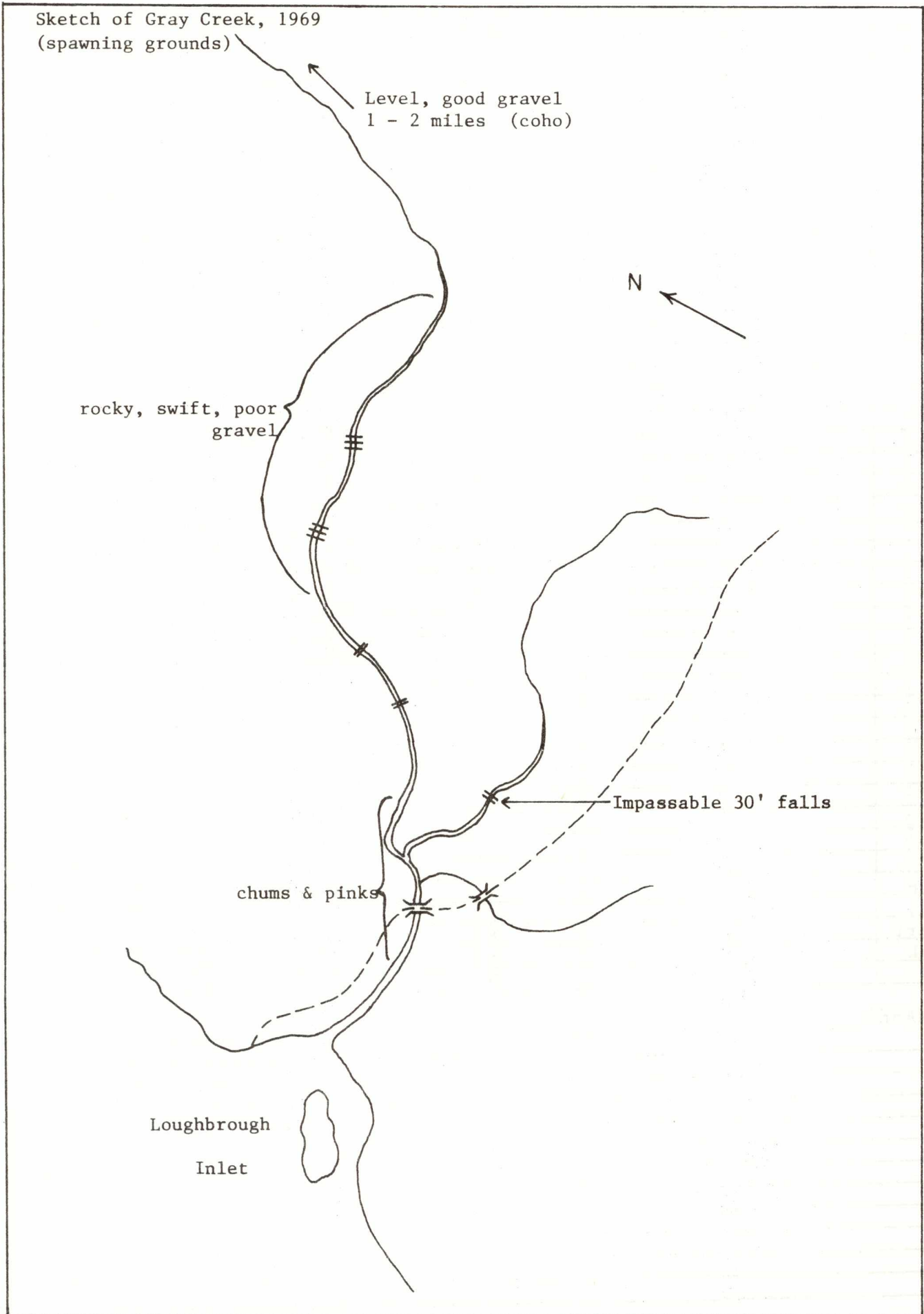
ESCAPEMENT RECORD FOR GRASSY CREEK

YEAR	SOCKEYE	CHINOOK	COHO	CHUM	PINK	STEELHEAD
1947			N/O	25	N/O	
48			75	200	1500	
49			N/O	75	N/O	
50			N/O	25	1500	
51			25	75	N/O	
52			N/O	75	75000	
53			25	25	25	
54			N/O	25	1500	
55			25	25	N/O	
56			25	75	15000	
57			25	25	25	
58			25	75	3500	
59			N/O	N/O	N/O	
60			25	75	1500	
61			200	75	N/O	
62			750	75	20000	
63			400	75	N/O	
64			400	75	35000	
65			750	N/O	N/O	
66			750	N/O	75000	
67			200	200	N/O	
68			750	N/O	200000	
69			200	N/O	N/O	
70			400	N/O	25000	
71			75	N/O	N/O	
72			75	N/O	25000	
73			75	200	N/O	
74			400	400	100000	
75			200	N/O	25	
76						
77						
78						
79						
80						
81						
82						
83						
84						
85						
Time						
Arr.			SEPT		SEPT	
Start			OCT	OCT	L SEPT	
Peak			OCT	NOV	OCT	
End			NOV	NOV	NOV	

REMARKS



GRAY CREEK: For topographical map, refer to STAFFORD RIVER, page 143.



NAME OF STREAM GRAY CREEK  
 CONSERVATION DISTRICT 5 STATISTICAL AREA 13  
 LOCATION OF MOUTH Flows S.W. into Loughbrough Inlet, N.E. of Sidney Bay, Rge. 1  
 - Coast Dist. \_\_\_\_\_ POSITION 50 125 N.W.  
 LENGTH \_\_\_\_\_ MI. WIDTH \_\_\_\_\_ FT. DRAINAGE \_\_\_\_\_ SQ. MI.  
 COMPOSITION: BEDROCK \_\_\_\_\_ BOULDER \_\_\_\_\_ COARSE \_\_\_\_\_ FINE \_\_\_\_\_  
 SILT & SAND \_\_\_\_\_ UNCLASSIFIED \_\_\_\_\_

GRADIENT:  
 FALL IN FT/000

0.0 - 2.5	
2.5 - 5.0	
5.0 - 7.5	
7.5 - 10.0	
> 10.0	

WETTED AREA \_\_\_\_\_ SQ. YD. SPAWNING AREA \_\_\_\_\_ SQ. YD.  
 DISCHARGE \_\_\_\_\_ CFS MAX \_\_\_\_\_ MIN \_\_\_\_\_

TEMPERATURE \_\_\_\_\_

BARRIERS OR POINTS OF DIFFICULT ASCENT \_\_\_\_\_  
 - Impassable 30' falls in left fork at 2.5 mi.  
 - Passable falls and cascades in right fork 2 - 3 mi.

SPAWNING DISTRIBUTION:

SPECIES	SECTION OF STREAM USED
SOCKEYE	
CHINOOK	
COHO	throughout
CHUM	
PINK (ODD YR)	to 1.5 mi.
PINK (EVEN YR)	to 1.5 mi.
STEELHEAD	

POTENTIAL OF INACCESSIBLE PORTION OF STREAM \_\_\_\_\_  
 - Approx. two mi. of almost ideal rearing area for coho exists above the obstruction of the left-hand fork.

GENERAL REMARKS:  
 - Fairly good spawning areas are located in the lower 0.5 mi., becoming coarser at 1.0 mi. The second mile becomes steep and rocky, with several points of difficult ascent, however, the third mile has less gradient and good spawning gravel. (1963)

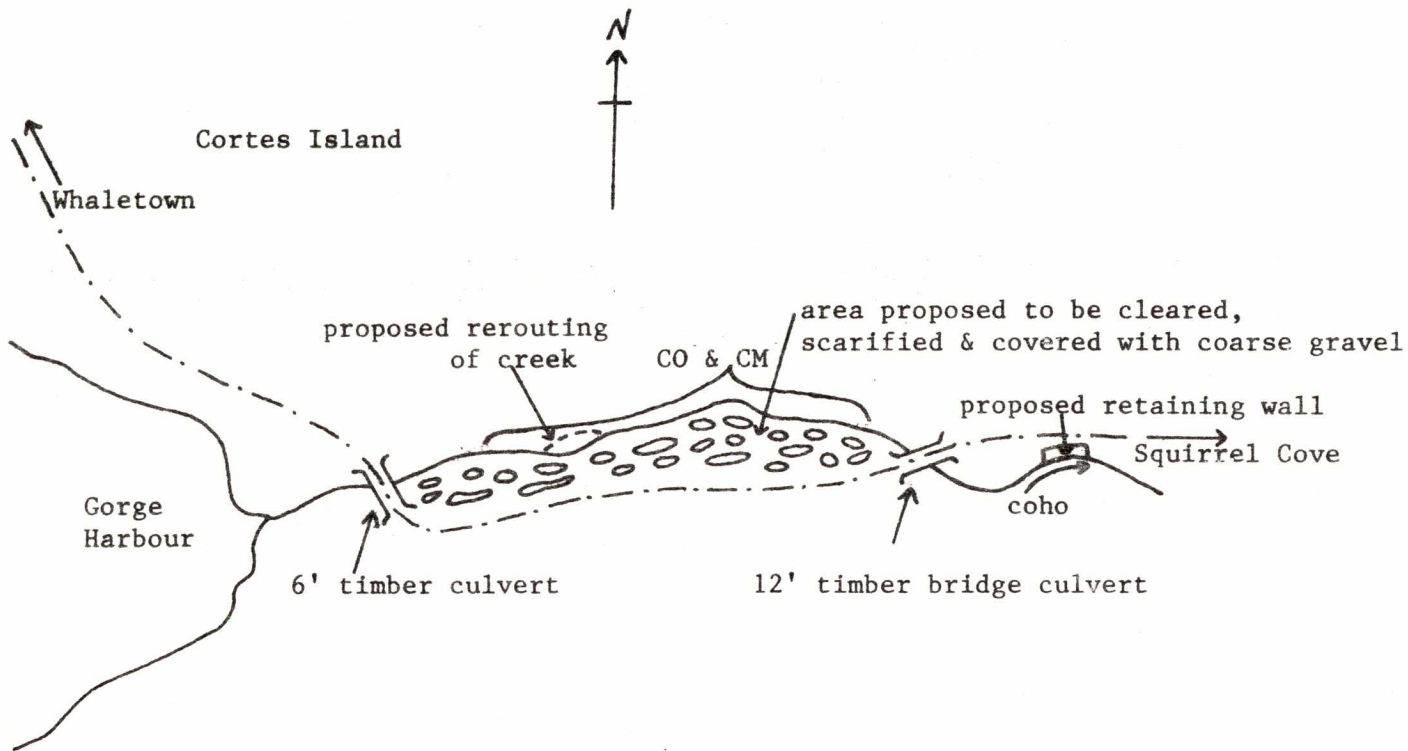


ESCAPEMENT RECORD FOR GRAY CREEK

YEAR	SOCKEYE	CHINOOK	COHO	CHUM	PINK	STEELHEAD
1947			N/O	3500	1500	
48			25	25	200	
49			25	200	200	
50			N/O	25	3500	
51			25	400	25	
52			75	25	15000	
53			25	25	200	
54			25	25	200	
55			25	25	200	
56			25	75	750	
57			75	25	1500	
58			25	25	750	
59			25	N/O	200	
60			200	75	750	
61			200	25	200	
62			400	75	1500	
63			400	400	N/O	
64			200	75	3500	
65			400	N/O	400	
66			750	N/O	7500	
67			75	75	200	
68			200	75	7500	
69			200	N/O	200	
70			200	N/O	3500	
71			200	N/O	N/O	
72			75	N/O	750	
73			200	N/O	N/O	
74			400	N/O	7500	
75			200	N/O	1500	
76						
77						
78						
79						
80						
81						
82						
83						
84						
85						
Time						
Arr.			SEPT		E SEPT	
Start			E OCT	OCT	SEPT	
Peak			E OCT	OCT	E OCT	
End			E NOV	NOV	OCT	

REMARKS

Sketch of Hanson's Creek, 1975  
(spawning area)



NAME OF STREAM (Not Gazetted) (Hanson's Creek)

CONSERVATION DISTRICT 5 STATISTICAL AREA 13

LOCATION OF MOUTH Flows W. into Gorge Harbour, W. side of Cortes Is. - Sayward

Dist. POSITION 50 124 S.W.

LENGTH 0.5 MI. WIDTH FT. DRAINAGE SQ. MI.

COMPOSITION: BEDROCK BOULDER COARSE FINE

SILT & SAND UNCLASSIFIED

GRADIENT:

FALL IN FT/000

0.0 - 2.5	
2.5 - 5.0	
5.0 - 7.5	
7.5 - 10.0	
> 10.0	

WETTED AREA SQ. YD. SPAWNING AREA SQ. YD.

DISCHARGE CFS MAX MIN

TEMPERATURE

BARRIERS OR POINTS OF DIFFICULT ASCENT

SPAWNING DISTRIBUTION:

SPECIES	SECTION OF STREAM USED
SOCKEYE	
CHINOOK	
COHO	lower 0.5 mi.
CHUM	lower 0.5 mi.
PINK (ODD YR)	
PINK (EVEN YR)	
STEELHEAD	

POTENTIAL OF INACCESSIBLE PORTION OF STREAM

GENERAL REMARKS:

- Two culverts hampered access to chum salmon until recently. The lower culvert was replaced by a bridge in 1968. The upper culvert was improved by the addition of a further culvert in 1969.
- Dept. of Highways have done work on diverting a portion of the lower reaches of this stream for road protection. (1975)



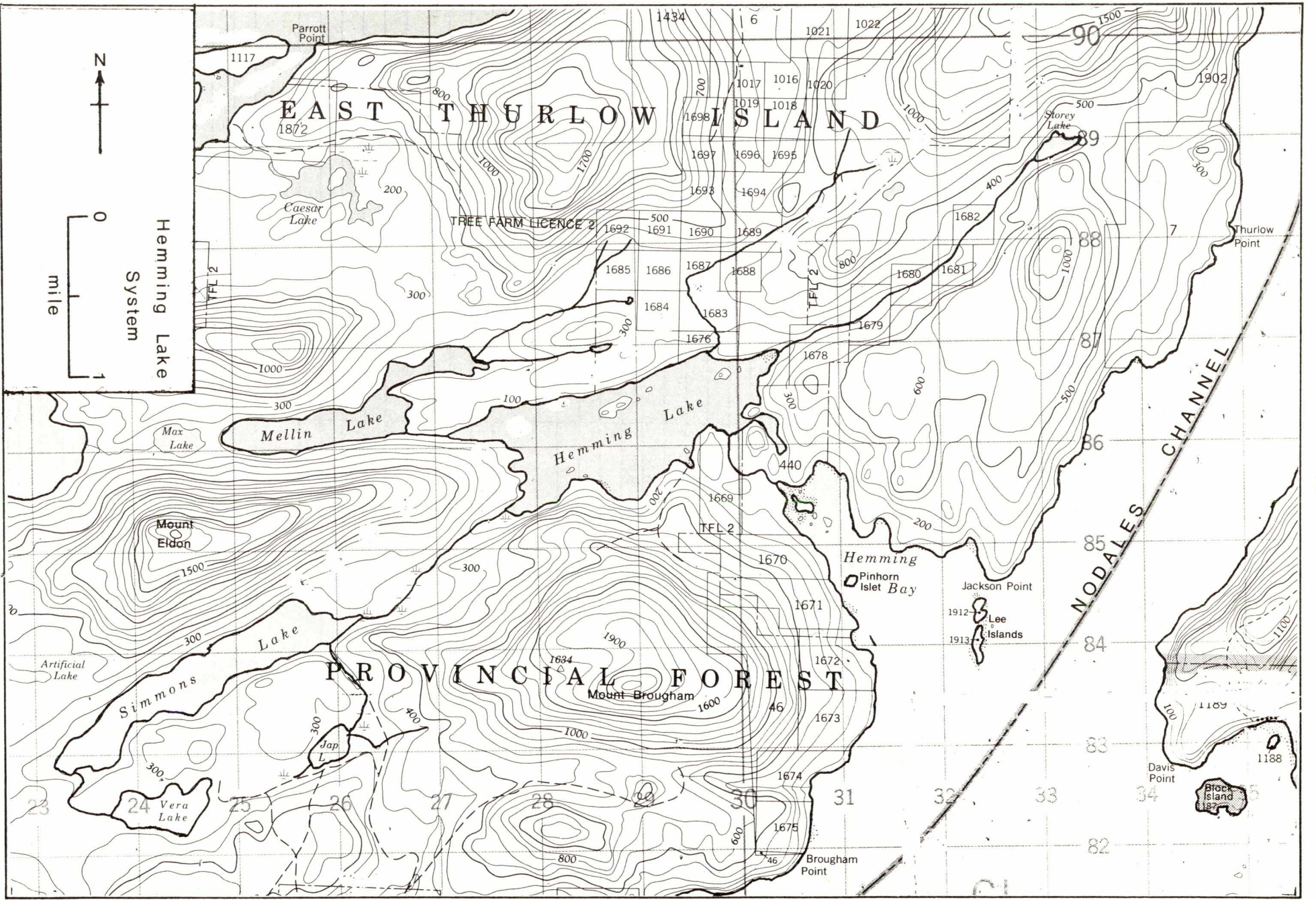
ESCAPEMENT RECORD FOR

(Hanson's Creek)

YEAR	SOCKEYE	CHINOOK	COHO	CHUM	PINK	STEELHEAD	
1947							
48							
49							
50							
51							
52			NO RECORDS PRIOR TO 1954 (Except for 1937)				
53							
54				200			
55				NO RECORDS			
56				200			
57				25			
58				400			
59				UNK			
60				200			
61				400			
62				N/O			
63				200			
64				200			
65				750			
66				200			
67				75			
68				400			
69			25	200			
70			25	25			
71			N/O	200			
72			N/O	400			
73			25	500			
74			N/O	25			
75			N/O	200			
76							
77							
78							
79							
80							
81							
82							
83							
84							
85							
Time							
Arr.				OCT			
Start			NOV	L OCT			
Peak			NOV	NOV			
End			L NOV	L NOV			

REMARKS





0  
1  
mile

Hemming Lake  
System

# EAST THURLOW ISLAND

# PROVINCIAL FOREST

NODALES CHANNEL

NAME OF STREAM HEMMING LAKE SYSTEM  
 CONSERVATION DISTRICT 5 STATISTICAL AREA 13  
 LOCATION OF MOUTH Flows into Hemming Bay, E. side of East Thurlow Is., Rge. 1 -  
 Coast Dist. \_\_\_\_\_ POSITION 50 125 S.E.  
 LENGTH \_\_\_\_\_ MI. WIDTH \_\_\_\_\_ FT. DRAINAGE \_\_\_\_\_ SQ. MI.  
 COMPOSITION: BEDROCK \_\_\_\_\_ BOULDER \_\_\_\_\_ COARSE \_\_\_\_\_ FINE \_\_\_\_\_  
 SILT & SAND \_\_\_\_\_ UNCLASSIFIED \_\_\_\_\_

## GRADIENT:

FALL IN FT/000

0.0 - 2.5

2.5 - 5.0

5.0 - 7.5

7.5 - 10.0

&gt; 10.0

WETTED AREA \_\_\_\_\_ SQ. YD. SPAWNING AREA \_\_\_\_\_ SQ. YD.

DISCHARGE \_\_\_\_\_ CFS MAX \_\_\_\_\_ MIN \_\_\_\_\_

TEMPERATURE \_\_\_\_\_

BARRIERS OR POINTS OF DIFFICULT ASCENT \_\_\_\_\_

- Passable 5 ft. falls at 1.5 mi.

## SPAWNING DISTRIBUTION:

SPECIES

SECTION OF STREAM USED

SOCKEYE

CHINOOK

COHO

Hemming & Mellin Lake tributary streams

CHUM

PINK (ODD YR)

PINK (EVEN YR)

STEELHEAD

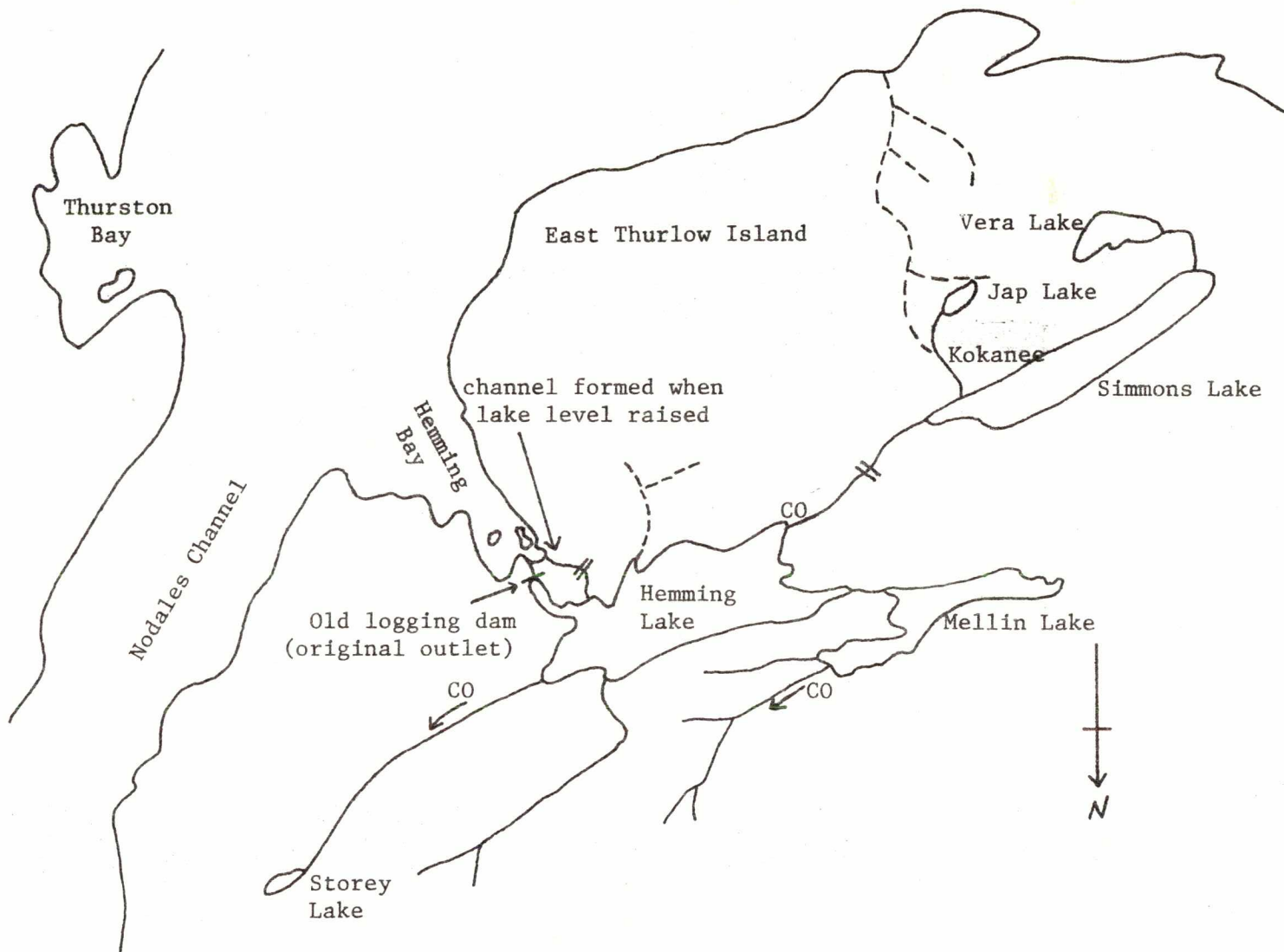
POTENTIAL OF INACCESSIBLE PORTION OF STREAM \_\_\_\_\_

## GENERAL REMARKS:

- A logging contractor is operating in a small tributary stream off Hemming Lake.  
(1974)

- Logging operations are renewed in the vicinity of Simmons Lake. (1975)

Sketch of Hemming Lake System, 1975  
(spawning grounds)



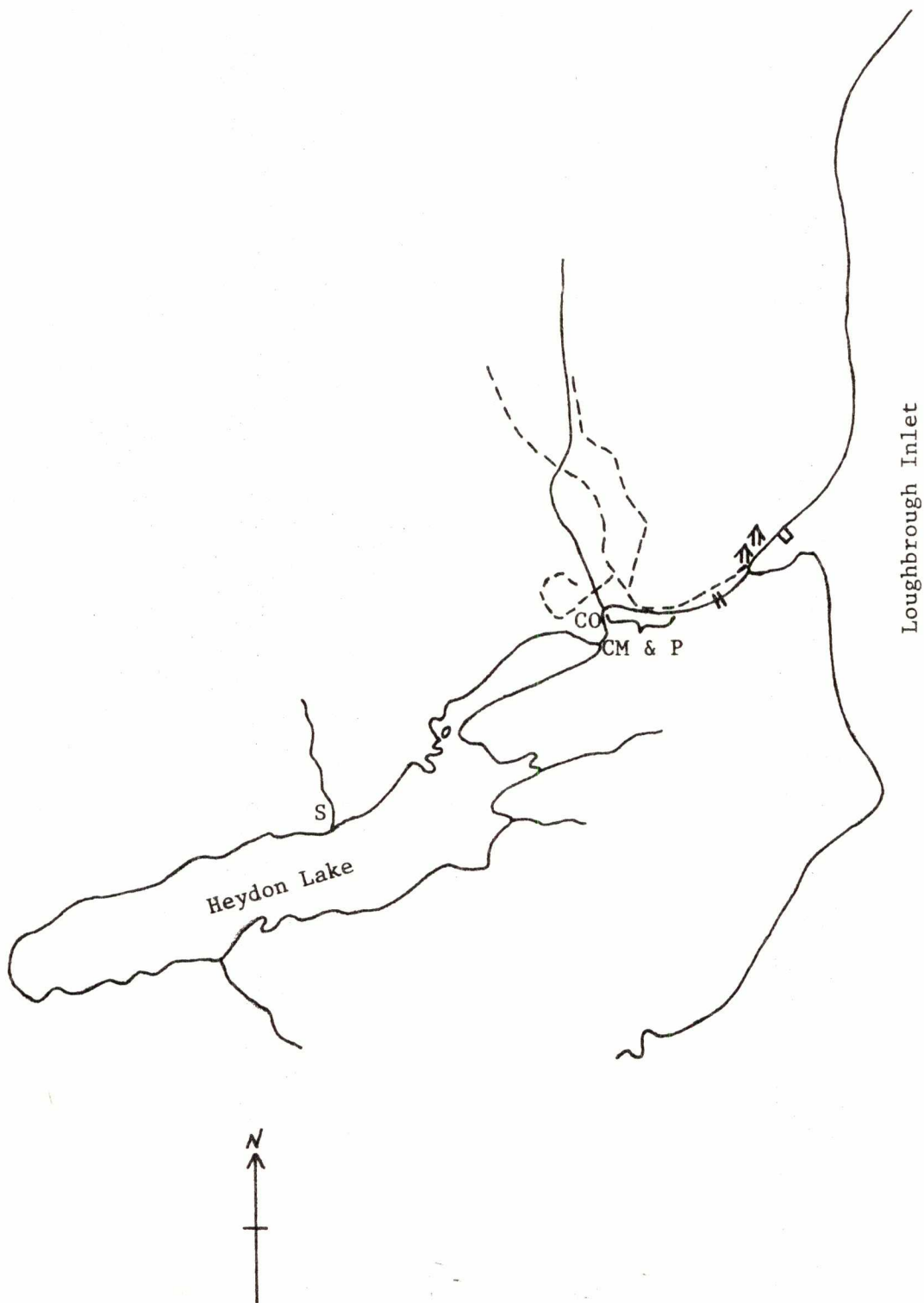
ESCAPEMENT RECORD FOR HEMMING LAKE SYSTEM

YEAR	SOCKEYE	CHINOOK	COHO	CHUM	PINK	STEELHEAD
1947			400	3500	400	
48			200	400	400	
49			200	750	25	
50			400	750	400	
51			200	750	75	
52			400	400	75	
53			200	75	25	
54			200	75	N/O	
55			75	25	N/O	
56			200	200	75	
57			400	750	25	
58			25	200	200	
59			200	25	25	
60			200	200	N/O	
61			200	N/O	N/O	
62			400	200	N/O	
63			400	25	N/O	
64			400	75	200	
65			750	N/O	N/O	
66			400	75	N/O	
67			200	N/O	N/O	
68			400	N/O	N/O	
69			750	N/O	N/O	
70			750	N/O	N/O	
71			750	N/O	N/O	
72			400	N/O	N/O	
73			750	N/O	N/O	
74			750	N/O	N/O	
75			400	N/O	N/O	
76						
77						
78						
79						
80						
81						
82						
83						
84						
85						
Time						
Arr.			SEPT			
Start			SEPT	OCT	SEPT	
Peak			OCT	NOV	SEPT	
End			NOV	NOV	OCT	

REMARKS

HEYDON CREEK: For topographical map, refer to PHILLIPS RIVER, page 107.

Sketch of Heydon Creek, 1975  
(spawning grounds)



NAME OF STREAM HEYDON CREEK

CONSERVATION DISTRICT 5 STATISTICAL AREA 13

LOCATION OF MOUTH Flows N.E. into Heydon Bay, Loughborough Inlet, Rge. 1 - Coast

Dist. \_\_\_\_\_ POSITION 50 125 N.W.

LENGTH \_\_\_\_\_ MI. WIDTH \_\_\_\_\_ FT. DRAINAGE \_\_\_\_\_ SQ. MI.

COMPOSITION: BEDROCK \_\_\_\_\_ BOULDER \_\_\_\_\_ COARSE \_\_\_\_\_ FINE \_\_\_\_\_

SILT & SAND \_\_\_\_\_ UNCLASSIFIED \_\_\_\_\_

GRADIENT:

FALL IN FT/000

0.0 - 2.5
2.5 - 5.0
5.0 - 7.5
7.5 - 10.0
> 10.0

WETTED AREA \_\_\_\_\_ SQ. YD. SPAWNING AREA \_\_\_\_\_ SQ. YD.

DISCHARGE \_\_\_\_\_ CFS MAX \_\_\_\_\_ MIN \_\_\_\_\_

TEMPERATURE \_\_\_\_\_

BARRIERS OR POINTS OF DIFFICULT ASCENT \_\_\_\_\_

- Passable falls at 1.0 mi.

SPAWNING DISTRIBUTION:

SPECIES	SECTION OF STREAM USED
SOCKEYE	Heydon Lake
CHINOOK	
COHO	throughout
CHUM	throughout
PINK (ODD YR)	throughout
PINK (EVEN YR)	throughout
STEELHEAD	

POTENTIAL OF INACCESSIBLE PORTION OF STREAM \_\_\_\_\_

GENERAL REMARKS:

- A new logging camp was established at Heydon Bay. Cutting operations should not affect the stream proper as this area has been previously logged. (1973)



ESCAPEMENT RECORD FOR HEYDON CREEK

YEAR	SOCKEYE	CHINOOK	COHO	CHUM	PINK	STEELHEAD
1947	3500		1500	7500	3500	
48	750		750	1500	1500	
49	3500		400	1500	1500	
50	3500		400	7500	3500	
51	7500		750	7500	200	
52	1500		1500	3500	35000	
53	200		200	1500	3500	
54	200		75	7500	750	
55	1500		200	400	200	
56	750		25	3500	1500	
57	7500		25	15000	1500	
58	75		750	15000	750	
59	200		200	7500	1500	
60	N/O		200	1500	400	
61	400		400	7500	N/O	
62	400		400	7500	1500	
63	400	N/O	400	7500	75	
64	200	N/O	750	15000	3500	
65	400	N/O	750	750	N/O	
66	7500	25	1500	7500	15000	
67	3500	N/O	750	15000	3500	
68	3500	N/O	3500	35000	35000	
69	3500	N/O	200	7500	200	
70	7500	N/O	1500	75000	15000	
71	4500	N/O	750	7500	3500	
72	3500	25	400	35000	3500	
73	3500	N/O	400	35000	400	
74	3500	N/O	1500	10000	10000	
75	3500	N/O	200	3500	400	
76						
77						
78						
79						
80						
81						
82						
83						
84						
85						
<b>Time</b>						
<b>Arr.</b>	L JUNE		L SEPT	E OCT	L AUG	
<b>Start</b>	E JULY	OCT	OCT	OCT	SEPT	
<b>Peak</b>	E AUG	OCT	NOV	NOV	SEPT	
<b>End</b>	AUG	NOV	NOV	NOV	OCT	

REMARKS





NAME OF STREAM HOMATHKO RIVER

CONSERVATION DISTRICT 5 STATISTICAL AREA 13

LOCATION OF MOUTH Flows S.W. and S. into head of Bute Inlet, Rge. 1 - Coast Dist.

POSITION 50 124 N.W.

LENGTH 26.5 MI. WIDTH \_\_\_\_\_ FT. DRAINAGE 2060 SQ. MI.

COMPOSITION: BEDROCK \_\_\_\_\_ BOULDER \_\_\_\_\_ COARSE \_\_\_\_\_ FINE \_\_\_\_\_

SILT & SAND \_\_\_\_\_ UNCLASSIFIED \_\_\_\_\_

GRADIENT:

FALL IN FT/000

0.0 - 2.5	
2.5 - 5.0	
5.0 - 7.5	
7.5 - 10.0	
> 10.0	

WETTED AREA \_\_\_\_\_ SQ. YD. SPAWNING AREA \_\_\_\_\_ SQ. YD.

DISCHARGE 10,952 CFS MAX 111,000 cfs 06/09/57 MIN 950 cfs 08/03/57

TEMPERATURE \_\_\_\_\_

BARRIERS OR POINTS OF DIFFICULT ASCENT \_\_\_\_\_

SPAWNING DISTRIBUTION:

SPECIES	SECTION OF STREAM USED
SOCKEYE	
CHINOOK	to 26.5 mi.
COHO	to 23 mi. & tributaries
CHUM	to 25 mi.
PINK (ODD YR)	to 12 mi.
PINK (EVEN YR)	to 12 mi.
STEELHEAD	

POTENTIAL OF INACCESSIBLE PORTION OF STREAM \_\_\_\_\_

GENERAL REMARKS:

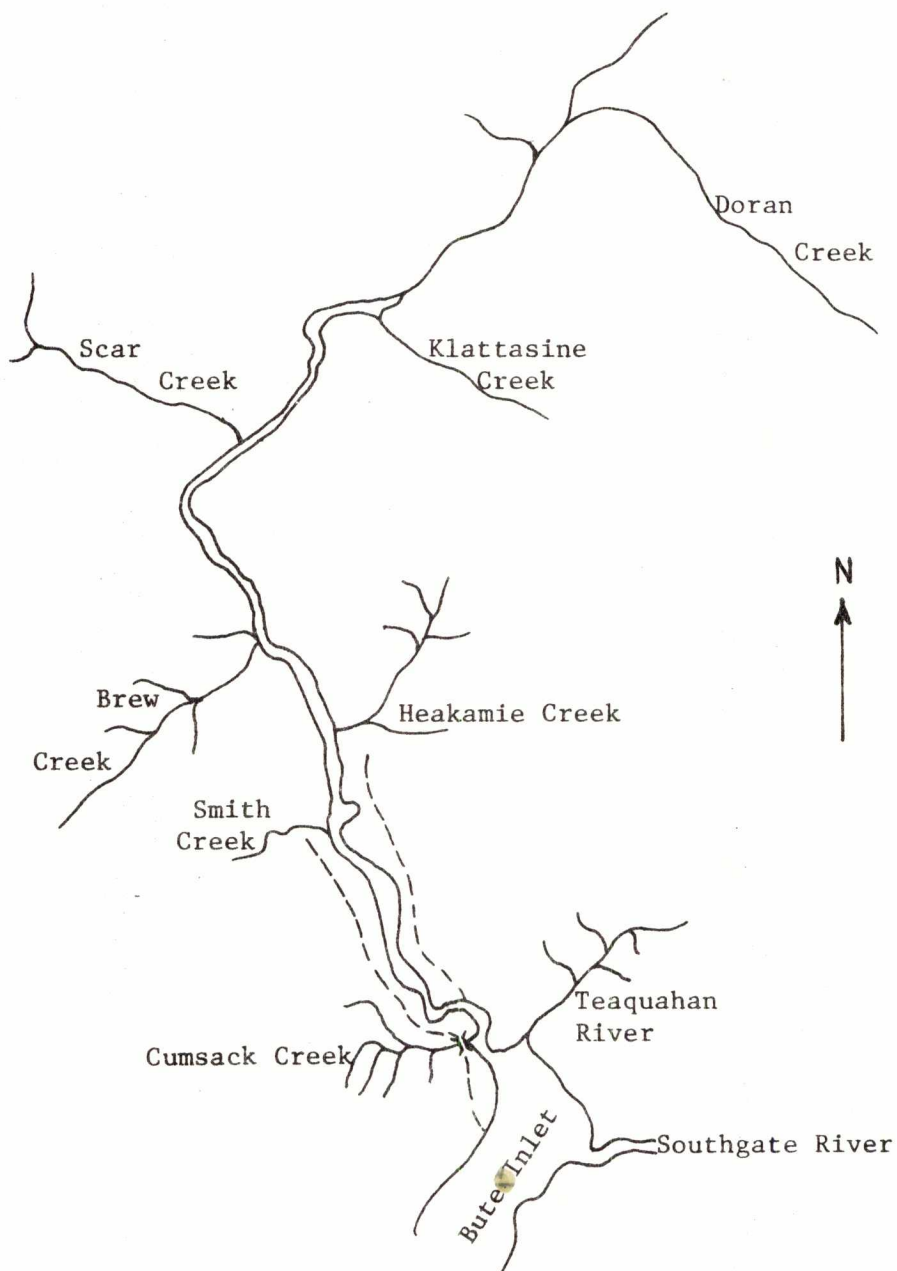
- Logging is in progress on the east side of the river. (1969)
- Logging is being conducted on Smith Creek. (1970)
- A major land slide at Klattasine Creek valley, at 28 mi., caused all bars and side channels in the lower Homathko River to become coated with silt and accumulations of broken and uprooted trees. It was thought that mortality to recently deposited salmon eggs in the Homathko system would be extremely high. (1973)
- Bay Forest Products are continuing to extend their logging roads adjacent to the main river and plans call for a bridge at mile 23. (1974)

GENERAL REMARKS: (Cont'd)

## References:

- Levings, C.D. 1973. Observations on the Inter-tidal Fauna at the Head of Bute Inlet (Deltas at the head of Bute Inlet appear to support high standing crops of benthic invertebrates potentially available to juvenile salmonids). Pacific Environment Institute. Memo. 31-3-H2 4p.

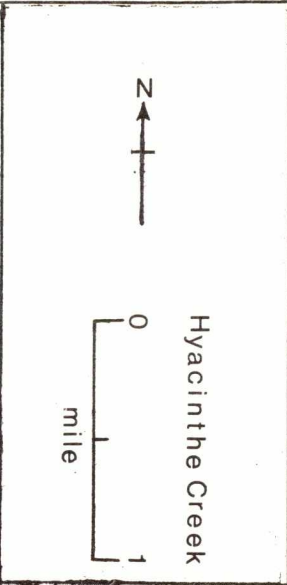
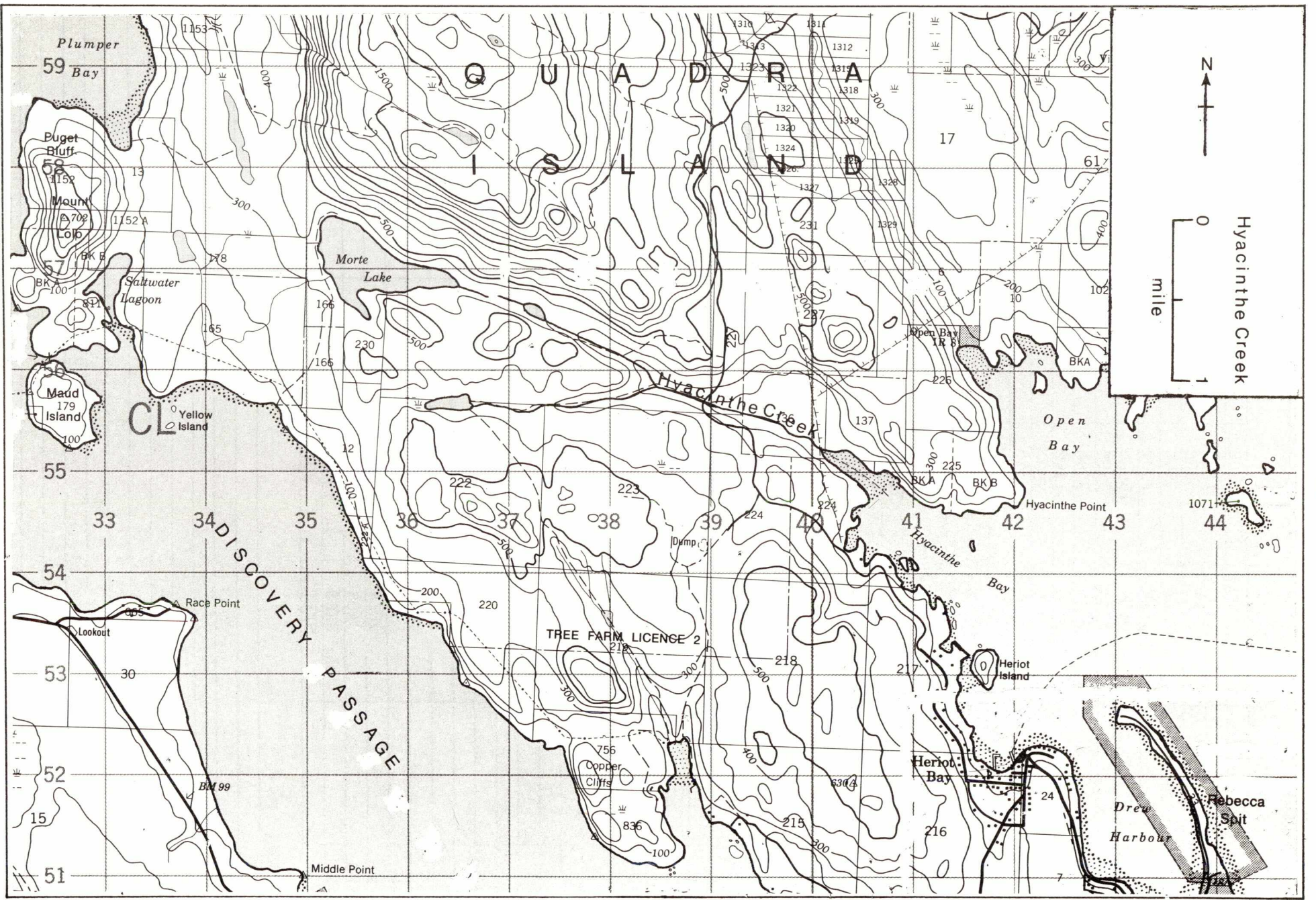
Sketch of Homathko River, 1969



ESCAPEMENT RECORD FOR HOMATHKO RIVER

YEAR	SOCKEYE	CHINOOK	COHO	CHUM	PINK	STEELHEAD
1947		15000	7500	75000	7500	400
48		3500	7500	35000	3500	400
49		7500	3500	7500	3500	750
50		7500	3500	7500	750	750
51		7500	7500	15000	7500	400
52		3500	15000	35000	1500	750
53		7500	3500	15000	7500	750
54		7500	7500	7500	400	200
55		3500	1500	3500	3500	200
56		7500	3500	200	200	7500
57		3500	7500	75000	400	1500
58		7500	7500	3500	200	400
59		7500	3500	7500	7500	UNK
60		3500	3500	3500	N/O	UNK
61		1500	3500	3500	N/O	
62		3500	3500	3500	1500	
63		3500	3500	3500	N/O	
64		7500	3500	7500	1500	
65		3500	3500	400	N/O	
66		3500	3500	3500	1500	
67		3500	3500	3500	N/O	
68		3500	3500	3500	1500	UNK
69		1500	400	200	N/O	UNK
70		3500	3500	3500	1500	UNK
71		3500	3500	1500	N/O	UNK
72		3500	1500	75000	750	UNK
73		1500	1500	7500	75	UNK
74		3500	3500	7500	N/O	UNK
75		3500	1500	3500	N/O	UNK
76						
77						
78						
79						
80						
81						
82						
83						
84						
85						
Time						
Arr.		JULY	AUG	OCT	AUG	
Start		AUG	SEPT	OCT	AUG	
Peak		E SEPT	OCT	NOV	E SEPT	
End		SEPT	NOV	E DEC	SEPT	

REMARKS



NAME OF STREAM (Not Gazetted) (Hyacinthe Creek)  
 CONSERVATION DISTRICT 5 STATISTICAL AREA 13  
 LOCATION OF MOUTH Flows E. into Hyacinthe Bay, E. side of Quadra Is. - Sayward  
 Dist. \_\_\_\_\_ POSITION 50 125 S.E.  
 LENGTH \_\_\_\_\_ MI. WIDTH \_\_\_\_\_ FT. DRAINAGE \_\_\_\_\_ SQ. MI.  
 COMPOSITION: BEDROCK \_\_\_\_\_ BOULDER \_\_\_\_\_ COARSE \_\_\_\_\_ FINE \_\_\_\_\_  
 SILT & SAND \_\_\_\_\_ UNCLASSIFIED \_\_\_\_\_

## GRADIENT:

FALL IN FT/000

0.0 - 2.5	
2.5 - 5.0	
5.0 - 7.5	
7.5 - 10.0	
> 10.0	

WETTED AREA \_\_\_\_\_ SQ. YD. SPAWNING AREA \_\_\_\_\_ SQ. YD.

DISCHARGE \_\_\_\_\_ CFS MAX \_\_\_\_\_ MIN \_\_\_\_\_

TEMPERATURE \_\_\_\_\_

BARRIERS OR POINTS OF DIFFICULT ASCENT \_\_\_\_\_

- Beaver dams are broached as required.

## SPAWNING DISTRIBUTION:

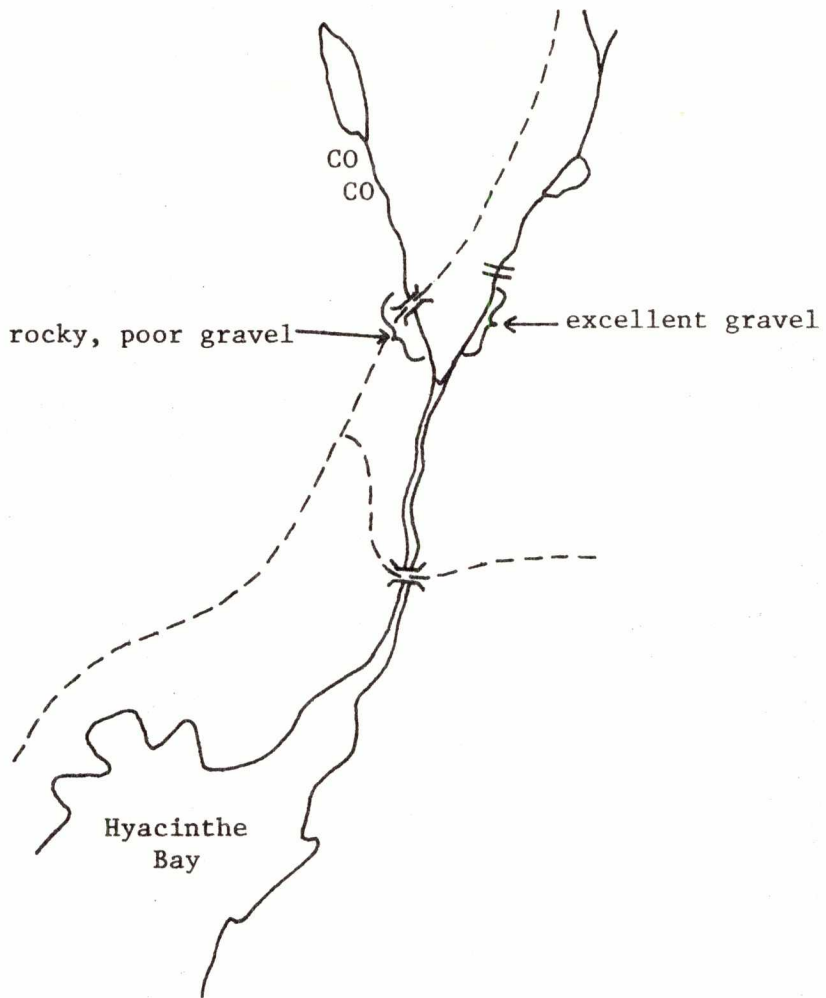
SPECIES	SECTION OF STREAM USED
SOCKEYE	
CHINOOK	
COHO	upper stream & left hand fork
CHUM	main stream & right hand fork
PINK (ODD YR)	lower 0.5 mi.
PINK (EVEN YR)	lower 0.5 mi.
STEELHEAD	

POTENTIAL OF INACCESSIBLE PORTION OF STREAM \_\_\_\_\_

## GENERAL REMARKS:

- Some stream clearing was carried out in 1973.
- Excellent spawning grounds for chum and pink salmon are located in the lower 0.75 mi. of the main creek and in the lower 0.5 mi. of a tributary draining into the main creek from the west.

Sketch of Hyacinthe Creek, 1969  
(spawning grounds)









N  
↑  
0  
1  
mile  
Kanish Creek

NAME OF STREAM (Not Gazetted) (Kanish Creek)

CONSERVATION DISTRICT 5 STATISTICAL AREA 13

LOCATION OF MOUTH Flows W. into Small Inlet, W. side of Quadra Is. - Sayward

Dist. POSITION 50 125 S.E.

LENGTH MI. WIDTH FT. DRAINAGE SQ. MI.

COMPOSITION: BEDROCK BOULDER COARSE FINE

SILT & SAND UNCLASSIFIED

GRADIENT:

FALL IN FT/000

0.0 - 2.5	
2.5 - 5.0	
5.0 - 7.5	
7.5 - 10.0	
> 10.0	

WETTED AREA SQ. YD. SPAWNING AREA SQ. YD.

DISCHARGE CFS MAX MIN

TEMPERATURE

BARRIERS OR POINTS OF DIFFICULT ASCENT

- Impassable falls at 1.0 mi.

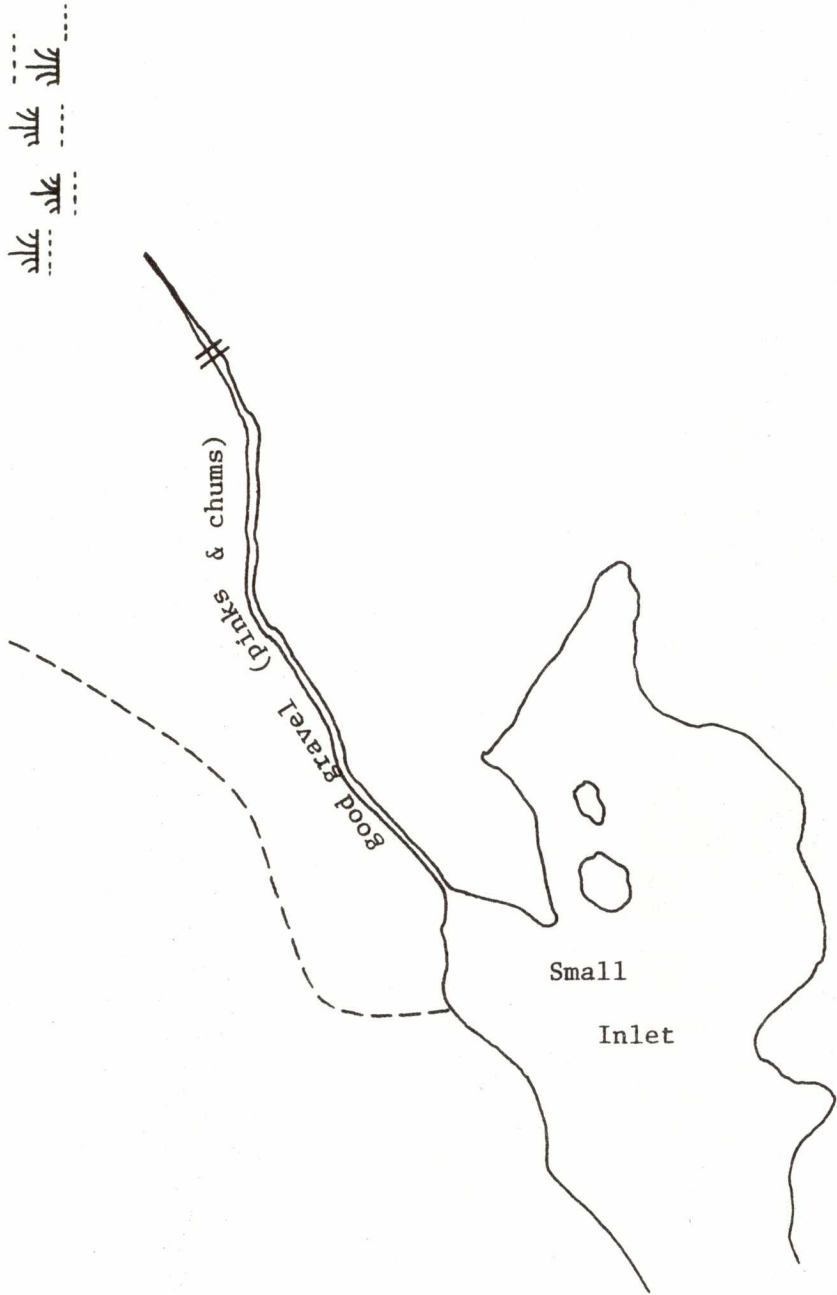
SPAWNING DISTRIBUTION:

SPECIES	SECTION OF STREAM USED
SOCKEYE	
CHINOOK	
COHO	lower 0.5 mi.
CHUM	lower 0.5 mi.
PINK (ODD YR)	lower 0.5 mi.
PINK (EVEN YR)	lower 0.5 mi.
STEELHEAD	

POTENTIAL OF INACCESSIBLE PORTION OF STREAM

GENERAL REMARKS:

Sketch of Kanish Creek, 1970  
(spawning grounds)







NAME OF STREAM (Not Gazetted) (Knox Bay Creek)

CONSERVATION DISTRICT 5 STATISTICAL AREA 13

LOCATION OF MOUTH Flows W. and S. into Knox Bay, S. side of West Thurlow Is.,

Rge. 1 - Coast Dist. POSITION 50 125 S.W.

LENGTH 1.0 MI. WIDTH FT. DRAINAGE SQ. MI.

COMPOSITION: BEDROCK BOULDER COARSE FINE

SILT & SAND UNCLASSIFIED

GRADIENT:

FALL IN FT/000

0.0 - 2.5
2.5 - 5.0
5.0 - 7.5
7.5 - 10.0
> 10.0

WETTED AREA SQ. YD. SPAWNING AREA SQ. YD.

DISCHARGE CFS MAX MIN

TEMPERATURE

BARRIERS OR POINTS OF DIFFICULT ASCENT

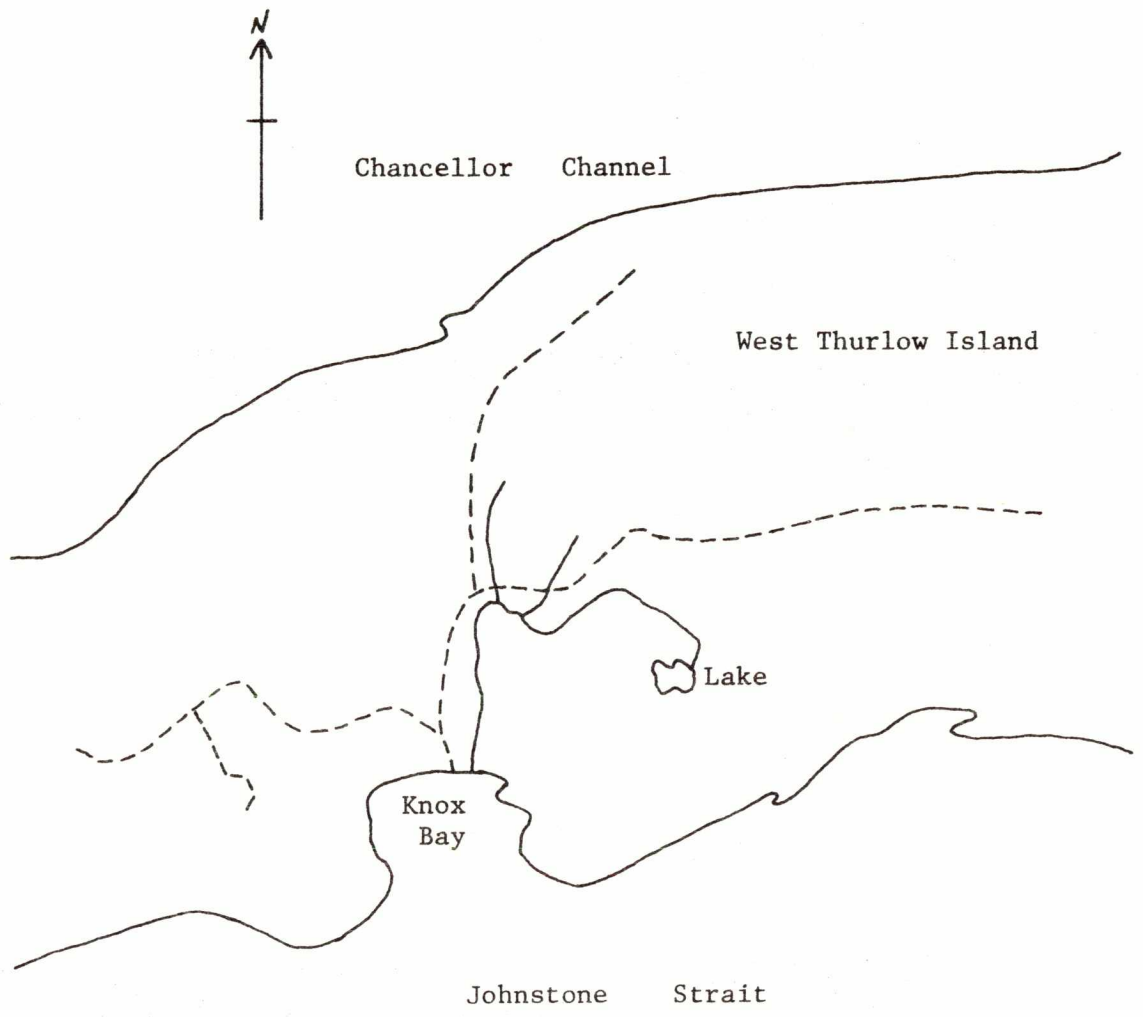
SPAWNING DISTRIBUTION:

SPECIES	SECTION OF STREAM USED
SOCKEYE	
CHINOOK	
COHO	lower 1.0 mi.
CHUM	lower 1.0 mi.
PINK (ODD YR)	
PINK (EVEN YR)	
STEELHEAD	

POTENTIAL OF INACCESSIBLE PORTION OF STREAM

GENERAL REMARKS:

- A minor stream with limited spawning area.





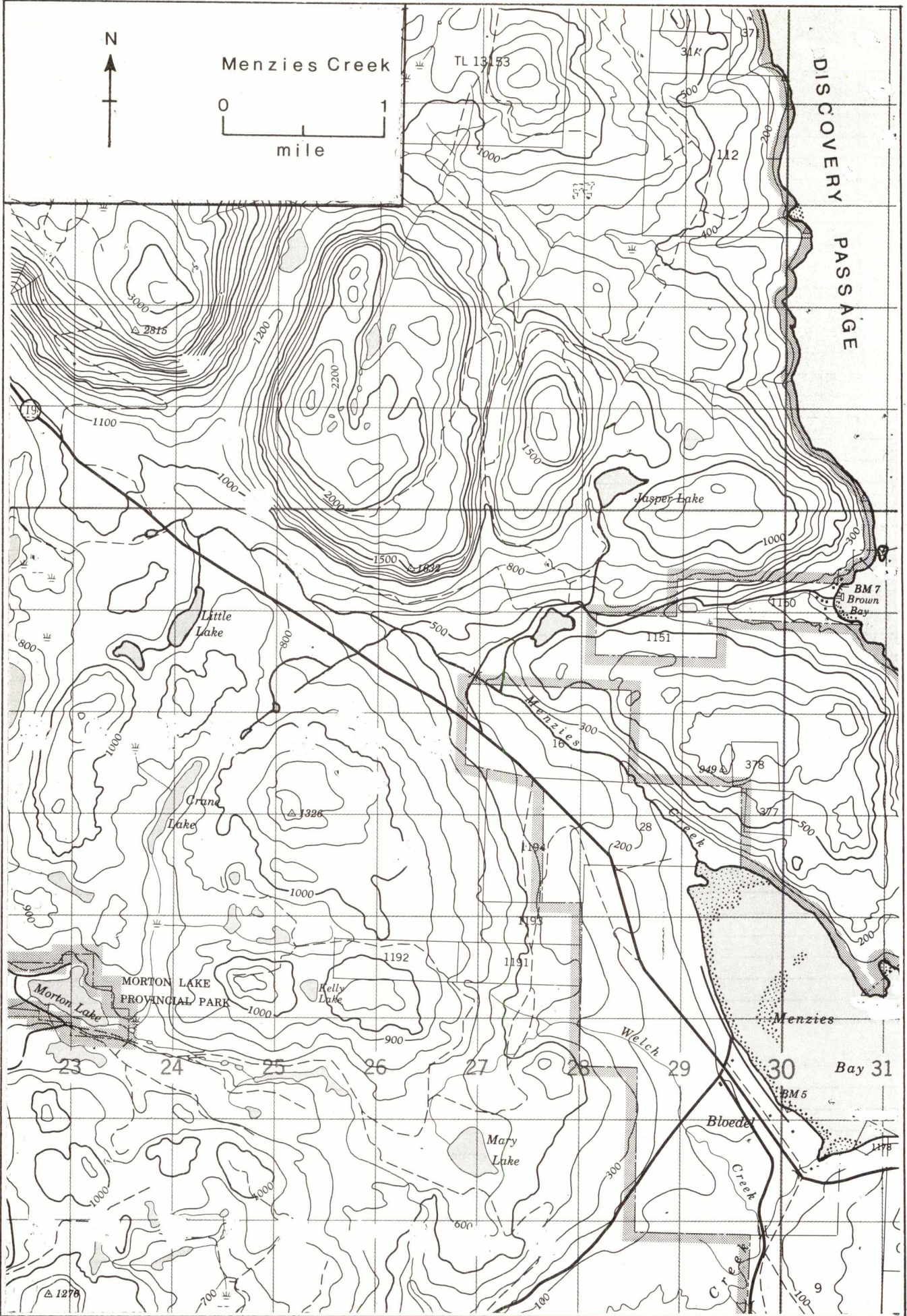




Menzies Creek



DISCOVERY  
PASSAGE



NAME OF STREAM MENZIES CREEK

CONSERVATION DISTRICT 5 STATISTICAL AREA 13

LOCATION OF MOUTH Flows S.E. into Menzies Bay, Discovery Passage - Sayward Dist.

POSITION 50 125 S.E.

LENGTH 1.0 MI. WIDTH \_\_\_\_\_ FT. DRAINAGE \_\_\_\_\_ SQ. MI.

COMPOSITION: BEDROCK \_\_\_\_\_ BOULDER \_\_\_\_\_ COARSE \_\_\_\_\_ FINE \_\_\_\_\_

SILT & SAND \_\_\_\_\_ UNCLASSIFIED \_\_\_\_\_

GRADIENT:

FALL IN FT/000

0.0 - 2.5	
2.5 - 5.0	
5.0 - 7.5	
7.5 - 10.0	
> 10.0	

WETTED AREA \_\_\_\_\_ SQ. YD. SPAWNING AREA \_\_\_\_\_ SQ. YD.

DISCHARGE \_\_\_\_\_ CFS MAX \_\_\_\_\_ MIN \_\_\_\_\_

TEMPERATURE \_\_\_\_\_

BARRIERS OR POINTS OF DIFFICULT ASCENT \_\_\_\_\_

SPAWNING DISTRIBUTION:

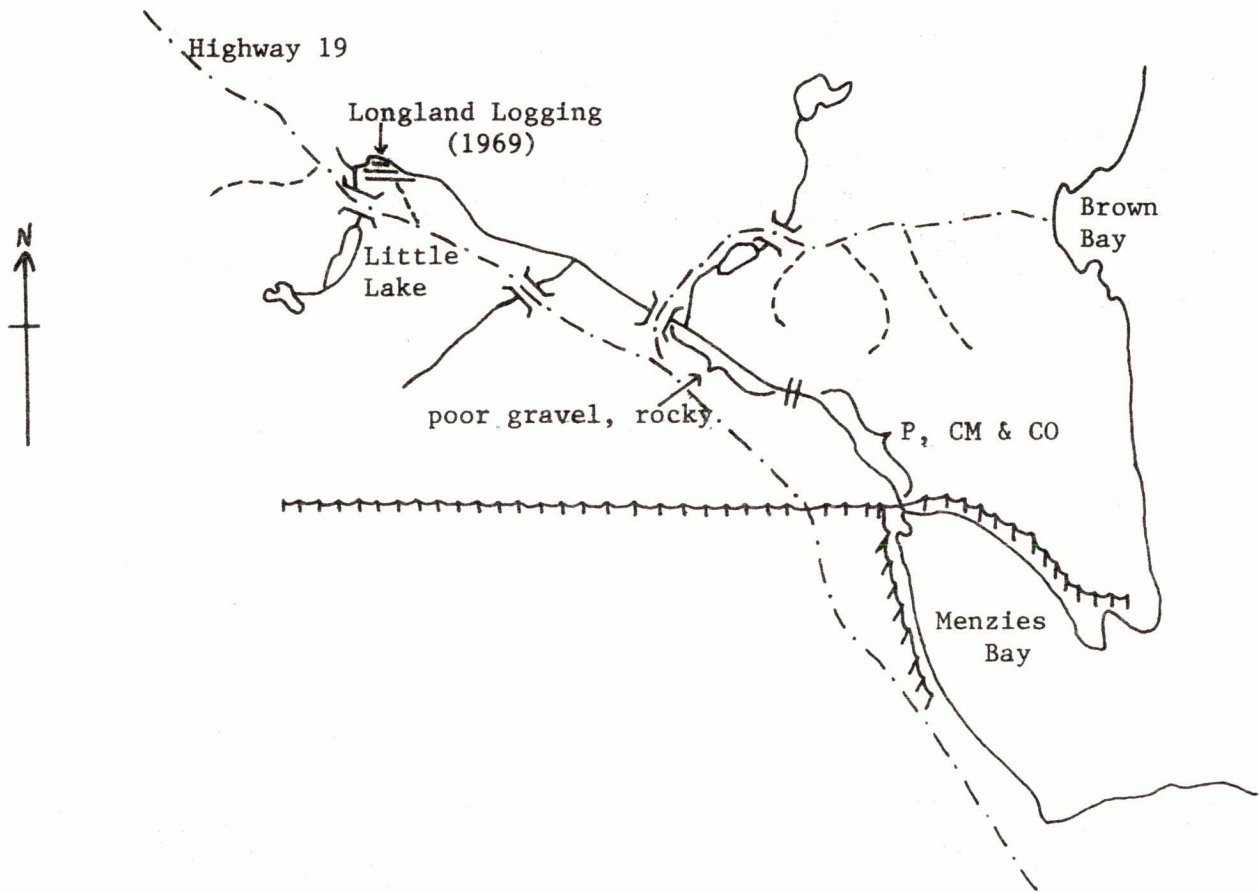
SPECIES	SECTION OF STREAM USED
SOCKEYE	
CHINOOK	
COHO	lower 1.0 mi.
CHUM	lower 1.0 mi.
PINK (ODD YR)	lower 1.0 mi.
PINK (EVEN YR)	lower 1.0 mi.
STEELHEAD	

POTENTIAL OF INACCESSIBLE PORTION OF STREAM \_\_\_\_\_

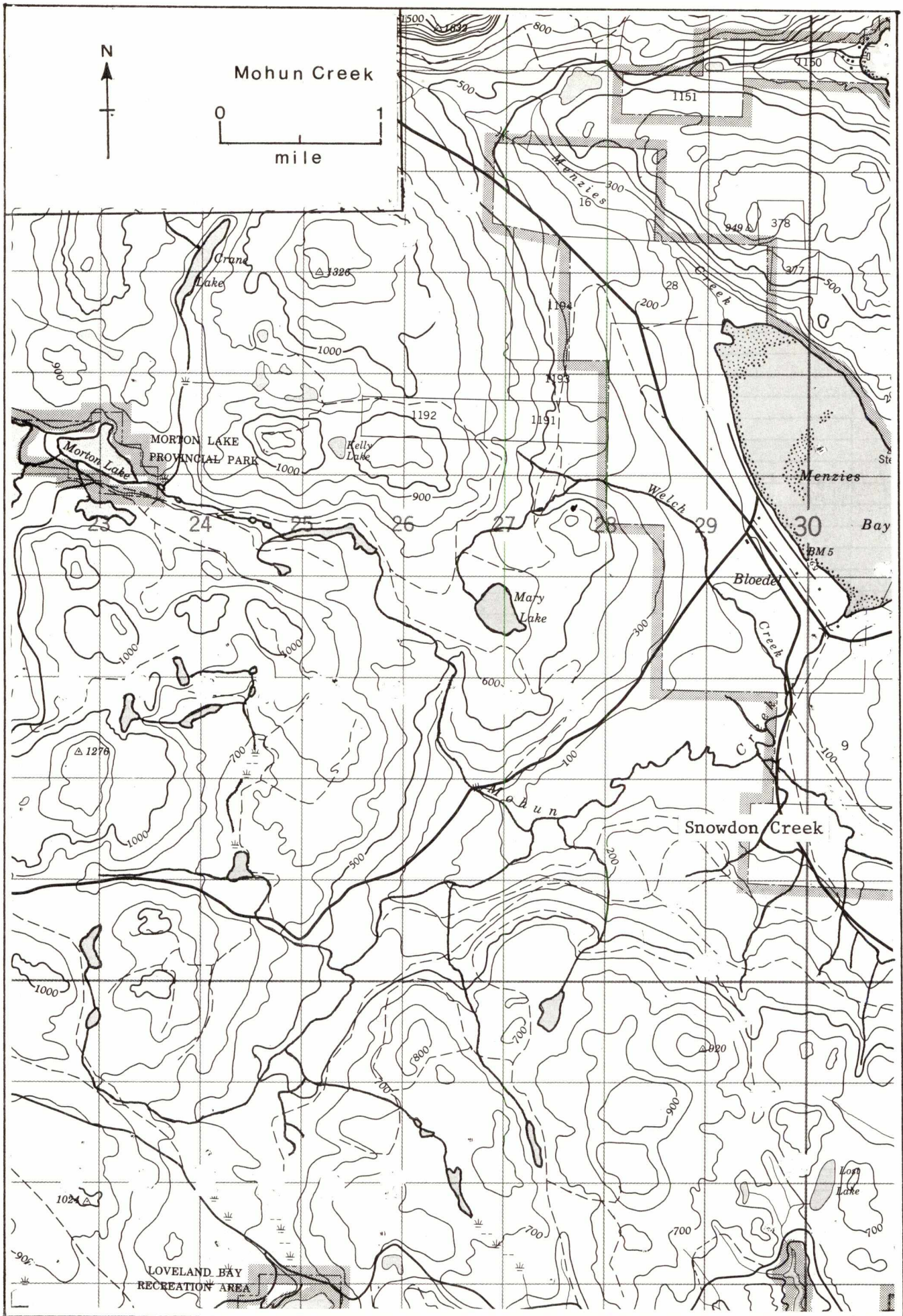
GENERAL REMARKS:

- The potential of this stream is very limited since it's almost dry in the summer months. (1973)

Sketch of Menzies Creek, 1975  
(spawning grounds)







NAME OF STREAM MOHUN CREEK (Trout Creek)

CONSERVATION DISTRICT 5 STATISTICAL AREA 13

LOCATION OF MOUTH Flows S.E. and N.E. into Menzies Bay, Discovery Passage -

Sayward Dist. \_\_\_\_\_ POSITION 50 125 S.E.

LENGTH 6.0 MI. WIDTH \_\_\_\_\_ FT. DRAINAGE \_\_\_\_\_ SQ. MI.

COMPOSITION: BEDROCK \_\_\_\_\_ BOULDER \_\_\_\_\_ COARSE \_\_\_\_\_ FINE \_\_\_\_\_

SILT & SAND \_\_\_\_\_ UNCLASSIFIED \_\_\_\_\_

GRADIENT:

FALL IN FT/000

0.0 - 2.5
2.5 - 5.0
5.0 - 7.5
7.5 - 10.0
> 10.0

WETTED AREA \_\_\_\_\_ SQ. YD. SPAWNING AREA \_\_\_\_\_ SQ. YD.

DISCHARGE \_\_\_\_\_ CFS MAX \_\_\_\_\_ MIN \_\_\_\_\_

TEMPERATURE \_\_\_\_\_

BARRIERS OR POINTS OF DIFFICULT ASCENT \_\_\_\_\_

- Falls at 6.0 mi. are normally impassable.

SPAWNING DISTRIBUTION:

SPECIES	SECTION OF STREAM USED
SOCKEYE	
CHINOOK	
COHO	main stream & tributaries
CHUM	main stream to Snowdon Creek
PINK (ODD YR)	1 to 5 mi.
PINK (EVEN YR)	1 to 5 mi.
STEELHEAD	

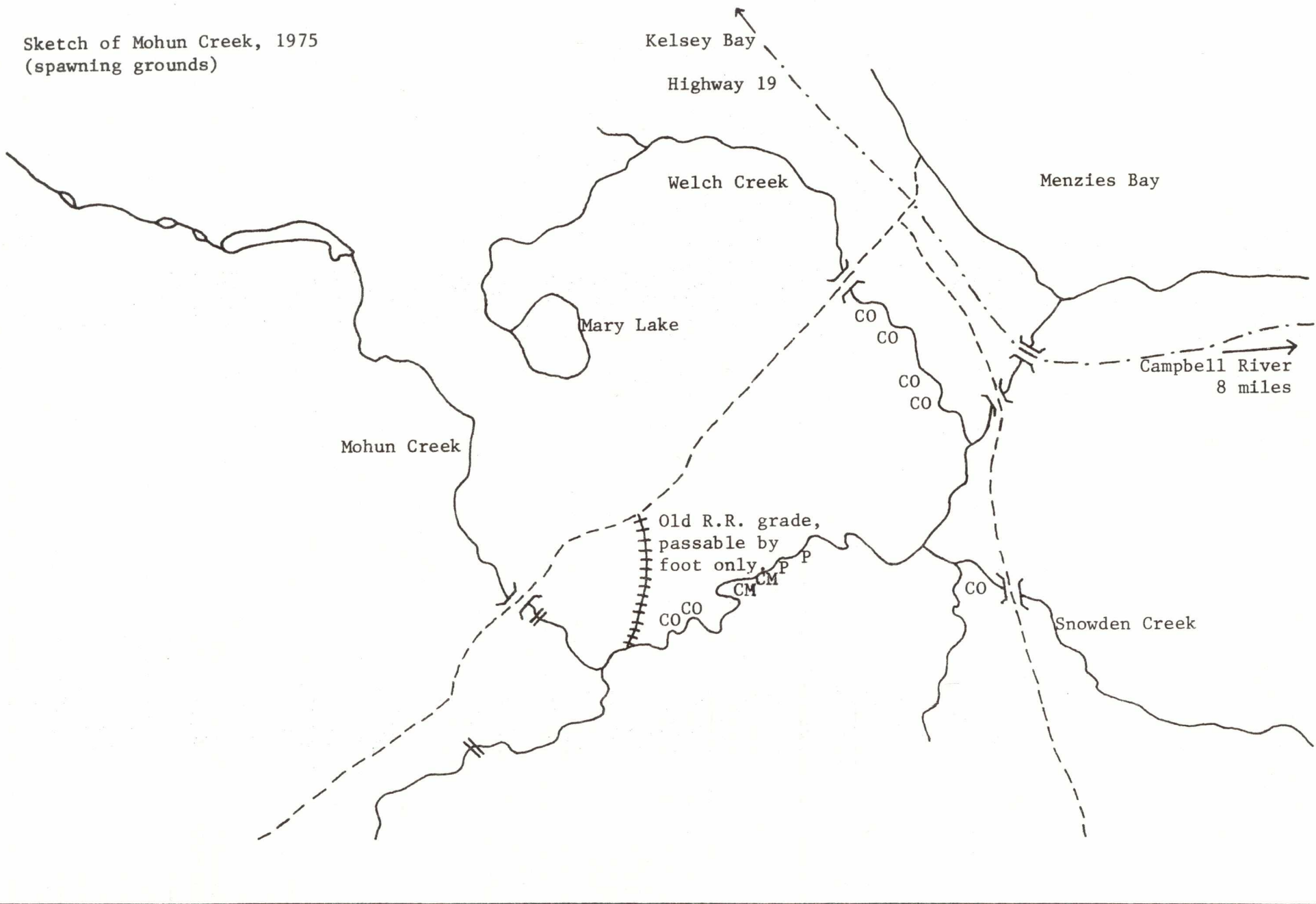
POTENTIAL OF INACCESSIBLE PORTION OF STREAM \_\_\_\_\_

GENERAL REMARKS:

- MacMillan Bloedel Ltd. improved a problem culvert on Welsh Creek. (1971)

- This stream is subject to heavy sport fishing of pinks. (1970)

Sketch of Mohun Creek, 1975  
(spawning grounds)

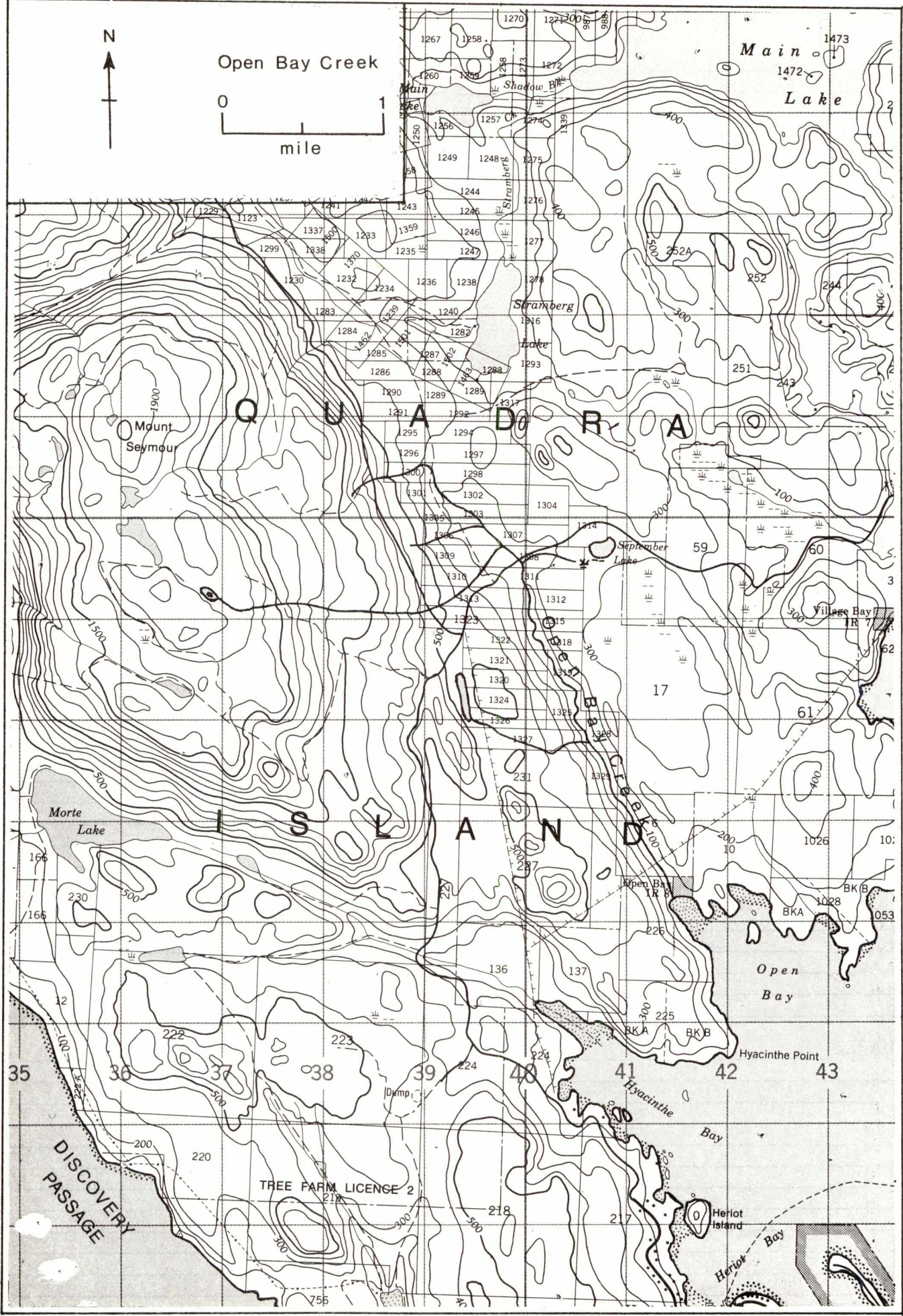
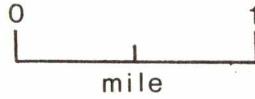








Open Bay Creek



NAME OF STREAM (Not Gazetted) (Open Bay Creek)

CONSERVATION DISTRICT 5 STATISTICAL AREA 13

LOCATION OF MOUTH Flows S.E. into Open Bay, E. side of Quadra Is. - Sayward Dist.

POSITION 50 125 S.E.

LENGTH 4.3 MI. WIDTH FT. DRAINAGE SQ. MI.

COMPOSITION: BEDROCK BOULDER COARSE FINE

SILT & SAND UNCLASSIFIED

GRADIENT:

FALL IN FT/000

0.0 - 2.5
2.5 - 5.0
5.0 - 7.5
7.5 - 10.0
> 10.0

WETTED AREA SQ. YD. SPAWNING AREA SQ. YD.

DISCHARGE CFS MAX MIN

TEMPERATURE

BARRIERS OR POINTS OF DIFFICULT ASCENT

SPAWNING DISTRIBUTION:

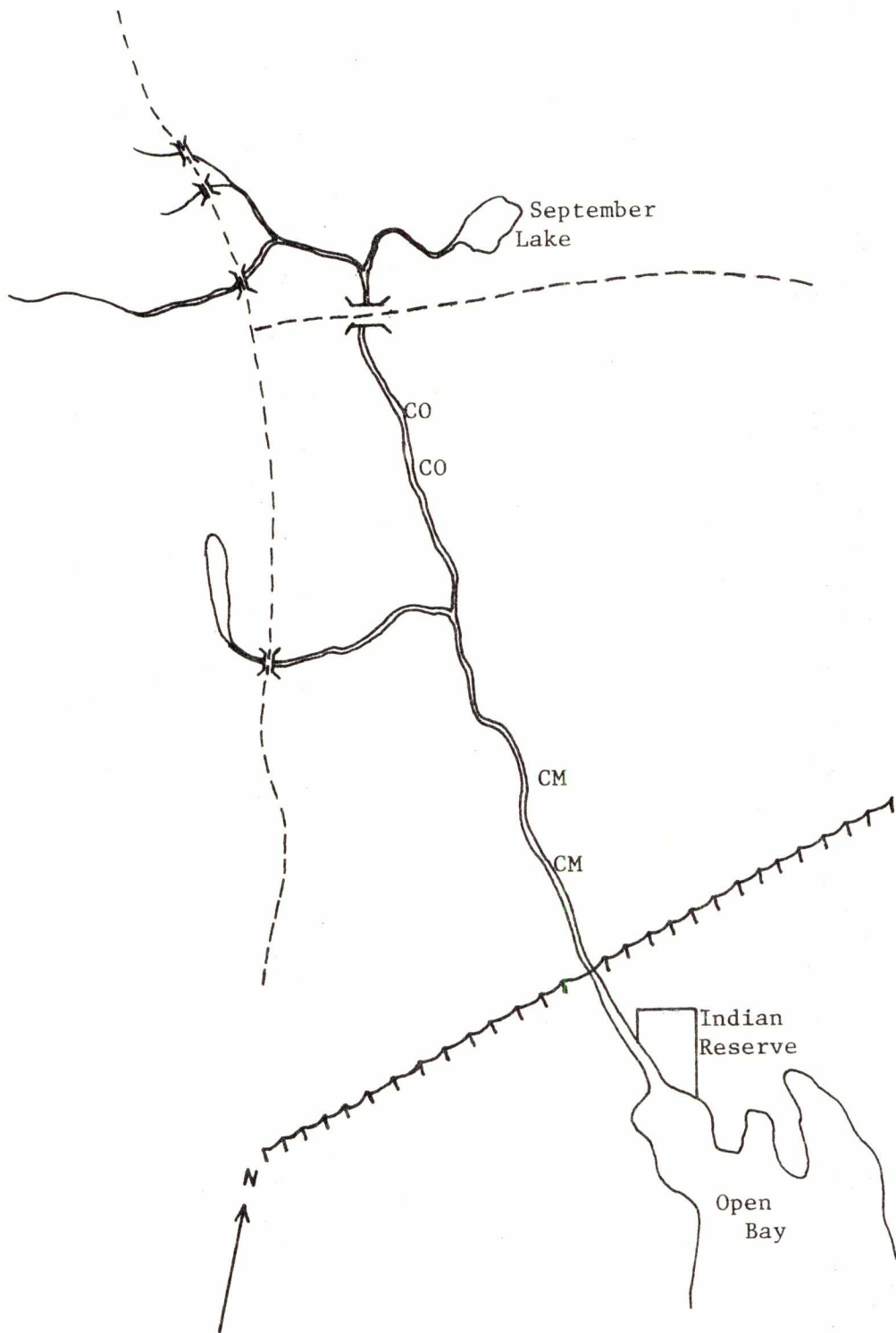
SPECIES	SECTION OF STREAM USED
SOCKEYE	
CHINOOK	
COHO	throughout
CHUM	to 4 mi., mainly lower 1 mi.
PINK (ODD YR)	
PINK (EVEN YR)	
STEELHEAD	

POTENTIAL OF INACCESSIBLE PORTION OF STREAM

GENERAL REMARKS:

- This stream was subject to an Indian food fishery in the 1960's (by permit).
- This is a fairly stable stream with good gravel. (1967)
- Some stream clearance work. (1970 & 1973)

Sketch of Open Bay Creek, 1969  
(spawning grounds)







NAME OF STREAM ORFORD RIVER

CONSERVATION DISTRICT 5 STATISTICAL AREA 13

LOCATION OF MOUTH Flows S.W. into Orford Bay, Bute Inlet, Rge. 1 - Coast Dist.

POSITION 50 124 N.W.

LENGTH 4.0 MI. WIDTH \_\_\_\_\_ FT. DRAINAGE \_\_\_\_\_ SQ. MI.

COMPOSITION: BEDROCK \_\_\_\_\_ BOULDER \_\_\_\_\_ COARSE \_\_\_\_\_ FINE \_\_\_\_\_

SILT & SAND \_\_\_\_\_ UNCLASSIFIED \_\_\_\_\_

GRADIENT:

FALL IN FT/000	
0.0 - 2.5	
2.5 - 5.0	
5.0 - 7.5	
7.5 - 10.0	
> 10.0	

WETTED AREA \_\_\_\_\_ SQ. YD. SPAWNING AREA \_\_\_\_\_ SQ. YD.

DISCHARGE \_\_\_\_\_ CFS MAX \_\_\_\_\_ MIN \_\_\_\_\_

TEMPERATURE \_\_\_\_\_

BARRIERS OR POINTS OF DIFFICULT ASCENT \_\_\_\_\_

- Impassable falls at 4.0 mi. in the main river.
- Impassable falls at 3.0 mi. in the south fork.

SPAWNING DISTRIBUTION:

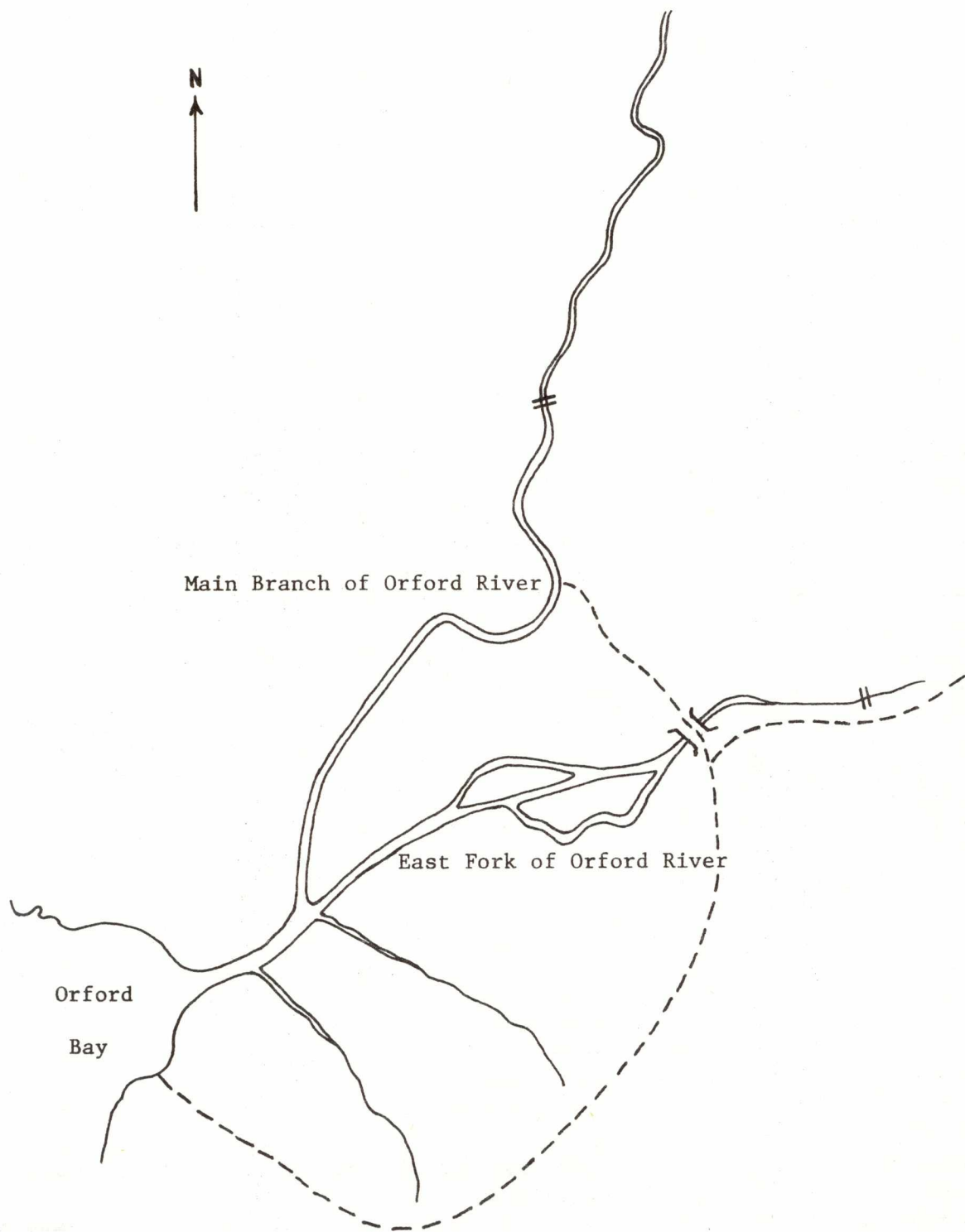
SPECIES	SECTION OF STREAM USED
SOCKEYE	
CHINOOK	<u>lower main river &amp; south fork</u>
COHO	<u>throughout</u>
CHUM	<u>throughout</u>
PINK (ODD YR)	<u>throughout</u>
PINK (EVEN YR)	<u>throughout</u>
STEELHEAD	

POTENTIAL OF INACCESSIBLE PORTION OF STREAM \_\_\_\_\_

GENERAL REMARKS:

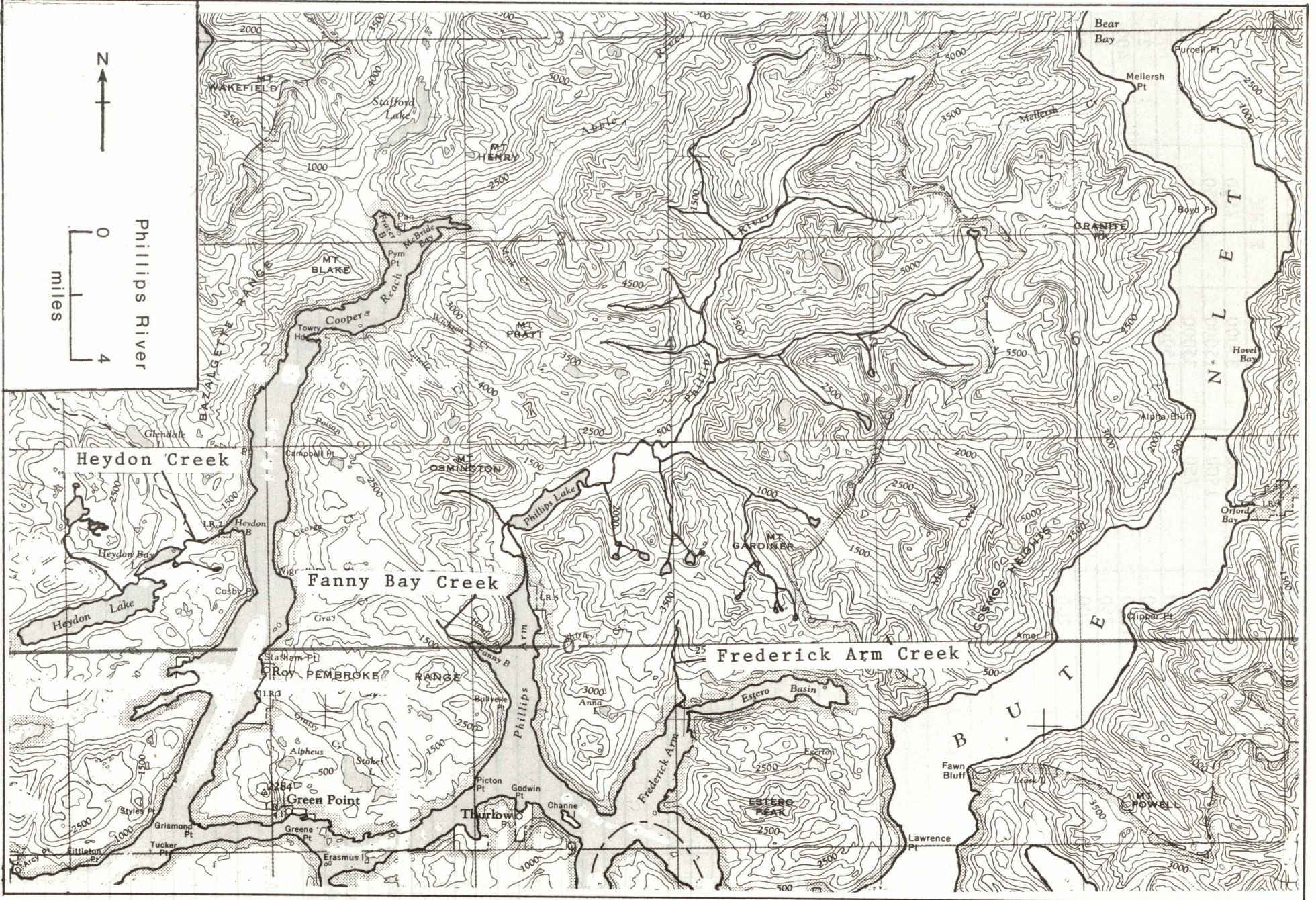
- Freshet conditions in the south fork caused heavy erosion and silting to lower third of river resulting in a heavy egg loss. (1968)
- A new logging camp was established in 1973 and full scale logging operations were underway along the south fork in 1974.
- High water levels on the south fork washed out a logging bridge and egg survival will no doubt be extremely poor. (1975)

Sketch of Orford River, 1970









Phillips River  
0  
4  
miles

Heydon Creek

Fanny Bay Creek

Frederick Arm Creek

ROY PEMBOKE RANGE

Green Point

Thurlow

ESTER PEAR

MT HOWELL

N  
L  
E  
T

B  
U  
T  
E

NAME OF STREAM PHILLIPS RIVER  
 CONSERVATION DISTRICT 5 STATISTICAL AREA 13  
 LOCATION OF MOUTH Flows S.W. and S. into Phillips Arm, E. of Loughborough Inlet,  
Rge. 1 - Coast Dist. POSITION 50 125 N.E.  
 LENGTH            MI. WIDTH            FT. DRAINAGE 180 SQ. MI.  
 COMPOSITION: BEDROCK            BOULDER            COARSE            FINE             
 SILT & SAND            UNCLASSIFIED           

## GRADIENT:

FALL IN FT/000

0.0 - 2.5	
2.5 - 5.0	
5.0 - 7.5	
7.5 - 10.0	
> 10.0	

WETTED AREA            SQ. YD. SPAWNING AREA            SQ. YD.DISCHARGE            CFS MAX            MIN           TEMPERATURE           BARRIERS OR POINTS OF DIFFICULT ASCENT           

## SPAWNING DISTRIBUTION:

SPECIES	SECTION OF STREAM USED
SOCKEYE	above the lake
CHINOOK	throughout
COHO	throughout
CHUM	lower river
PINK (ODD YR)	throughout
PINK (EVEN YR)	
STEELHEAD	

POTENTIAL OF INACCESSIBLE PORTION OF STREAM           

## GENERAL REMARKS:

- A log transportation channel was excavated in 1945 from Phillips Lake to tidewater. In 1965 an extremely high lake level caused a breakthrough at the channel (see sketch). The breakthrough resulted in a new lake outlet, much larger than the original one. In Jan. 1969 the Resources Development Branch completed work to Phillips Lake outlet and the channel. Stream flow through the breakout channel was reduced and flow through the old river channel was stabilized. A dyke was also constructed along this channel to divert a silty tributary from the main pink spawning grounds.
- The stream improvement work in 1969 appears to have alleviated the silting problem. (1970)
- Logging operations are expanding. (1972)

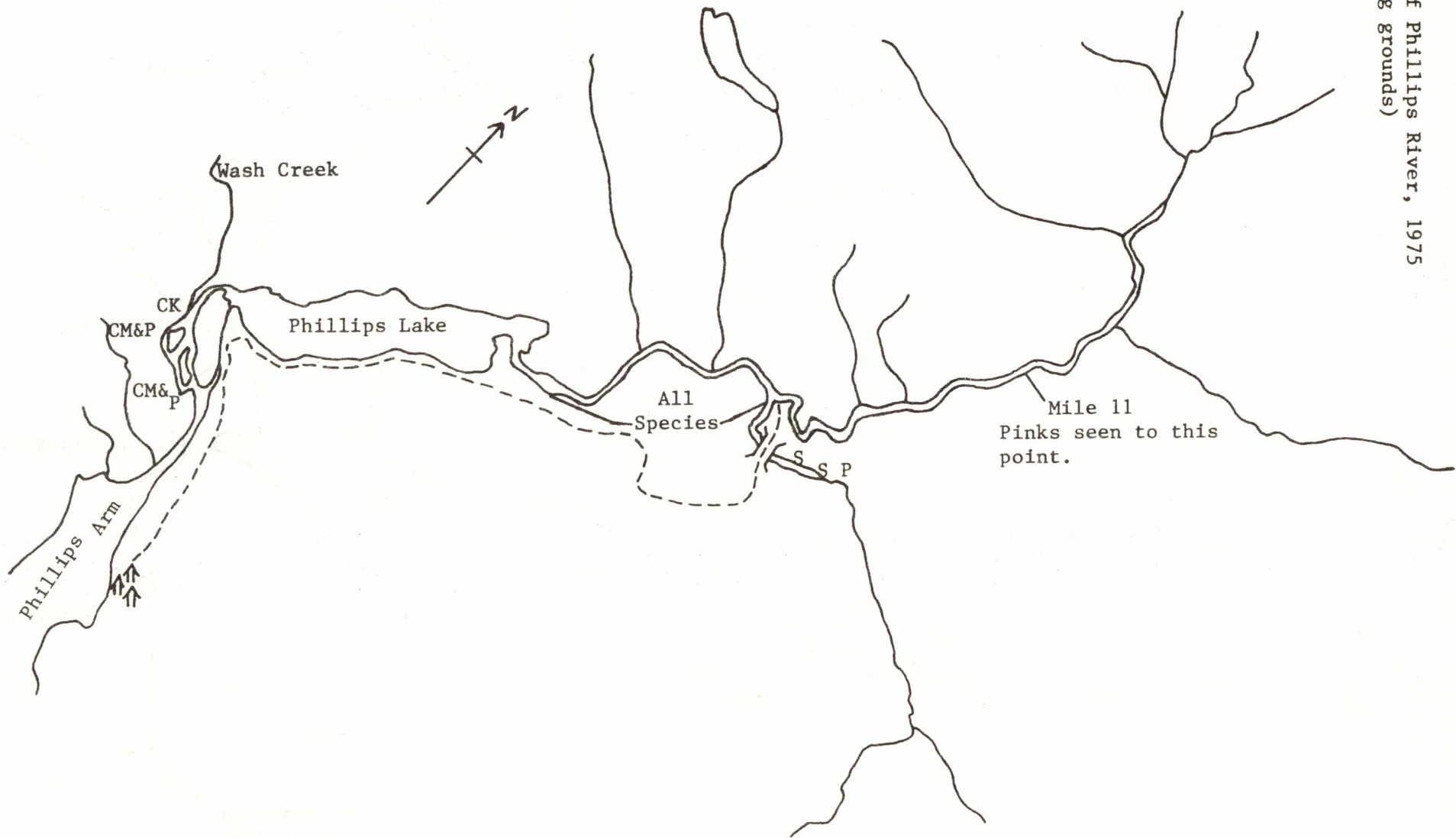
GENERAL REMARKS: (Cont'd)

- Contract loggers are opening access to the upper Phillips River and tributaries. (1974)
- A logging bridge was built across the Clearwater tributary and another span is to cross the upper Phillips River. (1974)
- Pink mortality will be high due to a change in river course. (1975)
- A new logging bridge was lost this fall due to high water. (1975)

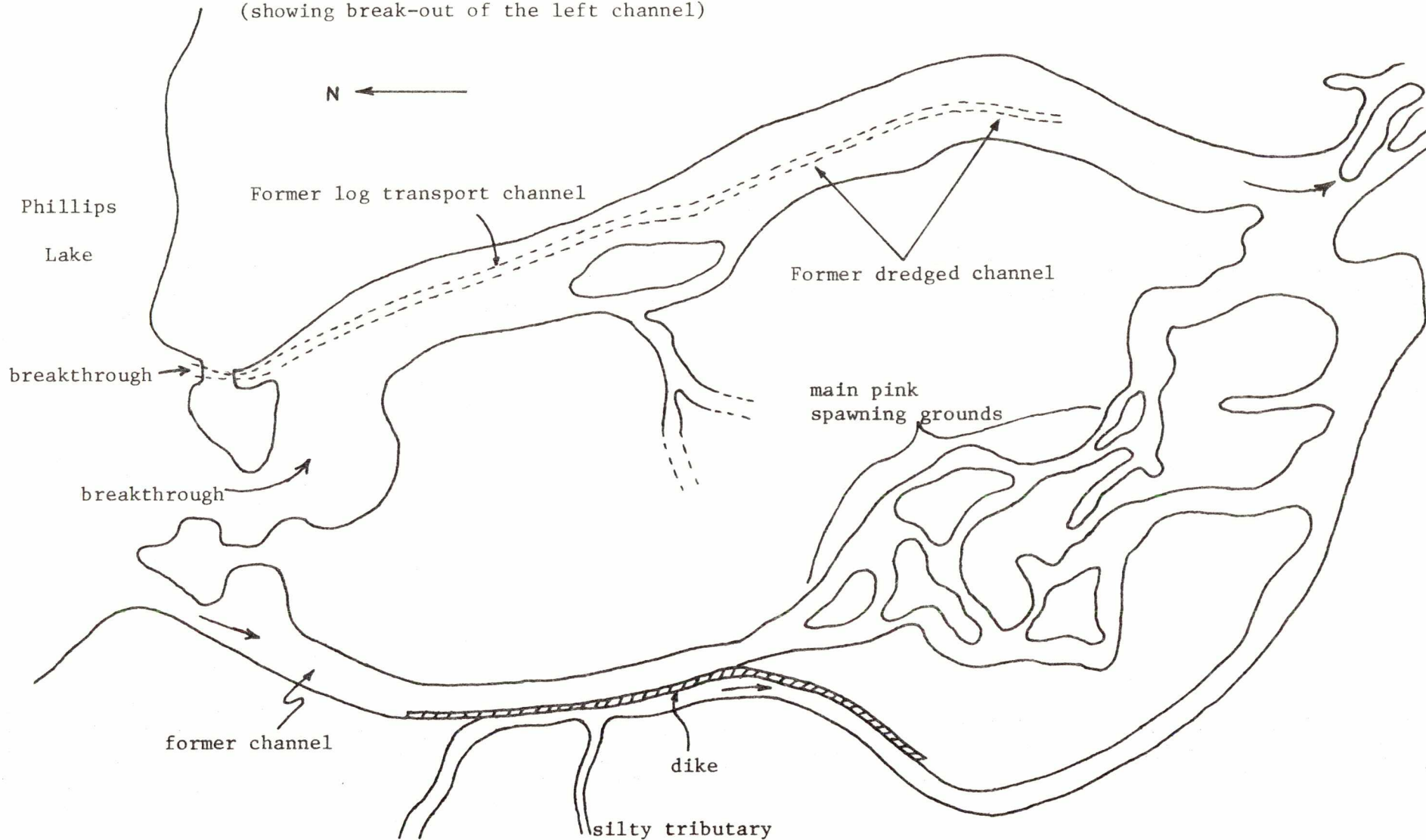
## References:

- Brown, R.F. 1976. Inspection of Erosion Problems on Phillips River. D.O.E., F.M.S., Pac. Reg. Memo. 5900-85-P95 2p & Appendix.
- Colin, R. and A.D. Anderson. 1976. Phillips River Course Change. D.O.E., F.M.S., Pac. Reg. Memo. 5900-85-P95 2p & Appendix.
- McLaren, R.E. and L. Edgeworth. 1965. Diversion of Lower Phillips River. Dept. of Fisheries, Pac. Reg. Memo. 31-3-P10 3p & Appendix.

Sketch of Phillips River, 1975  
(spawning grounds)



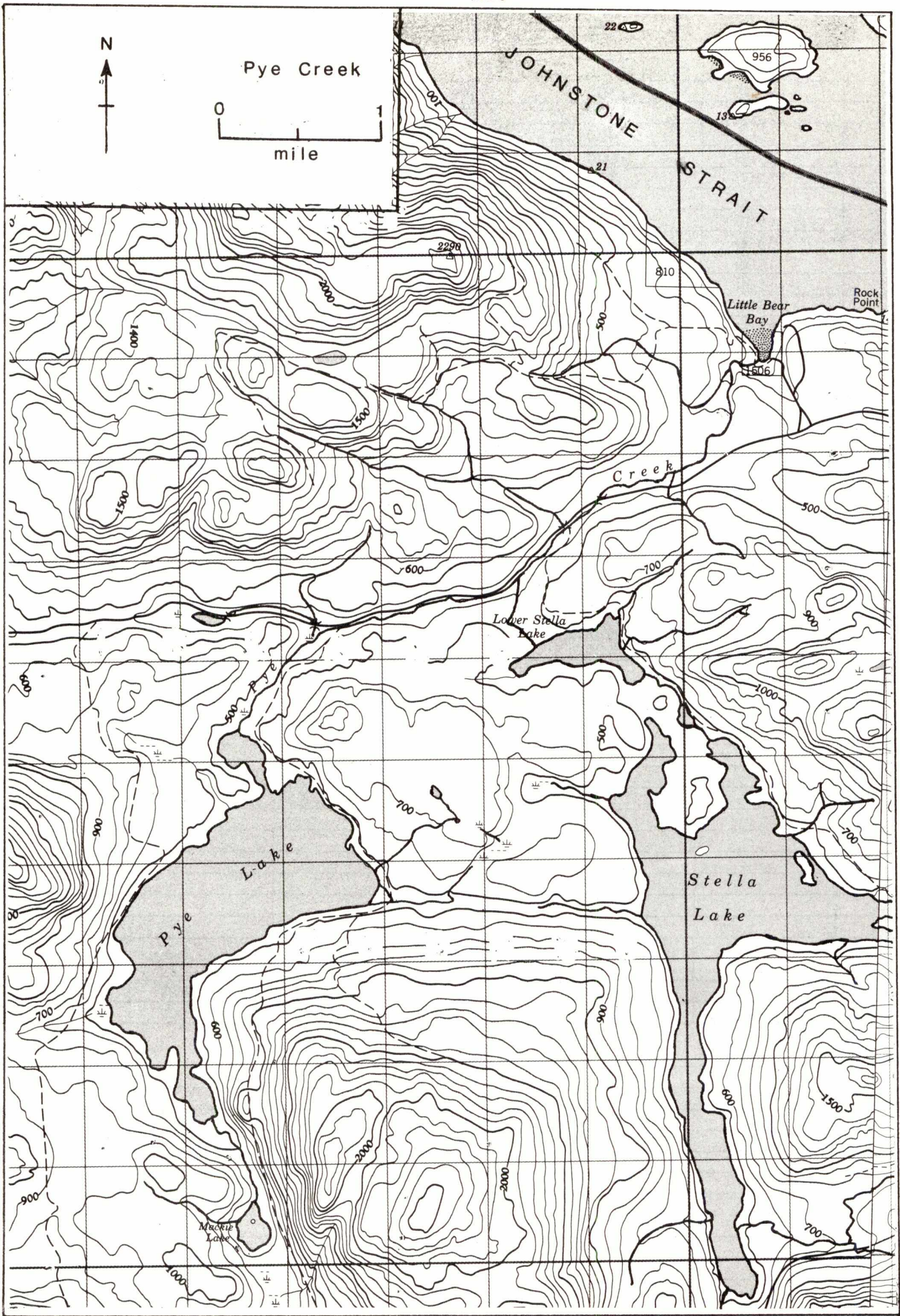
Sketch of Phillips River, 1976  
(showing break-out of the left channel)



## ESCAPEMENT RECORD FOR PHILLIPS RIVER

YEAR	SOCKEYE	CHINOOK	COHO	CHUM	PINK	STEELHEAD
1947	15000	1500	3500	75000	75000	400
48	7500	1500	750	15000	15000	200
49	3500	400	750	15000	7500	200
50	3500	400	1500	7500	3500	200
51	15000	750	750	15000	15000	200
52	3500	400	1500	7500	7500	200
53	400	200	75	3500	3500	75
54	3500	200	200	1500	3500	75
55	1500	400	400	400	75000	75
56	1500	200	400	1500	750	75
57	7500	1500	750	15000	35000	200
58	3500	1500	1500	3500	400	400
59	3500	750	3500	1500	35000	UNK
60	750	400	750	400	200	UNK
61	1500	400	1500	1500	35000	UNK
62	1500	750	3500	400	7500	UNK
63	3500	750	3500	3500	55000	UNK
64	3500	750	3500	7500	35000	UNK
65	3500	750	7500	750	80000	UNK
66	3500	1500	1500	1500	75000	UNK
67	1500	750	1500	1500	20000	UNK
68	3500	750	3500	7500	50000	UNK
69	1500	200	400	1500	3500	UNK
70	1500	750	1500	3500	15000	UNK
71	3500	200	1500	750	35000	UNK
72	4500	400	750	7500	35000	UNK
73	3500	400	750	15000	75000	UNK
74	2500	750	1500	3500	35000	UNK
75	1500	400	750	3500	175000	UNK
76						
77						
78						
79						
80						
81						
82						
83						
84						
85						
Time						
Arr.	JULY	JULY	SEPT	L SEPT	AUG	
Start	JULY	AUG	SEPT	OCT	SEPT	
Peak	AUG	E SEPT	OCT	NOV	SEPT	
End	E SEPT	SEPT	NOV	DEC	OCT	

REMARKS



NAME OF STREAM PYE CREEK

CONSERVATION DISTRICT 5 STATISTICAL AREA 13

LOCATION OF MOUTH Flows N.E. into Little Bear Bay, near E. end of Johnstone Str.

- Sayward Dist. POSITION 50 125 S.W.

LENGTH 0.5 MI. WIDTH \_\_\_\_\_ FT. DRAINAGE \_\_\_\_\_ SQ. MI.

COMPOSITION: BEDROCK \_\_\_\_\_ BOULDER \_\_\_\_\_ COARSE \_\_\_\_\_ FINE \_\_\_\_\_  
SILT & SAND \_\_\_\_\_ UNCLASSIFIED \_\_\_\_\_

GRADIENT:

FALL IN FT/000	
0.0 - 2.5	
2.5 - 5.0	
5.0 - 7.5	
7.5 - 10.0	
> 10.0	

WETTED AREA \_\_\_\_\_ SQ. YD. SPAWNING AREA \_\_\_\_\_ SQ. YD.

DISCHARGE \_\_\_\_\_ CFS MAX \_\_\_\_\_ MIN \_\_\_\_\_

TEMPERATURE \_\_\_\_\_

BARRIERS OR POINTS OF DIFFICULT ASCENT \_\_\_\_\_

- Impassable falls at 0.5 mi.

SPAWNING DISTRIBUTION:

SPECIES	SECTION OF STREAM USED
SOCKEYE	
CHINOOK	
COHO	<u>throughout</u>
CHUM	<u>throughout</u>
PINK (ODD YR)	
PINK (EVEN YR)	
STEELHEAD	

POTENTIAL OF INACCESSIBLE PORTION OF STREAM \_\_\_\_\_

GENERAL REMARKS:

- A minor stream with little potential for expansion.