



OCEANOGRAPHIC CONDITIONS IN THE ATLANTIC ZONE IN 2018

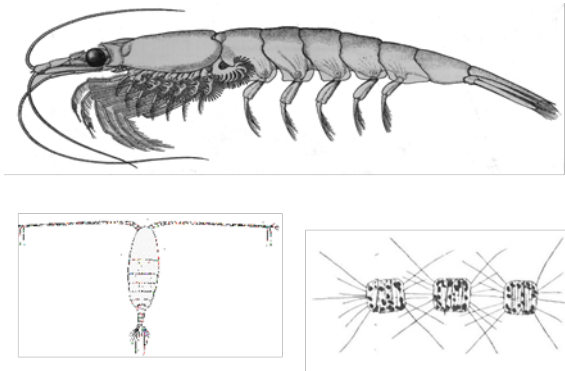


Figure 1. Key taxa of the pelagic food web: euphausiids (top), phytoplankton (bottom right), and copepods (bottom left).
Images: Fisheries and Oceans Canada

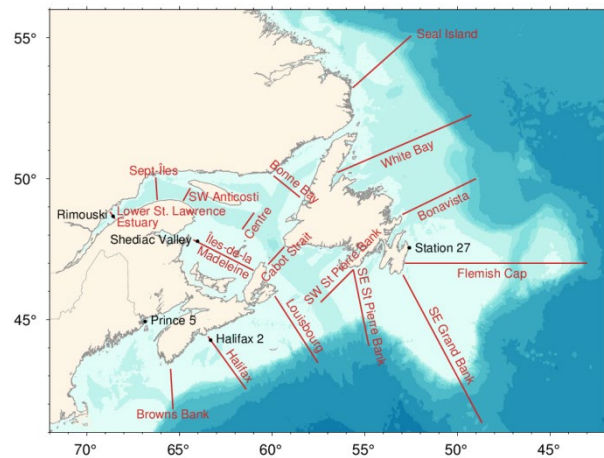


Figure 2. Atlantic Zone Monitoring Program high-frequency sampling stations (black) and selected section lines (red).

Context:

The Atlantic Zone Monitoring Program (AZMP) was implemented in 1998 with the aim of increasing Fisheries and Oceans Canada (DFO's) capacity to understand, describe, and forecast the state of the marine ecosystem and to quantify the changes in the ocean's physical, chemical and biological properties.

A description of the seasonal patterns in the distribution of phytoplankton (microscopic plants) and zooplankton (microscopic animals) in relation to the physical environment provides important information about organisms that form the base of the marine food web. An understanding of the production cycles of plankton, and their interannual variability, is an essential part of an ecosystem approach to stock assessment and marine resource management.

SUMMARY

- Winter sea-surface temperatures were above normal from the Scotian Shelf to the Bay of Fundy, including multiple monthly record highs (since 1985). Temperatures there were also much above normal in August and September, including record highs for both months in the Bay of Fundy and eastern Gulf of Maine. Temperatures were typically below normal throughout the zone in June, November, and December, including multiple monthly record lows.
- Sea-surface temperature averaged over the ice-free months varied from below normal off the eastern coast of Newfoundland and Labrador, to near-normal south of Newfoundland and the Gulf of St. Lawrence, and to above normal off of Nova Scotia.

- Winter average sea-ice volumes were below normal on the Newfoundland and Labrador Shelf and in the Gulf of St. Lawrence.
- Summer cold intermediate layer metrics indicated warmer-than-normal conditions on the Newfoundland and Labrador Shelf and in the Gulf of St. Lawrence; there were no measurements of these metrics on the Scotian Shelf because of limited ship availability.
- Bottom temperatures were normal to above normal across the zone (with sampling gaps on the Scotian Shelf), including a record high in the deeper waters of the northern Gulf of St. Lawrence, where temperatures were at 100+-year record highs. Rimouski station bottom temperature was also at a record high, as was temperature at 200 m in Georges Basin.
- Stratification was below normal at the high-frequency sites Station 27 and Prince 5.
- Deep nitrate inventories were below normal across most of the Atlantic zone in 2018. Record lows occurred across parts of the Newfoundland and Labrador Shelf and at Rimouski Station. The exceptions were the Bonavista Bay section, the northwestern Gulf of St. Lawrence, and Shediac Valley, where inventories were near normal. Nitrate inventories were below normal throughout the Scotian Shelf but were mostly higher in 2018 relative to the record lows observed in 2017.
- Annual chlorophyll a inventories were above normal over most of the Newfoundland and Labrador Shelf, northwestern Gulf of St. Lawrence, and Cabot Strait, but near normal in the remainder of the Atlantic zone with the exception of Prince 5, where a record low was observed.
- The onset of the spring phytoplankton bloom was delayed or near normal on the Newfoundland and Labrador Shelf, early in the Gulf of St. Lawrence, and near normal on the Scotian Shelf. The magnitude of the bloom was generally below normal with the exception of the Gulf of St. Lawrence, where it was mostly above normal. Bloom duration was generally shorter than normal on the Newfoundland and Labrador Shelf, longer than normal on the Grand Banks and in the Gulf of St. Lawrence, and near normal on the Scotian Shelf.
- The zooplankton community shift observed in recent years (2014–2017), characterized by lower abundance of the large energy-rich copepod *Calanus finmarchicus*, higher abundance of small copepods, and higher abundance of non-copepods, started to break down in 2018. *Calanus finmarchicus* remained below normal across most of the Atlantic zone with the exception of the southeast Grand Banks. The abundance of *Pseudocalanus* spp. was above or near normal on the Grand Banks and Gulf of St. Lawrence and normal or below normal on the Scotian Shelf. Non-copepods were above normal on the Newfoundland and Labrador Shelf, reaching record highs on the Flemish Cap and southeast Grand Banks sections, but near normal or slightly above normal in the remainder of the Atlantic zone.
- Zooplankton biomass was below normal across most of the Atlantic zone in 2018, although not as low as in 2017 on the Newfoundland and Labrador Shelf and in the Gulf of St. Lawrence; differences were variable on the Scotian Shelf.
- Near-bottom pH and aragonite saturation are generally much lower in the Gulf of St. Lawrence than on the Grand Banks and Scotian Shelf. Near-bottom aragonite is under-saturated throughout most of the Gulf of St. Lawrence, including the shallow waters of the Southern Gulf. The occurrence of cold water on the Newfoundland and Labrador Shelf is coincident with near under-saturated conditions.

- New record lows of deep dissolved oxygen concentration were measured in 2018 in the Laurentian Channel, from Cabot Strait to the central Gulf of St. Lawrence.
- A continuation of the progressive intensification and deepening (down to 2000 m) of convective mixing and production of Labrador Sea water that started in 2012 was observed in 2018. The upper Labrador Sea (0–2000 m) has been cooling since 2010. The freshening trend that started in 2011 reversed in 2016. This resulted in increasing salinity and progressive densification that led to the densest Labrador Sea water in 24 years.
- The Labrador Current was strong in 2016–2018 relative to previous years, when it was near normal.
- In general, all biological indicators in the Labrador Sea were lower than normal in 2018, coinciding with the return of very deep winter convection that started in 2014. Notable exceptions were the positive anomalies located in the central Labrador Basin for *Calanus* spp., *Pseudocalanus* spp., and hyperiid amphipods while trends on the eastern and western shelves demonstrated declines in the abundance of these taxa.

BACKGROUND

The Atlantic Zonal Monitoring Program (AZMP) was implemented in 1998 (Therriault et al. 1998) with the aim of:

1. Increasing Department of Fisheries and Oceans' (DFO's) capacity to understand, describe, and forecast the state of the marine ecosystem; and
2. Quantifying the changes in ocean physical, chemical, and biological properties.

A critical element in the observation program of AZMP is an annual assessment of the physical oceanographic properties and of the distribution and variability of nutrients, phytoplankton and zooplankton.

A description of the distribution in time and space of nutrients and gases dissolved in seawater (nitrate, silicate, phosphate, oxygen) provides important information on the water-mass movements and on the locations, timing, and magnitude of biological production cycles. A description of the distribution of phytoplankton and zooplankton provides important information on the organisms forming the base of the marine food web (Figure 1). An understanding of the production cycles of plankton is an essential part of an ecosystem approach to stock assessment and fisheries management.

The AZMP derives its information on the state of the marine ecosystem from data collected at a network of sampling locations (high-frequency stations, cross-shelf sections, ecosystem surveys) in each of DFO's administrative regions in Eastern Canada (Quebec, Maritimes, Gulf, Newfoundland and Labrador) sampled at a frequency of weekly to once annually (Figure 2). The sampling design provides for basic information on the natural variability in physical, chemical, and biological properties of the Northwest Atlantic continental shelf. Multispecies trawl surveys and cross-shelf sections provide detailed geographic information, but are limited in their seasonal coverage. Strategically placed high-frequency sampling sites complement the broad scale sampling by providing more detailed information on temporal (seasonal) changes in pelagic ecosystem properties. Since 2015, the annual assessment of the State of the Atlantic Zone has included observations from the Labrador Sea from the Atlantic Zone Off-Shelf Monitoring Program (AZOMP). Since this year, this assessment includes ocean acidification.

Environmental conditions are usually expressed as anomalies, i.e., deviations from their long-term mean. The long-term mean or normal conditions are calculated when possible for the

1981-2010 reference period for physical parameters, and for 1999-2015 for biogeochemical parameters. Furthermore, because these series have different units ($^{\circ}\text{C}$, km^3 , km^2 , etc.), each anomaly time series is normalized by dividing by its standard deviation (SD), which is also calculated using data from the reference period. This allows a more direct comparison of the various series. Missing data are represented by grey cells, values within ± 0.5 SD of the average are designated as near normal and shown as white cells, and conditions corresponding to warmer than normal (higher temperatures, reduced ice volumes, reduced cold-water volumes or areas) as red cells, with more intense reds corresponding to increasingly warmer conditions or greater levels of biogeochemical variables. Similarly, blue represents colder than normal conditions or lower levels of biogeochemical variables. Higher than normal freshwater inflow, salinity or stratification are shown as red, but do not necessarily correspond to warmer-than-normal conditions.

ASSESSMENT

Physical Oceanographic Conditions in the Atlantic Zone in 2018

This is a summary of physical oceanographic conditions during 2018 for eastern Canadian oceanic waters (Figures 2 and 3) as reported annually by the AZMP in three reports (e.g. Colbourne et al. 2017, Galbraith et al. 2018 and Hebert et al. 2018 for conditions of 2016 or 2017).

The North Atlantic Oscillation

The North Atlantic Oscillation (NAO) index is based on the sea-level atmospheric pressure difference between the sub-equatorial high and sub-polar low and quantifies the dominant winter atmospheric forcing over the North Atlantic Ocean. It affects winds, air temperature, precipitation, and the hydrographic properties on the eastern Canadian seaboard either directly or through advection. Strong northwest winds, cold air and sea temperatures, and heavy ice in the Labrador Sea area are usually associated with a high positive NAO index, with opposite effects occurring with a negative NAO index (Colbourne et al. 2017). The winter index used here is the December-February average of the monthly time series from [NOAA](#), again normalized to the 1981-2010 period. In 2018, the winter NAO index was above normal at +1.5 SD, increasing from the 2017 near-normal value, but less than the largest value in the 120 year record (+ 2.0 SD) observed in 2015.

Annual Temperature Cycle

Temperature varies vertically through the seasons in the Atlantic Zone (Figure 4). The summertime temperature (T) structure consists of three distinct layers: the summertime warm surface layer, the cold intermediate layer (CIL), and the deeper water layer. During fall and winter, the surface layer deepens and cools mostly from wind-driven mixing prior to ice formation, but also partly because of cooling, reduced runoff and brine rejection associated with sea ice formation where it occurs. The surface winter layer extends to an average depth of about 50 m on the Scotian Shelf, 75 m in the Gulf of St. Lawrence (GSL) by March, and can extend to the bottom (>150 m) on the Labrador and Newfoundland Shelves. It reaches near-freezing temperatures in the latter two areas. During spring, surface warming, sea-ice melt waters, and continental runoff lead to a lower salinity and higher temperature surface layer, below which cold waters from the previous winter are partly isolated from the atmosphere and form the summer CIL. This layer persists until the next winter, gradually warming and deepening during summer. The CIL is, for the most part, locally formed in winter in separate areas around the zone. For example, the temperature minimum of the winter mixed layer occurs at about the

same time in March both on the Scotian Shelf and in the GSL, reaching different minimum temperatures; an indication of local formation rather than advection from one region to the other. However, transport occurs later in the year from the Labrador Shelf to the GSL and Newfoundland Shelf and from the GSL to the St. Lawrence Estuary and to the Scotian Shelf. The temperature minimum in Southern parts of the Newfoundland Shelf (e.g. at Station 27) can occur well after winter; for example, in 2016 it was observed in early August (Colbourne et al. 2017). Deep waters are defined here as those below the CIL that have only weak seasonal cycles.

Sea Surface Temperature

Averaged over ice-free periods of the year as short as June to November on the Labrador Shelf to the entire year on the Scotian Shelf, sea surface temperature has been found to be well correlated with average air temperature. Therefore, the warming trend observed in air temperature since the 1870s of about 1°C per century is also expected to have occurred in surface water temperatures across Atlantic Canada. The Scotian Shelf, St. Pierre Bank and the Grand Bank out to the Southeast Shoal all had their warmest ice-free period of the satellite record (since 1985 in the dataset shown here) in 2012 and the St. Lawrence Estuary had its warmest ice-free period in 2016.

In 2018, winter sea surface temperatures were above normal from the Scotian Shelf to the Bay of Fundy, including multiple monthly record highs (since 1985). Temperatures there were also much above normal in August and September, including record highs for both months in the Bay of Fundy and eastern Gulf of Maine (Figures 5 to 7). Temperatures were typically below normal throughout the zone in June, November and December, including multiple monthly record lows. Sea-surface temperature averaged over the ice-free months varied from below-normal off the eastern coast of Newfoundland and Labrador, to near-normal south of Newfoundland and the Gulf of St. Lawrence, to above normal off of Nova Scotia.

Cold Intermediate Layer

For the Newfoundland and Labrador Shelf, the CIL indices shown here (Figure 8) are the cross sectional areas of waters with $T < 0^{\circ}\text{C}$ during summer along the Seal Island, White Bay, Bonavista and Flemish Cap AZMP sections. For the Gulf, the CIL volume with $T < 1^{\circ}\text{C}$ observed in August-September is used as well as an index defined as the mean of the CIL minimum core temperatures observed between 1 May and 30 September of each year, adjusted to 15 July with a region-dependant warming rate (Galbraith et al. 2018). Since the CIL reaches to the bottom on the Magdalen Shallows in the Southern Gulf, the area of the bottom occupied by waters colder than 1°C during the September survey is also used as a CIL index specific to that area (Galbraith et al. 2018). On the Scotian Shelf, the volume of water having $T < 4^{\circ}\text{C}$ in July is used (Limited data prior to 1990 is compensated for by the use of a 5 year running mean to achieve extended temporal coverage; however, this results in a loss of high-frequency variability from that part of the time series) (Hebert et al. 2018). The CIL indices reported here are taken at about the same time within their respective annual cycles, although not simultaneously.

The 2012-16 period was characterized by record lows in 2012 for both the Gulf of St. Lawrence and Scotian Shelf CIL volumes, representing record warm conditions. While conditions were warmer than normal in the Newfoundland and Labrador sections in 2013, they were followed by mostly near normal conditions from 2014-17. In 2018, CIL conditions have been generally warmer than normal in the Gulf and on the Newfoundland and Labrador Shelf, varying from 0.6 SD above normal at the Bonavista section to +1.9 SD at the Seal Island section. There were no measurements of the usually reported CIL metrics on the Scotian Shelf because of limited ship availability.

Sea Ice

Because the CIL and sea-ice cover are both formed in winter, it is not surprising that indices for both are well correlated with each other and with winter air temperature. On the Newfoundland and Labrador shelf, seasonal average sea-ice volume is correlated with the CIL area along the Bonavista section (1981-2018, $R^2 = 0.56$) and with December-March air temperature at Cartwright (1981-2017, $R^2 = 0.62$). In the Gulf of St. Lawrence, the correlation between the December-March air temperature averaged over multiple meteorological stations and the annual maximum ice volume reaches $R^2 = 0.72$ (1969-2018). Air temperature is similarly well correlated to sea-ice cover area and duration ($R^2 = 0.77-0.78$). Sensitivity of the Gulf of St. Lawrence ice cover to climate change can be therefore estimated using past patterns of change in winter air temperature and sea-ice features, which indicate losses of 17 km³, 31,000 km² and 14 days of sea-ice season for each 1°C increase in winter air temperature (Galbraith et al. 2018).

For the past decade, ice volumes on the Newfoundland and Labrador (NL) Shelf, the Gulf of St. Lawrence and the Scotian Shelf have generally been lower than normal reaching a record-low value in the Gulf of St. Lawrence in 2010 and on the NL Shelf in 2011 (Figure 8). In the 9-year period between 2010 and 2018, the Gulf average sea-ice volume had 6 of the 9 lowest values of the series, and the Newfoundland and Labrador shelf had 3 of the 9 lowest. In 2018, seasonally averaged sea ice volume was below normal on the NL Shelf (-0.7 SD) and was 11th lowest since records began in 1969 in the Gulf of St. Lawrence, with very little sea-ice exported onto the Scotian Shelf.

Bottom and Deep Water Temperatures

Interdecadal changes in temperature, salinity, and dissolved oxygen of the deep waters of the GSL, Scotian Shelf, and Gulf of Maine are related to the varying proportion of their source waters: cold–fresh/high-dissolved-oxygen Labrador Current water and warm–salty/low-dissolved oxygen Warm Slope Water. The >150 m water layer of the GSL below the CIL originates from an inflow at the entrance of the Laurentian Channel which circulates towards the heads of the Laurentian, Anticosti, and Esquiman Channels in up to roughly three to four years, with limited exchange with shallower upper layers. Deeper portions of the Scotian Shelf and Gulf of Maine are similarly connected to the slope through deep channels that cut into the shelves from the shelf break. Variations in the westward transport of Labrador Slope Water from the Newfoundland region along the shelf break have been shown to have a strong effect on water masses of the Scotian Shelf deep basins, with increased transport through Flemish Pass associated with below normal deep temperatures and salinities on the Scotian Shelf and in the Gulf of Maine. Deep basins such as Emerald Basin undergo very large interannual and interdecadal variability of the bottom water temperature associated with deep renewal events. More regular changes associated with circulation are observed in bottom water temperature over the central and eastern Scotian Shelf (NAFO regions 4W and 4Vs respectively). Bathymetry in these areas is fairly evenly distributed between 30 m and 170 m, with 4Vs including some 400-450 m depths from the Laurentian Channel. Both these areas are therefore affected somewhat by CIL waters as well as the waters underneath.

In 2018, bottom temperatures in the Atlantic Zone ranged from normal to above normal when associated with cold intermediate depths such as on the NL shelf and Magdalen Shallows, and were above normal for deeper waters, including a new 100+ year high-temperature record for the Gulf at 250 and 300 m (Figure 8). This began as a warm anomaly first observed in Cabot Strait in 2010 that has propagated towards the heads of the channels, sustained by new warm water inflows detected in 2012 and 2014-16. Thus, the average temperature of the deep waters

of the Gulf should continue to increase in the next year as estuarine circulation drives these anomalies inwards. The bottom area covered with temperatures $> 6^{\circ}\text{C}$ reached a series record in 2017 in both Central Gulf and the northwest Gulf since at least the mid-1980s, and has remained stable in 2018. A series record was reached in 2018 in the northwest Gulf. In other areas of the zone, bottom temperature remained high in 4X (8.6°C , $+2.0$ SD) in July, with record high temperature in Georges Basin (10.2°C , $+2.0^{\circ}\text{C}$, $+3.7$ SD). There were no measurements of the usually reported bottom temperature metrics for other portions of the Scotian Shelf because of limited ship availability.

Runoff and Stratification

Freshwater runoff in the Gulf of St. Lawrence, particularly within the St. Lawrence Estuary, strongly influences the circulation, salinity, and stratification (and hence upper-layer temperatures) in the Gulf and, via the Nova Scotia Current, on the Scotian Shelf. The inter-annual variability of the seasonal (May-October) stratification (0-50 m) at Rimouski Station in the Estuary is strongly correlated with the seasonally average runoff of the St. Lawrence river (1991-2018; $R^2 = 0.71$, Figure 9). After the highest annual mean runoff since 1974 in 2017 ($19\ 200\ \text{m}^3\text{s}^{-1}$, $+2.1$ SD; Figure 8), the 2018 runoff was above average ($17\ 900\ \text{m}^3\text{s}^{-1}$, $+0.9$ SD), with the spring freshet beginning early in March.

Stratification on the Scotian Shelf decreased in 2018 to near-normal levels as a result of colder, saltier near-surface waters. Since 1948, there has been an increase in the mean stratification on the Scotian Shelf, resulting in a change in the 0-50 m density difference of $0.35\ \text{kg}\ \text{m}^{-3}$ over 50 years (Figure 9). This change in mean stratification is due mainly to a decrease in the surface density, composed of equally of warming and freshening. The average St. Lawrence River runoff for March-May, representing the bulk of the spring freshet, was above average ($+1.4$ SD), yet stratification was near normal at Rimouski station (Figure 9).

Conditions at AZMP High Frequency Sampling Stations

The seasonal average 0-50 m temperature has been normal or above normal at all stations since 2010, except at Shediac Valley in 2017 and Rimouski Station in 2018 where it was below normal (Figure 10). At Rimouski station, the last 4 year period 2015-18 had the 4 warmest bottom temperature averages of the time series, reaching a record high in 2018. A notable highlight in 2018 in the record low salinity at Station 27 (freshest anomaly since 1948; not shown), averaged over the entire water column (0-176 m) and entire year.

Labrador Current Transport Index

The annual-mean Labrador Current transport index shows that the Labrador Current transport over the Labrador and northeastern Newfoundland Slope is generally out of phase with that over the Scotian Slope (Figure 8). The transport was strongest in the early 1990s and weakest in the mid-2000s over the Labrador and northeastern Newfoundland Slope, and opposite over the Scotian Slope. The Labrador Current transport index was positively and negatively correlated with the winter NAO index over the Labrador and northeastern Newfoundland Slope and over the Scotian Slope, respectively. In 2018, the annual mean transport was above normal over the Labrador and northeastern Newfoundland Slope ($+1.7$ SD) and below normal (-1.3 SD) over the Scotian Slope.

Summary

Surface oceanic waters of the Atlantic zone during ice-free months have been mostly tracking the climate-change driven warming trends observed in the atmosphere. Warming winters have also led to less sea-ice cover and weaker cold intermediate layers. The 2010-18 period was characterized by record lows in 2012 for both the Gulf of St. Lawrence and Scotian Shelf CIL

volumes, representing record warm conditions. For the past decade, ice volumes on the Newfoundland and Labrador Shelf, the Gulf of St. Lawrence and the Scotian Shelf have generally been lower than normal reaching a record-low value in the Gulf of St. Lawrence in 2010 and on the NL Shelf in 2011.

The deep water temperatures on the Scotian Shelf and Gulf of St. Lawrence are greatly influenced by an increasing proportion of Gulf Stream Water relative to Labrador Water. While the Newfoundland Shelf and Labrador Shelf were characterized by above normal bottom temperatures in the early period of 2010-18 with some near normal temperatures in the later half, all anomalies were above normal on the Scotian Shelf and the northern Gulf of St. Lawrence during this time period. Series records were recorded during this period in central (4W) and western (4X) Scotian Shelf, a 33-year record in 3Ps as well as a 100-year record in the northern Gulf of St. Lawrence.

Figure 11 shows three annual composite index time series constructed as the sum of anomalies shown earlier, representing the state of different components of the system, with each time series contribution shown as stacked bars. The components describe sea-surface and bottom temperatures, as well as the cold intermediate layer and sea-ice volume, which are both formed in winter. These composite indices measure the overall state of the climate system with positive values representing warm conditions and negative representing cold conditions (e.g. less sea-ice and CIL areas and volumes are translated to positive anomalies). The plots also give a sense of the degree of coherence between the various metrics of the environmental conditions and different regions across the zone. Conditions in 2018 were near normal for surface temperatures (averaging a gradient of colder-than-normal on the Newfoundland-and-Labrador Shelf to above-normal on the Scotian Shelf), and above normal for Cold Intermediate Layer and sea-ice anomalies as well as for bottom temperatures. A total of 42 indices listed in Figures 8 and 11 describe ocean conditions related to temperature within the AZMP area in 2018 (SST; ice; summer CIL areas, volumes, and minimum temperature; bottom temperature; 0–50 m average temperature). Of these, 4 were colder than normal, 12 were within normal values and 26 were above normal, indicating a continuation but weakening of warmer than normal oceanographic conditions in 2018 across much of the Atlantic Zone.

Biogeochemical Environment

Lower trophic levels are the components of marine food webs that channel the sun's energy to upper trophic level animals such as shellfish (e.g., crabs, lobsters, scallops, and mussels), finfish (e.g., cod, herring, and halibut), marine mammals (e.g., seals and whales) and seabirds. Lower trophic level organisms include phytoplankton and zooplankton. Phytoplankton are microscopic plants that form the base of the aquatic food web and occupy a position in the marine food web similar to that of plants on land. Zooplankton are a broad variety of small animals ranging from 0.2 to 20 mm in length that drift with ocean currents. There is a wide variation in the size of phytoplankton, from the large diatoms to the smaller flagellates, each taxon fulfilling a different ecological function. Phytoplankton are the primary food source for zooplankton, which are the critical link between phytoplankton and larger organisms. There are many types of animals in the zooplankton community, such as copepods, gelatinous filter feeders and predators, and ephemeral larval stages of bottom-dwelling invertebrates. As with phytoplankton, there is a broad range of sizes of zooplankton. Smaller stages and species are the principal prey of young stages of fish and larger copepods are eaten predominantly by juvenile and adult fishes that forage near the surface.

Productivity of marine ecosystems depends on photosynthesis, the synthesis of organic matter from carbon dioxide and dissolved nutrients by phytoplankton. Light provides the energy

necessary for the transformation of inorganic elements into organic matter. The growth rate of phytoplankton is dependent on the availability of light and nutrients in the form of nitrogen (nitrates, nitrites, and ammonium), phosphorous (phosphate), and silica (silicate), with the latter being essential for production of diatoms. During springtime, phytoplankton undergoes an explosion in abundance known as the spring bloom. The spring bloom occurs principally in near-surface waters. In fall, a secondary bloom, less intense than the spring bloom, also contributes to the functioning of the marine ecosystem. We report on the amount of nutrients available for phytoplankton, the overall abundance of phytoplankton and important features of the spring bloom, and the abundance of zooplankton species based on the data available from 1999 to the present.

Indices indicative of nitrate inventories, phytoplankton standing stock, features of the spring phytoplankton bloom derived from satellite observations, and zooplankton abundance from the Newfoundland Shelf (NL) (Pepin et al. 2017), Gulf of St. Lawrence (GSL) (Blais et al. 2018) and Scotian Shelf (SS) (Johnson et al. 2018) are summarized as time series (1999–2017) of annual values in matrix form in Figures 12-15. Anomalies for biogeochemical parameters were calculated from climatologies using a 1999-2015 reference period.

Although the relatively short time series of biogeochemical variables from the program tend to highlight the high degree of interannual variability in the information rather than the long-term trends that are apparent for the physical environment, there has been a distinct shift across several variables in recent years. There is a degree of synchrony in the patterns of variation of individual biogeochemical variables at adjacent locations, and the sign of anomalies tends to persist for several years, although in some instances there may be considerable variability among locations within a region.

Nutrients

In continental shelf waters, nitrate, the dominant form of nitrogen, is usually the limiting nutrient for phytoplankton growth. The amount of nitrate contained in waters below the surface mixed layer at depths of 50–150 m is called the “deep water nitrate inventory”. Generally, this inventory is not greatly influenced by the growth of phytoplankton, so it provides a good indicator of resources that can be mixed into the water column during winter or summer and fall through upwelling to become available for phytoplankton growth. Nitrate inventories, and the relative abundances of other nutrients, are mostly dependent on the source waters that make up the deep water on continental shelves, which can vary from year to year. Deep nutrient inventories (50-150 m) were below normal throughout most of the Atlantic zone in 2018 (Figure 12). Large reductions in inventories were observed throughout the Newfoundland and Labrador Shelf with levels reaching 2 SD below normal. Conditions were generally below normal in the Gulf of St. Lawrence with reductions up to 2 SD at Rimouski station. Inventories across the Scotian Shelf were below normal but to a lesser extent than the record low values observed in 2017. The zonal deep nitrate index was the lowest observed in the time series.

Phytoplankton

Chlorophyll inventories in the upper ocean (between 0-100 m) represent phytoplankton biomass. It demonstrated a high degree of year-to-year variability including exceptional values either above or below the long-term average (Figure 12). Part of this variation is due to the sampling program which is relatively fixed in time throughout the zone while the production cycle may vary annually depending on environmental conditions. Annual chlorophyll *a* inventories in 2018 were mostly above normal on the Newfoundland and Labrador Shelf and in the Gulf of St. Lawrence in contrast to near normal and negative anomalies throughout the Scotian Shelf. Exceptional biomass levels were observed in the northwest Gulf with inventories

3 SD above normal in 2018. Because of the reliance of phytoplankton on nutrient availability, coupled with increasing length of the respective time series, the variation in nutrient inventories appears to be associated with general trends in phytoplankton biomass at regional scales. Although nutrient inventories provide some threshold to limit seasonal production dynamics across the zone, additional factors are likely to be influencing local nutrient-phytoplankton dynamics and the balance of these factors is likely to differ when considered at the very large spatial scale from the Gulf of Maine to southern Labrador, which includes estuarine to oceanic environments.

The magnitude of the spring bloom is partly dependent on the amount of nutrients that are mixed into surface waters over the course of the winter. The characteristics of the bloom (amplitude, magnitude, timing, and duration) provide important information about regional variations in ecosystem productivity and are linked to the productivity of organisms that depend on lower trophic levels. Characteristics of the spring phytoplankton bloom (i.e., time of onset, integrated magnitude and duration) were derived from weekly composite observations of the concentration of chlorophyll, a commonly used index of phytoplankton biomass, at the ocean surface based on satellite observations (Sea-Viewing Wide Field-of-View Sensor [SeaWiFS] 1998-2007; Moderate Resolution Imaging Spectroradiometer [MODIS] 2008-11); Visual Infrared Imaging Radiometer Suite [VIIRS] (2012-present) (Figure 13). The onset of the spring phytoplankton bloom was mostly delayed on the Newfoundland and Labrador Shelf, earlier than normal in the Gulf of St. Lawrence, and normal on the Scotian Shelf. The magnitude of the bloom was generally below normal, except in the Cabot Strait. Bloom durations were mostly shorter than normal on the Newfoundland Shelf, longer than normal in the Gulf of St. Lawrence, with the exception of the northeast GSL, and near-normal across the Scotian Shelf.

Zooplankton

Zooplankton community structure is strongly influenced by depth, temperature, and season, and the complexity of the community differs substantially among the three bioregions of the Northwest Atlantic. Despite its complexity and diversity in different parts of the zone, four indices of abundance provide good indicators of the state of the zooplankton community. Zooplankton abundance indices demonstrate a high degree of large spatial scale coherence in their signal across different parts of the Atlantic zone. Two copepod taxa serve to represent different broad groups with similar life histories: *Calanus finmarchicus* and *Pseudocalanus* spp. *Calanus finmarchicus* is a large, ubiquitous copepod that develops large energy reserves in later developmental stages and is therefore a rich source of food for pelagic fish and a dominant species by biomass throughout much of the region. *Pseudocalanus* spp. are small copepods that are widespread throughout the Atlantic region that have much smaller energy reserves relative to *C. finmarchicus* but their life history features are generally representative of smaller taxa in the copepod community. The other indices provide information on the total abundance of copepods and non-copepod taxa, and the biomass (dry weight) of the zooplankton in the 0.2-10 mm size fraction usually dominated by copepods.

The zooplankton community shift observed in recent years, characterized by lower abundance of the large energy-rich copepod *Calanus finmarchicus*, higher abundance of small and warm water copepods, and higher abundance of non-copepods, persisted in 2018, although its intensity declined in comparison to 2014-2017 (Figure 14). The abundance of *C. finmarchicus* remained lower than average overall, with only one record low abundance observed on the Bonavista section. However, near normal or higher than normal abundances were also observed at Station 27 and on the Flemish Cap and Southeast Grand Banks sections. In 2018, the abundance of *Pseudocalanus* spp. was above or near normal on the Grand Banks and in the Gulf of St. Lawrence, including record highs on the Southeast Grand Banks section and at

Shediac Valley, and below or near normal on the Scotian Shelf. Total copepod abundances were mostly above or near normal across the Newfoundland Shelf and in the Gulf of St. Lawrence, with a record high abundance on the Flemish Cap section, but below or near normal on the Scotian Shelf, with a record low abundance on the Halifax section. Non-copepods, which are mostly larval stages of benthic invertebrates, carnivorous groups that feed on other zooplankton, and small-particle feeders, were mainly above normal, with record high values on the Flemish Cap and Southeast Grand Banks section.

Zooplankton biomass was below normal across most of the Atlantic zone in 2018, a pattern observed since 2015. On the Newfoundland Shelf and in the Gulf of St. Lawrence, biomass anomalies were mostly not as low as in 2017, when record low values were observed, while on the Scotian Shelf changes in biomass from the previous year were more variable (Figure 15). Overall, recent changes in zooplankton community structure continue to indicate that important shifts in the flow of energy among lower trophic levels of the marine ecosystem in Atlantic Canadian waters are taking place, but the consequences to higher trophic levels will require further investigation.

Ocean Acidification

For the first time, ocean acidification (OA) parameters are reported. These have been monitored as part of the AZMP since fall 2014. In addition to pH, the carbonate saturation states with respect to calcite and aragonite (Ω_{cal} and Ω_{arg}) are measures of ocean acidification that indicate the potential to precipitate/dissolve carbonate. Below the threshold of 1, the environment is considered undersaturated and potentially corrosive to organisms that build biogenic carbonate shells. The carbonate saturation state typically decreases with depth. Thus, deep slope waters tend to have lower Ω than does the bottom waters of the shallower shelf waters. Seasonal sampling of the carbonate system suggests that Ω_{arg} , which is the most soluble form of carbonate, is lowest in the fall after a productive season, when temperature is highest and organic matter has accumulated in the deep layers. Conditions in fall 2018 (see Figure 16 for Ω_{arg} (top) and pH (center)) were close to the 2014-2017 average. For the shelf, bottom pH values ranged from 7.57 to 8.10, Ω_{arg} from 0.55 to 1.79, and Ω_{cal} from 0.88 to 2.80. For the deeper slope stations, pH varied between 7.90 to 8.02, Ω_{arg} from 0.71 to 1.43, and Ω_{cal} from 1.08 to 2.25. Lowest pH and Ω were observed in the Gulf of St. Lawrence, specifically in the Lower St. Lawrence Estuary where most of the deep layer was undersaturated with respect to aragonite and calcite (the latter is not shown), but also in the shallower southern Gulf. Low aragonite saturation states were also found in the deep waters of the eastern Scotian Shelf which is under the influence of the Gulf outflow. Surface pH and Ω_{arg} (also not shown) are generally lower in the Gulf and Newfoundland and Labrador Shelf compared to the Scotian Shelf. The occurrence of cold water on the bottom of the Newfoundland and Labrador shelf results in near undersaturated conditions.

During fall 2015, bottom waters of the Newfoundland and Labrador Shelf and Slope were undersaturated ($\Omega_{\text{arg}} < 1$), representing minimum Ω_{arg} values compared with the other years of the time series. In the Labrador Sea, conditions in 2015 appears to have been exceptionally cold in terms of sea surface temperature and air temperature, and productive in terms of primary production, what likely increased both solubility of CO_2 and respiration, and lead to these important drops of pH and Ω_{arg} .

Oxygen saturation (Figure 16, bottom panel) and pH are tightly coupled through temperature and respiration. Not surprisingly, hypoxic conditions (dissolved oxygen saturation levels < 30%) are observed in bottom waters of the St. Lawrence Estuary and northwestern Gulf, and new

record lows were measured at 300 m in 2018 in the Laurentian Chanel, from Cabot Strait to central Gulf.

Labrador Sea Environment

The Atlantic Zone Off-Shelf Monitoring Program (AZOMP) provides observations of variability in the ocean climate and plankton affecting the regional climate and ecosystems off Atlantic Canada as well as the global climate system. In May of 2018, the Atlantic Repeat 7-West (AR7W) line was occupied by the Bedford Institute of Oceanography for the 31st time since 1990. Additionally, the network of profiling Argo floats provided temperature and salinity data to 2000 m used for monitoring of year-round variability of the oceanographic conditions in the Labrador Sea. However, the number of the floats within the Labrador Sea during 2018 were just marginally sufficient to resolve sub-monthly variability.

The extreme losses of the oceanic heat to the atmosphere occurring in the Labrador Sea in winter of most years result in the formation of relatively dense water masses spreading through and consequently ventilating the intermediate and deep layers in the North Atlantic Ocean. Recurrent production of dense waters also makes the Labrador Sea a principal co-driver of the global ocean overturning circulation.

In the winter of 2017-18, as in the previous two winters, the mid-high latitude North Atlantic experienced a more moderate heat loss to the atmosphere than in the winter of 2014-15 (which had the highest surface heat loss in more than two decades). The cumulative surface heat losses in the Labrador Sea were also the lowest since the winter of 2013-14. Despite of the reduction in winter heat losses, the depth of winter convection has been steadily increasing since 2014-15, forming the most significant class of Labrador Sea Water (LSW) since 1994, in terms of volume, depth and density. Such persistency in LSW development, seen as the deep cold water cascading in Figure 17, owes to the water column preconditioning maintained over the previous years. The temperature and salinity profiles obtained by the Argo floats show that the winter mixed layer and hence convection in the central Labrador Sea reached and even exceeded 2000 m in 2018, continuing the tendency of winter mixed layer deepening going on for a seventh year (Figure 17). This suggests that certain properties, such as low temperature, weak vertical stability and weak overall stratification, imposed on the water column by the stronger-than-usual convective mixing in the previous years, had resulted in a kind of preconditioning that facilitated further development of deep convection this year. A reservoir filled with this newly ventilated, record deep, cold and fairly fresh LSW is evident in Figure 17. The 2018 vintage of LSW is associated with low temperature ($< 3.3^{\circ}\text{C}$) and salinity (< 34.86) between 1000 and 2000 m. The winter convection in the recent time period, 2015-2018, especially in 2017-18, is arguably the deepest since the record-deep cooling that reached 2400 m in 1994. The present LSW year class is one of the largest ever observed outside of the early-1990s.

The progressive cooling of the top 2000 m, and deep and intense winter mixing during the five consecutive winters of 2013-14 through 2017-18 have interrupted the general warming and stratification-building trend that has persisted in the intermediate waters of the Labrador Sea since the mid-1990s (Figure 18).

Interannual variability in Labrador Sea ocean heat content and cumulative surface heat loss during the cooling seasons indicates that anomalously strong winter atmospheric cooling associated with the North Atlantic Oscillation is continuing to drive the recurrent convection (Figure 18). In turn, recurrent deep convection is contributing to decadal-scale variability in deep-water properties and transport across and from the subpolar North Atlantic (by the ocean's

western boundary and interior pathways) and potentially in the Atlantic Meridional Overturning Circulation.

Both upper, 0-200 m, and deeper, 200-2000 m, layers have been cooling since 2010. However, the freshening trend seen in the newly-formed or newly-ventilated LSW between 2011 and 2016, reversed in 2016, making the LSW formed in the winter of 2017-18 the densest since the mid-1990s.

The strong winter convection in the winter of 2017-18 further added to increased gas (dissolved oxygen, anthropogenic gases, and carbon dioxide) uptakes and consequently increased gas concentrations in the Labrador Sea in the lower part of the 0-2000 m layer (not shown).

At the exception of the Greenland shelf, it was again a challenging year to derive phytoplankton metrics using satellite ocean color because of the heavy cloud cover over the entire Labrador Sea in Spring. More than half of the weekly composite images of the Labrador shelf/slope box had less than 10% of coverage between February and July 2018. Difficulties in accurately estimating the beginning of the bloom period impairs the quality of the duration and magnitude estimates of the bloom.

Measured chlorophyll *a* in May were lower than average on the Labrador Shelf/slope and in the Labrador Basin and were higher than average on the Greenland shelf/slope (Fig. 19). The occurrence of a fall bloom in 2018 indicates that this feature is becoming more the norm than the exception. Abundance estimate of large centric diatoms and foraminifera from the 200µm plankton net were both lower than average, although this time-series was only initiated 10 years ago.

In general, all mesozooplankton indicators were again lower than normal in 2018, a trend that coincides with the return of very deep winter convection that start in 2014. *Calanus finmarchicus* show regional year-to-year variations in abundance that are generally related to regional differences in the timing of the life-cycle events and environmental conditions. *Calanus finmarchicus* dominates the mesozooplankton throughout the Labrador Sea, but also shows below averages abundances on the Labrador and Greenland shelves/slopes, The central basin stations were an exception with a higher than average abundance of the three large Calanidae copepods (*C. finmarchicus*, *C. glacialis* and *C. hyperboreus*), *Pseudocalanus* spp and the Hyperiid amphipod *Themisto* sp.

Sources of Uncertainty

The general spatial and seasonal patterns of physical, chemical and biological oceanographic variables in the Northwest Atlantic monitored by AZMP have remained relatively consistent since the start of the program. Although there are seasonal variations in the distribution of water masses, plants and animals, these variations show generally predictable patterns. However, there is considerable uncertainty in estimates of overall abundance of phytoplankton and zooplankton. This uncertainty is caused in part by the life cycle of the animals, their patchy distribution in space, and by the limited coverage of the region by the monitoring program.

Physical (temperature, salinity) and chemical (nutrients) oceanographic variables are effectively sampled, because they exhibit fairly conservative properties that are unlikely to show precipitous changes either spatially or from year-to-year. In addition, measurements of these variables are made with a good degree of precision. The only exception occurs in surface waters where rapid changes in the abundance of phytoplankton, particularly during the spring bloom, can cause rapid depletion of nutrients.

The greatest source of uncertainty comes in our estimates of phytoplankton abundance because of the difficulties in determining the inter-annual variations in the timing, magnitude and duration of the spring phytoplankton bloom. Phytoplankton may undergo rapid changes in abundance, on time scales of days to weeks. Because our sampling is limited in time, and occasionally suffers from gaps in coverage as a result of vessel unavailability or weather, which often occurs in the sampling at our high-frequency sampling stations during the winter months, we may not sample the spring phytoplankton and other important variables adequately. Also, variations in the timing of the spring phytoplankton bloom across a region and in relation to spring oceanographic surveys may limit our ability to determine inter-annual variations in maximum phytoplankton abundance. In contrast, we are better capable of describing inter-annual variations in the abundance of dominant zooplankton species because their seasonal cycle occurs at time scales of weeks to months as a result of their longer generation times relative to phytoplankton. However, zooplankton show greater variability in their spatial distribution. Although inter-annual variations in the abundance of dominant groups, such as copepods, can be adequately assessed, variations in the abundance of rare, patchily distributed or ephemeral species cannot be reliably estimated at this time.

In several areas, the occupation of high frequency sampling stations during the winter and early spring is particularly limited, causing us to sometimes miss major events in the seasonal cycle (e.g. the onset of the spring phytoplankton bloom). Additionally, reductions in vessel scheduling within regions have also reduced the number of full observations at some sites.

CONCLUSION

While a shift to warmer ocean conditions occurred prior the implementation of the AZMP, the past decade has seen further increases in water temperatures with sea-surface temperatures that reached record values across the zone in summer 2012. In 2018, they were near normal overall for the zone, yet averaging a gradient of colder-than-normal on the Newfoundland-and-Labrador Shelf to above-normal on the Scotian Shelf where many monthly records were broken. Winter average sea ice extent was below normal on the NL Shelf and was 11th lowest since records began in 1969 in the Gulf of St. Lawrence. Consistent with this, summer cold intermediate layer conditions were mostly warmer and thinner than normal on the NL Shelf and in the Gulf of St. Lawrence, but there were no measurements of the usually reported CIL metrics on the Scotian Shelf because of limited ship availability. Bottom temperatures in the Atlantic Zone ranged from normal to above-normal when associated with cold intermediate depths such as on the NL shelf and Magdalen Shallows, to above normal for deeper waters, including a new 100-year high-temperature record for the Gulf at 250 and 300 m and a record high temperature in Georges Basin. Again, there were no measurements of the usually reported bottom temperature metrics for portions of the Scotian Shelf East of the Bay of Fundy and Gulf of Maine region because of limited ship availability.

Patterns of variation in biogeochemical variables appear dominated by short-term fluctuations, because sampling was initiated only in 1999 but there is evidence of multi-year trends in recent years. The current state of the biogeochemical environment demonstrates some spatial structuring across the Atlantic Zone. Overall, there appear to have been important changes in general patterns of productivity of lower trophic levels in recent years. General declines in nutrient and chlorophyll inventories may be indicative of lower ecosystem production potential than in the previous decade and the shift in zooplankton community structure from large lipid-rich copepods to smaller taxa may have consequences to the transfer efficiency from primary producers to upper trophic levels.

Near-bottom pH and aragonite saturation are generally much lower in the Gulf of St. Lawrence than on the Grand Banks and Scotian Shelf. Near-bottom aragonite is under-saturated throughout most of the Gulf of St. Lawrence, including the shallow waters of the Southern Gulf. The occurrence of cold water on the Newfoundland and Labrador Shelf is coincident with near under-saturated conditions. New record lows of deep dissolved oxygen concentration were measured in 2018 in the Laurentian Channel, from Cabot Strait to the central Gulf of St. Lawrence.

In the central Labrador Sea, the winter mixed layer and convective overturning reached a maximum depth of 2,000 m, arguably the deepest since the record of 2,400 m in 1994, and the resulting Labrador Sea Water year class is one of the largest ever observed outside of the early-1990s.



Fisheries and Oceans
Canada

Pêches et Océans
Canada

Ecosystems and
Oceans Science

Sciences des écosystèmes
et des océans

**Quebec, Newfoundland and Labrador,
Gulf, and Maritimes Regions**

**Canadian Science Advisory Secretariat
Science Advisory Report 2019/034**

LIST OF MEETING PARTICIPANTS

Nom	Affiliation
Allain, Renée	DFO, Science – Gulf Region
Bélanger, David	DFO, Science – Newfoundland and Labrador Region
Blais, Marjolaine	DFO, Science – Quebec Region
Boivin, Brian	DFO, Science – Quebec Region
Bond, Shelley	DFO, Science – Maritimes Region
Bourgault-Brunelle, Corinne	DFO, Canadian Meteorological Centre – Dorval
Brickman, David	DFO, Science – Maritimes Region
Cardoso, Diana	DFO, Science – Maritimes Region
Casault, Benoit	DFO, Science – Maritimes Region
Caverhill, Carla	DFO, Science – Maritimes Region
Chassé, Joël	DFO, Science – Gulf Region
Cogswell, Andrew	DFO, Science – Maritimes Region
Cyr, Frederic	DFO, Science – Newfoundland and Labrador Region
Devine, Laure	DFO, Science – Quebec Region
Devred, Emmanuel	DFO, Science – Maritimes Region
Fife, Jack	DFO, Science – Maritimes Region
Fishman, David	DFO, Science – Gulf Region
Galbraith, Peter	DFO, Science – Quebec Region
Hebert, Dave	DFO, Science – Maritimes Region
Johnson, Catherine	DFO, Science – Maritimes Region
Lavoie, Diane	DFO, Science – Quebec Region
Layton, Chantelle	DFO, Science – Maritimes Region
LeClainche, Yvonnick	DFO, Canadian Meteorological Centre – Dorval
Ouellet, Mathieu	DFO, Science – Ottawa
Pepin, Pierre	DFO, Science – Newfoundland and Labrador Region
Pernica, Patricia	DFO, Canadian Meteorological Centre – Dorval
Plourde, Stéphane	DFO, Science – Quebec Region
Punshon, Stephen	DFO, Science – Maritimes Region
Riche, Olivier	DFO, Science – Quebec Region
Ringuette, Marc	DFO, Science – Maritimes Region
Shaw, Jean-Luc	DFO, Science – Quebec Region
Snook, Stephen	DFO, Science – Newfoundland and Labrador Region
St-Pierre, Félix	DFO, Science – Quebec Region
Starr, Michel	DFO, Science – Quebec Region
Wan, Di	DFO, Science – Pacific Region
Yashayaev, Igor	DFO, Science – Maritimes Region

SOURCES OF INFORMATION

This Science Advisory Report is from the Twenty-first Annual Meeting of the Atlantic Zone Monitoring Program (AZMP) held March 19-22, 2019. Additional publications from this meeting will be posted on the [Fisheries and Oceans Canada \(DFO\) Science Advisory Schedule](#) as they become available.

- Blais, M., Devine, L., Lehoux, C., Galbraith, P.S., Michaud, S., Plourde, S., and Scarratt, M. 2018. [Chemical and Biological Oceanographic Conditions in the Estuary and Gulf of St. Lawrence during 2016](#). DFO Can. Sci. Advis. Sec. Res. Doc. 2018/037. iv + 57 pp.
- Colbourne, E., Holden, J., Snook, S., Han, G., Lewis, S., Senciall, D., Bailey, W., Higdon, J., and Chen, N. 2017. [Physical Oceanographic Conditions on the Newfoundland and Labrador Shelf during 2016](#). DFO Can. Sci. Advis. Sec. Res. Doc. 2017/079. v + 50 p.
- Galbraith, P.S., Chassé, J., Caverhill, C., Nicot, P., Gilbert, D., Lefaiivre, D. and Lafleur, C. 2018. [Physical Oceanographic Conditions in the Gulf of St. Lawrence during 2017](#). DFO Can. Sci. Advis. Sec. Res. Doc. 2018/050. v + 79 p.
- Hebert, D., Pettipas, R., Brickman, D., and Dever, M. 2018. [Meteorological, Sea Ice and Physical Oceanographic Conditions on the Scotian Shelf and in the Gulf of Maine during 2016](#). DFO Can. Sci. Advis. Sec. Res. Doc. 2018/016. v + 53 p.
- Johnson, C., Devred, E., Casault, B., Head, E., and Spry, J. 2018. [Optical, Chemical, and Biological Oceanographic Conditions on the Scotian Shelf and in the Eastern Gulf of Maine in 2016](#). DFO Can. Sci. Advis. Sec. Res. Doc. 2018/017. v + 58 p.
- Pepin, P., Maillet, G., Fraser, S., Doyle, G., Robar, A., Shears, T., and Redmond, G. 2017. Optical, chemical, and biological oceanographic conditions on the Newfoundland and Labrador Shelf during 2014-2015. DFO Can. Sci. Advis. Sec. Res. Doc. 2017/009. v + 37 p.
- Therriault, J.-C., Petrie, B., Pepin, P., Gagnon, J., Gregory, D., Helbig, J., Herman, A., Lefaiivre, D., Mitchell, M., Pelchat, B., Runge, J., and Sameoto, D. 1998. Proposal for a northwest Atlantic zonal monitoring program. Can. Tech. Rep. Hydrogr. Ocean Sci. 194: vii+57p.

APPENDIX - FIGURES

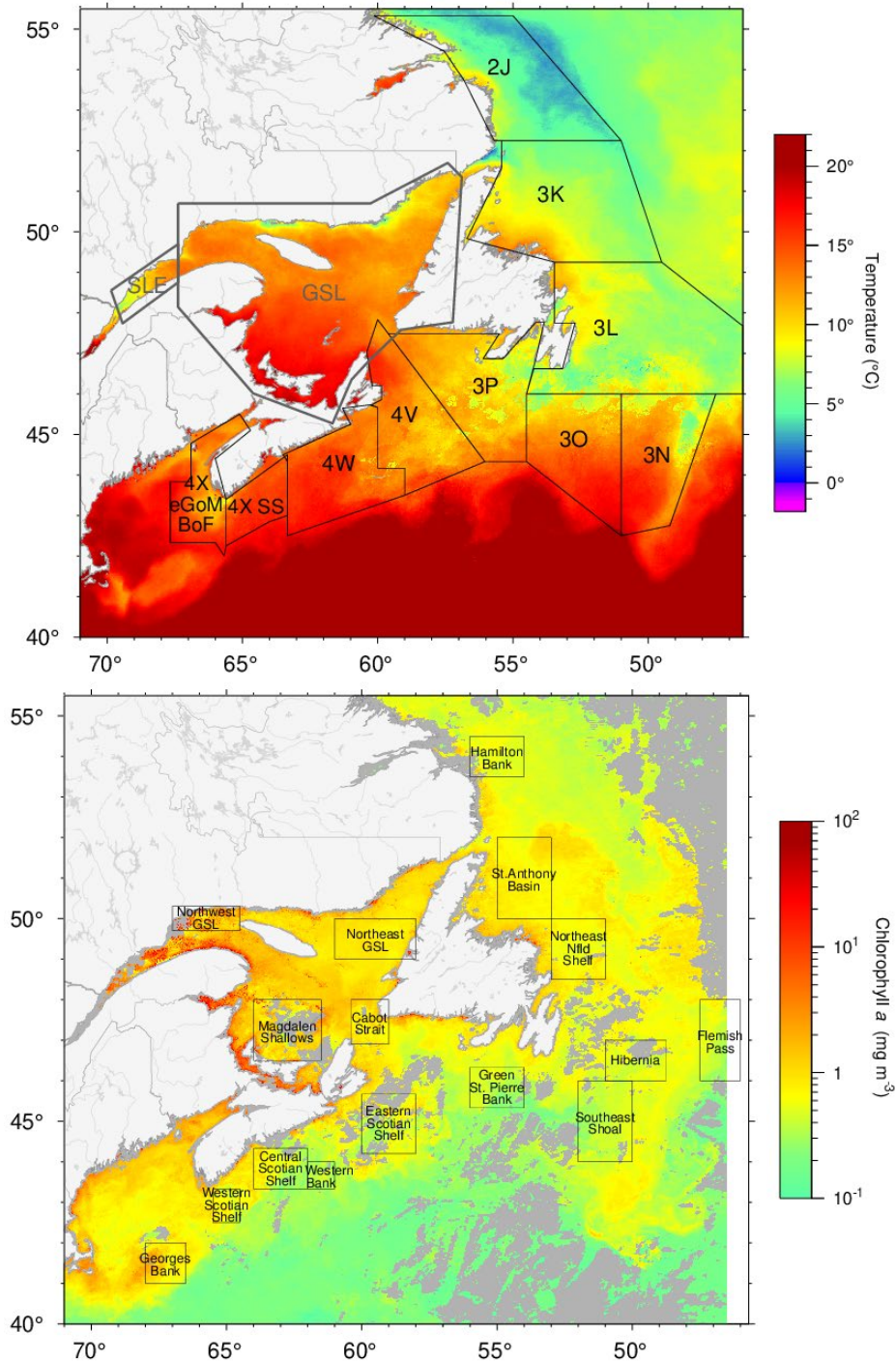


Figure 3. Areas used for (top) temperature and (bottom) ocean color averages. (Top) North Atlantic Fisheries Organization Divisions are cut off at the shelf break. The acronyms GSL and SLE are Gulf of St. Lawrence and St. Lawrence Estuary respectively. Sea-surface temperatures are shown for July 2018 and ocean colour chlorophyll a concentrations are for the first half of October 2018.

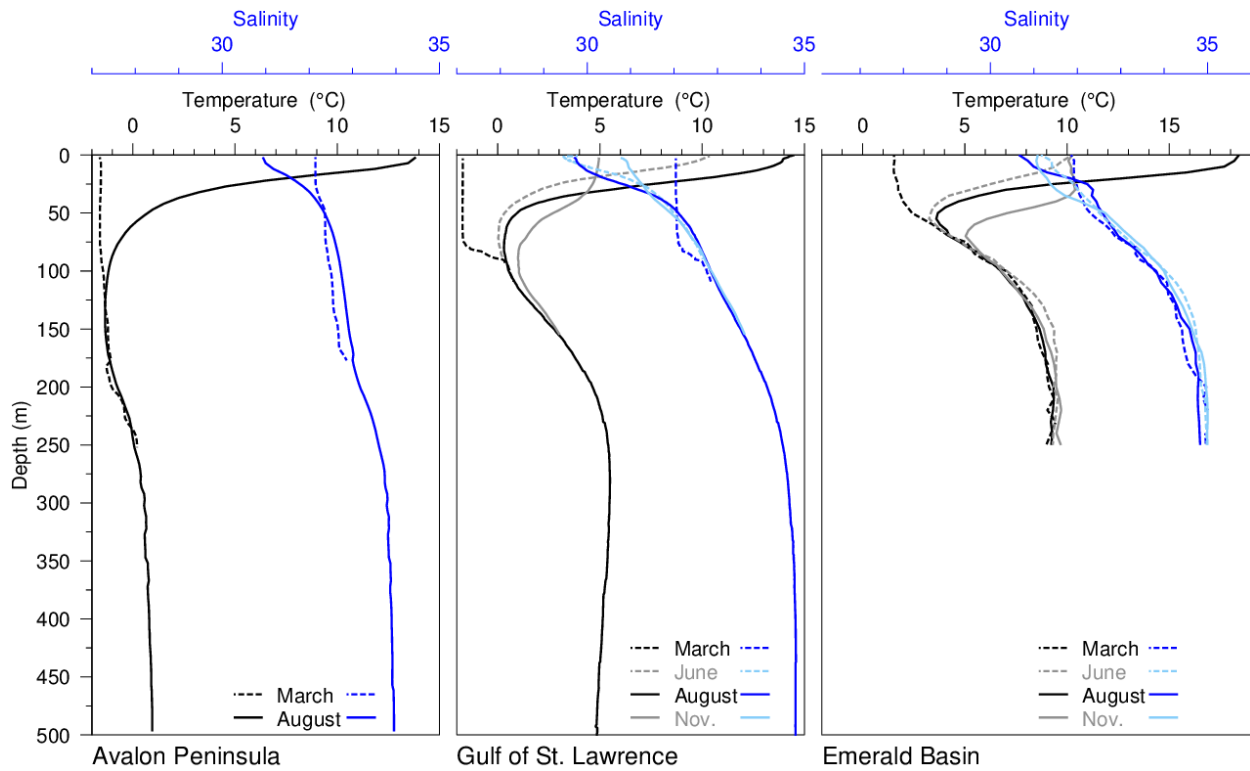


Figure 4. Typical seasonal progression of the depth profile of temperature and salinity observed in three representative regions across the zone. The Avalon Peninsula region is delimited by 45-50°N and 50-55°W and shown are the averages of profiles for March and August between 2015 and 2017, calculated from 5 and 302 profiles respectively. The Gulf of St. Lawrence profiles are averages of observations in June, August and November 2007 in the northern Gulf, while the March profile shows a single winter temperature profile (March 2008), with near-freezing temperatures in the top 75 m. The Emerald Basin profiles are monthly climatological averages for 1981-2010.

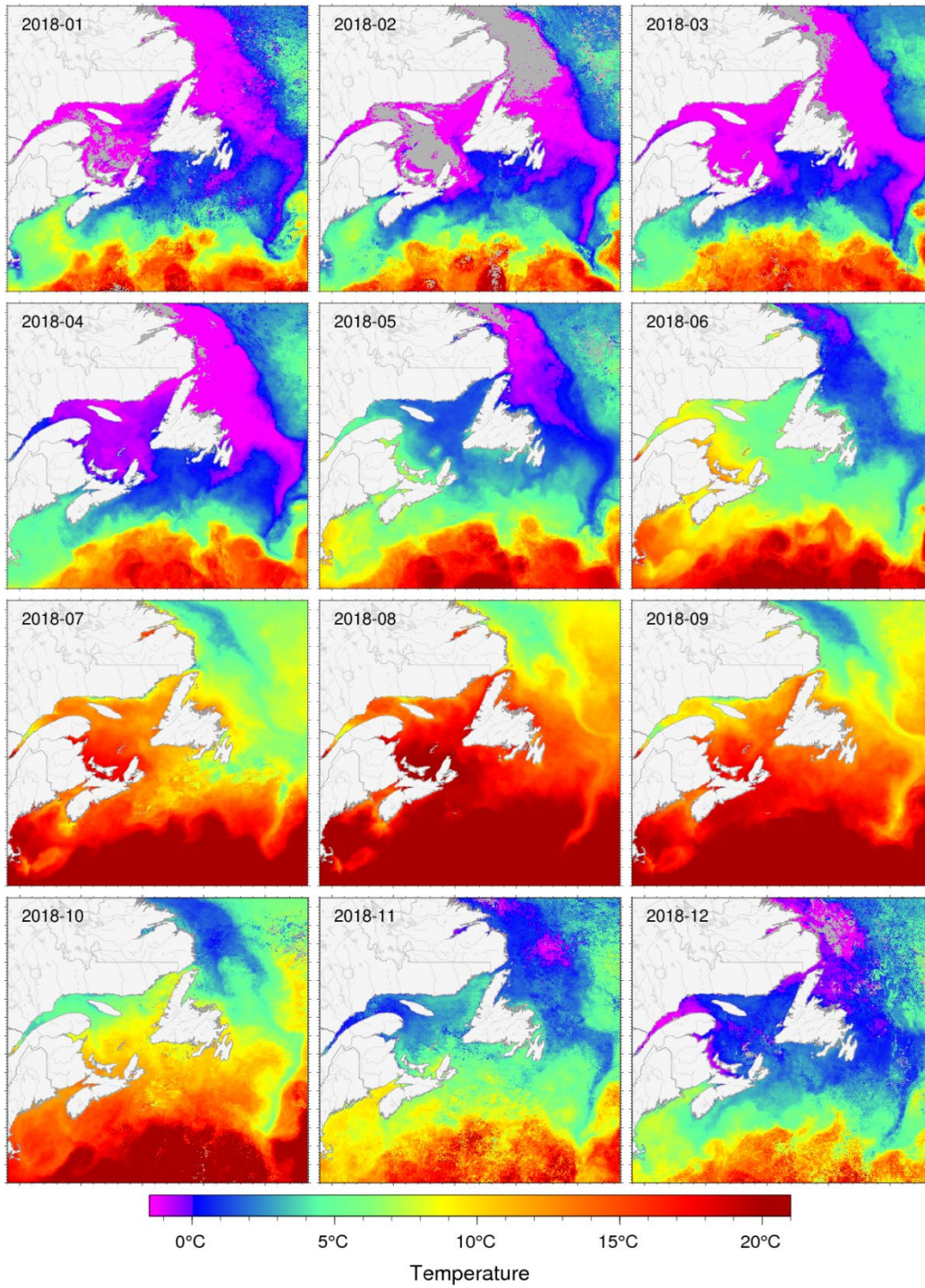


Figure 5. Sea-surface temperature monthly averages for 2018 in the Atlantic zone.

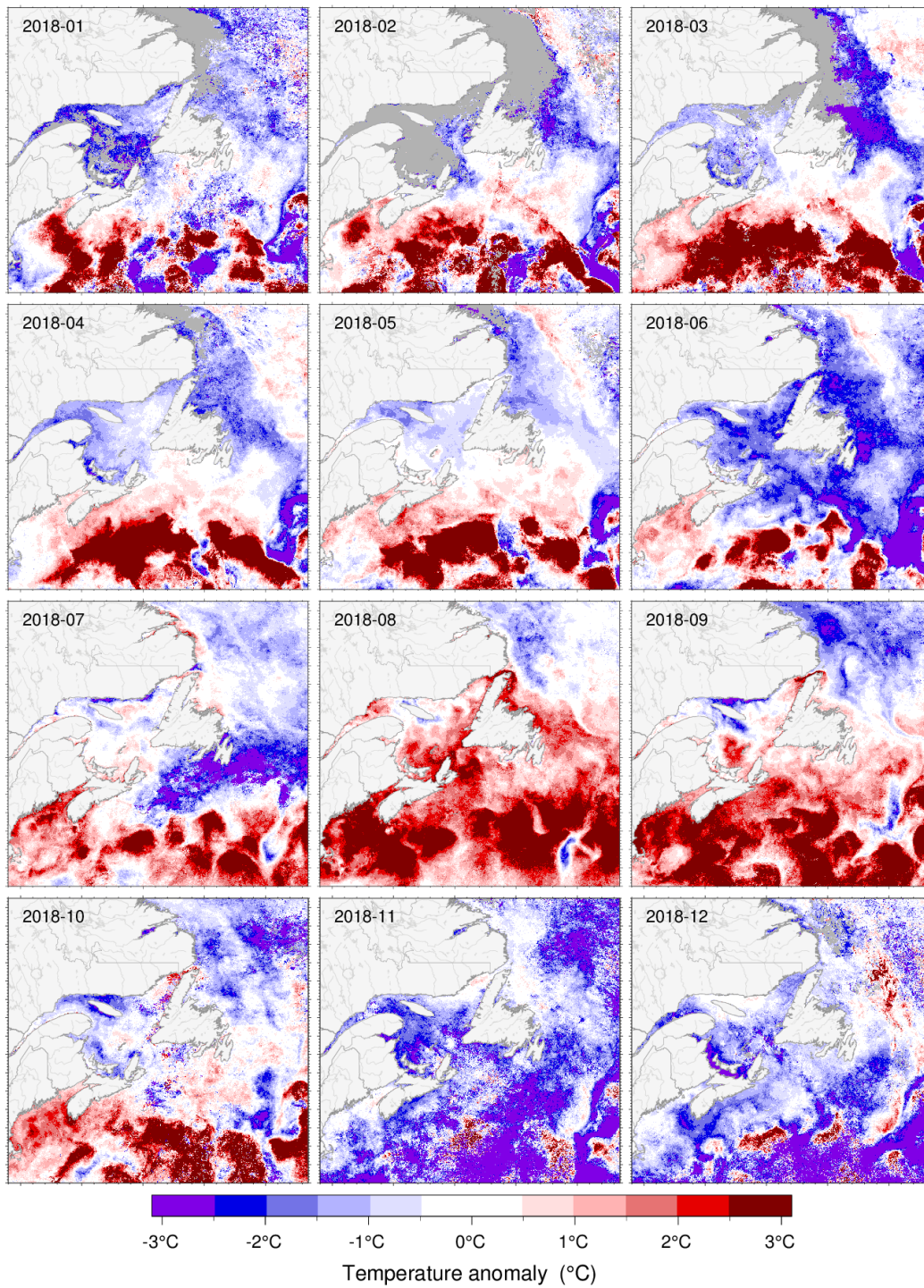


Figure 6. Sea-surface temperature monthly anomalies for 2018 in the Atlantic zone. Temperature anomalies are based on a 1985-2010 climatology.

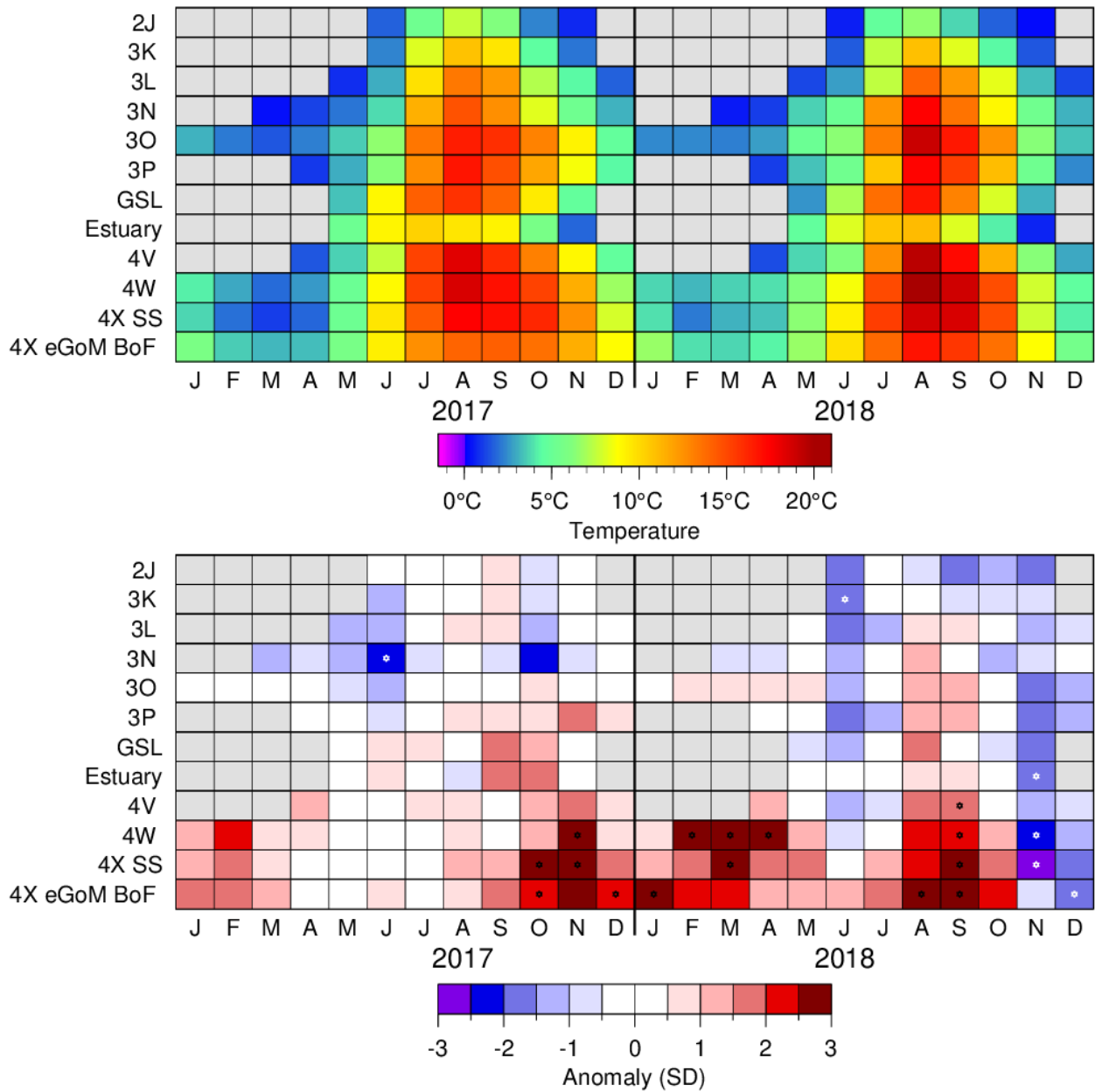


Figure 7. Monthly sea-surface temperature temperatures (top) and anomalies (bottom) for ice-free months of 2017-18, averaged over the 12 regions shown in Figure 3. Regions and months for which the average temperature was at a record high or low are indicated by a star.

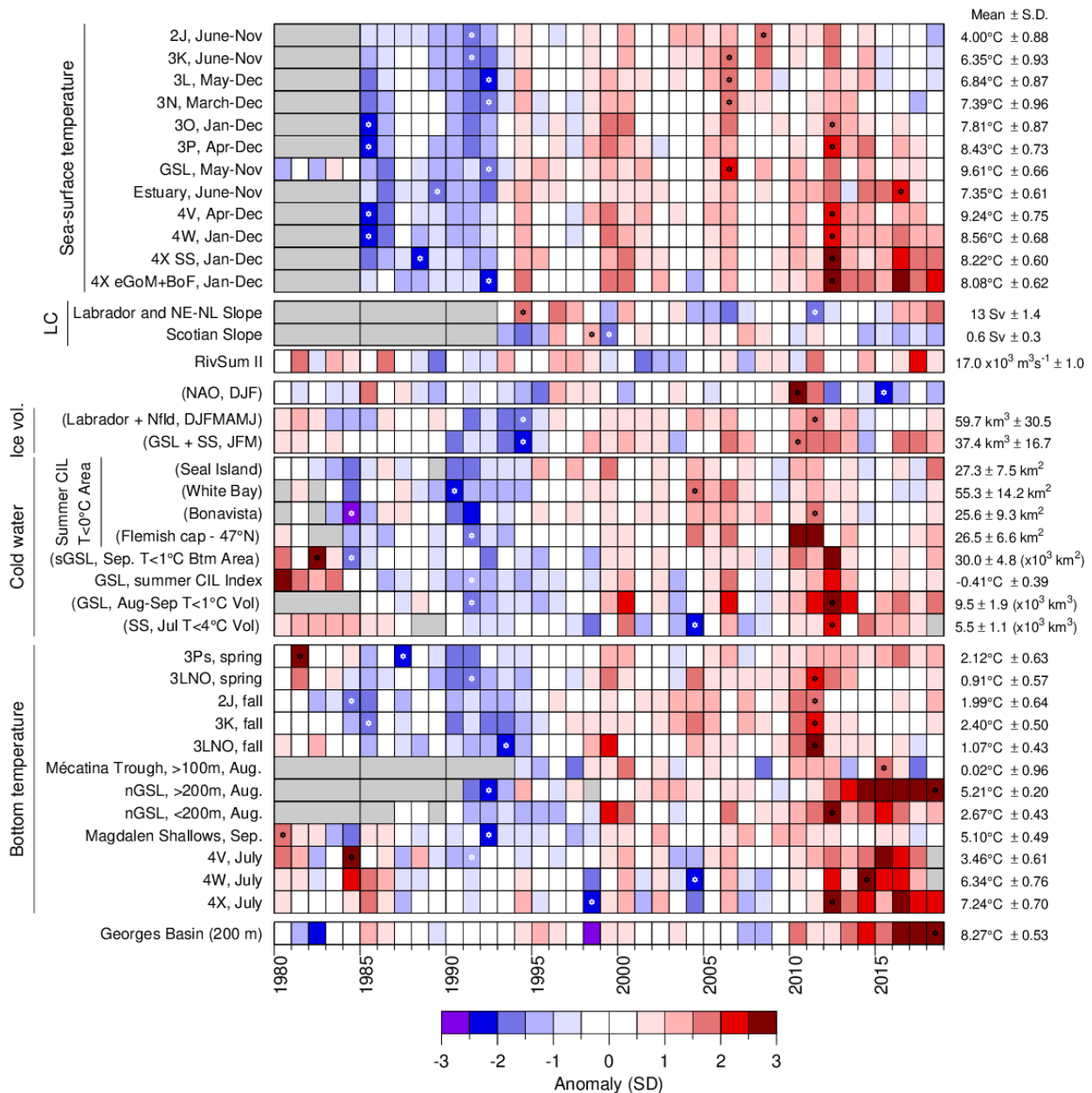


Figure 8. Time series of oceanographic variables, 1980–2018. A grey cell indicates missing data, a white cell is a value within 0.5 SD of the long-term mean based on data from 1981–2010 when possible; a red cell indicates above normal conditions, and a blue cell below normal. Variables whose names appear in parentheses have reversed colour coding, whereby reds are lower than normal values that correspond to warm conditions. More intense colours indicate larger anomalies. Series minimum and maximums are indicated by a star when they occur in the displayed time span. Long-term means and standard deviations are shown on the right-hand side of the figure. Sea-surface temperature for the GSL for 1980–84 is based on an air temperature proxy. (LC is Labrador Current transports. RivSum II is the combined runoff flowing into the St. Lawrence Estuary. North Atlantic Oscillation [NAO], GSL [Gulf of St. Lawrence], SS [Scotian Shelf], sGSL [southern Gulf of St. Lawrence], nGSL [northern Gulf of St. Lawrence], cold intermediate layer [CIL]).

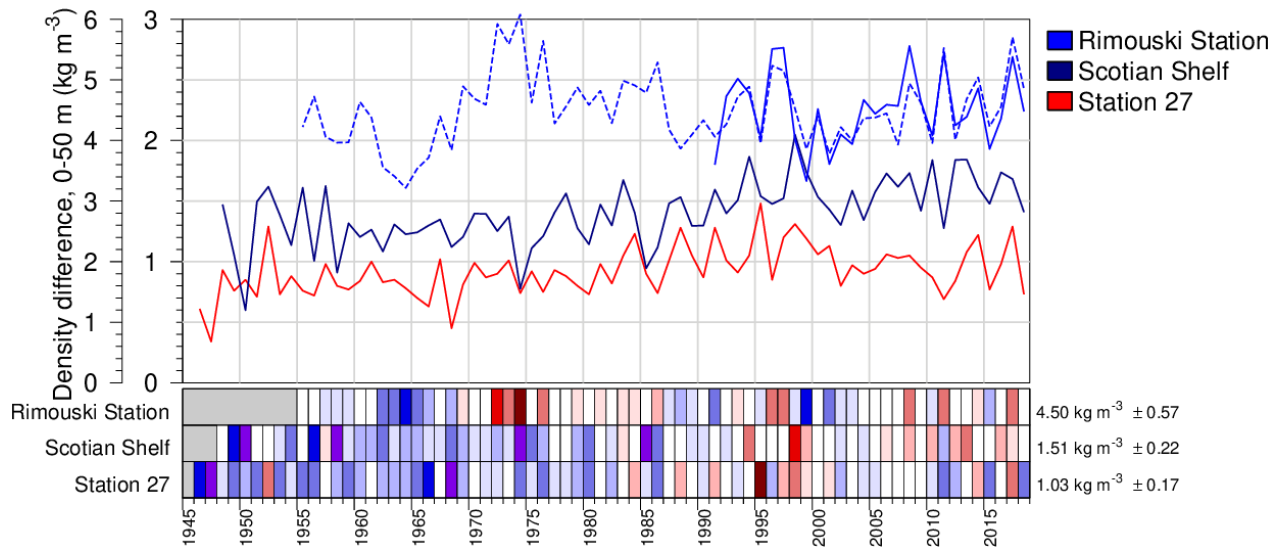


Figure 9. Stratification trends on the southern NL Shelf (at Station 27), Scotian Shelf and St. Lawrence Estuary (Rimouski Station). The dashed line for Rimouski Station is a proxy based on fresh water runoff. The three bottom lines show normalized anomalies based on the 1981–2010 period. A grey cell indicates missing data, a white cell is a value within 0.5 SD of the long-term mean, a red cell indicates above normal conditions, and a blue cell below normal.

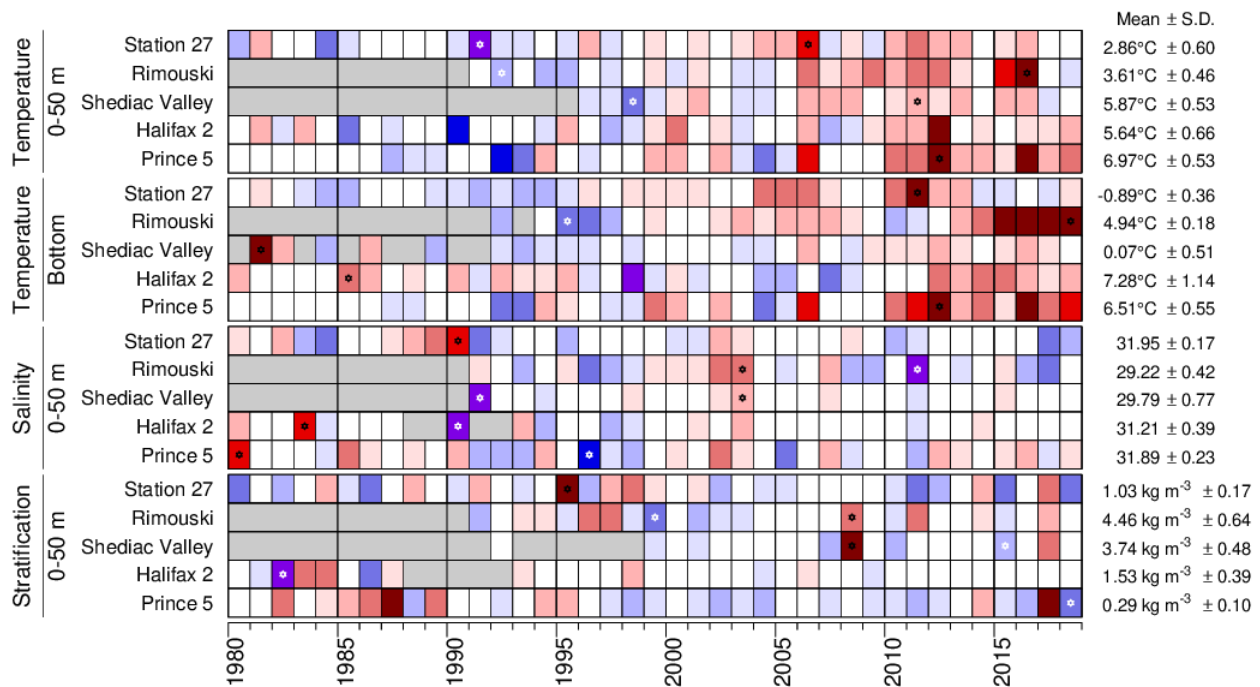


Figure 10. Time series of oceanographic variables at AZMP high-frequency sampling stations, 1980-2018. A grey cell indicates missing data, a white cell is a value within 0.5 SD of the long-term mean based on data from 1981–2010 when possible; for high-frequency station depth-averaged temperature, a red cell indicates warmer than normal conditions, a blue cell colder than normal. More intense colours indicate larger anomalies. For salinity and stratification, red corresponds to above normal conditions. Series minimum and maximums are indicated by a star when they occur in the displayed time span. Climatological means and standard deviations are shown on the right-hand side of the figure. Palette as in Figures 7 and 8.

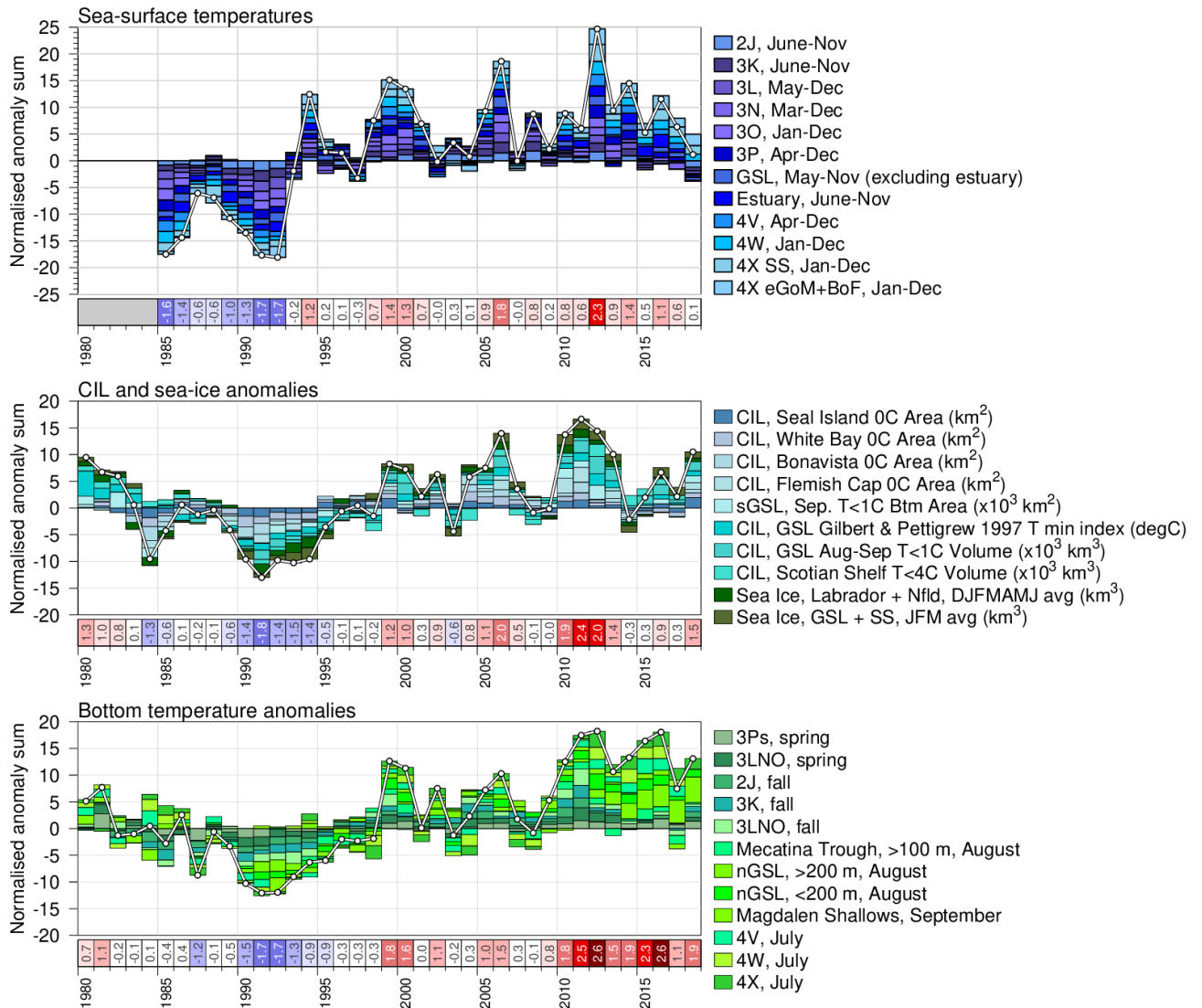


Figure 11. Composite climate indices (white lines and dots) derived by summing various standardized anomalies from different parts of the environment (colored boxes stacked above the abscissa are positive anomalies, and below are negative). Top panel sums sea-surface temperature anomalies, middle panel sums cold intermediate layer and sea-ice anomalies with areas and volumes in reversed scale (positive anomalies are warm conditions) and bottom panel sums bottom temperature anomalies.

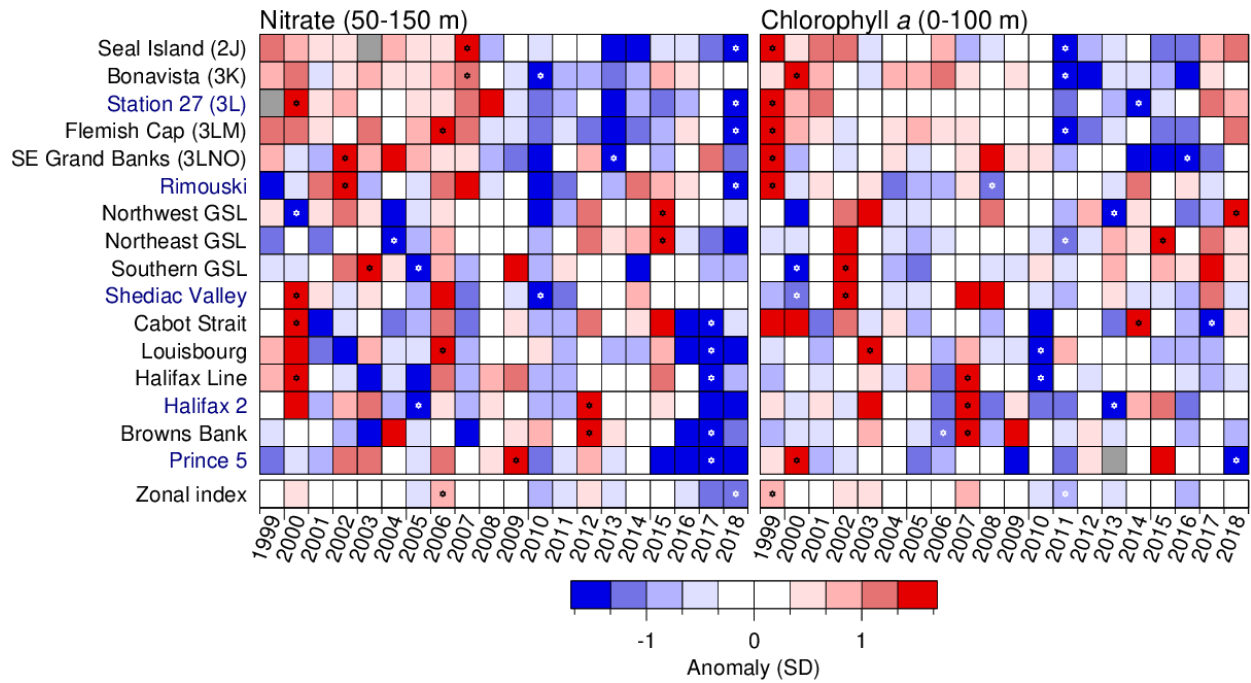


Figure 12. Time series of deep water nitrate inventories (50–150 m) and surface phytoplankton standing stocks (expressed as chlorophyll a 0–100 m mean concentration) at AZMP sections (labelled in red in Figure 2) and high-frequency sampling stations (labelled in blacks in Figure 2), 1999–2018. A grey cell indicates missing data, a white cell is a value within 0.5 SD of the long-term mean based on data from 1999–2015; a red cell indicates above normal inventories, a blue cell below normal. More intense colours indicate larger anomalies. Series minimum and maximums are indicated by a star; note change in palette.

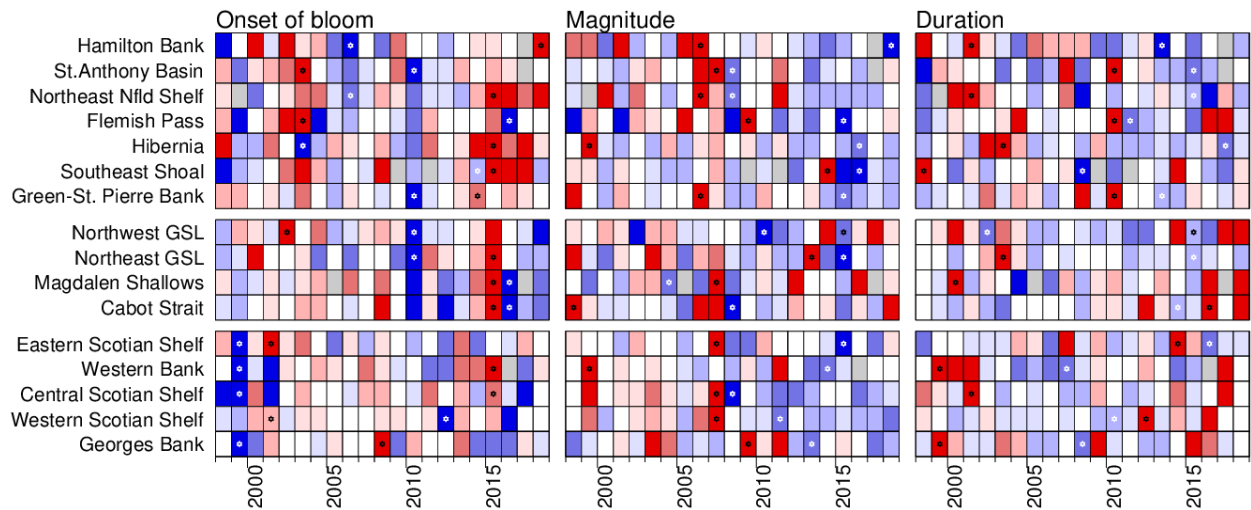


Figure 13. Time series of remotely sensed bloom parameter anomalies in various regions (onset of bloom, magnitude and duration) 1998–2018. Data are from SeaWiFS for the period 1998–2007, from MODIS for 2008–2011, and VIIRS for from 2011 to the present. Series minimum and maximums are indicated by a star. See Figure 3 for area definitions. Palette as in Figure 12.

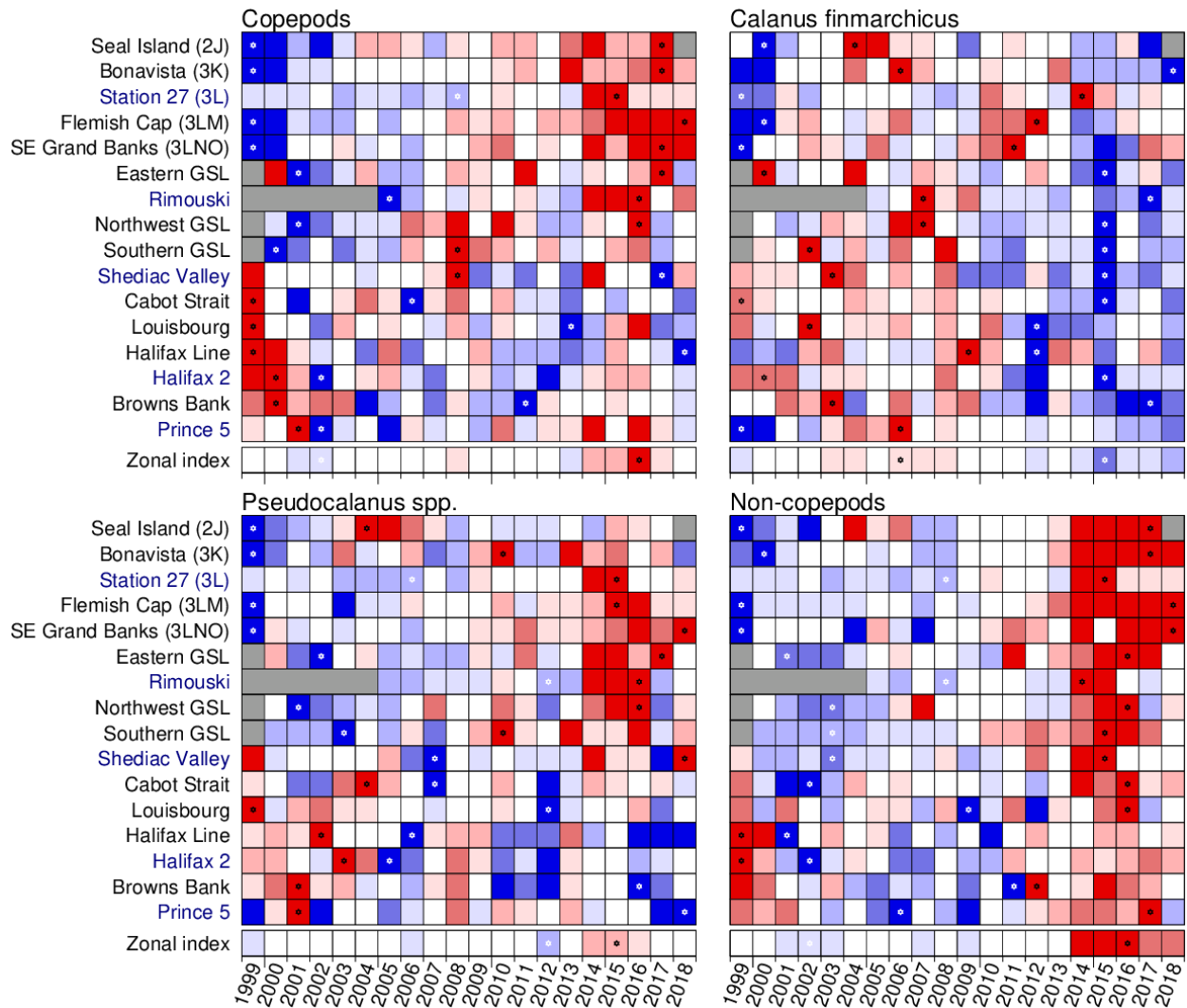


Figure 14. Time series of the standing stocks of total copepods, *Calanus finmarchicus*, *Pseudocalanus* spp., and non-copepod zooplankton, 1999–2018. A grey cell indicates missing data, a white cell is a value within 0.5 SD of the long-term mean based on data from 1999–2015; a red cell indicates above normal inventories, a blue cell below normal. More intense colours indicate larger anomalies. Series minimum and maximums are indicated by a star. Palette as in Figure 12.

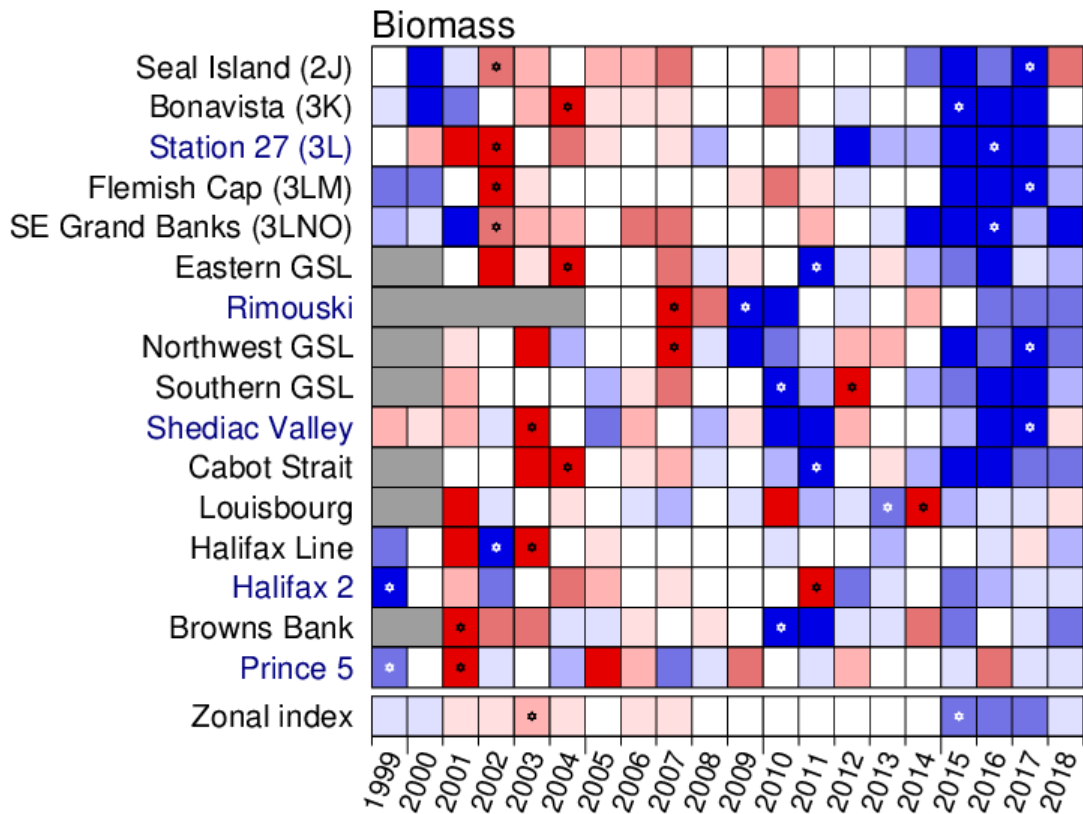


Figure 15. Time series of zooplankton biomass (dry weight), 1999 to 2018. Biomass is measured on the 0.2-10 mm size fraction which is usually dominated by copepods. A grey cell indicates missing data, a white cell is a value within 0.5 SD of the long-term mean based on data from 1999–2015; a red cell indicates above normal inventories, a blue cell below normal. More intense colours indicate larger anomalies. Series minimums and maximums are indicated by a star. The lowest row is the averaged (anomaly across all sections and fixed stations in a given year. Palette as in Figure 12.

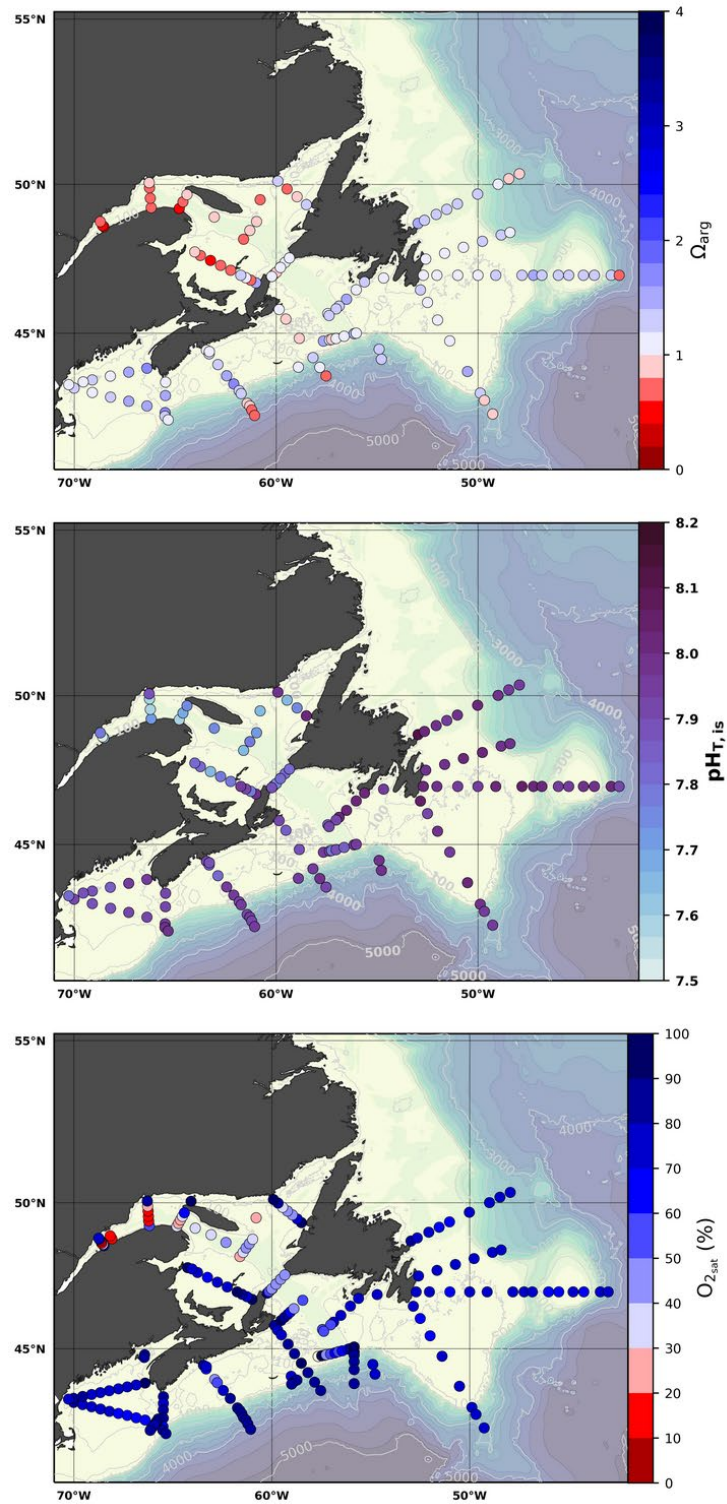


Figure 16. Bottom ocean acidification conditions during fall 2018 for the Gulf of St. Lawrence, Scotian Shelf and Newfoundland Shelf: aragonite saturation state (top), in situ pH using total scale (center) and dissolved oxygen saturation (lower). Undersaturated conditions relative to aragonite and hypoxic oxygen conditions are plotted in red colors.

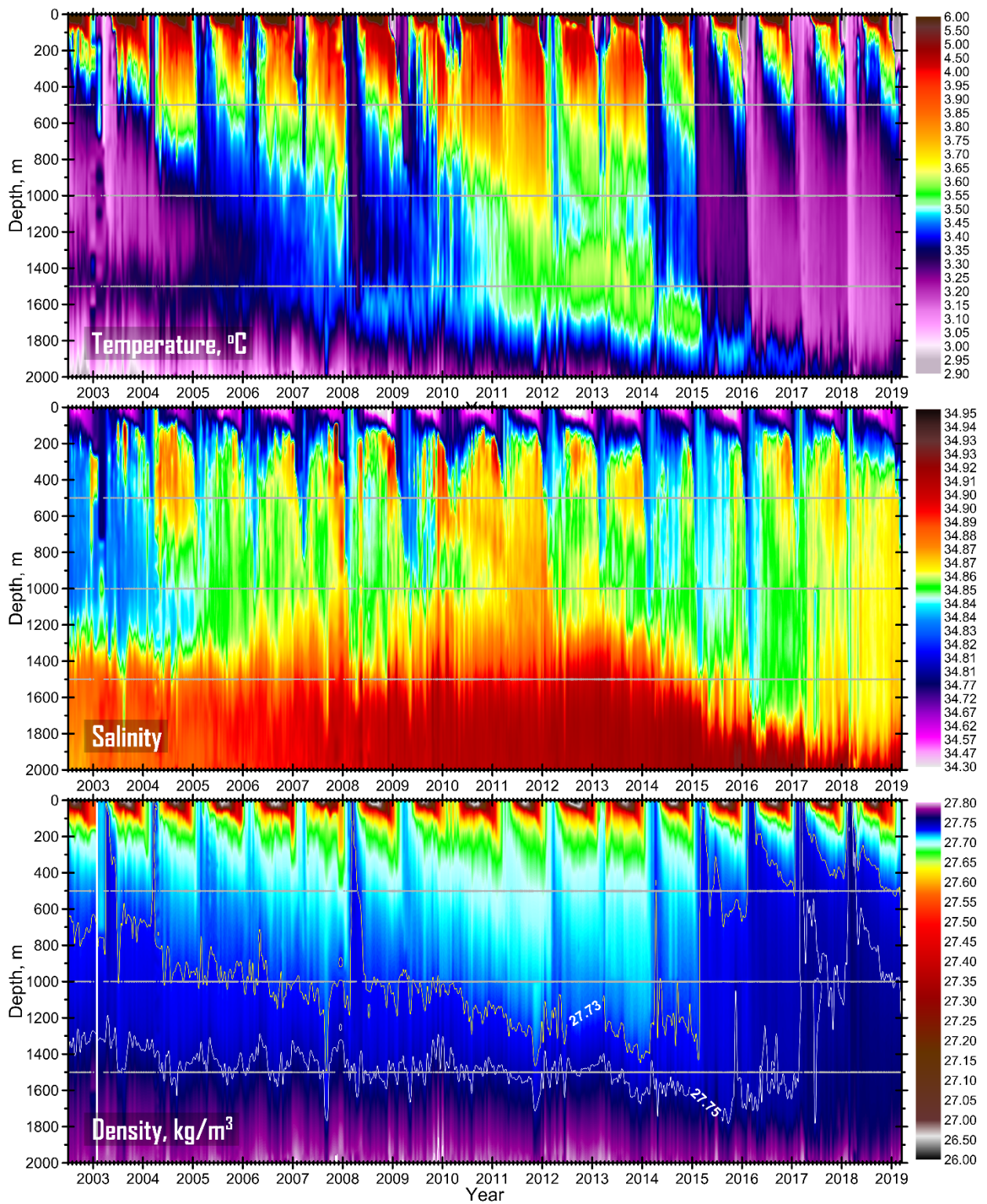


Figure 17 Temperature and salinity in the central Labrador Sea based on the measurements collected by the Argo floats and research vessels during 2002-18.

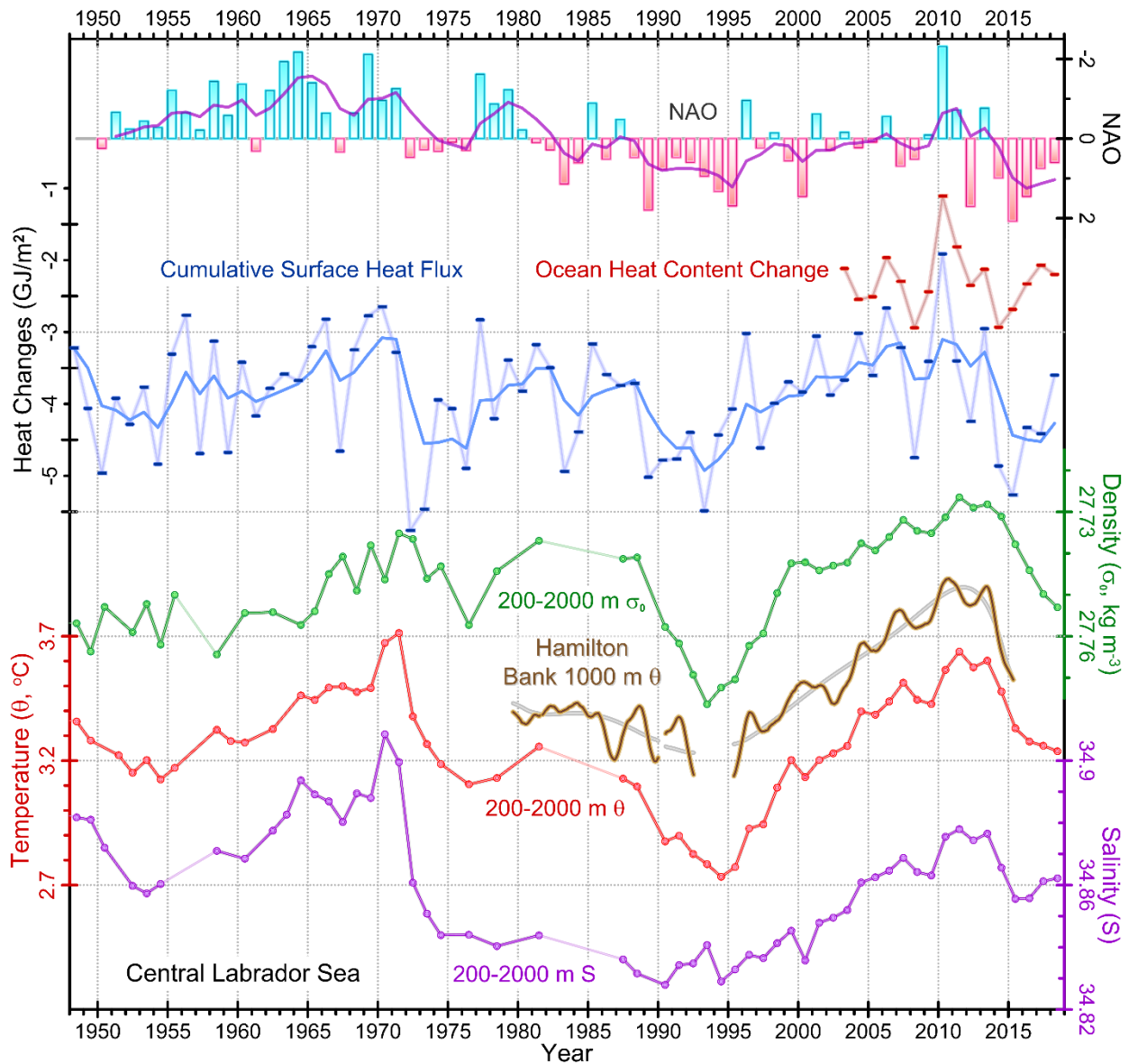


Figure 18. Key climatic indices for the central Labrador Sea since 1948. The upper bar graph shows the normalized winter NAO index (inverted scale). The next two time series represent heat changes in the central Labrador Sea during each yearly cooling season: first, the change in ocean heat content during each ocean cooling season of the Argo era (2003-present; providing all-season data coverage) based on temperature profiles (red), and, second, the change inferred from the cumulative surface heat flux computed from National Centers for Environmental Prediction (blue) and the value a five-point filter (solid line with value plotted at the last year of each period). The lower four curves are estimates of the annual density (σ_0 , referenced to the surface; inverted scale), mean temperature (θ) and salinity (S) averaged over the 200–2000 m interval in the central Labrador Sea, and temperature from near-bottom current meter at about/approximately 1000 m depth east of Hamilton Bank.

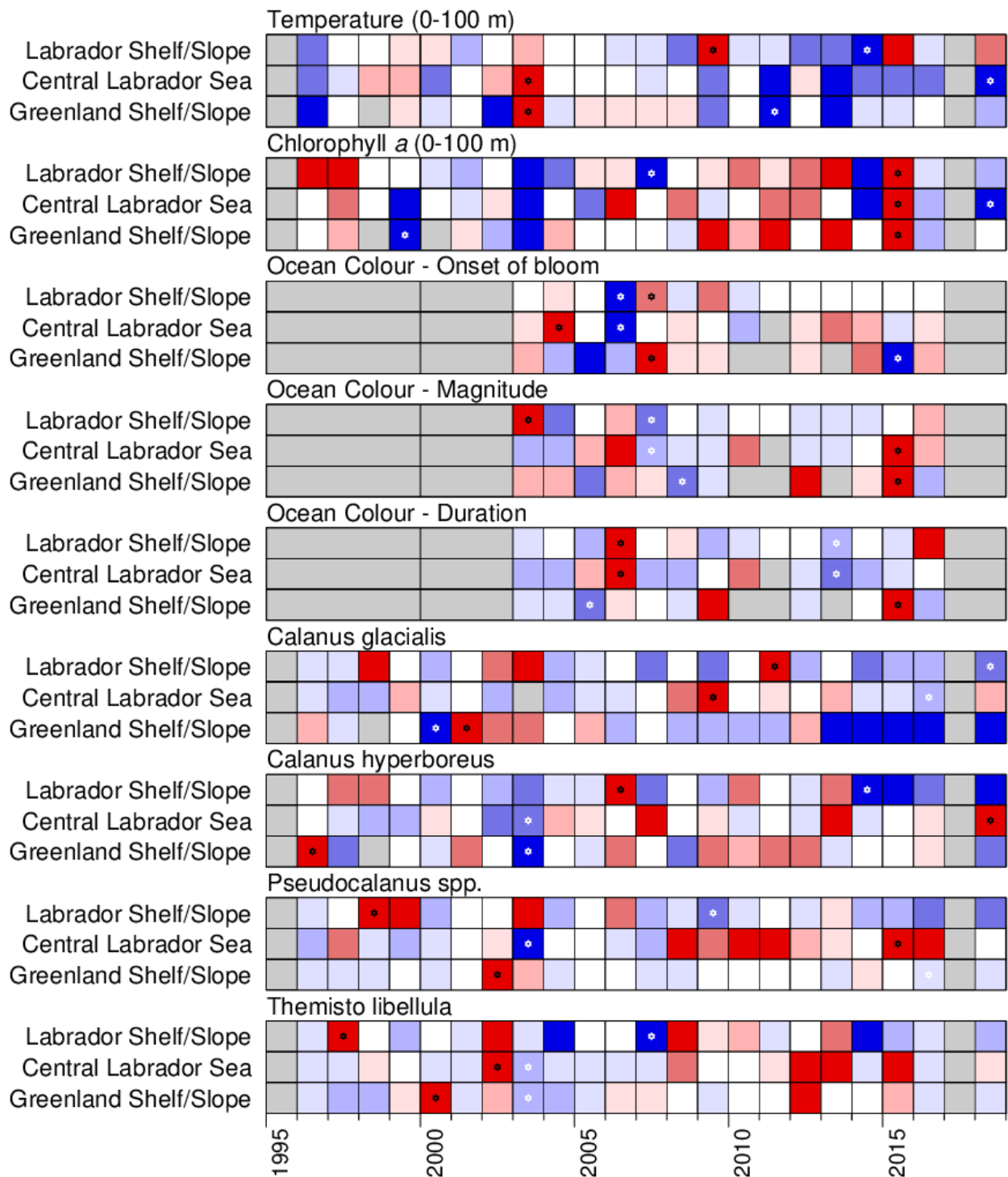


Figure 19. Normalized annual anomalies for the Labrador Sea. Temperature and chlorophyll are 0-100 m averages from oceanographic station data. Bloom parameters (onset of bloom, magnitude and duration) are derived from remote sensing observations. Zooplankton data represent anomalies of abundance estimation collected in May/June along the AR7W line between 1995 and 2018. Palette as in Figure 10.

THIS REPORT IS AVAILABLE FROM THE:

Center for Science Advice (CSA)
Quebec Region
Fisheries and Oceans Canada
Maurice Lamontagne Institute
850 route de la Mer
P.O. Box 1000
Mont-Joli (Quebec)
Canada G5H 3Z4

Telephone: (418) 775-0825

E-Mail: bras@dfo-mpo.gc.ca

Internet address: www.dfo-mpo.gc.ca/csas-sccs/

ISSN 1919-5087

© Her Majesty the Queen in Right of Canada, 2019



Correct Citation for this Publication:

DFO. 2019. Oceanographic Conditions in the Atlantic Zone in 2018. DFO Can. Sci. Advis. Sec. Sci. Advis. Rep. 2019/034.

Aussi disponible en français :

MPO. 2019. Conditions océanographiques dans la zone Atlantique en 2018. Secr. can. de consult. sci. du MPO, Avis sci. 2019/034.