

**FISHERIES RESEARCH BOARD  
OF CANADA**

**MANUSCRIPT REPORT SERIES  
(OCEANOGRAPHIC and LIMNOLOGICAL)**

**No. 160**

**Observations of  
Seawater Temperature and Salinity  
on the  
Pacific Coast of Canada**

**Volume XXIII  
1963**

**by  
H. J. Hollister**

**Pacific Oceanographic Group  
Nanaimo, B.C.**

**August 10, 1964**

**Programmed  
by  
THE CANADIAN COMMITTEE ON OCEANOGRAPHY**

**FISHERIES RESEARCH BOARD  
OF CANADA**

**MANUSCRIPT REPORT SERIES  
(OCEANOGRAPHIC and LIMNOLOGICAL)**

**No. 160**

**Observations of  
Seawater Temperature and Salinity  
on the  
Pacific Coast of Canada**

**Volume XXIII  
1963**

**by  
H. J. Hollister**

**Pacific Oceanographic Group  
Nanaimo, B.C.**

**August 10, 1964**

**Programmed  
by  
THE CANADIAN COMMITTEE ON OCEANOGRAPHY**

TABLE OF CONTENTS

	Page No.
Introduction .....	1
Procedure of observations .....	1
The 1963 data volume .....	2
References .....	3
Summary of errata in all annual volumes .....	4
Table 1. Location of stations and page index of daily observations tabulations .....	10
Table 2. Summary of 1963 monthly mean temperatures, classification indices, differences from 1962 means, and monthly extremes .....	14
Table 3. Summary of 1963 monthly mean salinities, classification indices, differences from 1962 means, and monthly extremes .....	17
Tabulations of daily seawater temperatures and salinities at each station .....	20
Summary of monthly mean temperatures and salinities and classification indices at East Point for the period 1954-1963 .....	77

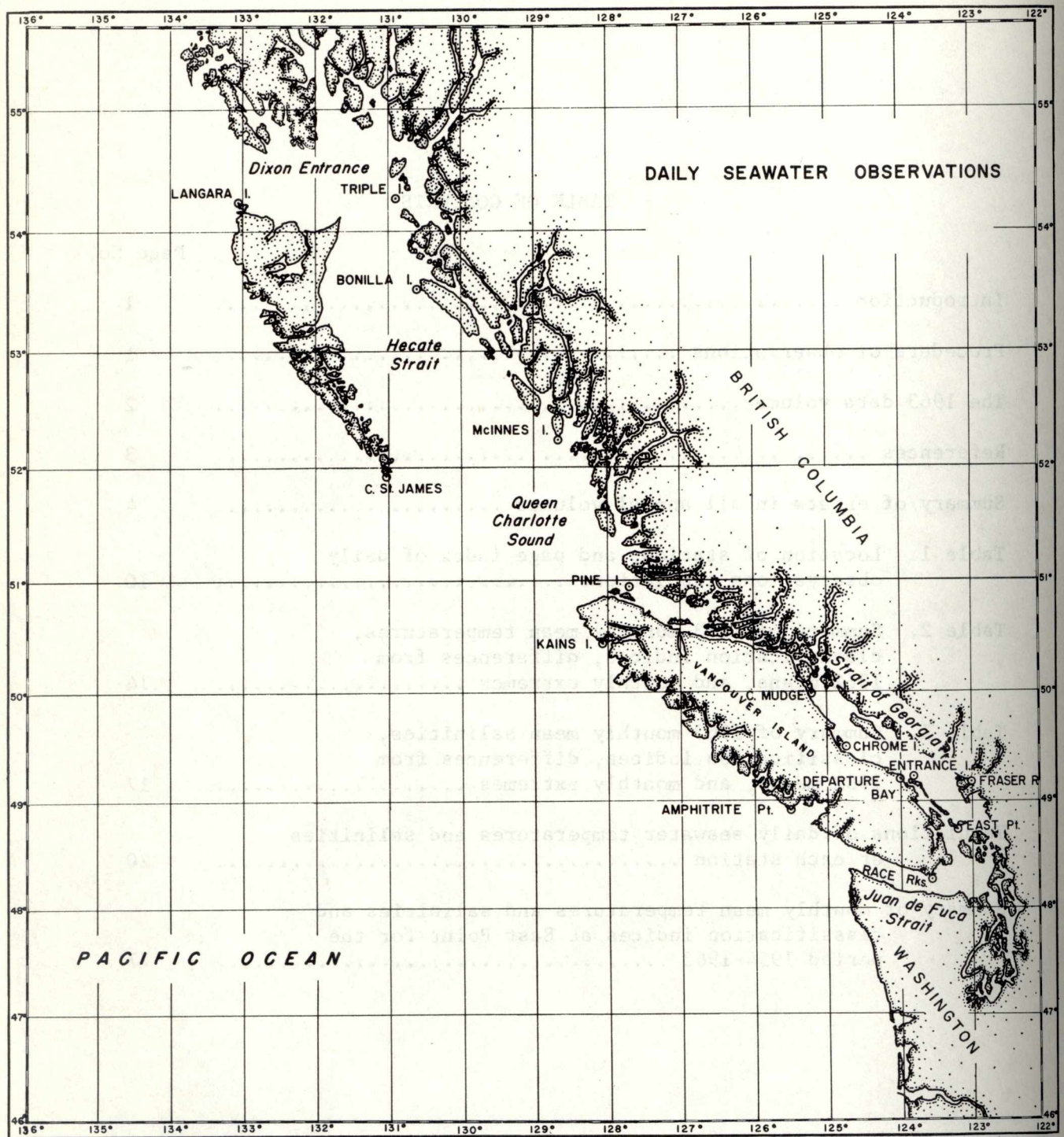


Figure 1. Location of stations making daily seawater observations.

# Observations of Seawater Temperature and Salinity on the Pacific Coast of Canada

Volume XXIII, 1963

by

H.J. Hollister

## Introduction

Daily observations of surface seawater temperatures and the collection of samples for salinity analysis have been made since 1934 at a number of locations along the extensive British Columbia coast. During 1963, observations were continued at 14 stations (Table 1), (Fig. 1). The majority of the sampling locations are at lightstations. A full description of the locations, accompanied by photographs, is given in the 1959 data volume. Additional photo views of some locations are shown in Fig. 2 to 7. The services of the lightkeepers as voluntary observers have been arranged in cooperation with the Department of Transport. The observers receive a small remuneration for their work in making the daily seawater observations. Daily water temperature observations at 0800 hours are made at New Westminster, B.C., by Department of Fisheries personnel.

## Procedure of observations

The observer takes the daily observation one hour prior to the time of the high tide occurring in the day-time as determined from the Tide Tables (Canadian Hydrographic Service, 1963), or at a more convenient time when the highest water level can be attained. There are two locations where the observation time is determined in a different manner. At Race Rocks, the observation is made at the time of turning to ebb at Juan de Fuca Strait (Entrance) as listed in the Tide Tables, which is  $\frac{1}{2}$  hour later than the time of high water slack in Race Passage. The high tide generally occurs before the time of observation. At Cape Mudge, the observation is made at the time of high water slack in Discovery Passage, which is estimated to be  $\frac{1}{2}$  hour before the time of turning to ebb in Seymour Narrows as listed in the Tide Tables.

The seawater temperatures are measured with a mercury thermometer graduated in 0.5 F° intervals. It has an index scale accuracy of  $\pm 0.3$  F°. The thermometer is mounted in a metal protective case, which provides a well around the bulb of the thermometer. A 2-oz glass medicine bottle is used to obtain the seawater sample. The thermometer and sample bottle are attached to a sampling rod, and the observation is made at a depth of three feet. The bottle is sealed with a wax-impregnated cork and packed in a wooden case which holds 90 bottles. The time of observation and the water temperature are recorded on a log sheet. The salinity determinations are made at the Pacific Oceanographic Group base laboratory, using a conductivity salinometer.

The 1963 data volume

This report lists tabulations of daily seawater temperatures and salinities for each station. It is a continuation of a series of annual reports which present data since 1914. The stations are arranged in the report in a north to south order, as indicated in Table 1. Temperatures have been listed as reported, with no attempt to screen or eliminate observers' errors. The accuracy of individual temperature readings is estimated to be within 0.5°F. The salinity data are reported as they were determined from the salinometer readings, and only the most obviously erroneous minimum and maximum values, due probably to contamination of the water sample, have been screened from the tabulations. The analyses are considered to have an accuracy of  $\pm 0.02\%$  for a single determination of the sample (Strickland, MS, 1958).

Monthly means, grand monthly means for the whole period of observation, and 10-year monthly means of temperature and salinity are presented at the foot of each monthly column of the daily data listings. The grand and 10-year means are weighted to represent the full number of years by including interpolated values when a particular monthly mean is missing. Interpolation is made between the preceding and following months' mean values.

The differences between the individual monthly means and the 10-year means have been codified according to a classification system of numerical indices. The methods of computation are described in detail by Hollister (MS, 1964). The standard deviation of the 10 variates in the 10-year monthly mean is determined; this gives the limits of average conditions. The monthly mean of the tenth year in that period is given a classification index determined by the whole number of  $\frac{1}{2}$  standard deviation units contained in its difference from the 10-year mean. The standard deviation ( $\sigma$ ) and the classification index are listed at the foot of each monthly column. A plus index indicates a warmer or more saline difference, and a negative index indicates a colder or less saline difference. These classification indices can be used to group the monthly mean data into several classes, which indicate the degree of difference from average conditions. These classes are defined by:

- Indices of 0 to 1: average conditions
- Indices of 2 to 3: above or below average conditions
- Indices of 4 and higher: strongly above or below average conditions.

Monthly mean temperatures and salinities and the classification indices for the years prior to 1963 are summarized in another data report (Hollister, MS, 1964). 1963 was the tenth year of observation at East Point, and a summarized table of monthly mean temperatures and salinities and their classification indices for the period 1954-1963 is presented at the end of this report.

A summary of the 1963 monthly mean temperatures and salinities and the classification indices is presented in Tables 2 and 3. Also listed in the tables are the differences from the 1962 means, and the monthly extremes of daily temperature and salinity observations. In the

△ 1963-1962 rows of values, a plus sign indicates that the 1963 temperature was warmer and the salinity was higher, and a negative sign indicates they were colder and lower.

In past data record volumes, annual graphs of the temperature and salinity data have been presented. These were plots of 7-day equally-weighted running averages of the daily data. These averages have not been computed for the 1963 data, so the graphs cannot be presented. It is proposed to resume the preparation of these annual graphs using the facilities of a computer to obtain a 7-day normally-weighted running average (Holloway, 1958), rather than an equally-weighted average.

### Acknowledgements

We are deeply indebted to the observers who have made these continuous daily observations, often during stormy and adverse weather conditions. The assistance and cooperation received from the District Marine Agents at Victoria and Prince Rupert, B.C., has contributed much to the success of this project. The Radio Branch of the Department of Transport has provided excellent service in transmitting radio messages to the light-stations.

The author was assisted in the analyses of the 5,000 salinity samples by Miss Marguerite Ott, Messrs. J.H. Meikle, J.F. Wickett, J. Wong, B. Olund and M. Best.

### References

- Canadian Hydrographic Service, 1963. Pacific Coast Tide and Current Tables, 1963. Marine Sciences Branch, Department of Mines and Technical Surveys, Ottawa. 262 pp.
- Hollister, H.J. MS, 1964. Classification of monthly mean sea surface temperatures and salinities at shore stations along the British Columbia and adjacent American coasts. 1915-1962. Fish. Res. Bd. Canada, MS Rept. Oceanogr. and Limnol., No. 177. 123 pp.
- Holloway, Jr., J. Leith. 1958. Smoothing and filtering of time series and space fields. Advances in Geophysics, Vol. 4, Academic Press Inc., New York. Pp. 351-389.
- Strickland, J.D.H. MS, 1958. Standard methods of seawater analyses. Volume II. Fish. Res. Bd. Canada, MS Rept. Oceanogr. and Limnol., No. 82. 323 pp.

Summary of errata in all annual volumes

These errata notes include all previous notes published in earlier data records as well as any additional errata that have been discovered. In some instances, earlier errata notes have been deleted or modified.

Vol. I, 1914-35:

- p. 18: delete the October 26 temperature value, and change the October 1925 monthly mean to 48.6.
- p. 29: May mean temperature is 49.8, change the 1921-31 mean to 48.5.

Vol. II, 1935-37:

- p. 74: delete November and December means because of insufficient number of daily values.
- p. 107: July 1936 mean is 62, 1927-36 mean is 60.

Vol. III, 1938-39:

- p. 12: delete July mean temperature because of insufficient daily values, deleted 1934-39 mean.
- p. 42: March 2 salinity is 29.29.
- pp. 54-61: Cape St. James temperature data for 1938 and 1939 are questionable because of probable errors in reading the thermometers. These data should be disregarded.

Vol. IV, 1940-41:

- pp. 51-58: chronological order of data in Cape St. James pages are reversed, delete temperature data for January to April and October to December 1940 because of questionable accuracy of readings, also delete February to October 1941 data.

Vol. V, 1942-43:

- p. 105: August mean temperature is 66.9, delete 1927-42 and 1933-42 means.

Vol. VI, 1944-45:

- p. 36: July 11 temperature is 50.3.
- p. 103: August mean temperature is 62.6, and September mean is 60.9, delete 1927-44 and 1935-44 means.

Vol. VII, 1946-47:

- p. 47: June 1937-46 mean temperature is 56.5.
- p. 57: June 1937-47 mean temperature is 56.4.
- p. 61: October mean salinity is 32.38, delete 1934-47 and 1938-47 means.
- p. 69: October mean temperature is 51.6, delete 1940-47 mean.

Vol. VIII, 1948:

- p. 8: July 1934-48 mean is 55.1.
- p. 15: June 1935-48 mean is 53.7.
- p. 27: June 1937-48 mean is 56.4.

Vol. IX, 1949:

- p. 20: July 24 temperature is 51.6.
- p. 27: June 1937-49 mean temperature is 55.4, and June 1940-49 mean is 58.6.
- p. 30: delete March 11 salinity and density values, change the March mean salinity to 32.41, delete 1949 mean density and 1935-49, 1940-49 means.
- p. 31: delete May 25 salinity and density values, change the May mean salinity to 32.59, delete 1949 mean density and 1935-49, 1940-49 means.
- p. 32: delete July 17 and 18 salinity and density values, change the July mean salinity to 32.31, delete 1949 mean density and 1935-49, 1940-49 means.

Vol. X, 1950:

- p. 26: June 1937-50 mean is 55.5 and 1941-50 mean is 56.1.
- p. 29: January mean salinity is 32.29, 1935-50 mean is 32.34 and 1941-50 mean is 32.31.
- p. 37: delete February 11 and 21 salinity values, change the February mean to 31.60, delete the 1937-50 and 1941-50 means.
- p. 49: November mean density is 1.0225.

Vol. XI, 1951:

- p. 29: delete January 16, 18, 20, 28, 29 salinity values, change January mean salinity to 32.33, delete 1935-51 and 1942-51 means.
- p. 35: September mean salinity is 32.26, delete 1940-51 mean, 1942-51 mean is 32.26.
- p. 36: November mean salinity is 32.20, 1940-51 mean is 32.11, 1942-51 mean is 32.12.

Vol. XII, 1952:

- p. 24: October 24 temperature is 50.5, change October mean to 54.5 and the 1943-52 mean to 52.2.

Vol. XIII, 1953:

- p. 14: December mean temperature is 48.7, 1935-53 mean is 47.3, and 1944-53 mean is 47.0.
- p. 29: October 1944-53 mean temperature is 52.0.
- p. 46: delete April 9 and 10 temperature values, change April mean temperature to 46.2, 1934-53 mean to 45.5.

Vol. XV, 1955:

- p. 27: collective mean period is 1954-55.
- p. 84: December mean salinity is 30.32.

Vol. XVI, 1956:

- p. 6: delete June 7 to 14 incl. temperature values, change June mean temperature to 50.0, delete 1935-56 and 1947-56 means.

Vol. XVII, 1957, MS Rept. No. 23:

- p. 91: delete 1938 and 1939 temperature data.
- p. 92: change October 1947 salinity to 32.38.
- p. 94: change September 1951 salinity to 32.26, and November 1951 salinity to 32.20.
- p. 99: change July 1936 temperature to 62.4, August 1942 to 66.9, August 1944 to 62.6, and September 1944 to 60.9.

Vol. XVIII, 1958, MS Rept. No. 48:

- p. 6: April 1949-58 mean temperature is 47.8.
- p. 9: complete records were found, and a replacement page is attached to the errata note published in December 1962, and is included in Vol. XX, 1960.
- p. 10: salinity values for April 1 and 2 are 29.49 and 29.68, respectively, change April mean salinity to 29.91, and 1949-58 mean to 30.14.
- p. 28: salinity values for December 22 to 31 incl. are to be deleted as questionable, because of interference to salinometer determinations by the presence of H<sub>2</sub>S in the samples, delete 1958 mean and 1954-58 mean.

Amphitrite Point salinity graph: the plot should continue as a smooth slope from May 14 to 16.

Vol. XIX, 1959, MS Rept. No. 67:

- p. 25: February 23 salinity value is 28.13.
- p. 27: September 1950-59 mean temperature is 54.8.
- p. 29: January 1935-59 mean salinity is 29.37, 1950-59 mean is 29.44, February 1935-59 mean salinity is 29.51, 1950-59 mean is 29.31, March 1935-59 mean temperature is 46.0, 1950-59 mean is 45.5, March 1935-59 mean salinity is 29.90, 1950-59 mean is 29.85.

Departure Bay temperature graph scales are incorrectly placed, a new replacement page is included in Vol. XXI, MS Rept. No. 131.

Classifications, 1915-1959, MS Rept. No. 68:

- p. 10: June 1956 mean temperature is 50.00.
- p. 15: change June 1956 line to 52.05, -02.04, 01.14; June 1957 line to 51.89, 00.81, 0090; June 1958 line to 52.27, 04.43, 01.70; June 1959 line to 52.54, 01.26, 01.70.
- p. 30: March 1958 mean temperature is 48.30.
- p. 31: January, February, March, April mean salinities are 27.95, 28.77, 29.20, 29.91, respectively.
- p. 35: change the March 1958 line to 45.29, 03.01, 01.30, 4.
- p. 36: change the March 1959 line to 45.48, 00.82, 01.30.

- p. 40: change the January 1958 line to 29.60, -01.64, 00.87, -3; the February line to 29.41, -00.63, 00.88, -1; the March line to 29.98, -00.77, 00.66, -2; April  $\Delta$  to -00.15.
- p. 41: change the January 1959 line to 29.44, -00.82, 00.89, -1; the February line to 29.31, 00.47, 00.76, 1; the March line to 29.85, -00.96, 00.73; the April line to 30.11, -00.10, 00.69.
- pp. 50-56: July 1936 temperature is 62.4, August 1942 is 66.9, August 1944 is 62.6, September 1944 is 60.9, corrected pages 50-56 are included in Vol. XXI, MS Rept. No. 131.
- p. 121: October 1947 salinity is 32.38.
- p. 127: change the October 1947 line to 32.43, -00.04, 00.11, -1; the October 1948 line to 32.41, -00.11, 00.11, -2; the October 1949 line to 32.42, -00.01, 00.11; the October 1950 line to 32.37, -00.45, 00.19; the October 1951 line to 32.37, 00.12, 00.19, 1; the October 1952 line to 32.35, -00.05, 00.18.
- p. 128: change the October 1953 line to 32.33, -00.05, 00.18; the October 1954 line to 32.29, -00.18, 00.18, -2; the October 1955 line to 32.22, -00.28, 00.18, -3; the October 1956 line to 32.22, -00.09, 00.18.
- p. 130: September, October, November 1958 interpolated temperatures are 53.30, 51.20, 49.10, respectively.
- p. 131: September 1951 salinity is 32.26.
- p. 134: change the September 1958 line to 52.71, -00.58, 01.67, +0, the October line to 50.73, +00.47, 00.90, +1; the November line to 47.61, 01.49, 01.75, +1.
- p. 135: change the September 1959 line to 52.62, -00.21, 01.66; the October line to 50.73, -00.12, 00.90; the November line to 47.49, -00.38, 01.74.
- p. 137: change the September 1951 line to 32.26, 00.00, 00.29, 0; the September 1952 line to 32.20, 00.01, 00.22.
- p. 138: change the September 1953 line to 32.13, -00.23, 00.20, -2; the September 1954 line to 32.12, 00.14, 00.19; the September 1955 line to 32.11, 00.18, 00.17, 2; the September 1956 line to 32.15, -00.02, 00.11, -0; the September 1957 line to 32.16, 00.13, 00.12, 2; the September 1958 line to 32.17, 00.05, 00.13.
- p. 139: change the September 1959 line to 32.15, -00.29, 00.13, -2.

Vol. XX, 1960, MS Rept. No. 104:

- p. 80: Departure Bay temperature graph scales are incorrectly placed, a replacement page is included in Vol. XXI, MS Rept. No. 131.
- p. 85: Pine Island salinity graph scale is incorrectly placed, a replacement page is included in Vol. XXI, MS Rept. No. 131.

Vol. XXI, 1961, MS Rept. No. 131:

- p. 7: delete the February 11 salinity value, change the February mean salinity to 26.62, the 1935-61 mean to 28.64, the 1952-61 mean to 28.46; and  $\sigma$  to 1.03.
- p. 8: June mean temperature  $\sigma$  is 1.73.

Vol. XXII, 1962, MS Rept. No. 161:

- p. 31: April 23 and 24 salinity values are 28.99 and 28.98, respectively.
- p. 34: February 1935-62 mean salinity is 28.65, 1953-62 mean is 28.60,  $\sigma$  is 0.97.

Classifications, 1915-1962, MS Rept. No. 177:

- p. 50: October 1947 mean salinity is 32.38.
- p. 60: May 1954 mean temperature is 49.30.
- p. 62: February 1961 mean salinity is 26.62, 1943-62 mean is 28.56, 1938-62 mean is 28.56, 1935-62 mean is 28.65.

Table 1. Locations of stations, and page index of tabulations of daily observations

Stations	Locations		1963 Observers	Page No.
	Latitude(N)	Longitude(W)		
Langara Island, Dixon Entrance	54°15'	133°03'	J.M. Hartt (Miss) R.A. Smith	20
Triple Island, Brown Passage	54°18'	130°53'	D.H. Franklin L.M. Clifford	24
Bonilla Island, Hecate Strait	53°30'	130°38'	L.A. MacArthur (Mrs.)	28
McInnes Island, Milbanke Sound	52°16'	128°43'	E. Brown T.M. Anderson	32
Cape St. James, Queen Charlotte Islands	51°56'	131°01'	R.O. Duffy D.B. Jones	36
Pine Island, Queen Charlotte Strait	50°59'	127°44'	E.D. Brown (Mrs.)	40
Kains Island, Quatsino Sound	50°26'	128°02'	R.H.W. Collins	44
Amphitrite Point, Barkley Sound	48°55'	125°32'	Barclay Stuart	48
Cape Mudge, Strait of Georgia	50°00'	125°12'	C.W.A. Egg	52
Chrome Island, Strait of Georgia	49°28'	124°41'	E. Bruton (Mrs.)	56
Entrance Island, Strait of Georgia	49°13'	123°48'	H.S. Whalen V.E. Emrich (Mrs.)	60
Departure Bay, Strait of Georgia	49°13'	123°57'	F.R.B. personnel	64
East Point, Boundary Pass	48°47'	123°03'	J.P. Fletcher (Mrs.)	68
Race Rocks, Juan de Fuca Strait	48°18'	123°32'	A.C. Rogers (Mrs.)	72
Fraser River, New Westminster, B.C.	49°12'	122°57'	Dept. of Fisheries personnel	76



Figure 2. The landing cove at Langara Island at low tide. The observations are taken from the concrete pier shown in the centre of the photo.



Figure 3. A portion of the shoreline at Bonilla Island. The observations are taken from the rocks shown in the centre of the photo.

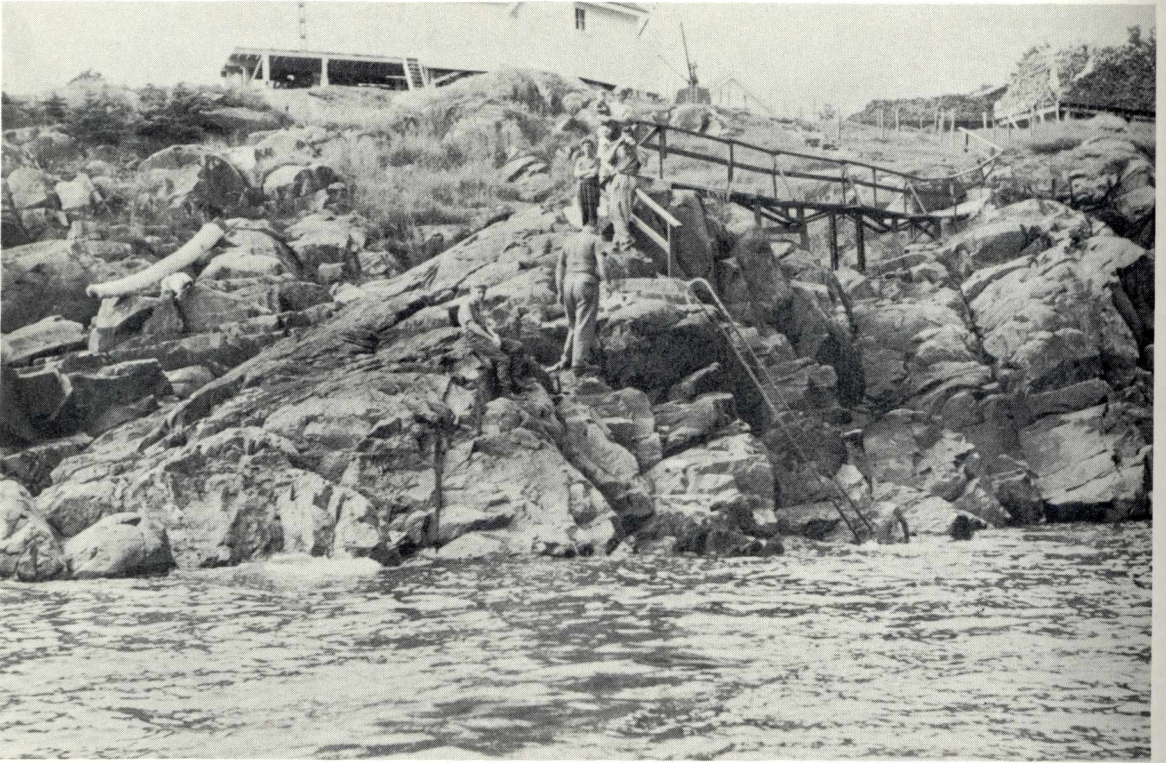


Figure 4. A view of the rocky shoreline at Pine Island. The observations are taken from the ledge alongside the ladder.



Figure 5. The daily observations at Amphitrite Point are taken in this narrow, rocky gully.



Figure 6. The landing cove at Entrance Island at low tide. The observer usually stands on the ledge at the top of the ladder. Mr. H. Whalen demonstrates the use of a 16-foot aluminum sampling rod.



Figure 7. The daily seawater observations at Race Rocks are taken from this stone jetty which is almost covered at high tide.

Table 2. Monthly mean seawater temperatures (°F), classifications, differences from 1962 temperatures, and monthly extremes

1963

Station		Jan	Feb	Mar	Apr	May	Jun	Jul	Aug	Sep	Oct	Nov	Dec
Langara I.	°F	44.8	45.5	44.9	45.8	48.5	50.5	52.9	53.5	56.5	53.2	47.3	46.2
Classification		+1	+3	+2	+1	+2	+2	+2	+2	+4	+4	-0	+1
Δ1963-1962		+1.4	+2.8	+2.3	+1.3		+2.5	+1.8	+1.3	+4.3	+1.4	-1.3	-0.2
Maximum		46.7	46.7	46.5	47.7	50.7	52.2	54.6	57.0	58.8	56.8	50.4	47.4
Minimum		42.7	43.8	43.5	44.6	46.7	49.3	50.7	51.6	52.0	50.0	42.1	43.0
Triple I.	°F	45.5	45.5	45.0	46.2	48.9	52.2	55.1	55.8	55.7	53.3	48.5	47.3
Classification		+1	+2	+2	+1	+1	+0	+1	+1	+3	+5	+1	+1
Δ1963-1962		+3.0	+3.8	+3.2	+2.3	+2.7	+2.3	+2.4	+1.1	+2.5	+2.7	-0.9	+0.2
Maximum		47.2	46.5	45.8	48.0	52.5	54.5	57.6	58.5	58.0	54.5	52.1	49.0
Minimum		44.7	44.5	43.0	44.0	45.7	49.8	53.5	53.0	53.0	51.5	44.0	45.3
Bonilla I.	°F	44.5	45.6	45.3	46.6	50.0	52.2	52.9	53.6	55.1	53.4	48.8	46.8
Δ1963-1962		+2.4	+3.2	+3.6	+1.9	+2.4	+1.7	+1.4	+0.3	+2.7	+2.5	+0.1	+0.1
Maximum		46.5	46.7	46.5	49.0	54.0	54.3	55.6	57.5	57.0	55.0	52.0	48.7
Minimum		41.0	43.5	44.5	44.0	46.0	50.0	51.6	52.0	51.5	51.0	44.0	45.0
McInnes I.	°F	45.2	45.7	45.6	46.8	50.1	52.9	56.0	56.9	57.3	53.6	49.4	46.9
Δ1963-1962		+2.3	+2.8	+3.1	+2.0	+2.3	+1.3	+2.2	+0.9	+2.4	+2.4	-0.3	+0.3
Maximum		47.9	47.0	46.2	48.2	55.1	55.1	58.6	60.1	59.6	56.0	52.9	48.5
Minimum		43.0	44.3	45.1	45.5	47.5	51.8	53.3	54.3	55.7	49.7	47.0	45.5
Cape St. James	°F	46.5	46.5	46.4*	46.6	48.8	50.9	54.3	56.9	54.0	52.4*	50.5	48.7
Classification		+1	+2	+2	+2	+3	+0	+0	+2	+0	+3	+3	+3
Δ1963-1962		+1.9	+2.4	+3.2	+2.0	+2.2	+1.8	+2.3	+3.5	-0.1	+2.8	+1.5	+0.6
Maximum		47.7	47.2	46.9	48.1	50.7	53.1	57.4	58.2	57.6	55.5	52.4	49.4
Minimum		44.9	45.3	45.4	45.7	46.9	48.6	52.5	55.4	51.0	50.0	48.3	48.0

\* C.S.J. 13 daily observations

Table 2. Monthly mean seawater temperatures (°F), classifications, differences from 1962 temperatures, and monthly extremes

1 9 6 3

Station		Jan	Feb	Mar	Apr	May	Jun	Jul	Aug	Sep	Oct	Nov	Dec
Pine I.	°F	46.5	46.3	46.0	47.0	48.9	49.5	50.2	50.8	51.5	53.8	49.9	47.9
Classification		+2	+2	+1	+2	+2	+1	+1	+1	+3	+5	+2	+2
Δ1963-1962		+1.9	+1.4	+1.6	+1.3	+1.7	+1.1	+0.2	+1.0	+2.6	+3.4	+0.4	+0.1
Maximum		48.4	47.2	46.8	47.9	49.9	50.6	51.6	52.6	55.6	56.9	51.6	49.8
Minimum		45.0	45.4	45.4	45.4	47.4	48.6	48.6	49.4	49.3	50.9	47.4	46.7
Kains I.	°F	47.4	47.4	46.8	48.6	51.6	53.1	55.5	57.2	59.9	56.2	51.0	49.7
Classification		+2	+2	+1	+1	+2	+0	+1	+2	+4	+5	+2	+2
Δ1963-1962		+2.7	+2.1	+1.5	+0.8	+2.1	+0.2	+1.3	+2.0	+6.0	+3.6	+0.2	+1.3
Maximum		48.9	48.5	48.2	51.9	56.0	57.0	59.1	59.5	62.1	59.5	52.6	51.2
Minimum		44.8	46.1	45.3	46.5	48.3	50.7	52.8	53.7	58.2	50.1	48.8	47.9
Amphitrite Pt.	°F	46.6	47.8	47.4	50.2	53.5	52.4	56.3	57.6	57.8	56.0	52.4	49.9
Classification		+0	+1	+1	+2	+2	-0	+0	+2	+3	+4	+1	+2
Δ1963-1962		+1.8	+1.7	+1.7	+1.2	+2.4	+0.5	+4.1	+2.0	+2.3	+1.1	-1.2	-0.7
Maximum		49.3	48.7	48.4	52.0	55.5	55.2	58.5	59.0	58.8	57.5	53.3	51.7
Minimum		44.1	44.3	46.4	47.6	51.3	50.2	53.0	55.3	57.0	53.0	51.4	49.1
Cape Mudge	°F	45.9	46.4	47.2	48.3	51.3	54.7	58.6	58.5	57.8	53.1	48.9	46.9
Classification		+2	+1	+3	-0	-1	-1	+1	+2	+4	+4	+2	+2
Δ1963-1962		+1.8	+0.7	+1.2	+0.6	-0.6	+0.1	+2.0	+1.1	+4.2		-0.1	-0.1
Maximum		47.4	48.2	49.4	52.2	60.6	63.5	65.7	65.7	61.6	56.7	50.0	48.1
Minimum		42.8	44.4	45.5	46.8	47.7	49.5	53.5	51.0	53.7	49.2	45.0	45.0
Chrome I.	°F	44.7	46.0	46.4	48.5	54.2	58.8	60.2	64.0	58.7	52.8	47.4	45.9
Δ1963-1962		+0.5	+1.1	+1.9	+1.1	+0.7	+0.6	-3.5	+4.9	-0.3	+1.4	-1.9	-0.5
Maximum		46.0	47.2	48.4	52.5	61.0	65.7	66.1	72.0	64.6	56.0	50.5	47.5
Minimum		42.8	43.1	44.6	46.0	48.5	54.0	54.2	57.0	54.5	50.5	42.0	43.3

Table 2. Monthly mean seawater temperatures (°F), classifications, differences from 1962 temperatures, and monthly extremes

1 9 6 3

Station		Jan	Feb	Mar	Apr	May	Jun	Jul	Aug	Sep	Oct	Nov	Dec
Entrance I.	°F	43.1	45.5	46.6	48.8	55.8	60.0	61.9	64.2	61.3	54.5	48.8	46.5
	Classification	-2	+2	+2	+1	+1	+1	-0	+1	+4	+4	+1	+1
	Δ1963-1962	-0.4	+1.3	+1.9	+0.5	+2.7	+1.3	-0.9	+4.3	+2.1	+2.9	-0.5	+0.5
	Maximum	46.8	47.8	48.2	53.0	66.0	67.0	66.3	68.0	67.3	60.0	50.7	49.4
	Minimum	36.4	41.2	45.2	46.7	49.0	55.2	55.8	58.0	55.0	50.3	46.2	43.0
Departure Bay	°F	43.1	44.9	45.8	49.0	55.3	59.7	62.4	63.7	60.0	53.6	47.3	45.1
	Classification	-0	+2	+2	+0	+0	+0	-1	+0	+2	+3	-0	+1
	Δ1963-1962	+0.2	+0.9	+1.5	+0.4	+2.4	+0.2	-0.8	+2.9	+0.2	+2.5	+0.9	-0.2
	Maximum	46.4	46.5	48.5	53.7	64.0	65.7	67.5	68.2	66.0	57.8	49.5	49.0
	Minimum	39.6	40.0	44.3	45.7	49.1	56.0	56.3	57.2	53.6	48.3	44.4	42.9
East Point	°F	45.8	45.8	46.3	47.2	49.7	51.6	53.4	53.6	52.8	50.7	49.6	47.6
	Classification	+1	+2	+3	+1	+1	+1	+0	+1	+1	+1	+2	+1
	Δ1963-1962	+0.2	+0.4	+1.3	+0.5	+1.2	+0.4	+0.1	+0.8	-0.3	+0.3	+0.2	-0.2
	Maximum	47.6	46.3	46.7	48.2	52.4	57.1	60.3	59.0	57.7	52.4	50.3	48.7
	Minimum	42.8	44.6	45.8	46.4	47.7	50.0	50.9	51.2	51.1	50.0	48.3	45.6
Race Rocks	°F	45.6	45.6	46.2	47.3	49.4	50.4	50.9	51.5	51.1	50.6	49.9	47.8
	Classification	+0	+0	+1	+0	+1	+0	-0	+0	+1	+3	+3	+2
	Δ1963-1962	+0.6	+0.4	+0.9	+0.2	+0.6	+0.3	+0.1	+0.6	+0.0	+0.5	+1.0	+0.0
	Maximum	47.1	46.3	47.0	48.6	50.8	52.5	54.0	54.0	52.2	52.0	50.9	48.8
	Minimum	43.3	43.9	45.0	46.0	47.2	49.0	49.6	50.0	49.6	48.5	48.7	46.8
Fraser River	°F	37.7	39.5	40.8	44.7	51.2	55.6	60.1	64.4	62.6	53.9	44.7	39.6
	Classification	-0	+1	+0	+0	+1	+0	-0	+1	+4	+4	+1	-0
	Δ1963-1962	-0.5	+0.4	+1.6	+0.0	+1.8	+1.2	+0.9	+2.6	+3.8	+1.9	-0.8	-1.6
	Maximum	42.9	41.5	44.7	49.2	55.6	58.5	61.7	67.5	65.9	59.7	47.5	42.5
	Minimum	32.9	33.9	37.5	42.7	43.0	50.9	56.6	61.0	59.2	47.5	40.6	37.2

Table 3. Monthly mean seawater salinities (‰) for 1963, classifications, differences from 1962 temperatures, and monthly extremes

Station		Jan	Feb	Mar	Apr	May	Jun	Jul	Aug	Sep	Oct	Nov	Dec
Langara I.	‰	32.13	32.12	32.01	32.06	31.96	31.94	32.28	32.30	32.01	31.98	31.77	31.96
Classification		+0	+0	-1	+0	-1	-4	+2	+4	+2	-1	-2	-0
Δ1963-1962		+0.19	+0.10	-0.34	-0.10	-0.37		-0.04	+0.28	-0.03	-0.05	-0.17	+0.05
Maximum		32.55	32.52	32.53	32.34	32.39	32.24	32.58	32.56	32.36	32.21	32.18	32.14
Minimum		31.12	31.67	31.46	31.60	30.35	30.33	32.02	30.96	31.71	31.70	30.31	31.35
Triple I.	‰	31.16	31.29	31.28	31.61	31.17	29.42	28.80	29.38	31.00	31.59	31.22	31.29
Classification		-2	-0	-3	-1	+0	+0	+0	-1	+1	+1	-1	-2
Δ1963-1962		-0.62	-0.35	-0.56	-0.27	-0.48	-0.69	+1.06	+1.35	+0.25	-0.18	-0.22	-0.10
Maximum		31.43	31.53	31.52	31.75	31.73	31.46	31.51	31.97	31.78	31.81	31.73	31.52
Minimum		30.84	31.01	30.33	31.46	27.75	25.21	23.36	26.40	28.65	30.25	29.78	31.10
Bonilla I.	‰	30.88	31.05	31.35	31.48	31.55	31.52	31.70	31.74	31.56	31.40	30.93	30.88
Δ1963-1962		-0.71	-0.50	-0.33	-0.27	-0.36	-0.13	-0.10	+0.43	-0.17	-0.13	-0.22	-0.18
Maximum		31.19	31.33	31.71	31.73	31.83	31.81	31.88	32.13	32.08	31.84	31.38	31.32
Minimum		30.39	30.48	30.78	30.75	31.13	30.92	31.24	31.01	30.88	31.04	30.34	30.10
McInnes I.	‰	29.42	30.24	30.45	30.80	31.08	31.23	30.56	31.04	30.59	29.34	29.19	29.74
Δ1963-1962		-1.06	+0.69	-0.84	-0.75	-0.12	+0.21	-0.52	+0.02	+0.05	-0.39	-0.39	+0.74
Maximum		30.70	30.89	31.28	31.51	31.73	31.64	31.16	31.39	31.34	31.38	31.26	30.56
Minimum		27.57	29.54	29.35	30.11	29.98	30.54	29.12	30.57	28.84	26.55	26.98	28.60
Cape St. James	‰	32.01	31.96	31.93	32.03	32.10	32.11	32.04	31.77	32.01	32.18*	32.05	31.97
Classification		-0	-0	-0	-1	-0	-0	-0	-3	+0	+3	+0	-0
Δ1963-1962		-0.41	-0.25	-0.14	-0.27	-0.15	-0.10	-0.16	-0.29	-0.10	-0.21	-0.19	-0.02
Maximum		32.22	32.14	32.14	32.41	32.29	32.29	32.29	32.13	32.46	32.44	32.23	32.23
Minimum		31.80	31.83	31.69	31.90	31.59	31.46	31.71	31.30	31.23	31.42	31.89	31.86

\*C.S.J. 13 daily observations

Table 3. Monthly mean seawater salinities (‰) for 1963, classifications, differences from 1962 temperatures, and monthly extremes

Station		Jan	Feb	Mar	Apr	May	Jun	Jul	Aug	Sep	Oct	Nov	Dec
Pine I.	‰	30.97	31.21	31.51	31.62	31.53	31.75	31.65	31.65	31.85	31.69	31.11	30.93
Classification		-2	-0	+0	+0	-1	-0	-1	-1	-0	-2	-3	-2
Δ1963-1962		-0.49	-0.20	-0.37	-0.37	-0.42	-0.33	-0.40	-0.27	-0.16	+0.03	-0.34	+0.17
Maximum		31.63	31.55	31.79	31.78	31.81	32.02	32.04	32.00	32.17	31.93	31.32	31.25
Minimum		30.56	30.40	31.23	31.36	31.08	31.46	31.27	31.06	31.51	31.34	30.86	27.38
Kains I.	‰	28.92	28.84	29.77	30.30	29.88	31.28	31.44	31.93	30.94	28.77	27.49	28.55
Classification		-0	-1	-0	+0	-2	+0	-1	+0	-2	-2	-3	+0
Δ1963-1962		+0.25	-0.65	-1.29	-0.21	-0.43	-0.17	+0.26	+0.07	-1.27	-1.35	-0.82	+3.30
Maximum		31.03	31.07	31.17	30.95	31.07	32.09	32.10	32.26	31.93	31.28	29.67	30.15
Minimum		25.34	24.69	26.57	29.54	26.75	30.61	29.57	31.58	27.69	23.70	25.13	23.52
Amphitrite Pt.	‰	29.08	28.48	29.14	28.59	30.39	31.62	30.59	31.26	31.04	29.19	27.77	27.12
Classification		-1	-0	+0	-1	+0	+2	-0	+1	+2	-0	-2	-1
Δ1963-1962		+1.56	-0.27	-1.45	-1.26	+0.57	+0.30	-1.37	+0.26	+0.07	+0.72	-0.50	-1.02
Maximum		30.82	30.12	29.85	30.97	31.60	31.95	31.53	31.67	31.50	30.67	29.47	29.21
Minimum		23.67	26.01	26.50	26.33	27.75	30.99	25.74	30.72	29.55	22.92	25.84	25.84
Cape Mudge	‰	28.77	28.73	29.13	29.28	29.14	28.61	26.61	27.56	27.70	28.28	28.23	28.42
Classification		+1	-0	+0	+0	-0	+2	-1	+0	-1	-2	-1	-0
Δ1963-1962		-0.19	-0.70	-0.70	-0.72	-0.50	+0.24	-0.14	+0.63	-0.97		+0.14	+0.81
Maximum		29.33	29.46	29.75	29.66	29.79	29.67	28.62	29.96	28.61	29.35	29.15	29.16
Minimum		28.21	27.67	28.08	28.76	28.24	25.28	25.13	26.62	26.58	27.36	27.35	27.12
Chrome I.	‰	27.22	28.00	28.40	28.52	27.83	27.68	26.04	26.61	27.76	28.59	27.88	27.54
Δ1963-1962		-1.54	-0.64	-0.64	-0.95	-0.78	+0.75	+0.98	-0.12	+0.66	+0.37	-0.02	+1.50
Maximum		28.41	28.78	29.34	29.98	29.07	28.51	27.91	27.70	28.83	29.09	28.53	28.41
Minimum		18.14	24.02	26.79	26.65	25.71	26.17	22.49	24.95	26.64	26.97	26.61	24.72

Table 3. Monthly mean seawater salinities (‰) for 1963, classifications, differences from 1962 temperatures, and monthly extremes

Station		Jan	Feb	Mar	Apr	May	Jun	Jul	Aug	Sep	Oct	Nov	Dec
Entrance I.	‰	26.17	26.45	27.70	27.87	26.72	24.97	22.28	23.53	24.94	26.68	27.08	27.10
Classification		-3	-2	-1	-0	+0	+1	-1	-0	-1	-1	-0	-1
Δ1963-1962		-0.87	-0.74	-0.95	-0.83	+0.46	-0.40	-0.44	-1.16	-0.86	-0.93	-0.63	+1.43
Maximum		28.07	29.25	29.48	29.02	28.88	28.48	28.29	27.39	28.51	29.42	28.92	29.66
Minimum		23.13	20.57	25.06	25.12	23.81	18.11	17.66	17.86	20.20	22.15	24.80	25.17
Departure Bay	‰	26.06	24.72	26.71	26.45	26.34	24.82	21.80	24.00	25.44	25.00	25.46	24.12
Classification		+0	-1	-0	-2	+0	+2	-0	+0	-0	-4	-1	-3
Δ1963-1962		-0.82	-2.37	-1.36	-2.05	+1.30	+1.45	+0.23	-0.40	-0.01	-2.10	+0.37	-0.16
Maximum		27.66	27.13	28.97	28.12	27.71	27.54	26.86	27.03	28.53	27.55	27.16	27.48
Minimum		21.90	18.95	22.39	22.09	23.87	20.03	17.58	21.01	22.23	20.82	23.10	13.11
East Point	‰	29.03	29.07	28.86	29.68	29.15	28.58	28.02	28.47	28.91	30.10	29.51	29.13
Classification		+1	+1	+0	+2	+1	+2	+2	+1	+2	+3	+1	+1
Δ1963-1962		-0.92	-0.54	-0.95	-0.49	-0.24	-0.08	+0.06	-0.49	+0.47	+0.98	-0.27	+0.05
Maximum		30.12	30.36	30.34	30.19	30.22	30.27	30.07	30.14	29.97	30.55	30.46	30.20
Minimum		26.81	27.21	26.22	28.88	26.01	20.48	21.87	20.15	25.03	29.49	26.57	25.52
Race Rocks	‰	30.77	30.97	31.02	31.09	31.18	31.27	31.17	31.18	31.36	31.34	31.04	30.81
Classification		-0	+0	-0	-0	-0	+1	+2	+1	+2	+1	-0	-0
Δ1963-1962		-0.45	-0.33	-0.47	-0.57	-0.26	-0.25	-0.11	-0.13	+0.30	-0.15	-0.09	+0.08
Maximum		31.69	31.80	31.87	31.54	31.82	31.81	31.71	31.95	32.01	32.37	31.59	31.07
Minimum		30.23	30.01	30.33	30.76	30.74	30.75	29.46	29.02	30.76	30.33	30.45	30.44

Langara Island, Dixon Entrance

Day of Month	January, 1963		February, 1963		March, 1963	
	Water Temp. °F	Salinity ‰	Water Temp. °F	Salinity ‰	Water Temp. °F	Salinity ‰
1					46.5	31.98
2	45.6	32.07			46.0	31.79
3					45.5	31.85
4	46.5	31.75	44.5	32.25	46.0	31.64
5	46.0	31.12	43.8	32.17	46.0	31.94
6	46.7	32.16			45.4	32.07
7	44.8	31.65	45.3	32.29	45.0	31.74
8			45.5	32.33	44.9	31.81
9	43.5	31.84	44.9	32.36	43.5	32.51
10	41.3	31.85	45.7	32.31	44.8	32.21
11			45.4	32.39	44.0	31.91
12	45.3	32.55			45.0	32.15
13	45.6	32.21	45.6	32.40	45.0	31.94
14					44.5	32.01
15	45.4	32.31			45.0	32.00
16			45.7	31.93		
17			46.0	32.52		
18	44.3	32.40	45.8	32.27	45.0	31.74
19						
20	44.5	32.18	46.7	31.96	44.3	31.46
21	45.5	32.27	46.7	31.93	44.4	31.97
22	45.3	32.14			43.7	31.74
23	45.0	32.22	46.0	31.81		
24	45.3	32.30	46.0	31.89	44.0	32.41
25	45.0	32.12	45.5	31.90		
26	45.0	32.33	45.3	31.77	44.5	32.39
27	44.8	32.25	45.4	31.67	44.3	32.38
28					45.0	32.14
29						
30	42.7	32.53				
31	43.5	32.44			44.8	32.53
1963 Mean	44.8	32.13	45.5	32.12	44.9	32.01
1940-63	43.2	32.16	43.0	32.23	43.3	32.22
1954-63	43.5	32.09	43.2	32.11	43.2	32.15
σ	1.41	0.12	1.47	0.19	1.24	0.16
Class'n	+1	+0	+3	+0	+2	-1

Langara Island, Dixon Entrance

Day of Month	April, 1963		May, 1963		June, 1963	
	Water Temp. °F	Salinity ‰	Water Temp. °F	Salinity ‰	Water Temp. °F	Salinity ‰
1	44.7	32.13	46.7	30.35		
2	44.8	32.07			49.8	31.24
3	44.7	32.06	47.2	32.12	50.0	31.26
4	44.6	32.07	48.5	32.20	50.5	32.13
5			47.0	32.23	49.8	31.97
6					49.8	32.15
7	44.6	31.74	47.3	32.03	49.3	32.11
8	44.7	31.74	48.0	32.07	49.8	32.11
9	46.7	32.20	48.5	32.29	49.7	31.89
10	46.0	32.17	47.7	32.39	49.9	32.06
11	46.3	32.17	48.3	32.24	51.0	31.99
12	46.4	32.16	50.3	32.23	49.8	32.13
13	45.8	31.97	47.8	31.91	49.7	32.19
14			47.8	32.05		
15	45.3	32.18			51.3	32.02
16	45.0	32.09	48.7	32.11	52.2	31.87
17			50.0	32.03		
18	44.7	31.86	50.7	32.06	51.7	30.33
19	45.7	31.93				
20	45.6	31.89	50.0	32.03	51.7	31.96
21	46.5	32.34	49.7	32.08		
22			48.7	30.72	50.4	32.20
23	46.0	32.09				
24	45.8	32.29	47.4	32.34	51.0	32.23
25	47.5	31.96				
26					50.7	32.21
27	46.4	32.32	50.0	32.24	50.5	32.24
28	46.8	32.27	49.0	32.01	51.0	32.17
29	46.9	31.60	48.3	32.15		
30	47.7	32.07			50.7	32.15
31			48.0	31.24		
1963 Mean	45.8	32.06	48.5	31.96	50.5	31.94
1940-63	44.8	32.20	47.2	32.24	49.6	32.26
1954-63	44.6	32.04	47.1	32.14	49.3	32.19
σ	1.57	0.35	1.38	0.38	1.09	0.13
Class 'n	+1	+0	+2	-1	+2	-4

Langara Island, Dixon Entrance

Day of Month	July, 1963		August, 1963		September, 1963	
	Water Temp. °F	Salinity ‰	Water Temp. °F	Salinity ‰	Water Temp. °F	Salinity ‰
1	51.4	32.15	53.2	32.07	52.0	32.36
2	53.0	32.03	54.6	32.17	52.2	31.88
3			53.6	32.29	54.0	31.97
4	51.9	32.24	54.0	32.39	55.2	31.94
5			55.0	32.38	56.2	31.99
6	53.8	32.35	54.2	32.43	56.0	32.12
7	53.0	32.02	54.0	32.35	57.6	32.21
8	52.4	32.03	54.6	32.35		
9			55.0	32.38	58.5	32.13
10			52.6	32.50	58.8	32.22
11	50.7	32.35	53.0	32.43	56.5	31.84
12	51.8	32.22	54.0	32.47	58.2	32.05
13	53.0	32.25	52.6	32.28	58.0	31.96
14	53.4	32.36	53.0	32.46		
15	53.3	32.27	53.0	32.39	57.6	32.12
16			54.0	32.29	57.4	32.16
17	52.0	32.31	53.0	32.43	55.5	31.81
18	51.7	32.15	53.2	32.43	55.1	32.33
19			53.6	32.55		
20	53.0	32.31	53.0	32.56	57.0	32.07
21	53.4	32.39	52.6	32.48	56.5	32.20
22			52.0	32.53	56.5	32.12
23	53.0	32.57	51.6	32.52	56.5	31.82
24	54.4	32.58	52.0	32.46	58.0	31.71
25	52.0	32.51	53.2	32.36	58.0	31.84
26	53.6	32.27	53.0	32.39	57.7	31.91
27	54.0	32.39	55.0	32.11	56.4	31.90
28	54.6	32.43	57.0	32.14	56.6	31.94
29	54.0	32.19	52.0	30.96	57.5	31.87
30	53.4	32.34	54.0	31.64	56.5	31.92
31	53.6	32.14	53.2	32.23		
1963 Mean	52.9	32.28	53.5	32.30	56.5	32.01
1940-63	52.1	32.13	52.8	32.22	52.7	32.21
1954-63	51.6	32.04	52.4	32.16	52.8	32.17
$\sigma$	1.17	0.22	0.96	0.07	1.87	0.11
Class'n	+2	+2	+2	+4	+4	+2

## Langara Island, Dixon Entrance

Day of Month	October, 1963		November, 1963		December, 1963	
	Water Temp. °F	Salinity ‰	Water Temp. °F	Salinity ‰	Water Temp. °F	Salinity ‰
1	56.8	32.04			47.0	32.10
2	54.5	31.78	49.0	31.98	47.1	32.10
3	53.5	31.90	50.4	31.83	47.1	32.14
4	54.0	32.05	49.8	31.89	47.1	32.09
5	53.0	32.11	49.6	31.99	46.0	31.99
6						
7	53.0	32.00	49.2	31.99	46.1	31.87
8	52.3	32.19				
9	53.4	32.04	49.3	31.92		
10	54.3	32.09	49.4	31.91	45.0	32.13
11	54.0	32.02	49.4	31.98	47.0	32.12
12			48.3	32.09	46.5	31.97
13	54.8	31.87	49.0	32.09	46.0	31.87
14	55.0	31.79	48.1	32.10	46.5	32.03
15	54.3	31.80			45.6	32.01
16	54.4	31.75	47.1	32.18		
17			46.3	31.77	43.1	32.02
18	53.0	32.10	43.1	31.18	43.0	32.04
19	52.4	32.18	42.1	31.14	46.5	31.74
20	52.4	32.14			46.5	31.68
21	52.4	32.03			46.0	31.78
22	52.4	32.02				
23	53.3	31.94				
24	53.6	32.00	43.0	30.31		
25	53.0	31.86			46.0	32.10
26	52.6	31.80				
27						
28	52.4	31.90	46.4	31.61	47.4	
29	52.0	31.70	43.6	31.42	46.4	32.01
30			46.1	32.02	46.2	31.81
31	51.5	32.02			47.0	31.35
	51.0	32.03	47.0	31.96	46.6	32.01
	50.0	32.21				
1963 Mean	53.2	31.98	47.3	31.77	46.2	31.96
1940-63	51.0	32.11	47.4	32.05	44.9	32.06
1954-63	50.9	32.04	47.6	31.99	45.0	32.00
σ	1.14	0.10	1.55	0.18	1.38	0.25
Class'n	+4	-1	-0	-2	+1	-0

Triple Island, Brown Passage

Day of Month	January, 1963		February, 1963		March, 1963	
	Water Temp. °F	Salinity ‰	Water Temp. °F	Salinity ‰	Water Temp. °F	Salinity ‰
1	45.5	31.28	44.5	31.25	45.5	31.46
2	45.5	31.43	44.7	31.25	44.0	31.42
3	45.4	31.31	44.5	31.17	43.0	31.22
4	46.1	31.05	44.6	31.01	45.0	31.32
5	47.0	31.25	44.7	31.03	45.0	31.36
6	47.2	31.28	45.5	31.21	44.0	31.36
7	46.0	31.08	45.4	31.09	45.5	31.16
8	45.8	31.04	46.2	31.26	44.8	30.33
9	45.5	31.29	46.2	31.27	45.0	30.51
10	45.0	31.30	46.0	31.25	45.0	30.59
11	44.9	31.19	46.5	31.32	45.1	31.27
12	45.6	31.03	46.2	31.30	45.3	31.06
13	46.0	31.18	45.5	31.29	45.8	31.16
14	46.2	31.21	45.5	31.35	45.4	31.28
15	46.0	31.34	45.5	31.19	44.8	31.28
16	45.8	31.25	45.0	31.19	45.7	31.36
17	45.5	31.33	45.2	31.37	45.2	31.40
18	45.4	31.05	45.1	31.38	45.1	31.40
19	45.0	31.03	45.5	31.09	44.7	31.48
20	45.3	31.04	46.5	31.38	44.8	31.25
21	45.4	30.94	46.5	31.51	44.8	31.32
22	45.6	30.97	46.3	31.53	45.0	31.39
23	45.2	30.99	46.5	31.52	45.5	31.47
24	45.4	30.84	45.5	31.51	45.3	31.45
25	45.6	31.11	45.6	31.37	45.2	31.46
26	45.2	31.05	45.6	31.33	45.3	31.52
27	45.0	31.09	45.0	31.33	45.0	31.45
28	44.8	31.32	45.2	31.36	45.0	31.44
29	44.8	31.19			45.3	31.45
30	44.9	31.22			45.6	31.52
31	44.7	31.17			45.3	31.50
1963 Mean	45.5	31.16	45.5	31.29	45.0	31.28
1940-63	44.2	31.64	43.7	31.63	43.5	31.72
1954-63	44.0	31.49	43.6	31.38	43.3	31.60
$\sigma$	1.84	0.30	1.68	0.30	1.29	0.23
Class'n	+1	-2	+2	-0	+2	-3

Triple Island, Brown Passage

Day of Month	April, 1963		May, 1963		June, 1963	
	Water Temp. °F	Salinity ‰	Water Temp. °F	Salinity ‰	Water Temp. °F	Salinity ‰
1	44.8	31.46	46.0	31.62	49.8	31.19
2	44.8	31.46	45.7	31.70	50.3	31.37
3	45.0	31.53	47.0	31.64	50.2	31.42
4	45.4	31.53	48.0	31.73	50.5	31.46
5	45.5	31.57	47.4	31.65	50.0	29.55
6	45.8	31.48	46.5	31.58	50.0	29.69
7	45.8	31.54	47.8	31.72	53.0	28.66
8	46.0	31.62	47.7	31.67	50.0	29.62
9	46.6	31.61	47.9	31.64	52.0	30.12
10	46.5	31.58	48.0	31.66	50.1	30.00
11	48.0	31.52	49.5	31.63	51.0	29.73
12	47.5	31.61	49.5	31.60	52.0	29.44
13	46.5	31.64	48.6	31.58	54.0	27.48
14	45.2	31.59	48.5	31.60	53.0	28.64
15	46.5	31.60	48.2	31.58	53.0	30.95
16	46.1	31.70	49.2	31.59	53.0	27.17
17	45.0	31.60	48.7	31.63	52.5	28.76
18	44.0	31.58	48.7	31.64	52.3	31.06
19	45.0	31.61	49.2	31.36	52.5	30.39
20	47.5	31.68	49.7	31.12	53.0	30.95
21	47.0	31.61	49.9	31.41	54.0	31.06
22	47.0	31.64	49.2	31.22	54.5	27.13
23	46.0	31.67	49.7	31.37	52.5	29.22
24	47.0	31.75	49.5	31.27	52.0	29.54
25	47.5	31.69	50.2	30.26	50.0	31.10
26	47.5	31.68	50.2	29.24	53.0	31.15
27	46.5	31.67	52.5	27.75	54.5	27.15
28	46.3	31.67	50.8	28.74	54.3	27.88
29	46.3	31.67	50.0	30.88	54.5	25.21
30	46.0	31.69	51.0	31.04	54.0	25.57
31			50.5	31.26		
1963 Mean	46.2	31.61	48.9	31.17	52.2	29.42
1940-63	44.9	31.64	47.9	30.83	51.9	29.17
1954-63	44.9	31.43	47.8	30.97	51.9	29.42
$\sigma$	1.36	0.47	1.41	0.46	1.80	1.02
Class 'n	+1	-1	+1	+0	+0	+0

Triple Island, Brown Passage

Day of Month	July, 1963		August, 1963		September, 1963	
	Water Temp. °F	Salinity ‰	Water Temp. °F	Salinity ‰	Water Temp. °F	Salinity ‰
1	55.5	25.90	55.7	26.40	56.1	28.69
2	55.5	27.87	55.3	26.97	56.0	29.88
3	56.5	28.81	55.5	27.36	55.5	30.82
4	57.5	25.94	54.6	28.20	56.5	31.15
5	56.0	30.12	53.0	28.99	56.5	31.25
6	57.5	31.06	53.1	29.76	56.0	31.13
7	57.6	30.87	54.2	31.97	57.0	31.21
8	55.2	29.68	54.1	29.88	57.0	31.33
9	54.5	29.81	56.0	29.66	58.0	31.36
10	53.8	29.76	56.1	28.70	57.1	28.65
11	54.6	31.11	56.9	28.92	55.0	30.68
12	54.0	31.51	57.3	28.62	56.0	30.93
13	54.3	31.34	57.7	30.01	56.2	30.95
14	55.8	30.94	54.3	30.72	56.0	31.11
15	56.2	26.95	54.2	30.85	57.0	31.23
16	54.3	23.36	56.3	30.83	56.1	31.32
17	54.8	25.60	54.8	30.99	55.0	31.61
18	54.4	28.48	55.1	30.93	56.1	31.54
19	53.5	30.22	56.5	30.03	56.5	31.63
20	53.9	30.66	55.0	30.36	55.6	31.45
21	54.4	31.05	56.2		56.7	31.30
22	53.0	30.91	56.0	30.64	56.0	31.35
23	53.3	31.25	56.1	30.15	55.0	31.37
24	54.3	30.83	56.5	29.91	54.0	31.57
25	54.5	28.29	56.8	29.82	54.1	31.53
26	55.1	27.02	56.5	30.12	54.0	31.71
27	54.5	27.67	57.0	29.48	53.0	28.84
28	56.6	26.30	58.5	27.61	54.5	31.07
29	56.0	26.77	57.0	27.78	55.0	31.71
30	55.8	26.95	57.8	26.76	54.0	31.78
31	56.2	25.92	56.5	29.10		
1963 Mean	55.1	28.80	55.8	29.38	55.7	31.00
1940-63	54.4	29.20	54.8	30.10	53.2	30.79
1954-63	54.4	28.79	55.2	29.99	53.8	30.73
σ	1.04	1.37	1.28	0.70	1.24	0.38
Class'n	+1	+0	+1	-1	+3	+1

Triple Island, Brown Passage

Day of Month	October, 1963		November, 1963		December, 1963	
	Water Temp. °F	Salinity ‰	Water Temp. °F	Salinity ‰	Water Temp. °F	Salinity ‰
1	54.3	31.72	52.1	31.57	46.0	31.26
2	54.5	31.72	51.8	31.73	49.0	31.28
3	54.0	31.74	51.9	31.43	47.8	31.26
4	54.4	31.78	50.5	31.33	48.2	31.30
5	53.7	30.25	50.1	31.51	47.8	31.43
6	54.0	31.74	50.0	31.38	47.0	31.22
7	54.1	31.60	50.0	31.17	47.1	31.15
8	53.7	31.60			47.0	31.22
9	53.5	31.65	48.2	31.42	45.3	31.52
10	53.5	31.71	50.0	31.43	47.3	31.17
11	53.8	31.65	51.5	31.50	47.5	31.19
12	53.9	31.76	49.0	31.38	47.7	31.26
13	53.8	31.62	51.0	31.20	47.7	31.32
14	54.2	31.50	49.8	31.32	47.2	31.29
15	54.0	31.66	48.3	30.84	47.0	31.17
16	54.5	31.70	48.5	31.21	46.5	31.18
17	54.2	31.70	47.0	30.84	46.2	31.10
18	54.0	31.68	45.0	30.80	46.6	31.36
19	53.5	31.51	44.0	30.50	46.7	31.41
20	53.2	31.52	44.0	31.09	47.4	31.30
21	52.5	31.64	46.0	31.19	47.3	31.30
22	53.3	31.72	45.0	31.35	47.7	31.26
23	52.8	31.57	46.9	31.45	47.6	31.49
24	52.5	31.53			47.2	31.18
25	52.4	31.81	48.0	31.29	47.2	31.18
26	52.2	31.72	48.2	31.23	47.3	31.23
27	51.5	31.73	47.5	31.49	47.4	31.33
28	51.8	31.52	48.0	29.78	47.4	31.32
29	51.8	31.39	48.0	31.23	47.6	31.43
30	51.6	31.47	48.3	31.52	47.8	31.47
31	52.0	31.27			47.8	31.42
1963 Mean	53.3	31.59	48.5	31.22	47.3	31.29
1940-63	50.6	31.43	48.0	31.48	46.1	31.62
1954-63	50.5	31.45	47.6	31.35	46.0	31.48
σ	1.16	0.28	1.13	0.14	1.48	0.15
Class'n	+5	+1	+1	-1	+1	-2

Bonilla Island, Hecate Strait

Day of Month	January, 1963		February, 1963		March, 1963	
	Water Temp. °F	Salinity ‰	Water Temp. °F	Salinity ‰	Water Temp. °F	Salinity ‰
1	45.0	30.55	43.5	31.02	46.0	31.21
2	45.0	30.39			45.8	31.27
3	45.0	30.57	44.0	30.55	45.5	31.27
4			44.0	30.48	45.0	30.78
5	46.0	30.50	43.5	30.73	45.5	31.22
6	46.5	30.47	44.5	31.01		
7	45.5	30.70	45.5	31.15	45.5	31.39
8	45.5	30.81	46.0	30.85	45.7	31.38
9	44.0	31.04	45.5	31.09		
10	41.0	31.05	45.5	31.27	46.0	31.55
11	42.0	31.02	45.8	31.18		
12	43.5	30.89	46.0	31.24	45.3	31.71
13	45.5	30.96	46.0	31.33	46.0	31.15
14	46.0	31.09	46.0	31.26	45.2	31.40
15	45.5	31.12	46.5	31.18	45.0	31.37
16	45.0	31.16	46.5	31.03		
17	45.0	31.19			45.7	31.41
18	45.0	31.16	45.8	31.25	45.2	31.34
19	44.5	31.17	45.7	31.20	45.0	31.37
20	44.5	31.13	46.0	31.16	44.5	
21	45.0	31.08	46.0	30.99	44.7	31.38
22	45.0	31.04	46.0	30.97	45.0	31.40
23	44.5	30.90	46.7	31.11	44.7	31.12
24	45.0	30.75	46.0	31.21	45.5	31.24
25	44.5	30.82	46.2	30.78	45.7	31.33
26	44.5	30.69	46.5	31.12	46.5	31.43
27	44.5	30.78			45.0	31.39
28	44.0	30.89	46.0	31.09	45.0	31.44
29	43.0	30.79			45.0	31.45
30	42.5	30.83			45.5	31.50
31	43.5	30.88			44.7	31.51
1963 Mean	44.5	30.88	45.6	31.05	45.3	31.35
1961-63	43.7	31.29	43.9	31.25	43.8	31.42

Bonilla Island, Hecate Strait

Day of Month	April, 1963		May, 1963		June, 1963	
	Water Temp. °F	Salinity ‰	Water Temp. °F	Salinity ‰	Water Temp. °F	Salinity ‰
1			46.0	31.44	50.0	31.48
2	44.0	31.53	46.5	31.46	51.5	31.32
3	44.0	30.75	47.0	31.41	51.5	31.40
4	45.0	31.30	48.0	31.50	51.7	30.92
5	46.3	31.18	47.5	31.22	51.5	31.45
6			47.5	31.13	51.0	31.59
7	47.0	31.51	50.0	31.38	53.3	31.57
8	47.0	31.55	49.8	31.44	53.0	31.49
9	48.0	31.55	50.5	31.50	52.0	31.58
10			50.5	31.56	51.0	31.55
11	49.0	31.53	50.5	31.58	52.5	31.54
12	47.5	31.56	49.5	31.83	52.5	31.55
13	46.0	31.30	48.5	31.46	53.0	31.58
14	46.0	31.46	50.0	31.60	52.0	31.65
15	46.5	31.56	50.0	31.55	52.5	31.55
16			51.5	31.55	52.0	31.57
17	46.0	31.67	51.0	31.58	52.5	31.57
18	45.5	31.66	49.5	31.61	52.0	31.53
19	45.5	31.61	50.0	31.59	52.5	31.56
20	46.3	31.64	50.5	31.65	52.5	31.47
21	46.5	31.66	52.3	31.64	52.0	31.68
22	47.0	31.73	51.3	31.45	52.0	31.81
23	46.5	31.47	53.0	31.64	51.0	31.65
24	47.0	31.32	52.5	31.71	54.3	31.41
25	47.5	31.61	52.3	31.70	52.6	31.26
26	49.0	31.62	54.0	31.76	53.7	31.43
27	48.5	31.35	50.5	31.81	53.4	31.73
28					52.0	31.61
29			50.5	31.55	53.0	31.60
30	47.5	31.41	50.0	31.59	51.3	31.61
31			50.0	31.59		
1963 Mean	46.6	31.48	50.0	31.55	52.2	31.52
1961-63	46.1	31.47	49.2	31.51	51.8	31.45

Bonilla Island, Hecate Strait

Day of Month	July, 1963		August, 1963		September, 1963	
	Water Temp. °F	Salinity ‰	Water Temp. °F	Salinity ‰	Water Temp. °F	Salinity ‰
1	52.0	31.59	53.0	31.01	51.5	32.08
2	53.7	31.61	52.0	31.61	53.0	31.87
3	53.2	31.58	52.8	31.35	54.0	31.00
4	53.0	31.65	52.5	31.37	54.0	31.41
5	53.0	31.59	53.0	31.70	54.5	31.56
6	55.6	31.60	52.4	31.61	54.5	31.18
7	53.5	31.78	54.0	31.59	55.5	31.51
8	52.2	31.84			56.0	31.53
9	52.2	31.86	52.0	31.80	56.0	31.51
10	52.4	31.81	52.0	31.84	57.0	
11	52.2	31.88	53.0	31.92	57.0	31.49
12	52.5	31.86	56.5	31.71	56.0	31.50
13	52.8	31.81	55.0	31.98	55.0	30.88
14	54.0	31.80	53.0	31.70	55.5	31.41
15	51.8	31.87	53.5	31.60	56.0	31.55
16	52.4	31.63	53.0	31.85	55.5	31.57
17	52.2	31.72	53.0	32.00	54.5	31.50
18	51.8	31.72	53.0	31.77	54.5	31.67
19	52.4	31.61	52.5	31.90	54.5	31.72
20	53.0	31.52	54.0	31.61	54.5	31.54
21	52.7	31.69	54.0	31.57		
22	51.6	31.76	52.5	32.04	56.5	31.70
23	52.1	31.78	53.0	32.13	55.5	31.68
24	52.3	31.78	54.0	31.94	55.0	31.61
25	55.0	31.80	53.5	31.87	56.0	31.75
26			56.7	31.70	55.5	31.73
27	53.5	31.60	57.5	31.67	54.5	31.72
28	53.0	31.76	54.5	31.99	55.5	31.74
29	53.0	31.75				
30	55.5	31.24	55.0	31.99	55.0	31.64
31	53.5	31.37	53.0	31.68		
1963 Mean	52.9	31.70	53.6	31.74	55.1	31.56
1961-63	53.0	31.60	53.6	31.60	53.7	31.69

Bonilla Island, Hecate Strait

Day of Month	October, 1963		November, 1963		December, 1963	
	Water Temp. °F	Salinity ‰	Water Temp. °F	Salinity ‰	Water Temp. °F	Salinity ‰
1	55.0	31.32	51.5	31.25	47.0	31.06
2			51.0	31.13	47.5	30.97
3			52.0	31.02	48.0	30.78
4	55.0	31.60	51.5	31.38	48.0	31.03
5	55.0	31.66	50.5	31.29	48.7	31.16
6	55.0	31.75	51.0	31.30	47.5	31.22
7	54.5	31.79	51.7	31.14	47.0	31.24
8	54.5	31.62				
9	55.0	31.28	50.0	30.57	46.5	31.24
10			51.0	30.95	47.0	31.32
11	54.0	31.18	50.5	30.92	46.5	31.31
12	54.0	31.11	50.5	30.88	47.0	31.22
13	54.0	31.29	50.0	30.79	47.0	31.07
14	54.5	31.09	50.0	31.06	46.0	30.79
15	55.0	31.24	50.0	30.98	45.0	30.34
16			49.7	31.14	45.5	30.43
17	54.0	31.36	49.5	31.22	45.2	30.52
18			47.0	31.02	45.5	30.10
19	53.0	31.08	46.0	31.10	46.0	30.83
20	52.5	31.04	46.5	30.87	46.5	30.79
21	52.5		44.0	30.82		
22	52.5	31.32	46.0	30.40	47.5	30.78
23	51.5	31.43	46.5	30.34	47.0	30.86
24					47.0	30.70
25	52.5	31.74	47.0	30.61	46.8	30.68
26	52.0	31.84	47.5	30.62	46.5	30.70
27	52.0	31.60	47.0	30.60	46.5	30.98
28	51.5	31.08	48.0	30.67	47.0	30.95
29	52.0	31.46	47.3	31.03		
30	51.0	31.27	47.5	30.93	47.0	30.58
31					47.5	31.09
1963 Mean	53.4	31.40	48.8	30.93	46.8	30.88
1961-63	51.5	31.47	47.7	31.11	45.3	31.07

McInnes Island, Milbanke Sound

Day of Month	January, 1963		February, 1963		March, 1963	
	Water Temp. °F	Salinity ‰	Water Temp. °F	Salinity ‰	Water Temp. °F	Salinity ‰
1	47.8	30.55	44.3	30.34	46.0	30.88
2	47.6	30.37	44.5	30.50	45.2	30.35
3	47.3	30.14	45.7	30.45	45.1	30.14
4	47.7	30.55	45.2	30.37	45.3	29.99
5	47.9	30.70			45.6	30.28
6	47.5	30.36	45.6	30.86	45.4	29.78
7	47.9	30.50	47.0	30.86	45.2	29.41
8	46.8	29.89	46.5	30.59	45.4	29.35
9	45.4	29.14	47.0	30.69	45.4	29.92
10	43.4	28.42	46.1	29.64	45.3	29.93
11	43.3	27.70	45.5	29.55	45.6	30.82
12	43.0	27.57	45.4	29.54	45.6	30.63
13	44.2	28.33	45.2	29.81	45.3	30.65
14	45.4	29.71	45.5	29.73	45.5	30.81
15	44.4	29.14	45.4	29.76	45.6	30.62
16	45.3	29.49	45.6	29.77	45.7	30.64
17	44.3	28.66			45.6	30.88
18	44.3	28.40	45.5	30.11	45.6	30.87
19	44.9	29.27	45.8	30.01	45.9	31.28
20	44.5	29.32	46.2	30.61		
21	44.4	28.59	46.4	30.83	45.7	30.75
22	45.2	29.34	46.1	30.60	45.5	30.72
23	44.5	28.82	46.3	30.56	45.3	30.76
24	44.1	29.00	45.4	30.31	45.9	30.17
25	44.6	29.15	45.4	30.11	46.1	29.73
26	44.3	29.45	45.3	29.94	46.2	29.78
27	44.2	29.53	45.5	29.93	45.7	30.88
28	43.6	29.67	46.2	30.89	45.6	30.88
29	43.5	29.74			45.7	31.08
30	44.2	30.05			45.9	30.85
31	44.8	30.36			45.5	30.55
1963 Mean	45.2	29.42	45.7	30.24	45.6	30.45
1955-63	43.7	30.11	43.8	30.56	43.8	30.45

McInnes Island, Milbanke Sound

Day of Month	April, 1963		May, 1963		June, 1963	
	Water Temp. °F	Salinity ‰	Water Temp. °F	Salinity ‰	Water Temp. °F	Salinity ‰
1	45.5	30.72	47.5	31.38	52.7	31.64
2	45.9	30.92	47.9	31.10	52.0	31.34
3	45.7	31.20	47.5	31.22	51.8	31.34
4	46.2	30.82	47.8	31.28	52.3	31.51
5			48.6	30.84	51.9	31.55
6	46.5	30.52	47.9	31.68	51.9	31.20
7	46.3	30.50	47.8	31.39	53.1	31.17
8	46.3	30.15	48.0	31.13	52.6	31.29
9	47.0	30.11	48.8	30.81	52.2	31.33
10	47.2	30.36	49.1	30.80	52.1	31.20
11	47.1	30.53	49.3	30.83	52.7	31.18
12	47.1	30.52	50.0	30.85	52.7	31.18
13	46.6	30.74	49.3	30.86		
14	46.8	30.69	48.5	31.06	55.1	31.09
15	46.5	30.93	48.7	31.05	54.5	31.14
16	46.2	30.88	50.0	31.02	53.3	31.16
17	46.3	30.87	51.1	30.95	53.5	31.20
18	46.3	30.88	50.3	30.98	52.8	31.24
19	46.4	30.67	51.3	30.83	53.3	31.55
20	46.5	30.87	52.3	30.64	53.0	31.18
21	48.2	30.50	55.1	29.98	52.6	31.08
22	47.5	30.76	53.2	30.39	52.9	31.03
23	46.7	30.77	52.0	30.78	52.6	31.02
24	47.1	30.88	50.1	31.22	52.9	31.31
25	47.3	31.24	50.5	31.40	51.8	31.36
26	47.5	31.23	50.3	31.13	52.3	31.41
27	48.0	31.22	51.1	31.47	53.1	31.30
28	48.0	31.32	52.1	31.49	53.5	31.13
29			51.8	31.54	54.0	31.10
30	47.6	31.51	52.8	31.64	54.7	30.54
31			52.9	31.73		
1963 Mean	46.8	30.80	50.1	31.08	52.9	31.23
1955-63	45.8	30.86	49.2	30.90	52.4	30.77

McInnes Island, Milbanke Sound

Day of Month	July, 1963		August, 1963		September, 1963	
	Water Temp. °F	Salinity ‰	Water Temp. °F	Salinity ‰	Water Temp. °F	Salinity ‰
1	55.0	30.39	54.8	30.84	57.6	31.21
2	57.0	30.03	55.6	30.74	58.7	30.80
3	56.7	30.12			57.6	30.86
4			56.1	30.72	58.0	30.38
5	56.4	29.60	56.0	30.71	56.2	31.01
6	58.0	29.45	56.3	30.82	55.7	31.32
7	57.6	29.12	56.4	30.94	56.4	30.82
8	53.3	30.66	56.5	30.99	58.6	30.48
9	53.5	30.66	54.8	31.04	59.0	30.53
10	54.0	30.98	54.3	31.07	59.3	30.49
11	55.1	30.98	56.0	31.11	59.6	29.33
12	55.6	30.81	56.2	31.09	58.5	29.70
13	55.6	30.99	54.3	31.28	56.8	30.95
14	56.3	31.01	56.2	31.09	56.5	31.06
15	57.1	30.77	60.1	31.21	56.7	31.00
16	56.7	30.97	59.5	31.27	58.3	30.36
17	58.6	30.22	58.5	31.17	57.5	30.62
18			58.0	31.17	57.0	30.94
19	55.4	31.16			57.2	30.68
20	54.1	31.11	57.9	31.28	56.8	30.81
21	56.1	30.91	56.7	31.39	57.2	30.96
22	56.5	30.35	56.3	31.22	56.5	30.89
23	57.5	30.35	58.3	30.76	56.5	30.79
24	58.0	30.35			56.4	31.34
25	58.3	30.37	57.0	30.57	56.5	30.60
26	57.6	30.76	56.8	30.82	56.8	29.89
27	53.9	30.76	57.5	30.81		
28	55.4	30.76	59.1	31.14	57.3	28.84
29	54.6	30.89	58.2	31.24	56.3	30.02
30	56.4	30.79	58.2	31.35	56.2	30.32
31	55.2	31.04	57.8	31.25		
1963 Mean	56.0	30.56	56.9	31.04	57.3	30.59
1955-63	54.9	30.48	56.4	30.46	55.3	30.10

McInnes Island, Milbanke Sound

Day of Month	October, 1963		November, 1963		December, 1963	
	Water Temp. °F	Salinity ‰	Water Temp. °F	Salinity ‰	Water Temp. °F	Salinity ‰
1	55.6	30.72			48.3	29.27
2	55.5	30.58	51.0	28.95	47.6	28.60
3	55.3	30.29	52.9	31.26	48.1	29.26
4	56.0	29.84	50.4	28.60	48.5	29.55
5	55.3	26.55	49.7	28.09	48.1	29.59
6	55.4	26.89	49.3	27.99	47.7	29.30
7	54.8	27.16	49.3	28.24	47.0	28.74
8	54.3	30.62	50.1	28.64	47.1	29.44
9	53.8	29.21	50.4	29.76	46.3	29.37
10	54.0	29.68	50.4	29.40	46.3	29.48
11	53.9	31.10	50.2	29.16	45.9	29.45
12	54.2	31.38	49.8	27.04	46.4	29.59
13	54.0	29.84	48.2	26.98	46.1	29.61
14	53.9	29.40	48.0	27.36	46.5	29.52
15	53.8	28.63	48.4	27.23	45.5	29.64
16	53.4	28.33	49.4	29.31		
17	53.4	27.91	49.1	29.23	46.5	29.92
18	52.8	28.71	47.5	28.54	46.3	30.08
19					46.6	30.25
20	54.2	31.11	50.3	30.16	46.4	30.16
21	53.9	30.72	48.2	29.62	46.4	30.27
22	54.4	31.30	47.0	29.32		
23	52.7	29.94	49.1	30.32		
24			48.4	29.94	47.5	30.47
25			50.0	30.76	47.4	30.56
26	51.8	29.79	49.3	30.23	47.0	30.38
27	51.6	29.50	49.4	30.59	46.7	30.05
28	50.3	27.54			46.6	29.91
29	50.5	28.19	49.8	30.73	47.1	30.02
30	49.7	27.19	49.5	30.60	47.5	30.61
31						
1963 Mean	53.6	29.34	49.4	29.19	46.9	29.74
1955-63	50.4	29.93	47.1	29.66	45.4	30.29

Cape St. James, Queen Charlotte Islands

Day of Month	January, 1963		February, 1963		March, 1963	
	Water Temp. °F	Salinity ‰	Water Temp. °F	Salinity ‰	Water Temp. °F	Salinity ‰
1					46.5	31.96
2			45.9	31.88	46.4	31.84
3	47.3	32.01	45.5	31.95	46.2	31.86
4			45.3	31.88	46.6	31.86
5	47.7	32.05			46.3	31.69
6	47.2	32.22	46.5	31.91	46.3	31.94
7						
8					46.8	31.81
9	46.7	32.13			46.3	31.95
10	44.9	32.09	46.5	31.97	46.4	31.92
11	45.2	32.07	46.6	31.92		32.09
12	46.7	32.20	46.5	31.98		32.02
13	47.5	32.20				32.01
14	47.3	32.16	46.5	31.89		31.93
15			46.7	32.02		32.04
16			47.2	31.83		
17	46.4	32.06	46.8	31.94		
18	46.2	31.94		31.94		
19	46.8	31.99	46.6	31.91		
20	46.5	32.01	46.6	31.88		
21	46.6	32.00	46.8	32.00		
22	46.9	31.84	46.7	32.14		
23	46.4	31.97	46.8	32.13	46.9	31.90
24	46.7	31.85			46.3	31.77
25	46.8	31.80	46.9	31.96		
26	46.9	31.93	46.7	32.07		
27	46.8	31.88			45.4	32.09
28			46.1	31.97		
29	45.3	31.97				
30	45.8	32.02			46.3	32.14
31	45.7	31.96				
1963 Mean	46.5	32.01	46.5	31.96	46.4	31.93
1943-63	45.3	32.18	44.6	32.17	44.3	32.13
1954-63	45.4	32.03	44.8	32.02	44.2	32.02
σ	1.15	0.47	1.29	0.25	1.55	0.20
Class'n	+1	-0	+2	-0	+2	-0

## Cape St. James, Queen Charlotte Islands

Day of Month	April, 1963		May, 1963		June, 1963	
	Water Temp. °F	Salinity ‰	Water Temp. °F	Salinity ‰	Water Temp. °F	Salinity ‰
1	45.7	31.99	46.9	32.11	49.3	32.17
2	45.9	31.96	47.9	32.12	50.1	32.17
3			47.9	32.05		
4	46.7				49.8	32.08
5	46.1	31.94			51.7	32.20
6	46.2	32.00	47.4	32.29	50.1	31.91
7	46.1	31.90	47.0	32.18	50.1	31.46
8	46.2	31.94	47.2	32.15	48.6	32.09
9	46.3	32.02	47.9	32.18	50.6	32.02
10	46.3	31.96	48.1	32.11	50.3	32.08
11	47.6	32.00	48.0	32.10	50.6	32.14
12	46.3	32.12			50.4	32.13
13	46.6	32.03			51.8	32.07
14			48.3	32.24	50.5	32.18
15	46.7	32.08	48.4	32.14	51.2	32.14
16	46.5	32.12	49.6	32.15	50.9	32.09
17	45.9	32.08			51.5	32.14
18	46.7	32.07	50.5	32.04	51.1	32.13
19	46.7	31.95	49.3	32.10	50.8	32.17
20	47.6	31.94	50.0	32.05	50.9	32.09
21	48.1	32.05	49.6	31.59	52.9	32.06
22	46.9	32.02	50.2	32.10	52.6	32.12
23	46.7	32.04	48.3	32.19	50.6	32.18
24			48.7	32.17	50.9	32.29
25	47.8	32.05	50.5	32.10	50.6	32.24
26	47.0	32.06	50.2	32.12	52.0	32.12
27	47.0	31.96	50.7	32.06	50.9	32.25
28					51.3	32.15
29					51.3	32.18
30	46.7	32.41			53.1	32.04
31			49.9	32.09		
1963 Mean	46.6	32.03	48.8	32.10	50.9	32.11
1943-63	45.4	32.21	47.6	32.18	50.3	32.17
1954-63	45.5	32.12	47.7	32.12	50.7	32.14
σ	1.08	0.16	0.70	0.15	1.47	0.12
Class'n	+2	-1	+3	-0	+0	-0

Cape St. James, Queen Charlotte Islands

Day of Month	July, 1963		August, 1963		September, 1963	
	Water Temp. °F	Salinity ‰	Water Temp. °F	Salinity ‰	Water Temp. °F	Salinity ‰
1	53.8	32.04	57.0	31.91	57.6	31.40
2	53.5	32.05	55.9	31.90	56.5	31.23
3	53.8	32.07	56.0	31.84	54.0	31.50
4	53.9	31.98	56.0	31.84	53.4	32.13
5	54.4	31.97	57.4	31.83	54.0	32.00
6	55.8	31.94	56.8	31.95	53.6	32.11
7	56.5	31.92	55.9	32.04	52.8	32.23
8	54.0	32.10	57.4	31.81	52.9	32.33
9	54.0	32.08	57.7	31.73	52.9	32.20
10	53.2	32.16	56.6	31.93	55.8	31.95
11	52.5	32.13	56.7	31.88	54.6	31.98
12	53.3	32.03	56.4	32.09	55.4	31.75
13	52.9	32.09	56.5	31.85	53.2	32.15
14	53.4	32.11	56.6	31.88	55.1	31.98
15	53.0	32.17	57.6	31.76	54.6	32.04
16	54.1	32.05	57.5	31.75	57.0	31.59
17	54.8	32.12	57.6	31.82	54.1	31.86
18	54.1	32.05	57.7	32.01	53.8	32.16
19	53.7	31.96	56.0	31.85	53.9	31.96
20	54.3	32.08	55.4	32.13	56.9	32.23
21	54.4	31.96	56.6	31.66	52.0	32.33
22	52.9	32.29	58.2	31.30	52.0	32.28
23	56.5	31.92	57.9	31.58	51.7	32.20
24	55.7	31.98	56.6	31.81	51.0	32.46
25	54.0	32.12	56.5	31.72	51.9	32.31
26	55.2	32.03	57.2	31.56	53.8	32.01
27	53.9	32.15	57.5	31.52	53.4	32.15
28	54.5	32.09	56.9	31.62	54.9	31.81
29	55.0	31.71	57.0	31.65	53.0	32.20
30	57.4	31.84	58.2	31.34	52.8	31.83
31	56.0	31.95	57.8	31.36		
1963 Mean	54.3	32.04	56.9	31.77	54.0	32.01
1943-63	52.9	32.09	54.5	32.02	53.2	32.06
1954-63	53.5	32.06	55.0	31.97	53.6	32.00
$\sigma$	1.84	0.14	1.64	0.13	1.02	0.09
Class'n	+0	-0	+2	-3	+0	+0

Cape St. James, Queen Charlotte Islands

Day of Month	October, 1963		November, 1963		December, 1963	
	Water Temp. °F	Salinity ‰	Water Temp. °F	Salinity ‰	Water Temp. °F	Salinity ‰
1	53.6	31.42			49.3	32.05
2	52.5	32.23			49.3	32.04
3						
4	55.5	32.14	51.4	32.23	48.7	32.23
5	54.1	32.22	52.4	32.08	49.3	31.94
6			50.9	32.10	49.4	31.86
7	54.4	32.20	50.3	31.99		
8	51.3	32.36				
9	51.7	32.07	51.0	32.00		
10			52.3	32.02	48.2	31.95
11	50.2	32.44			48.6	32.02
12			51.9	32.19	49.0	31.98
13	53.8	32.23	51.6	32.18	48.8	31.90
14			51.4	31.99	48.6	31.91
15	51.3	32.26		32.08	48.0	31.94
16			50.2	32.02		
17	51.6	32.29	49.8	32.03		
18			50.2	31.89		
19			50.2	31.91	48.3	31.96
20					48.5	31.88
21	50.0	32.36	49.5	31.85		
22						
23					48.3	31.96
24						
25			49.0	32.08		
26					48.4	31.94
27			48.3	32.03	48.6	31.87
28	50.6	32.17	49.3	32.06	48.4	32.06
29			48.9	32.11		
30				32.17		
31						
1963 Mean	52.4	32.18	50.5	32.05	48.7	31.97
1943-63	49.7	32.27	47.7	32.25	46.3	32.23
1954-63	49.7	32.18	47.4	32.19	46.3	32.20
σ	1.43	0.13	1.68	0.19	1.52	0.42
Class'n	+3	-0	+3	-1	+3	-1

Pine Island, Queen Charlotte Strait

Day of Month	January, 1963		February, 1963		March, 1963	
	Water Temp. °F	Salinity ‰	Water Temp. °F	Salinity ‰	Water Temp. °F	Salinity ‰
1	48.3	30.56	45.5	31.51	46.2	31.40
2	48.4	30.72	45.4	31.55	46.3	31.44
3	48.1	30.75	45.5	30.48	46.4	31.39
4	47.5	30.77	46.0	30.40	46.0	31.40
5	47.7	30.79	45.8	31.30	46.1	31.27
6	47.3	30.64	47.0	30.84	46.1	31.23
7	47.3	30.62	46.8	31.33	46.2	31.30
8	47.2	30.63	46.6	31.48	46.3	31.34
9	46.8	30.75	47.2	31.49	46.8	31.47
10	46.2	30.86	47.0	31.52	46.3	31.54
11	45.8	30.97	46.7	31.45	46.3	31.61
12	46.2	30.99	47.2	31.44	46.4	31.79
13	46.7	31.07	46.4	31.47	45.5	31.65
14	47.0	31.18	46.3	31.24	46.3	31.77
15	46.8	31.12	46.1	31.21	45.4	31.64
16	46.7	30.97	46.1	31.05	45.5	31.43
17	46.4	30.89	45.8	31.07	45.7	31.40
18	45.8	30.66	45.9	31.01	45.8	31.34
19	46.0	30.61	46.1	30.95	45.6	31.40
20	46.0	30.61			45.7	31.33
21	45.9	30.64	46.2	31.08	45.4	31.35
22	46.3	30.82	46.2	31.15	45.6	31.39
23	46.4	31.06	46.4	31.23	46.6	31.54
24	46.4	31.07	46.5	31.27	46.1	31.70
25	46.7	31.28	46.4	31.23	46.2	31.64
26	46.4	31.50	46.4	31.24	46.8	31.65
27	45.9	31.48	46.7	31.26	45.8	31.37
28	45.5	31.53	47.0	31.43	45.7	31.78
29	45.0	31.52			45.4	31.77
30	45.4	31.63			45.6	31.73
31	45.2	31.48			45.9	31.74
1963 Mean	46.5	30.97	46.3	31.21	46.0	31.51
1937-63	45.4	31.42	45.0	31.40	45.1	31.54
1954-63	45.4	31.20	45.1	31.26	45.0	31.43
σ	0.95	1.19	1.15	0.24	1.21	0.35
Class 'n	+2	-2	+2	-0	+1	+0

Pine Island, Queen Charlotte Strait

Day of Month	April, 1963		May, 1963		June, 1963	
	Water Temp. °F	Salinity ‰	Water Temp. °F	Salinity ‰	Water Temp. °F	Salinity ‰
1	45.4	31.69	47.4	31.58	49.0	31.48
2	45.7	31.78	48.0	31.48	49.0	31.50
3	45.6	31.78	48.4	31.40	48.8	31.55
4	46.2	31.64	49.7	31.39	48.7	31.73
5	46.1	31.54	48.3	31.48	49.1	31.71
6	46.4	31.59	47.5	31.08	48.6	31.81
7	46.6	31.63	49.6	31.30	50.5	31.76
8	46.7	31.36	48.8	31.41	49.9	31.69
9	47.6	31.62	49.1	31.43	49.2	31.98
10	47.7	31.64	48.8	31.45	49.4	31.81
11	47.6	31.72	49.1	31.48	49.1	31.81
12	47.6	31.73	48.5	31.52	49.1	31.81
13	46.7	31.58	48.3	31.57	49.3	31.74
14	46.8	31.55	48.4	31.57	50.4	31.59
15	47.1	31.62	48.3	31.49	49.9	31.61
16	47.2	31.58	48.3	31.58		
17	47.1	31.45	48.8	31.54	49.6	31.67
18	46.9	31.55	49.4	31.51	50.2	31.51
19	47.0	31.60	48.9	31.52	49.6	31.68
20	47.2	31.49	49.3	31.50	50.7	31.46
21	47.9	31.57	49.6	31.59	49.6	31.91
22	47.2	31.65	49.2	31.58	49.6	32.00
23	46.8	31.61	49.2	31.71	50.6	31.88
24	46.9	31.62	48.8	31.80	50.1	31.96
25	47.8	31.70	49.2	31.81	48.9	32.02
26	48.1	31.75	49.9	31.61	49.2	31.96
27	47.8	31.72	49.4	31.65	48.4	32.05
28	47.9	31.74	49.7	31.71	49.0	31.86
29	47.9	31.64	49.6	31.55	49.3	31.79
30	47.7	31.54	49.4	31.53	49.9	31.55
31			48.9	31.55		
1963 Mean	47.0	31.62	48.9	31.53	49.5	31.75
1937-63	46.0	31.65	47.4	31.77	48.7	31.84
1954-63	46.0	31.61	47.6	31.73	48.7	31.79
$\sigma$	1.05	0.28	0.94	0.29	1.01	0.22
Class 'n	+2	+0	+2	-1	+1	-0

## Pine Island, Queen Charlotte Strait

Day of Month	July, 1963		August, 1963		September, 1963	
	Water Temp. °F	Salinity ‰	Water Temp. °F	Salinity ‰	Water Temp. °F	Salinity ‰
1	49.1	31.51	50.6	31.60	50.6	31.64
2	48.6	31.91	51.1	31.48	50.1	31.51
3	49.8	31.78	52.0	31.35	50.4	31.76
4	50.2	31.50	52.1	31.42	49.3	31.02
5	50.6	31.28	52.6	31.46	50.4	32.13
6	51.6	31.27	50.0	31.68	50.3	32.03
7	50.6	31.60	51.1	31.75	50.6	32.11
8	49.3	31.73	52.6	31.67	50.7	32.07
9	49.6	31.65	49.7	32.00	51.1	32.10
10	49.8	31.67	51.5	31.89	51.8	32.09
11	50.4	32.04	50.5	31.96	51.2	32.08
12	50.4	31.67	50.8	31.85	50.2	31.91
13	49.9	31.56	50.9	31.89	51.4	31.92
14	49.8	31.55	49.4	31.93	51.3	31.88
15	50.5	31.54	50.2	31.76	52.9	31.98
16	49.8	31.53	50.6	31.59	51.8	32.04
17	49.6	31.88	50.1	31.67	52.6	32.02
18	50.7	31.53	49.9	31.62	51.0	31.96
19	50.2	31.80	49.9	31.15	50.5	31.99
20	50.2	31.69	49.7	31.58	52.0	32.17
21	50.7	31.51	50.1	31.80	50.6	31.98
22	49.3	31.36	50.9	31.85	50.1	31.65
23	50.8	31.73	50.4	31.85	52.1	31.88
24	51.4	31.92	49.7	31.92	50.1	31.85
25	49.7	31.93	50.2	31.77	53.6	31.10
26	50.4	31.87	50.2	31.59	55.6	31.95
27	50.7	31.77	51.6	31.43	53.4	31.62
28	51.1	31.75	51.4	31.47	52.7	31.67
29	50.3	31.65	51.8	31.33	52.8	31.65
30	50.1	31.55	51.8	31.06	52.7	31.72
31	50.7	31.41	50.1	31.71		
1963 Mean	50.2	31.65	50.8	31.65	51.5	31.85
1937-63	49.7	31.82	50.0	31.83	49.4	31.93
1954-63	49.7	31.80	50.0	31.78	49.6	31.86
$\sigma$	0.72	0.16	0.86	0.13	1.06	0.16
Class 'n	+1	-1	+1	-1	+3	-0

Pine Island, Queen Charlotte Strait

Day of Month	October, 1963		November, 1963		December, 1963	
	Water Temp. °F	Salinity ‰	Water Temp. °F	Salinity ‰	Water Temp. °F	Salinity ‰
1	53.6	31.69	50.9	31.02	48.6	31.25
2	54.9	31.75	50.4	31.32	48.4	31.10
3	54.8	31.92	51.6	31.11	48.2	31.11
4	53.4	31.97	50.6	31.26	48.4	31.10
5	52.2	31.90	51.3	31.18	48.6	31.14
6	51.3	31.86	51.4	31.22	48.1	31.13
7	50.9	31.93	50.9	31.18	47.8	31.14
8	52.9	31.91	50.3	31.16	47.7	31.09
9	53.4	31.76	50.4	31.03	47.3	31.06
10	52.8	31.79	51.4	31.10	47.1	30.99
11	55.4	31.74	51.2	31.12	48.0	31.12
12	56.2	31.80	51.2	31.21	47.8	31.04
13	56.2	31.77	51.0	31.16	47.5	31.11
14	56.9	31.77	50.1	31.02	47.6	31.10
15	55.9	31.75	49.8	31.04	47.6	31.10
16	56.5	31.66	49.9	31.10	47.3	31.18
17	56.2	31.75	49.4	31.07	46.7	30.58
18	54.6	31.70	49.2	31.03	47.3	30.97
19	52.9	31.65	48.9	31.11	47.6	30.86
20	51.8	31.61	47.4	31.02	47.6	31.12
21	51.8	31.68	47.8	31.16	47.2	31.19
22	52.6	31.66	48.0	30.99	47.4	30.48
23	55.4	31.50	48.4	31.00	47.7	31.05
24			48.2	30.94	49.8	27.38
25	55.2	31.54	48.4	30.86	49.6	31.20
26	54.8	31.50	48.7	31.02	49.1	31.09
27			49.9	31.17	49.2	31.19
28	52.4	31.43	50.3	31.28	48.4	31.09
29	52.4	31.41	49.8	31.21	47.8	31.05
30	52.0	31.40	49.4	31.24	47.4	30.86
31	51.4	31.34			47.6	30.92
1963 Mean	53.8	31.69	49.9	31.11	47.9	30.93
1937-63	49.2	31.99	48.0	31.60	46.6	31.40
1954-63	49.5	31.87	48.0	31.64	46.5	31.35
σ	1.57	0.17	1.50	0.29	1.30	0.38
Class'n	+5	-2	+2	-3	+2	-2

Kains Island, Quatsino Sound

Day of Month	January, 1963		February, 1963		March, 1963	
	Water Temp. °F	Salinity ‰	Water Temp. °F	Salinity ‰	Water Temp. °F	Salinity ‰
1	48.3	26.87	46.3	30.90	46.6	29.48
2	48.2	25.46	46.1	30.84	47.3	29.54
3	48.3	25.76	47.0	31.07	46.4	29.33
4	48.3	27.32			46.9	29.04
5	48.4	25.34			47.6	29.28
6	48.2	25.69	47.7	28.88	47.3	29.43
7	48.9	27.00	48.5	26.12	47.5	29.71
8	48.3	28.42	47.8	26.71	46.8	29.72
9	47.8	27.93	47.8	24.69	47.0	30.10
10	46.8	28.68	47.0	27.57	46.9	31.17
11	45.7	28.46	47.4	28.28	46.7	31.16
12	47.8	28.85	47.5	29.15	46.9	30.95
13	48.3	29.04	47.1	29.18	46.8	30.94
14	48.8	29.06	47.4	29.07	46.8	30.71
15	48.2	29.28	47.3	29.20	46.9	30.72
16	48.2	29.47	47.5	29.99	47.0	30.88
17	48.2	29.32	47.3	28.81	47.6	30.85
18	47.0	29.94	47.4	28.12	46.8	30.61
19	47.2	29.51	47.8	28.83	46.8	30.70
20	47.5	29.52	47.8	29.02	46.2	30.56
21	48.3	29.65	47.7	28.71	45.3	27.97
22	47.7	30.01	47.8	28.79	45.8	29.22
23	47.4	30.09	47.9	28.60	46.8	26.57
24	47.8	30.00	47.5	29.23	46.0	29.62
25	46.9	30.45	47.6	29.35	46.8	27.80
26	46.7	30.64	47.5	29.21	48.2	29.37
27	45.8	30.93	47.0	29.70	47.3	27.95
28	45.3	30.97	47.4	29.92	46.4	30.96
29	44.9	31.02			46.1	29.53
30	45.3	31.03			46.2	29.47
31	44.8	30.96			46.9	29.51
1963 Mean	47.4	28.92	47.4	28.84	46.8	29.77
1935-63	45.8	29.32	45.4	29.44	46.0	29.88
1954-63	45.9	28.99	45.9	29.40	45.8	29.79
σ	1.46	0.16	1.43	0.70	1.29	0.91
Class'n	+2	-0	+2	-1	+1	-0

Kains Island, Quatsino Sound

Day of Month	April, 1963		May, 1963		June, 1963	
	Water Temp. °F	Salinity ‰	Water Temp. °F	Salinity ‰	Water Temp. °F	Salinity ‰
1	46.5	29.54	49.0	29.69	52.4	30.99
2	47.2	30.49	48.3	27.73	53.7	30.83
3	46.8	30.31	49.2	29.99	52.5	30.98
4	47.4	30.21	50.0	28.80	52.7	30.83
5	47.4	30.24	49.9	30.28	54.3	30.61
6	47.8	30.38	49.5	30.30	50.7	30.80
7	48.2	29.69	50.9	26.75	51.8	30.78
8	48.9	30.14	50.1	28.91	51.3	32.09
9	49.0	29.93	49.7	29.35	53.1	30.92
10	49.2	29.94	50.0	29.54	51.5	31.00
11	48.4	30.15	50.2	29.59	51.6	31.12
12	48.3	30.61	50.5	29.86	52.3	31.05
13	48.2	30.62	50.5	29.71	53.9	31.03
14	48.0	29.96	50.2	29.87	55.7	30.99
15	47.9	29.95	50.4	29.52	57.0	31.15
16	47.8	30.18	51.8	29.45	53.6	31.41
17	48.2	30.34	52.2	29.75	57.0	31.18
18	48.3	30.20	55.0	29.46	53.4	31.36
19	48.3	30.27	53.4	29.67	51.7	31.63
20	51.9	30.13	56.0	30.45	54.8	31.33
21	50.5	30.31	54.0	29.99	54.9	31.30
22	49.6	30.38	54.8	30.26	54.2	31.53
23	49.5	30.25	54.7	30.61	51.5	31.88
24	49.0	30.26	51.3	30.67	52.8	31.79
25	49.5	30.41	51.5	30.66	51.5	31.62
26	49.5	30.84	51.7	30.76	52.2	31.59
27	49.8	30.91	51.9	30.79	52.8	31.61
28	49.5	30.95	52.9	30.88	52.2	31.55
29	49.5	30.65	53.2	30.99	51.7	31.81
30	49.4	30.64	52.8	31.07	53.4	31.59
31			52.9	30.92		
1963 Mean	48.6	30.30	51.6	29.88	53.1	31.28
1935-63	47.6	30.14	50.4	30.60	52.9	31.37
1954-63	47.7	30.12	50.4	30.62	52.9	31.23
$\sigma$	1.09	0.50	1.15	0.59	1.42	0.45
Class 'n	+1	+0	+2	-2	+0	+0

Kains Island, Quatsino Sound

Day of Month	July, 1963		August, 1963		September, 1963	
	Water Temp. °F	Salinity ‰	Water Temp. °F	Salinity ‰	Water Temp. °F	Salinity ‰
1	53.8	31.64	55.1	31.58	58.2	31.82
2	54.9	31.52	55.3	31.60	58.6	31.91
3	57.7	31.36	56.7	31.73	58.2	31.93
4	55.0	31.85	58.3	31.68	58.9	31.86
5	54.8	31.83	56.3	31.79	59.7	31.89
6	59.1	31.05	54.6	31.86	58.9	31.92
7	58.0	31.14	54.6	31.92	59.7	31.84
8	56.1	31.25	54.9	32.07	58.9	31.73
9	55.9	31.64	58.0	31.98	61.2	31.67
10	55.8	31.66	54.7	32.08	61.5	31.76
11	55.5	31.84	54.4	32.17	62.1	31.65
12	54.9	31.81	57.0	32.10	61.7	31.71
13	54.6	31.81	57.0	31.98	61.2	31.65
14	55.6	31.57	53.7	32.26	61.1	31.36
15	56.0	31.29	57.4	31.98	61.4	31.13
16	56.2	31.27	58.9	31.99	61.2	31.26
17	58.1	31.38	59.5	31.88	60.7	31.70
18	54.0	31.69	58.5	32.02	59.8	31.80
19	55.5	31.73	57.5	31.99	60.0	31.68
20	55.4	31.63	56.7	31.98	59.9	31.90
21	56.2	31.23	57.6	31.92	60.7	28.60
22	54.3	31.73	59.0	31.82	59.5	29.06
23	54.2	29.57	57.8	31.93	58.9	29.04
24	52.8	30.43	58.2	31.90	59.6	31.71
25	56.0	31.18	58.6	31.93	58.5	28.59
26	57.5	31.31	59.0	31.90	59.1	28.10
27	55.6	31.57	59.1	31.85	59.7	27.69
28	54.2	31.62	59.3	31.90	58.9	30.59
29	53.9	31.68	58.2	32.01	59.6	30.42
30	55.2	31.37	59.3	31.92	59.7	30.25
31	55.0	32.10	56.9	32.05		
1963 Mean	55.5	31.44	57.2	31.93	59.9	30.94
1935-63	54.8	31.72	55.7	32.03	55.4	31.67
1954-63	54.4	31.63	55.7	31.88	55.9	31.47
σ	1.24	0.27	1.53	0.28	1.71	0.40
Class'n	+1	-1	+2	+0	+4	-2

Kains Island, Quatsino Sound

Day of Month	October, 1963		November, 1963		December, 1963	
	Water Temp. °F	Salinity ‰	Water Temp. °F	Salinity ‰	Water Temp. °F	Salinity ‰
1	59.3	31.28	52.5	26.70	50.8	28.52
2	59.5	30.28	52.6	27.32	50.3	28.25
3	59.2	31.00			51.1	29.03
4	58.6	29.32	52.3	27.05	51.2	29.57
5	58.0	30.23	51.0	25.75	50.9	28.87
6	58.1	29.59	51.2	26.01	50.0	28.84
7	57.8	30.32	51.0	26.47	48.2	29.29
8	57.7	30.88	51.2	26.60	47.9	29.32
9	57.6	30.40	51.2	27.26	48.8	29.15
10			50.7	25.98	49.1	29.39
11	57.5	30.13	51.8	27.82	49.5	29.62
12	57.7	31.09	51.9	27.77	49.4	29.76
13	56.6	29.21	50.2	26.09	50.0	29.59
14	57.6		52.0	28.45	50.1	29.99
15	57.0	29.05	52.6	29.67	50.2	30.01
16	57.0	29.78	51.3	28.99	50.0	29.93
17	56.2	29.19	51.3	27.55	50.0	30.14
18	55.5	29.75	50.3	27.72	50.1	30.15
19	54.2	26.76	50.2	28.58	48.8	28.32
20			50.9	28.72	49.1	27.70
21	56.2	30.43	50.8	28.73	49.8	29.39
22	56.0	30.34	50.2	28.59		
23	55.4	28.07			50.2	28.86
24			50.0	28.13		
25					49.3	23.52
26	51.5	23.78	51.3	28.70	48.8	23.75
27	52.0	23.70	50.6	28.30	49.0	26.29
28	53.9	25.43	50.7	28.66	49.0	25.44
29	50.5	24.38	48.8	25.13	49.9	28.13
30	50.1	24.77	49.3	25.46	50.0	28.53
31						
1963 Mean	56.2	28.77	51.0	27.49	49.7	28.55
1935-63	52.6	30.48	49.2	29.56	47.3	28.88
1954-63	52.5	29.98	49.2	29.31	47.2	28.46
$\sigma$	1.49	1.13	1.53	0.95	1.78	1.22
Class'n	+5	-2	+2	-3	+2	+0

Amphitrite Point, Barkley Sound

Day of Month	January, 1963		February, 1963		March, 1963	
	Water Temp. °F	Salinity ‰	Water Temp. °F	Salinity ‰	Water Temp. °F	Salinity ‰
1			44.3	29.09	48.4	29.64
2	49.3	27.85	45.0	29.07		
3	49.1	27.84	45.5	29.17		
4	48.2	29.85			47.9	29.26
5	48.6	29.12	46.2	29.19	47.8	29.27
6	48.0	30.65	46.9	29.18	47.6	29.26
7	47.9	23.67	47.5	29.15	47.8	29.26
8	47.7	28.37	47.5	29.17	47.9	29.64
9	47.0	27.83	48.0	29.96	47.8	29.53
10	46.0	27.85	48.3	30.12		
11	45.3	27.72	48.7	28.65		
12	44.9	27.10	48.6	28.77	47.4	29.26
13	45.6	28.92	48.4	26.93	47.3	29.27
14	45.9	29.36	48.5	28.71	47.6	29.26
15	46.0	30.74	48.4	26.74	47.6	29.27
16	46.4	30.79	48.4	26.01	47.7	29.26
17	46.6	29.38	48.4	28.90	47.7	29.85
18			48.2	28.73		
19			48.3	27.18		
20	46.1	29.43	48.4	28.79		
21	46.2	29.95	48.3	28.78	47.0	29.33
22	46.3	28.44	48.6	28.75	46.4	29.67
23	46.6	28.49	48.7	28.72	46.5	29.51
24	46.4	28.50	48.6	29.54	46.8	29.32
25	46.4	30.33	48.5	27.24	47.0	28.30
26	46.4	30.29			47.5	28.27
27	46.5	30.29	48.5	27.35	47.1	28.33
28	45.8	30.26	48.4	26.56		
29	44.9	30.25				
30	44.1	30.24			47.3	29.89
31	45.8	30.82			47.4	26.50
1963 Mean	46.6	29.08	47.8	28.48	47.4	29.14
1935-63	45.7	28.66	45.5	28.64	46.4	29.06
1954-63	46.1	28.46	46.3	28.65	46.5	29.04
σ	1.49	0.73	1.59	0.95	1.24	1.14
Class'n	+0	+1	+1	-0	+1	+0

Amphitrite Point, Barkley Sound

Day of Month	April, 1963		May, 1963		June, 1963	
	Water Temp. °F	Salinity ‰	Water Temp. °F	Salinity ‰	Water Temp. °F	Salinity ‰
1						
2	47.6	26.51			54.0	31.19
3	48.0	28.14	51.3	27.75	53.3	
4	48.1	28.33	51.4	27.76	53.4	31.77
5	48.6	28.93			53.3	31.71
6	48.7	26.33			53.2	31.71
7	48.5	26.66	52.0	29.80	52.6	31.94
8	49.0	28.98	52.2	29.89	52.4	31.60
9	49.8	27.71	52.6	30.97	52.0	31.61
10	50.7	28.36	52.6	30.27	51.2	31.77
11	50.6	29.01	52.6	30.19	50.8	31.77
12	50.4	29.00	53.0	30.31	51.1	31.71
13	50.2	29.02	53.3	30.27	51.7	31.75
14	49.6	29.19	52.6	30.37	51.5	31.75
15	49.4	27.33	52.0	30.86	50.2	
16	49.8	28.93	51.6	30.86	50.2	31.70
17	50.3	29.37	53.0	30.30	50.6	31.68
18	50.3	29.34	54.2	30.21	50.9	31.36
19	51.0	28.85	54.2		50.8	31.35
20	51.7	29.09	55.0	30.22	51.3	
21			54.5	30.50	52.1	31.94
22	52.0	29.10	54.2	30.50	52.7	31.95
23	51.8	29.02	54.1		52.9	31.66
24	51.8	29.02	54.5	31.24	53.1	31.67
25	51.4	28.26	54.8	31.17	53.5	31.68
26	51.5	28.29	55.5	30.21	54.1	31.35
27	51.6	28.34	55.5	31.60		
28	51.6	29.93	54.6	30.86	55.2	31.36
29	51.4	30.97	53.0	30.91	55.2	
30			54.4	31.17	55.0	30.99
31			55.1	31.60		
1963 Mean	50.2	28.59	53.5	30.39	52.4	31.62
1935-63	48.6	29.35	51.0	30.23	52.8	30.85
1954-63	48.6	29.11	51.0	30.23	52.5	30.64
σ	1.36	0.80	1.97	0.93	1.75	0.79
Class 'n	+2	-1	+2	+0	-0	+2

Amphitrite Point, Barkley Sound

Day of Month	July, 1963		August, 1963		September, 1963	
	Water Temp. °F	Salinity ‰	Water Temp. °F	Salinity ‰	Water Temp. °F	Salinity ‰
1	55.0	31.36	56.1	31.18	58.0	31.49
2	56.0	31.50	57.6	31.10	57.8	31.44
3	56.8	31.35	58.9	30.81	58.2	31.44
4	55.8	30.39	59.0	31.20	57.9	31.44
5	56.6	30.32	58.9	31.18	57.9	31.43
6	57.2	30.86	58.6	31.27	58.1	31.45
7	57.9	30.18	58.6	31.42	58.0	31.46
8	54.9	25.74	58.8	31.67	58.5	30.95
9	56.8	29.20	58.4	31.65	58.5	30.96
10	56.7	29.90	58.1	30.72	58.6	31.45
11	58.5	28.72	58.0	31.45	58.8	31.45
12	57.7	30.58	57.5	31.44	58.5	31.51
13	57.1	30.57	57.0	30.73	58.5	31.51
14	55.2	31.39	56.0	31.45	58.2	30.52
15	55.9	31.45	56.4	31.66	58.2	30.52
16	54.3	31.53	55.9	31.66	57.8	30.52
17	55.6	31.10	55.3	31.46	57.3	31.50
18	54.5	31.44	55.7	31.46	57.0	31.43
19	56.4	31.49	56.7	30.94	57.0	31.44
20	54.9	30.56	56.8	30.93	57.1	30.61
21	55.6	30.06	57.7	31.47	57.0	30.63
22	53.0	30.52	57.9	30.73		
23	56.2	30.58	58.1	30.72		
24	56.4	30.28	58.5	30.72	57.3	30.63
25	57.5	30.96	58.6	31.48	57.2	30.43
26	57.2	31.11	58.1	31.45	57.7	30.60
27	57.7	30.97			57.2	30.61
28	57.8	31.41				
29	57.4		57.9	31.53		
30	56.4	31.03	57.9	31.55	57.5	29.55
31	56.1	31.04	58.0	31.54		
1963 Mean	56.3	30.59	57.6	31.26	57.8	31.04
1935-63	54.6	30.91	55.8	31.01	54.9	30.73
1954-63	54.7	30.80	56.0	30.81	55.5	30.47
σ	2.05	0.69	1.37	0.49	1.38	0.46
Class'n	+0	-0	+2	+1	+3	+2

Amphitrite Point, Barkley Sound

Day of Month	October, 1963		November, 1963		December, 1963	
	Water Temp. °F	Salinity ‰	Water Temp. °F	Salinity ‰	Water Temp. °F	Salinity ‰
1	57.4	30.67	52.8	28.73	51.7	25.86
2	57.5	30.67	52.7	28.74	50.9	25.86
3	57.0	30.50			50.7	25.85
4	57.1	30.51			50.6	25.86
5	57.3	30.50	52.2	28.74	50.4	28.75
6	57.0	30.51	52.3	28.74	50.0	28.73
7	56.9	30.50	52.2	28.74		
8	56.9	29.53				
9	56.6	29.53	52.0	29.13	50.3	28.73
10	56.5	29.54	52.2	28.74	49.7	28.74
11	56.3	29.54			49.1	29.21
12					49.3	25.86
13			51.9	25.85	49.4	25.86
14			51.9	25.85	49.4	25.85
15					49.6	25.85
16	56.4	29.52				
17	56.3	29.52	52.4	29.25	49.4	25.84
18	56.1	29.54	51.8	29.32	49.7	28.45
19	56.0	30.03	51.4	29.47	49.5	28.44
20	55.9	29.68			49.3	28.46
21			53.1	29.21	49.6	28.45
22						
23			53.3	25.85		
24			53.2	25.84		
25						
26	53.4	23.17			50.1	
27	53.0	22.92			49.5	25.87
28			53.0	25.86	49.7	25.86
29			53.1	25.87		
30	53.1	28.73	52.8	25.86		
31	53.0	28.76				
1963 Mean	56.0	29.19	52.4	27.77	49.9	27.12
1935-63	52.6	29.72	49.9	29.04	47.6	28.40
1954-63	52.9	29.49	50.4	28.67	48.0	27.77
$\sigma$	1.54	0.75	2.19	0.79	1.90	0.68
Class 'n	+4	-0	+1	-2	+2	-1

Cape Mudge, Strait of Georgia

Day of Month	January, 1963		February, 1963		March, 1963	
	Water Temp. °F	Salinity ‰	Water Temp. °F	Salinity ‰	Water Temp. °F	Salinity ‰
1			45.3	29.25	46.7	29.52
2			45.3	29.38	46.6	29.38
3	47.2	28.34	45.3	28.07	47.1	29.14
4	47.1	28.31			46.9	28.99
5	47.0	28.33			47.7	29.03
6	47.3	28.43			49.0	29.19
7	46.9	28.28	46.7	28.21	47.4	28.34
8	47.4	28.68	47.0	28.77	47.7	29.00
9	46.0	28.74	47.0	28.66	49.4	29.55
10	46.0	28.84	45.0	28.05	47.8	29.52
11	46.1	29.02	45.2	28.53		
12	44.4	28.31	44.4	27.67	45.5	29.50
13	45.0	28.51	44.9	28.68	45.6	29.75
14	45.0	28.52	46.4	29.18	46.4	29.63
15	45.7	29.00	46.8	29.03	46.0	29.67
16	46.4	28.96				
17	46.2	28.90	46.0	28.10	46.9	29.52
18	45.0	28.65	46.4	28.72	47.1	29.19
19	45.5	28.48	47.7	28.36	46.5	28.60
20	46.4	28.76	48.0	28.28		
21	45.2	28.21	48.2	29.29	49.0	28.70
22	46.6	29.03	47.7	29.46	48.4	29.37
23	46.7	29.04	48.0	29.09	49.0	29.12
24	46.4	29.14	46.9	29.48		
25	46.9	29.30	46.8	28.45	46.3	28.08
26	46.7	29.22	46.9	29.17	47.0	28.73
27	46.6	29.25	45.9	28.94	47.0	28.86
28	46.0	29.33			46.0	28.58
29	42.8	28.68				
30	43.5	28.83			46.5	29.34
31	45.2	29.19			47.6	29.19
1963 Mean	45.9	28.77	46.4	28.73	47.2	29.13
1937-63	44.2	28.58	44.7	28.69	46.1	29.11
1955-63	44.6	28.52	45.2	28.75	46.0	29.00
$\sigma$	1.04	0.33	1.36	0.60	0.80	0.72
Class'n	+2	+1	+1	-0	+3	+0

Cape Mudge, Strait of Georgia

Day of Month	April, 1963		May, 1963		June, 1963	
	Water Temp. °F	Salinity ‰	Water Temp. °F	Salinity ‰	Water Temp. °F	Salinity ‰
1	47.8	29.40	50.0	29.26	54.5	28.96
2	48.0	29.24	49.8	29.37	56.2	28.73
3	47.2	28.92	51.4	28.69	57.0	29.01
4	47.7	28.86	51.6	29.09	53.0	29.04
5	48.4	29.45			57.0	29.03
6	48.5	29.34	53.5	28.24	52.9	28.42
7	48.7	29.15	49.1	28.47	51.0	29.38
8	48.5	29.20	48.5	28.86	50.5	29.67
9	47.4	28.83	48.4	29.15	49.5	29.54
10	46.8	29.42	47.7	29.07	52.9	29.07
11	47.4	29.40	48.2	29.19	51.5	29.10
12	47.5	29.57	49.3	29.18	52.4	29.14
13	47.3	29.58	49.0	29.26	52.0	29.42
14	47.5	29.45	50.0	29.06	54.0	29.50
15	47.5	29.33	50.0	29.33	58.1	28.72
16	48.0	28.76	52.5	28.44	55.5	28.27
17	49.0	28.81	52.9	29.12	58.5	28.57
18	49.0	28.89	60.6	28.59	54.2	29.14
19	48.6	29.08	53.3	28.95	51.9	29.32
20	52.0	29.62	53.5	29.09	54.5	29.19
21	52.2	29.35	55.5	28.88	50.5	29.61
22	49.9	29.36	51.2	29.21	50.0	29.61
23			50.0	29.37	53.1	29.05
24			49.5	29.38	54.0	29.25
25	47.7	29.38	48.6	29.69	56.3	27.57
26	47.7	29.58	49.0	29.67	58.0	26.68
27	47.8	29.66	49.5	29.77	60.8	26.11
28	48.3	29.55	51.3	29.79	63.5	25.28
29	48.8	29.50	51.9	29.69	62.0	25.36
30			55.0	29.30		
31			59.2	29.04		
1963 Mean	48.3	29.28	51.3	29.14	54.7	28.61
1937-63	48.9	29.47	52.6	29.32	56.0	27.91
1955-63	48.4	29.26	52.4	29.23	55.7	27.58
σ	0.72	0.39	1.26	0.43	2.15	0.88
Class 'n	-0	+0	-1	-0	-1	+2

Cape Mudge, Strait of Georgia

Day of Month	July, 1963		August, 1963		September, 1963	
	Water Temp. °F	Salinity ‰	Water Temp. °F	Salinity ‰	Water Temp. °F	Salinity ‰
1	65.7	25.13	56.6	28.21	54.5	28.46
2	60.2	25.56	54.9	28.63	59.3	28.06
3	63.5	26.05	54.5	28.47	56.5	28.32
4	59.3	25.94	57.0	28.17	59.0	27.76
5	59.5	26.87	51.0	29.12	58.4	28.31
6	58.6	25.26	54.0	28.44	53.9	28.61
7	59.0	25.37	55.4	28.16	57.2	27.53
8	58.6	25.39	53.5	28.32	58.8	27.11
9	53.9	27.54	53.2	28.53	59.0	27.29
10	56.0	26.93	57.0	27.98	61.6	26.58
11	57.5	26.25			61.4	27.17
12	54.5	27.44	60.8	29.96	59.2	27.32
13	58.5	26.92	63.0	27.12	58.9	28.35
14	60.4	25.96	65.7	27.11	61.0	27.15
15	58.8	27.45	65.5	26.77	55.0	28.57
16	65.0	25.23	65.6	26.92	57.6	27.94
17	58.0	27.90	62.0	27.47	59.8	27.31
18	58.9	28.34	62.0	26.46	58.8	26.98
19	61.6	26.77	57.0	27.33	55.0	27.22
20	55.0	27.64	55.6	27.66	53.7	28.16
21	56.0	27.08	58.5	26.69	54.8	27.27
22			58.5	26.83	55.0	27.60
23	58.2	25.79	58.7	26.63	54.9	27.69
24	57.3	26.14	57.9	26.89		
25	58.5	26.04	58.0	26.89	56.3	28.05
26	59.0	25.86	61.0	26.62	60.2	27.92
27	60.4	25.91	61.4	26.92	60.0	27.65
28	55.6	27.33	61.4	26.94	61.2	28.01
29	57.9	28.13	62.6	26.65	58.0	27.25
30	53.5	27.52	56.9	27.59	56.0	27.78
31	58.4	28.62	56.4	27.18		
1963 Mean	58.6	26.61	58.5	27.56	57.8	27.70
1937-63	58.0	27.41	57.2	27.88	54.9	28.39
1955-63	57.5	27.13	57.5	27.49	55.2	28.05
$\sigma$	1.28	0.73	0.79	0.59	1.32	0.64
Class 'n	+1	-1	+2	+0	+4	-1

Cape Mudge, Strait of Georgia

Day of Month	October, 1963		November, 1963		December, 1963	
	Water Temp. °F	Salinity ‰	Water Temp. °F	Salinity ‰	Water Temp. °F	Salinity ‰
1	56.2	28.42			47.0	28.84
2	56.7	28.04			48.1	29.16
3	55.7	27.76			47.6	29.08
4	56.5	28.10		27.93	46.5	27.12
5	51.0	29.35		28.32	47.4	28.90
6	52.5	28.71	48.0	28.41	45.7	28.65
7	52.1	28.65			45.0	28.14
8	53.0	28.18	48.9	27.84	46.2	28.73
9	52.4	28.77	49.0	27.85	45.5	28.00
10	55.5	27.61	49.5	27.80	46.2	28.11
11	54.5	28.61	49.4	27.79	46.5	28.26
12			50.0	27.86	46.6	28.32
13	56.0	27.36	48.7	28.15	47.5	29.04
14	53.6	28.85	49.5	28.04	47.2	29.07
15	55.9	28.63	49.9	28.25	47.3	28.83
16	55.2	27.79	49.2	27.55	46.6	28.86
17	54.5	28.59	48.7	28.66	45.9	27.93
18	53.5	28.13	46.0	27.35		
19	51.4	28.45	45.5	28.32		
20			45.0	28.32	47.0	28.46
21			46.0	29.15	46.9	28.29
22	50.0	28.77	45.5	28.51		
23	51.0	28.67	47.5	28.46	47.5	28.77
24	51.0	28.32	47.4	28.60		
25	51.5	28.21			47.3	27.34
26	51.6	27.61	48.5	28.37	47.5	28.26
27	50.0	27.64	48.0	28.19	47.2	28.05
28	51.9	28.21	48.0	28.54	47.4	28.32
29	52.5	28.02	48.0	28.82	47.6	28.31
30	49.2	28.02	47.7	28.79		
31					48.0	28.21
1963 Mean	53.1	28.28	48.0	28.23	46.9	28.42
1937-63	51.1	28.88	47.5	28.79	45.4	28.26
1955-63	51.0	28.74	47.2	28.74	45.6	28.51
$\sigma$	0.92	0.40	1.06	0.61	1.00	0.68
Class 'n	+4	-2	+1	-1	+2	-0

Chrome Island, Strait of Georgia

Day of Month	January, 1963		February, 1963		March, 1963	
	Water Temp. °F	Salinity ‰	Water Temp. °F	Salinity ‰	Water Temp. °F	Salinity ‰
1	45.3	28.07	43.1	28.15	47.0	27.39
2	46.0	27.20	43.4	28.13	47.0	27.98
3	45.6	27.20	45.2	28.60	47.2	27.88
4	43.8	18.14	46.5	28.60	45.7	28.55
5	45.2	25.26	46.8	28.77	46.0	28.35
6	45.5	25.49	47.2	28.78	46.5	28.14
7	45.3	26.63	46.3	24.02	46.7	29.05
8	45.5	26.65	46.0	27.50	47.2	27.82
9	45.5	27.09	46.3	27.48	46.5	27.48
10	44.8	27.29	46.3	27.34	46.0	27.49
11	44.3	27.29	46.1	27.77	46.8	27.94
12	45.0	27.70	46.0	27.75	46.7	27.96
13	45.5	27.71	46.0	28.18	46.2	28.16
14	45.2	27.72	45.8	27.53	46.0	28.18
15	45.5	27.77	45.6	27.60	45.5	28.07
16	45.2	27.69	46.0	27.90	45.0	28.69
17	45.0	27.56	46.2	28.23	45.2	
18	44.2	27.59	46.3	28.26	44.6	28.75
19	42.8	27.52	47.0	28.70	45.5	28.96
20	44.2	27.66	46.8	28.59	46.9	29.01
21	43.8	27.65	47.0	28.17	47.0	29.03
22	44.3	27.77	46.7	28.42	47.1	29.34
23	43.7	27.70	46.4	27.40	46.0	28.38
24	44.2	27.91	46.0	27.46	47.0	28.80
25	44.5	27.90	46.0	28.68	46.8	28.83
26	45.0	28.41	46.2	28.69	47.3	28.87
27	45.0	28.41	45.9	28.63	47.0	28.87
28	44.8	28.19	45.8	28.63	46.5	29.08
29	44.4	28.19			45.9	29.08
30	43.4	28.18			48.4	28.99
31	43.1	28.18			46.3	26.79
1963 Mean	44.7	27.22	46.0	28.00	46.4	28.40
1962-63	44.4	27.99	45.4	28.32	45.4	28.72

## Chrome Island, Strait of Georgia

Day of Month	April, 1963		May, 1963		June, 1963	
	Water Temp. °F	Salinity ‰	Water Temp. °F	Salinity ‰	Water Temp. °F	Salinity ‰
1	46.0	26.65	48.5	29.07	54.0	28.51
2	46.9	28.80	48.7	28.94	55.9	28.14
3	46.7	28.81	49.0	28.76	56.1	27.85
4	47.2	28.87	49.9	28.76	54.0	27.85
5	47.4	28.89	49.4	28.71	57.3	26.71
6	47.9	28.98	50.0	28.54	58.6	26.17
7	47.5	28.84	51.0	28.55	58.2	26.71
8	47.5	28.87	51.5	28.10	57.0	27.28
9	49.0	28.72	52.2	27.15	56.4	27.72
10	48.6	28.50	53.5	25.71	58.0	27.76
11	48.4	28.49	53.0	27.16	58.5	27.61
12	48.1	28.66	53.0	27.13	57.3	27.70
13	48.0	28.70	54.1	27.37	58.9	27.63
14	47.8	27.99	51.6	28.56	60.5	27.67
15	47.4	27.97	50.4	28.55	61.8	27.61
16	47.4	28.01	52.5	27.81	63.4	27.62
17	48.0	28.35	54.8	26.69	65.7	27.58
18	48.2	29.98	57.5	27.46	64.6	27.70
19	49.8	27.21	56.2	27.73	58.0	28.20
20	49.8	27.62	61.0	27.03	59.9	28.02
21	50.5	28.14	59.8	27.50	59.7	28.01
22	52.5	27.71	59.0	28.06	62.0	28.00
23	50.7	28.27	57.9	27.51	61.1	28.01
24	48.2	28.73	57.7	27.53	55.9	28.61
25	49.4	28.75	57.1	27.57	56.8	28.15
26	49.5	28.82	59.2	27.42	57.5	28.10
27	49.9	28.89	57.8	27.64	57.1	28.21
28	49.0	29.08	57.6	27.68	59.0	27.67
29	48.8	29.09	57.8	27.87	60.8	26.79
30	48.0	29.13			58.9	26.84
31			55.0	28.48		
1963 Mean	48.5	28.52	54.2	27.83	58.8	27.68
1961-63	48.1	28.55	53.5	28.05	58.9	26.74

## Chrome Island, Strait of Georgia

Day of Month	July, 1963		August, 1963		September, 1963	
	Water Temp. °F	Salinity ‰	Water Temp. °F	Salinity ‰	Water Temp. °F	Salinity ‰
1	58.9	27.18	64.1	24.95	63.2	27.77
2	59.7	26.21	64.6	24.95	58.8	27.76
3	63.4	25.92	63.8	25.23	60.2	27.72
4	61.4	25.62	65.5	26.72	63.3	26.77
5	60.0	26.55	64.0	26.88	63.6	26.69
6	58.2	27.16	58.5	27.36	60.0	26.64
7	61.2	25.70	64.4	26.20	59.7	26.84
8	57.3	27.01	67.2	25.81	61.1	27.21
9	55.3	27.91	62.8	26.62	62.3	26.69
10	55.4	27.85	67.8	25.59	61.4	27.38
11	55.9	27.75	68.8	25.60	61.0	27.66
12	59.5	26.38	72.0	26.94	58.8	28.31
13	60.6	26.12	68.0	26.85	56.0	28.32
14	57.8	27.65	64.5	27.17	58.2	28.35
15	59.4	27.09	61.5	27.18	57.0	28.59
16	64.8	25.43	64.0	26.52	57.1	27.93
17	63.9	25.90	67.2	27.02	58.4	27.92
18	66.1	25.41	64.0	26.11	58.3	27.55
19	63.7	26.23	62.0	26.90	57.5	27.75
20	55.6	27.89	57.0	27.70	58.6	27.67
21	55.9	27.63	60.7	27.34	56.0	28.83
22	54.2	28.24	61.0	27.28	55.5	28.81
23	57.1	26.10	62.3	27.24	54.5	28.60
24	58.8	25.64	62.0	27.17	54.5	28.60
25	60.0	23.33	61.9	27.07	55.1	28.54
26	61.5	23.83	62.0	27.12	56.0	28.58
27	63.8	22.49	61.4	27.33	59.3	27.09
28	64.5	24.05	62.4	26.91	60.8	26.01
29	64.9	24.07	66.0	26.29	56.6	28.20
30	63.7	24.10	66.1	26.43	56.8	28.14
31	64.5	24.96	65.0	26.56		
1963 Mean	60.2	26.04	64.0	26.61	58.7	27.76
1961-63	62.5	25.56	62.4	26.71	58.7	27.52

Chrome Island, Strait of Georgia

Day of Month	October, 1963		November, 1963		December, 1963	
	Water Temp. °F	Salinity ‰	Water Temp. °F	Salinity ‰	Water Temp. °F	Salinity ‰
1	55.5	28.28	50.5	28.50		
2	54.5	28.66	50.5	28.12	43.3	26.86
3	54.5	28.51	50.2	28.53	43.6	27.17
4	54.5	28.51	50.0	28.50	44.5	27.74
5	55.8	28.04	49.0	28.13	46.5	27.44
6	55.8	27.99	48.0	26.61	46.5	27.84
7	56.0	27.76	49.0	27.86	46.8	28.14
8	54.0	28.55	49.5	27.86	47.0	28.14
9	53.4	28.71	49.5	28.12	46.5	28.01
10	52.6	29.00	49.0	27.87	45.5	27.60
11	53.5	28.92	48.5	27.45	45.8	27.91
12	53.1	29.07	49.2	27.88	45.8	27.84
13	52.2	29.09	49.0	27.36	45.8	27.78
14	52.5	29.09	48.9	27.34	45.2	27.78
15	53.0	28.80	49.0	28.13	45.5	27.78
16	53.1	28.78	48.5	27.97	44.5	28.02
17	54.5	26.97	48.5	28.05	45.5	27.66
18			44.1	27.35	46.5	28.10
19	53.0	28.93	42.0	27.37	46.4	28.08
20	52.0	28.58	42.5	28.02	46.5	28.28
21	51.8	28.68	42.5	28.02	46.4	28.41
22	51.5	28.69	43.5	28.18		
23	51.4	28.13	43.0	28.11	47.5	27.86
24	51.0	28.70	42.5	28.07	46.2	24.72
25	50.6	29.02			46.0	24.84
26	51.0	28.62	48.0	28.10	46.0	27.01
27	51.0	28.63	47.8	28.18	46.5	27.58
28	50.6	28.65	47.8	28.18	46.6	27.55
29	50.8	28.66	47.0	27.64	45.9	27.29
30	50.6	28.28	46.5	27.11	46.7	27.69
31	50.5	28.49			46.8	27.69
1963 Mean	52.8	28.59	47.4	27.88	45.9	27.54
1961-63	51.8	28.50	48.2	28.29	45.9	27.47

Entrance Island, Strait of Georgia

Day of Month	January, 1963		February, 1963		March, 1963	
	Water Temp. °F	Salinity ‰	Water Temp. °F	Salinity ‰	Water Temp. °F	Salinity ‰
1			41.2	27.03	45.2	26.80
2	46.5	25.37	43.0	27.76	45.6	27.53
3	46.8	26.74	45.8	28.28	45.6	26.36
4	45.6	24.68	46.0	28.75	44.8	25.06
5	44.7	23.13	46.8	27.97	46.7	26.13
6	45.1	25.07	47.2	29.25	45.6	25.86
7	43.8	23.12	47.2	25.34	47.2	26.19
8	45.2	25.74	47.8	21.60	46.4	26.29
9	44.8	26.58	47.2	27.73	46.8	26.65
10	44.0	26.55	46.4	26.80	47.0	27.11
11	40.0	27.07	45.8	24.77	46.5	27.60
12	36.4	27.11	43.5	26.18	47.4	27.36
13	43.9	27.28	43.4	25.43	46.0	27.81
14	45.0	27.57	45.0	27.63	46.3	28.36
15	42.3	24.14	45.2	27.84	46.0	28.24
16	41.8	24.14	45.1	27.75	46.5	28.77
17	42.6	25.49	44.8	27.22	46.2	28.86
18	42.0	25.35	45.0	27.55	46.8	28.69
19	40.8	26.04	45.4	27.12	46.9	28.70
20	43.5	27.34	45.6	27.31	47.2	29.40
21	43.5	27.31	46.0	23.06	47.7	29.48
22	44.6	28.07	45.6	20.57	48.2	28.33
23	44.2	27.71	45.5	23.79	46.9	27.12
24	42.6	27.06	45.0	23.20	46.9	27.59
25	43.0	26.94	45.8	27.29	47.2	28.15
26	43.2	27.54	46.0	28.16	48.2	27.94
27	42.2	26.94	45.6	27.21	48.0	28.53
28	41.7	26.98	46.1	27.93	47.0	28.29
29	41.0	25.82			46.6	28.58
30	41.5	26.33			46.5	28.84
31	40.0	25.82			46.5	28.20
1963 Mean	43.1	26.17	45.5	26.45	46.6	27.70
1937-63	44.3	28.01	44.3	28.12	45.0	28.44
1954-63	44.1	27.40	44.4	27.57	45.2	28.08
$\sigma$	0.90	0.68	0.96	0.84	1.01	0.79
Class'n	-2	-3	+2	-2	+2	-1

Entrance Island, Strait of Georgia

Day of Month	April, 1963		May, 1963		June, 1963	
	Water Temp. °F	Salinity ‰	Water Temp. °F	Salinity ‰	Water Temp. °F	Salinity ‰
1	46.8	27.45	50.6	28.25	58.3	27.30
2	46.7	28.06	50.0	27.67	60.0	22.16
3	47.0	28.93	49.8	28.20	62.4	18.11
4	47.5	29.02	50.8	27.85	57.0	27.20
5	48.2	28.94	49.0	28.88	60.2	27.72
6	48.0	28.36	49.7	28.72	60.4	24.59
7	47.8	28.45	49.8	27.98	58.9	25.04
8	47.5	28.76	55.5	23.81	57.9	25.72
9	47.8	28.18	52.7	24.06	57.8	26.17
10	49.2	27.54	54.0	23.88	59.6	24.40
11	48.8	28.10	54.0	24.42	58.8	24.25
12	47.8	27.80	55.0	25.55	57.9	26.03
13	48.0	27.86	54.7	26.05	58.0	26.80
14	48.2	27.76	54.0	26.51	60.7	24.26
15	47.4	27.98	57.0	27.28	63.2	20.78
16	47.6	26.84	54.0	27.28	64.8	21.71
17	48.0	27.17	56.0	25.68	67.0	23.45
18	48.8	27.65	58.3	26.37	62.5	25.26
19	48.7	27.93	64.0	25.63	63.5	26.32
20	49.5	28.19	63.5	26.02	64.0	25.59
21	52.4	27.43	66.0	26.05	63.2	24.78
22	53.0	27.10	57.6	27.41	63.2	22.35
23	50.4	27.05	59.2	27.11	61.7	24.87
24	48.2	28.82	58.2	27.01	55.2	28.48
25	50.2	28.07	58.4	27.03	56.2	27.85
26	52.0	25.12	57.0	26.93	55.4	27.91
27	50.0	26.71	57.2	27.18	56.6	26.86
28	49.6	28.23	57.8	27.21	58.4	23.06
29	50.5	28.26	59.0	27.44	59.2	23.56
30	50.0	28.23	57.8	27.71	57.5	26.43
31			59.5	27.32		
1963 Mean	48.8	27.87	55.8	26.72	60.0	24.97
1937-63	48.1	28.32	53.8	26.47	58.5	23.86
1954-63	48.3	27.91	54.4	26.45	58.7	23.51
σ	0.66	0.60	1.74	0.96	2.49	1.54
Class'n	+1	-0	+1	+0	+1	+1

Entrance Island, Strait of Georgia

Day of Month	July, 1963		August, 1963		September, 1963	
	Water Temp. °F	Salinity ‰	Water Temp. °F	Salinity ‰	Water Temp. °F	Salinity ‰
1	59.9	23.61	64.2	23.95	60.2	26.96
2	61.0	19.86	65.0	24.48	64.1	22.13
3	62.6	18.65	67.2	23.22	66.4	20.20
4	62.2	20.20	65.0	25.02	65.8	21.35
5	61.7	24.10	63.0	25.88	66.5	21.23
6	63.3	20.13	58.0	27.39	62.2	26.38
7	62.0	24.41	64.0	26.36	62.5	25.50
8	60.6	24.05	65.2	25.37	65.0	21.40
9	59.2	26.26	65.4	23.81	67.3	21.85
10	62.4	20.18	65.5	21.21	66.5	21.62
11	63.2	17.66	67.0	20.83	60.8	26.02
12	61.5	22.38	67.8	21.53	63.0	25.26
13	64.8	19.60	62.0	25.29	56.8	28.24
14	64.0	19.50	58.5	27.40	59.0	27.15
15	64.4	19.16	65.4	24.03	61.5	25.63
16	65.1	19.77	66.4	20.52	61.5	22.62
17	66.3	20.63	67.5	17.86	62.8	22.76
18	65.3	21.53	64.7	21.82	62.6	23.71
19	59.8	25.99	61.6	24.23	63.2	23.79
20	56.0	27.35	58.8	26.91	62.0	24.70
21	56.2	27.58	64.8	20.24	58.2	27.62
22	55.8	28.29	64.0		56.4	27.69
23	57.8	26.95	63.8	21.22	55.8	27.97
24	60.2	17.75	62.5	21.26	55.6	28.40
25	62.4	19.42	61.2	24.24	55.0	28.51
26	64.2	20.87	63.4	22.71	58.0	27.49
27	63.0	21.35	63.5	24.49	60.8	24.55
28	64.4	21.36	64.8	24.97	61.6	24.66
29	64.6	23.39	67.2	23.30	61.5	25.12
30	62.6	23.84	68.0	22.30	57.8	27.64
31	62.4	24.75	65.0	24.07		
1963 Mean	61.9	22.28	64.2	23.53	61.3	24.94
1937-63	62.5	23.07	62.4	24.77	58.4	26.09
1954-63	62.6	22.75	62.7	23.95	58.2	25.63
$\sigma$	1.82	0.87	1.72	1.38	1.44	1.12
Class 'n	-0	-1	+1	-0	+4	-1

Entrance Island, Strait of Georgia

Day of Month	October, 1963		November, 1963		December, 1963	
	Water Temp. °F	Salinity ‰	Water Temp. °F	Salinity ‰	Water Temp. °F	Salinity ‰
1	57.6	27.54	50.7	28.72	46.0	25.57
2	60.0	26.93	50.5	28.24	45.0	25.19
3	59.0	25.79	50.7	28.92	45.8	25.85
4	58.8	26.55	50.4	28.75	46.8	26.90
5	56.8	23.38	49.7	27.72	48.0	27.87
6	58.0	22.37	49.0	26.97	47.0	27.36
7	57.0	22.15			46.3	26.99
8	56.2	26.83	49.8	27.78	47.6	27.91
9	54.8	28.17	49.3	27.54	46.5	27.48
10	58.5	24.72	49.9	27.67	44.8	26.07
11	58.8	25.63	48.9	27.18	43.8	25.51
12			49.5	27.83	43.0	25.41
13	53.2	29.06			43.0	25.89
14	53.0	28.99	49.4	25.30	46.3	27.34
15	56.2	27.53	49.0	26.61	47.2	27.85
16	57.0	23.17	49.4	27.44	47.0	28.03
17	56.8	22.42	48.0	25.48	46.0	27.58
18	56.0	23.89	47.8	25.72	47.0	28.33
19	54.8	26.33	47.8	26.37	48.2	28.79
20	52.5	28.55	46.7	26.47	48.3	28.86
21	51.5	28.75	48.0	27.71	48.2	28.85
22	52.0	27.99	48.6	27.91		
23	51.0	28.94	48.8	28.24	49.3	29.44
24	50.7	29.42	47.5	24.80	49.4	29.66
25	50.3	28.18	49.0	28.44	48.5	27.68
26	50.6	27.77	48.5	27.77	46.8	26.32
27	50.7	28.70	46.7	24.79	45.7	25.34
28	50.8	27.89	47.0	25.61	45.9	25.67
29	50.5	25.61	46.2	25.16	45.0	25.17
30	50.6	28.29			46.2	26.99
31	51.3	28.71			46.4	27.20
1963 Mean	54.5	26.68	48.8	27.08	46.5	27.10
1937-63	52.4	27.49	48.1	27.76	45.9	27.71
1954-63	52.1	27.16	48.1	27.36	45.7	27.53
σ	1.16	0.67	1.11	0.60	1.04	0.79
Class'n	+4	-1	+1	-0	+1	-1

## Departure Bay, Strait of Georgia

Day of Month	January, 1963		February, 1963		March, 1963	
	Water Temp. °F	Salinity ‰	Water Temp. °F	Salinity ‰	Water Temp. °F	Salinity ‰
1	46.0	21.94	40.0	26.84	45.2	27.36
2	46.4	24.93	40.0	26.88	44.8	26.88
3	46.1	26.51	41.7	26.98	44.3	27.22
4	44.4	22.70	44.3	20.30	44.3	25.65
5	44.4	23.85	44.9	19.81	45.2	26.33
6	44.8	24.61	46.1	18.95	45.4	26.57
7	44.4	24.90	46.5	23.09	46.2	25.81
8	45.1	25.52	46.3	25.24	46.3	25.97
9	44.3	26.19	46.2	24.58	45.4	26.08
10	41.1	25.31	45.6	25.76	45.1	26.24
11	41.4	25.04	45.7	26.80	46.2	27.23
12	39.9	26.24	45.3	26.69	45.3	27.45
13	39.6	24.81	43.0	24.45	45.2	27.49
14	41.0	24.89	45.3	26.86	45.5	27.19
15	44.8	26.90	45.3	24.19	45.3	27.82
16	45.7	27.66	45.4	24.54	44.9	26.70
17	45.0	27.31	46.2	26.46	44.8	27.96
18	43.0	26.28	45.9	24.94	46.8	28.97
19	42.1	26.74	46.5	24.53	46.1	27.53
20	42.9	27.08	46.4	25.60	46.7	27.03
21	43.5	27.28	45.9	27.13	48.0	25.34
22	43.3	26.28	44.8	22.72	48.5	27.26
23	42.8	27.27	45.4	24.55	46.8	26.92
24	42.1	26.92	44.9	24.96	45.1	26.95
25	42.8	27.11	44.7	23.76	47.0	25.12
26	41.7	27.14	45.6	26.15	46.7	27.42
27	41.3	26.95	45.0	26.60	47.0	22.39
28	41.8	27.18	44.7	22.68	47.0	25.46
29	41.5	27.43			45.5	25.85
30	40.2	27.41			44.9	27.86
31	41.6	27.66			45.8	28.09
1963 Mean	43.1	26.06	44.9	24.72	45.8	26.71
1935-63	43.3	26.58	43.6	26.56	45.2	27.39
1954-63	43.3	25.86	43.6	25.85	44.8	27.03
$\sigma$	0.84	0.98	1.12	1.82	0.88	0.95
Class'n	-0	+0	+2	-1	+2	-0

## Departure Bay, Strait of Georgia

Day of Month	April, 1963		May, 1963		June, 1963	
	Water Temp. °F	Salinity ‰	Water Temp. °F	Salinity ‰	Water Temp. °F	Salinity ‰
1	46.5	28.12	50.0	27.67	59.4	26.39
2	45.9	26.09	49.5	26.85	57.4	27.42
3	45.7	26.78	49.1	27.51	61.6	20.03
4	47.1	26.63			59.7	20.25
5	48.6	25.64			56.7	26.89
6	47.7	22.09	50.5	25.59	56.3	25.95
7	48.2	25.04	50.1	27.31	58.5	24.97
8	48.1	22.29	49.8	26.92	60.0	24.77
9	47.0	26.43	51.3	25.25	56.5	26.92
10	48.6	27.25	52.0	23.88	56.9	25.60
11	49.1	26.90	56.3	24.16	58.7	23.94
12	48.7	25.21	52.8	24.20	57.3	25.96
13	48.1	25.84	53.0	23.87	58.1	26.30
14	48.8	26.36	53.2	25.39	61.0	25.83
15	47.7	26.73	50.5	27.67	63.8	22.77
16	47.4	27.97	53.5	27.24	64.1	22.07
17	48.5	27.75	57.0	25.23	65.7	22.86
18	49.2	27.78	58.7	25.35	64.5	23.43
19	49.0	24.37				
20	51.8	27.57	61.9	26.07	63.7	24.57
21	51.8	26.46	64.0	26.10	62.8	24.15
22	53.7	25.97	62.1	26.52	61.7	24.81
23	51.8	27.03	55.5	27.46		
24			56.5	26.86	60.8	25.56
25	48.7	27.66	56.9	26.98	55.6	27.54
26	49.4	27.75	58.1	27.10	57.1	26.86
27	50.2	27.62	58.0	27.05	56.0	27.48
28	50.7	27.31	58.3	26.97	59.4	22.03
29	51.2	27.39	59.8	27.35		
30	51.0	26.92	59.8	27.71		
31			59.1	27.30		
1963 Mean	49.0	26.45	55.3	26.34	59.7	24.82
1935-63	48.9	27.59	54.7	26.16	59.8	22.91
1954-63	48.8	27.20	54.8	25.84	59.4	22.53
$\sigma$	1.24	0.78	1.89	1.20	2.44	1.57
Class 'n	+0	-2	+0	+0	+0	+2

Departure Bay, Strait of Georgia

Day of Month	July, 1963		August, 1963		September, 1963	
	Water Temp. °F	Salinity ‰	Water Temp. °F	Salinity ‰	Water Temp. °F	Salinity ‰
1			62.0	24.76	63.4	24.30
2	61.7	18.61	64.9	24.69	60.4	26.04
3	63.1	21.90	67.3	21.99	55.8	28.04
4	62.8	20.39	68.1	23.70	63.0	26.75
5	64.2	22.08	65.4	24.92	62.5	25.46
6	65.0	21.20	63.4	25.16	63.9	22.23
7	63.0	23.97	61.0	25.24	63.7	22.32
8	62.4	17.58				
9	59.5	23.65	66.0	21.85	65.5	22.38
10	58.0	26.14	59.9	21.42	66.0	22.45
11	61.4	17.94	65.9	23.20	64.7	24.18
12	62.7	17.69			63.1	25.35
13			66.5	23.38	58.0	27.82
14	60.5	23.80	60.2	26.64		
15	63.6	20.91				
16	65.3	20.81	66.4	22.87	61.2	22.26
17	67.0	20.85			59.5	22.74
18	67.5	21.40	65.6	22.47	58.7	25.07
19	64.7	23.48	63.8	23.85	60.0	24.76
20	62.5	24.35	59.0	26.48	59.4	25.49
21	58.0	26.15	57.2	27.03	59.6	25.97
22	57.0	26.51	59.0	26.82	56.4	27.39
23	56.3	26.86	63.0	21.01	53.6	28.53
24	59.9	19.82	64.2	21.09	55.5	27.93
25	62.1	17.91	61.4	23.96	54.8	28.41
26	62.7	20.36	61.4	22.52	56.4	27.64
27	64.9	21.00	62.5	26.56	54.4	26.17
28	62.8	20.75	65.2	25.45		
29	65.3	21.86	66.6	23.75	61.2	25.32
30			68.2	23.53	59.5	26.41
31	63.7	22.29	66.9	23.54		
1963 Mean	62.4	21.80	63.7	24.00	60.0	25.44
1935-63	64.0	22.30	63.3	24.50	58.9	26.10
1954-63	63.5	21.89	63.0	25.89	58.4	25.53
σ	2.11	1.42	1.78	1.48	1.41	1.16
Class'n	-1	-0	+0	+0	+2	-0

Departure Bay, Strait of Georgia

Day of Month	October, 1963		November, 1963		December, 1963	
	Water Temp. °F	Salinity ‰	Water Temp. °F	Salinity ‰	Water Temp. °F	Salinity ‰
1	57.5	27.55	49.5	25.62		
2	57.5	27.31			44.9	25.77
3	57.8	27.35	48.8	24.65	44.0	25.78
4	56.8	26.15	48.3	23.82	45.0	25.30
5	56.8	20.82	48.0	27.16	46.4	26.58
6			48.5	26.68	46.3	27.48
7	56.2	22.62	47.8	24.34	45.0	26.48
8	56.2	24.82	46.5	23.76	49.0	25.90
9	56.4	25.06	44.4	24.45	45.2	27.01
10	57.6	25.34	49.0	27.15	43.5	26.20
11	57.1	25.88	46.8	24.93	43.4	26.25
12	55.7	26.37	48.2	25.75	42.9	26.08
13	54.4	27.05	47.6	25.39	43.7	26.23
14			48.0	23.42	43.6	25.91
15	55.7	27.39	48.5	25.98	44.5	25.27
16	56.5	22.33			44.0	25.02
17	55.5	22.09			43.2	24.15
18	54.5	24.13	46.5	26.45	43.7	23.47
19	53.8	24.92	47.2	26.92	45.5	24.13
20	52.4	25.28	45.7	26.12	45.7	22.36
21	52.2	25.91	47.2	26.94	45.6	24.10
22	50.8	23.88	46.0	26.01	45.1	19.76
23	50.7	26.42	46.0	25.50	46.7	23.56
24	50.0	21.50			45.5	13.11
25	49.0	25.51	47.1	23.59	47.5	24.73
26	48.5	23.78	48.0	26.81	45.0	17.81
27	48.3	25.37	47.0	27.07	46.0	20.40
28	48.9	25.26	44.9	23.10	45.0	22.73
29	49.5	26.60	45.5	24.95	47.0	
30	49.1	25.87	48.0	25.54	44.4	24.01
31	49.4	22.54			45.1	23.98
1963 Mean	53.6	25.00	47.3	25.46	45.1	24.12
1935-63	52.5	27.08	47.6	26.81	45.0	26.06
1954-63	52.0	26.57	47.4	26.30	44.6	25.78
σ	1.04	0.79	1.08	1.05	0.90	0.96
Class 'n	+3	-4	-0	-1	+1	-3

East Point, Boundary Pass

Day of Month	January, 1963		February, 1963		March, 1963	
	Water Temp. °F	Salinity ‰	Water Temp. °F	Salinity ‰	Water Temp. °F	Salinity ‰
1	47.5	29.89	44.6	28.67	45.9	28.73
2	47.6	30.12	44.8		46.1	29.71
3	47.6	30.10	45.5	29.76	45.9	29.83
4	47.4	29.94	46.2	29.54	45.8	27.13
5	47.3	29.78	46.2	29.51	45.9	27.36
6	47.3	29.73	46.2	27.96	46.2	27.90
7	47.1	29.38	46.0	30.36	46.1	26.22
8	46.7	27.84	46.0	29.51	46.2	27.88
9	45.3	27.05	46.1	29.80	46.6	28.38
10			46.1	29.36	46.3	27.04
11	46.3	29.53	45.8	29.53	46.1	27.64
12			45.7	29.03	46.3	28.16
13	45.9	29.11	45.2	27.77	46.3	28.60
14	45.6	29.81	45.7	28.77	46.3	28.94
15	45.4	28.69	45.3	28.14	46.3	28.99
16	46.2	29.43	45.2	27.79	46.2	29.33
17	46.1	29.41	45.4	27.21	46.3	29.64
18			46.1	29.43	46.2	29.88
19	43.7	27.47	46.1	29.40	46.3	29.99
20	42.8	26.81	46.2	29.36		
21	43.7	27.00	46.3	28.90	46.7	30.02
22	45.0	28.41	46.2	29.15	46.6	29.48
23	44.9	28.34	46.1	29.70	46.5	27.53
24	44.4	28.15	46.2	29.68	46.4	28.03
25	45.0	28.90	46.2	29.68	46.6	29.76
26	45.5	29.49	46.3	29.45	46.5	30.09
27	45.7	29.51	46.2	29.23	46.5	30.15
28			45.9	28.26	46.4	30.28
29	45.3	30.11				
30	45.3	29.94			46.3	30.34
31	45.0	29.93			46.5	30.07
1963 Mean	45.8	29.03	45.8	29.07	46.3	28.86
1954-63	45.1	28.41	44.5	28.24	44.9	28.45
σ	1.02	1.00	1.16	1.25	0.90	1.06
Class'n	+1	+1	+2	+1	+3	+0

East Point, Boundary Pass

Day of Month	April, 1963		May, 1963		June, 1963	
	Water Temp. °F	Salinity ‰	Water Temp. °F	Salinity ‰	Water Temp. °F	Salinity ‰
1	46.4	29.98	47.7	29.91	52.3	28.78
2	46.6	29.46	47.7	29.95	52.0	29.27
3	46.5	29.30	47.9	29.92	51.8	28.69
4	46.8	29.62	47.9	30.08	50.7	28.93
5	46.9	30.04			51.7	24.85
6	46.7	29.87	48.0	30.20	52.0	27.11
7	46.9	29.84	48.2	30.22	52.3	27.76
8	46.8	29.98	48.3	30.13	50.9	28.75
9	47.0	29.94	48.6	29.91	51.2	29.29
10	47.2	29.62	48.6	29.66	51.9	28.22
11	47.1	29.85	48.9	28.35		
12	47.1	29.85	49.0	29.12	51.1	29.29
13	47.4	29.81	49.1	28.59	51.5	29.13
14	47.4	29.47	49.4	28.74	52.7	28.17
15	47.1	28.88	49.3	28.70	57.1	20.48
16	47.1	29.61	49.9	29.17	52.5	28.05
17	47.3	29.13	50.3	26.01	52.4	28.77
18	47.4	28.73	51.7	26.76	53.7	28.29
19	47.4	29.25	52.1	26.71	51.2	29.64
20	47.5	30.19	52.4		50.9	29.96
21	47.6	29.71	50.8	29.04	51.3	29.76
22	47.6	29.57	49.8	29.60	50.5	30.03
23	47.6	29.68	49.5	29.88	50.4	30.21
24	47.4	29.88	49.7	29.90	50.3	30.11
25	47.5	29.99	50.4	29.03	50.3	30.27
26	47.6	29.97	50.7	29.05	50.0	30.21
27	47.7	29.98	50.2	29.51	50.7	28.68
28	48.2	29.47	51.5	28.57	51.5	28.67
29	47.7	29.81	51.4	29.10	51.2	29.14
30	47.8	29.77	50.3	29.80	51.8	28.42
31			51.2	29.78		
1963 Mean	47.2	29.68	49.7	29.15	51.6	28.58
1954-63	46.6	28.35	48.8	27.48	50.9	26.25
σ	1.04	1.24	1.06	1.93	1.36	2.01
Class'n	+1	+2	+1	+1	+1	+2

East Point, Boundary Pass

Day of Month	July, 1963		August, 1963		September, 1963	
	Water Temp. °F	Salinity ‰	Water Temp. °F	Salinity ‰	Water Temp. °F	Salinity ‰
1	51.5	29.88	52.8	29.33	52.0	29.37
2	52.2	27.60	57.2	25.65	52.4	29.53
3	52.6	28.42	58.0	27.70	51.8	29.87
4	53.1	27.99	53.2	28.83	51.5	29.86
5	52.8	28.53	52.8	29.33	51.6	29.71
6	52.1	28.73	51.9	30.14	51.3	29.92
7	51.4	29.29	52.9	29.55	51.1	29.97
8	51.2	29.43	52.4	29.89	52.5	28.03
9	50.9	29.61	53.7	29.39	55.9	29.03
10	51.0	29.54	53.8	28.33	54.0	28.07
11	51.2	29.54	54.2	27.61	53.6	29.06
12	52.7	28.25	53.8	28.38	53.4	29.08
13	56.3	25.09	52.2	29.16	52.8	29.44
14	52.5	29.64	52.2	29.42	52.6	29.25
15	55.2	26.42	53.6	29.23	54.5	28.12
16	53.7	26.67	53.6	29.79	53.2	27.81
17	55.1	26.89	51.7	29.76	53.0	28.39
18	53.6	28.44	51.8	29.72	52.2	29.16
19	52.5	29.32	51.6	29.78	52.2	29.35
20	52.0	29.78	51.2	29.96	52.9	28.84
21	51.4	29.88	51.3	29.98	53.2	28.33
22	51.4	29.84	53.8	28.31	52.1	29.25
23	51.2	30.07	54.3	28.13	52.7	28.69
24	51.6	29.71	53.6	28.50	57.7	25.03
25	52.3	29.09	54.2	28.14	52.4	29.36
26	53.1	27.91	52.8	28.77	51.8	29.61
27	54.7	25.96	55.0	27.04	52.6	27.50
28	60.3	21.87	59.0	20.15	53.2	28.92
29	59.4	24.24	55.8	25.53	52.8	29.04
30	59.3	24.97	52.2	29.48	52.1	29.32
31	57.5	26.12	52.2	29.48		
1963 Mean	53.4	28.02	53.6	28.47	52.8	28.91
1954-63	53.0	25.92	52.9	27.57	52.2	27.60
$\sigma$	1.40	2.02	1.21	1.05	0.71	1.21
Class 'n	+0	+2	+1	+1	+1	+2

East Point, Boundary Pass

Day of Month	October, 1963		November, 1963		December, 1963	
	Water Temp. °F	Salinity ‰	Water Temp. °F	Salinity ‰	Water Temp. °F	Salinity ‰
1	51.6	29.49	50.2	30.20	48.3	28.27
2	51.2	29.94	50.3	29.90	48.5	29.03
3	51.2	30.38	50.2	30.14	48.3	28.99
4	50.7	30.09	50.1	29.95	48.1	29.16
5	50.5	30.19	50.1	30.40	48.7	29.74
6	50.5	30.32	50.1	30.46	48.4	29.44
7	50.7	30.26			47.1	27.22
8			50.2	29.94		
9	51.1	29.81	50.1	29.79	48.0	29.66
10	51.4	29.51	50.1	29.65	47.9	29.81
11	52.4	29.16	50.0	29.59	47.7	26.62
12			49.9	28.97	45.6	25.52
13	50.8	30.09	49.8	28.52	46.8	28.34
14	51.1	30.31	50.2	29.67	47.0	28.21
15	50.9	30.21	50.1	29.84	47.4	28.48
16	50.6	30.29	50.0	29.96	47.7	29.85
17	50.7	30.13	49.8	29.85	47.8	29.84
18	50.7	29.88			47.3	29.96
19	50.9	29.75	48.5	26.57	47.4	29.80
20	50.6	30.04	48.4	28.59	47.4	29.96
21			48.5	28.39	47.4	29.91
22	50.3	30.55	49.2	29.14		
23	50.4	30.09	49.4	29.41	47.6	30.07
24	50.4	30.32	49.4	29.86	47.3	30.11
25	50.2	30.47	49.6	29.91	47.7	30.20
26	50.5	30.33	49.6	30.02	47.5	30.06
27	50.2	30.29	49.6	30.10	47.5	30.14
28	50.2	30.37	49.4	30.01	47.4	28.78
29	50.0	30.20	48.4	29.76	47.2	
30	50.1	30.09	48.3	27.70	47.9	29.57
31	50.2	30.20			47.8	29.01
1963 Mean	50.7	30.10	49.6	29.51	47.6	29.13
1954-63	50.1	28.12	48.2	28.76	46.8	28.60
$\sigma$	0.69	1.32	0.99	0.84	1.00	0.83
Class'n	+1	+3	+2	+1	+1	+1

Race Rocks, Juan de Fuca Strait

Day of Month	January, 1963		February, 1963		March, 1963	
	Water Temp. °F	Salinity ‰	Water Temp. °F	Salinity ‰	Water Temp. °F	Salinity ‰
1	47.1	30.53	43.9	31.70	45.5	30.69
2	47.0	30.88	44.1	31.01	45.6	30.78
3	46.9	30.71	45.0	30.95	45.0	30.75
4	46.9	30.69	45.1	31.01	45.2	30.54
5	46.9	30.70	45.0	31.06	45.4	30.59
6	46.4	30.66	45.7	31.11	45.9	30.66
7	46.5	30.70	45.8	31.25	46.5	30.66
8	46.9	30.89	46.2	31.26	46.8	30.92
9	46.4	30.73	46.1	31.30	47.0	30.98
10	46.6	30.68	46.3	31.34	46.6	31.21
11	45.0	30.57	46.2	31.33	46.3	31.64
12	45.8	30.61	45.9	31.31	46.8	31.21
13	45.3	30.48			46.2	31.08
14	45.8	30.53	45.7	31.14	46.6	30.87
15	46.2	30.57	45.5	30.59	46.4	30.68
16	46.0	30.42	45.9	30.51	46.5	30.70
17	45.7	30.43	45.2	30.64	45.9	30.83
18	44.3	30.45	45.5	30.22	45.9	30.56
19			45.5	30.01	45.9	30.33
20	44.7	30.24	45.6	30.21	46.1	30.42
21	44.8	30.32	45.5	30.38	46.8	30.56
22	44.7	30.23	45.7	30.80	46.7	30.88
23	44.9	30.53	45.8	30.68	46.9	31.26
24	45.4	30.89	45.6	30.92	46.7	31.43
25	45.3	30.97	45.8	31.08	46.4	31.82
26	45.1	31.33	46.0	31.19	46.4	31.86
27	45.2	31.34	46.1	31.80	46.3	31.87
28	44.3	31.52	45.8	31.46	45.9	31.83
29	43.9	31.69			45.9	31.87
30	43.8	31.45			45.7	31.26
31	43.3	31.51				
1963 Mean	45.6	30.77	45.6	30.97	46.2	31.02
1942-63	45.2	31.03	45.0	31.01	45.4	31.15
1954-63	45.2	30.82	45.2	30.89	45.6	31.03
σ	0.91	0.26	1.13	0.25	1.20	0.28
Class 'n	+0	-0	+0	+0	+1	-0

Race Rocks, Juan de Fuca Strait

Day of Month	April, 1963		May, 1963		June, 1963	
	Water Temp. °F	Salinity ‰	Water Temp. °F	Salinity ‰	Water Temp. °F	Salinity ‰
1	46.4	31.13	47.2	30.97	51.7	30.97
2	46.1	31.16	47.5	31.00	51.0	31.08
3	46.0	31.04	48.2	31.11	51.8	30.97
4	46.7	31.13	49.0	30.97	50.9	30.82
5	46.7	31.07	49.4	30.92	50.7	31.23
6	46.6	31.01	49.5	31.03	51.1	31.29
7	46.9	31.13	49.6	31.05	50.6	30.97
8	47.0	31.33	49.6	31.05	50.0	31.19
9	47.3	31.54	49.4	31.09	50.7	31.25
10	47.9	31.41	48.7	31.18	50.5	31.36
11	47.9	31.16	49.4	31.21	50.4	31.39
12	47.3	31.23	49.6	31.21	50.3	30.93
13	47.2	31.12	49.4	31.28	50.3	30.95
14			49.0	31.25	50.6	30.91
15	46.1	30.93	48.5	31.37		
16	46.8	30.79	49.3	30.74	50.8	31.04
17	46.8	30.76	49.4	30.74	52.5	30.75
18	46.9	30.77	50.0	30.83	52.0	31.13
19	47.3	30.67	50.8	30.79	50.3	31.30
20	48.4	30.89	50.6	30.99	50.2	31.43
21	48.5	31.02	50.7	31.03	51.0	31.60
22	48.6	31.15	50.9	31.29	49.6	31.74
23	48.3	31.17	50.7	31.56	49.4	31.72
24	47.6	31.32	49.5	31.70	49.0	31.78
25	48.4	31.27	49.8	31.65	49.5	31.81
26	48.0	31.13	49.7	31.82	49.7	31.61
27	47.5	31.06	49.0	31.67	50.2	31.33
28	48.2	31.35	49.2	31.08	49.0	31.55
29	47.6	31.04	49.0	31.61	49.5	31.51
30	47.7	30.84			49.9	31.18
31			50.2	31.17		
1963 Mean	47.3	31.09	49.4	31.18	50.4	31.27
1942-63	46.9	31.35	48.7	31.40	50.1	31.24
1954-63	47.1	31.16	48.8	31.26	50.1	31.11
$\sigma$	1.03	0.23	0.98	0.19	0.81	0.29
Class'n	+0	-0	+1	-0	+0	+1

Race Rocks, Juan de Fuca Strait

Day of Month	July, 1963		August, 1963		September, 1963	
	Water Temp. °F	Salinity ‰	Water Temp. °F	Salinity ‰	Water Temp. °F	Salinity ‰
1	51.1	31.09	54.0	29.02	52.0	30.89
2	50.3	30.95	54.0	29.24	52.2	31.12
3	50.4	30.99	53.5	29.94	51.7	31.29
4	50.4	31.00	52.4	30.34	51.4	31.60
5	50.8	31.16	52.4	31.05	49.7	31.81
6	50.9	31.22	51.5	31.35	50.3	31.88
7	50.3	31.19	50.6	31.39	49.8	32.01
8	50.1	31.52	51.0	31.46	49.6	31.81
9	49.6	31.65	49.9	31.71	49.9	31.74
10	49.8	31.71	51.0	31.58	50.8	31.75
11	49.9	31.66	50.4	31.59	50.9	31.34
12	50.7	31.35	51.0	31.53	50.9	31.27
13	50.8	31.38	50.9	31.36	51.3	31.47
14	51.1	31.32	52.5	31.32	51.8	31.20
15	50.6	31.11	52.4	31.35	51.8	31.52
16	51.0	30.89	51.6	31.53	51.6	31.58
17	51.0	30.92	52.0	31.72	50.9	31.56
18	51.1	31.29	50.2	31.95	50.2	31.85
19	51.5	31.15	50.6	31.83	50.9	31.56
20	50.4	31.45	51.0	31.84	50.2	31.57
21	50.0	31.60	50.0	31.86	51.1	31.43
22	50.4	31.53	51.3	31.68	50.7	31.12
23	50.4	31.69	50.9	31.54	50.7	31.27
24	50.4	31.59	50.3	31.63	51.8	30.92
25	50.9	31.49	50.6	31.48	52.2	30.91
26	51.8	31.21	51.3	31.24	51.8	30.94
27	51.4	31.35	52.0	30.98	52.1	30.83
28	52.0	30.96	52.0	30.91	52.1	30.76
29	51.7	30.65	52.7	30.58	51.6	30.81
30	53.6	29.53	52.0	30.93	51.6	30.92
31	54.0	29.46	52.0	30.82		
1963 Mean	50.9	31.17	51.5	31.18	51.1	31.36
1942-63	51.1	31.07	51.4	31.17	50.8	31.28
1954-63	51.2	30.85	51.3	31.06	50.8	31.14
$\sigma$	1.07	0.30	0.80	0.18	0.58	0.21
Class'n	-0	+2	+0	+1	+1	+2

## Race Rocks, Juan de Fuca Strait

Day of Month	October, 1963		November, 1963		December, 1963	
	Water Temp. °F	Salinity ‰	Water Temp. °F	Salinity ‰	Water Temp. °F	Salinity ‰
1	51.2	30.89	50.5	31.35	48.8	30.80
2	51.4	31.32	50.9	31.39	48.8	30.94
3	51.1	31.18	50.5	31.59	48.5	31.03
4	49.5	31.94	50.4	31.42	48.7	30.83
5	48.5	32.37	50.2	31.40	48.7	30.81
6	49.5	31.70	50.1	31.30	48.5	30.83
7	50.0	31.60	50.2	31.23	48.2	30.73
8	50.1	31.56	50.6	31.26	48.3	30.69
9	50.5	31.50	50.6	31.22	47.6	30.61
10	50.4	31.45	50.9	31.24		
11	50.5	31.70	50.0	31.15	47.5	30.44
12	50.4	31.38	50.7	31.09	47.6	30.44
13			50.4	30.84	47.2	30.51
14	51.2	31.35	50.2	31.17	47.4	30.51
15	50.2	31.33	50.0	31.06	47.6	30.44
16	50.8	31.71	50.0	30.94	47.6	30.91
17	50.2	31.52	49.5	30.87	46.8	30.61
18	50.7	31.37	49.6	30.84	47.2	30.82
19	50.4	31.33	49.5	30.85	47.5	30.89
20	50.0	31.41			47.4	30.96
21	50.2	30.33	49.2	30.94	47.5	31.03
22	50.0	31.19	49.8	30.94	47.5	30.98
23	50.5	31.04	49.7	30.77	47.7	30.83
24	50.7	31.03	49.5	30.72	47.5	31.01
25			49.8	30.66	47.7	31.07
26	51.0	31.00	49.5	30.45	47.5	30.89
27	50.6	31.03	49.3	30.72	47.5	30.72
28	52.0	31.16	49.1	30.49	47.6	30.87
29	51.2	31.09	48.8	30.63	47.3	30.93
30	51.8	31.22	48.7	30.75	47.5	31.05
31	51.5	31.18			47.6	31.02
1963 Mean	50.6	31.34	49.9	31.04	47.8	30.81
1942-63	49.4	31.39	47.7	31.34	46.3	31.07
1954-63	49.4	31.23	47.7	31.12	46.3	30.90
$\sigma$	0.69	0.21	1.17	0.25	1.19	0.25
Class'n	+3	+1	+3	-0	+2	-0

Fraser River, New Westminster, B.C.

Day of Month	January	February	March	April	May	June
	Water Temp. °F	Water Temp. °F	Water Temp. °F	Water Temp. °F	Water Temp. °F	Water Temp. °F
			1 9 6 3			
1	40.9	35.6	41.1	42.7	48.7	55.1
2	42.7	35.1	40.9	42.7	43.0	54.7
3	42.1	33.9	40.5	42.7	43.0	53.9
4	42.9	34.0	38.6	43.0	44.6	54.5
5	42.0	37.7	37.5	43.0	45.9	54.5
6	41.2	41.5	37.9	43.1	47.2	54.0
7	41.9	41.5	38.5	43.0	46.7	55.1
8	40.5	41.5	38.5	43.5	47.2	54.2
9	41.2	42.0	38.5	44.5	48.9	54.6
10	38.5	39.6	39.0	45.1	49.0	55.1
11	33.5	40.2	39.5	45.5	49.5	55.2
12	33.2	41.0	39.6	45.4	49.9	54.9
13	32.9	39.5	40.2	45.2	50.5	50.9
14	32.0	40.2	40.2	45.1	50.2	51.2
15	35.6	40.0	40.5	45.0	51.7	54.0
16	36.5	39.8	40.5	45.0	52.0	56.1
17	40.1	39.7	41.0	44.5	52.2	56.7
18	38.7	39.0	41.0	44.5	53.2	57.9
19	37.8	41.5	41.0	44.9	53.6	58.5
20	35.8	40.0	40.9	44.6	53.9	58.0
21	37.4	40.5	41.1	43.8	54.5	57.9
22	37.4	40.2	40.1	43.5	55.0	57.6
23	39.2	40.1	40.9	43.9	55.5	57.0
24	37.4	40.1	42.0	44.0	55.5	57.5
25	38.3	39.9	44.0	44.9	55.6	57.0
26	35.6	41.2	43.5	45.9	54.9	57.5
27	34.7	40.5	44.7	46.2	55.2	56.5
28	33.6	41.0	44.1	47.1	54.9	56.4
29	33.8		43.1	48.9	54.5	56.1
30	34.7		43.7	49.2	55.0	56.0
31	35.6		42.7		55.5	
1963 Mean	37.7	39.5	40.8	44.7	51.2	55.6
1928-63	37.6	37.3	40.4	44.9	50.2	55.8
1954-63	38.3	38.4	40.2	44.5	50.1	55.2
$\sigma$	1.99	2.01	1.74	1.13	1.64	2.39
Class'n	-0	+1	+0	+0	+1	+0

Fraser River, New Westminster, B.C.

	July	August	September	October	November	December
Day of Month	Water Temp. °F	Water Temp. °F	Water Temp. °F	Water Temp. °F	Water Temp. °F	Water Temp. °F
1	56.6	61.0	63.9	59.7	47.5	39.9
2	57.1	61.5	63.9	59.5	47.1	39.5
3	58.0	61.9	63.9	59.1	46.8	39.1
4	58.9	62.5	64.5	58.5	46.9	39.5
5	59.7	63.5	65.9	57.9	47.1	39.9
6	60.1	63.9	65.0	57.4	47.0	39.9
7	60.2	63.9	65.2	56.5	47.0	39.5
8	61.0	64.1	65.7	55.5	46.5	40.3
9	61.1	65.7	65.2	55.1	46.3	40.3
10	60.9	65.8	65.1	54.7	46.0	39.0
11	60.4	66.6	65.1	54.7	45.8	38.5
12	60.0	67.1	65.5	54.8	45.5	37.6
13	60.1	67.5	65.2	54.9	45.1	37.7
14	60.5	67.1	65.0	55.2	45.8	37.2
15	59.8	66.1	64.1	56.1	45.9	37.4
16	59.1	67.1	62.5	55.9	45.9	38.7
17	59.1	67.0	61.5	56.1	45.9	38.9
18	59.7		61.1	55.2	45.3	38.6
19	60.8	67.0	61.0	54.1	44.9	38.4
20	61.3	65.0	60.5	54.0	43.5	38.9
21	61.7	64.5	60.3	53.0	42.3	38.9
22	61.2	64.0	60.0	53.1	41.1	39.7
23	61.5	63.1	59.7	49.0	40.8	41.0
24	60.2	62.9	59.2	49.5	41.1	42.5
25	60.1	62.9	59.5	50.9	42.0	42.0
26	60.2	62.4	60.0	49.7	43.1	41.9
27	60.9	62.9	59.2	48.6	43.6	41.4
28	61.4	62.9	59.8	48.1	43.5	40.6
29	61.5	63.1	60.0	48.1	42.0	40.4
30	61.0	64.0	60.0	47.9	40.6	40.2
31	60.5	63.9		47.5		40.2
1963 Mean	60.1	64.4	62.6	53.9	44.7	39.6
1928-63	60.8	63.1	59.8	52.0	44.0	39.7
1954-63	60.5	63.0	59.3	51.1	43.5	40.0
$\sigma$	2.62	2.25	1.47	1.40	2.00	1.36
Class'n	-0	+1	+4	+4	+1	-0

East Point

Monthly Mean Seawater Salinities (S ‰)

Year	Jan	Feb	Mar	Apr	May	Jun	Jul	Aug	Sep	Oct	Nov	Dec
1953							27.86	28.88	28.50	29.12	29.88	29.02
1954	29.17	29.06	28.84	29.33	29.14	28.52	28.02	28.20	28.17	28.68	28.07	28.03
1955	27.99	27.00	28.08	28.59	29.40	27.83	27.92	26.98	27.67	29.13	29.66	28.09
1956	29.41	29.11	29.33	28.75	26.48	24.24	25.74	28.64	27.64	27.34	28.31	28.29
1957	28.30	29.93	29.72	27.90	24.60	25.18	23.82	25.90	25.12	27.75	28.60	28.67
1958	28.34	27.61	27.80	27.29	24.24	23.89	23.96	26.62	27.81	25.28	26.98	<u>26.80</u>
1959	26.59	26.12	26.29	25.69	25.79	23.78	22.55	27.04	28.02	26.87	28.32	<u>28.57</u>
1960	26.92	26.71	27.26	27.50	27.97	24.45	24.15	26.33	25.51	<u>27.95</u>	<u>28.90</u>	<u>29.29</u>
1961	<u>28.43</u>	<u>28.17</u>	<u>28.54</u>	28.58	28.63	27.38	27.01	28.56	28.66	<u>29.03</u>	<u>29.49</u>	<u>30.02</u>
1962	<u>29.95</u>	<u>29.61</u>	<u>29.81</u>	30.17	29.39	28.66	27.96	28.96	28.44	29.12	29.78	29.08
1963	29.03	29.07	28.86	29.68	29.15	28.58	28.02	28.47	28.91	30.10	29.51	29.13
1954												
-63	28.41	28.24	28.45	28.35	27.48	26.25	25.92	27.57	27.60	28.12	28.76	28.60

Monthly Mean Seawater Temperatures (°F)

Year	Jan	Feb	Mar	Apr	May	Jun	Jul	Aug	Sep	Oct	Nov	Dec
1953							53.5	53.2	53.6	50.5	49.1	47.7
1954	45.9	44.7	45.1	46.0	48.5	49.3	51.3	51.8	51.4	49.3	48.4	47.5
1955	46.1	45.2	44.5	45.6	47.3	49.3	50.6	52.7	51.5	49.2	47.0	45.0
1956	44.4	43.8	44.4	45.2	49.0	49.5	51.5	51.6	51.7	48.9	46.4	45.0
1957	44.5	44.2	44.3	46.0	48.7	52.0	52.4	52.1	52.3	51.1	49.4	47.4
1958	46.4	45.8	46.8	48.2	51.4	53.5	54.2	54.8	52.6	50.4	48.4	47.8
1959	45.3	44.9	44.7	45.4	47.8	49.8	54.3	54.2	51.9	49.9	47.9	46.8
1960	42.9	41.8	43.7	47.9	48.5	51.0	53.3	51.2	51.1	<u>50.2</u>	<u>47.9</u>	<u>46.7</u>
1961	<u>44.3</u>	<u>43.6</u>	<u>44.4</u>	47.7	49.0	52.2	55.2	54.4	53.2	50.6	48.0	46.7
1962	45.6	45.4	45.0	46.7	48.5	51.2	53.3	52.8	53.1	50.4	49.4	47.8
1963	45.8	45.8	46.3	47.2	49.7	51.6	53.4	53.6	52.8	50.7	49.6	47.6
1954												
-63	45.1	44.5	44.9	46.6	48.8	50.9	53.0	52.9	52.2	50.1	48.2	46.8

East Point

Classification of Monthly Mean Seawater Salinities  
(Units of  $\frac{1}{2}$  Standard Deviations)

Year	Jan	Feb	Mar	Apr	May	Jun	Jul	Aug	Sep	Oct	Nov	Dec
1953							+1	+2	+1	+1	+2	+1
1954	+1	+1	+0	+1	+1	+2	+1	+0	+0	+0	-1	-1
1955	-0	-2	-0	+0	+2	+1	+2	-1	+0	+1	+2	-1
1956	+1	+1	+1	+0	-1	-2	-0	+2	+0	-1	-1	-0
1957	-0	+2	+2	-0	-3	-1	-2	-3	-4	-0	-0	-0
1958	-0	-1	-1	-1	-3	-2	-1	-1	+0	-4	-4	
1959	-3	-3	-4	-4	-1	-1	-2	-1	-0	-1	-1	-0
1960	-3	-2	-2	-1	+0	-1	-1	-2	-3			
1961				+0	+1	+1	+1	+1	+1	+1	+1	+3
1962	+3	+2	+2	+3	+2	+2	+2	+2	+1	+1	+2	+1
1963	+1	+1	+0	+2	+1	+2	+2	+1	+2	+3	+1	+1
Std. Devn.	1.00	1.25	1.06	1.24	1.93	2.01	2.02	1.05	1.21	1.32	0.84	0.83

Classification of Monthly Mean Seawater Temperatures  
(Units of  $\frac{1}{2}$  Standard Deviations)

Year	Jan	Feb	Mar	Apr	May	Jun	Jul	Aug	Sep	Oct	Nov	Dec
1953							+0	+0	+4	+1	+1	+1
1954	+1	+0	+0	-1	-0	-2	-2	-1	-2	-2	+0	+1
1955	+2	+1	-0	-2	-2	-2	-3	-0	-1	-2	-2	-3
1956	-1	-1	-1	-2	+0	-2	-2	-2	-1	-3	-3	-3
1957	-1	-0	-1	-1	-0	+1	-0	-1	+0	+3	+2	+1
1958	+2	+2	+4	+3	+4	+3	+1	+3	+1	+1	+0	+1
1959	+0	+0	-0	-2	-1	-1	+1	+2	-0	-0	-0	-0
1960	-4	-4	-2	+2	-0	+0	+0	-2	-3			
1961				+2	+0	+1	+3	+2	+3	+1	-0	-0
1962	+0	+1	+0	+0	-0	+0	+0	-0	+2	+1	+2	+1
1963	+1	+2	+3	+1	+1	+1	+0	+1	+1	+1	+2	+1
Std. Devn.	1.02	1.16	0.90	1.04	1.06	1.36	1.40	1.21	0.71	0.69	0.99	1.00