

KAWKAWA CREEK

For map, refer to
COQUIHALLA RIVER
page 44

NAME OF STREAM KAWKAWA CREEK Sucker Creek
 CONSERVATION DISTRICT 2 STATISTICAL AREA Chilliwack
 LOCATION OF MOUTH Flows SW. from Kawkawa L. into Coquihalla R., at Hope,
Yale Dist. POSITION 49 121 SE
 LENGTH 1.0 MI. WIDTH 15 FT. DRAINAGE 5.0 SQ. MI.
 COMPOSITION: BEDROCK _____ BOULDER 5 COARSE 10 FINE 25
 SILT & SAND 60 UNCLASSIFIED _____

GRADIENT:

FALL IN FT/000

0.0 - 2.5	throughout
2.5 - 5.0	
5.0 - 7.5	
7.5 - 10.0	
> 10.0	

WETTED AREA 8800 SQ. YD. SPAWNING AREA 1300 SQ. YD.DISCHARGE 30 cfs (est.) -/04/71

TEMPERATURE _____

BARRIERS OR POINTS OF DIFFICULT ASCENT A permanent wooden plank type coarse fish barrier, operated by Fish and Game Branch, is located approximately 500 feet upstream from the mouth. This installation is open during salmon migration.

SPAWNING DISTRIBUTION:

SPECIES	SECTION OF STREAM USED
SÖCKEYE	Lower 100 yards
CHINOOK	
COHO	Lower 200 yards and above Kawkawa Lake
CHUM	Lower 200 yards
PINK (ODD YR)	Lower 200 yards (majority) and above Kawkawa Lake
PINK (EVEN YR)	
STEELHEAD	

POTENTIAL OF INACCESSIBLE PORTION OF STREAM _____

GENERAL REMARKS:

- Tributary to Coquihalla at 1.25 mi.
- 75% of stream is swamp area.
- Stream drains Kawkawa Lake which was poisoned and restocked with trout in 1960.
- Residential and summer homes surround the lake.
- The 1970 coho run spawned in 5 small tributary streams above the lake.
- Kawkawa Lake has an area of approximately 0.75 sq. mi.



Kawkawa Creek - coarse
fish barrier

ESCAPEMENT RECORD FOR

KAWKAWA CREEK

Sucker Creek

YEAR	SOCKEYE	CHINOOK	COHO	CHUM	PINK ¹	PINK ²
1947	200		75		1500	
48			200	75		
49	200		75	50	1500	
50	200		200	50		
51	75		200	400	2500	
52	50		200	400		
53	50		75	50	3000	
54	50		75	50		
55	75		200	75	700	
56	50		50	50		
57	50		75	50	400	317
58	700		75	75		
59	75		75	75	1500	1279
60	50		50	50		
61	75		75	50	200	502
62	75		75	50		
63	75		50	50	200	104
64	50		200	50		
65	50		200	50	200	31
66	50		200	50		
67	75		200	50	750	211
68	12		71	50		
69	50		600	50	600	322
70	200		2000	300		
71	200		300	100	1400	1243
72						
73						
74						
75						
76						
77						
78						
79						
80						
81						
82						
83						
84						
85						
Time						
Start	E Nov		E Oct	E Oct	L Sep	
Peak	M Nov		E Nov	M Oct	Oct 9-16	
End	L Nov		L Nov	M Nov	E Nov	

REMARKS

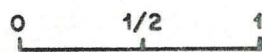
Timing of entry, Pink - First fish Sep 20 (approx.)
 - Last fish Oct 18 (approx.)

1 FISHERIES SERVICE escapements.

2 I.P.S.F.C. escapements.



LONZO CREEK



Scale in miles

NAME OF STREAM LONZO CREEK Marshall Creek
 CONSERVATION DISTRICT 2 STATISTICAL AREA Chilliwack
 LOCATION OF MOUTH Flows N. and E. into Sumas R., New Westminster Dist.
 POSITION 49 122 SE.
 LENGTH 4.0 MI. WIDTH 13 FT. DRAINAGE 10.0 SQ. MI.
 COMPOSITION: BEDROCK _____ BOULDER _____ COARSE _____ FINE 15
 SILT & SAND 85 UNCLASSIFIED _____

GRADIENT:
 FALL IN FT/000

0.0 - 2.5	throughout
2.5 - 5.0	
5.0 - 7.5	
7.5 - 10.0	
> 10.0	

WETTED AREA 30000 SQ. YD. SPAWNING AREA 4500 SQ. YD.
 DISCHARGE _____ CFS MAX 124.0 12/12/60 MIN 11.9 06/10/63

TEMPERATURE _____
 BARRIERS OR POINTS OF DIFFICULT ASCENT _____

SPAWNING DISTRIBUTION:

SPECIES	SECTION OF STREAM USED
SOCKEYE	
CHINOOK	
COHO	Scattered in upper reaches of 2 tributaries and Kilgard.
CHUM	
PINK (ODD YR)	
PINK (EVEN YR)	
STEELHEAD	

POTENTIAL OF INACCESSIBLE PORTION OF STREAM _____

GENERAL REMARKS: Est. discharge: 50.0 c.f.s. 04/71; 1961 mean 29.7 cfs.
 - Heavy silting in lower half of stream from industrial and farmland waste (milk producing plant, refrigerated food packers, slaughterhouse and food storage).
 - British Columbia Fish and Wildlife Branch operate a trout hatchery on the spring-fed south branch.
 - A small dam was constructed 2.0 mi. from the mouth in 1961 and incorporated a step to provide proper access for migrating coho. Dam has since been removed.



Lonzo Creek

Lonzo Creek looking
downstream 1.0
mile from mouth



Lonzo Creek looking
upstream 1.0 mile
from mouth

LORENZETTA CREEK

For map, refer to
WAHLEACH CREEK
page 148

NAME OF STREAM LORENZETTA CREEK
 CONSERVATION DISTRICT 2 STATISTICAL AREA Chilliwack
 LOCATION OF MOUTH Flows W. into Fraser R., near mouth of Wahleach Cr.,
Yale Dist. POSITION 49 121 SW.
 LENGTH 1.5 MI. WIDTH 18 FT. DRAINAGE 10.0 SQ. MI.
 COMPOSITION: BEDROCK _____ BOULDER 7 COARSE 8 FINE 10
 SILT & SAND 75 UNCLASSIFIED _____

GRADIENT:

FALL IN FT/000	
0.0 - 2.5	throughout
2.5 - 5.0	
5.0 - 7.5	
7.5 - 10.0	
> 10.0	

WETTED AREA 16000 SQ. YD. SPAWNING AREA 2900 SQ. YD.
 DISCHARGE 30 cfs (est.) -/04/71

TEMPERATURE _____

BARRIERS OR POINTS OF DIFFICULT ASCENT Beaver dams and brush
throughout lower reaches; opened annually to allow passage of salmon.

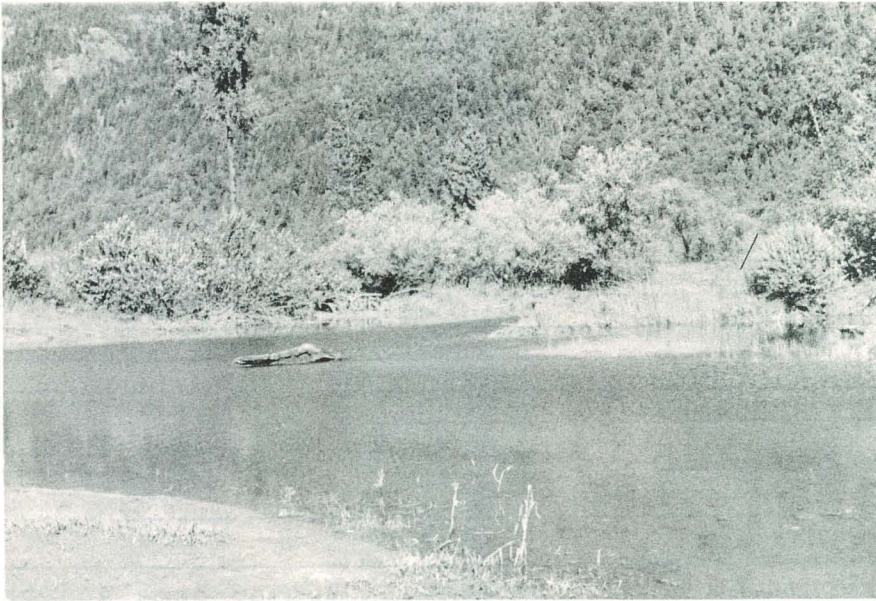
SPAWNING DISTRIBUTION:

SPECIES	SECTION OF STREAM USED
SOCKEYE	
CHINOOK	
COHO	upper 800 yds.
CHUM	scattered in lower creek.
PINK (ODD YR)	upper 800 yds.
PINK (EVEN YR)	
STEELHEAD	

POTENTIAL OF INACCESSIBLE PORTION OF STREAM _____

GENERAL REMARKS:

- In 1957 stream was put into one channel.
- Heavy silting in lower half.
- Coho fry utilize deeper slow moving lower half of stream for rearing.
- Lower 1.0 mile passes through farmland.
- No Tributaries.



Mouth of Lorenzetta Creek



Lorenzetta Creek downstream from highway 1

ESCAPEMENT RECORD FOR LORENZETTA CREEK

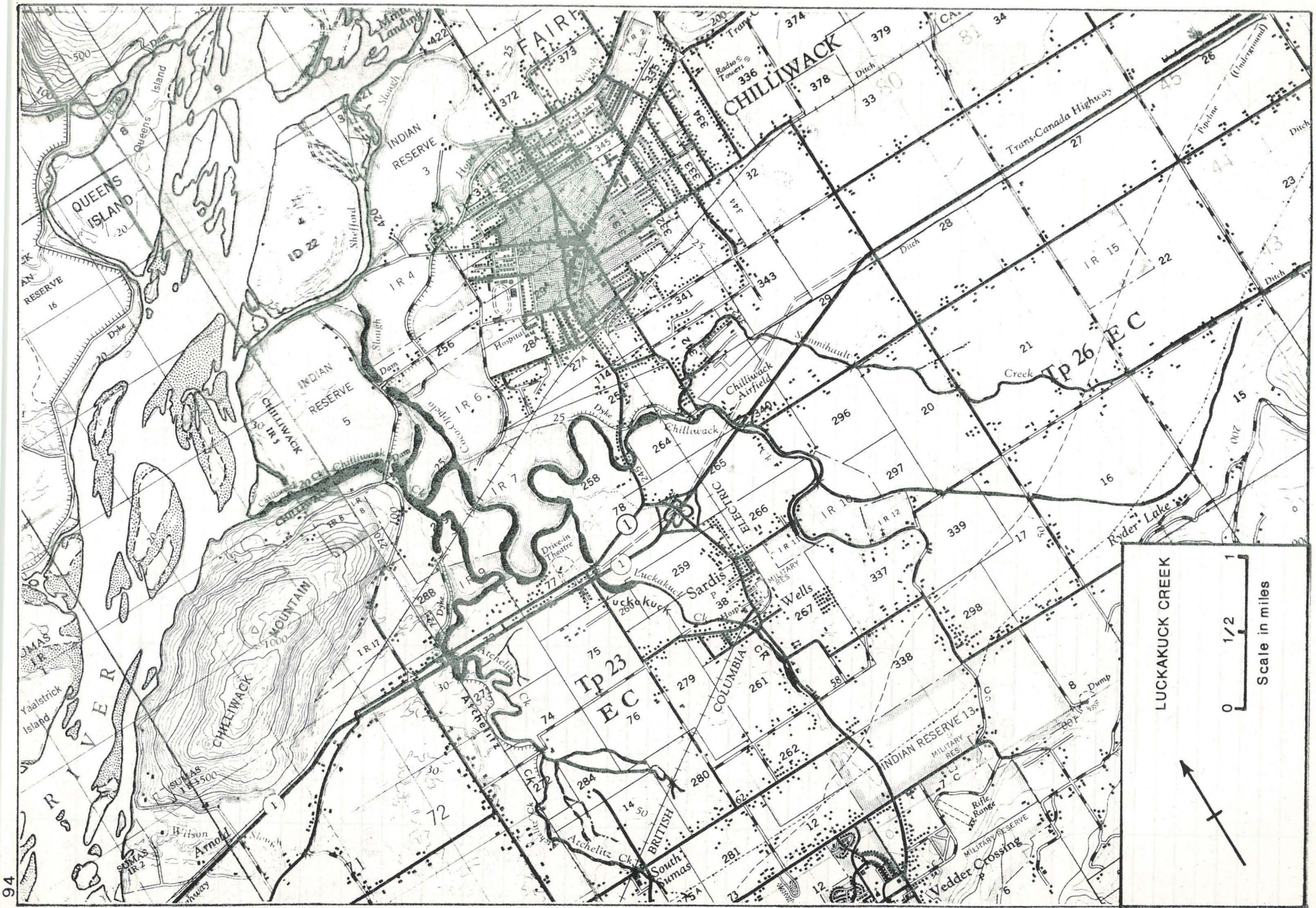
Lorenzetti Creek

YEAR	SOCKEYE	CHINOOK	COHO	CHUM	PINK ¹	PINK ²
1947			75		3000	
48			150	75		
49			75	50	200	
50			200			
51			200	50	50	
52			750	50		
53			75	50	50	
54			200			
55			200	50	50	
56			75	50		
57			200	50	50	6
58			200	50		
59			200	50	400	991
60			200	50		
61			200	50	50	218
62			400	50		
63			75	50	50	13
64			200	50		
65			200	50	50	8
66			75	50		
67			100	50	273	273
68			60	50		
69			300	50	150	
70			800	50		
71			150	50	100	
72						
73						
74						
75						
76						
77						
78						
79						
80						
81						
82						
83						
84						
85						
Time						
Start			L Oct	L Sep	M Sep	
Peak			M Nov	M Oct	M Oct	
End			L Dec	L Oct	L Oct	

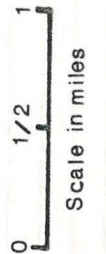
REMARKS

1 FISHERIES SERVICE escapements.

2 I.P.S.F.C. escapements.



LUCKAKUCK CREEK



NAME OF STREAM LUCKAKUCK CREEK Luck-A-Kut Creek
 CONSERVATION DISTRICT 2 STATISTICAL AREA Chilliwack
 LOCATION OF MOUTH Flows N. into Chilliwack Cr., S. of Chilliwack,
New Westminster Dist. POSITION 49 121 SW.
 LENGTH 2.0 MI. WIDTH 16 FT. DRAINAGE 2.0 SQ. MI.
 COMPOSITION: BEDROCK _____ BOULDER _____ COARSE 10 FINE 55
 SILT & SAND 35 UNCLASSIFIED Pools near Wells Road

GRADIENT:
 FALL IN FT/000

0.0 - 2.5	1.0 - 3.5 mi.
2.5 - 5.0	
5.0 - 7.5	0.0 - 1.0 mi.
7.5 - 10.0	
> 10.0	

WETTED AREA 19000 SQ. YD. SPAWNING AREA 12500 SQ. YD.
 DISCHARGE 50 cfs (est.) -/04/71

TEMPERATURE _____
 BARRIERS OR POINTS OF DIFFICULT ASCENT Nil.

SPAWNING DISTRIBUTION:

SPECIES	SECTION OF STREAM USED
SOCKEYE	
CHINOOK	
COHO	} Main spawning takes place in game sanctuary in the upper .5 mile
CHUM	
PINK (ODD YR)	
PINK (EVEN YR)	
STEELHEAD	

POTENTIAL OF INACCESSIBLE PORTION OF STREAM Nil.

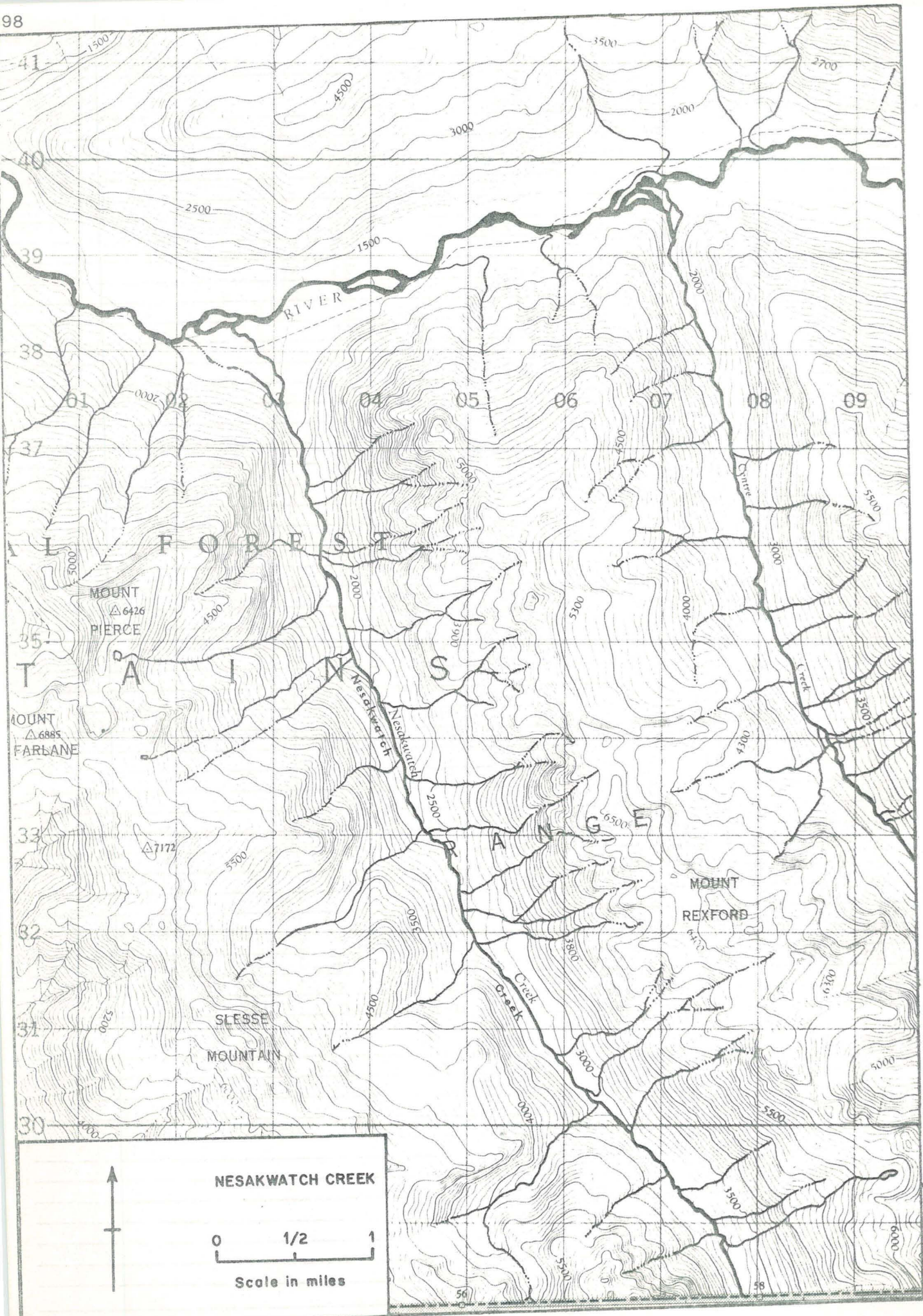
GENERAL REMARKS:
 - Stream fed from an underground source .5 mi. from Sardis.
 - Stream receives waste from milk producing plant.
 - Residential area around most of stream.
 - Water is clear in upper reaches.
 - Luckakuck Creek is joined by Semmihault Creek, Little Chilliwack Creek and Atchelitz west of Chilliwack - of these streams only Atchelitz is reported on separately. Chilliwack Creek has few coho and Semmihault Creek has no spawning.



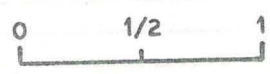
Luckakuck Creek - downstream from freeway



Luckakuck Creek - upstream towards freeway



NESAKWATCH CREEK



Scale in miles

NAME OF STREAM NESAKWATCH CREEK Middle Creek
 CONSERVATION DISTRICT 2 STATISTICAL AREA Chilliwack
 LOCATION OF MOUTH Flows NW. into Chilliwack R., W. of Chilliwack L., Yale Dist.
 POSITION 49 121 SW
 LENGTH 3.0 MI. WIDTH 30 FT. DRAINAGE 30.0 SQ. MI.
 COMPOSITION: BEDROCK _____ BOULDER 65 COARSE 10 FINE 23
 SILT & SAND 2 UNCLASSIFIED _____

GRADIENT:

FALL IN FT/000	
0.0 - 2.5	
2.5 - 5.0	
5.0 - 7.5	
7.5 - 10.0	
> 10.0	throughout

WETTED AREA 53000 SQ. YD. SPAWNING AREA 16000 SQ. YD.
 DISCHARGE 125 cfs (est.) -/04/71

TEMPERATURE _____
 BARRIERS OR POINTS OF DIFFICULT ASCENT Log jam 1.0 mile above mouth stops most salmon, although some coho migrate upstream.

SPAWNING DISTRIBUTION:

SPECIES	SECTION OF STREAM USED
SOCKEYE	
CHINOOK	
COHO	scattered 0.0-3.0 mi
CHUM	0.0-1.0 mi
PINK (ODD YR)	0.0-1.0 mi majority spawn near mouth
PINK (EVEN YR)	
STEELHEAD	

POTENTIAL OF INACCESSIBLE PORTION OF STREAM Negligible above 1.0 mi., many boulders and high velocity.

GENERAL REMARKS:
 - The lower mile has good gravel.
 - A log jam was formed at 1.0 mile against the logging trestle.
 - Logging has been carried on in this valley since 1940. A logging road follows the creek to headwaters on the U. S. border.



Nesakwatch Creek - looking downstream
from 1.0 mile



Nesakwatch Creek - looking upstream
from 1.0 mile

ESCAPEMENT RECORD FOR NESAKWATCH CREEK Middle

YEAR	SOCKEYE	CHINOOK	COHO	CHUM	PINK ¹	PINK ²
1947						
48						
49					750	
50						
51						
52						
53						
54						
55						
56						
57						
58						
59						528
60						
61						434
62						
63						2904
64						
65			200		3000	3531
66			200			
67			125	300	2300	2304
68			200	1000		
69			174	150	300	156
70			200	75		
71				200	400	554
72						
73						
74						
75						
76						
77						
78						
79						
80						
81						
82						
83						
84						
85						
Time						
Start			E Nov	M Oct	E Oct	
Peak			L Nov	L Nov	Oct. 14-20	
End			M Dec	M Dec	L Nov	

REMARKS

Timing of entry, Pink - First fish Oct 4 (approx.)
 - Last fish Oct 19 (approx.)

1 FISHERIES SERVICE escapements.
 2 I.P.S.F.C. escapements.

PALEFACE CREEK

For map, refer to
UPPER CHILLIWACK RIVER
page 30

NAME OF STREAM PALEFACE CREEK
 CONSERVATION DISTRICT 2 STATISTICAL AREA Chilliwack
 LOCATION OF MOUTH Flows W. into Chilliwack L., Yale Dist.
 POSITION 49 121 SE
 LENGTH 2.0 MI. WIDTH 15 FT. DRAINAGE 20.0 SQ. MI.
 COMPOSITION: BEDROCK _____ BOULDER 60 COARSE 15 FINE 15
 SILT & SAND 10 UNCLASSIFIED _____

GRADIENT:
 FALL IN FT/000

0.0 - 2.5
2.5 - 5.0
5.0 - 7.5
7.5 - 10.0
> 10.0

WETTED AREA 17,600 SQ. YD. SPAWNING AREA 5,300 SQ. YD.
 DISCHARGE 75 cfs (est.) -/04/71

TEMPERATURE _____

BARRIERS OR POINTS OF DIFFICULT ASCENT Boulders, logs and small falls, 2-3 ft. drop approx. 2.0 mi. from mouth; passable.

SPAWNING DISTRIBUTION:

SPECIES	SECTION OF STREAM USED
SOCKEYE	
CHINOOK	
COHO	0.0-2.0 mi
CHUM	
PINK (ODD YR)	0.0-2.0 mi.
PINK (EVEN YR)	
STEELHEAD	

POTENTIAL OF INACCESSIBLE PORTION OF STREAM _____

GENERAL REMARKS:

- Logging is in progress on this stream. A logging camp has been set up near the mouth and a logging road follows the creek to headwaters.



Paleface Creek
looking upstream
(mid-reaches)



Paleface Creek
looking downstream
from logging
bridge



Paleface Creek looking
upstream at logging
bridge

ESCAPEMENT RECORD FOR PALEFACE CREEK

YEAR	SOCKEYE	CHINOOK	COHO	CHUM	PINK ¹	PINK ²
1947						
48						
49						
50						
51						
52						
53						
54						
55						
56						
57						
58						
59						
60						
61						
62						
63						172
64						
65			75		75	39
66			50			
67			50		50	101
68			50			
69						
70			50			
71						
72						
73						
74						
75						
76						
77						
78						
79						
80						
81						
82						
83						
84						
85						
Time						
Start			M Oct		M Oct	
Peak			E Nov		L Oct	
End			E Dec		E Nov	

REMARKS

1 FISHERIES SERVICE escapements.

2 I.P.S.F.C. escapements.

POPKUM CREEK

For map, refer to
WAHLEACH SLOUGH
page 156

NAME OF STREAM Popkum Creek
 CONSERVATION DISTRICT 2 STATISTICAL AREA Chilliwack
 LOCATION OF MOUTH Flows N. into Fraser R. from Cheam L., W. of Cheam Pk.,
Yale Dist. POSITION 49 121 SW.
 LENGTH 2.0 MI. WIDTH 9 FT. DRAINAGE 15.0 SQ. MI.
 COMPOSITION: BEDROCK _____ BOULDER _____ COARSE 30 FINE 25
 SILT & SAND 45 UNCLASSIFIED _____

GRADIENT:
 FALL IN FT/000

0.0 - 2.5	0.5 mi-Lake
2.5 - 5.0	
5.0 - 7.5	
7.5 - 10.0	
> 10.0	0.0-0.5 mi

WETTED AREA 10500 SQ. YD. SPAWNING AREA 5800 SQ. YD.
 DISCHARGE 10 cfs (est.) -/04/71

TEMPERATURE _____
 BARRIERS OR POINTS OF DIFFICULT ASCENT None.

SPAWNING DISTRIBUTION:

SPECIES	SECTION OF STREAM USED
SOCKEYE	
CHINOOK	
COHO	throughout
CHUM	
PINK (ODD YR)	
PINK (EVEN YR)	
STEELHEAD	

POTENTIAL OF INACCESSIBLE PORTION OF STREAM _____

GENERAL REMARKS:
 - 1962 flood caused up to 2 ft. of shale to be deposited on upper spawning grounds.
 - Spawning stream reports have been discontinued since 1967; no coho adults have been observed in the creek for years but coho fry have been seen.
 - Popkum Lk. covers an area of approx. 20 acres, however the lake has been partially drained to facilitate mining for lime from the lake bottom.
 - Good spawning areas exist both above and below lake.

[Faint, illegible text, likely bleed-through from the reverse side of the page. The text is mirrored and difficult to decipher.]

ESCAPEMENT RECORD FOR

Popkum Creek

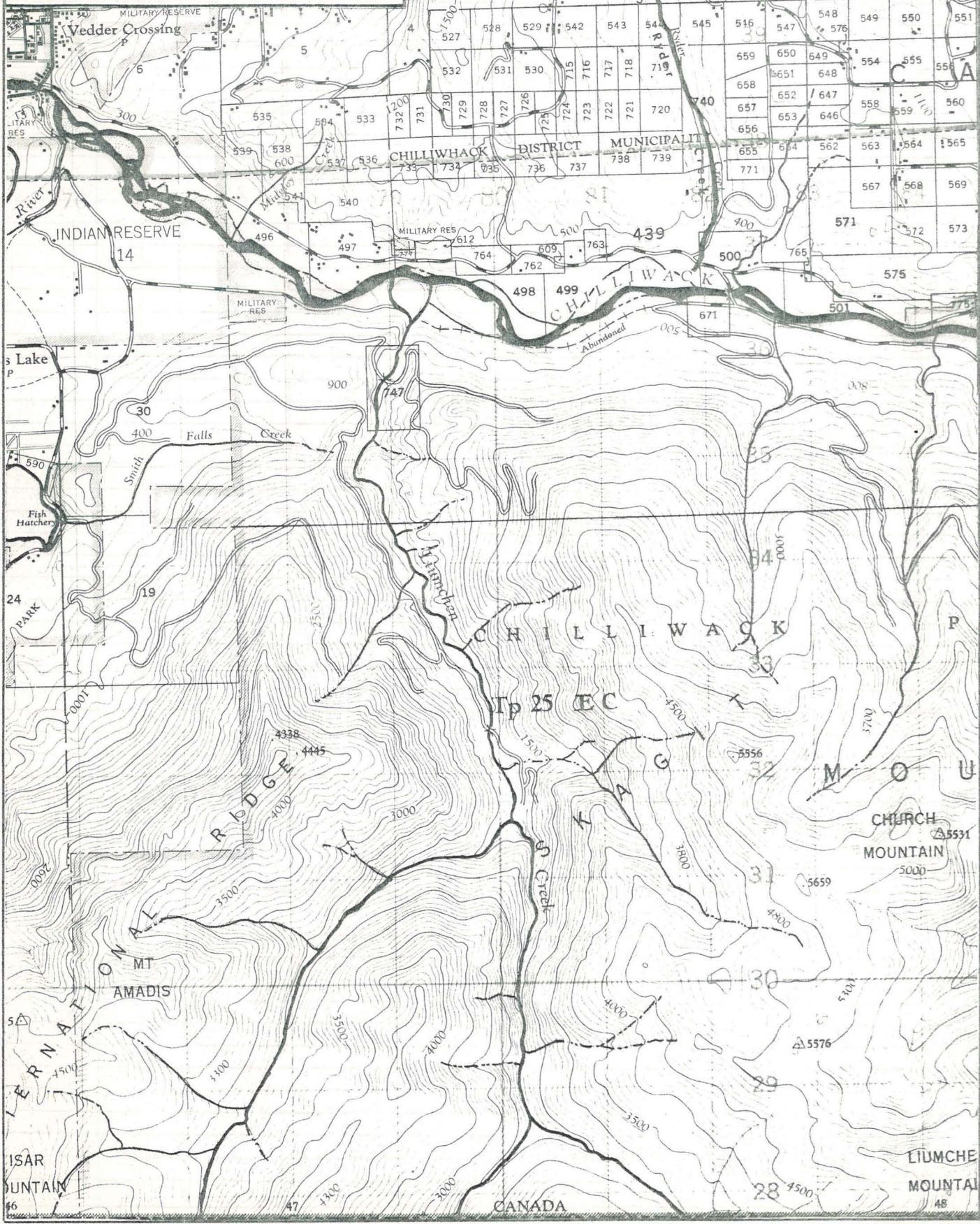
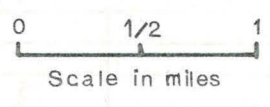
YEAR	SOCKEYE	CHINOOK	COHO	CHUM	PINK ¹	PINK ²
1947						
48			25			
49			75		75	
50			75			
51			25			
52			75			
53			25			
54			200			
55			75			
56			25			
57			75			
58			25			
59			75		25	57
60			75			
61			25		25	
62			75			
63			25		25	
64			25			
65						
66						
67						
68			Discontinued			
69						
70						
71						
72						
73						
74						
75						
76						
77						
78						
79						
80						
81						
82						
83						
84						
85						
Time						
Start			E Nov			
Peak			L Nov			
End			M Dec			

REMARKS

1 FISHERIES SERVICE escapements.
 2 I.P.S.F.C. escapements.



RYDER CREEK



NAME OF STREAM RYDER CREEK
 CONSERVATION DISTRICT 2 STATISTICAL AREA Chilliwack
 LOCATION OF MOUTH Flows S. into Chilliwack R., New Westminster Dist.
 POSITION 49 121 SW.
 LENGTH 1.0 MI. WIDTH 13 FT. DRAINAGE 5.0 SQ. MI.
 COMPOSITION: BEDROCK _____ BOULDER 5 COARSE 10 FINE 35
 SILT & SAND 50 UNCLASSIFIED _____

GRADIENT:
 FALL IN FT/000

0.0 - 2.5
2.5 - 5.0
5.0 - 7.5
7.5 - 10.0
> 10.0

WETTED AREA 7600 SQ. YD. SPAWNING AREA 3400 SQ. YD.
 DISCHARGE 30 cfs (est.) -/04/71

TEMPERATURE _____
 BARRIERS OR POINTS OF DIFFICULT ASCENT Logs and brush at 1.0 mile ;
passable.

SPAWNING DISTRIBUTION:

SPECIES	SECTION OF STREAM USED
SOCKEYE	
CHINOOK	
COHO	0.0-1.0 mi. ; few to 1.5 mi.
CHUM	0.0-.75 mi.
PINK (ODD YR)	0.0-.75 mi.
PINK (EVEN YR)	
STEELHEAD	

POTENTIAL OF INACCESSIBLE PORTION OF STREAM _____

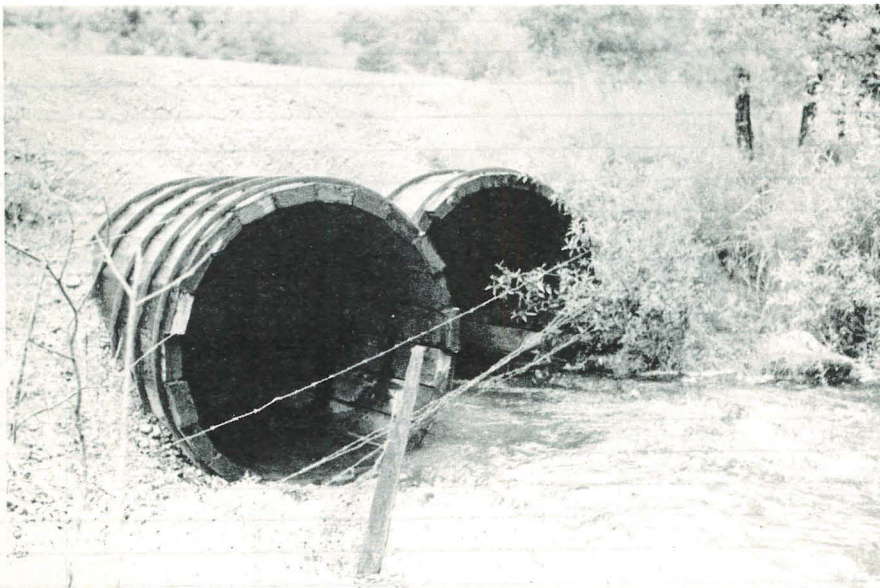
GENERAL REMARKS:
 - Upper Creek accessible by road from Ryder Lake residential area and is surrounded by housing developments and farm lands.
 - Lower Creek on Chilliwack Lake road becoming a residential area.
 - Several small beaver dams on lower creek are opened annually to allow passage of coho fry.
 - Stream above 1.5 mile has high gradient and is bouldery.



Ryder Creek
downstream
from highway
0.25 mi from
mouth



Ryder Creek
upstream
from highway
0.25 mi from
mouth



Ryder Creek culvert
at highway 0.25 mi
from mouth

ESCAPEMENT RECORD FOR RYDER CREEK

YEAR	SOCKEYE	CHINOOK	COHO	CHUM	PINK ¹	PINK ²
1947						
48			50			
49			50			
50						
51						
52						
53						
54						
55						
56						
57						
58						
59						
60						
61						
62						
63						
64						
65			75	50		
66			75	50		
67			75	400	700	871
68			80	1000		
69			250	150	50	
70			200	50		
71			200	500	300	
72						
73						
74						
75						
76						
77						
78						
79						
80						
81						
82						
83						
84						
85						
Time						
Start			E Dec	E Nov	E Oct	
Peak			M Dec	M Nov	L Oct	
End			L Dec	L Dec	M Nov	

REMARKS _____

1 FISHERIES SERVICE escapements.
 2 I.P.S.F.C. escapements.

SALWEIN CREEK

For map, refer to
CHILLIWACK-VEDDER RIVER
page 28

NAME OF STREAM Salwein (Woodruff) Creek
 CONSERVATION DISTRICT 2 STATISTICAL AREA Chilliwack
 LOCATION OF MOUTH Flows S. into Vedder R. near Sumas Prairie Rd.
 POSITION 49 121 SW
 LENGTH 2.0 MI. WIDTH 10 FT. DRAINAGE 1.0 SQ. MI.
 COMPOSITION: BEDROCK _____ BOULDER _____ COARSE _____ FINE 25
 SILT & SAND 75 UNCLASSIFIED _____

GRADIENT:

FALL IN FT/000

0.0 - 2.5	throughout
2.5 - 5.0	
5.0 - 7.5	
7.5 - 10.0	
> 10.0	

WETTED AREA 11700 SQ. YD. SPAWNING AREA 3000 SQ. YD.DISCHARGE 30 cfs (est.) -/04/71

TEMPERATURE _____

BARRIERS OR POINTS OF DIFFICULT ASCENT Fishway, 100 yds. from mouth forms
difficult passage during certain water levels.

SPAWNING DISTRIBUTION:

SPECIES	SECTION OF STREAM USED
SOCKEYE	
CHINOOK	
COHO	1.5-2.0 mi., and top of pond area
CHUM	mouth to dam (100 yds)
PINK (ODD YR)	mouth to dam (100 yds)
PINK (EVEN YR)	
STEELHEAD	

POTENTIAL OF INACCESSIBLE PORTION OF STREAM _____

GENERAL REMARKS:

- In 1952 R.C.S.M.E. built a dam and fishway at the lower end of this stream. In 1960 the facility was rebuilt and improved. It is now generally satisfactory for fish migration except during high water. During heavy runoff the velocity is so great, fish have trouble negotiating the ladder, however, the water recedes quickly and the fish are able to pass without too much delay.
- Chums enter the stream in November. Coho enter in November and through the winter to the end of January. They enter in groups and only at times of heavy rains.
- Coho fry rear in the upper creek and pond area.
- Salwein Creek flows through farm land and is subject to silting from land erosion.
- A few cutthroat enter the stream in early spring to spawn.

GENERAL REMARKS: (Cont'd)

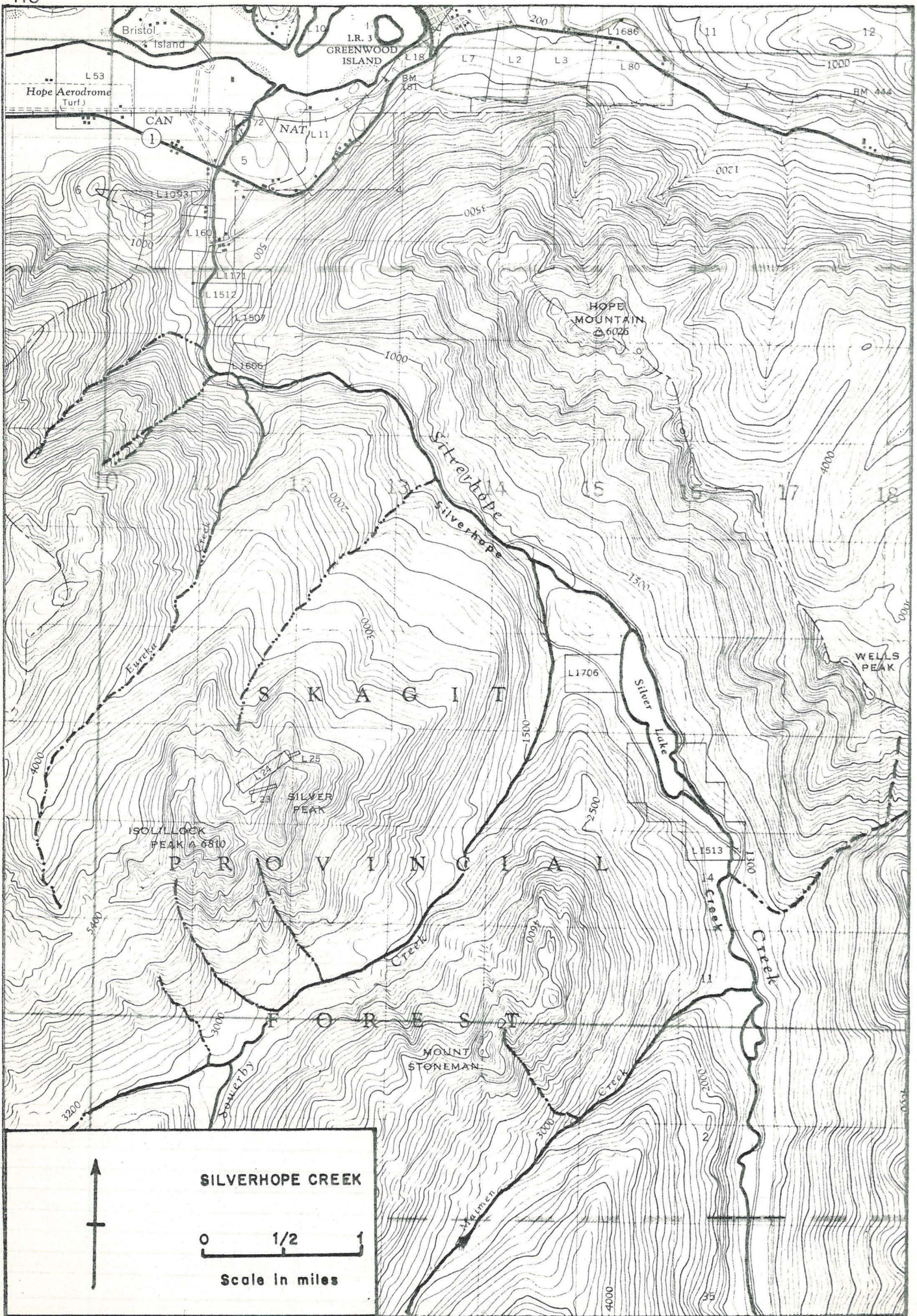
- Water color is brownish from peat land in the area of the upper creek.
- Tributaries: Webster Creek: a small stream 1.0 mile x 3.0 feet enters Salwein Creek at B. C. Hydro Railway. Only coho use this tributary and is entirely silt except for a short distance at the extreme upper end.
- Flow at spawning time is constant in the spawning area in the upper stream.



Salwein Fishway



Salwein Fishway



NAME OF STREAM SILVERHOPE CREEK Silver Creek
 CONSERVATION DISTRICT 2 STATISTICAL AREA Chilliwack
 LOCATION OF MOUTH Flows N. into Fraser R., W. of Hope, Yale Dist.
 POSITION 49 121 SE
 LENGTH 2.5 MI. WIDTH 42 FT. DRAINAGE 80.0 SQ. MI.
 COMPOSITION: BEDROCK 4 BOULDER 58 COARSE 20 FINE 11
 SILT & SAND 7 UNCLASSIFIED _____

GRADIENT:

FALL IN FT/000

0.0 - 2.5	
2.5 - 5.0	
5.0 - 7.5	
7.5 - 10.0	
> 10.0	throughout

WETTED AREA 61600 SQ. YD. SPAWNING AREA 19100 SQ. YD.
 DISCHARGE 584.0* CFS MAX 4500.0 02,27/09/48 MIN 96.0 17-23/09/66

TEMPERATURE _____

BARRIERS OR POINTS OF DIFFICULT ASCENT Impassable falls at 2.5 mi.
approx. 8 ft. drop over 10 ft. Falls also at 5.5 miles, 10 ft. drop over 10 ft.
These falls are impassable to all fish except steelhead.

SPAWNING DISTRIBUTION:

SPECIES	SECTION OF STREAM USED
SOCKEYE	
CHINOOK	
COHO	0.0 - 2.5 mi.
CHUM	0.0 - 2.5 mi.
PINK (ODD YR)	0.0 - 2.5 mi.
PINK (EVEN YR)	
STEELHEAD	0.0 - 20.0 mi.

POTENTIAL OF INACCESSIBLE PORTION OF STREAM Upper Silver Creek averages 34 ft.
in width and contains excellent potential spawning gravel (200,000 sq. yds.). At
present, only a few steelhead utilize this area. Theoretical adult coho production
is estimated at 8400 fish.

GENERAL REMARKS: Silverhope Creek up to the lake (6.0 mi.) has steep gradient,
large boulders and falls. Silver Lake is 2.0 mi. long x 0.5 mi. wide. Upper Silver
Creek is accessible to fish for approx. 12.0 mi. and is clear and clean, the composition
being 40% coarse, 50% fine, 5% silt and sand, & 5% boulders.

- In 1962 R.C.S.M.E. together with Fish and Game volunteers cleared outlet of
 Silver Lake and carried out blasting at the falls; 2 yrs. previously some clearing
 had been done by R.C.S.M.E. (may have helped steelhead)

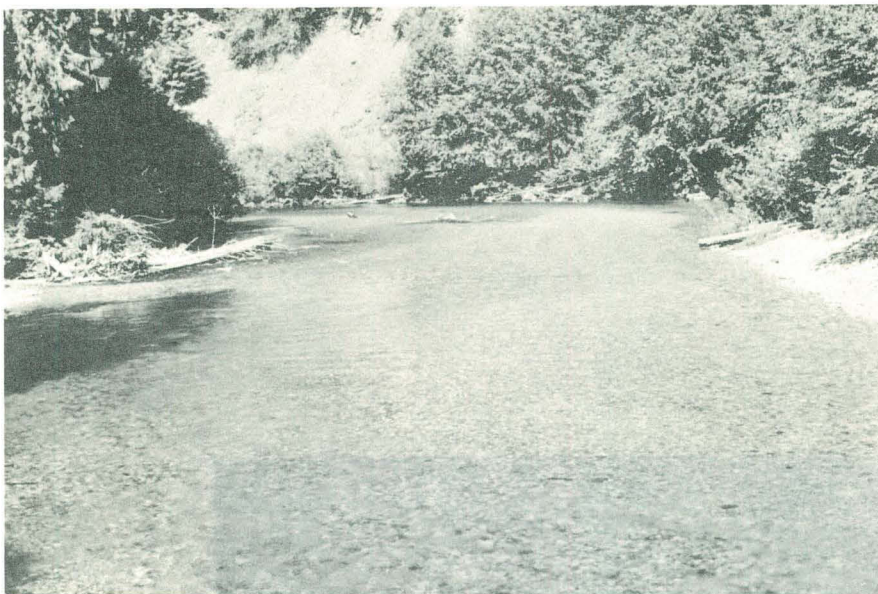
- Sport fishing is carried out in this stream for steelhead and coho.

* Discharge -2 yrs. data only (66 & 67)



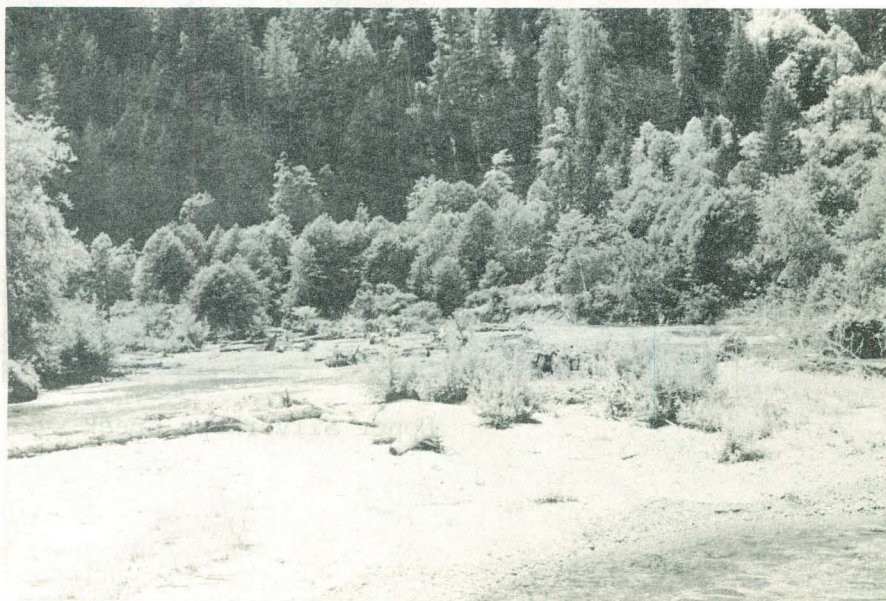
Silverhope Creek

Silverhope Creek
looking upstream at
5.0 miles



Upper Silverhope
Creek looking
downstream from
0.5 mi above Silver
Lake

Upper Silverhope
Creek above lake
looking upstream
approx. 0.5 mi
above lake





Silverhope Creek - first falls



Upper Silverhope
Creek looking
downstream from
0.5 mi. above Silver
Lake



Upper Silverhope Creek

ESCAPEMENT RECORD FOR SILVERHOPE CREEK Silver Creek

YEAR	SOCKEYE	CHINOOK	COHO	CHUM	PINK ¹	PINK ²
1947			200	75	1000	
48			200	400		
49			50	75	1500	
50	25		200	200	750	
51			200	200	750	
52			75	750	50	
53			200	75	1500	
54			200	75		
55			75	200	400	
56			75	400		
57			200	75	1500	549
58			50	75		
59			75	200	750	1914
60			200	200		
61			75	200	1500	705
62			75	200		
63			75	75	1500	590
64			75	75		
65			50	50	750	88
66			50	50		
67			50	75	750	419
68			75	500		
69			50	30	200	450
70			50	500		
71			100	50	1200	400
72						
73						
74						
75						
76						
77						
78						
79						
80						
81						
82						
83						
84						
85						
Time						
Start			M Oct	M Sep	L Sep	
Peak			M Nov	M Oct	Oct 5-10	
End			M Dec	M Nov	L Oct	

REMARKS

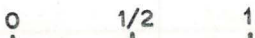
Timing of entry, Pink - First fish Sep 19 (approx.)
 - Last fish Oct 20 (approx.)

1 FISHERIES SERVICE escapements.

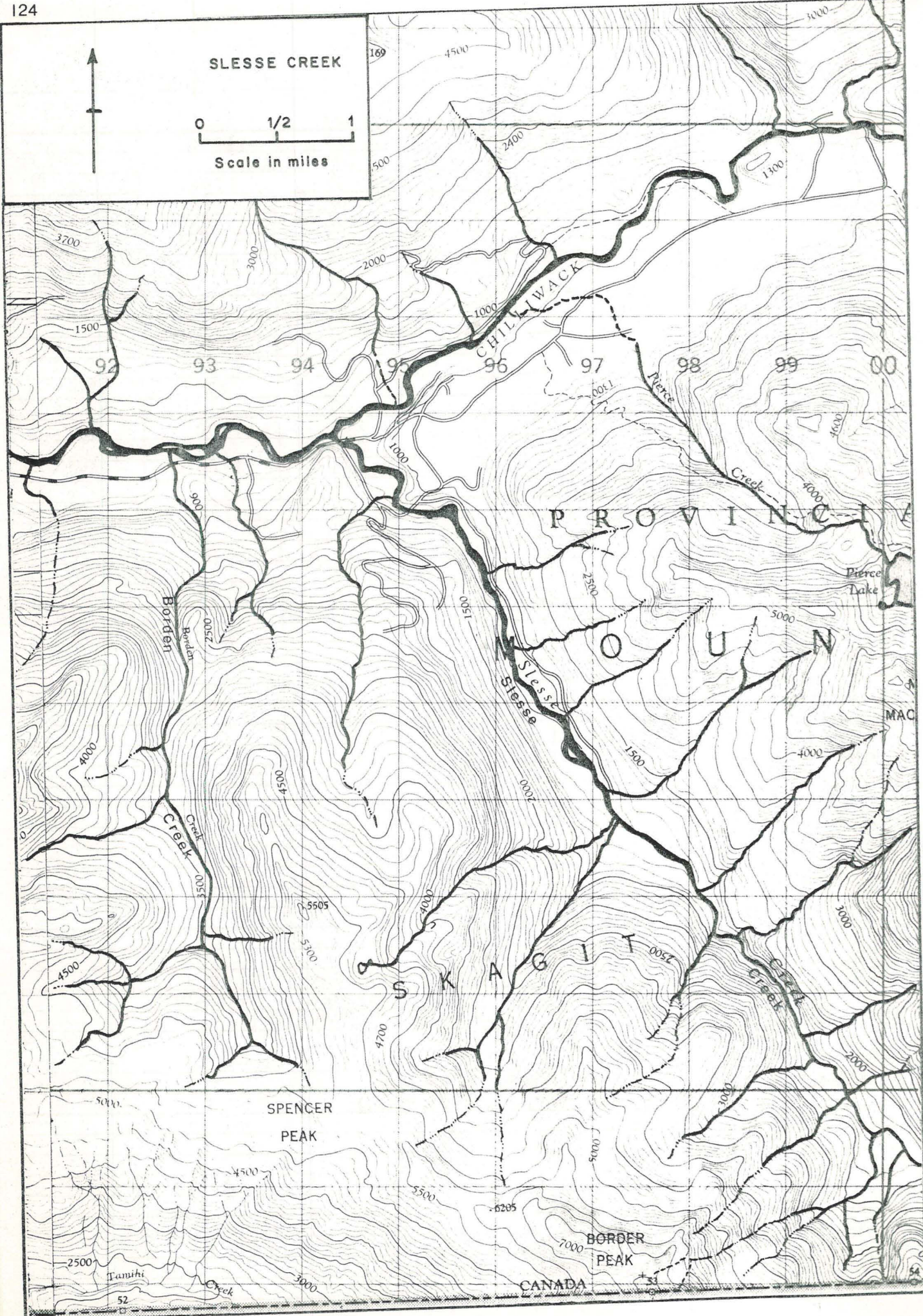
2 I.P.S.F.C. escapements.



SLESSE CREEK



Scale in miles



PROVINCE

OUNTAIN

SKAGIT

SPENCER PEAK

BORDER PEAK

CANADA

Tanithi Creek

52

54

Pierce Lake

MAC

169

4500

500

2400

1300

3700

3000

2000

1000

1500

93

94

95

96

97

98

99

00

Borden

Creek

Slesse

Creek

Creek

Creek

5505

5105

4700

4000

2000

1500

5000

4000

3000

2000

5000

4500

5500

6205

7000

2500

3000

31

54

NAME OF STREAM SLESSE CREEK Silica Creek
 CONSERVATION DISTRICT 2 STATISTICAL AREA Chilliwack
 LOCATION OF MOUTH Flows N. into Chilliwack R., W. of Slesse Mtn., Yale Dist.
 POSITION 49 121 SW
 LENGTH 7.0 MI. WIDTH 64 FT. DRAINAGE 62.7 SQ. MI.
 COMPOSITION: BEDROCK 5 BOULDER 45 COARSE 30 FINE 20
 SILT & SAND _____ UNCLASSIFIED _____

GRADIENT:

FALL IN FT/000

0.0 - 2.5	
2.5 - 5.0	
5.0 - 7.5	
7.5 - 10.0	
> 10.0	throughout

WETTED AREA 263000 SQ. YD. SPAWNING AREA 132000 SQ. YD.DISCHARGE 346.0 CFS MAX 3860.0 21/10/63 MIN 19.8 05/10/60

TEMPERATURE _____

BARRIERS OR POINTS OF DIFFICULT ASCENT Migration of salmon above 2.0 mi.
becomes difficult due to steep gradient.

SPAWNING DISTRIBUTION:

SPECIES	SECTION OF STREAM USED
SOCKEYE	
CHINOOK	0.0-2.0 mi
COHO	0.0-2.0 mi and scattered in upper reaches
CHUM	0.0-2.0 mi
PINK (ODD YR)	0.0-2.0 mi
PINK (EVEN YR)	
STEELHEAD	2.0-5.0 mi

POTENTIAL OF INACCESSIBLE PORTION OF STREAM Nil.

GENERAL REMARKS:

- Coarse gravel and high water velocities limit salmon production. Some good gravel areas exist in the upper stream but water is swift and freshets have destroyed a significant amount of spawning grounds.
- Water is normally clear but becomes muddy after heavy rain.
- Stream is accessible to man for its entire length by logging road.
- Logging has been carried out on this stream for many years and the main valley bottom has been logged; some second growth has returned which slows runoff to a certain extent. Higher levels are still being logged and runoff from these areas during heavy rains carries silt and mud into the stream.

GENERAL REMARKS: (Cont'd)

- Under a permanent closure to protect steelhead spawners and this precludes sport fishing.



Slesse Creek below
bridge approximately
1.0 mi.

Slesse Creek - upstream
view from bridge
approximately 1.0 mi.



ESCAPEMENT RECORD FOR SLESSE CREEK

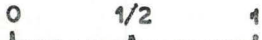
YEAR	SOCKEYE	CHINOOK	COHO	CHUM	PINK ¹	PINK ²
1947						
48			25	200		
49			25	25		
50						
51						
52						
53						
54		25	200			
55			200			
56		25	75			
57		25	750		25	
58		75	200			
59		25	400			317
60		25	750			
61		75	400			55
62		25	200			
63		25	200		75	1578
64			75	25		
65					1500	1524
66			75			
67			75		750	751
68						
69					1000	281
70			50			
71			100		1000	442
72						
73						
74						
75						
76						
77						
78						
79						
80						
81						
82						
83						
84						
85						
Time						
Start		L Jul	E Nov		M Oct	
Peak		M Aug	L Nov		Oct 14-20	
End		L Aug	L Dec		M Nov	

REMARKS Timing of entry, Pinks - Oct 4 (approx.) First fish
- Oct 20 (approx.) Last fish

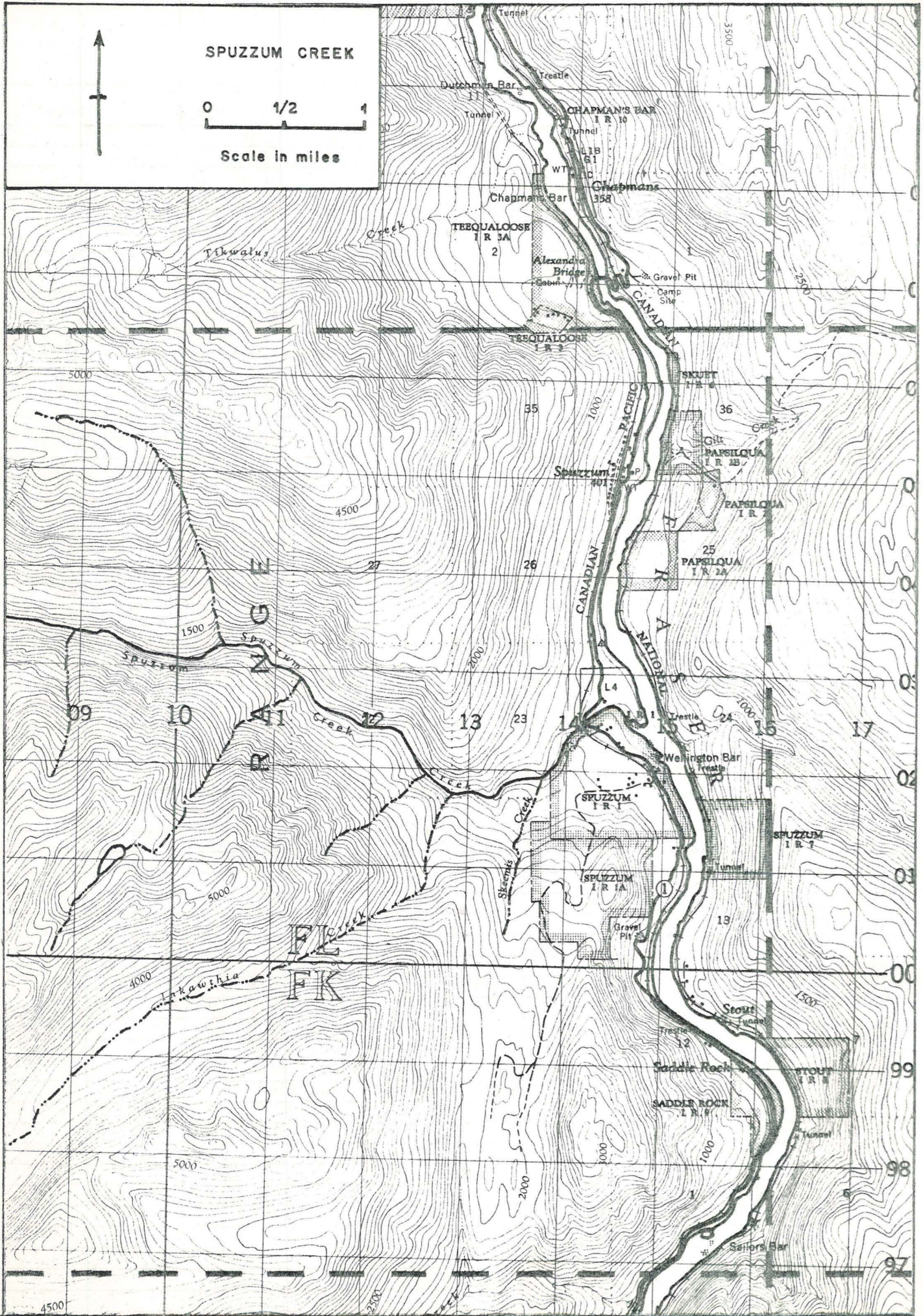
1 FISHERIES SERVICE escapements.
 2 I.P.S.F.C. escapements.



SPUZZUM CREEK



Scale in miles



4500

97

98

99

NAME OF STREAM SPUZZUM CREEK
 CONSERVATION DISTRICT 2 STATISTICAL AREA Chilliwack
 LOCATION OF MOUTH Flows SE and NE into Fraser R. Yale Dist.
 POSITION 49 121 NE
 LENGTH 1.5 MI. WIDTH 65 FT. DRAINAGE 30.0 SQ. MI.
 COMPOSITION: BEDROCK 2 BOULDER 80 COARSE 10 FINE 5
 SILT & SAND 3 UNCLASSIFIED _____

GRADIENT:

FALL IN FT/000

0.0 - 2.5	
2.5 - 5.0	
5.0 - 7.5	
7.5 - 10.0	
> 10.0	throughout

WETTED AREA 57200 SQ. YD. SPAWNING AREA 8500 SQ. YD.DISCHARGE 200 cfs (est.) -/04/71

TEMPERATURE _____

BARRIERS OR POINTS OF DIFFICULT ASCENT Impassable Falls, 12 ft. vertical drop, 1.5 miles from mouth.

SPAWNING DISTRIBUTION:

SPECIES	SECTION OF STREAM USED
SOCKEYE	
CHINOOK	
COHO	0.0-1.5 mi
CHUM	
PINK (ODD YR)	0.0-1.0 mi; mainly mouth to highway 1
PINK (EVEN YR)	
STEELHEAD	0.0-1.5 mi

POTENTIAL OF INACCESSIBLE PORTION OF STREAM Several miles of good spawning gravel above falls.

GENERAL REMARKS:

- Spuzzum Creek has many large boulders in lower 1.5 miles.
- A logging company is operating in this valley and a logging road exists to the head of the main valley.
- Trout are numerous in the upper stream.



Mouth of Spuzzum Creek



Spuzzum Creek above falls

ESCAPEMENT RECORD FOR SPUZZUM CREEK

YEAR	SOCKEYE	CHINOOK	COHO	CHUM	PINK ¹	PINK ²
1947						
48						
49					75	
50						
51						
52						
53					25	
54						
55						
56						
57			25		750	1076
58			50			
59			50		50	2111
60			50			
61			50		350	263
62			50			
63			50		400	364
64			50			
65			50		50	31
66			50			
67			50		150	289
68			100			
69					100	50
70			50			
71					800	55
72						
73						
74						
75						
76						
77						
78						
79						
80						
81						
82						
83						
84						
85						
Time						
Start			L Sep		L Sep	
Peak			M Oct		Oct 5-14	
End			M Nov		L Oct	

REMARKS

Timing of entry, Pink - Sep 24 (approx.) First fish
 - Oct 15 (approx.) Last fish

¹ FISHERIES SERVICE escapements.

² I.P.S.F.C. escapements.

STEWART SLOUGH

For map, refer to
CHILLIWACK-VEDDER RIVER
page 28

NAME OF STREAM STEWART SLOUGH Stewart Creek

CONSERVATION DISTRICT 2 STATISTICAL AREA Chilliwack

LOCATION OF MOUTH S. of Vedder R., E. of Sumas R., New Westminster Dist.

POSITION 49 122 SE.

LENGTH 2.0 MI. WIDTH 5 FT. DRAINAGE 3.0 SQ. MI.

COMPOSITION: BEDROCK _____ BOULDER _____ COARSE _____ FINE _____

SILT & SAND _____ UNCLASSIFIED _____

GRADIENT:

FALL IN FT/000

0.0 - 2.5	throughout
2.5 - 5.0	
5.0 - 7.5	
7.5 - 10.0	
> 10.0	

WETTED AREA 5,900 SQ. YD. SPAWNING AREA 1,200 SQ. YD.

DISCHARGE 4 cfs (est.) -/04/71

TEMPERATURE _____

BARRIERS OR POINTS OF DIFFICULT ASCENT _____

SPAWNING DISTRIBUTION:

SPECIES	SECTION OF STREAM USED
SOCKEYE	
CHINOOK	
COHO	
CHUM	
PINK (ODD YR)	
PINK (EVEN YR)	
STEELHEAD	

POTENTIAL OF INACCESSIBLE PORTION OF STREAM _____

GENERAL REMARKS:

- Salmon no longer frequent this stream. Spraying of brush alongside this creek for several years may have had some effect on fish populations.

281

1870

1871

1872

1873

1874

1875

1876

1877

1878

1879

1880

1881

1882

1883

1884

1885

1886

1887

1888

1889

1890

1891

1892

1893

1894

1895

1896

1897

1898

1899

1900

1901

1902

1903

1904

1905

1906

1907

1908

1909

1910

1911

1912

1913

1914

STREET CREEK

For map, refer to
CHILLIWACK-VEDDER RIVER
page 28



Street Creek - downstream
from 0.25 mi

NAME OF STREAM STREET CREEK

CONSERVATION DISTRICT 2 STATISTICAL AREA Chilliwack

LOCATION OF MOUTH Flows W. into Vedder R., New Westminster Dist.

POSITION 49 122 SE.

LENGTH 0.75 MI. WIDTH 18 FT. DRAINAGE 2.0 SQ. MI.

COMPOSITION: BEDROCK _____ BOULDER _____ COARSE _____ FINE 25

SILT & SAND 75 UNCLASSIFIED _____

GRADIENT:

FALL IN FT/000	
0.0 - 2.5	throughout
2.5 - 5.0	
5.0 - 7.5	
7.5 - 10.0	
> 10.0	

WETTED AREA 7900 SQ. YD. SPAWNING AREA 2000 SQ. YD.

DISCHARGE 15 cfs (est.) -/04/71

TEMPERATURE _____

BARRIERS OR POINTS OF DIFFICULT ASCENT. A culvert at Brown Rd. (0.75 mi) is impassable.

SPAWNING DISTRIBUTION:

SPECIES	SECTION OF STREAM USED
SOCKEYE	
CHINOOK	
COHO	0.5-0.75 mi
CHUM	0.5-0.75 mi
PINK (ODD YR)	
PINK (EVEN YR)	
STEELHEAD	

POTENTIAL OF INACCESSIBLE PORTION OF STREAM Slight.

GENERAL REMARKS:

- Most of stream is heavily silted and weed choked.
- Flows through farmland.
- Spring fed.

1952
1953
1954
1955
1956
1957
1958
1959
1960
1961
1962
1963
1964
1965
1966
1967
1968
1969
1970
1971
1972
1973
1974
1975
1976
1977
1978
1979
1980
1981
1982
1983
1984
1985
1986
1987
1988
1989
1990
1991
1992
1993
1994
1995
1996
1997
1998
1999
2000
2001
2002
2003
2004
2005
2006
2007
2008
2009
2010
2011
2012
2013
2014
2015
2016
2017
2018
2019
2020
2021
2022
2023
2024
2025

1952

1952

NAME OF STREAM SUMAS RIVER
 CONSERVATION DISTRICT 2 STATISTICAL AREA Chilliwack
 LOCATION OF MOUTH Flows NE. into Vedder Canal, New Westminster Dist.
 POSITION 49 122 SE.
 LENGTH 15.0 MI. WIDTH 100 FT. DRAINAGE 57.6 SQ. MI.
 COMPOSITION: BEDROCK _____ BOULDER _____ COARSE _____ FINE 5
 SILT & SAND 80 UNCLASSIFIED 15; Deep Pools (0.0-1.0 mi)

GRADIENT:
 FALL IN FT/000

0.0 - 2.5	throughout
2.5 - 5.0	
5.0 - 7.5	
7.5 - 10.0	
> 10.0	

WETTED AREA 880000 SQ. YD. SPAWNING AREA 44000 SQ. YD.
 DISCHARGE _____ CFS MAX 27.06 ft. 22/06/67 MIN 1.00 ft. 30/11/52

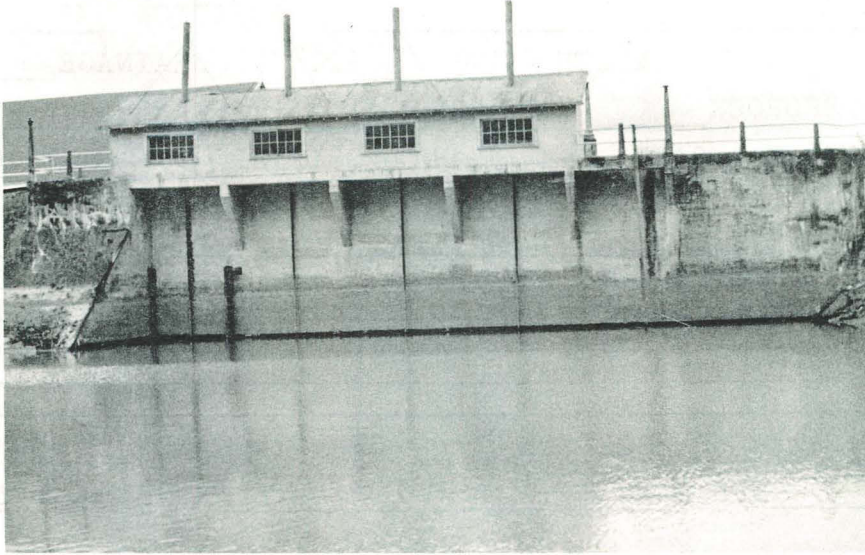
TEMPERATURE _____
 BARRIERS OR POINTS OF DIFFICULT ASCENT Passable concrete dam and pump house
 2.0 miles from mouth.

SPAWNING DISTRIBUTION:

SPECIES	SECTION OF STREAM USED
SOCKEYE	
CHINOOK	
COHO	headwaters (Sumas R. and Sarr Ck.)
CHUM	
PINK (ODD YR)	
PINK (EVEN YR)	
STEELHEAD	

POTENTIAL OF INACCESSIBLE PORTION OF STREAM _____

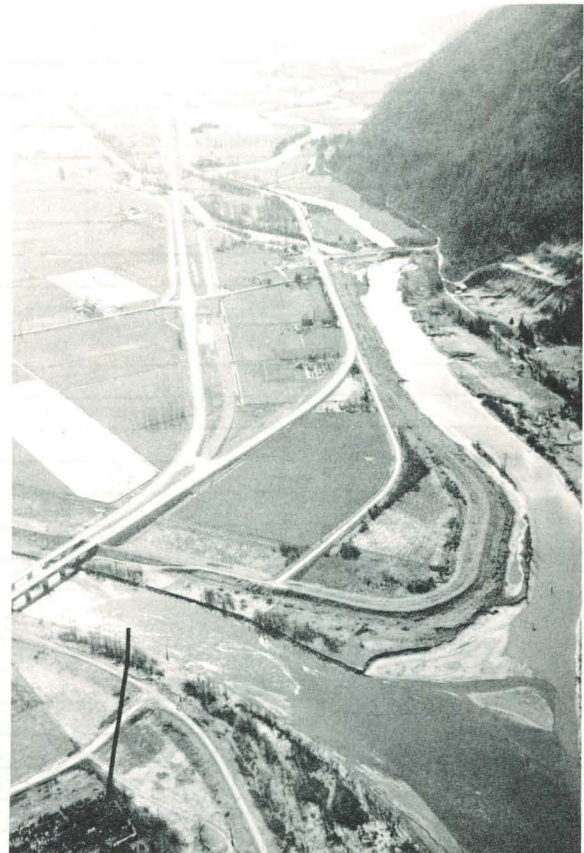
GENERAL REMARKS: Some spawning on U. S. side of border and headwaters of Saar Ck.
 - Trout and sturgeon are caught by anglers.
 - Accessible Tributaries:
 Lonzo Creek: (Marshall) - seperate report submitted.
 Saar Creek: - drains into Sumas R. at 6.0 mi.
 - heavily silted; filled with vegetation.
 - water color is muddy brown throughout the year.
 - Coho only salmon utilizing stream now.



Sumas River looking downstream toward pump house.



Sumas River looking upstream toward pump house.

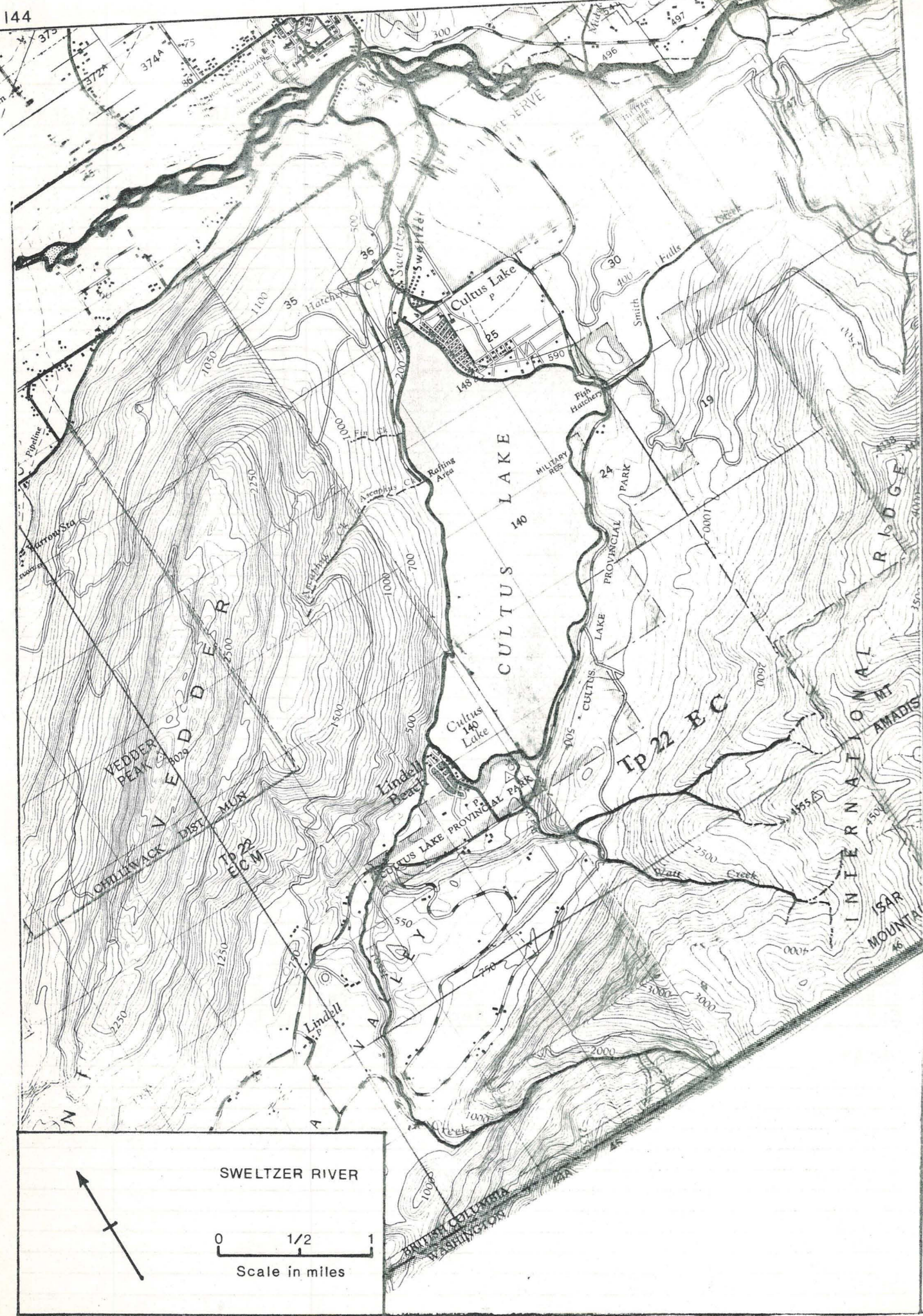


Sumas River
Vedder Canal

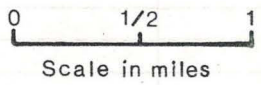
ESCAPEMENT RECORD FOR SUMAS RIVER

YEAR	SOCKEYE	CHINOOK	COHO	CHUM	PINK	STEELHEAD
1947			200	400		25
48			200	400		25
49			75	25	25	25
50			200	75		
51			200	75	25	
52			75	25		
53			75	25	25	
54			200	25		
55			75	25	25	
56			75	25		
57			200	75	25	
58			75	25		
59			200	75	75	25
60			200	25		25
61			200	25	75	25
62			400	75		25
63			75	75	75	25
64			200	75		25
65			200	25	75	25
66			75			
67			25			
68			200			
69			25			
70			25			
71						
72						
73						
74						
75						
76						
77						
78						
79						
80						
81						
82						
83						
84						
85						
Time						
Start			E Nov	L Oct	L Sep	
Peak			L Nov	M Dec	M Oct	
End			L Dec	E Jan	L Oct	

REMARKS



SWELTZER RIVER



NAME OF STREAM SWELTZER RIVER and CULTUS LAKE
 CONSERVATION DISTRICT 2 STATISTICAL AREA Chilliwack
 LOCATION OF MOUTH Flows NE. from Cultus Lk to Chilliwack R., New
Westminster Dist. POSITION 49 121 SW
 LENGTH 1.5 MI. WIDTH 52 FT. DRAINAGE 30.0 SQ. MI.
 COMPOSITION: BEDROCK _____ BOULDER _____ COARSE 15 FINE 60
 SILT & SAND 25 UNCLASSIFIED _____

GRADIENT:

FALL IN FT/000	
0.0 - 2.5	
2.5 - 5.0	0.0-1.5 mi. (mouth to lake)
5.0 - 7.5	
7.5 - 10.0	
> 10.0	

WETTED AREA 45800 SQ. YD. SPAWNING AREA 34300 SQ. YD.
 DISCHARGE 124 cfs (est.) -/04/71
 TEMPERATURE 42° F. 10/03/65
 BARRIERS OR POINTS OF DIFFICULT ASCENT _____

SPAWNING DISTRIBUTION:

SPECIES	SECTION OF STREAM USED
SOCKEYE	(Cultus Lake) see following page
CHINOOK	
COHO	0.0-1.5 mi.
CHUM	0.0-1.5 mi.
PINK (ODD YR)	0.0-1.5 mi.
PINK (EVEN YR)	
STEELHEAD	0.0-1.5 mi.

POTENTIAL OF INACCESSIBLE PORTION OF STREAM _____

GENERAL REMARKS:

- I.P.S.F.C. operates a counting fence at entrance to Cultus Lake.
- Vedder R. floods of 1948-49 washed away extensive spawning area at confluence with Chilliwack R.
- Coho fry utilize entire system for rearing.
- Water; clear.
- Residential and farmland exists around Cultus Lk. at Lindell Beach.
- Sweltzer R. is closed to sports fishing.

GENERAL REMARKS: (Cont'd)

Cultus Lake and its fish populations have been studied by the Fisheries Research Board of Canada and the International Pacific Salmon Fisheries Commission. Many studies are referenced in: Foerester, R.E. The Sockeye Salmon. Bull. Fish. Res. Bd. Canada. 162: 422 pp.

The sockeye salmon in Cultus Lake spawns principally at the south end, in an area referred to as Lindell Beach. Chum and coho salmon utilize the lake outlet area and tributary streams to a very limited degree. The streams are: Frost Creek (rocky shale bottom and steep gradient subject to erosion), Spring Creek (increasing sediment load), and Watt Creek.



Sweltzer River

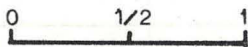
Cultus Lake



Sweltzer River - upstream from logging road. 100 yds. from mouth.



WAHLEACH CREEK



Scale in miles

ESCAPEMENT RECORD FOR SWELTZER RIVER and CULTUS LAKE

YEAR	SOCKEYE ¹	SOCKEYE ²	COHO	CHUM	PINK ¹	PINK ²
1947		8898				
48	12200	13086	200	7500		
49	9033	9301	310	4950	17000	
50	35000	30595	400	35000		
51	15000	13143	400	35000	75000	
52	18250	18910	400	15000		
53	12000	13000	750	3500	35000	
54	35000	23756	400	15000	25	
55	25500	26000	96	4133	6400	
56	15000	14133	200	750		
57	19500	20647	75	1500	7500	6874
58	15000	14097	25	1500		
59	47000	48461	400	200	3500	751
60	17500	17689	75	1500		
61	16428	15428	25	1500	7500	6224
62	27000	27070	200	3500		
63	15000	20571	75	3500	7500	15125
64	11750	11143	75	2600		
65	3500	2532	75	1500	7500	8908
66	16712	17464	75	3500		
67	33000	33492	188	7500	19500	19586
68	25580	25736	160	8000		
69	6700	6739	150	3500	6300	18923
70	15000	15149	200	6500		
71	9000	9145	200	4000	13000	13122
72						
73						
74						
75						
76						
77						
78						
79						
80						
81						
82						
83						
84						
85						
Time						
Start	L Sep		M Oct	M Oct	L Sep	
Peak	E Nov		M Nov	L Oct	Oct 19-24	
End	L Nov		L Dec	M Nov	M Nov	

REMARKS Timing of entry, Pink - First fish Oct 4 (approx)
Last fish Oct 29 (approx)

- All sockeye spawn in Cultus L.; mainly in area of Lindell Beach.
- Chinook escapements were 25 in 1948, 50 in 1949, 50 in 1950; none have been observed since 1950.

1 FISHERIES SERVICE escapements.
2 I.P.S.F.C. escapements.

NAME OF STREAM WAHLEACH CREEK Jones Creek
 CONSERVATION DISTRICT 2 STATISTICAL AREA Chilliwack
 LOCATION OF MOUTH Flows N. into Fraser R., N. of Wahleach L., Yale Dist.
 POSITION 49 121 SW.
 LENGTH 2300 ft.* WIDTH 10 FT. DRAINAGE 44.0 SQ. MI.
 COMPOSITION: BEDROCK _____ BOULDER 10 COARSE 35 FINE 45
 SILT & SAND 10 UNCLASSIFIED _____

GRADIENT:

FALL IN FT/000

0.0 - 2.5	
2.5 - 5.0	
5.0 - 7.5	
7.5 - 10.0	Surveyed at 16'/2000 (Length of Spawning Channel)
> 10.0	

WETTED AREA 2700 SQ. YD. SPAWNING AREA 2200 SQ. YD.
 DISCHARGE 108.0 CFS MAX 1830.0 25/12/50 MIN 0.0 various times
 TEMPERATURE _____

BARRIERS OR POINTS OF DIFFICULT ASCENT A Fish Diversion Weir was installed in the main stem adjacent to the entrance of the spawning channel.

SPAWNING DISTRIBUTION:

SPECIES	SECTION OF STREAM USED
SOCKEYE	
CHINOOK	
COHO	upper half of channel
CHUM	lower half of channel and lower creek
PINK (ODD YR)	throughout length of spawning channel and lower creek
PINK (EVEN YR)	
STEELHEAD	

POTENTIAL OF INACCESSIBLE PORTION OF STREAM Nil.

GENERAL REMARKS: A spawning channel was constructed in 1953 by the B.C. Electric Co. to specifications laid down by the Department of Fisheries in order to compensate for spawning area lost through a hydroelectric development. The development involved the removal of water via tunnel from a headwater lake to a powerhouse located on the Fraser River.

* length includes spawning channel (2000 ft.).

Reference:

Annual reports of Fish Culture Development and Resource Development
Branch 1964 - 1970 incl.

Hourston, W. R. and D. MacKinnon, 1956. Use of an artificial spawning
channel by salmon. Trans. Amer. Fish. Soc. 86; 220-230.

MacKinnon, D., L. Edgeworth and R. E. McLaren, 1961. An Assessment of
Jones Creek Spawning Channel 1954 - 1961, Can. Fish Cult. 30;
3-14.



Wahleach Creek spawning channel looking
downstream



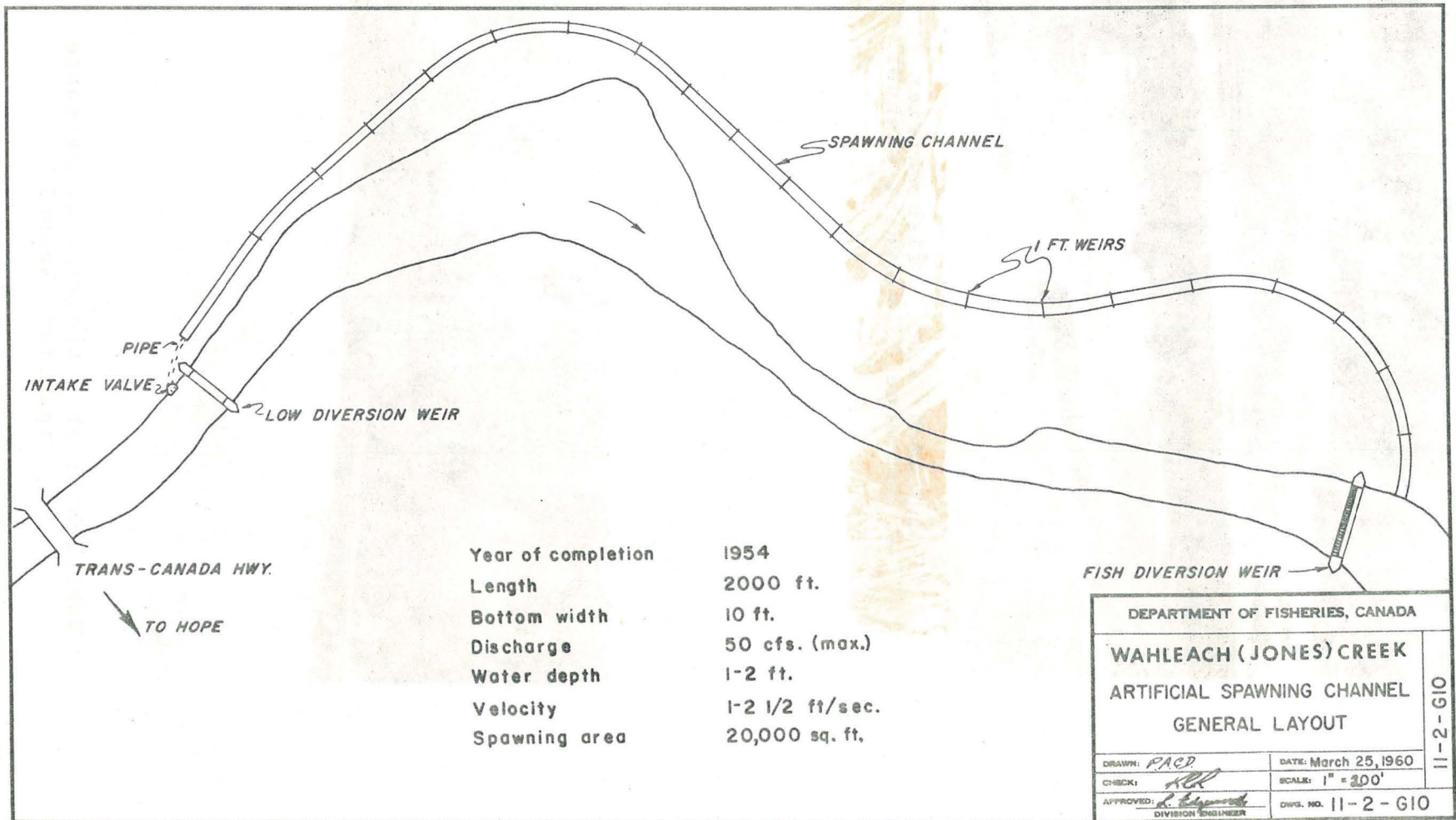
Wahleach Creek spawning channel looking
upstream



Wahleach Creek - downstream to railroad bridge
below fish barrier



Wahleach Creek
Entrance to spawning channel



Year of completion	1954
Length	2000 ft.
Bottom width	10 ft.
Discharge	50 cfs. (max.)
Water depth	1-2 ft.
Velocity	1-2 1/2 ft/sec.
Spawning area	20,000 sq. ft.

DEPARTMENT OF FISHERIES, CANADA	
WAHLEACH (JONES) CREEK	
ARTIFICIAL SPAWNING CHANNEL	
GENERAL LAYOUT	
DRAWN: PACD	DATE: March 25, 1960
CHECKED: <i>[Signature]</i>	SCALE: 1" = 300'
APPROVED: <i>[Signature]</i>	DIVS. NO. 11-2-G10
DIVISION ENGINEER	

11-2-G10



Wahleach Creek - fish diversion weir



Wahleach Creek - upstream to entrance of spawning channel

ESCAPEMENT RECORD FOR WAHLEACH CREEK

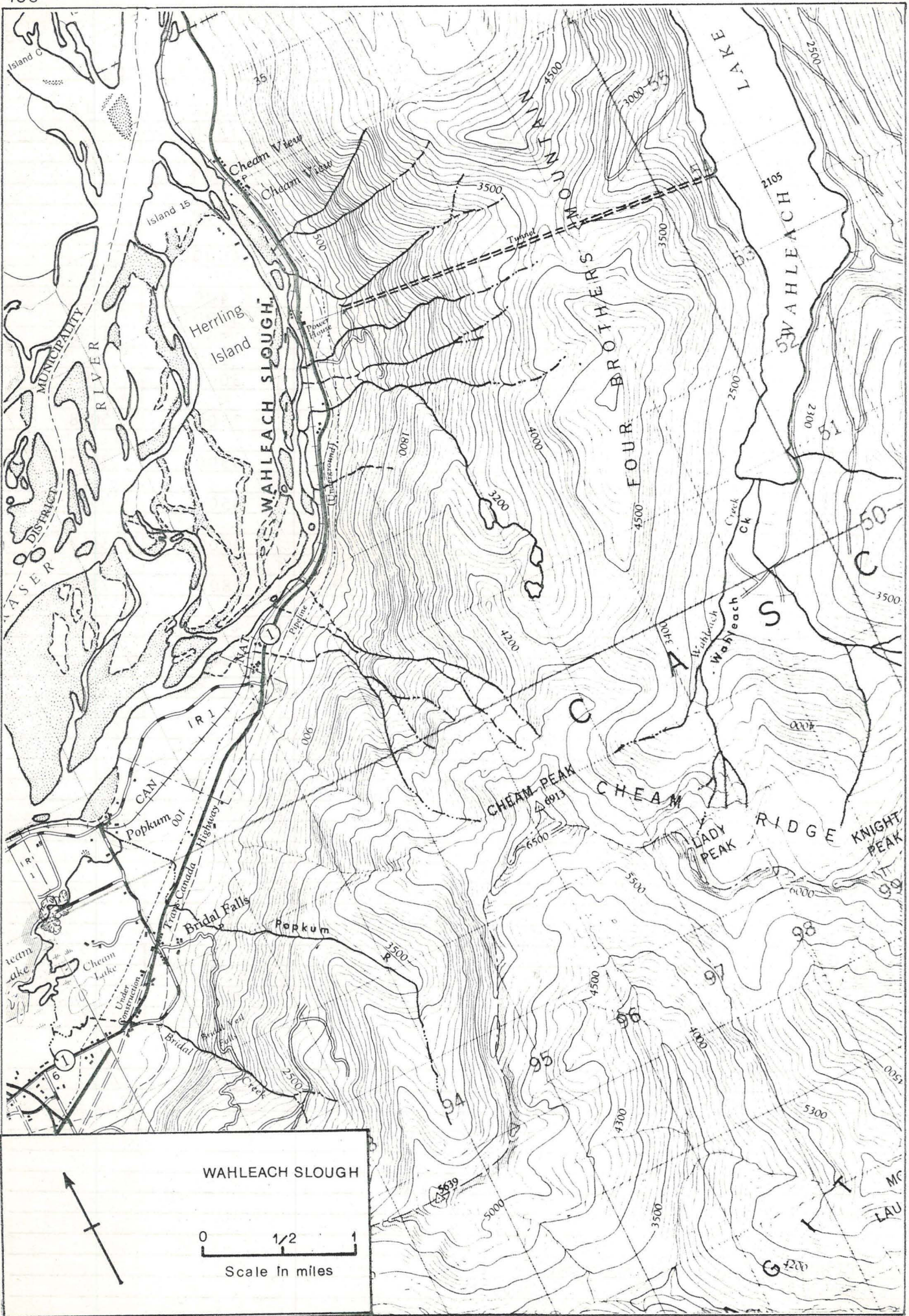
Jones Creek

YEAR	SOCKEYE	CHINOOK	COHO	CHUM	PINK ¹	PINK ²
1947			150	150	7500	
48			150	350		
49			150	150	7500	
50			150	750	25	
51			50	400	7500	
52			75	750		
53				50	4000	
54			50	75		
55			50	150	400	
56			50	150	3000	
57			50	50	1500	1493
58			75	150	150	
59			50	50	3000	2604
60			75	400		
61			75	50	3500	5088
62			75	50		
63			75	50	3500	3500
64			75	75		
65			75	50	3500	3000
66			75	50		
67			50	50	3000	3162
68			30	500		
69			65	180	1800	1779
70			150	200		
71			50	50	2000	2500
72						
73						
74						
75						
76						
77						
78						
79						
80						
81						
82						
83						
84						
85						
Time						
Start			M Oct	M Sep	E Oct	
Peak			M Nov	L Sep	Oct. 1-5	
End			L Dec	L Oct	L Oct	

REMARKS

1 FISHERIES SERVICE escapements.

2 I.P.S.F.C. escapements.



NAME OF STREAM Wahleach Slough
 CONSERVATION DISTRICT 2 STATISTICAL AREA Chilliwack
 LOCATION OF MOUTH Side channel of Fraser R., 2.0 miles E. of Agassiz -
Rosedale Bridge POSITION 49 121 SW
 LENGTH 5.0 MI. WIDTH 100 FT. DRAINAGE 10.0 SQ. MI.
 COMPOSITION: BEDROCK _____ BOULDER 5 COARSE 35 FINE 40
 SILT & SAND 20 UNCLASSIFIED _____

GRADIENT:

FALL IN FT/000

0.0 - 2.5	throughout
2.5 - 5.0	
5.0 - 7.5	
7.5 - 10.0	
> 10.0	

WETTED AREA 293000 SQ. YD. SPAWNING AREA 220000 SQ. YD.DISCHARGE 200 cfs (est) -/04/71

TEMPERATURE _____

BARRIERS OR POINTS OF DIFFICULT ASCENT A shallow bar 250 yds. above
powerhouse makes migration difficult during low water levels.

SPAWNING DISTRIBUTION:

SPECIES	SECTION OF STREAM USED
SOCKEYE	
CHINOOK	
COHO	0.0 - 5.0 mi
CHUM	0.0 - 5.0 mi
PINK (ODD YR)	0.5 - 5.0 mi
PINK (EVEN YR)	
STEELHEAD	0.0 - 5.0 mi

POTENTIAL OF INACCESSIBLE PORTION OF STREAM _____

GENERAL REMARKS:

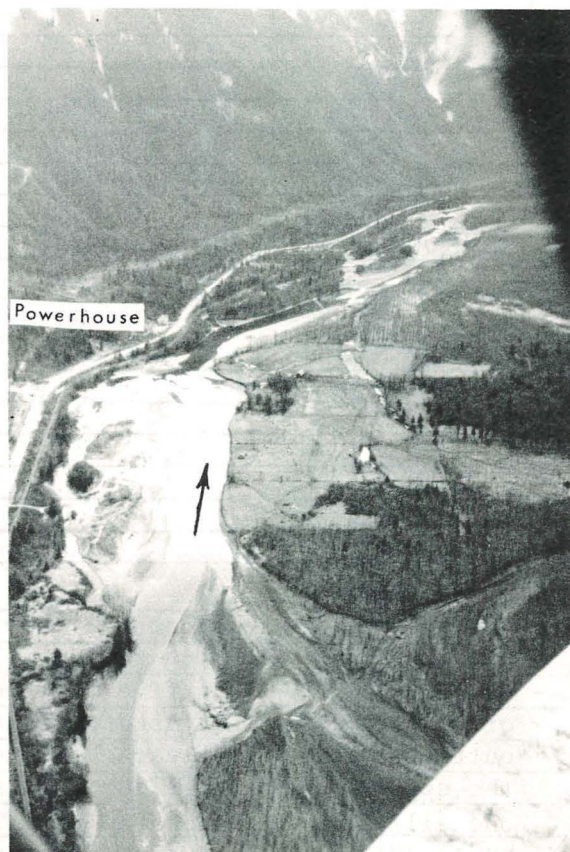
- An accurate count cannot be made due to color of water.
- Water level fluctuates about 1.0 ft. a day due to powerhouse outflow.
- Wahleach Slough is a five mile long, low gradient side channel on the south side of the Fraser R. It is dependent upon the stage of the Fraser R. as well as the outflow from the Wahleach Powerhouse. The latter is approximately 3/4 mile from the upper end of the Slough. A smaller channel of Wahleach Slough, approximately one mile long, is known as the "Tailrace Section" and originates at the powerhouse outflow. The water discharge from the powerhouse originates in Wahleach Lake. Several small creeks enter the "Tailrace Section" during periods of high runoff and deposit significant amounts of fine material in this channel thus diminishing its value as a salmon producer. Gravel deposits are numerous

GENERAL REMARKS: (Cont'd)

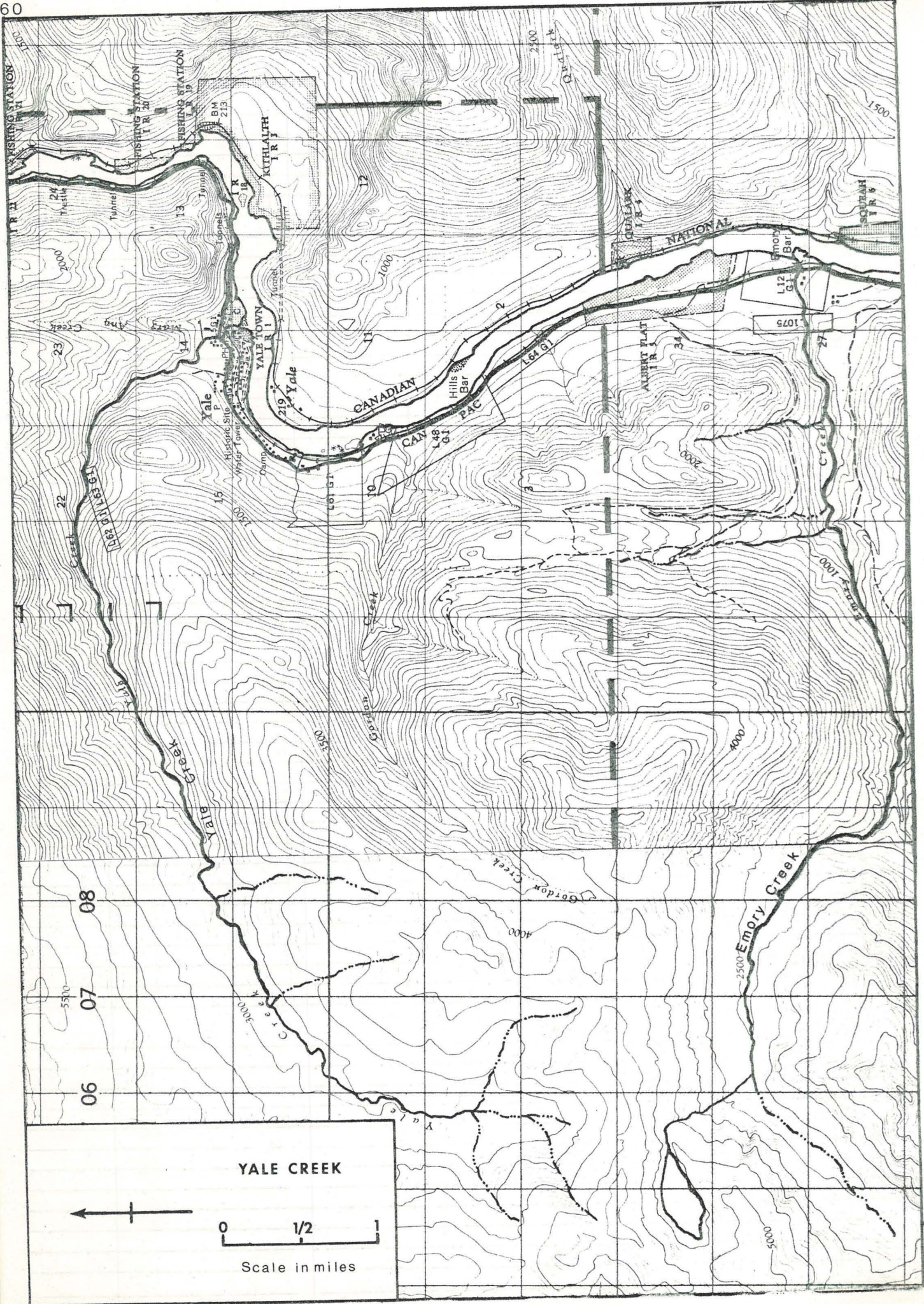
throughout Wahleach Slough including the "Tailrace Section". A considerable amount of gravel has been removed from bars near the upper end of the slough for road construction.



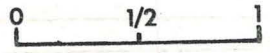
Lower Wahleach Slough



Upper Wahleach Slough



YALE CREEK



Scale in miles

NAME OF STREAM YALE CREEK

CONSERVATION DISTRICT 2 STATISTICAL AREA Chilliwack

LOCATION OF MOUTH Flows E. and SE. into Fraser R., N. of Emory Cr., Yale Dist.

POSITION 49 121 NE.

LENGTH 0.5 MI. WIDTH 15 FT. DRAINAGE 15.0 SQ. MI.

COMPOSITION: BEDROCK 20 BOULDER 60 COARSE 10 FINE 10

SILT & SAND _____ UNCLASSIFIED _____

GRADIENT:

FALL IN FT/000

0.0 - 2.5	
2.5 - 5.0	
5.0 - 7.5	
7.5 - 10.0	
> 10.0	

WETTED AREA 4400 SQ. YD. SPAWNING AREA 900 SQ. YD.

DISCHARGE 40 cfs (est.) -/12/71

TEMPERATURE _____

BARRIERS OR POINTS OF DIFFICULT ASCENT _____

SPAWNING DISTRIBUTION:

SPECIES	SECTION OF STREAM USED
SOCKEYE	
CHINOOK	
COHO	
CHUM	
PINK (ODD YR)	0.0 - 0.5 mi
PINK (EVEN YR)	
STEELHEAD	

POTENTIAL OF INACCESSIBLE PORTION OF STREAM _____

GENERAL REMARKS: _____

- Stream is sport fished at the mouth for "jack" chinook.

THE UNIVERSITY OF CHICAGO
LIBRARY

THE UNIVERSITY OF CHICAGO

ESCAPEMENT RECORD FOR YALE CREEK

YEAR	SOCKEYE	CHINOOK	COHO	CHUM	PINK ¹	PINK ²
1947						
48						
49						
50						
51						
52						
53						
54						
55						
56						
57						
58			50			
59			50		200	510
60			50			
61			50			31
62			50			
63			50		50	31
64			50			
65			50		50	
66						
67						26
68						
69						
70						
71					250	109
72						
73						
74						
75						
76						
77						
78						
79						
80						
81						
82						
83						
84						
85						
Time						
Start					E Oct	
Peak					M Oct	
End					L Oct	

REMARKS _____

1 FISHERIES SERVICE escapements.

2 I.P.S.F.C. escapements.

METRIC EQUIVALENTS

<u>Length</u>		<u>Area</u>	
Cm.	= 0.3937 In.	Sq. Cm.	= 0.1550 Sq. In.
Meter	= 3.28 Ft.	Sq. M.	= 10.76 Sq. Ft.
Meter	= 1.094 Yd.	Sq. M.	= 1.196 Sq. Yd.
Kilom.	= 0.621 Mile	Sq. Kilom.	= .386 Sq. Mi.
In.	= 2.54 Cm.	Sq. In.	= 6.45 Sq. Cm.
Ft.	= 0.3048 Meter	Sq. Ft.	= .0929 Sq. M.
Yd.	= 0.9144 Meter	Sq. Yd.	= .836 Sq. M.
Mile	= 1.61 Kilom.	Sq. Mi.	= 2.59 Sq. Kilom.
		Acre	= 0.405 Hectare
		Hectare	= 2.47 Acres
		Acre	= 43560 Sq. Ft.

<u>Volume</u>		<u>Capacity</u>	
Cu. Cm.	= .061 Cu. In.	Liter	= .0353 Cu. Ft.
Cu. M.	= 35.315 Cu. Ft.	Liter	= .21998 Gal. (Br.)
Cu. M.	= 1.308 Cu. Yd.	Liter	= 61.023 Cu. In.
Cu. In.	= 16.38 Cu. Cm.	Cu. In.	= .0164 Liter
Cu. Ft.	= .028 Cu. M.	Cu. Ft.	= 28.32 Liter
Cu. Yd.	= .7645 Cu. M.	Gal.	= 4.5459 Liter (Br.)

Degrees Centigrade = $\frac{5}{9}$ (Degrees Fahr. - 32)
 Degrees Fahrenheit = $\frac{9}{5}$ (Degrees Cent.) + 32.

ACKNOWLEDGEMENTS

Personnel of the International Pacific Salmon Fisheries Commission provided information on spawning populations and spawning areas for sockeye and pink salmon.

Mr. D.B. Teskey, patrolman, carried out field surveys to obtain pertinent measurements and supplied personal knowledge on stream characteristics and fish activities.

Engineering personnel of the Fisheries Service, particularly G.O. Nielson, provided data collected in previous surveys.

©
INFORMATION CANADA
OTTAWA, 1972
Plant No. 72