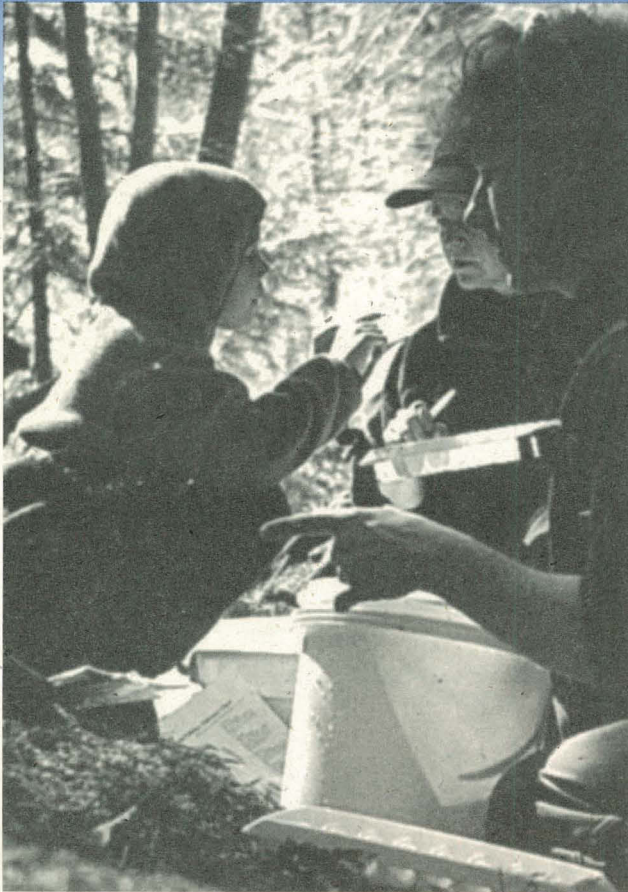




## Habitat and Enhancement Branch

# Community Involvement Directory 2001-2002



A guide to Community  
Economic  
Development, Public  
Involvement,  
Streamkeepers and  
Education Projects and  
Resources in B.C. and  
Yukon

SH  
349  
A4  
2001-01



## About Community Involvement



Welcome to the 13th edition of the Community Involvement Directory. It has now become a two-year publication. It's my pleasure to introduce you to the people in communities who are making great efforts to care for our common property fisheries resource. All the people, volunteers, restoration and enhancement staff, education coordinators, stewards, and community advisors (CAs) you'll meet in this Directory are committed to working together and with other interests to make a difference in our watersheds. These "field people" have the support of a variety of profes-

sional, technical, administrative and management employees whose names you won't find in these pages but whose contribution is recognized and valued.

Nothing remains the same; changes since the printing of the last edition include:

- ❑ Fisheries and Oceans Canada (DFO) is moving to an area management model which has significant organizational implications for many staff.
- ❑ The Habitat Conservation and Stewardship Program (HCSP) now has over 100 stewards throughout the region (BC and Yukon) supporting community conservation and stewardship efforts (listed in Directory and on Web site at [www.hcsp.org](http://www.hcsp.org)).
- ❑ Another element of Resource Rebuilding, the Pacific Salmon Endowment Fund, has been established and we welcome the long-term benefits the fund will generate.
- ❑ In the North Vancouver Island/Mainland Inlet area, CA George Bates is taking up a series of new projects. His responsibilities are being deftly handled, initially by Ray Volk and currently by Aleria Ladwig. Thanks Ray and welcome Aleria!
- ❑ In the West Vancouver/Howe Sound area, CA Sam Gidora left Community Involvement for greener pastures with the Resource Restoration unit. Rob Bell-Irving is the new CA and has already settled nicely into his new role. Roll on Rob!
- ❑ In the Burrard Inlet/Vancouver area, CA Sandie Hollick-Kenyon has been hired permanently into the position. Congratulations Sandie!
- ❑ We have embarked on a major revision of the best-selling *Salmonids in the Classroom* curriculum.

The challenge to protect, enhance and restore our precious fisheries resource remains a difficult one. Fisheries and Oceans Canada is working to adapt to new challenges so it can continue to meet its mandate in the new millennium. The ever-growing community involvement force is a paramount player to success in the complex world of fisheries conservation. We all need to continue to work closely together if we hope to maintain momentum.

— Mark Johnson  
Acting Manager, Community Programs

LIBRARY  
PACIFIC BIOLOGICAL STATION  
FISHERIES & OCEANS CANADA  
NANAIMO, BRITISH COLUMBIA  
CANADA V9R 5K6

## About this Directory

Each community advisor (CA) employed by the Habitat and Enhancement Branch (HEB) of Fisheries and Oceans Canada (DFO) works in a specific area of the Pacific Region (B.C. and Yukon). CAs are the liaisons between DFO and the community-based projects. They also offer valuable support to HEB's education activities. This directory is organized by CA area.

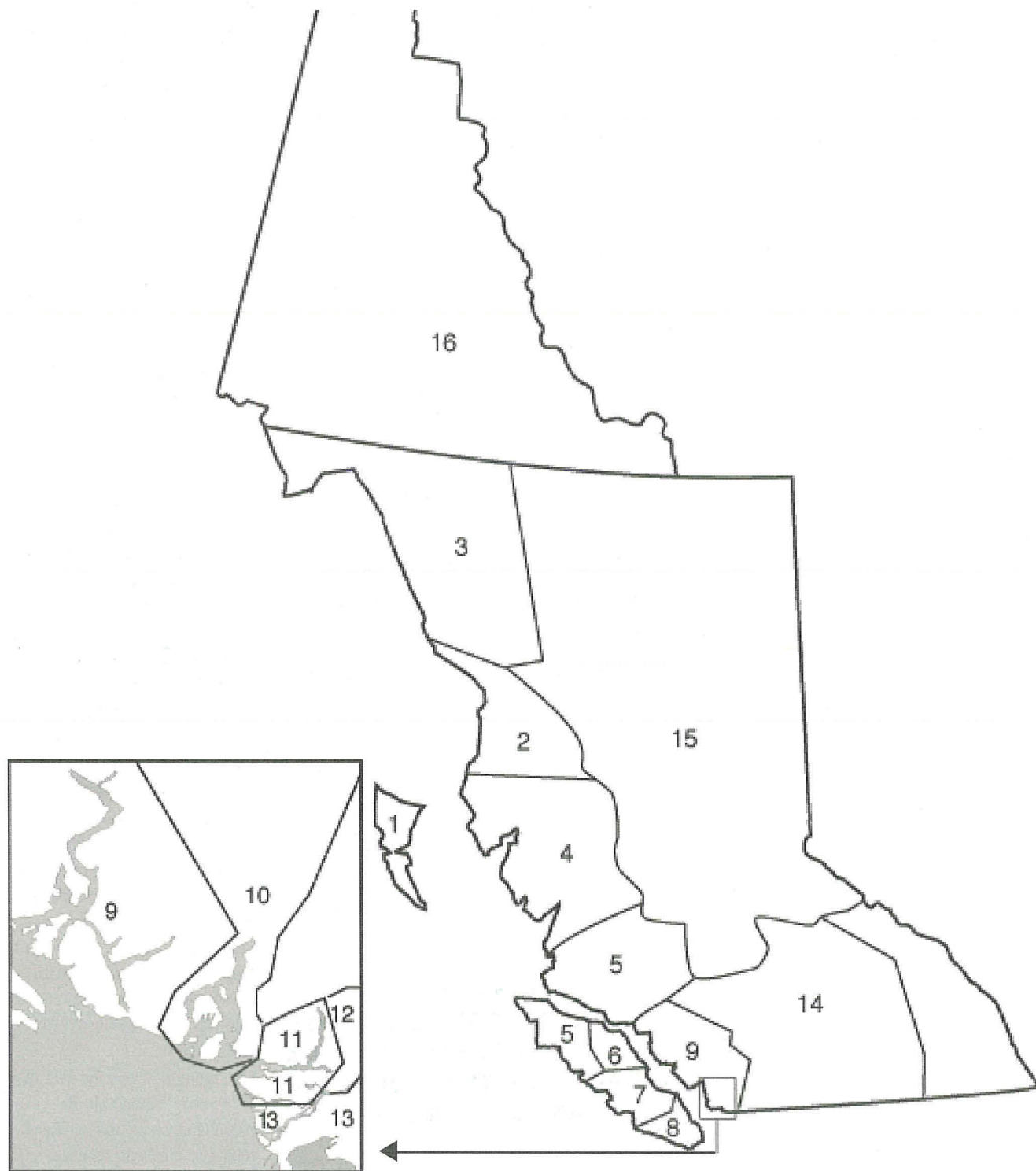
To find information about projects in a specific area, locate it on the map (page 2). The number on the map will identify the CA in the list on page 3. Following the CA's name is the page number for projects in that area. There are four types of projects:

- ❑ **Community Economic Development Program (CEDP)** projects, operated under contract by Aboriginal people or community groups. There are approximately 20 CEDP projects.
- ❑ **Public Involvement Program (PIP)** projects, operated by volunteers or by community organizations. Approximately 10,000 volunteers operate about 300 community projects.
- ❑ **Streamkeepers** projects focus on protection, preservation and rehabilitation of streams, rivers, wetlands and entire watersheds.
- ❑ **Education** projects operate classroom incubators and may be involved in more elaborate studies.

With the move to a two-year publication schedule, the Directory no longer presents egg-take or fry release figures or lists of individual schools. The rising interest in conservation, resource management and stewardship is reflected in a considerable increase in the number of listings for groups engaged in these activities.

Each listing represents the dedication of "ordinary" citizens who do extraordinary work to preserve and enhance our fisheries resource.

# HEB Community Advisors in B.C. and Yukon



# HEB Community Advisors, Education Coordinators and Contacts

## Community Advisors

1. Dave Davies 4  
Box 208  
Queen Charlotte City, B.C.  
V0T 1S0  
Tel: 250/559-0039  
Fax: 250/559-4678
2. Barry Peters 6  
5235 Keith Ave.  
Terrace, B.C. V8G 1L2  
Tel: 250/615-5353  
Fax: 250/615-5364
3. Brenda Donas 8  
Box 578  
Smithers, B.C. V0J 2N0  
Tel: 250/847-5298  
Fax: 250/847-4723
4. Sandie MacLaurin 10  
Box 340  
Hagensborg, B.C. V0T 1H0  
Tel: 250/982-2663  
Fax: 250/982-2439
5. Aleria Ladwig 12  
(acting for George Bates)  
Box 10  
Port Hardy, B.C. V0N 2P0  
Tel: 250/949-6181  
Fax: 250/949-6755
6. Bryan Allen 14  
148 Port Augusta Street  
Comox, B.C. V9N 7Z4  
Tel: 250/339-0431  
Fax: 250/339-4612  
Car: 250/338-3325
7. Barry Cordocedo 18  
3225 Stephenson Point Rd.  
Nanaimo, B.C. V9T 1K3  
Tel: 250/756-7263  
Fax: 250/756-7162
8. Tom Rutherford 20  
Fisheries and Oceans Canada  
Box 241  
Duncan, B.C. V9L 3X3  
Tel: 250/746-5137  
Fax: 250/746-8397

9. Grant McBain 24  
Box 10  
Madeira Park, B.C. V0N 2H0  
Tel: 604/883-2613  
Fax: 604/883-2152
10. Rob Bell-Irving 26  
4500 Capilano Park Road  
North Vancouver, B.C.  
V7R 4L3  
Tel: 604/666-6325  
or: 1-800-863-2116  
Fax: 604/666-1949
11. Sandie Hollick-Kenyon 28  
Unit 3 - 100 Annacis Parkway  
New Westminster, B.C.  
V3M 6A2  
Tel: 604/666-0743  
Fax: 604/666-6627  
Car: 604/290-3156
12. Maurice Coulter-Boisvert 32  
Unit 3 - 100 Annacis Parkway  
New Westminster, B.C.  
V3M 6A2  
Tel: 604/666-2870  
Fax: 604/666-6627  
Car: 604/328-7120
13. Joe Kambeitz 35  
Unit 3 - 100 Annacis Parkway  
New Westminster, B.C.  
V3M 6A2  
Tel: 604/666-0742  
Fax: 604/666-6627
14. Dennis Demontier 37  
1278 Dalhousie Drive  
Kamloops, B.C. V2C 6G3  
Tel: 250/851-4954  
Fax: 250/851-4951  
Car: 250/372-6148
15. Roy Argue 39  
3690 Massey Drive  
Prince George, B.C. V2N 2S8  
Tel: 250/561-5533  
Fax: 250/561-5534  
Car: 250/565-9610
16. Al von Finster 42  
100-419 Range Rd.  
Whitehorse, YU Y1A 3V1  
Tel: 867/393-6721  
Fax: 867/393-6738

## Streamkeepers Program

Mark Johnson  
360-555 W. Hastings St.  
Vancouver, B.C. V6B 5G3  
Tel: 604/666-6831  
Fax: 604/666-0417

## Education Coordinators

Lower Mainland  
Bev Bowler  
1132 Maplewood Cres.  
North Vancouver, B.C. V7P 1H9  
Tel: 604/980-7602  
Fax: 604/980-7602  
Cell: 604/219-2673

Southern Vancouver Island  
Don Lowen  
3731 Winston Crescent  
Victoria, B.C. V8X 1S2  
Tel: 250/388-4756  
Fax: 250/388-4759

Central Vancouver Island  
Sarah Casley  
c/o Big Qualicum Hatchery  
215 Fisheries Road  
Qualicum Beach, B.C. V9K 1Z5  
Tel: 250/703-1049  
Fax: 250/757-8741

Yukon Territory  
Trix Tanner  
#100 - 419 Range Road  
Whitehorse, YU Y1A 3V1  
Tel: 867/668-7595  
Fax: 867/393-6738

Education coordinators who assist individual community advisors can be found in "Education" sections of the CA listings throughout this Directory.

## HEB Community Involvement

For further information, contact:  
Joanne Day  
Information Coordinator  
Community Involvement  
Habitat and Enhancement Branch  
Fisheries and Oceans Canada  
360 - 555 West Hastings Street  
Vancouver, B.C. V6B 5G3  
Tel: 604/666-6614  
Fax: 604/666-0417  
E-mail: dayj@pac.dfo-mpo.gc.ca

## Pacific Streamkeepers Federation

Coordinator: Zo Ann Morten  
720 Orwell Street  
North Vancouver, B.C.  
V7J 2G3  
Tel: 1-800/723-7753  
Tel/Fax: 604/986-5059  
E-mail: pskf@direct.ca

E-mail note:  
HEB staff addresses are:  
LastnameF[initial]@pac.dfo-mpo.gc.ca

EG: DaviesD@pac.dfo-mpo.gc.ca

Check out our web page:

[www.pac.dfo-mpo.gc.ca](http://www.pac.dfo-mpo.gc.ca)

# Dave Davies

## Queen Charlotte Islands/Haida Gwaii



The Queen Charlottes have seen declines in both coho stocks and chum stocks in recent years. The major causes include overfishing in the 1960s and 1970s; habitat damage due to logging, which continues to this day, and the changing condition of the ocean. Many local groups are working to try to reverse the declines through enhancement, stream restoration, and protection of salmon streams from further damage. The general trend of activities of community groups here is to move from traditional methods of enhancement that were used in the past to habitat restoration, watershed assessment and protection, and monitoring of salmon stocks.

### Community Projects

#### *Chown Brook Group*

Ian Hetman 250/626-5591

PO Box 954

Masset, B.C. V0T 1M0

The group operates adult and juvenile fences and concentrates on coho incubation and assessments.

First year: 1985

Activity: Counting fence,  
Pen rearing,  
Cassette incubator,  
Bio-reconnaissance

Location: Chown Brook

Persons: 9

Species: Coho

#### *Hecate Strait Streamkeepers Society*

George Farrell 250/559-8715

Box 1046

Queen Charlotte City, B.C. V0T 1S0

This group has received a total of more than \$300,000 from DFO, Pacific Salmon Foundation and Gwaii Trust for stream restoration work around Skidegate Inlet.

First year: 1996

Activity: Streamkeepers activities,  
Bio-reconnaissance,  
Stream restoration

Location: Skidegate Inlet streams

Persons: 15

#### *Husby Forest Products*

Dwayne MacGinnis 604/488-0568

Eden Lake, BC

Husby operates two coho hatcheries; one at Eden Lake logging camp and the other at their sportsfishing establishment, Peregrine Lodge.

First year: 1996

Activity: Satellite coho hatchery

Location: Torney Creek, Naden,  
Davidson rivers

Persons: 9

Species: Coho

#### *J.S. Jones Forest Products Ltd.*

Geoff Payne 250/637-5324

PO Box 470

Sandspit, BC, V0T 1S0

The group makes its releases in the headwaters of Grey Bay Creek and Sheldons Bay Creek and operates a rearing facility at Mike Laurie Creek.

First year: 1994

Activity: Bio-reconnaissance,  
Incubation, rearing

Location: Grey Bay, Sheldons

Lagoon creeks

Persons: 8

Species: Coho

#### *Kumdis River Lodge*

Rick Bourne 604/873-4228

This project rears coho smolts from the Mamin River.

First year: 1998

Activity: Rearing

Location: Mamin River

Persons: 6

Species: Coho

#### *Lawn Hill Enhancement Residents Group*

Glen Davies 250/559-8094

PO Box 21

Queen Charlotte City, B.C. V0T 1S0

The group has scaled down enhancement efforts so it can concentrate on assessment and habitat work on Mollitors and Jungle creeks.

First year: 1992

Activity: Satellite hatchery,  
Counting fences,  
Bio-reconnaissance

Location: Lawn Hill, Mollitors,  
Jungle creeks

Persons: 6

Species: Coho

#### *Living and Learning School*

Eryn Sinclair 250/559-8757

Queen Charlotte City, B.C. V0T 1S0

The classroom incubation project continues, working with eggs from Tarundle Creek.

First year: 1997

Activity: Classroom incubation,  
Bio-assessment

Location: Tarundle Creek

Persons: 17

Species: Coho

#### *North Graham Island*

##### *Streamkeepers*

Chris Marrs 250/557-4574

P.O. Box 126,

Port Clements, B.C. V0T 1R0

This group has received funding for two fisheries guardians to enumerate salmon in Naden Harbour, and conduct adult and juvenile salmon counts in the Datleman and Nadu Creeks. It conducts Streamkeepers activities on streams throughout Northern Graham Island.

First Year: 1998

Activity: Streamkeepers activities,  
Salmon enumeration,  
Public education,  
Stream monitoring

Location: Northern Graham Is.

Persons: 10

#### *Northern Trollers Association*

Neil Davies 250/559-4649

PO Box 21

Queen Charlotte City, B.C. V0T 1S0

The chum eggs for this project come from MacMillan Creek. Coho are obtained in the Honna River and Tarundle Creek.

First year: 1989

Activity: Satellite hatchery,  
Bio-reconnaissance,  
Habitat improvement

Location: Tarundle, MacMillan  
creeks, Honna River

Persons: 6

Species: Chum, coho

#### *Old Masset (CEDP)*

Darren Edgars 250/626-5115

Old Masset Village Council

Box 189,

Masset B.C. V0T 1M0

This CEDP project works with Yakoun River chinook. Hatchery staff would like to work cooperatively with the Haida Fisheries Program to obtain better chinook escapement estimates.

First year: 1978

Activity: Hatchery, assessments

Location: Yakoun River

Persons: 1-6

Species: Chinook, coho

#### *Port Clements Salmon*

##### *Enhancement Club*

Dwight Welwood 250/557-4457

PO Box 303

Port Clements, B.C. V0T 1R0

The group works on the Mamin River and provides Yakoun River chinook to the Port Clements

school feeding and release program.

First year: 1983  
Activity: Mini-hatchery, Assessment, Bio-reconnaissance  
Location: Mamin River  
Persons: 5  
Species: Coho

*Queen Charlotte Islands Salmon Unlimited Society*

Barry Mark 250/626-3758  
Box 683,  
Masset B.C. V0T 1M0  
This group was involved in improving the Coates Creek fishway on the west coast of Graham Island. They have built a new hatchery on Deep Creek near Masset with the aim of restoring the coho run into Deep Creek.  
First year: 1998  
Activity: Mini Hatchery, Assessment, Bio-reconnaissance  
Persons: 10  
Species: Coho

*Skidegate Inlet Sportfishing Association*

Steve Scheer 250/559-0030  
PO Box 847  
Sandspit, BC, V0T 1T0  
This group works on local creeks and operates the Alliford Bay hatchery.  
First year: 1996  
Activity: Satellite hatchery, Fry trapping, Bio-reconnaissance  
Location: Blaine, Baxter, Haans, Sachs creeks  
Persons: 20  
Species: Coho

*Tlell Watershed Society*

Leandre Vigneault 250/557-4453  
PO Box 81,  
Tlell, B.C. V0T 1R0  
Volunteers work with the Local Resource Use Plan for the Tlell River watershed gathering information on biophysical parameters within the watershed and work to protect the watershed

from further damage.

First year: 1986  
Activity: Streamkeepers activities, Bio-reconnaissance, Fry trapping, biophysical assessments, Public education, land use planning  
Location: Tlell River watershed  
Persons: 30

*Western Forest Products (Sewell)*

Jack Collier 250/637-2201  
Sewell Inlet WFP  
Sewell Inlet, B.C. V0T 1V0  
Group works with coho in Tasu Sound and Sewell Inlet.  
First year: 1977  
Activity: Mini-hatchery, Assessment, Bio-reconnaissance  
Location: Sewell Head, Tasu, Flat, George's, Lomgon creeks  
Persons: 6  
Species: Coho

## Education

Half a dozen Queen Charlotte Islands schools operate classroom incubators. The projects involve 15 to 45 persons each. Many include hatchery tours, habitat inventories, and fish dissections. Fry are released to several local creeks.

## Related Fisheries Contacts

### Habitat Conservation and Stewardship Program

Martin Forbes 250/639-2078 forbesm@pac.dfo-mpo.gc.ca  
Kimiko von Boetticher 250/626-3773 hgmgakb@island.net

Kitimat AC  
Masset SC

North Coast and Northern BC  
Haida Gwaii Marine Resources  
Group Association

### Major Enhancement Facilities

*Pallant Creek Hatchery*

Box 225,  
Sandspit, BC V0T 1T0  
Tel: 250/624-8799  
Fax: 250/624-8799

First year: 1978  
Location: Moresby Island  
Species: Chinook, chum, coho, steelhead

*Yakoun River Hatchery*

Old Masset Villlage Council  
Box 189,  
Masset, BC V0T 1M0  
Tel: 250/626-5115

First year: 1978  
Location: Yakoun River  
Species: Chinook, coho



Taking care of our salmon-bearing streams is an important part of community involvement projects. The work is often done with hand tools — they make the job more difficult but minimize the impact on the environment.

# Barry Peters

## Northern interior and north coast region



This region always presents interesting challenges to all involved in our programs: the volunteers, the contractors, the children, and the CA. Distances to cover are immense and temperature variations of both air and water are diverse, to say the least. However, all these groups, as partners in the goal to assist this resource, rise to the challenge and achieve success every spring and fall with dedication and perseverance. I respect their dedication and take heart in the faith they have regarding the resilience of these amazing animals we call salmon. I want to thank them one and all for making the job of community advisor in this region a very rewarding career.

### Community Projects

#### *Bear River Salmonid Enhancement Society*

Cheryl Presley 250/636-9101  
PO Box 443,  
Stewart, B.C. V0T 1W0

A very active group involved in habitat assessment, restoration, public education, *Salmonids in the Classroom*, storm drain marking and adult enumeration.

First year: 1997

Activity: Habitat improvement, Stewardship, Enhancement

Location: Airport, Conex, Clements creeks

Persons: 15

Species: Coho

#### *Dutch Valley Residents*

Terry Ruel 250/638-5329  
PO Box 234  
Terrace, B.C. V8G 1N3

Assist with activities on Spring Creek including egg-takes and releases. Eggs are incubated and reared at Eby Street Hatchery.

First year: 1997

Activity: Stream clean up, Pilot incubation

Location: Spring Creek

Persons: 8

Species: Coho

#### *Gitanyouw/Kitwanga Coho Enhancement*

Harry Daniels 250/849-5246  
Kitwancool, B.C.

A history of introductory enhancement projects. At present we have a

small incubator with coho plus the project looks after the school program. Technical transfer is the goal. Easily accessible by road.

First year: 1985

Activity: Incubation, education

Location: Kitwanga River

Persons: 45 including school kids

Species: Coho

#### *Hartley Bay (CEDP)*

Danny Reece 250/841-2558  
General Delivery

Hartley Bay, B.C. V0V 1A0

Gravity, surface-water fed incubation and rearing produces mostly fed fry with a small (30K) group of smolts. Fed fry are released into inaccessible hanging lakes where they rear and return for use in various fisheries. Smolts are released into Hartley Bay Creek to help guarantee adults for broodstock. No road access, float plane or boat. No roads in the community, only boardwalks.

First year: 1979

Activity: Hatchery, rearing, Stocking Smolt releases

Location: Hartley Bay Creek, Whalen, Red Bluff, Sylvia, Angler Cove and Upper Hartley Bay lakes

Persons: 2 full time, 3 part

Species: Coho

#### *Kincolith Hatchery (CEDP)*

Jim Adams, Barry Smythe  
PO Box 231 250/633-2601  
New Aiyansh, BC V0J 1A0

Small facility at the mouth of the Kincolith River produces chinook,

coho, and chum. Combination of gravity- and pump-fed water supply and gravity-fed earth channels for rearing. Most fish reared to smolt except the chum which are released as fed fry. One of the few tagged chinook populations on the North Coast. Access: float plane or ferry.

First year: 1978

Activity: Hatchery

Location: Kincolith River

Persons: 2

Species: Chinook, chum

#### *Kitsumkalum Band Hatchery (CEDP)*

Russ Bolton 250/635-6177  
P.O. Box 544  
Terrace, B.C. V8G 4B5

Gravity-fed groundwater facility involved with coho. Coho are reared to smolt. Winter access is by snow machine, road access for the balance of the year.

First year: 1983

Activity: Hatchery

Location: Zymacord River

Persons: 1.5

Species: Coho

#### *Lake & Stream Biological Society*

Alois Schillinger 250/638-8610  
210-3404 Kalum Street  
Terrace, B.C. V8G 2N6

Louis is actively researching fertilization techniques for small degraded or sterile stream environments. He is also involved in FsrBC and other initiatives.

First year: 1992

Activity: Salmonid food production

Location: Local small streams, Eby Street Hatchery

Persons: 4

#### *Mount Elizabeth Secondary School*

First year: 1985

Activity: Streamkeepers activities, *Salmonids in the Classroom*

Location: Kitimat area, Pine Creek

Persons: 25 students and teachers

Species: Coho, cutthroat, dolly varden, pinks

#### *Northwest Watershed Enhancement Society*

Brenda Ramsay 250/638-8436  
4822 Sunset Dr.  
Terrace, B.C. V8G 1C6

The society took over operation of Eby Street Hatchery, a groundwater-fed hatchery in the middle of Terrace. All coho from various systems are either reared to fry and released or kept until smolts. Easy access, good educational value, lots of P.R. and good community support.

First year: 1981

Activity: Hatchery, coho outplant, School support

Location: Spring, Skully, Thornhill creeks

Persons: 12

Species: Coho

#### *Oona River Resource Association*

Janet Lemon 250/624-1789  
Box 80

Oona River, B.C. V0V 1E0

A beautiful setting in a quiet small port accessible by boat or plane only. This group is constructing a

new facility to replace their small but quaint hatchery. They are also involved in a number of initiatives including HRSEP and FsRBC.

First year: 1982  
 Activity: Mini-hatchery  
 Location: Oona River  
 Persons: 14  
 Species: Coho, pink

*Prince Rupert Salmonid Enhancement Society (Oldfield Creek Hatchery)*

Jim Hellman 250/624-6733  
 PO Box 1098  
 Prince Rupert, B.C. V8G 4B4  
 Begun by a couple of interested educators who saw the Outdoor School in Squamish, this facility still works primarily with coho but also does a little with chinook and pinks. Education is still its major focus; school visits in the fall and the *Gently Down the Stream* package in the spring. Lots of

tourists throughout the summer. Society is actively involved in FsRBC and HRSEP proposals.

First year: 1983  
 Activity: Streamkeepers' activities, Mini-hatchery, School support  
 Location: Oldfield, Dianna, Hays, Kloiya creeks  
 Persons: 10  
 Species: Chinook, coho, pink

*Terrace Green Belt Society*

Kelly Kline 250/798-2535  
 1677 Lupine St., Lakesle Lake  
 Terrace, B.C.  
 This group actively supports creek clean-ups and River's day each year.  
 First year: 1993  
 Location: Terrace area, Howe Creek  
 Persons: 8

*Terrace Salmonid Enhancement Society (Stock Assessment)*

Chris Culp 250/635-3471  
 P.O. Box 21  
 Terrace, B.C. V8G 4A2  
 Community-based facility dealing with chinook and coho and responsible for the only adult chinook survey which generates an exploitation rate indicator north of Cape Caution. Involved in many other initiatives including, FRBC, FsRBC, Pacific Salmon Foundation, etc. Many tours in the summer.  
 First year: 1980  
 Activity: Hatchery, assessment, Tagging, creel census, Genetic sampling  
 Location: Kalum River  
 Persons: 3  
 Species: Chinook

**Education**

School projects involve 10 to 300 persons engaged in classroom incubation, salmon studies and field trips.

**Kitimat area:** There are seven schools, 10 classes and 300 students involved with classroom incubation.

**Terrace area:** There are 17 schools, 20 classes and 550 students involved with classroom incubation.

**Prince Rupert area:** There are 15 schools, 17 classes and 500 students involved in classroom incubation.

**Related Fisheries Contacts:**

**Habitat Conservation and Stewardship Program**

Debra Stokes	250/632-4638	dstokes@kermode.net	Kitimaat Village	HS	Northwest Stewardship Society
Peter Woods	250/627-3452	woodsp@pac.dfo-mpo.gc.ca	Prince Rupert	HA	Prince Rupert
Robert Diermair	250/635-5449	r_diermair@hotmail.com	Terrace	SC	Northwest Stewardship Society
Robert Heibein	250/615-5362	heibeinr@pac.dfo-mpo.gc.ca	Terrace	HA	Terrace
Cory Martens	250/624-8566	cmartens@citytel.net	Prince Rupert	HS	North Coast Fisheries Renewal Council
Scott Allen	250/624-8566	scallen@citytel.net	Prince Rupert	SC	North Coast Fisheries Renewal Council

**Major Enhancement Facilities**

*Kitimat River Hatchery*

Box 197  
 Kitimat, BC V8G 2G7  
 Tel: 250/639-9888  
 Fax: 250/639-9220

First year: 1983  
 Location: Kitimat  
 Species: Chinook, coho, chum, steelhead, cutthroat

# Brenda Donas

## Smithers and northwestern B.C.



Coho conservation is still in the forefront for Upper Skeena. The Strategic Stock Enhancement Program is in full swing and includes an Upper Bulkley River coho sperm cryopreservation program, juvenile downstream migration programs, an Upper Bulkley River fry release program and a fall emigration study on Buck Creek. The new Upper Bulkley River Assessment Fence, funded by the Strategic Stock Enhancement Program, is working well. Toboggan Creek hatchery is incubating and rearing extra eggs for the Upper Bulkley River coho programs. Habitat Conservation and Stewardship Program staff members are integrating well with local groups and projects. New focus groups and steering committees have been formed to deal with issues such as agriculture, transportation corridors and urban impacts on streams. The education program is extremely popular and teachers are very enthusiastic about the new *Salmonids in the Classroom* program.

The *Salmonids in the Classroom* program has been launched in northwestern B.C. and I am involved with the Glenora chinook incubation project, which is incubating about 40,000 Stikine River chinook eggs and rearing fry to two-grams.

### Community Projects

#### *Bigelow (Dahlie) Creek Project*

Students from the Chandler Park Middle School have conducted water quality and aquatic insect monitoring on the creek over the past three years and released fry from their classroom aquarium into the creek for two. The creek has been moved by the Town of Smithers and is impacted by residential development, industry, and transportation corridors. Although the upper portion of the creek has been severely degraded, coho and chinook fry as well as steelhead juveniles and resident rainbow trout utilize the lower reaches.

First year: 1997

Activity: Streamkeepers activities

Location: Bigelow (Dahlie) Creek

Persons: 70

#### *Buck Creek Project*

Over the years, the lower portion of Buck Creek appears to have shown an increase in the number of coho and steelhead juveniles rearing in the creek. The students at Twain Sullivan School will be conducting water quality and some fry monitoring on Buck Creek. They will also conduct some stream clean-up to ensure that the fish

habitat is protected.

First year: 1998

Activity: Streamkeepers activities

Location: Buck Creek

Persons: 35 (students)

#### *Bulkley Valley Rod and Gun Club*

Terry O'Neill 250/847-4166

Box 2976

Smithers, B.C. V0J 2N0

This project commenced to educate Rod and Gun Club members about our salmon resource and give them "hands-on" participation. It involves short-term rearing of Toboggan Creek coho which are transferred to the club for the final months of spring rearing. The rearing facility consists of a twelve-foot diameter tub. Water is supplied by a gravity-feed line from Club Creek. Coho are released to Club Creek (usually as marked yearlings). As of May 2000, the Rod and Gun Club members were re-evaluating their participation.

First year: 1994

Activity: Coho rearing

Location: Club Creek

Persons: 15

Species: Coho

#### *Chicago Creek Environmental Enhancement Society*

Tim Lemky 250/842-5164

PO Box 152,

South Hazelton, B.C. V0J 2R0

The hatchery, on private property at the location of a pre-existing trout farm, began as a series of five earthen ponds. In the first year of operation, 20,000 Toboggan Creek eyed coho eggs were transferred to a cassette incubator anchored into the lower pond and attached to a small dock at the Chicago Creek hatchery. Incubation was very successful with about 85 per cent of eggs surviving to the swim-up fry stage.

In 1994, a gravity-feed surface water line was installed to supply three small circular tubs for initial rearing. At two grams, fry are clipped and transferred to an earthen rearing pond.

This facility has had problems with the water supply line freezing but a new incubation building and improved supply line should ensure water running through even the most severe winter conditions. The project works with Mission Creek coho stock and saw the first maxillary clipped hatchery coho return in 1998.

The society has an annual contract with the Ministry of Transportation and Highways to move coho upstream of an impassable highways culvert. Members install and operate a counting fence on lower Mission Creek, remove some adults for broodstock, allow about

40 to spawn below the culvert, and transport the rest above the barrier.

First year: 1993

Activity: Hatchery

Location: Chicago, Mission creeks

Persons: 30

Species: Coho

#### *Fort Babine (CEDP)*

Pat Michelle 250/847-8513

Box 4452,

Smithers, B.C. V0J 2N0

The project, just downstream of the outlet of Babine Lake, is unique in that there is not enough head for an "on-land" rearing program.

Rearing is done in floating raceways, which actually float in the Babine River. Eggs are incubated to eyed in a moist incubator, then transferred to cassette incubators in the upstream end of the floating raceways. Chinook eggs go in one raceway, coho in the other. Eggs hatch in the cassettes and fry are ponded into the floating raceways. Raceways water depth is adjusted by raising or lowering them.

Some coho and chinook assessment occurs at the Babine River fence which is downstream of the Fort Babine Hatchery.

First year: 1984/85

Activity: Hatchery

Location: Babine River

Persons: 2 full time, 3 part  
Species: Coho, chinook

#### *Richfield Creek*

Al McCracken 250/696-3221  
Box 36

Topley, B.C. V0J 1Z0

This hatchery program for Upper Bulkley River coho began in 1994 with the installation of one Heath stack incubator in a small shed on Al McCracken's property. A small spring supplies water which is collected in an earthen pond and piped to the incubation/rearing area.

This program has now been discontinued as Al has focused his efforts on other projects in the watershed.

First year: 1994

Activity: Hatchery

Location: Richfield Creek

Persons: 30

Species: Coho

#### *Glenora Chinook Project*

Marilyn Norby 250/235-3144  
Telegraph Creek, B.C.

First year: 1998

Activity: Incubation/rearing

Location: Telegraph Creek

Persons: 5

Species: Chinook

#### *Mission Creek Project*

Under the supervision of Grieg Houlden, Grade 7 classes from New Hazelton Elementary School have

been conducting monitoring and salmon enhancement activities on Mission Creek since 1990. They have been involved in water quality monitoring, aquatic insect monitoring, fry trapping and identification for presence/absence information, fry releases from their classroom aquarium, and reporting of habitat incidents. They have assisted with releases of coho juveniles from the Chicago Creek hatchery.

The Mission Creek Focus Group consists of representatives from Ministry of Transportation and Highways, CN Railway, District of New Hazelton, Village of Hazelton, DFO, Gitskan Fisheries Program, Chicago Creek Community Environmental Enhancement Society and the New Hazelton Elementary School. The group will work on how to conduct local activities in a fish friendly manner.

First year: 1990

Activity: Streamkeepers activities

Location: Mission Creek

#### *Toboggan Creek (CEDP)*

Mike O'Neill 250/847-4458  
R.R. 1,  
Smithers, B.C. V0J 2N0

Toboggan Creek Hatchery is located approximately 15 kms west of Smithers. A small hatchery building includes an incubation room and some indoor rearing containers.

Four large outdoor, earthen raceways are used to rear coho and chinook. Toboggan Creek is the water source but Brandt Brook can be used for incubation and initial rearing as Toboggan Creek water quality can be affected by agriculture in early spring. This helps reduce bacterial infections.

Toboggan Creek is the indicator stream for Upper Skeena coho stocks and the hatchery program includes work on Upper Bulkley River coho, one of the most serious coho conservation concerns in British Columbia.

Three circular tubs have been installed at the hatchery and these tubs will be used for adult holding.

First year: 1984/85

Activity: Hatchery

Location: Bulkley River & tributaries

Persons: 2 full time, 3 part

Species: Coho, chinook

#### *Upper Bulkley River Project*

The Upper Bulkley River Roundtable group, established in 1997, is conducting some

Streamkeepers activities. The group has conducted water quality monitoring, aquatic insect monitoring and fry trapping for presence/absence. The group also took willow clippings for planting in the late spring of 1999.

Additional planting occurred on Richfield Creek in the summer of 2000.

First year: 1997

Activity: Streamkeepers activities

Location: Upper Bulkley River,  
Richfield Creek

Persons: 15

### **Education**

The education program in the area is very popular. Teachers have been very anxious to pilot units from the new *Salmonids in the Classroom*. In the 2000/2001 school year we have 21 schools participating (700 students) and some schools have more than one grade level participating in the program. Students are learning about life cycle, salmon biology and habitat. Many of the classes have been participating in half day field trips which involve conducting aquatic insect surveys, water quality monitoring, fry trapping and identification and habitat surveys.

## **Related Fisheries Contacts:**

### **Habitat Conservation and Stewardship Program**

Patty Menning	250/847-4892	menningp@pac.dfo-mpo.gc.ca	Smithers	HA	Smithers
Bridie O'Brien	250/842-5867	obrienb@bulkley.net	Hazelton	HS	Northwest Stewardship Society
Greg Tamblyn	250/845-2522	greg.tamblyn@cfcdnada.ca	Houston	SC	Nadina Community Futures

# Sandie MacLaurin

## Central coast: Cape Caution to Caamano Sound, east to Tatla Lake



The first year of the new millennium was very busy for salmon-related activities in the Central Coast. One major focus was the sockeye recovery planning and project implementation for Rivers and Smith Inlets. The program involved many Fisheries and Oceans Canada sectors, plus several partners and included a variety of field activities. One highlight was the successful collection of eggs from eight of the nine target systems and completion of a portable sockeye enhancement facility at Snootli Creek Hatchery in Bella Coola. Coho assessment was another area of increased effort with Klemtu, Bella Bella and Ocean Falls communities involved. The data will be the foundation for developing community capacity as well as

indices of abundance and strategic management plans for Central Coast stocks. Long-time CEDP projects in Bella Bella and Klemtu continued to strive toward improved incubation survivals and have successfully explored juvenile coho outplants to under-utilized habitat in their watersheds. Volunteers in Bella Coola are completing the sixth year of the Bella Coola Coho Initiative and can take credit for their contribution towards sustaining healthy local stocks. Partnerships continue to evolve and a new group has formed to access Fisheries Renewal funding for several communities. Education programs are thriving and many students now head "down to the sea" with the addition of Oceans learning activities. Enhancement in the Central Coast is not confined to fish but also refers to additional "resources" through the HCSP program. Check out the new contacts. We see new faces, new projects and good stuff from the ongoing participants.

### Community Projects

#### *Bella Bella (CEDP)*

Jack Larsen 250/957-2661  
Heiltsuk Band Council  
Box 880

Waglisla, B.C. V0T 1Z0

This 20-year veteran of the CEDP program is still going strong today. The hatchery utilizes Heath tray, Atkins cells and bulk box units for incubation and Capilano troughs, circular tubs and saltwater netpen containers for rearing. Hatchery production regularly supports a local commercial and recreational fishery that is highly valued by the community. As well, there have been efforts to use the facility for satellite enhancement of depressed Area 7 chum stocks. Data from operation of an in-river adult fence and regular marking programs of juveniles contributes to program assessment and fisheries management.

First year: 1977

Activity: Hatchery, sea pens,  
Education support

Location: MacLoughlin Creek

Persons: 3

Species: Coho, chum

#### *Bella Coola Watershed Restoration Project*

Patricia McKim 250/982-2598  
Economic Development Officer  
Central Coast Regional District  
Box 186

Bella Coola, B.C. V0T 1C0

This is a community-guided initiative that focuses on habitat improvement & restoration projects as well as collection of biological data to assist with project design, creation of employment, building on local expertise, increasing public awareness, and involving community representatives in planning and decision making.

First year 1997

Activities: Streamkeepers activities

Location: Bella Coola Valley

Persons: 3-10

#### *Central Coast Fishermen's Protection Association*

Randy Hodson 250/982-2929  
Box 773

Bella Coola, B.C. V0T 1C0

This group operates a small mini-hatchery and works co-operatively with DFO's Snootli Hatchery to achieve enhancement goals. They are involved in co-funded coho juvenile and adult assessment projects as well as directing crews to conduct fry salvage, monitor and

manage beaver dams and assist with enhancement programs. In addition to their on-the-river projects, group members assist the community advisor with Streamkeepers training sessions, sit on a local Watershed Restoration Steering Committee, a Regional government fisheries sub-committee, the SFAB and the LRMP to provide input into planning and operational initiatives.

First year: 1981

Activity: Streamkeepers activities,  
Hatchery, assessment,  
Education support

Location: Bella Coola River,  
tributaries

Persons: 15

Species: Coho, chum

#### *Central Coast Partnership Group*

Larry Stranberg 250/799-5744  
Community Futures  
Box 621

Bella Coola, B.C. V0T 1C0

Membership in this group includes local government, native bands (Heiltsuk, Kitasoo, and Nuxalk), and volunteer organizations. The group came together to access Fish Renewal funds and has funded more than \$400 thousand worth of projects over the past two years.

First year: 1998

#### *Klemtu (CEDP)*

Clifford Brown 250/839-1220  
Kitasoo Indian Band

General Delivery

Klemtu, B.C. V0T 1L0

This hatchery facility utilizes Heath, Atkins, bulk box, siphon and Zenger style incubation facilities plus Capilano and circular tub freshwater and netpen saltwater rearing units to meet production targets. For several years a chum "remote rearing" program has been established in a nearby inlet to see if adults will return to the net pen site. It is hoped that these could be selectively harvested while flesh quality is better. Chum fry are differentially marked prior to release so adults can be tracked through regular commercial openings and test fisheries in the inlet. Data is collected for assessment and fisheries management purposes at an adult fence on Kitasoo Creek.

First year: 1980

Activity: Hatchery,  
Sea pen rearing,  
Education support

Location: Kitasoo Creek

Persons: 3

Species: Coho, chum

*Ocean Falls Fish Futures 2000*  
 Jim Hayden 250/289-3813  
 Ocean Falls Improvement District  
 General Delivery  
 Ocean Falls, B.C. V0T 1P0

The project involves collection of data on juvenile and adult coho and adult pink and chum from the Martin River, a highly productive wild system little affected by upstream development. With volunteer and paid personnel, the group completed two juvenile coho mark recapture projects and is conducting adult spawner surveys on a regular basis. Stream temperatures and water levels are also monitored. They hope to have the information used in watershed and community planning.  
 First year: 2000

Activity: Streamkeepers, coho assessment  
 Location: Martin River  
 Persons: 2-3  
 Species: Coho, chum, pink

*Oweekeno Fisheries Program (CEDP)*  
 Nikki Shaw 250/949-8625  
 Oweekeno Nation, Oweekeno Indian Band  
 P.O. Box 3500  
 Port Hardy, B.C. V0N 2P0  
 Enhancement and assessment of famous Wannock chinook and Owikeno Lake sockeye through co-operative arrangements with DFO and other partners. Facilities include an egg-take building, river and saltwater netpens, and

incubation units, all in need of repair. Oweekeno crew participate in capturing broodstock, taking eggs and other field activities and are involved in hands-on fish culture training at Snootli Hatchery where brood is cared for until the band builds sufficient capacity to operate a hatchery facility on their own.

First year: 1982  
 Location: Wannock River, Owikeno Basin tributaries  
 Activities: Egg-takes, fry release, Assessment (Wannock fishwheel & Wannock chinook radio tagging/tracking)  
 Persons: 1-4  
 Species: Chinook, sockeye

*Rivers and Smiths Inlet Watershed Stewardship Partner Group*

Facilitator: Norman Dale, Administrator  
 OKNTC Tribal Council  
 Box 760  
 Bella Coola, B.C. V0T 1C0  
 This diverse group rose out of an initiative started in 1997, co-ordinating project proposals, planning, implementation, fund raising and resource/information sharing for River's Inlet salmon stocks. Members also work at raising awareness about River's Inlet and the challenges to dealing with resource issues there. Recently, the partnership has changed and will be focusing more on longer term strategic planning. This focus

has been recognized by the provincial government and the group has been awarded a grant to pilot the Watershed-based Fish Sustainability Planning process as outlined in a set of guidelines jointly penned by various government agencies. Several on-the-ground projects have been funded through HRSEP and Fish B.C. Funds were also provided by DFO's strategic stock enhancement program. Main projects supported in 2000 were:  
 - Neechanz/Marble and Genesee River sockeye fry out-migration monitoring,  
 - Wannock river estuary seining,  
 - Wannock river fishwheel,  
 - Wannock chinook adult radio telemetry (mark/recapture),  
 - Owikeno Basin sockeye enhancement and Owikeno Band capacity building, and  
 - Habitat restoration projects on the Sheemahant and Machmell/Genesee systems.

First year: 1997  
 Location: Rivers Inlet, Owikeno Basin tributaries and Wannock River, Smiths Inlet (Long Lake Basin)  
 Activity: Assessment, habitat restoration, enhancement  
 Persons: 12-20

*Shotbolt Hatchery*  
 Rivers Inlet Hakai Pass Sportfishing Association  
 c/o Bob Stewart 604/943-2333  
 PO Box 1237  
 Delta, B.C. V4M 3T3

This remote hatchery combined Heath tray incubation with Capilano trough and saltwater net-pen rearing. The Association is looking to sunset enhancement of Kilbella and Chuckwalla chinook so they can assist with rebuilding of other River's Inlet stocks. They are involved with a captive brood program and hope to increase egg targets. There have been several years of marked fry and smolt releases so interception, distribution and survival information can contribute to operational strategies and fisheries management planning.

First year: 1985  
 Activity: Hatchery  
 Location: Chuckwalla, Kilbella rivers  
 Persons: 2 employees, many volunteers  
 Species: Coho, chinook

**Education**

Central Coast education activities involve 21 classes in two school districts. Activities include *Salmon in the Classroom*, aquatic insect and fish anatomy studies, fry releases and field trips to observe a counting fence and fry salvage. High school students are acquainted with local watershed restoration, stewardship, marking, and proposal writing. Students study eulachon life history, traditional fishing/uses and current status and research. Sixty Elderhostel visitors get their feet wet with fry and insect identification plus harbour and estuary tours.

**Related Fisheries Contacts:**

**Habitat Conservation and Stewardship Program**

Terry Palfrey	250/799-5127	palfrey@pac.dfo-mpo.gc.ca	Bella Coola	HA	Bella Coola
Ross Wilson	250/957-2381	rezdawg@hotmail.com	Waglisla	HS	Central Coast Partnership Group
Bob Tritschler	250/799-5763	bestfishes@belco.bc.ca	Bella Coola	SC	Central Coast Partnership Group

**Major Enhancement Facilities**

*Snootli Creek Hatchery*  
 Box 95,  
 Bella Coola, B.C. V0T 1C0  
 Tel: 250/982-2214  
 Fax: 250/982-2971

First year: 1979  
 Location: Bella Coola  
 Species: Chum, chinook, steelhead

# Aleria Ladwig (acting for George Bates)

## Northern Vancouver Island, Tsitika River on east coast to Gold River on west; mainland, Knight's Inlet to Cape Caution



The year 2000 was a year of change and no area can identify with that more than Central Coast. Perhaps one of the largest changes this year (from a DFO perspective anyway) was the Department's adoption of an area-based delivery model, changing the Port Hardy field office to a head office for the entire Central Coast area. In doing so, many faces changed; some familiar faces redirected energy and some new faces joined the team — mine being one of them.

Although new to Central Coast, I easily recognised the incredible efforts and dedication of the hard-working volunteers and contract staff. During my orientation tour provided by Ray Volk, I was introduced to a number of people who willingly commit tremendous time and energy towards the preservation and rebuilding of our salmon stocks. I found it encouraging to see so many individuals, groups and organisations working together towards such admirable goals and I look forward to assisting in their endeavours.

Special thanks to Ray for his hard work, enthusiasm and kind heart!

### Community Projects

#### *Bear Creek Salmonid Enhancement Group (Bear Creek Hatchery)*

Gary Stoner 250/956-3969  
Box 1311  
Port McNeill, B.C. VOP 2R0  
A small hatchery operation working on coho and pink production from Bear/Mills Creek and Hyde Creek, two local streams located between Port McNeill and Port Hardy.  
First year: 1987  
Activity: Hatchery  
Location: Bear/Mills Creek  
Persons: 6-8  
Species: Coho, pink

#### *Gold River Chinook Project (Gold River Hatchery)*

John & Betty Frame 250/283-7724  
Box 986 Fax: 283-7268  
Gold River, B.C. VOP 1G0  
A major PIP facility focused on the production of coho and chinook salmon from the Gold, Burman, and Mooyah Rivers. They operate with assistance from Western Forest Products and Avenor Pulp Mill.  
First year: 1982  
Activity: Hatchery  
Location: Gold River  
Persons: 9-10  
Species: Chinook

#### *Gwa'ni Hatchery (CEDP)*

Hank Nelson 250/956-4712  
Box 210 Fax: 956-4733  
Alert Bay, B.C. VON 1A0  
First year: 1977  
Activity: Hatchery  
Location: Nimpkish River  
Persons: 4  
Species: Coho, chum, chinook

#### *Hoeya Sound Lodge*

Dean Wyatt 250/337-1953  
8841 Driftwood Road,  
Black Creek, B.C. V9J 1A8  
Hoeya Sound Lodge owners and staff are conducting various assessment projects in the Knight Inlet area.  
First year: 1997  
Activity: Adult tagging, Stream survey

#### *Kyuquot Elementary/Secondary School*

Tom Stevens 250/332-5260  
General Delivery Fax: 332-5332  
Kyuquot, B.C. VOP1J0  
Students attending Kyuquot Elementary/Secondary School operate a small-scale hatchery facility focused on coho and chum production.  
First year: 1995  
Activity: Hatchery  
Location: Chamiss River  
Persons: 14-16  
Species: Coho, chum

#### *Mainland Enhancement of Salmonid Species Society (Scott Cove Hatchery)*

Bill Proctor 250/949-1198  
General Delivery  
Simoom Sound, B.C. VON 2P0  
With assistance from International Forest Products Ltd (Interfor), the Mainland Enhancement of Salmonid Species Society is able to operate this PIP facility in the remote Scott Cove setting. The focus is on coho production.  
First year: 1982  
Activity: Hatchery  
Location: Scott Cove Creek  
Persons: 6-8  
Species: Coho

#### *Nimpkish Valley Rod & Gun Club (Woss Community Hatchery)*

Ray Lutz 250/281-2257  
Box 5127 Fax: 281-4244  
Woss, B.C. VON 3P0  
This is a very active community project of the Nimpkish Valley Rod & Gun Club and operates in assistance with Canfor Forest Products.  
First year: 1996  
Activity: Hatchery  
Location: Nimpkish River  
Persons: 8  
Species: Coho, chinook, steelhead

#### *Northern Vancouver Island Salmonid Enhancement Association (NVISEA) (CEDP) (Quatse River Hatchery)*

Ken Fuller 250/949-9022  
Box 1409 Fax: 949-5195  
Port Hardy, B.C. VON 2P0  
NVISEA is a very active association on the north end of Vancouver Island. They run Quatse Hatchery and assist with fry rearing from a number of systems at Marble River Hatchery. They're also actively involved in habitat assessment and restoration initiatives thanks to the help of Karl Wilson, their Stewardship Coordinator.  
First year: 1977  
Activity: Two Hatcheries (1PIP), Habitat Assessment and restoration  
Location: Quatse and Marble rivers  
Persons: 3  
Species: Pink (even years), coho, chum, chinook, steelhead

#### *Port Hardy Fish & Wildlife Association*

Rob Drimel 250/949-7540  
Box 175  
Port Hardy, B.C. VON 2P0  
Club operates a rearing channel for Marble River steelhead.  
First year: 1988  
Activity: Hatchery and channel

Location: Marble River steelhead program, Dry Creek  
 Persons: 10  
 Species: Steelhead

*Port Hardy Streamkeepers*

Antonia Huber  
 Box 467,  
 Port Hardy, B.C.  
 First year: 1997  
 Activity: Streamkeepers activities

*Port McNeil Chinook Club (Kokish River Hatchery)*

Ray Bentley 250/956-3518  
 Box 1239  
 Port McNeill, B.C. VON 2R0  
 A PIP hatchery facility supported by Stolt Sea Farms and Canadian Forest Products Ltd.  
 Activity: Hatchery  
 Location: Kokish River  
 Persons: 12-15  
 Species: Coho, chum, chinook, pink, steelhead

*San Josef Heritage Park*

Doug Desjarlius 250/288-3682  
 Box 38,  
 Holberg, B.C. VON 1Z0  
 Instream feeding and habitat restoration.  
 First year: 1996

*Steamer Point Lodge*

Edward Rowsell 250/934-66521  
 PO Box 316  
 Tahsis, BC VOP 2X0  
 A local hatchery working with coho.  
 First year: 1996  
 Activity: Hatchery  
 Location: Lord Creek  
 Persons: 3 - 4  
 Species: Coho

*Tahsis Enhancement Group (Tahsis River Hatchery)*

Les Dowding 250/934-6249  
 Box 493 Fax: 934-6249  
 Tahsis, B.C. VOP 2X0

With the support of the Village Council, this hatchery facility is located in the public works yard and is run by the village workers. Additional assistance is provided by the local logging and sawmill company.

First year: 1984  
 Activity: Hatchery  
 Location: Tahsis  
 Persons: 6-8  
 Species: Coho, chinook

*Warner Bay Project (Warner Creek Hatchery)*

Dave and Marlene Smith  
 Box 445 250/949-4972  
 Port McNeill, B.C. VON 2R0  
 Operates a successful hatchery facility in the remote location of Warner Bay.  
 First year: 1986  
 Activity: Hatchery  
 Location: Warner Bay  
 Persons: 10  
 Species: Coho

*Western Forest Products Ltd. (Colonial/Cayeghle Hatchery)*

Mike Dietsch 250/956-4446  
 Box 250 Fax: 956-4448  
 Port McNeill, B.C. VON 2R0  
 A hatchery facility that is in the process of successfully re-establishing a chinook run in Cayeghle River  
 First Year: 1986  
 Activity: Hatchery

Location: Colonial, Cayeghle rivers  
 Persons: 15-20  
 Species: Coho, chinook, steelhead

*Western Forest Products Ltd. (Cordy Creek Hatchery)*

Jeff Mosher 250/956-4446  
 Box 250 Fax: 956-4448  
 Cordy Creek Hatchery is one of the longest-running hatcheries in the area. Thanks to a successful transplant program, the broodstock now has been collected from Cordy Creek for three consecutive years.  
 First year: 1978  
 Activity: Hatchery  
 Location: Cordy Creek  
 Persons: 10  
 Species: Coho, chum, chinook, steelhead

*Western Forest Products Ltd. (Marble River Hatchery)*

Grant & Debbie Anderson  
 Box 250 250/949-4342  
 Port McNeill, B.C. Fax: 956-4448  
 VON 2R0  
 The Marble River Hatchery is one of the largest and longest-standing PIP projects on the North Island.  
 First year: 1981  
 Activity: Hatchery, Rearing channel  
 Location: Marble River  
 Persons: 10  
 Species: Coho, chinook

*Zeballos Enhancement Group (Zeballos River Hatchery)*

John Crowhurst 250/761-4292  
 Box 25 250/761-4221  
 Zeballos, B.C. VOP 2A0

This facility has undergone serious renovations with construction of the new hatchery building. John's hard work is definitely paying off; it will be a beautiful building when it's finished.

First year: 1990  
 Activity: Hatchery  
 Location: Zeballos River  
 Persons: 6-8  
 Species: Chinook

**Education**

The education program is one of particular interest for me. Lorraine Landry, the education coordinator, and I currently support more than a dozen schools in many communities on the north end of Vancouver Island, providing classroom incubators, adult dissections and educational discussions on renewable resources. Dedicated teachers such as Gale Moncton and Carol White from Eagle View Elementary have actively participated and supported the *Salmonids in the Classroom* program for more than 12 years, educating children to take stewardship in their resource with fun and enthusiasm. I look forward to working with the dedicated teachers (and of course the kids, too, who are always lots of fun) and hope to expand the education program in the Central Coast area.

**Related Fisheries Contacts**

**Habitat and Conservation Stewardship Program**

George Bates	250/949-6181	batesg@pac.dfo-mpo.gc.ca	Port Hardy	AC	Port Hardy
Shelley Jepps	250/902-0429	jeppss@pac.dfo-mpo.gc.ca	Port Hardy	HA	Port Hardy
Michael Roth	250/286-5711	michaelroth@dcrc.ca	Campbell River	HS	District of Campbell River
Kathy Campbell	250/287-4423	kathycam@mars.ark.com	Campbell River	SC	Discovery Coast Greenways Land Trust
Doug McCorquandale	250/956-2302	nrm@island.net	Alert Bay	SC	'Namgis First Nation
Paul Smith	250/283-2503	pmsmith@oberon.ark.com	Gold River	SC	Regional Aquatic Management Society
Karl Wilson	250/949-9022	karlw@island.net	Port Hardy	SC	Northern Vancouver Island Salmonid Enhancement Association

# Bryan Allen

## Central portion, east coast of Vancouver Island and adjacent mainland inlets



How fast the year has gone! It has been a year of mixed "blessings" for the enhancement volunteers and Streamkeepers this past year. Some very real progress has been made in restoring and creating new fish habitat with funding from Fisheries Renewal BC, HRSEP, and the Urban Salmon Habitat program. Just a few of the projects that stand out in this area are Beach and Grandon creeks, Chef Creek, Millard Creek, Oyster River Lower Side channel and the Phillips Lake Embayment Project. To the others, too numerous to mention, you are not forgotten either!

In addition, the community continues to donate significant amounts of dollars and services that make a lot of the programs possible.

Again, the volunteers are the ones that deserve a great big Thank You from the community for spending so much of their time to assist our fisheries resource. Thanks are also due to the great support team in this area, which includes the hatcheries, the Resource Restoration staff in Nanaimo and Campbell River and others such as D.R. Clough Consulting.

### Community Projects

#### *Bear Creek Pond*

Paul Gurr 250/336-2357  
Site 697, Comp. 3, RR#6  
Courtenay, B.C. V9H 8H9  
Paul is monitoring the survival of salvaged coho.  
First year: 1993  
Location: Millard Creek  
Activity: Rearing pond  
Persons: 4

#### *Big Bay Community Association*

Larry Johnson  
c/o Nanook Lodge  
General Delivery  
Stewart Island, B.C. V0P 1V0  
Working in conjunction with the Gillard Pass Fisheries Association, the group has been collecting DNA samples from area chinook and coho and participating in a catch and release tagging study in Phillips Arm.  
First year: 1989  
Activity: Small hatchery,  
Fry stocking,  
Pen rearing  
Location: St. Albys Lake,  
Phillips River  
Persons: 15  
Species: Coho, chinook  
(See also Gillard Pass)

#### *Brooklyn Creek Streamkeepers*

Mary Maclean 250/339-7160  
644 Totem Cres.  
Comox, B.C. V9M 3J3  
The Brooklyn Creek Streamkeepers have been actively involved in watershed inventory and monitoring as well as community awareness, bank restoration, and clean-up.  
First year: 1998  
Activity: Streamkeeping,  
Habitat restoration  
Location: Comox  
Persons: 20

#### *Discovery Coast Greenways Land Trust*

Jennifer Kivela 250/287-3785  
PO Box 291  
Campbell River, B.C. V9W 5B1  
Along with being the "employer of record" for the Campbell River stewardship coordinator, the Land Trust has taken on coordinating Streamkeepers training in the Coast Discovery area.  
Location: Campbell River  
Persons: 12

#### *Campbell River Fish & Wildlife Association*

Karen Furber 250/286-0952  
P.O. Box 217  
Campbell River, B.C.  
Streamkeeping, coho colonization

First year: 1991  
Activity: Fry planting,  
Stream monitoring  
Location: Coho (Mohun) Creek  
Persons: 10  
Species: Coho

#### *Courtenay and District Fish & Game Protective Association*

Neil Brodie/Lloyd Patten  
Box 3177 250/338-4035  
Courtenay, B.C. V9N 5N4  
In spite of generally low coho returns to the Courtenay area, the efforts of the club on the Trent River are maintaining an excellent escapement. The club is presently planning new fish enhancement strategies at the new clubhouse at Comox Lake.  
First year: 1979  
Activity: Spawning and rearing channel, hatchery,  
Habitat creation  
Location: Arden Creek, Trent,  
Tsolum, Puntledge rivers  
Persons: 25  
Species: Coho

#### *Englishman River Enhancement/T. Buck Suzuki Environmental Foundation*

Clinton Young 260/248-4393  
671 Forsyth Ave.  
Parksville, B.C. V9P 1G6  
This group is doing an excellent job

of enhancing the local fish stocks. Chinook escapements have been up to record levels in recent years.  
First year: 1992  
Activity: Incubation, fishway maintenance,  
Habitat creation  
Location: Englishman River  
Persons: 10  
Species: Coho, chum, chinook,  
pink

#### *Fanny Bay Enhancement Society*

Judy Ackinlose 250/335-0010  
Site 23-C9  
Fanny Bay, B.C. V0R 1W0  
The society continues to ride a rollercoaster when it comes to its projects. Several excellent habitat creation projects in conjunction with the Resource Restoration Division, Vancouver Island Highway Project and Weyerhaeuser will undoubtedly result in increases in the salmon populations in the area. The pink salmon program on Coal Creek is being cancelled because fall low water makes it impossible for these fish to gain access to the stream. Later arriving chums will be enhanced instead. Adult coho returns to Rosewall Creek were excellent this past year. The fry salvage program in a number of Baynes Sound streams has proven a

real winner with the majority being raised to smolt.  
 First year: 1993  
 Activity: Hatchery, colonization, Fry salvage, Habitat creation, Stream stewardship  
 Location: Baynes Sound streams  
 Persons: 20  
 Species: Coho, chum, chinook, pink

*Gillard Pass Fisheries Association*  
 Greg Barlow 250/286-0018  
 P.O. Box 425  
 Campbell River, B.C. V9W 5B6  
 This group has been ever busy. The main focus has been the rebuilding of the adult chinook holding facilities at Phillips Lake with funding from Fisheries Renewal BC and the Pacific Salmon Foundation. Assistance has also been received from the Omega Salmon group and the B.C. Salmon Farmers Association. Seining for adult chinook in the Phillips River in August has indicated an early run of fish that will be targeted for enhancement in the future. Coho returns have been promising, but major predation by seals and sea lions made short work of most of the coho holding off Ito Creek.  
 First year: 1988  
 Activity: Satellite hatchery, Habitat improvement  
 Location: Phillips River, Ito Brook, Sonora Island  
 Persons: 10  
 Species: Coho, chinook  
 (See also Big Bay Community Association)

*Grant B. Culley Jr. Foundation*  
 Mike Patterson  
 PO Box 286  
 Campbell River, B.C. V9W 5B1  
 Mike had his first release of approximately 50k chum fry in the spring of 2000. Thanks are due to the Quadra Island Salmon Enhancement Society for providing the eyed eggs.  
 First year: 1998  
 Activity: Stream stewardship, Incubation

Persons: 20  
 Species: Chum  
*Island Highway Concerned Citizens Group*  
 Peggy Carswell 250/337-8348  
 Box 179,  
 Merville, B.C. V0R 2M0  
 What a difference a little communication will make. The efforts to work with and guide the mitigation efforts of the Vancouver Island Highway Project have been quite gratifying. An excellent working relationship has now developed with VIHP biologists that has translated into additional fish habitat.  
 First year: 1997  
 Activity: Streamkeepers activities, Advocacy, Stream stewardship, Community awareness  
 Persons: 50+

*Kiwanis of Courtenay*  
 Don Woodcock 250/338-1970  
 635 Pidcock Avenue  
 Courtenay, B.C. V9N 3E4  
 The Kiwanis hatchery is again the home to stocks from Roy Creek and the Oyster River, as well as Millard Creek. Excellent groundwater makes all the difference.  
 First year: 1982  
 Activity: Small hatchery  
 Location: Millard Creek, Tsable River  
 Persons: 12  
 Species: Coho, chinook  
 (See also Roy Creek)

*Klaboose First Nation*  
 Flavian Harry 250/935-6536  
 Box 9  
 Squirrel Cove, B.C. V0P 1K0  
 There has been no activity this past year on developing a new hatchery for Cortes Island. Instead the band has been putting increased effort into long term planning. Efforts to increase Island coho stocks will continue with Quinsam coho eggs.  
 First year: 1992  
 Activity: Cassette incubator, Fry stocking  
 Location: Cortez Island streams

Persons: 17  
 Species: Coho, chum  
*Lasqueti Island Streamkeepers*  
 Karl Darwin 250/333-8633  
 Homer Stephens 250/333-8832  
 General Delivery, False Bay PO,  
 Lasqueti Island, B.C. V0R 2J0  
 While Lasqueti Island may not have large salmon streams, it has enough small ones needing work that a dedicated bunch of streamkeepers has come forward to take on the task. This is a continuation of the program that was initiated in the early 1990s by the Darwin family. Incubation boxes for chum and coho have been installed on several streams and stocked with Big Qualicum hatchery eggs. The group has been improving the habitat with bank restoration, woody debris installation, and gravel addition.  
 First year: 1992

Activity: Incubation, habitat restoration and improvement.  
 Persons: 8  
 Species: Coho, chum

*Little River Enhancement Society*  
 Frank Shepherd 250/339-3027  
 RR#2, Site 298, C-11,  
 Courtenay, B.C. V9M 5M9  
 The highlight for LRES in 2000 was completion of the first year of a major downstream juvenile trapping effort. If funding is available, the program will be extended to cover a complete cycle. The first major return of chum from a transplant (Puntledge) arrived in fall 2000.  
 First year: 1983  
 Activity: Hatchery  
 Location: Little River  
 Persons: 20  
 Species: Coho, chum, cutthroat

*Millard Creek Streamkeepers*  
 Brian Bloomfield, 250/338-7509  
 Barb Porter  
 RR#6, 3692, C15,  
 Courtenay, B.C. V9N 8H9  
 A great year for the Millard/Piercy Streamkeepers, with increased

landowner contact and the finalization of the watershed management plan, as well as habitat restoration activities (a big "thank you" to BC Hydro).  
 First year: 1995  
 Activity: Streamkeepers activities  
 Habitat creation,  
 Stream monitoring  
 Location: Millard Creek/Piercy Creek  
 Persons: 8

*Morrison Creek Streamkeepers*  
 Jim Palmer 250/338-1867  
 241 Woods St.  
 Courtenay, B.C. V9N 3Y7  
 In 2000, the Morrison Creek Streamkeepers addressed a longstanding fish passage problem on lower Morrison Creek. Working with the City of Courtenay, DFO's Resource Restoration and Habitat Divisions, they backwatered the first cuvert and stabilized the downstream banks. The group intends to address riparian degradation further upstream in the future.  
 First year: 1999  
 Activity: Streamkeeping/restoration  
 Persons: 10  
 Location: Courtenay

*Nile Creek Enhancement Society*  
 Rod Allan 250/757-9384  
 6315 Island Highway West  
 Qualicum Beach, B.C. V9K 2E4  
 Pinks everywhere! Transplants of Quinsam hatchery pink eggs to the Nile Creek incubators have generated an active beach sports-fishery, a nice extension of the Big Qualicum hatchery beach coho fishery in the same area. With additional funding, the plan is to work with the Resource Restoration Division to increase the size of the spawning and rearing channel.  
 First year: 1995  
 Activity: Stewardship, incubation  
 Location: Nile Creek  
 Persons: 10  
 Species: Pink

*Oyster Bay Streamkeepers*

Karl Fuchs and Diane Wilson  
250/923-4267  
4490 Gary Lane,  
Campbell River, B.C.

No large breakthroughs in the plan to restore several creeks in the Oyster Bay area yet. Background information has been gathered that will allow an informed decision on project direction soon.

First year: 1995  
Activity: Streamkeepers, Assessment  
Location: Oyster Bay  
Persons: 2

*Oyster River Enhancement Society*

Bud Skinner c/o 250/337-5967  
Box 93  
Black Creek, B.C. V9J 1K8

It just keeps getting better for ORES. A close working relationship with the Resource Restoration Division has been very beneficial with the recent showcase being completion of another spawning and rearing channel with partners from Forest Renewal and the private forest sector. While chum returns were depressed in 2000, as with most of the east coast of Vancouver Island, strong chinook and coho returns nicely offset any disappointment.

First year: 1983  
Activity: Spawning channel, Hatchery, rearing  
Location: Oyster River, Woodhus Cr.  
Persons: 100  
Species: Coho, chum, chinook, pink

*Parksville-Qualicum Fish & Game Association*

Jack Greenway 250/752-6885  
Box 988  
Parksville, B.C. V0R 2S0

The dry fall in 2000 made it rough for fry rearing in French Creek as well as for adults trying to enter the watershed. Adults holding off the creek waiting for water either strayed or were seal fodder and the escapement was a disappointment.  
First year: 1980  
Activity: Small hatchery, Fry feeding, colonization

Location: French Creek  
Persons: 15  
Species: Coho

*Parksville Streamkeepers*

Rob Adams 250/248-4901  
c/o Park Sands Beach Resort,  
105 E. Island Highway,  
Parksville, B.C.

Rob and his streamkeepers have been involved in a number of activities in the Parksville area. These include mapping, restoration and storm drain marking. They plan to address a major bank erosion on lower French Creek.  
First year: 1998

Activity: Streamkeeping and restoration

Location: Parksville area  
Persons: 25

*Portuguese Creek Stewards*

Gail Slater 250/337-8175  
RR#4, Site 435, Comp 6,  
Courtenay, B.C.

Like the Everyready Bunny, the streamkeepers just keep going. A close working relationship with the Tsolum River Restoration group is expected to provide more opportunities for restoration activities

First year: 1997  
Activity: Streamkeepers activities

*Project Watershed Society*

Chris Bruels 250/339-1619  
Box 3007,  
Courtenay, BC V9N 5N3

The society continues to oversee the Streamkeepers program in this area. In addition, they are very active in watershed stewardship in both the urban and rural areas with agricultural fencing of riparian areas and estuary awareness as important facets of their program.  
First year: 1992  
Activity: Coordinates the Streamkeepers Program.

*Quadra Island Salmon Enhancement Society*

Don McEachern 250/285-2193  
Box 413  
Quathiaski Cove, B.C. V0P 1N0

The group has been operating a Coulter-Boisvert inclined panel counting fence on Village Bay Creek, which has made life a lot easier. The fence allowed them to easily collect broodstock for the hatchery and provide accurate counts to Stock Assessment. DFO Resource Restoration may initiate more habitat work as a result.

First year: 1978  
Activity: Hatchery, stewardship, Education, habitat restoration and enhancement

Location: Quadra Island streams  
Persons: 20  
Species: Coho, chum

*Qualicum Beach Streamkeepers*

Faye Smith 250/752-9297  
221 Elizabeth Ave.,  
Qualicum, B.C. V9K 1G4

The Grandon Creek fishway was nearing completion in 2001 but, with no guarantee that all the funds will become available at any specific time, there is no firm date for completion. Beach Creek also received some TLC, with improvements being made to the tidewater culvert entrance and some upstream areas.

First year: 1995  
Activity: Streamkeepers activities  
Location: Beach, Grandon creeks  
Persons: 20

*Ross Ponds*

Chip Ross 250/336-8377  
Site 699, C. 5, RR #6,  
Courtenay, B.C. V9N 8H9

Chip is rearing Millard Creek coho in three of six ponds on his property. He has also taken on another job as the Vice President of the Millard/Piercy Watershed Stewards  
First year: 1997  
Activity: Habitat creation  
Persons: 2

*Roy Creek Salmonid Enhancement*

Terry Carter 250/336-8486  
Box 1036,  
Royston, B.C. V0R 2V0  
Seals! That is too often the story

with low water in the fall providing easy pickings for seals in the local estuary. As a result, returns can be weak. In the future, I expect the group will work with the HSCP Stewardship Coordinator to initiate an enhanced stewardship program for Roy Creek.

First year: 1981  
Activity: Small hatchery, Rearing ponds  
Location: Roy Creek  
Persons: 12  
Species: Coho

*Sayward Fish & Game Association*

Ian Sutherland 250/282-3244  
P.O. Box 154  
Sayward, B.C. V0P 1R0

"It wasn't really that bad!" That's the word about an outbreak of a blood parasite *Crytobia sp.* in Salmon River pink salmon. While up to 30,000 adult pinks may have died as a result of the outbreak, more than 200,000 were not affected. There was no sign of the parasite in the excellent return of large coho returning to the collection fence. However, the group is investigating unconfirmed reports of infected resident trout and coarse fish.

First year: 1978  
Activity: Hatchery, colonization  
Location: Memekay, Salmon rivers  
Persons: 6  
Species: Coho

*Storries Creek Streamkeepers*

c/o Grant Erickson 250/923-1005  
3956 Thirk Street  
Campbell River, B.C. V9H 1H3

The crew has been very busy working with the Campbell River Community Fisheries Initiative funded by FRBC. A downstream/upstream fence monitored smolt numbers was operated in the spring of 2000 in Storries and Woods creeks. Habitat improvements were also undertaken in Storries and Woods, including an estuary groin. The estuary groin deflector that was built with the support of the Lions Club has proven its value, keeping log build-ups to a minimum.  
First year: 1994

Activity: Inventory/assessment  
Habitat creation  
Location: Storries, Woods creeks  
Persons: 12

*Tsolum River Restoration Society*  
Stewart Duncan 250/337-5534  
c/o 4916 Island highway N.,  
Courtenay, B.C. V9N 5Z1  
The TRRS has made a major  
commitment to improve the health  
of a much-battered river system.  
The workplan is multi-faceted,  
involving advocacy (to get the acid  
mine drainage cleaned up),  
tributary restoration, side channel  
development, education, assess-  
ment, and stewardship. The group  
also is working closely with the

Puntledge hatchery to restore pinks  
and chum in the system.  
First year: 1994  
Location: Tsolum River, tributaries  
Species: Chum, pink

*Willow Creek Watershed Society*  
Charles Desorcy 250/923-3612  
PO Box 392  
Campbell River, B.C. V9W 5B6  
First year: 1995  
Activity: Stewardship, restoration  
Location: Willow Creek  
Persons: 25

## Education

Education coordinator: Sarah  
Casley c/o Big Qualicum Hatchery,  
250/757-8412.

The program involves 33 schools  
and approximately 1,320 students  
from kindergarten to Grade 12 in  
the Parksville/Qualicum and  
Comox Valley school districts. The  
educational activities include  
*Salmonids in the Classroom*, an  
Aquatic Invertebrate Study,  
classroom incubators, fish

dissections, stream habitat, riparian  
zones, conservation and watershed  
stewardship concepts and field trips.  
The more complex scientific  
studies, such as water quality  
testing and stream surveys, are  
geared to the more advanced  
grades. New curriculum packages  
being introduced are *Project Wet*  
*BC* and *Fish Smart*.

## Related Fisheries Contacts: Habitat and Conservation Stewardship Program

Jo-Anne McDonald	250/339-4903	mcdonaldjo@pac.dfo-mpo.gc.ca	Comox	HA	Comox
Allison Mewett	250/334-6000	amewett@rdfs.bc.ca	Courtenay	HS	Regional District of Comox- Strathcona
Heather Johnstone	250/334-8823	hjohnstn@island.net	Courtenay	SC	CFDC Strathcona

## Major Enhancement Facilities

*Little Qualicum River Hatchery*  
4745 Melrose Rd.  
Qualicum Beach, B.C. V0R 1V3  
Tel: 250/752-3231  
Fax: 250/752-2184  
First year: 1978  
Location: Little Qualicum River  
Species: Chum, chinook,  
steelhead

*Big Qualicum Hatchery*  
215 Fisheries Rd.  
Qualicum Beach, B.C. V9K 1Z5  
Tel: 250/757-8412  
Fax: 250/757-8741  
First year: 1963  
Location: Qualicum River  
Species: Chum, chinook, coho,  
steelhead

*Puntledge River Hatchery*  
Box 3111  
Courtenay, B.C. V9N 5N3  
Tel: 250/338-7444  
Fax: 250/338-5362  
First year: 1979  
Location: near Courtenay  
Species: Chum, chinook, coho,  
pink, steelhead

*Quinsam River Hatchery*  
4217 Argonaut Rd.  
Campbell River, B.C. V9G 1B3  
Tel: 250/287-9564  
Fax: 250/286-0261  
Quinsam Hatchery offers  
outstanding ongoing education  
support to School District 72 in  
Campbell River.  
First year: 1974  
Location: near Campbell River  
Species: Coho, chinook, pink,  
steelhead

# Barry Cordocedo

Central west coast of Vancouver Island, east to Nanaimo, south to Chemainus



HEB Community Involvement groups and volunteers continue to show commitment and enthusiasm for their efforts to protect and restore salmon stocks and fish habitat. Increasingly, groups and individuals are becoming active in habitat work and in stream and watershed stewardship. That offers hope for the future of the Island's streams and their fish stocks.

## Community Projects

### *Alberni Salmon Enhancement Society*

Jake Leyenaar 250/723-5143  
6231 Moore Road

Port Alberni, B.C. V9Y 7J8

A new hatchery/resource centre has been constructed on Kitsuksis Creek at the McLean Mill Historic Site.

Education is an important component.

First year: 1979

Activity: Incubation, fry stocking

Location: Plestid, Dry, Rogers, Kitsuksis creeks

Persons: 25

Species: Coho

### *Alberni Valley Enhancement Association (AVEA)*

Dave Chitty 250/723-3242  
RR#2 Site 233 C4

Port Alberni, B.C. V9Y 7L6

A collection of enhancement and stewardship groups working collectively to inform, involve, promote habitat awareness/protection and to assist with recovery/sustainability of aquatic resources, particularly fish populations.

First year: 1995

Activity: Education  
Habitat protection/  
assessment/restoration  
Stock enhancement/  
assessment

Location: Port Alberni

Persons: 100

### *Cherry Creek Enhancement Society*

Dave Chitty 250/723-3242  
RR#2 Site 233 C4

Port Alberni, B.C. V9Y 7L6

Project focus is habitat restoration and coho assessment. Society and students operate a downstream fence to provide data for stock assessment in the spring.

First year: 1990

Activity: Habitat improvement,  
Juvenile assessment,  
Education

Persons: 100

Location: Cherry Creek

### *Halalt First Nation*

Bert Thomas 250/246-4736  
RR #1 Chemainus Rd.

(8017 Chemainus Road)

Chemainus, B.C. V0R 1K0

Project is a joint AFS/HEB operation. Staff provide operational support such as broodstock collection to Ladysmith Sportsmen's Club.

First year: 1992

Activity: Habitat improvement,  
Stock enhancement,  
Stock/habitat assessment

Location: Chemainus River,  
Bonsall Creek

Persons: 4

Species: Coho, chum

### *Huu-ay-abt First Nation (Pachina River)*

Stefab Ochman

P.O. Box 70

Bamfield, B.C. V0R 1B0

Efforts at the small scale hatchery in Bamfield include coho and chinook restoration. Project assists Nitinat Hatchery with Sarita chinook. Other efforts include habitat restoration and education/

stewardship.

First year: 1997

Activity: Hatchery,  
Public awareness

Location: Pachena River

Species: Coho

### *Huu-ay-abt First Nation (Sugsaw Creek)*

Stefab Ochman

P.O. Box 70

Bamfield, B.C. V0R 1B0

A small scale facility focused on chum restoration. Works closely with Nitinat Hatchery.

First year: 1996

Activity: Hatchery, habitat  
assessment

Location: Sugsaw Creek

Species: Chum

### *Ladysmith Sportsmen's Club*

Greg Smith 250/245-3660  
12366 Pictou Road,

Ladysmith, B.C., V9G 1J4

A small scale hatchery located on Bush Creek. Enhancement efforts are directed at chum and coho stocks in the Ladysmith harbour area. Project also has an educational component.

First year: 1993

Activity: Incubation, stocking,  
Education

Location: Bush Creek

Persons: 15 staff and volunteers

Species: Coho, chum

### *Lantzville/Nanoose Streamkeepers*

John Dunn 250/390-4229  
7090 Winslow

Lantzville, B.C. V0R 2H0

Project is a joint AFS/HEB initiative;

focusing on habitat assessment/restoration, stock assessment and fry salvage activities.

First year: 1997

Activity: Habitat assessment/  
restoration, stock  
assessment, fry salvage

Location: Lantzville and Nanoose

Persons: 20

Species: chum, coho

### *Malaspina College*

Frank Dalzeil 250/741-8739  
900 - 5<sup>th</sup> Street

Nanaimo, B.C. V9R 5S5

This small scale hatchery uses city water. Staff work closely with coho stock assessment at PBS. Main focus is coho smolt production and stock assessment.

First year: 1985

Activity: Hatchery, assessment,  
Education

Location: Chase River

Persons: 40

Species: Coho

### *Nanaimo River Salmonid Enhancement Project (CEDP)*

Patti McKay and

Henry Bob 250/245-7780  
420 Albert Street

Nanaimo, B.C. V9R 2V7

This production facility uses both river and well supply systems.

Projects include an education component, *Gently Down the Stream*, and a multi-partnership program, *Salmon in the City*, on the Millstream River.

First year: 1979

Activity: Hatchery,  
Lake and sea pens,

Assessment Location: Nanaimo River Persons: 5 Species: Coho, chinook, chum	<i>Tla-o-qui-ahlt First Nations (CEDP)</i> Terry Tom 250/725-3233 Box 18 Tofino, B.C. V0R 2Z0 This hatchery is in a remote location with no hydro power; its main source is propane. Enhances Lower Kennedy River chinook. First year: 1984 Activity: Moist cassette incubation, lake and sea pens Location: Kennedy River Persons: 5 Species: Chinook	Box 255 Ucuellet, B.C. V0R 3A0 A satellite facility located in Ucluelet harbour. Enhancement efforts are directed towards chinook, coho, and chum. Project assists Tofino PIP hatchery staff with broodstock collection. First year: 1981 Activity: Hatchery, lake pens Location: Thornton Creek Persons: 3-plus Species: Coho, chinook, chum	tools and materials for various Nanaimo area schools. First year: 1992 Activity: Streamkeepers program Classroom incubation, Education, <i>Gently Down the Stream</i> programs Persons: 1,800 - 2,000 Species: Coho, chum
<i>Sproat Lake Salmon Enhancement</i> Phil Edgell 250/724-6244 RR#3 Site 331 C12 Port Alberni, B.C. V9Y 7L7 The group's main theme and interest is habitat restoration activities such as culvert removal and bank stabilization, minor enhancement, and education. First year: 1993 Activities: Habitat improvement, Fry salvage, assessment, Enhancement Location: Sproat Lake	<i>Tofino Salmon Enhancement Society</i> Mike White 250/725-3435 Box 42 Tofino, B.C. V0R 2Z0 Enhancement efforts of this small scale hatchery at Tofino are chinook and coho restoration. The target rivers are remote. Project works closely with Thornton Creek CEDP facility and stock assessment. First year: 1985 Activity: Hatchery, sea pens Location: Cypre, Tranquil, Kootowis rivers Persons: 12 Species: Coho, chinook	<i>Thornton Creek Volunteers</i> Doug Kimoto 250/726-4236 PO Box 77 (855 Peninsula Rd.) Ucuellet, B.C. V0R 3A0 A community project focused on coho stock enhancement and habitat restoration, especially spawning and rearing habitat. First year: 1981 Activities: Fry stocking, Instream incubation, Stream rehabilitation Location: Lost Shoe, Salmon creeks Persons: 16 Species: Coho	
<i>S.T.R.E.A.M.S</i> Terry Petras 250/246-4988 P.O. Box 808 Chemainus, B.C. V0R 1X0 Group's main activity is habitat improvements — bank stabilization, stream flow improvements, improved spawning and rearing habitat — on Matthews Creek. First year: 1990 Activity: Habitat improvement, Stock assessment Location: Mathews Creek Persons: 12 Species: Coho	<i>Thornton Creek Enhancement Society (CEDP)</i> Richie Smith 250/726-7566	<i>Watership Foundation</i> Don Lowen 250/388-4756 Winston Crescent Victoria, B.C. V8X 1S2 Creates funding partnerships to purchase environmental/education	<b>Education</b> The Nanaimo school program continues to be popular and beneficial in the Nanaimo and Ladysmith areas. In School District 68, 25 schools participate in the educational program, which involves approximately 2,000 students. Activities include classroom incubation, <i>Salmonids in the Classroom</i> , the field program <i>Gently Down the Stream</i> at Nanaimo community hatchery, and storm drain marking. Coho and chum eggs are supplied to schools by: Nanaimo River CEDP, Chase River and Ladysmith Sportsman's Club PIP hatcheries. DFO's Community Involvement Education Program is forming new partnerships both internally and externally such as the DFO Oceans Outreach Program and the Nanaimo <i>Salmon in the City</i> school program.

## Related Fisheries Contacts:

### Habitat and Conservation Stewardship Program

John Lamb 250/756-7277 lambj@pac.dfo-mpo.gc.ca	Nanaimo Area Co	Nanaimo
Brian Tutty 250/756-7265 tuttyb@pac.dfo-mpo.gc.ca	Nanaimo Area Co	Nanaimo
Michelle Bigg 250/756-7144 biggm@pac.dfo-mpo.gc.ca	Nanaimo HA	Nanaimo
Howard Larsen 250/726-6892 larsenh@pac.dfo-mpo.gc.ca	Port Alberni HA	Port Alberni
Marion Lightly 250/756-7392 lightlym@pac.dfo-mpo.gc.ca	Nanaimo HA	Nanaimo
Randy Stennes 250/726-2401 stennesr@pac.dfo-mpo.gc.ca	Port Alberni HFO	South Coast
Brigid Reynolds 250/390-6510 breynolds@rdn.bc.ca	Lantzville HS	Regional District of Nanaimo
Tony Dorling 250/753-0288 tdorling@x-mail.net	Nanaimo SC	K'op thut Society
Phil Edgell 250/724-6244 pedgell@island.net	Port Alberni SC	Regional Aquatic Management Society
Arlene Suski 250/726-2303 asuski@lbmf.bc.ca	Ucluelet SC	Regional Aquatic Management Society

### Major Enhancement Facilities

<i>Nitinat River Hatchery</i> P.O. Box 369, Port Alberni, B.C. V9Y 7M8 Tel: 250/745-3321 Fax: 250/745-3416	First year: 1980 Location: West Coast of Vancouver Island Species: Coho, chinook, chum	<i>Robertson Creek Hatchery</i> Box 1100 Port Alberni, B.C. V9Y 7L9 Tel: 250/724-6521 Fax: 250/724-6603	First year: 1972 Location: Port Alberni Species: Coho, chinook, steelhead
--	--	---	---

# Tom Rutherford

## Lower Vancouver Island, including the southern gulf islands and Cowichan River watershed.



These continue to be exciting and challenging times for those involved with fisheries and stewardship activities and South Vancouver Island Community Involvement volunteers and contractors have taken these challenges in stride. The level of technical expertise and degree of dedication demonstrated by community-driven projects in the area has reached new levels of excellence in the fields of habitat restoration, stock enhancement, education and awareness programming and all facets of stock and habitat assessment. By continuing to display the ability and motivation to play a leadership role in the stewardship of our watersheds and the life they support, south island residents give good cause for

optimism as we move into the new millennium.

### Community Projects

#### *Bilston Watershed Habitat Protection Association*

Ian McKenzie 250/478-2387  
or Kym Hill 250/474-7062

This dynamic group has increased public awareness about the Bilston watershed while enhancing streams within it. They organize school outings on the system to view restoration projects, produced a brochure, and encourage the public to become "Bilston Buddies." They celebrate Rivers Day with a Bilston Watershed Picnic.

First year: 1986

Activity: Streamkeepers,  
Education, enhancement

Location: Martin Brook, Bilston,  
Metchosin, Pritchard &  
Cole creeks

Species: cutthroat

Persons: 30

#### *CERCA (Coastal Environmental Restoration Co-operative Association)*

Jim McIssac 250/744-2727  
1730 Albert Ave.

Victoria, B.C. V8R 1Z1

This fisher's co-operative is dedicated to the restoration of salmonid habitat in southern Vancouver Island. They are involved in habitat complexing projects and stock assessment initiatives in the Greater Victoria area.

First year: 1997

Activity: Streamkeepers,  
Habitat restoration,  
inventory and assess  
ment

Location: South Vancouver Island  
Persons: 20

#### *Courtland Hastings Agricultural Preservation Society (CHAPS)*

Sonja Nienaber 250/727-0812  
1435 Courtland Ave., RR #3  
Victoria, B.C. V8X 3X1

The group's main goal is to promote and enhance agriculture and agricultural viability in the Courtland Hastings area. They encourage and enhance fish and wildlife habitat through sound management practices, have done water quality testing, riparian planting, and fish assessment on Durell Creek.

First year: 1998

Persons: 12

#### *Cowichan Fly Fishers*

Wayne Pealo 250/743-4569  
2400 Ravenhill  
Cobble Hill, B.C.

This enthusiastic group has provided a real boost to the Shawnigan Volunteer Coho program. They are active in the areas of construction, adult coho capture and transport, and fostering community awareness.

First Year: 2000

Activity: Capture and transport of  
adult coho,  
Community awareness

Locaton: Shawnigan Creek

Persons: 20  
Species: Coho

#### *Colquitz River Watershed Stewardship Project*

Mr. L. Ross 250/479-4014  
Strawberry Vale School

1351 Hastings Street  
Saanich, B.C. V8Z 2W4

An education/stewardship project involving several schools and thousands of students in the Colquitz watershed. Annual events include watershed festivals, a headwaters-to-estuary field study, and other outdoor learning opportunities for Saanich students

First year: 1994  
Activity: Streamkeepers, education  
and awareness

Location: Colquitz Creek  
Persons: 600 students + teachers

#### *Cowichan Tribes: Cowichan River Hatchery*

Doug Millerd 250/746-5741  
5760 Allenby Road,  
Duncan, B.C. V9L 5J1

A large scale production facility including a groundwater hatchery, sea pens, and significant fry salvage and assessment programs

First year: 1977  
Activity: Hatchery & sea pens,  
Fry salvage, assessment

Location: Cowichan River  
Persons: 6 plus seasonal  
Species: Chinook, coho

*Cowichan Watershed Council*  
David Groves 250/746-1004  
c/o Community Fax:746-8819  
Futures Development Centre  
750B Jubilee St.

Duncan, B.C. V9L 1X8

The Cowichan Watershed Council is a grass roots, community-based group with a common purpose: "To ensure the health of the Cowichan watershed from source to sea." The group is active in watershed planning processes.

First year: 1995

Activity: Streamkeepers,  
Watershed Planning and  
stewardship activities

Location: Cowichan watershed

#### *Esquimalt Anglers*

J.K. Saunders 250/384-9484  
1101 Munroe Ave.  
Victoria, B.C. V9A 5P1

This group operates a salt water grow-out site for chinook smolts raised at the Howard English Hatchery and also gives support to the operation of the Craigflower Creek smolt fence and other volunteer initiatives in the area on an as-needed basis.

First year: 1992

Activity: Net pen rearing  
Location: Esquimalt Harbour

Persons: 25

Species: Chinook (seapen smolts)

#### *Friends of Bowker Creek*

Ian Graeme 250/370-1271  
2615 Dean Ave.  
Victoria, B.C.

Members are dedicated to raising awareness of the creek to encourage community spirit within the neighborhood, create a sense of ownership, and provide a focus for community action on the environment. Although the creek no longer supports a salmon run, the society attempts to educate the public about the other wildlife values of creek habitat and promotes the creek as a transportation and recreation corridor.  
 First year: 1996  
 Activity: Streamkeepers, habitat, Education  
 Location: Bowker Creek  
 Persons: 20

*Friends of Mount Douglas Park Society*

Bob Bridgeman 250/477-7464  
 1381 El Nido  
 Victoria, B.C.  
 This group is involved in data collection and stream stewardship on Douglas Creek, an urban stream in Mount Douglas Park. They educate the public in the watershed about the local creek through yearly stream clean-ups, storm-drain marking and park signage. The group is also working on habitat restoration, hydrological surveys, invertebrate studies and a coho introduction and monitoring program.  
 First year: 1996  
 Activity: Streamkeepers, Fish releases  
 Location: Douglas Creek  
 Persons: 200  
 Species: Coho

*Goldstream Volunteer Salmonid Enhancement Association*

Peter McCully 250/474-6698  
 PO Box 6494, Depot 1,  
 Victoria, B.C. V8P 5M4  
 One of the largest volunteer hatcheries on the coast. GVSEA also operates a counting fence, carries out adult and juvenile assessment programs, and is very involved in public education initiatives.  
 First year: 1978  
 Activity: Hatchery,

Habitat improvement,  
 Education support  
 Location: Goldstream River  
 Persons: 40  
 Species: Chinook, coho, chum

*Hagan Creek KENNES Watershed Project*

Misty MacDuffy 250/363-6837  
 PO Box 176 Fax: 363-6746  
 Saanichton, B.C. V8M 2C3  
 The project's goal: restore and protect the health of Hagan Creek and sustain the ecological and social systems of its watershed. The group is identifying and remedying the impacts land use activities have on the creek and, ultimately, the Saanich Inlet. KENNES (Kwa-nus), "place of whales," the Saanich Peoples' name for Hagan Bight, reflects on a quality of marine habitat that has been seriously degraded. The success of this watershed initiative is tied to private stewardship and local involvement. Thirty people are involved in a well monitoring component; 100s volunteer for various aspects of the project.  
 First year: 1997  
 Activity: Streamkeepers, water quality monitoring, Education & awareness, Habitat restoration  
 Location: Hagan Creek  
 Persons: 30  
 Species: Cutthroat

*Haig-Brown Fly-Fishing Association*

Brian Tucker 250/479-5106  
 PO Box 6454, Depot #1,  
 3410, Shelbourne St.,  
 Victoria, B.C. V8P 5M4  
 This organization is involved in habitat restoration and public education initiatives.  
 First year: 1989  
 Activity: Habitat improvement  
 Location: Sandhill, Bilston creeks  
 Persons: 10

*Island Stream & Enhancement Society*

Kathy Riemer 250/537-9630  
 PO Box 3301, Ganges PO,  
 Saltspring Island, B.C. V8K 2V9

The Saltspring volunteers operate a small hatchery and complete several habitat restoration projects each year: riparian planting, habitat complexing, water storage, fish passage structures, and are active in public education and awareness.

First year: 1984  
 Activity: Hatchery, habitat restoration, education and awareness, Public information  
 Location: Saltspring Island streams  
 Persons: 30  
 Species: Coho, chum

*Lake Cowichan Salmonid Enhancement Society*

Art Watson 250/749-0119  
 General Delivery  
 Lake Cowichan, B.C. V0R 2G0  
 The Lake Cowichan volunteers carry out a variety of activities including operation of a small hatchery, fry salvage, habitat restoration, stock assessment (including rotary screw and lake traps), and an innovative public awareness program.  
 First year: 1982  
 Activity: Hatchery, fry salvage, Juvenile assessment, Habitat restoration  
 Location: Lake Cowichan  
 Persons: 30  
 Species: Coho

*Lester B. Pearson College*

Sylvia Roach 250/478-5591  
 RR 1,  
 Victoria, B.C. V8X 3W9  
 This educational program for international students includes a wide variety of stream stewardship activities and operates a small incubation box. Its goal; to re-establish a chum population in Stony Creek. Activities also include an innovative public awareness program.  
 First year: 1985  
 Activity: Incubation box, Education, Streamkeepers  
 Location: Metchosin  
 Species: Chum

*Maxwell Baba'I Streamkeepers*

Laura Veary 250/743-7144  
 Maxwell International  
 Baha'i School  
 2371 Shawnigan Lake Rd.  
 Shawnigan Lake, B.C. V0Z 2W0  
 This is a new Streamkeepers group that is focusing on two small unnamed streams that flow westward into Shawnigan Lake. Activities to date include water quality and quantity sampling and stream mapping  
 First year: 2000  
 Activity: Streamkeepers, Stewardship  
 Location: Shawnigan Lake  
 Persons: 8

*Mill Bay and District Conservation Society*

Dave Nelson 250/743-7304  
 PO Box 2,  
 Cobble Hill, B.C. V0R 1L0  
 Volunteers have established a healthy coho run in Shawnigan Creek. Every year they transport spawners above a barrier falls in the estuary, trapping fish and using a tramway to move them up the cliff to transport trucks.  
 First year: 1979  
 Activity: Adult transport, Education & awareness  
 Location: Shawnigan Creek  
 Persons: 10  
 Species: Coho

*Portage Inlet Salmonid Society*

Jack Stidston 250/385-4205  
 935 Inskip Street  
 Victoria, B.C. V9A 4J6  
 Operation of adult and juvenile counting fences on Craigflower Creek. Construction assistance to Goldstream Volunteer Enhancement Society. Headwater lake stocking program on Craigflower Creek.  
 First year: 1986  
 Activity: Brood capture, support to other PIP groups  
 Location: Craigflower Creek  
 Persons: 4  
 Species: Coho

*San Juan Enhancement Society*  
Mr. & Mrs. Tremblay 250/647-5568  
4 Queetso Drive  
Port Renfrew, B.C. V0S 1K0

A production hatchery in an isolated location, this facility generates its own power with a water turbine. Staff also carries out assessment duties under DFO Stock Assessment Division contract and has been involved in habitat restoration activities.

First year: 1978

Activity: Hatchery, net pens,  
Stock assessment

Location: San Juan watershed

Persons: 2 plus seasonal

Species: Chinook, coho

*Saturna Island Group*

Rick Jones 250/539-2641  
PO Box 14

Saturna Island, B.C. V0N 2Y0

The Saturna volunteers operate an onstream incubation and rearing facility with the goal of re-establishing a chum run in Lyall Creek. The first chum returned to Lyall in 1997.

First year: 1992

Activity: Incubation box,  
Stream habitat

Location: Lyall Creek

Persons: 5

Species: Chum

*Shawnigan Lake School*

Scott Noble 250/743-5516  
1975 Renfrew Road,

Shawnigan Lake, B.C. V0R 2W0

Students operate a recirculating hatchery and take part in assessment and Streamkeeping activities.

First year: 1980

Activity: Hatchery, assessment,  
Education,  
Streamkeepers

Location: Shawnigan Creek

Persons: 70

Species: Chum

*Sidney Anglers*

Tom Davis 250/474-1603  
1209 Kangaroo Road,

Victoria B.C. V9C 4C6

Volunteers have successfully re-

established a wild run of coho in Reay Creek, continue to monitor stock strength and restore habitat along this important urban stream.  
First year: 1982

Activity: Habitat restoration,  
Wild production

Location: Reay Creek

Persons: 10

Species: Coho

*Society for the Protection of Ayum Creek*

Gwenn Griff 250/642-6474  
P.O. Box 1282 Fax: 642-6812

Sooke, B.C. V0S 1N0

This society is dedicated to restoration of the Ayum salmon run through protection of the creek in perpetuity. Volunteers trained through the Streamkeepers program engage in water quality monitoring, habitat restoration, invertebrate sampling, watershed mapping, stream clean-ups, spawner enumeration, etc. The group, along with the Habitat Acquisition Trust and other community partners, has purchased land surrounding the creek estuary and is working toward other land acquisitions in the watershed to create a park and protect the creek.

First year: 1996

Activity: Habitat, fund raising

Location: Ayum Creek

Persons: 40

Species: Coho, cutthroat, chum,  
steelhead

*Somenos Marsh Wildlife Society*

Val Wilson 250/748-8718  
Koksilah Road

Duncan, B.C.

This conservation group is involved with habitat restoration, water quality sampling, and public awareness program on creeks flowing into Somenos Marsh. They are also involved in a process hoping to have the entire marsh designated as a wildlife refuge.

First year: 1988

Activity: Restoration, water  
quality sampling,

Stewardship activities

Location: Avril, Bing, Richards  
creeks

Persons: 20

Species: Coho, cutthroat

*Sooke Salmon Enhancement Society*

Glen Varney, 250/642-5490  
Box 947

Sooke, B.C. V0S 1N0

The society operates a hatchery and is involved in watershed planning, stock assessment, hydrological studies, and habitat restoration in the Sooke Watershed.

First year: 1978

Activity: Hatchery, stock  
assessment,  
Habitat restoration

Location: Sooke River, deMamiel  
Creek

Persons: 78

Species: Chinook, coho

*Tatlow Creek Streamkeepers*

Chelsea Garside 250/655-3208  
11185 W. Saanich Rd.

Sidney, B.C. V8L 5P3

This Streamkeepers group has "adopted" Tatlow creek, a small stream in the Deep Cove area. Activities to date have included a landowner contact program, literature search, stream mapping, and water quality and quantity sampling. The group has aspiratons to become involved in habitat restoration activities and work towards re-establishment of salmonid populations.

First year: 2000

Activity: Watershed stewardship

Location: Tatlow Creek

Persons: 6

*Tony Brown*

Telephone: 250/746-5081  
6405 Genoa Bay Road, RR1,

Duncan, B.C. V9L 1M3

Tony, a classroom incubation pioneer, operates a large in-school incubator that takes the school district's eggs to eyed stage prior to distribution to individual schools. Several thousand eggs are kept and released as fry into nearby

Shawnigan Creek.

First year: 1981

Activity: Classroom incubation,  
Education

Location: Shawnigan Creek

Persons: 25

Species: Coho

*Vancouver Island Watership Foundation*

Don Lowen 250/388-4756

3731 Winston Crescent

Victoria, B.C. V8X 1S2

This group supports more than 210 schools on Vancouver Island and has been very successful in education program co-ordination, fund raising, and heightening awareness of the fisheries resource.  
First year: 1992

Activity: Classroom incubation,  
Education & awareness,  
Storm drain marking

Location: South Vancouver Island  
Persons: 5

*Veins of Life Society*

John Roe Tel/fax: 250/383-2086  
RPO Box 44107, Tillicum Mall

Victoria, B.C. V9A 7K1

This enthusiastic organization has been focusing on the salt water/estuarine habitat of "The Gorge" and the watersheds that drain into it. They sponsor several education and awareness initiatives annually, are involved in restoration activities, and have created the "Adopt an Outfall" program  
First year: 1996

Activity: Habitat restoration,  
Education & awareness

Location: Gorge waterway and  
associated watersheds

Persons: 25

*Wsikem-TenTen Stewardship Project*

Ian Bruce 250/363-6596  
PO Box 6000

9860 W. Saanich Rd.

Sidney, B.C. V8L 4B2

This stewardship group involves partnerships with Saanich First nations, local property owners, the agricultural community, Victoria International Airport and the Insitute of Ocean Science.

Activities have included habitat complexing, riparian planting, wetland construction, stream mapping and watershed planning  
 First year: 1997  
 Activity: Stream stewardship  
 Location: Wsikem, TenTen creeks  
 Persons 5

## Education

Education coordinator:  
 Don Lowen 250/388-4756  
 More than 130 schools participate in Fisheries and Oceans educational programming on South Vancouver Island. Activities include classroom incubation, adult dissections, *Gently Down the Stream* field trips to local streams, rivers, and hatcheries, storm drain

marking programs and curriculum in-services for area teachers. Through educational programming thousands of South Island students each year are provided with hands-on learning experiences that demonstrate the fragility and importance of our watersheds and the fisheries resources they support.

## Related Fisheries Contacts

### Habitat Conservation and Stewardship Program

Linnaea Chapman	250/746-6221	chapmanl@dfo-mpo.gc.ca	Port Alberni	HA	Port Alberni
Cheri Ayers	250/748-3196	cayers@island.net;	Duncan	HS	Cowichan Tribes
Craig Mount	250/360-3108	cmount@crd.bc.ca	Victoria	HS	Capital Regional District
Jennifer Sutherst	250/386-5110	jsutherst@telus.net	Victoria	SC	South Islands Aquatic Stewardship Society
Dave Tattam	250/746-1213	David.Tattam@gems2.gov.bc.ca	Duncan	HS	Cowichan Agricultural Society
Bob Truelson	250/383-2086	volws4@home.com	Victoria	SC	Veins of Life Watershed Society

### Major Enhancement Facilities

#### Nitinat River Hatchery

P.O. Box 369  
 Port Alberni, B.C. V9Y 7M8  
 Tel: 250/745-3321  
 Fax: 250/745-3416  
 First Year: 1980  
 Location: Nitinat Lake  
 Species: Coho, chum, chinook



Education is as important as fish culture at many community-operated hatcheries. Here, a group of elementary students learn about salmon that return to spawn at the Sliammon Band's Community Economic Development project in Powell River, B.C.

# Grant McBain

## Sunshine Coast and Howe Sound, Port Mellon to Desolation Sound



The Sunshine Coast continues to offer numerous terminal sport fishing opportunities for coho and chinook. Volunteer groups are developing long-term habitat projects to restore and enhance local wild stocks of salmonids. The addition of new HCSP staff has increased Fisheries and Oceans' capacity to respond to volunteer groups and local governments.

### Community Projects

*Canadian Forest Products Ltd.*  
(Mainland Division)

Jason Foote 604/884-5264  
Box 110

Port Mellon, B.C. V0N 2S0

The chum spawning channel in the McNab Creek flood plain produces large numbers of chum fry and provides rearing for coho and cutthroat. Channel length was expanded in 1998 from 230 metres to 720 metres. There are further opportunities to expand the channel in the future. The channel provides additional off-channel habitat and spawning for coho and cutthroat.

First year: 1982

Activity: Spawning channel

Location: McNab Creek, Howe Snd.

Persons: 5

*Desolation Sound Salmonid Enhancement Society*

Rob Smeal 604/203-1578

General Delivery

Refuge Cove B.C.

The Society is restoring the coho salmon run into Refuge Lagoon. An old steel dam was replaced with a fish passable rock dam. Sakinaw lake coho eggs are being provided for a smolt release program into Refuge Lagoon. Instream work is being done to improve spawning areas in tributary streams around the lagoon.

First year: 2000

Activity: Habitat restoration

Location: Refuge Cove, Desolation Sound

Persons: 10

*Gambier Island StreamKeepers*

Lois Kennedy Payne 604/886-4887  
RR #3

Gambier Island C30

Gambier Island, B.C. V0N 1V0

Local volunteers are mapping the streams on the island for use with the Official Community Plan, promoting community and landowner awareness of streams, and organizing stream restoration projects. Restoration and enhancement activities have been carried out on Mannion, Greenion, MacDonald, Whipsering, and Long Bay creeks using FsRBC funding and DFO technical support.

First year: 1996

Activity: StreamKeepers  
Habitat, education

Location: Gambier Island

Persons: 12

*Pender Harbour & District Wildlife Society*

Billy Griffith 604/883-2434

General Delivery

Egmont B.C. V0N 1N0

The society is actively involved in the enhancement of local Pender Harbor area creeks and Sakinaw Lake. The society is now expanding its focus to include the creation of off-channel habitat and instream restoration as well as operating a hatchery for chum and coho.

First year: 1981

Activity: Hatchery, habitat

Location: Pender Harbour

Persons: 12

Species: Coho, chum

*Powell River Salmon Society (CEDP)*

Phil Jantz 604/485-7612

7050 Alberni Street

Powell River, B.C. V8A 2C3

The Powell River Salmon Society operates an adult counting fence, broodstock collection facility, hatchery and spawning channel on Lang creek and a second hatchery in the Pacifica Paper Mill at Powell River. The society enhances Lang Creek stocks and provides chum eggs for local creeks enhanced by volunteers groups. This facility has become well known in the community as the place to watch returning salmon each fall.

The Society also provides chinook eggs to Sliammon, Sechelt and the Sunshine Coast Salmon Society.

First year: 1982

Activity: Hatchery,  
Spawning channel

Location: Lang Creek, Powell River

Staff: 3.5

Species: Chinook, coho, chum,  
pink

*Sargeant Bay Society*

Joop Burgerjon 604/885-9308

P.O. Box 1486

Sechelt, B.C. V0N 3A0

The Society maintains a fish ladder allowing access to Colvin Creek and enumerates coho spawners. Coho and cutthroat numbers continue to rebuild with the expanded habitat

resulting from the creation of a small lake above the intertidal area in the Provincial Park.

First year: 1993

Activity: Habitat, education

Location: Sargeant's Bay, Sechelt

Persons: 12

*Sechelt Project (CEDP)*

Sid Quinn 604/885-2273

Sechelt Indian Band

Box 740

Sechelt, B.C. V0N 3A0

The Sechelt Band operates the Mclean Bay hatchery which provides a highly successful terminal chinook and coho sport fishery in the protected waters of Sechelt Inlet. The band also enhances chum and pink salmon for local Porpoise Bay area creeks. The hatchery staff operate a fixed trap net in McLean bay to collect broodstock.

First year: 1980

Activity: Hatchery

Location: Porpoise Bay, Sechelt Inlet

Staff: 1.5

Species: Chinook, coho, chum,  
pink

*Sechelt Creek Contracting*

Ken Sneddon

Box 2450

Sechelt, B.C. V0N 3A0

Ken Sneddon is sponsoring a major stream restoration project involving North and South Twin creeks. The lower 250 meters of the two streams are being reconnected into a common channel after being

diverted in the 1950s. The project is based on the nearby Ouilet creek restoration project. Junior Forest Wardens also operate a camp adjacent to the new stream channel and will be involved in the long term recovery.

First year: 1999

Activity: Habitat and education

Location: Howe Sound, Gibsons

Persons: 6

Species: Coho, chum, cutthroat

#### *Sliammon Project (CEDP)*

Floyd George 604/483-4111

Sliammon Indian Band

R.R. 1, Sliammon Road

Powell River, B.C. V8A 4Z3

The Sliammon Band hatchery produces chinook, coho, chum and pink salmon for the Sliammon River. A coded-wire tagging program provides key information on coho and chum distribution and harvest rates in the sport and commercial fishery in Johnstone Straits.

First year: 1979

Activity: Hatchery

Location: Sliammon River, Powell River

Staff: 3

Species: Chinook, coho, chum, pink

#### *Sunshine Coast Salmonid*

##### *Enhancement Society*

Bob Amstead 604/885-4136

4381 Parkway Dr.

Sechelt, B.C. V0N 3A1

The society operates the largest hatchery on the Sunshine Coast and enhances coho and chinook stocks for terminal fisheries in Chapman Creek, Halfmoon Bay and Porpoise Bay. It also operates an education program in its new education center and enhances chum and coho for stock rebuilding in Roberts and Chaster creeks.

First year: 1990

Activity: Hatchery

Persons: 50

Location: Sechelt

Species: Chinook, coho, chum, pink

#### *Spawn to be Wild*

Gertrude Pacific 604/885-3797

RR #3

Sandy Hook C128

Sechelt, B.C. V0N 3A0

The volunteers are involved in stream restoration, public education and conservation in the East Porpoise Bay area. The group has carried out instream restoration in Davis Brook as well as spear-heading efforts to maintain local area creeks threatened by urban development.

First year: 1997

Activity: Streamkeepers, Habitat, education

Location: Sechelt

Persons: 12

#### *Terminal Forest Products*

Rob Lidden 604/886-7033

Box 1188

Gibsons, B.C. V0N 1V0

Terminal Forest Products supports the ongoing restoration and research in Ouilet Creek. Additional over-wintering ponds were constructed this past summer. New habitat projects have been developed in the estuary to increase rearing areas for outmigrating smolts. The site also provides incubation and rearing for chum fry outplants for nearby Langdale and Twin creeks

First year: 1982

Activity: Habitat, hatchery

Location: Ouilet Creek, Gibson's

Persons: 6

Species: Chum

#### *Texada Island Creeks*

Bob Hagman 604/483-3231

5776 Marine Ave.,

Powell River, B.C. V8A 2M4

Volunteers are monitoring coho and chum returns in Moaut, Gillies Bay and Raven creeks as well as rearing 100,000 chum fry from Lang Creek at Moaut Creek prior to release to assist in the run rebuilding.

First year: 1992

Activity: Habitat, hatchery

Persons: 12

Species: Chum

#### *Powell River CUPE Local 798*

Shawn Guellette 604/414-0160

6274 Walnut St.

Powell River, B.C. V8A 2C3

The local members of the Town of Powell River municipal staff are working on the restoration and preservation of Willingdon, McGuffie and McFalls creeks. The lower section of McFall and McGuffie creeks have been restored with a series of instream shot rock wiers and the stream banks are being revegetated with native plants. In addition, the volunteers are operating netpens at the creek mouth to rear and imprint chum fry from Lang Creek to rebuild the chum run.

First year: 1997

Activity: Habitat, education

Location: Powell River

Persons: 25

Species: Chum

### **Education:**

Schools in the Sunshine Coast and Powell River school districts operate numerous classroom incubation projects each year. Each involves about 30 persons and fry are released to local creeks. Local high schools are now involved with Stream Team programs on local creeks.

## **Related Fisheries Contacts**

### **Habitat Conservation and Stewardship Program**

Dave Nanson

604/883-0454

nanson@pac.dfo-mpo.gc.ca

Madeira Park

HA

Sechelt

Cheryl Trent

604/886-7705

ctrent@dccnet.com

Gibsons

SCRD

Sunshine Coast Regional District

Sheane Reid

604/740-0363

ravensystems@dccnet.com

Halfmoon Bay

SC

CFDC - Sunshine Coast

# Rob Bell-Irving

## West Vancouver and Howe Sound



My area is very diverse, ranging from the rural D'Arcy-Pemberton Valley area to the very urban West Vancouver community. In addition to the core Public Involvement programs, all my area's ecologically-based groups participate in the Streamkeepers Program, as well as local water and land-use planning issues, habitat restoration, habitat mapping, salmonid assessments, community awareness, youth education and activities, fund-raising, and habitat protection. We enjoy excellent cooperation from Tenderfoot and Capilano hatcheries and we welcome the positive infusion of new people and energy in Squamish, which now has its first community-based Streamkeeper organization.

### Community Projects

#### *Bowen Island Fish & Wildlife Club*

Albert & Bonita Schaly  
RR #1 - AL 36, 604/947-0309  
Bowen Island, B.C. V0N 1G0  
This Project is leading to the implementation of Community Stewardship and Greenways concepts into local Government planning, as well as the formation of Bowen Island Water and Land Use Watershed Planning and Environmental Review Boards. It also serves as a model for other similar community-based Salmon Center/Hatchery concepts to emulate.

First year: 1984  
Activity: Fish ladders, hatchery, Habitat improvement, Public awareness, Education  
Location: Terminal, Davies creeks  
Persons: 20  
Species: Coho, chum

#### *Dryden Creek*

Mel Drage 604/898-5390  
Box 1318  
Garibaldi Highlands, B.C. V0N 1T0  
After not being in use for a few years, this very productive site will be re-opening in 2001 with the assistance of the new Squamish Streamkeepers Organization.  
First year: 1987  
Activity: Hatchery, habitat improvement  
Location: Squamish River  
Persons: 4  
Species: Coho

#### *Furry Creek Streamkeepers*

Dave Rittberg 604/896-2212

#### *North Vancouver Outdoor School*

Jim Wisnia 604/898-5422  
Box 250  
Brackendale, B.C. V0N 1H0  
This Project continues to set the standards in salmon-based ecosystem education, particularly at the elementary school level. It hopes to add a fluvarium in 2001, to better highlight the entire interconnected stream ecosystem.  
First year: 1981  
Activity: Hatchery, education, Spawning channel  
Location: Cheakamus River  
Persons: 4,500  
Species: Coho, chum

#### *Pemberton Sportsmen's Wildlife Association*

Hugh Naylor 604/894-6402  
Box 221  
Pemberton, B.C. V0N 2L0  
The PSWA continues to keep the unique Birkenhead chinook stock a vital stock, as well as performing numerous coho stream stock outplanting through various satelliting programs and providing valuable cooperative projects with the local agricultural community.  
First year: 1985  
Activity: Hatchery, Habitat improvement, Assessment, education  
Location: Birkenhead, Upper Lillooet rivers  
Persons: 20  
Species: Coho, chinook

#### *Sewell's Landing Marina*

Megan Sewell 604/921-3474  
6695 Nelson Avenue  
West Vancouver, B.C. V7W 2B2  
Sewell's has always been one of B.C.'s most historically and traditionally renowned salmon resource landmarks. They continue to do an excellent job of rearing high quality coho salmon, during the smolt life-stage, at their annual seapen program.  
First year: 1984  
Activity: Sea pen rearing  
Location: Horseshoe Bay, Howe Sound  
Persons: 10  
Species: Coho, chinook

#### *Squamish River Watershed Society*

Edith Tobe 604/898-9171  
Box 1318  
Garibaldi Highlands, B.C. V0N 1T0  
First year: 1998  
Activities: Coordination, training, Habitat and biological inventory, assessment, Monitoring, habitat restoration, Public awareness, Education  
Location: Squamish River  
Persons: 20

#### *Squamish Streamkeepers*

Wendy Mitchell 604/815-0109  
The Squamish Streamkeepers is a new group, which compliments the longstanding work of the Squamish River Watershed Society. Already, the Streamkeepers have performed numerous adult salmon migration

barrier removals, provided excellent public education, conducted salmon surveys, and assisted Bowen Island with their "Howe Sound Neighbour's" coho egg-takes at Tenderfoot Hatchery. They have assisted the SRWS in their devoted efforts to restore Squamish salmon runs and protect salmon habitats.  
First year: 2000 (Streamkeepers)  
Activities: Streamkeepers, spawner assessments, mapping, Streamkeeper training  
Location: Squamish  
Persons: 25

#### *Steelhead Society of B.C.*

Carl Wilson 604/892-5776  
Box 5688  
Squamish, B.C. V0N 3G0  
First year: 1993  
Activities: Habitat restoration, Assessment  
Location: Squamish River  
Persons: 20

#### *West Vancouver Streamkeepers*

Paul Berlinguette 604/872-1644  
1658 East 20th,  
Vancouver, B.C. V5N 2K8  
Continues to champion salmon and salmon habitat causes in a very difficult urban environment. The WVS is making huge strides in assisting the West Vancouver municipal government in developing stronger Stream Stewardship and Greenways principles into their local government planning initiatives. They also operate the Nelson Creek

hatchery (contact: Elizabeth Hardy, 604/925-0546).

First year: 1995

Activity: Habitat inventory & improvement, Hatchery

Location: West Vancouver streams

Persons: 20 volunteers

Species: Coho, chum

## Education

There are 20 schools in my area (D'Arcy to West Vancouver), all of which use *Salmonids in the Classroom*, classroom incubation and other activities. I also have three high schools participating in salmonid assessments, egg-takes,

and juvenile salmonid fry outplanting programs. This spring, schools in Squamish, Pemberton, and Mt. Currie will be engaging in Storm Drain Marking. The Bowen Island School has also made contact with the new Oceans school programs.

## Related Fisheries Contacts

### Habitat Conservation and Stewardship Program

Mike Engelsjord 604/892-2040 engelsjordm@pac.dfo-mpo.gc.ca

Liz Jones 604/894-6145 ljones@direct.ca

Edith Tobe 604/898-9171 ebtobe@mountain-internet

Squamish HA

Mount Currie SC

Garibaldi Highlands SC

Squamish

Squamish River Watershed

Squamish River Watershed

Society

## Major Enhancement Facilities

### Tenderfoot Hatchery

Box 477,

Brackendale, B.C. V0N 1H0

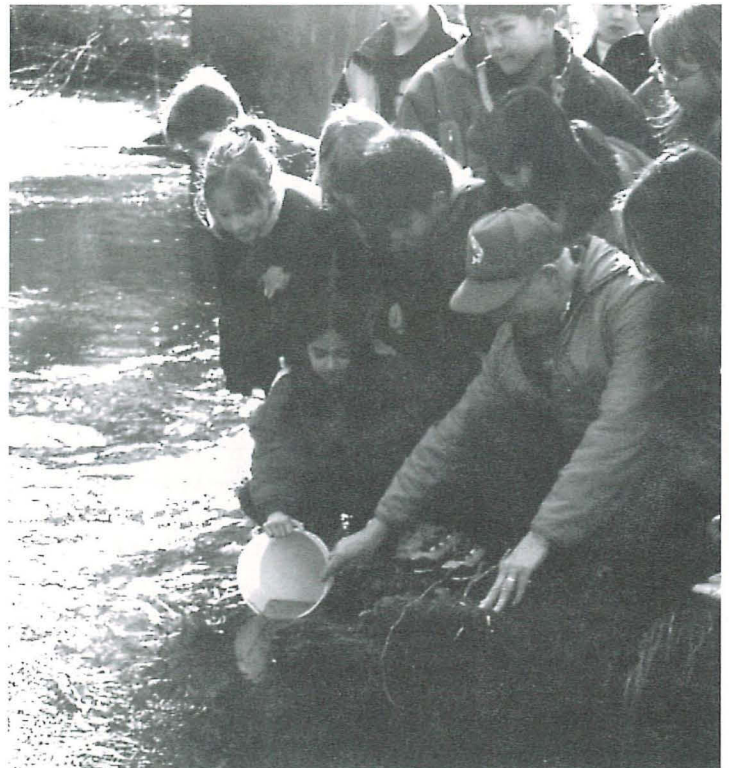
Tel: 604/898-3657

Fax: 604/898-5692

First year: 1981

Location: North of Squamish

Species: Chinook, coho, pink (in odd-numbered years)



Many community projects host school classes in the spring. Hopeful children give a send off to the fish they raised with great care in their classrooms and hope they will make it back to the creek one day. They also learn something about the kind of environment those young fish will need to survive and mature. This fish release was held on the banks of Surrey's Little Campbell River.

# Sandie Hollick-Kenyon

## Burrard Inlet, Indian Arm, Vancouver



The Burrard Inlet, Indian Arm, Vancouver area is small in comparison with other community advisor areas but it is full of diverse projects and dedicated volunteers. Projects include Streamkeepers, enhancement, habitat restoration, education, and watershed/stewardship planning. Rapid urban development is of great concern for groups trying to protect the watersheds that support their creeks. Some groups focus on restoration in the many small coastal streams in this area, others focus on maintaining and enhancing their existing watersheds. Enriching local streams with fry and providing smolts for release into Burrard Inlet are the goals of others. School groups are very active in this area where classroom incubators are in much demand. Fry are released to local streams in the spring, often

in combination with Streamkeeper and streamside learning activities. Wherever their interests are, the level of enthusiasm and commitment among volunteers is very high. Thanks so much to all the dedicated volunteers, teachers, students and federal, provincial and municipal staff who make these contributions to the resource possible.

### Community Projects

#### *Bedwell Bay Barnacle Club*

Gary Bradley 604/937-3702  
3530 Marine Ave.

Belcarra, B.C. V3H 4R8

The seapen site located in Bedwell Bay, a small bay of Indian Arm, has been in operation since 1991.

Community members combine efforts in the spring to rear chinook and coho in seapens before release to the ocean. In addition, a small number of coho fry are released to Windemere Creek in the fall.

First year: 1991

Activity: Seapen rearing

Location: Bedwell Bay

Persons: 8

Species: Chinook, coho

#### *Belcarra Beachkeepers*

Jo Ledingham 604/939-0047  
<Ledingham@moody.bc.ca>

Lynn Castagner 604/520-6442  
<Lynn.castagner@gvrd.bc.ca>

9146 Avalon Ave,  
Burnaby, B.C. V3N 4G8

This group has been involved in education and Beachkeeper activities for more than four years. Working in cooperation with a GVRD coordinator, volunteers (surrounding high school students and local residents) are trained and then spend time on the beach educating members of the public about beach etiquette (leave it as

you found it) and marine harvesting regulations. A family interpretative event also took place on the beach this summer and a similar one is in the works for 2001. A new initiative for the group is the development of a crab ruler that can be made available to the public in the area to raise the level of awareness regarding the taking of undersized crabs.

First year: 1998

Activity: Education,  
Public awareness

Location: Belcarra Beach

Persons: 24

#### *Buntzen Bay Residents*

Keith Major 604/469-0512  
1204 Caledonia

North Vancouver, B.C. V7G 2A6

The Buntzen Bay Residents group, formed in 1981, carries on a variety of activities on a year-round basis.

The main emphasis is in the spring when chinook are incubated and reared in fresh and salt water. A small number of coho are over-wintered in a system of small ponds that allows for natural out-migration in the spring.

First year: 1981

Activity: Hatchery, seapen rearing

Location: Richards Creek

Persons: 5

Species: Chinook, coho

#### *Burnaby Fish and Game Club*

Herb Karras 604/435-7572  
PO Box 570

141-6200 McKay Ave.,  
Burnaby, B.C. V5H 4M9

The Burnaby Fish and Game Salmon Enhancement Program has been in existence since 1990.

Due to unfortunate circumstances their facility was dismantled, putting an abrupt end to their chinook rearing program. The group has kept involved by participating with the seapen program each spring. The members are keen on becoming more involved and are looking for potential rearing sites to set down roots again.

First year: 1990

Activity: Seapen rearing

Location: Burrard Inlet

Persons: 20

#### *Burrard Inlet Marine*

*Enhancement Society (BIMES)*  
*Centennial High School*

Orland Lee 604/461-0975  
300 Ioco Rd.,

Port Moody, B.C. V3H 2V7

Jointly operated by BIMES and the Centennial School Salmon Project Club, the Mossom Creek Hatchery developed from a school salmon enhancement club 25 years ago. Teachers Rod MacVicar and Ruth Foster initiated the club which began egg transplants to restock the "fished out" creek. The hatchery

has grown from a few gravel upwelling boxes to a modern hatchery and teaching facility. Mossom also produces fry to stock neighbouring creeks and rears chinook fry for Burrard Inlet seapen sites at Ioco and Trans Mountain. The hatchery benefits from strong alumni and community support. It is a field site for a flagship high school science program that has been a recipient of many awards including the Prime Minister's Award for Excellence in Teaching Science, Math and Technology. Mossom Creek's biggest challenge lies ahead as development plans are being formulated for the area around its pristine watershed. With tailed frogs and clean water in the almost intact watershed, Mossom Creek is unique in the region and merits protection.

First year: 1976

Activity: Hatchery, education,  
Seapens, school support,  
Streamkeepers

Location: Mossom Creek

Persons: 70

Species: Chinook, coho, chum

#### *Falaise Park Neighbourhood Committee*

Shannon Campbell 604/451-9156  
3939 Pine Street

Burnaby, B.C. V5G 1Z3

Over the last two years, this group has been investigating the possibility of daylighting a small

portion of the creek that runs under their neighbourhood park. The section is a tributary of Still Creek and eventually flows into the Brunette Basin. There is little opportunity to view a flowing creek in the City of Vancouver, so this small addition would be much used and appreciated by students and adults alike. Activities include public awareness and education and preliminary investigations to determine feasibility.

First year: 1998

Activities: Community awareness, Education

Location: Falaise Park, Vancouver

Persons: 20

#### *Hutchinson Creek Project*

Larry Cardus 604/469-9255  
10 Parkglen

Port Moody, B.C. V3H 4L1

A unique project in a quiet and private setting has carried out enhancement work on this creek since 1992. An innovative barrel incubator and a small rearing trough are used for incubation and short term rearing of coho and chum. Fry are released into the stream to populate the under-utilized rearing habitat available in the upper reaches of Hutchinson Creek. Larry also involves local school groups and neighbourhood children to help with fry releases.

First year: 1992

Activity: Incubation box and short term rearing

Location: Hutchinson Creek

Persons: 2 plus 2 local classes and neighbourhood kids

Species: Coho, chum

#### *Maplewood Creek Project*

Tom Young

c/o Hanger's 604/925-8158

2012 Park Royal S. 604/929-3108

West Vancouver, B.C. V7T 2W4

Maplewood Creek is a short groundwater-fed tributary to the lower Seymour River. For eight years, up to 35,000 chum were hatched and released from an in-stream incubation box. It was removed in 1997, as chum are now

established in the creek. Although the creek provides good rearing habitat, spawning grounds were considered inadequate for the number of returning adults. In 1998, several hundred feet of new spawning gravel was installed by volunteers near the original incubation box. Habitat work has been carried out to ensure adequate access for adults returning to the creek. Future goals include the restoration of a duck pond into healthy juvenile habitat and additional spawning and habitat improvements in the upper reaches.

First year: 1990

Activity: Habitat improvement

Location: Maplewood Creek

Persons: 20

#### *Morten Creek Project*

Zo Ann Morten 604/986-5059

720 Orwell Street,

North Vancouver, B.C. V7J 2G3

Morten Creek Salmon Enhancement Project began in 1988, and moved to its present location in 1990. It is a community initiative, dedicated to restoring and protecting the salmonid populations of the Lynn Creek watershed. This extremely innovative group created a salmon-bearing stream out of the old leachate ditch in the now closed North Vancouver garbage dump. The project consists of a small hatchery and rearing trough, and a natural rearing and spawning area.

First year: 1988

Activity: Habitat improvement, Hatchery, education, Streamkeeper activities

Location: Lynn Creek, tributaries

Persons: 65

Species: Coho, chum

#### *Mosquito Creek Stewardship Society*

Karen R. Milne 604/986-6715

PO Box 86250

North Vancouver B.C. V7L 4J8

<[www.mosquitocreek.org](http://www.mosquitocreek.org)>

This urbanized watershed overlaps two municipalities plus lands managed by senior government. The group is working to establish

liaisons with all agencies that have an impact on stream habitat.

Members have been active stewards of the Mosquito Creek watershed

since the early 1980s. Spawner surveys have been conducted since 1995. Data collection at the fish ladder, stream map updates and fry trapping are on-going activities.

First year: 1998

Activities: Streamkeepers, fish ladder maintenance,

Location: Mosquito Creek and tributaries: Thain, Wagg and Mission

Persons: 12

#### *North Shore Fish and Game Club*

Terry Bragg 604/985-7272

1846 Draycott Road,

North Vancouver, B.C. V7J 1W7

The North Shore Fish and Game Club's enhancement activities began with the installation of an incubation box on MacKay Creek. It has been in continuous operation since then, producing 15 to 25,000 coho fry per year. The group switched to chum for the 1998 brood year. The club is involved in enumeration and transport to lower release sites each spring. The club is vigilant in its protection of MacKay and other North Vancouver streams, holding a creek cleanup each spring with help from local Scouts and Guides.

First year: 1981

Activity: Incubation box, Fishway

Persons: 20

Species: Chum

#### *North Vancouver School District*

Greg Milner 604/903-3520

1801 Mountain Highway,

North Vancouver, B.C. V7M 2M7

Classroom incubators are an important learning tool, and the North Van School District has more than 70 in operation. The group has been active for more than 15 years, with many teachers taking extra initiative in carrying out Streamkeeper projects on streams near their schools. Teachers distribute eyed coho eggs from

Capilano and Seymour Hatcheries in January to all participating North Vancouver schools.

Activity: Classroom incubation, Education

Persons: 2,500

Species: Coho

#### *Port Moody Ecological Society (PMES)*

Rick Simpson 604/937-5300  
<[rlsimpson@istar.ca](mailto:rlsimpson@istar.ca)>

Noons Creek Hatchery

300 Ioco Road, 604/469-9106

Port Moody, B.C. V3H 2V7

<[pmes@vcn.bc.ca](mailto:pmes@vcn.bc.ca)>

<[www.vcn.bc.ca/pmes](http://www.vcn.bc.ca/pmes)>

Noons Creek Hatchery began in 1978 in a resident's back yard. The Port Moody Ecological Society was formed in 1991 and the City of Port Moody offered a 3.5 acre parcel of land on Noons Creek downstream from the old site. The new hatchery was built on the site and coho stock was provided from nearby Mossom Creek hatchery. The official opening was in June 1993. Today, Noons Creek Hatchery is home to thousands of young coho and chum salmon, and is an active learning centre for school children, community groups and thousands of visitors annually.

The Society has expanded its facility greatly, installing a water quality lab and creating a monitoring program to test water quality regularly in Noons Creek and other local streams.

Since 1995, volunteers have built additional off-channel habitat by hand which has proven very productive. A limited amount of mainstem work has been done to improve fish access and spawning habitat. Members are very interested in creeks in the surrounding area of Port Moody Arm.

First year: 1978

Activity: Streamkeepers, hatchery, Education, Habitat improvement

Location: Noons Creek

Persons: 50

Species: Coho, chum, cutthroat

### *North Shore Streamkeepers*

Karen Munro 604/988-4072  
3465 Sunset Drive,  
North Vancouver, B.C. V7R 4L9  
This is an umbrella group for individuals and groups interested in protecting the health of North and West Vancouver streams. Members are interested in public education, assessment, watershed/stewardship activities and planning and restoration of stream habitat. Typical activities include adult and juvenile salmon surveys on Hastings and Mosquito creeks, mapping and water quality assessment on several streams, bank clean-up, storm drain marking, organizing Rivers Day and other events, participating in the Coho Festival and providing speakers. Special activities include restoration work such as bank planting and off-channel habitat development.  
First year: 1993  
Activities: Streamkeepers,  
Habitat assessment and improvement,  
Spawner surveys,  
Stream clean-up,  
Public awareness  
Persons: 120

### *Reed Point Marina*

Sandie Hollick-Kenyon 666-0743  
Seapen rearing has been carried out at this site since 1986. It is similar to the seapen site located off Ioco Boat Club which is managed by the Burrard Inlet Marine Enhancement Society. Both sites operate so chinook and coho juveniles can be acclimated to salt water before release to the ocean. The marina provides valuable support, storing equipment, and mooring the government boat.  
First year: 1986  
Activity: Seapen rearing  
Location: Port Moody Arm  
Persons: 15  
Species: Chinook, coho

### *Schoolhouse North Project*

Bob Hinkel 604/469-1285  
1675 Ioco Road  
Port Moody, B.C. V3H 2X3  
Members of this project began work on the creek in 1992. The primary focus to date has been the cleaning, repair and maintenance of an old fish ladder that allows fish passage up to the culvert passing under Ioco Road. Salmon appear to be utilizing the productive habitat that is found above the culvert.  
First year: 1998  
Activity: Habitat improvement  
Location: Schoolhouse North Creek  
Persons: 5

### *Seymour Salmonid Society (CEDP)*

Renate Lehmann and  
Brian Halabourda 604/640-9690  
PO Box 30045  
North Vancouver B.C. V7H 2Y8  
<www.seymoursalmon.com>  
The Seymour River Hatchery is located in the Seymour River watershed, in the Lower Seymour Conservation Reserve. It began as a small facility run under contract by BCIT.  
In 1987, the Seymour Salmonid Society, a community based group, took over the hatchery. From this arose a beautiful new hatchery and education centre with a volunteer base of several hundred. The society's specific goals are fisheries enhancement and public education.  
In 1997 the GVRD became an equal partner in funding the hatchery, providing greater security and the ability to make long term plans. The hatchery has a large office/educational area, incubation room, semi-natural rearing and holding channels, covered rearing area and a workshop/storage area. A new large pagoda and many picnic tables mean students, volunteers and visitors can enjoy the incredible scenery on a year round basis. The hatchery provides coho and valuable assistance to PIP projects and to classroom incubators. Staff is involved in on-going planning and restoration activities in the

watershed. The hatchery also supports a primary and intermediate *Gently Down the Stream* program each spring that is very popular with lower mainland schools.

First year: 1977  
Activity: Hatchery, education,  
Habitat improvement.  
Location: Seymour River  
Persons: 100 plus 4 full time staff  
Species: Coho, chinook (for Burrard Inlet seapens), chum, pink, summer and winter run steelhead, cutthroat

### *Spanish Banks Streamkeepers*

Dick Scarth 604/228-9346  
4433 West 1<sup>st</sup> Ave.  
Vancouver, B.C. V6R 4H9  
<Scarth@vcn.bc.ca>  
This new group got started in 2000 after completion of the daylighting project on the lower portion of Spanish Banks Creek. Fish now have access to a small urban watershed and Vancouver has a wonderful new area to view salmon. There has been longstanding community interest in the project and now that it's finished, this streamkeeper group carries out activities in this and two neighbouring creeks. The project receives a lot of attention due its location in Vancouver in a highly used and much loved recreation area. Members are very interested in doing storm drain marking and land owner contact to raise the level of awareness in the surrounding area. They are working with UBC students to carry out streamkeeper activities in the watershed.  
First year: 2000  
Activity: Enhancement,  
Streamkeepers,  
Public awareness  
Location: Spanish Banks Creek  
Persons: 25  
Species: Coho, chum

### *Trans Mountain Pipeline Company*

Ken Koscielski 604/298-3612  
7815 Shellmont Street,

Burnaby, B.C. V5A 4S9  
Trans Mountain's Westridge Terminal has been involved with salmon enhancement since 1992. The terminal, located on Burrard Inlet, has a small seapen attached to its wharf, used for acclimating coho and chinook smolts to the saltwater before release. Smolt releases are routinely celebrated with local school groups who come down and help out. The group is very generous in providing resources for other activities carried out in Burrard Inlet/Indian Arm. The Trans Mountain work boat and volunteer crew have transported crews to Indian River for chum eggtakes which staff also participated in, and have transported chinook and coho smolts to the Bedwell Bay Ioco seapen site.  
First year: 1992  
Activity: Seapen rearing,  
Community involvement  
Location: Port Moody Arm  
Persons: 6  
Species: Chinook, coho

### *Vancouver Aquarium and Marine Science Centre*

John Fisher 604/659-3491  
P.O. Box 3232  
Vancouver, B.C. V6B 3X8  
The Vancouver Aquarium has been actively promoting the salmon resource to the public through incubation, juvenile and adult displays since 1956. The newly created headwaters and salmon stream exhibits that runs from the aquarium to Coal Harbour will serve as another educational tool. Locals and visitors alike will experience the magic of a coastal stream designed to accommodate the salmon life cycle, from emerging fry to returning adults. Observation points and graphic displays along the stream will educate visitors about the many important issues regarding salmon and their habitat as it relates to coastal B.C. A small hatchery and rearing facility has been constructed in the old bear grotto, so

eggs can be taken from returning adults for incubation and early rearing before release to the stream. A volunteer coordinator has been hired to work with people that are interested in becoming involved with the project.

Activity: Hatchery, education and Public awareness  
 Persons: 25  
 Species: Coho, chum, pink

*Vancouver School District*

Bev O'Conner 604/713-5500  
 Shaughnessy Elementary School  
 Interest in the Classroom  
 Incubation Program has been growing steadily in Vancouver, with more than 60 schools now participating. Approximately half release chum salmon fry to Musqueam Creek and Spanish Banks Creek. Coho fry are released to Beaver Creek in Stanley Park. Many teachers incorporate stream

activities with fry releases. Musqueam band members participate in the Musqueam Creek fry releases by providing educational information.

Activity: Classroom incubation, Education  
 Location: Musqueam, Spanish Banks, Beaver creeks  
 Persons: 1,350  
 Species: Coho, chum

*Vancouver Urban Streams Committee*

Nick Page 604/254-0653  
 #203 - West 11th Avenue  
 Vancouver, B.C.  
 This group developed out of the Musqueam Creek Committee in 1999 to work on the feasibility and planning of flow augmentation to the upper portion of Musqueam Creek during the summer low flow period, as well as other projects in

the Musqueam Watershed. A well was dug and a pump installed between 1996 and 1998. Power was connected to the site in the fall of 2000 and the plan is to run the pump during the summer and early fall of 2001. Low summer flow is a concern in the Musqueam Watershed, so with the additional water during this period, it is hoped that production in the creek for coho salmon and cutthroat will increase.

Activity: Flow augmentation, Public awareness  
 Persons: 15

**Education**

The area has a very active education program. School districts involved with *Salmonids in the Classroom* and classroom incubation are North Vancouver, Vancouver and Port Moody. There are also some complex school projects which are described in the project listings above.

**Related Fisheries Contacts**

**Habitat Conservation and Stewardship Program**

Jim Elloitt	604/814-1072	elliottj@pac.dfo-mpo.gc.ca	Mission	AC	Mission
Tom Cadieux	604/814-1076	cadieuxt@pac.dfo-mpo.gc.ca	Mission	SC	Mission
Christina Derksen	604/666-8327	deerksenc@pac.dfo-mpo.gc.ca	Delta	HA	Delta
Megan Sterling	604/666-6479	sterlingm@pac.dfo-mpo.gc.ca	Delta	HA	New Westminster
Ann Bussell	604/6668727	bussella@pac.dfo-mpo.gc.ca	Delta	HFO	Delta
Sue Hahn	604/666-2807	hahns@pac.dfo-mpo.gc.ca	Delta	HFO	Delta

**Major Enhancement Facilities**

*Capilano River Salmon Hatchery*

4500 Capilano Road  
 North Vancouver, BC V7R 4L3  
 Tel: 604/666-1790  
 Fax: 604/666-1949

First year: 1971  
 Location: North Vancouver  
 Species: Chinook, coho, steelhead

# Coulter-Boisvert

## North side of Fraser River, Burnaby to Hope



As the maturity and experience of many of the SEP-PIP, Streamkeeper, and watershed stewardship volunteers increases, so too does the complexity of circumstances they are involved with. Relationships with staff of regional, municipal, provincial and federal governments and from the corporate sector are ever expanding as are the pressures to develop in urban environments. It is hard to imagine the outcome for the environment in many circumstances were it not for the incredible dedication of the many volunteer resource stewards involved. Here is a sample of projects in my area.

### Community Projects

#### *ALLCO Hatchery*

Ron Maclean 604/463-8891  
Alouette Correctional Center  
Box 1000  
Maple Ridge, B.C. V2X 7G4  
Located at the Alouette Correctional Centre on the south bank of the South Alouette River in Maple Ridge, this facility is operated in partnership between DFO, MOELP, BC Buildings Corporation, the Alouette River Management Society, and the Ministry of the Solicitor General. Corrections staff direct inmates to carry out enhancement activities. In 1997, this facility began enhancing chinook transplanted from the Chilliwack River. This is now possible due to an historic flow agreement negotiated with BC Hydro by the Katzie First Nations, the Alouette River Management Society, MOELP, and DFO. Large earthen ponds are used for long-term coho rearing. A second, smaller, groundwater-fed hatchery serves as an annex to the main hatchery and is primarily used to augment capacity and reduce risks during primary incubation. Chinook eggs originating from the Chilliwack River and destined for the Coquitlam River are first incubated to the eyed-egg stage at this facility. A unique self-adjusting, air-floatation broodstock collection fence, designed by CA Maurice Coulter-Boisvert and fabricated with

inmate labour, was installed in the summer of 1998 and has significantly reduced the need for off-site collection.  
First year: 1979  
Activity: Hatchery  
Location: S. Alouette River  
Persons: 2 employees,  
5 - 10 inmates  
Species: Coho, chum, chinook,  
pink, steelhead, cutthroat

*Alouette River Management Society*  
Geoff Clayton 604/465-3894  
Activity: Watershed Management

*Balabian Creek*  
Harry Hooge Elementary  
Keith Rogalski 604/463-0866  
Activity: Streamkeepers

*Beecher Creek*  
8th Northview Scouts  
Jim Atwater 604/822-4694  
Activity: Streamkeepers

*Bell-Irving Kanaka Creek Hatchery*  
John Heaven 604/462-8643  
11450 - 256th St.  
Maple Ridge, B.C. V2W 1H1  
This hatchery, located in the Kanaka Creek Regional Park, is an integral part of the interpretive focus offered by the Greater Vancouver Regional District Parks Department who are partners with DFO and MOELP in its operation. John Heaven, the original and current manager, has become familiar to hundreds of teachers and thousands of students from Lower Mainland schools welcomed here over the years. Pumped surface water feeds the hatchery and long-

term rearing is done in large earthen ponds. Broodstock collection and adult enumeration is assisted by operation of a cable-suspension fence a few miles downstream where the public is invited to witness the operation and to see returning adult chum and coho in typical spawning condition. Eggs for the *Salmonids in the Classroom* projects in Vancouver, Burnaby, New Westminster, Coquitlam, and Maple Ridge school districts originate from Kanaka Creek and this hatchery, as do chum and coho for Byrne Creek in Burnaby, coho for the Brunette watershed and chum for the Musqueam Creek project in Vancouver. It also is currently home to KEEPS (Kanaka Education and Environment Partnership Society).  
First year: 1982  
Activity: Hatchery, fence  
Education support,  
Habitat protection,  
Stream stewardship  
Location: Kanaka Creek  
Persons: 2 employees,  
6 volunteers  
Species: Coho, chum, pink (when available), steelhead,  
cutthroat

*Burnaby Lake System Project*  
Mark Angelo, Gary Rosberg,  
Bob Gunn 604/432-8270  
BCIT  
3700 Willingdon Ave.,  
Burnaby, B.C. V5H 3H2  
Activity: Streamkeepers  
Watershed Management

#### *Byrne Creek Streamkeepers and the Vancouver Angling & Game Association (VAGA)*

Joan Carne 604/433-5125  
6392 Neville Street  
Burnaby, B.C. V5E 1A6  
Volunteers Ken Glover, Bert Richardson and Bob Fuller adopted Byrne Creek in 1988 and have been actively trying to restore its coho population ever since. In 1998, the VAGA handed the reins for the project to Joan Carne, who has added significantly to the ranks of volunteers. A recent project to raise awareness about storm drain issues involved more than a thousand students, volunteers and City of Burnaby Councillors in the "Steam of Dreams" project. Almost 1500 individually-painted wooden fish were mounted on a wire fence surrounding a proposed development for a Rivers Day event in 2000.  
First year: 1988  
Activity: Streamkeepers,  
Chum, coho transplants  
(Kanaka),  
Stream rehabilitation  
Location: Byrne, Kaymar, Hollis  
creeks  
Persons: 6

*City of Coquitlam*  
Parks and Leisure Services  
Roberta Cuthbert-Webber  
604/933-6114  
Activity: Streamkeepers support

*City of Port Coquitlam*  
Engineering Department  
Alan Jensen 604/944-5411  
Activity: Streamkeepers support

*Como Watershed Group*

Pamela Zevit 604/939-0523  
Activity: Watershed Management

*Coquitlam River Hatchery  
(POCO Hunting & Fishing Club)*

Wayne Goeson  
PO Box 78051, Pharmsave  
Port Coquitlam, B.C. V3B 7H5  
Operated by volunteers from the Port Coquitlam and District Hunting and Fishing Club, this project has focused on coho and steelhead enhancement for years. Since 1997, chinook eggs have been transplanted from the Chilliwack Hatchery. This is now possible due to more favourable river conditions following increased flows provided by BC Hydro. Coquitlam River coho fry and smolts from this facility have been used to help re-stock tributaries and several major habitat rehabilitation and restoration projects completed by the Resource Restoration Division. The hatchery is fed by water from Coquitlam Lake (courtesy of the GVRD), surface gravity-fed water from a nearby creek, and lastly from an emergency backup supply pumped from the mainstem Coquitlam River. Incubation water is filtered, sterilized with an ultraviolet filter, then re-circulated to reduce incubation mortalities from severe fungus outbreaks in the past. The late Alan Grist was involved in nearly every aspect of the Coquitlam River. His efforts were recognized in 1998 with the dedication of Grist Channel, a new habitat restoration project.

First year: 1981  
Activity: Hatchery,  
Stream stewardship  
Location: Coquitlam River,  
tributaries  
Persons: 12  
Species: Coho, chinook, steelhead

*Coquitlam River Watershed Society*

Tony Matahlija 604/464-4520

Activity: Watershed Management

*Eagle Creek Streamkeepers*

Anita Beo 604/299-9270  
Activity: Streamkeepers

*Hoy Creek Optimist Hatchery*

Lori Girvan 604/945-6732  
Suite 123 – 2960 Princess Cr.,  
Coquitlam, B.C. V3B 7P2  
Rebuilt at the site of an old commercial trout hatchery and nestled between a huge condominium complex and a Coquitlam linear park, this project began as an interpretive opportunity for park visitors. It has expanded to include an interpretive center, rearing ponds, a coho spawning and rearing channel, rearing trough, and mini-hatchery. Operated by volunteers from the Hoy/Scott Creek Streamkeeper group, this project is trying to rehabilitate coho stocks adversely affected by urban development. Hoy Creek cannot be relied on to supply clean water for incubation, so a water recirculation system was installed. Approximately half of the coho have been transplanted from the Coquitlam River Hatchery. Hoy Creek is a tributary to Scott Creek, a tributary of the Coquitlam River.

First year: 1994  
Activity: Smolt rearing,  
Public awareness,  
Habitat improvement  
Location: Hoy Creek,  
Coquitlam River  
Species: Coho

*Hoy/Scott Creek Streamkeepers*

Lori Girvan 604/945-6732

*Hyde Creek Residents Association*

Jim & Jordan Wycherley  
Ken Rempel 604/941-9846  
1642 Windermere Place  
Port Coquitlam, B.C. V3B 2K2  
Located in a volunteer's back yard, this little facility is attempting to restore chum and coho populations of Hyde Creek on the border of Coquitlam and Port Coquitlam. Hyde is a tributary of the Pitt watershed and is heavily impacted by urban development. Annual low summer flow is a chronic problem.

The hatchery was relocated upstream in 1998 following the departure of the former owner/ volunteer and reconfigured to allow the pumped surface-flow water supply to be recirculated. This will minimize the impact of occasional pollution or heavy silt load in the creek. Heath tray incubators replaced an upwelling incubation box in 1999. Planning is underway to relocate the facility once again.

First year: 1985  
Activity: Broodstock collection,  
Incubation, rearing,  
Release,  
Fry salvage,  
Stream stewardship  
Location: Hyde Creek, Coquitlam  
and Port Coquitlam  
Persons: 4-6  
Species: Coho, chum

*Hyde Creek Streamkeepers*

Ted Wingrove 604/941-2176  
Activity: Streamkeepers

*Kanaka Education and  
Environmental Partnerships  
Society (KEEPS)*

Dave Smith 604/462-8643  
Activity: Watershed Management

*Lubbock Creek Streamkeepers*

Burnaby  
Harry Karmista 604/540-4649  
Activity: Streamkeepers

*Maple Creek Streamkeepers*

Diane Ramage 604/464-1099  
Activity: Streamkeepers

*RACE for the Coquitlam River  
Watershed*

Ian McArthur 604/464-9255  
Activity: Streamkeepers

*River Springs Salmon  
Enhancement*

John Jakse 604/464-4179  
1269 River Drive  
Coquitlam, B.C. V3E 1N7  
This tiny facility was constructed inside the caretaker's workshop for the River Springs housing project on the Coquitlam River. Pumped surface flows are delivered through

a header tank to twin vertical stack incubation cabinets. It was assembled to reduce dependence on the POCO Hatchery and to provide fry stocking capability for Oxbow/ River Springs habitat improvement constructed by DFO's Resource Restoration Division. Chum, coho and transplanted Chilliwack chinook are incubated and reared in nearby lake pens for a brief period prior to release.

First year: 1997  
Activity: Broodstock collection,  
Incubation, rearing,  
Stream stewardship  
Location: Coquitlam River  
Persons: 4-6  
Species: Coho, chum, chinook  
(transplants)

*Sapperton Fish & Game Club*

Elmer Rudolf 604/521-3346  
Box 40099

New Westminster Postal Outlet  
New Westminster, B.C. V3L 4X9  
The Club has been involved in the Brunette watershed for more than 20 years but only recently have they been able to develop their own fish culture capability. Based on an artesian water source supplying only 35 gallons per minute at 10 degrees Celsius, a small hatchery was constructed initially to hold adult broodstock but subsequently to include incubation capability. Reliance on the Alloco Hatchery in Maple Ridge is now minimized. Coho were successfully incubated for the first time in 1997. Three large riffle-weirs were constructed in the Brunette River above North Road in September, 1999 with the help of Sechelt CA Grant McBain. In addition to increasing overall channel diversity, the back-watering effect of the uppermost weir allowed for unimpeded passage of a small restored chum population for the first time in more than 50 years. Additional weirs are proposed for the Brunette River in the future: First year: 1997 (hatchery)  
Activity: Broodstock collection,  
Incubation, rearing,  
Habitat improvements,

Stream stewardship  
 Location: Brunette River,  
 tributaries  
 Persons: 12  
 Species: Coho (at Alouette River  
 Corrections.)

*Stave Valley Salmonid  
 Enhancement Society*

Jim Taylor, George Donatelli,  
 Paul Holmgren, Dale Clark  
 11744 Statim Rd, 604/462-7666  
 Mission, B.C. V2V 6H5  
 This society is an amalgamation of  
 interests in salmon enhancement  
 in the Stave Valley. There are almost  
 as many individual project sites as  
 members, each with their particular  
 local interest and each taking  
 advantage of their respective  
 property characteristics. Jim focuses  
 on student participation with chum  
 collection at the Stave River and  
 coho from Silverdale Creek. George

and Dale operate the Silvermere  
 Lake fishway for coho and augment  
 their production with Stave chum  
 which are released to Silvermere  
 Lake tributaries. Paul has  
 completed development of semi-  
 natural rearing ponds on his  
 property and has incubation and  
 adult holding capability for coho  
 from Silverdale and Chester creeks.  
 New rearing ponds for secondary  
 rearing for coho are now in place  
 at two sites near the headwaters and  
 a tributary of Silver Creek. One of  
 these is at a former trout hatchery  
 and "u-catch-em" operation. A new  
 M C-B floating broodstock  
 collection fence was installed in  
 lower Silverdale Creek in 1999. This  
 will allow for a considerably  
 reduced effort and improved  
 survival of broodstock. New  
 member Dale Clark has added  
 Thompson Creek near Ruskin to

the project list. A fishway to improve  
 access to the creek was installed by  
 RRD in 1998. Dale hopes to  
 accelerate the rebuilding effort with  
 some minor incubation assistance.  
 First year: 1980  
 Activity: Broodstock collection,  
 Incubation, rearing,  
 Stream habitat  
 improvements  
 Stewardship, education.  
 Location: Silvermere Lake and  
 tributaries, Silverdale  
 Creek, Thompson Creek  
 Persons: 10-12  
 Species: Coho, chum

*Stoney Creek Environmental  
 Committee*

Jennifer Atchison 604/420-9132  
 Activity: Watershed Management

**Education:**

There are 81 classroom incubators  
 and more than 5,000 students  
 participating in *Salmonids in the  
 Classroom* activities. Bell-Irving  
 hatchery provides most of the chum  
 eggs, which are delivered to these  
 schools in five school districts.  
 Many schools release their fry in  
 local streams where students are  
 encouraged to complete habitat  
 surveys and also promote  
 environmental awareness in their  
 neighbourhoods by marking storm  
 drains with yellow fish.

**Related Fisheries Contacts**

**Habitat Conservation and Stewardship Program**

Markus Feldhoff	604/814-1077	feldhoffm@pac.dfo-mpo.gc.ca	Mission	HA	Mission
Kim Ogilvie	604/814-1074	kogilvie@pac.dfo-mpo.gc.ca	Mission	HA	Mission
Solvej Patschke	604/814-1075	patschkes@pac.dfo-mpo.gc.ca	Mission	HA	Chilliwack Forest District
Janice Jarvis	604/467-2315	jjarvis@direct.ca	Maple Ridge	SC	Alouette River Management Society
Ken Lewis	604/826-6252	klewis@northfraser.org	Mission	SC	CFDC - North Fraser

**Major Enhancement Facilities**

*Inch Creek Hatchery*

Box 61, 38620 Bell Rd.,  
 Dewdney, B.C. V0M 1H0  
 Tel: 604/826-0244  
 Fax: 604/826-1446

First year: 1982  
 Location: East of Mission  
 Species: Coho, chum, ponded  
 sturgeon

# Joe Kambeitz

## South side of Fraser River to Boston Bar



The beginning years of a new century will be exciting and challenging for community projects in my area. The volunteers continue to display enthusiasm and skill in the projects they choose. Many have undergone radical changes through stormy annual general meetings that will match new leadership against old goals. Several of the projects are almost 20 years old and continue to excel in the fields of enhancement, habitat restoration, and public education. The Habitat Conservation and Stewardship Program, still in the formative stages, is slowly providing opportunities for some groups to work collectively within shared areas. Overall there is good cause to feel optimistic about the future.

### Community Projects

#### *Centre Creek Corrections*

Len Ames 604/824-2229  
Box 365

Chilliwack, B.C. V2P 6J4

This project is operated by juvenile offenders and works with the very late-returning coho of Elk Creek.

These coho return to spawn in January, February and March. The project collects eggs from these fish and raises them to the smolt stage to try and keep this unique run of fish from disappearing.

First year: 1982

Activity: Hatchery

Location: Elk Creek, Upper  
Chilliwack River

Persons: 100

Species: Coho

#### *Cougar Canyon Creek Enhancement*

Pete Willows 604/594-5377  
10718 Ramona Way  
Delta, B.C. V4C 6S6

Cougar Canyon Creek is the only salmon-spawning creek in the municipality of Delta. This group has struggled to protect this stream from the onslaught of development.

In their project they have worked with schools, Boy Scouts and the municipality. They operate a small, spring-fed incubator with a transplant of coho eggs from Inch Creek Hatchery to help supply fry for this creek.

First year: 1986

Activity: Incubation box

Location: Cougar Canyon Creek

Persons: 25

Species: Coho

#### *Elgin Creek*

Larry Rensell 604/536-7593  
14391 Crescent Road  
Surrey, B.C. V4P 2A2

This unique project takes chinook fry from the Steveston Hatchery and raises them for a year, then releases them to the ocean. Elgin Creek is located in the lower part of the Nicomekl River and is influenced by the tide. There is a small run of wild coho in this stream and the group is trying to protect and enhance these fish.

First year: 1997

Activity: Rearing,  
Habitat protection

Location: Elgin Creek

Persons: 20

Species: Chinook

#### *Gulf of Georgia Cannery Society*

Vivian Gosslin 604/664-9282  
Steveston Waterfront

This project created public displays inside a historic Fraser River cannery. It informs and entertains thousands of visitors each year.

First year: 1996

Location: Steveston

Activity: Education

Persons: 20

#### *Langley Environmental Partners Society*

Marina Stjepovic 604/533-6054  
4914 - 221st Street  
Langley, B.C. V3A 3Z8

LEPS coordinates fundraising and works closely with many volunteer groups in the Langley area.

First year: 1988

Activity: Habitat restoration

Location: Langley, Little Campbell,  
Salmon, Nicomekl,  
Serpentine rivers

Persons: 200

#### *Little Campbell Hatchery*

##### *(Semiahmoo Fish & Game Club)*

Bob Oswald 604/541-0495  
1284 - 184th Street  
Surrey, B.C. V3S 5J9

This project, started in 1978 on 30 acres of land owned by the Semiahmoo Fish & Game Club, has a mini hatchery building, a steel counting fence in the river, a large nitrifying biofilter for water treatment, nature trails, and an environmental meeting centre. The project works with coho, chinook, chum, steelhead and cutthroat.

Tours of the facility are given on request.

First year: 1978

Activity: Hatchery, rearing,  
Tours by request

Location: Little Campbell River

Persons: 400

Species: Coho, chinook,  
steelhead, cutthroat

#### *McLellan Incubation*

Norm McLellan 604/888-6161  
Box 95

Langley, B.C. V0X 1J0

This project mainly applies for transplants of chum fry from Inch Creek Hatchery for planting into West Creek.

First year: 1986

Activity: Incubation, planting

Location: East, West creeks

Persons: 6

#### *Nicomekl Enhancement Society*

Drew Waska 604/888-4998  
PO Box 1184

Fort Langley, B.C. V1M 2S5

This very enthusiastic group is at the groundbreaking stage for a new hatchery. For several years, they have worked from their makeshift facility with coho, red and white chinook, pinks and chum. These fish are reared to the fry stage and liberally planted throughout the system.

First year: 1988

Activity: Incubation

Location: Nicomekl River

Persons: 150

Species: Coho, chum, red and  
white chinook, pinks

#### *Ravine Park Salmonid Enhancement Society*

Ravine Park 604/852-8441  
c/o Sammy Tucker

2395 Crescent Way

PO Box 464

Abbotsford, B.C. V2S 5Z5

This is a long-time group with a brand new hatchery. It is located right behind Abbotsford Senior

High School. Like previous projects from this group, it will raise coho for Clayburn and Stoney creeks.

Students, teachers, and the society operate this recirculating hatchery.

First year: 1981

Activity: Incubation, rearing,  
School support

Location: Clayburn Creek

Persons: 200

Species: Coho

*Salmon River Enhancement Group*  
Mr. McFee 604/533-1919  
23963 - 58A Place  
Langley, B.C.

This group does extremely good work on the Salmon River. They are experts at involving the community in helping to protect the habitat and the fish. At any event or display in the area, this society is front and centre with its groups and its message.

First year: 1994  
Activity: Streamkeepers,  
Habitat improvement,  
Education  
Location: Salmon River  
Persons: 50

*Save Our Fish Foundation*  
P.O. Box 11161 604/689-5589  
1900 - 1055 W. Georgia St.,  
Vancouver, B.C. V6E 4J2

This foundation raises funds and applies its expertise on stream signage, No Fishing boundary signs and the Storm Drain Marking Program throughout the Lower Fraser watershed.

First year: 1998  
Activity: Signage, education

Location: Lower Fraser streams  
Persons: 100

*Skow Kale Project*  
Skow Kale First Nation  
7686 Chilliwack River Rd.,  
PO Box 365  
Sardis, B.C. V2R 1A7

This project, operated by the Skow Kale Band, produces valuable coho smolts for the Little Chilliwack. This creek flows, literally, through downtown Chilliwack.

First year: 1980  
Activity: Incubation, rearing  
Location: Little Chilliwack River  
Persons: 10  
Species: Coho

*Steveston Salmon Hatchery*  
Steveston Senior High School  
10440 No. 2 Road 604/668-6500  
Richmond, B.C. V7E 2E3

This is a great project that provides education plus chinook smolts for the Nicomekl River. This is a totally recirculating hatchery — no stream in; no outflow — built within the courtyard of the school. It is capable of raising 20,000 chinook smolts and is totally

operated by students in the Hatchery Club. The project also produces all the egg-to-fry displays for the B.C. Teachers Federation.

First year: 1987  
Activity: Hatchery, education,  
Tours by request  
Location: Steveston  
Persons: 100  
Species: Coho, chinook

*Tynehead Hatchery*  
Fred Jeans 604/589-9127  
16585 - 96th Ave.  
Surrey, B.C. V3R 5W7

This is a large project on the Serpentine River. Located within the GVRD's Tynehead Regional Park, the hatchery works with coho, chum, steelhead, and chinook. The well-maintained project has become a focal point for people wishing to protect the Serpentine River.

First year: 1987  
Activity: Hatchery, rearing,  
Tours by request  
Location: Serpentine River  
Persons: 100  
Species: Coho, chinook, chum,  
steelhead

## Education:

There are 167 classroom incubators and more than 10,000 students participating in *Salmonids in the Classroom* activities in five school districts. Volunteers at community hatcheries such as Little Campbell, Tynehead, and Nicomekl support these schools by providing eyed eggs for the classroom incubators and giving talks and tours to students. Storm drains are marked with yellow fish by many students to promote environmental awareness in their neighbourhoods.

## Federal Fisheries Resources:

### Habitat and Conservation Stewardship Program

Christina Engel	604/556-3094	engelc@pac.dfo-mpo.gc.ca	Abbotsford	HA	Ministry of Agriculture and Food
Cheryl Johnston	604/666-2719	johnstonc@pac.dfo-mpo.gc.ca	Delta	HA	Delta
Andrew Appleton	604/724-8626	aappleton@tol.bc.ca	Vancouver	SC	Langley Environmental Partners Society
Sheila Creighton	604/826-6252	screighton@northfraser.org	Mission	SC	CFDC - North Fraser
Jim Vanderwal	604/605-3461	jvanderwal@fraserbasin.bc.ca	Vancouver	SC	Fraser Basin Council

### Major Enhancement Facilities

*Chilliwack River Hatchery*  
55205 Chilliwack Lake Road  
Chilliwack, B.C. V4Z 1A7

Tel: 604/858-7227  
Fax: 604/868-0461

First year: 1981  
Location: Near Chilliwack  
Species: Coho, chinook, chum,  
steelhead

# Dennis Demontier

## Central interior: Boston Bar to 100 Mile House



The main focus for community involvement in the central interior is education. Approximately 85 schools raise salmon in the classroom. These schools are supported by education co-ordinators Joanne Nicklas, Neil Brookes and Marlene Wall. These projects have been very important in this area, helping the general public become aware of salmonids and their habitat.

A new and exciting support for communities is the Habitat Conservation and Stewardship Program. The habitat auxiliaries and stewardship coordinators are instrumental in responding to public participation in habitat and enhancement projects. My role has been to support the HAs and SCs with funding,

contacts and advice.

The Community and Economic Development Program involving the Skeetchestn Indian Band and the North Thompson Indian Band is still fulfilling a meaningful assessment program for coho. Information gathered from these activities will aid in the management and understanding of these fish.

### Community Projects

#### *City of Kelowna*

Michelle Kam, 250/862-3339

Tracy Gow  
City Hall  
1435 Water St.,  
Kelowna, B.C. V1Y 1J4

The City of Kelowna has a watershed coordination program. The city coordinates streamkeepers activities, stream bank stabilization projects, kokanee interpretive field trips and classroom salmonid incubation.

First year: 1996

Location: Kelowna, B.C.

Persons: Four schools, numerous community organizations.

Species: Kokanee

#### *Kamloops Wildlife Park*

Rob Purdy 250/573-3215

Box 698  
Kamloops, B.C. V2C 5L7

The Kamloops Wildlife Park is located on Campbell Creek, which is a tributary to the South Thompson River. The Park is concerned with education and riparian restoration of salmonid habitat.

First year: 1999

Activity: Streamkeepers:  
Interpretive centre

Location: Campbell Creek

Persons: 15

Species: Coho

#### *Kingfisher Environmental Interpretative Centre Society*

Neil Brookes 250/838-6569  
R.R. #2, Mabel Lake Road  
Enderby, B.C. V0E 1B0

This hatchery and interpretative centre is located on the banks of the Shuswap. The centre is a focal point for schools and local volunteers.

First year: 1981

Activity: Hatchery,  
Interpretative centre

Location: Shuswap River

Persons: 30

Species: Chinook

#### *Lillooet Osborne Hatchery*

Dave Jones 250/256-4484

Box 1281  
Lillooet, B.C. V0K 1V0

A small hatchery on a sheep pasture golf course. Ground water ensures incubation and rearing success.

First year: 1980

Activity: Hatchery and support facility to Lillooet schools

Location: Lillooet

Persons: 5

Species: Chinook, coho

#### *North Thompson Indian Band*

Greg Fortier 250/672-9995  
Box 220

Barriere, B.C. V0E 1E0

A satellite assessment facility located on Dunn Creek near Little Fort. The assessment data helps manage the coho in the North Thompson River area.

First year: 1984

Activity: Assessment hatchery,  
CWT program

Location: Dunn Creek

Persons: 3

Species: Coho

#### *Skeetchestn Indian Band*

Don Ignace 250/373-2493  
Box 178

Savona, B.C. V0K 2J0

A satellite assessment facility located on the Deadman River. The assessment data helps manage the coho and chinook in the Thompson River area.

First year: 1984

Activity: Assessment hatchery,  
CWT program

Location: Near Savona

Persons: 3

Species: Chinook, coho

#### *Armstrong Fish and Game Club*

Kim Fulton 250/546-8778  
C-7 Henderson Drive, R.R. 1

Armstrong B.C. V0E 1B0

Kim continued his work as "Dr. Fish" and in networking B.C. rivers with Simon Fraser University's web site. He and Neil Brookes also escorted a group of students on a

very successful exchange trip to Japan — a follow-up to a Japanese visit to the Okanagan in 1997.

First year: 1980

Activity: Stream enhancement,  
Education

Location: Armstrong and area creeks

Persons: 10

#### *Friends Of Violet Creek*

Greg Wiebe 250/838-2217  
Box 160

Grindrod, B.C. V0E 1Y0

A small community habitat project near Grindrod on a small tributary to the Shuswap River. The group is concerned with the future of the watershed and is doing small habitat projects to help salmonid fry. It has worked with B.C.

Highways to install a fish friendly culvert and has fenced pasture to exclude cattle. Future plans will include planting riparian trees and shrubs.

First year: 1997

Activity: Habitat projects

Location: Violet Creek

Persons: 5

## Education

### School District 22 (Vernon)

Anne Young 250/542-1181  
7322 Grant Street  
Vernon, B.C. V1T 6Y5  
Coordinator: Neil Brookes.

The Vernon School district supports approximately 35 classroom incubators.

The school district supports the incubation program by providing live egg takes, field trips too

Coldstream Creek, fry release field trips, dissections and workshops.

First year: 1981  
Location: North Okanagan  
Persons: 35 schools  
Species: Chinook, kokanee

### School District 29 (Lillooet)

Roberta Seed 250/256-7543  
P.O. Box 968  
Lillooet, B.C. V0E 1V0  
Coordinator: Marlene Wall. The Lillooet School District supports

approx. seven classroom incubations.

First year: 1980  
Location: Lillooet, Lytton  
Persons: 7 schools  
Species: Coho

### School District 73 (Kamloops)

Joanne Nicklas 250/579-92283  
David Thompson Elem. School  
1051 Pine Springs Rd.  
Kamloops, B.C. V2B 7W3  
Coordinator: Joanne Nicklas. The Kamloops School District supports

approx. 35 classroom incubations. The program also produces a monthly newsletter and a web page <<http://www.sd73.bc.ca>>. The school district supports the incubation program by providing live egg takes at each school, all day field trips in May to release fry, dissections and workshops.

First year: 1980  
Location: Kamloops  
Persons: 35 schools  
Species: coho

## Related Fisheries Contacts

### Habitat and Conservation Stewardship Program

Mike Crowe	250/851-4963	crowem@pac.dfo-mpo.gc.ca	Kamloops	AC	Kamloops
Kelly Austin	250/674-2578	austink@pac.dfo-mpo.gc.ca	Clearwater	HA	Clearwater
Sean Bennett	250/256-2662	bennetse@pac.dfo-mpo.gc.ca	Lillooet	HA	Lillooet
Fred Lockwood	250/832-8037	lockwoodf@pac.dfo-mpo.gc.ca	Salmon Arm	HA	Salmon Arm
Sheldon Romain	250/851-4880	romaines@pac.dfo-mpo.gc.ca	Kamloops	HA	Kamloops
Dave Smith	250/490-8253	david.smith@gems8.gov.bc.ca	Penticton	HA	Ministry of Environment, Lands and Parks
Tina Walker	250/851-4862	walkert@pac.dfo-mpo.gc.ca	Kamloops	HA	Kamloops
Byril Kurtz	250/832-8037	kurtzb@pac.dfo-mpo.gc.ca	Salmon arm	HFO	Salmon Arm
Natalie Bandringa	250/828-2551		Kamloops	HS	Fraser Basin Council
Marni Gillis	250/828-3348	mgillis@city.kamloops.bc.ca	Kamloops	HS	City of Kamloops
Jennifer Lansing	250/828-2551	jlansing@fraserbasin.bc.ca	Kamloops	HS	Fraser Basin Council
Kenton Andreashuk	250/417-0662	purcellres@cintek.com	Cranbrook	SC	Columbia-Kootney Fisheries Renewal Partnership
Chris Beers	250/837-2124	cbeers@cablelan.net	Revelstoke	SC	Columbia Kootenay Fisheries Renewal Partnership
Michelle Boshard	250/707-0095	stewardship@syilx.org	West Bank	SC	Okanagan Nation Fisheries Commission
Neil Brookes	250/838-6569	nbrookes@cnx.net	Enderby	SC	Kingfisher Environmental Interpretive Center
Shawn Clough	250/828-9791	sclough@idmail.com	Kamloops	SC	Thompson Basin Fisheries Council
Nikki Crowe	250/672-9995	nikki_crowe@hotmail.com	Barriere	SC	North Thompson Indian Band
Loretta Eustache	250/838-6496	sib06@hotmail.com	Enderby	SC	Spallumcheen Band
Lee Hesketh	250/547-6586	Regenn@ATTCananda.net	Lumby	SC	B.C. Cattlemen's Association
Don Ignace	250/373-2493	dignace@lycosmail.com	Savona	SC	Skeetchestn Indian Band
Pat Matthew	250/828-9764	pmatthew@idmail.com	Kamloops	SC	Shuswap Nation Fisheries Commission
Erin Roberts	250/832-6059	mysticvale@hotmail.com	Salmon Arm	SC	Salmon River Round Table
Murray Ross	250/828-9763	mross@idmail.com	Kamloops	SC	Shuswap Nation Fisheries Commission
Gord Stewart	250/378-4225	sc@nicolavalley.com	Merritt	SC	Nicola Watershed Stewardship & Fisheries Authority
Mike Wallis	250/832-6024	mwallis@shuswap.net	Salmon Arm	SC	Salmon River Watershed Roundtable
Greg Witzky	250/679-8841	albndr@mail.ocis.net	Chase	SC	Adams Lake Band

## Major Enhancement Facilities

### Spius Creek Hatchery

Box 237  
Merritt, B.C. V0K 2B0

Tel: 250/378-2992

Fax: 250/378-3549

First year: 1984

Location: Near Merritt

Species: Coho, chinook, steelhead

# Roy Argue

## Central interior, north of 100 Mile House, and northeastern B.C.



Many of the groups are supported by the stewardship coordinators and habitat stewards in our area. Funding for many of the projects has come from DFO's HRSEP program and the government of B.C.'s FsRBC program. For details on restoration activities in the Central Interior contact, Judy Hillaby.

### Community Projects

*Baker Creek Enhancement Society*  
Dora McMillan 250/992-3770  
405 Barlow,

Quesnel, B.C. V2J 2C3

Group works on riparian restoration and a rearing channel.

First year: 1995

Activity: Habitat protection, Restoration, Streamkeepers

Location: Baker, Narcosli, and Naver creeks

Persons: 12

*Bouchie Lake Ad-Hoc Stewardship Group*

Tony McDonald 250/249-5619

Box 26, RR# 3, Barker Site 2, Quesnel, B.C. V2J 3H7

First year 2000

Activity: Water sampling

Location: Bouchie Lake

*Burns Lake Band*

Chief Robert Charlie 250/692-7717  
Bag 9000

Burns Lake, B.C. V0J 1E0

First year: 2000

Activity: Flow Control

Location: Upper Nechako

*Cariboo-Chilcotin Fly Fishermen's Association*

Paul Carnes 250/392-6344

2027 S. Lakeside Dr.  
Williams Lake, B.C.

Group supports Quesnel River Enhancement Society and stocks lakes with trout.

First year: 1995

Activity: Hatchery, Lake Stocking, Assessment

Location: Williams Lake

Persons: 12

*Cariboo Chilcotin Conservation Society*

Bert Groenenberg 250/398-7033  
Box 6044,

Williams Lake, B.C. V2G 2Y8

First year: 1998

Activity: Assessment, awareness, Restoration

Location: Williams Lake

Persons: 6

*Cariboo Chilcotin Fish Enhancement Society*

Bert Groenenberg 250/398-7033

David Clarke 250/476-1121

Box 4788,

Williams Lake, B.C. V2G 2V8

First year: 1998

Activity: FsRBC Delivery Partner

Location: mid-Fraser River

Persons: 20

*Cariboo Chilcotin Guides and Outfitters*

Stuart Maitland 250/397-2445

Box 1332,

100 Mile House, B.C. V0K 2E0

First year: 1999

Activity: Restoration

Location: Quesnel River

*Cariboo Tribal Council*

Leanne Olinyk 250/392-7361

17 S 1<sup>st</sup> Ave,

Williams Lake, B.C. V2G 1H4

First year: 1998

Activity: Assessment, awareness, Restoration

Location: Williams Lake

Persons: 8

*Carrier Chilcotin Tribal Council*

Cameron Beck 991-9912

59 S 1<sup>st</sup> Ave.,

Williams Lake, B.C. V2G 1H4

First year: 1999

Activity: Assessment, inventory, Mapping

*Carrier Sekani Tribal Council*

Dennis Ableson 250/562-6279

#200-1460 6<sup>th</sup> Ave.

Prince George, B.C. V2L 3N2

First year: 1998

Activity: Inventory, assessment, Genetic preservation

Location: Prince George

Persons: 6

*Charlie Lake Conservation Society*

Ann Sawyer 250/785-9617

Box 720

Charlie Lake, B.C. V0C 1H0

First year: 1998

Activity: Streamkeepers, Information, awareness

Location: Charlie Lake

*Chilako Watershed Council*

Lee Migvar

#202 - 1940 3<sup>rd</sup> Ave.

Prince George, B.C. V2M 1G7

First year: 1999

Activity: Protection, restoration, Mapping, assessment, Education

Location: Chilako River

Persons: 20

*Chimney/Felker Lake Landowners Association*

Clive Stangoe 250/392-3462

RR 1 C-57, Chimney Lk, Rd., Williams Lake, B.C. V2G 2P1

First year: 1995

Activity: Protection, restoration, Awareness

Location: Williams Lake

Persons: 4

*Cottonwood Island Side Channel Organization*

Chris Ritchie 250/563-6611

1133 Limestone Cres.

Prince George, B.C. V2M 4Z5

Group has constructed large side channel.

First year: 1993

Activity: Rearing channel, Awareness

Location: Prince George

Persons: 5

*Cottonwood River Group*

John, Hazel Massier 250/991-9721

4173 Barkerville Hwy,

Quesnel, B.C. V2J 6T8

First year 1999

Activity: Restoration, protection

Location: Cottonwood River

*Dunster Environmental Student Committee*

Jill Howard 250/968-4410

Box 200

McBride, B.C. V0J 2E0

Students help demonstrate Streamkeepers Program in classrooms and perform fish dissections.

First year: 1994

Activity: Streamkeepers,  
Education

*East Francois Lake Community Association*

Gill Kopy 250/699-8677  
Box 24,  
Fraser Lake, B.C. V0J 1S0  
Group is involved with a water storage structure on Borel Lake.  
First year: 1995  
Activity: Streamkeepers,  
Water storage  
Location: Nithi River

*Fraser Fort George Regional Museum*

George Phillips 250/562-1612  
Box 1770,  
Prince George, B.C. V2L 4V7  
Museum staff demonstrates watershed and ocean stewardship ideas through public events.  
First year: 1996  
Activity: Education, awareness  
Location: Prince George  
Persons: 45,000

*Fraser Headwater Alliance*

Roy Howard 250/968-4410  
General Delivery,  
Dunster, B.C. V0J 1J0  
First Year 1998  
Activity: Assessment, restoration  
Location: Upper Fraser River  
Persons: 6

*Hutda Lake Corrections Centre*

Barry Bertrand 250/964-0504  
P.O. Box 9600  
Prince George, B.C. V2L 5J9  
Group operates small hatchery and is involved with riparian restoration.  
First year: 1985  
Activity: Hatchery, tree nursery  
Location: Chilako River  
Persons: 6  
Species: Chinook

*Lheilili Teneb First Nation*

Brian Toth 250/963-5632  
1041 Whennun Road,  
Prince George, B.C. V2K 5G5  
First year: 1997  
Activity: Assessment, inventory  
Location: Prince George  
Persons: 10

*MacKenzie Fish and Game Club*

Albert Grattan 250/997-5224  
Box 1907  
MacKenzie, B.C. V0J 2C0  
Group works on brook trout and kokanee habitat restoration.  
First year: 1996  
Activity: Classroom incubation,  
Education, awareness  
Habitat improvement  
Location: MacKenzie  
Persons: 400

*McMillan Creek Stewardship Group*

Chris DeBruin 250/962-6911  
Mandy Henderson 250/962-7537  
9698 Shelest,  
Prince George, B.C.  
First year: 1997  
Activity: Inventory, restoration,  
Awareness  
Location: Prince George  
Persons: 20

*Nabounli Watershed Enhancement Society*

Lorraine Bell  
Fort St. James Chamber of Commerce  
Box 2002  
Fort St. James B.C. V0J 1P0  
First year: 1992  
Activity: Habitat enhancement,  
Awareness, education  
Location: Nahounli Creek  
Persons: 40

*Nak'azdli Band*

Terry Prince 250/996-7171  
Box 1329  
Fort St. James, B.C. V0J 1P0  
First year: 1987  
Activity: Restoration, assessment  
Location: Sowchea Creek  
Persons: 5

*Nazko Band*

Jack Sebastian 250/992-9085  
3574 Hilborn Rd,  
Quesnel, B.C. V2J 3H9  
First year: 2000  
Activity: Riparian fencing  
Location: Blackwater River  
Persons: 6

*North Cariboo Metis Association*

Tony Goulet 250/992-9722  
#7 345 St. Laurent Ave,  
Quesnel, B.C. V2J 2E1  
First year: 1997  
Activity: Assessment, inventory,  
Mapping, training  
Location: Cottonwood River  
Persons: 6

*One Hundred Mile House Fly Fishers*

Dave Mingo 250/395-6157  
C#7 Holmes Rd, RR#1,  
Lone Bute, B.C. V0K 1X0  
First year: 1999  
Activity: Lake inventory,  
Restoration  
Location: 100 Mile House

*Penny Salmonid Enhancement Society (CEDP)*

James Stoltz  
Penny, B.C. V0J 2K0  
Group operates the Doug Little Community Hatchery at Penny.  
First year: 1983  
Activity: Hatchery, assessment,  
Education,  
Location: Penny  
Persons: 6  
Species: Chinook

*PG Public Interest Research Group*

Shelly Milstein,  
Catherine Kendall 250/960-7474  
3333 University Way,  
Prince George, B.C. V2N 4Z9  
First year: 2000  
Activity: Inventory, awareness  
Location: Prince George  
Persons: 6

*Quesnel River Enhancement Society*

Gary Duccomun 250/989-0451  
c/o 180 Hodgson Road,  
Williams Lake, B.C. V2G 3P6  
The Quesnel River Hatchery supports classroom incubation projects in the Upper Fraser area.  
First year: 1995  
Activity: Hatchery, education  
Location: Likely, B.C.  
Persons: 12  
Species: Chinook

*Quesnel River Watershed Alliance*

Chris Blake 250/620-3498  
Box 1098,  
150 Mile House, B.C. V0K 2G0  
First year: 1997  
Activity: Habitat protection,  
Enhancement,  
Awareness  
Location: Horsefly River  
Persons: 8

*Saik'uz First Nation*

Scott McIntosh 250/567-9293  
RR 1, Site12, Comp 26,  
Vanderhoof, B.C. V0J 3A0  
First year: 2000  
Activity: Assessment, restoration  
Location: Upper Nechako River  
Persons: 4

*San Jose Watershed Group*

Bette McLennan 250/392-6423  
205 Bann Road  
Williams Lake, B.C. V2G 3L5  
First year: 1998  
Activity: Awareness, education  
Location: Williams Lake  
Persons: 50

*Soda Creek Band*

Chief Ralph Phillips 250/297-6395  
17 S 1<sup>st</sup> Ave.,  
Williams Lake, B.C. V2G 1H4  
First year: 1999  
Activity: Restoration  
Location: Williams Lake

*Spruce City Wildlife Association*

Denise Collett 250/962-6455  
Box 392  
Prince George, B.C. V2L 4S2  
First year: 1980  
Activity: Hatchery, education,  
Assessment, restoration  
Location: Salmon River  
Persons: 60  
Species: Chinook

*Stellat'en First Nation*

Chief David Luggi 250/699-8747  
PO Box 760  
Fraser Lake, B.C. V0J 1S0  
First year: 2000  
Activity: Restoration  
Location: Stellako River

### *Streambourne Flyfishers*

Kurt Anderson 250/747-3408  
 3608 Dale Lake Rd,  
 Quesnel, B.C. V2J 3H6  
 First year: 1998  
 Activity: Assessment, inventory  
 Location: Quesnel River  
 Persons: 16

### *T'lazt'en Nation*

Beverly Bird 250/648-3212  
 PO Box 670,  
 Fort St. James, B.C. V0J 1P0  
 First year: 1999  
 Activity: Assessment  
 Location: Stuart Lake

### *Tatlayoko Woodlot Association*

David Clarke 250/476-1121  
 Bow 84  
 Tatla Lake, B.C. V0L 1V0  
 First year: 1999  
 Activity: Assessment, restoration  
 Location: Chilcotin

### *UBC/Alex Fraser Research Forest*

Bev Atkins 250/392-2207  
 72 South 7<sup>th</sup> Ave.  
 Williams Lake, B.C. V2G 4N5  
 First year: 1999  
 Activity: Restoration demonstration, education  
 Location: Gavin Lake

### *Wilf Patenaude*

1582 Beach Cres., 250/747-2654  
 Quesnel, B.C.  
 First year: 1999  
 Activity: Fry salvage  
 Location: Mainstem Fraser River  
 Persons: 2

### *Williams Lake Creek Restoration*

Eric Gunderson  
 Tel/fax: 250/398-8800  
 Rotary Club of Williams Lake  
 Box 4057  
 Williams Lake, B.C. V2G 2V3  
 First year: 1996  
 Activity: Streamkeepers, Awareness  
 Location: Williams Lake Creek  
 Persons: 70

## Education

There has been a decline in classroom incubation projects this year to about 70. Many of the schools are getting involved in Streamkeepers activities and Storm Drain Marking. There have been some new schools in northeastern B.C., including Fort St. John and Chetwynd, which get lots of support from the MacKenzie Fish and Game Club and the Peace Williston Compensation Program.

## Related Fisheries Contacts

### Habitat Conservation and Stewardship Program

Nick Leone	250/561-5368	leonen@pac.dfo-mpo.gc.ca	Prince George	AC	Prince George
Dal Desrochers	250/996-6913	Desrochersd@pac.dfo-mpo.gc.ca	Prince George	HA	Fort St. James
Guy Scharf	250/398-5545	scharfg@pac.dfo-mpo.gc.ca	Williams Lake	HA	Williams Lake
Len Seefried	250/561-5180	seefriedl@pac.dfo-mpo.gc.ca	Prince George	HA	Prince George
Shane Smith	250/398-6544	smithsh@pac.dfo-mpo.gc.ca	Williams Lake	HA	Quesnel
Laura Grafton	250/562-6684	bark@pgonline.com	Prince George	HS	B.C. Conservation Foundation & MAFF
Sharolise Baker	250/562-1408	rae-ufnc@bcgroup.net	Prince George	SC	Upper Fraser-Nechako Fisheries Council
Todd French	250/562-1408	rae-ufnc@bcgroup.net	Prince George	SC	Upper Fraser-Nechako Fisheries Council
Tracey Bond	250/398-8408	Tbond@quesnelbc.com	Williams Lake	SC	Baker Creek Enhancement Society
Susan Hemphil	250/398-8408	hemphill@wlake.com	Williams Lake	SC	Baker Creek Enhancement Society

Education can take place anywhere that children meet fish — in a school, at a hatchery, or beside a salmon-bearing stream. Whenever it happens, a new generation learns about the life cycle of the salmon and about the habitat they must have to survive.



# Al von Finster

## Yukon Territory



The DFO HEB staff in the Yukon is small. We have a team approach to Community Programs. In the summer of 1999, Trix Tanner and I welcomed Lana Miller to our group. Lana has dedicated her time to assisting communities in the design and implementation of projects and restoration plans. Kate Maddigan has been instrumental in the update of information systems to support communities. We have new partners: six community-based Yukon Salmon Committee habitat stewards and one with the City of Whitehorse.

With the settlement of land claims, Yukon First Nations are turning their attention to the resources of their traditional territories and to traditional patterns of use. Partnerships between First Nations and environmental non-government organisations are forming to restore access to, and quality of, salmon habitats.

Interest has remained high despite poor returns of Yukon River salmon. Returns of some stocks in the Tatshenshini River have also been low.

### Community Projects

#### *Champagne Aishihik First Nation*

Lawrence Joe 867/634-2731  
Box 5309

Haines Junction, YU Y0B 1L0  
Upper Nordenskiold River  
Obstruction Removal: The Nordenskiold River is a principal tributary to the Yukon River central mainstem sub-basin. The upper drainage is within the traditional territory of the CAFN and supported a chinook salmon fishery.

Obstructions to upstream migration were noted during an assessment in 1999. The obstructions were removed in 2000.

#### *Yukon Conservation Society & Little Salmon/Carmacks First Nation*

Johnnie Sam 867/863-5576  
Box 109

Carmacks, YU  
Assessment of Chinook salmon habitat in mid Klusha Creek: Klusha supported an aboriginal chinook salmon fishery in Klusha Creek but no salmon have been observed since the 1960s. The YCS/LSCFN partnership assessed available habitat above Airplane Lake to determine restoration strategies.

#### *Little Salmon/Carmacks First Nation*

Johnnie Sam 867/863-5576  
Box 109  
Carmacks, YU

Mid- Nordenskiold River and lower Klusha Creek obstruction removal: Assessments were conducted in 1999 and identified obstructions to the upstream migration of chinook salmon. The LS/C removed these obstructions in 2000.

#### *Kwanlin Dun First Nation*

*Michie Creek*  
Joan Viksten 867/633-7813  
Box 1217  
Whitehorse, YU Y1A 5A5

Obstruction removal: Michie Creek is the primary spawning area for chinook salmon migrating upstream of Whitehorse. Large beaver dams (in excess of two meters in height) were noted in 1999 and the primary spawning grounds were inaccessible to returning chinook salmon. Dams were breached in 2000 and salmon were able to ascend to these grounds.

#### *Whitehorse Correctional Centre McIntyre Creek Incubation*

Ray Biggs 867/393-7226  
25 College Way  
Whitehorse, YU Y1A 5B6  
This pilot groundwater-fed

incubation facility, located in the Upper Lakes sub-basin, continues to provide eggs for Yukon schools. The project incubates chinook eggs from the Takhini River and Tatchun Creek, tags the resultant fry and releases them back to natal streams and nearby tributaries. The Whitehorse Correctional Centre has operated the project since 1996.

#### *Tr'on dek Hwech'in/Yukon River Commercial Fishing Association Dawson Area Salmon Restoration Program*

Jake Duncan 867/993-6974  
Box 844  
Dawson City, YU Y0B 1G0  
This joint First Nations/Fishers Association project is part of a larger program working toward the restoration of salmon stocks in the Tr'on dek Hwech'in traditional area (Yukon River north sub-basin). Following reconnaissance studies in 1997, a counting fence was constructed and has operated on the Chandindu River downstream of Dawson City to determine chinook escapement to the river and to assess the potential for broodstock collection. The location and intensity of chinook spawning in the Klondike River is monitored through the use of a local volunteer's aircraft. Possible sites for incubation facilities are being

assessed. Training programs are being designed and conducted for community members.

#### *Selkirk First Nation Pelly Crossing Area Salmon Restoration Program*

Don Trudeau 867/537-3331  
Box 40

Pelly Crossing, YU Y0B 1P0  
Mica, Willow and Needlerock Creeks are tributary to the Pelly River near Pelly Crossing. Assessments were conducted in 1998 and 1999. Obstructions to upstream migration were noted and were removed in 2000. Adult and juvenile chinook salmon quickly moved into the accessible habitat.

#### *Klondike Snowmobile Association Wolf Creek*

Myrna Engren-Leva 867/667-7680  
Box 9034

Whitehorse, YU Y1A 4A4  
Trail Relocation and Bank Restoration: Wolf Creek is a chinook salmon spawning stream located in a rural residential area of Whitehorse. This project included the relocation of a snowmobile/ATV trail located in the creek, the design and construction of a bridge, and the restoration of stream banks which had been degraded by use of the old trail.

*Yukon Fish & Game Association  
Wolf Creek Monitoring Program*  
Lawrence Vano 867/667-4263  
Box 4095  
Whitehorse, YU Y1A 3S9

This project, which was conducted in partnership with the Whitehorse Rapids Fishway staff, included weekly stream walks to enumerate returning chinook salmon and to document where they spawned.

*Kwanlin Dun First Nation &  
Yukon Conservation Society*  
Croucher Creek program  
Sue Moodie 867/668-5678  
Box 4163  
Whitehorse, YU Y1A 3T3  
Croucher Creek has become a primary research basin for juvenile

chinook salmon habitat utilisation. This project builds on community and DFO studies. The information gained will guide the further development of bio-regional restoration and enhancement activities.

*Nacho Nyak Dun  
Mcquesten River Program*  
John Pattimore 867/996-2415  
Box 220  
Mayo, YU Y0B 1M0

The Mcquesten River is a principal tributary of the mid-Stewart River sub-basin and has been heavily effected by industrial uses. Two projects were conducted this year: the first is the excavation of a channel across the neck of a

meander curve to bypass a log jam which appears to be an obstruction to the upstream migration of salmon. The second project is to test three ground water sites to determine whether they may be used for stream side incubation facilities.

## Education

*Salmonids in the Classroom* curriculum, with related support material including incubation equipment and eggs, is available in all 26 Yukon schools at the Learning Resource Centre and through DFO.

In 2000-2001 teachers in 22 classrooms in nine Yukon

communities ran classroom incubators as part of the program. Schools received around 50 eyed chinook eggs from the McIntyre Creek salmon incubation facility, which is run by the Whitehorse Correctional Centre. Eggs were taken from Tatchun Creek and the Takhini River. (Unfortunately, Morley River chinook eggs and Kluane River green chum eggs were unavailable in 2000, due to low run numbers.) Students will return the resultant fry to these rivers in spring.

## Related Fisheries Contacts

### Habitat Conservation and Stewardship Program

Kate Maddigan	867/393-6703	Maddigank@pac.dfo-mpo.gc.ca	Whitehorse	HA	Fisheries and Oceans, HEB
Beverly Brown	867/863-5520	Bevyse@yknet.yk.ca	Carmacks/Pelly	HS	Yukon Salmon Committee
Sadie Bryan	867/668-8347	sadie.bryan@city.whitehorse.yk.ca	Whitehorse	HS	City of Whitehorse
Jake Duncan	867/993-6210	jduncan@yknet.yk.ca	Dawson City	HS	Yukon Salmon Committee
Brad Wilson	867/634-3843	bwilson@yukon.net	Haines Junction	HS	Yukon Salmon Committee
Isaac Anderton	867/966-3034	Vgrrc@yknet.yk.ca	Old Crow	HS	Yukon Salmon Committee
Marilyn Norby	250/771-3817	ttstudy@hotmail.com	Dease Lake	SC	Tahltan Joint Councils
George Sidney	800/638-9288 ext 433	georgesidney@hotmail.com	Teslin	SC	Yukon Salmon Committee



Protecting and improving fish habitat, through techniques such as planting of native trees and shrubs, is just one facet of watershed stewardship. Such restoration and enhancement of habitat is the major concern of many community-based groups throughout B.C. and Yukon.

# Stream Index

- Airport Creek 6  
 Angler Cove Lake 6  
 Arden Creek 14  
 Armstrong area creeks 37  
 Avril Creek 22  
 Ayum Creek 22  
  
 Babine River 8  
 Baker Creek 39  
 Baxter Creek 5  
 Baynes Sound streams 15  
 Beach Creek 16  
 Bear/Mills Creek 12  
 Beaver Creek 31  
 Bedwell Bay 28  
 Belcarra Beach 28  
 Bella Coola River 10  
 Bigelow (Dahlie) Creek 8  
 Bilston Creek 20, 21  
 Bing Creek 22  
 Birkenhead River 26  
 Blackwater River 40  
 Blaine Creek 5  
 Bonsall Creek 18  
 Bouchie Lake 39  
 Bowker Creek 21  
 Brunette River 34  
 Buck Creek 8  
 Bulkley River 9  
 Burrard Inlet 28  
 Bush Creek 18  
 Byrne Creek 32  
  
 Campbell Creek 37  
 Campbell River 14  
 Cayeghle River 13  
 Chamiss River 12  
 Chandindu River 42  
 Chapman Creek 25  
 Charlie Lake 39  
 Chase River 18  
 Chaster Creek 25  
 Cheakamus River 26  
 Chemainus River 18  
 Cherry Creek 18  
 Chicago Creek 8  
 Chilako River 39, 40  
 Chilliwack River 35  
 Chown Brook 4  
 Chuckwalla River 11  
 Clayburn Creek 35  
 Clements Creek 6  
 Club Creek 8  
 Coho (Mohun) Creek 14  
 Coldstream Creek 38  
 Cole Creek 20  
 Colonial River 13  
 Colquitz Creek 20  
 Conex Creek 6  
 Coquitlam River 33, 34  
 Cordy Creek 13  
 Cortez Island streams 15  
 Cottonwood River 39, 40  
 Cougar Canyon Creek 35  
 Cowichan River 20  
 Cowichan watershed 20  
 Craigflower Creek 21, 22  
 Croucher Creek 43  
 Cypre River 19  
  
 Davidson River 4  
 Davies Creek 26  
 Davis Brook 25  
 Deadman River 37  
 deMamiel Creek 22  
 Dianna Creek 7  
 Douglas Creek 21  
 Dry Creek 13, 18  
 Dunn Creek 37  
  
 East Creek 35  
 East Porpoise Bay 25  
 Elgin Creek 35  
 Elk Creek 35  
 Englishman River 14  
 Esquimalt Harbour 20  
  
 Flat Creek 5  
 Fraser River 41  
 French Creek 16  
  
 Gavin Lake 41  
 George's Creek 5  
 Gold River 12  
 Goldstream River 21  
 Gorge waterway 22  
 Grandon Creek 16  
 Grey Bay Creek 4  
  
 Haans Creek 5  
 Hagan Bight 21  
 Hagan Creek 21  
 Hartley Bay Creek 6  
 Hays Creek 7  
 Hollis Creek 32  
 Honna River 4  
 Horsefly River 40  
 Horseshoe Bay 26  
 Howe Creek 7  
 Howe Sound 25  
 Hoy Creek 34  
 Hutchinson Creek 29  
 Hyde Creek 33  
  
 Ito Brook 15  
  
 Jungle Creek 4  
  
 Kalum River 7  
 Kanaka Creek 32  
 Kaymar Creek 32  
 Kennedy River 19  
 Kilbella River 11  
 Kincolith River 6  
 Kitasoo Creek 10, 11  
 Kitsuksis Creek 18  
 Kitsumkalum River 7  
 Kitwanga River 6  
 Kloiya Creek 7  
 Klusha Creek 42  
 Knight Inlet 12  
  
 Kokish River 13  
 Kootowis River 19  
 Kyolia Creek 7  
  
 Lake Cowichan 21  
 Lang Creek 24  
 Langley River 35  
 Lawn Hill Creek 4  
 Little Campbell River 35  
 Little Chilliwack River 36  
 Little River 15  
 Little Qualicum River 17  
 Lomgon Creek 5  
 Lord Creek 13  
 Lost Shoe Creek 19  
 Lower Fraser 36  
 Lyall Creek 22  
 Lynn Creek 29  
  
 MacLoughlin Creek 10  
 MacMillan Creek 4  
 Mamin River 4, 5  
 Maplewood Creek 29  
 Marble River 13  
 Marble river 12  
 Martin Brook 20  
 Martin River 11  
 Mathews Creek 19  
 McFalls Creek 25  
 McGuffie Creek 25  
 McIntyre Creek 42  
 McNab Creek 24  
 Mcquesten River 43  
 Memekay River 16  
 Metchosin Creek 20  
 Mica Creek 42  
 Michie Creek 42  
 Millard Creek 14, 15  
 Mission Creek 8, 9, 37  
 Mollitors Creek 4  
 Mosquito Creek 29  
 Mossom Creek 28  
 Musqueam Creek 31  
  
 Naden River 4  
 Nahounli Creek 40  
 Nanaimo River 19  
 Narcosli Creek 39  
 Naver Creek 39  
 Needlerock Creek 42  
 Ncomekl River 35  
 Nile Creek 16  
 Nimpkish River 12  
 Nithi River 40  
 Noons Creek 30  
 Nordenskiold River 42  
  
 Oldfield Creek 7  
 Oona River 7  
 Oulet Creek 25  
 Owikeno Bason 11  
 Oyster Bay 16  
 Oyster River 16  
  
 Pachina River 18  
 Pelly River 42  
 Pender Harbour 24  
 Phillips River 14, 15  
 Piercy Creek 15  
 Pine Creek 6  
 Plestid Creek 18  
 Porpoise Bay 24  
 Port Moody Arm 30, 31  
 Powell River 24, 25  
 Pritchard Creek 20  
 Puntledge River 14  
  
 Quadra Island streams 16  
 Qualicum River 17  
 Quatse River 12  
 Quesnel River 39, 41  
  
 Reay Creek 22  
 Red Bluff Lake 6  
 Refuge Cove 24  
 Richards Creek 22, 28  
 Richfield Creek 9  
 Rivers Inlet 11  
 Roberts Creek 25  
 Rogers Creek 18  
 Roy Creek 16  
  
 S. Alouette River 32  
 Sachs Creek 5  
 Salmon Creek 19  
 Salmon R. 16, 35, 36, 40  
 Saltspring Island streams 21  
 San Juan watershed 22  
 Sandhill Creek 21  
 Sargeants Bay 24  
 Schoolhouse N. Creek 30  
 Scott Cove Creek 12  
 Sechelt Inlet 24  
 Serpentine River 35, 36  
 Sewell Head Creek 5  
 Seymour River 30  
 Shawnigan Cr. 20, 21, 22  
 Shawnigan Lake 21  
 Sheldons Lagoon Creek 4  
 Shuswap River 37  
 Silver Creek 7  
 Silverdale Creek 31  
 Silvermere Lake/Creek 34  
 Skidegate Inlet streams 4  
 Skully Creek 6  
 Sliammon River 25  
 Smiths Inlet 11  
 Sooke River 22  
 Sowchea Creek 40  
 Spanish Banks Cr. 30, 31  
 Spring Creek 6  
 Sproat Lake 19  
 Squamish River 26  
 St. Albyns Lake 14  
 Stellako River 40  
 Still Creek 29  
 Stony Creek 21  
 Storries Creek 17  
 Stuart Lake 41  
 Sugsaw Creek 18  
 Sylvia Lake 6  
  
 Tarundle Creek 4  
 Tasu Creek 5  
 Tatchun Creek 42  
 Tatlow Creek 22  
 Telegraph Creek 9  
 TenTen Creek 23  
 Terminal Creek 26  
 Thompson Creek 34  
 Thompson River 37  
 Thornhill Creek 6  
 Thornton Creek 19  
 Tlell River 5  
 Toboggan Creek 9  
 Torney Creek 4  
 Tranquil River 19  
 Trent River 14  
 Tsable River 15  
 Tsolum River 14, 17  
  
 Upper Bulkely River 9  
 Upper Chilliwack River 35  
 Upper Fraser River 40  
 Upper Hartley Bay Lake 6  
 Upper Lillooet River 26  
 Upper MacKay Creek 29  
 Upper Nechako R. 39, 40  
 Upper Nordenskiold R. 42  
  
 Violet Creek 37  
  
 Wannock River 11  
 Warner Bay 13  
 West Creek 35  
 West Vancouver streams 27  
 Whalen Lake 6  
 Williams Lake 39  
 Williams Lake Creek 41  
 Willow Creek 17, 42  
 Wolf Creek 42, 43  
 Woodhus Creek 16  
 Woods Creek 17  
 Wsikem Creek 23  
  
 Yakoun River 4, 5  
 Yukon River 42  
  
 Zeballos River 13  
 Zymacord River 6



Published by  
Community Involvement  
Habitat and Enhancement Branch  
Fisheries and Oceans Canada  
360 – 555 West Hastings Street  
Vancouver, B.C. V6B 5G3