

**PACIFIC REGION**

**EXPLORATORY  
FISHERY GUIDELINES**

**PINK AND SPINY  
SCALLOP BY TRAWL**

**AUGUST 1, 2010 TO  
JULY 31, 2011**



Fisheries and Oceans    Pêches et Océans  
Canada                            Canada

**Canada**

*This Exploratory Harvest Guideline is intended for general purposes only. Where there is a discrepancy between the Guideline and the Fisheries Act and Regulations, the Act and Regulations are the final authority. A description of Areas and Subareas referenced in this Guideline can be found in the Pacific Fishery Management Area Regulations.*

## TABLE OF CONTENTS

1.	CONTACTS .....	2
2.	FISHERIES AND OCEANS CANADA INTERNET SITE .....	3
3.	GLOSSARY .....	3
4.	GOALS AND OBJECTIVES .....	4
5.	BACKGROUND.....	4
5.1.	Commercial Harvest .....	5
5.2.	First Nations Food, Social and Ceremonial Harvest.....	6
5.3.	Recreational Fishing .....	6
6.	MANAGEMENT AND ASSESSMENT SUMMARY .....	6
7.	OPEN TIMES AND HARVEST AREAS .....	7
8.	CLOSURES .....	8
8.1.	Permanent Area Closures.....	8
8.2.	Biotoxin and Contamination Closures .....	12
8.3.	Refugia.....	14
9.	LICENSING REQUIREMENTS .....	14
9.1.	Licensing.....	14
9.2.	Licence Eligibility.....	14
9.3.	Photo Identification.....	15
10.	CONTROL AND MONITORING OF HARVEST ACTIVITIES .....	15
10.1.	Gear.....	15
10.2.	Depth.....	15
10.3.	Size Limits .....	15
10.4.	Area Quotas .....	15
10.5.	Oral Reports .....	15
10.6.	Delivery, Handling and Tagging Requirements .....	16
10.7.	Catch and Fishing Data.....	16
10.8.	Biological Sampling.....	18
11.	ENFORCEMENT .....	18
12.	FISHERIES IN THE FUTURE.....	18
13.	REFERENCES .....	19
14.	APPENDICES.....	19

## 1. CONTACTS

### **OBSERVE, RECORD, AND REPORT (800) 465-4336**

Fisheries Information and Shellfish Contamination Closure Update (24 Hours) (866) 431-3474  
or (604) 666-2828

#### **Resource Management**

Regional Shellfish Co-ordinator (604) 666-3869

Lead Fishery Manager Juanita Rogers (250) 756-7268

Regional Recreational Co-ordinator Devona Adams (604) 666-3271

North Coast (Areas 1 through 10) General inquiries (250) 627-3499

417 2nd Avenue West, Prince Rupert, B.C. V8J 1G8 Fax (250) 627-3427

Resource Management Biologist Pauline Ridings (250) 627-3014

Resource Manager - First Nations Fisheries Karen Kimura-Miller (250) 627-3020

Resource Manager - Recreational Fisheries Mark Reagan (250) 627-3409

South Coast (Areas 11 through 27 & 29-5) General Inquiries (250) 756-7270

3225 Stephenson Point Road, Nanaimo, B.C. V9T 1K3 Fax (250) 756-7162

Resource Management Biologist Juanita Rogers (250) 756-7268

Resource Manager - Comox Dave Fogtmann (250) 339-3799

Resource Manager - First Nations Fisheries Jonathan Joe (250) 756-7243

Resource Manager - Recreational Fisheries Bill Shaw (250) 756-7152

Lower Fraser (Areas 28 and 29) General Inquiries (604) 666-8266

Unit 3, 100 Annacis Parkway, Delta, B.C. V3M 6A2 Fax (604) 666-7112

Resource Management Biologist Bridget Ennevor (604) 666-6390

#### **Science**

Marine Ecosystems and Aquaculture Division Ken Fong (250) 756-7368

Pacific Biological Station Maria Surry (250) 756-7210

Hammond Bay Road, Nanaimo, B.C. V9T 6N7 Leslie Barton (250) 756-7306

#### **Oceans**

Oceans, Habitat, and Enhancement Kate Ladell (604) 666-1089

#### **Aquaculture**

Regional Shellfish Aquaculture Advisor Kerry Marcus (250) 754-0210

#### **Canadian Food Inspection Agency (CFIA)**

Molluscan Shellfish Program Specialist Hanna Boehmer (604) 666-3578

Fish Inspection Directorate

2250 Boundary Road, Burnaby, B.C. V5M 4L9

#### **Environment Canada**

Growing Water Quality Classification and Surveys Walter Hajen (604) 666-2947

### **West Coast Scallop Harvesters Association**

President Linda Richards (250) 285-2881

### **B.C. Ministry of Environment**

Oceans and Marine Fisheries Branch Dennis Chalmers (250) 953-3423

### **WorkSafe BC**

Occupational Safety Officer, Victoria Mike Ross (250) 881-3419

## **2. FISHERIES AND OCEANS CANADA INTERNET SITE**

Pacific Region Internet site:

[www.pac.dfo-mpo.gc.ca/](http://www.pac.dfo-mpo.gc.ca/)

Shellfish Contamination Closures:

[www.pac.dfo-mpo.gc.ca/PSP](http://www.pac.dfo-mpo.gc.ca/PSP)

Scallop page:

[www.pac.dfo-mpo.gc.ca/ops/fm/shellfish/scallop/default\\_e.htm](http://www.pac.dfo-mpo.gc.ca/ops/fm/shellfish/scallop/default_e.htm)

Centre for Scientific Advice, Pacific (CSAP) – formerly Pacific Science Advice Review Committee (PSARC):

[www.pac.dfo-mpo.gc.ca/sci/advice\\_e.htm](http://www.pac.dfo-mpo.gc.ca/sci/advice_e.htm)

Links to Acts, Regulations, and Pacific Fishery Management Area definitions:

[www.pac.dfo-mpo.gc.ca/ops/fm/toppages/actreg\\_e.htm](http://www.pac.dfo-mpo.gc.ca/ops/fm/toppages/actreg_e.htm)

Pacific Fishery Management Area and Subarea maps:

[www.pac.dfo-mpo.gc.ca/ops/fm/Areas/areamap\\_e.htm](http://www.pac.dfo-mpo.gc.ca/ops/fm/Areas/areamap_e.htm)

## **3. GLOSSARY**

Area	Defined in Section 2 of the Pacific Fishery Management Area Regulations available through the internet at: <a href="http://laws.justice.gc.ca/en/F-14/SOR-2007-77">http://laws.justice.gc.ca/en/F-14/SOR-2007-77</a>
ASP	Amnesiac Shellfish Poisoning: a toxic plankton bloom (biotoxin)
Bivalve mollusc	Shellfish with two valves that are hinged (clams, oysters, scallops, mussels).
CFIA	Canadian Food Inspection Agency
CSAP	Centre for Scientific Advice – Pacific (replaces PSARC)
CSSP	Canadian Shellfish Sanitation Program
Invertebrate	An animal without a backbone

PSHA	Pacific Scallop Harvesters Association
PSARC	Pacific Scientific Advice Review Committee (replaced by CSAP)
PSP	Paralytic Shellfish Poisoning. A toxic plankton that is ingested and concentrated by bivalve molluscs, commonly known as "red tide".
Quota	Total allowable catch. The amount of catch which may be taken from a stock, determined by analytical procedures, to achieve management objectives.
Stakeholder	People with an interest in the fisheries resources, such as recreational and commercial harvesters, processors, and non-consumptive users.
Stock Assessment	Analyses of fisheries and research data used to estimate stock abundance and health, or evaluate the effects of fishing on a stock or population and predict the reactions of populations to alternative management choices.
Subarea	Defined in Section 2 of the Pacific Fishery Management Area Regulations available through the internet at: <a href="http://laws.justice.gc.ca/en/F-14/SOR-2007-77">http://laws.justice.gc.ca/en/F-14/SOR-2007-77</a>
TAC	Total allowable catch or Quota. The amount of catch which may be taken from a stock, determined by analytical procedures, to achieve management objectives.

#### 4. GOALS AND OBJECTIVES

- To develop an understanding of the stock distribution and abundance of pink and spiny scallops and to establish scallop management and assessment units.
- To collect biological information, including age, growth, and mortality data, for use in the development of biologically based assessment and management frameworks for pink and spiny scallops.
- To develop and establish Precautionary Approach compliant reference points and harvest control rules for pink and spiny scallops.
- To develop a consultative process for the scallop trawl fishery.

#### 5. BACKGROUND

Two species of scallops, spiny scallop (*Chlamys hastata*) and pink scallop (*Chlamys rubida*) are harvested from in-shore waters in the trawl fishery.

## 5.1 Commercial Harvest

The scallop fishery began in 1982 under a commercial ZI licence that allowed for harvest of both pink and spiny scallops by dive and trawl gear. In 1993, the dive and trawl fisheries were split. The dive fishery continued under the ZI licence and a separate licence category, ZR, was created for the trawl fishery. There was no limit to the number of licences issued annually in either fishery.

Historically, there were few management controls on the commercial fishery. A minimum size limit of 55 mm measured through the longest diameter of the shell perpendicular to the hinge was in effect for both species of commercially harvested scallops and some area closures existed.

The Minister of Fisheries and Oceans Canada discontinued the commercial scallop fisheries following the 1999 fishing season because the fisheries were data limited with few management controls. In 2000, Fisheries and Oceans Canada initiated a limited experimental fishery for scallops by trawl under scientific licence to obtain important scientific information to develop a biologically-based management plan and a sustainable fishery.

In 2000, a *Framework for Pink and Spiny Scallop Fisheries off the West Coast of Canada* was presented to PSARC (Lauzier et al. 2000) and protocols for scallop dive and trawl surveys were developed based this document. In 2005 a subsequent paper was presented to PSARC which analysed data from 2000 – 2002 from the experimental scallop fisheries and provided some preliminary biological reference points as well as recommendations for the continued assessment and management of the fisheries (Lauzier et al. 2005). Both papers are available from CSAP (formerly PSARC) at (250) 756-7208 or the CSAP Internet site (see Section 2).

In recent years an average of five licences have been issued annually with three licences active. Landings have been in the order of 25,000 to 35,000 lb/year.

Since August 2007, due to legal concerns about using scientific licences for this fishery, the Department has licensed the scallop by trawl harvest using a non-transferable exploratory fishing licence. Beginning in early 2009, the Department started consultations with all stakeholders to discuss the possibility of converting to commercial licences. The consultation is ongoing. For the 2010/11 season, the Department will continue to licence the scallop by trawl fishery with a non-transferable exploratory licence.

As part of the exploratory fishery, surveys will continue to be required for each fishing location. Surveys provide the only means of estimating scallop biomass upon which a biologically based harvest quota can be based. A continuous time series of biomass surveys at harvest locations is desirable and will provide a means to study the effects of harvest and to further refine our survey protocols. Biological information will also continue to be collected to provide information on whether harvest rates are sustainable and to refine biological parameters.

To date, surveys have been conducted at:

<b>Location</b>	<b>Timing</b>
Area 14 (Baynes, Chrome, Exeter)	Spring 2002
Cape Lazo	July 2009
Elk Point	April 2010, July 2008, March 2007
Granite Point	November 2008, November 2006
Hole in the Wal	October 2009, December 2006
Moriarty Point	April 2010, July 2008, March 2007
Octopus Island	February 2008
Okisollo	November 2008, November 2007
SW Quadra Island	June 2009, March 2007
Whilby Shoals	May 2008
Willow Point	March 2008

See Section 7 for the Total Allowable Catch applied as a result of these surveys.

## **5.2 First Nations Food, Social and Ceremonial Harvest**

There is no known historical or current First Nations' harvest of pink and spiny scallop. The Department recognizes that information regarding use of pink and spiny scallops for food, social and ceremonial purposes may be incomplete. First Nations are invited to provide additional information.

## **5.3 Recreational Fishing**

Recreational fisheries for pink and spiny scallops occur in Areas 12 to 29, subject to biotoxin and sewage contamination closures. Recreational effort is thought to be low. The daily sport catch limit for pink and spiny scallops is 75 pieces and the maximum possession limit is 150 pieces. Only hand picking, by diving is permitted. No specific recreational fishing management measures have been established for this fishery.

## **6. MANAGEMENT AND ASSESSMENT SUMMARY**

- 6.1. The 2010/11 licence will be in effect from August 1, 2010 to July 31, 2011. The fishery will be authorized under an exploratory licence.
- 6.2. Hail Program – To monitor and track quotas during the 2010/11 fishing season, all licence eligibility holders must make arrangements to participate in the industry catch monitoring and hail program at their own expense. Harvesters must follow the licence conditions regarding hail requirements to the service provider prior to fishing each day and following each day's fishing. For the 2010/11 season the industry association will be providing this service on behalf of all licence holders. Please contact the president of the association Linda Richards at (250) 285-2881 to make arrangements for this service.

- 6.3. Open Areas - For areas to be opened, a biomass survey will be required in order to establish a biologically based harvest quota. For this fishing season, new quotas have been established for Elk Point and Moriarty Point. Carry-over of any unfished quota in remaining areas will be determined once 2009/10 harvest logbooks are complete. Please contact the industry association to enquire regarding the participation in additional surveys for the 2010/11 season.
- 6.4. At-sea observer coverage: During past fishing seasons some problems occurred with harvesters failing to properly hail prior to conducting fishing operations. For the 2010/11 season a licence condition has been added requiring all vessel masters to have a DFO certified at-sea observer onboard their vessel when requested to do so by the Regional Director General for the Pacific Region. Harvesters who are unable to comply with the hail requirements necessary for the monitoring of area quotas will be required to carry a certified at-sea observer on their vessel at their own expense to ensure proper monitoring of the fishery.
- 6.5. The collection of data required for stock assessment will be obtained through industry funded trawl surveys. Quotas set within this plan are subject to in-season adjustments based on new survey results.
- 6.6. All new fishing locations must undergo a habitat assessment prior to being approved by the Department for harvest opportunities.
- 6.7. Commercial quotas calculated for each fishing location will be allocated and available to all harvesters with a valid exploratory licence.
- 6.8. Overages to harvest quotas that occur in one year will be deducted from the following year's quotas.
- 6.9. All persons onboard the fishing vessel during harvesting activities must carry photo identification.

## 7. OPEN TIMES AND HARVEST AREAS

The 2010/11 exploratory fishery will open August 1, 2010 and close July 31, 2011. All Pacific Fisheries Management Subareas are **closed** by regulation from January 1 to December 31 unless opened by Variation Order. Fishing opportunities within the scallop by trawl fishery will be authorized under exploratory licence. Please note the research and permanent area closures listed in Section 8.

Harvesters are permitted to fish only in locations authorized by their exploratory licence and attached conditions. The locations identified in the following table may be assigned harvest quotas for the fishing season; however quotas are subject to change. Areas will be monitored and closed upon completion of the harvest quota. It is the responsibility of the licence holder and the vessel master to ensure that fishing is permitted at a location prior to commencement of fishing activity.

Quota not completed in a previous year may be carried over for one season. Review of final harvest logbook records for 2009/10 must be completed prior to remaining quota being determined for 2010/11. Additional fishing opportunities will be announced in-season.

Additional areas may be added in-season if surveys are completed and data can be analyzed by the Department in time to set harvest quotas for the season. Harvesters should contact the industry association for the latest information on remaining quotas.

**Licence holders are responsible for confirming that an area is not closed for biotoxin or sanitary contamination prior to each day's fishing. (See Section 8.2)**

<b><u>Fishing Location</u></b> <b><u>Opening subject to a</u></b> <b><u>survey</u></b>	<b><u>Note</u></b>	<b><u>Harvest Quota</u></b> <b>(Kg)</b> <b>(Aug 1, 2010 to</b> <b>July 31, 2011)</b>	<b><u>Harvest Quota</u></b> <b>(lb.)</b> <b>(Aug 1, 2010 to</b> <b>July 31, 2011)</b>
Cape Lazo		0	0
Elk Point	New survey	4,000	8,818
Granite Point	Carry-over to be determined	TBD	TBD
Hole in the Wall	Carry-over to be determined	TBD	TBD
Moriarty Point	New survey	5,400	11,905
Okisollo	Carry-over to be determined	TBD	TBD
Octopus Islands	Carry-over to be determined	TBD	TBD
SW Quadra	Carry-over to be determined	TBD	TBD
Wilby Shoal	Carry-over to be determined	TBD	TBD
Willow Point	Carry-over to be determined	TBD	TBD
<b>Other locations may be open if a survey is completed.</b>			

**Note - Prior to any new fishing location being approved by the Department for a biomass survey or harvest opportunities a habitat assessment of the area will be required. A new habitat assessment protocol is being developed by the Department and will require harvesters to conduct a video survey of the proposed harvest location. Fisheries Management and Habitat staff from DFO will evaluate the video to determine if trawl activity poses a risk to the benthic community.**

## **8. CLOSURES**

### **8.1 Permanent Area Closures**

#### **8.1.1 Area 13**

Discovery Passage: Subareas 13-3, 13-4, 13-5 and a portion of 13-6 Those waters of Discovery Passage bounded on the north by a straight line drawn true west from North Bluff on Quadra Island, across Seymour Narrows to a fishing boundary sign on Vancouver Island, and on the south by a line from the Cape Mudge light true west to Vancouver Island. (Marine Reserve and Research Closure)

Deep Water Bay: A portion of Subarea 13-7 inside a line from a fishing boundary sign at Separation Head to a fishing boundary sign at the north-westerly entrance to Deepwater Bay. (Salmon Holding Area)

Kelsey Bay: Subarea 13-34 (Navigational Closure)

Mitlenatch Island: As described in Area 15 Closures.

### **8.1.2 Area 14**

Hornby Island: Those waters of Lambert Channel and the Strait of Georgia, Subarea 14-7, inside a line commencing at Shingle Spit on Hornby Island, thence 239° true for 0.5 nautical miles, thence 126° true for 3.5 nautical miles, thence 64° true for 4.9 nautical miles, thence 304° true for 2.9 nautical miles, thence 213° true for 0.5 nautical miles to Cape Gurney on Hornby Island. (Marine Reserve)

Mitlenatch Island: As described in Area 15 Closures.

Upper Baynes Sound (Subarea 14-11) and Comox Harbour (Subarea 14-14) (Navigational Closure)

### **8.1.3 Area 15**

Vivian Island: Those waters of Subarea 15-2 within 0.5 nautical miles of Vivian Island, located approximately 5.0 nautical miles west of Powell River. (Marine Reserve)

Rebecca Rock: Those waters of Subarea 15-2 within 0.25 nautical miles of Vivian Rock, located 2.5 nautical miles west of Powell River. (Marine Reserve)

Dinner Rock: Those waters of Subarea 15-2 within 0.25 nautical miles of Dinner Rock, located 2.5 nautical miles south of Lund. (Marine Reserve)

Emmonds Beach: Those waters of Subarea 15-2 within 0.5 nautical miles of the unnamed reef off Emmonds Beach, located approximately 4.0 nautical miles south of Lund. (Marine Reserve)

Mitlenatch Island: Those waters of Subarea 15-2, 13-1, 13-3, and 14-13 within 1.0 nautical mile of Mitlenatch Island, located in the upper Strait of Georgia. (Marine Reserve)

Beach Gardens: Those waters of Subarea 15-2 within a 0.25 nautical mile radius of the southerly end of the Beach Gardens breakwater. (Marine Reserve)

### **8.1.4 Area 16**

Skookumchuck Narrows Provincial Park: Those waters of Skookumchuck Narrows and Sechelt Rapids in Subarea 16-9 bounded on the west by a line from a point on the foreshore at the westerly limit of Secret Bay on Sechelt Peninsula thence 50° true to a point on the foreshore on the mainland; and the east by a line from Raland Point on Sechelt Peninsula, thence 50° true to a point on the foreshore on the mainland. (Park)

Bargain Bay (Subarea 16-3), Pender Harbour (Subarea 16-4); and Head of Sechelt Inlet (Subarea 16-5) (Navigational Closure)

### **8.1.5 Area 17**

Saskatchewan and Cape Breton artificial reefs: Those waters of Subarea 17-12 within 100m of the marker buoys at the artificial reef “Saskatchewan” on the east coast of Snake Island and those waters within 100m of the marker buoys at the artificial reef “Cape Breton”. (Commercial Closure)

Ladysmith Harbour (Subarea 17-7) and Nanaimo Harbour (Subarea 17-14) (Navigational Closure)

Subarea 17-10, the eastern shore of Gabriola Island (Scallop Dive Access)

### **8.1.6 Area 18**

Subarea 18-1, north-east shore of Mayne Island (Scallop Dive Access)

Sansum Narrows, Burgoyne Bay and Maple Bay (Subareas 18-7) and Cowichan Bay (Subarea 18-8) and Fulford Harbour (Subarea 18-10) (Navigational closure for net fisheries)

Subarea 18-11, north-east shore of Saturna Island (Scallop Dive Access)

### **8.1.7 Area 19**

Victoria Harbour: Subarea 19-1 and Esquimalt Harbour, Subarea 19-2 (Navigational Closure)

Sidney Spit Marine Park: Subarea 19-6 (Park)

Saanich Inlet: Subareas 19-7 to 19-12 (Conservation).

Mackenzie artificial reef: Those waters of Subarea 19-5 within 100m of the marker buoys at the artificial reef “Mackenzie”, near Rum Island. (Commercial Closure)

Ogden Point: Those waters of Subarea 19-3 inside a line from the navigation light at the western end of the Ogden Point Causeway thence to Brotchie Ledge Light, thence to Holland Point on Vancouver Island. (Marine Reserve)

Race Rocks: Those waters of Subareas 19-3 and 20-5 within 0.5 nautical miles of Great Race Rocks. (Marine Reserve)

10 Mile Point: Those waters of Subareas 19-4 and 19-5 within 0.4 nautical miles of Cadboro Pt. navigation light. (Marine Reserve)

### **8.1.8 Area 20**

Race Rocks: Those waters of Subareas 19-3 and 20-5 within 0.5 nautical miles of Great Race Rocks. (Marine Reserve)

Botanical Beach Provincial Park: That portion of Subarea 20-3 between the lowest low water on record and the highest high water on record from San Juan Point thence

following the Vancouver Island shoreline easterly to the mouth of Tom Baird Creek. (Marine Reserve)

Pacific Rim National Park, Juan de Fuca: That portion of Subarea 20-1 between the lowest low water on record and the highest high water on record from Bonilla Light thence following the shoreline of Vancouver Island easterly to Owen Point. (Park)

#### **8.1.9 Area 23**

Pacific Rim National Park, Broken Group Islands: Those waters of the Broken Group Islands in Barkley Sound within park boundaries as shown, since 1989, on Canadian Hydrographic Service Chart 3671. (Park)

Bamfield Marine Station Research Area Closure: Those waters of Pacific Fishery Management Subareas 23-4, 23-6 and 23-7 bounded by a line commencing at the light at Whittlestone Point and running directly to the southern tip of Haines Island; from the northwestern tip of Haines Island to the southern tip of Seppings Island; from the northwestern tip of Seppings Island to Kirby Point on Diana Island; from Kirby Point directly to the northwest tip of Fry Island; from the northwestern tip of Fry Island to the nearest adjacent point on Tzartus Island; from Foucault Bluff on Tzartus Island to the northwest tip of Nanat Island; from the eastern tip of Nanat Island to the nearest adjacent point on Vancouver Island and thence along the coastline of Vancouver Island to the point of commencement. (Research Area)

Pacific Rim National Park, Grice Bay and McBey Islets: The waters of Tofino Inlet within Pacific Rim National Park including McBey Islets and Dinner Island in Tsapee Narrows, Browning Passage in Subarea 24-9 and Grice Bay west and south of Indian Island in Subarea 24-11. (Park)

#### **8.1.10 Area 26**

Checleset Bay Fishery Closure Area: Those waters of Checleset Bay within Subareas 26-7, 26-8 and 26-10 and 126-1 on the northwest coast of Vancouver Island enclosed by the coordinates 49° 59' to 50° 6.3' N and 127° 26' to 127° 39' W. (Ecological Reserve)

Kyuquot Sound Marine Communities Study Area: Consists of: Kyuquot Bay; a portion of 26-6 inside or northerly of a line from White Cliff Head to Racoon Point and identified on the Kyuquot map attached to this plan, and entrance to Crowther Channel: a portion of 26-6 on the west side of Union Island commencing at position 50° 0.4' N, 127° 19.3' W and identified on the map attached to this plan. (Research Closures)

#### **8.1.11 Area 28**

Porteau Cove: That portion of Subarea 28-4, east of a line drawn from a white fishing boundary sign located on the south shore of Porteau Cove to a white fishing boundary sign located on the north shore of Porteau Cove. (Marine Reserve)

Whytecliff Park: That portion of Subarea 28-2 bounded by a line commencing from the most southerly point of Whytecliff Park; thence in a straight line to a point located 100m east of the most southeasterly point of Whyte It.; thence following the southern shoreline

of Whyte It. at a distance of 100m to a point lying 100m from the most southwesterly point of Whyte It.; thence in a straight line to a point lying 100m west of White Cliff Point; thence following the shoreline at a distance of 100m in a northerly direction to a point 100m north of Lookout Point; thence following the shoreline at a distance of 100m in an easterly direction to a point 100m perpendicular to the most northerly point of Whytecliff Park; thence to the most northerly point of Whytecliff Park on the mainland. (Marine Reserve)

Horseshoe Bay: That portion of Subarea 28-2 bounded by a line commencing from Whytecliff Point, thence in a straight line to the most southerly point of Bowyer Island, thence in a straight line 112 degrees true to the mainland. (Navigational Closure)

False Creek: Subarea 28-8. (Navigational Closure)

Burrard Inlet: Subarea 28-10. (Navigational Closure)

### **8.1.12 Area 29**

Subareas 29-4 and 29-5: (Scallop Dive Access)

## **8.2 Biotoxin and Contamination Closures**

Closures may be implemented on short notice in the event of changes to contamination status, PSP or other biotoxin events. Licence holders, vessel masters, and harvesters are reminded that:

- It remains the responsibility of the *vessel master* to ensure that an area is not closed for harvest due to Sanitary or Biotoxin Contamination. Fishing in a closed area is an offence under the *Fisheries Act*. Consumption of product harvested from within a closed area poses a serious health risk.
- Prior to commencement of fishing, the vessel master must take care to confirm that an area is open for harvesting either through the DFO website at:  
[www.pac.dfo-mpo.gc.ca/ops/fm/shellfish/Biotoxins/closures/default\\_e.htm](http://www.pac.dfo-mpo.gc.ca/ops/fm/shellfish/Biotoxins/closures/default_e.htm)  
or the toll-free information line at 1-866-431-3474, or by contacting a local DFO office directly. Contact information is available in the Contacts section of the Exploratory Fishery Guidelines.
- Information may also be available through weekly broadcasts over a commercial or marine radio station (“the weather channel”).

### **8.2.1 Paralytic Shellfish Poisoning (PSP) or Domoic Acid (ASP)**

With the exception of management Subarea 1-5 and portions of Area 7, the entire north coast (Areas 1 to 11 inclusive) is closed for the harvest of bivalves. This closure is due to a high risk of PSP and ASP, and the incomplete coverage of biotoxin monitoring and water quality surveys in north coast areas. For other areas, closures will be invoked when elevated levels of biotoxins are detected.

Scallop species retain PSP toxins longer than many other bivalve species, such as clams or oysters. As such, re-opening an area to scallops following a PSP closure may be

delayed pending receipt and analysis by CFIA of scallop samples from proposed fishing areas.

**For information on current biotoxin closures either:**

- **call the Fisheries Information and Shellfish Contamination Closure line toll free (866) 431-FISH (3474) or (604) 666-2828 (Lower Mainland);**
- **check the Fisheries and Oceans Canada internet site at: [www.pac.dfo-mpo.gc.ca/PSP](http://www.pac.dfo-mpo.gc.ca/PSP); or**
- **check with the local Fisheries and Oceans Canada office.**

Harvest areas may be closed due to a reduced PSP and ASP sampling program. CFIA continues to establish partnership programs with user groups to undertake the biotoxin sampling. In order to maintain harvest opportunities, user groups are invited to contact CFIA at the number listed in Section 1 to discuss monitoring plan development, design, and implementation.

### **8.2.2 Sanitary Contaminated Closures**

Shellfish may not be harvested for direct marketing from closed contaminated areas except by special permit licence under the *Management of Contaminated Fisheries Regulations*. There are both seasonal and permanent sanitary contamination closures. Descriptions and maps of contaminated closures may be found at the following Fisheries and Oceans Canada Internet site:

[www.pac.dfo-mpo.gc.ca/PSP](http://www.pac.dfo-mpo.gc.ca/PSP)

**A copy of this list may also be obtained from the resource managers (see the Contacts section). Sanitary closures are amended annually in April and November, and may also be amended in-season. Consequently, harvesters are advised to check the Internet, prior to fishing in an area, to ensure that they have the most recent contamination closure information.**

Permanent bivalve harvesting closures are in place for Canadian fisheries waters of the Pacific Ocean within:

- a) 300 m radius around industrial, municipal and sewage treatment plant outfall discharges;
- b) 125 m radius of any marina, ferry wharf, finfish net pen, and, subject to subsection (c), any floating living accommodation facility; and
- c) 25 m of any floating living accommodation facility located within a shellfish aquaculture tenure where a zero-discharge waste management plan is a condition of the Provincial aquaculture licence and is approved by the Regional Interdepartmental Committee.

### **8.2.3 Harvesting Bivalves in the Vicinity of Waste Water Treatment Plants**

Concerns have been raised to improve processes where bivalve shellfish are harvested near waste water treatment plants. Increased controls were implemented starting in 2009 to prevent shellfish harvest in areas where a planned or unplanned release or discharge at a waste water treatment plant may potentially cause contamination.

Conditional Management Plans may be developed on a priority basis to manage harvest activities along with improved detection, notification, and response to potential release or discharge events at a waste water treatment plant.

The Department will be consulting with shellfish harvesters in areas where Conditional Management Plans must be developed.

For further information, contact Elysha Gordon at (250) 756-7192.

### **8.3 Refugia**

The Department is investigating the establishment of closed areas to serve as scallop refugia or no harvest “control” sites. Benefits of establishing such closures would include the potential for comparative studies of harvest rates for use in stock assessments and in addition such areas would serve as potential sources of spawning recruitment. Input from experienced scallop harvesters will be sought in identifying these areas.

## **9. LICENSING REQUIREMENTS**

### **9.1 Licensing**

A non-transferable scallop by trawl exploratory fishing licence will be in effect for the fishing season. Licence eligibility holders may not transfer eligibility for this licence.

The licence eligibility holder must sign the application form. If the licence eligibility holder is a company or First Nation group, only an authorised signing authority may sign the application.

Prior to annual licence issue, licence eligibility holder(s) must:

- a) Ensure any Ministerial conditions placed on the licence eligibility are met. Ensure any conditions of the previous year’s licence such as completion and submission of logbooks are met and accepted.
- b) Designate a registered commercial fishing vessel. Only one licence may be may be designated for each vessel.

Fisheries and Oceans Canada reserves the right to implement vessel length restrictions at a future date.

### **9.2 Licence Eligibility**

To ensure conservation objectives can be met within the historical harvest areas, eligibility criteria have been established for the issuance of exploratory licences. This measure has been taken to control fishing capacity during the experimental phase of this fishery. Exploratory licences have been issued to scallop harvesters with past recorded landings in the period 1995 to 1999, or to those persons who have participated with their vessels in recent scientific surveys with the Department during the period of 2000 to 2002, in order to conduct scallop biomass surveys along the coast. In addition, applications from First Nations communities will be accepted, although there has been no interest to date.

Licences will be issued only to those applicants who have demonstrated they have met gear standards and who have demonstrated that they have contributed a minimum effort towards surveys and quota development.

### **9.3 Photo Identification**

All persons onboard the fishing vessel during harvesting activities must carry photo identification.

## **10. CONTROL AND MONITORING OF HARVEST ACTIVITIES**

### **10.1 Gear**

The size of the trawl net is limited to a maximum width of two metres. Harvesters are required to have all gear approved by the Department prior to fishing and receiving a licence. Gear will only be approved if it meets standards for eliminating by-catch and habitat impacts set by DFO Science. Testing of new gear will be required at the harvester's expense.

### **10.2 Depth**

Scallop trawl harvesters are required to fish at depths greater than 20 m below chart datum.

### **10.3 Size Limits**

The minimum size limit for scallop trawl for pink and spiny scallops is 48 mm shell height, measured perpendicular to the hinge.

There are some indications that management of the fishery by size limit alone may be inadequate in preventing localized stock depletions. Except during collection of biological samples authorized by scientific licence, harvesters are requested to return some of the largest scallops to the water unharmed to provide additional spawning potential to the population.

### **10.4 Area Quotas**

Quotas will only be allocated for surveyed areas. If a quota was not all harvested in the previous year the unharvested quota may be carried over for one season.

Quotas may be adjusted in-season following the completion and analysis of any surveys completed. All surveys should be coordinated through the industry association.

### **10.5 Oral Reports**

Harvesters are responsible for making arrangements with a Fisheries and Oceans Canada approved service provider at their own expense for the following reports. Harvesters must provide a written letter showing that these services have been arranged prior to the Department issuing a licence for the 2010/11 fishing season.

### **10.5.1 Notification prior to commencement of fishing**

Vessel masters must hail into a fishing location prior to starting any harvesting and ensure the area is open to fishing and quota is remaining. For the 2010/11 fishing season the hail program will be run by the West Coast Scallop Trawl Association. A contact phone number is provided in the contact section of this plan.

### **10.5.2 Daily Hail of Harvest**

Vessel masters must hail their harvest information daily and ensure that there is quota remaining before continuing to fish. Weekly landing summaries are required to be submitted to the Department.

## **10.6 Delivery, Handling and Tagging Requirements**

All scallops must be delivered live and whole to a federally registered shellfish plant. The shucking of scallops on board a vessel is not permitted. The direct sale of scallops to the public, restaurants, or retail stores is prohibited.

For the storage of scallops, all containers must be in clean condition prior to use and the wet storage of scallops on board, or over the side of any vessel, is not permitted. Holding (wet storage) of scallops at the harvest site is an acceptable practice providing that the harvest site is in approved shellfish growing waters.

All containers or sacks containing scallops must be **individually tagged** with the following information:

- a) Subarea and location of harvest (e.g. Area 15-2, Savary Island).
- b) Date of harvest.
- c) Name and Vessel Registration Number (VRN) of the vessel.

## **10.7 Catch and Fishing Data**

### **10.7.1 Harvest Logs**

The licence holder is responsible for the provision and maintenance of an accurate record, a “log”, of daily harvest operations. This log must be completed and both a paper and electronic copy submitted in an approved format as defined by Fisheries and Oceans Canada Marine Ecosystems and Aquaculture Division’s Shellfish Data Unit.

The licence holder is also responsible for reporting accurate latitude/longitude on harvest logs in the appropriate field. For those vessels not equipped with the appropriate electronic instruments, harvest location co-ordinates must be read from a marine chart and entered in the harvest log.

The licence holder may make arrangements with a service provider to provide the approved format logbook, coding and keypunch service, thus complying with the requirements for paper and electronic copies and for location information.

The original white page copy of the log and the electronic copy must be forwarded within **28 days following the end of each month in which fishing occurred**. In the event no fishing has occurred during the licence period, a **“nil” report** (a page from the harvest log signed by the licence holder, identifying the vessel, licence tab number and licence

period, with “nil” entered in the body of the log in place of catch information), shall be sent within 28 days following the close of the fishery to indicate that no fishing occurred. Harvest log information must be sent to:

Fisheries and Oceans Canada  
Shellfish Data Unit  
Pacific Biological Station  
Hammond Bay Road  
Nanaimo, B.C. V9T 6N7

Phone: (250) 756-7022 or (250) 756-7306

As an alternative to harvest log provision through a service provider, the licence holder may provide a paper copy log in the same form and providing the same particulars as shown in the fishing log sample attached hereto, see Appendix 1. The licence holder must also provide an electronic copy, which is required to be a true and accurate transcription of the hard copy data, delivered on a Windows XP (or earlier version) compatible 3.5” disk or mini CD. Disks will remain the property of Fisheries and Oceans Canada. The electronic copy must be the equivalent information in a database table of approved design created by any of the following database management tools: Access XP (or earlier version), FoxPro, Paradox or dBase III or IV.

Contact the Shellfish Data Unit at the above address to obtain the full requirements and acceptable data formats for supplying harvest log and electronic data in a format that meets the Conditions of Licence. The hard copy of the harvest logs, as well as the completed electronic copy must be forwarded within 28 days following the end of each month in which fishing occurred. This information must be sent to the above address.

**Catch information must be recorded in the harvest log by midnight of the day of fishing.** The logbook must be kept aboard the licensed vessel. Logbooks must be produced for examination on demand of a fishery officer, guardian, or a fishery observer designated under the *Fisheries Act*.

**FISHERIES AND OCEANS CANADA WISHES TO REMIND HARVESTERS THAT HARVEST LOGS MUST BE COMPLETED ACCURATELY DURING FISHING OPERATIONS AND SUBMITTED TO THE DEPARTMENT IN ACCORDANCE WITH THE TIMING SET OUT IN CONDITIONS OF LICENCE. DELAY OF COMPLETION OR SUBMISSION OF LOGS IS A VIOLATION OF A CONDITION OF LICENCE.**

To be eligible for licence renewal, all catch information, including harvest logs, incidental catch and 'fish slips' must be in full compliance with the Conditions of Licence.

#### **10.7.2 Confidentiality of Harvest Data**

Harvest data, including fishing location data supplied through latitude/longitude coordinates, collected under the Harvest Logbooks for Shellfish Fisheries programs, are collected for use by Fisheries and Oceans Canada in the proper assessment, management, and control of the fisheries. Upon receipt by the Department of harvest log data and/or fishing location information, supplied by the harvester in accordance with Conditions of Licence, Section 20(1)(b) of the *Access to Information Act* prevents the Department from

disclosing to a third party, records containing financial, commercial, scientific or technical information that is confidential information. Further, Section 20(1)(c) of the Act prevents Fisheries and Oceans Canada from giving out information, the disclosure of which could reasonably be expected to result in material financial loss or could reasonably be expected to prejudice the competitive position of the licence holder.

### **10.7.3 Fish Slip Requirements**

It is a condition of this licence that an accurate written report shall be furnished on a fish slip of all fish and shellfish caught under the authority of this licence. A report must be made even if the fish and shellfish landed are used for bait, personal consumption, or otherwise disposed. The written report shall be posted not later than **seven days after the offloading** and sent to:

Fisheries and Oceans Canada  
Regional Data Unit  
Suite 200, 401 Burrard Street  
Vancouver, B.C. V6C 3S4  
(604) 666-3784

Fish slip books may be purchased at the above address.

## **10.8 Biological Sampling**

Sub-samples of the commercial catch or the collection of biological samples in addition to those required during stock assessment surveys may be required at various times throughout the duration of this plan. Samples will provide the Department with information on size, age, and sex of scallops stocks being harvested. This biological information is an important component of the stock assessment program.

## **11. ENFORCEMENT**

Fisheries and Oceans Canada has the responsibility to enforce the *Fisheries Act* and associated regulations, to address conservation, health and safety issues and to maintain proper management and control of the various fisheries.

Users of the resource have a responsibility to report violations. Any suspected or actual fisheries, wildlife, or pollution violations can be quickly and discretely reported to the appropriate enforcement officer by using the toll free Observe, Record, and Report hotline. This toll free number is available 24 hours a day. Confidentiality is assured.

**OBSERVE, RECORD AND REPORT - 1-800-465-4336**

**Or 604 607-4186 (Lower Mainland)**

Enforcement enquiries can also be directed to the local field offices during regular office hours.

## **12. FISHERIES IN THE FUTURE**

Following the exploratory fishery period and a review of the assessment and management framework, if it is believed that the species or stocks can sustain a commercially viable fishery

able to fund its own management and assessment programs, an Integrated Fisheries Management Plan (IFMP) may be developed. The Department has been consulting with all stakeholders to discuss the possibility of converting the fishery to commercial licences. If an IFMP is considered in the future, the Department may seek to arrange for cost recovery to help fund programs. **Holding a licence for the 2010/11 fishing season will not guarantee the licence holder any eligibility for a commercial licence in the future. The Department also anticipates that additional licences will be considered in the future.**

Development of fisheries in new areas, not historically fished, may be considered, and will follow the phased approach to new and developing fisheries and the framework provided by Lauzier et al. (2000, 2005). Any exploratory fisheries in any new areas should be preceded by an initial biomass estimate, which will provide a “virgin” or “initial” biomass, required for setting precautionary quotas. This will also provide valuable stock assessment information, including information on natural size and age structure of pink and spiny scallops.

### 13. REFERENCES

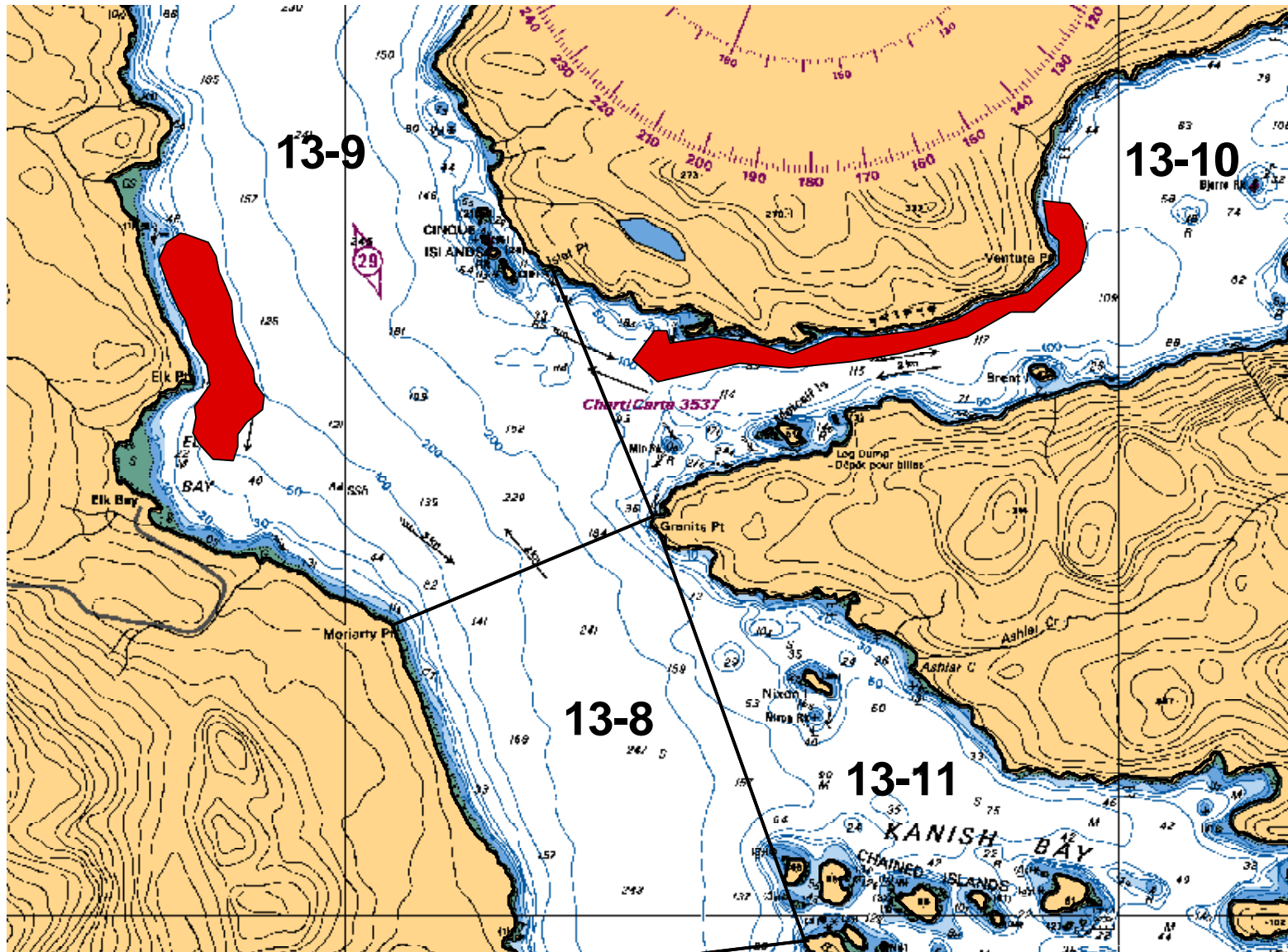
- Bourne, N.F. 1987. Scallops *in* Status of invertebrate fisheries off the Pacific Coast of Canada (1985/86). Can. Tech. Rep. Fish. Aquat. Sci. No. 1576. P. 107-112.
- Bourne, N.F. and R. Harbo. 1987. Size limits for pink and spiny scallops *In* Status of invertebrate fisheries off the Pacific Coast of Canada. Can. Tech. Rep. Fish. Aquat. Sci. No. 1576. p113-122.
- Lauzier, R., S. Campagna, and R. Hinder. 2000. Framework for pink (*Chlamys rubida*) and spiny (*C. hastata*) scallop fisheries in waters off the west coast of Canada. Canadian Stock Assessment Secretariat Research Document 2000/123.
- Lauzier, R.B. and G. Parker. 1999. A review of the biology and fisheries of the pink scallop and spiny scallop. Canadian Stock Assessment Secretariat Research Document 99/153.
- Lauzier, R.B. Walther, L.C., Hajas, W., Lessard, J., and Wylie E.S. 2005. Progressing to a scientifically-based assessment and management system for renewed commercial pink and spiny scallop fisheries off the British Columbia coast. Canadian Stock Assessment Secretariat Research Document 2005/087.

### 14. APPENDICES

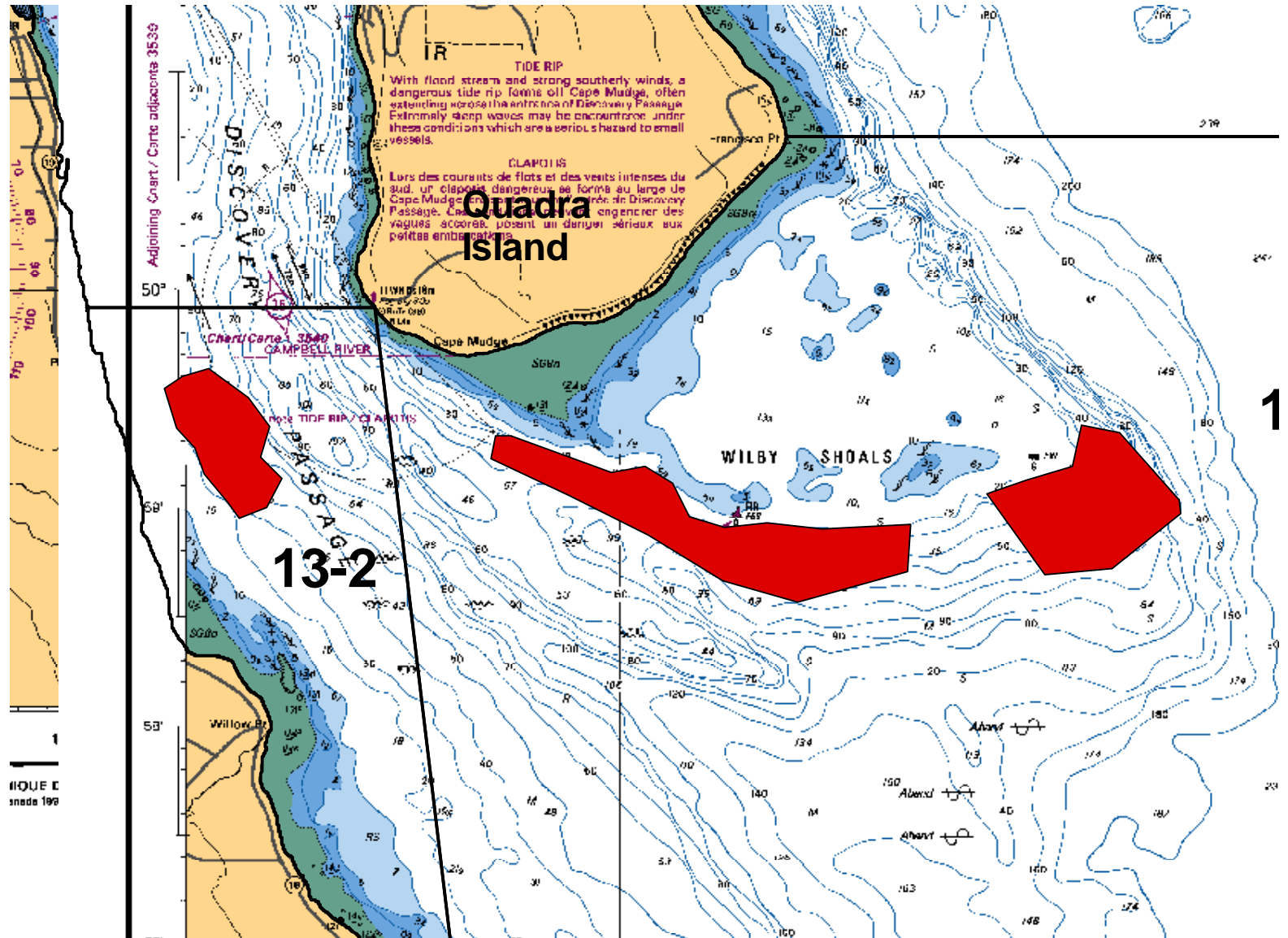
- Appendix 1: Maps of Fishing Locations
- Appendix 2: Fishing Vessel Safety

Appendix 1 – Maps of Fishing Areas

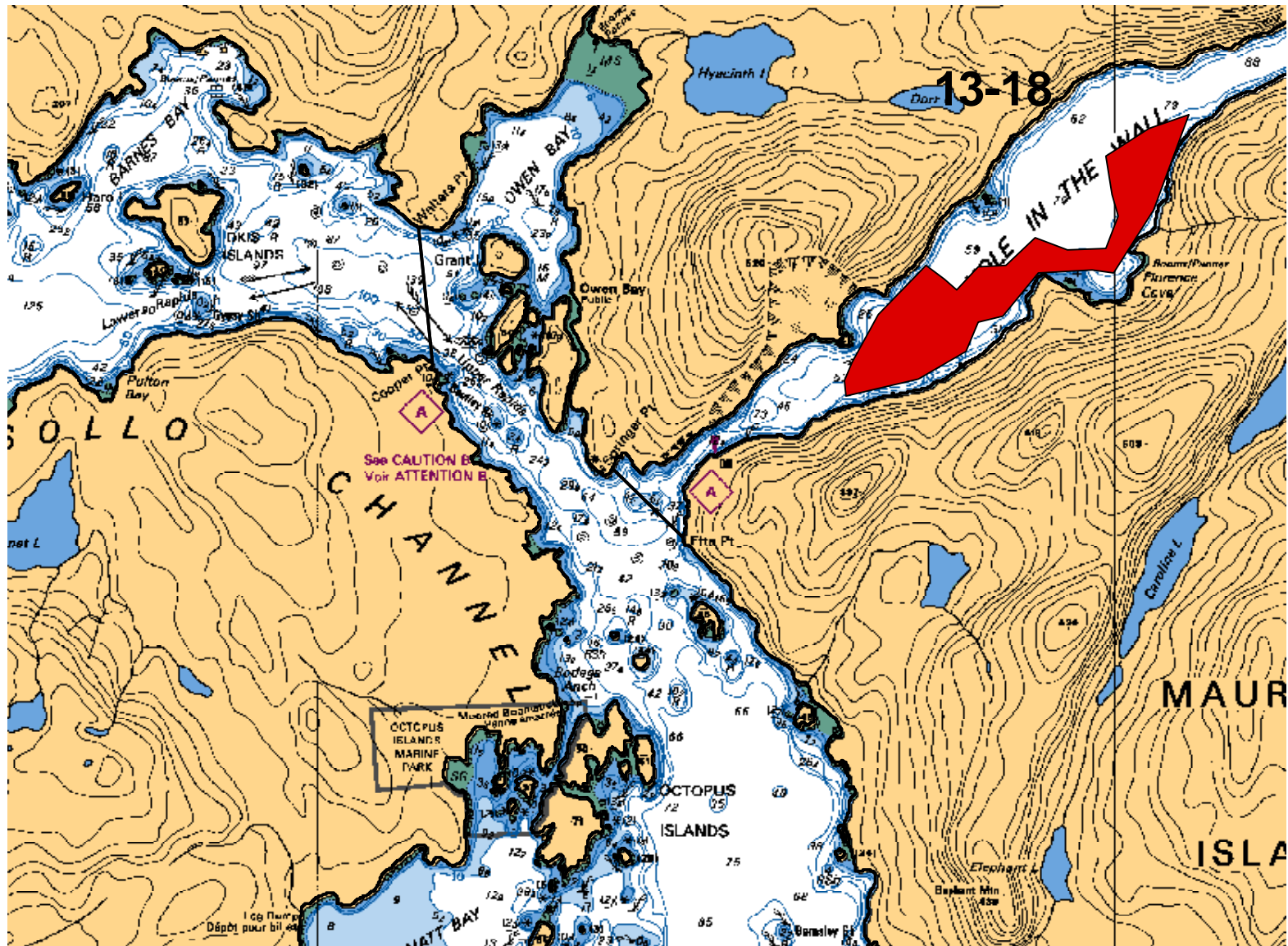
Map 1 – Biomass Survey Location for Elk Point and Okisollo Management Areas



Map 2 – Biomass Survey Location for Wilby and Willow Point Management Areas



Map 3 - Biomass Survey Location for the Hole in the Wall Management Area



## Appendix 2: Fishing Vessel Safety

Vessel owners and masters have a duty to ensure the safety of their crew and vessel. Adherence to safety regulations and good practices by owners, masters, and crew of fishing vessels will help save lives, prevent vessel damage, and protect the environment. All fishing vessels must be in a seaworthy condition and maintained as required by Transport Canada (TC), WorkSafeBC, and other applicable agencies. Vessels subject to inspection should ensure that the certificate of inspection is valid for the area of intended operation.

In the federal government, responsibility for shipping, navigation, and vessel safety regulations and inspections lies with Transport Canada (TC); emergency response with the Canadian Coast Guard (CCG) and DFO has responsibility for management of the fisheries resources. In B.C., WorkSafeBC also regulates health and safety issues in commercial fishing. This includes requirements to ensure the health and safety of the crew and safe operation of the vessel. DFO (Fisheries and Aquaculture Management (FAM) and CCG) and TC through an MOU have formalized cooperation to establish, maintain, and promote a safety culture within the fishing industry.

Before leaving on a voyage the owner, master or operator must ensure that the fishing vessel is capable of safely making the passage. Critical factors for a safe voyage include the seaworthiness of the vessel, vessel stability, having the required safety equipment in good working order, crew training, and knowledge of current and forecasted weather conditions. As safety requirements and guidelines may change, the vessel owner, crew, and other workers must be aware of the latest legislation, policies, and guidelines prior to each trip.

There are many useful tools available for ensuring a safe voyage. These include:

- Education and Training Programs
- Marine Emergency Duties
- Fish Safe Stability Education
- First Aid
- Radio Operators Course
- Fishing Masters Certificates
- Small Vessel Operators Certificate

Publications:

- Transport Canada Publication TP 10038 '*Small Fishing Vessel Safety Manual*'. The manual can be obtained at Transport Canada Offices from their website at:  
[www.tc.gc.ca/MarineSafety/Tp/Tp10038/tp10038e.htm](http://www.tc.gc.ca/MarineSafety/Tp/Tp10038/tp10038e.htm)
- Gearing Up for Safety – WorkSafeBC
- Safe At Sea DVD Series – Fish Safe
- Stability Handbook – Fish Safe and Measuring Stability –DVD

For further information see:

[www.tc.gc.ca/marine/menu.htm](http://www.tc.gc.ca/marine/menu.htm)

## **1. IMPORTANT PRIORITIES FOR VESSEL SAFETY**

There are three areas of fishing vessel safety that should be considered a priority. These are: vessel stability, emergency drills, and cold water immersion.

### **1.1. Fishing Vessel Stability**

Vessel stability is paramount for safety. Care must be given to the stowage and securing of all cargo, skiffs, equipment, fuel containers and supplies, and also to correct ballasting. Fish harvesters must be familiar with their vessel's centre of gravity, the effect of liquid free surfaces on stability, loose water, or fish on deck, loading and unloading operations and the vessel's freeboard. Know the limitations of your vessel; if you are unsure contact a reputable naval architect, marine surveyor or the local Transport Canada Marine Safety Office.

Fishing vessel owners are required to develop detailed instructions addressing the limits of stability for each of their vessels. The instructions need to be based on a formal assessment of the vessel by a qualified naval architect and include detailed safe operation documentation kept on board the vessel. Examples of detailed documentation include engine room procedures, maintenance schedules to ensure watertight integrity, and instructions for regular practice of emergency drills.

### **1.2. Emergency Drill Requirements**

The master must establish procedures and assign responsibilities to each crew member for emergencies such as crew member overboard, fire, flooding, abandoning ship, and calling for help.

The Crewing Regulation under the Canada Shipping Act (CSA) states that as of July 30th 2002 all seafarers, including fish harvesters, must have a Basic Safety Certificate (MED A1 or A3 depending upon vessel and operating waters) within 6 months of becoming a crewmember, regardless of time at sea. The MED A1 is a three day course, and must be taken by all crew regardless of duty station.

MED provides a basic understanding of the hazards associated with the marine environment; the prevention of shipboard incidents; raising and reacting to alarms; fire and abandonment situations; and the skills necessary for survival and rescue.

### **1.3. Cold Water Immersion**

Drowning is the number one cause of death in B.C.'s fishing industry. Cold water is defined as water below 25 degrees Celsius, but the greatest effects occur below 15 degrees. BC waters are usually below 15 degrees. The effects of cold water on the body occur in four stages: cold shock, swimming failure, hypothermia, and post-rescue collapse. Know what to do to prevent you or your crew from falling into the water and what to do if that occurs. More information is available in the WorkSafe Bulletin *Cold Water Immersion* (available from the WorkSafeBC website).

## 1.4. Other Issues

### 1.4.1. Weather

Vessel owners and masters are reminded of the importance of paying close attention to current weather trends and forecasts during the voyage. Marine weather information and forecasts can be obtained on VHF channels 21B, Wx1, Wx2, Wx3, or Wx4. Weather information is also available from Environment Canada website at:

[www.weatheroffice.ec.gc.ca/marine/region\\_03\\_e.html](http://www.weatheroffice.ec.gc.ca/marine/region_03_e.html)

### 1.4.2. Emergency Radio Procedures

Vessel owners and masters should ensure that all crew are able to activate the Search and Rescue (SAR) system early rather than later by contacting the Canadian Coast Guard (CCG). It is strongly recommended that all fish harvesters carry a registered 406 MHz Emergency Position Indicating Radio Beacon (EPIRB). These beacons should be registered with the National Search and Rescue secretariat. When activated, an EPIRB transmits a distress call that is picked up or relayed by satellites and transmitted via land earth stations to the Joint Rescue Co-ordination Centre (JRCC), which will task and co-ordinate rescue resources.

Fish harvesters should monitor VHF channel 16 or MF 2182 Khz and make themselves and their crews familiar with other radio frequencies. All crew should know how to make a distress call and should obtain their restricted operator certificate from Industry Canada. However, whenever possible, masters should contact the nearest Canadian Coast Guard (CCG) Marine Communications and Traffic Services (MCTS) station (on VHF channel 16 or MF 2182 kHz) prior to a distress situation developing. Correct radio procedures are important for communications in an emergency. Incorrect or misunderstood communications may hinder a rescue response.

Since August 1, 2003 all commercial vessels greater than 20 metres in length are required to carry a Class D VHF Digital Selective Calling (DSC) radio. A registered DSC VHF radio has the capability to alert other DSC equipped vessels in your immediate area and MCTS that your vessel is in distress. Masters should be aware that they should register their DSC radios with Industry Canada to obtain a Marine Mobile Services Identity (MMSI) number or the automatic distress calling feature of the radio may not work. For further information see the Industry Canada site at:

[www.ic.gc.ca/eic/site/ic1.nsf/eng/h\\_00014.html](http://www.ic.gc.ca/eic/site/ic1.nsf/eng/h_00014.html)

A DSC radio that is connected to a GPS unit will also automatically include your vessel's current position in the distress message. More detailed information on MCTS and DSC can be obtained by contacting a local Coast Guard MCTS centre (located in Vancouver, Victoria, Prince Rupert, Comox, and Tofino) **or** from the Coast Guard website:

[www.pacific.ccg-gcc.gc.ca](http://www.pacific.ccg-gcc.gc.ca)

### 1.4.3. Collision Regulations

Fish harvesters must be knowledgeable of the *Collision Regulations* and the responsibilities between vessels where risk of collision exists. Navigation lights must be kept in good working order and must be displayed from sunset to sunrise and during all

times of restricted visibility. To help reduce the potential for collision or close quarters situations which may also result in the loss of fishing gear, fish harvesters are encouraged to monitor the appropriate local Vessel Traffic Services (VTS) VHF channel, when travelling or fishing near shipping lanes or other areas frequented by large commercial vessels. Vessels required to participate in VTS include:

- a) every ship twenty metres or more in length,
- b) every ship engaged in towing or pushing any vessel or object, other than fishing gear,
- c) where the combined length of the ship and any vessel or object towed or pushed by the ship is forty five metres or more in length; or
- d) where the length of the vessel or object being towed or pushed by the ship is twenty metres or more in length.

Exceptions include:

- a) a ship towing or pushing inside a log booming ground,
- b) a pleasure yacht *less than* 30 metres in length, and
- c) a fishing vessel that is *less than* 24 metres in length and not *more than* 150 tons gross.

More detailed information on VTS can be obtained by calling (604) 775-8862 or from Coast Guard website:

[www.pacific.ccg-gcc.gc.ca/mcts-sctm/index\\_e.htm](http://www.pacific.ccg-gcc.gc.ca/mcts-sctm/index_e.htm).

#### **1.4.4. Buddy System**

Fish harvesters are encouraged to use the buddy system when transiting, and fishing as this allows for the ability to provide mutual aid. An important trip consideration is the use of a sail plan which includes the particulars of the vessel, crew, and voyage. The sail plan should be left with a responsible person on shore or filed with the local MCTS. After leaving port the fish harvester should contact the holder of the sail plan daily or as per another schedule. The sail plan should ensure notification to JRCC when communication is not maintained which might indicate your vessel is in distress. Be sure to cancel the sail plan upon completion of the voyage.

## **2. WORKSAFEBBC**

Commercial fishing is legislated by the requirements for diving, fishing and other marine operations found in Part 24 of the Occupational Health and Safety Regulation (OHSR). Many general hazard sections of the OHSR also apply. For example, Part 8: Personal Protective Clothing and Equipment addresses issues related to safety headgear, safety foot wear and personal floatation devices. Part 15 addresses issues on rigging, Part 5 addresses issues of exposure to chemical and biological substances, and Part 3 addresses training of young and new workers, first aid, and accident investigation issues. Part 3 of the Workers Compensation Act (WCA) defines the roles and responsibilities of owners, employers, supervisors, and workers.

The regulations do change and are updated from time to time, so check with WorkSafeBC for up-to-date versions. The OHSR and the WCA are available from the Provincial Crown Printers or by visiting the WorkSafeBC website:

[www.worksafebc.com](http://www.worksafebc.com)

For further information, contact an Occupational Safety Officer:

Shane Neifer	Terrace	(250) 615-6640
Pat Olsen	Richmond	(604) 244-6477
Mark Lunny	Courtney	(250) 334-8732

or the Focus Sector Manager for fishing:

Bruce Clarke	Prince George	(250) 612-3708
--------------	---------------	----------------

For information on projects related to commercial fishing contact Ellen Hanson (604) 233-4008 or Toll Free 1-888 621-7233 ext. 4008 or by email: [Ellen.Hanson@worksafebc.com](mailto:Ellen.Hanson@worksafebc.com).

### **3. FISH SAFE BC**

Fish Safe is coordinated by Gina Johansen and directed by the Fish Safe Advisory Committee (membership is open to all interested in improving safety on board). The advisory committee meets quarterly to discuss safety issues and give direction to Fish Safe in the development of education and tools for fish harvesters.

Vessel masters and crew are encouraged to become more knowledgeable regarding vessel stability. Fish Safe BC developed the Fish Safe Stability Education Course, which is available to all fish harvesters who want to improve their understanding of stability and find practical application to their vessel's operation.

Fish Safe also works closely with WorkSafeBC to improve the fishing claims process. For further information:

Gina Johansen, Safety Coordinator	Phone: 604-261-9700
Fish Safe BC	Email: <a href="mailto:fishsafe@telus.net">fishsafe@telus.net</a>
2-11771 Horseshoe Way	Website: <a href="http://www.fishsafebc.com">www.fishsafebc.com</a>
Richmond, BC V7A 4V4	