



Fisheries
and Oceans

Pêches
et Océans

① *Canada.*

② **SMALL
CRAFT
HARBOURS
BRANCH**

③ **NEWFOUNDLAND
REGION**

④ **ANNUAL REPORT**

1985-86

Canada

SMALL CRAFT HARBOURS BRANCH
DEPARTMENT OF FISHERIES AND OCEANS
NEWFOUNDLAND REGION

ANNUAL REPORT - 1985/86

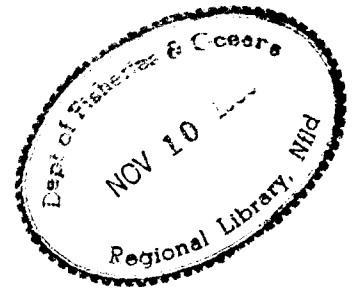


TABLE OF CONTENTS

PAGE

1.	Overview and Summary	1
2.	Small Craft Harbours Branch National Planning Framework	3
3.	Long Range Planning: Nfld. Region	8
4.	Project Evaluation	10
5.	Harbour Maintenance and Development Programs	11
6.	Harbour Operations	16
7.	Budget Utilization (Summary) 1985/86	17

APPENDICES

1. Photos
2. Harbour Classification
3. Minimum Services Offered
4. Condition Rating Scale
5. Examples of Project Type
6. Project Evaluation
7. Regular Program Projects 1985/86
8. Joint SCH-Job Creation Projects 1984/85/86
9. Joint SCH-Job Creation Projects 1985/86/87
10. Dredging Projects Utilizing DPW Plant
11. Advance Planning
12. Property Acquisition Underway

1.

OVERVIEW AND SUMMARY

Since the establishment of Small Craft Harbours Branch of the Department of Fisheries and Oceans in 1973, the Branch has been providing facilities such as breakwaters, wharves, slipways, gear storage, shore protection, floats and the dredging of channels and basins, in fishing and recreational harbours within the Newfoundland Region.

This third annual report produced by Small Craft Harbours Branch, Newfoundland Region, covers the major activities of the Branch for the fiscal year 1985/86.

During the fiscal year continuing efforts were made towards planning of the Small Craft Harbours Program to better define and prioritize projects, and to maximize the socio-economic benefits to the commercial fishing industry.

This has been an on-going process and additional emphasis was placed on this activity over the past three years. This has resulted in the development of a computerized formal planning framework, which will be referred to in more detail under a separate section of this report.

The report covers the major capital, operation and maintenance projects carried out in the Newfoundland Region during the fiscal year. In addition to the Branch's regular program, it has utilized funds drawn from such special

programs as the Storm Damage Program, the Dredging projects carried out by Public Works Canada, and Small Craft Harbours contribution to the C.E.I.C. Job Creation Program to achieve Small Craft Harbours Branch objectives.

The report also presents a summary of property acquisition and cost recovery policy with respect to the Small Craft Harbours Branch's fee structure, and examines the potential for increased cost recovery for commercial fishing and recreational harbours.

2. SMALL CRAFT HARBOURS BRANCH NATIONAL PLANNING FRAMEWORK

The new form of planning adopted by Small Craft Harbours Directorate, Ottawa, titled Harbour Maintenance Management System (HMMS), poses a more formal procedure for planning, controlling and maintaining harbours administered by Small Craft Harbours Branch of the Department of Fisheries and Oceans.

The system consists of four (4) components:

1. Harbour Classification
2. Guidelines of Accommodations
3. Harbour Condition
4. Harbour Audit

Harbour Classification

The harbour classification component of the system defines the different theoretical classes of harbours, under Small Craft Harbours' jurisdiction (i.e. A, B, C and D), with the "A" harbours being the most active, while "D" harbours have little or no activity. The criteria used to classify harbours were revised in 1984, with a view to determining the level of activity in each harbour. This ensures that the level of services at all harbours is consistently related to the harbour classification system across Canada. The classifications of all scheduled and potential harbours in DFO's Newfoundland Region is found

in Appendix 2.

Harbour utilization is now the basic criterion of the revised harbour classification system, and is defined as the number of vessel-metres a harbour is normally called on to accommodate on a daily basis over the fishing season, including both home and transient fleets.

<u>Class</u>	<u>Vessel-Metres</u>	<u>No. Of Harbours</u>
A	800 or more	31
B	300 to 900	60
C	400 or less	244
D		<u>70</u>
		405

In certain cases, landed value is considered on a harbour by harbour basis to determine whether a harbour has sufficient fishing activity per vessel to be designated an active commercial fishing harbour (Class A, B, or C), within a tolerance of 100 vessel metres for each harbour class. Landed value, however, is not one of the formal harbour classification criteria.

Guidelines of Accommodations

The guidelines of accommodations component of the system is a standard to be followed when a facility or

service is provided at one of our scheduled harbours. These are in a true sense a guide, and are therefore somewhat flexible to allow for special cases. There have been some minor revisions over the past year, but none has led to any significant change in the design and provision of facilities and services. A summary of services and standards by harbour classification is enclosed in Appendix 3.

Levels of Services

The four level system will be retained for commercial fishing harbours with the following ranking in level of services:

<u>Class</u>	<u>Services</u>
A	Full range of services and full-time on-site management
B	Partial services and at least part-time on-site management
C	Minimal services and some on-site management where practical
D	Maintenance for safety reasons only

Recreational Harbours

The level of services for recreational harbours differs somewhat from those for commercial fishing harbours, as

there is a much greater difference in the type of harbours from region to region. These range from small tourist wharves with a limited amount of berthage to large harbours having up to 11,000 metres of berthage. In the Newfoundland Region, the demand is very low, and recreational facilities have not been a priority in harbour planning.

Harbour/Facility Condition

The condition component of the system includes an in-depth inventory and inspection of all harbours under the Branch's jurisdiction, evaluating the facilities and levels of service offered at each location. This condition study enables Branch planners to review the condition of harbours, and see if they meet the requirements set out in the harbour classification component.

Each facility in the harbours is rated between 1 and 5. Condition 1 signifies an unsafe condition, and hence is accorded the most urgency; condition 2 means a poor condition, and condition 3 indicates a fair condition. Conditions 4 and 5 indicate good and very good conditions.

The criteria for the facility condition rating are listed in Appendix 4.

Harbour Audit

The harbour audit component of the system will include provision for assessment of a certain percentage of Small Craft Harbours facilities in each region to evaluate the

effectiveness of the Branch's long range planning program on the level of service provided. This data will permit the Branch to substantiate its requests for adjustments in expenditures per harbour. This audit will also let the Branch compare the services offered in the different regions to ensure that major differences can be gradually eliminated, and thus provide users across the country with similiar facilities.

Project Types

Projects are assigned a project type as EW (Essential Work), PM (Preventive Maintenance Work), or UG (Upgrading Work). Essential work may be further described as being either Essential Repairs, or Essential New Facilities. Preventive Maintenance Work is subdivided as being short term or long term. Upgrading Work is used to describe projects intended to provide new facilities or components needed for long term development. A more complete description of the criteria of each class of work is given in Appendix V.

3. LONG RANGE PLANNING: NEWFOUNDLAND REGION

For the last several years, the Small Craft Harbours Branch in the Newfoundland Region has placed considerable emphasis on a long range plan for the development of commercial fishing harbour facilities in the Newfoundland Region. This process has become especially important in light of the current restraints on the Branch's yearly budgets, and the resulting inability to fully meet all the demands for new facilities and improvements to existing services.

A revised long term program includes 314 items in 160 harbours. (See Appendix 14).

Priorization

The development of a long term list of projects is a vital part of the planning process. Besides giving planners a comprehensive overview of the projects to be done over a number of years, the long term list is the basis used in assigning priorities to the various projects. In general terms, two factors govern the priority assigned any given project; the facility condition rating assigned, and the class of the harbour in which the facility is located. Harbours are classified as being "A", "B", "C", or "D" harbours, with Class A harbours being the most active. In setting priorities for projects, planners will assign the highest priority to Condition 1 projects in Class A

harbours, with other condition rating - harbour class combinations being ranked accordingly. This system is intended to ensure that the most urgent work will be done first, and that an orderly plan exists to accomplish Branch objectives over the next several years.

The system of project prioritization was developed by the Newfoundland Region, Small Craft Harbours Branch, and has been adopted nationally by Small Craft Harbours.

4.

PROJECT EVALUATION

As part of the Small Craft Harbours Branch continuing efforts towards providing maximum socio-economic benefits to the commercial fishing industry, the Branch has opted to carry out a Project Evaluation of all facilities with a project construction cost over \$250,000. This project assessment will be carried out within one-to-two years after a facility is put into service.

The basic criteria for the project evaluation was developed by the Newfoundland Region, Small Craft Harbours Branch, and has been adopted nationally by Small Craft Harbours. (See Appendix 6.)

5. HARBOUR MAINTENANCE AND DEVELOPMENT PROGRAMS

Regular Program Projects

Twenty-two projects were carried over from the previous year and fourteen new projects were started. All projects proceeded without unusual occurrences and were completed in 1985/86 with the exception of: Fender Reconstruction at Bell Island, Wharf Reconstruction at Greenspond, Longliner Wharf Reconstruction at Bonavista. (See Appendix 7)

One hundred and thirty minor repair and dredging projects each less than \$25,000, totalling \$578,000, were carried out directly by Small Craft Harbours Branch staff.

Assistance to Job Creation Projects

Under the 1984/85/86 Job Creation Programs, Small Craft Harbours Branch assisted 69 projects. Financial assistance varied up to \$45,000 per project. All projects were completed with the exception of Wharf Reconstruction at Tickle Cove. Construction on this project is continuing. (See Appendix 8)

Under the 1985/86/87 Job Creation Programs, Small Craft Harbours Branch assisted 34 projects under the Special Response Program, and is assisting 26 projects under the Job Development Program and the program under Section 38 of U.I.C. Act.

All projects under the Special Response Program were completed by March 31, 1986. The other projects are continuing into 1986/87. (See Appendix 9)

Dredging - Using Public Works Canada Plants 400 or 401

Under this arrangement, nine dredging projects were undertaken, seven were completed and two are being continued into 1986/87 namely: Happy Adventure and Old Perlican. All dredging operations ceased prior to December 1985. Public Works Canada plans to moth-ball dredge 400 and it will not therefore be available in the future. Public Works Canada dredge 401 will continue to be available and will be used primarily on Small Craft Harbours projects. In 1986/87, Public Works Canada propose double-crewing this dredge and working 12 hours per day, seven days per week. (See Appendix 10)

Advance Planning

General: (See Appendix 11)

Aerial photography was completed for 65 locations, bringing the total of locations for which aerial photography is now available to 239.

Community mapping for ten locations was completed March 31, 1986. This brings the total to 27 locations.

^{→harbour}
Sounding and topographic surveys were completed at 14 locations. (See Appendix 11)

Special engineering studies were undertaken as follows:

St. Anthony	Harbour Development
Bonavista	Hydraulic Model
Bonavista	O'Deas Pond Canal Sidewalls Reconst.

Harbour Condition Surveys:

Forty Class D scheduled harbours were surveyed, assessed and the information added to the computer inventory module. These were reviewed to either (1) retain jurisdiction, i.e. upgrade to Class C or (2) proceed with disposal, i.e. remain Class D.

All the harbours under Small Craft Harbours jurisdiction have now been surveyed with the exception of several in Labrador; these will be done during the summer 1986.

Long Term Plan

A long term list of projects was compiled during 1985, and is currently under review. 314 items were identified in 160 unique harbour locations. This proposed program constitutes our long term plan on a priority basis, and the schedule for implementation will depend on the budget allocation for the Newfoundland Region in future years.

Harbour Development Plans

Harbour development plans are underway in ninety-four (94) locations. These are at various stages of completion ranging from a plan indicating the existing structures only, to a full development plan showing existing and proposed facilities, which has been reviewed with the fishermen's committee and accepted. Twenty-five harbour plans are in the last category and another sixty-nine are ready for review.

Harbour Classification

A more critical and rational review was made of the classification of harbours and changes were made as follows:

<u>HARBOUR CLASS</u>	<u>NUMBER</u> <u>(Previous)</u>	<u>NUMBER</u> <u>(Revised)</u>
A	33	31
B	86	60
C	166	245
D	<u>120</u>	<u>69</u>
TOTAL	<u>405</u>	<u>405</u>

It is proposed to remove 40 of the D harbours from the Gazetted List of harbours and to add five additional harbours (as of yet unclassified). This will bring the

total number of harbours to 375. (The latest gazetted list of harbours by Order-In-Council is dated May 23, 1985, which shows 405 harbours under Small Craft Harbours jurisdiction in the Newfoundland Region.)

6.

HARBOUR OPERATIONSRevenue:

Total revenue collected to date from the following sources is \$101,018.07.

Wharfage	\$ 4,942.68
Berthage	30,996.77
Licences	17,621.00
Leases	46,809.02
Other	<u>648.60</u>
TOTAL	\$101,018.07

Leases and Licences Issued

Leases	66
Licences	<u>154</u>
TOTAL	220

Property Acquisition

Property acquisition is continuing at 73 locations.
(See appendix 12).

7. BUDGET UTILIZATION (Summary) 1985/86

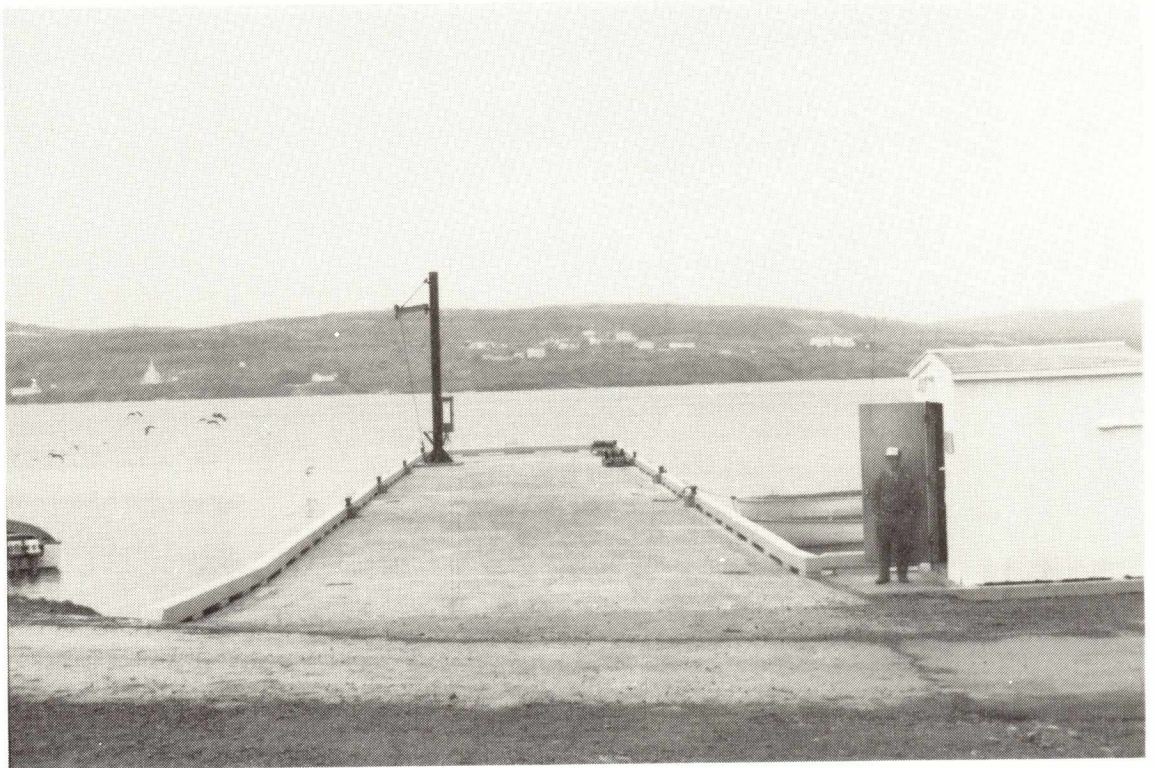
<u>ITEM</u>	<u>\$000</u>	<u>COMM. TO Mar. 31/ 1986</u>	<u>EXP. TO Mar. 31/ 1986</u>
Salaries	250.0	424.1	424.1
<u>Harbour Maintenance</u>			
- Goods and Services	140.0	90.7	90.7
- Advance Planning	330.0	307.5	307.5
- Assistance to joint SCH/C.W. projects	2,181.0	1,799.6	1,799.6
- Minor O&M, Dredging and Capital projects less than \$30,000	578.0	454.3	454.3
- Projects greater than \$30,000	3,661.0	3,811.5	3,811.5
- Dredging utilizing DPW plant	<u>1,464.0</u>	<u>1,464.0</u>	<u>1,464.0</u>
Sub-total	\$8,604.0	\$8,351.7	\$8,351.7
<u>Harbour Operations</u>			
- Goods and Services	100.0	96.0	96.0
- Property Acquisition	<u>350.0</u>	<u>254.4</u>	<u>254.4</u>
Sub-total	<u>450.0</u>	<u>350.4</u>	<u>350.4</u>
TOTAL	<u>\$9,054.0</u>	<u>\$8,702.1</u>	<u>\$8,702.1</u>
<u>By Code Vote</u>			
101 - Salaries	8.0	0.0	0.0
103 - Salaries	242.0	424.1	292.1
204 - O&M Regular	1,557.0	1,495.4	1,241.1
304 - Capital Regular	5,221.0	4,787.1	1,758.8
337 - Capital Storm Damage	562.0	531.5	506.0
205 - O&M Dredging	<u>1,464.0</u>	<u>1,464.0</u>	<u>650.0</u>
	<u>\$9,054.0</u>	<u>\$8,702.1</u>	<u>\$8,702.1</u>

NOTE:

\$324,000 decommitted as a result of projects deferred because of the spending freeze.



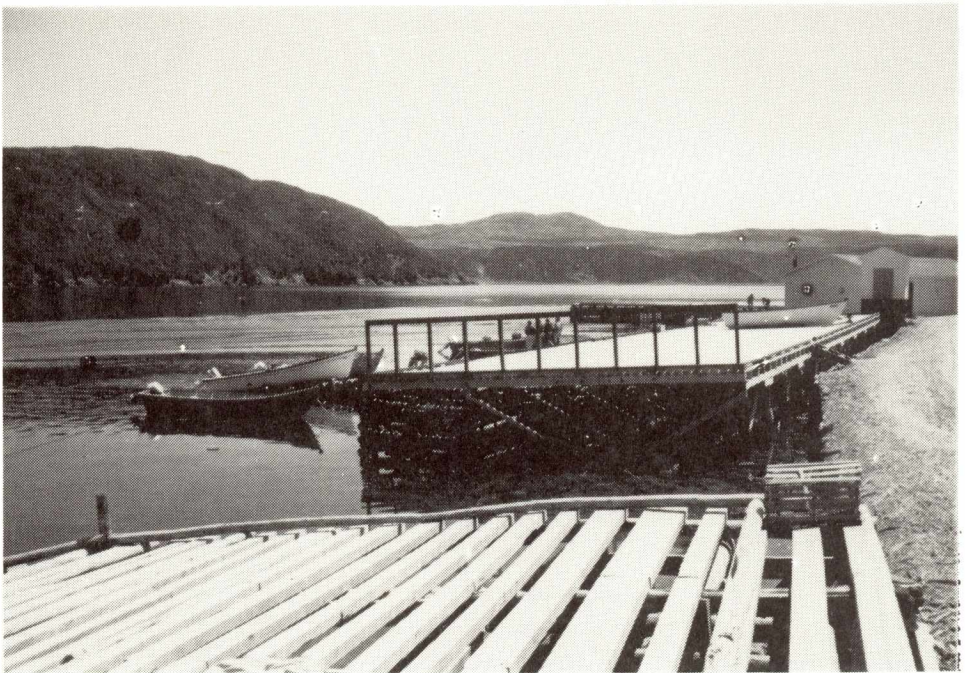
CHAMPNEYS WEST
WHARF CONSTRUCTION (CANADA WORKS)



CHAMPNEYS WEST
WHARF CONSTRUCTION (CANADA WORKS)



HARBOUR MILLE
SLIPWAY (CANADA WORKS)



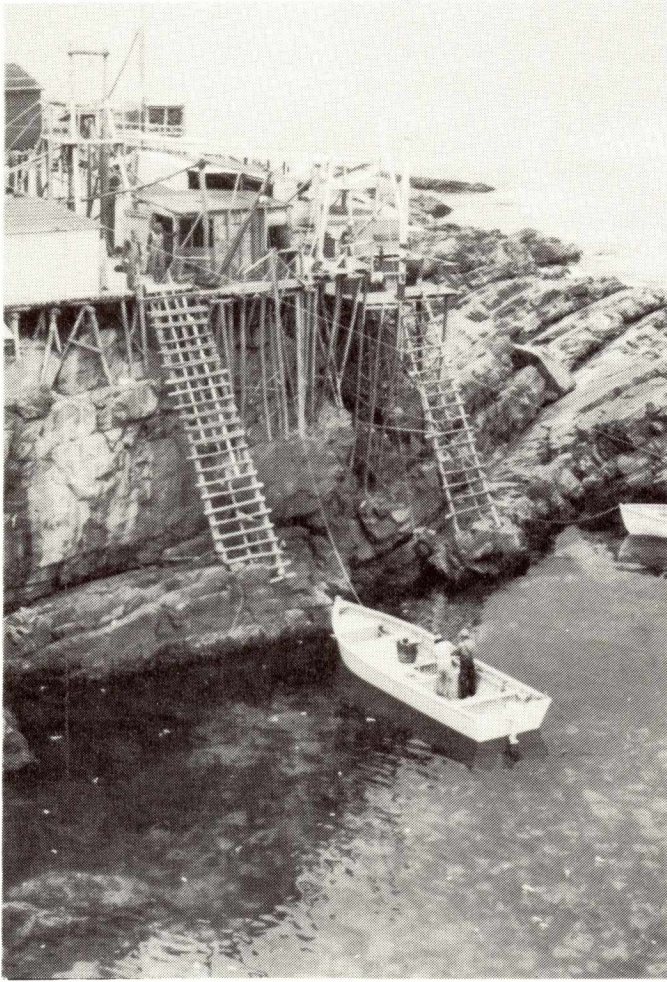
GRAND LE PIERRE
SLIPWAY (CANADA WORKS)



WINTERTON
WHARF (CANADA WORKS)



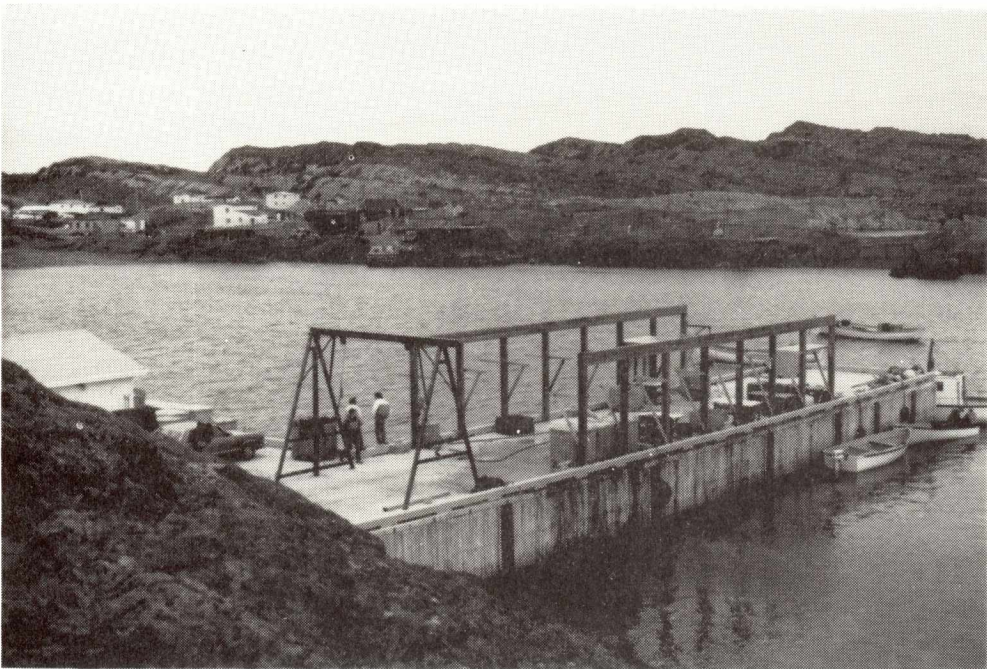
GREENS HARBOUR
GEAR SHED (CANADA WORKS)



POUCH COVE
BEFORE & AFTER (CANADA WORKS)



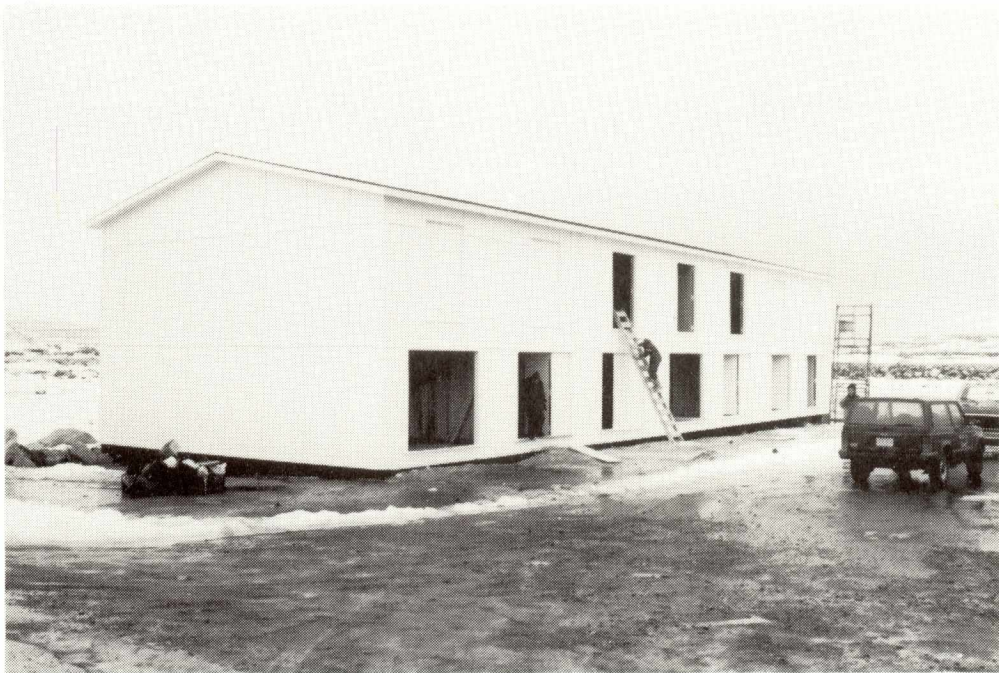
TICKLE COVE
WHARF RECONSTRUCTION (CANADA WORKS)



TICKLE COVE
WHARF RECONSTRUCTION (CANADA WORKS)



OLD PERLICAN
GEAR SHED UNDER CONSTRUCTION
(CANADA WORKS)



OLD PERLICAN
GEAR SHED UNDER CONSTRUCTION
(CANADA WORKS)



OLD PERLICAN
GEAR SHED UNDER CONSTRUCTION
(CANADA WORKS)



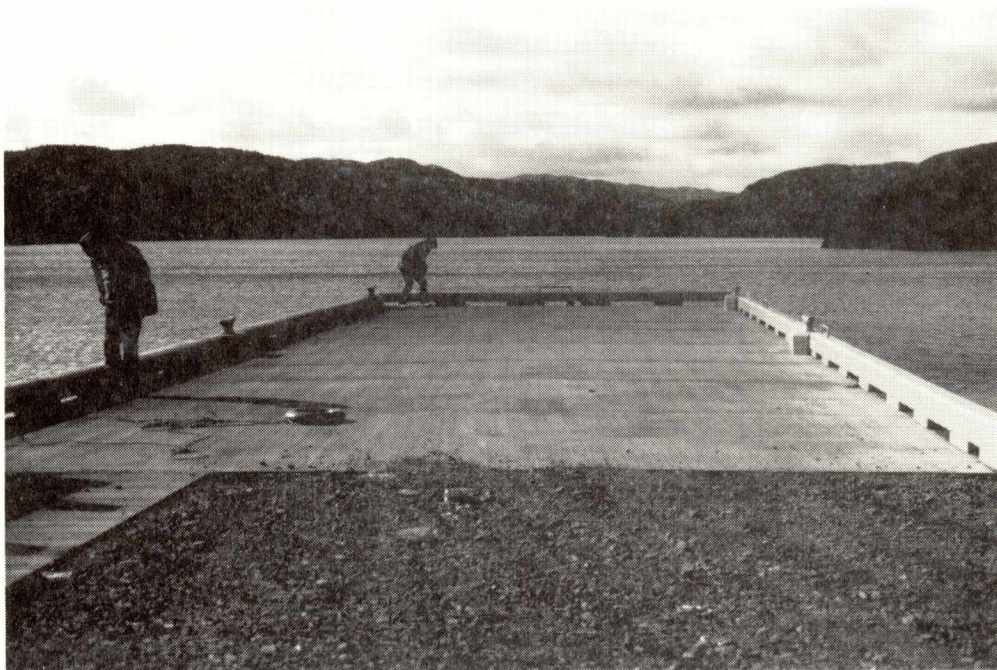
OLD PERLICAN
GEAR SHED UNDER CONSTRUCTION
(CANADA WORKS)



LEADING TICKLE
WHARF (CANADA WORKS)



LEADING TICKLES
WHARF (CANADA WORKS)



GOOSEBERRY COVE
BREAKWATER CONSTRUCTION



GOOSEBERRY COVE
BREAKWATER CONSTRUCTION



GOOSEBERRY COVE
BREAKWATER CONSTRUCTION



GOOSEBERRY COVE
BREAKWATER CONSTRUCTION



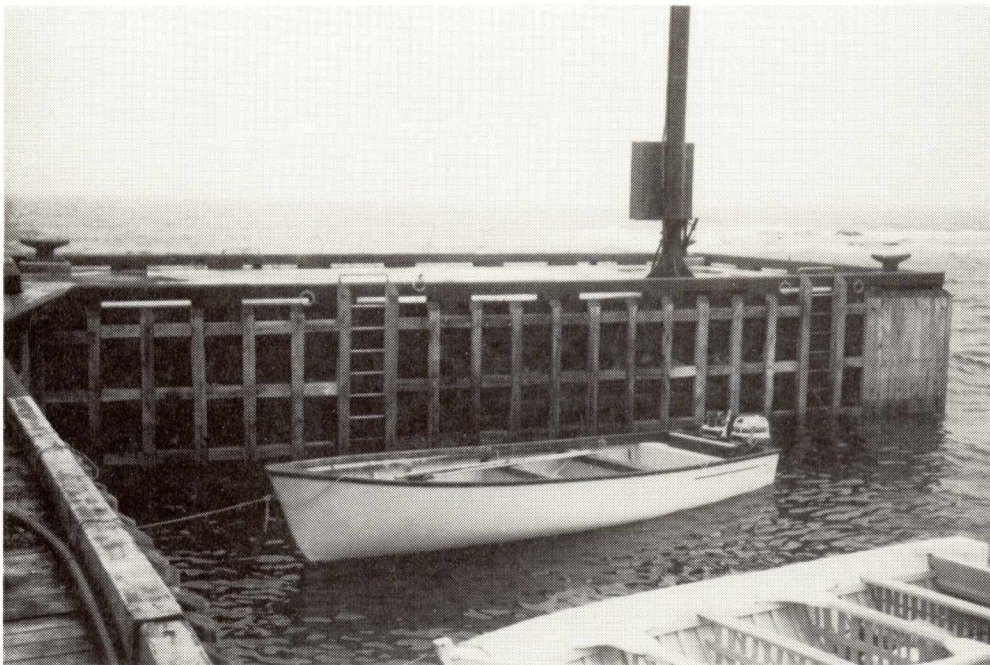
FOGO
WHARF APPROACH PAVING



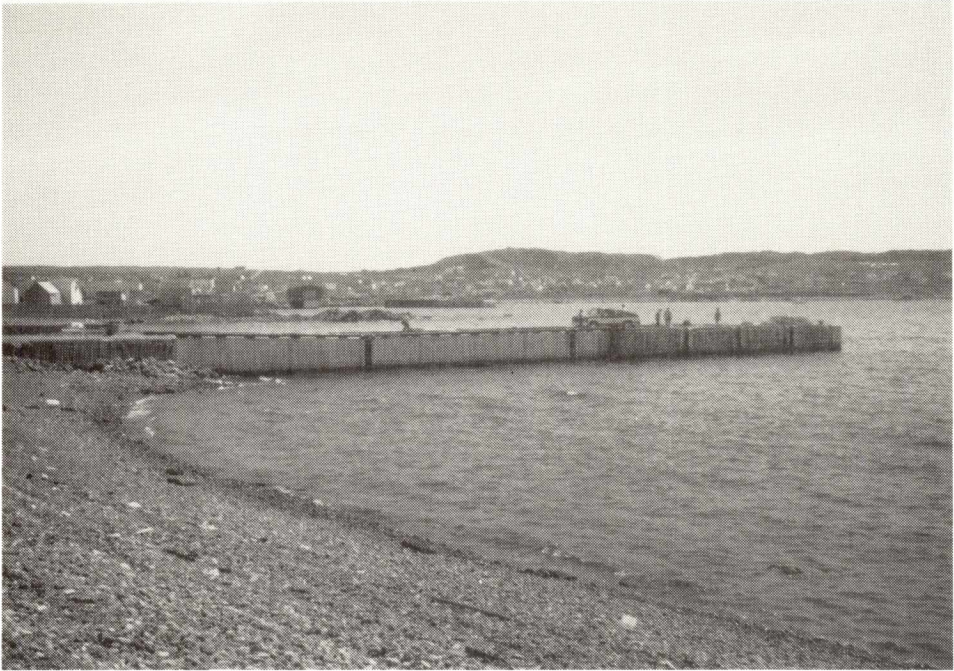
FOGO
WHARF APPROACH PAVING



CAPE FREELS NORTH
WHARF REPAIRS



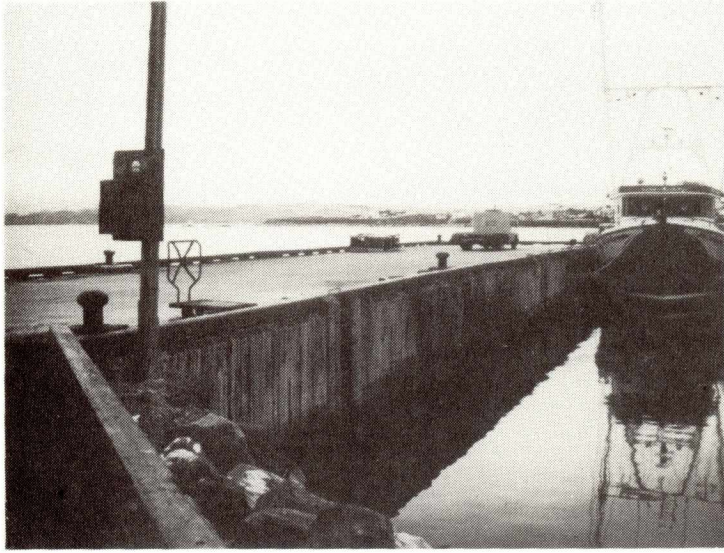
CAPE FREELS NORTH
WHARF REPAIRS



BONAVISTA (MOCKBEGGER)
WHARF REPAIRS



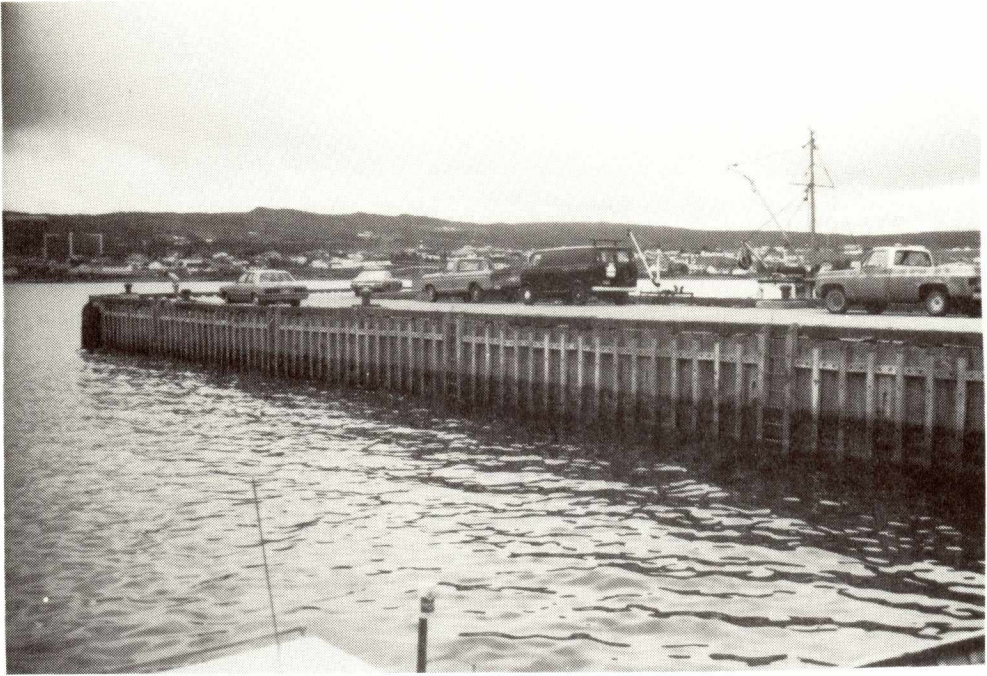
BONAVISTA (MOCKBEGGER)
WHARF REPAIRS



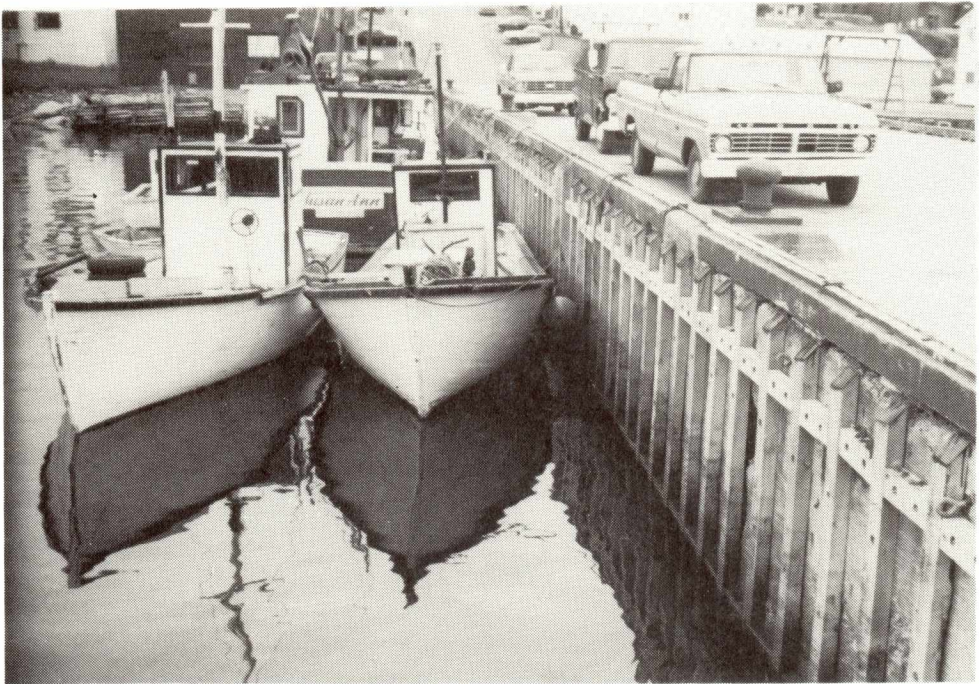
BAY ROBERTS
WHARF REPAIRS



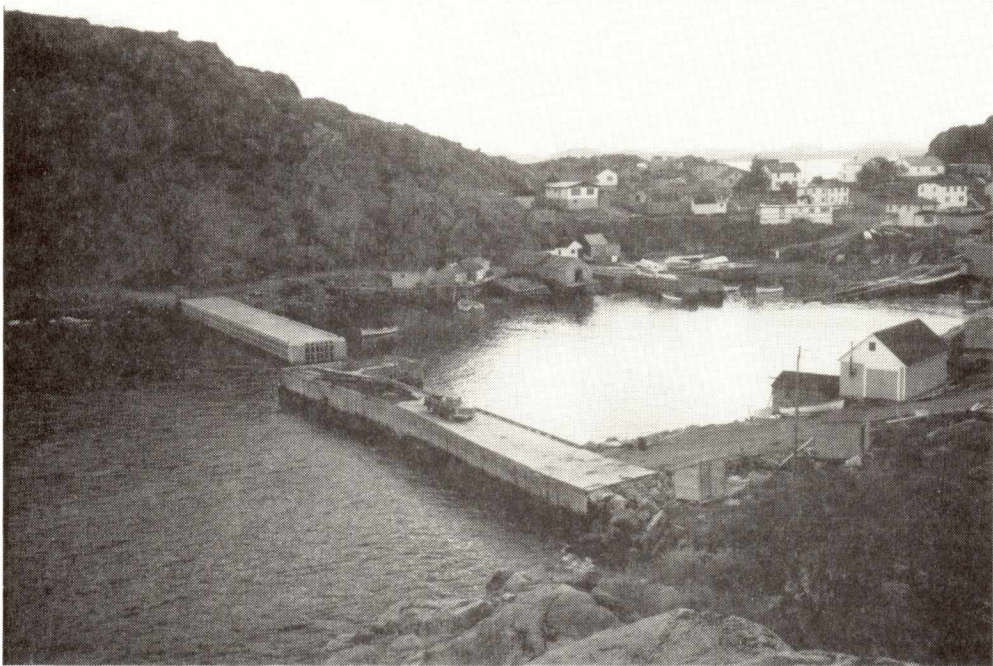
BAY ROBERTS
WHARF REPAIRS



CARBONEAR
WHARF REPAIRS



CARBONEAR
WHARF REPAIRS



NIPPERS HARBOUR (NOBLE'S COVE)
BREAKWATER RECONSTRUCTION



NIPPERS HARBOUR (NOBLE'S COVE)
BREAKWATER RECONSTRUCTION

HARBOUR CODE	LOCATION	REG	RESP	USE	CLASS	4 COST CODE	CNSTY CODE	...1 VESSEL LENGTHS (metres)
2	Adams Cove	NFLD	SCX	F	D	1	B-T-C	
3	Admirals Beach	NFLD	SCH	F	B	801	S J W	451.7
4	Admirals Cove (Cape Broyle)	NFLD	SCH	F	C	802	S J W	
5	Allan's Island	NFLD	SCH	F	D	151	B-SG	
7	Anderson's Cove	NFLD	SCX	F	D	152	B-SG	
8	Angels Cove	NFLD	SCX	F	D	868	S J W	
9	Aquaforte	NFLD	SCH	F	C	803	S J W	186.5
10	Argentia - Boat Pool	NFLD	SCH	F	C	865	S J W	
11	Arnold's Cove	NFLD	SCH	F	A	804	S J W	820.0
12	Aspen Cove	NFLD	SCH	F	C	301	G-T	162.6
13	Avondale	NFLD	SCH	F	C	726	S J E	
735	Bacon Cove	NFLD	SCH	F	C	765	S J E	
14	Baine Harbour	NFLD	SCH	F	C	153	B-SG	302.8
17	Bar Haven	NFLD	SCX	F	D	156	B-SG	
18	Bareneed	NFLD	SCH	F	C	3	B-T-C	17.0
20	Barr'd Island	NFLD	SCH	F	C	302	G-T	62.5
23	Battle Harbour	NFLD	SCH	F	C	452	GFWBL	
24	Bauline	NFLD	SCH	F	C	727	S J E	180.9
25	Bauline East	NFLD	SCH	F	C	805	S J W	146.9
26	Bay Bulls	NFLD	SCH	F	B	806	S J W	597.0
29	Bay du Nord	NFLD	SCX	F	D	154	B-SG	
30	Bay L'Argent	NFLD	SCH	F	C	253	B-SG	351.8
31	Bay Roberts	NFLD	SCH	F	B	141	B-T-C	734.8
28	Bay de Verde	NFLD	SCH	F	B	4	B-T-C	763.9

HARBOUR CODE	LOCATION	REG	RESP	USE	CLASS	COST CODE	CNSTY CODE	VESSEL LENGTHS (metres)
34	Beaumont	NFLD	SCH	F	B	303	G-T	479.6
35	Bell Island (The Beach)	NFLD	SCH	F	C	729	S J E	182.1
574	Belleoram	NFLD	SCH	F	C	259	B-SG	301.0
38	Bellevue	NFLD	SCH	F	C	5	B-T-C	201.1
41	Birchy Bay	NFLD	SCH	F	C	304	G-T	128.1
42	Birchy Cove	NFLD	SCX	F	D	6	B-T-C	
44	Biscay Bay	NFLD	SCH	F	D	807	S J W	
48	Black Island	NFLD	SCH	F	C	305	G-T	
609	Black Tickle	NFLD	SCH	F	B	455	GFWBL	
49	Blackhead	NFLD	SCH	F	C	8	B-T-C	45.1
50	Blow Me Down	NFLD	SCH	F	C	9	B-T-C	
53	Boat Harbour	NFLD	SCH	F	C	157	B-SG	121.8
54	Bonavista	NFLD	SCH	F	A	10	B-T-C	1386.6
55	Boxey	NFLD	SCH	F	C	158	B-SG	101.1
56	Boyd's Cove	NFLD	SCH	F	C	556	G-T	
57	Bragg's Island	NFLD	SCH	F	C	429	G-T	242.5
58	Branch	NFLD	SCH	F	C	809	S J W	209.8
59	Bridgeport	NFLD	SCH	F	B	306	G-T	477.0
61	Brighton	NFLD	SCH	F	C	307	G-T	258.8
62	Brigus	NFLD	SCH	F	C	11	B-T-C	253.3
63	Brigus South (Hilldale)	NFLD	SCH	F	C	810	S J W	101.6
64	Bristol's Hope	NFLD	SCH	F	C	12	B-T-C	
65	Britannia	NFLD	SCH	F	C	13	B-T-C	115.1
66	British Harbour	NFLD	SCH	F	D	14	B-T-C	
67	Broad Cove	NFLD	SCH	F	D	15	B-T-C	
70	Brownsdale	NFLD	SCH	F	C	16	B-T-C	

HARBOUR CODE	LOCATION	REG	RESP	USE	CLASS	COST CODE	CNSTY CODE	VESSEL LENGTHS (metres)
71	Bryant's Cove	NFLD	SCH	F	C	17	B-T-C	114.9
73	Burgeo	NFLD	SCH	F	A	159	B-SG	1096.7
74	Burgoynes Cove	NFLD	SCH	F	C	18	B-T-C	56.0
75	Burin	NFLD	SCH	F	B	274	B-SG	1450.1
76	Burlington	NFLD	SCX	F	D	457	GFWBL	
77	Burnside	NFLD	SCH	F	C	309	G-T	406.8
78	Burnt Cove	NFLD	SCH	F	C	811	S J W	26.8
81	Burnt Island Tickle	NFLD	SCX	F	D	160	G-T	
82	Burnt Point	NFLD	SCH	F	C	20	B-T-C	
85	Calvert	NFLD	SCH	F	C	812	S J W	232.3
87	Campbellton	NFLD	SCH	F	C	311	G-T	231.6
88	Cannings Cove	NFLD	SCH	F	B	23	B-T-C	384.8
89	Cape Broyle	NFLD	SCH	F	B	813	S J W	530.7
90	Cape Freels North	NFLD	SCH	F	C	313	G-T	184.8
91	Cape Island	NFLD	SCX	F	D	314	G-T	
96	Caplin Cove (Concpetion Bay)	NFLD	SCH	F	C	25	B-T-C	20.7
695	Caplin Cove (Trinity Bay)	NFLD	SCH	F	C	25	B-T-C	
98	Carbonear	NFLD	SCH	F	B	149	B-T-C	775.3
99	Card's Harbour	NFLD	SCH	F	C	315	G-T	222.8
739	Cartwright (Fishermen's Wharf)	NFLD	SCH	F	B	560	GFWBL	
101	Catalina	NFLD	SCH	F	C	147	B-T-C	1896.2
102	Cavendish	NFLD	SCH	F	C	26	B-T-C	105.1
103	Centreville	NFLD	SCH	F	C	27	G-T	161.0
736	Champney's	NFLD	SCH	F	C	28	B-T-C	
106	Champney's West	NFLD	SCH	F	C	29	B-T-C	92.6

HARBOUR CODE	LOCATION	REG	RESP	USE	CLASS	COST CODE	CNSTY CODE	VESSEL LENGTHS (metres)
107	Chance Cove	NFLD	SCH	F	C	31	B-T-C	228.6
108	Change Islands	NFLD	SCH	F	B	316	G-T	776.2
111	Chapels Cove	NFLD	SCX	F	D	730	S J E	
112	Charleston	NFLD	SCH	F	C	32	B-T-C	156.0
114	Clarke's Beach	NFLD	SCH	F	C	33	B-T-C	
113	Clarke's Head	NFLD	SCH	F	D	320	G-T	
116	Clifton	NFLD	SCH	F	D	34	B-T-C	
117	Coachman's Cove	NFLD	SCH	F	C	462	GFWBL	169.5
119	Coley's Point	NFLD	SCH	F	C	35	B-T-C	209.2
121	Colliers	NFLD	SCH	F	C	731	S J E	
122	Comfort Cove	NFLD	SCH	F	B	322	G-T	492.3
123	Conception Harbour	NFLD	SCH	F	C	732	S J E	172.0
124	Conche	NFLD	SCH	F	A	460	GFWBL	915.9
125	Conne River	NFLD	SCH	F	C	166	B-SG	6.1
127	Coomb's Cove	NFLD	SCH	F	C	167	B-SG	156.4
129	Cottle's Island	NFLD	SCH	F	B	323	G-T	656.9
130	Cottrell's Cove	NFLD	SCH	F	B	461	G-T	664.3
132	Cowards Island	NFLD	SCX	F	D	36	G-T	
135	Crow Head	NFLD	SCH	F	C	324	G-T	48.8
136	Cupids	NFLD	SCH	F	C	38	B-T-C	172.0
137	Cuslett	NFLD	SCH	F	C	815	S J W	
141	Dark Hole	NFLD	SCH	F	D	325	G-T	
142	Davidsville (Mann Point)	NFLD	SCH	F	C	326	G-T	42.7
143	Davis Cove	NFLD	SCH	F	C	168	B-SG	74.3
144	Deadman's Bay	NFLD	SCH	F	C	327	G-T	134.0
145	Deep Bay	NFLD	SCH	F	C	328	G-T	271.0

HARBOUR CODE	LOCATION	REG	RESP	USE	CLASS	COST CODE	CNSTY CODE	VESSEL LENGTHS (metres)
146	Deer Harbour	NFLD	SCH	F	C	39	B-T-C	
147	Deer Island	NFLD	SCX	F	D	329	G-T	
149	Dildo	NFLD	SCH	F	B	137	B-T-C	575.9
150	Dildo South	NFLD	SCH	F	C	40	B-T-C	
152	Dover-Butchers Cove/Wellington	NFLD	SCH	F	C	332	G-T	312.9
153	Duck Island	NFLD	SCX	F	D	333	G-T	
154	Dunfield	NFLD	SCH	F	D	41	B-T-C	
155	Duntara	NFLD	SCH	F	C	42	B-T-C	118.3
160	Elliott's Cove	NFLD	SCH	F	C	43	B-T-C	
161	Elliston	NFLD	SCH	F	C	44	B-T-C	85.5
162	Embree	NFLD	SCH	F	C	335	G-T	401.3
579	Englee	NFLD	SCH	F	A	465	GFWBL	1050.4
163	English Harbour	NFLD	SCH	F	C	45	B-T-C	
164	English Harbour West (Evans Co)	NFLD	SCH	F	C	257	B-SG	185.0
166	Exploits Island	NFLD	SCH	F	C	336	G-T	
168	Fair Haven	NFLD	SCH	F	B	817	S J W	353.8
167	Fair Island	NFLD	SCH	F	C	337	G-T	
169	Fermeuse	NFLD	SCH	F	A	818	S J W	1098.4
170	Ferryland	NFLD	SCH	F	C	819	S J W	309.6
172	Flat Island	NFLD	SCX	F	D	435	G-T	
173	Flat Island (Port Elizabeth)	NFLD	SCH	F	C	173	B-SG	
174	Flat Rock Tickle	NFLD	SCH	F	C	445	G-T	115.2
175	Flatrock	NFLD	SCH	F	C	133	S J E	136.2
176	Fleur De Lys	NFLD	SCH	F	B	467	GFWBL	555.0
178	Fogo - Brkwtr Wharf/Canal Side	NFLD	SCH	F	A	409	G-T	914.0
179	Forest Field	NFLD	SCH	F	C	820	S J W	

HARBOUR CODE	LOCATION	REG	RESP	USE	CLASS	COST CODE	CNSTY CODE	VESSEL LENGTHS (metres)
183	Fortune Harbour	NFLD	SCH	F	C	469	G-T	182.0
182	Fortune-Fishermen's Wharf/Fish Plant	NFLD	SCH	F	A	169	B-SG	1082.4
184	Fosters Point	NFLD	SCH	F	C	46	B-T-C	
185	Fox Cove	NFLD	SCX	F	D	470	B-SG	
186	Fox Harbour	NFLD	SCH	F	C	821	S J W	137.0
189	Foxtrap	NFLD	SCH	F	A	734	S J E	949.8
190	Francois - Slipway	NFLD	SCH	F	C	171	B-SG	300.0
191	Frederickton	NFLD	SCH	F	C	338	G-T	201.9
192	Frenchman's Cove	NFLD	SCH	F	C	172	B-SG	137.5
194	Freshwater	NFLD	SCH	F	C	48	B-T-C	39.2
196	Garbo	NFLD	SCH	F	D	339	G-T	
197	Garden Cove	NFLD	SCH	F	C	175	B-SG	166.0
198	Garnish	NFLD	SCH	F	C	176	B-SG	276.5
199	Gaskiers	NFLD	SCH	F	C	823	S J W	54.4
201	Gaultois - Slipway	NFLD	SCH	F	A	254	B-SG	1331.7
202	Gay Side (Birchy Bay North)	NFLD	SCH	F	D	340	G-T	
738	Georges Cove	NFLD	SCH	F	C	562	GFWBL	
205	Gillard's Cove	NFLD	SCH	F	C	342	G-T	
203	Gillesport	NFLD	SCH	F	C	341	G-T	
206	Glovers Harbour	NFLD	SCH	F	C	343	G-T	195.2
207	Glovertown - Saunders Cove	NFLD	SCH	F	C	344	G-T	208.9
208	Goose Cove	NFLD	SCH	F	B	536	GFWBL	336.7
209	Gooseberry Cove	NFLD	SCH	F	B	49	B-T-C	421.3
210	Grand Bank	NFLD	SCH	F	A	177	B-SG	1168.1
214	Grand Le Pierre	NFLD	SCH	F	C	181	B-SG	93.9

HARBOUR CODE	LOCATION	REG	RESP	USE	CLASS	COST CODE	CNSTY CODE	VESSEL LENGTHS (metres)
215	Grates Cove	NFLD	SCH	F	C	50	B-T-C	233.8
223	Green's Harbour	NFLD	SCH	F	C	51	B-T-C	157.8
224	Greens Island	NFLD	SCH	F	D	345	G-T	
225	Greenspond	NFLD	SCH	F	B	346	G-T	564.8
226	Griquet	NFLD	SCH	F	B	472	GFWBL	464.4
227	Gull Island	NFLD	SCH	F	D	52	B-T-C	
228	Hampden	NFLD	SCH	F	C	471	GFWBL	77.6
229	Hant's Harbour	NFLD	SCH	F	B	53	B-T-C	323.6
230	Happy Adventure	NFLD	SCH	F	B	349	G-T	464.5
231	Harbour Breton	NFLD	SCH	F	A	185	B-SG	1402.1
232	Harbour Grace	NFLD	SCH	F	A	54	B-T-C	972.2
234	Harbour Main	NFLD	SCH	F	C	736	S J E	215.5
235	Harbour Mille	NFLD	SCH	F	C	186	B-SG	240.1
236	Harbour Round	NFLD	SCH	F	C	474	GFWBL	148.6
237	Harry's Harbour	NFLD	SCH	F	C	476	GFWBL	241.5
238	Hatchet Cove	NFLD	SCH	F	C	55	B-T-C	
240	Heart's Content	NFLD	SCH	F	B	56	B-T-C	298.5
241	Heart's Delight	NFLD	SCH	F	C	133	B-T-C	132.2
242	Heart's Desire	NFLD	SCH	F	C	57	B-T-C	79.5
243	Hermitage	NFLD	SCH	F	B	189	B-SG	617.5
244	Herring Neck	NFLD	SCH	F	A	351	G-T	1026.5
245	Hibb's Hole	NFLD	SCH	F	C	58	B-T-C	
246	Hickman's Harbour	NFLD	SCH	F	B	59	B-T-C	435.4
248	Hillgrade	NFLD	SCH	F	C	352	G-T	207.2
249	Hodge's Cove	NFLD	SCH	F	C	60	B-T-C	77.6
250	Holyrood	NFLD	SCH	F/R	B	740	S J E	445.0

HARBOUR CODE	LOCATION	REG	RESP	USE	CLASS	COST CODE	CNSTY CODE	VESSEL LENGTHS (metres)
251	Hopeall	NFLD	SCH	F	C	61	B-T-C	63.0
252	Horse Islands	NFLD	SCH	F	C	478	GFWBL	
253	Hunt's Island	NFLD	SCX	F	D	188	B-SG	
254	Indian Burying Place	NFLD	SCH	F	D	479	GFWBL	
258	Island Harbour	NFLD	SCH	F	C	354	G-T	208.7
259	Isle Valen	NFLD	SCH	F	C	191	B-SG	136.2
261	Islington	NFLD	SCH	F	C	62	B-T-C	70.8
263	Jackson's Arm	NFLD	SCH	F	B	481	GFWBL	560.4
264	Jackson's Cove	NFLD	SCH	F	C	482	GFWBL	224.0
576	Jamestown	NFLD	SCH	F	C	148	B-T-C	
537	Jenkins Cove	NFLD	SCP	F	C	402	G-T	
266	Jerseyside	NFLD	SCH	F	B	824	S J W	390.3
267	Job's Cove	NFLD	SCH	F	C	64	B-T-C	189.1
268	Joe Batt's Arm	NFLD	SCH	F	A	355	G-T	992.2
269	Keels	NFLD	SCH	F	C	65	B-T-C	118.1
271	King's Cove	NFLD	SCH	F	C	66	B-T-C	92.8
272	King's Point	NFLD	SCH	F	C	483	GFWBL	136.7
277	LaScie	NFLD	SCH	F	A	547	GFWBL	1148.8
278	Ladle Cove	NFLD	SCH	F	C	356	G-T	221.8
279	Lady Cove	NFLD	SCH	F	C	61	B-T-C	
280	Lally Cove	NFLD	SCX	F	D	197	B-SG	
281	Lamaline	NFLD	SCH	F	C	198	B-SG	203.7
284	Lawn	NFLD	SCH	F	B	200	B-SG	337.7
285	Lawrenceton (Laurenceton)	NFLD	SCX	F	D	357	G-T	
286	Lead Cove	NFLD	SCH	F	D	68	B-T-C	
287	Leading Ticks (West)	NFLD	SCH	F	A	358	G-T	1020.4

HARBOUR CODE	LOCATION	REG	RESP	USE	CLASS	COST CODE	CNSTY CODE	VESSEL LENGTHS (metres)
288	Lewisporte - Fishermen's Wharf	NFLD	SCH	F	C	542	G-T	215.2
291	Little Burnt Bay	NFLD	SCH	F	C	360	G-T	246.4
292	Little Catalina	NFLD	SCH	F	C	69	B-T-C	83.0
293	Little Fogo Islands	NFLD	SCX	F	D	361	G-T	
294	Little Harbour East	NFLD	SCH	F	B	825	S J W	455.5
295	Little Harbour West	NFLD	SCX	F	D	826	B-SG	
296	Little Heart's Ease	NFLD	SCH	F	B	70	B-T-C	509.3
298	Little Paradise	NFLD	SCH	F	C	202	B-SG	143.6
300	Little St. Lawrence	NFLD	SCH	F	C	201	B-SG	63.2
301	Logy Bay	NFLD.	SCH	F	C	762	S J E	
302	Long Beach	NFLD	SCH	F	C	72	B-T-C	
303	Long Cove	NFLD	SCH	F	C	138	B-T-C	120.5
305	Long Pond/Manuels - Inner Pond	NFLD	SCH	R	A	743	S J E	452.4
306	Lord's Cove	NFLD	SCH	F	C	203	B-SG	265.8
308	Low Point	NFLD	SCH	F	C	73	B-T-C	
310	Lower Island Cove	NFLD	SCH	F	C	74	B-T-C	124.0
311	Lower Lance Cove	NFLD	SCH	F	C	75	B-T-C	211.5
312	Lumsden (North)	NFLD	SCH	F	C	362	G-T	277.1
313	Lumsden South	NFLD	SCH	F	B	363	G-T	600.2
314	Lushes Bight	NFLD	SCH	F	C	487	G-T	85.6
564	Makkovik	NFLD	SCP	F	A	490	GFWBL	
317	Mall Bay	NFLD	SCH	F	C	830	S J W	80.3
290	Marystown (Little Bay)	NFLD	SCH	F	C	249	B-SG	1486.7
322	Marysvalle	NFLD	SCX	F	D	756	S J E	
323	McCallum - Slipway	NFLD	SCH	F	B	208	B-SG	355.8
325	Melrose	NFLD	SCH	F	C	77	B-T-C	

HARBOUR CODE	LOCATION	REG	RESP	USE	CLASS	COST CODE	CNSTY CODE	VESSEL LENGTHS (metres)
570	Merashien	NFLD	SCH	F	C	258	B-SG	88.0
326	Middle Arm (Notre Dame Bay)	NFLD	SCH	F	C	550	GFWBL	422.9
327	Middle Brook	NFLD	SCH	F	D	364	G-T	
328	Miles Cove	NFLD	SCH	F	C	365	G-T	114.0
329	Miller's Passage	NFLD	SCX	F	D	209	B-SG	
330	Milton	NFLD	SCH	F	C	78	B-T-C	
331	Ming's Bight	NFLD	SCH	F	C	492	GFWBL	300.0
737	Monkstown	NFLD	SCH	F	C	278	B-SG	
333	Moreton's Harbour	NFLD	SCH	F	C	366	G-T	309.2
334	Mortier	NFLD	SCH	F	C	210	B-SG	
335	Mose Ambrose	NFLD	SCH	F	C	251	B-SG	
336	Mosquito	NFLD	SCX	F	D	832	S J W	
337	Mount Arlington Heights	NFLD	SCH	F	C	833	S J W	109.6
338	Mount Carmel	NFLD	SCX	F	D	834	S J W	
339	Musgrave Harbour	NFLD	SCH	F	A	367	G-T	964.6
340	Musgravetown	NFLD	SCH	F	C	80	B-T-C	
343	New Bonaventure	NFLD	SCH	F	C	81	B-T-C	177.4
344	New Chelsea	NFLD	SCH	F	C	82	B-T-C	82.8
345	New Harbour	NFLD	SCH	F	C	83	B-T-C	331.2
346	New Melbourne	NFLD	SCH	F	C	85	B-T-C	
347	New Perlican	NFLD	SCH	F	C	86	B-T-C	114.7
348	Newmans Cove	NFLD	SCH	F	C	84	B-T-C	84.1
349	Newstead	NFLD	SCH	F	C	368	G-T	
350	Newtown	NFLD	SCH	F	B	369	G-T	472.6
351	Nippers Harbour	NFLD	SCH	F	B	524	GFWBL	520.6
353	Norman's Cove	NFLD	SCH	F	D	87	B-T-C	

HARBOUR CODE	LOCATION	REG	RESP	USE	CLASS	COST CODE	CNSTY CODE	VESSEL LENGTHS (metres)
356	North Harbour	NFLD	SCH	F	C	275	B-SG	379.0
357	North Harbour	NFLD	SCH	F	C	835	S J W	
358	Northern Bay	NFLD	SCH	F	C	88	B-T-C	
359	O'Donnells	NFLD	SCH	F	C	836	S J W	324.1
360	Ochre Pit Cove	NFLD	SCH	F	C	89	B-T-C	186.1
361	Oderin	NFLD	SCH	F	C	212	B-SG	
362	Offer Wadham Islands	NFLD	SCX	F	D	371	G-T	
363	Old Bonaventure	NFLD	SCH	F	C	90	B-T-C	170.2
364	Old Perlican	NFLD	SCH	F	A	91	B-T-C	1332.6
365	Old Shop	NFLD	SCH	F	C	92	B-T-C	85.2
366	Open Hall	NFLD	SCH	F	C	93	B-T-C	110.9
367	Our Harbour	NFLD	SCX	F	D	372	B-SG	
369	Pacquet	NFLD	SCH	F	B	495	GFWBL	503.0
370	Parkers Cove	NFLD	SCH	F	C	213	B-SG	96.3
373	Paul Island	NFLD	SCX	F	D	373	G-T	
374	Peter's River	NFLD	SCH	F	C	837	S J W	128.1
376	Petley	NFLD	SCH	F	C	94	B-T-C	205.9
377	Petty Harbour	NFLD	SCH	F	B	838	S J W	640.1
378	Phillips Head	NFLD	SCH	F	C	374	G-T	24.4
380	Pilley's Island	NFLD	SCX	F	D	498	G-T	
383	Placentia	NFLD	SCH	F	B	839	SJW	
384	Plate Cove East	NFLD	SCH	F	C	95	B-T-C	161.8
385	Plate Cove West	NFLD	SCH	F	C	96	B-T-C	352.1
386	Pleasantview (Paradise)	NFLD	SCH	F	C	375	G-T	
387	Point au Gaul	NFLD	SCH	F	C	218	B-SG	161.8
389	Point Crewe	NFLD	SCH	F	D	220	B-SG	

HARBOUR CODE	LOCATION	REG	RESP	USE	CLASS	COST CODE	CNSTY CODE	VESSEL LENGTHS (metres)
391	Point La Haye	NFLD	SCH	F	D	840	S J W	
392	Point Lance	NFLD	SCH	F	C	841	S J W	73.2
393	Point Leamington	NFLD	SCH	F	C	376	G-T	216.3
396	Pool's Cove-Slipway/Slipway Gu	NFLD	SCH	F	C	273	B-SG	319.8
397	Pool's Island	NFLD	SCX	F	D	377	G-T	
398	Popes Harbour	NFLD	SCH	F	D	97	B-T-C	
399	Port Albert	NFLD	SCH	F	C	378	G-T	132.5
400	Port au Bras	NFLD	SCH	F	C	221	B-SG	107.4
402	Port Blandford	NFLD	SCH	F	C	100	B-T-C	
403	Port de Grave	NFLD	SCH	F	A	98	B-T-C	1084.3
405	Port Kirwan	NFLD	SCH	F	C	842	S J W	166.4
407	Porterville	NFLD	SCH	F	C	499	G-T	
408	Portland	NFLD	SCH	F	D	99	B-T-C	
410	Portugal Cove South	NFLD	SCH	F	C	844	S J W	223.6
409	Portugal Cove - Bridge/Slipway/W	NFLD	SCH	F	B	761	S J E	341.2
411	Pouch Cove	NFLD	SCH	F	C	747	S J E	201.3
412	Pound Cove	NFLD	SCH	F	C	380	G-T	
414	Princeton	NFLD	SCH	F	C	103	B-T-C	228.8
565	Punchbowl	NFLD	SCH	F	B	565	GFWBL	
415	Pushthrough	NFLD	SCX	F	D	222	B-SG	
416	Quidi Vidi	NFLD	SCH	F	C	748	S J E	121.6
417	Quirpon	NFLD	SCH	F	B	500	GFWBL	552.2
418	Ragged Harbour	NFLD	SCH	F	D	381	G-T	
421	Ramea	NFLD	SCH	F	B	223	B-SG	414.1
422	Rattling Brook	NFLD	SCH	F	C	502	GFWBL	18.3
424	Red Cliff	NFLD	SCH	F	D	104	B-T-C	

HARBOUR CODE	LOCATION	REG	RESP	USE	CLASS	COST CODE	CNSTY CODE	VESSEL LENGTHS (metres)
425	Red Cove	NFLD	SCH	F	D	225	B-SG	
426	Red Harbour	NFLD	SCH	F	C	224	B-SG	261.9
427	Red Head Cove	NFLD	SCH	F	C	105	B-T-C	143.6
429	Redlands	NFLD	SCX	F	D	916	B-T-C	
431	Reginaville	NFLD	SCX	F	D	749	S J W	
432	Rencontre East-Slipway/Breastwork	NFLD	SCH	F	C	226	B-SG	252.3
433	Renews	NFLD	SCH	F	B	845	S J W	486.6
435	Riverhead	NFLD	SCH	F	C	846	S J W	135.9
436	Robert's Arm	NFLD	SCH	F	C	506	G-T	176.0
440	Round Harbour	NFLD	SCX	F	D	279	B-SG	
441	Round Harbour	NFLD	SCH	F	C	504	GFWBL	222.2
442	Rushoon	NFLD	SCH	F	C	229	B-SG	123.3
446	Salvage	NFLD	SCH	F	B	382	G-T	602.5
447	Samson's Island	NFLD	SCX	F	D	383	G-T	
448	Sandy Cove	NFLD	SCH	F	D	384	G-T	
451	Sandyville	NFLD	SCH	F	C	451	B-SG	
453	Seal Cove	NFLD	SCH	F	C	236	B-SG	435.7
455	Seal Cove	NFLD	SCH	F	D	751	S J E	
454	Seal Cove (White Bay)	NFLD	SCH	F	C	510	GFWBL	202.2
457	Seldom Come By	NFLD	SCH	F	B	385	G-T	524.8
459	Ship Cove	NFLD	SCH	F	C	111	B-T-C	
462	Ship Harbour	NFLD	SCH	F	C	852	S J W	231.2
466	Shoe Cove Bight	NFLD	SCX	F	D	512	GFWBL	
467	Shoe Cove Brook	NFLD	SCH	F	B	511	GFWBL	342.2
468	Sibley's Cove	NFLD	SCH	F	C	112	B-T-C	170.6
469	Smith's Harbour	NFLD	SCH	F	C	513	GFWBL	316.8

HARBOUR CODE	LOCATION	REG	RESP	USE	CLASS	COST CODE	CNSTY CODE	VESSEL LENGTHS (metres)
566	Smokey	NFLD	SCH	F	B	563	GFWBL	
470	Snooks Arm	NFLD	SCH	F	C	515	GFWBL	100.0
471	Sop's Arm (Budden's Tickle)	NFLD	SCH	F	C	517	GFWBL	381.3
472	Sops Island	NFLD	SCX	F	D	567	GFWBL	
473	South East Bight	NFLD	SCH	F	C	238	B-SG	300.3
474	South River	NFLD	SCH	F	D	114	B-T-C	
475	Southern Harbour	NFLD	SCH	F	B	855	S J W	635.0
476	Southport	NFLD	SCH	F	B	113	B-T-C	434.5
477	Spaniard's Bay	NFLD	SCH	F	C	115	B-T-C	118.5
478	Spencer's Dock (Pilley's Island)	NFLD	SCH	F	D	389	G-T	
479	Spillars Cove	NFLD	SCH	F	C	116	B-T-C	
481	Spoon Cove	NFLD	SCH	F	C	117	B-T-C	
740	Square Islands	NFLD	SCH	F	B	563	GFWBL	
483	St. Anthony Bight	NFLD	SCH	F	C	507	GFWBL	79.1
482	St. Anthony - Fishermen's Wharf	NFLD	SCH	F	A	549	GFWBL	901.9
484	St. Bernard's	NFLD	SCH	F	C	234	B-SG	414.2
486	St. Brendan's (Shoal & Dock Cove)	NFLD	SCH	F	B	390	G-T	393.5
487	St. Bride's	NFLD	SCH	F	B	847	S J W	551.6
488	St. Carol's	NFLD	SCH	F	C	518	GFWBL	86.1
489	St. Chads	NFLD	SCH	F	C	391	G-T	
492	St. Jacques	NFLD	SCH	F	C	262	B-SG	159.9
494	St. John's - Ft. Artherst Slipway	NFLD	SCH	F	A	866	S J W	2655.4
495	St. Jones Within	NFLD	SCH	F	C	106	B-T-C	103.4
497	St. Joseph's	NFLD	SCH	F	C	848	S J W	154.4
639	St. Lewis	NFLD	SCH	F	A	527	GFWBL	
499	St. Lawrence - Fishermen's Wharf	NFLD	SCH	F	A	163	B-SG	1099.6
500	St. Lunaire (White Bay)	NFLD	SCH	F	B	508	GFWBL	347.4

HARBOUR CODE	LOCATION	REG	RESP	USE	CLASS	COST CODE	CNSTY CODE	VESSEL LENGTHS (metres)
501	St. Mary's	NFLD	SCH	F	C	861	S J W	349.5
689	St. Patricks	NFLD	SCH	F	D	509	GFWBL	
503	St. Phillips	NFLD	SCH	F	C	750	S J E	108.7
504	St. Shotts	NFLD	SCH	F	C	849	S J W	243.6
506	St. Vincent's	NFLD	SCH	F	D	851	S J W	
507	Stag Harbour	NFLD	SCH	F	C	392	G-T	
508	Stanhope	NFLD	SCH	F	D	393	G-T	
510	Summerford	NFLD	SCH	F	A	394	G-T	1047.8
512	Summerville	NFLD	SCH	F	B	108	B-T-C	605.3
513	Sunnyside	NFLD	SCH	F	C	109	B-T-C	335.3
514	Sweet Bay	NFLD	SCH	F	C	110	B-T-C	93.9
515	Swift Current	NFLD	SCH	F	C	241	B-SG	69.7
516	Tacks Beach	NFLD	SCX	F	D	242	B-SG	
517	Thornlea	NFLD	SCH	F	C	908	B-T-C	76.9
691	Tickle Cove	NFLD	SCH	F	B	140	B-T-C	
519	Tilting	NFLD	SCH	F	B	395	G-T	407.4
520	Tizzard's Harbour	NFLD	SCH	F	C	396	G-T	206.6
521	Torbay	NFLD	SCH	F	C	753	S J E	241.0
522	Tors Cove	NFLD	SCH	F	C	856	S J W	170.4
523	Trepassey	NFLD	SCH	F	A	857	S J W	1889.6
524	Trinity	NFLD	SCH	F	C	119	B-T-C	286.0
525	Trinity	NFLD	SCH	F	D	398	G-T	
526	Trinity East	NFLD	SCH	F	C	120	B-T-C	169.9
527	Triton West	NFLD	SCH	F	A	399	G-T	1263.6
530	Trouty	NFLD	SCH	F	C	121	B-T-C	146.6
531	Twillingate (Shoal Tickle)	NFLD	SCH	F	A	400	G-T	2327.3

HARBOUR CODE	LOCATION	REG	RESP	USE	CLASS	COST CODE	CNSTY CODE	VESSEL LENGTHS (metres)
534	Upper Gullies	NFLD	SCX	F	D	755	S J E	
536	Upper Island Cove	NFLD	SCH	F	C	123	B-T-C	300.0
538	Valleyfield	NFLD	SCH	F	A	410	G-T	800.0
539	Virgin Arm	NFLD	SCH	F	C	404	G-T	252.7
540	Wadham Islands	NFLD	SCX	F	D	434	G-T	
543	Western Bay	NFLD	SCH	F	C	125	B-T-C	87.8
544	Westport	NFLD	SCH	F	C	526	GFWBL	
545	Whale's Gulch	NFLD	SCH	F	B	407	G-T	418.0
546	Whiteway	NFLD	SCH	F	C	128	B-T-C	202.3
604	Wild Bight (Beachside)	NFLD	SCP	F	C	520	GFWBL	390.5
548	Wild Cove	NFLD	SCH	F	B	532	GFWBL	493.9
549	Williams Harbour	NFLD	SCH	F	C	521	GFWBL	
550	Williamsport	NFLD	SCH	F	D	522	GFWBL	
552	Winterton	NFLD	SCH	F	C	129	B-T-C	201.3
553	Witless Bay	NFLD	SCH	F	C	858	S J W	243.8
557	Woody Island	NFLD	SCH	F	C	246	B-SG	
559	Wreck Cove	NFLD	SCH	F	C	247	B-SG	223.1

APPENDIX 3 *

MINIMUM SERVICES OFFERED

<u>ITEM</u>	<u>HARBOUR CLASS</u>			
	<u>A</u>	<u>B</u>	<u>C</u>	<u>D</u>
1. General Guidelines	X	X	X	X
2. Approach Channels	X	X	X	
3. Harbour Entrance	X	X	X	
4. Depth of Water	X	X	X	
5. Allowable Agitation within Harbours	X	X	X	
6. Berth Area and Mooring Basins	X	X	X	
7. Wharf				
7.1 Loads	X	X	X	
7.2 Width	X	X	X	
7.3 Elevation	X	X	X	
7.4 Deck	X	X	X	
7.5 Gangways	X	X	X	
8. Fenders	X	X	X	
9. Mooring Devices	X	X	X	
10. Ladders	X	X	X	
11. Launching Facilities				
11.1 Launching Ramps & Skidways	X	X		
11.2 Launching Ramps	X	X		
11.3 Skidways	X	X		
11.4 Grounding Out Platforms	X	X		
11.5 Straddle Carriers	X	X		
11.6 Marine Railways	X	X		

APPENDIX 3

-2-

<u>ITEM</u>	<u>HARBOUR CLASS</u>			
	<u>A</u>	<u>B</u>	<u>C</u>	<u>D</u>
12. Services				
12.1 Lighting and Electrical Systems	X	X	X	
12.2 Water Supply	X	X		
12.3 Fueling Facility	X			
12.4 Parking	X	X	X	
12.5 Sanitary Provisions	X	X		
12.6 Fire Fighting	X	X		
12.7 Fish Handling Equipment	X	X		
12.8 Gear Handling Equipment	X	X	X	
12.9 Ice	X	X		
12.10 Bait Sheds	X			
12.11 Gear Storage Facilities	X			
12.12 Safety equipment	X			
12.13 Signs	X	X		
12.14 Service Area	X	X		

* Reproduced from Harbour Maintenance Management System - Guidelines of Accommodations

APPENDIX 4

CONDITION RATING SCALE
RELATED TO PROJECT TYPE

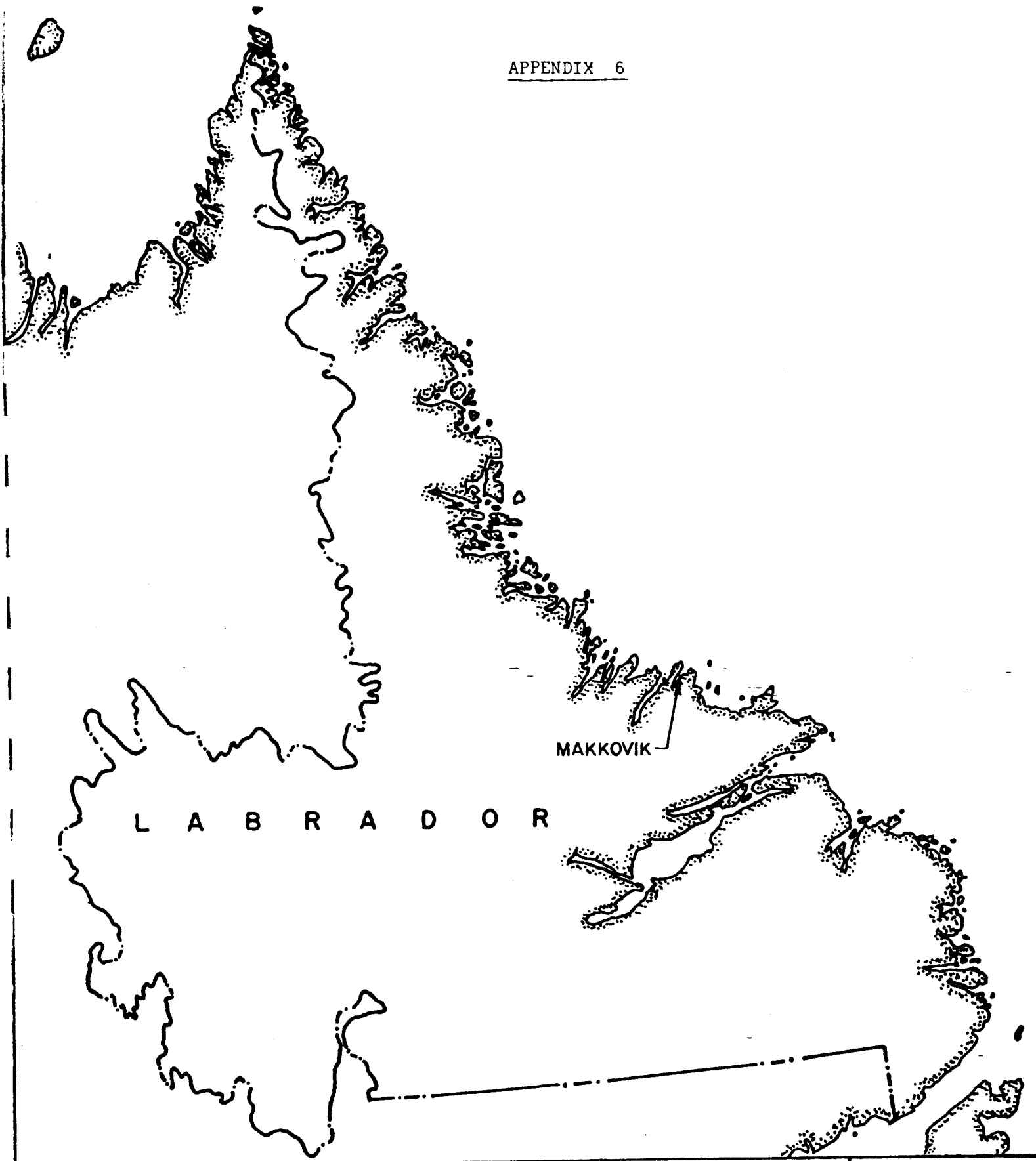
FACILITY/ COMPONENT CONDITION	PROJECT TYPE				UPGRADING	ESTIMATED SERVICE LIFE (Yrs)	YEAR BEFORE WHICH PROJECT ACTION* SHOULD BEGIN
	ESSENTIAL		PREVENTIVE MAINTENANCE				
	REPAIRS	NEW FACILITIES	SHORT TERM	LONG TERM			
1. Unsafe	x	x			x	0	1
2. Poor			x	x	x	3	2
3. Fair			x	x	x	5	3
4. Good				x	x	10	5
5. Very Good					x	20	-

* Project Action: (a) Preventive Maintenance Inspections, or
(b) Preliminary Engineering, or
(c) Construction

APPENDIX 5

EXAMPLES OF PROJECT TYPES

PROJECT TYPES	CHANNELS, BASINS	BREAKWATERS	WHARVES
EW: Repairs	redredging as an immediate requirement, to allow vessels to enter, leave or moor	repair a breach to stop excessive wave agitation which prevents mooring and navigation	repair structure or component which has failed and creates a safety hazard
New Facilities	minimum new dredging as an immediate requirement to allow vessels to enter, leave or moor	minimum new breakwater to stop excessive wave agitation which prevents mooring and navigation	minimum new wharfage to overcome a serious deficiency which creates a safety hazard
PM: Short Term	local dredging to ensure that infilling does not excessively hinder operations (site inspection, user reports, and local soundings)	replacement of armour units to prevent a breach (slump, or loss of individual units occurring) (visual inspection and user reports)	repair or replace deteriorated components to maintain soundness for full continuous operations (visual inspection)
Long Term	planned periodic dredging to ensure best operating conditions and cost-effectiveness (monitoring and siltation forecasts)	replacement of structure to ensure long term integrity and effectiveness (comprehensive solution from full study; wave hindcast, model study, underwater inspection)	replace, reconstruct structure to ensure long term integrity and effectiveness ("redesign" of structure from wave hindcast, forces, ice, etc., and from foundation inspection and nondestructive testing concrete, steel)
UG: Upgrading	dredge new areas to add berthing mooring capacity or to straightened channels, etc. for improved/expanded operations or to meet guidelines of accommodation	breakwater construction to protect an enlarged harbour; to control wave agitation to meet guidelines of accommodation; to ensure least siltation	build new structure to accommodate changing fleet size or a particular new requirement or to meet guidelines of accommodation



FISHERIES & OCEANS

SMALL CRAFT HARBOURS BRANCH

NEWFOUNDLAND REGION

Drawing Title:

PROJECT EVALUATION

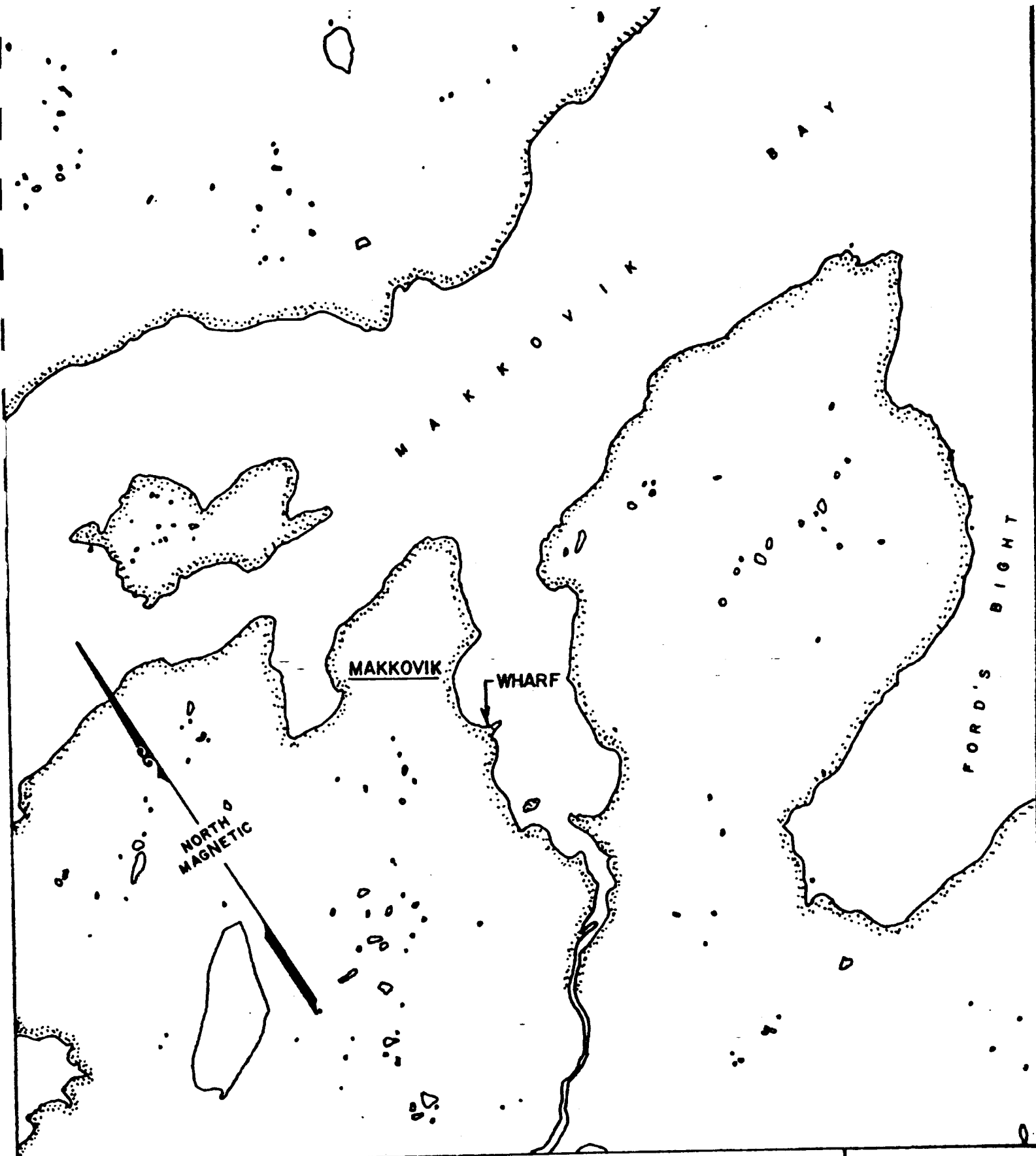
MAKKOVIK

Drawn by:

Date:

Scale:

Plan No.:



FISHERIES & OCEANS

SMALL CRAFT HARBOURS BRANCH

NEWFOUNDLAND REGION

Drawing Title:

MAKKOVIK
LOCATION CHART

Drawn by: H. A. F.

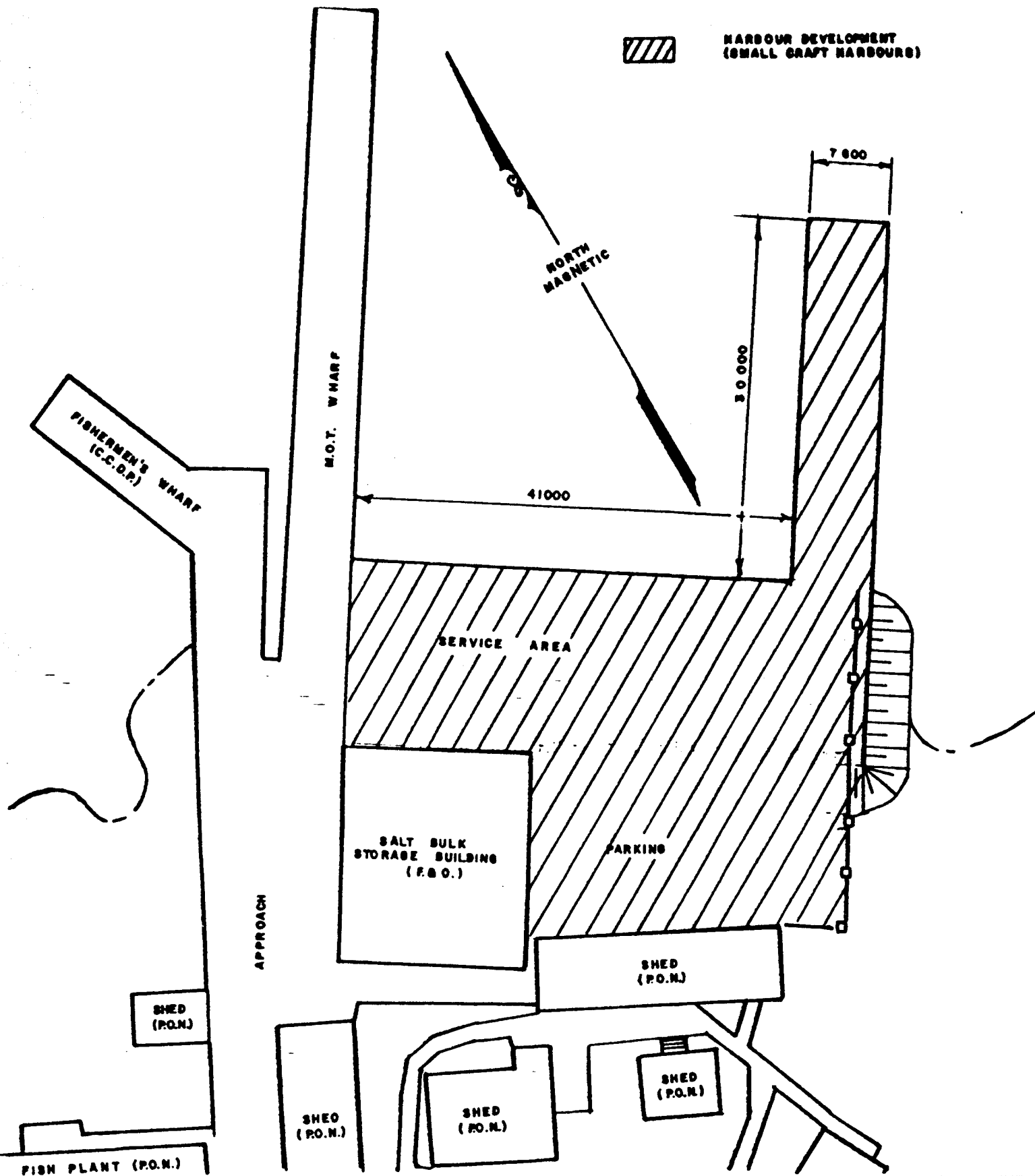
Date: MAY/86

Scale: 1:50 000

Plan No.:



HARBOUR DEVELOPMENT
(SMALL CRAFT HARBOURS)



 **FISHERIES & OCEANS**
 SMALL CRAFT HARBOURS BRANCH
 NEWFOUNDLAND REGION

Drawing Title:
MAKKOVIK
HARBOUR DEVELOPMENT

Drawn by: H.A.F.
 Date: DEC./85
 Scale: 1:500
 Plan No.:



Project Evaluation

Makkovik - Harbour Development (SRCPP)
Total Project Cost \$785,800.00 including A & E Services

1. Function/Need

The new facility at Makkovik, Labrador, consists of a 41 metre long marginal wharf with a 17.5 metre wide concrete surfaced service area and a 30 metre long by 7.6 metre wide concrete decked finger pier. Lighting, electrical receptacles and jib crane foundations are provided. The complex is designed to accommodate operational and non-operational berthage.

Prior to the construction of this facility, Small Craft Harbours Branch had no infrastructure at this harbour and the inshore fishermen were forced to use a small inadequate wharf built under a job creation program.

2. Technical

As a result of a sub-soil investigation, it was determined that the most cost effective design was a treated timber stepped cribwork marginal wharf with a rock and gravel filled service area behind and a treated timber cribwork finger pier, all with concrete deck. Due to the existence of unsuitable material at the outer end of the finger pier (approximately 9 metres long) it was necessary to excavate this material and place a rock mattress to provide a stable foundation for the cribwork. Dredging, consisting of Class B material, was carried out in the basin to provide adequate water depth (-3.0 metres) for the longliner class fishing vessel.

3. Cost

PWC Contract Estimate	\$735,000.00
Final Contract Cost	\$700,779.50
Original Contract Amount	\$744,425.00
Decrease	\$ 43,645.50 or 5.9%

Project Cost Summary:

Contract	\$700,779.50
A & E Services	\$ 85,020.50
Total Cost	\$785,800.00

Change Order No. 1 (+) \$1,100.00

Due to site conditions, changes had to be made to the salt water intake pipe and waste drain to allow for draining and installation of a check valve in an accessible location.

Change Order No. 2 (+) \$2,875.00

An error in the contract drawings regarding the location of the existing electrical room in the salt bulk storage building resulted in extra work extending P.V.C. conduit.

Change Order No. 3 (-) \$47,620.50

This change order covers normal variation between estimated quantities and actual quantities. The major variation was a reduction in treated timber cribwork from 2500 m³ to 2248 m³ resulting in a decrease of \$45,360.00. This was caused by the fact that the rock elevation on the inside portion of the marginal cribwork was higher than anticipated thereby reducing the amount of cribwork required; also no settlement was experienced although 300 mm had been estimated.

4. Schedule:

April 19, 1984	Final plans for approval were received from P.W.C.
May 1, 1984	Permission was granted to proceed with tender call.
May 4, 1984	Tenders called.
May 25, 1984	Tenders closed. Seven (7) bids were received ranging from \$744,425.00 to \$1,887,620.00.
June 8, 1984	Contract awarded to lowest bidder with a completion date of October 26, 1984.
Sept. 22, 1985	Actual completion date.

P.W.C. felt that the late completion was due to the contractor's inefficient operation and consequently he was assessed for A&E costs covering the period July 15, 1985 to Sept. 22, 1985 (\$12,769.21). This covers the full period the contractor was on site in 1985. As far as Small Craft Harbours Branch program is concerned, the late completion had the impact of forcing fishermen

to use their small inadequate facility for another fishing season.

5. Testing & Inspection

An extensive sub-soil investigation consisting of twelve (12) bore holes, and a sounding and topographic survey were carried out at the site prior to implementation of this project. A cost effective design resulted from the information ascertained from these investigations. Unfortunately, the borings did not cover the area where the marginal cribwork was constructed and consequently there was a large variation between the estimated and actual treated cribwork quantity. Fortunately, in this case the discrepancy worked in our favour and resulted in a decrease in the final cost of the job.

Project inspection was carried out by a qualified resident P.W.C. inspector with periodic visits from a senior technical officer; to ensure adherence to the plans and specifications. The laboratory testing of concrete field cylinders for compressive strength was done by a consultant firm. This company also designed the concrete mix for the project based on aggregate sources available at Makkovik. Slump and air entrainment tests were conducted on site by the P.W.C. inspector. As a general comment, the inspection was adequate for this project and the quality of work was good overall.

6. Additions Required

Since this is a fairly exposed location, wave agitation may be a problem. This aspect will have to be monitored over the next couple of years as the facility is utilized, and possibly a wave climate study should be carried out. If a major problem is identified, a breakwater will be proposed in a future years program to provide adequate protection.

7. Conclusions/Other

This project was carried out "in house" by P.W.C. The cost of A&E services was 10.8% of the overall project cost which is considered quite reasonable. Feedback from the fishermen regarding the new facility at Makkovik has been favourable to date and it is felt that the project meets the intended requirement for this harbour.

Attachments:

- Final Certificate of Completion
- Cost Breakdown
- Client Acceptance
- Change Orders "
- Photos
- Sketch

APPENDIX 7

REGULAR PROGRAM PROJECTS 1985/86

<u>LOCATION</u>	<u>CONST.</u>	<u>DESCRIPTION</u>	<u>PREV. EXPEND.</u>	<u>1985/86 EXPEND</u>	<u>COMPLETION DATE</u>
<u>204</u>					
Bay Roberts	B T C	C/O Wharf Repairs	0.6	108.1	12 Aug 1985
Carbonear	B T C	C/O Wharf Repairs	51.3	166.6	19 Aug 1985
Conche	GF WB L	C/O Wharf Repairs	23.1	38.8	30 Sept 1985
Fortune	B SG	C/O Wharf Repairs	15.6	8.3	03 May 1985
LaScie	GF WB L	C/O Deck Repairs	15.5	58.2	29 July 1985
New Chelsea	B T C	C/O Wharf Repairs	17.2	77.4	19 June 1985
Arnolds Cove	S J W	Wharf Repairs	-	44.0	17 Oct 1985
Bay de Verde	B T C	Fender Repairs	-	79.6	31 Mar 1986
Branch	S J W	Dredging	-	48.2	26 June 1985
Bonavista	B T C	Engineering Study	-		
Branch	S J W	West Breakwater Repairs	-	42.0	21 Nov 1985
Elliston	B T C	Wharf Repairs	-	2.8	31 Mar 1985
Fogo	G T	Road Reconstruction	-	95.8	28 Aug 1985
Lower Island Cove	B T C	Slipway Repairs	-	17.1	18 Sept 1985
Lumsden North	G T	Headblock	-	55.3	13 Sept 1985
Nippers Harbour	GF WB L	Wharf Repairs	-	10.7	25 July 1985
Old Perlican	B T C	Electrical System Reconst.	-	16.3	19 June 1985
Petty Harbour	S J W	Dredging	-	26.0	13 Aug 1985
Placentia	S J W	Dredging	-	20.5	31 Mar 1986
<u>304</u>					
Bell Island	S J E	Fender Reconstruction	-	13.2	04 June 1986
Bonavista	B T C	C/O Wharf Reconstruction	414.6	343.5	30 July 1986
Fogo	G T	Road Paving	-	73.3	10 Oct 1985
Gooseberry Cove	B T C	C/O Breakwater Construction	379.5	373.4	31 Oct 1985
Greenspond	G T	Wharf Reconstruction	-	168.0	20 June 1986
Makkovik	GF WB L	C/O Wharf Construction	549.8	239.3	15 Oct 1985
Nippers Harbour	GF WB L	C/O Breakwater Construction	54.8	286.7	03 Oct 1985
Seldom	G T	Approach Reconstruction	-	31.2	15 Jan 1986
Smokey	GF WB L	C/O Wharf Reconstruction	946.1	483.0	15 Oct 1985

APPENDIX 7

REGULAR PROGRAM PROJECTS 1985/86

<u>LOCATION</u>	<u>CONST.</u>	<u>DESCRIPTION</u>	<u>PREV. EXPEND.</u>	<u>1985/86 EXPEND</u>	<u>COMPLETION DATE</u>
<u>MINOR WORKS (DPW)</u>					
St. Brides	S J W	C/O Dredging	216.7	275.6	30 Sept 1985
Bonavista	B T C	C/O Wharf Repairs	86.2	89.3	03 July 1985
<u>337</u>					
Brownsdale	B T C	C/O Slipway Repairs	2.6	26.3	31 Mar 1986
Cape Freels N	G T	C/O Wharf Repairs	59.0	89.0	07 June 1985
Foxtrap	S J E	C/O Wharf Repairs	0.2	55.5	26 June 1985
Lumsden North	G T	C/O Wharf Repairs	1.9	77.8	07 June 1985
O'Donnells	S J E	C/O Approach Repairs	0.3	24.5	10 June 1985
Port de Grave	B T C	C/O Breakwater Repairs	18.2	179.5	08 July 1985
Red Head Cove	B T C	C/O Wharf Repairs	3.0	2.6	30 Nov 1985
Ship Cove	B T C	C/O Wharf Repairs	0.1	19.4	19 June 1985
Sibleys Cove	B T C	C/O Wharf Repairs	15.2	45.2	19 June 1985

APPENDIX 8

JOINT SCH-JOB CREATION PROJECTS (1984/85/86)

<u>LOCATION</u>	<u>CONST.</u>	<u>PROJECT</u>	<u>SCH EXPEND. 1985/86</u>	<u>PERCENT COMPLETE</u>
Bay L'Argent	B SG	Fisheries Improvements	2,708.0	100
Brownsdale	B T C	Slipway Reconstruction	3,087.0	100
Dildo	B T C	Slipway Repairs	2,428.0	100
Garnish	B SG	Boat Basin	1,760.0	100
Hickmans Harbour	B T C	Marginal Wharf	12,456.0	100
Hodges Cove	B T C	Marine Project	327.0	100
Jobs Cove	B T C	Slipway Replacement	500.0	100
Little Bay	B SG	Wharf (Phase II	5,700.0	100
Little Bay East	B SG	Wharf Extension	1,511.0	100
Port au Bras	B SG	Breakwater Repairs	49.0	100
St. Bernard's	B SG	Slipway Construction	4,289.0	100
Sibley's Cove	B T C	Slipway Improvements	12,902.0	100
Garden Cove	B SG	Slipway Construction	857.0	100
Islington	B T C	Slipway Repairs	10,753.0	100
Pie Duck Cove	B SG	Slipway Repairs	1,969.0	100
Point au Gaul	B SG	Slipway Repairs	8,205.0	100
Woody Island	B SG	Wharf Reconstruction	6,812.0	100
Chance Cove	B T C	Cribwork to Wharf	8,951.0	100
Davis Cove	B SG	Wharf (Phase II)	300.0	100
Gooseberry Cove	B T C	Marine Improvements	248.0	100
Whiteway	B T C	Slipway Construction	6,098.0	100
Aquaforte	S J W	Slipway Repairs & Canopy	520.0	100
Bauline South	S J W	Slipway Repairs	282.0	100
Bay Bulls	S J W	Harbour Development	33,093.0	100
Biscayne Cove	S J E	Landing Facility (Ph. 2)	12,420.0	100
Conception Harbour	S J E	Breakwater Ext/Slipway	607.0	100
Fairhaven	S J W	Wharf Completion	559.0	100
Ferryland	S J W	Wharf	259.0	100
Forest Field	S J W	Launching Ramp	6,499.0	100
Foxtrap	S J E	Breakwater Extension	7,685.0	100
Little Hr. East	S J W	Wharf Replacement	21,210.0	100
Marysvale	S J E	Fishermen's Project	947.0	100
Little St. Lawrence	B SG	Community Stage	483.0	100

APPENDIX 8

JOINT SCH-JOB CREATION PROJECTS (1984/85/86)

<u>LOCATION</u>	<u>CONST.</u>	<u>PROJECT</u>	<u>SCH EXPEND. 1985/86</u>	<u>PERCENT COMPLETE</u>
Merasheen	B SG	Marine Improvements	333.0	100
Peter's River	S J W	Slipway Extension	3,140.0	100
Placentia	S J W	Marine Improvements	5,961.0	100
Port Kirwan	S J W	Wharf Construction	7,586.0	100
Renews	S J W	Wharf	21,701.0	100
St. Bride's	S J W	Breakwater	19,195.0	100
Spoon Cove	B T C	Wharf Repairs/Extension	5,654.0	100
Admirals Beach	S J W	Breakwater Repairs	1,230.0	100
Bay Bulls	S J W	Hr. Development (Ph. 2)	23,601.0	100
Pouch Cove	S J E	Slipway Repairs	26,080.0	100
Spaniards Bay	B T C	Wharf Reconstruction	21,495.0	100
Holyrood	S J E	Facility Improvements	2,378.0	100
Southern Harbour	S J W	Breakwater Upgrading	333.0	100
Beachside	GF WB L	Wharf Extension	2,270.0	100
Fleur de Lys	GF WB L	Wharf Extension	14,117.0	100
Hopedale	GF WB L	Slipway Repairs	7,161.0	100
Makkovik	GF WB L	Slipway Repairs	2,145.0	100
Quirpon	GF WB L	Wharf Extension	17,634.0	100
Smith's Harbour	GF WB L	Wharf Extension	19,153.0	100
Wild Cove	GF WB L	Wharf Extension	28,428.0	100
Leading Tickles	G T	Wharf Extension	24,586.0	100
Lower Jenkins Cove	G T	Wharf Extension	8,425.0	100
Bishop's Falls	G T	Warehouse Construction	19,804.0	100
Cape Freels	G T	Wharf Repairs	2,103.0	100
Greenspond	G T	Slipway	7,342.0	100
Ladle Cove	G T	Wharf Completion	27,080.0	100
Lumsden North	G T	Breakwater Reconstruction	45,021.0	100
Musgrave Harbour	G T	Slipway Reconstruction	20,755.0	100
St. Brendan's	G T	Slipway/Canopy Reconstr.	21,630.0	100
Bonavista	B T C	Slipway Reconstruction	45.0	100
Champney's West	B T C	Wharf Reconstruction	38,354.0	100

APPENDIX 8

JOINT SCH-JOB CREATION PROJECTS (1984/85/86)

<u>LOCATION</u>	<u>CONST.</u>	<u>PROJECT</u>	<u>SCH EXPEND. 1985/86</u>	<u>PERCENT COMPLETE</u>
Duntara	B T C	Wharf Completion	2,027.0	100
Keels	B T C	Slipway Reconstruction	6,118.0	100
Tickle Cove	B T C	Wharf Reconstruction	36,744.0	90
Ramea	B SG	Wharf Reconstruction	6,494.0	100
Wreck Cove	B SG	Slipway Extension	1,543.0	100
Canada Works General			160,000.0	

APPENDIX 9

JOINT SCH-JOB CREATION PROJECTS (1985/86/87)

<u>LOCATION</u>	<u>CONST.</u>	<u>PROJECT</u>	<u>SCH. EXPENDITURE</u>
<u>Special Response</u>			
Comfort Cove	G T	Winch House Constr./Winch Install.	6,442
Leading Tickles	G T	Wharf Extension	5,462
Twillingate	G T	Wharf Repairs	1,157
Virgin Arm	G T	Wharf Extension	2,513
Englee	GF WB L	Reconstruct Canal Sidewall	17,858
Greenspond	G T	Wharf Construction	13,826
Happy Adventure	G T	Gear Shed	3,090
Joe Batts Arm	G T	Slipway Construction	1,247
St. Vincent's	G T	Wharf Repairs	7,304
Valleyfield	G T	Wharf Repairs	8,812
King's Cove	B T C	Wharf Repairs/Slipway Rebuild	1,884
Plate Cove West	B T C	Wharf Repairs, Slipway Repairs & Ext.	7,488
Burgeo	B SG	Wharf Repairs	8,888
Grand Bank	B SG	Shoreline Cribbing	7,400
Green's Harbour	B-SG	Gear Shed Construction	3,100
Lawn	B-SG	Marginal Wharf	27,400
Old Perlican	B-T-C	Gear Shed Construction	20,300
Whiteway	B-T-C	Gear Shed Construction	19,500
Winterton	B-T-C	Wharf Extension	44,300
Admirals Cove	S J W	Wharf Extension	1,000
Argentia	S J W	Marginal Wharf Reconstruction	1,500
Avondale	S J E	Wharf Deck Replacement	2,000
Bay Bulls	S J W	Marginal Wharf Construction	3,000
Bay Roberts	S J W	Wharf Repairs and Extension	3,000
Brigus	B T C	Wharf Replacement	2,000
Brigus South	S J W	Wharf Deck Repairs	3,500
Bryants Cove	B T C	Wharf Approach Repairs	3,200
Fairhaven	S J W	Slipway Completion	600

APPENDIX 9

JOINT SCH-JOB CREATION PROJECTS (1985/86/87)

<u>LOCATION</u>	<u>CONST.</u>	<u>PROJECT</u>	<u>SCH. EXPENDITURE</u>
<u>Special Response (Continued)</u>			
Burnt Point	B T C	Wharf Upgrading	900
Bay de Verde	B T C	Facility Improvements	1,600
Foxtrap	S J E	Marginal Wharf Construction	6,000
Chance Cove	B T C	Slipway Reconstruction	1,600
Mt. Arlington Hts.	S J W	Slipway Construction	3,500
O'Donnells	S J W	Marginal Wharf Repairs	1,800
Peter's River	S J W	Deck Repairs	6,000
Port de Grave	B T C	Marginal Wharf & Repair Shed	16,200
Long Beach	B T C	Cribwork Ext. & Decking	1,200
Renews	S J W	Marginal Wharf Extension	5,600
Monkstown	B SG	Community Stage	800
St. Bride's	S J W	Breakwater Wharf Completion	200
Sunnyside	B T C	Wharf Repairs/Extension	1,800
Upper Island Cove	B T C	Marginal Wharf and Gear Shed	13,400
Holyrood	S J E	Cribwork/Wharf Completion	1,600
St. Mary's	S J W	Marginal Wharf Repairs	150
<u>Section 38</u>			
Dildo	B T C	Wharf Extension (Proposed)	93,400
Heart's Desire	B T C	Slipway Extension (Proposed)	5,000
Pie Duck Cove	B SG	Slipway Reconstruction (Proposed)	15,000
Little Bay	B SG	Wharf Completion/Launchway (Proposed)	10,000
Garden Cove	B SG	Deck Repairs (Proposed)	20,000
Burin	B SG	Deck Repairs (Proposed)	20,000
Portugal Cove South	S J W	Breakwater Wharf Repairs	90,100
Petit Forte	B SG	Wharf Extension	31,500
Trepassey	S J W	Facility Improvements	500

APPENDIX 9

JOINT SCH-JOB CREATION PROJECTS (1985/86/87)

<u>LOCATION</u>	<u>CONST.</u>	<u>PROJECT</u>	<u>SCH. EXPENDITURE</u>
<u>Job Development</u>			
Coachman's Cove	GF WB L	Canopy Construction	11,479
Goose Cove	GF WB L	Wharf Extension	88,700
Jackson's Arm	GF WB L	Wharf Rebuild	22,104
Comfort Cove	G T	Wharf Extension (Proposed)	65,095
Bonavista	B T C	Canal Reconstruction	69,354
Old Bonaventure	B T C	Wharf Repairs	3,701
Musgrave Harbour	G T	Wharf Construction (Proposed)	89,554
Tilting	G T	Slipway Construction	74,093
Grand Le Pierre	B SG	Slipway Construction	11,800
Harbour Mille	B SG	Slipway Repairs	6,500
Jacques Fontaine	B SG	Retaining Cribwork	9,000
New Harbour	B T C	Wharf Reconstruction	1,000
Northern Bay	B T C	Slipway Repairs & Wharf Construction	1,300
Lamaline	B SG	Cribwork Repairs	1,000
Fermeuse	S J W	Marginal Wharf Construction	80,100
Foxtrap	S J E	Breakwater Wharf Extension	26,100
Quidi Vidi	S J E	Slipway Construction	41,200
Hardware			63,000

APPENDIX 10

DREDGING PROJECTS UTILIZING DPW PLANT

<u>LOCATION</u>	<u>TYPE OF MATERIAL</u>	<u>VOLUME</u>	<u>TOTAL COST</u>
<u>Convoy #400</u>			
Jean de Baie	Wharf Demolition	1 unit	10,285
Bay L'Argent	Class "B" with Boulders	8275 CPM	302,830
Garnish	Class "B"	505 CPM	8,571
Trepassey	Wharf Removal Class "B" with Boulders	1 Unit 2100 CPM	73,279 89,563
Happy Adventure	Wharf Removal Class "B"	75% Unit 1750 CPM (Est)	69,479 17,370
<hr/>			
Total for convoy	Wharf Removals Class "B"	2.75 Unit 12,630 CPM	\$153,043 <u>418,334</u> \$571,377
<u>Convoy # 401</u>			
Petty Harbour	Class "A" Class "B"	1642 CMSM 626 CPM (Est)	\$167,900 18,656
Quidi Vidi	Removal of Boulders	1 area	2,678
Fort Amherst	Removal of Boulders	1 area	10,721
Old Perlican	Boulders - Class "A" Class "B"	872 CMSM 8186 CPM (Est)	242,434 450,234
<hr/>			
Total for Convoy	Removal of Boulders Class "A" and Measured Boulders Class "B"	2 areas 2514 CMSM 9828 CPM (Est)	\$13,399 410,334 <u>468,890</u> <u>892,623</u>
		TOTAL	<u>\$1,464,000</u>

APPENDIX 11

ADVANCE PLANNING ACTIVITIES TO MARCH 31, 1986

1. Aerial Photography

1	Argentia	34	Murray Harbour
2	Aspen Cove	35	Nain
3	Batteau	36	Old Perlican
4	Bay de Verde	37	Open Hall
5	Bay L'Argent	38	Packs Harbour
6	Black Tickle	39	Placentia
7	Boxey	40	Pools Cove
8	Cape Harrison	41	Port Hope Simpson
9	Cape St. Charles	42	Postville
10	Cartwright	43	Pinsent's Arm
11	Charlottetown, Labrador	44	Punchbowl
12	Coombs Cove	45	Rigolet
13	Davis Inlet	46	Sandy Hook
14	Domino	47	Seal Islands
15	Dover	48	Seldom
16	Fairhaven	49	Ship Harbour, Labrador
17	Fox Harbour (St. Lewis)	50	Smokey
18	Georges Cove	51	Snug Harbour
19	Gooseberry Cove	52	South East Bight
20	Grady	53	Southport
21	Grey River	54	Spotted Islands
22	Hants Harbour	55	Square Islands
23	Hawke Harbour	56	St. Anthony
24	Heart's Content	57	St. Bride's
25	Hopedale	58	Sunnyside
26	Jamestown	59	Tilting
27	Ladle Cove	60	Triangle
28	Little Harbour East	61	Upper Island Cove
29	Long Pond	62	Venison Tickle
30	Lumsden South	63	West Turnavik
31	Marys Harbour	64	Williams Harbour
32	Marystown (Little Bay)	65	Young's Harbour
33	Multa		

2. Mapping

1	Triton	6	Joe Batt's Arm
2	LaScie	7	St. Anthony
3	Branch	8	Canning's Cove
4	Admirals Beach	9	McCallum
5	O'Donnells	10	Herring Neck

APPENDIX 11

ADVANCE PLANNING ACTIVITIES TO MARCH 31, 1986

3. Sounding and Topographic Surveys

1	Sibley's Cove	8	Gaultois
2	Lower Island Cove	9	Burgeo
3	Grates Cove	10	Twillingate
4	Triton (2 sites)	11	Bridgeport
5	Smiths Harbour	12	St. Shotts
6	Brent's Cove	13	St. Anthony
7	Baine Harbour	14	Griquet

All completed

4. Special Study Areas

St. Anthony	Harbour Development
Bonavista	Hydraulic Model
Bonavista	O'Deas Pond Canal

APPENDIX 12

SMALL CRAFT HARBOURS BRANCH
PROPERTY ACQUISITIONS UNDERWAY

to be used Savings

<u>LOCATION</u>	<u>TOTAL SPENT</u> <u>March 31, 1986</u>	<u>ESTIMATE COMPLETION</u> <u>DATE</u>
Admirals Cove	4,499.03	1987
Aquaforte	364.08	1985
Arnold's Cove	9,910.00	1987
Battle Harbour	4,680.20	1986
Bauline	10,873.00	1987
Bay Bulls	1,278.00	1986
Belleoram	652.00	1986
Black Tickle	786.00	1986
Bonavista (Canal)	311.00	1987
Bonavista (Expropriation)	23,294.00	
Bonavista (Mockbeggar)	277.00	
Branch	14,302.00	1987
Brighton	365.00	1986
Brigus	4,017.00	1987
Cartwright	158.00	1986
Catalina	936.00	1986
Change Islands	592.00	1986
Charleston	290.00	1986
Comfort Cove	320.00	1987
Conche	119.00	1986
Fermeuse	2,397.00	
Ferryland	4,330.00	1987
Flatrock	3,425.00	1987
Fogo	149.00	1986
Fox Harbour (St. Lewis)	532.00	1986
Foxtrap	1,328.00	1987
Georges Cove	125.00	1986
Goose Cove	149.00	1987
Gooseberry Cove	52.00	1986
Grand Bank	1,869.00	1987
Grates Cove	4,866.00	1985
Hants Harbour	90.00	1986
Happy Adventure	653.00	1987

APPENDIX 12

SMALL CRAFT HARBOURS BRANCH
PROPERTY ACQUISITIONS UNDERWAY

<u>LOCATION</u>	<u>TOTAL SPENT March 31, 1986</u>	<u>ESTIMATE COMPLETION DATE</u>
Harbour Breton	1,351.00	1987
Harbour Grace	3,670.00	1986
Hearts Content	1,177.00	1986
Hickmans Harbour	33.00	1987
Jamestown	723.00	1987
Joe Batts Arm	654.00	1985
Little Bay Islands	1,000.00	1987
Little St. Lawrence	304.00	1986
Long Cove	139.00	1986
Lumsden South	1,368.00	1987
Makkovik	364.00	1986
Marystown (Little Bay)	117.00	1987
Nippers Harbour	1,152.00	1987
Old Perlican	1,942.00	1987
Point au Gaul	816.00	1986
Port de Grave (Expropriation)	14,644.00	1988
Port de Grave (Shore Property)	4,009.00	
Portugal Cove	15,473.00	1988
Portugal Cove South	1,328.00	1987
Pound Cove	7,523.00	1987
Punch Bowl	173.00	1985
Ramea	11.00	
Red Harbour	634.00	1985
Shoe Cove Brook	210.00	1985
Smiths Harbour	4,152.00	1987
Smokey	724.00	1986
Southport	323.00	1986
Square Islands	399.00	1986
St. Anthony	2,839.00	1987
St. Bernards	2,707.00	1986
St. Brides	2,167.00	1985

APPENDIX 12

SMALL CRAFT HARBOURS BRANCH
PROPERTY ACQUISITIONS UNDERWAY

<u>LOCATION</u>	<u>TOTAL SPENT March 31, 1986</u>	<u>ESTIMATE COMPLETION DATE</u>
Sunnyside	356.00	1985
Tickle Cove	1,347.00	1987
Tilting	46.00	1985
Torbay	985.00	1985
Trepassey	2,181.00	1987
Triton West	500.00	1986
Twillingate	1,264.00	1987
Wild Cove	1,280.00	1987
Williams Harbour	18.00	1986