



Fisheries and Oceans
Canada

Pêches et Océans
Canada

Science

Sciences

C S A S

Canadian Science Advisory Secretariat

S C C S

Secrétariat canadien de consultation scientifique

Research Document 2002/023

Document de recherche 2002/023

Not to be cited without
permission of the authors *

Ne pas citer sans
autorisation des auteurs *

**Physical oceanographic conditions on
the Newfoundland and Labrador Shelves
during 2001**

**Conditions océanographiques
physiques sur les plates-formes de
Terre-Neuve et du Labrador en
2001**

By / Par

E. Colbourne

Department of Fisheries and Oceans
P. O. Box 5667
St. John's Newfoundland, Canada A1C 5X1

* This series documents the scientific basis for the evaluation of fisheries resources in Canada. As such, it addresses the issues of the day in the time frames required and the documents it contains are not intended as definitive statements on the subjects addressed but rather as progress reports on ongoing investigations.

* La présente série documente les bases scientifiques des évaluations des ressources halieutiques du Canada. Elle traite des problèmes courants selon les échéanciers dictés. Les documents qu'elle contient ne doivent pas être considérés comme des énoncés définitifs sur les sujets traités, mais plutôt comme des rapports d'étape sur les études en cours.

Research documents are produced in the official language in which they are provided to the Secretariat.

Les documents de recherche sont publiés dans la langue officielle utilisée dans le manuscrit envoyé au Secrétariat.

This document is available on the Internet at:

Ce document est disponible sur l'Internet à:

<http://www.dfo-mpo.gc.ca/csas/>

ISSN 1480-4883

© Her Majesty the Queen in Right of Canada, 2002

© Sa majesté la Reine, Chef du Canada, 2002

Canada

Table of Contents

	Page
Abstract/Résumé	3
Introduction	4
Data Sources and Analysis	4
Time Trends in Temperature and Salinity	5
<i>Station 27 (Division 3L)</i>	5
<i>Flemish Cap (Division 3M)</i>	7
<i>Hamilton Bank (Division 2J)</i>	8
Standard Monitoring Transects	8
<i>Southeast Grand Bank</i>	9
<i>Flemish Cap (47° N)</i>	9
<i>Bonavista</i>	10
<i>White Bay</i>	10
<i>Seal Island</i>	11
<i>Makkovik Bank and Beach Island (Nain Bank)</i>	11
<i>Cold Intermediate Layer (CIL) Time Series</i>	12
<i>Geostrophic Circulation and Transport</i>	13
Multi-Species Survey Results	14
<i>3LNO Spring</i>	15
<i>3LNO Fall</i>	15
<i>3K Fall</i>	16
<i>2J Fall</i>	17
Summary	17
Acknowledgements	19
References	19
Figures	21

Abstract

Oceanographic observations from Nain Bank on the central Labrador Shelf to the Southern Grand Bank on the Newfoundland Shelf during 2001 are presented referenced to their long-term (1971-2000) means. The annual water column averaged temperature at Station 27 during 2001 warmed slightly compared to 2000 remaining above the long-term mean. Surface temperatures were above normal for 9 out of 12 months with anomalies reaching a maximum of near 1.6°C in October. Bottom temperatures at Station 27 were above normal (by $\approx 0.5^{\circ}\text{C}$) during all 12 months of the year. Water column averaged summer salinities at Station 27 decreased to below normal values over the near-normal conditions of 2000. The cross-sectional area of sub-zero $^{\circ}\text{C}$ (CIL) water on the Newfoundland and Labrador Shelves during the summer of 2001 decreased over 2000 values, except on the Grand Bank where there was a slight increase. Off Bonavista the CIL area decreased to the lowest value observed since 1978. Bottom temperatures on the Grand Banks during the spring of 2001 were generally above normal (by up to 0.5°C) over most areas, except the southeast shoal of the Grand Bank where temperatures were slightly below normal. During the fall bottom, temperatures were above normal on the northern Grand Bank (Div. 3L) and in Divs. 2J and 3K. In general, over all areas of the Newfoundland Shelf the near-bottom thermal habitat continued to be warmer than that experienced from the mid-1980s to the mid-1990s. In summary, during 2000 and 2001 ocean temperatures were cooler than 1999 values, but remained above normal over most areas continuing the warm trend established in 1996. Salinities during 2001 were generally fresher-than-normal in the inshore regions continuing the trend observed during most of the 1990s.

Résumé

Des données océanographiques recueillies en 2001 dans le secteur qui s'étend du banc Nain (centre de la plate-forme du Labrador) au sud du Grand Banc (plate-forme de Terre-Neuve) sont présentées et comparées à leur moyenne à long terme (1971-1990). La moyenne annuelle de la température intégrée de la colonne d'eau à la station 27 en 2001 était légèrement plus haute qu'en 2000 et toujours au-dessus de la moyenne à long terme. La température en surface se situait au-dessus de la normale pendant 9 des 12 mois, les anomalies atteignant un maximum d'environ 1,6 °C en octobre. La température de fond à la station 27 dépassait la normale de 0.5 °C à tous les mois de l'année. La moyenne estivale de la salinité intégrée de la colonne d'eau à la station 27 a baissé en dessous des valeurs normales, alors qu'elle était presque normale en 2000. Au cours de l'été 2001, l'épaisseur de la couche d'eau inférieure à 0 °C (eaux intermédiaires froides) sur les plates-formes de Terre-Neuve et du Labrador a baissé par rapport aux données de 2000, sauf sur le Grand Banc où elle a augmenté légèrement. Au large de la baie de Bonavista, l'épaisseur de la couche intermédiaire froide a baissé pour atteindre le niveau le plus bas depuis 1978. La température de fond sur le Grand Banc au printemps 2001 était en général au-dessus de la normale (écart allant jusqu'à 0,5 °C) dans la plupart des régions, sauf au haut-fond sud-est du Grand Banc où la température était légèrement sous la normale. À l'automne, la température au fond était supérieure à la normale dans la partie nord du Grand Banc (division 3L) et dans les divisions 2J et 3K. En général, dans toutes les régions de la plate-forme de Terre-Neuve, la niche thermique près du fond était toujours plus chaude que les températures observées entre le milieu des années 1980 et le milieu des années 1990. En résumé, la température des eaux océaniques en 2000 et 2001 était plus basse qu'en 1999, mais elle est demeurée au-dessus de la normale dans la plupart des régions, la tendance vers un réchauffement établie en 1996 se poursuivant. La salinité en 2001 était en général plus basse que la normale dans les régions côtières, la tendance observée au cours de la plus grande partie des années 1990 se poursuivant.

Introduction

This report presents an overview of physical oceanographic conditions in the Newfoundland and Labrador Regions during 2001, with a comparison to long-term average conditions based on historical data. Where possible the long-term averages were standardised to a base period from 1971-2000 in accordance with the convention of the World Meteorological Organization. Most of the time series presented had good temporal coverage over the years 1971-2000. The information presented for 2001 is derived from the following sources; (1) observations made at Station 27 throughout the year from all research and assessment surveys, (2) measurements made along standard cross-shelf sections during annual spring, summer and fall oceanographic surveys under the Atlantic Zonal Monitoring Program (AZMP), and (3) oceanographic observations made during the spring and fall multi-species research vessel surveys (Fig. 1). Data from other sources are also used to help define the long-term means and conditions during 2001.

Data Sources and Analysis

Oceanographic data are available from archives at the Marine Environmental Data Service (MEDS) in Ottawa and maintained in databases at the Bedford Institute of Oceanography in Dartmouth, Nova Scotia and at the Northwest Atlantic Fisheries Center (NAFC) in St. John's Newfoundland. Since 1977 (in Division 2J), and from 1981 (in Divisions 3KL) to 1989 the bulk of the fall data were collected during random-stratified groundfish surveys. From 1971 to 1988 temperature data on these surveys were collected using bottles at standard depths and/or bathythermographs, mechanical or expendable (MBT/XBT), which were deployed usually at the end of each fishing set. Since 1989 net-mounted conductivity-temperature-depth (Seabird model SBE-19 CTD systems) recorders have replaced XBTs. This system records temperature and salinity data during trawl deployment and recovery and for the duration of the tow. Data from the net-mounted CTDs are not field calibrated, but are checked periodically and factory calibrated when necessary, maintaining an accuracy of 0.005°C in temperature and 0.005 in salinity. The XBT measurements are accurate to within 0.1°C .

Time series of temperature and salinity anomalies were constructed at standard depths from Hamilton Bank, Station 27 and the Flemish Cap. For Station 27 the 1971-2000 data set was sorted by day of the year to determine the annual cycle. Following the general methods of Petrie et al. (1992) and Myers et al. (1990), the seasonal cycle at the selected depth was determined by fitting a least squares regression of the form $\cos(\omega t - \phi)$ to the data. Where ω is the annual frequency, t is the time in days and ϕ is the phase. The fitted values were the mean, the annual frequency ω and two of its harmonics. The seasonal cycle was then removed to determine anomalies. For the other areas the 1971-2000 data sets were sorted by month to determine monthly means. The seasonal cycle was then removed from each observation by subtracting the monthly mean to determine anomalies. These anomalies are based on data collected over relatively large geographical areas and

therefore may exhibit variability due to spatial differences, in addition, the annual values may be based on only a few monthly estimates for the year. Therefore caution should be used when interpreting short time scale features of these series, however the long-term trends generally show real features.

Surface and bottom temperature grids for the Newfoundland Shelf were produced from all available data from 1971 to 2000 and for the spring and fall of 2001. All surface (5-m) bottom-of-the-cast temperature values for each time period (except those for which the cast depths were not within 10% of the total water depth) were interpolated onto a regular grid and contoured using a geostatistical (2-dimensional Kriging) procedure. Surface and bottom temperature anomaly maps were computed by subtracting the 2001 and the average temperature grids. Some temporal and spatial biasing may be present in the analysis given the large area and wide time interval over which the surveys were conducted. For example, the annual fall ground fish survey normally starts early to mid-October and finishes around mid-December, a time period when rapid cooling of the water column is taking place, particularly at the surface.

Near-bottom temperature data from the multi-species assessment surveys were used to compute time series of the area of the bottom covered by water in selected temperature ranges. The mean near-bottom temperature for each grid element was calculated as described above and its area integrated to produce a yearly estimate of the percentage of the total area within each temperature range. The mean near-bottom temperature time series was also constructed for each region. The selected temperature ranges were $\leq 0^{\circ}\text{C}$, $0-1^{\circ}\text{C}$, $1-2^{\circ}\text{C}$, $2-3^{\circ}\text{C}$ and $\geq 3^{\circ}\text{C}$. Potential sources of error in this analysis include temporal biasing, arising from the wide time interval during which a typical survey is conducted. This source of error is probably small, however, given the low magnitude of the annual cycle over most of the near-bottom depths encountered. An additional source of error that can potentially affect the results, particularly along the shelf edge, occurs when the spatial scales of temperature variations are shorter than the grid size. This effect however will probably be small, particularly over the Banks where the topography is relatively flat.

Time Trends in Temperature and Salinity

Station 27 (Division 3L)

A total of 57 temperature and salinity profiles were collected in the Avalon Channel at Station 27 off Cape Spear (Fig. 1a) during 2001. The data from this time series are presented in several ways to highlight seasonal and interannual variations over various parts of the water column. Depth versus time contour maps of the annual cycle in temperature and salinity and their associated anomalies for 2001 are displayed in Fig. 2. The monthly anomalies of temperature and salinity at selected standard depths are displayed in Figs. 3 and 4.

The cold near isothermal water column during the winter months has temperatures ranging from 0° to -1°C . These temperatures persisted throughout the year in the bottom layers. The surface layer temperatures ranged from about -1° to 0°C from January to late April, after which the surface warming commenced. By mid-May upper layer temperatures had warmed to 1°C and to over 13°C by August at the surface, after which the fall cooling commenced. Except for a near surface cold anomaly during the spring these values were about a 0.25° above normal for the winter months over most of the water column, but increased to 0.5° - 1.0°C above normal in the upper water column by late May and into July. This warm anomaly continued during late summer and fall months with values reaching 1.5°C above normal in October. Temperatures at mid-depths (centred at 75-100 m) were below normal from August to December with values reaching 0.5°C below normal in November. Bottom temperatures ranged from 0° to 0.25°C above normal from January to December (Fig. 2).

Surface salinities reached a maximum of >32.2 by mid-February and decreased to a minimum of <30.8 by September. These values were about normal during the winter months but decreased to slightly below normal during the spring to late fall in the upper water column. In the depth range from 50-100-m, salinities generally ranged from 32.2 to 32.7 and near bottom they varied throughout the year between 32.8 and 33.2. Except for the near-normal values during the winter these values were generally below normal (by >0.2) during most of 2001 (Fig. 2).

The annual time series of temperature and salinity anomalies generally show three significant colder and fresher-than-normal periods at near decadal time scales since the early 1970s (Figs. 3 and 4). At the surface and at the intermediate depths of 50 and 100-m, the negative temperature anomalies that reached a minimum in the early 1990s began to moderate to near-normal conditions by the summer of 1994 and have continued above normal up to 2001. Near bottom at 175-m, temperatures were generally below normal from 1983 to 1994, the longest continuous period on record. During 1994 and 1995 bottom temperatures started to warm and by 1996 were above the long-term average. Bottom temperatures from 1998 to 2001 have remained above the long-term average. Annually, surface temperatures were above normal in 9 months of 2001 and near-bottom they were above normal during all 12 months (Fig. 3 right panels).

Near-surface salinity anomalies (Fig. 4) show the large fresher-than-normal anomaly that began in early 1991 had moderated to near normal conditions by early 1993 but returned to fresher conditions by the summer of 1995. Salinities approached near normal values during 1996 but decreased to mostly below normal values from 1997 to 2001. In general, during the past several decades cold ocean temperatures and fresher-than-normal salinities, were associated with strong positive NAO index anomalies, colder-than-normal winter air temperatures, heavy ice conditions and larger than average summer cold-intermediate-layer (CIL) areas on the continental shelf (Drinkwater 1994, Colbourne et al. 1994, Drinkwater et al. 1996, Drinkwater et al. 1999). Annually, surface salinities were below normal for 10

out of 12 months of 2001 and near-bottom they were above normal during winter and fall but below normal from April to September (Fig 4, right panels).

Vertically averaged annual temperature and summer salinity anomaly time series for the depth ranges of 0-20, 0-50, 0-100 and 0-175 m are displayed in Fig 5. The temperature time series shows large amplitude fluctuations (exceeding 1°C at 50 and 100 m) at near decadal time scales, with cold periods during the early 1970s, mid-1980s and early 1990s. During the time period from 1950 to the late 1960s the heat content of the water column was generally above the long-term mean. It reached a record low during 1991, a near record high during 1996, near normal in 1997 and 1998 and above normal during 1999 to 2001. During 2001 vertically averaged temperatures over all depth ranges increased over 2000 values (Fig. 5 left panels).

The salinity time series (Fig. 5 right panels), which are averages of the July-September values show similar behavior as the heat content time series with fresher-than-normal periods generally corresponding to the colder-than-normal conditions up to at least the early 1990s. The predominance of fresher-than-normal salinities during the latter half of the 1990s corresponds to a warming trend, unlike previous time periods. The magnitude of negative salinity anomaly on the inner Newfoundland Shelf during the early 1990s is comparable to that experienced during the 'Great Salinity Anomaly' of the early 1970s (Dickson et al. 1988). During 1993 summer salinities started returning to more normal values but decreased again by the summer of 1995 to near record lows, these increased to near normal values in 1997 and 1998 but fell again to below normal values in 1999 and returned to normal conditions during 2000. During 2001 salinity averages decreased over 2000 values over all depth ranges to below normal conditions.

Flemish Cap (Division 3M)

Temperature anomalies on the Flemish Cap (Fig. 6) are also characterised by cold periods during the 1970s, mid-1980s and the late 1980s to the mid-1990s. The cold period, beginning around 1971, continued until 1977 in the upper layers, while temperature anomalies at 150-m depth were of a much lower magnitude. From 1978 to 1984 the temperature anomalies showed a high degree of variability in the upper water column with a tendency towards positive anomalies. By 1985 in the top 100-m of the water column, negative temperature anomalies had returned. This cold period moderated briefly in 1987 but returned again by 1988 and continued into the early 1990s. By 1995 temperatures moderated and were above normal at most depths from 1997 to 2001. In general, annual temperatures in 2001 decreased over 2000 values at most depths.

The time series of salinity anomalies (Fig. 6) show large fresher-than-normal conditions from 1970 to 1975 with peak amplitudes reaching near 1-salinity unit below normal at the surface. Negative salinity anomalies also occurred during the mid-1980s and mid-1990s, however the amplitude was much smaller than the great

salinity anomaly of the early 1970s. The trend in salinity values during the latter half of the 1990s ranged from slightly above normal at the surface to near normal at deeper depths. In general, the long-term trends in temperature and salinity anomalies on the Flemish Cap are very similar to those at Station 27 and elsewhere on the continental shelf over similar depth ranges (Colbourne and Foote 2000). Annual salinity anomalies in 2001 decreased over 2000 values over all depths.

Hamilton Bank (Division 2J)

Time series of temperature and salinity anomalies from 1951 to 2001 on Hamilton Bank are shown in Fig. 7 at selected depths. The annual values show a high degree of variability that may in part be due to the different station locations between years coupled with the spatial variability of the hydrographic properties over the bank at the same depth level. It should also be noted that these annual estimates are calculated from a variable number of observations. A low frequency trend was calculated by a 5-year running mean that suppresses the high frequency variations and gives a general indication of long-term trends.

The temperature anomaly time series is characterised by amplitudes ranging from near $\pm 2^{\circ}\text{C}$ and with periods ranging from 2 to 10 years. The cold periods of the early 1970s, the mid-1980s and the early 1990s are apparent, but the amplitude of the anomalies varied considerably with depth. The long-term trend indicates that temperatures on Hamilton Bank have moderated, particularly in the deeper layers, being above normal since the mid-1990s, similar to conditions further south at Station 27. During 2001 temperatures were about normal at the surface and at 75-m depth, but remained above normal below 100-m depth. The salinity time series show similar trends as elsewhere on the shelf with fresher-than-normal conditions in the early 1970s, mid-1980s and early 1990s. Salinities from 1995-2001 varied about the long-term mean with near-normal values during 2001.

Standard Monitoring Sections

In 1976 the International Commission for the Northwest Atlantic Fisheries (ICNAF) adopted a suite of standard oceanographic monitoring stations along sections in the Northwest Atlantic Ocean from Cape Cod (USA) to Egedesminde (West Greenland) (Anon. 1978). Four of these sections are occupied during mid-summer on an annual oceanographic survey conducted by DFO's Newfoundland Region. They are (1) the Seal Island section on the southern Labrador coast and Hamilton Bank, (2) the White Bay section which crosses the relatively deeper portions of the northeast Newfoundland Shelf, (3) the Bonavista section off the east coast of Newfoundland and (4) the Flemish Cap section which crosses the Grand Bank at 47°N and continues eastward across the Flemish Cap. As part of an expanded Atlantic zonal monitoring program (AZMP) the Bonavista and Flemish Cap sections are now occupied during the spring and fall with the addition of the Southeast Grand Bank section. Also, when time permits sections on Makkovik Bank and Nain Bank (Beachy Island) on the mid-Labrador Shelf are

occupied during the summer (Fig. 1a). In this section the physical oceanographic results from these sections for the spring, summer and fall of 2001 are presented. The temperature and salinity anomalies referenced to the 1971-2000 data sets are also presented. The levels of confidence in these estimates are not yet assessed, but are the highest for the summer sections.

Southeast Grand Bank

The Southeast Grand Bank section was sampled twice during 2001 (April and November). Contours of temperature, salinity, sigma-t and dissolved oxygen saturation along this section are shown in Figs. 8 and 9. During 2001 temperatures were generally above 0°C along this section except in the relatively deep Avalon Channel where values dipped below -0.5°C. Temperatures on the shallower portions of the Grand Bank ranged from 1-2°C during spring and over 10°C during the fall near the surface. Except for the near bottom areas these values were below normal by up to 2°C in some areas during the spring, much colder than that observed in 2000 during the same time period. To the southeast of the Labrador Current spring temperatures decreased from over 14°C during 2000 to 3°C in 2001. By the fall upper layer temperatures had warmed and were predominantly above normal (up to 1°C) in most areas.

Upper layer salinities along the section during the spring ranged from <32.5 near shore to >33 in the offshore region. Bottom salinities on the Grand Bank ranged from 32.75 - 33.0 and from 33 - 34 over the southeast slope of the Grand Bank. These values were predominately saltier-than-normal over most of the southeast Grand Bank during the spring. During the fall salinities decreased over spring values, particularly in the inshore Labrador Current with values reaching below 31.5. These however were still slightly above the long-term average.

Flemish Cap

The Flemish Cap section was sampled 3 times during 2001 (April, July and November), however summer measurements were restricted to areas west of the Flemish Pass (Figs 10, 11 and 12). Near surface temperatures along this section ranged from 0 - >4°C during the spring to 8-9°C during the summer, and 6-9°C during the fall. Sub-zero (°C) temperatures generally persisted throughout the year from below 60-m depth to the bottom over most of the Grand Bank. The coldest water is normally found in the Avalon Channel and at the edge of the Grand Bank corresponding to the inshore and offshore branches of the Labrador Current. Except for the colder-than-normal values over the inner Grand Bank during the spring, temperatures were generally above normal over most areas along this section and except for isolated areas this trend continued in to the summer and fall months. Bottom temperatures over most of the Grand Bank were also above normal during the spring through to the fall.

Salinities along the section on the Grand Bank were very similar to that observed further south along the southeast Grand Bank section. They are characterized by generally fresher conditions on the Grand Bank (<33), a strong horizontal gradient at the shelf break and generally salty (>35.25) water offshore of the Flemish Pass. Salinity anomalies during 2001 were quite variable along this section, but overall were slightly higher than average on the Grand Banks.

Bonavista

The Bonavista section was sampled 3 times during 2001, May, July and November (Figs. 13, 14 and 15). The dominant feature along this section is the cold intermediate layer of $<0^{\circ}\text{C}$ water (CIL) which develops during early spring after intense winter cooling. Temperatures along the Bonavista section shoreward of the shelf break in the upper water column ranged from $<0^{\circ}\text{C}$ during spring, reached a maximum of $7\text{--}8^{\circ}\text{C}$ during the summer and decreased to $2\text{--}3^{\circ}\text{C}$ by late fall. These values were generally above normal (up to 2°C) except for a colder-than-normal anomaly in the near-surface water during both spring and summer. The offshore area of the Labrador Current also appeared colder-than-normal during the summer survey. In general, however, temperatures on the eastern Newfoundland Shelf were above normal at intermediate depths and near bottom from spring to fall.

Bonavista section salinities near the surface generally range from <32 in the inshore region to >34 in the offshore region. Bottom salinities ranged from 32.5 in the inshore regions, to 34.75 at about 325-m depth near the shelf edge. In areas generally associated with the inshore and offshore Labrador Current salinities were fresher-than-normal (up to 0.5) at intermediate depths during the spring and summer but appeared saltier-than-normal during the fall. In the surface waters and at all depths over the central shelf salinities were predominantly saltier-than-normal during spring through to late fall.

White Bay

The White Bay section, which crosses the deeper portions of the northeast Newfoundland Shelf, was sampled in July of 2001 (Fig. 16). The CIL water during the summer is usually quite extensive along this section, with a large area of water with $<0^{\circ}\text{C}$ temperatures extending from the coast and offshore to over 400 km. At about mid-shelf temperatures below 200 m increase from 0°C to $>3^{\circ}\text{C}$ at the outer edge of the shelf. Except at mid-shelf and near the surface, temperatures along this transect were generally below average during 2001. Surface salinities generally ranged from <31 in White Bay to near 34 in the offshore region. Bottom salinities ranged from 33 near shore to 34.75 at the edge of the shelf. Similar to conditions along the Bonavista section these values were fresher-than-normal in areas corresponding to the locations of the inshore and offshore Labrador Current at intermediate depths and generally above normal elsewhere.

Seal Island

The Seal Island section, which crosses Hamilton Bank on the southern Labrador Shelf, was also sampled in July of 2001 (Fig. 17). Upper layer temperatures across the shelf region ranged from 0°C at approximately 50-m depth to between 3-4°C at the surface. Temperatures below 50-m depth were generally <0°C over most of the shelf, corresponding to the CIL, except near bottom where they range from 0.5°-1°C. Near the shelf break bottom temperatures increase to 2° to 3°C. Temperature anomalies in the surface layer were up to 1°C below normal over most of the shelf, but were up to 2°C above normal offshore of the shelf break. In water generally associated with the CIL, temperatures were above normal by up to 1°C in the inshore regions. Surface salinities along this section ranged from <31 inshore of Hamilton Bank to >34 in the offshore region. Bottom salinities ranged from 32.5 near shore to 34.75 at the edge of the shelf in water depths >400-m. Again similar to conditions along sections further south, intermediate water salinities were fresher-than-normal in areas corresponding to the locations of the inshore and offshore Labrador Current and generally above normal elsewhere, particularly at the surface. Offshore of the shelf break salinities were near normal at depth and above normal in the upper water column.

Makkovik Bank and Beachy Island (Nain Bank)

The Makkovik Bank and Beachy Island sections on the mid-Labrador Shelf were occupied in July of 2001 for the third consecutive year (Fig. 18 and 19). Along the Makkovik Bank section upper layer temperatures over the shelf ranged from 0°C at 30-m depth to between 2-3°C at the surface. Temperatures below 30-m depth were generally <0°C over the shelf but increased to above 0°C on the outer edge of the Bank and to >3°C on the shelf slope below approximately 200-m depth. Temperature anomalies in the upper layer over the shelf were up to 1°C above average but near normal over the rest of the water column. Surface salinities along this section ranged from <30.75 inshore of Makkovik Bank, <32 on the bank and >34 in the offshore region. Bottom salinities ranged from 32.5 near shore to 34.75 at the edge of the Labrador Shelf in water depths >450-m. In general conditions along section were fresher-than-normal over most of the water column, particularly near the surface. Offshore of the shelf break salinities were near normal at depths >150-m to above normal in the upper water column.

Along the Beachy Island section, which crosses Nain Bank, temperatures were slightly warmer than those observed along the Makkovik Bank section with surface values over 4°C and the area of water with temperatures below -1°C was much less than that on Makkovik Bank. Offshore temperatures were very similar along both sections. Similar to the Makkovik Bank section temperature anomalies in the upper layer were above average but below average at the edge of the shelf. Surface salinities along this section ranged from <31 inshore of Nain Bank, <32 on Nain bank and >34 in the offshore region. Bottom salinities ranged from 32.5 near

shore to 34.75 at the edge of the Labrador Shelf. These values were generally fresher than the average of the available data for this time period.

Cold Intermediate Layer (CIL) Time Series

As shown above in the cross-shelf contour plots, the vertical temperature structure on the Newfoundland Continental Shelf during late spring through to the fall is dominated by a layer of cold $<0^{\circ}\text{C}$ water trapped between the seasonally-heated upper layer and warmer slope water near the bottom. This water mass is commonly referred to as the cold intermediate layer or CIL (Petrie et al. 1988). The cold, relatively fresh, shelf water is separated from the warmer saltier water of the continental slope by a frontal region denoted by a strong horizontal temperature and salinity gradient near the edge of the continental shelf. The spatial extent of this winter-chilled water mass is evident in the section plots of the temperature contours, for example along the White Bay transect (Fig. 16) the CIL extends offshore to over 400 km, with a maximum thickness of approximately 215 m in the White Bay area. This corresponds to a cross-sectional area of around 50 km^2 . Figure 20 shows time series of the CIL cross-sectional area anomalies defined by the 0°C contour for the Flemish Cap, Bonavista, White Bay and Seal Island sections.

Along the Flemish Cap section the CIL area was below the 1971-2000 normal, similar to conditions observed during the past 3-years but a slight increase over 2000. Off Bonavista the CIL area decreased to the lowest value observed since 1978 continuing the trend of below normal values observed since 1994. Similarly along the White Bay and Seal Island sections the area of $<0^{\circ}\text{C}$ water decreased over 2000 values continuing the recent below normal trend. This is in contrast to the near record high values measured during the early 1990s, which was a very cold period on the Newfoundland Shelf. Minimum temperatures (expressed as anomalies) measured in the core of the CIL for all four sections during the summer from 1951 to 2001 are also shown in Fig. 20. The minimum temperature observed along the Flemish Cap, Bonavista, White Bay and Seal Island sections during 2001 were -1.26° , -1.51° , -1.61° , and -1.34°C , respectively. These were all above normal and represent an increase over the 2000 values except on the White Bay section.

The total volume of $<0^{\circ}\text{C}$ water on the Newfoundland and southern Labrador Shelves shoreward of the 1000-m isobath and within NAFO divisions 2J3KL is shown in Fig 21. The calculation of the volume of CIL water overlying the continental shelf has been described by Colbourne and Mertz (1995). The CIL volume is principally determined by the thickness of the layer of water $<0^{\circ}\text{C}$ on the shelf. The isolines of CIL thickness show large variations from summer to fall of the same year and from cold years to warm years (Colbourne, 1995). The average thickness of the CIL is maximum ($>150\text{ m}$) along the east coast of Newfoundland within 100 km of the shore and decreases to zero near the edge of the shelf, on the southern Grand Bank and on Hamilton Bank during warm years in the fall. The time series of total volume of $<0^{\circ}\text{C}$ water over the 2J 3KL area shows maximum values

during the cold periods of the mid-1980s and early 1990s. The total volume of $<0^{\circ}\text{C}$ water on the shelf increased from approximately $3.3 \times 10^4 \text{ km}^3$ during the summer of 1989 to $5.6 \times 10^4 \text{ km}^3$ in 1990, a 70% increase. Since 1993 the volume of $<0^{\circ}\text{C}$ water on the Newfoundland Shelf during the fall has been slowly decreasing reaching a minimum during 1999. The fall of 2001 volume decreased relative to the 2000 continuing the trend of below average values experienced since the mid-1990s. The time series during the fall shows similar trends as in the summer, however the total volume is only about 60% of the summer values. Due to data limitations, the volume estimates were not calculated prior to 1980 and during the summer of 2000 and 2001.

Geostrophic Circulation and Transport

The temperature and salinity data from the summer 2001 survey were used to calculate geostrophic currents relative to 300 m along the Flemish Cap, Bonavista, White Bay, Seal Island, Makkovik Bank and the Beachy Island (Nain Bank) sections (Fig. 22). The geostrophic component of the speed of the southward flowing Labrador Current along these sections generally show distinct inshore and offshore branches. The inshore branch is generally much weaker than the shelf-slope offshore branch and is usually restricted to the inshore troughs within approximately 50-100 km of the coast. Typical geostrophic current speeds in these regions range from $0.05\text{--}0.10 \text{ ms}^{-1}$, although some estimates were up to 0.2 ms^{-1} along the Bonavista and Seal Island sections during 2001. The much stronger offshore branch is normally located at the shelf break in water depths generally greater than 400 m. The offshore distance and the width of the current vary according to the underlying topography. Along the Seal Island section, for example, the core of the offshore branch is about 100 km wide, centred at about 200 km offshore over the 400-m isobath, while off Makkovik and Nain Banks the width of the current is approximately 50 km centred at about 125 km offshore. In the offshore branch, typical speeds range from 0.05 ms^{-1} at 175-m depth to $>0.2 \text{ ms}^{-1}$ in the upper water column. At mid-shelf the currents sometimes reverse direction, with clockwise circulation on Hamilton Bank, for example. These currents are generally weak however with speeds generally less than 0.05 ms^{-1} . In general, geostrophic currents along the Labrador Shelf (Seal Island, Makkovik Bank and Nain Bank) appear stronger than those on the eastern Newfoundland Shelf with speeds over 0.40 ms^{-1} offshore from Nain Bank for example (Fig. 22).

The historical (1951-2001) summer (July-August) temperature and salinity data along the Seal Island, Bonavista and Flemish Cap transects were used to compute a time series of geostrophic transports. The volume transport was calculated by integrating the speed both vertically through the water column and horizontally through the offshore branch of the current. A common reference level of 135-m was chosen for these calculations since this was the deepest level common to all three transects that did not intersect the bottom, thus eliminating potential problems associated with a bottom reference level. Also, the main interest was to

examine variations in volume transport during recent ocean climate changes on the continental shelf. Short-term climate changes generally result in variations in upper layer shelf stratification due mainly to salinity changes resulting from increased ice formation and melt. This determines in part, the magnitude of the shelf-slope density front and hence the strength of the geostrophic component of the Labrador Current. The time series of volume transport of the offshore branch of the Labrador Current for the three sections (Fig. 23) show large interannual variations with an average transport of between 0.4-0.5 Sv ($1 \text{ Sv} = 10^6 \text{ m}^3/\text{s}$) to the south, relative to 135 m. In general, the time series indicate higher than average transport during the late 1950s and into the 1960s, lower than average values during the cold period of the early 1970s and to a lesser extent during the cold period of the mid-1980s. During the late 1980s the transport increased to above average values, which for the most part continued into the mid-to-late 1990s. Except for the Bonavista transect, the transport in the offshore branch of the Labrador Current during 2001 increased slightly over the 2000 values.

Multi-Species Survey Results

Canada has been conducting stratified random bottom trawl surveys in NAFO Sub-areas 2 and 3 since 1971. Each NAFO Div. has been stratified based on the depth contours of available standard navigation charts. Areas within each division with a selected depth range were divided into strata and the number of fishing stations in an individual stratum are based on an area-weighted proportional allocation (Doubleday 1981). Temperature profiles of the water column are available for each fishing set in each stratum. Surveys have been conducted for the following NAFO Divisions, time periods and depth ranges: 3P in winter and/or spring from 1972 to 2001, in water depths down to 366 m until 1979 and to 548 m since then; 3L in spring from 1971-2001, except 1983 and 1984; 3NO in spring from 1971-2001, except 1983 in 3N and 1972, 1974 and 1983 in 3O, in water depths down to 366 m in most years and more recently to 548 m; 2J fall from 1977-2001; 3K in fall from 1978-2001; 3L in fall from 1981-2001, 3NO in fall from 1990-2001. These surveys provide 2 spatially comprehensive oceanographic data sets on an annual basis for the Newfoundland Shelf, one during the spring from 3Pn in the west to 3LNO on the Grand Banks and one during the fall time period from 2J in the north to 3NO in the south. In this section an analysis of the near-surface and near-bottom temperature fields and their anomalies based on these data sets are presented for the spring and fall periods. Interannual variations are then examined by computing the areal extent of the bottom covered with water in various temperature ranges as described earlier. The objective of this analysis is to provide some indication of potential changes in any temperature dependent near-bottom habitat for various fish species. An analysis of the 3P data set is presented in a separate document to meet the mid-fall regional stock assessment (RAP) requirements.

3LNO Spring

Surface and bottom temperatures and their anomalies for NAFO Divs. 3LNO during the spring are shown in Fig. 24. Surface temperatures ranged from 2°-3°C in 3L to 3°-5°C on the southern Grand Bank. Except for areas of above normal values in the offshore regions of 3L where surface temperatures were up to 1°-2°C above normal, most of the surveyed area showed below-normal surface temperatures. Surface observations at Station 27 (Fig. 3) and along the Southeast Grand Bank (Fig. 8) and Flemish Cap (Fig. 10) sections also indicate below-normal surface temperatures during the April-May period. In the northern areas, spring bottom temperatures ranged from <0°C in the inshore regions of the Avalon Channel to over 3°C at the shelf edge. Over the central and southern areas bottom temperatures ranged from 1°C to 2°C on the Southeast Shoal and above 5°C along the slopes of the Grand Bank in Div. 3O. During the spring of 2001, <0°C water was mostly restricted to Div. 3L, with above-normal temperatures over most areas except the southeast shoal of the Grand Bank where temperatures were slightly below normal.

Time series of the areal extent of the bottom covered by water in various temperature ranges during spring for the 3LNO region are displayed in Fig. 25. In this region from 1975 to 1983 most of the bottom area was covered by water above 0°C with only approximately 20% covered by <0°C water. From 1984 to 1997 there was a large increase in the area of <0°C water with percentages reaching near 60% in some years. Since 1997 there was a significant decrease in the percentage area of the bottom covered by <0°C water and a corresponding increase in the area covered by water $\geq 1^\circ\text{C}$. During the spring of 1998 and 1999 water with temperatures above 1°C covered 50-60% of the bottom area on the Grand Bank. The 1998 and 1999 values represents the largest area of relatively warm water on the Grand Bank since the late 1970s. During 1999 the area of <0°C water on the Grand Bank decreased to about 10%, the lowest since 1978. During 2000 and 2001 this area has increased to about 25%.

The time series of average bottom temperature for the 3LNO region (Fig. 25, bottom panel) shows large interannual variations of about 1°C amplitude and a downward trend that started in 1984. This trend continued until the early 1990s. The highest temperature in the 25-year record occurred in 1983 when the average temperature was 3.2°C and the lowest temperature of 0.25°C occurred in 1990. Recently, temperatures have increased over the lows of the early 1990s with the average bottom temperature during the spring of 1999 and 2000 reaching 2°C. During the spring of 2001 the average bottom temperature decreased over the 2000 value to about 1.5°C.

3LNO Fall

Surface and bottom temperatures and their anomalies for NAFO Divs. 3LNO during the fall are shown in Fig. 26. Fall surface temperatures generally ranged from <3°C in northern 3L to over 13°C in southern 3O. These values were generally

below normal in northern 3L and above normal elsewhere. Fall bottom temperatures generally ranged from $<0^{\circ}\text{C}$ on the northern Grand Bank and in the Avalon Channel to 3°C at the shelf edge. Over the central and southern areas bottom temperatures ranged from 1°C to $>4^{\circ}\text{C}$ on the Southeast Shoal and to $>3^{\circ}\text{C}$ along the edge of the Grand Bank. During the fall of 2001 bottom temperatures over the surveyed area were above normal on the northern Grand Bank and along the edge of the Grand Bank by up to 0.5°C . Bottom temperatures in 3NO were quite variable fluctuating $\pm 1^{\circ}\text{C}$ about normal in most regions.

Time series of the areal extent of the bottom covered by water in various temperature ranges during fall for the 3LNO region are displayed in Fig. 27. In general, the percentage area of the bottom covered by $<0^{\circ}\text{C}$ water decreased significantly during 1995 to roughly one-half the value during the first half of the 1990s. A corresponding increase in the areal extent of water $\geq 1^{\circ}\text{C}$ occurred during 1995. From 1995 to 1998 this remained relatively constant at about 50%, but increased to over 70% during 1999. During the fall of 2000 the area of $<0^{\circ}\text{C}$ water remained below the values of the early 1990s but increased over 1999 values to near 40%. During 2001 the area of $<0^{\circ}\text{C}$ water decreased slightly over 2000. The average bottom temperature for all strata in Divs. 3LNO during the fall decreased from approximately 1.5°C during 1990 to 1°C during 1993 and 1994, then increased to approximately 1.8°C during 1995. These remained relatively constant up to 1998 but then increased to over 2.5°C during 1999, the highest in the 10 year record (Fig. 27 bottom panel). During the fall of 2000 and 2001 the mean bottom temperature remained constant, a significantly decrease over 1999 values, but was still above the cold condition of the early 1990s.

3K Fall

Surface and bottom temperatures and their anomalies for NAFO Div. 3K during the fall are shown in Figs. 28 and 29. Surface temperatures ranged between 1°C - 3°C in most areas of 3K during the survey. Except for the mid-shelf area of Funk Island Bank these values generally ranged from near normal to above normal in the offshore regions. Most of 3K has water depths $>200\text{-m}$, as a result relatively warm slope water floods through the deep troughs between the northern Grand Bank and southern Funk Island Bank and between northern Funk Island Bank and southern Belle Isle Bank. Bottom temperatures on these banks during the fall of 2001 ranged between 2°C - 3°C , which were about 0.5°C - 1°C above their long-term means. Near the edge of the continental shelf in water depths below 500-m temperatures are generally around 3.5°C , which was about normal.

Time series of the areal extent of the bottom covered by water in various temperature ranges and the mean bottom temperature during the fall for Div. 3K are displayed in Fig. 30. The percent area of the bottom covered by $<0^{\circ}\text{C}$ water in this region is generally $<30\%$ and in many years $<10\%$, with significant amounts appearing only during the cold periods of the early to mid-1980s and 1990s. For temperature $>3^{\circ}\text{C}$, the bottom area in 3K covered has been relatively constant

ranging from 20-35% from 1979 to 1995 after which it increased to near 50% from 1997 to 2001. The time series of the average bottom temperature in Div. 3K (Fig. 30, bottom panel) during the fall ranged from 1°C in 1982 to 2.3°C in 1986 with an overall average of about 2°C. From 1995 to 1999 they increased to above-average values reaching about 2.7°C during 1999. During the fall of 2000 and 2001 bottom temperatures remained relatively warm but decreased over 1999 values to about 2.2°C.

2J Fall

Surface and bottom temperatures and their anomalies for NAFO Div. 2J during the fall are shown in Figs. 31 and 32. Surface temperatures ranged between 1°-2°C in most areas of 2J during the fall survey. These values appeared below average over the inshore regions and about normal elsewhere. Bottom temperatures during the fall of 2000 ranged from <1°C inshore, to >3.5°C offshore at the shelf break. Bottom temperatures over Hamilton Bank ranged from <2°C on the inshore portion of the bank, to near 3°C on the southern portion. Bottom temperature anomalies were about 1°-2°C above normal of Hamilton Bank and about normal along the edge of the shelf.

Time series of the areal extent of the bottom covered by water in various temperature ranges and the mean bottom temperature during the fall for Div. 2J are displayed in Fig. 33. The percent area of the bottom covered by <0°C water in Div. 2J is normally very low during the fall with significant amounts appearing only during the cold periods of the early to mid-1980s and early 1990s, when it ranged between 20% to 30%. For temperatures >3°C in 2J the bottom area covered ranged from a low of 15% in 1992 to a maximum of near 50% during 1999 and 2001. Since 1996 the area of the bottom covered with <0°C water decreased to <10%. Bottom temperatures during the fall in Div. 2J generally average about 2°C but during the latter half of the 1990s they increased to about 2.5°C. During 2001 mean bottom temperatures continued above 2.5°C.

Summary

The annual water-column averaged temperature at Station 27 for 2001 warmed slightly compared to 2000 remaining above the long-term mean. Surface temperatures were above normal for 9 out of 12 months with anomalies reaching a maximum of near 1.6°C in October. Spring (April to May) values were below normal. Bottom temperatures at Station 27 were above normal (by $\approx 0.5^\circ\text{C}$) during all 12 months of the year. Water-column averaged summer salinities at Station 27 decreased to below normal values over the near-normal conditions of 2000. Annually salinities at Station 27 were above normal during the winter months, below normal from spring to early fall, and slightly above normal during late fall below the surface layer.

The cross-sectional area of $<0^{\circ}\text{C}$ (CIL) water on the Newfoundland and Labrador Shelves during the summer of 2001 decreased over 2000 values except on the Grand Bank where there was a slight increase. The CIL areas were below normal along all sections from the Grand Bank (Flemish Cap section), to the Seal Island section off southern Labrador. Off Bonavista the CIL area decreased to the lowest value observed since 1978. The total volume of $<0^{\circ}\text{C}$ water on the shelf during the fall decreased compared to 2000, continuing the trend of below normal values observed since the mid-1990s. Minimum CIL core temperatures along the standard sections during the summer of 2001 increased over 2000 values except off White Bay, and were all above normal.

Bottom temperatures on the Grand Banks during the spring of 2001 were generally above normal (by up to 0.5°C) over most areas except the southeast shoal of the Grand Bank where temperatures were slightly below normal. During the fall bottom temperatures were above normal on the northern Grand Bank (3L) but in 3NO they were quite variable fluctuating $\pm 1^{\circ}\text{C}$ about normal in most regions. Fall bottom temperatures in Divs. 2J and 3K were above normal in most areas, up to 2°C on Hamilton Bank. Except during the spring on the Grand Bank mean bottom temperature in all regions increased slightly over 2000 values. Correspondingly, the area of the bottom covered by warmer water increased slightly over 2000 except on the Grand Bank during the spring. In general, over all areas of the Newfoundland Shelf the near-bottom thermal habitat continued to be warmer than that experienced from the mid-1980s to the mid-1990s.

In summary, the below-normal trends in temperature and salinity, established in the late 1980s reached a minimum in 1991. This cold trend continued into 1993 but started to moderate during 1994 and 1995. During 1996 temperature conditions were above normal over most regions, however, summer salinity values continue to be slightly below the long-term normal. During 1997 to 1999 ocean temperatures continued to warm over most areas, with 1999 one of the warmest years in the past couple of decades. During 2000 and 2001 ocean temperatures were cooler than 1999 values, but remained above normal over most areas continuing the trend established in 1996. Salinities during 2001 were generally fresher than normal in the inshore regions, which is a continuation of the trend observed during most of the 1990s.

Acknowledgements

I thank C. Fitzpatrick, D. Senciall, P. Stead, J. Craig and S. Kennedy of the oceanography section at NAFC for data collection and processing. I also thank the many scientists and technicians at the Northwest Atlantic Centre (NAFC) for collecting and providing much of the data contained in this analysis and to the Marine Environmental Data Service in Ottawa for providing most of the historical data. I also thank the captain and crew of the CCGS Teleost and Hudson for three successful oceanographic surveys during 2001.

References

- Anon. 1978. List of ICNAF standard oceanographic sections and stations. ICNAF selected papers #3.
- Colbourne, E. 1995. Oceanographic conditions and climate change in the Newfoundland Region during 1994. DFO Atlantic Fisheries Research Doc. 95/3.
- Colbourne, E. and G. Mertz. 1995. Spatial and temporal variability in the CIL on the Newfoundland Shelves. NAFO SCR Doc. 95/33, Ser. No. N2542. 14p.
- Colbourne, E. B., S. Narayanan, and S. Prinsenberg. 1994. Climatic change and environmental conditions in the Northwest Atlantic during the period 1970-1993. ICES mar. Sci. Symp., 198:311-322.
- Colbourne, E. B., and K. D. Foote. 2000. Variability of the stratification and circulation on the Flemish Cap during the decades of the 1950s-1990s J. Northw. Atl. Fish Sci. 26: 103-122.
- Dickson, R.R., Meincke, J., Malmberg, S. A., and Lee, A. J. 1988. The "Great Salinity Anomaly" in the northern North Atlantic 1968-82. Progr. Oceanogr. 20: 103-151.
- Doubleday, W. G., Editor. 1981. Manual on groundfish surveys in the Northwest Atlantic. NAFC. Sco. Coun. Studies, 2: 56p.
- Drinkwater, K. F. 1994. Overview of environmental conditions in the Northwest Atlantic in 1993. NAFO SCR Doc. 94/20, Ser. No. N2385. 61p.
- Drinkwater, K. F., E. Colbourne and D. Gilbert. 1996. Overview of environmental conditions in the Northwest Atlantic in 1995. NAFO SCR Doc. 96/41, Ser. No. N2716. 65p.

- Drinkwater, K. F., E. Colbourne and D. Gilbert. 1999. Overview of environmental conditions in the Northwest Atlantic in 1998. NAFO SCR Doc. 99/36, Ser. No. N4094. 72p.
- Myers, R. A., S. A. Akenhead, and K. Drinkwater. 1990. The influence of Hudson Bay runoff and ice-melt on the salinity of the inner Newfoundland Shelf. *Atmos.- Ocean* 28, No 2: pp. 120-157.
- Petrie, B., S. Akenhead, J. Lazier and J. Loder. 1988. The cold intermediate layer on the Labrador and Northeast Newfoundland Shelves, 1978-1986. *NAFO Sci. Coun. Stu.* 12: 57-69.
- Petrie, B., Loder, J., Lazier, J., and Akenhead, S. 1992. Temperature and salinity variability on the eastern Newfoundland Shelf: the residual field. *Atmosphere-Ocean* 30:120-157.

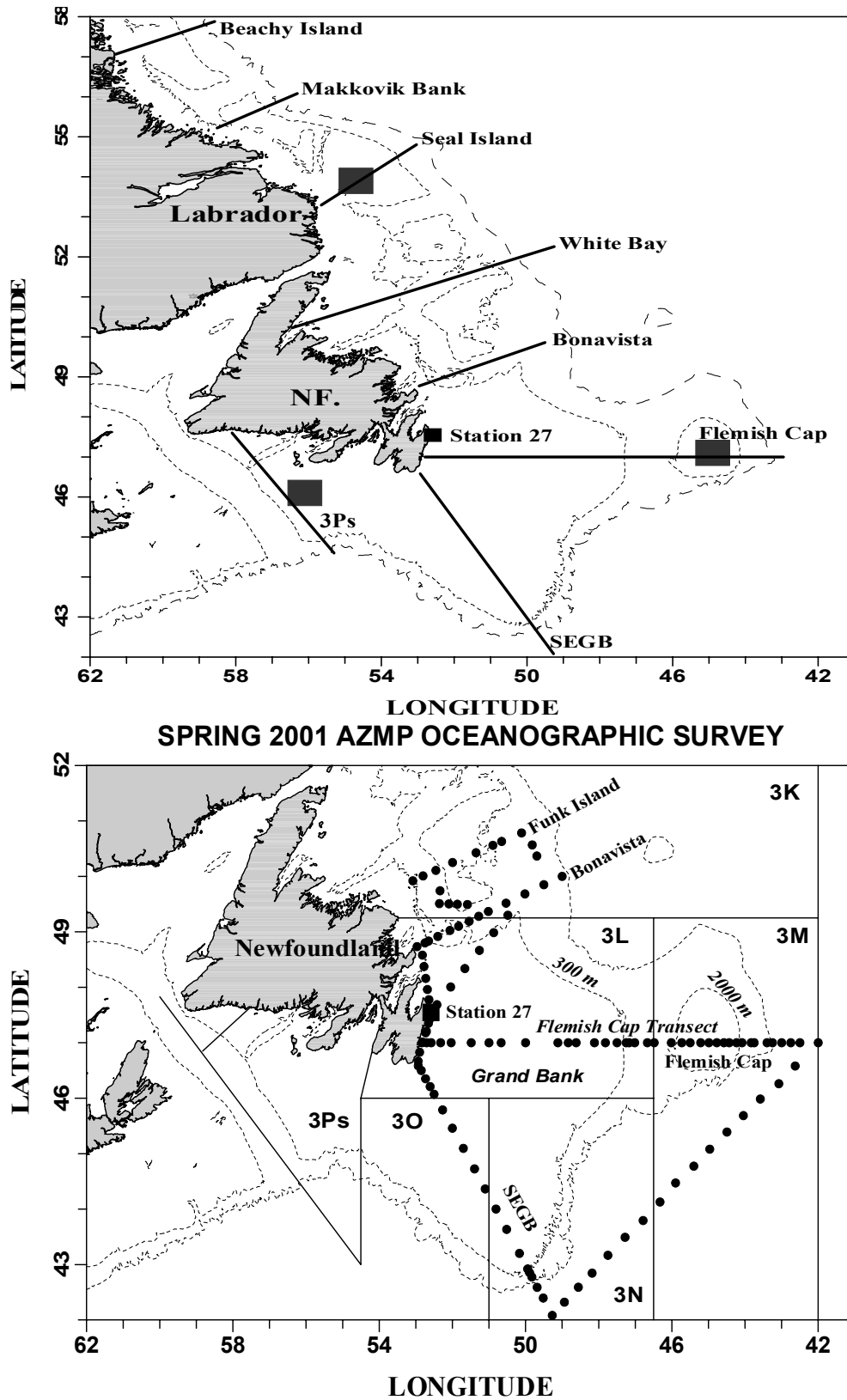


Fig. 1a. Location maps showing the position of standard transects, time series boxes, Station 27 and the position of all stations occupied during the spring 2001 survey. Bathymetry contours are 300 and 1000 m.

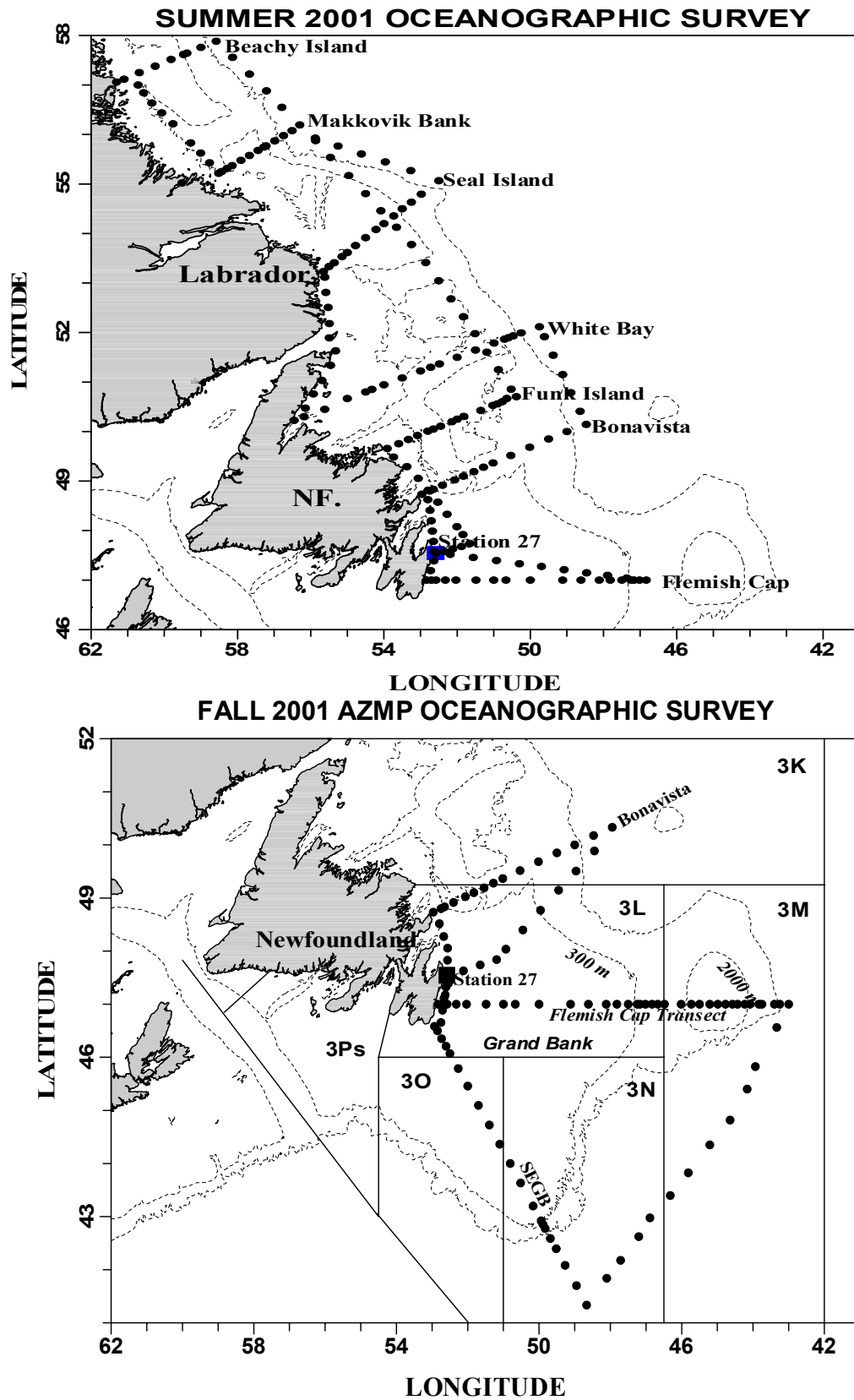


Fig. 1b. Location maps showing the position of all stations occupied during the summer and fall surveys. Bathymetry contours are 300 and 1000 m.

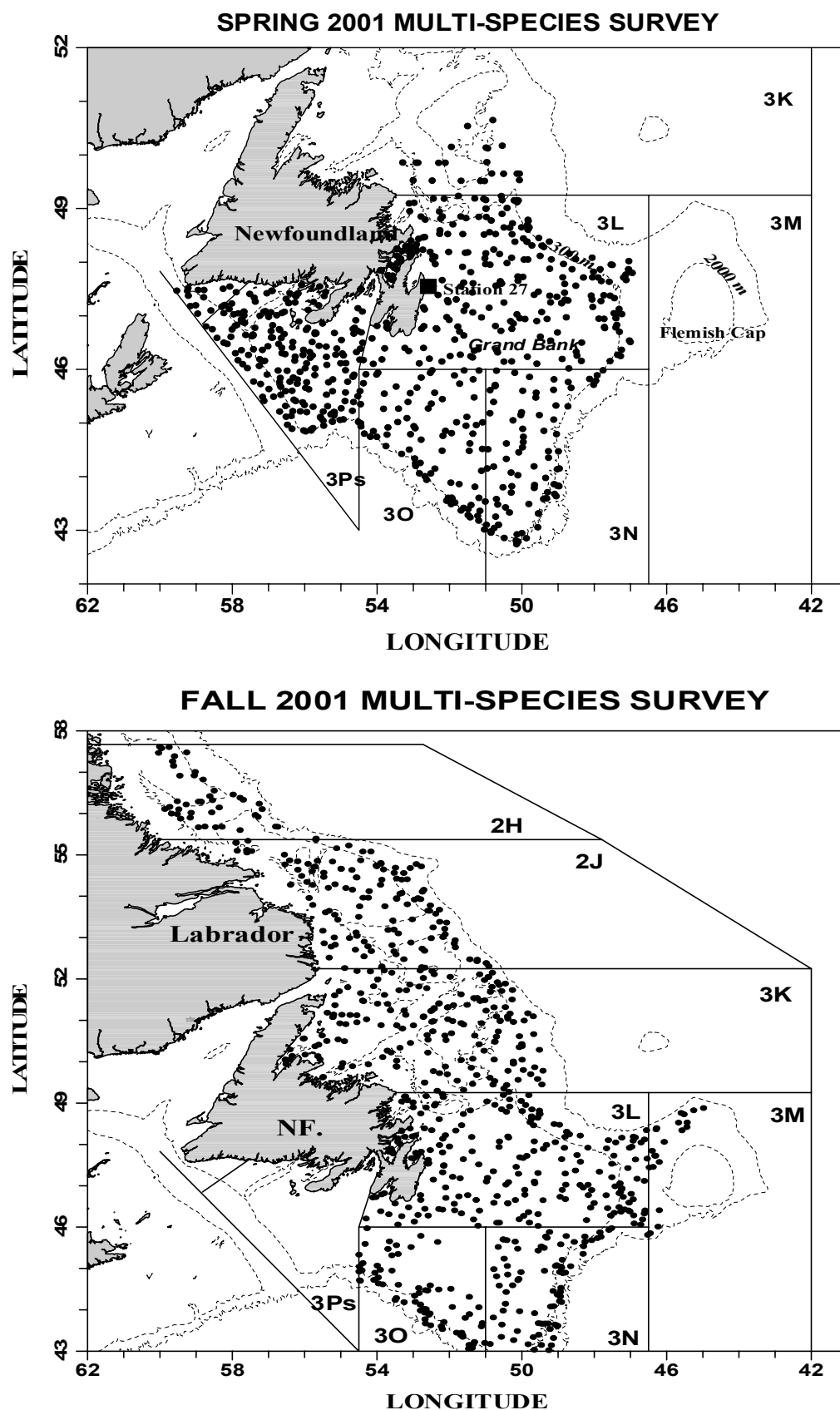


Fig. 1c. Location maps showing the position of sets with oceanographic data from the multi-species surveys during the spring and fall. Bathymetry contours are 300 and 1000 m.

STATION 27 ANNUAL T/S CYCLE

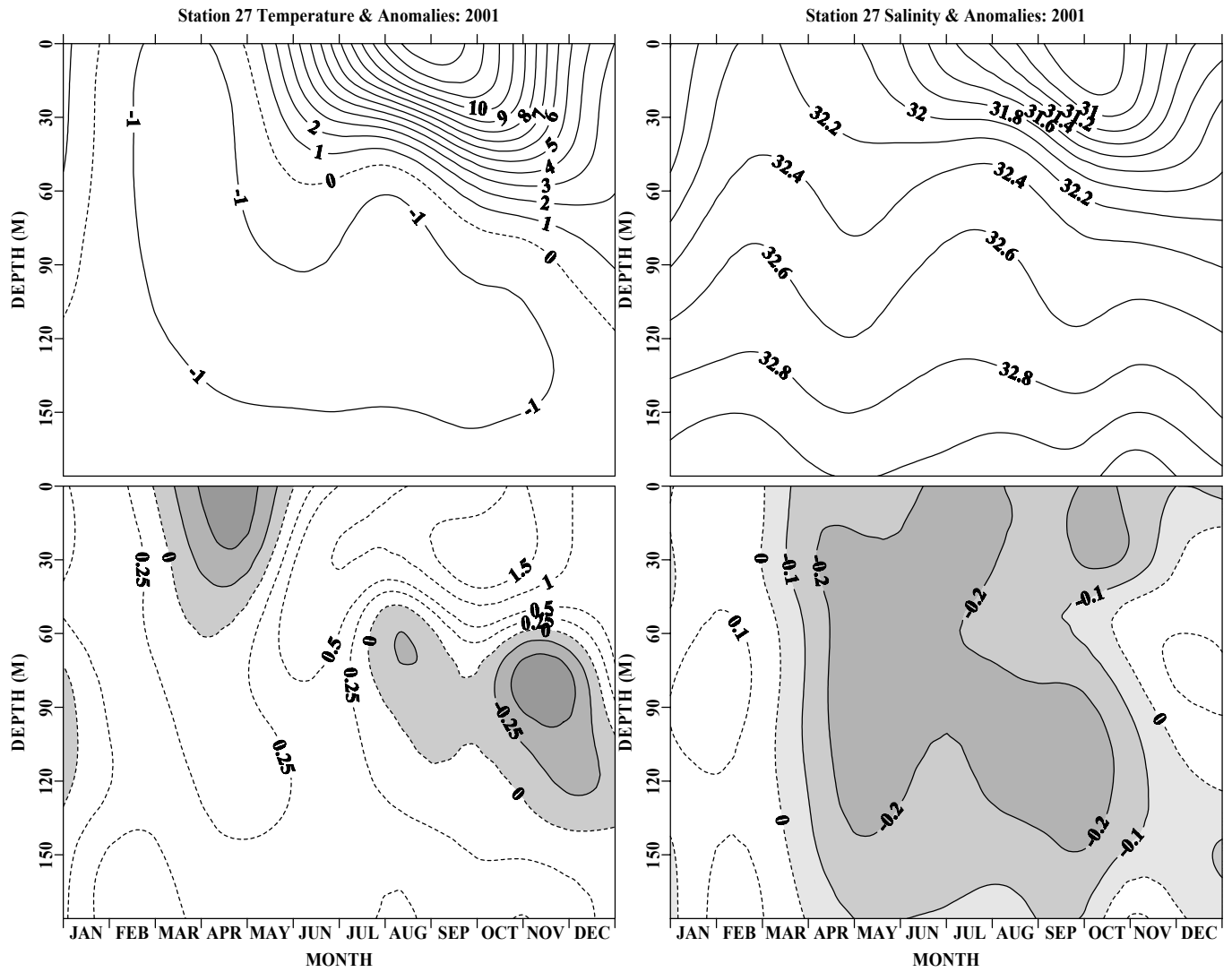


Fig. 2. Monthly temperatures (left panels) and salinity (right panels) and their anomalies (in °C) at Station 27 as a function of depth for 2001.

STATION 27 TEMPERATURE ANOMALIES

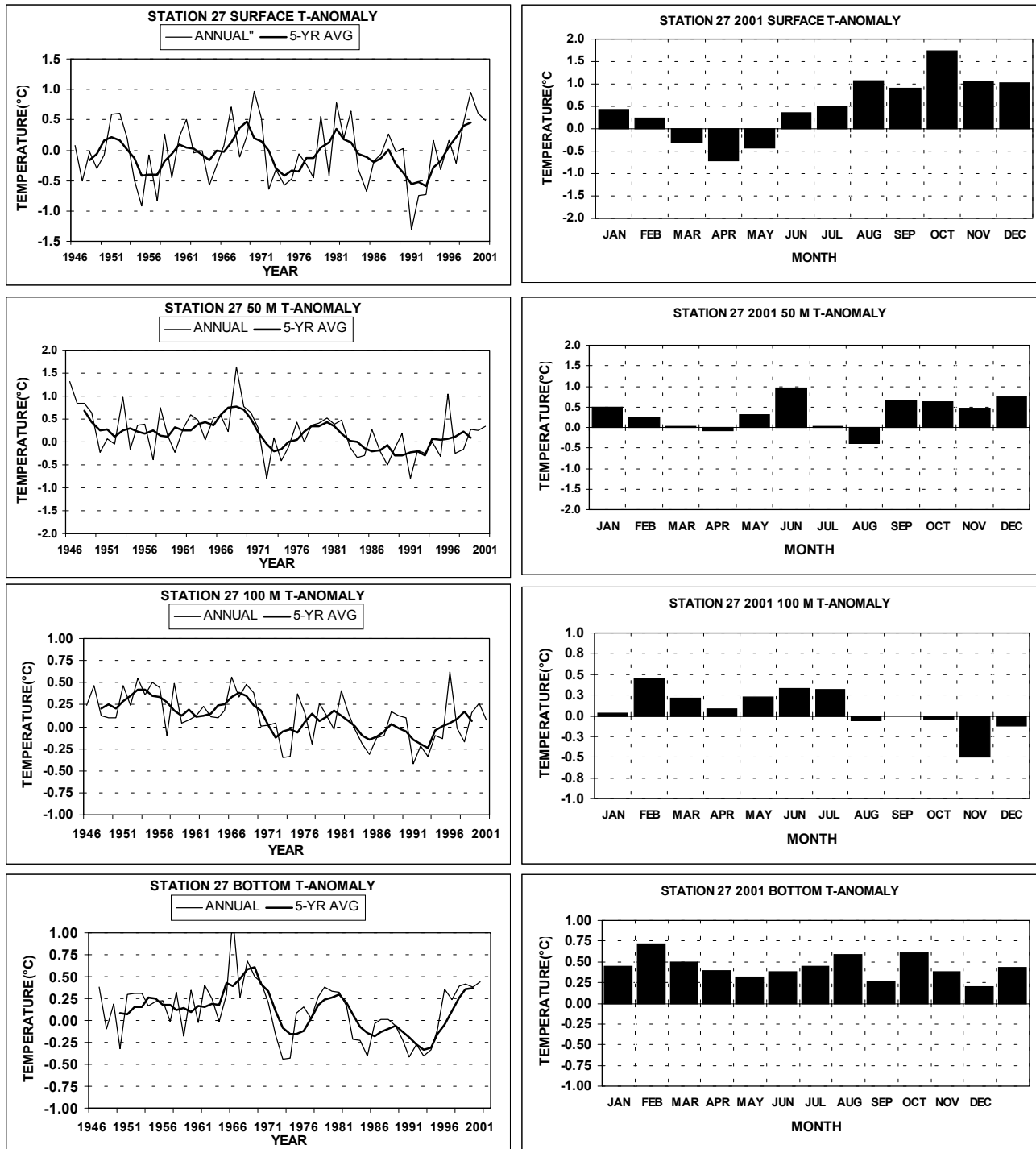


Fig. 3. Station 27 annual temperature anomalies and their 5-year running means at selected depths (left panels) and monthly temperature anomalies (right panels) for 2001.

STATION 27 SALINITY ANOMALIES

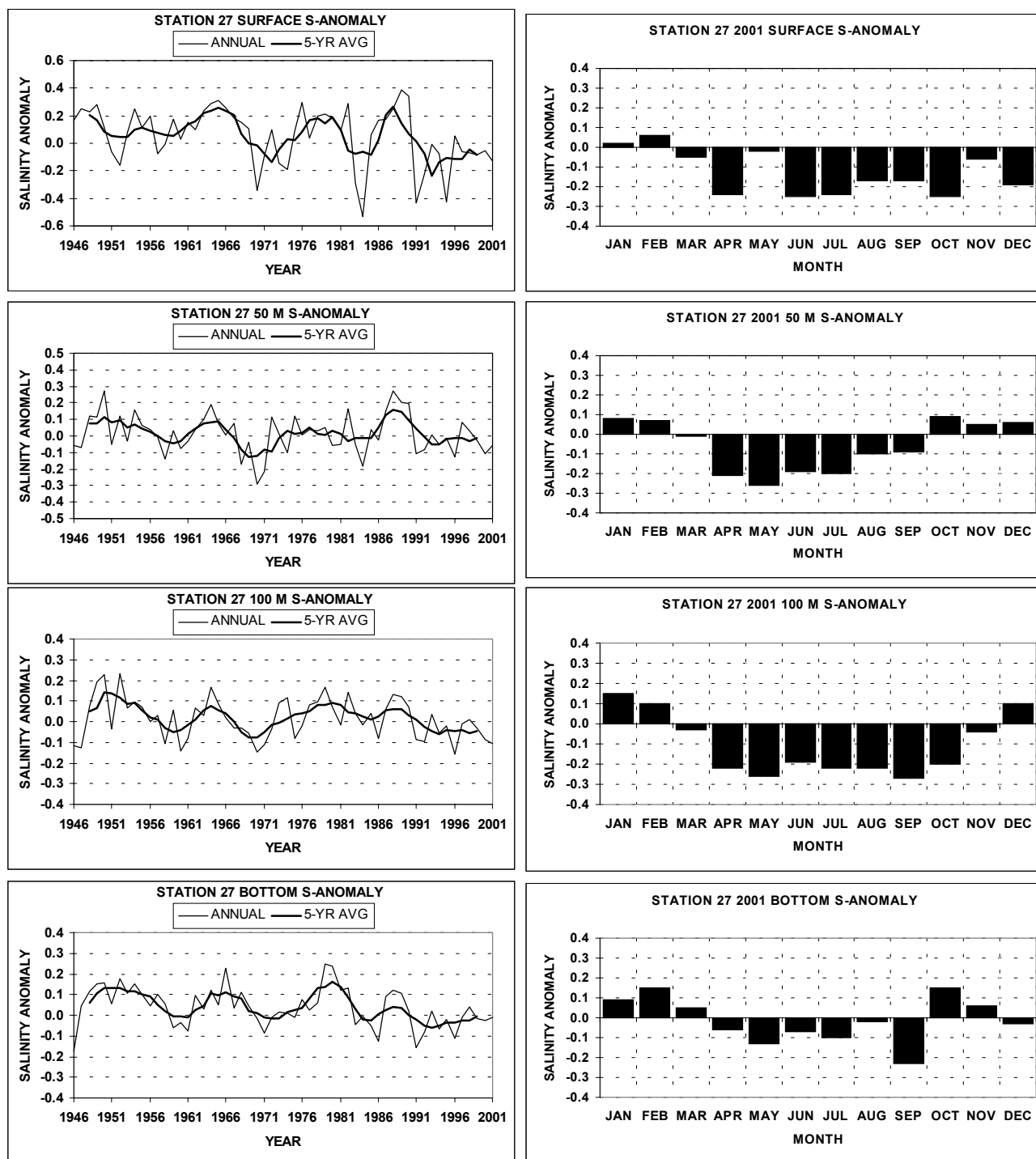


Fig. 4. Station 27 annual salinity anomalies and their 5-year running means at selected depths (left panels) and monthly salinity anomalies (right panels) for 2001.