



NAME OF STREAM (Not Gazetted) (Potts Lagoon Creek)

CONSERVATION DISTRICT 5 STATISTICAL AREA 12

LOCATION OF MOUTH Flows W. into Potts Lag., NW. side of W. Cracroft I., Rge. 1,

Coast Dist. POSITION 50 126 NE.

LENGTH 1 MI. WIDTH FT. DRAINAGE SQ. MI.

COMPOSITION: BEDROCK BOULDER COARSE FINE

SILT & SAND UNCLASSIFIED

GRADIENT:

FALL IN FT/000

0.0 - 2.5	
2.5 - 5.0	
5.0 - 7.5	
7.5 - 10.0	
> 10.0	

WETTED AREA SQ. YD. SPAWNING AREA SQ. YD.

DISCHARGE CFS MAX MIN

TEMPERATURE

BARRIERS OR POINTS OF DIFFICULT ASCENT

- Impassable beaver dams at 1 mi. (1972)

SPAWNING DISTRIBUTION:

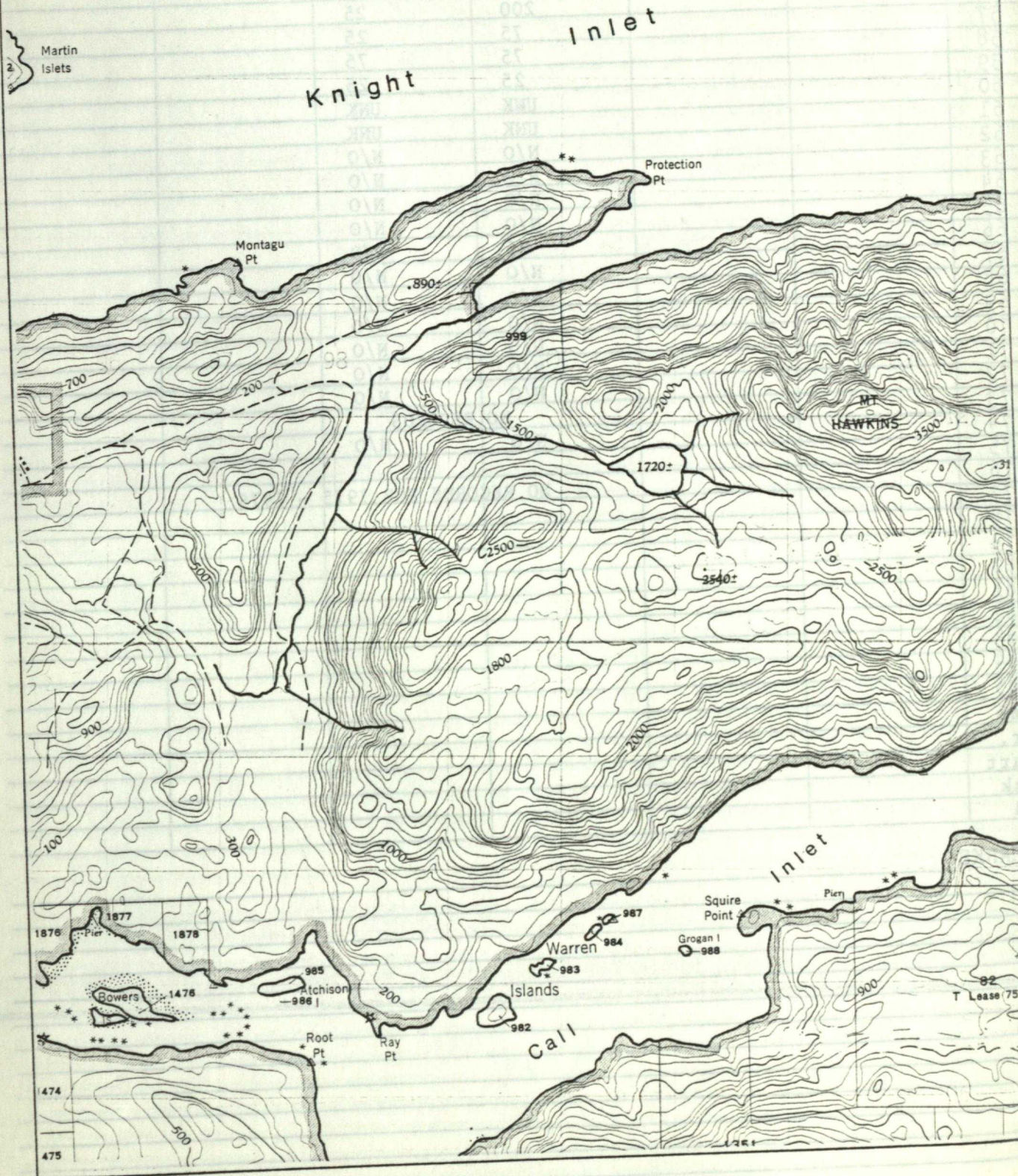
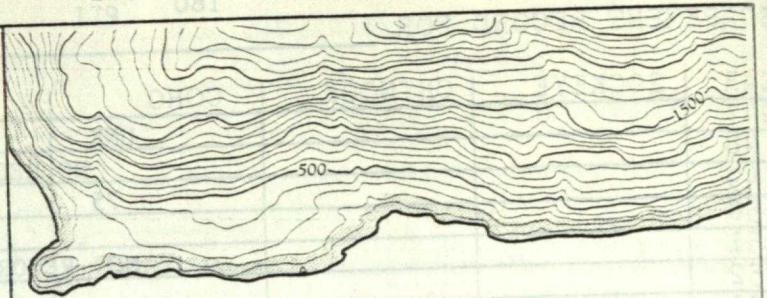
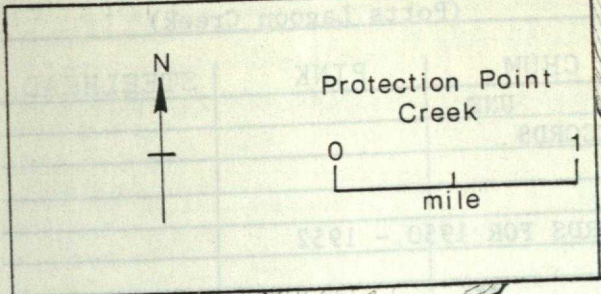
SPECIES	SECTION OF STREAM USED
SOCKEYE	
CHINOOK	
COHO	
CHUM	
PINK (ODD YR)	
PINK (EVEN YR)	
STEELHEAD	

POTENTIAL OF INACCESSIBLE PORTION OF STREAM

GENERAL REMARKS:

- This stream is very sluggish, the water is dark brown and it runs through swampy areas. (1949)

- The portion of stream below the beaver dams contains good spawning gravel. The beaver dams help prevent erosion of the streambed. (1971)



NAME OF STREAM (Not Gazetted) (Protection Point Creek)

CONSERVATION DISTRICT 5 STATISTICAL AREA 12

LOCATION OF MOUTH Flows NE. into Tsakonou Cove, S. side of Knight Inlet, Rge. 1,

Coast Dist. POSITION 50 126 NE.

LENGTH MI. WIDTH FT. DRAINAGE SQ. MI.

COMPOSITION: BEDROCK BOULDER COARSE FINE

SILT & SAND UNCLASSIFIED

GRADIENT:

FALL IN FT/000

0.0 - 2.5	
2.5 - 5.0	
5.0 - 7.5	
7.5 - 10.0	
> 10.0	

WETTED AREA SQ. YD. SPAWNING AREA SQ. YD.

DISCHARGE CFS MAX MIN

TEMPERATURE

BARRIERS OR POINTS OF DIFFICULT ASCENT

- Falls at 2 mi. are passable at high water.

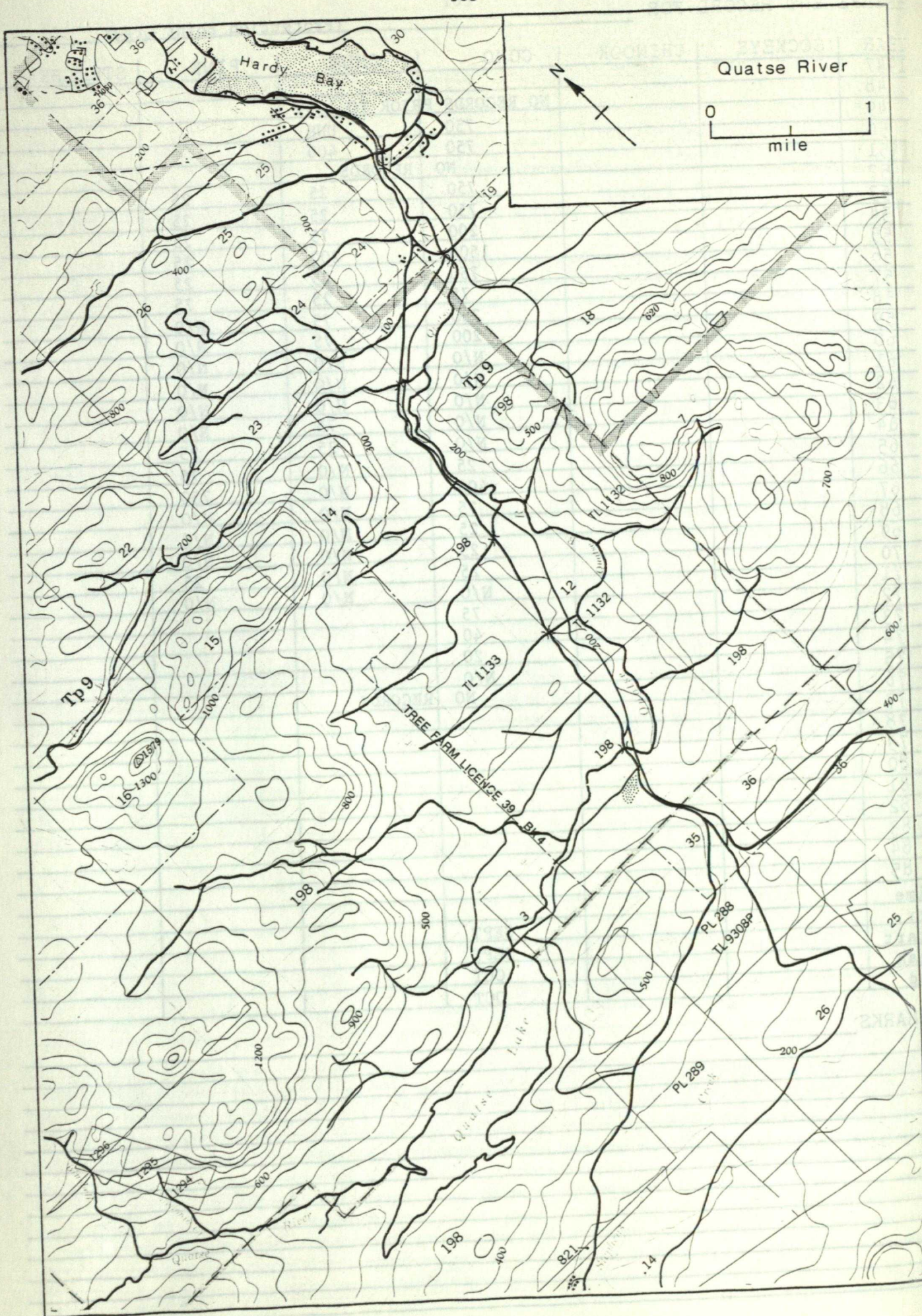
SPAWNING DISTRIBUTION:

SPECIES	SECTION OF STREAM USED
SOCKEYE	
CHINOOK	
COHO	upper reaches
CHUM	
PINK (ODD YR)	
PINK (EVEN YR)	
STEELHEAD	

POTENTIAL OF INACCESSIBLE PORTION OF STREAM

GENERAL REMARKS:

- This stream is fed principally by snow and ice fields with one tributary coming from marshes. The tributary drainage has been logged off. (1950)



NAME OF STREAM QUATSE RIVER
 CONSERVATION DISTRICT 5 STATISTICAL AREA 12
 LOCATION OF MOUTH Flows N. into Hardy Bay, S. of Port Hardy, Rupert Dist.
 POSITION 50 127 NE.
 LENGTH MI. WIDTH FT. DRAINAGE SQ. MI.
 COMPOSITION: BEDROCK BOULDER COARSE FINE
 SILT & SAND UNCLASSIFIED

GRADIENT:
 FALL IN FT/000

0.0 - 2.5	
2.5 - 5.0	
5.0 - 7.5	
7.5 - 10.0	
> 10.0	

WETTED AREA SQ. YD. SPAWNING AREA SQ. YD.
 DISCHARGE CFS MAX MIN
 TEMPERATURE

BARRIERS OR POINTS OF DIFFICULT ASCENT
- Passable cascades at 4 mi. above Quatse Lake.

SPAWNING DISTRIBUTION:

SPECIES	SECTION OF STREAM USED
SOCKEYE	upper reaches
CHINOOK	
COHO	throughout
CHUM	throughout
PINK (ODD YR)	throughout
PINK (EVEN YR)	throughout
STEELHEAD	

POTENTIAL OF INACCESSIBLE PORTION OF STREAM

GENERAL REMARKS:
- Extensive logging operations around Quatse Lake appears to be affecting the level of the lake which reached an all time low for a short period this year. The river was also very low during the summer. (1949)
- Local reports indicate the highest and lowest water levels in history for this watershed. (1950)
- A fish ladder was constructed at the 4 mi. point to alleviate troublesome falls. (1960)
- The 6 mi. falls were improved and pinks readily ascended in quantity for the first time. (1962)

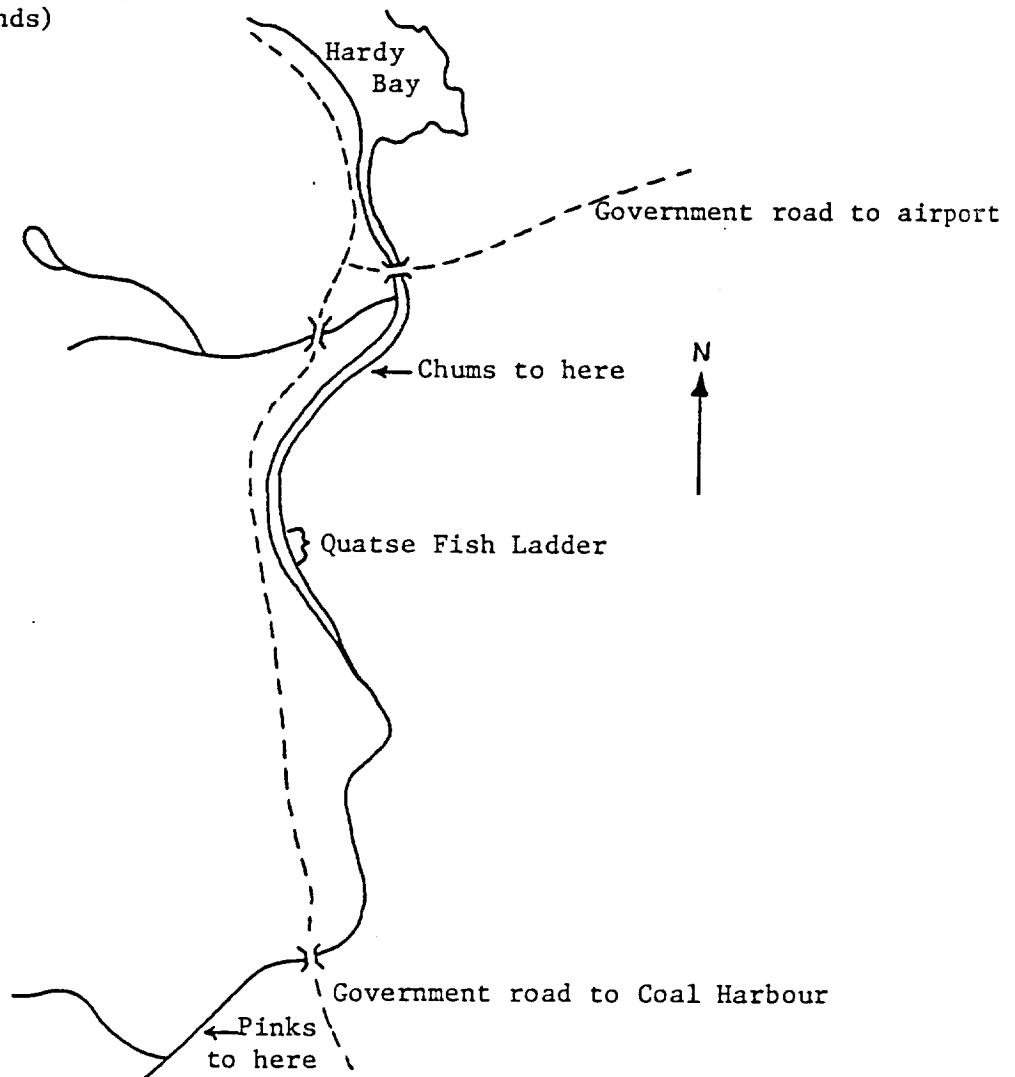
GENERAL REMARKS: (Cont'd)

- This stream is subject to extreme water levels from flood conditions to almost dry. The changes take place almost monthly throughout the year. (1963)
- Most of the spawn in the lower mile was probably lost due to heavy flooding. (1967)
- Several beaver dams provide very good rearing areas for coho fry. The dams also provide an obstacle for migration. (1969)
- This river is subject to severe fluctuations in stream levels. (1970)
- It is felt by the Fisheries Officer that an obstruction on Bluebell Creek tributary should be removed. (1976)

References:

Fraser, F.J., D.T. Lightly & D.D. Bailey. 1974. An Inventory of East Coast Vancouver Island Streams Important to Chum Salmon. D.O.E., F.M.S., Pac. Reg. PAC/T-74-21 p8.

Sketch of Quatse River, 1966
(spawning grounds)



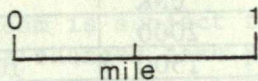
ESCAPEMENT RECORD FOR QUATSE RIVER

YEAR	SOCKEYE	CHINOOK	COHO	CHUM	PINK	STEELHEAD
1947	UNK		UNK	UNK	UNK	
48	UNK		UNK	UNK	UNK	
49	4000		8000	2000	100	
50	3500		3500	1500	100000+	UNK
51	3500		7500	1500	750	400
52	3500		15000	3500	100000+	UNK
53	750		7500	7500	1500	UNK
54	1500		7500	15000	7500	400
55	3500		3500	7500	400	400
56	1500		7500	3500	35000	N/O
57	750		1500	15000	400	400
58	3500		3500	15000	35000	750
59	75		1500	7500	3500	400
60	750		750	7500	7500	400
61	400		7500	15000	750	400
62	7500		7500	1500	75000	750
63	3500		1500	1500	750	1500
64	3500		7500	7500	35000	1500
65	1500		3500	7500	3500	750
66	3500		3500	1500	150000	UNK
67	200		1500	400	25	N/O
68	200		7500	7500	125000	UNK
69	1500		750	750	25	UNK
70	400		3500	750	75000	400
71	750		750	75	1500	400
72	700		400	2500	16000	UNK
73	1600		1500	600	1000	UNK
74	1200		300	400	66000	400
75	700		100	80	300	UNK
76	3600		1200	50	74000	UNK
77						
78						
79						
80						
81						
82						
83						
84						
85						
Time						
Arr.	MAY		SEPT	OCT	E SEPT	
Start	SEPT		L SEPT	OCT	SEPT	
Peak	SEPT		OCT	OCT	L SEPT	
End	OCT		NOV	NOV	E NOV	

REMARKS

almost
ding.
dams
ek
st
S.,

Richmond Bay Creek



NAME OF STREAM (Not Gazetted) (Richmond Bay Creek)

CONSERVATION DISTRICT 5 STATISTICAL AREA 12

LOCATION OF MOUTH Flows NW. into Richmond Bay, S. side of Drury Inlet, Rge. 1,

Coast Dist. POSITION 50 126 NW.

LENGTH MI. WIDTH FT. DRAINAGE SQ. MI.

COMPOSITION: BEDROCK BOULDER COARSE FINE

SILT & SAND UNCLASSIFIED

GRADIENT:

FALL IN FT/000

0.0 - 2.5	
2.5 - 5.0	
5.0 - 7.5	
7.5 - 10.0	
> 10.0	

WETTED AREA SQ. YD. SPAWNING AREA SQ. YD.

DISCHARGE CFS MAX MIN

TEMPERATURE

BARRIERS OR POINTS OF DIFFICULT ASCENT

SPAWNING DISTRIBUTION:

SPECIES	SECTION OF STREAM USED
SOCKEYE	
CHINOOK	
COHO	throughout
CHUM	
PINK (ODD YR)	
PINK (EVEN YR)	
STEELHEAD	

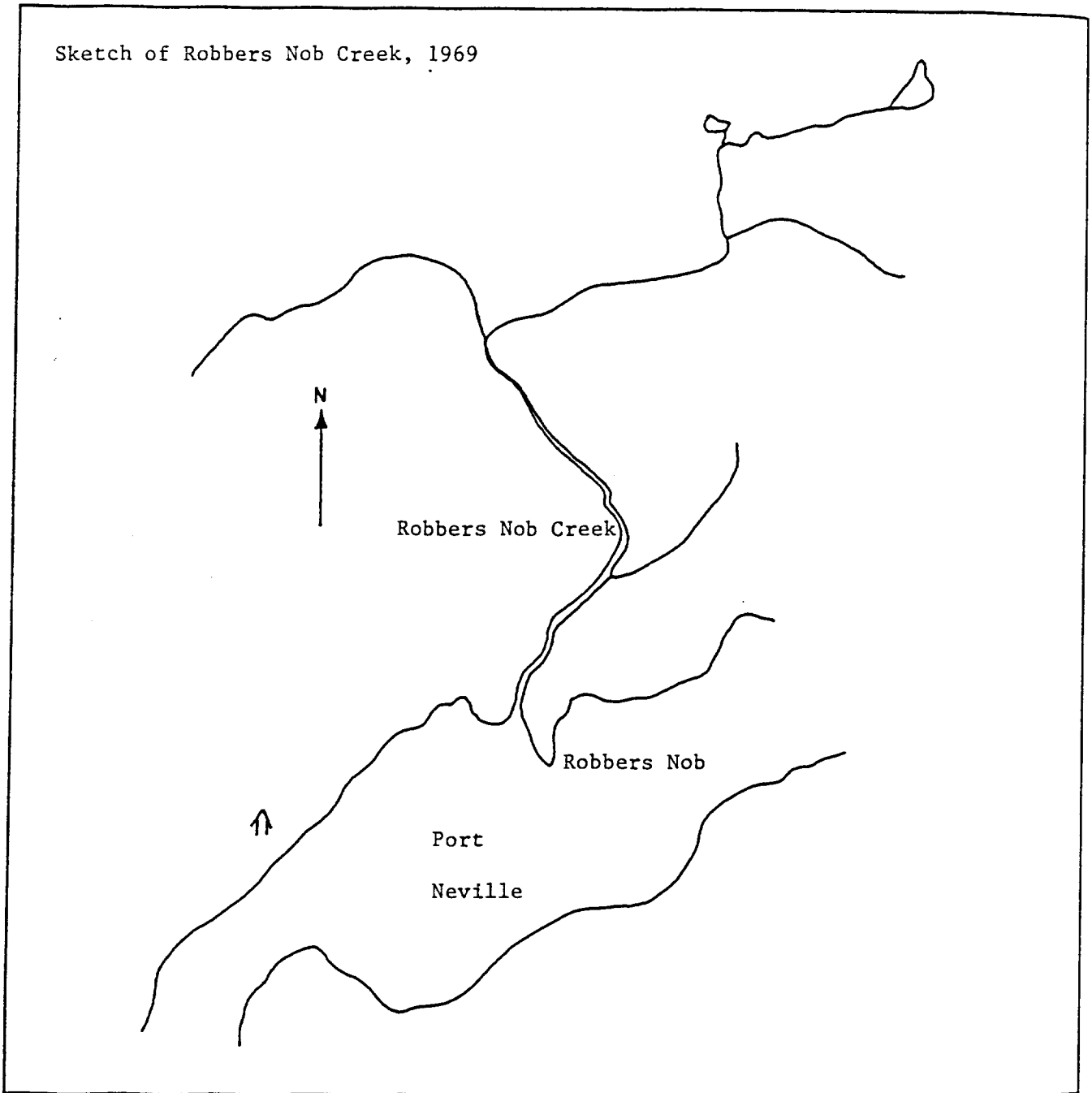
POTENTIAL OF INACCESSIBLE PORTION OF STREAM

GENERAL REMARKS:

- This short stream has been badly damaged by logging operations. (1951)

ROBBERS NOB CREEK - For topographical map, refer to Fulmore River, page 65.

Sketch of Robbers Nob Creek, 1969



NAME OF STREAM (Not Gazetted) 194 (Robbers Nob Creek)

CONSERVATION DISTRICT 5 STATISTICAL AREA 12

LOCATION OF MOUTH Flows S. into Port Neville, E. of Boughey Bay, Rge. 1, Coast Dist. POSITION 50 126 NE.

LENGTH MI. WIDTH FT. DRAINAGE SQ. MI.

COMPOSITION: BEDROCK BOULDER COARSE FINE SILT & SAND UNCLASSIFIED

GRADIENT:

Table with 2 columns: FALL IN FT/000 and empty space for recording values. Rows include 0.0 - 2.5, 2.5 - 5.0, 5.0 - 7.5, 7.5 - 10.0, > 10.0.

WETTED AREA SQ. YD. SPAWNING AREA SQ. YD.

DISCHARGE CFS MAX MIN

TEMPERATURE

BARRIERS OR POINTS OF DIFFICULT ASCENT

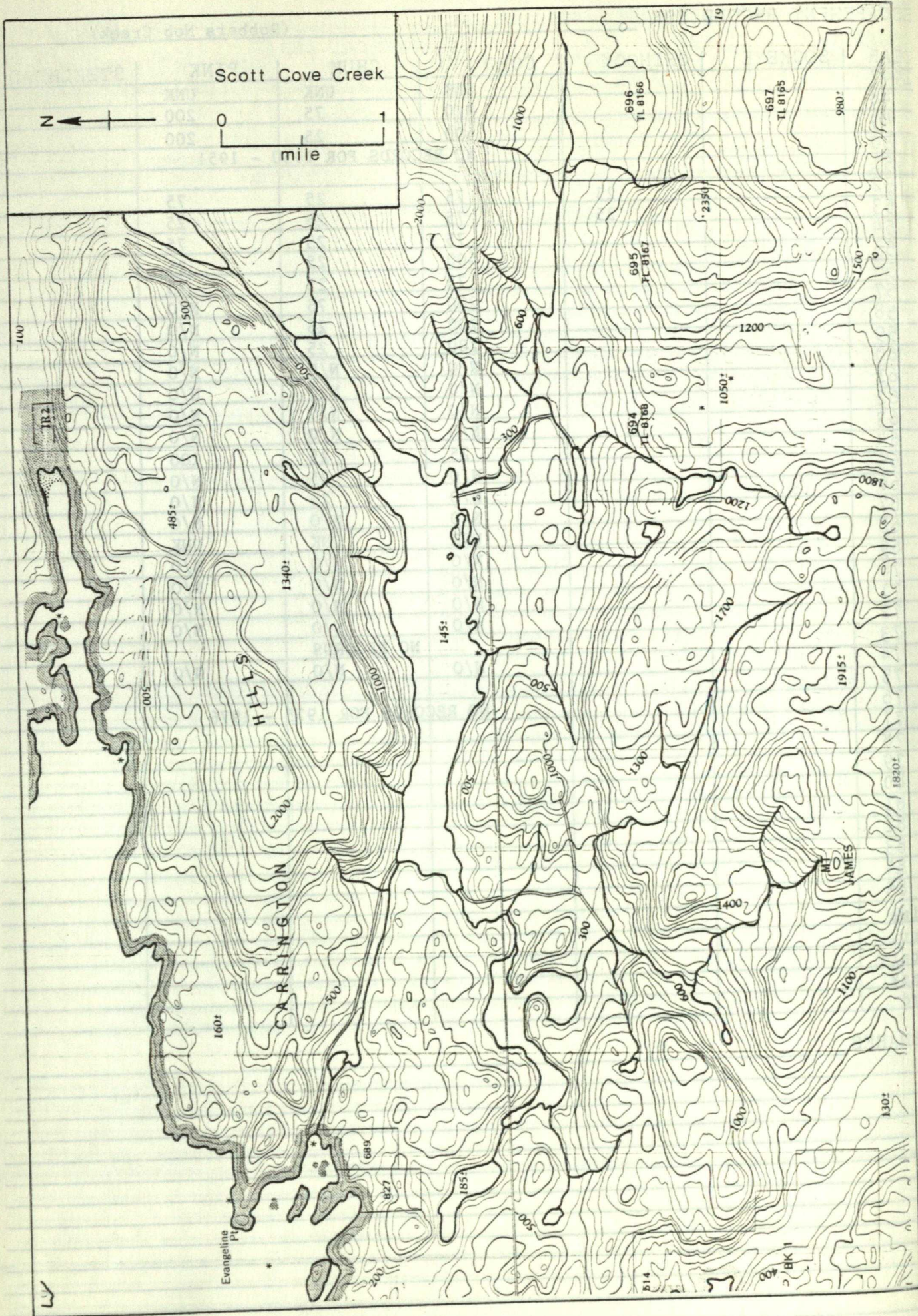
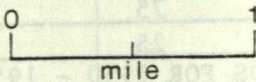
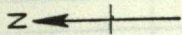
SPAWNING DISTRIBUTION:

Table with 2 columns: SPECIES and SECTION OF STREAM USED. Rows include SOCKEYE, CHINOOK, COHO (scattered throughout), CHUM, PINK (ODD YR) (scattered throughout), PINK (EVEN YR) (scattered throughout), STEELHEAD.

POTENTIAL OF INACCESSIBLE PORTION OF STREAM

GENERAL REMARKS:

Scott Cove Creek



Evangeline Pt

CARRINGTON HILLS

MOUNT JAMES

696
TL 8166

697
TL 8165

695
PL 8167

694
TL 8168

185

827

689

B14

BK 1

LV

NAME OF STREAM (Not Gazetted) (Scott Cove Creek)

CONSERVATION DISTRICT 5 STATISTICAL AREA 12

LOCATION OF MOUTH Flows NW. into Scott Cove, NW. side of Gilford I., Rge. 1,

Coast Dist. POSITION 50 126 NE.

LENGTH 0.25 MI. WIDTH FT. DRAINAGE SQ. MI.

COMPOSITION: BEDROCK BOULDER COARSE FINE SILT & SAND UNCLASSIFIED

GRADIENT:
FALL IN FT/000

0.0 - 2.5	
2.5 - 5.0	
5.0 - 7.5	
7.5 - 10.0	
> 10.0	

WETTED AREA SQ. YD. SPAWNING AREA SQ. YD.

DISCHARGE CFS MAX MIN

TEMPERATURE

BARRIERS OR POINTS OF DIFFICULT ASCENT - Impassable falls and log jams at 0.25 mi. (1975)

SPAWNING DISTRIBUTION:

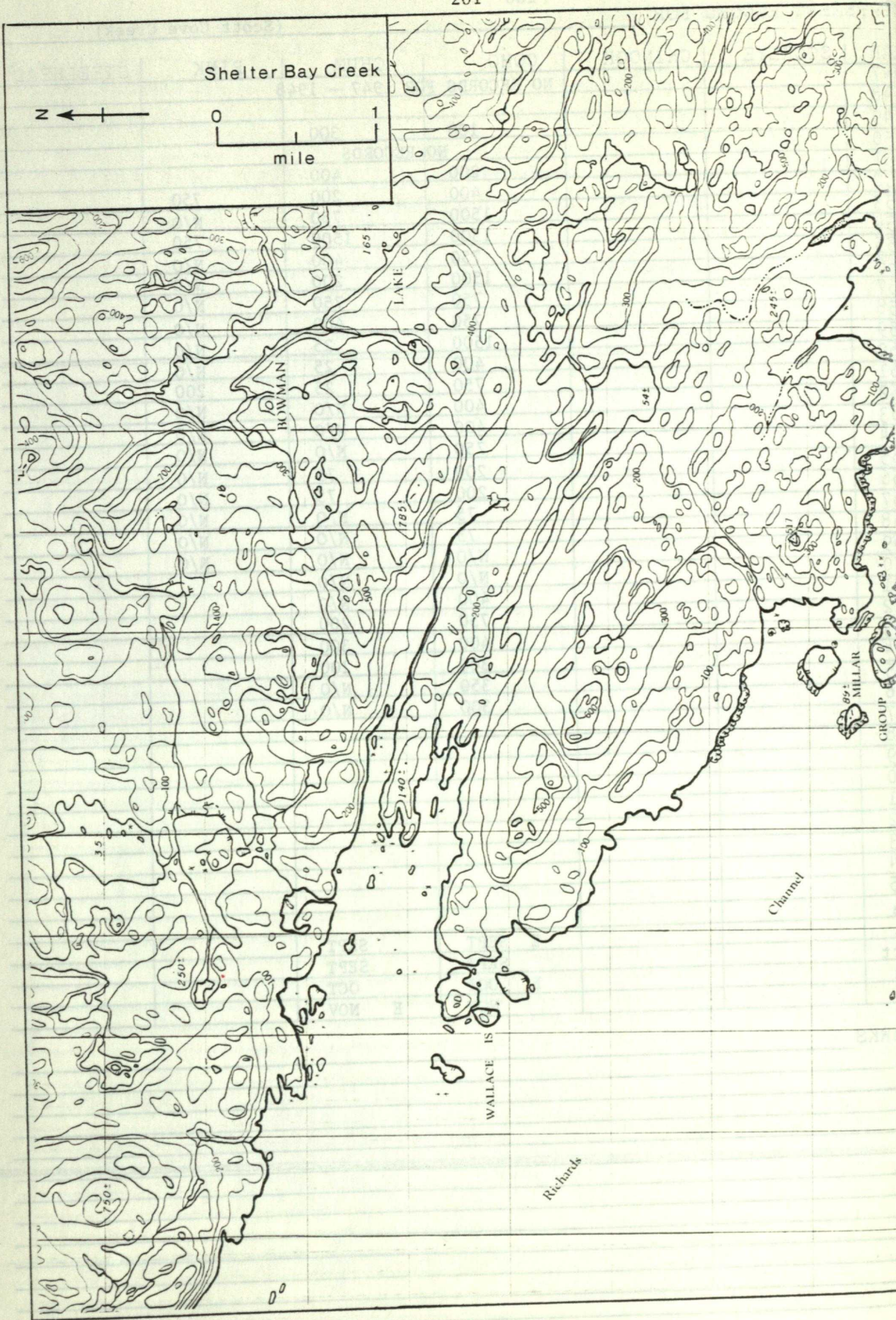
SPECIES	SECTION OF STREAM USED
SOCKEYE	
CHINOOK	
COHO	lower reaches
CHUM	lower reaches
PINK (ODD YR)	
PINK (EVEN YR)	
STEELHEAD	

POTENTIAL OF INACCESSIBLE PORTION OF STREAM

GENERAL REMARKS:

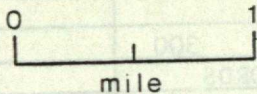
- This stream has been blocked and very badly damaged by logging operations. (1952)
- Considerable logging debris was found in the lake and stream. (1962)
- A logging company is presently operating around Loose Lake. (1970)
- A log crib dam (constructed in the 1930's for logging purposes) at the outlet of Loose Lake gave way resulting in a shifting of log jams and the cutting of new channels by the main stream. (1971)

Reference:
Zablosky, S. 1975. Scott Cove Creek Obstructions. D.O.E., F.M.S., Pac. Reg. Memo. 5900-85-S69 4p & Appendix.



Shelter Bay Creek

N



mile

LAKE

HOWMAN

WALLACE IS

MILLAR GROUP

Charmed

Richards

NAME OF STREAM (Not Gazetted) (Shelter Bay Creek)

CONSERVATION DISTRICT 5 STATISTICAL AREA 12

LOCATION OF MOUTH Flows SW. into Shelter Bay, N. side of Richards Chan., Rge. 1.

Coast Dist. POSITION 50 127 NE.

LENGTH 5 MI. WIDTH FT. DRAINAGE SQ. MI.

COMPOSITION: BEDROCK BOULDER COARSE FINE

SILT & SAND UNCLASSIFIED

GRADIENT:

FALL IN FT/000

0.0 - 2.5	
2.5 - 5.0	
5.0 - 7.5	
7.5 - 10.0	
> 10.0	

WETTED AREA SQ. YD. SPAWNING AREA SQ. YD.

DISCHARGE CFS MAX MIN

TEMPERATURE

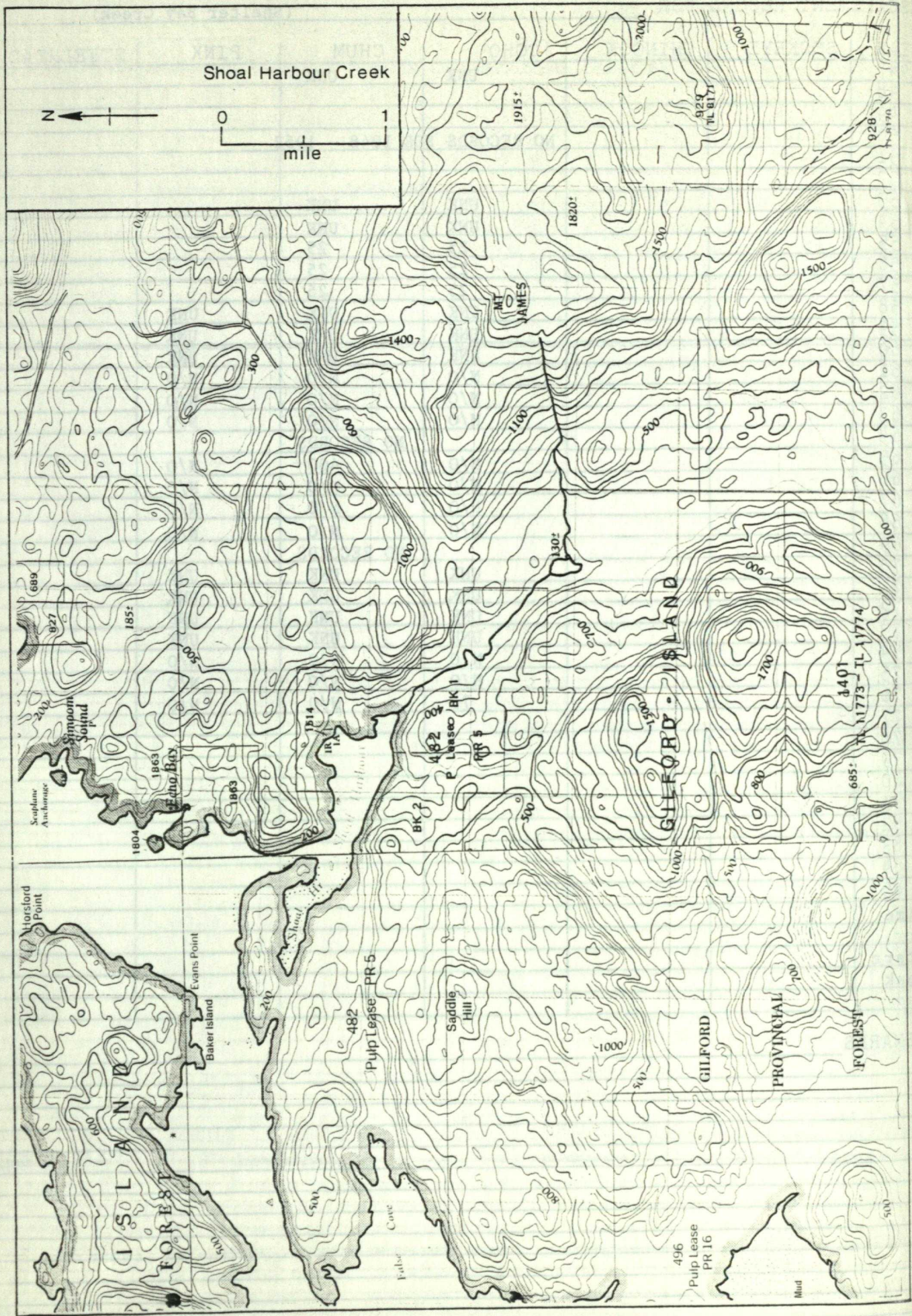
BARRIERS OR POINTS OF DIFFICULT ASCENT

SPAWNING DISTRIBUTION:

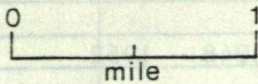
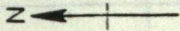
SPECIES	SECTION OF STREAM USED
SOCKEYE	
CHINOOK	
COHO	throughout
CHUM	
PINK (ODD YR)	
PINK (EVEN YR)	
STEELHEAD	

POTENTIAL OF INACCESSIBLE PORTION OF STREAM

GENERAL REMARKS:



Shoal Harbour Creek



mile

MT JAMES

Scaphane Anchorage

Simpson Sound

1804

1863

1863

1855

1804

1863

1863

1855

1804

1863

1863

1855

1804

1863

1863

1855

1804

1863

1863

1855

Horsford Point

Evans Point

Baker Island

ISLAND FOREST

482 Pulp Lease PR 5

Saddle Hill

Cave

Fisher

GILFORD

PROVINCIAL FOREST

496 Pulp Lease PR 16

Mud

GILFORD ISLAND

3401 TL 11773 TL 11774

685

1700

1000

1000

1000

1000

500

1000

1000

1000

500

BK 2

482 P. Lease BK 1

PR 5

PR 5

PR 5

PR 5

PR 5

1820

1915

1500

1500

1500

1500

1500

1500

1500

1500

1500

1500

1500

1500

1820

1915

1500

1500

1500

1500

1500

1500

1500

1500

1500

1500

1500

1500

1820

1915

1500

1500

1500

1500

1500

1500

1500

1500

1500

1500

1500

1500

1820

1915

1500

1500

1500

1500

1500

1500

1500

1500

1500

1500

1500

1500

1820

1915

1500

1500

1500

1500

1500

1500

1500

1500

1500

1500

1500

1500

NAME OF STREAM (Not Gazetted) (Shoal Harbour Creek)
 CONSERVATION DISTRICT 5 STATISTICAL AREA 12
 LOCATION OF MOUTH Flows NW. into Shoal Hr., W. side of Gilford I., Rge. 1, Coast
 Dist. _____ POSITION 50 126 NW.
 LENGTH _____ MI. WIDTH _____ FT. DRAINAGE _____ SQ. MI.
 COMPOSITION: BEDROCK _____ BOULDER _____ COARSE _____ FINE _____
 SILT & SAND _____ UNCLASSIFIED _____

GRADIENT:
 FALL IN FT/000

0.0 - 2.5	
2.5 - 5.0	
5.0 - 7.5	
7.5 - 10.0	
> 10.0	

WETTED AREA _____ SQ. YD. SPAWNING AREA _____ SQ. YD.
 DISCHARGE _____ CFS MAX _____ MIN _____

TEMPERATURE _____

BARRIERS OR POINTS OF DIFFICULT ASCENT _____

SPAWNING DISTRIBUTION:

SPECIES	SECTION OF STREAM USED
SOCKEYE	
CHINOOK	
COHO	1.75 mi. to lake
CHUM	1.75 mi. to lake
PINK (ODD YR)	1.75 mi. to lake
PINK (EVEN YR)	
STEELHEAD	

POTENTIAL OF INACCESSIBLE PORTION OF STREAM _____

GENERAL REMARKS:
 - This stream is returning to normal condition after the affects of logging some years ago. (1950)
 - A logging operation has started to log in the Shoal Harbour area. (1964)
 - Logging operations have disturbed run-off and water levels fluctuate rapidly. (1966)
 - Low water levels and two sizable log jams may have prevented successful spawning.
 Both of the log jams have been removed this year. (1971)

NAME OF STREAM SHUSHARTIE RIVER

CONSERVATION DISTRICT 5 STATISTICAL AREA 12

LOCATION OF MOUTH Flows N. into Shushartie Bay, E. of Nahwitti R., Rupert Dist.

POSITION 50 127 NW.

LENGTH 10 MI. WIDTH FT. DRAINAGE SQ. MI.

COMPOSITION: BEDROCK BOULDER COARSE FINE

SILT & SAND UNCLASSIFIED

GRADIENT:

FALL IN FT/000

0.0 - 2.5	
2.5 - 5.0	
5.0 - 7.5	
7.5 - 10.0	
> 10.0	

WETTED AREA SQ. YD. SPAWNING AREA SQ. YD.

DISCHARGE CFS MAX MIN

TEMPERATURE

BARRIERS OR POINTS OF DIFFICULT ASCENT

- Passable log jams throughout. (1976)

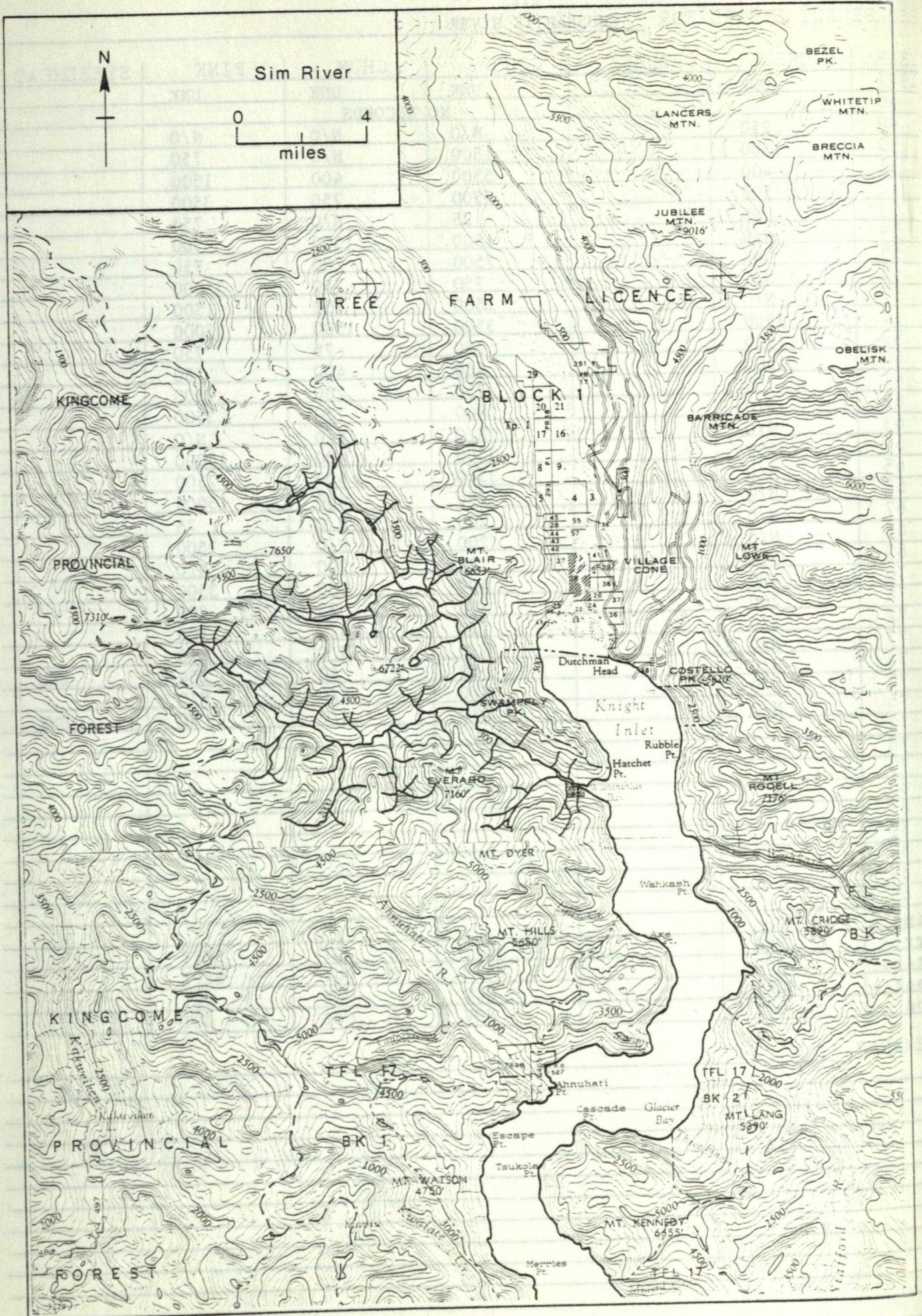
SPAWNING DISTRIBUTION:

SPECIES	SECTION OF STREAM USED
SOCKEYE	to Shushartie Lake
CHINOOK	
COHO	throughout
CHUM	lower reaches
PINK (ODD YR)	lower reaches
PINK (EVEN YR)	
STEELHEAD	

POTENTIAL OF INACCESSIBLE PORTION OF STREAM

GENERAL REMARKS:

- During very low water this stream dries for 200 yds. at 1 mi. (1953)



NAME OF STREAM SIM RIVER (Wahshihlas Creek)

CONSERVATION DISTRICT 5 STATISTICAL AREA 12

LOCATION OF MOUTH Flows SE. into Wahshihlas Bay, Rge. 2, Coast Dist.

POSITION 51 125 SW.

LENGTH MI. WIDTH FT. DRAINAGE SQ. MI.

COMPOSITION: BEDROCK BOULDER COARSE FINE

SILT & SAND UNCLASSIFIED

GRADIENT:

FALL IN FT/000	
0.0 - 2.5	
2.5 - 5.0	
5.0 - 7.5	
7.5 - 10.0	
> 10.0	

WETTED AREA SQ. YD. SPAWNING AREA SQ. YD.

DISCHARGE CFS MAX MIN

TEMPERATURE

BARRIERS OR POINTS OF DIFFICULT ASCENT

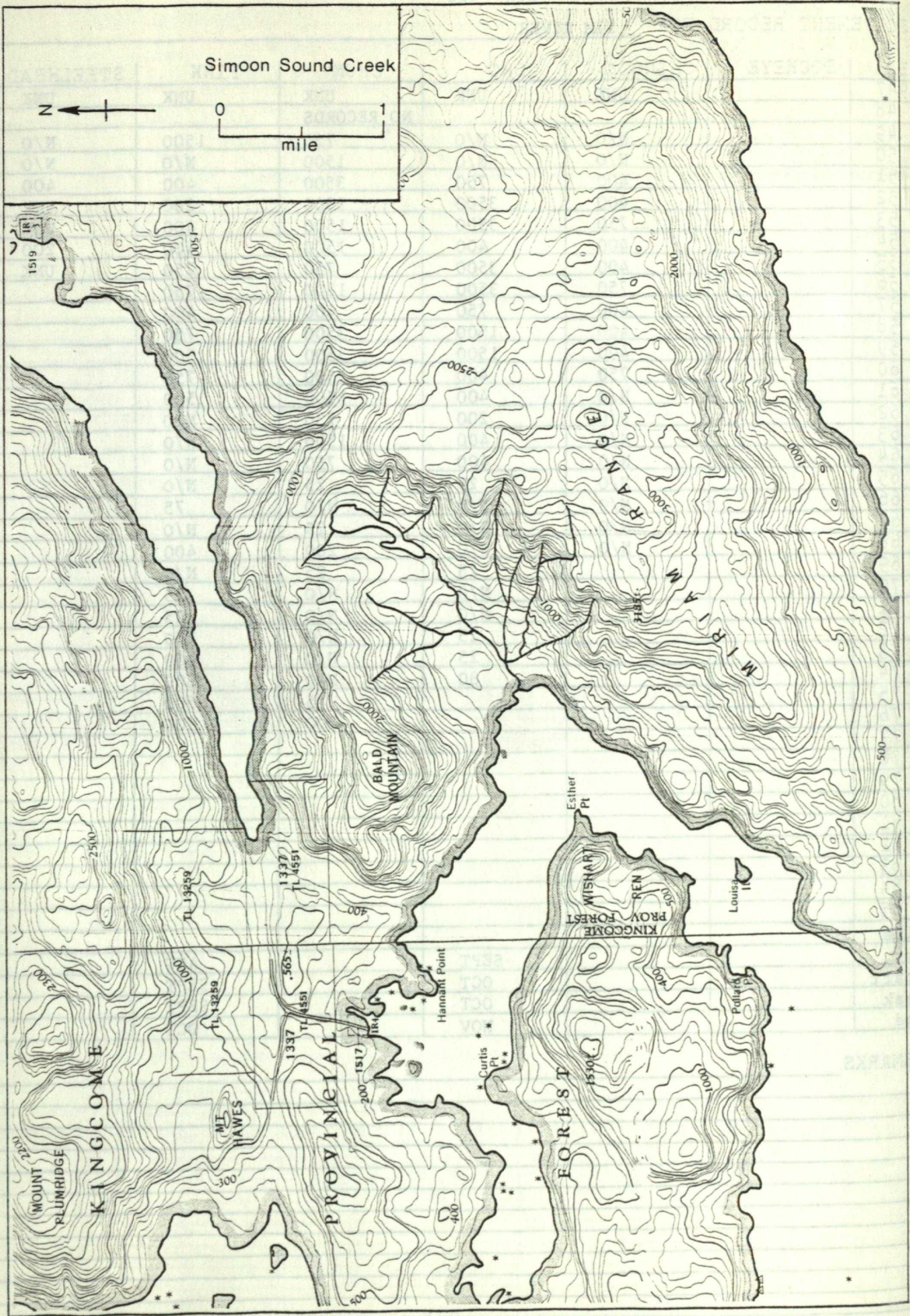
SPAWNING DISTRIBUTION:

SPECIES	SECTION OF STREAM USED
SOCKEYE	
CHINOOK	
COHO	to 2.5 mi.
CHUM	
PINK (ODD YR)	lower 1 mi.
PINK (EVEN YR)	
STEELHEAD	

POTENTIAL OF INACCESSIBLE PORTION OF STREAM

GENERAL REMARKS:

- Considerable glacial silting and erosion is common in this stream. (1967)
- A logging company is building a road 2 mi. upstream, which should improve inspections. (1968)
- Logging is presently finished in this watershed. (1974)
- A flash flood in Nov. washed out all pink spawn. (1975)



NAME OF STREAM (Not Gazetted) (Simoon Sound Creek)

CONSERVATION DISTRICT 5 STATISTICAL AREA 12

LOCATION OF MOUTH Flows W. into Simoon Sd., W. side of Gilford I., Rge. 1.

Coast Dist. POSITION 50 126 NE.

LENGTH MI. WIDTH FT. DRAINAGE SQ. MI.

COMPOSITION: BEDROCK BOULDER COARSE FINE

SILT & SAND UNCLASSIFIED

GRADIENT:

FALL IN FT/000	
0.0 - 2.5	
2.5 - 5.0	
5.0 - 7.5	
7.5 - 10.0	
> 10.0	

WETTED AREA SQ. YD. SPAWNING AREA SQ. YD.

DISCHARGE CFS MAX MIN

TEMPERATURE

BARRIERS OR POINTS OF DIFFICULT ASCENT

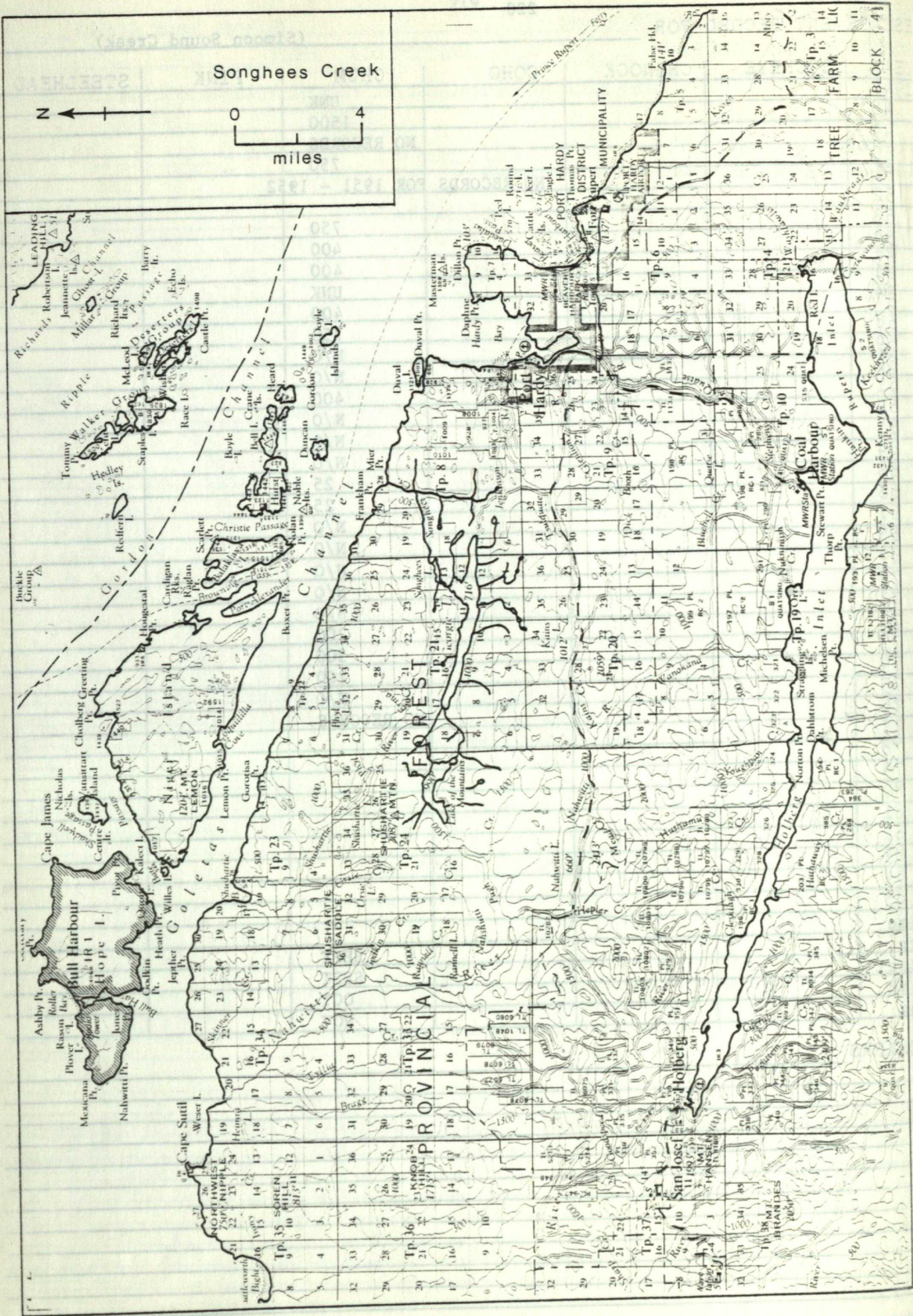
SPAWNING DISTRIBUTION:

SPECIES	SECTION OF STREAM USED
SOCKEYE	
CHINOOK	
COHO	
CHUM	
PINK (ODD YR)	
PINK (EVEN YR)	
STEELHEAD	

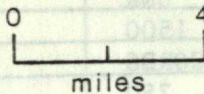
POTENTIAL OF INACCESSIBLE PORTION OF STREAM

GENERAL REMARKS:

- This stream has approx. 0.5 mi. of suitable spawning ground.
- The stream is generally clear of logs, but the lake outlet is blocked by a large inactive beaver dam. (1971)



Songhees Creek



PORT HARDY DISTRICT MUNICIPALITY

COAL HARBOUR MUNICIPALITY

FOREST PROVINCIA

Hobberg

San Jose

COAL HARBOUR

TP 19 03

TP 20

TP 21

TP 22

TP 23

TP 24

TP 25

TP 26

TP 27

TP 28

TP 29

TP 30

TP 31

TP 32

TP 33

TP 34

TP 35

TP 36

TP 37

TP 38

TP 39

TP 40

TP 41

TP 42

TP 43

TP 44

TP 45

TP 46

TP 47

TP 48

TP 49

TP 50

TP 51

TP 52

TP 53

TP 54

TP 55

TP 56

TP 57

TP 58

TP 59

TP 60

TP 61

TP 62

TP 63

TP 64

TP 65

TP 66

TP 67

TP 68

TP 69

TP 70

TP 71

TP 72

TP 73

TP 74

TP 75

TP 76

TP 77

TP 78

TP 79

TP 80

TP 81

TP 82

TP 83

TP 84

TP 85

TP 86

TP 87

TP 88

TP 89

TP 90

TP 91

TP 92

TP 93

TP 94

TP 95

TP 96

TP 97

TP 98

TP 99

TP 100

TP 101

TP 102

TP 103

TP 104

TP 105

TP 106

TP 107

TP 108

TP 109

TP 110

TP 111

TP 112

TP 113

TP 114

TP 115

TP 116

TP 117

TP 118

TP 119

TP 120

TP 121

TP 122

TP 123

TP 124

TP 125

TP 126

TP 127

TP 128

TP 129

TP 130

TP 131

TP 132

TP 133

TP 134

TP 135

TP 136

TP 137

TP 138

TP 139

TP 140

TP 141

TP 142

TP 143

TP 144

TP 145

TP 146

TP 147

TP 148

TP 149

TP 150

TP 151

TP 152

TP 153

TP 154

TP 155

TP 156

TP 157

TP 158

TP 159

TP 160

TP 161

TP 162

TP 163

TP 164

TP 165

TP 166

TP 167

TP 168

TP 169

TP 170

TP 171

TP 172

TP 173

TP 174

TP 175

TP 176

TP 177

TP 178

TP 179

TP 180

TP 181

TP 182

TP 183

TP 184

TP 185

TP 186

TP 187

TP 188

TP 189

TP 190

TP 191

TP 192

TP 193

TP 194

TP 195

TP 196

TP 197

TP 198

TP 199

TP 200

TP 201

TP 202

TP 203

TP 204

TP 205

TP 206

TP 207

TP 208

TP 209

TP 210

TP 211

TP 212

TP 213

TP 214

TP 215

TP 216

TP 217

TP 218

TP 219

TP 220

TP 221

TP 222

TP 223

TP 224

TP 225

TP 226

TP 227

TP 228

TP 229

TP 230

TP 231

TP 232

TP 233

TP 234

TP 235

TP 236

TP 237

TP 238

TP 239

TP 240

TP 241

TP 242

TP 243

TP 244

TP 245

TP 246

TP 247

TP 248

TP 249

TP 250

TP 251

TP 252

TP 253

TP 254

TP 255

TP 256

TP 257

TP 258

TP 259

TP 260

TP 261

TP 262

TP 263

TP 264

TP 265

TP 266

TP 267

TP 268

TP 269

TP 270

TP 271

TP 272

TP 273

TP 274

TP 275

TP 276

TP 277

TP 278

TP 279

TP 280

TP 281

TP 282

TP 283

TP 284

TP 285

TP 286

TP 287

TP 288

TP 289

TP 290

TP 291

TP 292

TP 293

TP 294

TP 295

TP 296

TP 297

NAME OF STREAM STRANBY RIVER (Cache Creek)

CONSERVATION DISTRICT 5 STATISTICAL AREA 12

LOCATION OF MOUTH Flows N. into Shuttleworth Bight, E. of Cape Scott Sett.,

Rupert Dist. _____ POSITION 50 128 NE.

LENGTH 10 MI. WIDTH _____ FT. DRAINAGE _____ SQ. MI.

COMPOSITION: BEDROCK _____ BOULDER _____ COARSE _____ FINE _____

SILT & SAND _____ UNCLASSIFIED _____

GRADIENT:

FALL IN FT/000	
0.0 - 2.5	
2.5 - 5.0	
5.0 - 7.5	
7.5 - 10.0	
> 10.0	

WETTED AREA _____ SQ. YD. SPAWNING AREA _____ SQ. YD.

DISCHARGE _____ CFS MAX _____ MIN _____

TEMPERATURE _____

BARRIERS OR POINTS OF DIFFICULT ASCENT

- Passable log jams throughout stream. (1976)

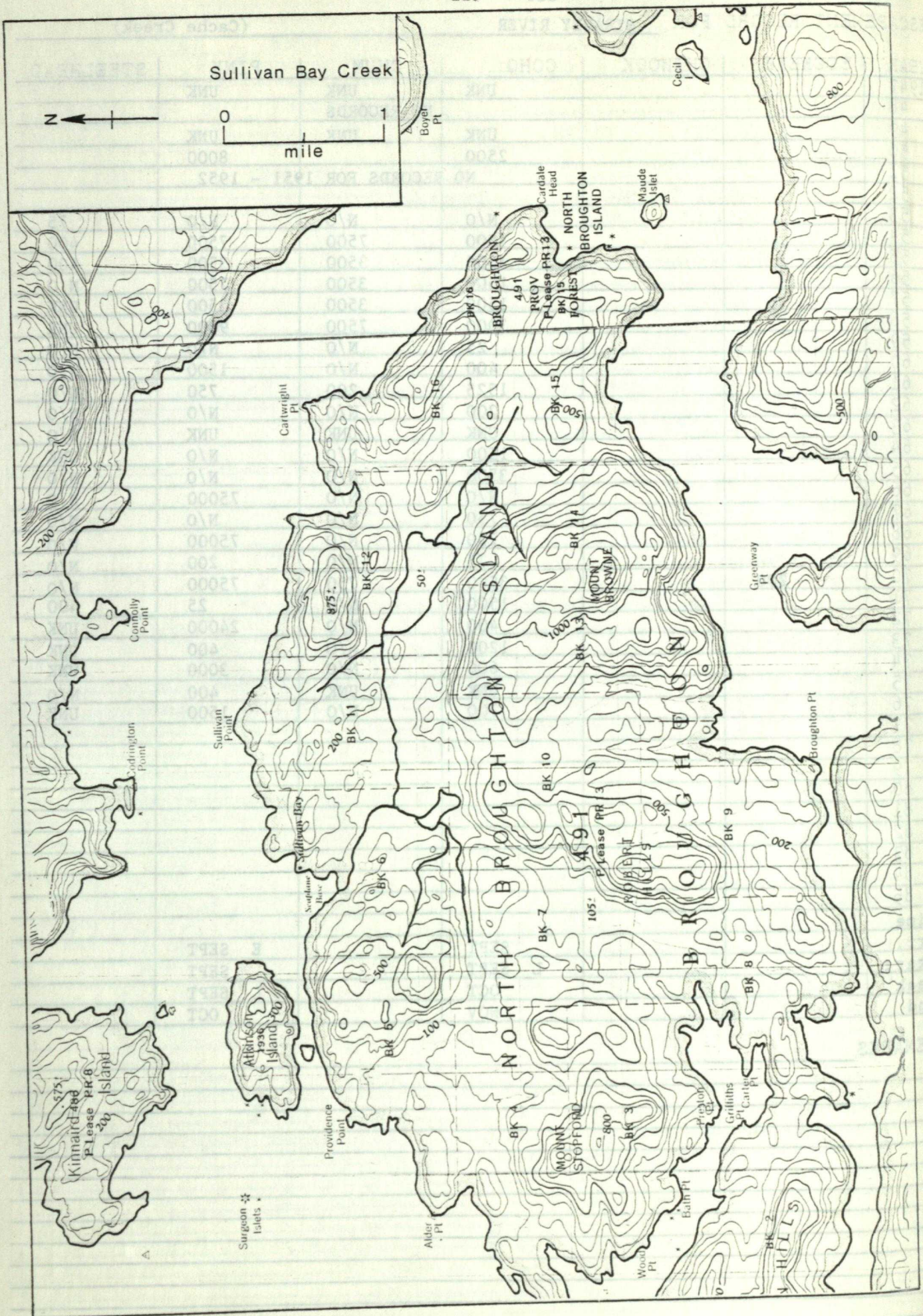
SPAWNING DISTRIBUTION:

SPECIES	SECTION OF STREAM USED
SOCKEYE	
CHINOOK	
COHO	throughout
CHUM	lower 2 mi.
PINK (ODD YR)	throughout
PINK (EVEN YR)	
STEELHEAD	

POTENTIAL OF INACCESSIBLE PORTION OF STREAM _____

GENERAL REMARKS:

- This stream is very hard to get at by foot or by boat, thus, information is lacking. (1972)



NAME OF STREAM (Not Gazetted) 230 (Sullivan Bay Creek)
 CONSERVATION DISTRICT 5 STATISTICAL AREA 12
 LOCATION OF MOUTH Flows NW. into Sullivan Bay, N. side of N. Broughton I., Rge. 1,
 Coast Dist. _____ POSITION 50 126 NW.
 LENGTH _____ MI. WIDTH _____ FT. DRAINAGE _____ SQ. MI.
 COMPOSITION: BEDROCK _____ BOULDER _____ COARSE _____ FINE _____
 SILT & SAND _____ UNCLASSIFIED _____

GRADIENT:
 FALL IN FT/000

0.0 - 2.5	
2.5 - 5.0	
5.0 - 7.5	
7.5 - 10.0	
> 10.0	

WETTED AREA _____ SQ. YD. SPAWNING AREA _____ SQ. YD.
 DISCHARGE _____ CFS MAX _____ MIN _____

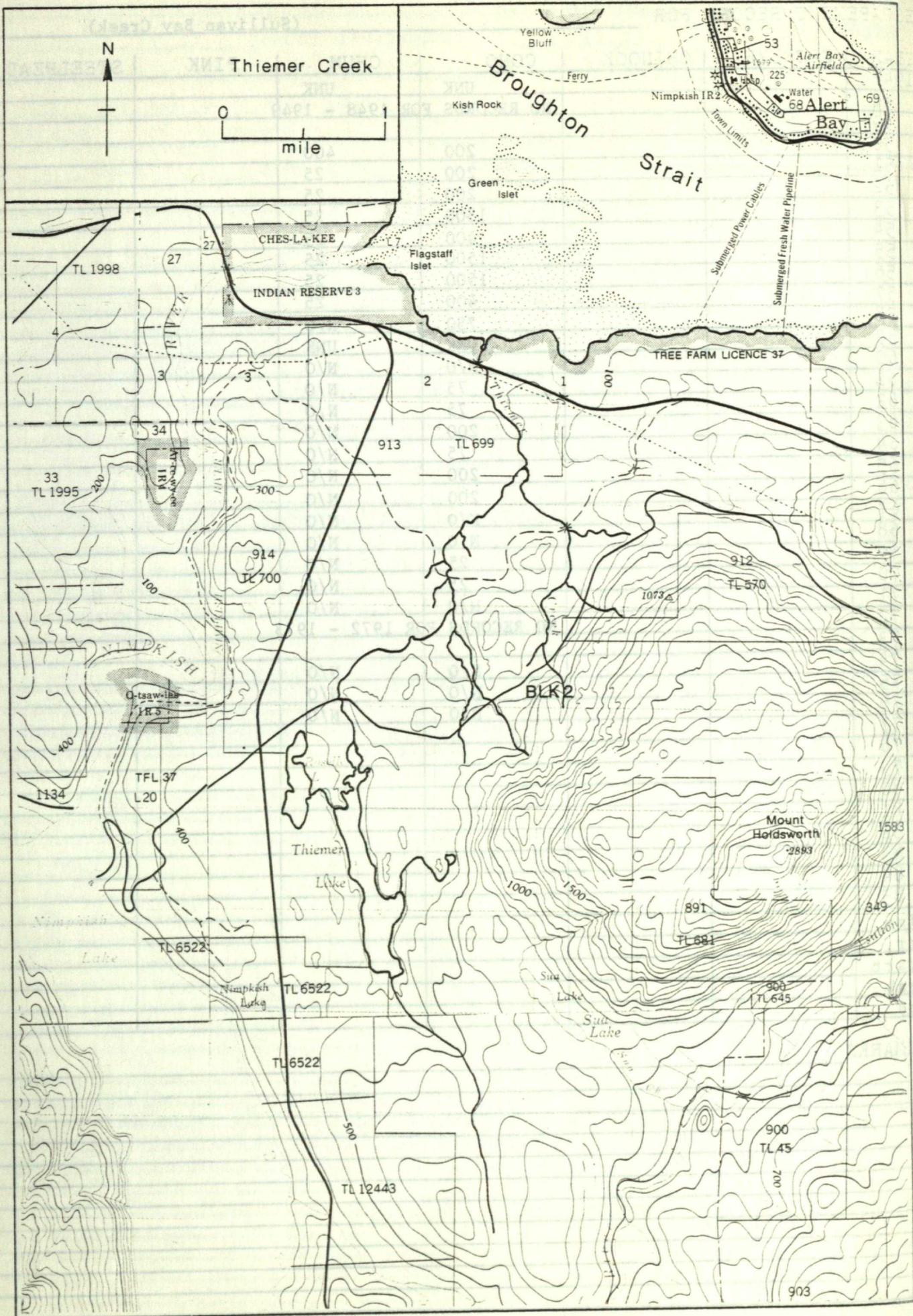
TEMPERATURE _____
 BARRIERS OR POINTS OF DIFFICULT ASCENT _____
 - Cascades at 200 yds. and beaver dams at .75 mi. are passable at high water levels.
 (1973)

SPAWNING DISTRIBUTION:

SPECIES	SECTION OF STREAM USED
SOCKEYE	
CHINOOK	
COHO	throughout
CHUM	
PINK (ODD YR)	
PINK (EVEN YR)	
STEELHEAD	

POTENTIAL OF INACCESSIBLE PORTION OF STREAM _____

GENERAL REMARKS:
 - Logging operations commenced in 1931.
 - This stream was blocked for several years by a dam that was erected by logging operators. Although the dam was removed in 1933, this stream has been permanently damaged. (1944)



NAME OF STREAM THIEMER CREEK (Cohoe Creek)

CONSERVATION DISTRICT 5 STATISTICAL AREA 12

LOCATION OF MOUTH Flows N. into Broughton Str., W. of Englewood, Rupert Dist.

POSITION 50 126 NW.

LENGTH MI. WIDTH FT. DRAINAGE SQ. MI.

COMPOSITION: BEDROCK BOULDER COARSE FINE

SILT & SAND UNCLASSIFIED

GRADIENT:

FALL IN FT/000

0.0 - 2.5	
2.5 - 5.0	
5.0 - 7.5	
7.5 - 10.0	
> 10.0	

WETTED AREA SQ. YD. SPAWNING AREA SQ. YD.

DISCHARGE CFS MAX MIN

TEMPERATURE

BARRIERS OR POINTS OF DIFFICULT ASCENT

- Beaver dams broached as required. (1974)

SPAWNING DISTRIBUTION:

SPECIES	SECTION OF STREAM USED
SOCKEYE	
CHINOOK	
COHO	lower 2 mi.
CHUM	
PINK (ODD YR)	
PINK (EVEN YR)	
STEELHEAD	

POTENTIAL OF INACCESSIBLE PORTION OF STREAM

GENERAL REMARKS:

- This stream is generally in good condition. (1971)

NAME OF STREAM TSITIKA RIVER

CONSERVATION DISTRICT 5 STATISTICAL AREA 12

LOCATION OF MOUTH Flows N. into Robson Bight, W. of Adam R., Rupert Dist.

POSITION 50 126 SW.

LENGTH MI. WIDTH FT. DRAINAGE SQ. MI.

COMPOSITION: BEDROCK BOULDER COARSE FINE

SILT & SAND UNCLASSIFIED

GRADIENT:

FALL IN FT/000

0.0 - 2.5	
2.5 - 5.0	
5.0 - 7.5	
7.5 - 10.0	
> 10.0	

WETTED AREA SQ. YD. SPAWNING AREA SQ. YD.

DISCHARGE CFS MAX MIN

TEMPERATURE

BARRIERS OR POINTS OF DIFFICULT ASCENT

- Passable log jams at 0.75 mi. (1975)

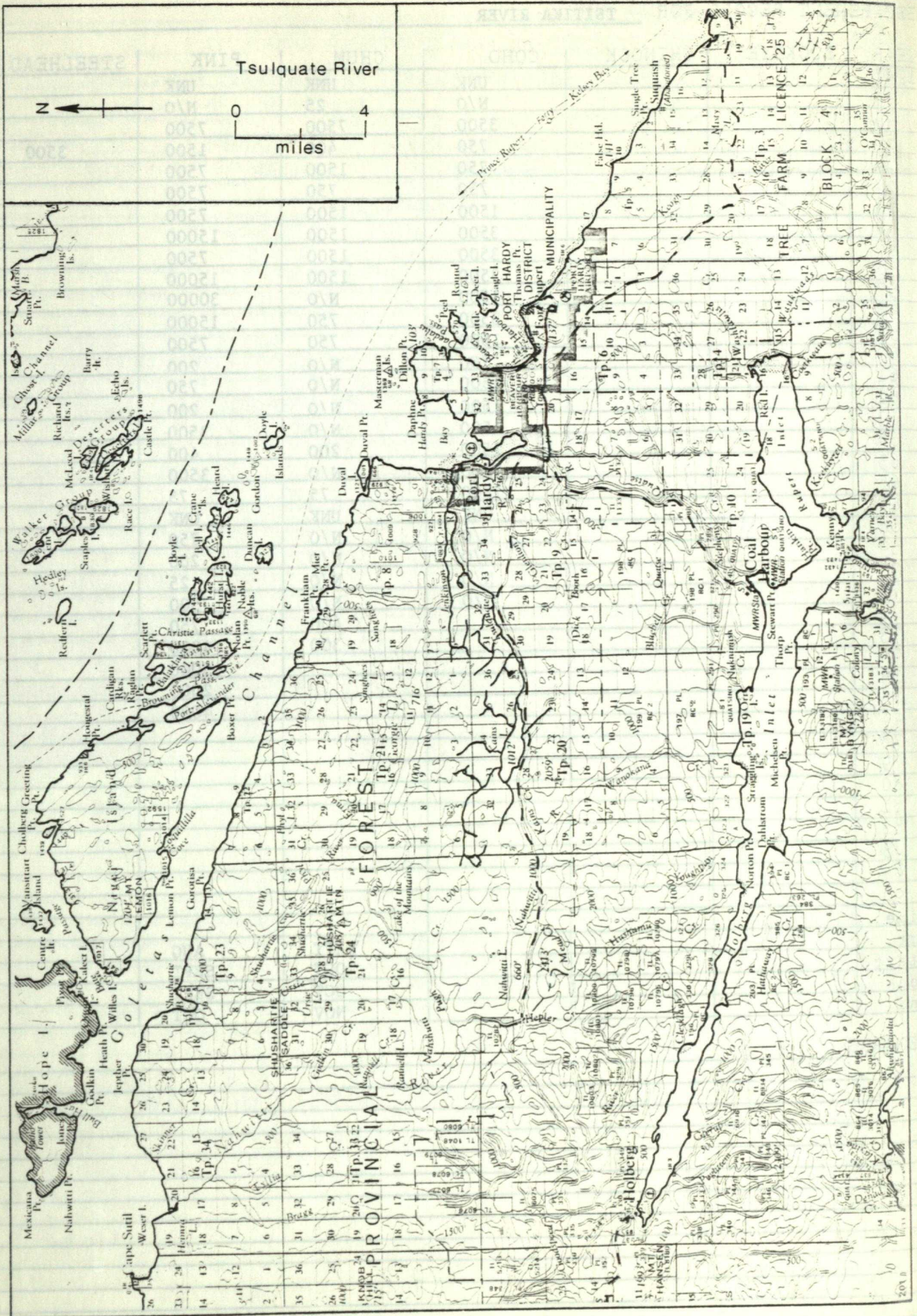
SPAWNING DISTRIBUTION:

SPECIES	SECTION OF STREAM USED
SOCKEYE	
CHINOOK	
COHO	to 1.5 mi.
CHUM	to 1.5 mi.
PINK (ODD YR)	
PINK (EVEN YR)	
STEELHEAD	

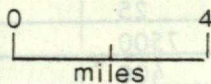
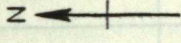
POTENTIAL OF INACCESSIBLE PORTION OF STREAM

GENERAL REMARKS:

- This river contains large expanses of excellent spawning gravel. (1948)



Tsulquate River



PORT HARDY MUNICIPALITY

FOREST

PROVINCIAL

Coal Harbour

Skeena Inlet

Port Hardy

NAME OF STREAM TSULQUATE RIVER

CONSERVATION DISTRICT 5 STATISTICAL AREA 12

LOCATION OF MOUTH Flows E. into Hardy Bay, N. of Port Hardy, Rupert Dist.

POSITION 50 127 NE.

LENGTH 1.5 MI. WIDTH _____ FT. DRAINAGE _____ SQ. MI.

COMPOSITION: BEDROCK _____ BOULDER _____ COARSE _____ FINE _____

SILT & SAND _____ UNCLASSIFIED _____

GRADIENT:

FALL IN FT/000	
0.0 - 2.5	
2.5 - 5.0	
5.0 - 7.5	
7.5 - 10.0	
> 10.0	

WETTED AREA _____ SQ. YD. SPAWNING AREA _____ SQ. YD.

DISCHARGE _____ CFS MAX _____ MIN _____

TEMPERATURE _____

BARRIERS OR POINTS OF DIFFICULT ASCENT _____

- Falls at 1 - 1.5 mi. are passable at certain water levels.

SPAWNING DISTRIBUTION:

SPECIES	SECTION OF STREAM USED
SOCKEYE	
CHINOOK	
COHO	throughout to falls, unknown above falls
CHUM	throughout to falls, unknown above falls
PINK (ODD YR)	throughout to falls, unknown above falls
PINK (EVEN YR)	
STEELHEAD	

POTENTIAL OF INACCESSIBLE PORTION OF STREAM _____

GENERAL REMARKS:

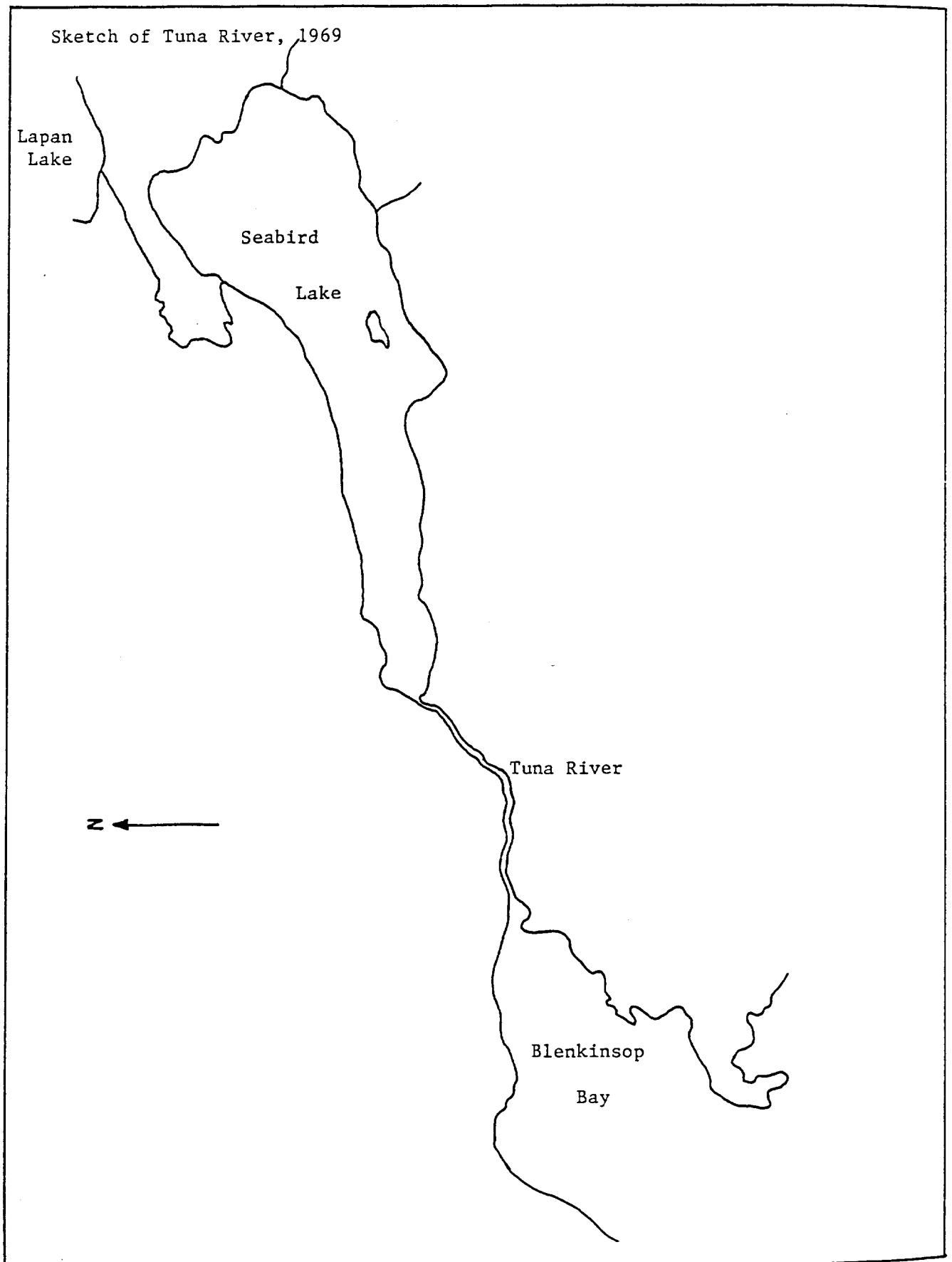
- This river is subject to Indian food fishing. (1968)
- A small dam was constructed by the village of Port Hardy for their water supply. This dam was provided with a fishway which appeared to work very well during pink migration. (1970)
- Port Hardy township is going ahead with plans to construct another dam at the headwaters for additional water. (1974)

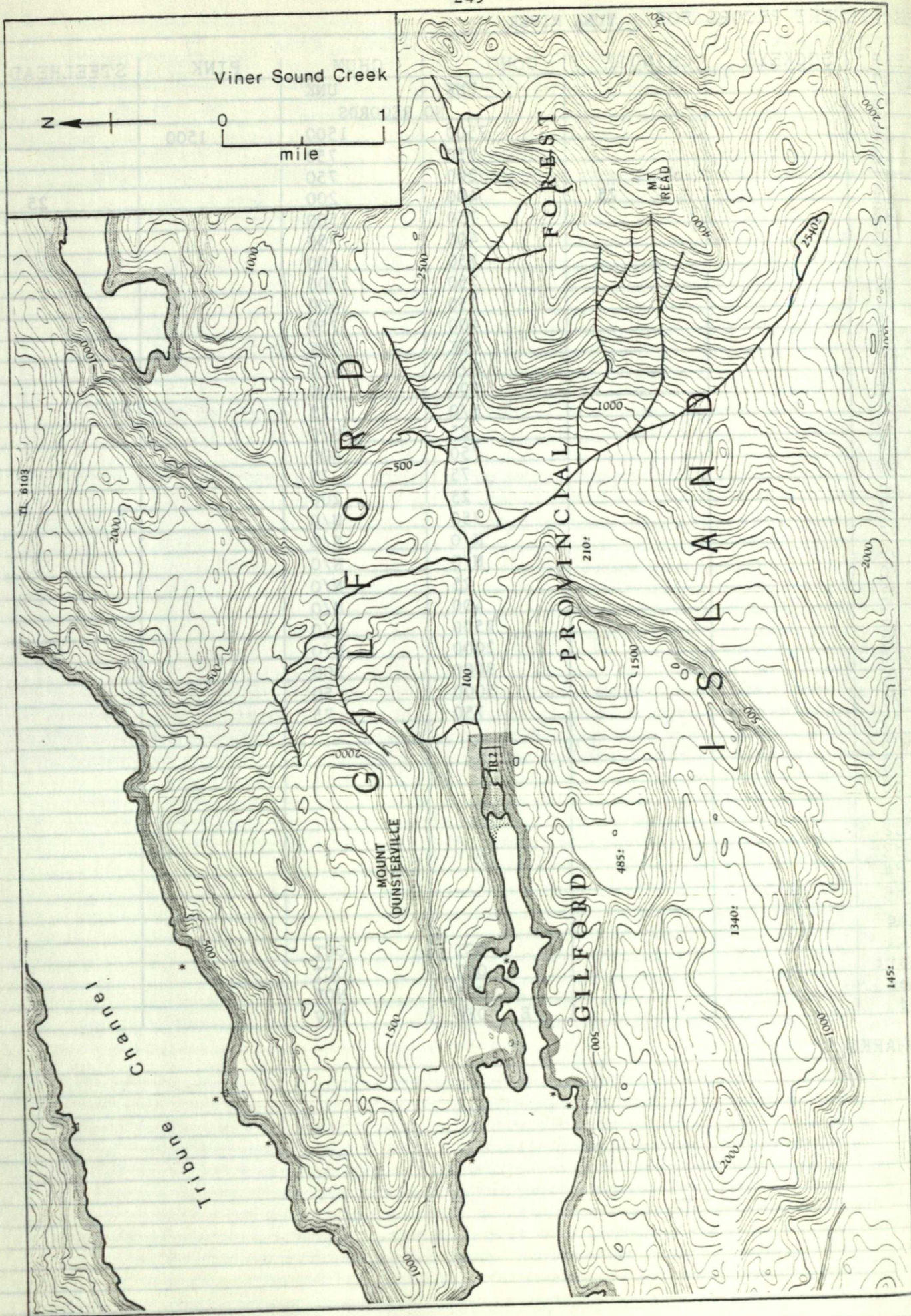
GENERAL REMARKS: (Cont'd)

References:

- Fraser, F.J., D.T. Lightly & D.D. Bailey. 1974. An Inventory of East Coast Vancouver Island Streams Important to Chum Salmon. D.O.E., F.M.S., Pac. Reg. PAC/T-74-21 p7.
- Hamilton, R. 1973. The Type of Diversion Dam at Tsulquate River. D.O.E., F.M.S., Pac. Reg. Memo. 31-3-T29 1p & Appendix.

TUNA RIVER - For topographical map, refer to Fulmore River, page 65.





Viner Sound Creek

N

0 1
mile

TL 6103

Channel

Tribune

WILFORD

FOREST

PROVINCIAL

AND

GILFORD

1340'

1452

MOUNT DUNSTERVILLE

MT READ

2540'

GILFORD

485'

210'

1000'

2500'

500'

100'

1500'

1340'

2000'

2000'

1000'

3000'

1000'

1500'

005'

1000'

500'

2000'

1000'

3000'

2500'

500'

100'

1500'

1340'

2000'

2000'

1000'

3000'

1000'

1500'

005'

1000'

500'

2000'

1000'

3000'

2500'

500'

100'

1500'

1340'

2000'

2000'

1000'

3000'

1000'

1500'

005'

1000'

500'

2000'

1000'

3000'

2500'

500'

100'

1500'

1340'

2000'

2000'

1000'

3000'

1000'

1500'

005'

1000'

500'

2000'

1000'

3000'

2500'

500'

100'

1500'

1340'

2000'

2000'

1000'

3000'

1000'

1500'

005'

1000'

500'

2000'

1000'

3000'

2500'

500'

100'

1500'

1340'

2000'

2000'

1000'

3000'

1000'

1500'

005'

1000'

500'

2000'

1000'

3000'

2500'

500'

100'

1500'

1340'

2000'

2000'

1000'

3000'

1000'

1500'

005'

1000'

500'

2000'

1000'

3000'

2500'

500'

100'

1500'

1340'

2000'

2000'

1000'

3000'

1000'

1500'

005'

1000'

500'

2000'

1000'

3000'

2500'

500'

100'

1500'

1340'

2000'

2000'

1000'

3000'

1000'

1500'

005'

1000'

500'

2000'

1000'

3000'

2500'

500'

100'

1500'

1340'

2000'

2000'

1000'

3000'

1000'

1500'

005'

1000'

500'

2000'

1000'

3000'

2500'

500'

100'

1500'

1340'

2000'

2000'

1000'

3000'

1000'

1500'

005'

1000'

500'

2000'

1000'

3000'

2500'

500'

100'

1500'

1340'

2000'

2000'

1000'

3000'

1000'

1500'

005'

1000'

500'

2000'

1000'

3000'

2500'

500'

100'

1500'

1340'

2000'

2000'

1000'

3000'

1000'

1500'

005'

1000'

500'

2000'

1000'

3000'

2500'

500'

100'

1500'

1340'

2000'

2000'

1000'

3000'

1000'

1500'

005'

1000'

500'

2000'

1000'

3000'

2500'

500'

100'

1500'

1340'

2000'

2000'

1000'

3000'

1000'

1500'

005'

1000'

500'

2000'

1000'

3000'

2500'

500'

100'

1500'

1340'

2000'

2000'

1000'

3000'

1000'

1500'

005'

1000'

500'

2000'

1000'

3000'

2500'

500'

100'

1500'

1340'

2000'

2000'

1000'

3000'

1000'

1500'

005'

1000'

500'

2000'

1000'

3000'

2500'

500'

100'

1500'

1340'

2000'

2000'

1000'

3000'

NAME OF STREAM (Not Gazetted) (Viner Sound Creek)

CONSERVATION DISTRICT 5 STATISTICAL AREA 12

LOCATION OF MOUTH Flows W. into Viner Sd., NW. side of Gilford I., Rge. 1, Coast

Dist. POSITION 50 126 NE.

LENGTH MI. WIDTH FT. DRAINAGE SQ. MI.

COMPOSITION: BEDROCK BOULDER COARSE FINE

SILT & SAND UNCLASSIFIED

GRADIENT:

FALL IN FT/000

0.0 - 2.5	
2.5 - 5.0	
5.0 - 7.5	
7.5 - 10.0	
> 10.0	

WETTED AREA SQ. YD. SPAWNING AREA SQ. YD.

DISCHARGE CFS MAX MIN

TEMPERATURE

BARRIERS OR POINTS OF DIFFICULT ASCENT

SPAWNING DISTRIBUTION:

SPECIES	SECTION OF STREAM USED
SOCKEYE	
CHINOOK	
COHO	throughout
CHUM	throughout
PINK (ODD YR)	throughout
PINK (EVEN YR)	
STEELHEAD	

POTENTIAL OF INACCESSIBLE PORTION OF STREAM

GENERAL REMARKS:

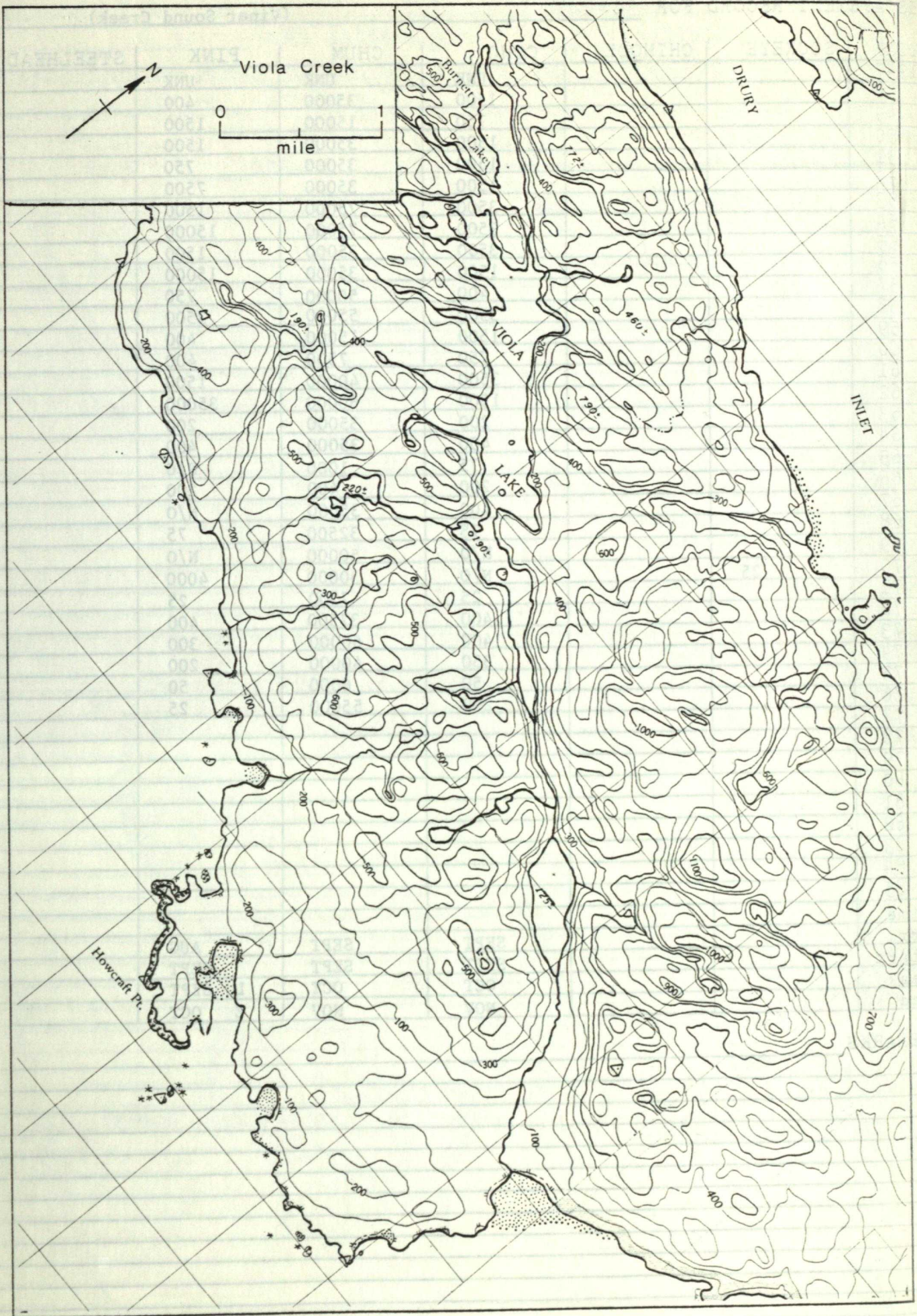
- A native food fishery exists on this river. (1961)
- This stream is slightly unstable with some scouring and blow down, however, good spawning gravel is present. (1971)

ESCAPEMENT RECORD FOR

(Viner Sound Creek)

YEAR	SOCKEYE	CHINOOK	COHO	CHUM	PINK	STEELHEAD
1947			UNK	UNK	UNK	
48			1500	35000	400	
49			750	15000	1500	
50			1500	35000	1500	
51			1500	35000	750	
52			1500	35000	7500	
53			3500	75000	1500	
54			3500	75000	15000	
55			3500	35000	1500	
56			1500	35000	15000	
57			400	50000	750	
58			3500	55000	3500	
59			1500	15000	400	
60			750	7500	400	
61			3500	40000	1500	
62			1500	60000	35000	
63			200	35000	200	
64			400	35000	400	
65			75	1000	N/O	
66			200	400	200	
67			400	35000	N/O	
68			75	32500	75	
69			N/O	50000	N/O	
70	25		N/O	30000	4000	
71			25	7500	25	
72			400	37500	400	
73			400	60000	300	
74			350	40000	200	
75			50	6000	50	
76			200	55000	25	
77						
78						
79						
80						
81						
82						
83						
84						
85						
Time						
Arr.			SEPT	SEPT	AUG	
Start			SEPT	SEPT	SEPT	
Peak			OCT	OCT	L SEPT	
End			NOV	NOV	E OCT	

REMARKS



NAME OF STREAM (Not Gazetted) (Viola Creek)

CONSERVATION DISTRICT 5 STATISTICAL AREA 12

LOCATION OF MOUTH Flows SE. into Wells Passage, S. of Drury Inlet, Rge. 1, Coast

Dist. POSITION 50 127 NE.

LENGTH 0.5 MI. WIDTH FT. DRAINAGE SQ. MI.

COMPOSITION: BEDROCK BOULDER COARSE FINE

SILT & SAND UNCLASSIFIED

GRADIENT:

FALL IN FT/000

0.0 - 2.5	
2.5 - 5.0	
5.0 - 7.5	
7.5 - 10.0	
> 10.0	

WETTED AREA SQ. YD. SPAWNING AREA SQ. YD.

DISCHARGE CFS MAX MIN

TEMPERATURE

BARRIERS OR POINTS OF DIFFICULT ASCENT

- Impassable log jams at 0.5 mi. (1974)

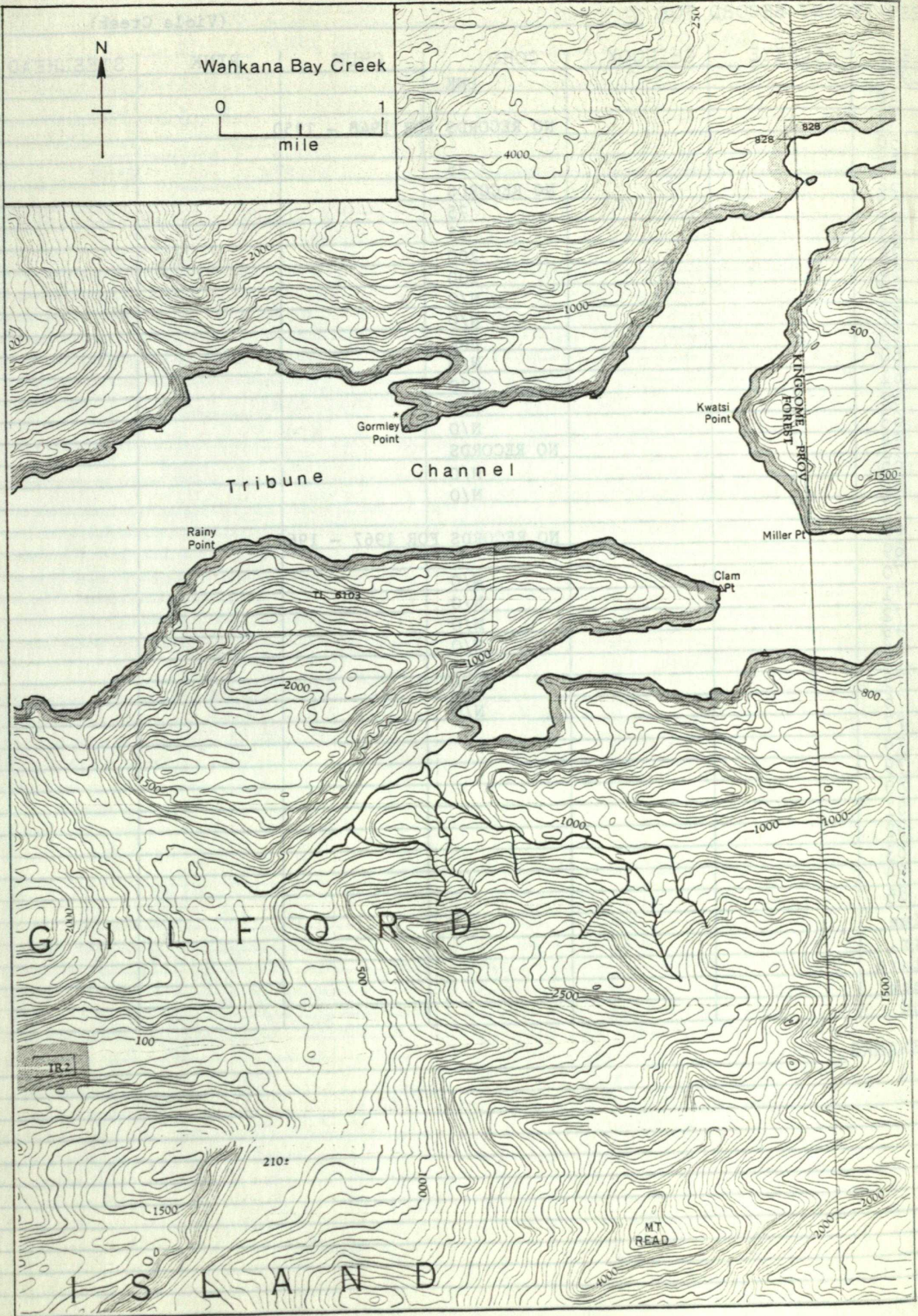
SPAWNING DISTRIBUTION:

SPECIES	SECTION OF STREAM USED
SOCKEYE	
CHINOOK	
COHO	
CHUM	
PINK (ODD YR)	
PINK (EVEN YR)	
STEELHEAD	

POTENTIAL OF INACCESSIBLE PORTION OF STREAM

GENERAL REMARKS:

- Majority of log jams were removed this year. (1971)



NAME OF STREAM (Not Gazetted) (Wahkana Bay Creek)

CONSERVATION DISTRICT 5 STATISTICAL AREA 12

LOCATION OF MOUTH Flows E. into Wahkana Bay, N. side of Gilford I., Rge. 1,

Coast Dist. POSITION 50 126 NE.

LENGTH MI. WIDTH FT. DRAINAGE SQ. MI.

COMPOSITION: BEDROCK BOULDER COARSE FINE

SILT & SAND UNCLASSIFIED

GRADIENT:

FALL IN FT/000

0.0 - 2.5
2.5 - 5.0
5.0 - 7.5
7.5 - 10.0
> 10.0

WETTED AREA SQ. YD. SPAWNING AREA SQ. YD.

DISCHARGE CFS MAX MIN

TEMPERATURE

BARRIERS OR POINTS OF DIFFICULT ASCENT

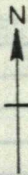
SPAWNING DISTRIBUTION:

SPECIES	SECTION OF STREAM USED
SOCKEYE	
CHINOOK	
COHO	
CHUM	lower 1 mi.
PINK (ODD YR)	
PINK (EVEN YR)	
STEELHEAD	

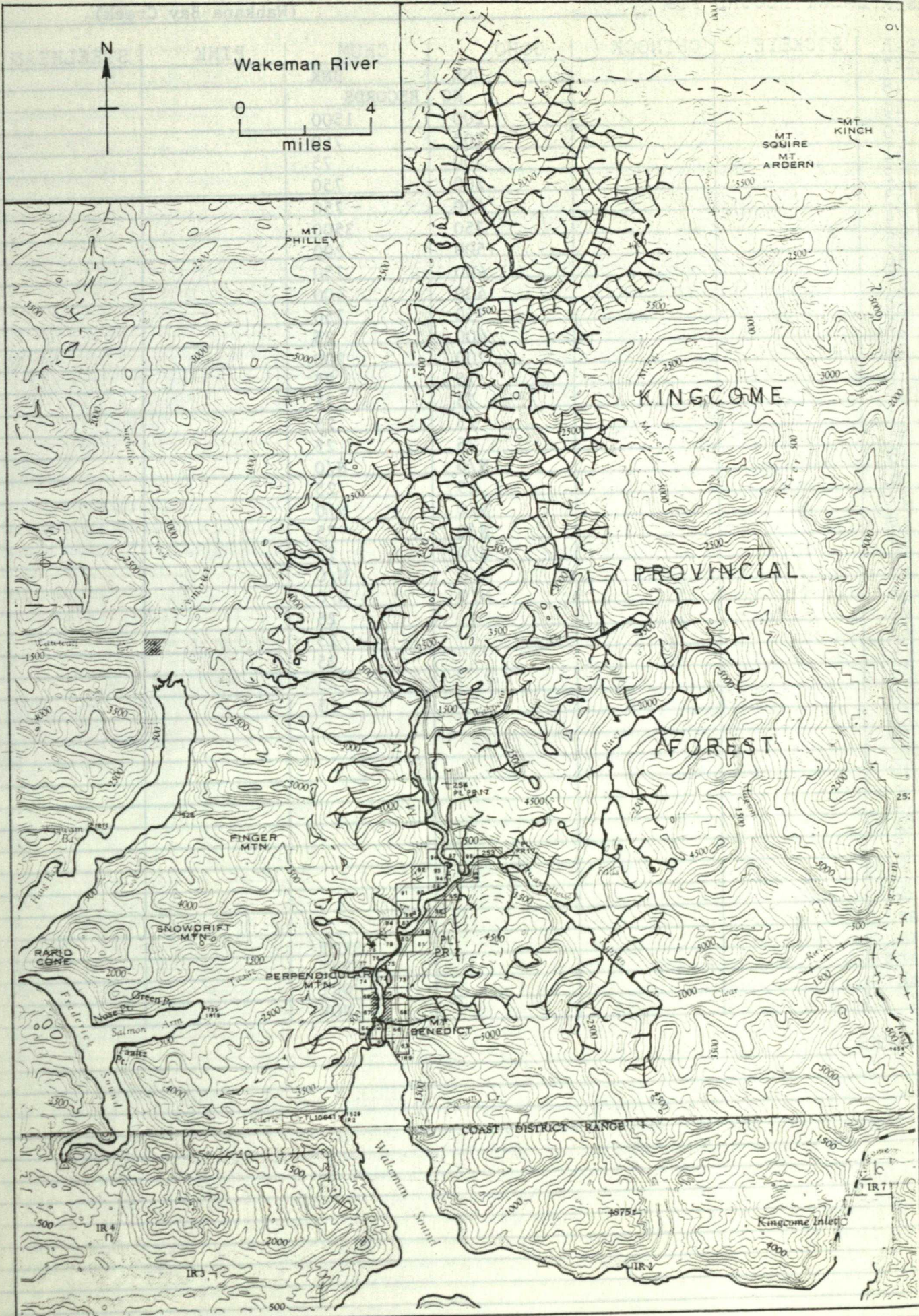
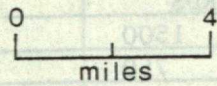
POTENTIAL OF INACCESSIBLE PORTION OF STREAM

GENERAL REMARKS:

- This creek has very little water which is slow moving and discoloured. The spawning area is quite limited. (1970)



Wakeman River



MT PHILLEY

MT SQUIRE
MT ARDERN

MT KINCH

KINGCOME

PROVINCIAL

AFOREST

FINGER MTN

SNOWDRIFT MTN

RABBIT CREEK

PERPENDICULAR MTN

MT BENEICT

COAST DISTRICT RANGE

IR 4

IR 3

IR 3

IR 7

Kingcome Inlet

NAME OF STREAM WAKEMAN RIVER

CONSERVATION DISTRICT 5 STATISTICAL AREA 12

LOCATION OF MOUTH Flows S. into Wakeman Sd., Rge. 2, Coast Dist.

POSITION 51 126 SW.

LENGTH _____ MI. WIDTH _____ FT. DRAINAGE _____ SQ. MI.

COMPOSITION: BEDROCK _____ BOULDER _____ COARSE _____ FINE _____

SILT & SAND _____ UNCLASSIFIED _____

GRADIENT:

FALL IN FT/000

0.0 - 2.5	
2.5 - 5.0	
5.0 - 7.5	
7.5 - 10.0	
> 10.0	

WETTED AREA _____ SQ. YD. SPAWNING AREA _____ SQ. YD.

DISCHARGE _____ CFS MAX _____ MIN _____

TEMPERATURE _____

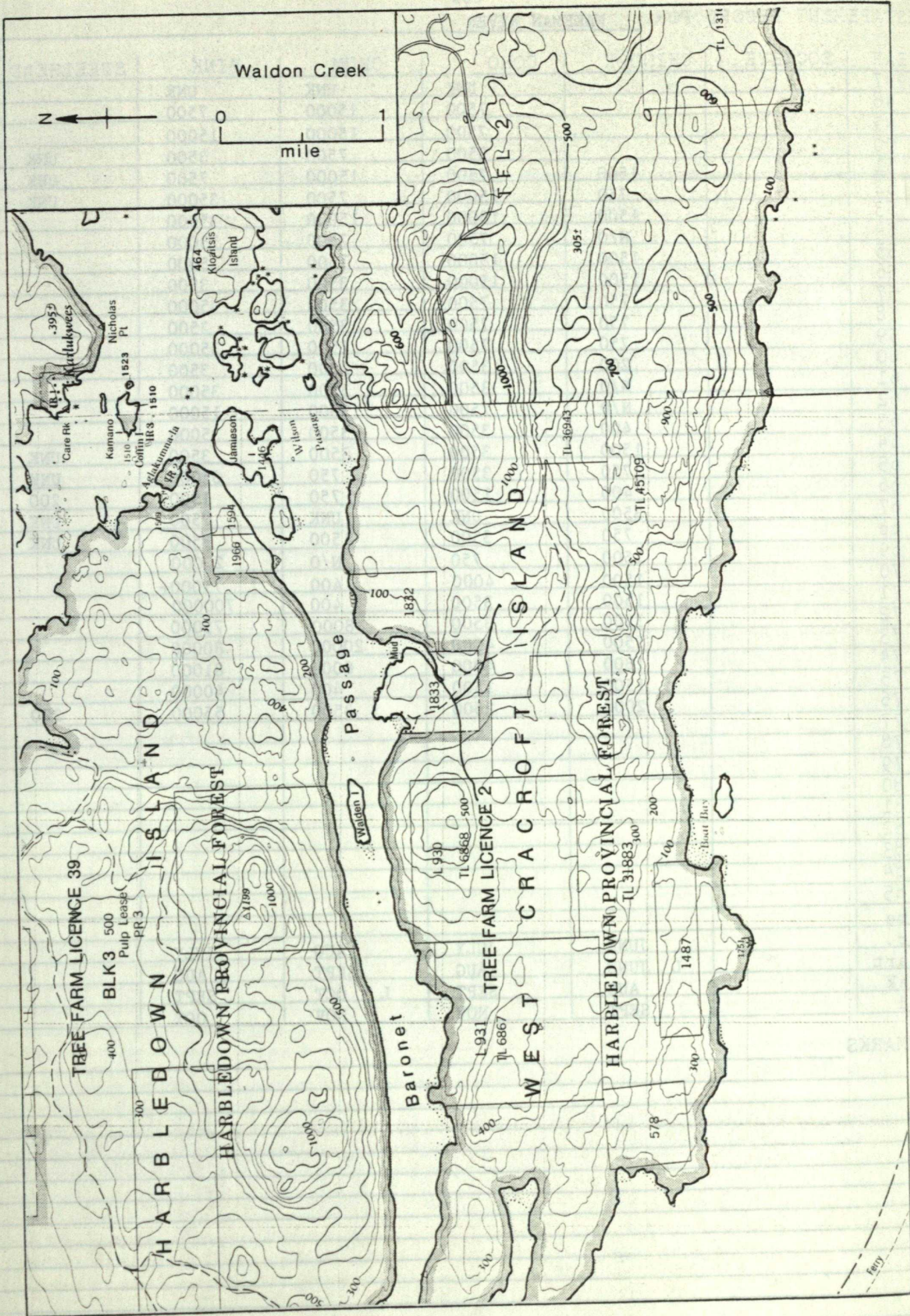
BARRIERS OR POINTS OF DIFFICULT ASCENT _____

SPAWNING DISTRIBUTION:

SPECIES	SECTION OF STREAM USED
SOCKEYE	
CHINOOK	throughout
COHO	throughout
CHUM	to Atway and Wahpeeto Cr. tributaries
PINK (ODD YR)	to Atway and Wahpeeto Cr. tributaries
PINK (EVEN YR)	to Atway and Wahpeeto Cr. tributaries
STEELHEAD	

POTENTIAL OF INACCESSIBLE PORTION OF STREAM _____

GENERAL REMARKS: _____



NAME OF STREAM (Not Gazetted) (Waldon Creek)

CONSERVATION DISTRICT 5 STATISTICAL AREA 12

LOCATION OF MOUTH Flows NE. into Baronet Passage, N. side of W. Cracroft I.,

Rge. 1, Coast Dist. POSITION 50 126 NW.

LENGTH 1 MI. WIDTH FT. DRAINAGE SQ. MI.

COMPOSITION: BEDROCK BOULDER COARSE FINE

SILT & SAND UNCLASSIFIED

GRADIENT:

FALL IN FT/000

0.0 - 2.5	
2.5 - 5.0	
5.0 - 7.5	
7.5 - 10.0	
> 10.0	

WETTED AREA SQ. YD. SPAWNING AREA SQ. YD.

DISCHARGE CFS MAX MIN

TEMPERATURE

BARRIERS OR POINTS OF DIFFICULT ASCENT

SPAWNING DISTRIBUTION:

SPECIES	SECTION OF STREAM USED
SOCKEYE	
CHINOOK	
COHO	
CHUM	
PINK (ODD YR)	
PINK (EVEN YR)	
STEELHEAD	

POTENTIAL OF INACCESSIBLE PORTION OF STREAM

GENERAL REMARKS:

METRIC EQUIVALENTS

<u>Length</u>			<u>Area</u>		
cm.	=	.3937 in.	sq. cm.	=	.1550 sq. in.
meter	=	3.28 ft.	sq. m.	=	10.76 sq. ft.
meter	=	1.094 yd.	sq. m.	=	1.196 sq. yd.
kilometer	=	.621 mi.	sq. km.	=	.386 sq. mi.
inch	=	2.54 cm.	sq. in.	=	6.45 sq. cm.
foot	=	.3048 m.	sq. ft.	=	.0929 sq. m.
yard	=	.9144 m.	sq. yd.	=	.836 sq. m.
mile	=	1.61 km.	sq. mi.	=	2.59 sq. km.
			acre	=	.405 ha.
			hectare	=	2.47 acres
			acre	=	43560 sq. ft.

<u>Volume</u>			<u>Capacity</u>		
cu. cm.	=	.061 cu. in.	liter	=	.0353 cu. ft.
cu. m.	=	35.315 cu. ft.	liter	=	.21998 gal. (Br.)
cu. m.	=	1.308 cu. yd.	liter	=	61.023 cu. in.
cu. in.	=	16.38 cu. cm.	cu. in.	=	.0164 l.
cu. ft.	=	.028 cu. m.	cu. ft.	=	28.32 l.
cu. yd.	=	.7645 cu. m.	gallon	=	4.5459 l. (Br.)

Weight

gram	=	15.432 grs.	ounce	=	28.35 g.
gram	=	.0353 oz.	pound	=	.454 kg.
kilogram	=	2.2046 lbs.	ton (sht)	=	907.18 kg.
kilogram	=	.0011 ton (sht)	ton (sht)	=	.907 met. ton
met. ton	=	1.1025 ton (sht)	ton (sht)	=	2000 lbs.
grain	=	.0648 g.			

Degrees Centigrade = $5/9$ (Degrees Fahr. - 32)
 Degrees Fahrenheit = $9/5$ (Degrees Cent.) + 32

WATER QUANTITIES AND FLOW MEASUREMENT

1 cubic foot per second (cfs) or second foot	=	373.2 gallons per min. (gpm)
1 cubic foot per second (cfs) or second foot	=	.537408 million gallons
1 second foot	=	approx. 2 acre-feet per day
1 second foot	=	86400 cubic feet per day
1 million gallons per day	=	1.86 cfs
1 acre-foot	=	43560 cubic feet or 271379 gal.
1 cubic foot of water	=	6.23 gal. and weighs 62.4 lbs.
1 cubic meter per second	=	35.31 cubic feet per second (cfs)
1 meter per second	=	3.28 feet per second
1233.5 cubic meters	=	1 acre-foot

