

1892

DFO - Library / MPO - Bibliothèque

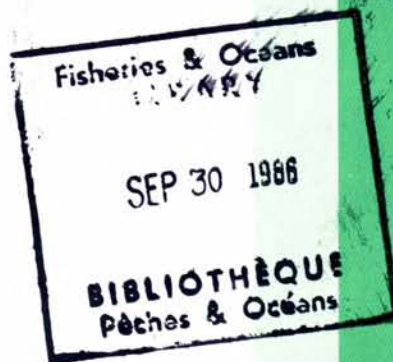


12022050

The Collection and Processing of Commercial Catch/Effort Statistics in the Scotia-Fundy Region During 1967-82

J. McMillan and R.N. O'Boyle

Marine Fish Division
Bedford Institute of Oceanography
Department of Fisheries and Oceans
Dartmouth, Nova Scotia
B2Y 4A2



August 1986

**Canadian Manuscript Report of
Fisheries and Aquatic Sciences
No. 1892**

SH
223
F55
1892
C.1



Fisheries
and Oceans

Pêches
et Océans

Canada

Canadian Manuscript Report of Fisheries and Aquatic Sciences

Manuscript reports contain scientific and technical information that contributes to existing knowledge but which deals with national or regional problems. Distribution is restricted to institutions or individuals located in particular regions of Canada. However, no restriction is placed on subject matter, and the series reflects the broad interests and policies of the Department of Fisheries and Oceans, namely, fisheries and aquatic sciences.

Manuscript reports may be cited as full publications. The correct citation appears above the abstract of each report. Each report is abstracted in *Aquatic Sciences and Fisheries Abstracts* and indexed in the Department's annual index to scientific and technical publications.

Numbers 1-900 in this series were issued as Manuscript Reports (Biological Series) of the Biological Board of Canada, and subsequent to 1937 when the name of the Board was changed by Act of Parliament, as Manuscript Reports (Biological Series) of the Fisheries Research Board of Canada. Numbers 901-1425 were issued as Manuscript Reports of the Fisheries Research Board of Canada. Numbers 1426-1550 were issued as Department of Fisheries and the Environment, Fisheries and Marine Service Manuscript Reports. The current series name was changed with report number 1551.

Manuscript reports are produced regionally but are numbered nationally. Requests for individual reports will be filled by the issuing establishment listed on the front cover and title page. Out-of-stock reports will be supplied for a fee by commercial agents.

Rapport manuscrit canadien des sciences halieutiques et aquatiques

Les rapports manuscrits contiennent des renseignements scientifiques et techniques qui constituent une contribution aux connaissances actuelles, mais qui traitent de problèmes nationaux ou régionaux. La distribution en est limitée aux organismes et aux personnes de régions particulières du Canada. Il n'y a aucune restriction quant au sujet; de fait, la série reflète la vaste gamme des intérêts et des politiques du ministère des Pêches et des Océans, c'est-à-dire les sciences halieutiques et aquatiques.

Les rapports manuscrits peuvent être cités comme des publications complètes. Le titre exact paraît au-dessus du résumé de chaque rapport. Les rapports manuscrits sont résumés dans la revue *Résumés des sciences aquatiques et halieutiques*, et ils sont classés dans l'index annuel des publications scientifiques et techniques du Ministère.

Les numéros 1 à 900 de cette série ont été publiés à titre de manuscrits (série biologique) de l'Office de biologie du Canada, et après le changement de la désignation de cet organisme par décret du Parlement, en 1937, ont été classés comme manuscrits (série biologique) de l'Office des recherches sur les pêcheries du Canada. Les numéros 901 à 1425 ont été publiés à titre de rapports manuscrits de l'Office des recherches sur les pêcheries du Canada. Les numéros 1426 à 1550 sont parus à titre de rapports manuscrits du Service des pêches et de la mer, ministère des Pêches et de l'Environnement. Le nom actuel de la série a été établi lors de la parution du numéro 1551.

Les rapports manuscrits sont produits à l'échelon régional, mais numérotés à l'échelon national. Les demandes de rapports seront satisfaites par l'établissement auteur dont le nom figure sur la couverture et la page du titre. Les rapports épuisés seront fournis contre rétribution par des agents commerciaux.

Canadian Manuscript Report of Fisheries and Aquatic Sciences No. 1892

August 1986

**The Collection and Processing of Commercial Catch/Effort Statistics
in the Scotia-Fundy Region During 1967-82**

by

J. McMillan and R.N. O'Boyle

**Fisheries and Oceans
Scotia-Fundy Region
Fisheries Research Branch
Marine Fish Division
Bedford Institute of Oceanography
P.O. Box 1006, Dartmouth
Nova Scotia, B2Y 4A2**

Minister of Supply and Services Canada 1986

Cat. No. Fs 97-4/1892E

ISSN 0706-6473

Correct citation for this publication:

McMillan, J. and R.N. O'Boyle. 1986. The Collection and Processing of Commercial Catch/Effort Statistics in the Scotia-Fundy Region During 1967-82. Can. MS Rep. Fish. Aquat. Sci. No. 1892.

CONTENTS

	<u>Page</u>
Abstract/Résumé	iv
Introduction	1
The Overview	1
Data Collection	2
Data Coding	3
Inshore Fishery.....	3
Offshore Groundfish Fishery.....	3
Pelagic Fishery.....	5
Date Entry	5
Key Punching	5
Initial Data Processing and Addition to Data File.....	5
Data Editing	6
Detailed Data Specifications	6
Data Output	6
Concluding Remarks	6
Acknowledgements	7
References.....	7
Figures	8
Appendix A: Data Collection Forms.....	20
Appendix B: Data Specifications for Commercial Catch/Effort Statistics: Input Catch/Effort Data for Scotia-Fundy Region (1979-82).....	24
Appendix C: Data Specifications for Commercial Catch/Effort Statistics: Detailed Catch/Effort Data for Maritime Region (1967-77).....	36
Appendix D: Data Specifications for Commercial Catch/Effort Statistics: Detailed Catch/Effort Data for Scotia-Fundy Region (1978).....	65
Appendix E: Data Specifications for Commercial Catch/Effort Statistics: Detailed Catch/Effort Data for Scotia-Fundy Region (1979-82).....	101
Appendix F: Data Specifications for Commercial Catch/Effort Statistics: Summary Catch Data for Maritime Region (1967-72).....	137
Appendix G: Data Specifications for Commercial Catch/Effort Statistics: Summary Catch Data for Scotia-Fundy Region (1973-82).....	139
Appendix H: Figures and Tables for Appendices.....	141

ABSTRACT

McMillan, J. and R.N. O'Boyle. 1986. The Collection and Processing of Commercial Catch/Effort Statistics in the Scotia-Fundy Region During 1967-82. Can. MS Rep. Fish. Aquat. Sci. No. 1892.

The collection and compilation of catch/effort data has been undertaken since the 1960s in the the Maritime Region. Early paper and manual systems have over time been largely replaced by more efficient computer based ones. Editing of the generated files is still a large part of recent system developments. All systems, both historical and current, have placed a large number of processing steps between the originator of the data, the fisherman, and the user of the data, normally an economist or biologist. It is thus very important to any analysis of this data that a full understanding of the various data fields on the computer files be obtained. Consequently a comprehensive description of data flow is given for the catch/effort data collected in the Maritimes during 1967-82.

RÉSUMÉ

McMillan, J. and R.N. O'Boyle. 1986. The Collection and Processing of Commercial Catch/Effort Statistics in the Scotia-Fundy Region During 1967-82. Can. MS Rep. Fish. Aquat. Sci. No. 1892.

Dans la région des Maritimes, on recueille et compile des données sur les prises et l'effort de pêche depuis 1960. Les méthodes manuelles et les relevés écrits ont, au fil des ans, été en grande partie remplacés par des moyens informatiques plus efficaces. Cependant, dans le fonctionnement des nouveaux systèmes, la mise en forme des fichiers produits par l'ordinateur continue d'occuper une part importante. Dans tous les systèmes, anciens et nouveaux, un grand nombre d'étapes de traitement interviennent entre la source des données, le pêcheur et l'utilisateur, normalement un économiste ou un biologiste. Il est donc essentiel de bien comprendre les catégories de données contenues dans les fichiers d'ordinateur pour pouvoir les analyser. À cette fin, nous décrivons ici de façon exhaustive le flux des données sur les prises et l'effort de pêche recueillies dans les Maritimes de 1967 à 1982.

Introduction

The effective management of renewable resources, such as fish populations, requires a large set of information which can be used to plan exploitation strategies. The most basic data requirements are the yield harvested and the corresponding effort expended to obtain it. This information allows the derivation of various parameters of resource dynamics (Ricker, 1975) which are then input for the resource management process.

Fisheries statistics on catch and effort have been collected in various forms on Canada's east coast since the turn of the century. In 1967, computers were introduced into the process for the first time. The data processing has remained virtually constant since then, with minor changes in data flow to accommodate technological advance.

The purpose of the present report is to document the data gathering and processing system in the Scotia-Fundy Region since 1967. Emphasis will be placed on the processing of information collected in the harvesting of groundfish (i.e. cod, haddock, pollock, etc.) and pelagic (herring, mackerel, etc.) species. Field and office processing procedures will be discussed. In essence, the data flow from the fishermen to a computer file will be documented. In this way, an appreciation for the strengths and weaknesses of the data will be obtained. This will allow the wise use of the collected data sets in the derivation of information for input into management models.

The Overview

There are currently about 13,600 vessels in the 20-65 ft range, 75 vessels in the 65-100 ft range, and 150 vessels over 100 ft, operating off Canada's east coast (Kirby, 1982). In 1981 these vessels landed in the order of 750,000 t from approximately 500,000 fishing trips. Each of these generates paperwork which must be processed on a fairly realtime basis. This processing is presently handled separately by each management region on the Atlantic Coast (Figure 1). The processing for the Scotia-Fundy Region is handled by the Statistics Division of the Management Services Branch. The data flow through this group, which is discussed in this document, is typical of that used in the other regions.

Three main phases are involved in the processing of catch/effort statistics. These are, in sequence:

1. Data Collection
2. Data Coding
3. Data Entry

An overview of what happens to data in each phase is provided in Figures 2a-2c. Subsequent to data entry, output is generated according to user demands.

When a vessel lands its catch at the dock, the buyer fills out a purchase slip detailing how much fish was landed, when it was landed, where it was landed and other pertinent information. Since the catch has to be accurately weighed to determine cost of sale, the landings on the purchase slip are taken

as those representative of the yield from the fishery. The buyer keeps the accumulated purchase slips in his office until the local Fisheries or Statistical Officer picks them up. This occurs about once a week.

Offshore vessels, those defined as being greater than 25.5 gross tons or 45.5 ft LOA, are required to carry a log which is filled out daily on each fishing trip, giving details of the location, time of day and the amount of catch. It is this information that provides estimates of fishing effort. These logs are kept by the vessel captain until picked up by either a Fisheries or Statistical Officer. As with the purchase slips, this occurs about once a week.

In the District DFO (Department of Fisheries and Oceans) Office, the Statistical Officer or Coordinator sorts all the purchase slips into those for inshore and offshore vessels. As well, for offshore vessels, he matches the purchase slip for a particular trip with its appropriate log record. Some visual editing is conducted and subsequently all pieces of paper are sent to the Regional Statistical Office in Halifax. This completes the data collection phase.

Once the purchase slips and logs reach Halifax, the inshore and offshore information is split and undergoes separate processing routes. In the case of inshore data, the information on the purchase slip is supplemented with computer codes which describe such things as place of landing, gear used, month landed, condition of catch, etc. Once this is completed, the slips go to the keypunchers for entry into a computer file.

In the case of the offshore groundfish data, the process involves calculating and coding effort for each unit area (subunits of each NATO Division) fished in addition to the coding of purchase slip information. The logs for the offshore vessel trips indicate, among other things, the various unit areas fished during the trip. With respect to terminology, a "pure trip" is one in which only one unit area was fished. A "split trip" is defined as one in which more than one unit area was fished during the voyage. Whether a trip is "pure" or "split" dictates what processing it undergoes. In the case of the former, effort information is derived from the log and transcribed onto the back of the purchase slip. The slip then undergoes minor coding and is sent to keypunching for data entry.

In the case of a split trip, catch and effort statistics are derived from the purchase slip and log information on a unit area by unit area basis. All information is coded on a transfer sheet which is subsequently sent to keypunching.

Once the data is computerized it undergoes an editing process. This will not be extensively discussed in this document. It is important to state however that editing as a step in the process was not introduced into the system until 1980. Consequently the data available for the 1967-79 period must be considered unedited. Experience with these data has shown that there are a number of existing technical problems. Some attempt to identify the most prominent of these is provided in the appendices on data specifications. The data is useable but must be done so fully aware of potential errors.

The following sections outline the details of each phase of data processing.

Data Collection

Upon completion of a fishing trip a vessel's catch is sold and a purchase slip or receipt of sale is completed by the buyer. This itemizes the vessel's landings by species and records the necessary statistical information (i.e. port of landing, gear type, and date landed). Ideally every week the local Fisheries or Statistical Officer will collect the available purchase slips from the buyer.

The format of a purchase slip can vary from one buyer to the next, but they all must contain the information required by DFO. The Department of Fisheries and Oceans publishes its own version (Appendix H, Figure H.1) and is available to all buyers.

Section 25 of the Atlantic Fisheries Regulations require that all fishing vessels greater than 25.5 gross tons or 45 ft LOA are required to produce of log record at the end of each trip. Each log notes details of, among other statistics, the daily effort expended, time of day, fishing location, gear type, and an estimate of the weight caught for each species. The local Fisheries or Statistical Officer collects a copy of the logs directly from the skipper of each vessel also on a weekly basis.

The Department of Fisheries and Oceans publishes log record books for the use of all fishermen. A different version exists for each type of harvesting (groundfish, pelagic, scallops). Examples of ones presently in use in the Scotia-Fundy Region are given in Appendix H, Figures H.5 and H.6.

Once the paper work is collected, it is the job of the District Statistical Officer to prepare the information for further processing in Halifax. This includes the following duties:

- 1) The sorting of all purchase slips and log records into inshore and offshore groups.
- 2) The matching of all offshore logs with the appropriate purchase slip. If a log cannot be found for a purchase slip, the latter is forwarded to Halifax regardless and matching, if possible, occurs there.
- 3) The conversion of all fishing location data on log records from Loran C or Decca recordings to statistical unit areas.
- 4) Additional minor editing of the paperwork that may be required.

It is instructive to provide an example of what the Statistical Officer does.

Figures 3 and 4 are examples of purchase slips filled out for an inshore and offshore vessel landing respectively. Associated with the latter can be one of either Figures 5 or 6, the log records. Figure 5 is an example of a log record filled out when the vessel fishes in the same unit area for the entire trip, in this case 4Xo. This is

referred to as a "pure" trip. Figure 6 is an example of a log record filled out when the vessel fishes in more than one unit area while on the same fishing trip, in this case 4Xo and 4Xn. This is referred to as a "split" trip.

In the case of the inshore purchase slip (Figure 3), the Statistical Officer here simply checks all fields to see if they are correctly filled in, adds "4W" to the ICNAF/NAFO Division field and "lbs" to the unit of measure field if these are not already present. These corrections would be made in light of information he has about that particular fisherman and sale (i.e. general knowledge of the district).

In the case of the offshore vessel purchase slip (Figure 4), the Statistical Officer checks all fields and adds the gear type "stern greater than 70 ft." to the gear used field and "lbs" to the unit of measure field. Again these corrections depend on his knowledge of the fishery.

In the case of the log records (Figures 5 and 6), which are matched to the purchase slips on a trip by trip basis, the Statistical Officer again checks all fields and adds the net type "Western No. 2" to the type of gear field and, calculates the unit areas fished per day from the Decca readings and adds these (4Xo and 4Xn) to the position field.

When all the available documentation has been collected, edited and offshore purchase slips and logs matched, the inshore and offshore data are bundled separately and sent the Regional Statistics Office in to Halifax. This occurs once a week.

Occasionally a purchase slip is not located for a particular landing. Consequently the local Fisheries or Statistical Officer is responsible for the completion of a "supplementary purchase slip - A" (Appendix A.2). This form is to be used for recording purchases of fish from fishermen by processors, commission agents, assemblers and peddlers (door to door vendors) when regular purchase slips are not obtainable. The recorded information is available to the officer from 1) the purchaser, 2) his knowledge of the activities during the week; and 3) the offshore vessel logs themselves for which the slip is being prepared. All the information recorded on the regular purchase slip is indicated on the supplementary purchase slip - A. Once completed, this form is treated exactly as a regular purchase slip. It is matched with the appropriate log, (for an offshore landing), bundled with the others (inshore or offshore) and sent to the Halifax Statistics Office.

With each bundle of documentation sent weekly to Halifax, there is a purchase slip guide (Appendix A.4) which is filled out by the Statistical Officer to: 1) report omissions on the purchase slips being sent, and 2) explain local terminology and classify unusual and ambiguous entries. One purchase slip guide is required for each buyer in the district.

In addition to the above, the Statistical Officer compiles, on a weekly basis, a list of all landings by management unit for each stock for submission to the Halifax Quota Management Office.

Not all landings data are captured by the regular purchase slip system. Four main categories of non-reported landings occur from:

- 1) fish processed by fishermen (i.e. salted cod, pickled herring, etc.);
- 2) fresh fish sales;
- 3) fresh fish used as bait by fishermen; and
- 4) other landings (including fish consumed by fishermen and their families).

It is the job of the Statistical Coordinator to compile data on these landings, using available information sources, on a monthly basis. The supplementary purchase slip B form (Appendix A.3) is used for this purpose. Once completed, it is handled like a regular purchase slip. It is worthwhile to note that most supplementary B slips are for inshore landings.

It is not possible at this time to estimate the accuracy of the recorded landings on either of the supplementary purchase slips. In addition, it is not possible for the user to determine which type of purchase slip a particular computer record was derived. There is one exception, the fish landings processed by fishermen and recorded on a supplementary purchase slip - B are coded in the computer with a different condition and are therefore identifiable.

Data Coding

Once in Halifax, the documents from the various districts are handled differently depending on whether they are from an inshore, offshore groundfish or pelagic fishery.

Inshore Fishery

In the Halifax Statistics Office, the inshore vessel purchase slips are regrouped into bundles by: 1) place fish were landed (includes provinces, statistical district and port of landing), 2) month landed, and 3) gear used. This common information is coded on the top slip of each bundle.

Thus, in our example, (Figure 7), the place landed, Halifax, becomes 12101 (see fields 7, 8, 9 of Appendix E). The first digit, "1", represents Nova Scotia, the next two digits "21" represent the statistical district of the port of landing, while the last two digits "01", represent the port of Halifax within that statistical district. Note that the port designations in each statistical district commence at "01". Thus both the statistical district and the port designations are needed to uniquely define a port. Next the date landed is coded '07' for the month of July. Only the month is coded but the entire date '071081' is keyed into the computer. Finally the gear used, gillnet-set, "06" is coded (see field 11, Appendix E). All allowable codes are referred to more fully in the section on data entry.

All the information unique to each slip within the bundle, is coded on that particular slip. The species code, market category code (size) and condition landed code (gutted or round, etc.) are all assigned to each item on the purchase slip (fields 20, 21, and 22 of Appendix E).

The example (Figure 7) has 10092 for steak cod. The fourth digit is the market category and should by definition be a '3'. Thus for item one, steak cod, the combined code is 10032, the first three digits, 100, represent cod, the next one, 3, for steak size and the last one, 2, for a condition of "dressed head-on". Presently however, most fish are no longer placed in market categories and thus all, except halibut and lobster, are given a code of "9" (unsized).

Finally, the correct price to be keyed into the computer is indicated by the coder. If the price per pound is to be keyed, an 'X' is placed in front of the price. If the total amount paid is to be keyed, it is circled. Therefore all purchase slips will have an 'X' or the amount paid (circled) for each item on the slip (Figure 7). Regardless of the price coded, it always appears as value in dollars for the total weight indicated when seen by the data user.

For inshore records, neither the record type nor the item number are coded or keyed. The data entry program automatically fills in the record type with an 'I'. It also assigns the appropriate number, in numerical order of data entry, for each item on the slip. The item number begins at '1' for each new slip. Also, at the present time, there is no vessel identification of any kind, except for the lobster fishery, nor is there any indication of effort for the entire inshore fleet.

Once each bundle of inshore purchase slips has been processed it is grouped together with other bundles processed by the same person to create a "super-bundle". This super-bundle is then coded with a five digit batch number which identifies the person who carried out the coding. Once this is completed, the batches are sent to keypunching for entry into computer files for mass storage.

Offshore Groundfish Fishery

In contrast to the inshore purchase slips the offshore purchase slips are not sorted into similar bundles. Each slip is processed individually by a separate group in the Statistics Office.

There are eight items coded on an offshore purchase slip:

- 1) Place fish landed (includes province, statistical district and port of landing)
- 2) Month landed
- 3) Gear
- 4) Species Code (includes species, market category, and condition)
- 5) Price
- 6) Offshore Vessel Code
- 7) Record Type
- 8) Item Number

Items 1-5 are coded as per the inshore purchase slips and items 6-8 are unique to offshore purchase slips. An example of the coded version of Figure 4 is presented in Figure 8.

The calculation of the effort data requires the combination of the information on the purchase slips and log record.

Effort must be calculated and coded for each unit area fished; hence the development of two effort categories - pure trips and split trips.

In the case of a pure trip all the effort coding is placed on the reverse side of the appropriate purchase slip according to the format illustrated in Figure 9. The applicable effort categories are:

1. Gear Code
2. Unit Area
3. Main Species
4. Depth
5. Class of Document
6. Tenth of Trips
7. Days at Sea
8. Days Fished
9. Hrs/Lines Fished

Figure 5 shows the log record that was used in conjunction with the purchase slip in Figure 8 to generate the effort data provided in Figure 9.

The 'gear code' field (see field 11, Appendix E) contains both the gear code, 22, off the front of the purchase slip, and the net code, 15, for western No. 2, which is obtained from the log record. Unfortunately the net codes are extremely unreliable and should not be used. The net code field has in fact been dropped from the data specification given in the appendices.

The unit area is 4Xo as obtained from the log.

The main species code represents the species for which the largest quantity was captured for that trip in the designated unit area. In this case it is cod (code 100) (see field 10, Appendix E).

The depth code represents the range in which the average fishing depth (in fathoms) for that trip falls. Here it is "3" for 61-90 fathoms (see field 2, Appendix E).

The class of document code refers to the completeness of the effort data. When all effort data is available i.e. tenths of trips, days at sea, days fished and hrs/lines fished, the code is "1" as it is here (see field 14, Appendix E). If no log was available, the code would have been "9" for no effort.

The tenths of trips represent the proportion of hours or lines times 10 spent fishing in the designated unit area. In this case it is $1 \times 10 = 10$.

The days at sea is simply the port to port time (i.e. 4/6/81 - 12/5/81) including steaming which totals to 9.0 days here.

The days fished are the days at sea minus the number of days spent steaming - here 7.

The hrs/lines fished is simply the rounded summation of the hours fished, as given in the log, here being 116 hours.

Once all these calculations have been completed, the forms are batched and passed on for keypunching.

The record type and the update code fields are both features that have been created for the computer processing and will be discussed in a later section. At present all offshore groundfish slips with or without effort are coded as record type "C" and the update code is left blank (see Fields 2 and 3, Appendix B). The front of a pure trip purchase slip is coded with the record type.

The process is quite different for a split trip. The entire fishing trip is broken down by unit area and the information recorded on transfer sheets. Figure 10 presents the transfer sheet that was generated by combining information from the purchase slip in Figure 8 and the log record in Figure 6.

The top of the transfer sheet contains information common to every unit area fished this information comes directly off the purchase slip.

Each side on the front of the transfer sheet is used for one unit area. In the example, the fishing was, according to the log, carried out in unit area 4Xn and 4Xo. If more unit areas were involved, more transfer sheets would have been utilized.

The tenths of trips are calculated from the percentage of fishing time in hrs/line spent in each unit area. Thus, in the example, 19.25 out of 104.75 hours were spent in unit area 4Xn. This is 0.18 or two tenths of the trip. The rest, 8/10, was spent in 4Xo.

Two of the nine days at sea were spent in 4Xn and 7 were spent in 4Xo. The balance of the time at sea (2 days) was spent steaming in 4Xn.

For distribution of catches between the two unit areas, the proportion in which each species was caught, calculated from the log record, is applied to the catch reported on the purchase slip. Then, for cod, a total of 2300 lbs. were landed, according to the purchase slip. According to the log, 33% (1000/3000) of this was caught in 4Xn. Therefore 759 lbs. of cod are recorded on the transfer sheet as being from 4Xn while the balance of the 2300 lbs. (1541 lbs.) is designated as being from 4Xo. This calculation is carried out for all species landed.

If a species is listed on the purchase slip and not indicated on the log record it is allocated to the unit area thought most appropriate by the Field Officer. This decision is based on experience in the fisheries alone. The accuracy is therefore a function of years experience in the fishery.

Next, the price per lb. information is added to the transfer sheet. For cod, the total sale value, \$192.00 + \$459.00 = \$651.00 is divided by 2300 to give an average price per lb. of \$0.28 which is filled in for both unit areas. The other prices are simply transferred from the front of the purchase slip.

Finally, the items on the transfer sheet are numbered consecutively for all unit areas fished in the one trip.

Once all these calculations have been completed, the coded forms are passed on for keypunching.

Pelagic Fishery

The offshore purchase slips for the pelagic fleet are processed by the same group that process the inshore purchase slips because effort is not calculated for this fleet. There is, however, some additional information coded for these slips which is not included on inshore slips; vessel identification (offshore vessel code), main species, unit area of capture, record type, and item number.

Regarding unit area prior to 1980, some unit area designations are available for pelagic landings. These have been generated by the Fisheries Officers (who place the unit area on the purchase slip in the NAFU division box) after conversations with Halifax personnel and after taking into consideration the overall trends in reportings during the time when those particular purchase slips are being collected. Fisheries Officers generally have a good idea as to where the vessels are working.

The original of the log record is normally retained by the fisherman and the carbon copy is retained by Statistics. The statistics group has never used these logs to generate effort statistics as it has for the offshore groundfish fleet. This is due mainly to the fact that generation of effort statistics for the pelagic fleet is a complex process which requires close examination of all available data. Any unit area designation obtained by the user for the offshore pelagic fleet should be used with extreme caution since log records were not used to derive it.

The pelagic offshore records resemble groundfish offshore records, but with no effort data. Therefore the class of document field ('9' for no effort) is utilized to avoid computer rejection.

Data Entry

Key Punching

Upon reaching the computer entry stage all the coded forms are grouped in order to priority for keypunching. The priority of input in order of highest to lowest is:

1. Offshore Data
2. Supplementary purchase slip data
3. Lobster data
4. Salmon data
5. Weir data
6. All other inshore data

The next step of the entry process involves the actual keypunching in an exact format into computer files. All the data entry is executed on terminals with a standard format screen display. The keypuncher will start in field one and move through the coded form until reaching the last field in the input format.

The data specifications for the input format used in 1979-82 is given in Appendix B.

Data entry is slightly different between inshore and offshore catches. All the common information in a bundle of inshore slips (i.e. place

landed, month landed and gear used) is entered then left to duplicate throughout the balance of the group whereas all the equivalent information on each offshore purchase slip and/or transfer sheet is entered separately. Each species item on a purchase slip is entered separately and represents an individual record for both inshore and offshore (pure trip) purchase slips. It should be noted that some species are still categorized as to market size (steak or market, etc.) on the purchase slip (Figure 8, cod) by the purchaser and that one species can appear more than once on a purchase slip.

The implications at data entry are serious. Each market category is assigned the total effort for the trip. Consequently duplication in effort can arise. The different market categories are entered individually because they each have a unique price per pound. This problem does not develop with split trips because all the market categories of a species are lumped together on the transfer sheet and an average price per pound derived. The best way to discern if the records are from different trips is to utilize the day landed and purchase slip number fields.

The record type (field 2, Appendix B) is a new field in the 1979-82 format. Complete implementation of this field has yet to occur. The four possible values and working theory for each one is described below:

1. I - inshore landings with no effort
2. O - offshore landings with no effort
3. C - offshore landings with effort calculated for first input
4. R - replacement for offshore landings that initially had no effort

A record of type "R" will replace or bump the respective "O" record from the file. If the record is entered with the wrong record type, it will not pass the edit even though all the other fields may be coded correctly. Depending on the record type certain fields may not be applicable and hence can be skipped and in turn will automatically be zero filled. For example, records of type "I" or "O" have no effort, therefore all associated fields must be zeroed in or these records will be bumped during the edit. Similarly, fields that have the information identical to that on the previous record can be automatically filled with that same information. These are both new time saving functions and are only two examples of the many that exist.

Presently, since offshore slips with no effort are coded with record type 'C' they are also coded as class 9 indicating that no effort exists and consequently the record will not be bumped from the system. When the effort arrives the original record is deleted manually and the new record with effort is added.

Initial Data Processing and Addition to the Data File

The input format (Appendix B) is different from that of the output format (Appendices C, D, and E - the format in which the user receives the statistics). Many items in the format are the same but have been re-arranged while others have been created as products of two or more input items and conversion factors. For example, the weight of

landing (Field 25, Appendix B) is the only field associated with the actual weight of the catch on the input file but is presented in the output file in three additional modified forms. These are common landed weight, value and weight in kilograms. They are itemized in Fields 24, 25, and 26 of Appendix E respectively.

With the introduction of the metric system in Canada, statistics relating to fish landings by species, are now reported in kilograms round while previous to 1976, the data were reported in pounds common landed form. As a result the weight in pounds had to be converted to kilograms. Conversion tables (Table H.10) were developed and implemented in computer programs to do just that. Commercial landings tapes previously containing no weight in kilograms (1967-1977) were retrieved and the appropriate field (field 25, Appendix C) filled with the converted weight value for all applicable records.

Presently, as described above, the landed weight in pounds is all that need be available for input on the record. The respective conversions are all performed by the computer. The input weight in pounds (Field 25, Appendix B) is converted to round weight by referring to the condition of landing (Field 30, Appendix B). This condition is then compared (in the computer program) with the most common condition of capture for the species (Table H.9) and if it is different the appropriate conversion factor is retrieved and applied to the initial landed weight.

Value (Field 25, Appendix E) is simply the product of weight of landing (Field 25, Appendix B) and price per pound (Field 33, Appendix B). It should be noted that the "value" is for the species at landing, regardless of the most common condition of capture. It should also be noted that there is a considerable difference in the average price per pound received by the fishermen for the various species depending on whether the price is calculated from data reported in round or common landed form weights. Consequently, condition of landing must be considered when calculating price per pound received.

On occasion the extended value (i.e. total value) is keypunched, but only on rare occasions when the price per pound is not available. The under 51 flag (Field 32, Appendix B) is keypunched "u" if the price per pound is under 51 cents or left blank for all other input records. Occasionally an error in price of a species is reported after the original has already been entered. It is then necessary to change the original price per pound. This is accomplished with the aid of the mark up flag (Field 26, Appendix B). When the field contains an "M", the program will add the newly entered difference in price to the price per pound entered previously for that species.

Weight in kilograms (Field 26, Appendix E) is the round landed weight of the species. The most common condition of capture is first checked then multiplied by the appropriate factor (Table H.10) to take it to round, then divided to convert to kilograms.

In the inshore example of Figure 7 the cod (code - 10092) is landed dressed head on, as

indicated by the fifth digit in the code - "2". This is the most common condition of landing. Consequently no conversion to common landed form is necessary from the 100 lbs. entered. To obtain the round weight in kilograms the cod dressed head on weight is multiplied by 0.5443 (Table H.10) which gives 54.4 kilograms. This is rounded to 54 kilograms.

Upon completion of all the modifications and conversions to create additional items in the output format, the information is added to a file.

Data Editing

As was stated earlier, a comprehensive editing process was not implemented for the catch/effort data until 1980. A number of pilot programs and system designs are currently available but due to their complexity and preliminary nature are not suitable for description here. The main point to note is that analysis of pre-1980 data must be conducted with caution as errors are likely to be encountered. The size and frequency of these are impossible to determine at this time.

Detailed Data Specifications

Processing of the input format, described in Appendix B, generates the detailed data format described in Appendix E. The latter is currently that which provides all detailed catch/effort information for the Scotia-Fundy Region. The format of the detailed catch/effort data has in fact been slightly modified over time. Appendix C describes the format used during 1967-77 while Appendix D describes that for 1978. Although field position changes have been relatively minor, major changes in field content have occurred. Thus analysis of these data requires careful consideration of these data specifications.

Data Output

Besides the data being available in the format as given in Appendices C, D, and E, summary catch data are currently available in the format described in Appendix G. An earlier version of this is given in Appendix F. These data differ from the detailed data in that no effort data is included in the file.

In addition a number of hard copy tabular printouts in various formats are available from Statistics Division, Halifax.

Concluding Remarks

This document outlines the flow of catch/effort data from the fishermen to the computer during the 1967-82 period. Much of the information was gained through an examination of the 1982 process and inferring similarities to this in previous years. Although historical data flow may have been quite different from that described here, this is probably not the case when one considers the similarities among the three available detailed data specifications. It is hoped that this document will fill a sizeable information gap and facilitate the wise and correct use of the catch/effort data. It was the primary objective of this document to link the data fields on a computer file with the

handwriting of a fisherman on a piece of paper.
This has been largely achieved.

Acknowledgements

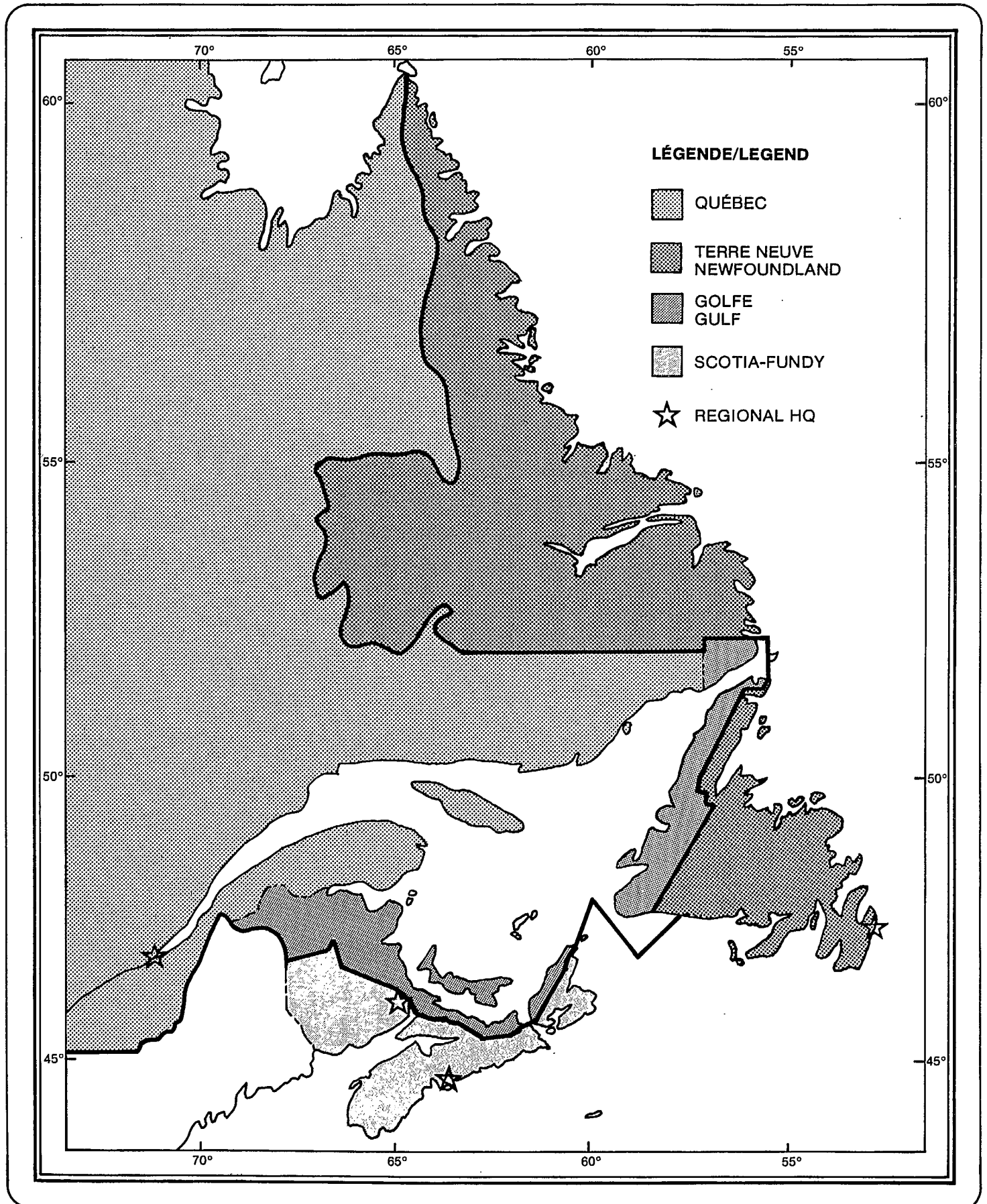
We would like to thank the many members of the Fisheries Statistics and Computer Services Divisions for providing information on both existing procedures and the historical developments. This includes Leo Brander, Gary Collins, Don Digou, Theresa Driscoll, Sandra Gallagher*, Paula Grant, Judy Kane, Bill MacPherson, Ev McLaughlin and Byron Snair -- all of whom provided their very patient assistance. We would also like to thank Peggy McCalla of the Marine Fish Division for her drafting contributions throughout this document, and Derek Wallace for proofreading the manuscript.

References

- Kirby, M.J.L. 1982. Navigating troubled waters. A new policy for the Atlantic fisheries. Report of the task force on Atlantic fisheries. 379 p.
- Ricker, W.E. 1975. Computation and interpretation of biological statistics of fisheries populations. Bull. Fish. Res. Board Can. 191. 382 p.

*Now with the Invertebrates and Marine Plants Division.

Figure 1. Fisheries Management Regions for the Atlantic Coast.



FLOW CHART OF FISHERIES DATA

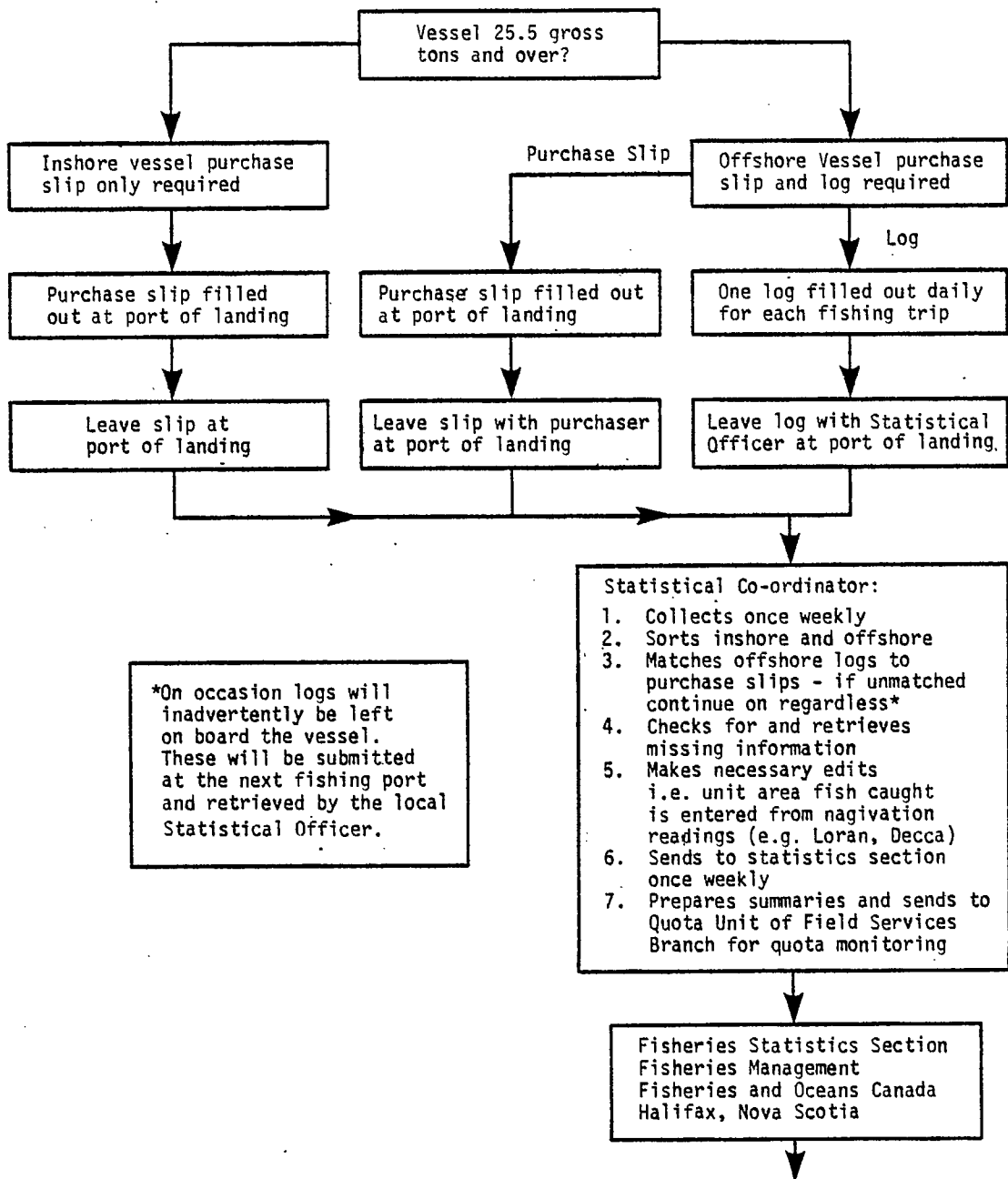


Figure 2a. Data collection procedures.

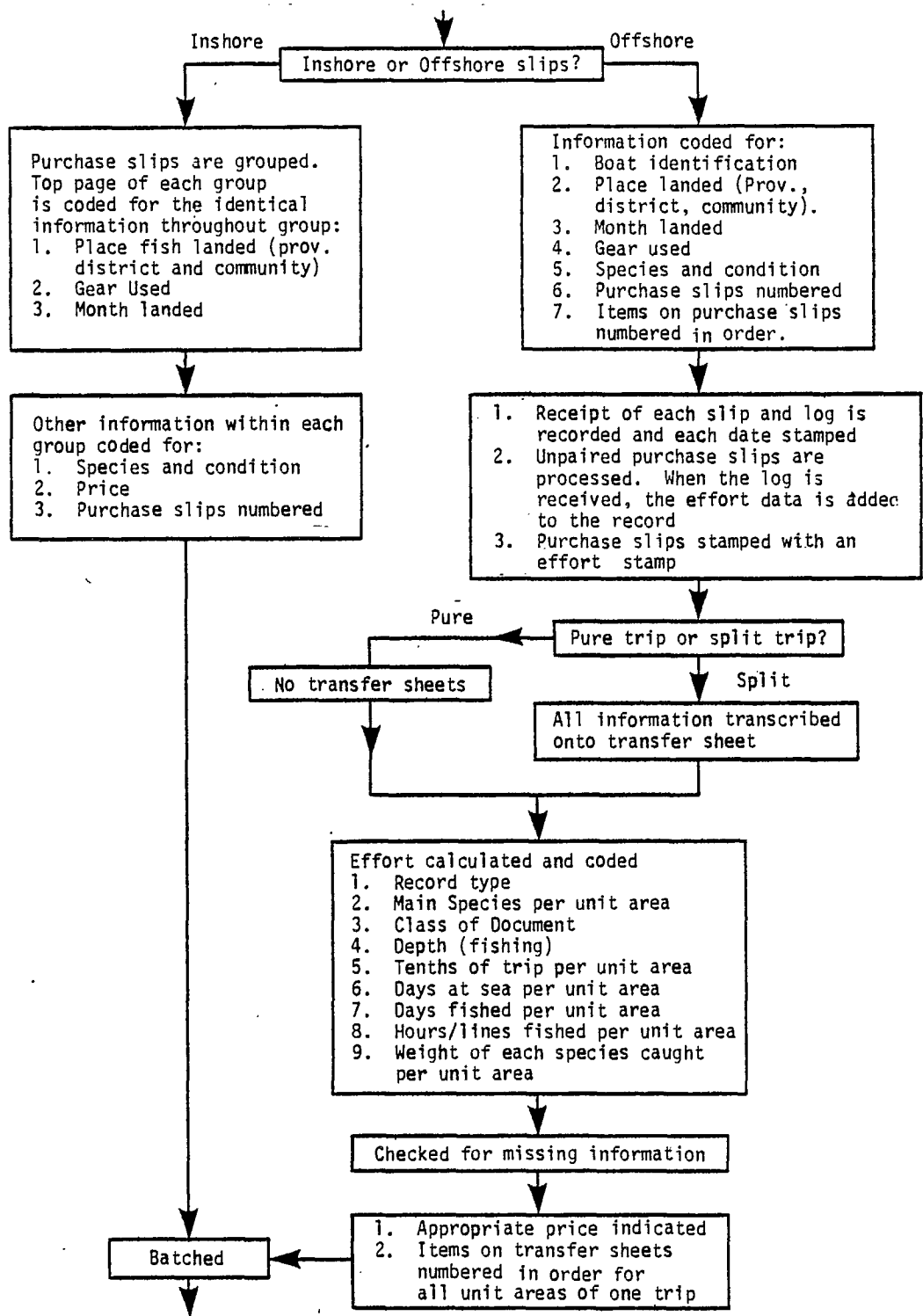


Figure 2b. Data coding procedures.

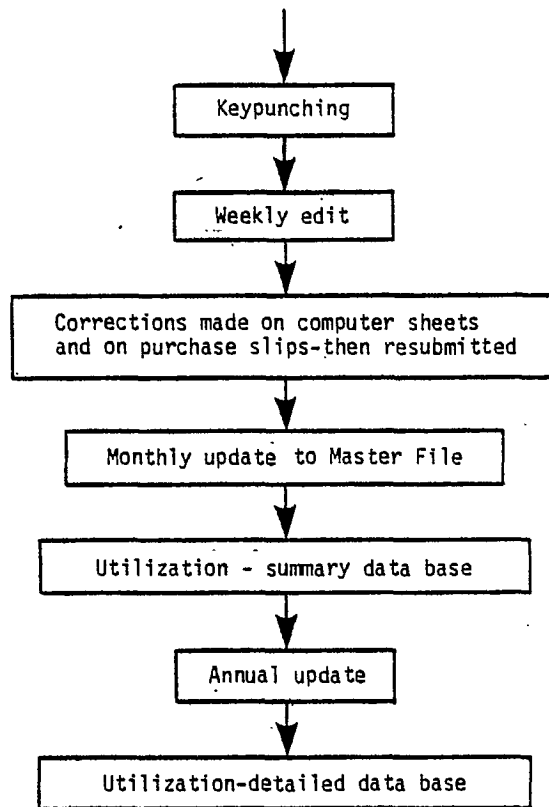


Figure 2c. Data entry procedures.

REQUIRED INFORMATION MUST BE COMPLETED ON EACH PURCHASE SLIP AT TIME OF DELIVERY
IL FAUT INSCRIRE TOUS LES RENSEIGNEMENTS REQUIS SUR CHAQUE BORDEREAU D'ACHAT AU MOMENT DE LA
LIVRAISON DU POISSON.

		Fisherman's Copy Copie du pêcheur
		303509
		Name of Boat/Nom du Bateau
		M.V. LOLLYPOP
		Place Fish Landed/ Poisson Débarqué à
		HALIFAX
		Date Landed/ Date du débarquement
		JULY 10/81
Buyer/Acheteur		C.F.V. #/N° Du B.P.C.
McMILLAN FISHERIES LTD		1234567
HALIFAX		Gear Used/ Engins de pêche utilisés
Fisherman/Pêcheur		GILLNET, Set
BOB O'BOYLE		ICNAF Div. du CIPANO 4W
HALIFAX		

Quantity Quantité	Unit Unité de mesure	Species Espèces	Price Prix	Amount Total
100	lbs	st. Cod	0.32	32.00
50	lbs	MxK Cod	0.27	13.50
25	lbs	Haddock	0.35	8.75
10	lbs	Round Pollock	0.20	2.00
185				56.25

081-4-0608 A

Figure 3. Example of a purchase slip resulting from an inshore vessel landing. The bold block indicates any corrections or additions that have been made by the Fisheries Officer.

REQUIRED INFORMATION MUST BE COMPLETED ON EACH PURCHASE SLIP AT TIME OF DELIVERY
IL FAUT INSCRIRE TOUS LES RENSEIGNEMENTS REQUIS SUR CHAQUE BORDEREAU D'ACHAT AU MOMENT DE LA LIVRAISON DU POISSON.

		Fisherman's Copy Copie du pêcheur
		303513
		Name of Boat/Nom du Bateau
		M.V. GOOD TIME
		Place Fish Landed/ Poisson Débarqué à
		SYDNEY
		Date Landed/ Date du débarquement
		JUNE 12/81
Buyer/Acheteur	C.F.V. #/N° Du B.P.C.	
SINCLAIR PROCESSING LTD	7654321	
	Gear Used/ Engins de pêche utilisés	Stern 7'0"
Fisherman/Pêcheur	OTTER TRAWL	
SYDNEY	ICNAF Div. du CIPANO	
J. REID	4X	
HALIFAX		

Quantity Quantité	Unit Unité de mesure	Species Espèces	Price Prix	Amount Total
600	lbs	ST. Cod	0.32	192.00
1700	lbs	Mrk. Cod	0.27	459.00
1800	lbs	Haddock	0.35	630.00
100	lbs	R. Pollock	0.20	20.00
400	lbs	R. Cusk	0.15	60.00
100	lbs	R. Catfish	0.12	12.00
10	lbs	Halibut	2.10	21.00
4710				1394.00

001-6-8000 A

Figure 4. Example of a purchase slip resulting from an offshore vessel landing. The bold blocking indicates any corrections or additions made by the Fisheries Officer.

WESTERN No. 2

19 81 VESSEL M.V. GOOD TIME TYPE OF GEAR OTTER TRAWL CAPTAIN J. REID TOTAL CREW 5
 TRIP No. 25 DATE SAILED 4 JUNE/81 DATE RETURNED 12 JUNE/81 PORT SOLD SYDNEY BUYER SINCLAIR PROCESSING

MONTH AND DATE	POSITION		DEPTH FATH.	EFFORT		ESTIMATED CATCH (LBS.)										REMARKS WEATHER, BOTTOM, TEAR UPS, OTHER VESSELS, ETC.							
	LAT. LORAN OR DECCA READING	LONG.		TOWS OR SETS	HRS. OR LINES FISHED	SAVED											DISCARDED						
						Cod	Had.	Red.	Hal.	Plaice Flounder	Yellow Tail	Wick Groysole	W. Flounder Blackback Lemonsole	Other G'Fish	Pollock		Cod	Had.	Oth.				
4 JUNE	STEAMING																						
5	C 64	J 40	4X0	65	6	17	600	300															
6	1H3 1141	B5	4X0	80	7	21	700	400															
7	1H3 1190	B5	4X0	86	6	15½	600	600															
8	1H3 1310	B15	4X0	65	6	16	500	200															
9	1H3 1360	B15	4X0	69	6	16	600																
10	1H3 1270	B4	4X0	80	5	22¼																	
11	1H3 1080	B8	4X0	87	4	8½																	
12	STEAMING - DOCKED AT SYDNEY 0600																						
							3000	1500			20		500	150									

USE NEW SHEET EACH TRIP

CONFIDENTIAL



Government of Canada
Fisheries and Oceans

Gouvernement du Canada
Pêches et Océans

Figure 5. Example of an offshore groundfish log record that was completed during a 'pure trip'. The information edited by the Fisheries Officer is indicated by the bold blocks.

REQUIRED INFORMATION MUST BE COMPLETED ON EACH PURCHASE SLIP AT TIME OF DELIVERY
IL FAUT INSCRIRE TOUS LES RENSEIGNEMENTS REQUIS SUR CHAQUE BORDEREAU D'ACHAT AU MOMENT DE LA LIVRAISON DU POISSON.

Buyer/Acheteur MC MILLAN FISHERIES LTD HALIFAX		Fisherman's Copy Copie du pêcheur 303511
Fisherman/Pêcheur BOB O'BOYLE HALIFAX		Name of Boat/Nom du Bateau MY LOLLYPOP Place Fish Landed/ Poisson Débarqué 12101 HALIFAX Date Landed/ Date du débarquement 07 JULY 10/81 C.F.V. #/N° Du B.P.C. 1234567 Gear Used/ Engins de pêche utilisés GILLNET, SET 06 ICNAF Div. du CIPANO 4W

Quantity Quantité	Unit Unité de mesure	Species Espèces	Price Prix	Amount Total
100	lbs	ST. COD	10092 X 0.32 or	32.00
50	lbs	Mrk Cod	10092 X 0.29 or	13.50
25	lbs	Haddock	11092 X 0.35 or	8.75
10	lbs	Round Pollock	17091 X 0.20 or	2.00
185				56.25

081-4-8603 A

Figure 7. Example of top slip (header) of a group of inshore purchase slips with the coding added. The information contained in the bold blocks is added by the coder.

REQUIRED INFORMATION MUST BE COMPLETED ON EACH PURCHASE SLIP AT TIME OF DELIVERY
IL FAUT INSCRIRE TOUS LES RENSEIGNEMENTS REQUIS SUR CHAQUE BORDEREAU D'ACHAT AU MOMENT DE LA
LIVRAISON DU POISSON.

C	Fisherman's Copy Copie du pêcheur	303512
	Name of Boat/Nom du Bateau 3454	M.V. GOOD TIME
	Place Fish Landed/ Poisson Débarqué à	SYDNEY 10601
	Date Landed/ Date du débarquement	06
Buyer/Acheteur	C.F.V. #/N° Du B.P.C.	JUNE 12/81
SINCLAIR PROCESSING LTD	7654321	
SYDNEY	Gear Used/ Engins de pêche utilisés	Stern 701 22
Fisherman/Pêcheur	OTTER TRAWL ICNAF Div. du GIPANO	
J. REID		
HALIFAX		4x

Quantity Quantité	Unit Unité de mesure	Species Espèces	Price Prix	Amount Total
600	lbs 1	ST. Cod	10092	0.32 or 192.00
1700	lbs 2	Mrk Cod	10092	0.27 or 459.00
1800	lbs 3	Haddock	11092	0.35 or 630.00
100	lbs 4	R. Pollock	17091	0.20 or 20.00
400	lbs 5	R. Cusk	17391	0.15 or 60.00
100	lbs 6	R. Catfish	17491	0.12 or 12.00
10	lbs 7	Halibut	13093	2.10 or 21.00
4710				1394.00

001-4-8008 A

Figure 8. Example of a coded offshore vessel purchase slip. The information in bold blocks is entered by the coder.

43-46	Gear Code	2	2	1	5	
47-50	ICNAF Area Alpha	4	X	0		
51-53	Main Species	1	0	0		
54	Depth	3				
55	Class	1				
56-57	Tenths of Trips	1	0			
58-60	Days at Sea	0	9	0	0	
61-62	Days Fished	0	7			
63-67	Hrs/lines Fished	0	0	1	1	6

Figure 9. The effort form stamped on the back of all offshore purchase slips and filled in for pure trips only.

OFFSHORE EFFORT TRANSFER SHEET
FOR DISTRIBUTION OF LANDINGS BY ICAF AREA

1-6 Slip Number 000651	7 Record Type C	8 Update Code □	9-13 Port of Landing 10601	19-24 Date Landed 061281 M M D D Y R	33-36 Offshore Vessel Number 3456
------------------------------	-----------------------	-----------------------	----------------------------------	---	---

43-48 Gear Code 2215				Gear Code 2215			
47-50 ICNAF Area Alpha 4XN				ICNAF Area Alpha 4X0			
51-53 Main Species 110				Main Species 100			
54 Depth 3				Depth 3			
55 Class 1				Class 1			
56-57 Tenths of Trips 02				Tenths of Trips 08			
58-60 Days at Sea 02.0				Days at Sea 07.0			
61-62 Days Fished 02				Days Fished 05			
63-67 Hrs/Lines Fished 00019				Hrs/Lines Fished 00086			
68-74 Weight	76-77 Item	78-82 Species Code	Price per lb.	Weight	Item	Species Code	Price per lb.
759	1	Cod 10092	0.28	1541	5	Cod 10092	0.28
900	2	Hadd 11092	0.35	900	6	Hadd 11092	0.35
		Redf 12091				Redf 12091	
5	3	Halib 13093	2.10	5	7	Halib 13092	2.10
		Plaic 1409				Plaic 1409	
		Ytail 1419				Ytail 1419	
		Witch 1429				Witch 1429	
		Wfldr 1439				Wfldr 1439	
		Turbot 1449				Turbot 1449	
		Mixed 1499				Mixed 1499	
		Pollk 1709		100	8	Pollk 1709	0.20
		Hake 1719				Hake 1719	
200	4	Cusk 1739	0.15	200	9	Cusk 1739	0.15
		Catf 1749		100	10	Catf 1749	0.12
		Monkf 1779				Monkf 1779	
		Miscel 19999				Miscel 19999	
		Mackl 25091				Mackl 25091	
		Skate 3569				Skate 3569	
		Shark 3799				Shark 3799	
		Sca11 6129				Sca11 6129	
		Squid 6139				Squid 6139	
		Shrimp 7029				Shrimp 7029	
		QCrab 7059				QCrab 7059	

Figure 10. Example of a completed transfer sheet as used in the calculation of effort for split offshore groundfish vessel trips.

Appendix A. Data Collection Forms

A.1 The Purchase Slip

The Government purchase slip (Figure H.1) presently available is designed for the recording of the quantity and value of fish landings. Its use is confined to the first commercial transaction between the fisherman and the buyer. The second, third, or subsequent purchases within the industry are excluded since they constitute a duplication.

Most of the data requests on the purchase slip are self-explanatory. Some, however, may be subject to a number of interpretations and are explained below. Names and addresses of buyers and sellers are not required for statistical purposes if other essential details are provided.

ADDRESS OF BUYER: This refers to the Buyer's place of business, not to his residence.

ADDRESS OF FISHERMAN: This refers to the fishing address or the port where the fisherman fishes, not the fisherman's home.

NAME OF BOAT: When a purchase slip covers landings made by a vessel 25.5 gross tons and over, the name of the vessel must be shown. These offshore slips are separated from other slips by the local Fisheries Officer and kept separated when mailed to district offices or to Halifax. These slips must be properly identified as they are used for special tabulations and studies by the Department and by international agencies.

PLACE FISH LANDED: This refers to the place where the fish was landed. The usual name of that landing point is used, whether it be the name of the wharf or the name of the community.

DATE LANDED: This is the date of landing for the species on that purchase slip only. Each new day that fish is landed a new purchase slip must be completed (occasionally this is not complied with).

CFV NO.: The CFV number (Commercial Fishing Vessel Registration Number) must appear in the appropriate block on ALL lobster boat purchase slips. On weir slips or delivery notes, the four-digit weir number is recorded. Inshore and offshore vessels, other than those mentioned above, are presently not required to submit a CFV number.

GEAR USED: This refers to the type, such as longline, lobster trap, etc.. For gill nets, drift net or set net is specified.

NAFO (ICNAF) DIVISION: This refers to the NAFO Division in which the fish was caught. For vessels under 25.5 gross tons, the NAFO

Division is not reported if the catch was taken in the same division as the port of landing.

QUANTITY: This refers to the total weight of a particular species and condition purchased.

UNIT: The preferred units of measurement are the pound or kilogram although other units, such as cwt., bbls., etc. are acceptable so long as the poundage each unit represents is made known.

SPECIES: This refers to the accepted name, such as cod or haddock, the accepted size such as market or scrod and the accepted condition such as dressed head on or round. For scallop meats and scallop roe purchased together the proportion of roe in the total is estimated.

PRICE: This refers to the price per unit, such as pound, bbl., tub. etc..

AMOUNT: This refers to the amount of money paid by the buyers for the total quantity.

A.2 Supplementary Purchase Slip - A

This form is almost identical in content to the conventional Government purchase slip. Its purpose is to serve as a recording document for first purchases of fish from fishermen by processors, commission agents, etc., when regular purchase slips are not obtainable. One supplementary purchase slip - A (Figure H.2) is completed for each community where such landings are made. Only first purchases of fish are recorded. Reporting of resales of fish results in double counting.

Some of the items requested are explained below:

STATISTICAL DISTRICT: This refers to the district in which the fish is landed. A map detailing the location of each statistical district is presented in Appendix H.7.

NAME OF BUYER: The purchaser such as National Sea.

ADDRESS OF BUYER: This refers to the Buyer's place of business not to his residence.

PLACE FISH BOUGHT: This refers to the place where the fish is landed, not to the place of purchase.

NAME OF VESSEL: Used only for those vessels larger than 25.5 gross tons.

QUANTITY: This refers to the total weight of fish sold by species and size. The preferred unit of measurement is the kilogram or the pound,

although other units such as cwt., bbls., etc. are acceptable so long as the poundage each unit represents is indicated.

SPECIES AND MARKET FORM: This refers to the accepted names such as cod and haddock as well as the accepted market forms such as steak, market, and scrod.

PRICE PER POUND: The amount paid by the pound. If units other than pounds were utilized than the price per unit used is indicated.

AMOUNT: The total dollars and cents paid for the quantity indicated.

GEAR USED: The type of fishing gear employed to catch the species indicated (i.e. other trawl, drift net).

REMARKS: This space is used to provide any additional information that is available and would help describe the landings on that slip.

A.3 Supplementary Purchase Slip - B

The Supplementary Purchase Slip - B (Figure H.3) is designed to serve as a recording document for all fish landings in a community each month which are not reported in fresh state on regular purchase slips or Supplementary Purchase Slips - A (Figure H.2). Specifically, it is intended to cover fish processing operations of fishermen which are carried out independently of the processing or secondary industry. This includes fish salted or pickled by the fishermen and later sold. The information entered on a typical Supplementary Purchase Slip - B is collected and submitted by the local Fisheries Officer or Statistical Officer. The accuracy depends directly on the officer's familiarity with the fishermen and the fishery in his district.

One Supplementary Purchase Slip - B is to be completed by the Statistical Coordinator at the end of each month for each community in his district.

Although the items requested are fairly self-explanatory, the following explanations are offered:

STATISTICAL DISTRICT: This refers to the district in which the fish is landed (if known). A map detailing the location of each statistical district is presented in Figure H.7.

NAME OF COMMUNITY: This is the place the fish is landed. If it is not known the place where the fisherman's processing operation is located is reported.

FISH PROCESSED BY FISHERMEN: This refers to salted, pickled, smoked or some such product produced from fish which fishermen catch themselves. Salted bait is included here. It should be

noted that the product weight of such fish is requested to be reported in pounds or kilograms. The reason is that it is normally easier for the Statistical Coordinator to establish the quantity of product which the fisherman has produced than the quantity of raw material which the product required. It also eliminates the need of any conversion from one state to another on the part of the officer, such conversion being made in the Halifax office with the use of standard factors. (Appendix C.) It should be noted also that the fresh fish price is required, not the product price. This affords the best value measurement of landings. As indicated above, the product reported is converted to a fresh weight basis in order to show the true volume of landings, then the fresh fish price is applied to give the landed value to fishermen.

FRESH FISH SALES: These refer to fresh fish sold by fishermen directly to the consuming public. The product weight as above, is requested. The market form will range from the round to the filleted states, and refers to the final form in which the fisherman disposes of his fish. The price desired is the going price received by fishermen for fresh fish in the district not the retail price.

FRESH FISH USED AS BAIT BY FISHERMAN: This refers to fresh herring, mackerel, etc., which fishermen catch themselves and use as bait.

OTHER LANDINGS: This refers to fish consumed by fishermen and their families, given to friends, used for fertilizer, etc.

DATE: This refers to the date the report is completed and forwarded to the Halifax office.

SUBMISSION: The report, when completed, is forwarded to the Halifax office not later than the 5th of the month following.

A.4 Purchase Slip Guide

Purchase slip guides (Figure H.4) are completed by the Statistical Coordinator whenever purchase slips are submitted to the Halifax office. The purpose of the guide is threefold: (a) to ensure the grouping of landings by districts on the basis of the communities where fish purchases are made; (b) to report omissions on purchase slips; and (c) to explain local terminology and clarify unusual or ambiguous entries.

A purchase slip guide accompanies the slips submitted for each buyer in each district. Some of the items required are not self-explanatory and are explained below:

STATISTICAL DISTRICT: Refers to the statistical district in which the fish are landed.

DATE: Refers to the date the purchase slip guide is completed by the fishery officer.

NAME OF BUYER: Refers to the individual or firm making the purchase.

ADDRESS OF BUYER: Refers to the place of business. If a buyer has a permanent residence in one region but sets up a temporary residence elsewhere to conduct this buying operations, the address given should be that of the temporary residence.

PROCESSOR: A buyer whose operations include changing the form or identity of the fish purchased.

COMMISSION AGENT: A buyer who purchases fish for others on a commission basis.

PEDDLER: A buyer who purchases fish, and sells or distributes it directly to the consumer.

ASSEMBLER: A buyer who purchases fish or fish products for future distribution. Usually such individuals are wholesalers. However, some of the smaller fish-handlers who purchase fish and sell to the highest bidder will fall into this class.

PLACE FISH BOUGHT: Refers to the community in which the landings is made. In the case of buyers who engage trucks or smacks to collect fish in a number of communities, the place fish landed should be the community where the "pick-up" is made, not the community where the parent plant is located. Again, where fishermen transport their fish to a buying station, the community where the buying station is located is the place fish landed.

FORM IN WHICH FISH OR SHELLFISH ARE SHOWN ON PURCHASE SLIPS: The species should be noted after the appropriate category, such as: Round -- herring, cusk; Gutted Head Off -- halibut; Gutted Head On -- cod, haddock, pollock, and so on.

WEIGHTS OF UNITS OF MEASURE: When the weights of the fish sold are shown on the purchase slips in containers such as tubs, baskets, barrels, hogsheads, etc., the weight per unit must be shown. When the quantity of fish is shown by count or number of fish the average weight per fish must be shown.

PRICE BY SPECIES: When the purchase slips do not show the amount paid for the fish purchased or the price per unit, this information must be shown on the guide.

GEAR USED: This refers to the type of gear used to catch the fish, such as trawl, hand line, etc.

REMARKS: Any additional information about the slips or the buyer and his activities should be noted here.

A.5 The Log Records

All operators of offshore vessels (25.5 gross tons and over) are required to keep an accurate daily log of all activities for each trip. The logs are provided free of charge from DFO and include instructions for completion along with an example trip. Hopefully the example alleviates any ambiguities for the fishermen.

Copies of two logs are presented. Each individual category on the groundfish log and pelagic log (Figure H.6) is explained below (Figure H.5).

GROUND FISH SPECIES LOG RECORD --

VESSEL: Name of the vessel that the log record is from.

TYPE OF GEAR: The type of gear used by that vessel to catch the species indicated.

CAPTAIN: The name of the captain of the vessel for the trip.

TOTAL CREW: The total number of men on board.

TRIP NUMBER: This is the number of trips the vessel has made that calendar year.

DATE SAILED: The date of departure from port on a new trip.

DATE RETURNED: The date of return to port where the landing is sold.

PORT SOLD: The name of the community in which the landing is sold.

BUYER: The name of the buyer, agent, etc., that actually purchases the landings.

MONTH AND DATE: Every day from date sailed to date returned is recorded and the specific details of that day are indicated.

POSITION: Indicate for each day at sea their location whether steaming or fishing. Record the area fished by latitude and longitude;

Loran or Decca bearings if possible. If not possible, identify the area in the best way possible: for example, Sambro Bank, Peak of Brown's Bank, St. Mary's Bay, etc.

DEPTH: Indicates the average fishing depth in fathoms for each day fished.

EFFORT: This indicates the total number of tows or sets for the day and the total number of hours fished or lines fished for that day.

ESTIMATED CATCH: Record the estimated catch of each species for the day (lbs) as well as "skunk hauls" (discarded).

REMARKS: As often as possible this column should be filled in indicating weather, type of bottom and/or tear ups, etc.

PELAGIC SPECIES LOG (HERRING LOG) --

VESSEL NAME: Name of fishing vessel.

CAPTAIN: The name of the captain of the vessel for the trip.

GEAR TYPE: The type of gear used to obtain the fish.

GEAR SIZE: This is the physical size of the gear and equals the length times the width of the gear (in fathoms).

DEPARTURE: Port where the vessel was fishing out of, with one page used per trip.

DATE: The date of departure from port.

TIME: The local time of departure from the port (24 hour clock).

LANDING: The port where the fish are sold.

DATE: The date when the vessel reaches the port.

TIME: The local time of arrival (24 hour clock).

FISHING GROUNDS SEARCHED: The general fishing area i.e. Browns Bank. If more than one area searched list sequentially.

SONAR TIME: The total time that the sonar was on during the trip, from the time "on" to time "off" with any temporary shutdowns listed in the comment section.

SET NUMBER: A sequential number for the order of sets deployed during each trip.

FISHING: Time for starting and finishing each set by the vessel for which the log is completed.

CARRYING: Times of sets and vessel name for sets by another vessel, but whose fish were being carried by the vessel named on the top of the log.

SET LOCATION: Point locations using latitudes and longitudes of the set or square locations, using square numbers obtained off of the map.

TOTAL CATCH: Total weight of fish caught.

TOTAL KEPT: Total weight of fish kept from the set, excluding the weight of any fish released.

BUYER: The name of the company who purchased the fish.

MARKET SOUGHT: The market for which the fish were intended even if no fish were caught, or the fish went to another market.

COMMENTS: Reserved for comments concerning the sets made, fishing conditions, problems, etc.

Appendix B. Data specifications for commercial catch/effort statistics: Input catch/effort Data for Scotia-Fundy Region (1979-82).

Fields 2, 3, 7, 8, 26, 27, 32, 33, and 34 are primarily concerned with data entry features of the system. These will be briefly described here and will not be referred to in Appendices C to G.

Characters are present in columns 45-46. The identity of these data could not be determined and thus specifications for these columns are not provided.

All numeric fields are right-justified and may or may not be zero filled. All alphanumeric fields are left-justified and are blank filled.

The character length of each record is 110 with blanks in columns 103-110.

Summary Data Specifications for Commercial
Catch/Effort Statistics

Input Catch/Effort Data for Scotia-Fundy Region (1979-82)

Field	Internal Representation	Position	Element Name
1	I6	1-6	Purchase Slip Number
2	A1	7	Record Type
3	A1	8	Update Code
4	I1	9	Province of Landing
5	I2	10-11	Statistical District of Landing
6	I2	12-13	Community of Landing
7	I3	14-16	Data Entry Date
8	I2	17-18	Tabulation Month
9	I2	19-20	Month of Landing
10	I2	21-22	Day of Landing
11	I2	23-24	Year of Landing
12	I7	25-31	CFV Number
13	I5	32-36	Lobster Boat CFV Number or Offshore Vessel Code
14	I2	37-38	Lobster Statistical District
15	I4	39-42	Weir Number
16	I2	43-44	Gear Code
17	A4	47-50	Unit Area of Capture
18	I3	51-53	Main Species Code
19	I1	54	Fishing Depth Code
20	I1	55	Class of Document
21	F2.1	56-57	Tenths of Trips

Summary Data Specifications for Commercial
Catch/Effort Statistics

Input Catch/Effort Data for Scotia-Fundy Region (1979-82)

Field	Internal Representation	Position	Element Name
22	F3.1	58-60	Days at Sea
23	I2	61-62	Days Fished
24	I5	63-67	Hours or Lines Fished
25	I7	68-74	Weight of Landing (lbs)
26	A1	75	Markup Flag
27	I2	76-77	Item Number
28	I3	78-80	Species Codes
29	I1	81	Market Category
30	I1	82	Condition Landed
31	I9	83-91	Value of Landed Catch
32	A1	92	Under 51 Flag
33	F5.2	93-97	Price Per Pound
34	A5	98-102	Batch Number

Data Structure Name: Commercial Catch/Effort Statistics

Data Substructure Name: Input Catch/Effort Data For Scotia-Fundy Region
(1979-82)

Data Element Identifiers:

Element Name : Record Type
Aliases : Record Type
Program Mnemonic : Record
Field Number : 2

Description:

The value in this field identifies the type of record with regard to effort, for editing purposes. The codes are:

Inshore Landing With No Effort : 'I'
Offshore Landings With No Effort : 'O'
Combined Offshore Landings With Effort : 'C'
Replacement for Offshore Landings With Effort : 'R'

Specifications:

Data Type : Coded
Code Reference Table : See Above
Internal Representation : A1
Position : 7
Range of Values : 'I', 'O', 'C', 'R'
Typical Values : -

Revision History:

Date of Original and Author :
Date of Latest Modification and Author:

Notes:

Data Structure Name: Commercial Catch/Effort Statistics

Data Substructure Name: Input Catch/Effort Data For Scotia-Fundy Region
(1979-82)

Data Element Identifiers:

Element Name : Update Code
Aliases : Update Code
Program Mnemonic : Update
Field Number : 3

Description:

The value in this field is a flag to identify whether or not the same record on the master input file should be added or deleted. The codes are:

Delete : 'D'
Add : ' '

Specifications:

Data Type : Coded
Code Reference Table : See Above
Internal Representation : A1
Position : 8
Range of Values : 'D', ' '
Typical Values : -

Revision History:

Date of Original and Author :
Date of Latest Modification and Author:

Notes:

Data Structure Name: Commercial Catch/Effort Statistics

Data Substructure Name: Input Catch/Effort Data For Scotia-Fundy Region
(1979-82)

Data Element Identifiers:

Element Name : Data Entry Date
Aliases : Entry Date
Program Mnemonic : Entry
Field Number : 7

Description:

The value in this field is the Julian Date of the day on which the information on the record was keypunched. It is assigned automatically by the data entry system.

Specifications:

Data Type : Uncoded
Code Reference Table : -
Internal Representation : I3
Position : 14-16
Range of Values : 001-366
Typical Values : 128

Revision History:

Date of Original and Author :
Date of Latest Modification and Author:

Notes:

Data Structure Name: Commercial Catch/Effort Statistics

Data Substructure Name: Input Catch/Effort Data For Scotia-Fundy Region
(1979-82)

Data Element Identifiers:

Element Name : Tabulation Month
Aliases : Keypunch Month
Program Mnemonic : Tab
Field Number : 8

Description:

This field contains the month on which the data for the trip was keypunched.

Specifications:

Data Type : Coded
Code Reference Table : -
Internal Representation : I2
Position : 17-18
Range of Values : 0-12, Blank
Typical Values : 6

Revision History:

Date of Original and Author :
Date of Latest Modification and Author:

Notes:

Data Structure Name: Commercial Catch/Effort Statistics

Data Substructure Name: Input Catch/Effort Data For Scotia-Fundy Region
(1979-82)

Data Element Identifiers:

Element Name : Markup Flag
Aliases : Markup
Program Mnemonic : Markup
Field Number : 26

Description:

The value in this field indicates whether or not to make a change in the price-per-pound data (Field 33).

Make A Change : 'M'
Make No Change : ' '

Specifications:

Data Type : Coded
Code Reference Table : See Above
Internal Representation : A1
Position : 75
Range of Values : 'M', ' '
Typical Values : -

Revision History:

Date of Original and Author :
Date of Latest Modification and Author:

Notes:

Data Structure Name: Commercial Catch/Effort Statistics

Data Substructure Name: Input Catch/Effort Data For Scotia-Fundy Region
(1979-82)

Data Element Identifiers:

Element Name : Item Number
Aliases : Item
Program Mnemonic : Item
Field Number : 27

Description:

The value in this field is the sequential number of the record for the trip, regardless if it is a split trip or not. The number is consecutive and contiguous.

Specifications:

Data Type : Uncoded
Code Reference Table : -
Internal Representation : I2
Position : 76-77
Range of Values : 01-99
Typical Values : 10

Revision History:

Date of Original and Author :
Date of Latest Modification and Author:

Notes:

Data Structure Name: Commercial Catch/Effort Statistics

Data Substructure Name: Input Catch/Effort Data For Scotia-Fundy Region
(1979-82)

Data Element Identifiers:

Element Name : Under 51 Flag
Aliases : Under 51 Flag
Program Mnemonic : Under
Field Number : 32

Description:

This field contains a code indicating whether or not the price-per-pound (Field 33) is less than 51 cents.

L.T. 51 Cents : 'U'
G.E. 51 Cents : ' '

Specifications:

Data Type : Coded
Code Reference Table : See Above
Internal Representation : A1
Position : 92
Range of Values : 'U', ' '
Typical Values : -

Revision History:

Date of Original and Author :
Date of Latest Modification and Author:

Notes:

Data Structure Name: Commercial Catch/Effort Statistics

Data Substructure Name: Input Catch/Effort Data For Scotia-Fundy Region
(1979-82)

Data Element Identifiers:

Element Name : Price-Per-Pound
Aliases : Price
Program Mnemonic : Price
Field Number : 33

Description:

The value in this field is the dockside price-per-pound in dollars paid for the species in the specified market category and condition. This, in combination with the landed weight in pounds is used to calculate the value which appears in the detailed catch/effort data.

Specifications:

Data Type : Uncoded
Code Reference Table : -
Internal Representation : F5.2
Position : 93-97
Range of Values : 10.00-0.05
Typical Values : 0.25

Revision History:

Date of Original and Author :
Date of Latest Modification and Author:

Notes:

Data Structure Name: Commercial Catch/Effort Statistics

Data Substructure Name: Input Catch/Effort Data For Scotia-Fundy Region
(1979-82)

Data Element Identifiers:

Element Name : Batch Number
Aliases : Batch
Program Mnemonic : Batch
Field Number : 34

Description:

The value in this field identifies a 'batch' of slips as to who coded and checked them prior to keypunching. The batch number aids in quickly locating a miscoded log or purchase slip.

Specifications:

Data Type : Uncoded
Code Reference Table : -
Internal Representation : A5
Position : 98-102
Range of Values : -
Typical Values : -

Revision History:

Date of Original and Author :
Date of Latest Modification and Author:

Notes:

Appendix C. Data specifications for commercial catch/effort statistics: Detailed Catch/Effort Data for Maritimes Region (1967-77).

Characters are present in the following columns:

11-12, 22, 26, 89-99

The identity of these data could not be determined and thus specifications for these columns are not provided.

All numeric fields are right-justified and may or may not be zero filled. All alphanumeric fields are left-justified and blank filled.

The character length of each record is 120 with blanks in columns 100-120.

Summary Data Specifications for Commercial
Catch/Effort Statistics

Detailed Catch/Effort Data for Maritimes Region (1967-77)

Field	Internal Representation	Position	Element Name
1	I2	1-2	Tabulation Month (See Appendix C, Field 8)
2	I4	3-6	Trip Number
3	I4	7-10	Offshore Vessel Code
4	I2	13-14	Month of Landing
5	I2	15-16	Year of Landing
6	I1	17	Province of Purchase
7	I2	18-19	Statistical District of Purchase
8	I2	20-21	Community of Purchase
9	I3	23-25	Main Species Code
10	I2	27-28	Gear Code
11	I1	29	Fishing Depth Code
12	I3	30-32	Unit Area of Capture (Offshore)
13	I1	33	Class of Document
14	F2.1	34-35	Tenths of Trips
15	F3.1	36-38	Days at Sea
16	I2	39-40	Days Fished
17	I5	41-45	Hours or Lines Fished
18	A1	46	Trip Card Code
19	I3	47-49	Species Code
20	I1	50	Market Category
21	I1	51	Condition Landed

Summary Data Specifications for Commercial
Catch/Effort Statistics

Detailed Catch/Effort Data for Maritimes Region (1967-77)

Field	Internal Representation	Position	Element Name
22	I9	52-60	Weight of Landing (lbs)
23	I9	61-69	Common Landed Weight
24	I7	70-76	Value of Landed Catch
25	I9	77-85	Weight of Landing (kg)
26	A3	86-88	Unit Area of Capture (Inshore)

Data Structure Name: Commercial Catch/Effort Statistics

Data Substructure Name: Detailed Catch/Effort Data for Maritimes Region
(1967-77)

Data Element Identifiers:

Element Name : Trip Number
Aliases : Trip
Program Mnemonic : Trip
Field Number : 2

Description:

This field contains a number which is unique for each trip of any vessel during one year. It is not necessarily consecutive and contiguous. The assignment is done automatically upon data entry. The value 0000 indicates the trip of an inshore vessel.

Specifications:

Data Type : Non-Coded
Code Reference Table : -
Internal Representation : I4
Position : 3-6
Range of Values : 0000-9999
Typical Values : 50

Revision History:

Date of Original and Author :
Date of Latest Modification and Author:

Notes:

Data Structure Name: Commercial Catch/Effort Statistics

Data Substructure Name: Detailed Catch/Effort Data for Maritimes Region
(1967-77)

Data Element Identifiers:

Element Name : Offshore Vessel Code
Aliases : Vessel ID, Vessel Code
Program Mnemonic : OVC
Field Number : 3

Description:

A full description of the OVC is attached.

Specifications:

Data Type : Coded
Code Reference Table : Statistics Division, DFO, Halifax
Internal Representation : I4
Position : 7-10
Range of Values : ~~0000~~-9999
Typical Values : 3419

Revision History:

Date of Original and Author :
Date of Latest Modification and Author:

Notes:

This field contains a code which uniquely identifies a vessel in a particular year. It is important to note that if a vessel leaves the fleet, the code can be reassigned to a new vessel. Thus the code is not uniquely assigned. The first column in the field contains a code for the tonnage class of the vessel. These are:

<u>Code</u>	<u>Gross Tonnage</u>
0+1	0-25.5
2	25.5-49.9
3	50-149.9
4	150-449.9
5	500-999.9
6	1000-1999.9
7	2000 and up

The last three columns contain a number associated with a vessel within the identified tonnage class. An index of these is available from Statistic Division, DFO, Halifax.

Code 0200 indicates an unknown vessel.

Inshore vessel codes (0000-1999) during the 1970-1977 period are unspecified with regard to vessel name and thus cannot be used to identify particular vessels.

Data Structure Name: Commercial Catch/Effort Statistics

Data Substructure Name: Detailed Catch/Effort Data for Maritimes Region
(1967-77)

Data Element Identifiers:

Element Name : Month of Landing
Aliases : Month
Program Mnemonic : Month
Field Number : 4

Description:

This field contains a value indicating the month of the year in which the landing for the trip, represented by the record, was made.

Specifications:

Data Type : Coded
Code Reference Table : -
Internal Representation : I2
Position : 13-14
Range of Values : 01-12
Typical Values : 06

Revision History:

Date of Original and Author :
Date of Latest Modification and Author:

Notes:

Data Structure Name: Commercial Catch/Effort Statistics

Data Substructure Name: Detailed Catch/Effort Data for Maritimes Region
(1967-77)

Data Element Identifiers:

Element Name : Year of Landing
Aliases : Year
Program Mnemonic : Year
Field Number : 5

Description:

The value in this field is the year in which the landing for the trip represented by this record was made.

Specifications:

Data Type : Uncoded
Code Reference Table : -
Internal Representation : I2
Position : 15-16
Range of Values : 67-77
Typical Values : 73

Revision History:

Date of Original and Author :
Date of Latest Modification and Author:

Notes:

Data Structure Name: Commercial Catch/Effort Statistics

Data Substructure Name: Detailed Catch/Effort Data for Maritimes Region
(1967-77)

Data Element Identifiers:

Element Name : Province of Purchase
Aliases : Province
Program Mnemonic : Prov.
Field Number : 6

Description:

The value in this field indicates the province in which the landing was sold.

Specifications:

Data Type : Coded
Code Reference Table : Table H.1
Internal Representation : I1
Position : 17
Range of Values : 1-5
Typical Values : 1

Revision History:

Date of Original and Author :
Date of Latest Modification and Author:

Notes:

Data Structure Name: Commercial Catch/Effort Statistics

Data Substructure Name: Detailed Catch/Effort Data for Maritimes Region
(1967-77)

Data Element Identifiers:

Element Name : Statistical District of Purchase
Aliases : Statistical District
Program Mnemonic : Dist.
Field Number : 7

Description:

The value in this field identifies the Statistical District in which the landings were sold. The value is unique within Province (Field 6). The attached map (Figure H.7) shows the Statistical Districts for the Atlantic Zone.

Specifications:

Data Type : Coded
Code Reference Table : Figure H.7
Internal Representation : I2
Position : 18-19
Range of Values : 01-96
Typical Values : 28

Revision History:

Date of Original and Author :
Date of Latest Modification and Author:

Notes:

Data Structure Name: Commercial Catch/Effort Statistics

Data Substructure Name: Detailed Catch/Effort Data for Maritimes Region
(1967-77)

Data Element Identifiers:

Element Name : Community of Purchase
Aliases : Community, Port
Program Mnemonic : Comm.
Field Number : 8

Description:

The value in this field uniquely identifies the community in which the landing was sold. It is unique within province and Statistical District. Listings of these can be obtained from regional statistics offices. Those for Nova Scotia, New Brunswick, and P.E.I. are attached.

Specifications:

Data Type : Coded
Code Reference Table : Table H.2
Internal Representation : I2
Position : 20-21
Range of Values : 01-99
Typical Values : 05

Revision History:

Date of Original and Author :
Date of Latest Modification and Author:

Notes:

Data Structure Name: Commercial Catch/Effort Statistics

Data Substructure Name: Detailed Catch/Effort Data for Maritimes Region
(1967-77)

Data Element Identifiers:

Element Name : Main Species Code
Aliases : Main Species
Program Mnemonic : Main
Field Number : 9

Description:

The value in this field is the code for the species which represents the greatest proportion of the catch for the trips in question. In the case of split trips the code is for the species which represents the greatest proportion of the catch in the Unit Area identified in Field 12 or 26. This field is not applicable to inshore records.

Specifications:

Data Type : Coded
Code Reference Table : Table H.3
Internal Representation : I3
Position : 23-25
Range of Values : 000-907
Typical Values : 110

Revision History:

Date of Original and Author :
Date of Latest Modification and Author:

Notes:

Data Structure Name: Commercial Catch/Effort Statistics

Data Substructure Name: Detailed Catch/Effort Data for Maritimes Region
(1967-77)

Data Element Identifiers:

Element Name : Gear Code
Aliases : Gear
Program Mnemonic : Gear
Field Number : 10

Description:

The value in this field is the code representing the gear used to catch the landings reported for the trip in question.

Specifications:

Data Type : Coded
Code Reference Table : Table H.4
Internal Representation : I2
Position : 27-28
Range of Values : 01-90
Typical Values : 11

Revision History:

Date of Original and Author :
Date of Latest Modification and Author:

Notes:

Data Structure Name: Commercial Catch/Effort Statistics

Data Substructure Name: Detailed Catch/Effort Data for Maritimes Region
(1967-77)

Data Element Identifiers:

Element Name : Fishing Depth Code
Aliases : Depth
Program Mnemonic : Depth
Field Number : 11

Description:

The value in this field is a code representing the depth range in fathoms fished during the trips represented by this record. It is only applicable to offshore vessels. In the case of split trips, this range is that observed in the Unit Area of capture, designated by Field 12 or 26.

Specifications:

Data Type : Coded
Code Reference Table : Table H.5
Internal Representation : I1
Position : 29
Range of Values : 0-9
Typical Values : 4

Revision History:

Date of Original and Author :
Date of Latest Modification and Author:

Notes:

Data Structure Name: Commercial Catch/Effort Statistics

Data Substructure Name: Detailed Catch/Effort Data for Maritimes Region
(1967-77)

Data Element Identifiers:

Element Name : Unit Area of Capture (Offshore)
Aliases : Offshore Area
Program Mnemonic : Offa
Field Number : 12

Description:

The value in this field is the code which represents the Statistical Unit Area in which the catch and effort data on this record was employed. The codes in this field are numeric and apply only to offshore vessels. Codes other than those on Table H.6 exist on the computer file. The areas for these are unknown specifically. They are only indicative of the ICNAF/NAFO Division of Capture, which is given by the first two digits in the field.

Specifications:

Data Type : Coded
Code Reference Table : Table H.6, Figure H.8
Internal Representation : I3
Position : 30-32
Range of Values : 000-680
Typical Values : 467

Revision History:

Date of Original and Author :
Date of Latest Modification and Author:

Notes:

1. Code 000 applies to those records for trips made by inshore vessels.
2. The boundaries shown on Figure H.8 are only for illustration and are not official.

Data Structure Name: Commercial Catch/Effort Statistics

Data Substructure Name: Detailed Catch/Effort Data for Maritimes Region
(1967-77)

Data Element Identifiers:

Element Name : Class of Document
Aliases : Class
Program Mnemonic : Class
Field Number : 13

Description:

The code in this field represents the availability of effort data for the trip represented by this record. All inshore records will have a blank (read as Ø) in this field. Also the class will depend on the vessel type (indicated by gear code [Field 10]).

Specifications:

Data Type : Coded
Code Reference Table : Table H.7
Internal Representation : I1
Position : 33
Range of Values : Ø-9
Typical Values : 1

Revision History:

Date of Original and Author :
Date of Latest Modification and Author:

Notes:

Data Structure Name: Commercial Catch/Effort Statistics

Data Substructure Name: Detailed Catch/Effort Data for Maritimes Region
(1967-77)

Data Element Identifiers:

Element Name : Tenths of Trip
Aliases : Tenths
Program Mnemonic : Ten
Field Number : 14

Description:

This field contains the fraction of the trip's total effort, based on hours or lines fished (Field 17), that was expended in the Unit Area (Field 12) given on this record. Thus if a vessel spent 30 hours of a 150 hour trip fishing in 4Xm, this field would contain the value $30/150 = 0.2$. All values are rounded to nearest whole number.

Specifications:

Data Type : Uncoded
Code Reference Table : -
Internal Representation : F2.1
Position : 34-35
Range of Values : 0.1-1.0
Typical Values : 0.5

Revision History:

Date of Original and Author :
Date of Latest Modification and Author:

Notes:

1. This field only applies to data for offshore vessels.

Data Structure Name: Commercial Catch/Effort Statistics

Data Substructure Name: Detailed Catch/Effort Data for Maritimes Region
(1967-77)

Data Element Identifiers:

Element Name : Days at Sea
Aliases : Days at Sea
Program Mnemonic : Sea
Field Number : 15

Description:

The value in this field is the port to port days at sea, to the nearest 0.5 days. In the case of split trips, the days at sea are those expended in the Unit Area given in Field 12 or 26. In all cases, fishing and steaming time are combined in those Unit Areas fished at the start and end of a trip. No effort is available for inshore boats. In the case where the logs are undecipherable, this field is left blank.

Specifications:

Data Type : Uncoded
Code Reference Table : -
Internal Representation : F3.1
Position : 36-38
Range of Values : 01.0-41.0
Typical Values : 10.0

Revision History:

Date of Original and Author :
Date of Latest Modification and Author:

Notes:

Data Structure Name: Commercial Catch/Effort Statistics

Data Substructure Name: Detailed Catch/Effort Data for Maritimes Region
(1967-77)

Data Element Identifiers:

Element Name : Days Fished
Aliases : Days Fished
Program Mnemonic : Days
Field Number : 16

Description:

The value in this field is the days fished to the nearest day. In the case of split trips, the days fished are those expended in the Unit Areas given in Field 12 or 26. No effort is available for inshore boats. In the case where the logs are undecipherable, this field is left blank.

Specifications:

Data Type : Uncoded
Code Reference Table : -
Internal Representation : I2
Position : 39-40
Range of Values : 01-41
Typical Values : 6

Revision History:

Date of Original and Author :
Date of Latest Modification and Author:

Notes:

Data Structure Name: Commercial Catch/Effort Statistics

Data Substructure Name: Detailed Catch/Effort Data for Maritimes Region
(1967-77)

Data Element Identifiers:

Element Name : Hours or Lines Fished
Aliases : Hours/Lines
Program Mnemonic : Hours
Field Number : 17

Description:

The value in this field is the hours or lines fished to the nearest hour or line. In the case of split trips, this value applies only to the Unit Area given in Field 12 or 26. In the case where the logs are undecipherable, this field is left blank. No effort is available for inshore boats.

Specifications:

Data Type : Uncoded
Code Reference Table : -
Internal Representation : I5
Position : 41-45
Range of Values : -
Typical Values : -

Revision History:

Date of Original and Author :
Date of Latest Modification and Author:

Notes:

Data Structure Name: Commercial Catch/Effort Statistics

Data Substructure Name: Detailed Catch/Effort Data for Maritimes Region
(1967-77)

Data Element Identifiers:

Element Name : Trip Card Code
Aliases : Card Code
Program Mnemonic : Card
Field Number : 18

Description:

The character in this field delimits a set of records composing a trip. The first record of a trip keypunched is keyed with a '-' in this field. All subsequent records for the same trip are keyed with a '0' in this field. A small percentage of records within a year have undefinable codes ('A' - 'Z') and thus decrease the utility of this field.

Specifications:

Data Type : Coded
Code Reference Table : See Above
Internal Representation : A1
Position : 46
Range of Values : '-', '0'
Typical Values :

Revision History:

Date of Original and Author :
Date of Latest Modification and Author:

Notes:

Data Structure Name: Commercial Catch/Effort Statistics

Data Substructure Name: Detailed Catch/Effort Data for Maritimes Region
(1967-77)

Data Element Identifiers:

Element Name : Species Code
Aliases : Species Caught
Program Mnemonic : Species
Field Number : 19

Description:

The value in this field is the code for the species associated with the landings reported on this record.

Specifications:

Data Type : Coded
Code Reference Table : Table H.3
Internal Representation : I3
Position : 47-49
Range of Values : 100-907
Typical Values : 110

Revision History:

Date of Original and Author :
Date of Latest Modification and Author:

Notes:

Data Structure Name: Commercial Catch/Effort Statistics

Data Substructure Name: Detailed Catch/Effort Data for Maritimes Region
(1967-77)

Data Element Identifiers:

Element Name : Market Category
Aliases : Market
Program Mnemonic : Mark
Field Number : 20

Description:

The value in this field is a code representing the market category of the landings of the species given on this record.

Specifications:

Data Type : Coded
Code Reference Table : Table H.8
Internal Representation : I1
Position : 50
Range of Values : 0-9
Typical Values : 1

Revision History:

Date of Original and Author :
Date of Latest Modification and Author:

Notes:

Data Structure Name: Commercial Catch/Effort Statistics

Data Substructure Name: Detailed Catch/Effort Data for Maritimes Region
(1967-77)

Data Element Identifiers:

Element Name : Condition Landed
Aliases : Condition
Program Mnemonic : Cond
Field Number : 21

Description:

The value in this field represents the condition of the landings for the species represented by this record.

Specifications:

Data Type : Coded
Code Reference Table : Table H.9
Internal Representation : I1
Position : 51
Range of Values : 1-9
Typical Values : 1

Revision History:

Date of Original and Author :
Date of Latest Modification and Author:

Notes:

Data Structure Name: Commercial Catch/Effort Statistics

Data Substructure Name: Detailed Catch/Effort Data for Maritimes Region
(1967-77)

Data Element Identifiers:

Element Name : Weight of Landing
Aliases : Weight in Pounds
Program Mnemonic : Pound
Field Number : 22

Description:

The value in this field is the dockside weight, to the nearest pound, of the species landed by the trip represented by this record. The market category and condition are indicated in Fields 20 and 21. In the case of split trips, the landings only apply to the Unit Area designed by Field 12 or 26. This field is used to calculate round and common landed weights provided in Fields 25 and 23.

Specifications:

Data Type : Uncoded
Code Reference Table : -
Internal Representation : I9
Position : 52-60
Range of Values : 000000001-999999999
Typical Values : 100000

Revision History:

Date of Original and Author :
Date of Latest Modification and Author:

Notes:

Data Structure Name: Commercial Catch/Effort Statistics

Data Substructure Name: Detailed Catch/Effort Data for Maritimes Region
(1967-77)

Data Element Identifiers:

Element Name : Common Landed Weight
Aliases : Common Weight
Program Mnemonic : Comm
Field Number : 23

Description:

The value in this field is the common landed weight, to the nearest pound, of the species landed by the trip represented by this record. This value is obtained by multiplying the value in Field 22 by the appropriate conversion factor given in Table H.10. In the case of split trips, the landings only apply to the Unit Area designated by Field 12 or 26.

Specifications:

Data Type : Uncoded
Code Reference Table : Table H.10
Internal Representation : I9
Position : 61-69
Range of Values : 000000001-999999999
Typical Values : 100000

Revision History:

Date of Original and Author :
Date of Latest Modification and Author:

Notes:

Data Structure Name: Commercial Catch/Effort Statistics

Data Substructure Name: Detailed Catch/Effort Data for Maritimes Region
(1967-77)

Data Element Identifiers:

Element Name : Value of Landed Catch
Aliases : Value
Program Mnemonic : Value
Field Number : 24

Description:

The value in this field is the total amount, to the nearest dollar, paid for the landings of the species caught on the trip. Where a number of conditions are involved, in a split trip, an average price-per-pound is calculated as $\Sigma \text{wt} / \Sigma \text{value}$ and the total weight for the Unit Area is multiplied by this figure to obtain a value. Data in this field is only available for 1976-77.

Specifications:

Data Type : Uncoded
Code Reference Table : -
Internal Representation : I7
Position : 70-76
Range of Values : 0000001-9999999
Typical Values : 10000

Revision History:

Date of Original and Author :
Date of Latest Modification and Author:

Notes:

Data Structure Name: Commercial Catch/Effort Statistics

Data Substructure Name: Detailed Catch/Effort Data for Maritimes Region
(1967-77)

Data Element Identifiers:

Element Name : Weight of Landings (kg)
Aliases : Weight Caught
Program Mnemonic : Round
Field Number : 25

Description:

The value in this field is the round weight to the nearest kg, of the species landed by the trip represented by this record. In the case of split trips, the landings only apply to the Unit Area designated by Field 12 or 26. The value is calculated by multiplying the value in Field 22 by the appropriate conversion factor given in Table H.10.

Specifications:

Data Type : Uncoded
Code Reference Table : -
Internal Representation : I9
Position : 77-85
Range of Values : 000000001-999999999
Typical Values : 1000000

Revision History:

Date of Original and Author :
Date of Latest Modification and Author:

Notes:

Data Structure Name: Commercial Catch/Effort Statistics

Data Substructure Name: Detailed Catch/Effort Data for Maritimes Region
(1967-77)

Data Element Identifiers:

Element Name : Unit Area of Capture (Inshore)
Aliases : Inshore Area
Program Mnemonic : INA
Field Number : 26

Description:

The value in this field represents the area of capture of the species landed by the trip represented by this record. The contents depends on the vessel type:

Inshore Vessels: The value is the Unit Area when available. In 1975 and 1977, only information at the Division level is available. The codes can be either numeric or alphanumeric. Conversion between the two can be achieved using Table H.6.

Offshore Vessels: The value in the ICNAF/NAFO Division in alphanumeric representation (Figure H.9). The Unit Area of capture for these vessels is available from Field 12.

Specifications:

Data Type : Coded
Code Reference Table : Table H.6
Internal Representation : A3
Position : 86-88
Range of Values : See Table H.6
Typical Values : 4Xn, 361

Revision History:

Date of Original and Author :
Date of Latest Modification and Author:

Notes:

Appendix D. Data specifications for commercial catch/effort statistics: Detailed Catch/Effort Data for Scotia-Fundy Region (1978)

Characters are present in the following columns:

11-12, 25-26

The identity of these data could not be determined and thus specifications for these fields are not provided.

All numeric fields are right-justified and may or may not be zero filled. All alphanumeric fields are left-justified and blank filled.

The characters length of each record is 125 with blanks in columns 123-125.

Summary Data Specifications for Commercial
Catch/Effort Statistics

Detailed Catch/Effort Data for Scotia-Fundy Region (1978)

Field	Internal Representation	Position	Element Name
1	I2	1-2	Tabulation Month (see Appendix B, Field 8)
2	I1	3	Fishing Depth Code
3	I5	4-8	Lobster Boat CFV Number
4	I2	9-10	Lobster Statistical District
5	I2	13-14	Month of Landing
6	I2	15-16	Year of Landing
7	I1	17	Province of Purchase
8	I2	18-19	Statistical District of Purchase
9	I2	20-21	Community of Landing
10	I3	22-24	Main Species Code
11	I2	27-28	Gear Code
12	A1	29	Inshore-Offshore Flag
13	A3	30-32	NAFO Division of Capture
14	I1	33	Class of Document
15	F2.1	34-35	Tenths of Trips
16	F3.1	36-38	Days at Sea
17	I2	39-40	Days Fished
18	I5	41-45	Hours or Lines Fished
19	A1	46	Trip Card Code
20	I3	47-49	Species Code
21	I1	50	Market Category

Summary Data Specifications for Commercial
Catch/Effort Statistics

Detailed Catch/Effort Data for Scotia-Fundy Region (1978)

Field	Internal Representation	Position	Element Name
22	I1	51	Condition Landed
23	I9	52-60	Weight of Landing (lbs)
24	I9	61-69	Common Landed Weight
25	I7	70-76	Value of Landed Catch
26	I9	77-85	Weight of Landing (kg)
27	A3	86-88	Unit Area of Capture
28	I2	89-90	Days of Landing
29	I4	91-94	Weir Number
30	I7	95-101	CFV Number
31	I6	102-107	Purchase Slip Number
32	I2	108-109	Item Number (See Appendix B, Field 27)
33	A1	110	Record Type (See Appendix B, Field 2)
34	A1	111	Update Code (See Appendix B, Field 3)
35	I4	112-115	Offshore Vessel Code
36	I4	116-119	Trip Number
37	I3	120-122	Data Entry Date (See Appendix B, Field 7)

Data Structure Name: Commercial Catch/Effort Statistics

Data Substructure Name: Detailed Catch/Effort Data for Scotia-Fundy
Region (1978)

Data Element Identifiers:

Element Name : Fishing Depth Code
Aliases : Depth
Program Mnemonic : Depth
Field Number : 2

Description:

The value in this field is a code representing the depth range in fathoms fished during the trip represented by this record. It is only applicable to offshore vessels. In the case of split trips, this range is that observed in the Unit Area of capture, designated by Field 27.

Specifications:

Data Type : Coded
Code Reference Table : Table H.5
Internal Representation : I1
Position : 3
Range of Values : 0-9
Typical Values : 4

Revision History:

Date of Original and Author :
Date of Latest Modification and Author:

Notes:

Data Structure Name: Commercial Catch/Effort Statistics

Data Substructure Name: Detailed Catch/Effort Data for Scotia-Fundy Region (1978)

Data Element Identifiers:

Element Name : Lobster Boat CFV Number
Aliases : Lobster Boat VID
Program Mnemonic : Lobvid
Field Number : 3

Description:

The value in this field is a code uniquely identifying a lobster boat. The vessel code file can be obtained from Statistics Division, Halifax. A value of 00000 is present for non-lobster boat trips.

Specifications:

Data Type : Coded
Code Reference Table : Statistics Division, Halifax
Internal Representation : I5
Position : 4-8
Range of Values : 00000-99999
Typical Values : 29320

Revision History:

Date of Original and Author :
Date of Latest Modification and Author:

Notes:

Data Structure Name: Commercial Catch/Effort Statistics

Data Substructure Name: Detailed Catch/Effort Data for Scotia-Fundy Region (1978)

Data Element Identifiers:

Element Name : Lobster Statistical District
Aliases : Lobster District
Program Mnemonic : Lobdis
Field Number : 4

Description:

The value in this field is a code representing the Statistical District of landing of the lobster represented by this record. A value of 00 is present for non-lobster boat trips.

Specifications:

Data Type : Coded
Code Reference Table : Table H.11 and Figure H.10
Internal Representation : I2
Position : 9-10
Range of Values :
Typical Values : 05

Revision History:

Date of Original and Author :
Date of Latest Modification and Author:

Notes:

Data Structure Name: Commercial Catch/Effort Statistics

Data Substructure Name: Detailed Catch/Effort Data for Scotia-Fundy
Region (1978)

Data Element Identifiers:

Element Name : Month of Landing
Aliases : Month
Program Mnemonic : Month
Field Number : 5

Description:

This field contains a value indicating the month of the year in which the landing for the trip, represented by the record, was made.

Specifications:

Data Type : Coded
Code Reference Table : -
Internal Representation : I2
Position : 13-14
Range of Values : 01-12
Typical Values : 06

Revision History:

Date of Original and Author :
Date of Latest Modification and Author:

Notes:

Data Structure Name: Commercial Catch/Effort Statistics

Data Substructure Name: Detailed Catch/Effort Data for Scotia-Fundy Region (1978)

Data Element Identifiers:

Element Name : Year of Landing
Aliases : Year
Program Mnemonic : Year
Field Number : 6

Description:

The value in this field is the year in which the landing for the trip represented by this record was made.

Specifications:

Data Type : Uncoded
Code Reference Table : -
Internal Representation : I2
Position : 15-16
Range of Values : 78
Typical Values : 78

Revision History:

Date of Original and Author :
Date of Latest Modification and Author:

Notes:

Data Structure Name: Commercial Catch/Effort Statistics

Data Substructure Name: Detailed Catch/Effort Data for Scotia-Fundy
Region (1978)

Data Element Identifiers:

Element Name : Province of Purchase
Aliases : Province
Program Mnemonic : Prov.
Field Number : 7

Description:

The value in this field indicates the province in which the landing was sold.

Specifications:

Data Type : Coded
Code Reference Table : Table H.1
Internal Representation : I1
Position : 17
Range of Values : 1-5
Typical Values : 1

Revision History:

Date of Original and Author :
Date of Latest Modification and Author:

Notes:

Data Structure Name: Commercial Catch/Effort Statistics

Data Substructure Name: Detailed Catch/Effort Data for Scotia-Fundy
Region (1978)

Data Element Identifiers:

Element Name : Statistical District of Purchase
Aliases : Statistical District
Program Mnemonic : Dist
Field Number : 8

Description:

The value in this field identifies the Statistical District in which the landings were sold. The value is unique within Province (Field 7). The attached map shows the Statistical Districts for the Atlantic Zone.

Specifications:

Data Type : Coded
Code Reference Table : Figure H.7
Internal Representation : I2
Position : 18-19
Range of Values : 01-96
Typical Values : 28

Revision History:

Date of Original and Author :
Date of Latest Modification and Author:

Notes:

Data Structure Name: Commercial Catch/Effort Statistics

Data Substructure Name: Detailed Catch/Effort Data for Scotia-Fundy
Region (1978)

Data Element Identifiers:

Element Name : Community of Landing
Aliases : Community, Port
Program Mnemonic : Comm.
Field Number : 9

Description:

The value in this field uniquely identifies the community in which the landing was sold. It is unique within province and Statistical District. Listings of these can be obtained from regional statistics offices. Those for Nova Scotia, New Brunswick, and P.E.I. are attached.

Specifications:

Data Type : Coded
Code Reference Table : Table H.2
Internal Representation : I2
Position : 20-21
Range of Values : 01-99
Typical Values : 05

Revision History:

Date of Original and Author :
Date of Latest Modification and Author:

Notes:

Data Structure Name: Commercial Catch/Effort Statistics

Data Substructure Name: Detailed Catch/Effort Data for Scotia-Fundy
Region (1978)

Data Element Identifiers:

Element Name : Main Species Code
Aliases : Main Species
Program Mnemonic : Main
Field Number : 10

Description:

The value in this field is the code for the species which represents the greatest proportion of the catch for the trip in question. In the case of split trips, the code is for the species which represents the greatest proportion of the catch in the Unit Area identified in Field 27. This field is not applicable to inshore records.

Specifications:

Data Type : Coded
Code Reference Table : Table H.3
Internal Representation : I3
Position : 22-24
Range of Values : 000-907
Typical Values : 110

Revision History:

Date of Original and Author :
Date of Latest Modification and Author:

Notes:

Data Structure Name: Commercial Catch/Effort Statistics

Data Substructure Name: Detailed Catch/Effort Data for Scotia-Fundy
Region (1978)

Data Element Identifiers:

Element Name : Gear Code
Aliases : Gear
Program Mnemonic : Gear
Field Number : 11

Description:

The value in this field is the code representing the gear used to catch the landings reported for the trip in question.

Specifications:

Data Type : Coded
Code Reference Table : Table H.4
Internal Representation : I2
Position : 27-28
Range of Values : 01-90
Typical Values : 11

Revision History:

Date of Original and Author :
Date of Latest Modification and Author:

Notes:

Data Structure Name: Commercial Catch/Effort Statistics

Data Substructure Name: Detailed Catch/Effort Data for Scotia-Fundy
Region (1978)

Data Element Identifiers:

Element Name : Inshore-Offshore Flag
Aliases : Flag
Program Mnemonic : Flag
Field Number : 12

Description:

The value in this field is a character indicating whether or not the record is for an offshore or inshore vessel. The characters are:

Inshore Vessel: ' '
Offshore Vessel: '-'

Specifications:

Data Type : Coded
Code Reference Table : See Above
Internal Representation : A1
Position : 29
Range of Values : ' ', '-'
Typical Values : ' '

Revision History:

Date of Original and Author :
Date of Latest Modification and Author:

Notes:

Data Structure Name: Commercial Catch/Effort Statistics

Data Substructure Name: Detailed Catch/Effort Data for Scotia-Fundy Region (1978)

Data Element Identifiers:

Element Name : NAFO Division of Capture
Aliases : Division
Program Mnemonic : Div
Field Number : 13

Description:

The value in this field is the NAFO Division, in alphanumeric representation, from which the landings reported on this record were taken. The field is applicable for both inshore and offshore vessels.

Specifications:

Data Type : Coded
Code Reference Table : Figure H.9
Internal Representation : A3
Position : 30-32
Range of Values : See Figure H.9
Typical Values : '4X'

Revision History:

Date of Original and Author :
Date of Latest Modification and Author:

Notes:

Data Structure Name: Commercial Catch/Effort Statistics

Data Substructure Name: Detailed Catch/Effort Data for Scotia-Fundy
Region (1978)

Data Element Identifiers:

Element Name : Class of Document
Aliases : Class
Program Mnemonic : Class
Field Number : 14

Description:

The code in this field represents the availability of effort data for the trip represented by this record. All inshore records will have a blank (read as \emptyset) in this field. Also the class will depend on the vessel type (indicated by gear code (Field 11)).

Specifications:

Data Type : Coded
Code Reference Table : Table H.7
Internal Representation : I1
Position : 33
Range of Values : \emptyset -9
Typical Values : 1

Revision History:

Date of Original and Author :
Date of Latest Modification and Author:

Notes:

Data Structure Name: Commercial Catch/Effort Statistics

Data Substructure Name: Detailed Catch/Effort Data for Scotia-Fundy
Region (1978)

Data Element Identifiers:

Element Name : Tenths of Trip
Aliases : Tenths
Program Mnemonic : Ten
Field Number : 15

Description:

This field contains the fraction of the trip's total effort, based on hours or lines fished (Field 18), that was expended in the Unit Area (Field 27) given on this record. Thus if a vessel spent 30 hours of a 150 hour trip fishing in 4Xm, this field would contain the value $30/150 = 0.2$. All values are rounded to nearest whole number.

Specifications:

Data Type : Uncoded
Code Reference Table : -
Internal Representation : F2.1
Position : 34-35
Range of Values : 0.1-1.0
Typical Values : 0.5

Revision History:

Date of Original and Author :
Date of Latest Modification and Author:

Notes:

1. This field only applies to data for offshore vessels.

Data Structure Name: Commercial Catch/Effort Statistics

Data Substructure Name: Detailed Catch/Effort Data for Scotia-Fundy
Region (1978)

Data Element Identifiers:

Element Name : Days at Sea
Aliases : Day at Sea
Program Mnemonic : Sea
Field Number : 16

Description:

The value in this field is the port to port days at sea, to the nearest 0.5 days. In the case of split trips, the days at sea are those expended in the Unit Area given in Field 27. In all cases, fishing and steaming time are combined in those Unit Areas fished at the start and end of a trip. No effort is available for inshore boats. In the case where the logs are undecipherable, this field is left blank.

Specifications:

Data Type : Uncoded
Code Reference Table : -
Internal Representation : F3.1
Position : 36-38
Range of Values : 01.0-41.0
Typical Values : 10.0

Revision History:

Date of Original and Author :
Date of Latest Modification and Author:

Notes:

Data Structure Name: Commercial Catch/Effort Statistics

Data Substructure Name: Detailed Catch/Effort Data for Scotia-Fundy
Region (1978)

Data Element Identifiers:

Element Name : Days Fished
Aliases : Days Fished
Program Mnemonic : Days
Field Number : 17

Description:

The value in this field is the days fished, to the nearest day. In the case of split trips, the days fished are those expended in the Unit Areas given in Field 27. No effort is available for inshore boats. In the case where the logs are undecipherable, this field is left blank.

Specifications:

Data Type : Uncoded
Code Reference Table : -
Internal Representation : I2
Position : 39-40
Range of Values : 01-41
Typical Values : 6

Revision History:

Date of Original and Author :
Date of Latest Modification and Author:

Notes:

Data Structure Name: Commercial Catch/Effort Statistics

Data Substructure Name: Detailed Catch/Effort Data for Scotia-Fundy
Region (1978)

Data Element Identifiers:

Element Name : Hours or Lines Fished
Aliases : Hours/Lines
Program Mnemonic : Hours
Field Number : 18

Description:

The value in this field is the hours or lines fished to the nearest hour or line. In the case of split trips, this value applies only to the Unit Area given in Field 27. In the case where the logs are undecipherable, this field is left blank. No effort is available for inshore boats.

Specifications:

Data Type : Uncoded
Code Reference Table : -
Internal Representation : 15
Position : 41-45
Range of Values : -
Typical Values : -

Revision History:

Date of Original and Author :
Date of Latest Modification and Author:

Notes:

Data Structure Name: Commercial Catch/Effort Statistics

Data Substructure Name: Detailed Catch/Effort Data for Scotia-Fundy
Region (1978)

Data Element Identifiers:

Element Name : Trip Card Code
Aliases : Card Code
Program Mnemonic : Card
Field Number : 19

Description:

The character in this field delimits a set of records composing a trip. The first record of a trip keypunched is keyed with a '-' in this field. All subsequent records for the same trip are keyed with a '0' in this field. A small percentage of records within a year have undefinable codes ('A' - 'Z') and thus decrease the utility of this field.

Specifications:

Data Type : Coded
Code Reference Table : See Above
Internal Representation : A1
Position : 46
Range of Values : '-', '0'
Typical Values :

Revision History:

Date of Original and Author :
Date of Latest Modification and Author:

Notes:

Data Structure Name: Commercial Catch/Effort Statistics

Data Substructure Name: Detailed Catch/Effort Data for Scotia-Fundy
Region (1978)

Data Element Identifiers:

Element Name : Species Code
Aliases : Species Caught
Program Mnemonic : Species
Field Number : 20

Description:

The value in this field is the code for the species associated with the landings reported on this record.

Specifications:

Data Type : Coded
Code Reference Table : Table H.3
Internal Representation : I3
Position : 47-49
Range of Values : 100-907
Typical Values : 110

Revision History:

Date of Original and Author :
Date of Latest Modification and Author:

Notes:

Data Structure Name: Commercial Catch/Effort Statistics

Data Substructure Name: Detailed Catch/Effort Data for Scotia-Fundy
Region (1978)

Data Element Identifiers:

Element Name : Market Category
Aliases : Market
Program Mnemonic : Mark
Field Number : 21

Description:

The value in this field is a code representing the market category of the landings of the species given on this record.

Specifications:

Data Type : Coded
Code Reference Table : Table H.8
Internal Representation : I1
Position : 50
Range of Values : 0-9
Typical Values : 1

Revision History:

Date of Original and Author :
Date of Latest Modification and Author:

Notes:

Data Structure Name: Commercial Catch/Effort Statistics

Data Substructure Name: Detailed Catch/Effort Data for Scotia-Fundy
Region (1978)

Data Element Identifiers:

Element Name : Condition Landed
Aliases : Condition
Program Mnemonic : Cond
Field Number : 22

Description:

The value in this field represents the condition of the landings for the species represented by this record.

Specifications:

Data Type : Coded
Code Reference Table : Table H.9
Internal Representation : I1
Position : 51
Range of Values : 1-9
Typical Values : 1

Revision History:

Date of Original and Author :
Date of Latest Modification and Author:

Notes:

Data Structure Name: Commercial Catch/Effort Statistics

Data Substructure Name: Detailed Catch/Effort Data for Scotia-Fundy
Region (1978)

Data Element Identifiers:

Element Name : Weight of Landing
Aliases : Weight in Pounds
Program Mnemonic : Pound
Field Number : 23

Description:

The value in this field is the dockside weight, to the nearest pound, of the species landed by the trip represented by this record. The market category and condition are indicated in Fields 21 and 22. In the case of split trips the landings only apply to the Unit area designed by field 27. This field is used to calculate round and common landed weights provided in Fields 26 and 24.

Specifications:

Data Type : Uncoded
Code Reference Table : -
Internal Representation : I9
Position : 52-60
Range of Values : 000000001-999999999
Typical Values : 100000

Revision History:

Date of Original and Author :
Date of Latest Modification and Author:

Notes:

Data Structure Name: Commercial Catch/Effort Statistics

Data Substructure Name: Detailed Catch/Effort Data for Scotia-Fundy
Region (1978)

Data Element Identifiers:

Element Name : Common Landed Weight
Aliases : Common Weight
Program Mnemonic : Comm
Field Number : 24

Description:

The value in this field is the common landed weight, to the nearest pound, of the species landed by the trip represented by this record. This value is obtained by multiplying the value in Field 23 by the appropriate conversion factor given in Table H.10. In the case of split trips, the landings only apply to the Unit Area designated by Field 27.

Specifications:

Data Type : Uncoded
Code Reference Table : Table H.10
Internal Representation : I9
Position : 61-69
Range of Values : 000000001-999999999
Typical Values : 100000

Revision History:

Date of Original and Author :
Date of Latest Modification and Author:

Notes:

Data Structure Name: Commercial Catch/Effort Statistics

Data Substructure Name: Detailed Catch/Effort Data for Scotia-Fundy
Region (1978)

Data Element Identifiers:

Element Name : Value of Landed Catch
Aliases : Value
Program Mnemonic : Value
Field Number : 25

Description:

The value in this field is the total amount, to the nearest dollar, paid for the landings of the species caught on the trip. Where a number of conditions are involved, in a split trip an average price-per-pound is calculated as $\Sigma \text{wt} / \Sigma \text{value}$ and the total weight for the Unit Area is multiplied by this figure to obtain in value.

Specifications:

Data Type : Uncoded
Code Reference Table : -
Internal Representation : I7
Position : 70-76
Range of Values : 0000001-9999999
Typical Values : 10000

Revision History:

Date of Original and Author :
Date of Latest Modification and Author:

Notes:

Data Structure Name: Commercial Catch/Effort Statistics

Data Substructure Name: Detailed Catch/Effort Data for Scotia-Fundy
Region (1978)

Data Element Identifiers:

Element Name : Weight of Landings (kg)
Aliases : Weight Caught
Program Mnemonic : Round
Field Number : 26

Description:

The value in this field is the round weight to the nearest kg, of the species landed by the trip represented by this record. In the case of split trips, the landings only apply to the Unit Area designated by Field 27. The value is calculated by multiplying the value in Field 23 by the appropriate conversion factor given in Table H.10.

Specifications:

Data Type : Uncoded
Code Reference Table : -
Internal Representation : I9
Position : 77-85
Range of Values : 000000001-999999999
Typical Values : 100000

Revision History:

Date of Original and Author :
Date of Latest Modification and Author:

Notes:

Data Structure Name: Commercial Catch/Effort Statistics

Data Substructure Name: Detailed Catch/Effort Data for Scotia-Fundy Region (1978)

Data Element Identifiers:

Element Name : Unit Area of Capture
Aliases : Unit Area
Program Mnemonic : Unit
Field Number : 27

Description:

The value in this field represents the Unit Area of capture of the species landed by the trip represented by this record. The field applies to both inshore and offshore vessels. The codes are numeric. Conversion to the alphanumeric equivalent can be conducted through reference to Table H.6.

Specifications:

Data Type : Coded
Code Reference Table : Table H.6, Figure H.7
Internal Representation : A3
Position : 86-88
Range of Values : 000-680
Typical Values : 463

Revision History:

Date of Original and Author :
Date of Latest Modification and Author:

Notes:

Data Structure Name: Commercial Catch/Effort Statistics

Data Substructure Name: Detailed Catch/Effort Data for Scotia-Fundy Region (1978)

Data Element Identifiers:

Element Name : Day of Landing
Aliases : Day
Program Mnemonic : Day
Field Number : 28

Description:

The value in this field is the day of the month (Field 5) that the catch reported on this record was landed. The value 99 indicates missing information.

Specifications:

Data Type : Uncoded
Code Reference Table : -
Internal Representation : 12
Position : 89-90
Range of Values : 01-99
Typical Values : 15

Revision History:

Date of Original and Author :
Date of Latest Modification and Author:

Notes:

Data Structure Name: Commercial Catch/Effort Statistics

Data Substructure Name: Detailed Catch/Effort Data for Scotia-Fundy
Region (1978)

Data Element Identifiers:

Element Name : Weir Number
Aliases : Weir
Program Mnemonic : Weir
Field Number : 29

Description:

The value in this field is the weir registration number. The weir number code file can be obtained from Statistics Division, Halifax. The value 0000 is for non-weir landings. The value 9999 is for unknown weir numbers.

Specifications:

Data Type : Coded
Code Reference Table : Statistics Division, Halifax
Internal Representation : I4
Position : 91-94
Range of Values : 0000-9999
Typical Values : 0313

Revision History:

Date of Original and Author :
Date of Latest Modification and Author:

Notes:

Data Structure Name: Commercial Catch/Effort Statistics

Data Substructure Name: Detailed Catch/Effort Data for Scotia-Fundy
Region (1978)

Data Element Identifiers:

Element Name : CFV Number
Aliases : CFV Number
Program Mnemonic : CFV
Field Number : 30

Description:

The value in this field is the Canadian Fishing Vessel number, including a check digit. The CFV code file is available from Statistics Division, Halifax.

Specifications:

Data Type : Coded
Code Reference Table : Statistics Division, Halifax
Internal Representation : I7
Position : 95-101
Range of Values : 0000000-9999999
Typical Values : 0052746

Revision History:

Date of Original and Author :
Date of Latest Modification and Author:

Notes:

Data Structure Name: Commercial Catch/Effort Statistics

Data Substructure Name: Detailed Catch/Effort Data for Scotia-Fundy
Region (1978)

Data Element Identifiers:

Element Name : Purchase Slip Number
Aliases : Slip Number
Program Mnemonic : Slip
Field Number : 31

Description:

The value in this field is a six digit number uniquely identifying the purchase slip from which the catch data on this record was taken. It is unique within year for all vessels.

Specifications:

Data Type : Uncoded
Code Reference Table : -
Internal Representation : I6
Position : 102-107
Range of Values : 000001-999999
Typical Values : 002153

Revision History:

Date of Original and Author :
Date of Latest Modification and Author:

Notes:

Data Structure Name: Commercial Catch/Effort Statistics

Data Substructure Name: Detailed Catch/Effort Data for Scotia-Fundy
Region (1978)

Data Element Identifiers:

Element Name : Offshore Vessel Code
Aliases : Vessel ID, Vessel Code
Program Mnemonic : OVC
Field Number : 35

Description:

A full description of the OVC is attached.

Specifications:

Data Type : Coded
Code Reference Table : Statistics Division, DFO, Halifax
Internal Representation : I4
Position : 112-115
Range of Values : 0000-9999
Typical Values : 3419

Revision History:

Date of Original and Author :
Date of Latest Modification and Author:

Notes:

This field contains a code which uniquely identifies a vessel in a particular year. It is important to note that if a vessel leaves the fleet, the code can be reassigned to a new vessel. Thus the code is not uniquely assigned. The first column in the field contains a code for the tonnage class of the vessel. These are:

<u>Code</u>	<u>Gross Tonnage</u>
0+1	0-25.5
2	25.5-49.9
3	50-149.9
4	150-449.9
5	500-999.9
6	1000-1999.9
7	2000 and up

The last three columns contain a number associated with a vessel within the identified tonnage class. An index of these is available from Statistic Division, DFO, Halifax.

Code 0200 indicates an unknown vessel.

Inshore vessels are indicated by 0000.

Data Structure Name: Commercial Catch/Effort Statistics

Data Substructure Name: Detailed Catch/Effort Data for Scotia-Fundy
Region (1978)

Data Element Identifiers:

Element Name : Trip Number
Aliases : Trip
Program Mnemonic : Trip
Field Number : 36

Description:

This field contains a number which is unique for each trip of any vessel during one year. It is not necessarily consecutive and contiguous. The assignment is done automatically upon data entry. The value 0000 indicates the trip of an inshore vessel.

Specifications:

Data Type : Non-coded
Code Reference Table : -
Internal Representation : I4
Position : 116-119
Range of Values : 0000-9999
Typical Values : 50

Revision History:

Date of Original and Author :
Date of Latest Modification and Author:

Notes:

Appendix E. Data specifications for commercial catch/effort statistics: Detailed Catch/Effort Data for Scotia-Fundy Region (1979-82).

Characters are present in the following columns:

11-12, 25-26.

The identity of these data could not be determined and thus specifications for these fields are not provided. All numeric fields are right-justified and may or may not be zero filled. All alphanumeric fields are left-justified and blank filled.

The character length of each record is 130 with blanks in columns 128-130.

Summary Data Specifications for Commercial
Catch/Effort Statistics

Detailed Catch/Effort Data for Scotia-Fundy Region (1979-82)

Field	Internal Representation	Position	Element Name
1	I2	1-2	Tabulation Month (See Appendix B, Field 8)
2	I1	3	Fishing Depth Code
3	I5	4-8	Lobster Boat CFV Number
4	I2	9-10	Lobster Statistical District
5	I2	13-14	Month of Landing
6	I2	15-16	Year of Landing
7	I1	17	Province of Landing
8	I2	18-19	Statistical District of Landing
9	I2	20-21	Community of Landing
10	I3	22-24	Main Species Code
11	I2	27-28	Gear Code
12	A1	29	Inshore-Offshore Flag
13	A3	30-32	NAFO Division of Capture
14	I1	33	Class of Document
15	F2.1	34-35	Tenths of Trips
16	F3.1	36-38	Days at Sea
17	I2	39-40	Days Fished
18	I5	41-45	Hours or Lines Fished
19	A1	46	Trip Card Code
20	I3	47-49	Species Code
21	I1	50	Market Category

Summary Data Specifications for Commercial
Catch/Effort Statistics

Detailed Catch/Effort Data for Scotia-Fundy Region (1979-82)

Field	Internal Representation	Position	Element Name
22	I1	51	Condition Landed
23	I9	52-60	Weight of Landing (lbs)
24	I9	61-69	Common Landed Weight
25	I7	70-76	Value of Landed Catch
26	I9	77-85	Weight of Landing (kg)
27	A3	86-88	Unit Area of Capture
28	I2	89-90	Day of Landing
29	I4	91-94	Weir Number
30	I7	95-101	CFV Number
31	A5	102-106	Batch Number (See Appendix B, Field 34)
32	I6	107-112	Purchase Slip Number
33	I2	113-114	Item Number (See Appendix B, Field 27)
34	A1	115	Record Type (See Appendix B, Field 2)
35	A1	116	Update Code (See Appendix B, Field 3)
36	I4	117-120	Offshore Vessel Code
37	I4	121-124	Trip Number
38	I3	125-127	Data Entry Date (See Appendix B, Field 7)

Data Structure Name: Commercial Catch/Effort Statistics

Data Substructure Name: Detailed Catch/Effort Data for Scotia-Fundy
Region (1979-82)

Data Element Identifiers:

Element Name : Fishing Depth Code
Aliases : Depth
Program Mnemonic : Depth
Field Number : 2

Description:

The value in this field is a code representing the depth range in fathoms fished during the trip represented by this record. It is only applicable to offshore vessels. In the case of split trips, this range is that observed in the Unit Area of capture, designated by Field 27.

Specifications:

Data Type : Coded
Code Reference Table : Table H.5
Internal Representation : I1
Position : 3
Range of Values : 0-9
Typical Values : 4

Revision History:

Date of Original and Author :
Date of Latest Modification and Author:

Notes:

Data Structure Name: Commercial Catch/Effort Statistics

Data Substructure Name: Detailed Catch/Effort Data for Scotia-Fundy
Region (1979-82)

Data Element Identifiers:

Element Name : Lobster Boat CFV Number
Aliases : Lobster Boat VID
Program Mnemonic : Lobvid
Field Number : 3

Description:

The value in this field is a code uniquely identifying a lobster boat. The vessel code file can be obtained from Statistics Division, Halifax. A value of 00000 is present for non-lobster boat trips.

Specifications:

Data Type : Coded
Code Reference Table : Statistics Division, Halifax
Internal Representation : I5
Position : 4-8
Range of Values : 00000-99999
Typical Values : 29320

Revision History:

Date of Original and Author :
Date of Latest Modification and Author:

Notes:

Data Structure Name: Commercial Catch/Effort Statistics

Data Substructure Name: Detailed Catch/Effort Data for Scotia-Fundy
Region (1979-82)

Data Element Identifiers:

Element Name : Lobster Statistical District
Aliases : Lobster District
Program Mnemonic : Lobdis
Field Number : 4

Description:

The value in this field is a code representing the Statistical District of landing of the lobster represented by this record. A value of 00 is present for non-lobster boat trips.

Specifications:

Data Type : Coded
Code Reference Table : Table H.11 and Figure H.10
Internal Representation : I2
Position : 9-10
Range of Values :
Typical Values : 05

Revision History:

Date of Original and Author :
Date of Latest Modification and Author:

Notes:

Data Structure Name: Commercial Catch/Effort Statistics

Data Substructure Name: Detailed Catch/Effort Data for Scotia-Fundy
Region (1979-82)

Data Element Identifiers:

Element Name : Month of Landing
Aliases : Month
Program Mnemonic : Month
Field Number : 5

Description:

This field contains a value indicating the month of the year in which the landing for the trip, represented by the record, was made.

Specifications:

Data Type : Coded
Code Reference Table : -
Internal Representation : I2
Position : 13-14
Range of Values : 01-12
Typical Values : 06

Revision History:

Date of Original and Author :
Date of Latest Modification and Author:

Notes:

Data Structure Name: Commercial Catch/Effort Statistics

Data Substructure Name: Detailed Catch/Effort Data for Scotia-Fundy
Region (1979-82)

Data Element Identifiers:

Element Name : Year of Landing
Aliases : Year
Program Mnemonic : Year
Field Number : 6

Description:

The value in this field is the year in which the landing for the trip represented by this record was made.

Specifications:

Data Type : Uncoded
Code Reference Table : -
Internal Representation : I2
Position : 15-16
Range of Values : 78
Typical Values : 78

Revision History:

Date of Original and Author :
Date of Latest Modification and Author:

Notes:

Data Structure Name: Commercial Catch/Effort Statistics

Data Substructure Name: Detailed Catch/Effort Data for Scotia-Fundy
Region (1979-82)

Data Element Identifiers:

Element Name : Province of Landing
Aliases : Province
Program Mnemonic : Prov.
Field Number : 7

Description:

The value in this field indicates the province in which the catch was landed.

Specifications:

Data Type : Coded
Code Reference Table : Table H.1
Internal Representation : I1
Position : 17
Range of Values : 1-5
Typical Values : 1

Revision History:

Date of Original and Author :
Date of Latest Modification and Author:

Notes:

Data Structure Name: Commercial Catch/Effort Statistics

Data Substructure Name: Detailed Catch/Effort Data for Scotia-Fundy
Region (1979-82)

Data Element Identifiers:

Element Name : Statistical District of Landing
Aliases : Statistical District
Program Mnemonic : Dist
Field Number : 8

Description:

The value in this field identifies the Statistical District in which the landings were made. The value is unique within Province (Field 7). The attached map shows the Statistical District for the Atlantic Zone.

Specifications:

Data Type : Coded
Code Reference Table : Figure H.7
Internal Representation : I2
Position : 18-19
Range of Values : 01-96
Typical Values : 28

Revision History:

Date of Original and Author :
Date of Latest Modification and Author:

Notes:

Data Structure Name: Commercial Catch/Effort Statistics

Data Substructure Name: Detailed Catch/Effort Data for Scotia-Fundy
Region (1979-82)

Data Element Identifiers:

Element Name : Community of Landing
Aliases : Community, Port
Program Mnemonic : Comm.
Field Number : 9

Description:

The value in this field uniquely identifies the community in which the landing was sold. It is unique within province and Statistical District. Listings of these can be obtained from regional statistics offices. Those for Nova Scotia, New Brunswick, and P.E.I. are attached.

Specifications:

Data Type : Coded
Code Reference Table : Table H.2
Internal Representation : I2
Position : 20-21
Range of Values : 01-99
Typical Values : 05

Revision History:

Date of Original and Author :
Date of Latest Modification and Author:

Notes:

Data Structure Name: Commercial Catch/Effort Statistics

Data Substructure Name: Detailed Catch/Effort Data for Scotia-Fundy
Region (1979-82)

Data Element Identifiers:

Element Name : Main Species Code
Aliases : Main Species
Program Mnemonic : Main
Field Number : 10

Description:

The value in this field is the code for the species which represents the greatest proportion of the catch for the trip in question. In the case of split trips, the code is for the species which represents the greatest proportion of the catch in the Unit Area identified in Field 27. This field is not applicable to inshore records.

Specifications:

Data Type : Coded
Code Reference Table : Table H.3
Internal Representation : I3
Position : 22-24
Range of Values : 000-907
Typical Values : 110

Revision History:

Date of Original and Author :
Date of Latest Modification and Author:

Notes:

Data Structure Name: Commercial Catch/Effort Statistics

Data Substructure Name: Detailed Catch/Effort Data for Scotia-Fundy
Region (1979-82)

Data Element Identifiers:

Element Name : Gear Code
Aliases : Gear
Program Mnemonic : Gear
Field Number : 11

Description:

The value in this field is the code representing the gear used to catch the landings reported for the trip in question.

Specifications:

Data Type : Coded
Code Reference Table : Table H.4
Internal Representation : I2
Position : 27-28
Range of Values : 01-90
Typical Values : 11

Revision History:

Date of Original and Author :
Date of Latest Modification and Author:

Notes:

Data Structure Name: Commercial Catch/Effort Statistics

Data Substructure Name: Detailed Catch/Effort Data for Scotia-Fundy Region (1979-82)

Data Element Identifiers:

Element Name : Inshore-Offshore Flag
Aliases : Flag
Program Mnemonic : Flag
Field Number : 12

Description:

The value in this field is a character indicating whether or not the record is for an offshore or inshore vessel. The characters are:

Inshore Vessel: 'I'
Offshore Vessel: 'O'

Specifications:

Data Type : Coded
Code Reference Table : See Above
Internal Representation : A1
Position : 29
Range of Values : 'I', 'O'
Typical Values : 'I'

Revision History:

Date of Original and Author :
Date of Latest Modification and Author:

Notes:

Data Structure Name: Commercial Catch/Effort Statistics

Data Substructure Name: Detailed Catch/Effort Data for Scotia-Fundy Region (1979-82)

Data Element Identifiers:

Element Name : NAFO Division of Capture
Aliases : Division
Program Mnemonic : Div.
Field Number : 13

Description:

The value in this field is the NAFO Division, in alphanumeric representation, from which the landings reported on this record were taken. The field is applicable for both inshore and offshore vessels.

Specifications:

Data Type : Coded
Code Reference Table : Figure H.9
Internal Representation : A3
Position : 30-32
Range of Values : See Figure H.9
Typical Values : '4X'

Revision History:

Date of Original and Author :
Date of Latest Modification and Author:

Notes:

Data Structure Name: Commercial Catch/Effort Statistics

Data Substructure Name: Detailed Catch/Effort Data for Scotia-Fundy
Region (1979-82)

Data Element Identifiers:

Element Name : Class of Document
Aliases : Class
Program Mnemonic : Class
Field Number : 14

Description:

The code in this field represents the availability of effort data for the trip represented by this record. All inshore records will have a blank (read as \emptyset) in this field. Also the class will depend on the vessel type (indicated by gear code (Field 11)).

Specifications:

Data Type : Coded
Code Reference Table : Table H.7
Internal Representation : I1
Position : 33
Range of Values : \emptyset -9
Typical Values : 1

Revision History:

Date of Original and Author :
Date of Latest Modification and Author:

Notes:

Data Structure Name: Commercial Catch/Effort Statistics

Data Substructure Name: Detailed Catch/Effort Data for Scotia-Fundy
Region (1979-82)

Data Element Identifiers:

Element Name : Tenths of Trip
Aliases : Tenths
Program Mnemonic : Ten
Field Number : 15

Description:

This field contains the fraction of the trip's total effort, based on hours or lines fished (Field 18), that was expended in the Unit Area (Field 27) given on this record. Thus if a vessel spent 30 hours of a 150 hour trip fishing in 4Xm, this field would contain the value 30/150 = 0.2. All values are rounded to nearest whole number.

Specifications:

Data Type : Uncoded
Code Reference Table : -
Internal Representation : F2.1
Position : 34-35
Range of Values : 0.1-1.0
Typical Values : 0.5

Revision History:

Date of Original and Author :
Date of Latest Modification and Author:

Notes:

1. This field only applies to data for offshore vessels.

Data Structure Name: Commercial Catch/Effort Statistics

Data Substructure Name: Detailed Catch/Effort Data for Scotia-Fundy Region (1979-82)

Data Element Identifiers:

Element Name : Days at Sea
Aliases : Days at Sea
Program Mnemonic : Sea
Field Number : 16

Description:

The value in this field is the port to port days at sea, to the nearest 0.5 days. In the case of split trips, the days at sea are those expended in the Unit Area given in Field 27. In all cases, fishing and steaming time are combined in those Unit Areas fished at the start and end of a trip. No effort is available for inshore boats. In the case where the logs are undecipherable, this field is left blank.

Specifications:

Data Type : Uncoded
Code Reference Table : -
Internal Representation : F3.1
Position : 36-38
Range of Values : 01.0-41.0
Typical Values : 10.0

Revision History:

Date of Original and Author :
Date of Latest Modification and Author:

Notes:

Data Structure Name: Commercial Catch/Effort Statistics

Data Substructure Name: Detailed Catch/Effort Data for Scotia-Fundy
Region (1979-82)

Data Element Identifiers:

Element Name : Days Fished
Aliases : Days Fished
Program Mnemonic : Days
Field Number : 17

Description:

The value in this field is the days fished, to the nearest day. In the case of split trips, the days fished are those expended in the Unit Areas given in Field 27. No effort is available for inshore boats. In the case where the logs are undecipherable, this field is left blank.

Specifications:

Data Type : Uncoded
Code Reference Table : -
Internal Representation : I2
Position : 39-40
Range of Values : 01-41
Typical Values : 6

Revision History:

Date of Original and Author :
Date of Latest Modification and Author:

Notes:

Data Structure Name: Commercial Catch/Effort Statistics

Data Substructure Name: Detailed Catch/Effort Data for Scotia-Fundy
Region (1979-82)

Data Element Identifiers:

Element Name : Hours or Lines Fished
Aliases : Hours/Lines
Program Mnemonic : Hours
Field Number : 18

Description:

The value in this field is the hours or lines fished to the nearest hour or line. In the case of split trips, this value applies only to the Unit Area given in Field 27. In the case where the logs are undecipherable, this field is left blank. No effort is available for inshore boats.

Specifications:

Data Type : Uncoded
Code Reference Table : -
Internal Representation : I5
Position : 41-45
Range of Values : -
Typical Values : -

Revision History:

Date of Original and Author :
Date of Latest Modification and Author:

Notes:

Data Structure Name: Commercial Catch/Effort Statistics

Data Substructure Name: Detailed Catch/Effort Data for Scotia-Fundy
Region (1979-82)

Data Element Identifiers:

Element Name : Trip Card Code
Aliases : Card Code
Program Mnemonic : Card
Field Number : 19

Description:

The character in this field delimits a set of records composing a trip. The first record of a trip keypunched is keyed with a '-' in this field. All subsequent records for the same trip are keyed with a '0' in this field. A small percentage of records within a year have undefinable codes ('A' - 'Z') and thus decrease the utility of this field.

Specifications:

Data Type : Coded
Code Reference Table : See Above
Internal Representation : A1
Position : 46
Range of Values : '-', '0'
Typical Values :

Revision History:

Date of Original and Author :
Date of Latest Modification and Author:

Notes:

Data Structure Name: Commercial Catch/Effort Statistics

Data Substructure Name: Detailed Catch/Effort Data for Scotia-Fundy
Region (1979-82)

Data Element Identifiers:

Element Name : Species Code
Aliases : Species Caught
Program Mnemonic : Species
Field Number : 20

Description:

The value in this field is the code for the species associated with the landings reported on this record.

Specifications:

Data Type : Coded
Code Reference Table : Table H.3
Internal Representation : I3
Position : 47-49
Range of Values : 100-907
Typical Values : 110

Revision History:

Date of Original and Author :
Date of Latest Modification and Author:

Notes:

Data Structure Name: Commercial Catch/Effort Statistics

Data Substructure Name: Detailed Catch/Effort Data for Scotia-Fundy
Region (1979-82)

Data Element Identifiers:

Element Name : Market Category
Aliases : Market
Program Mnemonic : Mark
Field Number : 21

Description:

The value in this field is a code representing the market category of the landings of the species given on this record.

Specifications:

Data Type : Coded
Code Reference Table : Table H.8
Internal Representation : I1
Position : 50
Range of Values : 0-9
Typical Values : 1

Revision History:

Date of Original and Author :
Date of Latest Modification and Author:

Notes:

Data Structure Name: Commercial Catch/Effort Statistics

Data Substructure Name: Detailed Catch/Effort Data for Scotia-Fundy
Region (1979-82)

Data Element Identifiers:

Element Name : Condition Landed
Aliases : Condition
Program Mnemonic : Cond
Field Number : 22

Description:

The value in this field represents the condition of the landings for the species represented by this record.

Specifications:

Data Type : Coded
Code Reference Table : Table H.9
Internal Representation : I1
Position : 51
Range of Values : 1-9
Typical Values : 1

Revision History:

Date of Original and Author :
Date of Latest Modification and Author:

Notes:

Data Structure Name: Commercial Catch/Effort Statistics

Data Substructure Name: Detailed Catch/Effort Data for Scotia-Fundy
Region (1979-82)

Data Element Identifiers:

Element Name : Weight of Landing
Aliases : Weight in Pounds
Program Mnemonic : Pound
Field Number : 23

Description:

The value in this field is the dockside weight, to the nearest pound, of the species landed by the trip represented by this record. The market category and condition are indicated in Fields 21 and 22. In the case of split trips the landings only apply to the Unit area designed by Field 27. This field is used to calculate round and common landed weights provided in Fields 26 and 24.

Specifications:

Data Type : Uncoded
Code Reference Table : -
Internal Representation : I9
Position : 52-60
Range of Values : 000000001-999999999
Typical Values : 100000

Revision History:

Date of Original and Author :
Date of Latest Modification and Author:

Notes:

Data Structure Name: Commercial Catch/Effort Statistics

Data Substructure Name: Detailed Catch/Effort Data for Scotia-Fundy
Region (1979-82)

Data Element Identifiers:

Element Name : Common Landed Weight
Aliases : Common Weight
Program Mnemonic : Comm
Field Number : 24

Description:

The value in this field is the common landed weight, to the nearest pound, of the species landed by the trip represented by this record. This value is obtained by multiplying the value in Field 23 by the appropriate conversion factor given in Table H.10. In the case of split trips, the landings only apply to the Unit Area designated by Field 27.

Specifications:

Data Type : Uncoded
Code Reference Table : Table H.10
Internal Representation : I9
Position : 61-69
Range of Values : 000000001-999999999
Typical Values : 100000

Revision History:

Date of Original and Author :
Date of Latest Modification and Author:

Notes:

Data Structure Name: Commercial Catch/Effort Statistics

Data Substructure Name: Detailed Catch/Effort Data for Scotia-Fundy Region (1979-82)

Data Element Identifiers:

Element Name : Value of Landed Catch
Aliases : Value
Program Mnemonic : Value
Field Number : 25

Description:

The value in this field is the total amount, to the nearest dollar, paid for the landings of the species caught on the trip. Where a number of conditions are involved, in a split trip an average price-per-pound is calculated as $\Sigma \text{wt} / \Sigma \text{value}$ and the total weight for the Unit Area is multiplied by this figure to obtain in value.

Specifications:

Data Type : Uncoded
Code Reference Table : -
Internal Representation : I7
Position : 70-76
Range of Values : 0000001-9999999
Typical Values : 10000

Revision History:

Date of Original and Author :
Date of Latest Modification and Author:

Notes:

Data Structure Name: Commercial Catch/Effort Statistics

Data Substructure Name: Detailed Catch/Effort Data for Scotia-Fundy
Region (1979-82)

Data Element Identifiers:

Element Name : Weight of Landings (kg)
Aliases : Weight Caught
Program Mnemonic : Round
Field Number : 26

Description:

The value in this field is the round weight to the nearest kg, of the species landed by the trip represented by this record. In the case of split trips, the landings only apply to the Unit Area designated by Field 27. The value is calculated by multiplying the value in Field 23 by the appropriate conversion factor given in Table H.10.

Specifications:

Data Type : Uncoded
Code Reference Table : -
Internal Representation : I9
Position : 77-85
Range of Values : 000000001-999999999
Typical Values : 100000

Revision History:

Date of Original and Author :
Date of Latest Modification and Author:

Notes:

Data Structure Name: Commercial Catch/Effort Statistics

Data Substructure Name: Detailed Catch/Effort Data for Scotia-Fundy
Region (1979-82)

Data Element Identifiers:

Element Name : Unit Area of Capture
Aliases : Unit Area
Program Mnemonic : Unit
Field Number : 27

Description:

The value in this field represents the Unit Area of capture of the species landed by the trip represented by this record. The field applies to both inshore and offshore vessels. The codes are alphanumeric.

Specifications:

Data Type : Coded
Code Reference Table : Table H.12, Figure H.8
Internal Representation : A3
Position : 86-88
Range of Values : See Table H.12
Typical Values : 463

Revision History:

Date of Original and Author :
Date of Latest Modification and Author:

Notes:

Data Structure Name: Commercial Catch/Effort Statistics

Data Substructure Name: Detailed Catch/Effort Data for Scotia-Fundy
Region (1979-82)

Data Element Identifiers:

Element Name : Day of Landing
Aliases : Day
Program Mnemonic : Day
Field Number : 28

Description:

The value in this field is the day of the month (Field 5) that the catch reported on this record was landed. The value 99 indicates missing information.

Specifications:

Data Type : Uncoded
Code Reference Table : -
Internal Representation : I2
Position : 89-90
Range of Values : 01-99
Typical Values : 15

Revision History:

Date of Original and Author :
Date of Latest Modification and Author:

Notes:

Data Structure Name: Commercial Catch/Effort Statistics

Data Substructure Name: Detailed Catch/Effort Data for Scotia-Fundy
Region (1979-82)

Data Element Identifiers:

Element Name : Weir Number
Aliases : Weir
Program Mnemonic : Weir
Field Number : 29

Description:

The value in this field is the weir registration number. The weir number code file can be obtained from Statistics Division, Halifax. The value 0000 is for non-weir landings. The value 9999 is for unknown weir numbers.

Specifications:

Data Type : Coded
Code Reference Table : Statistics Division, Halifax
Internal Representation : I4
Position : 91-94
Range of Values : 0000-9999
Typical Values : 0313

Revision History:

Date of Original and Author :
Date of Latest Modification and Author:

Notes:

Data Structure Name: Commercial Catch/Effort Statistics

Data Substructure Name: Detailed Catch/Effort Data for Scotia-Fundy
Region (1979-82)

Data Element Identifiers:

Element Name : CFV Number
Aliases : CFV Number
Program Mnemonic : CFV
Field Number : 30

Description:

The value in this field is the Canadian Fishing Vessel number, including a check digit. The CFV code file is available from Statistics Division, Halifax.

Specifications:

Data Type : Coded
Code Reference Table : Statistics Division, Halifax
Internal Representation : I7
Position : 95-101
Range of Values : 0000000-9999999
Typical Values : 0052746

Revision History:

Date of Original and Author :
Date of Latest Modification and Author:

Notes:

Data Structure Name: Commercial Catch/Effort Statistics

Data Substructure Name: Detailed Catch/Effort Data for Scotia-Fundy
Region (1979-82)

Data Element Identifiers:

Element Name : Purchase Slip Number
Aliases : Slip Number
Program Mnemonic : Slip
Field Number : 32

Description:

The value in this field is a six digit number uniquely identifying the purchase slip from which the catch data on this record was taken. It is unique within year for all vessels.

Specifications:

Data Type : Uncoded
Code Reference Table : -
Internal Representation : I6
Position : 107-112
Range of Values : 000001-999999
Typical Values : 002153

Revision History:

Date of Original and Author :
Date of Latest Modification and Author:

Notes:

Data Structure Name: Commercial Catch/Effort Statistics

Data Substructure Name: Detailed Catch/Effort Data for Scotia-Fundy
Region (1979-82)

Data Element Identifiers:

Element Name : Offshore Vessel Code
Aliases : Vessel ID, Vessel Code
Program Mnemonic : OVC
Field Number : 36

Description:

A full description of the OVC is attached.

Specifications:

Data Type : Coded
Code Reference Table : Statistics Division, DFO, Halifax
Internal Representation : I4
Position : 117-120
Range of Values : 0000-9999
Typical Values : 3419

Revision History:

Date of Original and Author :
Date of Latest Modification and Author:

Notes:

This field contains a code which uniquely identifies a vessel in a particular year. It is important to note that if a vessel leaves the fleet, the code can be reassigned to a new vessel. Thus the code is not uniquely assigned. The first column in the field contains a code for the tonnage class of the vessel. These are:

<u>Code</u>	<u>Gross Tonnage</u>
0+1	0-25.5
2	25.5-49.9
3	50-149.9
4	150-449.9
5	500-999.9
6	1000-1999.9
7	2000 and up

The last three columns contain a number associated with a vessel within the identified tonnage class. An index of these is available from Statistic Division, DFO, Halifax.

Code 0200 indicates an unknown vessel.

Inshore vessels are indicated by 0000.

Data Structure Name: Commercial Catch/Effort Statistics

Data Substructure Name: Detailed Catch/Effort Data for Scotia-Fundy
Region (1979-82)

Data Element Identifiers:

Element Name : Trip Number
Aliases : Trip
Program Mnemonic : Trip
Field Number : 37

Description:

This field contains a number which is unique for each trip of any vessel during one year. It is not necessarily consecutive and contiguous. The assignment is done automatically upon data entry. The value 0000 indicates the trip of an inshore vessel.

Specifications:

Data Type : Non-coded
Code Reference Table : -
Internal Representation : I4
Position : 121-124
Range of Values : 0000-9999
Typical Values : 50

Revision History:

Date of Original and Author :
Date of Latest Modification and Author:

Notes:

Appendix F. Data specifications for commercial catch/effort statistics: Summary Catch Data for Maritimes Region (1967-72).

The following columns contain blank characters:

4-12, 22-26, 30-46, 89-120.

The character length of each record is 120. Field specifications are in Appendix C.

Summary Data Specifications for Commercial
Catch/Effort Statistics

Summary Catch Data for Maritimes Region (1967-72)

Field	Internal Representation	Position	Element Name
1	I2	1-2	Tabulation Month
2	A1	3	Update Code
3	I2	13-14	Month of Landing
4	I2	15-16	Year of Landing
5	I1	17	Province of Purchase
6	I2	18-19	Statistical District of Purchase
7	I2	20-21	Community of Purchase
8	I2	27-28	Gear Code
9	A1	29	Inshore-Offshore Flag
10	I3	47-49	Species Code
11	I1	50	Market Category
12	I1	51	Condition Landed
13	I9	52-60	Weight of Landing (lbs)
14	I9	61-69	Common Landed Weight
15	I7	70-76	Value of Landed Catch
16	I9	77-85	Weight of Landing (kg)
17	A3	86-88	Unit Area of Capture (Inshore)

Appendix G. Data specifications for commercial catch/effort statistics: Summary Catch Data for Scotia-Fundy Region (1973-82).

The following columns contain blank characters:

11-12, 22-26, 30-46, 95-120.

The character length of each record is 120. Field specifications are in Appendices C, D, and E.

Summary Data Specifications for Commercial
Catch/Effort Statistics

Summary Catch Data for Scotia-Fundy Region (1973-82)

Field	Internal Representation	Position	Element Name
1	I2	1-2	Tabulation Month
2	A1	3	Update Code
3	I5	4-8	Lobster Boat DFV Number or Offshore Vessel Code
4	I2	9-10	Lobster Statistical District
5	I2	13-14	Month of Landing
6	I2	15-16	Year of Landing
7	I1	17	Province of Landing
8	I2	18-19	Statistical District of Landing
9	I2	20-21	Community of Landing
10	I2	27-28	Gear Code
11	A1	29	Inshore-Offshore Flag
12	I3	47-49	Species Code
13	I1	50	Market Category
14	I1	51	Condition Landed
15	I9	52-60	Weight of Landing (lbs)
16	I9	61-69	Common Landed Weight
17	I7	70-76	Value of Landed Catch
18	I9	77-85	Value of Landing (kg)
19	A3	86-88	Unit Area of Capture
20	I2	89-90	Day of Landing
21	I4	91-94	Weir Number

Appendix H. List of Tables

<u>Table</u>	<u>Description</u>	<u>Page</u>
H.1	Province of purchase codes	
H.2	Community of purchase codes	
H.3	Species codes	
H.4	Gear codes	
H.5	Fishing depth codes	
H.6	Unit Area numeric and alpanumeric codes	
H.7	Class of document codes	
H.8	Market category codes	
H.9	Condition landed codes	
H.10	Conversion factors for landed weight to live and common weight	
H.11	Lobster statistical district codes	
H.12	Valid alphanumeric NAFO codes for division and Unit Area of capture	

Appendix H. List of Figures

<u>Figure</u>	<u>Description</u>	<u>Page</u>
H.1	Government supplied purchase slip	
H.2	Supplementary purchase slip-A	
H.3	Supplementary purchase slip-B	
H.4	Purchase slip guide	
H.5	Sample log for groundfish species	
H.6	Sample log for pelagic species	
H.7	Statistical districts for Maritime Region, used for catch-effort data analysis	
H.8	Statistical Unit Area for Maritime Region used in catch/effort data analysis	
H.9	ICNAF/NAFO Divisions for Maritime Region	
H.10	Lobster fishing districts for Maritimes, Quebec and Newfoundland	

Table H.1. Province of Purchase codes used in detailed catch/effort data for Scotia-Fundy Region (1979-82).

Province	Code
Nova Scotia	1
New Brunswick	2
Prince Edward Island	3
Quebec	4
Newfoundland	5

Table H2. Community of purchase codes for the detailed catch/effort data in the Maritimes Region (1967-77).

District 1

02	Bay St. Lawrence (Meat Cove, St. Margarets Village)
08	Dingwall (Aspy Bay, South Harbour)
14	Neil's Harbour
15	New Haven
17	North Ingonish (Ingonish, North Bay)
21	South Ingonish (Ingonish Beach, Ingonish Ferry, Ingonish Harbour)
23	White Point
25	Ingonish Centre

District 2

01	Cheticamp (Cap Rouge)
02	Broad Cove Marsh
03	Cap Le Moine (Friars Head)
08	Grand Etang
09	LaPointe
12	Margaree Harbour (Margaree, Margarre Beach, Margaree Forks, Margaree Island, South West Margaree, Chimney Corner Belle Cote)
14	Pleasant Bay
16	St. Joseph Du Moine

District 3

08	Inverness
13	Little Judique Harbour (Harbour View, Judique North)
19	Mabou Harbour (Mabou, Colindale)
20	Mabou Mines (Finlay Point)
22	Marble Mountain (Big Harbour)
23	Maryvale (Little Judique Ponds, Pig Cove)
24	Murphy Pond
26	Orangedale (River Denys)
28	Port Hastings
29	Port Hawkesbury
30	Port Hood
35	Whycocomagh
40	Big Harbour Island (Malagawatch)
41	Baxters Cove (Long Point, Judique, Judique South, Creignish)
48	McKays Point

District 4

01	Baddeck
02	Big Bras D'or (Great Brad D'or)
06	Englishtown
12	Little River (Briton Cove)

- 17 North River (North River Centre)
- 39 Iona (Little Narrows, Red Point)
- 46 Seal Island

District 6

- 01 North Sydney (Sydney Mines)
- 02 Alder Point
- 07 Eskasoni
- 11 Lingan
- 19 New Waterford
- 20 Point Aconi
- 21 South Bar

District 7

- 01 Glace Bay (Bridgeport, Port Caledonia)
- 02 Louisbourg (Big Lorraine)
- 03 Baleine
- 04 Bateston
- 09 Gabarouse
- 12 Little Lorraine
- 13 Main-A-Dieu (Mira Bay, Mira Gut)
- 18 Port Morien (Cape Morien, Morien Bay, Donkin, Homeville)
- 22 Wadden Cove (Round Island)

District 8

- 02 Chapel Cove (L'Ardoise West, West L'Ardoise)
- 03 Forchu (Capelin Cove)
- 04 Grand Greve
- 05 Grand River
- 07 L'Archeveque
- 10 Little Harbour (L'Ardoise)
- 12 Point Michaud
- 16 Three Island Cove
- 21 Soldier's Cove
- 22 Johnstown (Hag Cove)

District 9

- 01 Petit de Grat
- 02 Arichat
- 04 Boudreauville
- 06 D'Escousse
- 11 Grand River
- 12 Janvrin Harbour (Island)
- 13 Little Anse
- 14 Louisdale
- 18 Poirierville (Rocky Bay)
- 19 Pondville (Rocky Bay)
- 22 Port Royal
- 25 River Bougeois
- 28 St. Peters
- 29 West Arichat

- 32 Samsonville (French Cove)
- 42 The Points (West Bay)

District 10

- 01 Barachois

District 11

- 02 Caribou
- 05 Pictou
- 06 Pictou Island (East and West)
- 07 River John
- 09 Three Brooks
- 11 Cape John
- 12 MacDonalds Cove
- 13 Toney River
- 14 Caribou Island
- 15 Skinners Cove

District 12

- 01 Big Island
- 02 Lismore
- 03 Little Harbour
- 04 Merigonish
- 06 Pictou Harbour
- 07 Pictou Landing
- 08 Trenton
- 11 Chance Harbour

District 13

- 01 Antigonish
- 02 Antigonish Harbour
- 03 Arisaig (Maligant Cove)
- 04 Ballantyne's Cove (Cape George)
- 05 Bayfield
- 06 Cape Jack
- 07 East Tracadie
- 08 Havre Boucher
- 09 Lakevale
- 10 Linwood
- 11 Livingston Cove
- 14 Monk's Head
- 15 Morrystown (Cribbens Head, Cribbens Point)
- 16 Pomquet
- 17 Southside Harbour
- 18 Tracadie
- 19 West Tracadie

District 14

- 01 Mulgrave
- 02 Auld's Cove
- 03 Boylston
- 04 Cook's Cove
- 05 Dort's Cove
- 06 Guysborough
- 07 Hadleyville
- 10 Milford
- 11 Middle Milford
- 14 Sand Point
- 15 Steep Creek
- 17 St. Frances Harbour
- 19 Glen Keen
- 20 Cape Argos (Red Head)

District 15

- 01 Canso
- 02 Charlos Cove
- 03 Cole Harbour
- 05 East Port Felix
- 07 Fox Island
- 08 Half Island Cove
- 09 Halfway Cove
- 10 Little Dover (Dover)
- 14 Peas Brook
- 15 Phillips Harbour
- 16 Port Felix
- 17 Queensport
- 18 Torbay
- 19 White Head

District 16

- 01 Coddle Harbour
- 02 Drumhead
- 03 Goldboro
- 04 Isaac's Harbour
- 05 New Harbour
- 07 Seal Harbour (Seal Cove)
- 08 Country Harbour

District 17

- 01 Port Bickertonb
- 02 Bickerton West
- 03 Barachois (Wine harbour)
- 04 Ecum Secum
- 06 Fishermans Harbour
- 09 Little Liscombe
- 10 Liscombe
- 11 Marie Joseph

12 Port Hilford
13 Sherbrooke
14 Sonora
15 Spanish Ship Bay
22 Liscombe Mills

District 18

01 Eastern Passage
02 Cole Harbour

District 19

01 East Quoddy
02 East Ship Harbour (Monk's Cove, Newcombe's Brook)
03 Ecum Secum Bridge
04 Harrigan Cove (MacDonald's Cove Rd.)
05 Mitchell Bay
08 Moser's River
09 Murphy's Cove
10 Mushaboom
11 Necum Teuch
13 Pleasant Harbour
14 Pope's Harbour
15 Port Duffering
16 West Quoddy
17 Sheet Harbour
18 Sheet Harbour Passage
19 Sober Island
20 Spry Bay
21 Spry Harbour
22 Tangier
26 Beaver Harbour
28 Watt Section
29 Ecum Secum West

District 20

04 Clam Harbour
05 DeBaie Cove
06 East Chezzetcook
07 East Jeddore
08 East Petpeswick
10 Grand Desert
11 Jeddore-Oyster Pond
13 Little Harbour
16 Ostrea Lake
17 Owl's Head (Owl's Head Harbour)
23 Pleasant Point
24 Southwest Cove
27 Ship Harbour
28 Three Fathom Harbour
29 West Chezzetcook
30 West Jeddore

35 Head Jeddore
45 Lower East Chezzetcook
51 Rocky Run (Porters Lake)

District 21

01 Halifax
10 Greenland

District 22

01 Sambro
06 Herring Cove
07 Ketch Harbour
08 Lower Prospect
12 Portugese Cove
13 Prospect
14 Purcells Cove
15 Shad Bay
16 Terrance Bay
17 Upper Prospect
21 West Pennant

District 23

03 Boutiliers Point
06 East Dover
07 French Village
10 Hacketts Cove
12 Hubbards
13 Indian Harbour
16 Peggy's Cove
21 West Dover
22 McGrath's Cove

District 24

06 Shulee
07 Two Rivers (Joggins)
08 Sand River
09 Downing Cove
35 West Apple River

District 25

02 Bayswater
03 Big Tancook (Tancook)
05 Blandford
06 Chester
07 Chester Basin
09 Deep Cove
10 East Chester
11 East River
13 Fox Point

- 14 Ironbound
- 15 Little Tancook
- 17 Martin's River
- 18 Mill Cove
- 20 New Harbour
- 21 North West Cove
- 24 St. Margaret's Bay
- 27 Upper Blandford
- 29 Indian Point
- 31 Lower Blandford

District 26

- 01 Lunenburg
- 02 Bayport
- 03 Blue Rocks
- 05 Feltzon South
- 06 First South
- 08 Kingsburg
- 09 Lower Rose Bay
- 10 Mader's Cove
- 11 Mahone Bay
- 12 Riverport (Kraut Point)
- 13 Rose Bay
- 14 Stonehurst
- 16 Second Peninsula
- 17 Upper LaHave
- 18 Lower LaHave
- 24 Clearlands
- 27 East LaHave

District 27

- 01 Broad Cove
- 03 Bush Island
- 04 Cherry Hill
- 06 Dublin Shore
- 08 LaHave
- 09 LaHave Island
- 10 Petite Riviere
- 11 Vogler's Cove
- 12 West Dublin
- 13 Mosher's Island
- 22 Branch LaHave

District 28

- 01 Liverpool
- 02 Port Mouton
- 03 Central Port Mouton
- 04 Charleston
- 05 Coffin Island
- 07 Eagle Head
- 08 East Berlin

- 09 East Port Herbert
- 10 East Port Medway
- 11 Hunt's Point
- 12 Long Cove
- 13 Moose Harbour
- 14 Port Joli
- 15 Port Medway (Medway, Dog Cove)
- 18 South West Port Mouton
- 19 St. Catherine's River
- 21 West Berlin
- 24 Greenfield
- 26 Milton
- 29 Bang's Falls
- 30 Beach Meadows
- 32 Mill Village

District 30

- 01 Lockeport
- 03 East Green Harbour (Green Harbour)
- 04 East Jordan (Jordan River, Jordan Falls)
- 07 Little Harbour
- 10 Osborne Harbour
- 11 Pleasant Point
- 12 Port L'Hebert (West Port L'Hebert)
- 16 West Green Harbour
- 20 Jones Harbour (John's Harbour)

District 31

- 01 Shelburne
- 05 Blanche
- 10 Gunning Cove
- 11 Ingomar
- 12 Jordan Bay
- 15 Lower Sandy Point
- 20 Port LaTour (Seal Pt.)
- 21 Port Saxon
- 25 Sandy Point
- 26 Smithville (Baccaro, East Baccaro)
- 27 Upper Port LaTour
- 30 Clyde River
- 31 McNutts Island

District 32

- 03 Bear Point
- 06 Clam Point
- 07 Clark's Harbour
- 12 Newellton
- 13 Northeast Point
- 14 Prospect Point
- 16 Shag Harbour
- 17 South Side

- 18 Stoney Island
- 20 Swim Point
- 23 West Head
- 24 Woods Harbour (Upper and Lower)
- 25 Doctor's Cove
- 26 Barrington River
- 34 Sherose Island

District 33

- 01 Wedgeport
- 02 Abbot's Harbour (Middle West Pubnico)
- 04 Argyle Sound
- 05 Central Argyle
- 06 Deep Cove Island
- 08 East Pubnico
- 09 Eel Brook
- 10 Ellenwood Island
- 11 Glenwood
- 12 Harris Island
- 13 Hubbard's Point
- 14 John's Island
- 15 Ledge Harbour
- 17 Lower Argyle
- 18 Lower East Pubnico
- 19 Lower Surette Island
- 20 Lower Wedgeport
- 21 Lower West Pubnico (Dennis Point)
- 23 Morris Island
- 28 Sluice Point
- 32 Turpentine Island
- 33 Tusket
- 34 Tusket Islands
- 41 Upper Wedgeport
- 42 Belleville
- 43 Robert Island
- 44 Argyle Head

District 34

- 01 Yarmouth
- 04 Cook Beach
- 05 Kelly Cove
- 07 Little River Harbour
- 09 Pembroke
- 10 Pinkney's Point
- 11 Port Maitland
- 13 Sandford
- 14 Short Beach
- 15 Yarmouth Bar
- 17 Brooklyn
- 19 Plymouth
- 20 Arcadia
- 21 Pleasant Lake

- 22 Cheggogin Pt.
- 24 Central Chebogue (Town Point)
- 26 Beaver River
- 27 Tusket Falls
- 44 Frog Point

District 35

- 01 Hampton
- 02 Margaretsville
- 03 Port Lorne
- 04 Port George
- 05 Annapolis River
- 09 Cottage Cove

District 36

- 03 Cape St. Mary
- 04 Church Point
- 05 Comeauville
- 08 Meteghan
- 09 New Edinburgh
- 10 Salmon River
- 11 Saulnierville
- 16 Meteghan River
- 20 Belliveau Cove (White Cove)
- 22 Weaver Settlement

District 37

- 02 Centreville (Trout Cove)
- 03 East Ferry
- 04 Freeport
- 05 Griffin's Brook
- 06 Gulliver Cove
- 08 Little Rover
- 10 Mink Cove - Fish Plant - fish are trucked here
- 12 Sandy Cove (T.R. Brook)
- 16 Tiverton
- 18 Westport (Brier Island)
- 19 Whale Cove

District 38

- 01 Culloden (Broad Cove)
- 02 Dibgy
- 03 Gilbert Cove
- 04 Weymouth (North)

District 39

- 01 Annapolis Royal
- 02 Delap Cove
- 03 Granville Ferry

04 Hillsburn
06 Parker's Cove
08 Victoria Beach
09 Young Cove
10 Port Wade
11 Phinney Cove
12 Karsdale
13 Port Royal
14 Clementsport
15 Upper Clements
16 Deep Brook
17 Granville Beach
21 Leonard's Cove

District 40

01 Halls Harbour
02 Baxter Harbour
03 Scott Bay
04 Canada Creek (Black Rock, Grafton)
05 Harbourville
06 Morden
07 Ross Creek

District 41

01 Delhaven
02 Kingsport
03 Gaspereau River
07 Mill Creek
08 Avonport
09 Canning
18 Dodge Brook

District 42

01 Elmsdale
02 Enfield
04 Lantz
05 Shubenacadie
06 Walton
07 Noel
09 Milford
14 Newport
15 Shubenacadie East
16 Summerville
19 Ryans Creek
21 Hantsport
25 Avon River

District 43

01 Five Islands
03 Stewiacke

08 Economy (Carrs Brook)
09 Spencer's Cove
10 Lower Five Islands

District 44

02 Parrsboro
04 Two Islands
05 Spencer's Island
06 Diligent River
08 Port Greville
10 Advocate Harbour

District 45

02 North Port
03 Port Howe
04 Port Philip
05 Pugwash
22 Tidnish Bridge

District 46

04 Malagash
07 Wallace

District 48

01 Black River
03 Indian Town
06 Mispic
07 St. John
08 St. Martins
10 Red Head
12 Tynemouth Creek (Ten Mile Creek)
15 Milledgeville

District 49

01 Chance Harbour
02 Dipper Harbour
03 Lorneville
04 Musquash
07 South Musquash
10 Milford (Randolph)
14 Five Fathom Hole (East Musquash)
15 Little LePreau

District 50

08 Ingalls Head (Grand Harbour)
09 North Head
10 Seal Cove (Bradford Cove)
12 White Head

(BLANK PAGE)

14 Woodward's Cove

District 51

02 Wilson's Beach (Mill Cove, Head Harbour)
03 Welchpool
05 Fairhaven (Northern Harbour)
07 Leonardville
08 Lord's Cove
10 Richardson (Northwest)
11 Stuart Cove (Stuart Town, Lambertville)

District 52

01 Bliss Island (Harbour)
02 Bocabec
03 Chamcook
04 L'Etete
05 Mascarene
06 St. Andrews
08 Oven Head
10 Digdequash
11 Moore's Mills
12 Back Bay

District 53

02 Beaver Harbour
03 Black's Harbour
04 Crow Harbour
05 Dead Man's Harbour
06 Foley's Cove
07 Haggarty Cove
09 Little LePreau
10 Boynes Cove (Boyles Cove) and Maces Bay
11 New River
13 Pocologan
15 Red Head Cove
16 Seeley's Cove
18 L'Etang

District 55

08 Hampton
10 Hatfield Point
22 Westfield

District 56

01 Cambridge
08 Gagetown
10 Upper Gagetown
12 Newcastle Creek

13 Grand Lake
16 Jemseg
17 Queenstown
30 Washademoak Lake

District 57

07 Lakeville Corner
08 Oromocto (Woodside)
10 Sand Point (Indian Lake, French Lake)

District 63

07 Dalhousie
13 New Mills

District 64

03 Bathurst
04 Belledune
06 Beresford
08 Green Point
10 Petit Rocher

District 65

01 Caraquet
02 Blue Cove
05 Grand Anse
08 Lower Caraquet
09 Maisonette
10 Middle Caraquet
18 Salmon Beach
19 Stone Haven

District 66

01 Lameque
07 Island River
08 Little Shippegan
11 Miscou Harbour
16 Pigeon Hill
20 St. Marie Sur Mer
22 Savory Landing

District 67

01 Shippegan
03 Inkerman (Pokemouche River)
04 Inkerman Ferry
10 LeGoulet
11 St. Simon

District 68

03 Four Roads
11 Tracadie
17 Val Comeau

District 70

03 Burnt Church
05 Lower Neguac
08 Neguac
12 Tabusintac
13 Wishart Point

District 71

05 Loggieville
07 Lower Newcastle
09 Nappan Bay
11 Newcastle
12 Oak Point
16 Miramichi River
22 Mill Bank

District 73

01 Baie Ste. Anne
02 Baie due Vin (Point Gardiner)
04 Black River Bridge (Black River, Hexham, Miramichi)
05 Escuminac (Lower Escuminac, Escuminac Point)
07 Hardwick
08 Manuels
11 Eel River Bridge

District 75

03 Kouchibouguac River
04 Logiecroft
05 Point Sapin
06 St. Louis
07 St. Louis Cape

District 76

01 Aldouane
03 Cap Lumiere
06 Little Aldouane
08 Rexton
10 Richibucto
11 Richibucto Cape
17 Big Cove
21 Bass River
23 St. Charles
24 Beersville

25 Indian Island

District 77

01 Buctouche
02 Buctouche Bay
03 Caissie Cape (Bougeois Office)
05 Cocagne
06 Cocagne Cape
08 Grand Digue
09 St. Edouard (St. Edward)
10 St. Francois
11 Ste Marie (St. Mary, Buctouche River)
12 St. Thomas
17 Cote Ste. Anne (Chockpish)

District 78

06 Dupuis Corner
07 Lower Cap Bald (Bas Cap Pele, Cap Bald, Cap Pele)
08 Point Du Chene (Shediac)
09 Robichaud (Abougoggin)
11 Shediac Bridge

District 79

01 Alma

District 80

01 Baie Verte
02 Bayfield
03 Cape Tormentine
07 Little Cape
08 Little Shemogue
10 Murray Corner (Botsford)
12 Port Elgin
13 Shemogue
14 Upper Cape

District 81

01 Belliveau Village

District 82

02 Brae Harbour
05 Cape Wolfe
07 Howard Cove
08 Miminogash
15 Skinner's Pond
18 West Point
26 Burton

District 83

02 Borden
03 Cape Egmont
05 Egmont Bay (Abrams Village)
06 Higgins Wharf (Enmore, Percival, Percival River)
10 Summerside
15 Bedeque (oysters sent to Freeland)
23 Wilmont

District 85

02 Canoe Cove
05 Nine Mile Creek
06 Rice Point
07 Victoria
08 West River
09 Hillsborough Bay
10 North River
11 Rocky Point

District 86

01 Alexandra
02 Belle River
03 Charlottetown
04 Cherry Valley
05 East River
07 Orwell Bay
08 Pinette
09 Point Prim
10 Pownal Bay
13 Vernon River
14 Wood Island
15 MacAulay's Wharf
20 Vernon Bridge
24 Bunbury

District 87

01 Beach Point
03 Cardigan
06 Georgetown
07 Launching
09 Lower Montague
10 Montague
11 Murray Harbour
13 Murray River
14 Newport
15 Pammure Island
16 Sturgeon
20 Graham Pond (Graham Creek, Gaspereau)
28 Greek River
35 Machon Point

38 Mink River (Murray Harbour North, Clows Wharf)

District 88

01 Souris
02 Annandale
03 Basin Head
08 Clearspring
11 Fortune (Fortune Harbour)
19 Naufrage
20 North Lake
21 Red Head (Morell)
24 Savage Harbour
31 Little Harbour
44 Campbells Cove

District 92

01 Alberton (Northport, Alberton South)
08 Foxley River
12 Sea Cow Pond
13 Tignish (Judes Pt., Tignish River, Tignish Run, Tignish Shore)
21 Anglo (Irish moss landed at Tignish and trucked to plant here)

District 93

02 Bideford
05 Milligan's Wharf (Conway, Hardy's Channel, Brooks Shore)
06 Darnley
08 Freeland (oyster farm)
09 Grand River
12 Malpeque
15 Miscouche
16 Port Hill
28 Lenox Island

District 95

03 French River
04 North Rustico
07 Stanley Bridge
09 Rustico Bay
10 New London
12 Rustico
14 Osyter Bed Bridge

District 96

02 Cove Head
03 Fort Augustus
06 Tracadie
07 Mount Stewart

08 Grand Tracadie
10 Curran Band

Table H.3. Species codes for detailed catch/effort for Maritimes Region (1967-77).

Species Name	Common Name	Species Code
	Fish (N.S.)	000
Gadus Morhua	Cod (Atlantic)	100
Melanogrammus Aeglefinus	Haddock	110
Sebastes Sp.	Redfish (Unseparated)	120
Hippoglossus Hippoglossus	Halibut (Atlantic)	130
Hippoglossoides Platessoides	American Plaice	140
Limanda Ferruginea	Yellowtail Flounder	141
Glyptocephalus Cynoglossus	Greyscale, Witch, Flounder	142
Pseudopleuronectes Americanus	Winter Flounder	143
Reinhardtius Hippoglossoides	Turbot, Greenland Halibut	144
Pleuronectidae F.	Flounder (Unidentified) N.S.	149
Pollachius Virens	Pollock	170
Urophycis Tenuis	White Hake	171
Merluccius Bilinearis	Silver Hake	172
Brosme Brosme	Cusk	173
Anarchadidae F.	Catfish, Wolffish	174
Microgadus Tomcod	Tomcod (Atlantic)	175
Cyclopterus Lumpus	Lumpfish	176
Lophius Americanus	Monkfish, Goosefish, Angler	177
Ammodytes	Sand Eels (Sand Lance N.S.)	178
Coryphaenoides Rupestris	Rock, Roundnose Grenadier	179
Urophycis Chuss	Squirrel or Red Hake	180
Hake unid.	Scale Fish (Hake N.S.)	198
Groundfish	Groundfish (Unspecified)	199
Clupea Harengus	Herring (Atlantic)	200
Scomber Scombrus	Mackerel (Atlantic)	250
Xiphias Gladius	Swordfish	251
Thunnus Alalunga	Tuna (Albacore)	252
Thunnus Thynnus	Tuna (Bluefin)	254
Euthynnus Pelamis	Stripped Bonita (Skipjack) Tuna	255
Thunnus Albacares	Tuna (Yellowfin)	256
Scombroidei (Suborder)	Tuna, (Unspecified)	259
Pelagic Fish (N.S.)	Unspecified Pelagic Fish	299
Alosa Pseudoharengus	Alewife	350
Argentina Silus	Argentine (Atlantic)	351
Blennioidei S.O. (Obsolete)	Eels (Blennies, Shannies, Gunnels)	352
Salmo Salar	Salmon (Atlantic)	354
Alosa Sapidissima	Shad (American)	355
Rajtidae F.	Skates (N.S.)	356
Osmerus Mordax	Rainbow Smelt	357
Morone Saxatilis	Striped Bass	358
Acipenseridae F.	Sturgeon	359
Mallotus Villosus	Capelin	360
Salvelinus Sp.	Trout Char. (N.S.)	361

Table H3. Continued.

Species Name	Common Name	Species Code
<i>Etmopterus Spinax</i>	Dogfish (N.S.)	362
<i>Salmo Sp.</i>	Trout	363
<i>Menidia Menidia</i>	Silversides (Atlantic)	364
<i>Esox Sp.</i>	Pickereel, Pike, Jackfish	366
Mugilidae F.	Suckers (Mullet)	367
<i>Coregonus Canadensis</i>	Atlantic Whitefish	368
Lamnidae	Shark, Mackerel	375
Sphyrnidae	Shark, Hammerhead (N.S.)	376
Squaliformes O.	Large Shark, Unspecified (N.S.)	379
Unspecified (Freshwater) Fish	Unspecified (Freshwater) Other Fish	399
<i>Spisula Solidissima</i>	Bar (Surf) Clams	600
<i>Hiatella Arctica</i>	Soft Shell or Long Neck Clams	601
<i>Venus Mercenaria</i> (Obsolete)	Quahaug Clams	602
<i>Siliqua sp.</i>	Razorclams	603
Quahaug Clams, Bay Cherry- stone	Quahaug Clams, Bay Cherry- stone	604
Quahaug Clams, Bay Little Neck	Quahaug Clams, Bay Little Neck	605
Quahaug Clams, Bay Chowder	Quahaug Clams, Bay Chowder	606
<i>Arctica Islandica</i>	Quahaug Clams, Ocean	607
Prionodesmata, Teleoctesmata, S.C.	Clams, Unspecified (N.S.)	609
<i>Mytilus Edulis</i>	Mussels (Common)	610
<i>Crassostrea Virginica</i>	Oysters (American Cupped Oyster)	611
Pectinidae F.	Scallops	612
Loliginidae, Ommastrephidae F.	Squid (N.S.)	613
Littorinidae F.	Winkles (Periwinkles)	614
<i>Illex Illecebrosus</i>	Short-Finned Squid, White, (Illex)	615
<i>Loligo Pealei</i>	Long-Finned Squid, Red, (Loligo)	616
Mollusca P.	Unspecified Molluses (Mollusca P.)	699
<i>Homarus Americanus</i>	Lobster (American)	700
Decapoda O.	Shrimp	702
<i>Cancer Irroratus</i>	Atlantic Rock Crab	704
<i>Chionoecetes Sp.</i> (Obsolete)	Spider (Queen, Snow) Crab, Unid.	705
<i>Geryon Quinquedens</i>	Deep Sea Red Crab	706
<i>Brachyura S.</i>	Unspecified Crabs (Brachiuran Crabs)	707
Crustacea C.	Unspecified Crustaceans	799
Dulse (<i>Palmaria Palmata</i>)	Dulse (<i>Palmaria Palmata</i>)	900
<i>Chondrus Crispus</i>	Irish Moss	901

Table H3. Continued.

Species Name	Common Name	Species Code
Thallophyta C.	Kelp, Seaweed, (Algae)	902
Gigartina Stellata	Fundy Moss	903
Furcellaria Fastigiata	Wire Weed/Horsetail	904
	Other Seaweeds	
Acophyllum Nodosum	Rockweed	906
Chondrus Crispus and Furcellaria	Mixed Moss	907

Table H.4. Gear codes for detailed catch/effort data for Maritime Region (1967-77).

<u>GEAR</u>	<u>CODE</u>
Traps (All Types)	01
Weirs	02
Rakes and Tongs	03
Beach Seines	04
Gill Nets, Drift	05
Gill Nets, Set or Fixed	06
Handlines	07
Miscellaneous	08
Unspecified	09
Shrimp Trawlers 70' and Over	20
Shrimp Trawlers Under 70'	10
Side Otter Trawlers 70' and Over	21
Side Otter Trawlers Under 70'	11
Stern Otter Trawlers 70' and Over	22
Stern Otter Trawlers Under 70'	12
Scallop Draggers 70' and Over	23
Scallop Draggers Under 70'	13
Longliners 70' and Over	24
Longliners Under 70'	14
Purse Seiners 70' and Over	25
Purse Seiners Under 70'	15
Harpoons 70' and Over	26
Harpoons Under 70'	16
Danish Seiners	17
Scottish Seiners	18
Midwater Trawlers 70' and Over	29
Midwater Trawlers Under 70'	19
Labrador Floaters (Cod Traps)	41
Labrador Floaters (Longlines)	44
Labrador Floaters (Gill Nets)	46
Labrador Floaters (Handlines)	47
Labrador Floaters (Miscellaneous)	48
Mechanical Squid Jiggers	49
Seal (Landsmen)	50
Seal (Vessels 150 G.T. and Over Front)	51
Seal (Vessels 150 G.T. and Over Gulf)	52
Seal (Vessels less than 150 G.T. Front)	53
Seal (Vessels less than 150 G.T. Gulf)	54
Pair Seiners	55
Salmon Trap nets	61
Salmon Drift Nets	65
Salmon Gill Nets (Surface Set)	66
Salmon Gill Nets (Bottom Set)	67
Unspecified Salmon Gear	69
Dory Vessels	90

Table H.5. Fishing depth codes used in detailed catch/effort data for Maritimes Region (1967-77).

GROUND FISH		SCALLOPS	
Depth	Code	Depth	Code
Up to 30	1	Up to 10	1
31 - 60	2	11 - 20	2
61 - 90	3	21 - 25	3
91 - 120	4	26 - 30	4
121 - 150	5	31 - 35	5
151 - 180	6	36 - 40	6
181 - 210	7	41 - 45	7
211 - 240	8	46 - 60	8
Over 240	9	61 and Over	9
Unknown	0		

Table H.6. Unit Area numeric and alphanumeric codes used in detailed catch/effort data for Maritimes Region (1967-77).

Numeric Code	Alpha-numeric	Numeric Code	Alpha-numeric	Numeric Code	Alpha-numeric
110	1A	422	4Ss,x,i	455	4Wh
120	1B	423	4Sy	456	4Wj
130	1C	424	4Sv	457	4Wk
140	1D	425	4Sw	458	4Wl
150	1E	430	4T	460	4X
160	1F	431	4Tf	461	4Xm
210	2G	432	4Tg	462	4Xn
220	2H	433	4Th	463	4Xo
230	2J	434	4Tj	464	4Xp
310	3K	435	4Tk	465	4Xq
320	3L	436	4Tl	466	4Xr
330	3M	437	4Tm	467	4Xs
340	3N	438	4Tn	510	5Y
350	3O	439	4To	511	5Yb
360	3PS	470	4VN	512	5Yc
370	3PN	440	4VS	513	5Yd
410	4R	442	4VSb	514	5Ye
411	4Ra	443	4VSc	515	5Yf
412	4Rb	450	4W	520	5ZE
413	4Rc	451	4Wd	521	5ZEg
414	4Rd	452	4We	522	5ZEh
420	4S	453	4Wf	523	5ZEj
421	4Sz	454	4Wg	524	5ZEm

Table H.6. (Continued)

Numeric Code	Alpha-numeric	Numeric Code	Alpha-numeric	Numeric Code	Alpha-numeric
525	5ZEn	620	6B	660	6F
526	5ZEo	630	6C	670	6G
530	5ZW	640	6D	680	6H
610	6A	650	6E		

Table H.7. Class of document codes used for detailed catch/effort data for Maritimes Region (1967-77).

Vessel Type	Class of Effort Availability	Code
Inshore	No Effort	0
Offshore Groundfish	All effort including tenths of trips, days at sea, days fished or line and hours known.	1
Offshore Groundfish	Tenths of trips only.	8
Offshore Groundfish	No Effort	9
Offshore Lobster		8
Gillnet, Mackerel, Crab, Herring, and Tuna Vessels		9

Table H.8. Market category codes for detailed catch/effort data for Maritimes Region (1967-77).

Market Category	Code
Extra small (snapper for halibut, ping-pong for haddock)	0
Small (chicken for halibut, scrod for cod and haddock, canners for lobsters)	1
Medium (market for cod)	2
Large (steak for cod, markets for lobster)	3
Extra large (whale for halibut)	4
Unsize	9

Table H.9. Condition landed codes for details catch/effort data for Maritimes Region (1967-77).

Condition	Code
Round (in shell for crustaceans and molluscs, wet or green for seaweeds)	1
Dressed head on (dry or black or bleached for seaweeds)	2
Dressed head off	3
Split; pickled split (for herring, mackerel, turbot, salmon and trout)	4
Green Salted; pickled fillets, ordinary (for herring and mackerel)	5
Wings (for skate); tails (for monkfish), pickled fillets, skinless (for herring)	6
Shucked; Kippers (for herring); dried (for caplin and squid); wet (for cod); smoked (salmon)	7
Light Salted Dry; pickled dressed (for herring; turbot)	8
Not provided	9

Table H.10. Conversion factor for landed weight to live and common weight used in detailed catch/effort data for Maritimes Region (1967-77).

Species, Category, Condition	From Pounds to Round Weight in Kilograms	From Pounds to Common- Landed Weight in Pounds
100 9 1	.4536	.83
100 9 2	.5443	1.00
100 9 3	.7258	1.15
100 9 4	.7711	1.50
100 9 5	1.2247	2.00
101 9 1	.4536	.82
101 9 2	.5534	1.00
110 9 1	.4536	.83
110 9 2	.5443	1.00
110 9 3	.7258	1.15
110 9 4	.7711	1.50
110 9 5	1.2247	2.00
120 9 1	.4536	1.00
120 9 2	.5443	1.20
130 0 2	.5216	.86
130 0 3	.6124	1.00
130 1 2	.5216	.86
130 1 3	.6124	1.00
130 2 2	.5216	.86
130 2 3	.6124	1.00
130 3 2	.5216	.86
130 3 3	.6124	1.00
130 4 2	.5216	.86
130 4 3	.6124	1.00
130 9 1	.4536	.71
130 9 2	.5216	.86
130 9 3	.6124	1.00
140 9 1	.4536	1.00
140 9 2	.4990	1.10
141 9 1	.4536	1.00
141 9 2	.4990	1.00
142 9 1	.4536	1.00
142 9 2	.4990	1.10
143 9 1	.4536	1.00
143 9 2	.4990	1.10
144 9 1	.4536	1.00
144 9 2	.4990	1.10
144 9 3	.6124	1.35
149 9 1	.4536	1.00
149 9 2	.4990	1.10
170 9 1	.4536	.83
170 9 2	.5443	1.00
170 9 3	.7258	1.15
170 9 4	.7711	1.50
170 9 5	1.2247	2.00
171 9 1	.4536	.83
171 9 2	.5443	1.00

Table H.10. (Continued)

Species, Category, Condition	From Pounds to Round Weight in Kilograms	From Pounds to Common- Landed Weight in Pounds
171 9 3	.7258	1.15
171 9 4	.7711	1.50
171 9 5	1.2247	2.00
172 9 1	.4536	1.00
172 9 2	.5443	1.20
173 9 1	.4536	.83
173 9 2	.5443	1.00
173 9 3	.7258	1.15
173 9 4	.7711	1.50
173 9 5	1.2247	2.00
174 9 1	.4536	.83
174 9 2	.5443	1.00
174 9 3	.7258	1.15
174 9 4	.7711	1.50
174 9 5	1.2247	2.00
175 9 1	.4536	1.00
176 9 1	.4536	1.00
177 9 1	.4536	.29
177 9 6	1.5876	1.00
178 9 1	.4536	1.00
179 9 1	.4536	1.00
179 9 2	.5566	1.23
180 9 1	.4536	.83
180 9 2	.5443	1.00
180 9 3	.7258	1.15
198 9 9	.4536	1.00
199 9 5	1.2247	2.00
199 9 9	.4536	1.00
200 9 1	.4536	1.00
200 9 4	.8392	1.85
200 9 5	1.2111	2.67
200 9 6	385.5600	850.00
200 9 7	.9072	2.00
200 9 8	.6804	1.50
200 9 9	.4536	1.00
250 9 1	.4536	1.00
250 9 5	.7938	1.75
250 9 5	.9072	2.00
250 9 7	.9072	2.00
250 9 8	.6804	1.50
251 1 1	.4536	.76
251 1 3	.5987	1.00
251 2 1	.4536	.76
251 2 3	.5987	1.00
251 3 1	.4536	.76
251 3 3	.5987	1.00
251 9 1	.4536	.76
251 9 3	.5987	1.00
252 9 1	.4536	.80

Table H.10. (Continued)

Species, Category, Condition	From Pounds to Round Weight in Kilograms	From Pounds to Common- Landed Weight in Pounds
252 9 3	.5670	1.00
253 9 1	.4536	.80
253 9 3	.5670	1.00
254 9 1	.4536	.80
254 9 3	.5670	1.00
255 9 1	.4536	.80
255 9 3	.5670	1.00
256 9 1	.4536	.80
256 9 3	.5670	1.00
259 9 1	.4536	.80
259 9 3	.5670	1.00
299 9 9	.4536	1.00
350 9 1	.4536	1.00
350 9 8	.5897	1.30
351 9 1	.4536	1.00
352 9 1	.4536	1.00
352 9 2	.4990	1.10
354 1 1	.4536	1.00
354 1 2	.5443	1.20
354 1 3	.5670	1.25
354 3 1	.4536	1.00
354 3 2	.5443	1.20
354 3 3	.5670	1.25
354 9 1	.4536	1.00
354 9 2	.5443	1.20
354 9 3	.5670	1.25
354 9 4	113.4000	250.00
354 9 7	.6030	1.33
355 9 1	.4536	1.00
355 9 2	.5443	1.19
356 9 1	.4536	.25
356 9 2	1.8144	1.00
356 9 6	1.8144	1.00
357 9 1	.4536	1.00
357 9 2	.6804	1.50
357 9 3	.9072	2.00
358 9 1	.4536	1.00
358 9 2	.5443	1.20
359 9 1	.4536	1.00
359 9 2	.5443	1.20
359 9 3	.5670	1.25
360 9 1	.4536	1.00
360 9 7	.6800	1.50
361 9 1	.4536	1.00
361 9 4	152.4100	336.00
362 9 1	.4536	1.00
363 9 1	.4536	1.00
364 9 1	.4536	1.00
366 9 1	.4536	1.00

Table H.10. (Continued)

Species, Category, Condition	From Pounds to Round Weight in Kilograms	From Pounds to Common- Landed Weight in Pounds
367 9 1	.4536	1.00
368 9 1	.4536	1.00
375 9 1	.4536	1.00
375 9 3	.5443	1.20
376 9 1	.4536	1.00
376 9 3	.5443	1.20
379 9 1	.4536	1.00
379 9 3	.5443	1.20
399 9 9	.4536	1.00
600 9 1	.4536	1.00
601 9 1	.4536	1.00
602 9 1	.4536	1.00
603 9 1	.4536	1.00
604 9 1	.4536	1.00
605 9 1	.4536	1.00
606 9 1	.4536	1.00
607 9 1	.4536	1.00
609 9 1	.4536	1.00
609 9 7	2.4948	5.50
610 9 1	.4536	1.00
611 9 1	.4536	1.00
611 9 7	3.6288	8.00
612 9 1	.4536	.12
612 9 7	3.7648	1.00
612 9 9	.4536	1.00
613 9 1	.4536	1.00
613 9 2	.5171	1.14
613 9 6	.9979	2.20
613 9 7	1.8144	4.00
614 9 1	.4536	1.00
615 9 1	.4536	1.00
616 9 1	.4536	1.00
699 9 1	.4536	1.00
700 1 1	.4536	1.00
700 3 1	.4536	1.00
700 6 1	.4536	1.00
700 9 1	.4536	1.00
702 9 1	.4536	1.00
702 9 6	.5080	1.12
703 9 1	.4536	1.00
704 9 1	.4536	1.00
705 9 1	.4536	1.00
706 9 1	.4536	1.00
707 9 1	.4536	1.00
708 9 1	.4536	1.00
799 9 1	.4536	1.00
900 9 1	.4536	1.00
900 9 2	1.8144	4.00
900 9 9	.4536	1.00

Table H.10. (Continued)

Species, Category, Condition	From Pounds to Round Weight in Kilograms	From Pounds to Common- Landed Weight in Pounds
901 7 1	.4536	1.00
901 8 1	.4536	1.00
901 9 1	.4536	1.00
901 9 2	1.8144	4.00
901 9 9	.4536	1.00
902 9 1	.4536	1.00
902 9 2	1.8144	4.00
902 9 9	.4536	1.00
903 9 1	.4536	1.00
903 9 2	1.8144	4.00
903 9 9	.4536	1.00
904 7 1	.4536	1.00
904 8 1	.4536	1.00
904 9 1	.4536	1.00
904 9 2	1.8144	4.00
904 9 9	.4536	1.00
905 9 9	.4536	1.00
906 9 1	.4536	1.00
906 9 2	1.8144	4.00
906 9 9	.4536	1.00
907 9 1	.4536	1.00
907 9 2	1.8144	4.00
907 9 9	.4536	1.00
909 9 1	.4536	1.00
910 9 9	.0113	1.00
911 9 9	.4536	1.00
912 9 9	.4536	1.00
913 9 9	.4536	1.00
914 9 9	.4536	1.00
916 9 9	.4536	1.00
919 9 9	.4536	1.00
920 9 9	.4536	1.00
921 9 9	.4536	1.00
922 9 9	.4536	1.00
923 9 9	.4536	1.00
927 9 9	.4536	1.00
928 9 9	.4536	1.00
999 9 9	.4536	1.00

Table H.11. Lobster Statistical District codes used in detailed catch/effort data for Scotia-Fundy Region (1978).

District	Code
1	Ø1
2	Ø2
3	Ø3
4	Ø4
5	Ø5
6a	61
6b	62
7a	71
7b	72
7b1	73
7c	74
8	Ø8
9a	91
9b	92
10a	
10b	
10c	
10d	
11	
12	
13	
14	

Table H.12. The valid alphanumeric NAFO codes for division and unit area of capture. The first character indicates the NAFO subarea, the second character indicates the NAFO Division, the third character indicates the NAFO Unit Area. See Figure D.4 ('u' as in '4Xu' means unknown unit area in 4X).

Subarea	Division	Unit Area	Subarea	Divisions	Unit Area
1	1A		3	3K	
	1B				3Ka
	1C				3Kb
	1D				3Kc
	1E				3Kd
	1F				3Ke
	1G				3Kf
					3Kg
2	2G				3Kh
		2Ga			3Ki
		2Gb			3Kk
		2Gc		3L	3Ku
		2Gd			3La
		2Ge			3Lb
		2Gf			3Lc
		2Gg			3Ld
		2Gp			3Le
		2Gu			3Lf
	2H				3Lg
		2Ha			3Lh
		2Hb			3Li
		2Hc			3Lj
		2Hd			3Lq
		2He			3Lp
		2Hf			3Ls
		2Hh			3Lt
		2Hu			3Lu
	2J			3M	
		2Ja			3Ma
		2Jb			3Mb
		2Jc			3Mc
		2Jd			3Md
		2Je			3Mm
		2Jf			3Mu
		2Jg		3N	
		2Ji			3Na
		2Jj			3Nb
		2Jl			3Nc
		2Jm			3Nd
		2Jn			3Ne
		2Ju			3Nf
					3Nn
					3Nu

Table H.11. (Continued)

Subarea	Division	Unit Area	Subarea	Divisions	Unit Area			
3	30	30a	4	4T	4Tk			
		30b			4Tl			
30c		4Tm						
30d		4Tn						
30e		4To						
30f		4Tp						
30u		4Tq						
3P		3Pn		4W	4Wd			
		3Pa			4We			
		3Pb			4Wf			
		3Pc			4Wg			
		3Pd			4Wh			
		3Pe			4Wj			
		3Pf			4Wk			
4	4V	4Vn	5	4X	4Xl			
		4VSb			4Xm			
		4VSc			4Xn			
		4VSe			4Xo			
		4VSv			4Xp			
		4VSu			4Xq			
		4R			4Ra	4Xr		
					4Rb	4Xs		
					4Rc	4Xx		
					4Rd	4Xu		
					4Ru			
		4S			4Si	5	5Y	5Yb
					4Ss			5Yc
					4Sv			5Yd
4Sw	5Ye							
4Sx	5Yf							
4Sy	5Yu							
4Sz	5Z		5ZEg					
4Su			5ZEh					
4T			4Tf	5ZEj				
			4Tg	5ZEm				
	4Th	5ZEN						
	4Tj	5ZEo						
			5XWq					
			5Zu					

NOTE:

Division 3Pn is same as Unit Area 3Pn.

Division 4Vn is the same as Unit Area 4Vn.

Division 4Vs is $4Vb + 4Vc + 4Ve + 4Vv + 4Vx$.

Division 3Ps is $3pa + 3Pb + 3Pc + 3Pd + 3Pe + 3Pf + 3Pg + 3Ph$ (that is, all 3P except 3Pn).

Division 5Ze is $5Zg + 5Ah + 5Zj + 5Zm + 5Zh + 5Zo$ (that is, all 5Z except 5Zq).

Division 5Zw is same as Unit Area 5Zq.



SUPPLEMENTARY PURCHASE SLIP - B

This report covers the period from to19

Note: To be used for reporting all fish landings in a community during the month which were not recorded in fresh state on regular purchase slips.

Statistical District No. Name of Community County

1. FISH PROCESSED BY FISHERMEN - salted cod, pickled herring, etc.

Product Weight (lb.)	Species and Market Form	Fresh fish* Price per lb.	Gear used	For office use only

2. FRESH FISH SALES

Product Weight (lb.)	Fresh fish* Price per lb.	Gear used	For office use only

3. FRESH FISH USED AS BAIT BY FISHERMEN

Weight (lb.)	Species and Market Form	Fresh fish* Price per lb.	Gear used	For office use only

4. OTHER LANDINGS (including fish consumed by fishermen and their families)

Product Weight (lb.)	Species and Market Form	Fresh fish* Price per lb.	Gear used	For office use only

*Price paid to fishermen for fresh fish in your district.

Date Signature
Fisheries Officer

This report, when completed is to be forwarded to the Halifax office not later than the 5th of the month following.

Figure H.3. A sample of the supplementary purchase slip-B completed for all fish sales other than in fresh state to the processor.

Environment Canada / Environnement Canada
Fisheries and Marine / Pêches et Sciences de la mer

PURCHASE SLIP GUIDE (To be completed for each fish buyer)
GUIDE DE BORDEREAU D'ACHAT (À remplir pour chaque acheteur de poissons)

STATISTICAL DISTRICT OR SECTION (NFLO) NO.
DISTRICT STATISTIQUE OU RÉGION (T.N.) N°
DATE 18.....

1. NAME OF BUYER
NOM DE L'ACHETEUR

ADDRESS OF BUYER
ADRESSE DE L'ACHETEUR

Processor Commission Agent Peddler
Fabricant Commissionnaire en marchandises Colporteur
Assembler Other (specify)
Empaqueteur Autre (spécifier)

PLACE FISH BOUGHT
Poisson acheté à (Nou)

2. FORM IN WHICH FISH OR SHELLFISH ARE SHOWN ON PURCHASE SLIPS (specify by species).
FORME SOUS LAQUELLE LES POISSONS OU MOLLUSQUES FIGURENT SUR LES BORDEREAUX D'ACHAT (spécifier par espèce).

- Round
Poids brut
- Cutted head off
Vide, sans tête
- Cutted head on
Vide, avec tête
- Split
Fendue
- In shell
Dans l'écaille
- Shucked
Écaillé
- Other (specify)
Autre (spécifier)

3. WEIGHTS OF UNITS OF MEASURE (specify by species).
POIDS DES UNITÉS DE MESURE (spécifier par espèce):

How many pounds in a:
Nombre de livres dans:

- Tub
Une demi-douzaine
- Basket
Un panier
- Barrel
Un baril
- Gallon
Un gallon
- Other (specify)
Autre (spécifier)

4. PRICE BY SPECIES (if not shown on purchase slip).
CÔÛT PAR ESPÈCES (si non inscrit sur les bordereaux d'achat)

5. GEAR USED
ENGINS DE PÊCHE UTILISÉS

6. REMARKS
REMARQUES

Signature
Pêcheries Officier / Agent de pêche

Figure H.4 - A sample of the purchase slip guide completed by the Fisheries Officer.

Herring Log Book

19 ____

Vessel Name _____ Captain _____ Gear Type _____ Gear Size _____

Departure _____ port _____ date _____ time _____ Landing _____ port _____ date _____ time _____

Fishing Grounds Searched _____ Sonar Time _____ on _____ off _____

Set No.	Fishing or Carrying		Set Location	Total Catch	Total Kept	Buyer	Market Sought	Comments (including unsuccessful nights)
	Set Time Start	Set Time Finish	Point or Square	Specify	units			

Use 24 hr Clock

Lat.+Long.

or
Loran C

or
Square (from map)

tons (metric)

tons (short)

other _____

Specify:

- OSS
- Sardine
- Bait
- Roe
- Adult shore

e.g: - why any sets were released

- fish given away/received
- adverse conditions (such as weather)
- water depth
- other notes

00008 N^o 03

Figure H.6. A sample log sheet for a pelagic fishing trip.

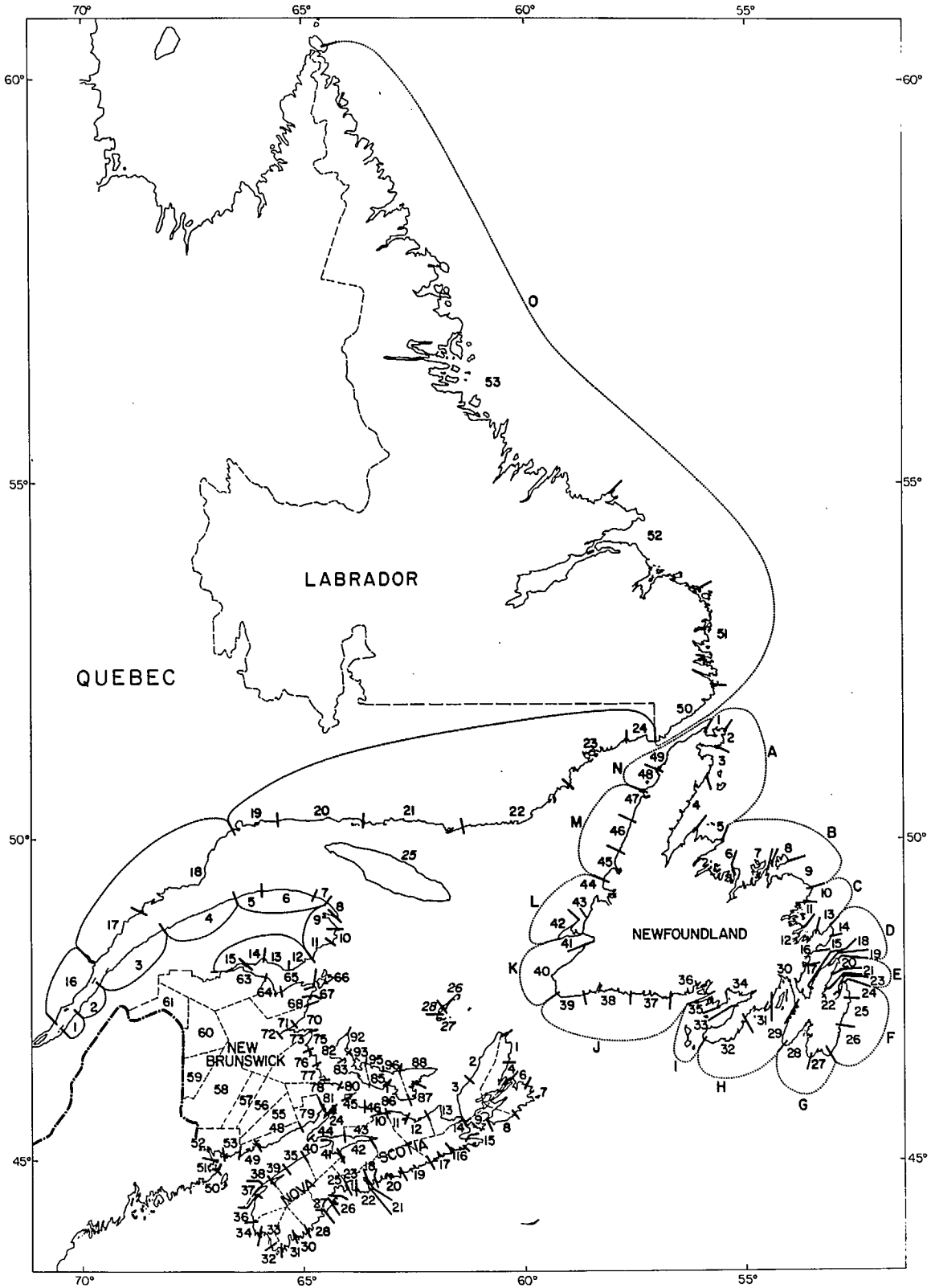


Figure H.7. Statistical districts used in detailed catch/effort data for Maritimes Region (1967-77).

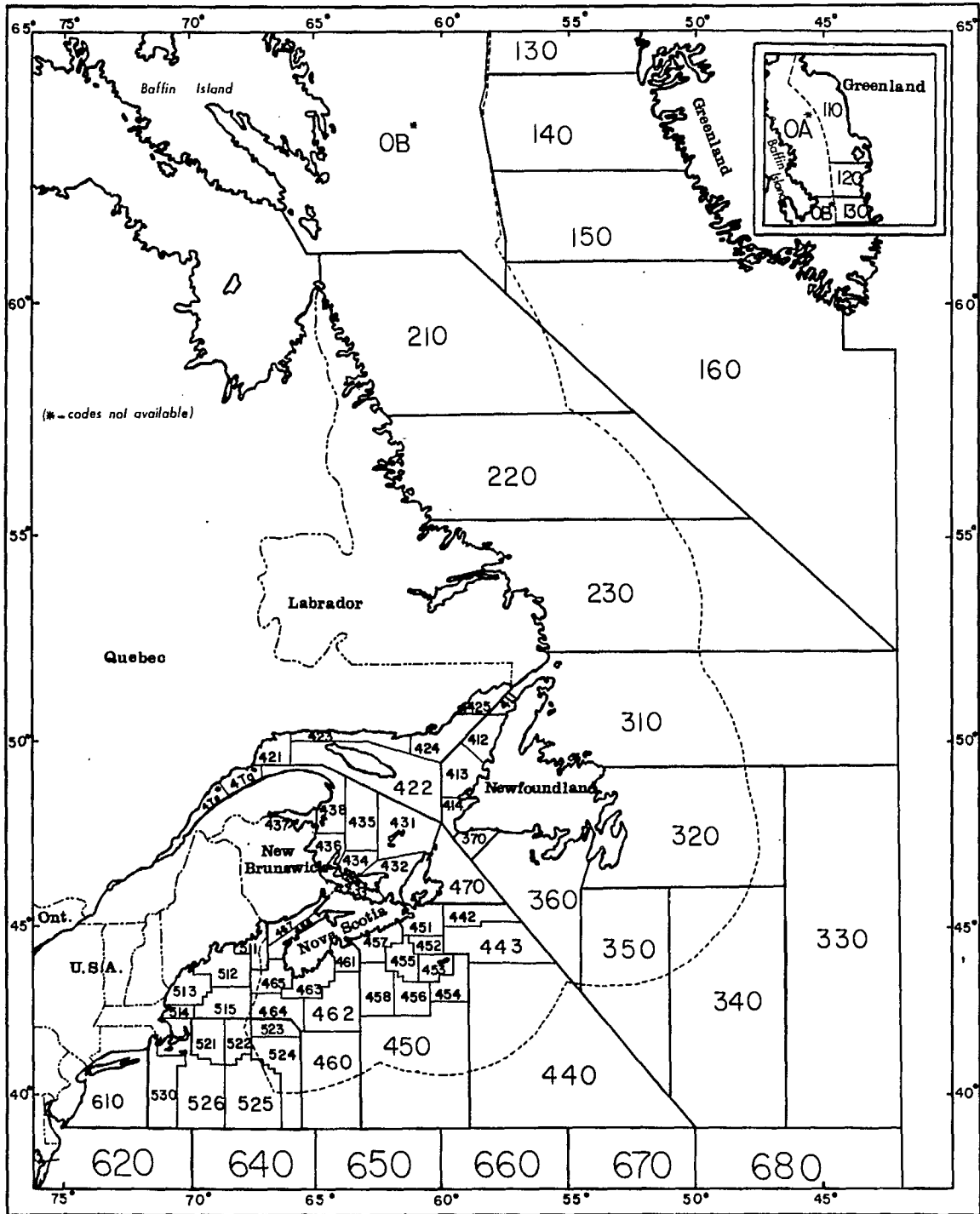


Figure H8 - The valid NAFO and unit areas with respective numeric coding. Refer to Table H6.

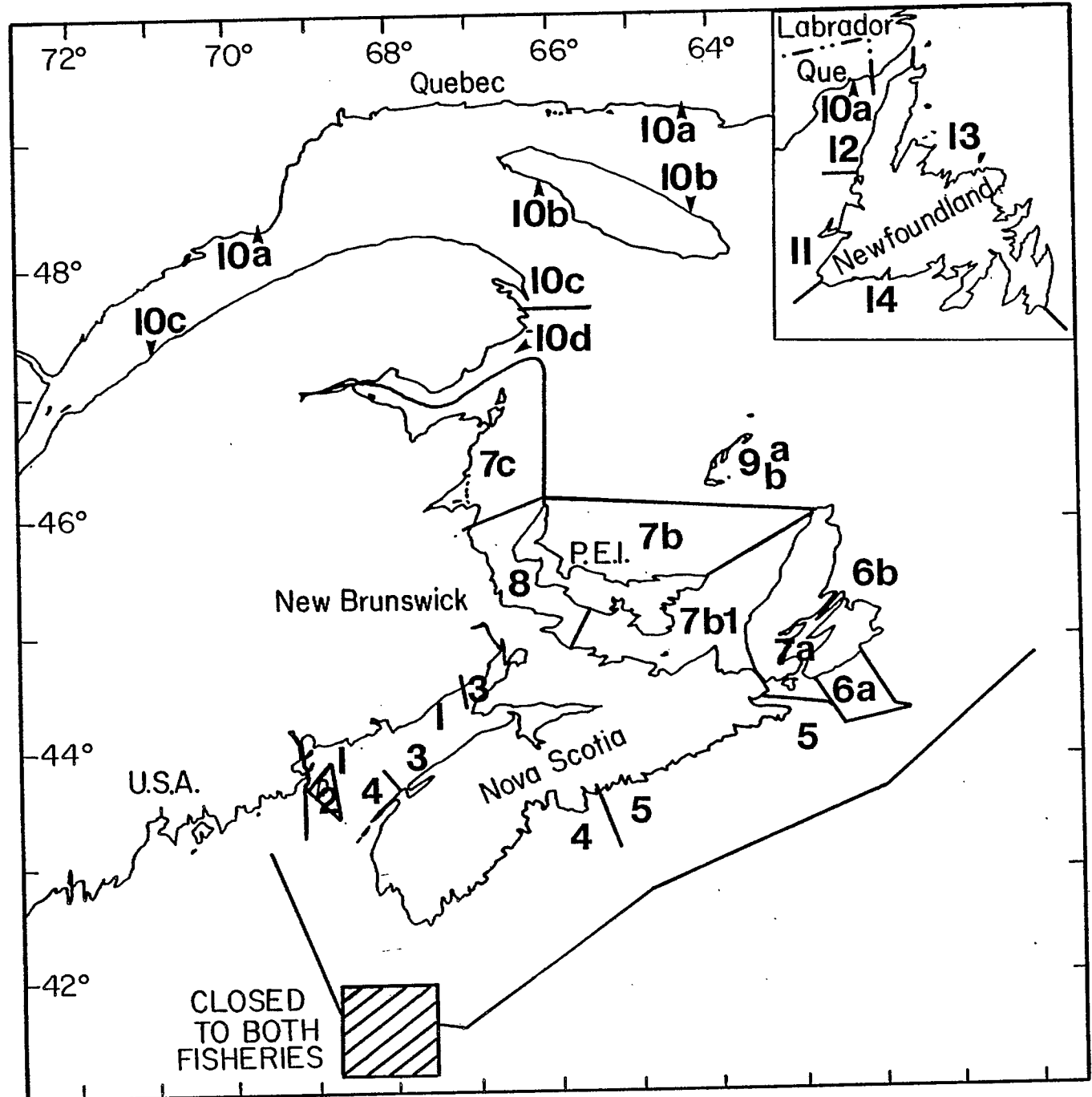


Figure H.10. Lobster fishing districts of the Maritimes, Quebec and Newfoundland.

