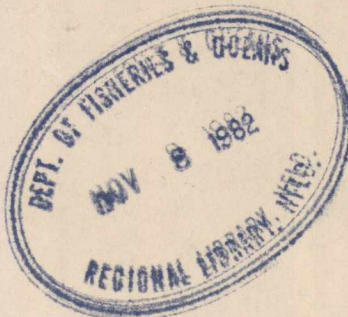




THE COMMERCIAL SPORT FISHING CAMPS OF LABRADOR

(PROMOTIONAL LITERATURE)



n/c

SH
572
N6
C6



Fisheries and Environment
Canada

Pêches et Environnement
Canada

Fisheries
and Marine Service

Service des pêches
et de la mer

Ottawa, Canada, 1977

**THE COMMERCIAL SPORT FISHING
CAMPS OF LABRADOR.**
(Promotional Literature)
Working Inventory Document

Compiled by ---

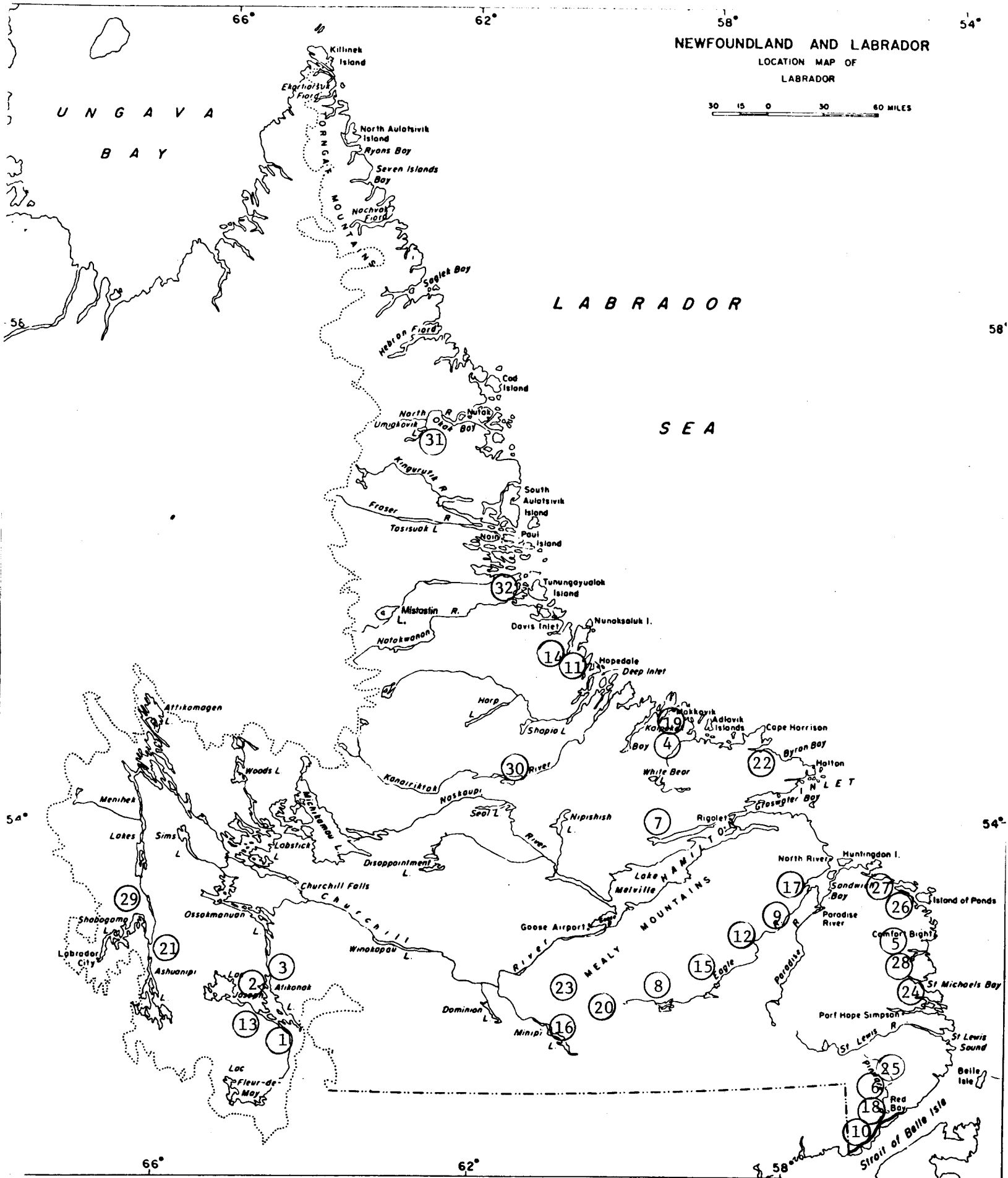
Recreational Fisheries Branch
Fisheries and Marine Service
Department of Fisheries and the Environment

Ottawa, Ontario
1977

LABRADOR COMMERCIAL SPORT FISHING CAMPS
INDEX OF PROMOTIONAL LITERATURE.

- 1 Atikonak Lake Cabin
- 2 Atikonak Lake Camp
- 3 Atikonak River Cabin
- 4 Big River Fishing Lodge
- 5 Black Bear Camp
- 6 Chute Pool Camp
- 7 Double Mer Camp
- 8 Eagle Lake Cabin
- 9 Eagle River Cabin
- 10 Forteau Salmon Lodge
- 11 Hunt River Salmon Camp
- 12 Igloo Lake Lodge
- 13 Kepimits Camp
- 14 Klub Kavisilik
- 15 Labrador Wilderness Camp
- 16 Little Minipi Lake Camp
- 17 Lower Eagle River Salmon Lodge
- 18 Lucky Strike Lodge
- 19 Markland Camps
- 20 Matimek Lodge
- 21 Menihek Camps
- 22 Michael River Lodge
- 23 Minonipi Lodge
- 24 Northland Base
- 25 Pinware Lodge
- 26 Reed's Pond Lodge
- 27 Sandhill River Cabin
- 28 Sea Trout Lodge
- 29 Shabogamo Hunting and Fishing Camp
- 30 Snegamook Lake Camp
- 31 Umiakovik Char Camp
- 32 Voisey's Bay Fishing Camp.

GEOGRAPHIC DISTRIBUTION OF COMMERCIAL SPORT FISHING CAMPS IN LABRADOR.



1. Atikonak Lake Cabin

2 Atikonak Lake Camp

Brochure.

LABRADOR

FISHING

HUNTING



SAUNDERS CAMPS

20 Years Outfitting Experience

P.O. BOX 353

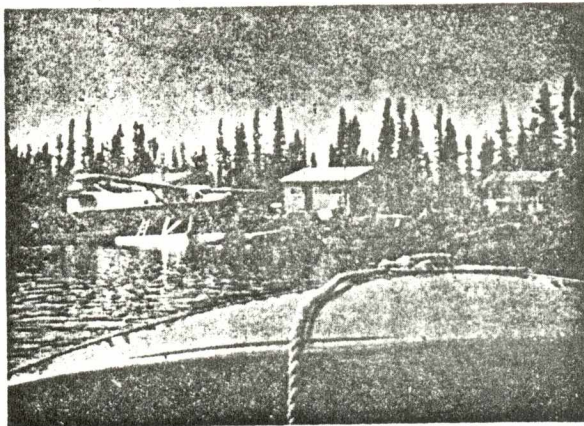
GANDER, NFLD., CANADA

709- 256-8466

Introducing our new hunting and fishing operation at ATIKONAK LAKE, Labrador.

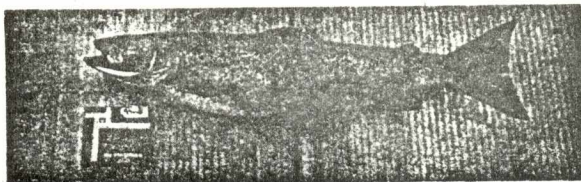
This excellent area has a large river connecting two 30 mile lakes, with many miles of virgin streams with cool clear water. Large Speckled Trout, Quananiche and Lake Trout are plentiful.

Drive to Sept Isle, Quebec North Shore or Jet to Wabush which is 100 miles from camp, and from where guests are taken in by float equipped plane.



CAMP 1973 SEASON

Weekly rates are \$600.00 per person for hunting and \$500.00 per person for fishing and covers the float plane flying from Wabush each Saturday. These rates also cover guide service, food and accommodations. Licences are extra. Baggage allowance is 60 lbs. per person.

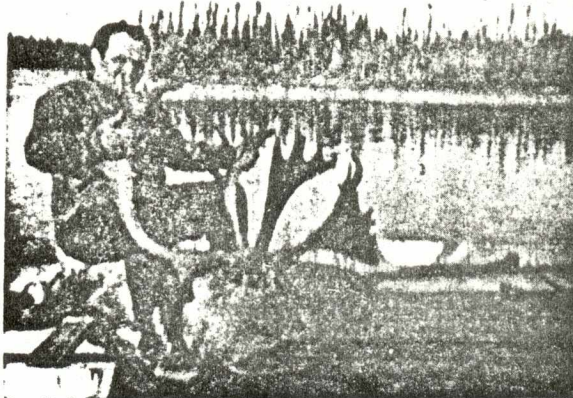


LANDLOCKED SALMON

A BEAUTY



Trophy Caribou are plentiful and can be hunted by boat along the miles of lake shoreline....No walking necessary.



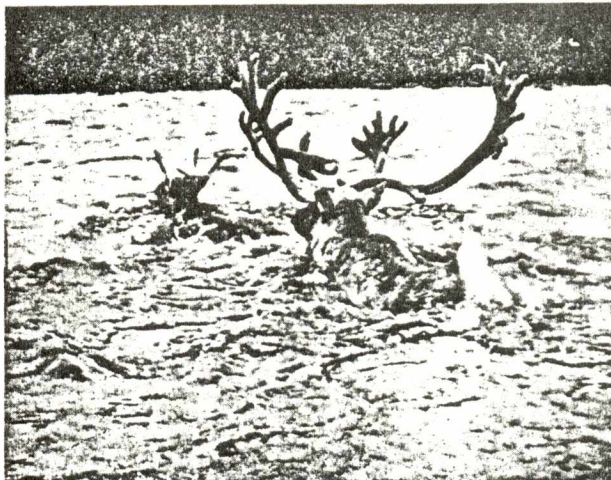
ONE OF 26 FINE TROPHIES
TAKEN IN 1972

GENERAL INFORMATION

The fishing season is from Ice Out to mid September approximately 3 months. Caribou season is usually the last week of August to the end of September. Thus, the three week overlap of hunting and fishing seasons affords an excellent opportunity for the best of Caribou hunting and marvelous fishing in the same trip.

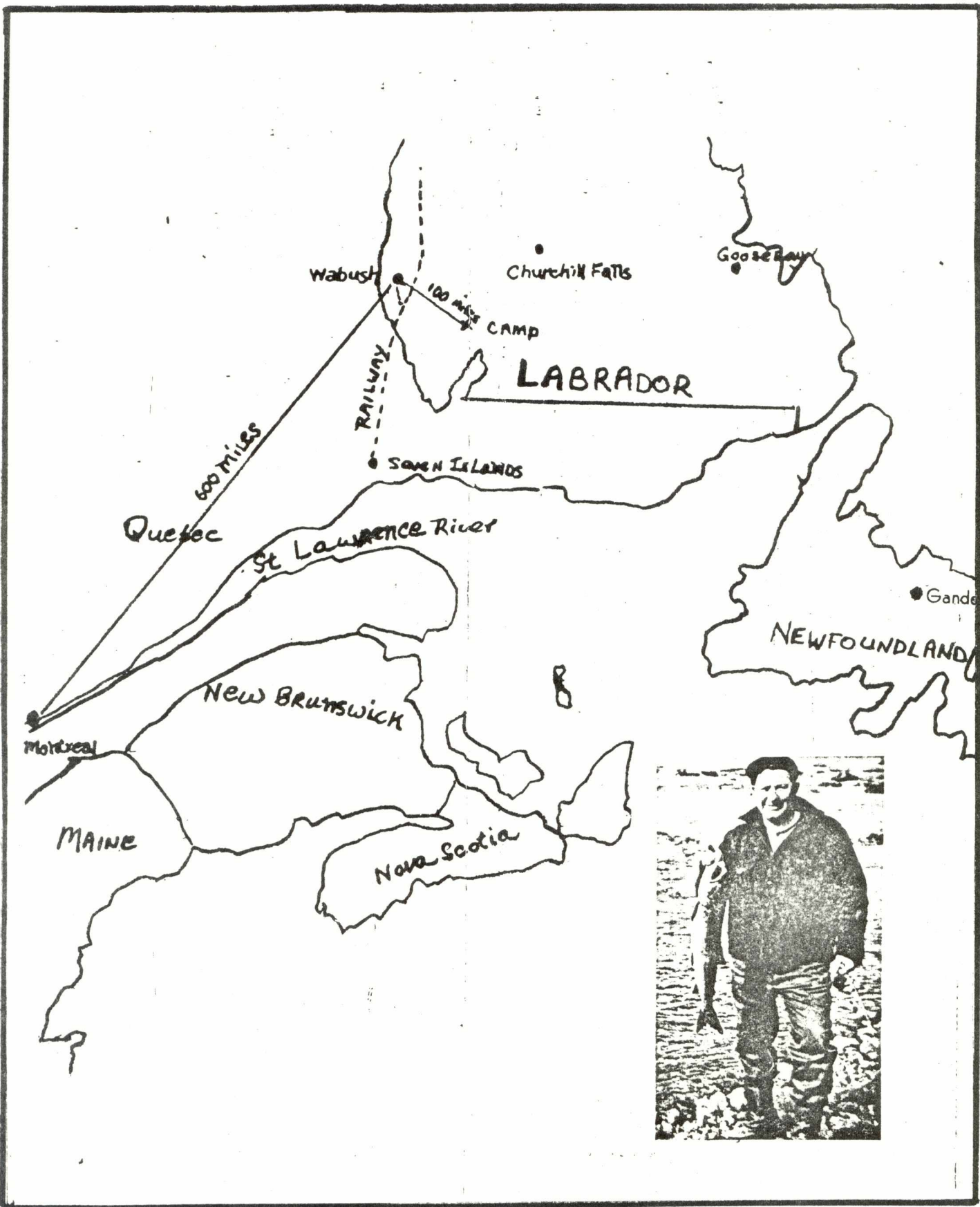
Although it's remote, the two way radio eliminates isolation. Down sleeping bags with changeable liners are provided. Refreshments should be ordered in advance.

The limiting of the Caribou licences is part of the conservation programme of our Government to ensure adequate stocks, and licences should be ordered early. We will order Caribou licences upon receipt of a reservation deposit of \$150.00 and licence fee of \$175.00. Deposit is refundable if 60 days cancellation notice is given prior to start of trip. All rates in Canadian funds.

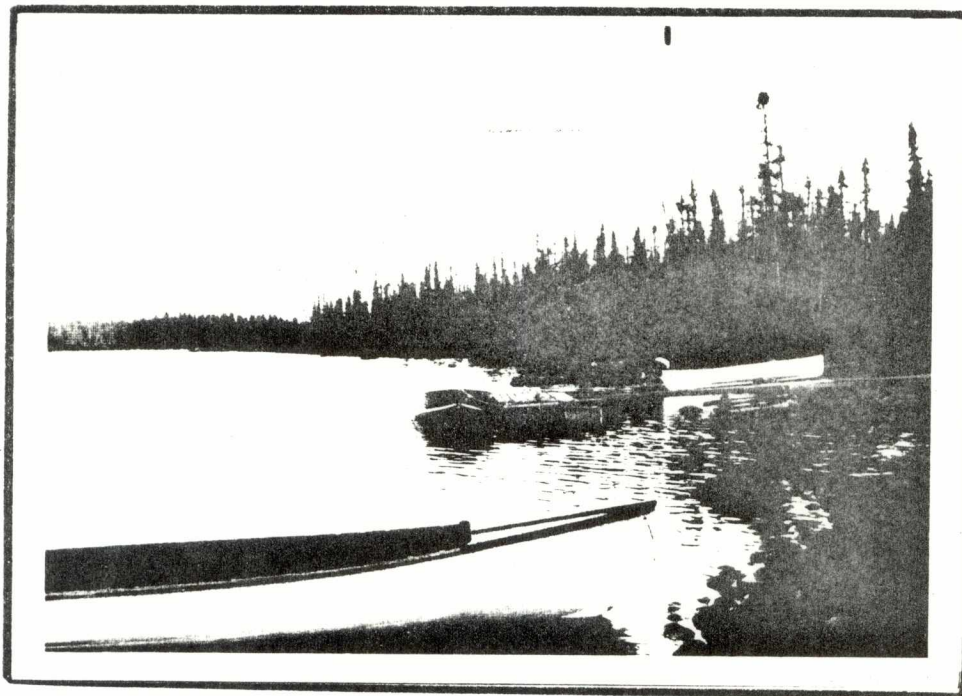
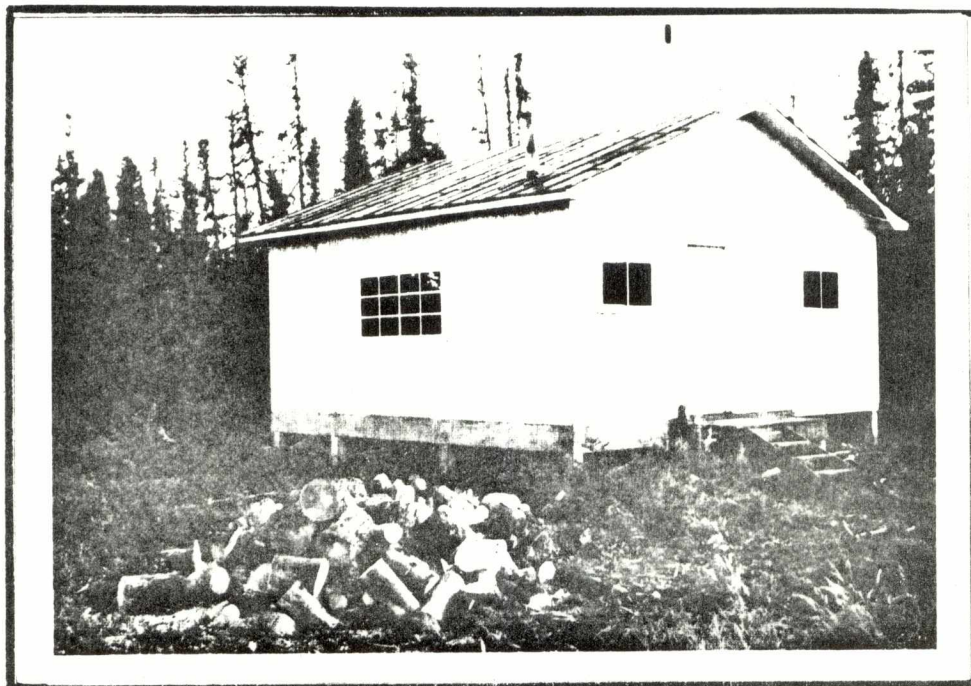


The number of guests is limited and is never more than six at one time.

Dates are available on request. Drop us a line and we'll arrange a trip to remember in this remote paradise.



Pictures.



3. Atikonak River Cabin

4. **Big River Fishing Lodge**

Brochure.



Big River
Fishing Camp

BIG RIVER, LABRADOR



OPERATED BY

R. W. SKINNER
LAKELAND MOTEL LTD.
Pasadena, Newfoundland, Canada



PHONE 686-2242
AREA CODE 709

Big River

One hundred twenty miles North East of Goose Bay Airport, Goose Bay, Labrador and completely inaccessible except by float equipped aircraft is a river known as Big River.

This river drains a very extensive lake system, the two largest lakes being about forty miles long, on its north bank; and a vast number of smaller lakes on its south bank, at White Bear Lake it gathers up all its tributaries, becomes a large body of water and heads east to the Atlantic Ocean some forty miles away.

Because of its enormous watershed, coupled with the late disappearance of snow in the high surrounding mountains and the heavy timber growth along its valley, a very plentiful flow of water is maintained all through the months of July and August until the rains come again late in August and September. This is not particularly true of several Rivers in North East Labrador which, because of smaller watersheds and sparsely timbered valleys have a quick runoff in July resulting in low water for a greater part of August.



Through a series of very rough rapids runs and deep gorges extending over some five or six miles midway in its journey to the sea, the river hurries off the high country into a wide, heavily forested valley where it breaks into a chain of long deep pools and moderate rapids. The last such rapid occurs about five miles from the sea, here the river is broken into a number of channels by islands built up over the years by its own effort. It is here on the North Bank overlooking a smooth flowing and spent river we have constructed our lodge.

I first fished this river in the summer of 1965 and 1966 on an exploratory basis. In 1967 a lodge was constructed and fishing guests were accommodated for the first time. The lodge has been in operation every summer since that time and the fact that many of the guests return again and again is positive proof of the fine fishing for Atlantic Salmon and sea run Trout that can be experienced here.



Accommodation

The Lodge is of permanent construction of the log cabin type consisting of kitchen, dining-living rooms, bath rooms with flush toilets and showers, guest rooms and guides quarters. Hot and cold water, electric power. Comfortable beds, spring mattresses, linens and bed clothes etc., are supplied.

In addition to the Main Lodge, we have additional accommodation as follows. At the mouth of Big River some five miles from the Main Lodge a smaller river flows into Stag Bay. This river has a falls close to its mouth so that fish, salmon, trout, congregate in large numbers below the falls, awaiting favorable conditions to go over and continue their journey up stream. At the mouth of this river we have tent camp accommodations for overnight visits to this smaller river. Each member of a party visiting the main lodge is given an opportunity to spend at least one night at this smaller river. More time may be spent here if so desired.

Fishing Season

The Atlantic Salmon usually enters this river the first week in July and the last run of fish, the male grilse usually put in an appearance about Aug. 25. The latest date that I have accommodated guests is Sept. 4 in 1969. On that date five fish were taken the largest being 8 lbs.



The appearance of sea run Trout is usually about one week later than the Atlantic Salmon and can be taken at will from about July 10, on.

The largest salmon taken to date was 22 lbs. and the largest sea-run trout 7½ lbs. The proportion of salmon to grilse is about fifty to fifty.

Rattling Brook which flows into the estuary of Big River is a tremendous piece of trout fishing water but the closeness of the falls to the sea limits the fishing area to one pool with accommodations for two to three rods. sea-run trout and Atlantic Salmon accumulating here is enormous. However, the Atlantic Salmon proves to be very difficult to hook in this particular piece of water. I have persistent anglers who spend a great deal of time here each summer and are usually rewarded with some fine salmon.

Refrigeration

In the 1970 season, we constructed an ice house where fish are chilled rather than frozen, thus giving a better product for peo-

ple to take home. In passing, we must emphasize that while we realize that a fisherman does like to have fish to take home as a tangible result of his trip we trust that most of our guests are sportsmen and will most likely return the bulk of his fish to the river again, unharmed. If this river is attracting the sportsmen I think it should, then the Atlantic Salmon in these waters will be treated like the aristocrat that he truly is. After all, do you come just to get fish, or to go fishing, to enjoy the river, the magnificent scenery and location, the isolation, the good air, the lodge in the wilderness, of which we are very proud, the companionship of the other members of your party, the cook and the guides who will knock themselves out to please you?



Transportation

Eastern Provincial Airways operates a jet service daily Goose Bay - Montreal. The float plane charter flight Goose Bay - Big River is operated by Labrador Airways, Goose Bay, or Nfld. and Labrador Air Transport Box 3, Corner Brook, Nfld.

Fishermen are advised to contact Eastern Provincial Airways salesmanager, Gander, Newfoundland, Canada for help in setting up a flight schedule. The flight Goose Bay - Big River takes about one hour, so that guests are usually ready to go fishing by 9 a.m. of the day they leave Montreal.

Landing site

The only accessible landing area on the river is a piece of flat, slow flowing water just down stream from the first pool (six miles from the river mouth). Here the river is fairly wide, free of sandbanks and shoals, and giving a good landing area for float planes. Opposite this landing area and on the North bank of the river at an elevation of about 100 feet is the location of our new Lodge.

Personal gear

The gear that you will need to bring is your fishing gear, waders, fly repellent, rain wear, medium weight underwear, woollen socks and warm jacket and pants. In these Northern Latitudes the temperature may be quite comfortable in mid-day but will be cool early morning and late evening.

Fly repellent was not needed after July 15th last year but I think you would be well advised to bring some along as conditions may be different this next season. Also, I received some complaints last year because towels were not supplied and some guests did not bring any with them so this is a reminder that you are expected to bring your own towels. Remember this is a wilderness camp, not a motel or hotel and I think it much more convenient for guests and for me to have people provide their own towels. This is without doubt wilderness, the only people to visit the river last year, apart from the Wild Life officials, were the people I put there.



In Summary

The Big River has truly virgin water awaiting the Angler and FISHING which even though you may be an old experienced fisherman, will give you many thrills as it did me even after twenty years of fishing practically every river on the island of Newfoundland and many along the coast of Labrador. The wooded valley, the long deep pools, the fast water, the vastness of the country, the stunning silence and the isolation of the area will give you something to remember long after your visit is over. If you have been in the North Country then you will know the feeling

which is mutual to all who travelled the North.
If you make one trip to this country then it
will grow and grow on you until you must
return again.

If you do take a fishing trip to the North
Country then I would hope that you book
with us, but wherever you fish — GOOD
LUCK and GOOD FISHING.

Sincerely,

R. W. SKINNER



Printed by

COMMERCIAL PRINTING LTD.
Corner Brook, Newfoundland

5 **Black Bear Camp**

6 **Chute Pool Cabin**

Brochure.

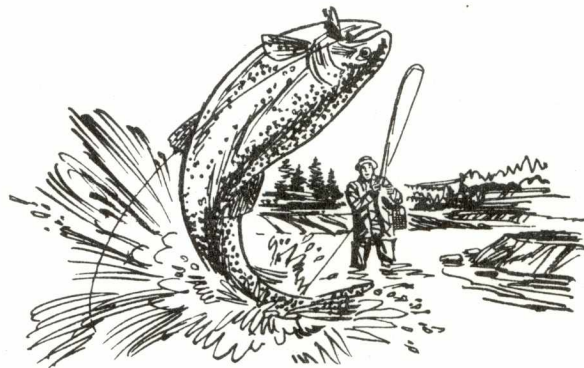
**ATLANTIC
SALMON FISHING**

at the

Chute Pool Cabin

**PINWARE
and
COUNTY CAT
RIVER**

LABRADOR



1975

THIS IS YOUR GUIDE TO BETTER FISHING

TRANSPORTATION

To reach Pinware and County Cat, also Forteau River, you must contact Eastern Air Lines; from there they will advise you can travel by air to Newfoundland and to Labrador. These Airlines have offices in many parts of the U.S.A.

You can also drive to Pinware by car as there is a Ferry on the Straits of Belle Isle. This ferry crosses twice daily. Leaving St. Barbe on the Newfoundland coast at 7:00 a.m., arriving Blanc Sablon at 9:15. Leaving again at 2:00 p.m., arriving Blanc Sablon at 4:15. The cost by this ferry is \$6.00 for a car and driver, \$1.75 for adults.

There is an airstrip at Blanc Sablon, if you wish to come in your own plane, about 40 miles from Pinware, but can pick you up by car from there.

Aviation gas can be purchased at the airstrip. You can also land by float plane at Forteau Pond.

Newfoundland Air Transport operates a flight from Deer Lake to Blanc Sablon or Forteau. Rates are \$48.00 per person. Chartered flights are available anytime. Stephenville, Blanc Sablon or Forteau, Wigtreon and Beaver \$452.00, Cessna \$271.00, Air Com-mando, \$360.00 Beaver, \$216.00 Cessna. These services have proven very well the past season.

Gentlemen:

This booklet is prepared to provide you with all the information you may need to plan a fishing trip to Labrador.

My cabin is 24 x 64 with five double bedrooms, dining room, recreation room with oil heat, two bathrooms with porcelain bath tub, toilet and sink and shower. Full length screened verandah. The rest of the cabin contains our kitchen facilities and refrigeration with freeze compartments and ice cubes, a deep refrigerator and electricity. Section windows and doors are well screened.

Can accommodate 10 persons.

The fishing this past summer was fantastic, it was one of the best years since 1963. Very few fishermen came to the Pinware, due to the fact the good fishing was not known, therefore the fishing was excellent.

Most of the fishing is done by wading but boats are available. There were a number of pools discovered during the past two years which are easily fished by sportsmen. Large salmon were in abundance this past summer, brook trout also were in great numbers.

Pinware and County Cat is one of the best rivers in North America, excellent pools, salmon are teeming. Quite a number of pools have been discovered this summer.

RATES

My rates are \$60.00 per day. This includes meals and lodging. Guides, transportation to and from the cabin are included in the rate. Any special trips other than this are extra. Ladies are welcome at the cabin, and accommodations are available for couples. Transportation provided to and from your place of arrival and departure, either at Forteau or Blanc Sablon.

Each person making reservation must forward his cheque for \$100.00 and make reservation as early as possible.

I have two cooks and a waiter on my staff. The very best cooking and the very best in food is provided, including live lobsters and live clams. Beds and bedding are the best.

EQUIPMENT

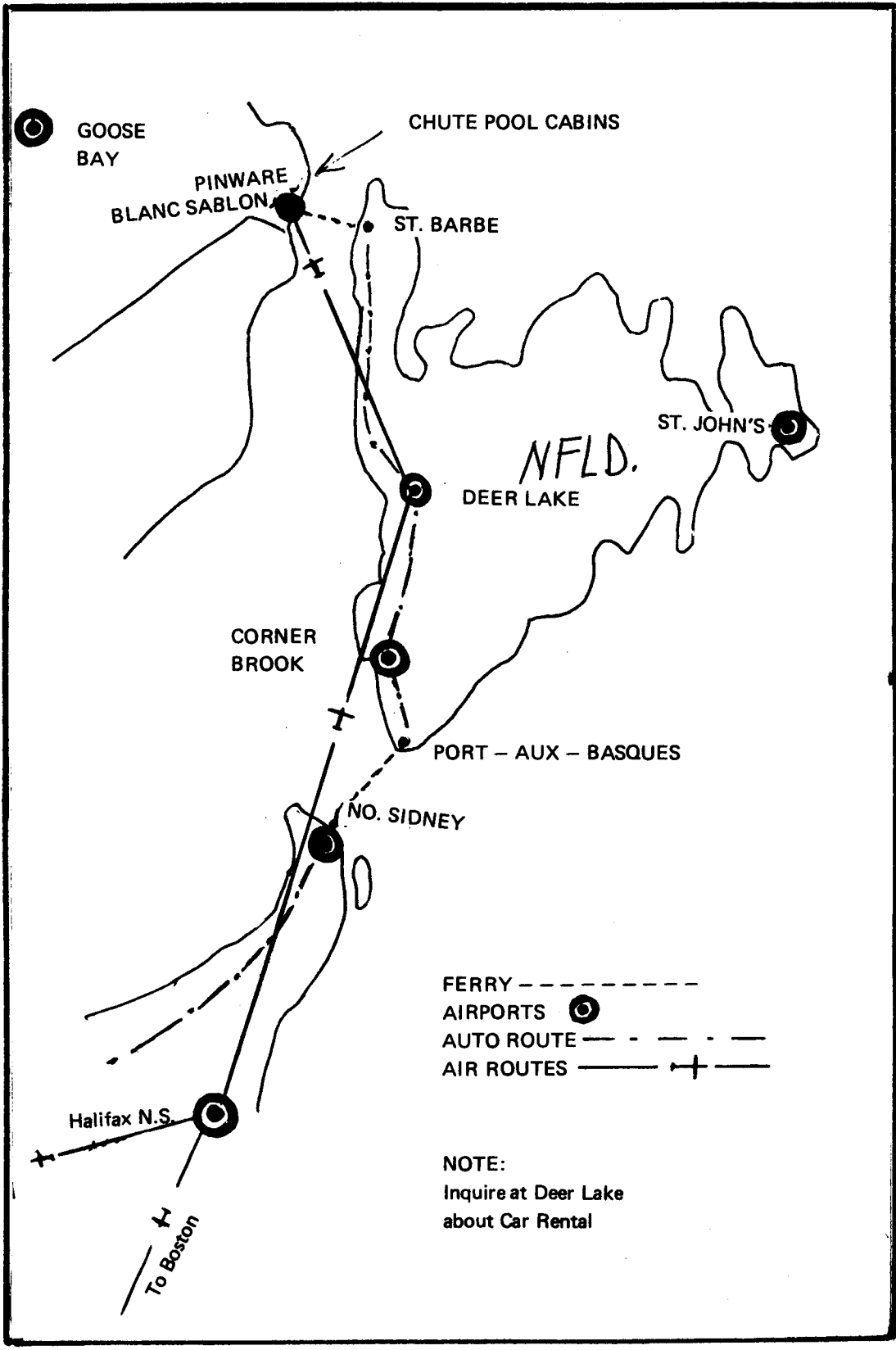
You can bring warm clothing, such as rainproof coat, rubber boots or waders, heavy socks, fly repellent, extra leaders and lines. Your fishing licence is available at the cabin: \$20.00 for 14 days. I can supply all flyhooks, required for Pinware, at the cabin.

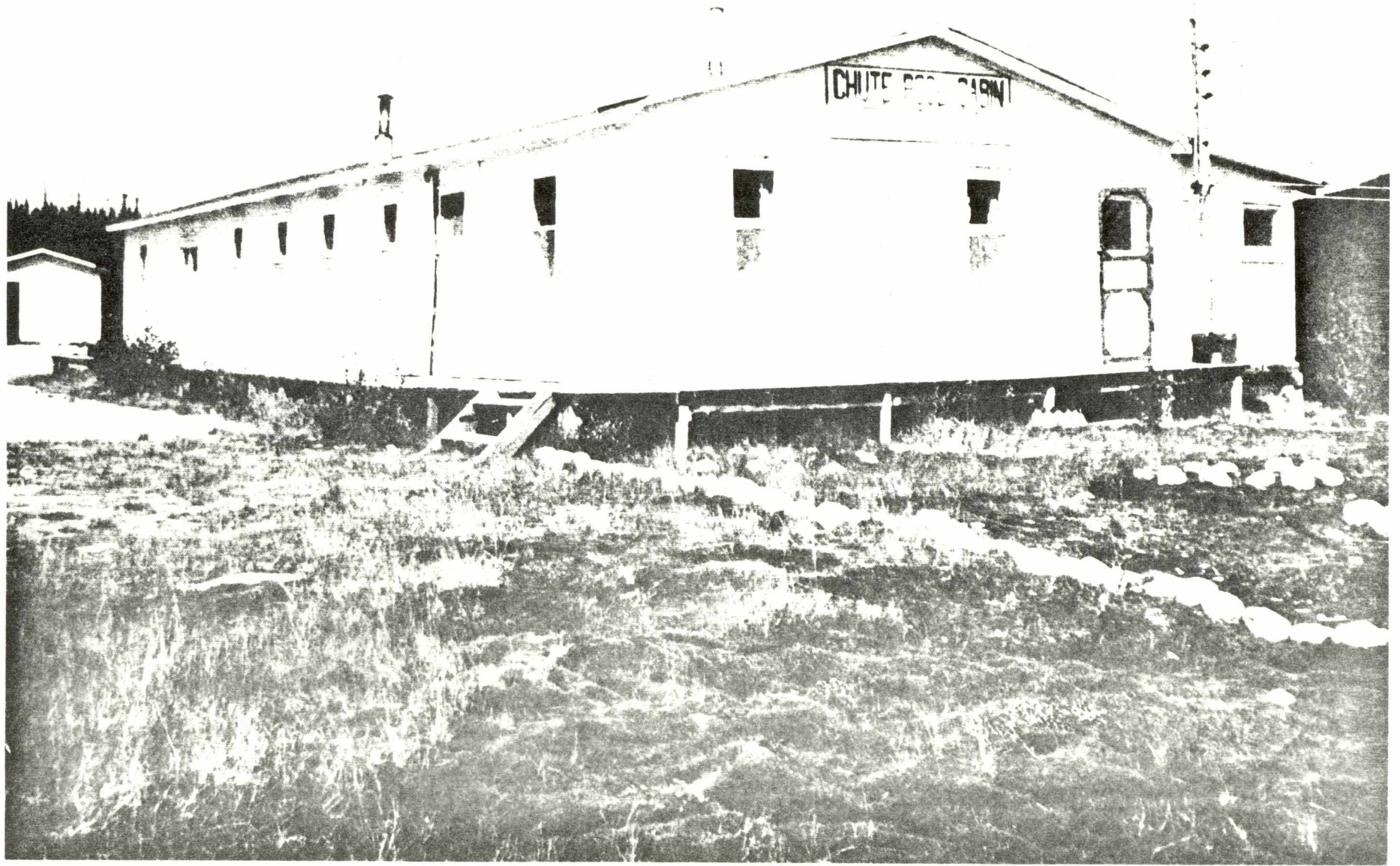
SUGGESTIONS

There is one thing that I would like to make clear, that is, if you are one or more days late in arriving you still have to pay for the full time which you have booked with us. On the other hand if you are one or more days late in going out owing to bad weather, this is on the cabin. I want only my own, no more, no less. Please remember our season is only short, operating costs are high. One day lost hurts.

If you have been planning a fishing trip to Labrador for some time do not delay this any longer as time is running out for us and it's probably later than we think it is. Why not join my many customers where they have had an enjoyable trip. For the past nine years our camps have been catering to sportsmen. The best fishing so be smart and get your share. Wishing you and yours the very best of good health, good luck, and good fishing.

Mrs. Pearl Hancock
370 Steeles Avenue, East
Apartment 210
Brampton, Ontario





7 Double Mer Camp

Brochure.

FISH on BEAUTIFUL

DOUBLE—MER

DOUBLE MER CAMP

Double Mer Camp is situated at the mouth of the Double—Mer River. The aura of roughness and unspoiled beauty of Labrador is maintained in Double Mer Camp. You will find cabins heated by rustic wood stoves and a log cabin cookhouse to help you enjoy the peace and tranquility of nature herself.



GOOSE BAY

FISHING

The waters of beautiful Double—Mer are a fisherman's dream. There are many spots on the river suitable for quiet, relaxing fishing. Using either a fly or spinner, you can catch salmon, trout and arctic char.

THE CAMP

Double—Mer Camp has three bunkhouses. Two of these are log cabins and the other is a framed-in 10' x 12' tent. The cookhouse is a log cabin, 20' x 26'. Every attempt is made to make it as comfortable as possible without destroying the sportsmen's excitement of being in the woods.

RATES

Our rates are \$480.00 for six days. This includes transportation to and from the camp, meals, accommodations, fishing guides and canoes. Guests will be responsible for their own accommodations at Goose Bay, fishing licenses and any personal extras you may wish to have. Transportation costs to Goose Bay are also the responsibility of the sportsman.

* Prices subject to change without notice.

PHONE OR WRITE

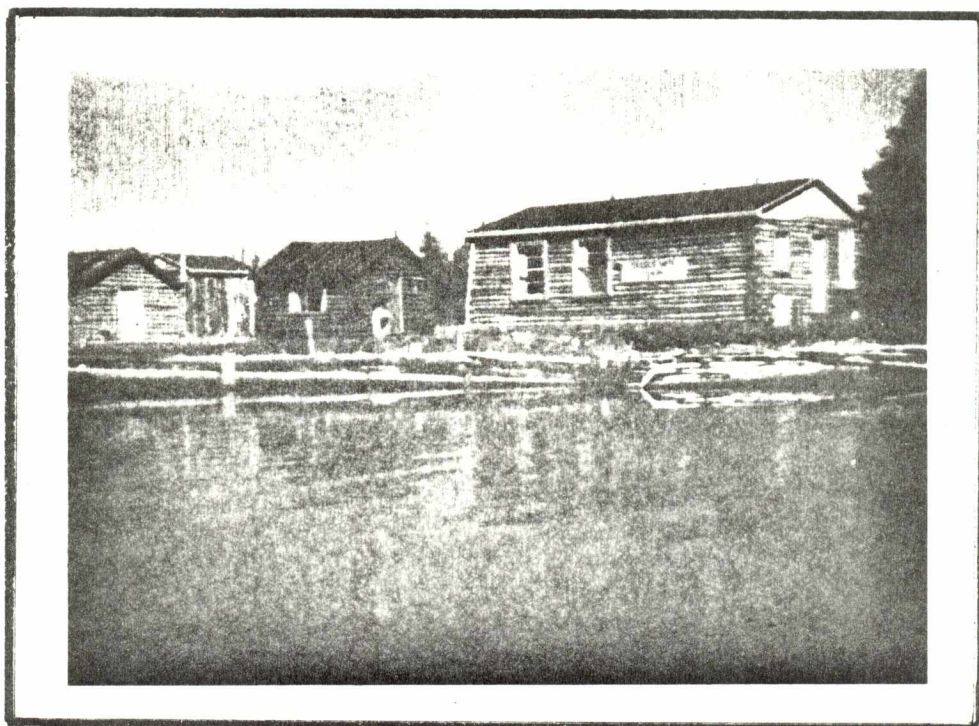
For more details contact:—

George Michelin,
Double—Mer Camps,
P. O. Box 238,
Happy Valley, Labrador
Newfoundland, Canada

TRANSPORTATION

You should make arrangements to fly in to Goose Bay. Eastern Provincial Airways has a daily air service to Goose Bay. Once you arrive, we will make all the arrangements to get you to Double—Mer. In Goose Bay, you may stay at Hotel Goose.

Pictures.



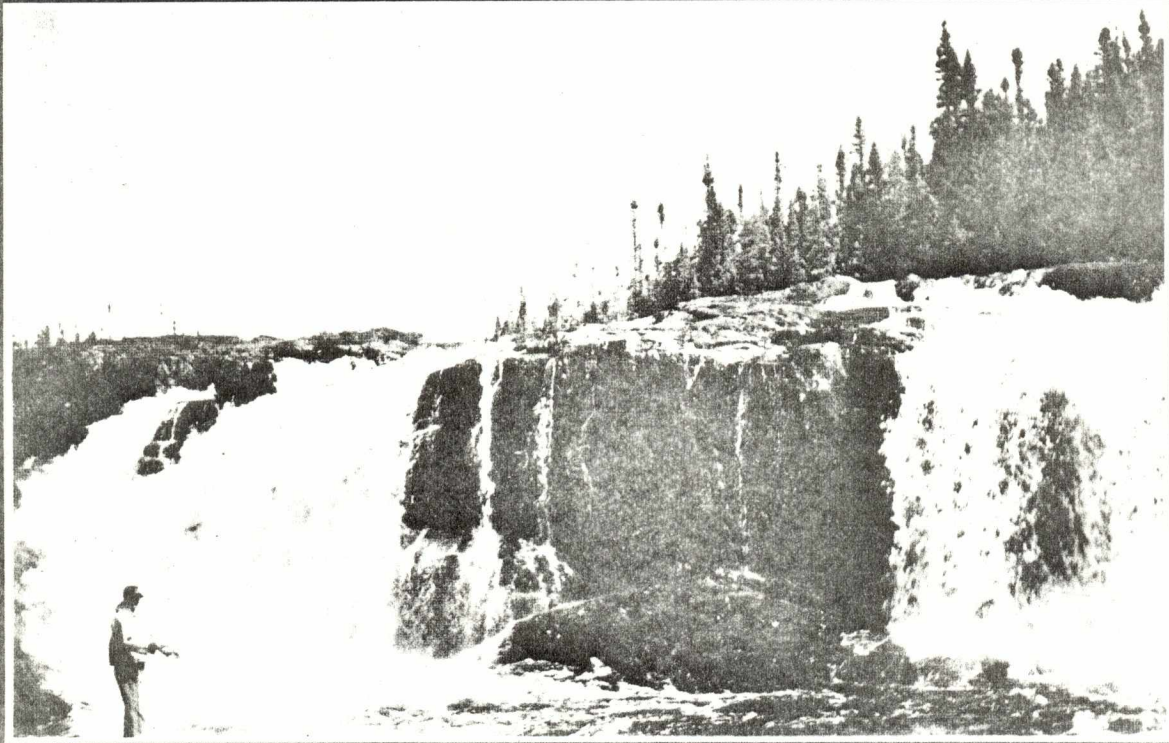
8 Eagle Lake Cabin

Brochure.

Fishing in

Labrador

the Last Frontier



YOUR HOSTS: GOOSE BAY OUTFITTERS LTD.

SPECKLED TROUT = ATLANTIC SALMON = ARCTIC CHAR

General Information

HOW TO GET THERE — Our fishing trips start and end at Goose Bay, Labrador. The best routing from most points in the U.S.A. is via Eastern Provincial Airways' daily Boeing 737 jet service from Montreal. Flying time is approximately two hours, and as of this writing round trip air fare between Montreal and Goose Bay is \$180.00. We will arrange local floatplane transportation to connect with your arrival in Goose Bay. Six passenger Otter, four passenger Beaver, and two passenger Cessna 180 aircraft will be used. **Goose Bay Outfitters reserves the right to ship cargo on aircraft travelling between camp and Goose Bay.** This will be done on a space-available basis and generally involves items needed at camp.

RESERVATIONS, DEPOSITS AND PAYMENT — In order to reserve space, a 30% deposit is required. Deposits are refundable with a written notice of cancellation 90 days prior to your scheduled arrival. The balance of your payment is payable **in Canadian funds** upon your arrival in Goose Bay. The current exchange rate will be applied. Generally, camps are booked on a weekly basis only.

NOTE: Floatplane operation in and out of Goose Bay is subject to visual flight rules. **Goose Bay Outfitters, Ltd., will not be responsible for accommodations at Goose Bay made necessary by poor flying weather. Your rate will not be reduced if for any reason your arrival at Goose Bay is delayed or if poor flying**



weather prevents your going directly to camp upon arrival. By the same token, you will not be charged for extra time spent at camp due to inclement weather. Accommodations are at a premium in Goose Bay during the summer months, and while we will do our very best to secure quarters on short notice, we cannot guarantee any will be available.

TROPHIES — You will of course catch fish in such numbers that the great majority will be returned to the water unharmed to fight another day. However, should you choose to retain one of your fish as a trophy mount, we will be pleased to ship it for you to The House of Learo, in Montreal, an excellent taxidermy service. Should you have a favorite taxidermist of your own, we will pack your trophy for you in a box suitable for the purpose at nominal cost.

Goose Bay Outfitters, Ltd. is the largest and finest company of its kind in the province of Newfoundland & Labrador. We have been serving anglers from all over the world since 1968. We specialize in conscientious service and the finest fishing in the world for Atlantic salmon, brook trout, and Arctic char. We cordially invite novices and experts alike to join us for an unforgettable angling experience in the unspoiled wilderness of Labrador. Alma, Peter, and I are looking forward to meeting you, and if you have any questions, please do not hesitate to write or call. Tight lines.

*Alma and Peter Paor
Bruce Raymer*

Equipment Recommended for Salmon Fishing

Waders or hip-boots are absolutely necessary, and the felt-soled types are highly recommended. Also, bring plenty of warm clothing, to include wool socks, shirts, and rainwear. Polaroid sunglasses are a great advantage to the angler, and of course they'll protect your eyes from glare during your long days astream. Be sure to bring a pair along.

It's difficult to suggest rods, reels, lines and flies to a seasoned salmon angler. For the neophytes among you, however, we have some suggestions which will give you some idea what to bring in the way of tackle. Most of our anglers are comfortable with glass or graphite rods of eight to nine feet designed to cast weight-forward eight, nine or ten lines. The weight-forward sink-tip lines are useful at times, but are not necessary. Leaders should be about nine feet long and range from six to twelve pound test. Reels should hold your line plus 150-200 yards of backing.

We've listed some flies that have done well for us in the past. You don't need all of them, or any of them, if you already have a selection of favorites. If you have no flies at all, choose six or seven of the wet flies and four or five dry flies, and have a qualified professional tie you a half-dozen of each in various sizes.

Wet flies: Blue Charm, Hairwing Onset, Atherton Squirreltail, Pale Torrish, Ackroyd, Orange Charm, Minktail, Green Butt, Arndilly Fancy, Hairwing Highlander, Orange Blossom, Black Fitchtail.

These are Ernest Schwiebert's superb hairwing patterns from **Art Flick's Master Fly-Tying Guide**. They should be tied **sparsely**, semi-low water style, on hooks from size two through ten. We consider the Black Fitchtail, Hairwing Highlander and Orange Blossom in size ten almost necessary, with the other flies very useful at times as well. Other flies that have



done well include the Hairwing Thunder and Lightning, the Butterfly, the Lady Caroline (a Spey pattern which is deadly at times), and the Muddler Minnow. Dressings for the last four flies can be found in Joseph Bates' **Atlantic Salmon Flies and Fishing**. The Muddler is excellent wet or dry. If you plan to use it as a dry fly, try having it tied quite thickly on #8 Wilson dry fly hooks. Some effective dry flies:

Gray Wulff, White Wulff, Royal Wulff, Rat-Faced McDougall, and Hairwinged Black Gnat in sizes 6-10. Bomber, sizes 2 and 4, on 4x long streamer hooks. Whiskers, size 4, 6 or 8 tied on 4x long streamer hooks. Skater Fly, size 12. Be sure to bring one of the last three mentioned dry flies. They're designed to be fished with intentional drag, are lots of fun to use, and have been very effective. Their dressings are found in the Bates book mentioned above.

If you have further questions concerning the equipment you should bring, please do not hesitate to write or call.

Eagle Lake Trout Fishing Lodge

Our beautifully located lodge lies at the fast-flowing thoroughfare between two small lakes. The fishing is excellent in the rocky, wadable areas directly in front of camp, and of course lake fishing from a boat is available as well.

The Eagle Lake system forms a considerable portion of the headwaters of the Eagle River. While all of the waters in this watershed are freestone, limestone-like slicks are numerous, and they are a joy to the dry-fly fisherman. Within a short distance of camp, one can fish in virtually any type of water he prefers, from the smoothly-flowing slicks to chuckling riffles and swirling pools in the best tradition of the freestone stream. And best of all, Eagle Lake's waters are filled with big, brawling specimens of **salvelinus fontinalis**, the beautiful Eastern Brook Trout. The fish at Eagle Lake average between two and three and a half pounds, with some fish reaching four pounds. The largest fish taken at Eagle Lake in 1974 weighed 7½ pounds, but fish of this size are not common. For those

of you who enjoy exploring, there are many areas reachable by boat from camp which we have not as yet had an opportunity to try ourselves. If you'd like to try some perfectly virgin trout water, this is an excellent opportunity to do so.

For those of you interested, as we at Goose Bay Outfitters are, in the lore of the sport of angling, you will be fishing the area in which **salvelinus fontinalis** first appeared millions of years ago. Today, Labrador is the last stronghold of this most magnificent specie, as civilization has violated most other parts of its range. Labrador's trout are inherently longer-lived than trout found elsewhere, and are thought by biologists to attain a maximum age of about ten years, or double the maximum age of trout outside a few areas in Northeastern Canada. Ecologically, Eagle Lake's trout population is in perfect balance with the trout's major predator in this area, the Northern Pike. The pike, which sometimes weigh over 20 pounds, keep the trout from overpopulating, and the result of

this natural predation is a large number of well-fed, oversized brook trout. Because these fine trout are an integral part of what we consider a rather fragile ecosystem, we must insist that conservation be foremost in your mind when you fish at Eagle Lake. **Fly fishing only** is a strictly enforced camp rule, and though you may catch as many trout as you like, you may kill only two. We hope you recognize and appreciate the wisdom of our camp policy.

Our accommodation at Eagle Lake is a lovely double-A frame lodge, complete with shower, indoor plumbing, hot and cold running water, and comfortable beds with inner-spring mattresses. At dinnertime we'll pamper you with home-cooked meals made with the very best foods obtainable. Many of our meats are in fact special ordered and shipped directly from Montreal. After dinner, you are cordially invited to relax in our cozy living room, where there's an old-fashioned wood-burning stove that crackles and pops as you relive your day of fishing.



Communications with the outside world are possible via the modern radio-telephone equipment at Eagle Lake Lodge. The camp accommodates six anglers at once, and for every two anglers there is a boat, a guide and a motor.

Eagle Lake's fishing is the most consistently excellent of any of our camps. From ice-out in the spring until the last day of the season, the action is very fast all day every day. We're sure you'd enjoy the fishing at Eagle Lake, and we'll do our very best to insure the other details of your trip are well-attended to also.

Suggested Trout Fishing Equipment

Fishing rods, reels, lines and flies are so much a matter of personal taste that we hesitate even to suggest anything. An outfit which I personally enjoy using for most of my fishing is an eight foot bamboo rod with a double taper number six floating line. Early in the season, before mid-July, I've found fast-sinking lines very useful, and later in the season sink-tip lines have done well for me when the trout were not interested in surface food. Though I prefer double-tapered fly lines most often, there have been times when I could have used a forward taper line and six more inches on my fly rod. So—you'd be well-advised to bring two fly lines, a sinking one and a floater, and two rods, one for delicate work and one for pushing flies out over wind-swept water. Nine foot leaders of Ox through 4x are fine, though you may wish to go shorter if you plan on fishing deep or with nymphs. All of which brings us to the fascinating thing at the business end of all this complicated equipment, the fly. I've found that most of the fly patterns I used successfully in my twenty years of fishing for trout in the northeastern United States work very well here in Labrador. So—if you're an experienced angler, please don't think that because you'll be fishing in Labrador your fly inventory needs a major overhaul. Your brook trout favorites will produce strikes as well here as

they do on the familiar waters you normally fish. For the novices among you, I've compiled a list of my favorite flies. If you choose three or four patterns from each category (streamer, wet, dry, nymph), and buy a half dozen of each in various sizes, you'll have more than an adequate number of flies for a week of fishing. Wet flies: Coachman, Royal Coachman, Dark Cahill, Gold Ribbed Hare's Ear, Wooley Worms (in black, yellow and green), Blue Dun, and Black Gnat. The so-called flymph patterns developed by Jim Leisenring for Pennsylvania's brown trout fishing work very well here in Labrador. They are described in the book by Leisenring and Vernon Hidy, **The Art of Tying the Wet Fly and Fishing the Flymph**. Wet flies should cover a range of sizes from 6 to 14.

Streamer flies: Mickey Finn, Hornberg, Little Brook Trout, Black Nosed Dace, Muddler Minnow, Spuddler Fly, and Yellow Marabou Muddler. These streamer flies, with the exception of the Spuddler, are fully described in Joseph Bates' book, **Streamer Fly Tying and Fishing**. The Spuddler Fly is described in Joe Brooks' book, **Trout Fishing**. The Mickey Finn is a necessity if you fish before mid-July, and it's good other times as well. The Muddler is excellent wet or dry. Keith Fulsher's Thunder Creek series is fairly



new to me, but I had excellent results with his Marabou Shiner last year. Give it a try. It's described in his book, **Tying and Fishing the Thunder Creek Series**. Your streamers and bucktails should range in size from size four through ten, with the greater number in the medium sizes.

Dry flies: Hairwing Royal Coachman, Gray Fox Variant, Adams, Irresistible, Quill Gordon, Gray Wulff, Blue Dun, Light Cahill, and Skater Fly. Your dry flies should range from size 10 through 16, with just a few of the smaller flies "just in case". Be sure to bring along a couple of Edward R. Hewitt's Skaters. They can be deadly on the big brookies up here, and they're lots of fun to use. They're described in chapter 7 of Charles K. Fox' book, **This Wonderful World of Trout**. Harry Darbee's version is shown in A.J. McClane's **Standard Fishing Encyclopedia**.

Nymphs: Our trout waters support very large populations of aquatic insects. Caddis worms, both white and green, stonefly nymphs, and various dragonfly and mayfly nymphs are present from the beginning of the season to its end. Ted Niemeyer's nymph and wet fly patterns, described in **Art Flick's Master Fly-Tying Guide**, are superb. They are the Atherton

Medium, Niemeyer Caddis, Catskill Coiler, and Badger and Peacock. Some other excellent nymphs: Montana, Gray Nymph, Hare's Ear, Isonychia Nymph, and Golden Stone. Most of your nymphs should be sizes 8 and 10, with the Montana, Isonychia and Golden Stone tied about 2x long. All of these nymphs are described and pictured in **McClane's Standard Fishing Encyclopedia**. And by all means, have a few nymphs to size 16.

Chest waders or hip boots are absolutely necessary. And this is Labrador, remember, and while most of our summer days are pleasantly warm, we do have cold snaps now and then. So bring plenty of warm clothing, to include wool socks, flannel shirts, a parka or wind breaker, and rain gear. Polaroid sunglasses are a boon to the angler. Be sure to bring a pair.

If you have any questions on required equipment, please do not hesitate to write or call. Peter, Alma and I will be glad to hear from you.

Bruce Raymer

Peter and Alma Paor have owned and operated Goose Bay Outfitters since 1968. Their forward-looking, conservation-minded camps are models of enlightened management. Peter, who is originally from Montreal, and Alma, a native Newfoundlander, have been year 'round residents of Goose Bay for 17 years. They have three fine children: Paul, a strapping 16 year old, fourteen year old Terry, a budding angler, and Titian-tressed Karen, a pert ten year old.

Bruce Raymer is a newcomer here at Goose Bay. A 1967 graduate of Boston University, he is a fly-tying instructor, an avid fly-fisherman, and an active member of Trout Unlimited, The Atlantic Salmon Association, The American League of Anglers, and United Fly Tiers. Bruce will be spending his summers at camp helping to make your trip a successful one.

Both Bruce and Peter are qualified bush pilots.

Recommendations from Individual Anglers



"As for the fishing, there is nothing like it anywhere on this continent I am sure, and it is probably unequalled in the world."

Richard S. Berry, M.D. (Minipi)
Skowhegan, Maine

"I would like to thank you for the marvelous trip that you provide to the Little Minipi. The fishing was fantastic."

Joshua F.B. Camblos, M.D.
Asheville, North Carolina

"Just a note to tell you how much we all enjoyed the fine salmon and trout fishing on the Eagle River."

Mr. J.A. Armstrong
Toronto, Canada

"Had a party last weekend and served poached char and salmon. They were delicious. . ."

Noel Thompson
Newark, New Jersey

"Your little surprise anniversary party [at camp] was not only very enjoyable but it was awfully thoughtful and considerate of you."

Mr. and Mrs. Winston H. Moore
Boise, Idaho

"Just a note to express my thanks for a wonderful trip and for the hospitality extended to us by everyone we met."

Seth C. Brown
New Hartford, Connecticut

"Please accept my heartfelt thanks and gratitude for making my vacation one to remember forever. . .I have turned over the nine pound brook trout you so carefully wrapped and preserved to. . .one of New England's most respected taxidermists."

Robert W. Storm
Vienna, Virginia

Goose Bay Outfitters, Ltd. has been featured in **True Magazine** (June, 1971) and in various issues of the **Orvis News**.

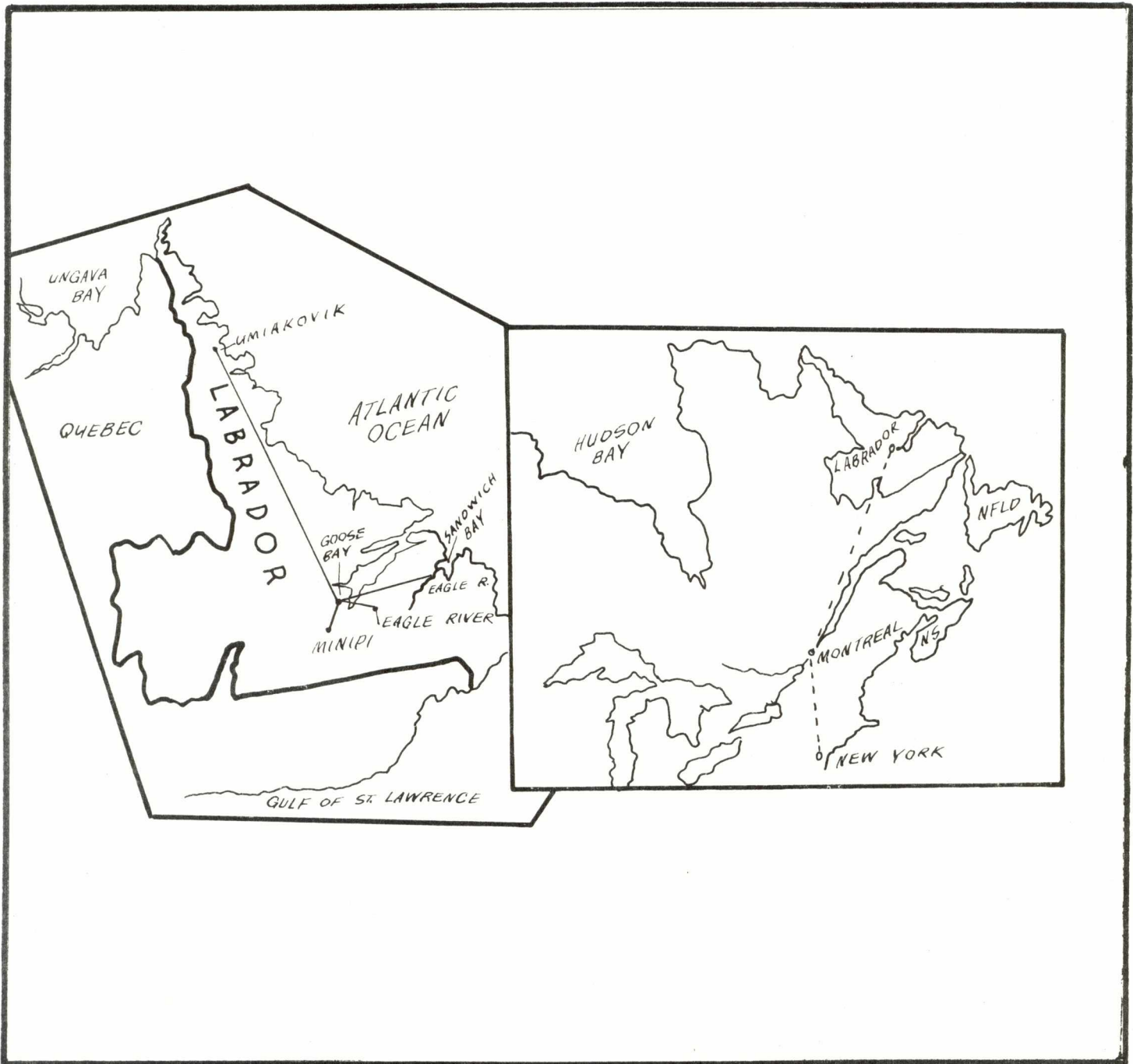


LIQUOR: We do not normally stock this item, but if you need anything in the line of liquor, wine, beer, soft drinks, etc. for your fishing trip simply let us know your needs and we will have them on hand for you. This information would be appreciated when your registration is confirmed or shortly thereafter. Official government liquor price will be sent on request.

BAGGAGE: Maximum baggage allowance between Goose Bay and our camp is 50 lbs. per person. Excess weight cannot be transported due to floatplane load restrictions. This should create no hardships as your street clothes and luggage may be safely stored in Goose Bay until your return.

Please note: Should you be late arriving due to inclement weather or be held in Goose Bay for the same reason, we regret we will be unable to reduce our weekly rate.

RESPONSIBILITY: Goose Bay Outfitters Ltd. acts as agent only for the transportation companies performing services and assumes no liability for acts, omissions or negligence of such companies and shall not become liable in any way in connection with such means of transportation. Your safety is our responsibility after your arrival at camp and therefore you are subject to the house rules of the camp. Under no circumstances are guests permitted to use boats or canoes without being accompanied by a guide.



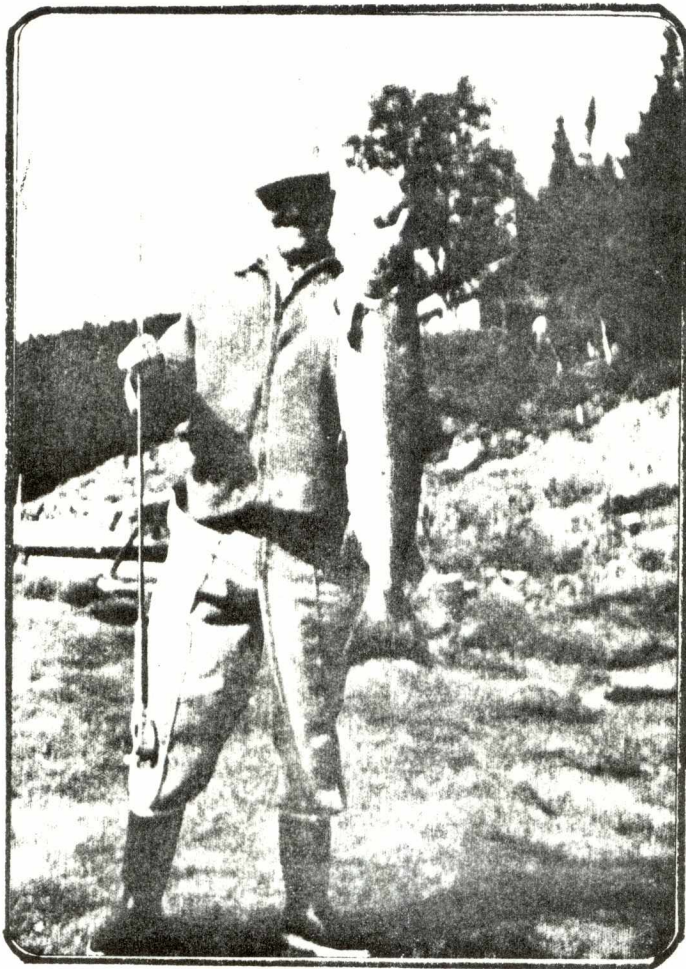


*For Further Information
and Reservations:*

GOOSE BAY OUTFITTERS LTD.
P.O. Box 171, Happy Valley
Labrador, Canada
Tel. 896-3186 or 896-2423. Area Code 709

9. Eagle River Cabin

Pictures.



10 **Forteau Salmon Lodge**

Brochure.

Forteau Salmon Lodge

FORTEAU, LABRADOR SOUTH



For Information and Reservations
write or phone

P. O. Box 307
Corner Brook, Nfld., Canada

Tel: 709-686-2202

Tel: (July 1 — Sept. 10)
Forteau Labrador 709-931-0824

AIR CANADA

Forteau Lodge is a member of the Air Canada Fin, Fur and Feather Club. All expense tours can be arranged through the club. Ask your Air Canada Office or Travel Agent for detailed information and reservations.

FORTEAU RIVER

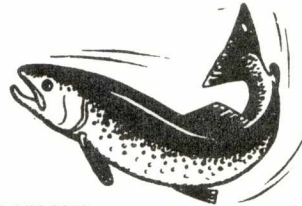
FORTEAU RIVER: is a fly fisherman's dream. If you are not a proficient fly fisherman, we have guides to teach you.

FORTEAU RIVER: is the best salmon stream that we know of in the whole of Labrador. The reason Forteau River has always been filled with salmon from early July until September is because the river has a two mile chain of pools, suitable for both wet and dry fly fishing. There is a falls three miles inland from the lodge, which holds up the salmon until August when high water conditions permit the fish to go over. This means that the river just fills with fish from the lodge to the falls. Fishing starts right by our lodge door at HOME POOL. This pool is ideal for after dinner fishing, or for elderly men who prefer to fish near camp. The pool can take care of four rods.

As a rule we consign a new pool to each angler every day for the seven day stay. Forteau River is twelve miles in length, from the mouth to the feeder (North West Brook), and we have not fished beyond that point. Several miles of this stretch of water offer excellent salmon and trout fishing. We are equipped with boats and motors to cover the entire twelve miles of water.

You may fish several pools by wading, others have to be fished by river boats, each angler is provided with a guide, boat and motor. Forteau is the only river we know of in the Labrador coastal area ideal for men and women in their seventies and older, where there is no hardship whatsoever involved.

The best trout fishing is found nine miles inland at the feeder. You have to walk less than one mile over a good trail, the distance remaining is covered by boat and motor.



ACCOMMODATIONS

We have made quite a number of improvements in our accommodations in the last few years. The lodge is over one hundred feet in length, by thirty two in width, with a full screened-in veranda. There are six double bedrooms, two living rooms, flush toilets and showers, portable electric generators and refrigeration, plus everything else that we can think of for your comfort. We will also guarantee you will enjoy every minute of your stay with us.

We have the only catering lodge on the Forteau River. We have twenty river boats to cover all pools, and fifteen outboard motors. We do not take more than ten anglers per week, so as not to overcrowd the river.

If you want to take home part of your salmon catch, we can have them smoked or frozen at the lodge.

However for conservation and other reasons we must limit the number of salmon to two per person. You can take them either smoked or frozen.

FOOD

Live lobsters brought in from Newfoundland once a week. Fresh Cod, Halibut, Clams and your own fresh caught salmon prepared your favorite way. Beef steaks occasionally and fresh vegetables, especially brought in by the Hudsons Bay Co.

WHAT TO BRING

Bring warm clothing, a rain proof coat, high rubber boots or waders, several pairs of heavy socks, mosquito repellent, leader material, 6 to 10 lb. test, a good floating fly line, fly rod and reel, both wet and dry flies. The best sizes for Forteau in July are eights and tens, for August, tens and twelves. Best patterns in wets, are the Black Silver tips, tied with moose or bear hair. In dries, White and Grey Wulff are very popular. Please bring a fairly good supply. Your fishing will be done with both wets and dries. If you prefer we can have an order made up for you at \$9.00 per dozen.

LIQUOR

Write to me for a government price list. Select your brand, then forward your order to me accompanied by your cheque, add 15 per cent to the total cost to cover express and trucking to Labrador. Your order should be in my hands not later than June 15th.

RATES:**A separate rate sheet is attached**

We have been catering to American sportsmen for many years. We know what you want and what you don't want. You may be offered a slightly cheaper rate by some other outfitter, but please bear in mind that: "It's unwise to pay too much, but it's unwise to pay too little. When you pay too much, you lose a little money, that is all, but when you pay too little you sometimes lose everything, because the thing you bought was incapable of doing what it was bought to do. The common law of business habits prohibits paying a little and getting a lot . . . it can't be done.

There is one fact we should like to make clear — it is simply this, if you are one or more days late in arriving, you still have to pay for the full time which you have booked. On the other hand, if you are one or more days late in going out, owing to bad weather, this is on the house, we want only our own, no more, no less. Please remember our season is very short, and operational costs are very high. One day lost really hurts. When making reservations please give us names and complete home addresses of each member in your party. This is very important.

LICENSES:

Fishing licenses may be purchased at the lodge. The cost is \$20.00 for fourteen days fishing, for all species.

GUIDES:

One guide is provided for each fisherman. Please do not give or sell fishing equipment to our guides or others. And please do not give, sell or lend liquor to any guide, helpers or others. This will do more harm than good. It is permitted, however, to offer your guide one drink after work. It is customary to give your guide a tip if you are pleased with him.

TRANSPORTATION

To reach Forteau Lodge by Commercial Airlines, you must make a connection with Eastern Provincial Airways (E.P.A.) at either Montreal or Halifax. E.P.A. has a daily jet (Boeing 737) service from those points to DEER LAKE, Newfoundland.

From Deer Lake, Newfoundland Air Transport (NAT) provides a scheduled service using a 10 passenger twin engine aircraft to **Blanc Sablon** which is near the Quebec Labrador border. At Blanc Sablon a car will take you the 16 miles to the lodge. At the present time the flights between Deer Lake and Blanc Sablon are twice weekly. An advance reservation for this flight is required and the address is Nfld. Air Transport, P. O. Box 3, Corner Brook, Nfld. Telephone 709-686-2822 or 709-686-2521.

You may also travel in your own aircraft, which many of our clients do. If on floats, you land on a one mile long lake, near our lodge. If on wheels you land at the air strip at Blanc Sablon. The air strip is well lighted, and has a good beacon. We will meet you.

You may also travel by car from any point in the U.S.A. to Forteau, by crossing one hundred miles of water on a good car and passenger ferry, from North Sydney, Nova Scotia, to Port aux Basques, Newfoundland. The cost is around \$35.00. You then drive overland for approximately three hundred miles to St. Barbe, you cross over to Blanc-Sablon, a distance of eighteen miles, on a car and passenger ferry at a cost of six dollars. Then you drive twelve miles by road to Forteau. We only recommend this latter route to those who do not like flying.

If you have been planning a fishing trip to Labrador for some time, please do not delay any longer as time is running out for all of us. It's now probably later than we think. I will guarantee that you will enjoy every minute of your stay, the climate is very beautiful in Labrador during July and August, and you will be surrounded by hospitable and friendly people. It will be a trip that you will not regret.

Henry Sheppard.



Rate Card

Forteau Salmon Lodge

FORTEAU, LABRADOR

Summer Manager: ELI ELSWORTH (Tel: Forteau, 709-931-0824, July 1 to Sept. 10)

RATES — 1975 — (U.S. or Can. Funds).

+ 1976

7 Day Package Trip \$550 per person (Friday to Friday)

4 Day Package Trip \$325 per person (Friday to Tuesday)

\$85 per Person per Day for less than 7 days)

Above rates apply when a guide is provided for each fisherman

A special rate is available when two fishermen share one guide.

Deposit for a Reservation is 20% or \$100 per Person

For Booking Arrangements Contact the Owners:

Harvey Sheppard

P. O. Box 307, Corner Brook, Nfld.

Tel: 709—686-2202

OR

Ed Sharpe

Pasadena, Nfld.

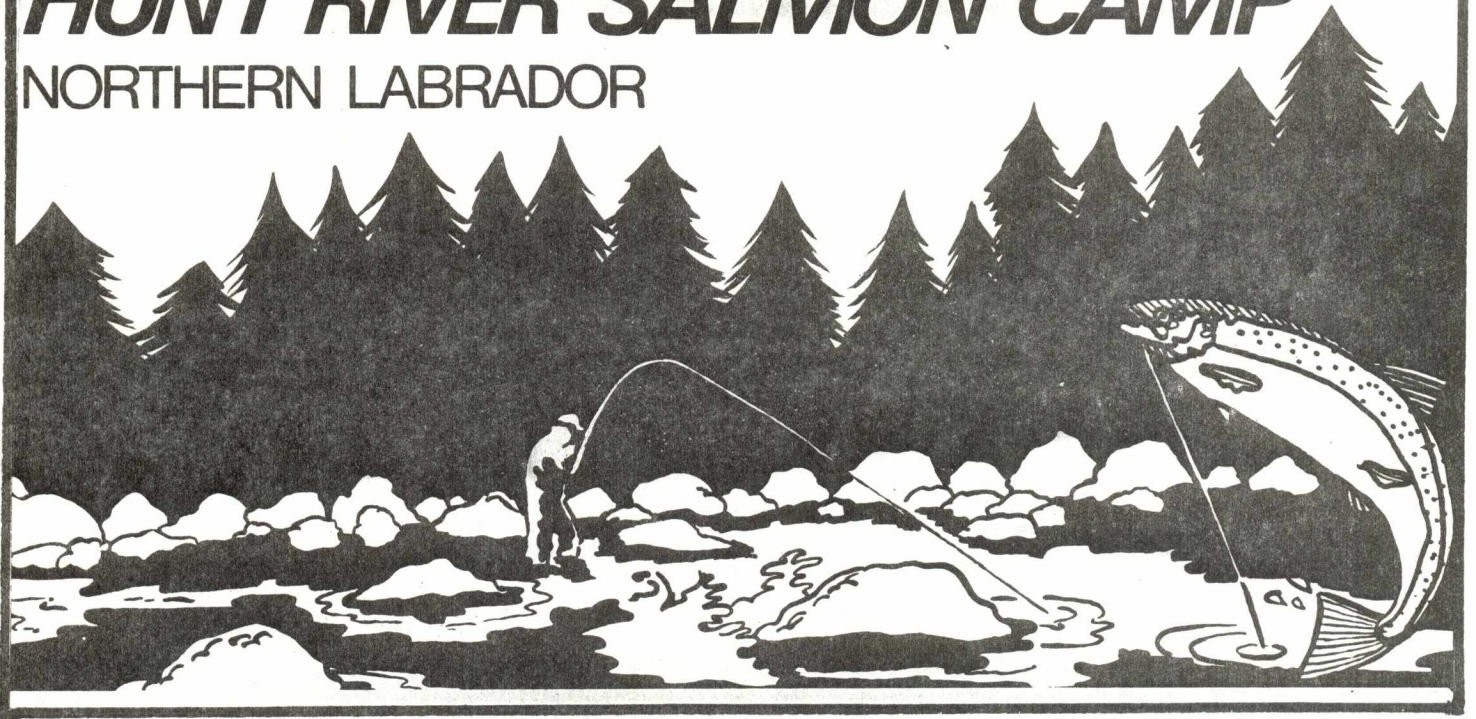
Tel: 709—686-2278

11. Hunt River Salmon Camp

Brochure.

HUNT RIVER SALMON CAMP

NORTHERN LABRADOR

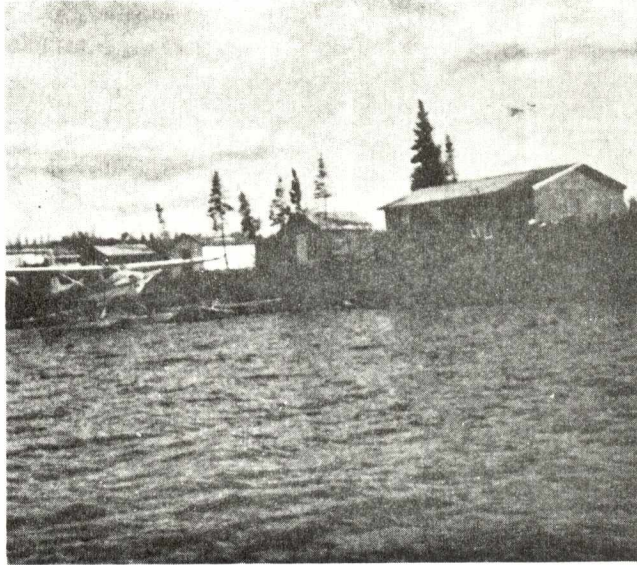


The Hunt River...

One of the most northerly salmon rivers of Labrador, the Hunt flows near the 56th parallel, entering the ocean near Hopedale, 150 miles north of Goose Bay. Compared to other salmon streams, it is a medium size river already known for its large fish. Salmon commonly run around 10 or 12 pounds and may exceed 20 pounds on occasions. Large salmon predominate the catch and very few grilse are taken.

Rock-filled with frequent gravel bars, the Hunt is the type of stream which can produce consistently good fishing throughout its length. Most water can be fished by wading although boats are available for travel and fishing wherever required. Most of the fishing takes place on a series of pools that mark the upper part of the river, only a five-minute boat ride from camp. Here, you can wade, fish from a boat or standing on a convenient rock. A well-marked portage trail along the river bank will take you to the "Big Falls". From there, the central section of the river, consisting of an eight-mile series of pools and rapids, is covered by boat. Along with salmon, you will run into some real good wilderness fishing for speckled trout and Arctic Char.





You Will Be Comfortable...

The camp is located on a lake-like expansion of the main river, some 15 miles from the ocean. The main lodge consists of a kitchen, dining room and lounge. Three two guest cabins are provided as sleeping quarters. Beds have spring-filled mattresses and a plentiful supply of linen and blankets is maintained. A central washroom with showers and flush toilets, propane lighting and refrigeration, fish freezing facilities and radio communication are all available for your comfort and convenience. Our Government licensed guides are dedicated and will only be too happy to share their salmon fishing experience with you. Whenever possible, a Cessna 180 is also based at camp.

Refreshments...

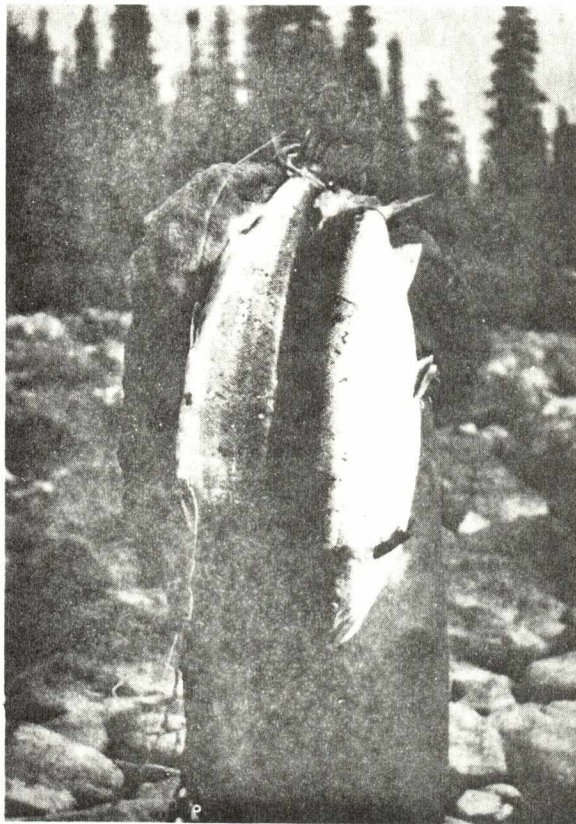
Beer, wine and liquor may be purchased through the local Board of Liquor Control, or we will arrange to make advance purchases if requested. Official price list will be forwarded on request.

Equipment...

It is essential in the changeable climate we experience on the northern Labrador coast that you bring some warm clothes, rain gear, heavy socks, insect repellent, sunglasses along with personal items. Waders (felt-soled) instead of hip boots are preferred by most fishermen. Don't forget your camera and plenty of film to record the highlights of your trip.

You may bring an extra fly rod if you wish. Make sure you carry an extra line or two, lots of heavy and light leader material (6 to 12 lb. test). You should have a fair amount of backing (at least 100 yards) spliced to your casting lines.

The best wet flies for the Hunt are Black Dose, Black Doctor,, Silver Tip (black and green), Green Highlander, Blue Charm and Silver Grey. Dry flies: Wulffs (white and grey), Royal Coachman, Brown Fairy and Irresistible. Size of flies depends on water conditions and may vary from #2 through #10, with #6 and #8 generally used. Most of these flies are available at camp but you should not hesitate to bring your own selection of favorites.



Rate . . .

All-inclusive, except for local floatplane transportation, weekly rate (Monday to Monday) covering lodging, meals, one guide per two fishermen, boats, motors and gas: \$850.00 per person.

Local Air Transportation . . .

Air transportation between Goose Bay and the camp is provided by a local air service with two-passenger Cessna, four-passenger Beaver and six-passenger Otter aircraft on floats. Charter cost of these aircraft, not included in the package rate, is based on mileage flown. Round trip charter between Goose Bay and Hunt River Camp costs \$243.00 per person with the Cessna, \$190.00 per person with the Beaver and \$167.00 per person with the Otter. Whenever possible, we endeavor to schedule parties so the incoming and outgoing groups share the cost of the charters which could mean up to a fifty percent reduction of air transportation charges. The above mentioned charter rates are subject to change without notice.

Chartered aircraft service between Goose Bay and the camp is subject to visual flight conditions. If your arrival at the camp is delayed due to weather or uncontrollable circumstances, the full rate will apply. However, if you are delayed in leaving, the extra time is on the house.

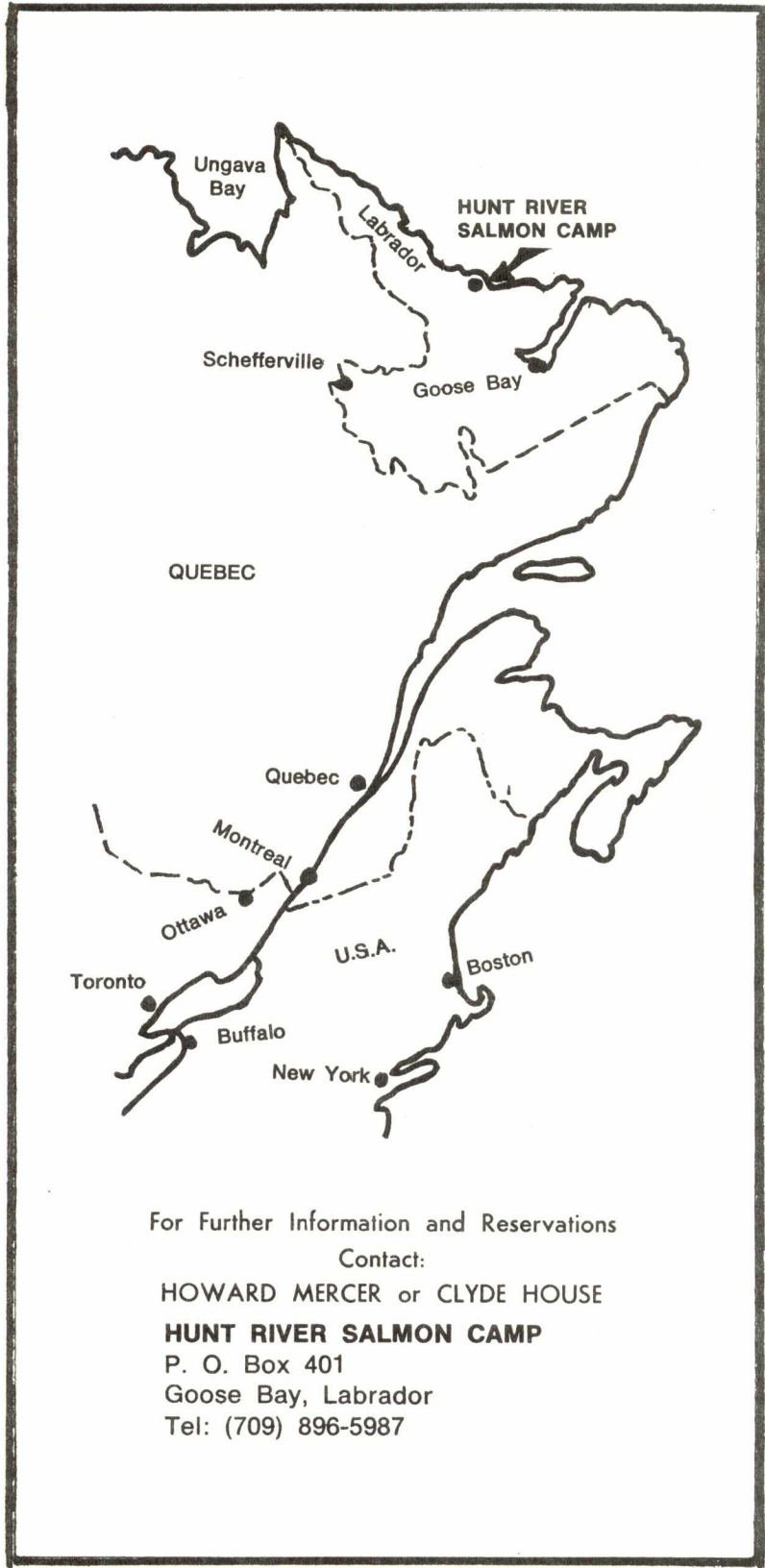
Rate does not include cost of fishing licence (\$20.00 and available at camp) or possible expenses resulting from an overnight stay in Goose Bay.

Reservations & Deposits . . .

Reservations must be made as early as possible. An advance deposit of \$250.00 per person is required with firm reservations and the balance of your payment is to be made upon arrival in Goose Bay. Other than deposits, only cash, certified or travelers cheques will be accepted. Deposits are refundable with a ninety (90) day written notice of cancellation.

Accessibility . . .

Eastern Provincial Airways provide jet service from Montreal to Goose Bay. Summer schedules are usually available in early May and will be provided on request. We meet you on arrival in Goose Bay.



For Further Information and Reservations

Contact:

HOWARD MERCER or CLYDE HOUSE

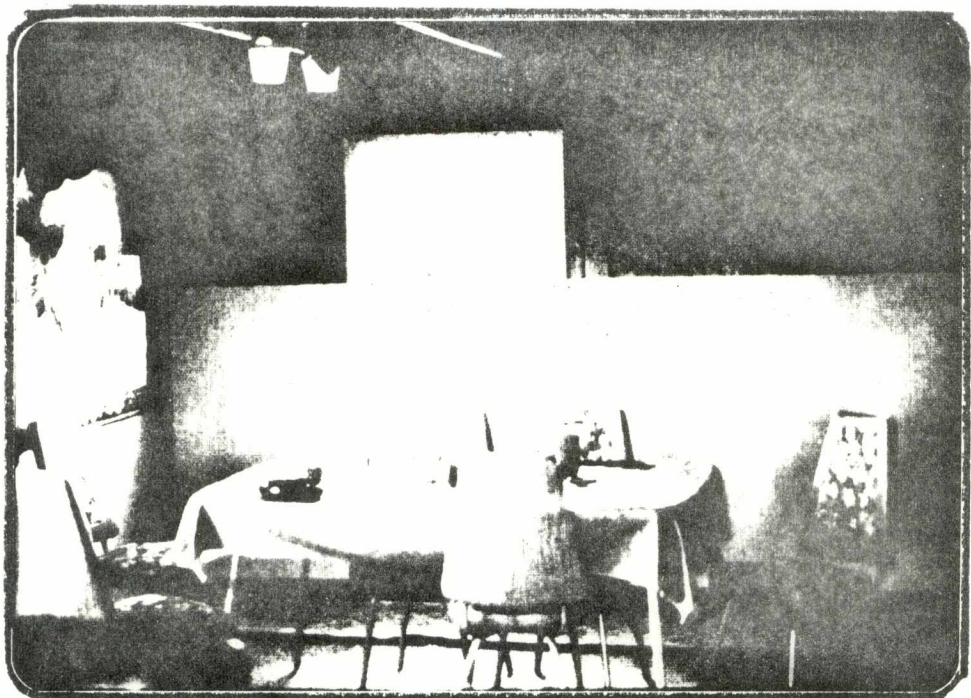
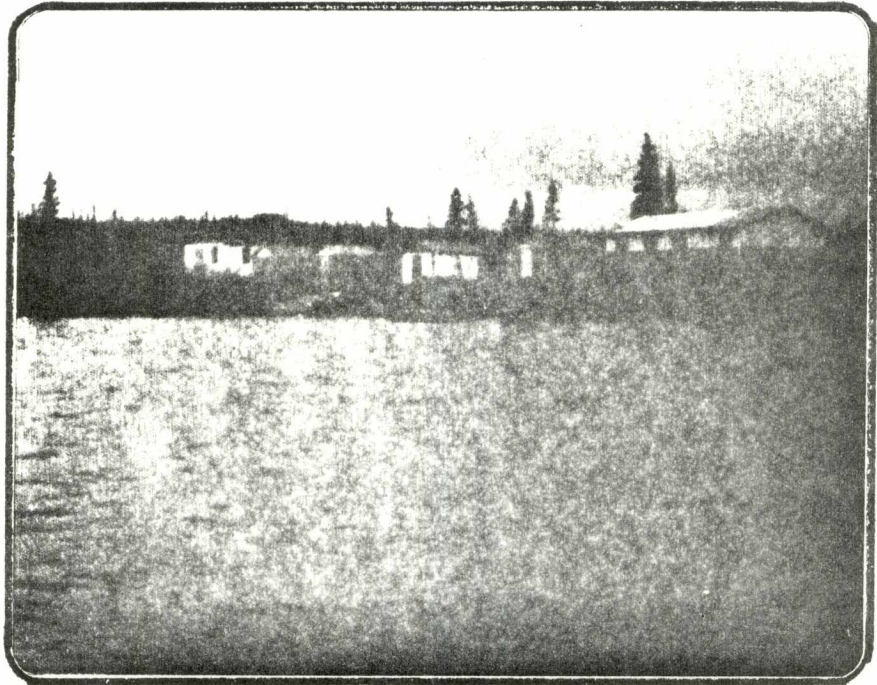
HUNT RIVER SALMON CAMP

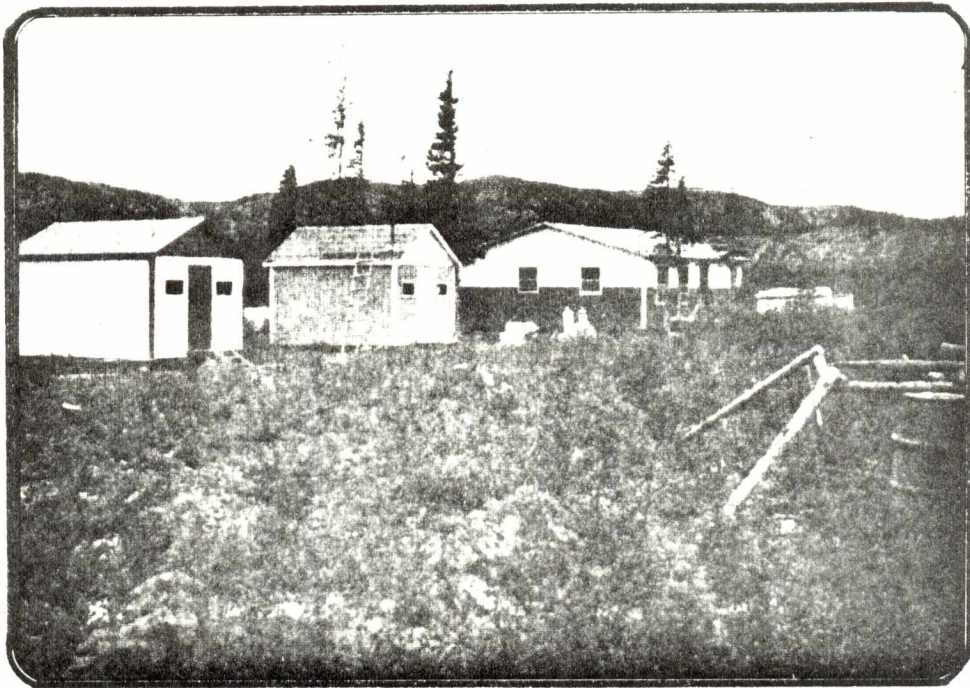
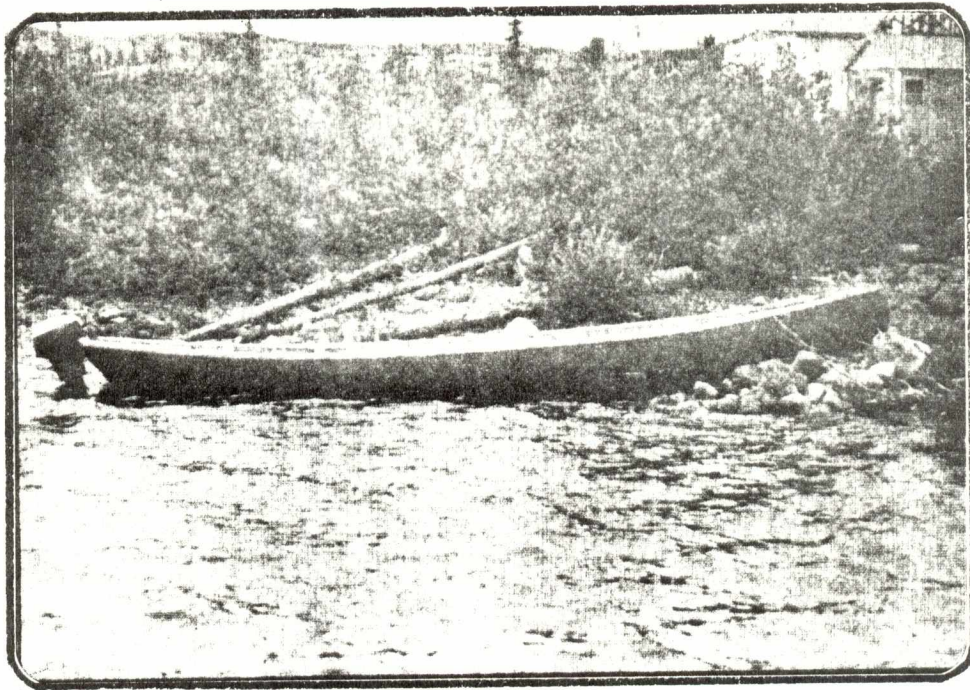
P. O. Box 401

Goose Bay, Labrador

Tel: (709) 896-5987

Pictures.



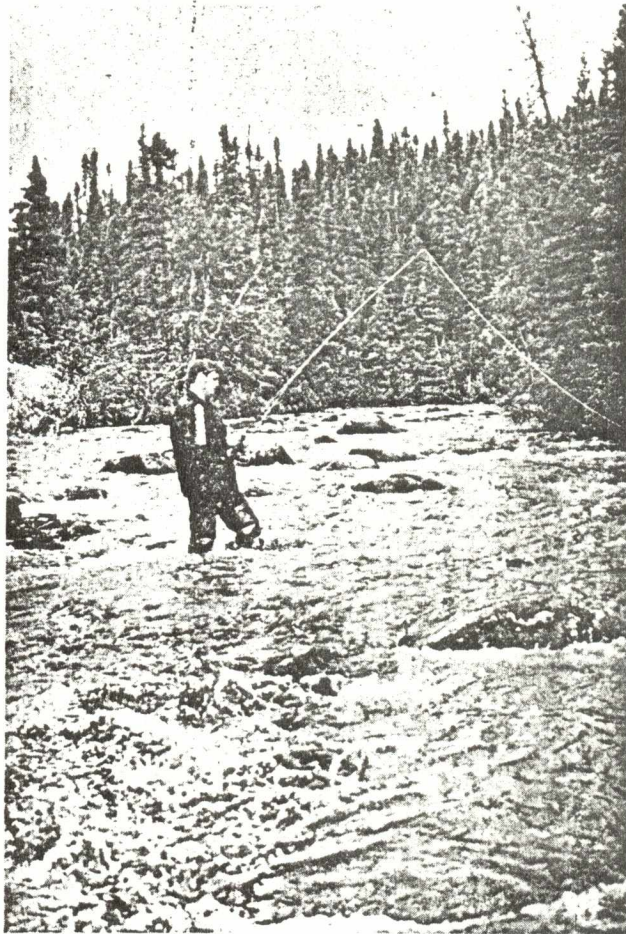


12 **Igloo Lake Lodge**

Brochure.

Igloo Lake Lodge

EAGLE RIVER, LABRADOR



GERRY PUMPHREY
LONG RANGE OUTFITTERS
HIGHLANDS, NFLD. CANADA A0N 1N0
PHONE: 709-645-2789

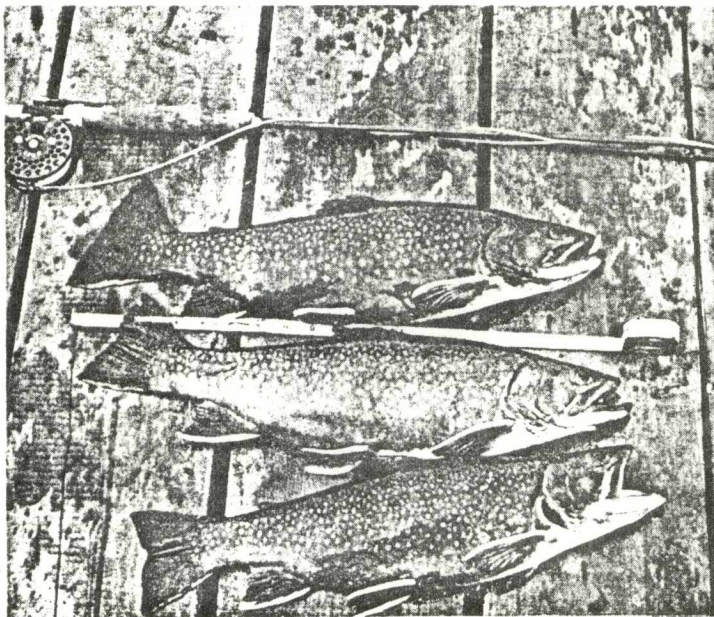
From One Sportsman to Another

My first real glimpse of Labrador goes back a few years when I began flying adventurous fishermen some 700 miles north of Corner Brook, Newfoundland, in search of trophy trout and char. I was flying for an outfitter then and was chosen for this special assignment due to my considerable flying experience and also for the fact that I had always lived in a wilderness location — and still do, operating a hunting camp not far from my home in Newfoundland. Fishing and hunting had been my way of life until the sight of a small bush plane momentarily lured me away from the wilderness to attend a flying school.

Later on, flying float equipped Beavers out of Goose Bay, it was only natural that all these big wild rivers meant more to me than a convenient navigation system. I always carried my fly rod along, trying pool after pool whenever I had a chance. All this exploration led to the discovery of one of the greatest fishing spots that ever turned up in Labrador.

This is where I built my lodge . . . in a whole new area teeming with large speckled trout . . . the best I ever ran across. Needless to say there is still a lot of exploration to be done, plenty of trophies to be caught and I look forward to sharing my future adventures with you.

GERRY PUMPHREY



Large wild trophy brook trout everywhere

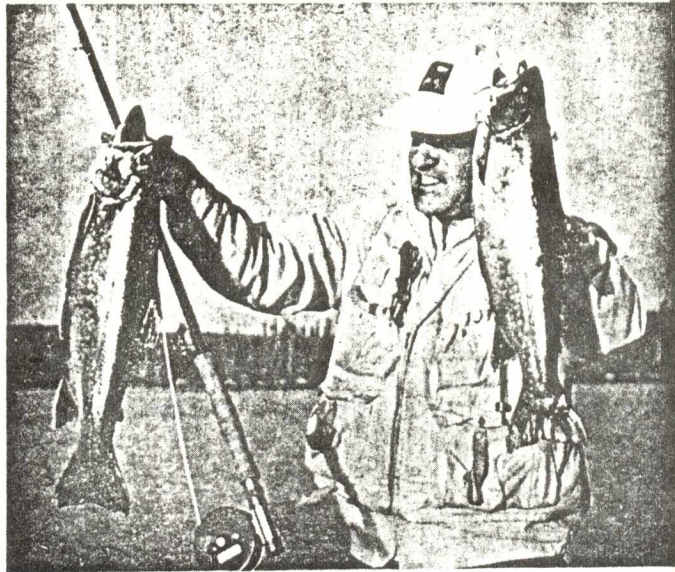


Head Guide Willis King. A dedicated woodsman, Willis has over 30 years of bush and guiding experience.

Part of the Eagle River water system, the Igloo River emerges from the wilds some 75 miles east of Goose Bay to wind south connecting a series of shallow lakes and ponds before it merges with the mighty Eagle River. There are other small feeder streams accessible by boat from camp but the main section of the river, which we now control, is a 15 mile unexplored stretch of fast water, wadeable and with numerous pools, the first ones being within a two-minute walk from the lodge.

These waters are capable of producing three pound and up trophy brook trout. There is a lot of them and we can guarantee you some of the fastest action in Labrador. So far, the camp record is a 7½ pounder but we know there are even larger trout in the area. These big trout are insect eaters and will take dry flies throughout the summer. Even fishing with a streamer or wet fly, you will often trigger a strike by skipping your fly over the surface. And, this is a territory for everyone: the expert fly fisherman will no doubt end up catching a few more trout but a novice will also do quite well. For a change of pace, you may want to go after extra large northern pike found around the weed beds and in the shallow bays.

Fly fishing only, catch and release, is our policy in order to preserve this exceptional trout fishing. We allow two trophy fish per sportsman. These are skinned or frozen until your return to Goose Bay.



Another happy fisherman with his trophies

RATE

NO EXTRAS OR HIDDEN COSTS

All-inclusive, except fishing licence, seven (7) day package (from Thursday to Thursday) covering round trip floatplane transportation from Goose Bay, Labrador, lodging meals, one guide for every two fishermen, boats, motors and gas:

\$625.00 Canadian funds per person.

Chartered aircraft service between Goose Bay and our lodge is subject to visual flight conditions. If your arrival at the camp is delayed due to weather or uncontrollable circumstances, the full rate will apply. However, if you are delayed in leaving, the extra is on the house. We endeavour to provide "same day fishing."

Rate does not include cost of fishing licence (\$5.00 and available at camp) or possible expenses resulting from an overnight stay in Goose Bay if such delay would become necessary.

RESERVATIONS AND DEPOSIT:

Reservations must be made as early as possible.

An advance deposit of \$200.00 per person is required with firm reservations and the balance of your payment is to be made upon arrival in Goose Bay. Only cash, certified or travelers cheques will be accepted. Deposits are refundable with a sixty (60) day written notice of cancellation.