



Fisheries and Oceans
Canada

Pêches et Océans
Canada

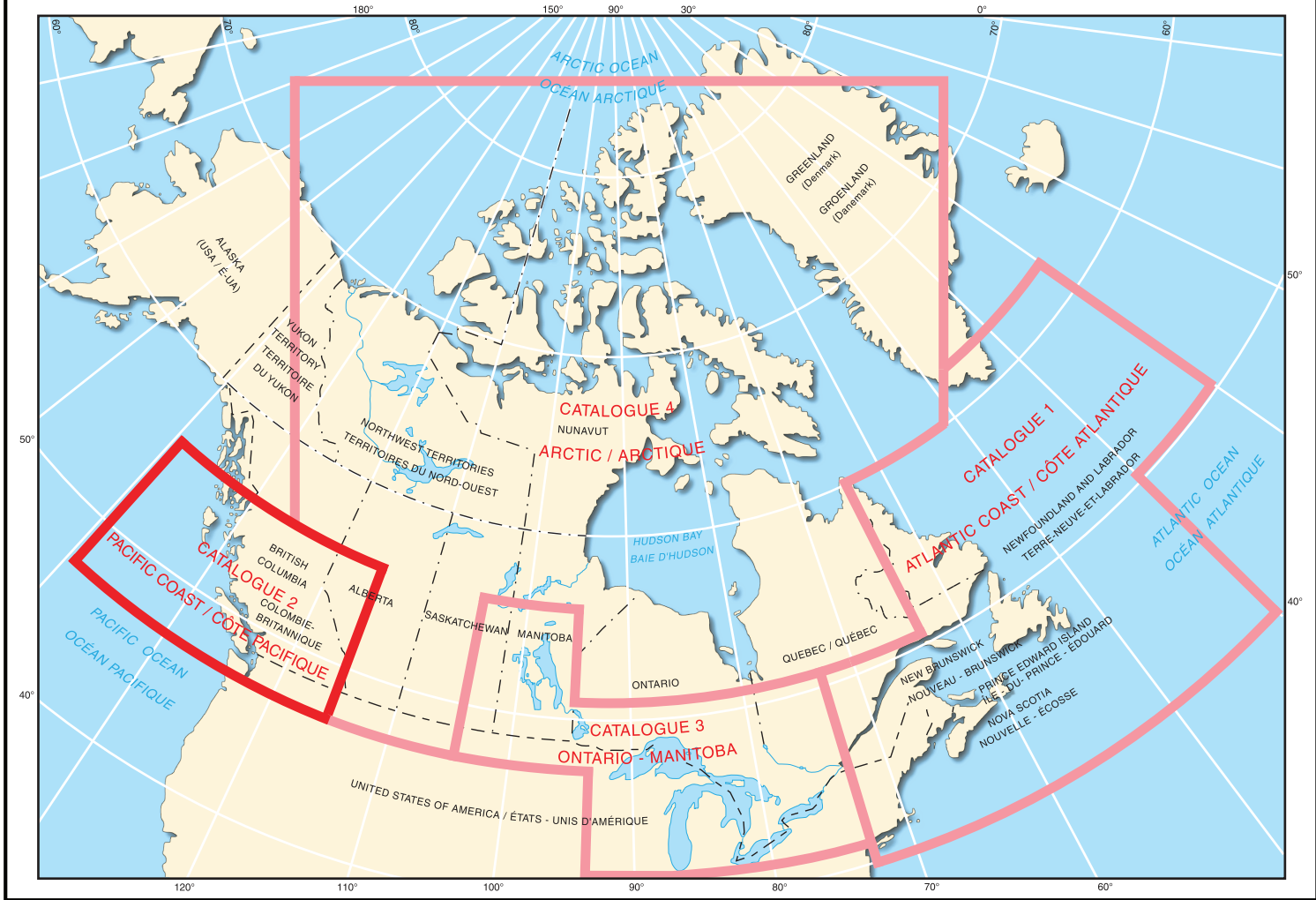
Catalogue

2 *Pacific Coast* *Côte pacifique*

Corrected to 09/2021

Corrigé jusqu'à 09/2021





IMPORTANT NOTICE

The Canadian Hydrographic Service no longer produces hard copies of its publications.

Updates are published in Notices to Mariners at <https://www.notmar.gc.ca/index-en.php> and on the Canadian Hydrographic Service website at <https://www.charts.gc.ca/index-eng.html>.

REPRODUCTION FOR PERSONAL USE

This digital publication - as published in <https://www.charts.gc.ca/index-eng.html> - may be printed or reproduced in any format, without charge or further permission, provided that it is for non-commercial purposes, i.e. not for sale or any profit whatsoever.

To be used for navigation, the reproduction must be an unaltered, true copy of the publication found in <https://www.charts.gc.ca/index-eng.html>, and kept up-to-date at all times.

REPRODUCTION FOR COMMERCIAL PURPOSES

This publication shall not be printed or otherwise reproduced in whole or in part for commercial purposes (i.e. in the purpose of sale or any profit whatsoever, as opposed to personal use), without prior written permission from the Canadian Hydrographic Service.

For full terms and conditions, visit <https://www.charts.gc.ca/index-eng.html> or email to CHSInfo@dfo-mpo.gc.ca.

DFO/2021-2048

Fs72-32/2-PDF

© Her Majesty the Queen in Right of Canada, 2021



AVIS IMPORTANT

Le Service hydrographique du Canada ne produit plus de copies papier de ses publications.

Les mises à jour sont publiées dans les Avis aux navigateurs à <https://www.notmar.gc.ca/index-fr.php> et sur le site Web du Service hydrographique du Canada à <https://www.charts.gc.ca/index-fra.html>.

REPRODUCTION À USAGE PERSONNEL

Cette publication numérique — telle que publiée dans <https://www.charts.gc.ca/index-fra.html> — peut être imprimée ou reproduite dans n'importe quel format, sans frais ni autorisations supplémentaires, à condition que ce soit à des fins non commerciales, c'est-à-dire pas à vendre ou à tirer un quelconque profit.

Pour être utilisée pour la navigation, la reproduction doit être une copie conforme et non modifiée de la publication trouvée dans <https://www.charts.gc.ca/index-fra.html>, et tenue à jour en tout temps.

REPRODUCTION À DES FINS COMMERCIALES

Cette publication ne doit pas être imprimée ni reproduite en tout ou en partie à des fins commerciales (c'est-à-dire dans le but de vendre ou de réaliser un profit quelconque, par opposition à un usage personnel), sans l'autorisation écrite préalable du Service hydrographique du Canada.

Pour connaître les modalités complètes, visitez <https://www.charts.gc.ca/index-fra.html> ou envoyez un courriel à CHSInfo@dfo-mpo.gc.ca.

DFO/2021-2048

Fs72-32/2-PDF

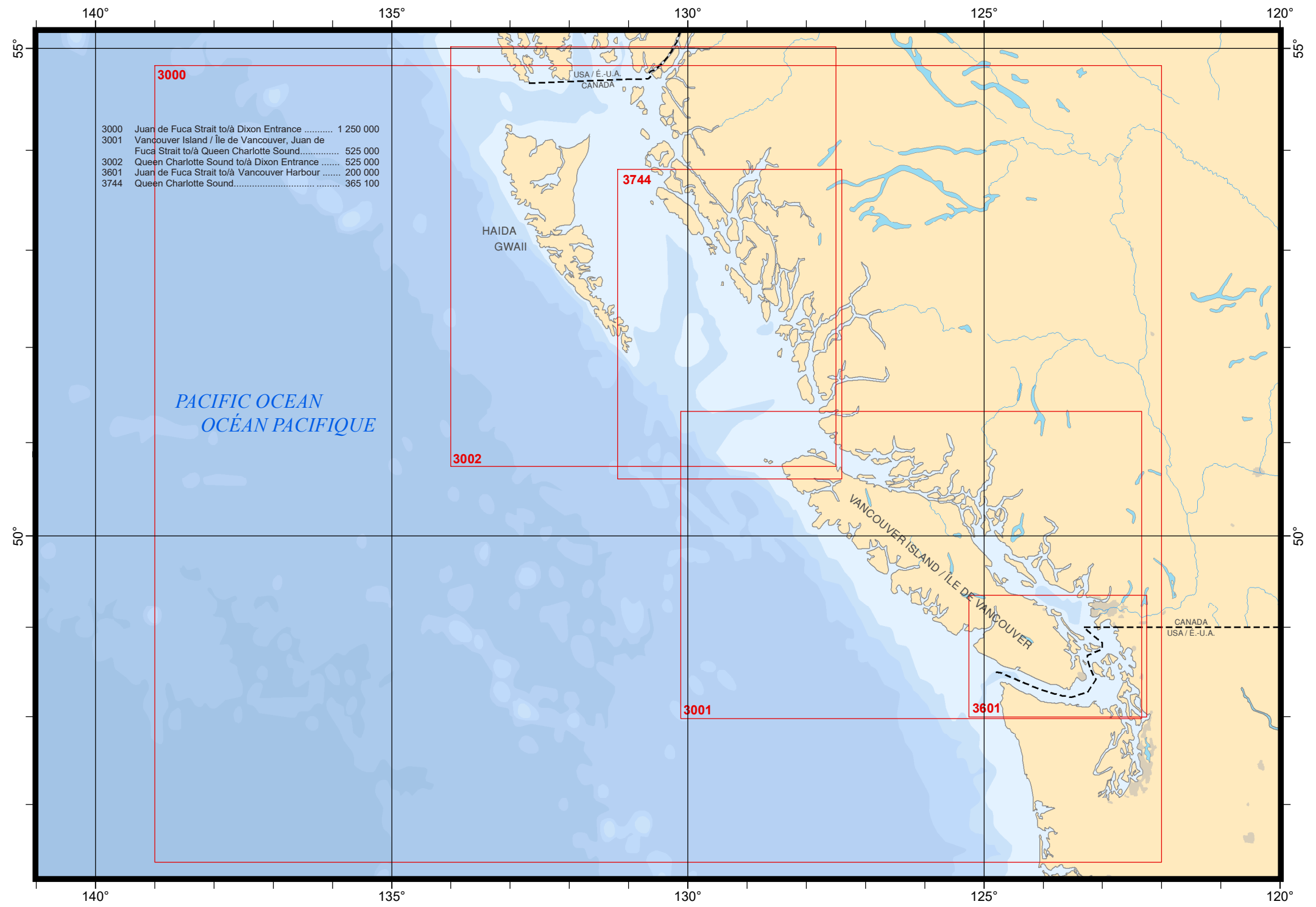
© Sa Majesté la Reine du chef du Canada, 2021

Table of Contents / Table des matières

Pacific Overview / Vue d'ensemble du Pacifique.....	Page 4
Dixon Entrance.....	Page 5
Haida Gwaii.....	Page 6
Stewart.....	Page 7
Chatham Sound.....	Page 8
Hecate Strait.....	Page 9
Queen Charlotte Sound.....	Page 10
Kitimat.....	Page 11
King Island.....	Page 12
Smith Sound.....	Page 13
Port Hardy.....	Page 14
Nootka Island.....	Page 15
Johnstone Strait.....	Page 16
Barkley Sound.....	Page 17
Squamish.....	Page 18
Vancouver.....	Page 19
Small Craft Charts / Cartes pour embarcations.....	Page 20

LARGER SCALE CHARTS / CARTES À GRANDE ÉCHELLE

Refuse Bay.....	Page 21
Banks Island.....	Page 22
Butedale.....	Page 23
Hunter Island.....	Page 24
Prince Rupert.....	Page 25
Port MacNeill.....	Page 26
Campbell River.....	Page 27
Port Alberni.....	Page 28
Victoria.....	Page 29



3000

3000	Juan de Fuca Strait to/à Dixon Entrance	1 250 000
3001	Vancouver Island / Île de Vancouver, Juan de Fuca Strait to/à Queen Charlotte Sound.....	525 000
3002	Queen Charlotte Sound to/à Dixon Entrance	525 000
3601	Juan de Fuca Strait to/à Vancouver Harbour	200 000
3744	Queen Charlotte Sound.....	365 100

PACIFIC OCEAN
OCÉAN PACIFIQUE

3002

3744

3001

3601

Haida
Gwaii

VANCOUVER ISLAND / ÎLE DE VANCOUVER

CANADA
USA / E.-U.A.

USA / E.-U.A.
CANADA

133°

132°

55°

55°

3800

3800	Dixon Entrance	200 000
3811	Port Louis and/et Otard Bay	18 158
3854	Tasu Sound to/à Port Louis	141 935
3860	Hippa Island.....	36 513
	Seal Inlet and/et Tartu Inlet	36 513
3863	Port Chanal.....	18 258
3868	Port Louis to/à Langara Island.....	72 921
3869	Skidegate Channel to/à Tian Rock	70 620
3890	Approches to/Approches à Skidegate Inlet.....	40 000
3892	Masset Harbour and/et Naden Harbour	40 000
	Wiah Point	20 000
3893	Juskatla Narrows	12 000
	Masset Inlet	40 000
3894	Selwyn Inlet to/à Lawn Point.....	73 026
3895	Alexandra Narrows	20 000
	Masset Harbour and Approches/et les Approches	20 000
	Parry Passage	20 000
3902	Hecate Strait	250 000

DIXON ENTRANCE

USA / É.-U.A.
CANADA

54°

54°

3868

3895

3892

3902

3869

3893

3854

3811

3863

3860

3890

3894

Langara I

Parry Passage

Virago Sound

Alexandra Narrows

Naden Hbr

GRAHAM ISLAND

Masset

Rose Pt

Masset Inlet

Port Chanal

Port Louis

133°

132°

Prince of Wales Island

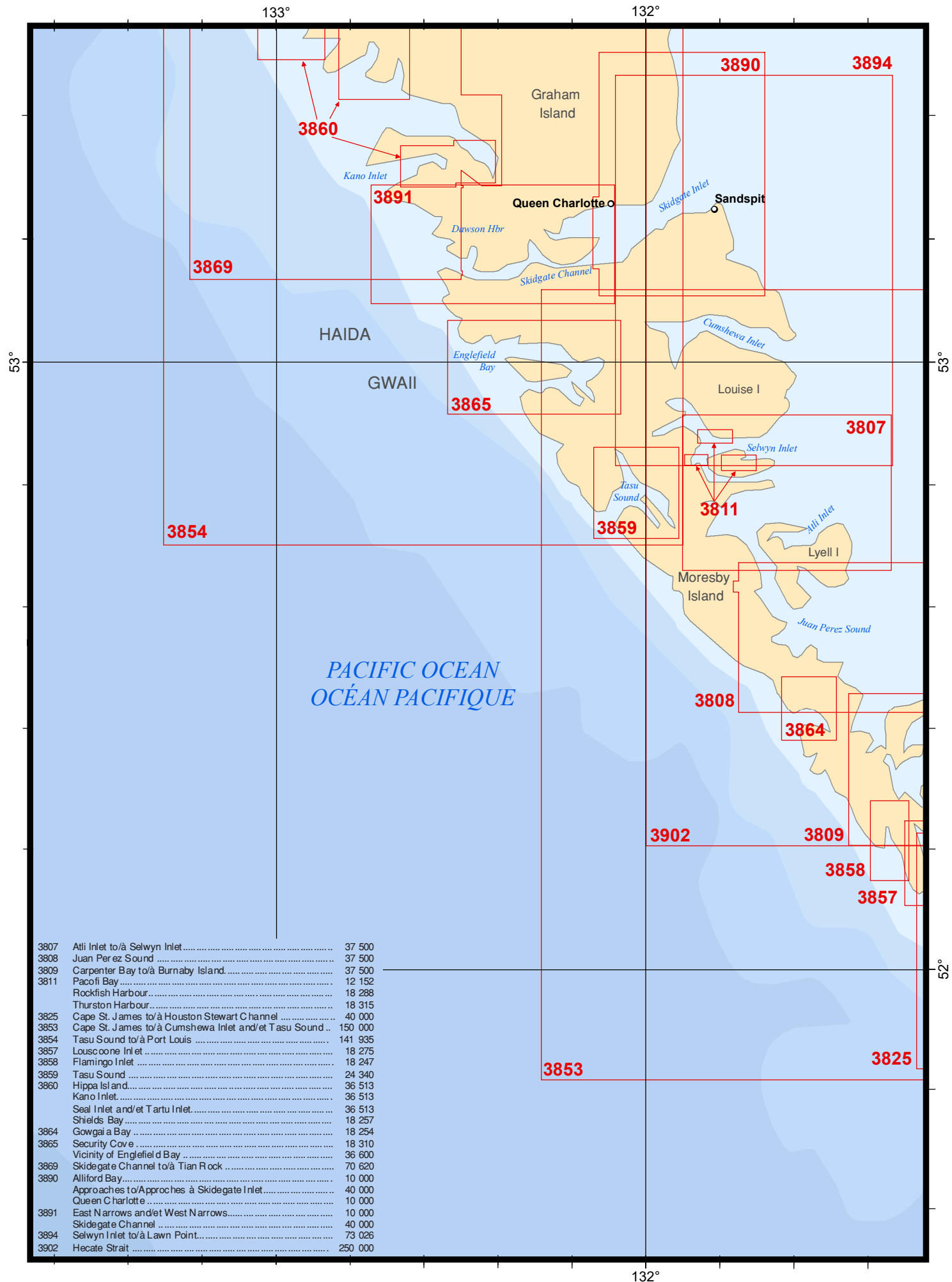
Long Island

Dall Island

Conlova Bay

Forrester I

Duke I



3807	Atli Inlet to/à Selwyn Inlet.....	37 500
3808	Juan Perez Sound	37 500
3809	Carpenter Bay to/à Burnaby Island.....	37 500
3811	Pacofi Bay	12 152
	Rockfish Harbour.....	18 288
	Thurston Harbour.....	18 315
3825	Cape St. James to/à Houston Stewart Channel	40 000
3853	Cape St. James to/à Cumshewa Inlet and/et Tasu Sound ..	150 000
3854	Tasu Sound to/à Port Louis	141 935
3857	Louscoone Inlet	18 275
3858	Flamingo Inlet	18 247
3859	Tasu Sound	24 340
3860	Hippa Island.....	36 513
	Kano Inlet	36 513
	Seal Inlet and/et Tartu Inlet.....	36 513
	Shields Bay	18 257
3864	Gowgala Bay	18 254
3865	Security Cove	18 310
	Vicinity of Englefield Bay	36 600
3869	Skidgate Channel to/à Tian Rock	70 620
3890	Alliford Bay.....	10 000
	Approaches to/Approches à Skidgate Inlet.....	40 000
	Queen Charlotte	10 000
3891	East Narrows and/et West Narrows.....	10 000
	Skidgate Channel	40 000
3894	Selwyn Inlet to/à Lawn Point.....	73 026
3902	Hecate Strait	250 000

131°

130°

129°

57°

57°

56°

56°

CANADA
USA / E-UA

3794

Stewart

3794	Stewart	12 000
3920	Alice Arm	25 000
3933	Portland Canal and/et Observatory Inlet.....	80 000

3933

Hastings Arm

Alice Arm

3920

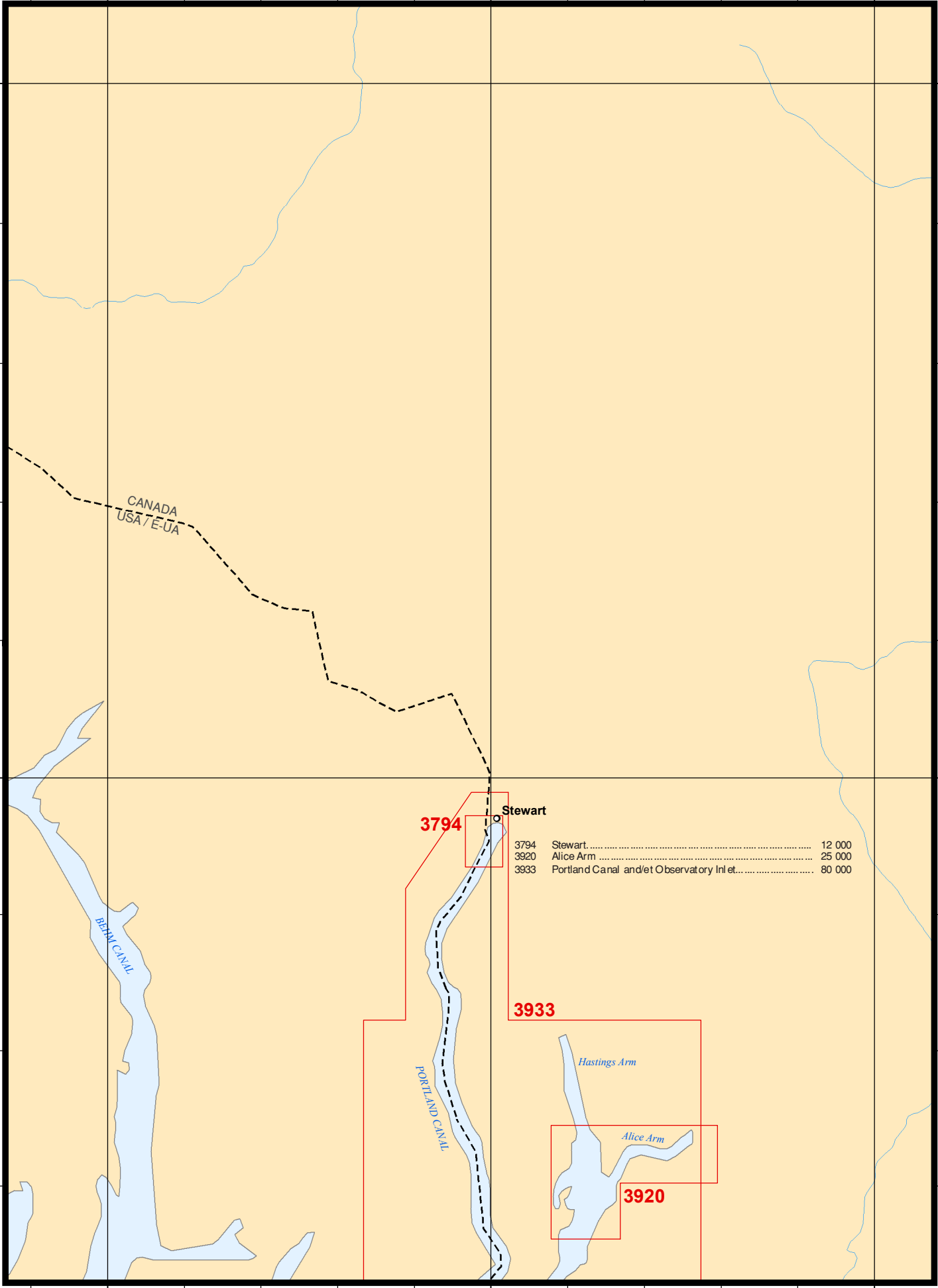
131°

130°

129°

BEDFORD CANAL

PORTLAND CANAL



131°

130°

129°

55°

55°

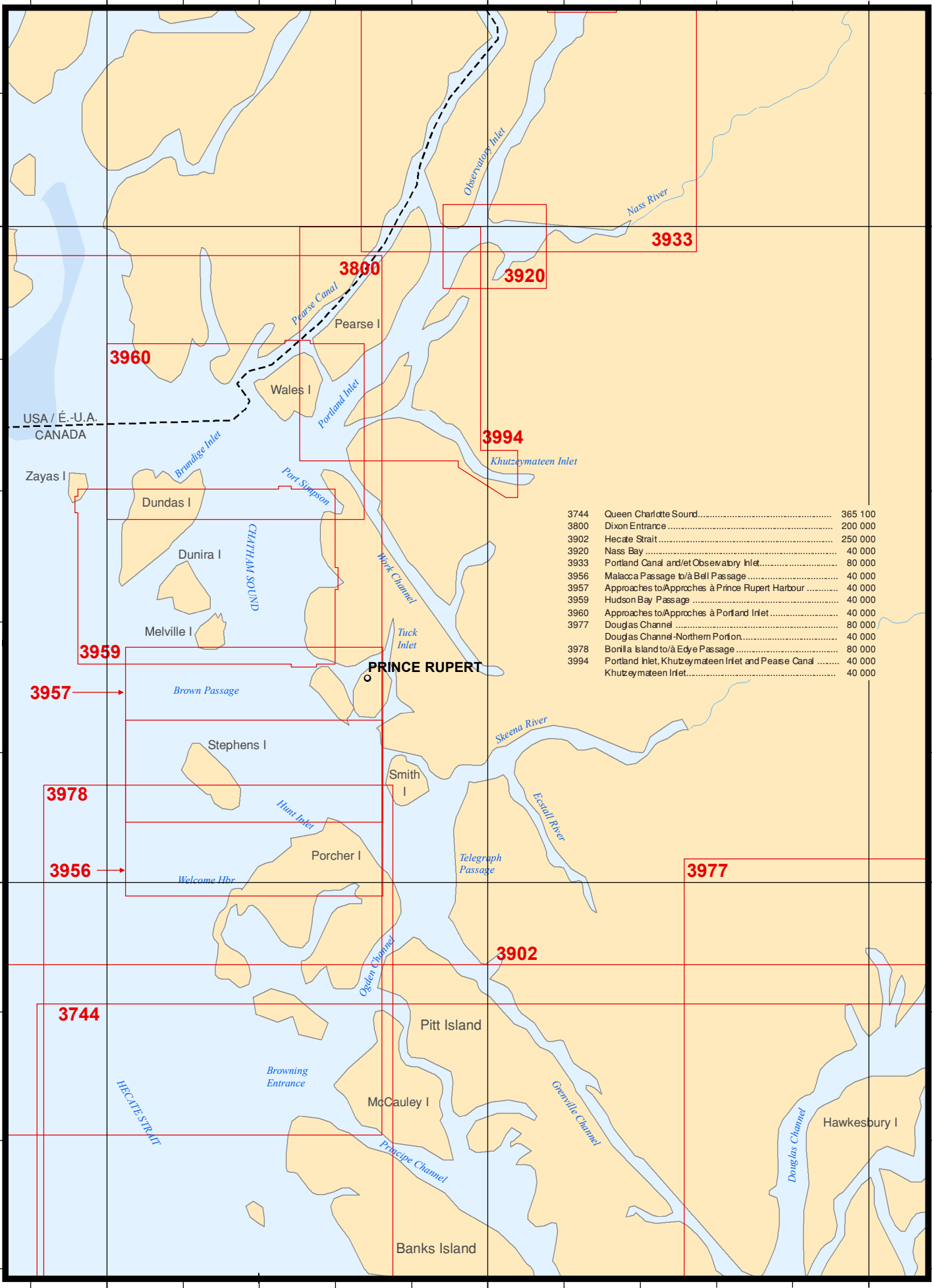
54°

54°

131°

130°

129°



USA / É.-U.A.
CANADA

Zayas I

Dundas I

Dunira I

Melville I

PRINCE RUPERT

Stephens I

Smith I

Porcher I

Pitt Island

McCauley I

Hawkesbury I

Banks Island

3800

3920

3933

3960

3994

3959

3957

3978

3956

3977

3744

3902

3744	Queen Charlotte Sound.....	365 100
3800	Dixon Entrance	200 000
3902	Hecate Strait	250 000
3920	Nass Bay	40 000
3933	Portland Canal and/et Osevaibry Inlet.....	80 000
3956	Malacca Passage to/à Bell Passage	40 000
3957	Approches to/Approches à Prince Rupert Harbour	40 000
3959	Hudson Bay Passage	40 000
3960	Approches to/Approches à Portland Inlet	40 000
3977	Douglas Channel	80 000
	Douglas Channel-Northern Portion.....	40 000
3978	Bonilla Island to/à Ede Passage	80 000
3994	Portland Inlet, Khutzeymateen Inlet and Pease Canal	40 000
	Khutzeymateen Inlet.....	40 000

HECATE STRAIT

Browning Entrance

CHATHAM SOUND

Pearse Canal

Port Simpson

Work Channel

Tuck Inlet

Skeena River

Esquall River

Telegraph Passage

Ogden Channel

Principe Channel

Greenville Channel

Douglas Channel

Observatory Inlet

Nass River

Brundige Inlet

Portland Inlet

Khutzeymateen Inlet

Pearse I

Wales I

131°

130°

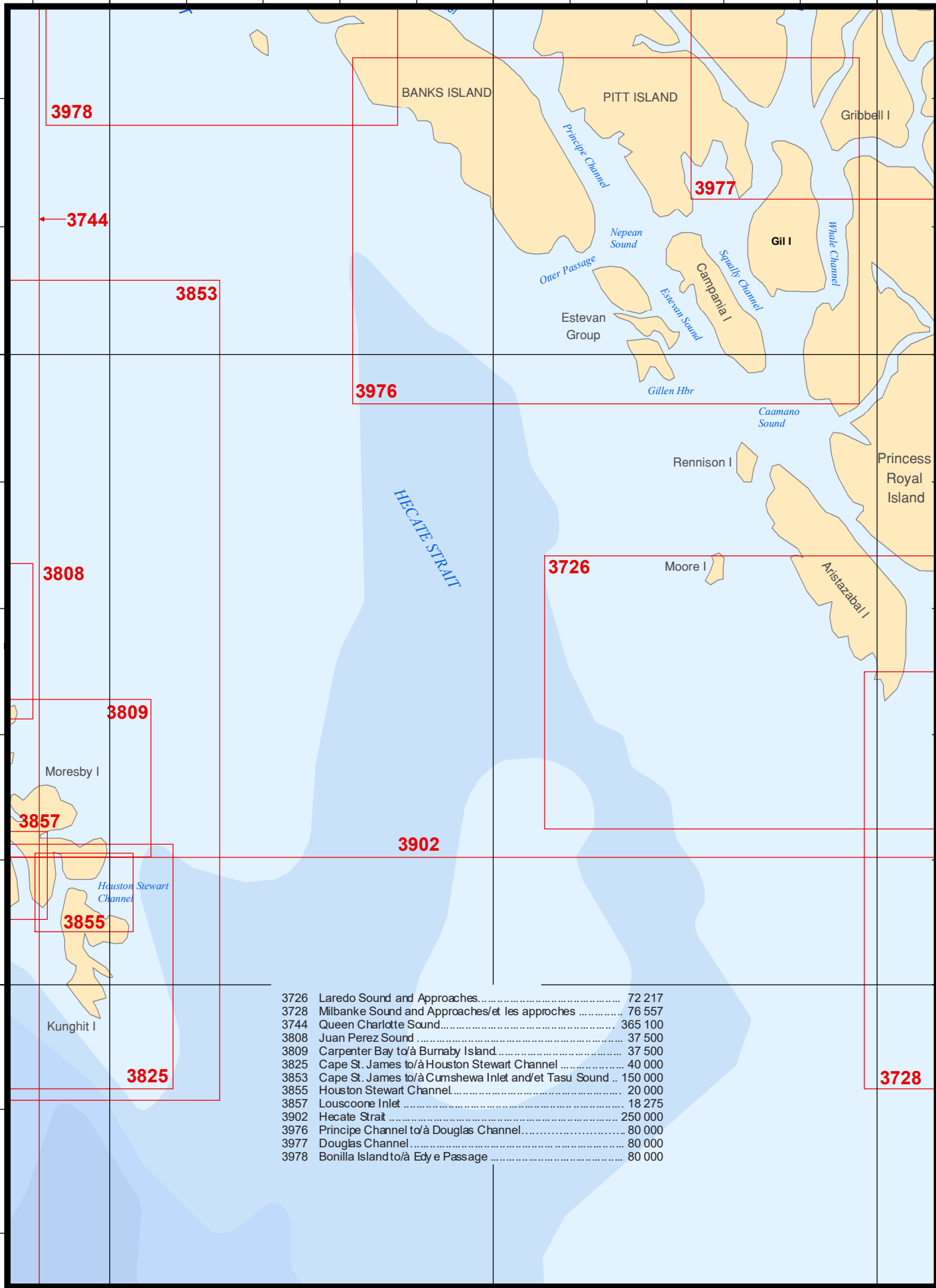
129°

53°

53°

52°

52°



3726	Laredo Sound and Approaches.....	72 217
3728	Milbanke Sound and Approches/et les approches	76 557
3744	Queen Charlotte Sound.....	365 100
3808	Juan Perez Sound	37 500
3809	Carpenter Bay to/à Burnaby Island.....	37 500
3825	Cape St. James to/à Houston Stewart Channel	40 000
3853	Cape St. James to/à Cumshewa Inlet and/et Tasu Sound ..	150 000
3855	Houston Stewart Channel.....	20 000
3857	Louscoone Inlet	18 275
3902	Hecate Strait	250 000
3976	Principe Channel to/à Douglas Channel.....	80 000
3977	Douglas Channel.....	80 000
3978	Bonilla Island to/à Edy e Passage	80 000

131°

130°

3605	Quatsino Sound to à Queen Charlotte Strait	150 000
3625	Scott Islands	80 000
3744	Queen Charlotte Sound.....	365 100

3605

3625

3744

*QUEEN
CHARLOTTE
SOUND*

*PACIFIC OCEAN
Océan Pacifique*

51°

51°

50°

50°

131°

130°

129°

129°

3744	Queen Charlotte Sound.....	365 100
3902	Hecate Strait	250 000
3933	Portland Canal and/et Observatory Inlet.....	80 000
3977	Douglas Channel	80 000
	Douglas Channel-Northern Portion.....	40 000

55°

3933

Skeena River

○ Kitimat

54°

3902

Morice Lake

3744

Ootsa Lake

Hawkesbury I

Douglas Channel

Gribbell I

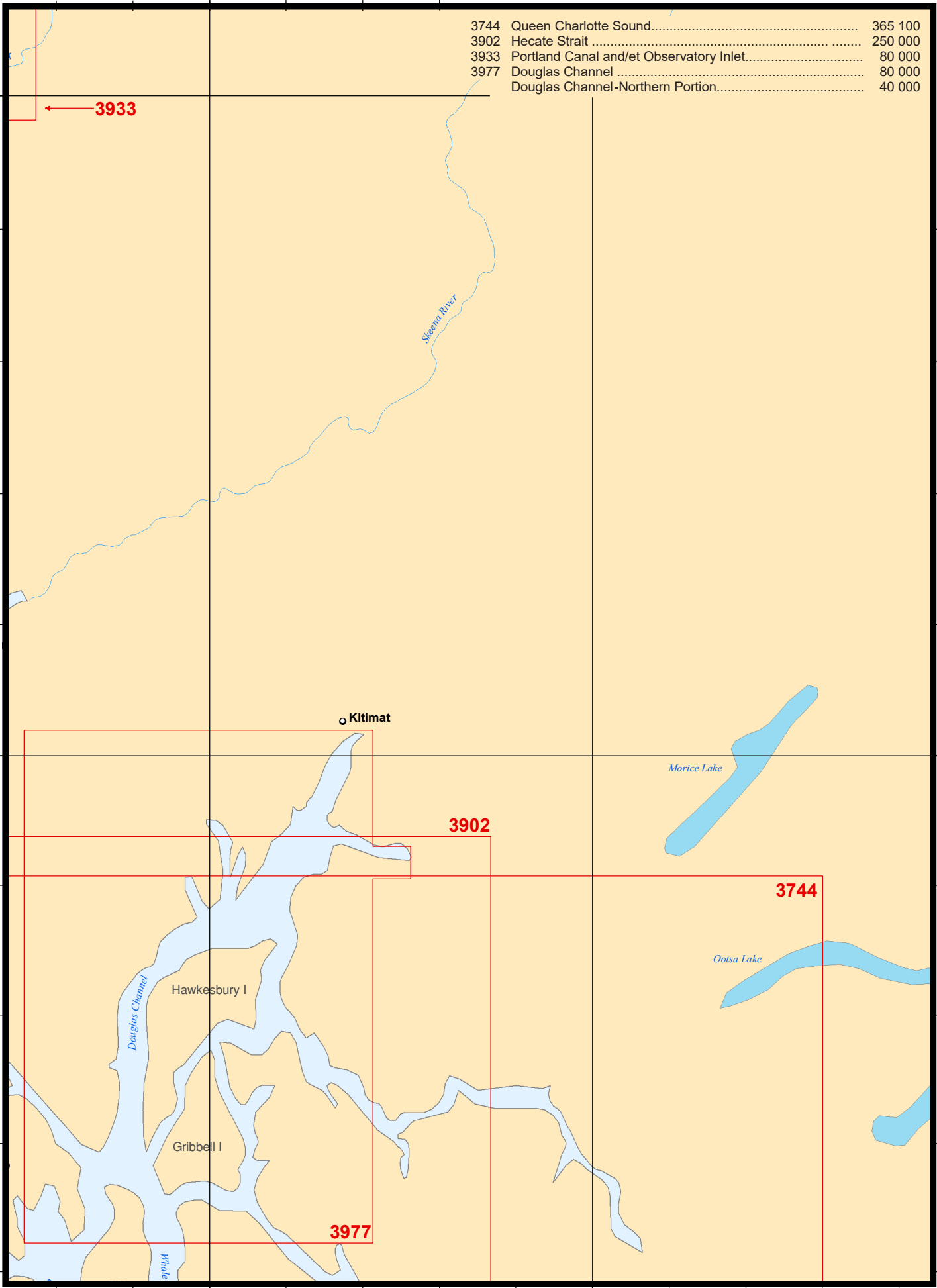
3977

Whale

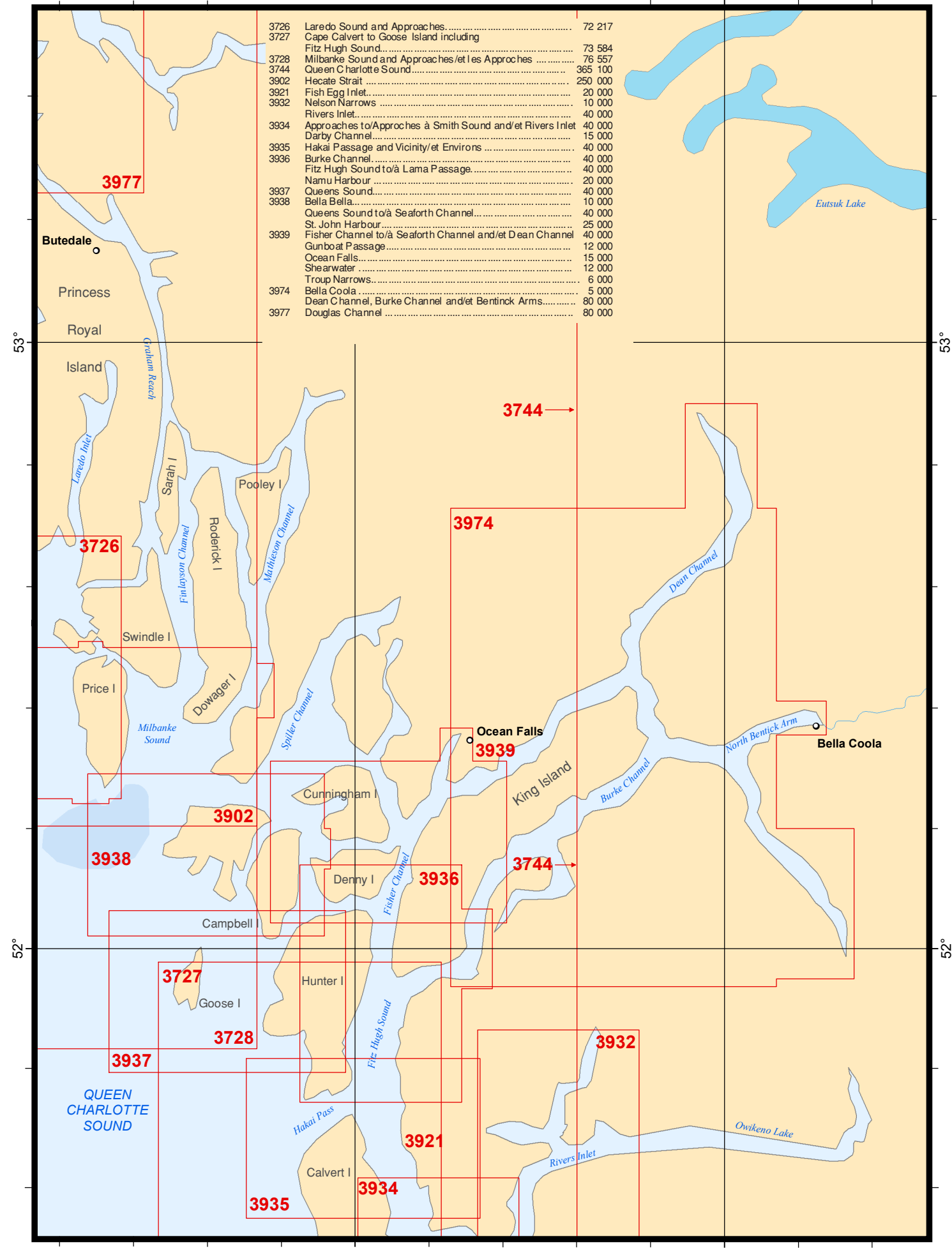
129°

128°

54°



3726	Laredo Sound and Approaches.....	72 217
3727	Cape Calvert to Goose Island including Fitz Hugh Sound.....	73 584
3728	Milbanke Sound and Approaches/et les Approches	76 557
3744	Queen Charlotte Sound.....	365 100
3902	Hecate Strait	250 000
3921	Fish Egg Inlet.....	20 000
3932	Nelson Narrows	10 000
	Rivers Inlet.....	40 000
3934	Approaches to/Approches à Smith Sound and/et Rivers Inlet Darby Channel.....	40 000 15 000
3935	Hakai Passage and Vicinity/et Environs	40 000
3936	Burke Channel.....	40 000
	Fitz Hugh Sound to/à Lama Passage.....	40 000
	Namu Harbour	20 000
3937	Queens Sound.....	40 000
3938	Bella Bella.....	10 000
	Queens Sound to/à Seaforth Channel.....	40 000
	St. John Harbour.....	25 000
3939	Fisher Channel to/à Seaforth Channel and/et Dean Channel Gunboat Passage.....	40 000 12 000
	Ocean Falls.....	15 000
	Shearwater	12 000
	Troup Narrows.....	6 000
3974	Bella Coola	5 000
	Dean Channel, Burke Channel and/et Bentinck Arms.....	80 000
3977	Douglas Channel	80 000

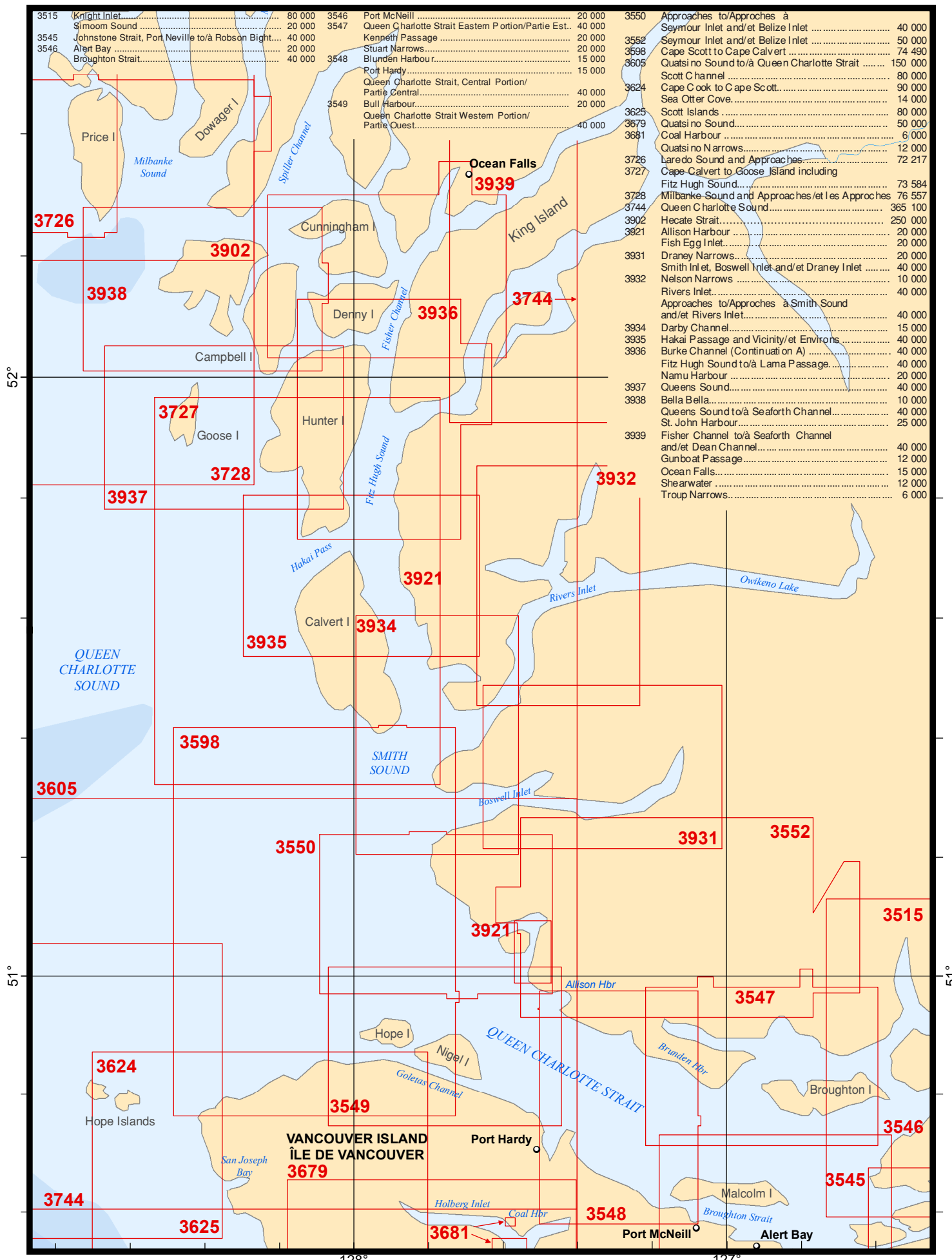


53°

53°

52°

52°



3515	Knight Inlet	80 000
	Sirmoom Sound	20 000
3545	Johnstone Strait, Port Neville to/à Robson Bight	40 000
3546	Alert Bay	20 000
	Broughton Strait	40 000

3546	Port McNeill	20 000
3547	Queen Charlotte Strait Eastern Portion/Partie Est.	40 000
	Kenneth Passage	20 000
	Stuart Narrows	20 000
3548	Blunden Harbour	15 000
	Port Hardy	15 000
	Queen Charlotte Strait, Central Portion/Partie Central	40 000
3549	Bull Harbour	20 000
	Queen Charlotte Strait Western Portion/Partie Ouest	40 000

3550	Approaches to/Approches à Seymour Inlet and/et Belize Inlet	40 000
3552	Seymour Inlet and/et Belize Inlet	50 000
3598	Cape Scott to Cape Calvert	74 490
3605	Quatsino Sound to/à Queen Charlotte Strait	150 000
	Scott Channel	80 000
3624	Cape Cook to Cape Scott	90 000
	Sea Otter Cove	14 000
	Scott Islands	80 000
3625	Quatsino Sound	50 000
3679	Coal Harbour	6 000
3681	Quatsino Narrows	12 000
3726	Laredo Sound and Approaches	72 217
3727	Cape Calvert to Goose Island including Fitz Hugh Sound	73 584
3728	Milbanke Sound and Approaches/et Les Approches	76 557
3744	Queen Charlotte Sound	365 100
3902	Hecate Strait	250 000
3921	Allison Harbour	20 000
	Fish Egg Inlet	20 000
3931	Draney Narrows	20 000
	Smith Inlet, Boswell Inlet and/et Draney Inlet	40 000
3932	Nelson Narrows	10 000
	Rivers Inlet	40 000
	Approaches to/Approches à Smith Sound and/et Rivers Inlet	40 000
3934	Darby Channel	15 000
3935	Hakai Passage and Vicinity/et Environs	40 000
3936	Burke Channel (Continuation A)	40 000
	Fitz Hugh Sound to/à Lama Passage	40 000
	Namu Harbour	20 000
3937	Queens Sound	40 000
3938	Bella Bella	10 000
	Queens Sound to/à Seaforth Channel	40 000
	St. John Harbour	25 000
3939	Fisher Channel to/à Seaforth Channel and/et Dean Channel	40 000
	Gunboat Passage	12 000
	Ocean Falls	15 000
	Shearwater	12 000
	Troup Narrows	6 000

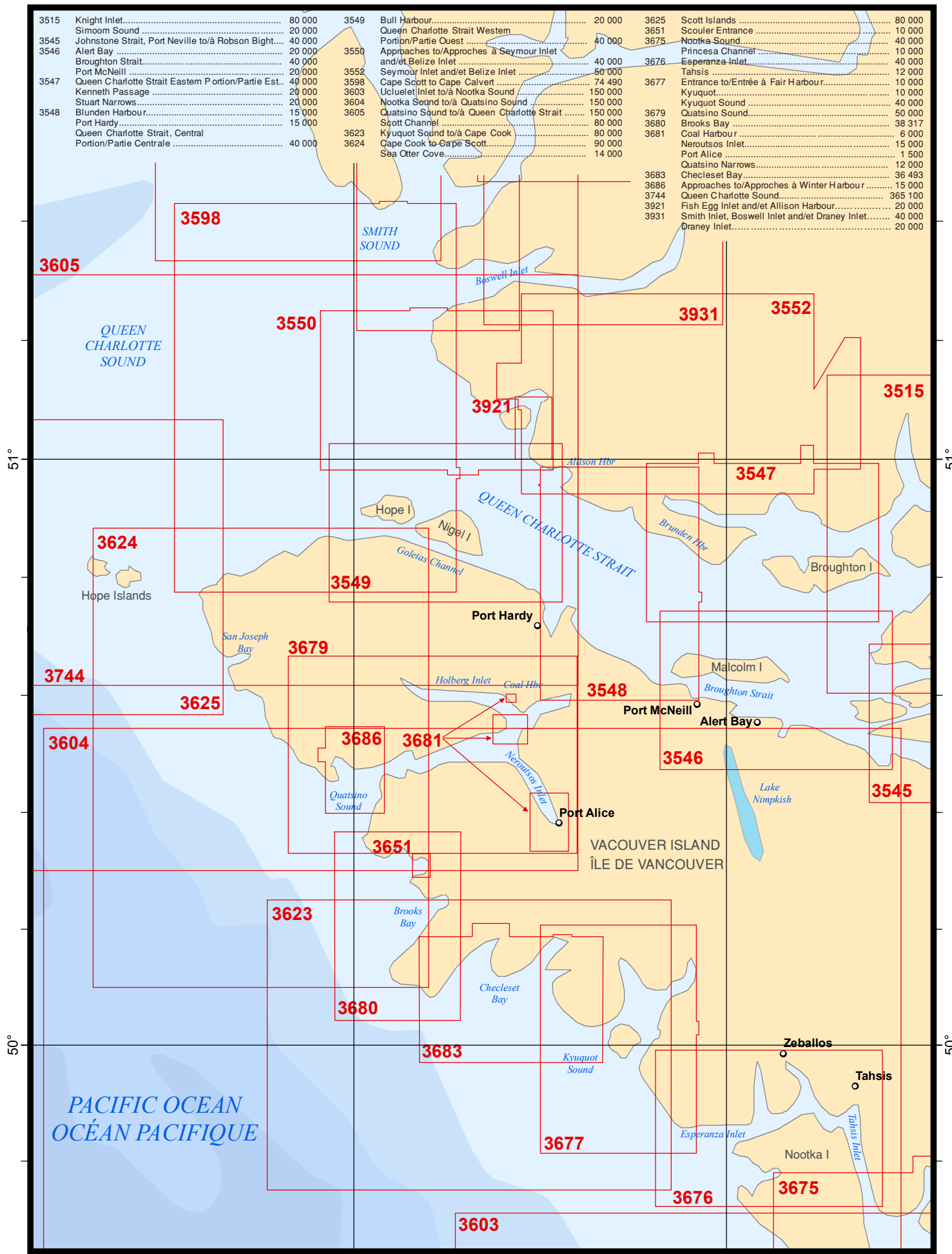
128°

127°

3515	Knight Inlet.....	80 000
	Simoom Sound	20 000
3545	Johnstone Strait, Port Neville to/à Robson Bight....	40 000
3546	Alert Bay	20 000
	Broughton Strait.....	40 000
	Port McNeill	20 000
3547	Queen Charlotte Strait Eastern Portion/Partie Est..	40 000
	Kenneth Passage	20 000
	Stuart Narrows	20 000
3548	Blunden Harbour.....	15 000
	Port Hardy.....	15 000
	Queen Charlotte Strait, Central Portion/Partie Centrale	40 000

3549	Bull Harbour.....	20 000
	Queen Charlotte Strait Western Portion/Partie Ouest	40 000
3550	Approches to/Approches à Seymour Inlet and/et Belize Inlet	40 000
3552	Seymour Inlet and/et Belize Inlet	50 000
3598	Cape Scott to Cape Calvert	74 490
3603	Ucluelet Inlet to/à Nootka Sound	150 000
3604	Nootka Sound to/à Quatsino Sound	150 000
3605	Quatsino Sound to/à Queen Charlotte Strait	150 000
	Scott Channel	80 000
3623	Kyuquot Sound to/à Cape Cook	80 000
3624	Cape Cook to Cape Scott.....	90 000
	Sea Otter Cove.....	14 000

3625	Scott Islands	80 000
3651	Scouler Entrance	10 000
3675	Nootka Sound.....	40 000
	Princesa Channel.....	10 000
3676	Esperanza Inlet.....	40 000
	Tahsis	12 000
3677	Entrance to/Entrée à Fair Harbour.....	10 000
	Kyuquot.....	10 000
	Kyuquot Sound	40 000
3679	Quatsino Sound.....	50 000
3680	Brooks Bay	38 317
3681	Coal Harbour	6 000
	Neroutos Inlet.....	15 000
	Port Alice	1 500
	Quatsino Narrows	12 000
3683	Checleset Bay	36 493
3686	Approches to/Approches à Winter Harbour	15 000
3744	Queen Charlotte Sound.....	365 100
3921	Fish Egg Inlet and/et Allison Harbour.....	20 000
3931	Smith Inlet, Boswell Inlet and/et Draney Inlet.....	40 000
	Draney Inlet.....	20 000



128°

127°

128°

127°

Tahsis

Esperanza Inlet

Tahsis Inlet

Nootka I

3677

3623

3676

3675

3603

NOOTKA SOUND

3604

3602	Approaches to/Approches à Juan de Fuca Strait	150 000
3603	Ucluelet Inlet to/à Nootka Sound	150 000
3604	Nootka Sound to/à Quatsino Sound	150 000
3623	Kyuquot Sound to/à Cape Cook	80 000
3674	Millar Channel to/à Estevan Point.....	40 000
3675	Nootka Sound.....	40 000
	Princesa Channel	10 000
3676	Esperanza Inlet.....	40 000
	Tahsis	12 000
3677	Kyuquot Sound	40 000

3674

CLAYOQUOT SOUND

49°

49°

PACIFIC OCEAN
OCÉAN PACIFIQUE

48°

48°

3602

128°

127°

126°

125°

3512	Strait of Georgia, Central Portion/Partie Centrale.....	80 000
3513	Strait of Georgia, Northern Portion/Partie Nord	80 000
3514	Jervis Inlet.....	50 000
3515	Knight Inlet.....	80 000
3537	Okisollo Channel.....	20 000
	Whiterock Passage.....	10 000
3538	Desolation Sound and/et Sull Channel	40 000
3541	Approaches to/Approches à Toba Inlet	40 000
3542	Bute Inlet, Continuation A/B.....	40 000
	Bute Inlet, Continuation B/C.....	40 000
3543	Cordero Channel.....	40 000
	Dent and/et Yuculta Rapids	20 000
	Greene Point Rapids	20 000
3544	Johnstone Strait, Race Passage and/et Current Passage.....	25 000
3545	Johnstone Strait, Port Neville to/à Robson Blight.....	40 000
3564	Chatham Channel.....	10 000
	Havannah Channel and/et Chatham Channel.....	20 000
	Port Neville.....	20 000
3603	Ucluelet Inlet to/à Nootka Sound	150 000
3675	Gold River.....	10 000
	Nootka Sound.....	40 000

51°

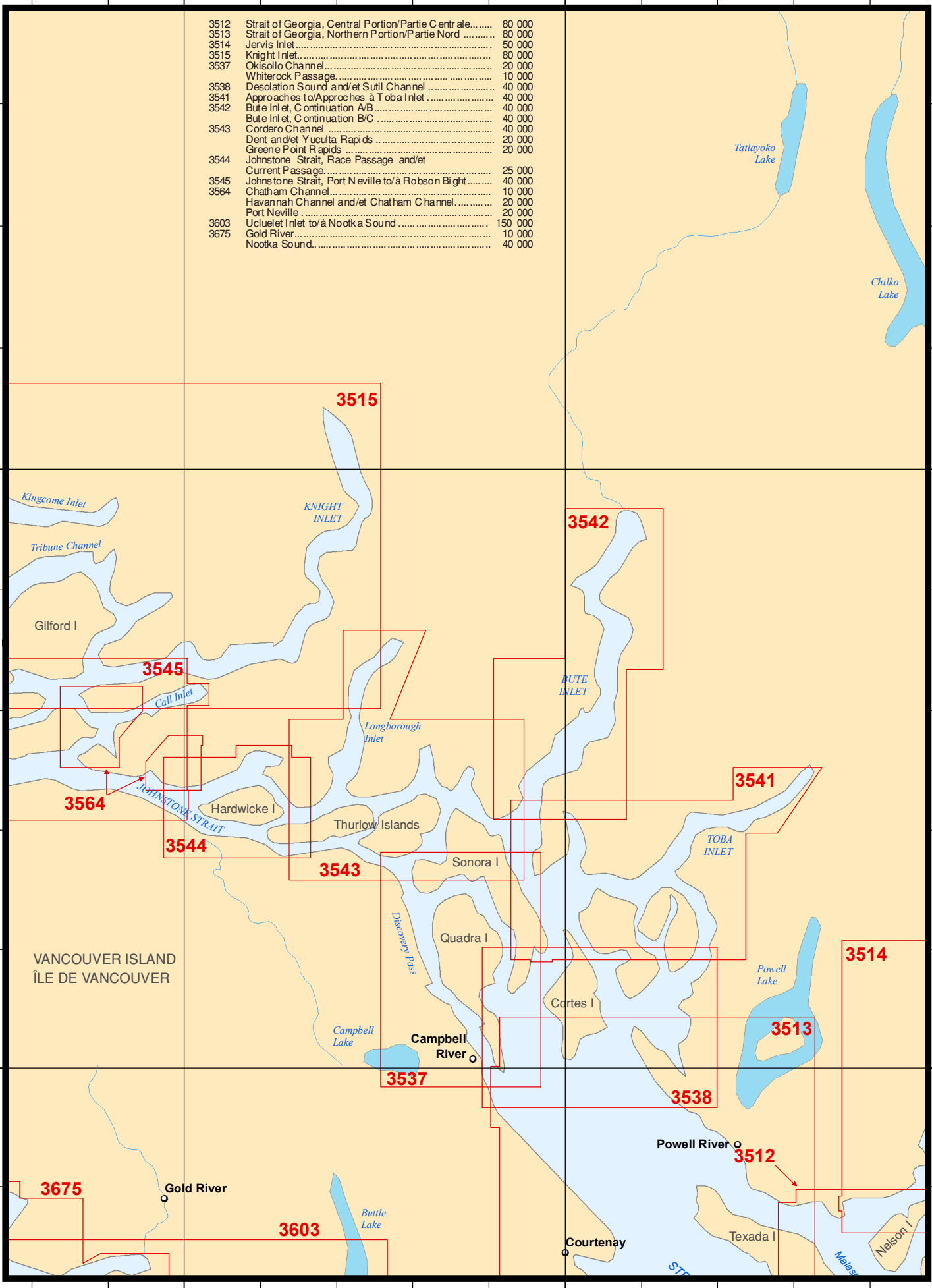
51°

50°

50°

126°

125°



Tutlayoko Lake

Chilko Lake

Kingcome Inlet

Tribune Channel

Gilford I

KNIGHT INLET

3545

Call Inlet

3564

JOHNSTONE STRAIT

Hardwicke I

3544

Longborough Inlet

Thurlow Islands

3543

Sonora I

Quadra I

Cortes I

Campbell River

3537

Campbell Lake

DISCOVER PASS

VANCOUVER ISLAND
ÎLE DE VANCOUVER

3675

Gold River

3603

Buttle Lake

Courtenay

Powell River

3512

Texada I

3514

Powell Lake

3513

TOBA INLET

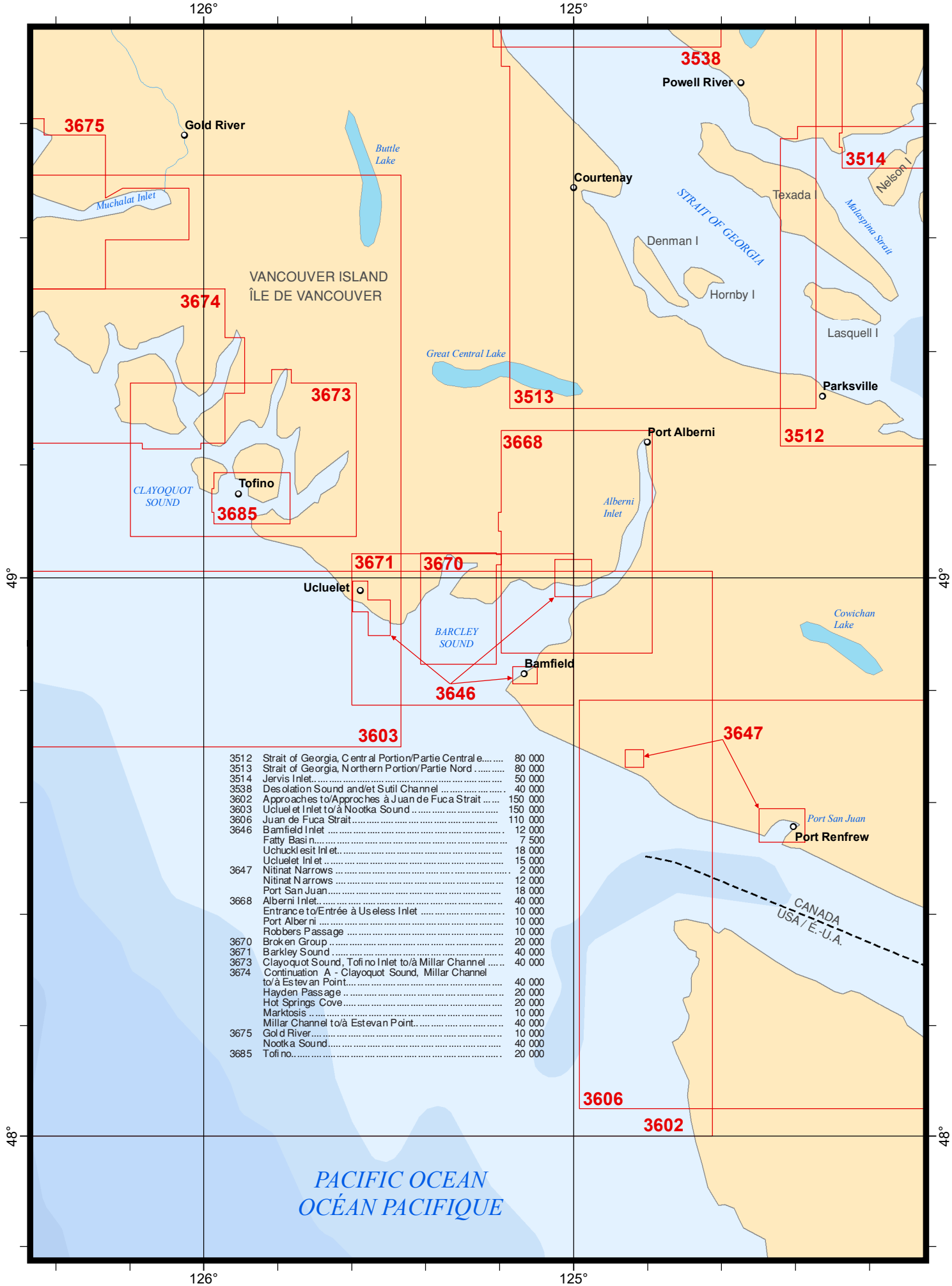
3541

3542

BUTE INLET

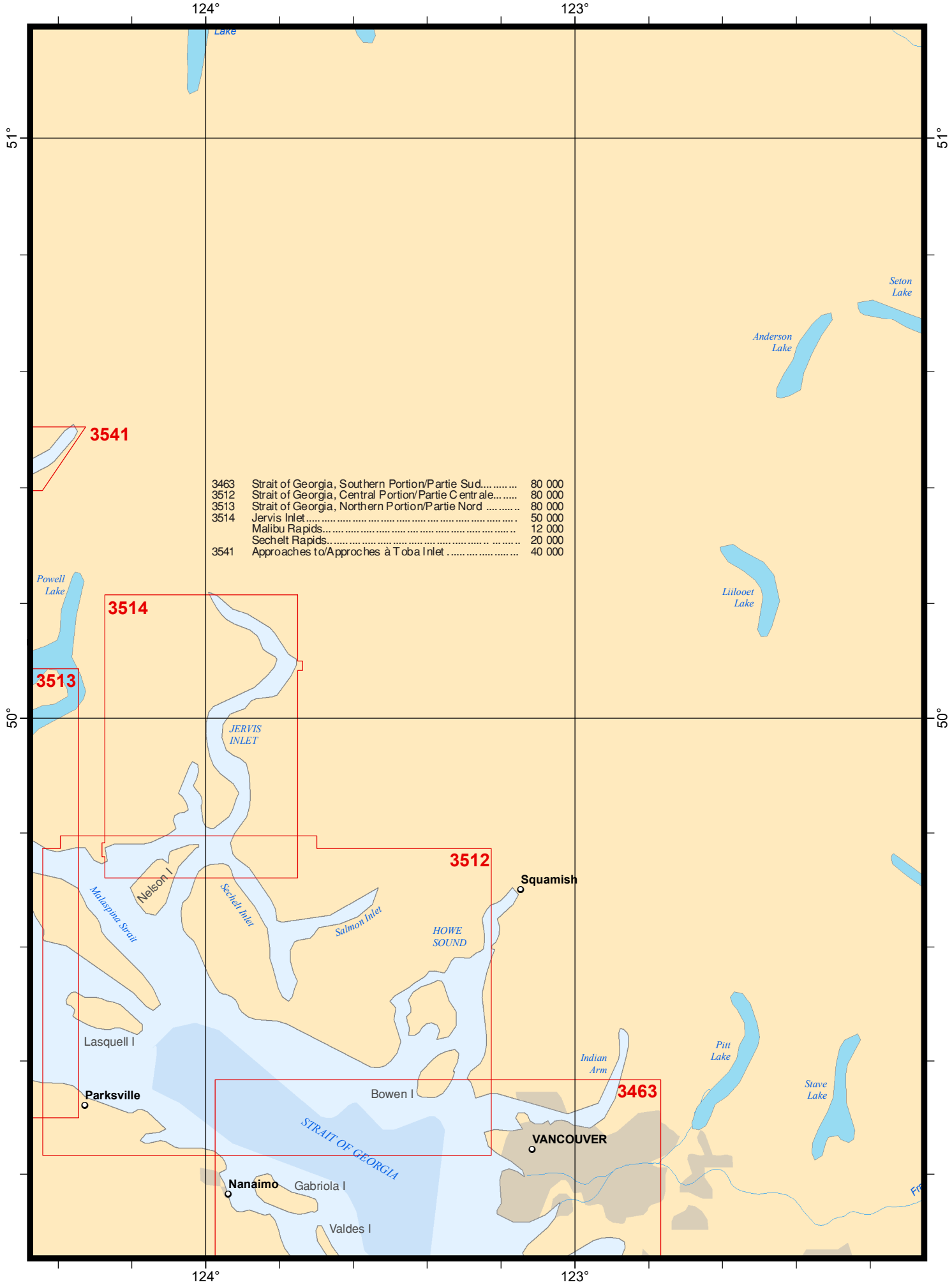
Nelson I

MELAS

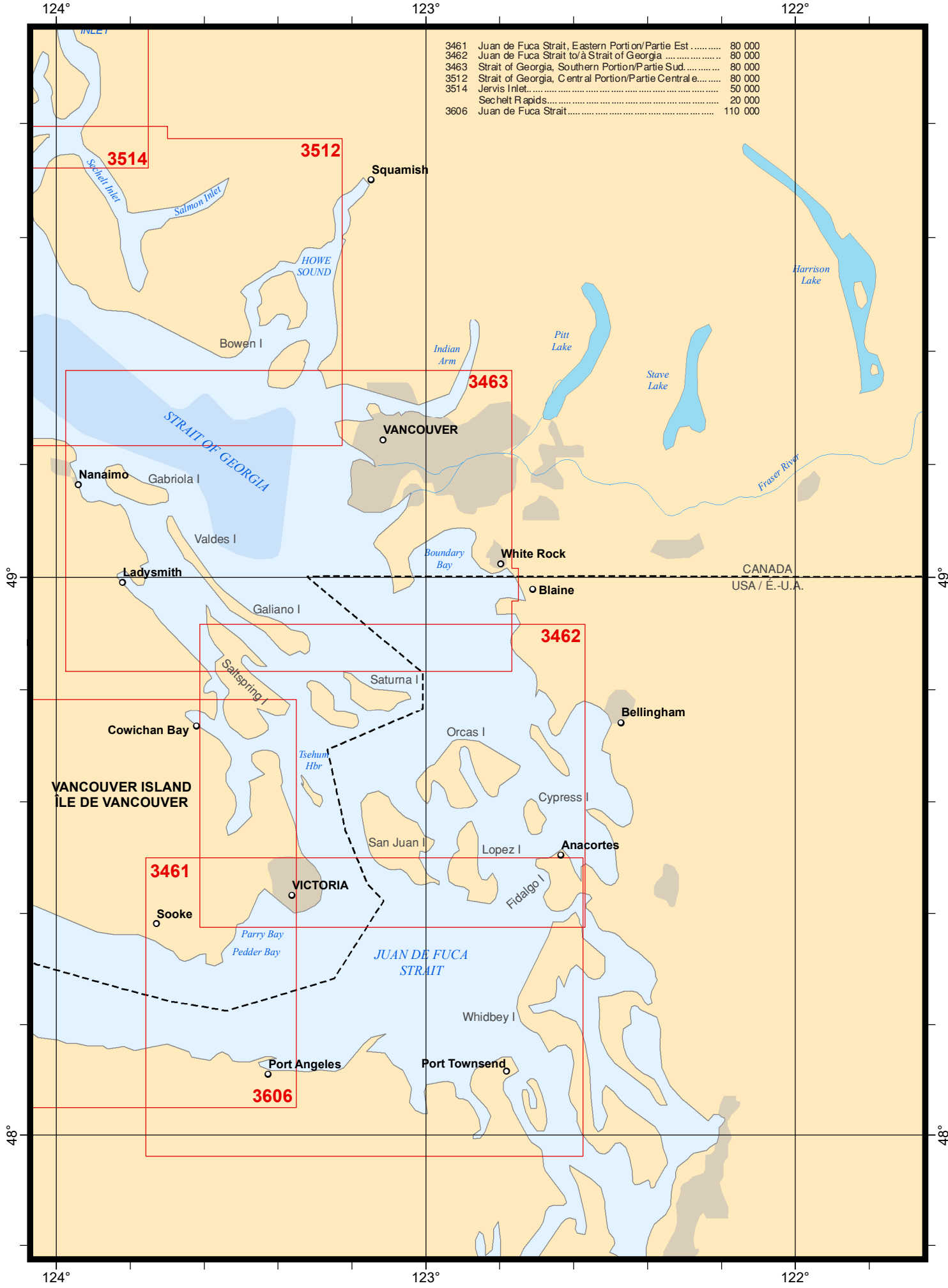


3512	Strait of Georgia, Central Portion/Partie Centrale.....	80 000
3513	Strait of Georgia, Northern Portion/Partie Nord.....	80 000
3514	Jervis Inlet.....	50 000
3538	Desolation Sound and Let Sutil Channel.....	40 000
3602	Approaches to/Approches à Juan de Fuca Strait.....	150 000
3603	Ucluellet Inlet to à Nootka Sound.....	150 000
3606	Juan de Fuca Strait.....	110 000
3646	Bamfield Inlet.....	12 000
	Fatty Basin.....	7 500
	Uchucklesit Inlet.....	18 000
	Ucluellet Inlet.....	15 000
3647	Nitinat Narrows.....	2 000
	Nitinat Narrows.....	12 000
3668	Port San Juan.....	18 000
	Alberni Inlet.....	40 000
	Entrance to/Entrée à Uselles Inlet.....	10 000
	Port Alberni.....	10 000
	Robbers Passage.....	10 000
3670	Broken Group.....	20 000
3671	Barkeley Sound.....	40 000
3673	Clayoquot Sound, Tofino Inlet to à Millar Channel.....	40 000
3674	Continuation A - Clayoquot Sound, Millar Channel to à Estevan Point.....	40 000
	Hayden Passage.....	20 000
	Hot Springs Cove.....	20 000
	Markosis.....	10 000
	Millar Channel to à Estevan Point.....	40 000
3675	Gold River.....	10 000
	Nootka Sound.....	40 000
3685	Tofino.....	20 000

PACIFIC OCEAN
OCÉAN PACIFIQUE

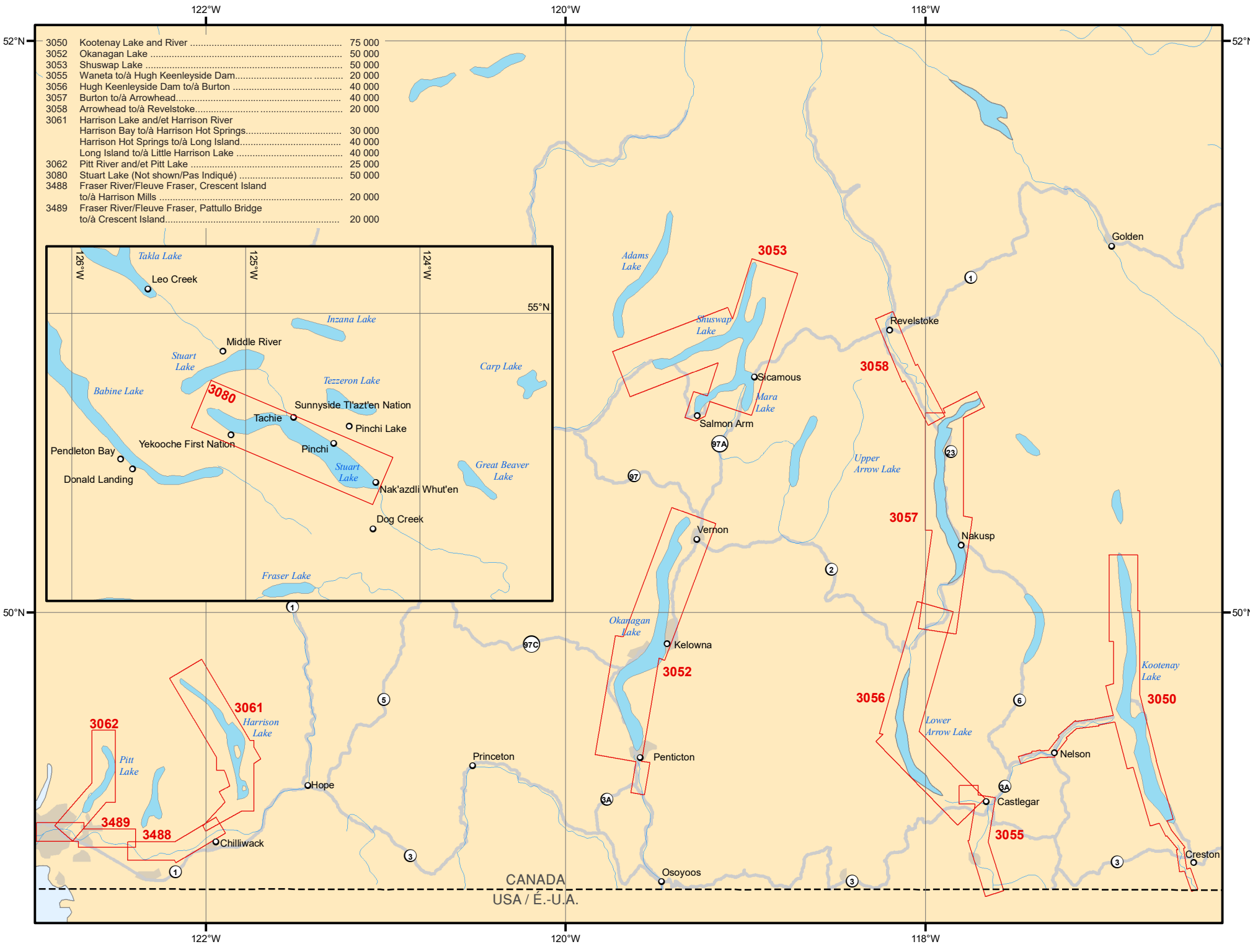


3461	Juan de Fuca Strait, Eastern Portion/Partie Est	80 000
3462	Juan de Fuca Strait to à Strait of Georgia	80 000
3463	Strait of Georgia, Southern Portion/Partie Sud.....	80 000
3512	Strait of Georgia, Central Portion/Partie Centrale.....	80 000
3514	Jervis Inlet.....	50 000
	Sechelt Rapids.....	20 000
3606	Juan de Fuca Strait.....	110 000

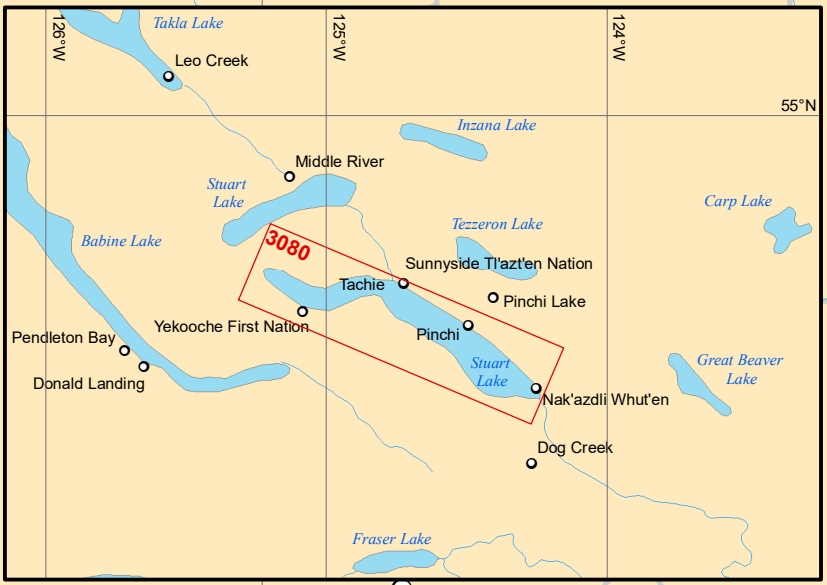


124° 123° 122°

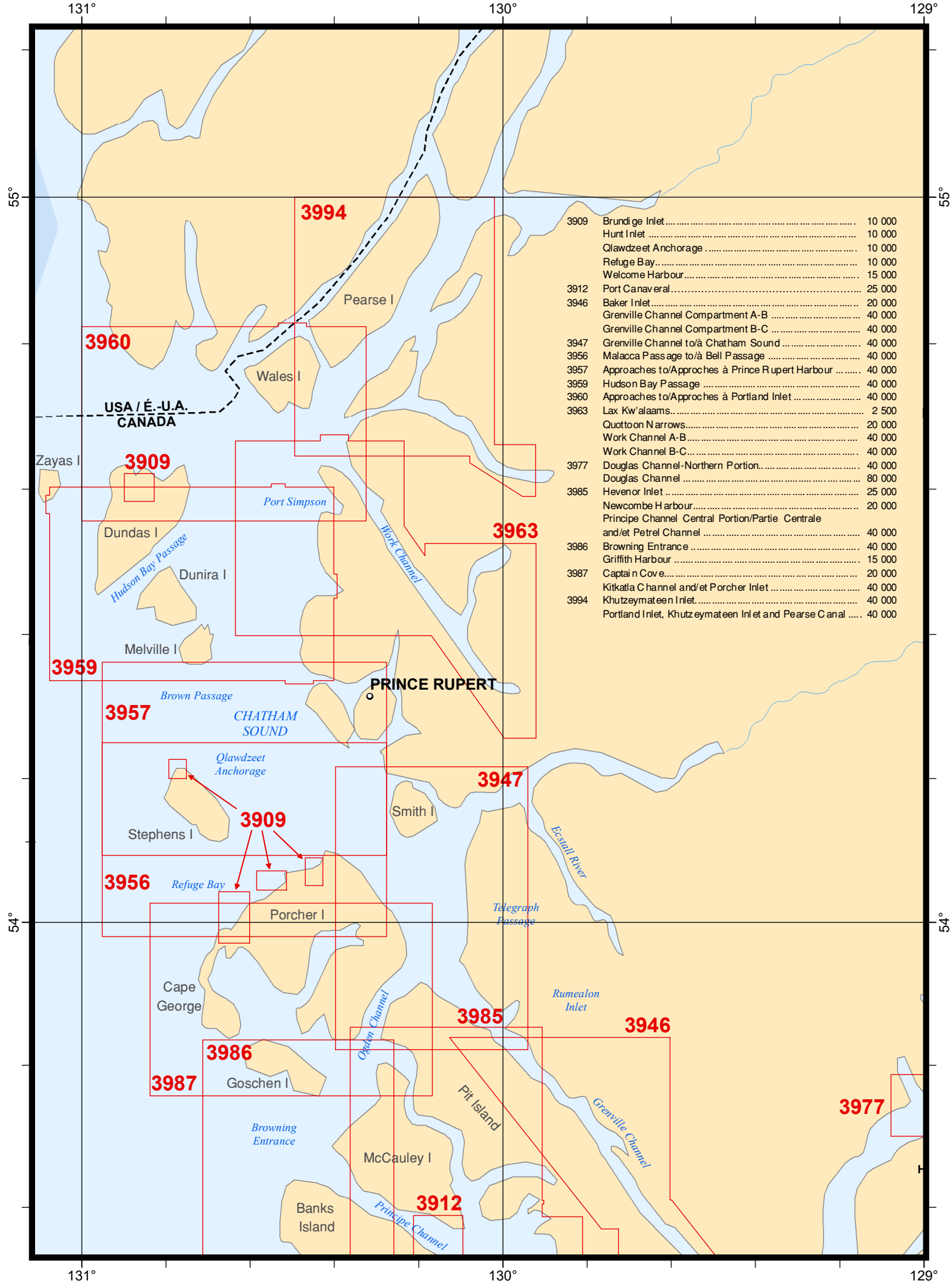
49° 48°



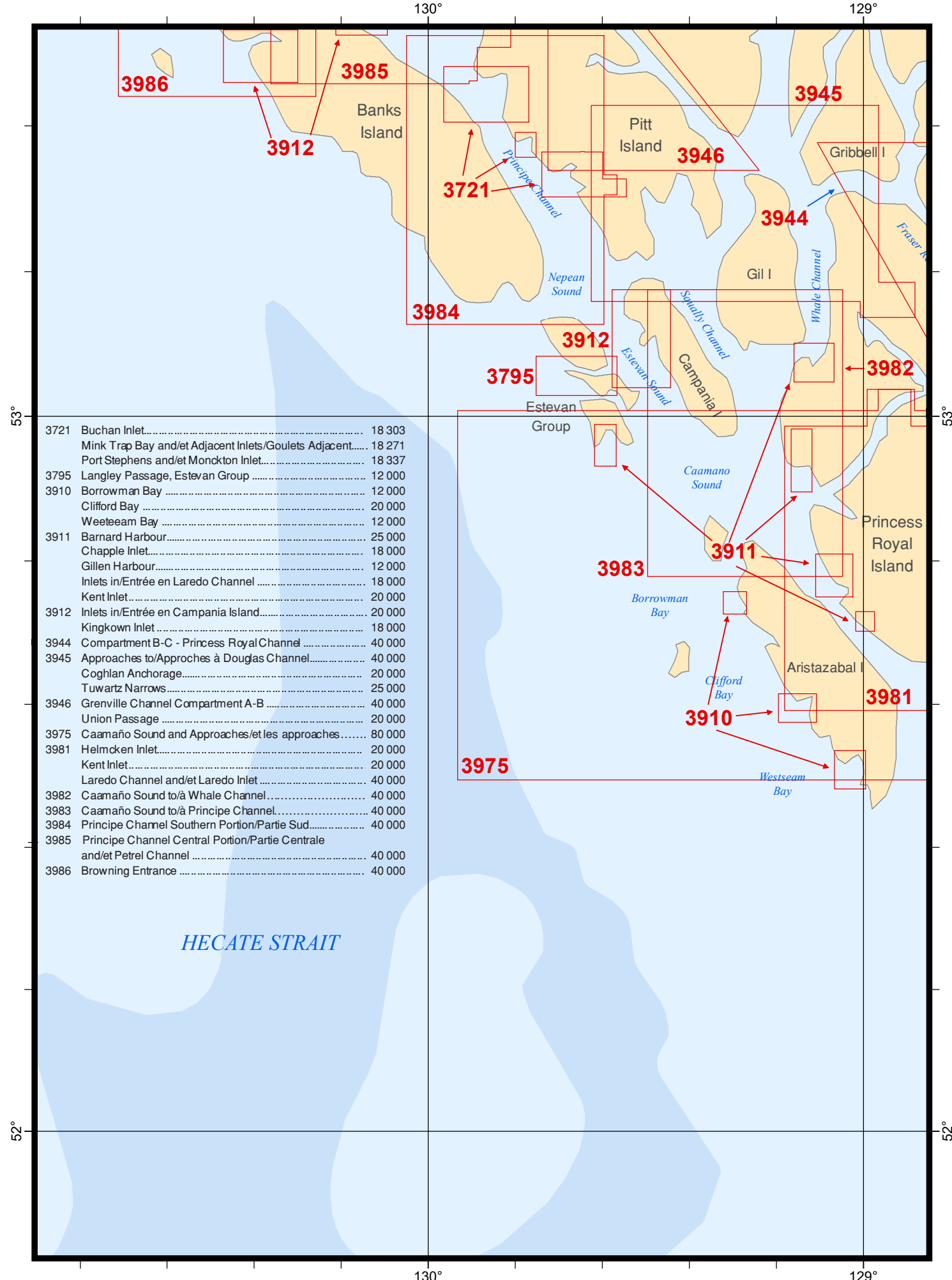
3050	Kootenay Lake and River	75 000
3052	Okanagan Lake	50 000
3053	Shuswap Lake	50 000
3055	Waneta to/à Hugh Keenleyside Dam.....	20 000
3056	Hugh Keenleyside Dam to/à Burton	40 000
3057	Burton to/à Arrowhead.....	40 000
3058	Arrowhead to/à Revelstoke.....	20 000
3061	Harrison Lake and/et Harrison River	
	Harrison Bay to/à Harrison Hot Springs.....	30 000
	Harrison Hot Springs to/à Long Island.....	40 000
	Long Island to/à Little Harrison Lake	40 000
3062	Pitt River and/et Pitt Lake	25 000
3080	Stuart Lake (Not shown/Pas Indiqué)	50 000
3488	Fraser River/Fleuve Fraser, Crescent Island	
	to/à Harrison Mills	20 000
3489	Fraser River/Fleuve Fraser, Pattullo Bridge	
	to/à Crescent Island.....	20 000



CANADA
USA / É.-U.A.



3909	Brundige Inlet	10 000
	Hunt Inlet	10 000
	Qlawdzeet Anchorage	10 000
	Refuge Bay	10 000
	Welcome Harbour	15 000
3912	Port Canaveral	25 000
3946	Baker Inlet	20 000
	Grenville Channel Compartment A-B	40 000
	Grenville Channel Compartment B-C	40 000
3947	Grenville Channel to/à Chatham Sound	40 000
3956	Malacca Passage to/à Bell Passage	40 000
3957	Approches to/Approches à Prince Rupert Harbour	40 000
3959	Hudson Bay Passage	40 000
3960	Approches to/Approches à Portland Inlet	40 000
3963	Lax Kw'alaams	2 500
	Quottoon Narrows	20 000
	Work Channel A-B	40 000
	Work Channel B-C	40 000
3977	Douglas Channel-Northern Portion	40 000
	Douglas Channel	80 000
3985	Hevenor Inlet	25 000
	Newcombe Harbour	20 000
	Principe Channel Central Portion/Partie Centrale and/et Petrel Channel	40 000
3986	Browning Entrance	40 000
	Griffith Harbour	15 000
3987	Captain Cove	20 000
	Kitkatla Channel and/et Porcher Inlet	40 000
3994	Khutzeymateen Inlet	40 000
	Portland Inlet, Khutzeymateen Inlet and Pearse Canal	40 000



3721	Buchan Inlet.....	18 303
	Mink Trap Bay and/et Adjacent Inlets/Goulets Adjacent.....	18 271
	Port Stephens and/et Monckton Inlet.....	18 337
3795	Langley Passage, Estevan Group	12 000
3910	Borrowman Bay	12 000
	Clifford Bay	20 000
	Weeteeam Bay	12 000
3911	Barnard Harbour.....	25 000
	Chapple Inlet.....	18 000
	Gillen Harbour.....	12 000
	Inlets in/Entrée en Laredo Channel	18 000
	Kent Inlet.....	20 000
3912	Inlets in/Entrée en Campania Island.....	20 000
	Kingkown Inlet	18 000
3944	Compartment B-C - Princess Royal Channel	40 000
3945	Approaches to/Approches à Douglas Channel.....	40 000
	Coghlan Anchorage.....	20 000
	Tuwartz Narrows.....	25 000
3946	Grenville Channel Compartment A-B	40 000
	Union Passage	20 000
3975	Caamaño Sound and Approaches/et les approches.....	80 000
3981	Helmcken Inlet.....	20 000
	Kent Inlet.....	20 000
	Laredo Channel and/et Laredo Inlet	40 000
3982	Caamaño Sound to/à Whale Channel.....	40 000
3983	Caamaño Sound to/à Principe Channel.....	40 000
3984	Principe Channel Southern Portion/Partie Sud.....	40 000
3985	Principe Channel Central Portion/Partie Centrale and/et Petrel Channel	40 000
3986	Browning Entrance	40 000

HECATE STRAIT

129° 128° 127°

3908	Kitimat Harbour.....	15 000
	Kitimat.....	8 000
3943	Finlayson Channel and/et Tolmie Channel.....	40 000
3944	Butedale.....	6 000
	Compartment A-B - Princess Royal Channel.....	40 000
	Compartment B-C - Princess Royal Channel.....	40 000
3945	Approaches to/Approches à Douglas Channel.....	40 000
3948	Gardner Canal.....	40 000
	Kemano Bay.....	12 000
3977	Douglas Channel.....	80 000
	Douglas Channel-Northern Portion.....	40 000
3981	Laredo Channel and/et Laredo Inlet.....	40 000
	Continuation A Surf Inlet.....	40 000
	Continuation B Laredo Inlet.....	40 000
3982	Caamaño Sound to/à Whale Channel.....	40 000

54°

54°

o Kitimat

3908

3977

Hawkesbury I

3948

3945

Gribbell I

Princess
Fraser Reach

GARDNER CANAL

Royal
Channel

Butedale

3944

3982

Princess
Royal
Island

3981

3943

Morice Lake

Ootsa Lake

Eutsuk Lake

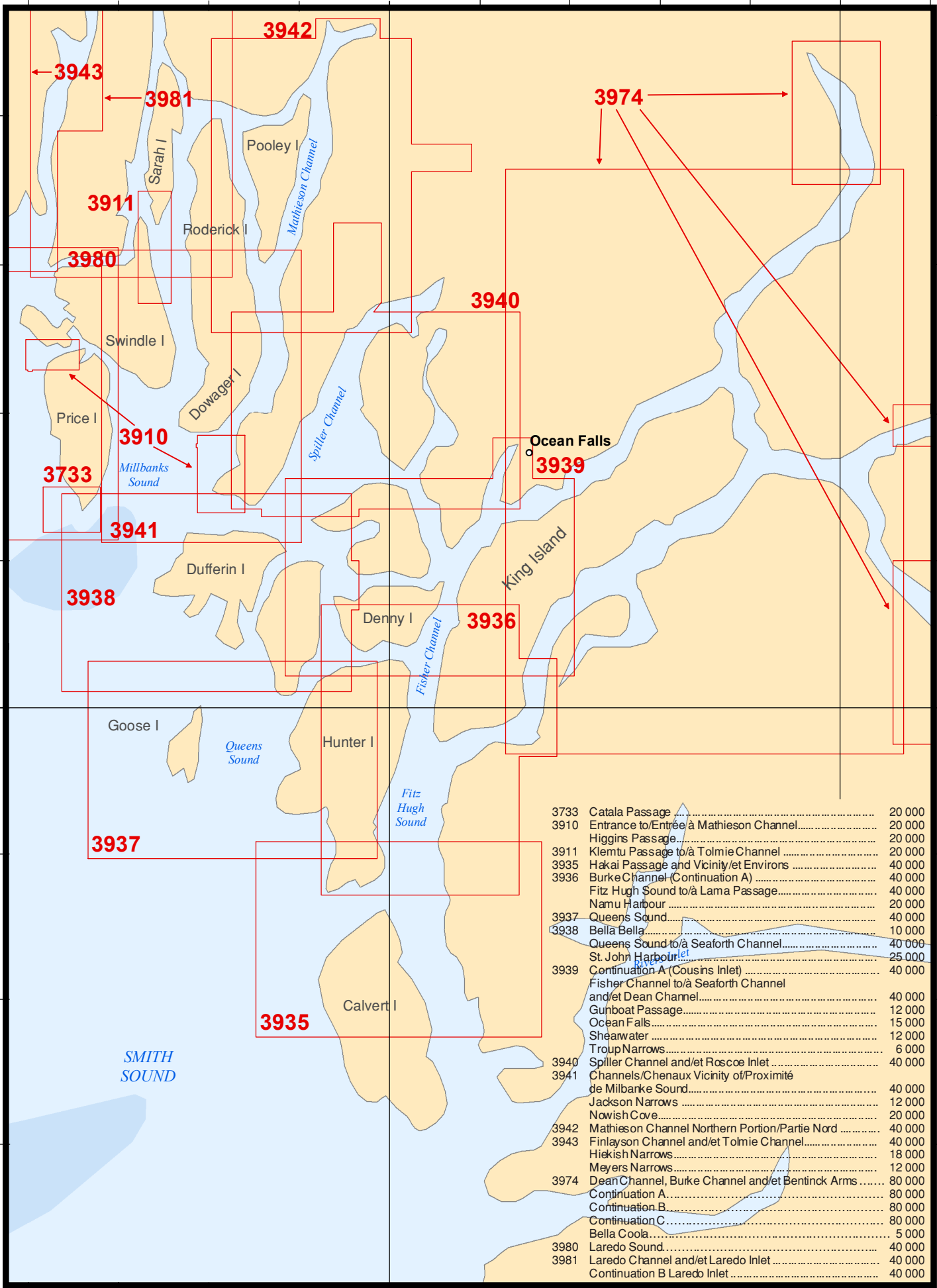
53°

53°

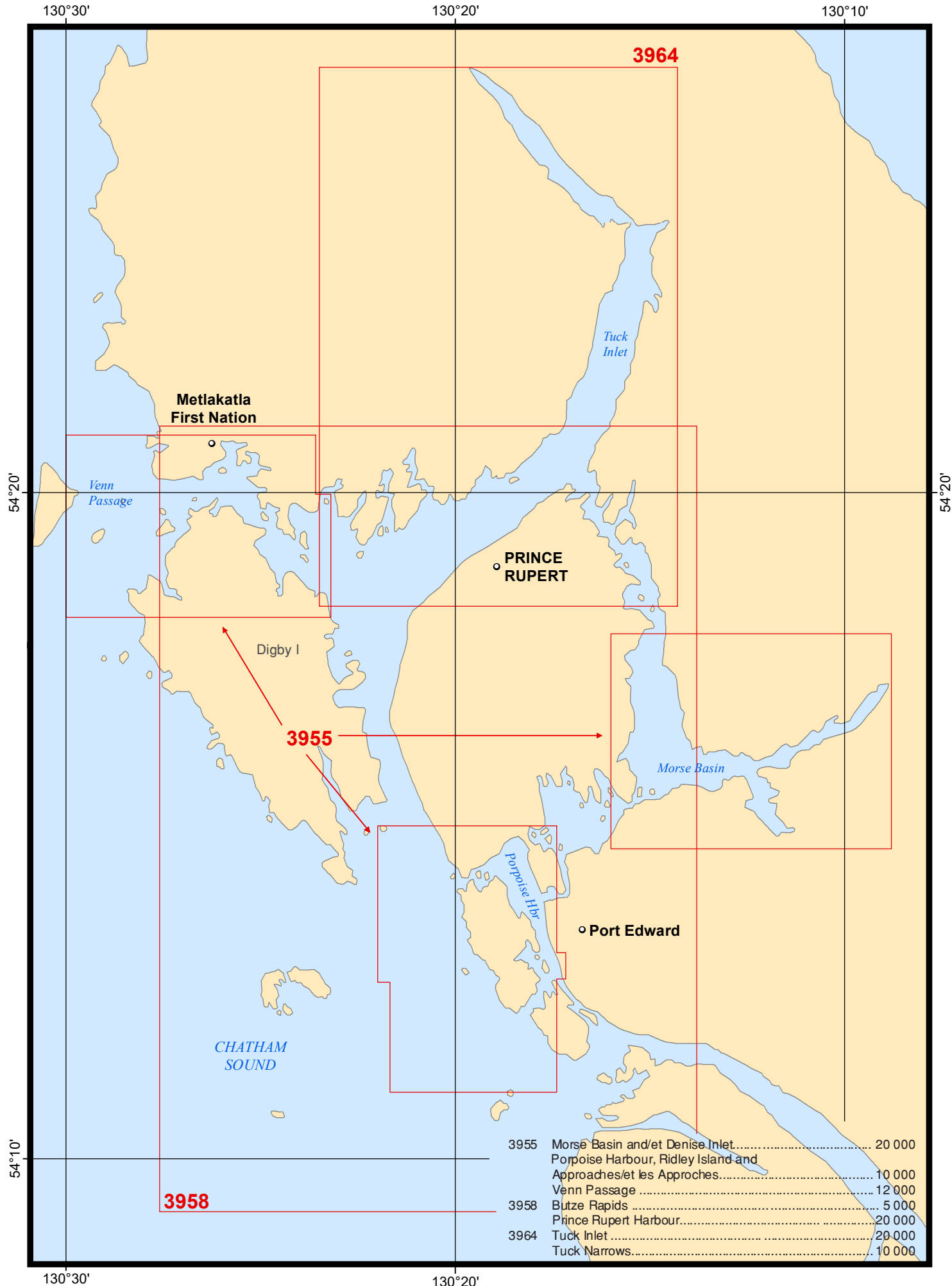
129°

128°

127°



3733	Catala Passage	20 000
3910	Entrance to/Entrée à Mathieson Channel.....	20 000
	Higgins Passage.....	20 000
3911	Klemtu Passage to/à Tolmie Channel	20 000
3935	Hakai Passage and Vicinity/et Environs	40 000
3936	Burke Channel (Continuation A)	40 000
	Fitz Hugh Sound to/à Lama Passage.....	40 000
	Namu Harbour	20 000
3937	Queens Sound.....	40 000
3938	Bella Bella.....	10 000
	Queens Sound to/à Seaforth Channel.....	40 000
	St John Harbour.....	25 000
3939	Continuation A (Cousins Inlet)	40 000
	Fisher Channel to/à Seaforth Channel and/et Dean Channel.....	40 000
	Gunboat Passage.....	12 000
	Ocean Falls.....	15 000
	Shearwater	12 000
	Troup Narrows.....	6 000
3940	Spiller Channel and/et Roscoe Inlet	40 000
3941	Channels/Chenaux Vicinity of/Proximité de Milbarke Sound.....	40 000
	Jackson Narrows	12 000
	Nowish Cove.....	20 000
3942	Mathieson Channel Northern Portion/Partie Nord	40 000
3943	Finlayson Channel and/et Tolmie Channel.....	40 000
	Hiekish Narrows.....	18 000
	Meyers Narrows.....	12 000
3974	Dean Channel, Burke Channel and/et Bentinck Arms	80 000
	Continuation A.....	80 000
	Continuation B.....	80 000
	Continuation C.....	80 000
	Bella Coola.....	5 000
3980	Laredo Sound.....	40 000
3981	Laredo Channel and/et Laredo Inlet	40 000
	Continuation B Laredo Inlet	40 000



3958

3955

3964

3955	Morse Basin and/et Denise Inlet.....	20 000
	Porpoise Harbour, Ridley Island and	
	Approaches/et les Approches.....	10 000
	Venn Passage	12 000
3958	Butze Rapids	5 000
	Prince Rupert Harbour.....	20 000
3964	Tuck Inlet	20 000
	Tuck Narrows.....	10 000

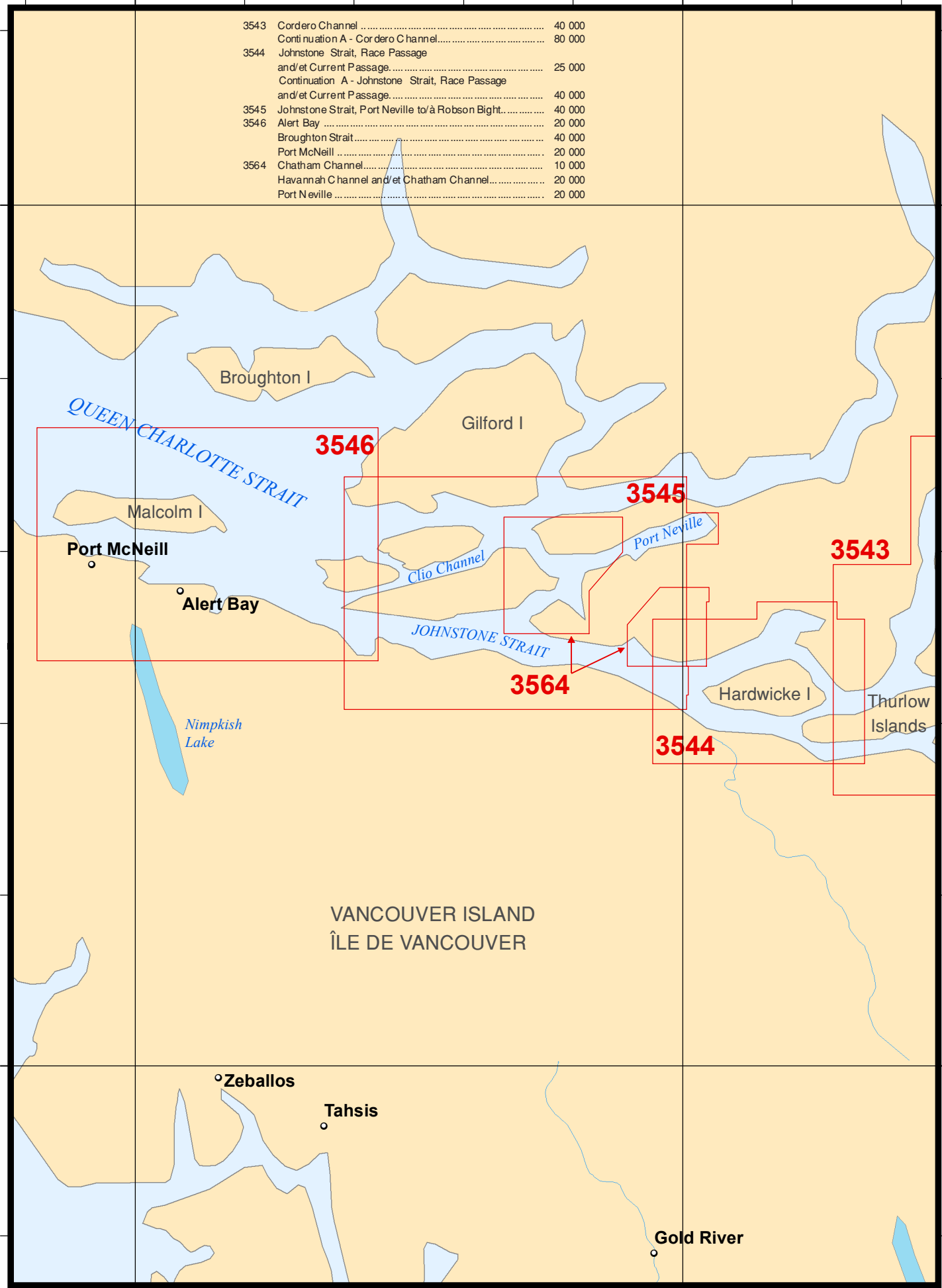
127°

126°

3543	Cordero Channel	40 000
	Continuation A - Cordero Channel.....	80 000
3544	Johnstone Strait, Race Passage and/et Current Passage.....	25 000
	Continuation A - Johnstone Strait, Race Passage and/et Current Passage.....	40 000
3545	Johnstone Strait, Port Neville to/à Robson Bight.....	40 000
3546	Alert Bay	20 000
	Broughton Strait.....	40 000
	Port McNeill	20 000
3564	Chatham Channel.....	10 000
	Havannah Channel and/et Chatham Channel.....	20 000
	Port Neville	20 000

51°

51°

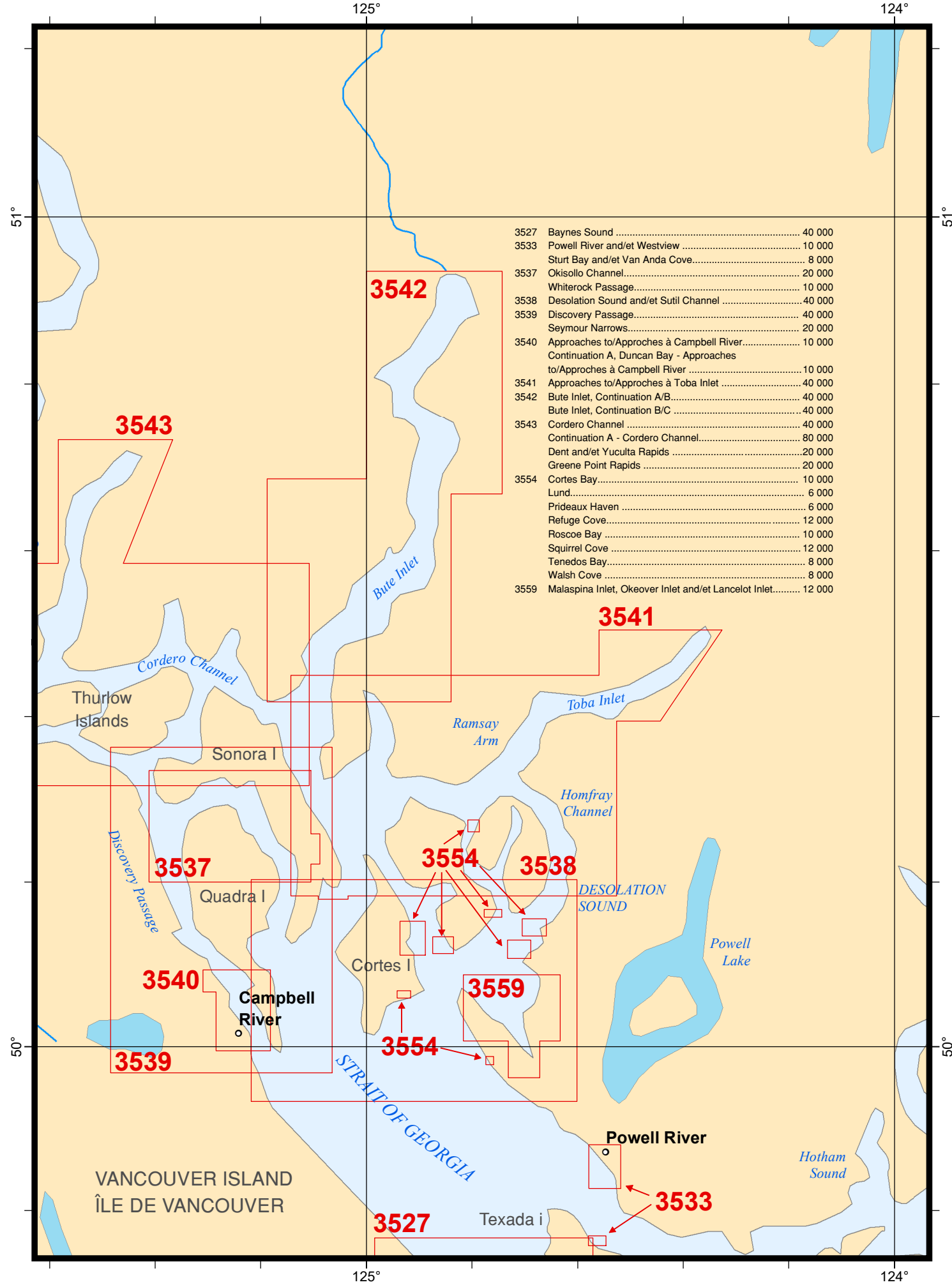


50°

50°

127°

126°



3527	Baynes Sound	40 000
3533	Powell River and/et Westview	10 000
	Sturt Bay and/et Van Anda Cove.....	8 000
3537	Okisollo Channel.....	20 000
	Whiterock Passage.....	10 000
3538	Desolation Sound and/et Sutil Channel	40 000
3539	Discovery Passage.....	40 000
	Seymour Narrows.....	20 000
3540	Approaches to/Approches à Campbell River.....	10 000
	Continuation A, Duncan Bay - Approches	
	to/Approches à Campbell River	10 000
3541	Approaches to/Approches à Toba Inlet	40 000
3542	Bute Inlet, Continuation A/B	40 000
	Bute Inlet, Continuation B/C	40 000
3543	Cordero Channel	40 000
	Continuation A - Cordero Channel.....	80 000
	Dent and/et Yuculta Rapids	20 000
	Greene Point Rapids	20 000
3554	Cortes Bay.....	10 000
	Lund.....	6 000
	Prideaux Haven	6 000
	Refuge Cove.....	12 000
	Roscoe Bay	10 000
	Squirrel Cove	12 000
	Tenedos Bay.....	8 000
	Walsh Cove	8 000
3559	Malaspina Inlet, Okeover Inlet and/et Lancelot Inlet.....	12 000

VANCOUVER ISLAND
ÎLE DE VANCOUVER

STRAIT OF GEORGIA

Powell River

Texada I

Hotham Sound

Powell Lake

DESOLATION SOUND

Homfray Channel

Ramsay Arm

Toba Inlet

Bute Inlet

Cordero Channel

Thurlow Islands

Sonora I

Quadra I

Campbell River

Cortes I

3543

3542

3541

3537

3554

3538

3540

3559

3539

3554

3527

3533

51°

51°

50°

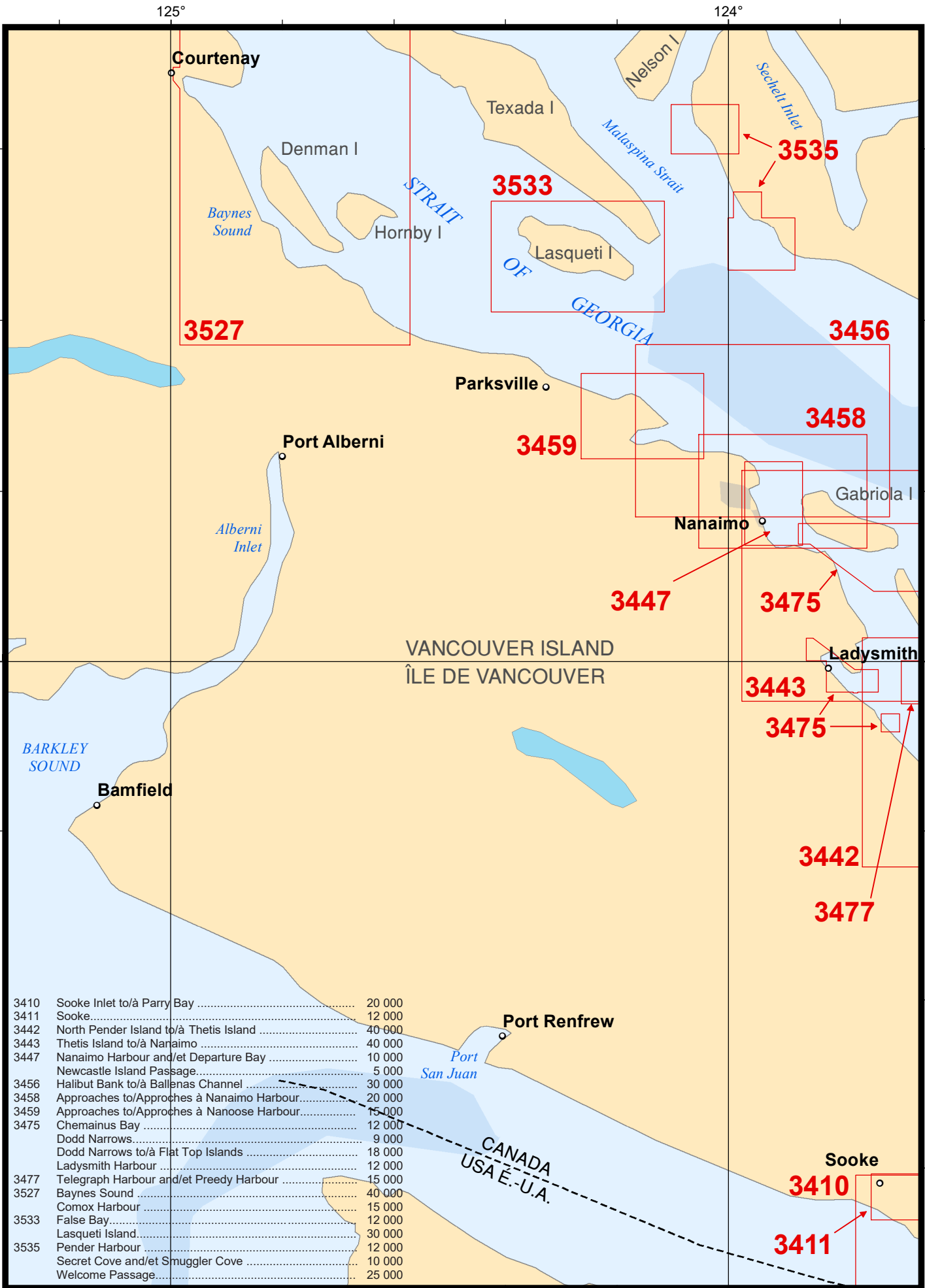
50°

125°

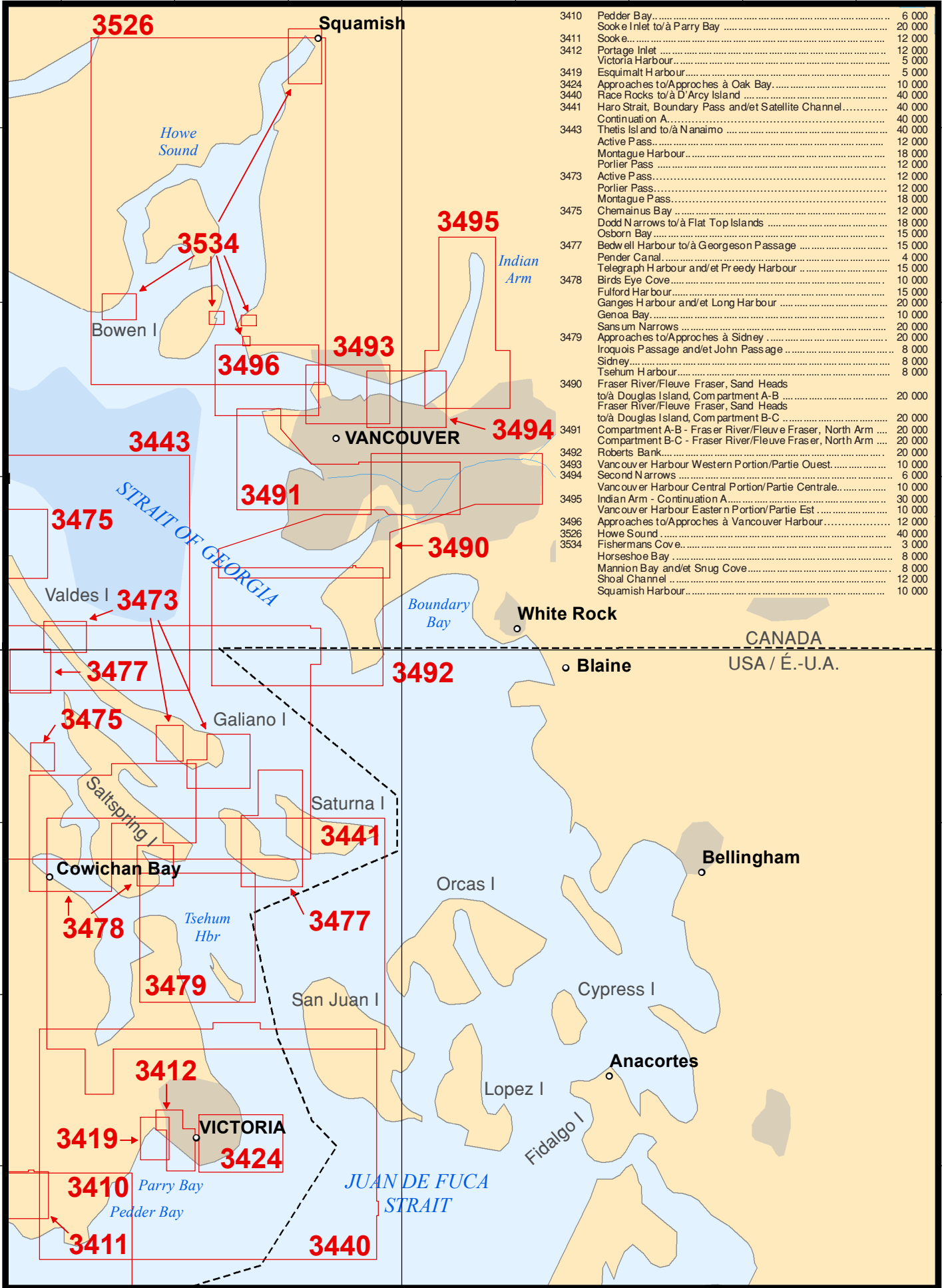
124°

125°

124°



3410	Sooke Inlet to/à Parry Bay	20 000
3411	Sooke.....	12 000
3442	North Pender Island to/à Thetis Island	40 000
3443	Thetis Island to/à Nanaimo	40 000
3447	Nanaimo Harbour and/et Departure Bay	10 000
	Newcastle Island Passage.....	5 000
3456	Halibut Bank to/à Ballenas Channel	30 000
3458	Approaches to/Approches à Nanaimo Harbour.....	20 000
3459	Approaches to/Approches à Nanoose Harbour.....	15 000
3475	Chemainus Bay	12 000
	Dodd Narrows.....	9 000
	Dodd Narrows to/à Flat Top Islands	18 000
	Ladysmith Harbour	12 000
3477	Telegraph Harbour and/et Preedy Harbour	15 000
3527	Baynes Sound	40 000
	Comox Harbour	15 000
3533	False Bay.....	12 000
	Lasqueti Island.....	30 000
3535	Pender Harbour	12 000
	Secret Cove and/et Smuggler Cove	10 000
	Welcome Passage.....	25 000



3410	Pedder Bay.....	6 000
	Sooke Inlet to/à Parry Bay	20 000
3411	Sooke.....	12 000
3412	Portage Inlet.....	12 000
	Victoria Harbour.....	5 000
3419	Esquimalt Harbour.....	5 000
3424	Approaches to/Approches à Oak Bay.....	10 000
3440	Race Rocks to/à D'Arcy Island	40 000
3441	Haro Strait, Boundary Pass and/et Satellite Channel	40 000
	Continuati on A.....	40 000
3443	Thetis Isl and to/à Nanaimo	40 000
	Active Pass.....	12 000
	Montague Harbour.....	18 000
	Porlier Pass.....	12 000
3473	Active Pass.....	12 000
	Porlier Pass.....	12 000
	Montague Pass.....	18 000
3475	Chemainus Bay	12 000
	Dodd N arrows to/à Flat Top Islands	18 000
	Osborn Bay.....	15 000
3477	Bedwell Harbour to/à Georgeson Passage	15 000
	Pender Canal.....	4 000
3478	Telegraph Harbour and/et Preedy Harbour	15 000
	Birds Eye Cove.....	10 000
	Fulford Harbour.....	15 000
	Ganges Harbour and/et Long Harbour	20 000
	Genoa Bay.....	10 000
	Sansum Narrows.....	20 000
3479	Approaches to/Approches à Sidney	20 000
	Iroquois Passage and/et John Passage	8 000
	Sidney.....	8 000
	Tsehum Harbour.....	8 000
3490	Fraser River/Flleuve Fraser, Sand Heads to/à Douglas Island, Com partment A-B	20 000
	Fraser River/Flleuve Fraser, Sand Heads to/à Douglas Island, Com partment B-C	20 000
3491	Com partment A-B - Fraser River/Flleuve Fraser, North Arm	20 000
	Com partment B-C - Fraser River/Flleuve Fraser, North Arm	20 000
3492	Roberts Bank.....	20 000
3493	Vancouver Harbour Western Portion/Partie Ouest.....	10 000
3494	Second Narrows.....	6 000
	Vancouver Harbour Central Portion/Partie Centrale.....	10 000
3495	Indian Arm - Continuati on A.....	30 000
	Vancouver Harbour Eastern Portion/Partie Est.....	10 000
3496	Approaches to/Approches à Vancouver Harbour.....	12 000
3526	Howe Sound.....	40 000
3528	Fishermans Cove.....	3 000
3534	Horseshoe Bay.....	8 000
	Mannion Bay and/et Snug Cove.....	8 000
	Shoal Channel.....	12 000
	Squamish Harbour.....	10 000

CANADA
USA / É.-U.A.