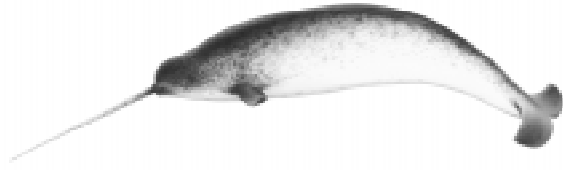




ኩርርፍ ማህግሮስ ደረጃዎችን ለማረጋገጥ

ፈለግን ደረጃዎችን ለማረጋገጥ የሚያስፈልገው ደረጃዎችን ለማረጋገጥ E5-43(1998)



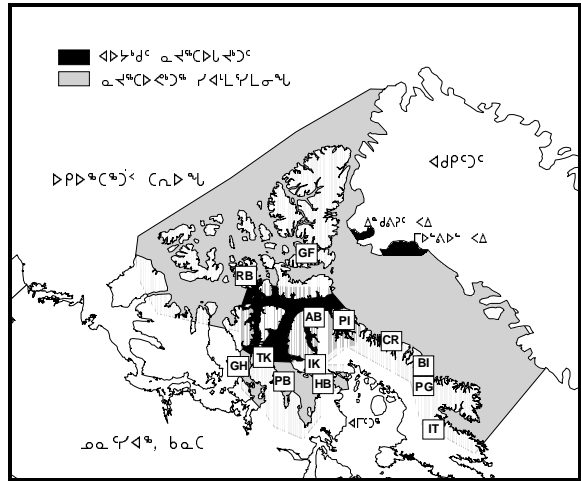
የሞሪሽያ ለውጥ ለውጥ

ደረጃዎችን ለማረጋገጥ

ፈለግን ደረጃዎችን ለማረጋገጥ የሚያስፈልገው ደረጃዎችን ለማረጋገጥ የሚያስፈልገው ደረጃዎችን ለማረጋገጥ...

ፈለግን ደረጃዎችን ለማረጋገጥ የሚያስፈልገው ደረጃዎችን ለማረጋገጥ የሚያስፈልገው ደረጃዎችን ለማረጋገጥ...

የሞሪሽያ ለውጥ ለውጥ የሚያስፈልገው ደረጃዎችን ለማረጋገጥ የሚያስፈልገው ደረጃዎችን ለማረጋገጥ...



ደረጃዎችን ለማረጋገጥ የሚያስፈልገው ደረጃዎችን ለማረጋገጥ የሚያስፈልገው ደረጃዎችን ለማረጋገጥ...

የሞሪሽያ ለውጥ ለውጥ

Table with 5 columns: Area, (dC), 93-94, 94-95, 95-96, 96-97, 97-98. Rows include various fishing zones like AB, BI, CR, etc.

ደረጃዎችን ለማረጋገጥ የሚያስፈልገው ደረጃዎችን ለማረጋገጥ የሚያስፈልገው ደረጃዎችን ለማረጋገጥ...



ᑲᑯᑯᑦᑕᑦᑕᑦ ᑕᑕᑕᑕᑕᑕ ᑕᑕᑕᑕᑕᑕ
ᓂᑕᑕᑕᑕᑕᑕ

Canadian Technical Report, Fisheries and Aquatic Sciences 1211.

ᑲᑯᑯᑦᑕᑦᑕᑦ: ᑕᑕᑕᑕ ᑲᑯᑯᑦᑕᑦᑕᑦᑕᑕᑕ
ᑯᓂᑕᑕᑕᑕᑕᑕᑕ ᑕᑕᑕᑕᑕᑕᑕᑕᑕᑕᑕᑕ
ᑕᑕᑕᑕᑕᑕᑕᑕᑕᑕᑕᑕᑕᑕ ᑲᑯᑯᑦᑕᑦᑕᑕᑕᑕᑕᑕᑕᑕᑕ
ᑯᑯᑯᑦᑕᑦᑕᑕᑕᑕ ᑕᑕᑕᑕᑕᑕ.

Fowler, C.W. 1981. Comparative population dynamics in large mammals. *In:* Fowler, C.W. and T.D. Smith (eds). Dynamics of Large Populations. John Wiley & Sons. New York. xviii + 477 p.

Born, E. W. 1986. Observations of narwhals (*Monodon monoceros*) in the Thule area (NW Greenland), August 1984. Rep. int. Whal. Commn 36: 387-392.

Hay, K.A. 1984. The life history of the Narwhal (*Monodon monoceros*, L.) in the eastern Canadian Arctic. PhD dissertation. McGill University. xvi + 255 p.

Born, E. W., M. P. Heide-Jørgensen, F. Larsen and A. R. Martin. 1994. Abundance and stock composition of narwhals (*Monodon monoceros*) in Inglefield Bredning (NW Greenland). Meddr Grønland, Biosci. 39: 51-68.

Heide-Jørgensen, M. P. 1994. Distribution, exploitation and population status of white whales (*Delphinapterus leucas*) and narwhals (*Monodon monoceros*) in West Greenland. Meddr Grønland, Biosci. 39: 135-149.

Cosens, S. 1995. The impact of ship noise and disturbance on the behaviour of narwhals and belugas. SWG/WP95-10.

Heide-Jørgensen, M. P. and R. Dietz. 1995. Some characteristics of narwhal (*Monodon monoceros*) diving behaviour in Baffin Bay. Can. J. Zool. 73:2120-2132.

Cosens, S. E. and L. P. Dueck. 1988. Responses of migrating narwhal and beluga to icebreaker traffic at the Admiralty Inlet ice-edge, N.W.T. in 1986. *In:* W. M. Sackinger and M. O. Jeffries (eds.), Port and Ocean Engineering Under Arctic Conditions. Vol. 2. Univ. Alaska, Fairbanks.

Kingsley, M. 1989. Population dynamics of the narwhal *Monodon monoceros*: an initial assessment (Odontoceti: Monodontidae). J. Zool., Lond. 219: 201-208.

Dietz, R and M. P. Heide-Jørgensen. 1995. Movements and swimming speed of narwhals (*Monodon monoceros*) instrumented with satellite transmitters in Melville Bay, Northwest Greenland. Can. J. Zool. 73: 2106-2119.

Koski, W. R. and R. A. Davis. 1994. Distribution and numbers of narwhals (*Monodon monoceros*) in Baffin Bay and Davis Strait. Meddr Grønland, Biosci. 39: 15-40.

Fallis, B.W., W.E. Klenner and J.B. Kemper. 1983 Narwhal surveys and associated marine mammal observations in Admiralty Inlet, Navy Board Inlet and Eclipse Sound, Baffin Island, N.W.T., during 1974-76.

Martin, A.R., M.C.S. Kingsley and M.A. Ramsay. 1994. Diving behaviour of narwhals (*Monodon monoceros*) on their summering grounds. Can J. Zool. 72: 118-125.

Muir, D. C. G., C. A. Ford, N. P. Grift, R. E. A. Stewart and T. F. Bidleman. 1992.

Organochlorine contaminants in narwhal (*Monodon monoceros*) from the Canadian Arctic. *Environ. Pollut.* 75: 305-315.

Neve, P. B. 1995. Narwhal (*Monodon monoceros* L.) in West Greenland. Specialeafhandling ved Københavns Universitat.

Palsbøll, P. J., M. P. Heide-Jørgensen, and R. Dietz. 1995. Distribution of mtDNA haplotypes in North Atlantic narwhals: influence of an extreme habitat on genetic diversity. SWG/WP95-01.

Reeves, R. R., Dietz, R. and E. W. Born. 1994. Overview of the special issue "Studies of white whales (*Delphinapterus leucas*) and narwhals (*Monodon monoceros*) in Greenland and adjacent waters". *Meddr Grønland, Biosci.* 39: 3-11.

Remnant, R. A. and M. L. Thomas. 1992. Inuit traditional knowledge of the distribution and biology of high Arctic narwhal and beluga. North-South Consultants, Inc., Winnipeg; for the Canada/Greenland Joint Commission on the Conservation and Management of Narwhal and Beluga. vii + 96 pp.

Richard, P., P. Weaver, L. Dueck and D. Barber. 1994. Distribution and relative abundance of Canadian High Arctic narwhals (*Monodon monoceros*) in August 1984. *Meddr Grønland, Biosci.* 39: 41-50.

Roberge, M. M. and J. B. Dunn. 1990. Assessment of the subsistence harvest and biology of narwhal (*Monodon monoceros* L.) from Admiralty Inlet, Baffin Island, N.W.T., 1983 and 1986-89. *Can. Tech. Rep. Fish. Aquat. Sci.* No. 1747, 32 pp.

Smith, T.G., M.O. Hammil, D.J. Burrage, and G.A. Sleno. 1985. Distribution and abundance of belugas, *Delphinapterus leucus*, and narwhals, *Monodon monoceros*, in the Canadian high Arctic. *Can. J. Fish. Aquat. Sci.* 42: 676-684.

Stewart, D.B., A. Akeeagok, R. Amarualik, S. Panipakutsuk and A. Taqtu. 1995. Local knowledge of beluga and narwhal from four communities in Arctic Canada. *Can. Tech. Rep. Fish. Aquat. Sci.* 2065: viii+ 48 p. + appen.

Strong, J. T. 1988. Status of the narwhal (*Monodon monoceros*) in Canada. *Can. Field-Nat.* 102: 391-398.

SWG. 1995. 1995 report of the Scientific Working Group. Canada/Greenland Joint Commission on the Conservation and Management of Narwhal and Beluga. June 12-16, 1995, Winnipeg, Canada. 43 p. + append.

SWG. 1997. 1997 report of the Scientific Working Group. Canada/Greenland Joint Commission on the Conservation and Management of Narwhal and Beluga. June 16-20, 1997, Snekkersten, Denmark. 13 p. + append.

Taylor, B.L. and D.P. DeMaster. 1993. Implications of non-linear density dependence. *Marine Mammal Science.* 9: 360-371.

Thomsen, M. L. 1993. Local knowledge of the distribution, biology and hunting of beluga and narwhal. A survey among Inuit hunters in West and North Greenland. SWG/WP93-08

Wade, P.R. 1998. Calculating limits to the allowable human-caused mortality of

cetaceans and pinnipeds. *Marine Mammal Science* 14: 1-37.

Wagemann, R., N. B. Snow, A. Lutz and D. P. Scott. 1983. Heavy metals in tissues and organs of the narwhal (*Monodon monoceros*). *Can. J. Fish. Aquat. Sci.* 40 (Suppl. 2): 206-216.

Weaver, P.A. and R.S. Walker. 1988. The narwhal (*Monodon monoceros* L.) harvest in Pond Inlet, Northwest Territories: hunt documentation and biological sampling, 1982-1983.

ᑕᑦᑕᑦᑕᑦ ᑉᑲᑉᑕᑦᑕᑦᑕᑦᑕᑦ ᑕᑦᑕᑦᑕᑦᑕᑦᑕᑦᑕᑦ ᑕᑦᑕᑦᑕᑦ:
 ᖃᑕᑦᑕᑦᑕᑦᑕᑦᑕᑦ ᖃᑕᑦᑕᑦᑕᑦᑕᑦᑕᑦᑕᑦ ᑕᑦᑕᑦᑕᑦᑕᑦᑕᑦ
 ᑕᑦᑕᑦᑕᑦᑕᑦᑕᑦᑕᑦᑕᑦᑕᑦᑕᑦᑕᑦᑕᑦᑕᑦᑕᑦᑕᑦᑕᑦ
 ᑕᑦᑕᑦᑕᑦᑕᑦᑕᑦᑕᑦᑕᑦᑕᑦᑕᑦᑕᑦᑕᑦᑕᑦᑕᑦᑕᑦᑕᑦᑕᑦᑕᑦᑕᑦᑕᑦ
 ᑕᑦᑕᑦᑕᑦᑕᑦᑕᑦᑕᑦᑕᑦᑕᑦᑕᑦᑕᑦᑕᑦᑕᑦᑕᑦᑕᑦᑕᑦᑕᑦᑕᑦᑕᑦᑕᑦ
 ᖃᑕᑦᑕᑦᑕᑦᑕᑦᑕᑦᑕᑦᑕᑦᑕᑦᑕᑦᑕᑦᑕᑦᑕᑦᑕᑦᑕᑦᑕᑦᑕᑦᑕᑦᑕᑦ
 ᖃᑕᑦᑕᑦᑕᑦᑕᑦᑕᑦᑕᑦᑕᑦᑕᑦᑕᑦᑕᑦᑕᑦᑕᑦᑕᑦᑕᑦᑕᑦᑕᑦᑕᑦᑕᑦ
 ᑕᑦᑕᑦᑕᑦ ᑕᑦᑕᑦᑕᑦ (i.e. www.dfo-mpo.gc.ca/csas)

ISSN 1481-9260
 ISSN 1480-4913 (ᖃᑦᑕᑦᑕᑦᑕᑦ)
 ISSN 1480-4921 (ᑕᑦᑕᑦᑕᑦᑕᑦ)

